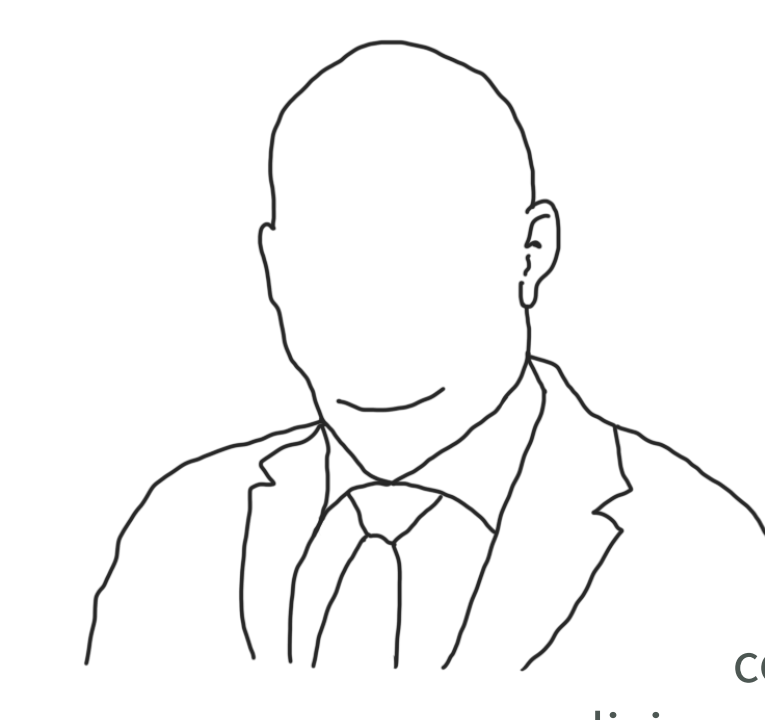
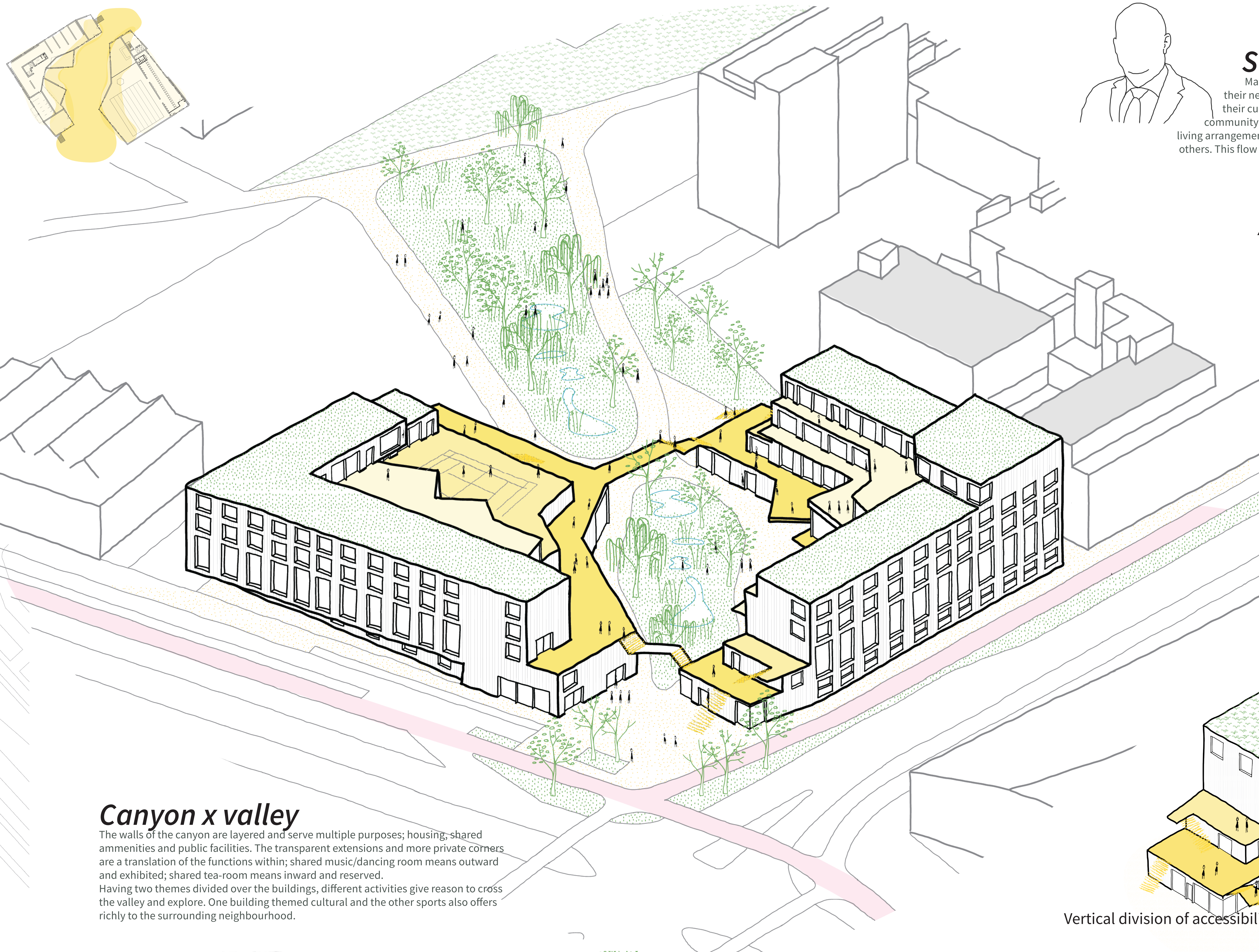
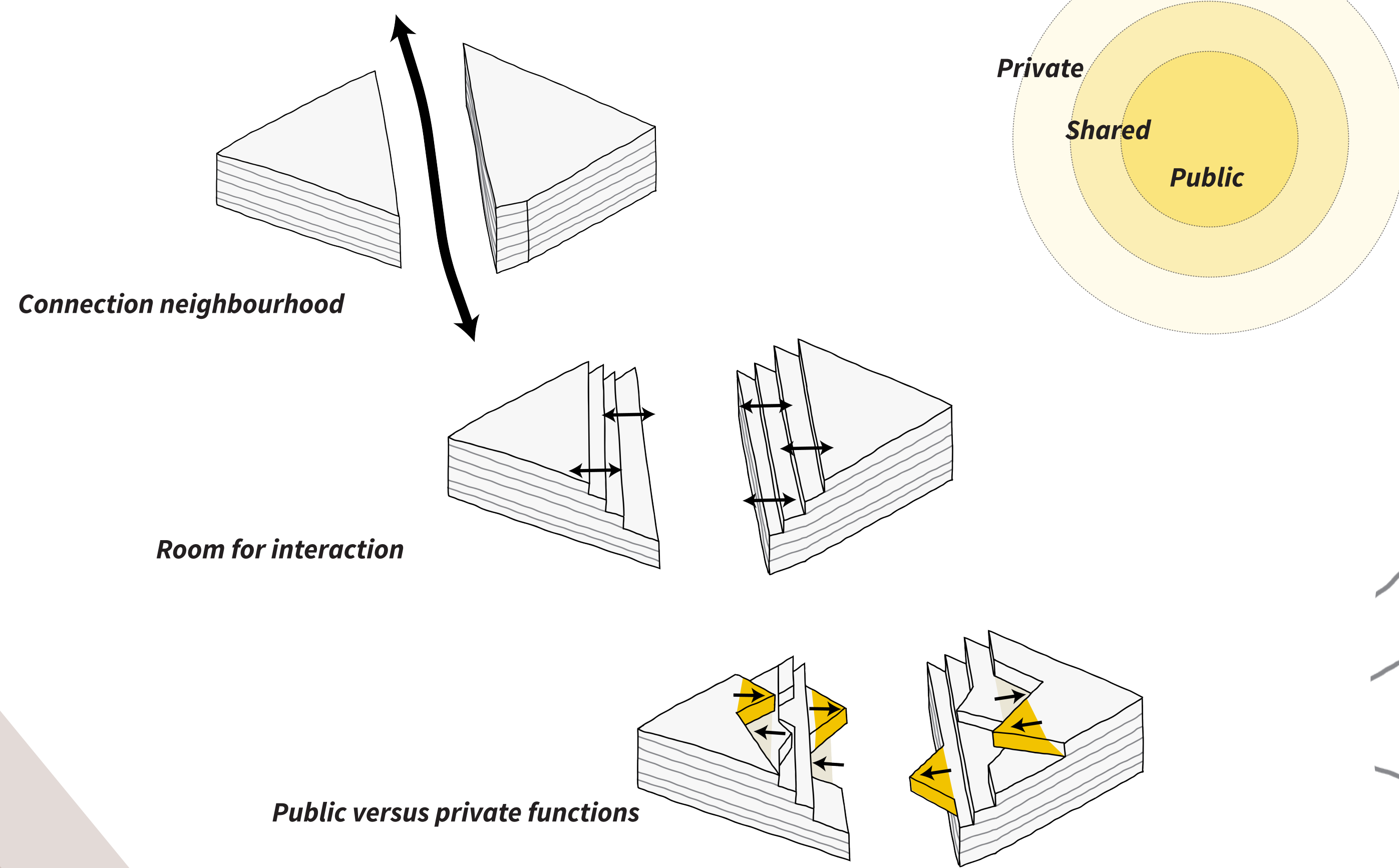


# Robur Valley

Studio 7 CLT x M4H  
Lisabelle Sengonul 0944286

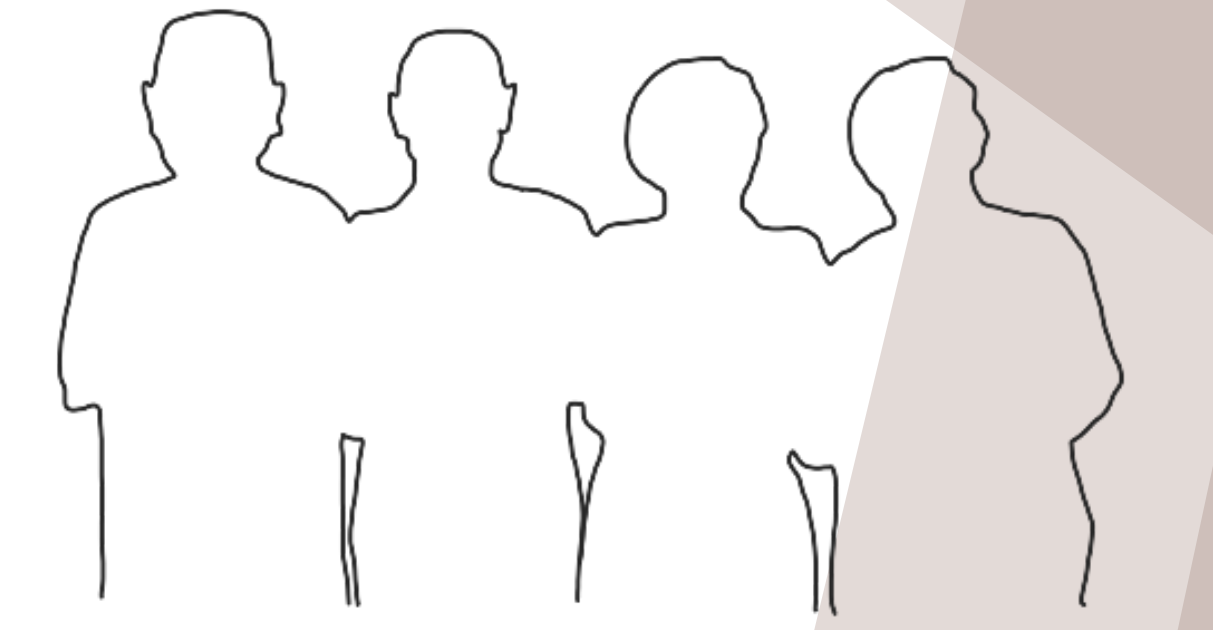


## Sustainable living

Many people live in homes that no longer match their needs. By offering housing solutions tailored to their current lifestyles—comfortable, affordable, and community-oriented—people can enjoy a more practical living arrangement while freeing up valuable housing stock for others. This flow is what we need in our city to ensure this basic need for our residents.

## Affordable housing

Single professionals face a significant barrier to independent living due to high housing costs and limited options. This project aims to create pathways for single starters by rethinking shared housing models and fostering financial and social connections between them and empty nesters, benefiting both groups through collaboration and support.



## A neighborhood

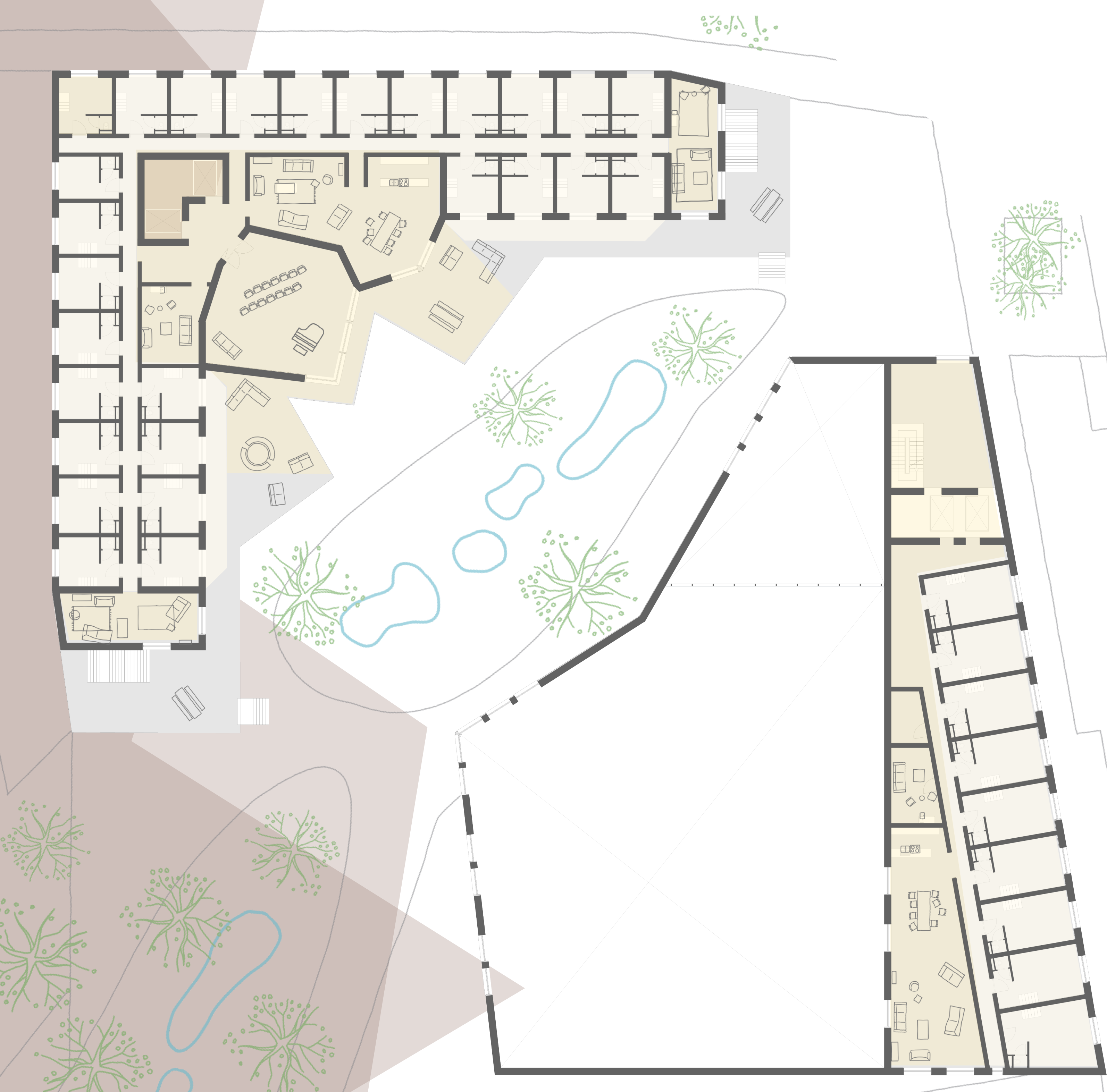
A strong social network is one of the most valuable assets in life, it provides practical help and a sense of belonging. The surrounding neighborhoods can create a synergy with Robur valley. Connections can create social opportunities and shared experiences. By providing this connective plan with many public advantages, a thriving social environment is promoted.



## Canyon x valley

The walls of the canyon are layered and serve multiple purposes; housing; shared amenities and public facilities. The transparent extensions and more private corners are a translation of the functions within; shared music/dancing room means outward and exhibited; shared tea-room means inward and reserved. Having two themes divided over the buildings, different activities give reason to cross the valley and explore. One building themed cultural and the other sports also offers richly to the surrounding neighbourhood.

Ground floor functions 1:500



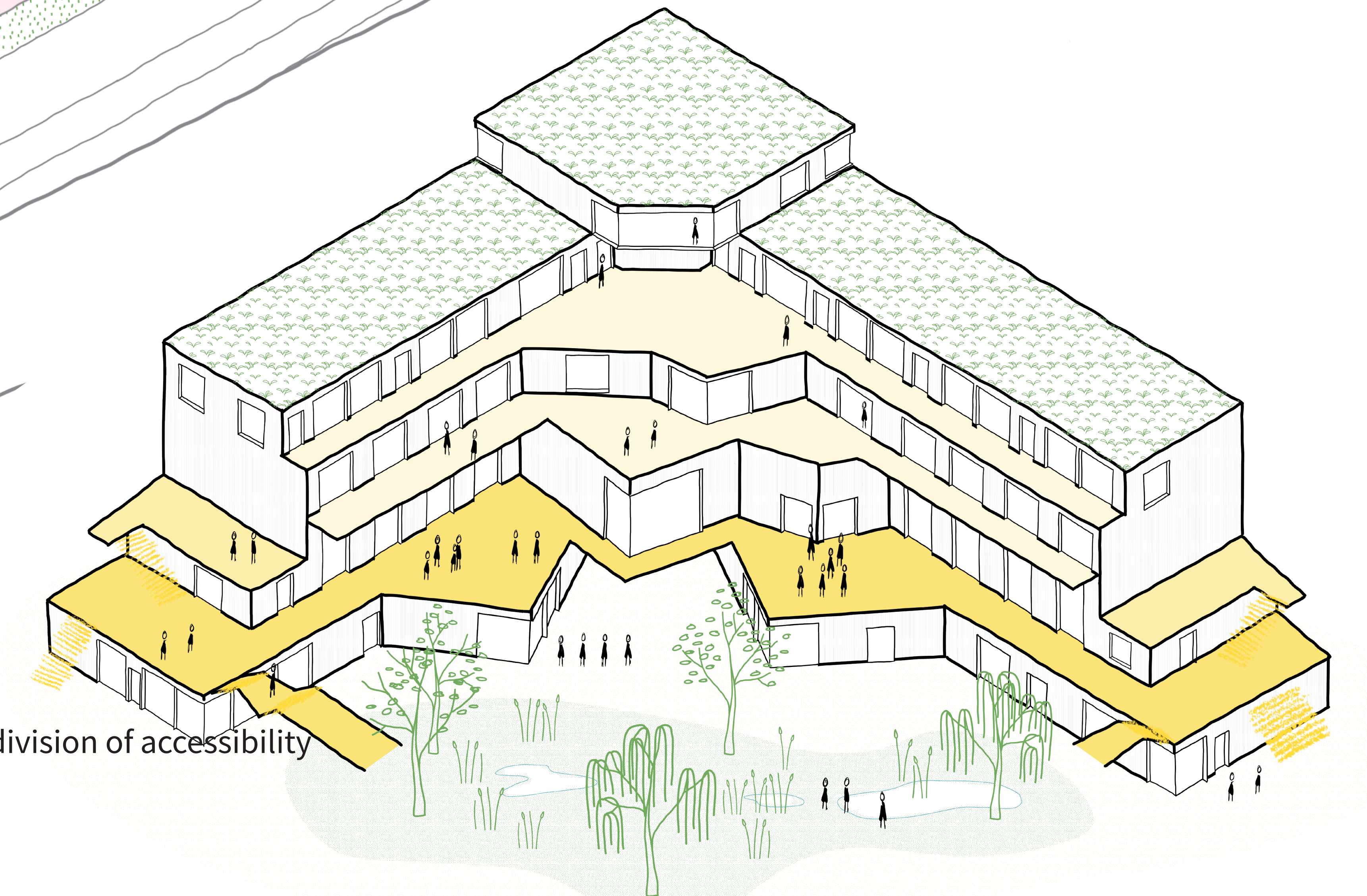
Private and commons ratio single starters  
First floor 1:200



Private and commons ratio empty nesters  
Fourth floor 1:500



Vertical division of accessibility



Layered terraces with varying access

