

ELYSIUM

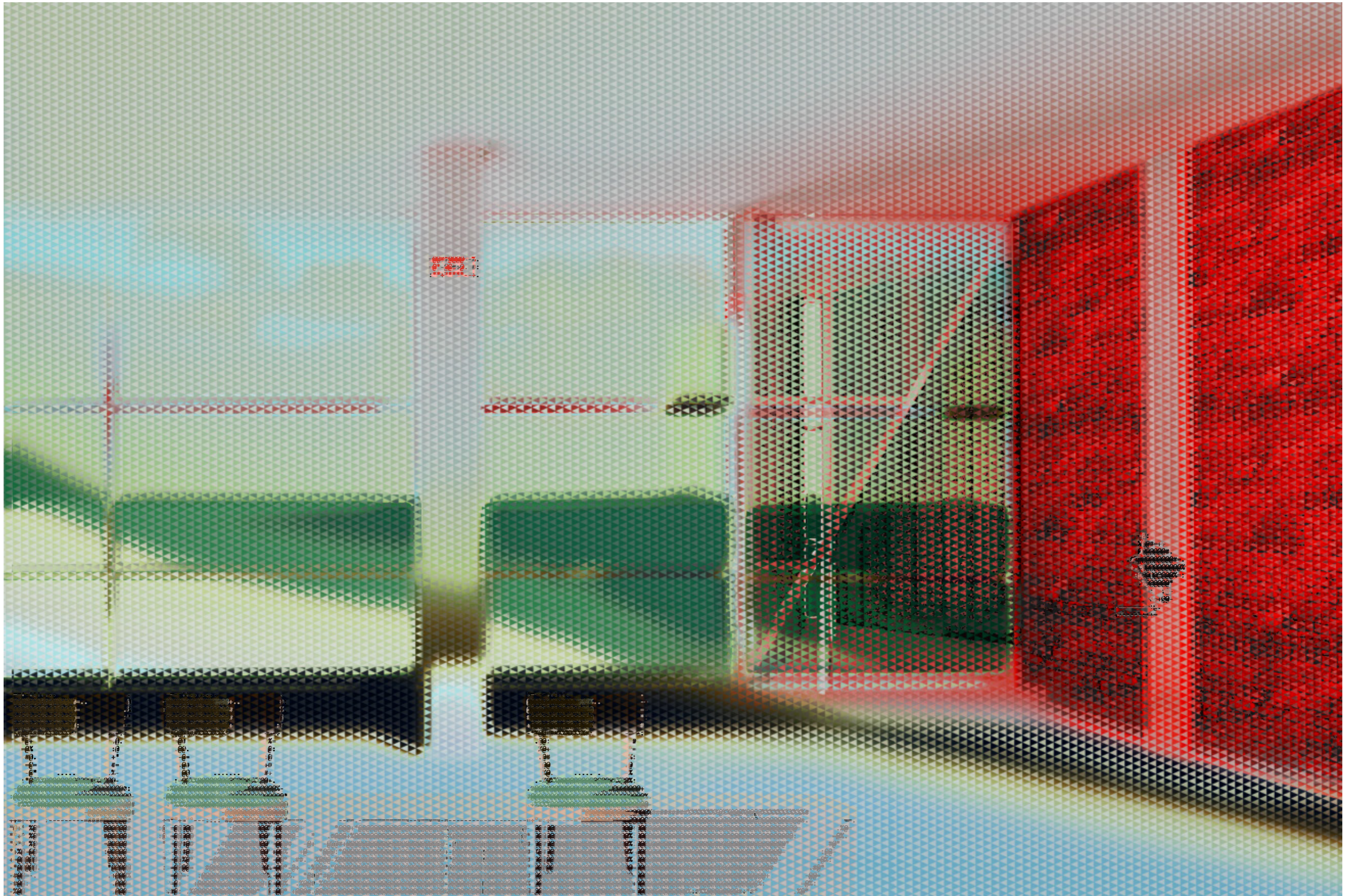
Sequence strategy, concept of ascent and descent

ELYSIUM is a cultural exchange centre, ignited by the visionary collaboration between a Spanish surrealist and an Italian literary classic, both confronting the collapse of established meanings. This resonates deeply with our current global climate, marked by a pandemic, conflicts, technological advances, environmental degradation, and widespread disillusionment. ELYSIUM aims to cultivate a new collective consciousness through a rich tapestry of workshops, seminars, events, performances, and exhibitions, celebrating diverse traditions and cultures.

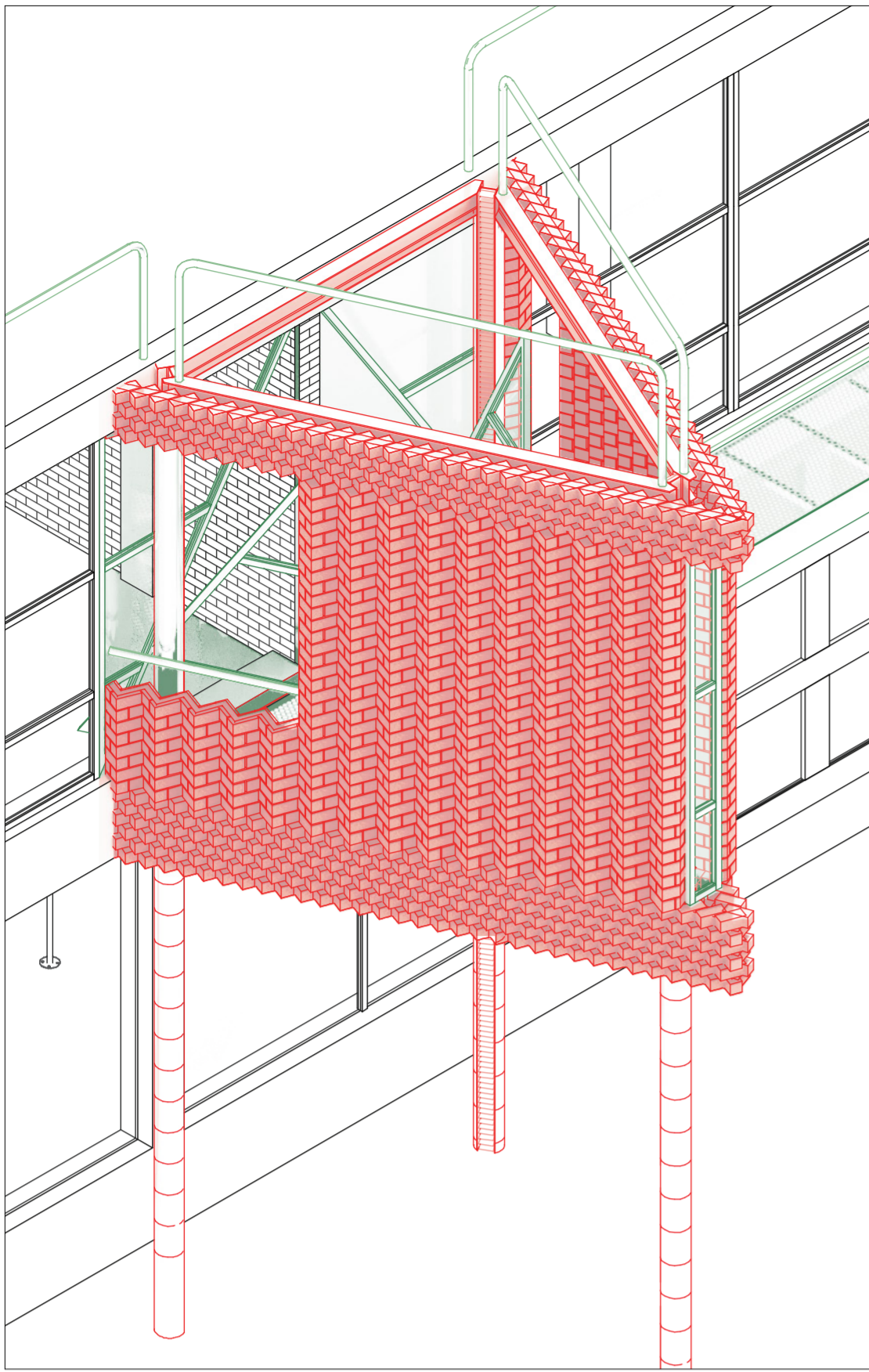
VESTIBULE serves as an inviting gateway, offering tantalizing previews of upcoming workshops. **IX.TREACHERY** (Monster Hall) is a versatile primary workshop space. **III. GLUTTONY** (Auction Hall) and **II.LUST** (Begging indoor Balcony) provide dynamic

social spaces for interaction and relaxation. **I.LIMBO** (Being) acts as the living room, offering contemplative spaces for reflection. **VI.HERESY** (Cantine) is a vibrant area for dining and debate, while **V.WRATH** (Office) offers a hub for brainstorming and reflection. A corridor linking the cantine and office enhances the flow and connection within the context.

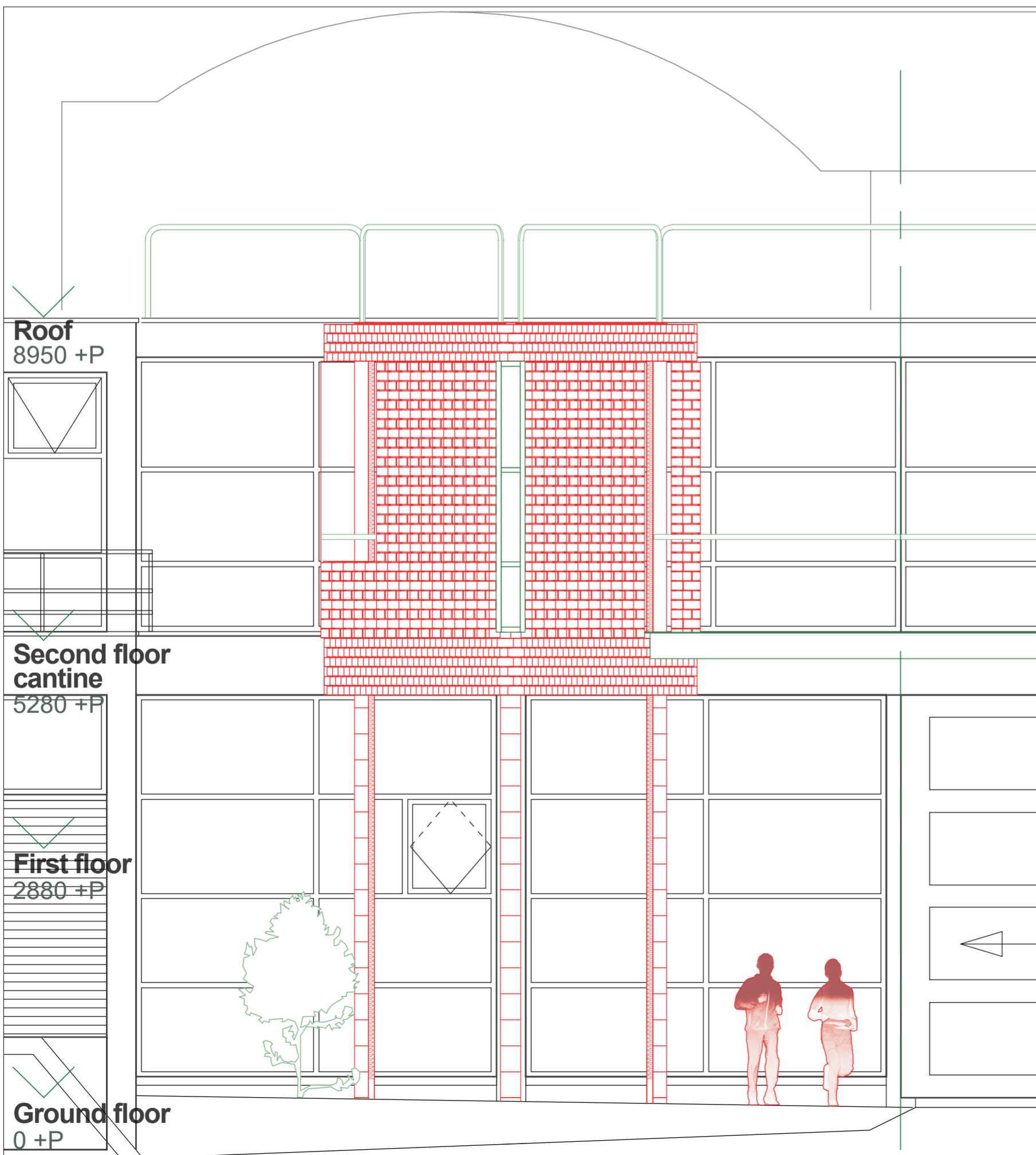
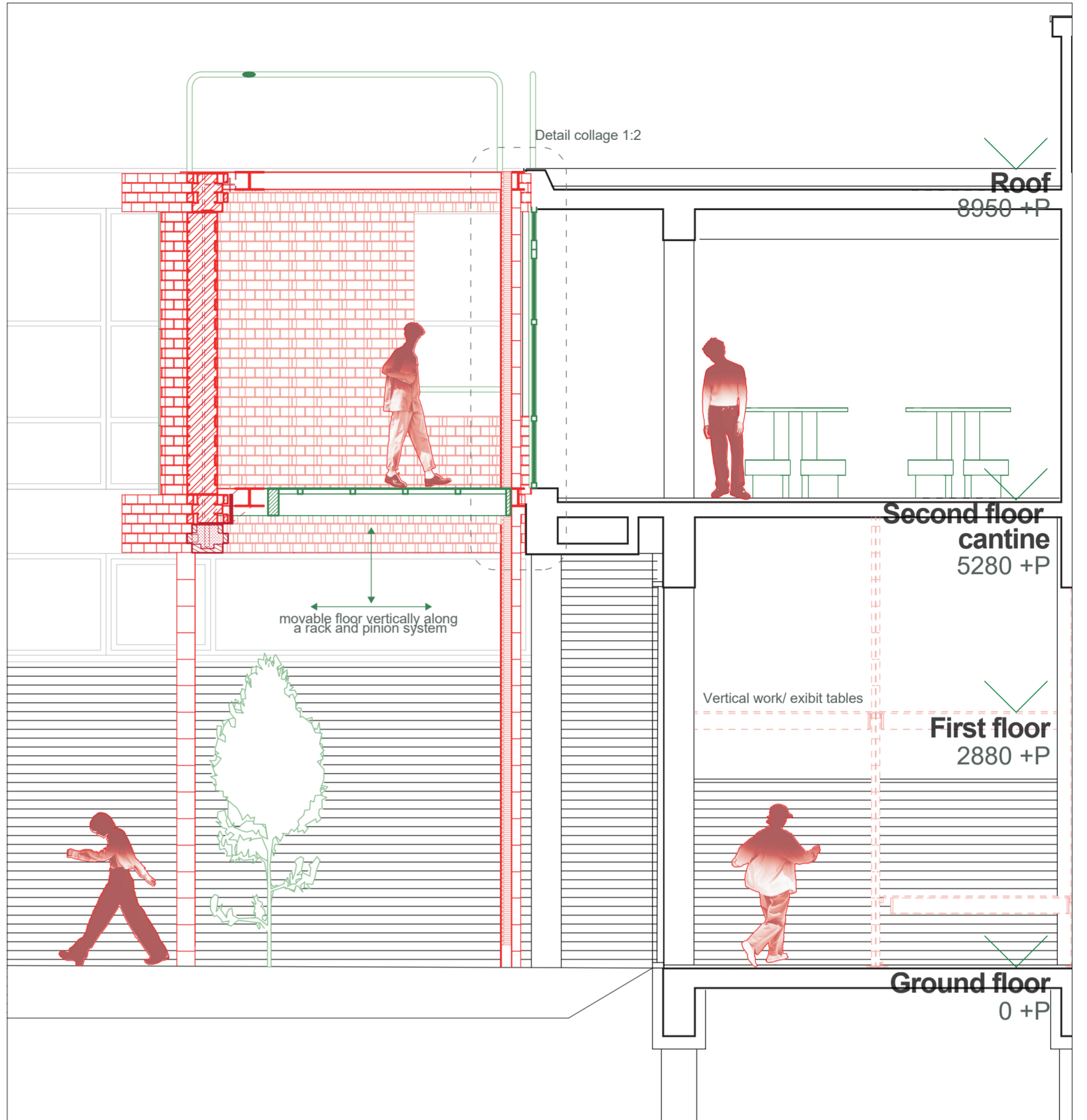
Drawing inspiration from Dante's "Inferno," ELYSIUM's design represents a transformative journey through various realms. Pathways connect previously isolated rooms, symbolizing a unified journey akin to Dante's. The descent and ascent embody deeper integration and connection, mirroring the quest for enlightenment. The outdoor balcony evokes Dante's reflective moments looking upon the suffering souls, offering a removed yet contemplative perspective for occupants. Influenced by OMA's Fondation Galeries Lafayette in Paris, ELYSIUM boasts a unique "exhibition tower" with a movable floor. An automated rack and pinion system aligns platforms with existing floor levels, creating a new connection with the roof. Workshop tables mimic this mechanism, allowing for site-specific works and dynamic interior layouts, transforming ELYSIUM into a "curatorial machine."



Concept collage cubomania; ASCII overlay cantine objects, trespassing.

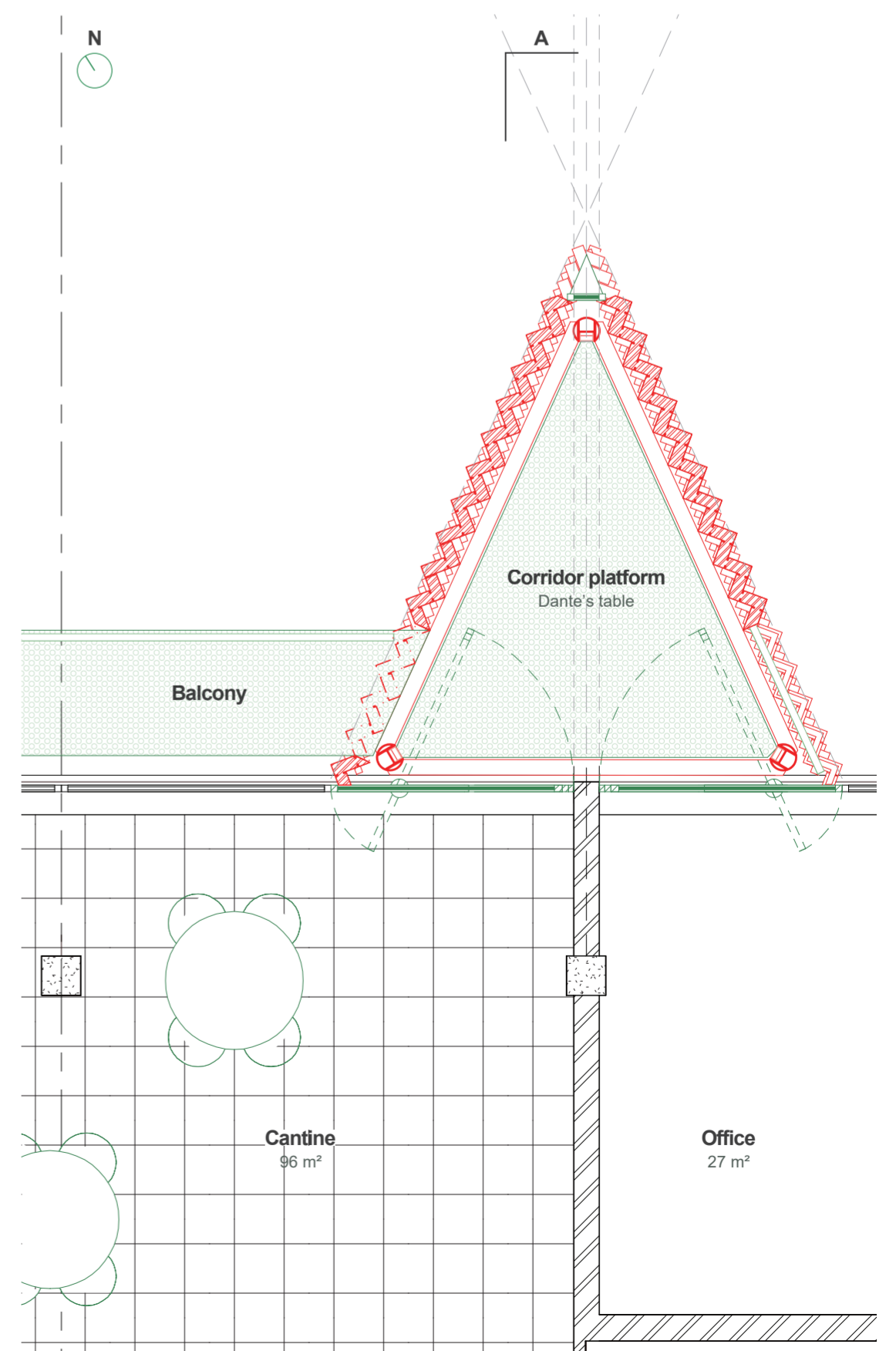


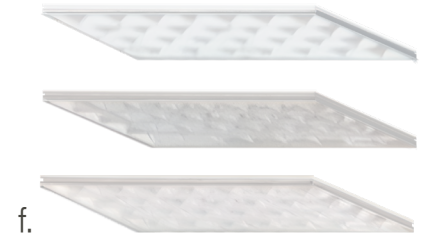
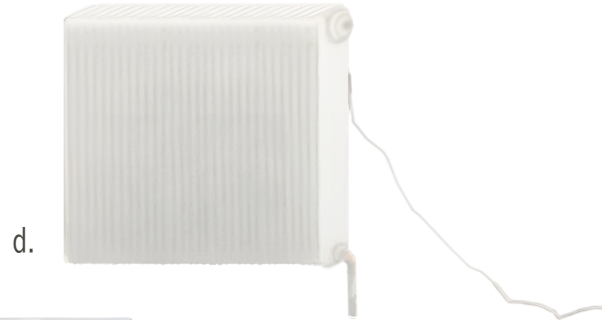
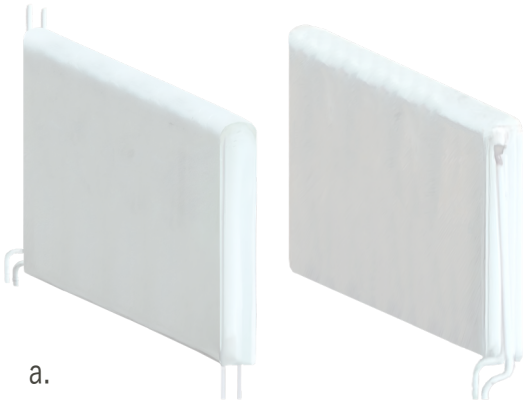
AXO Corridor; Dante's table; *Construction, rack and pinion system vertical floor.*



Elevation Back facade scale 1:50; *Surreal delicacy juxtaposes the rough jagged exterior.*

Plan second floor scale 1:50; *Transitional journey; Unconventional spatial intervention.*





In designing the canteen, integrating mundane objects in innovative ways can enhance its atmosphere and align with the concept of accent and decent. The lever is one of the more influential objects found. This approach not only adds a unique aesthetic but also provides a tactile and interactive environment. By creatively reimagining everyday items, the canteen can transform into a dynamic space that resonates with the core themes of project ELYSIUM.

