

Living between Nature

Being Neighbours Jorien Ripper

Concept:
Co-housing is a form of living where a group of people share certain spaces and facilities, fostering interactions and connections between neighbors. In the "Living between Nature" project, good neighborliness extends beyond adjacent residents to include the wider community and animals.

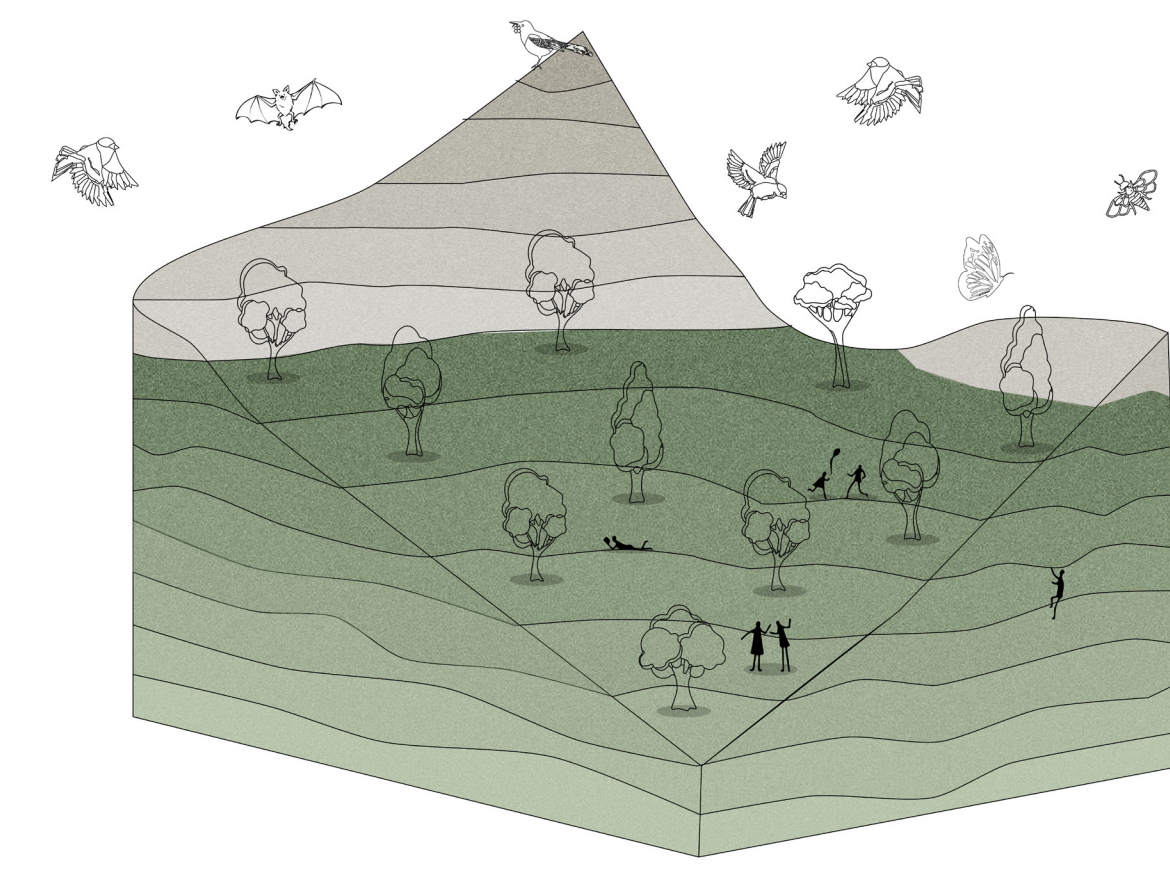
In this co-housing model, shared spaces are created that are valuable for both humans and animals. Green, natural areas connect the inhabitants and enhance the living environment for all. This leads to encounters and interactions between people and animals. In urban life, the connection between humans, animals, and the environment is often blurred, but in this building, they are in direct contact with each other.

The apartment complex houses both people and animals, who are connected through a green, natural environment. Green spaces have a positive effect on both, providing a sense of freedom and safety, leading to relaxation and a pleasant living environment.

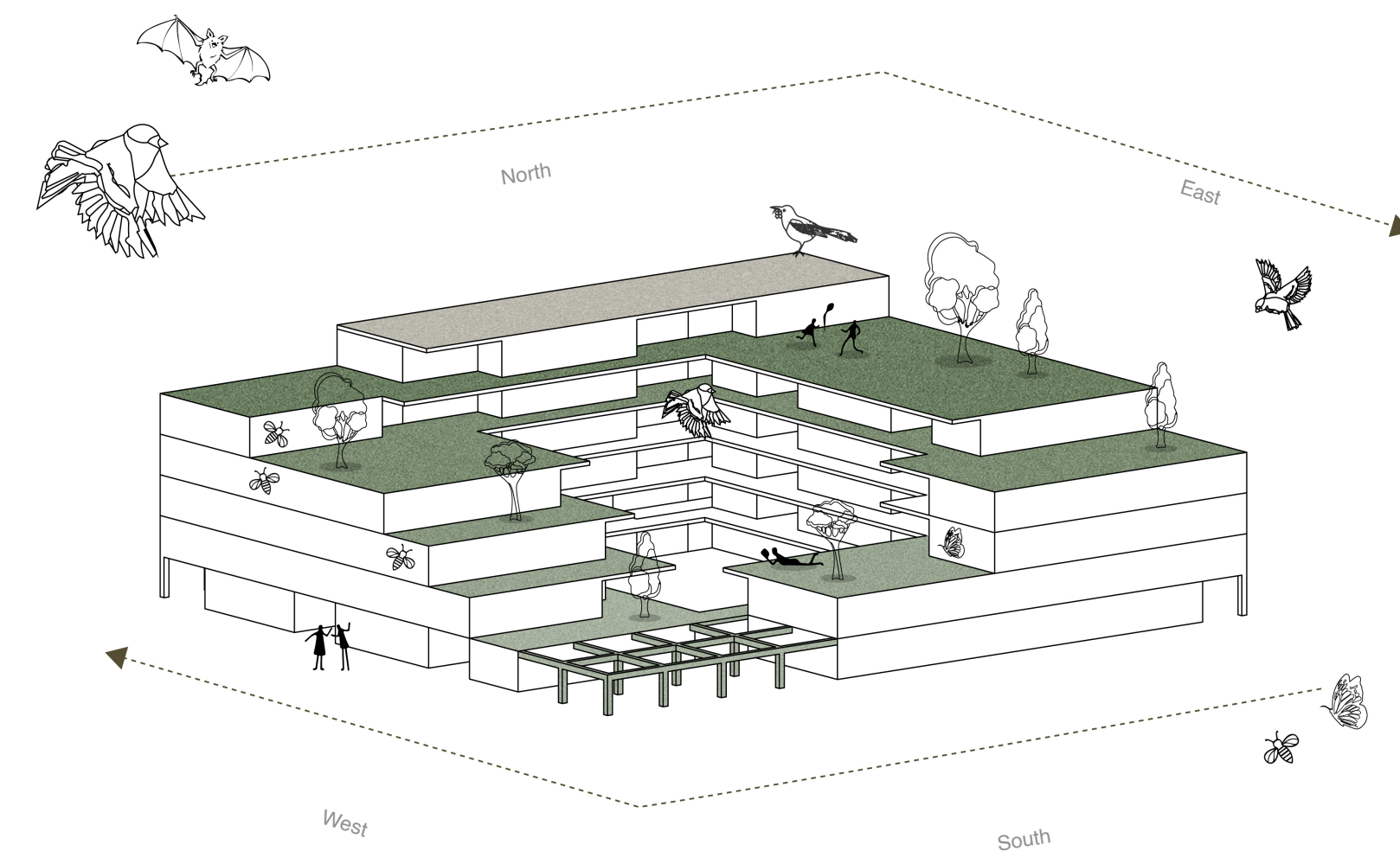
A natural, green environment offers a pleasant living space for the human residents. Outdoor living, hearing birds sing, and having a view of greenery from the apartments provide relaxation and tranquility.

The numerous public green spaces invite residents to live outside and step out of their apartments. These areas provide a spacious outdoor environment that is desirable in an urban setting. The communal maintenance of the green areas fosters interactions among residents and strengthens community bonds.

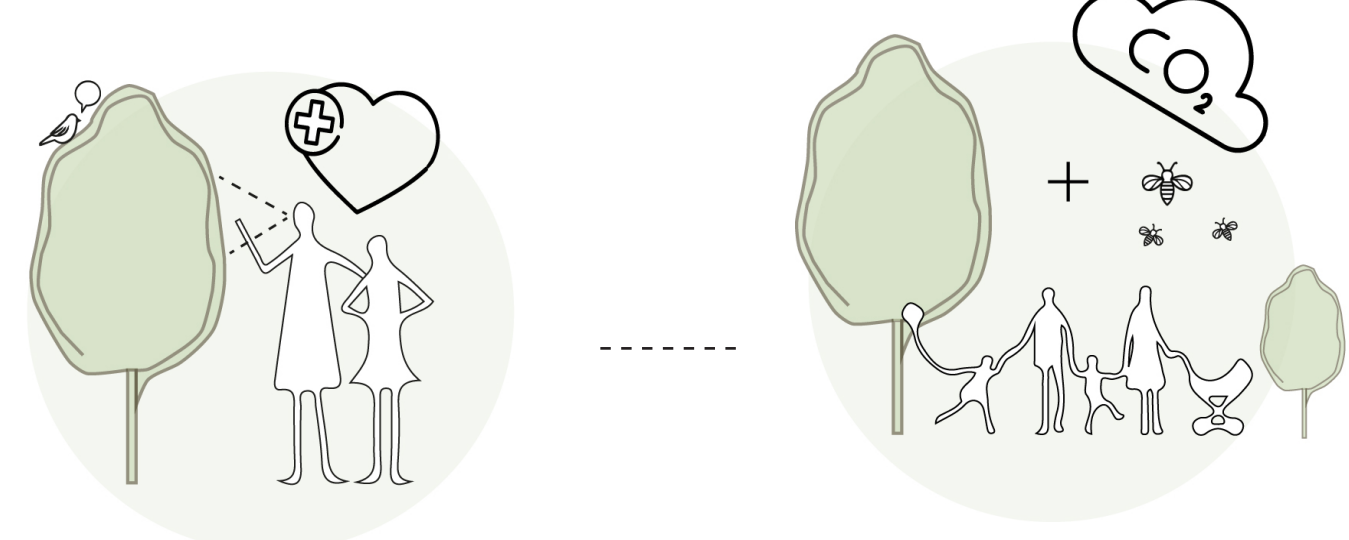
People:
In a co-housing project Living between Nature, diverse groups such as small families, couples, and singles find an ideal living environment. Residents are committed to fostering a healthy living space and appreciate the benefits of a community-oriented living arrangement. Environmentally conscious individuals and animal lovers collaborate to maintain green spaces and promote sustainability. They value the shared responsibility and the opportunity to live in a harmonious environment where both humans and animals coexist. Together, they create a vibrant, relaxed community where living between nature and cooperation take center stage.



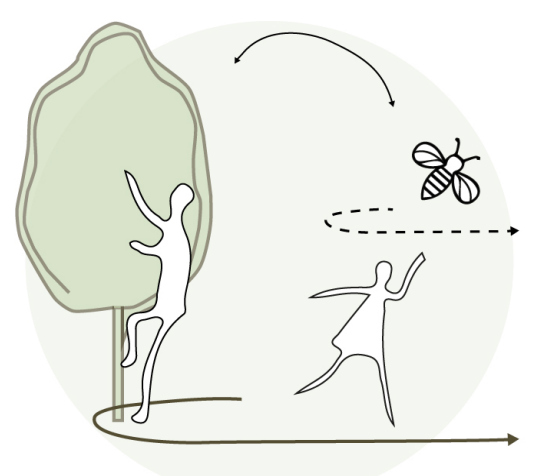
Concept: 'Rock and the valley'



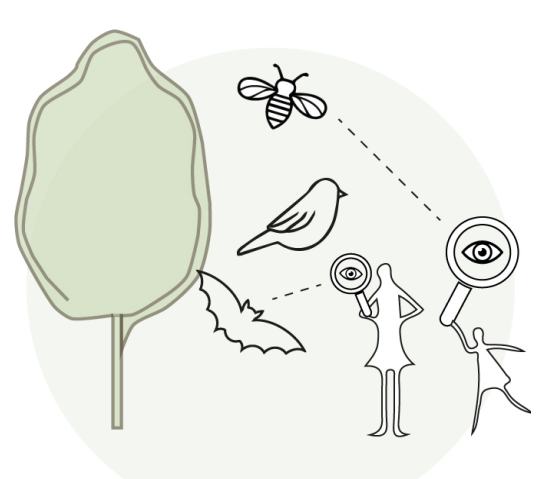
Concept building level



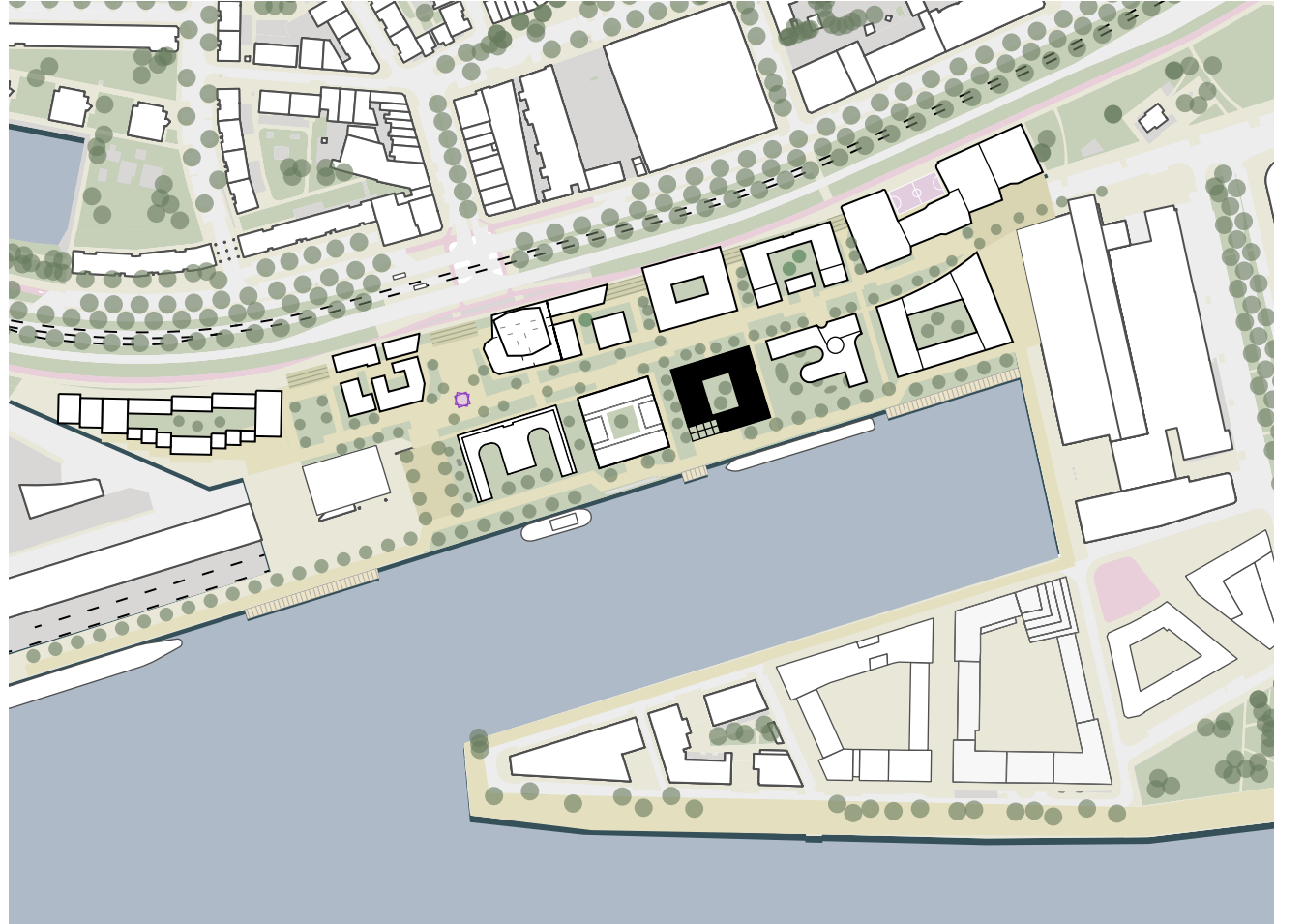
Health



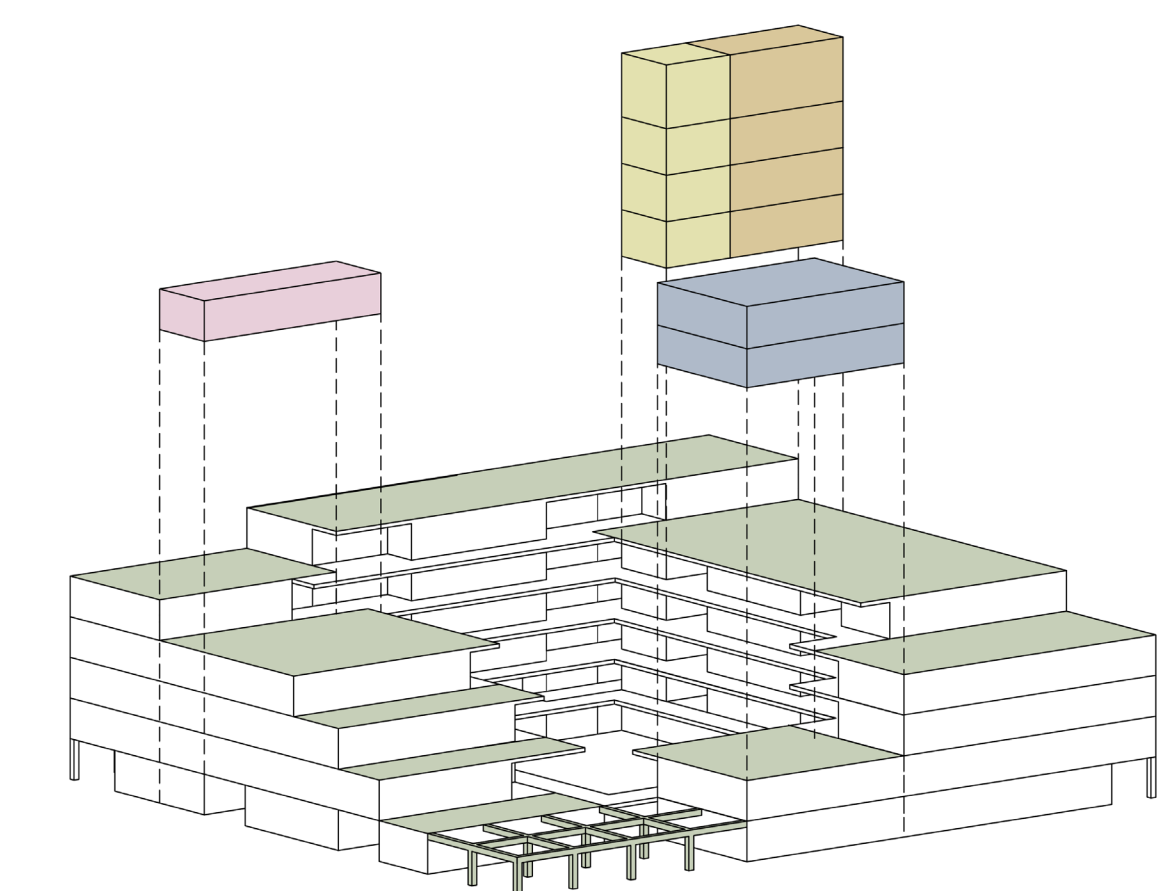
Move



Learning

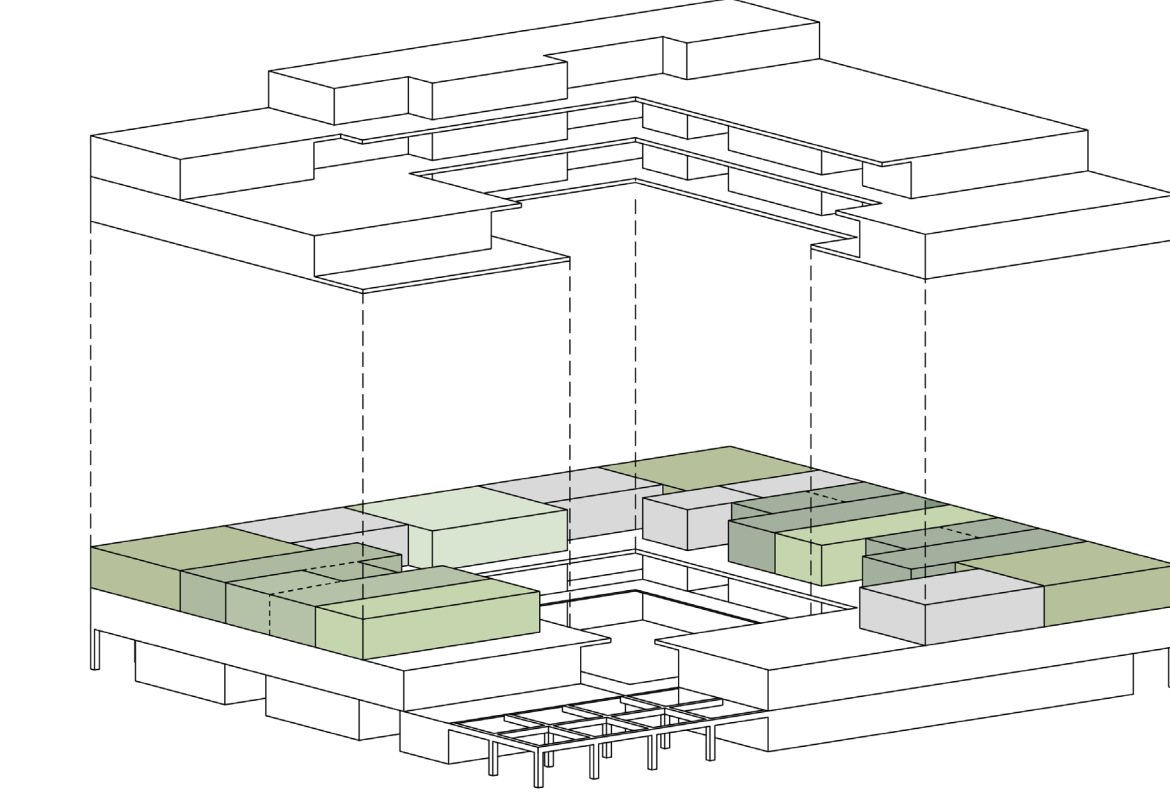


Location 1:4000

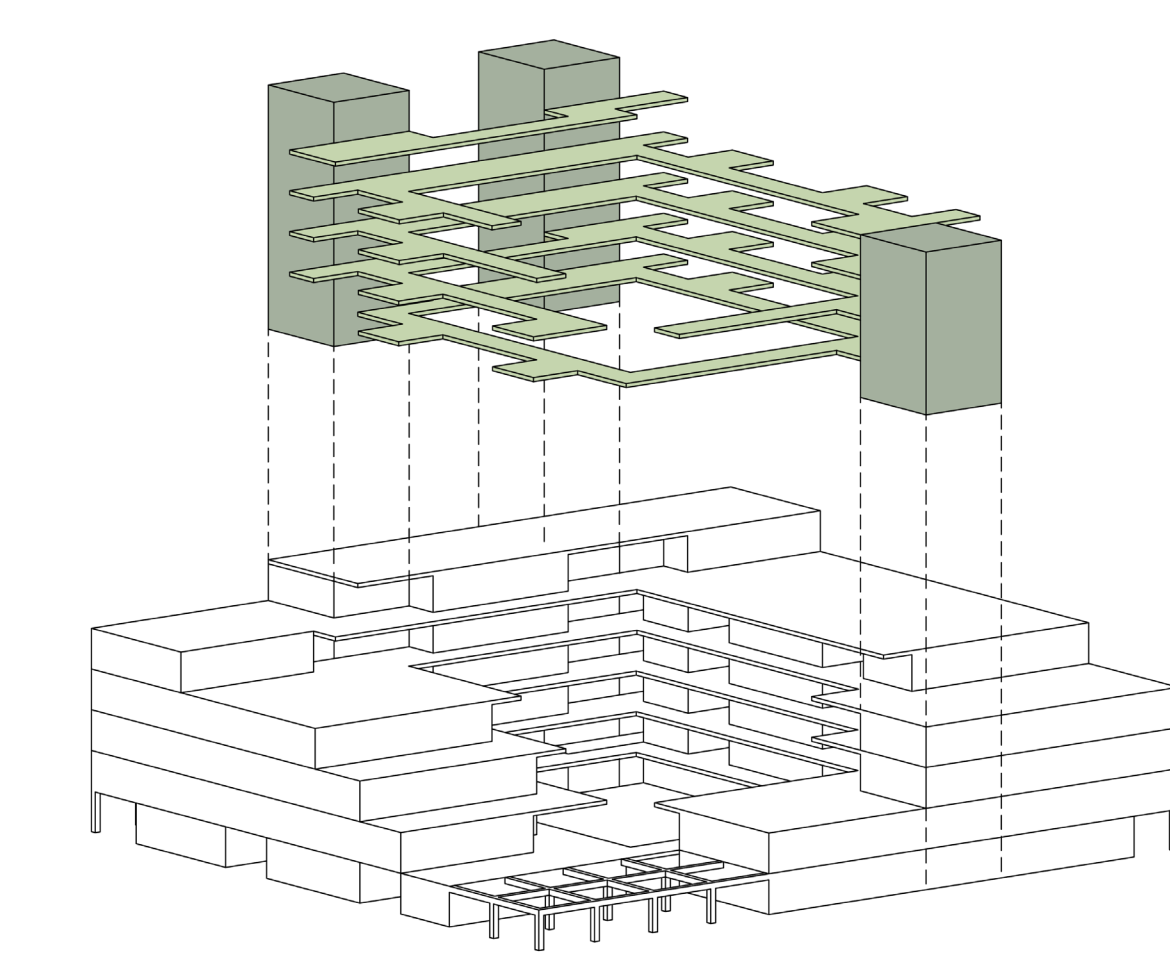


- Collective gardens
- Bicycle storage
- Orangery
- Laundry
- Storage

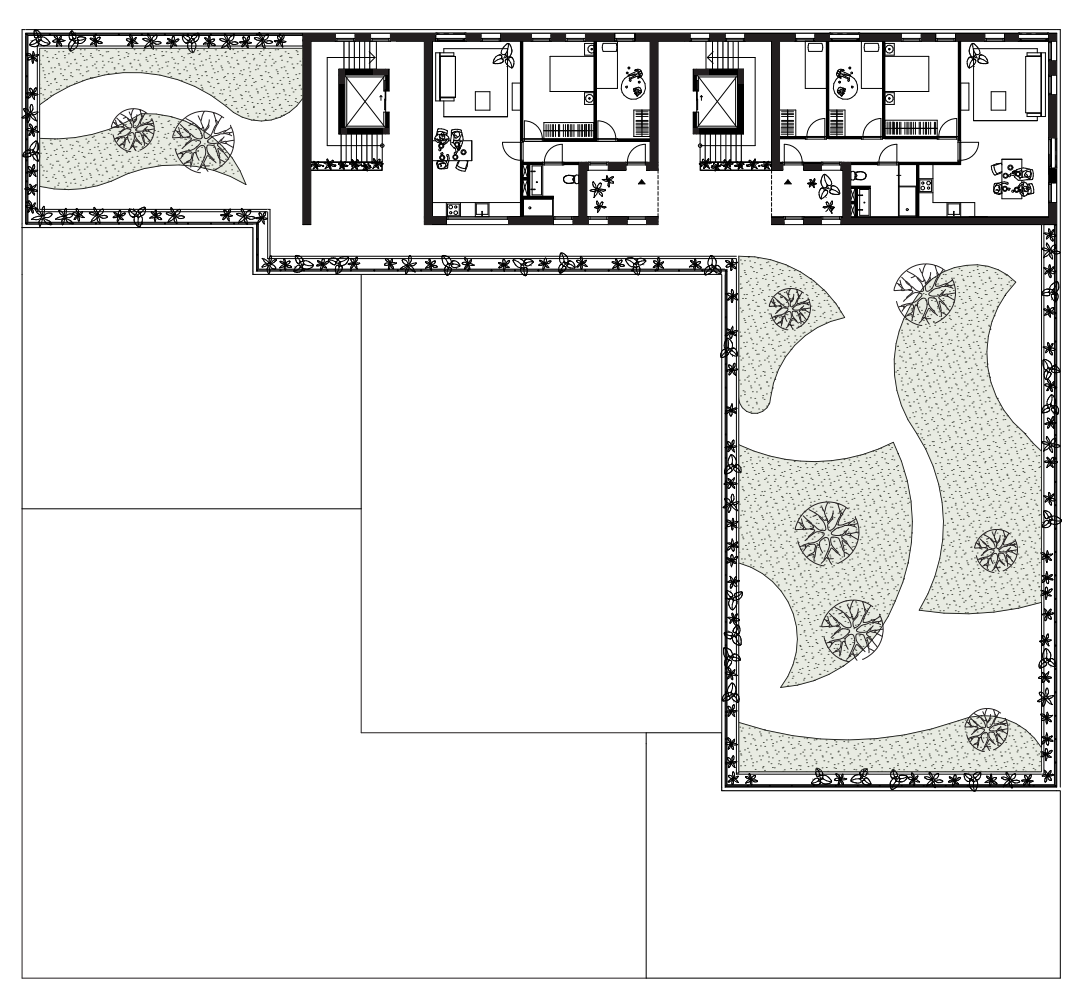
Collective function's



Living typologies



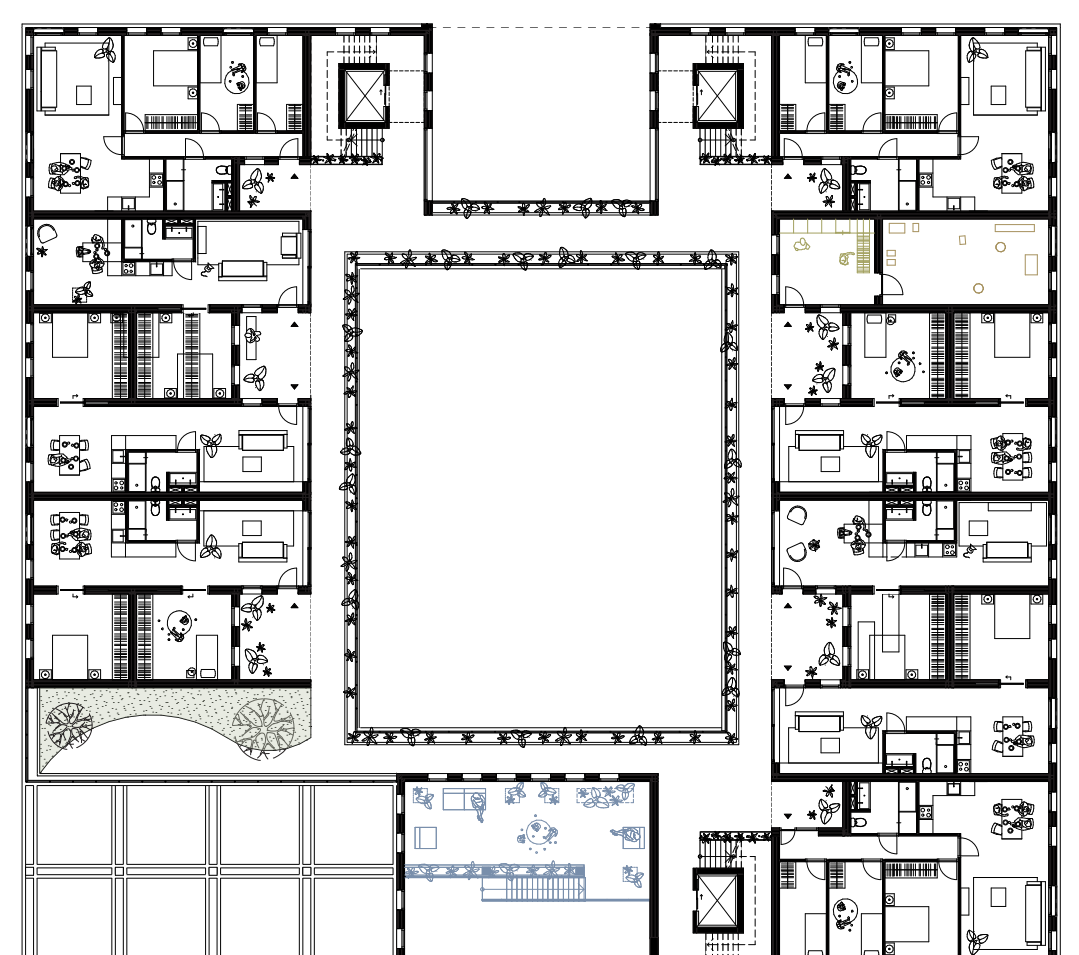
Circulation



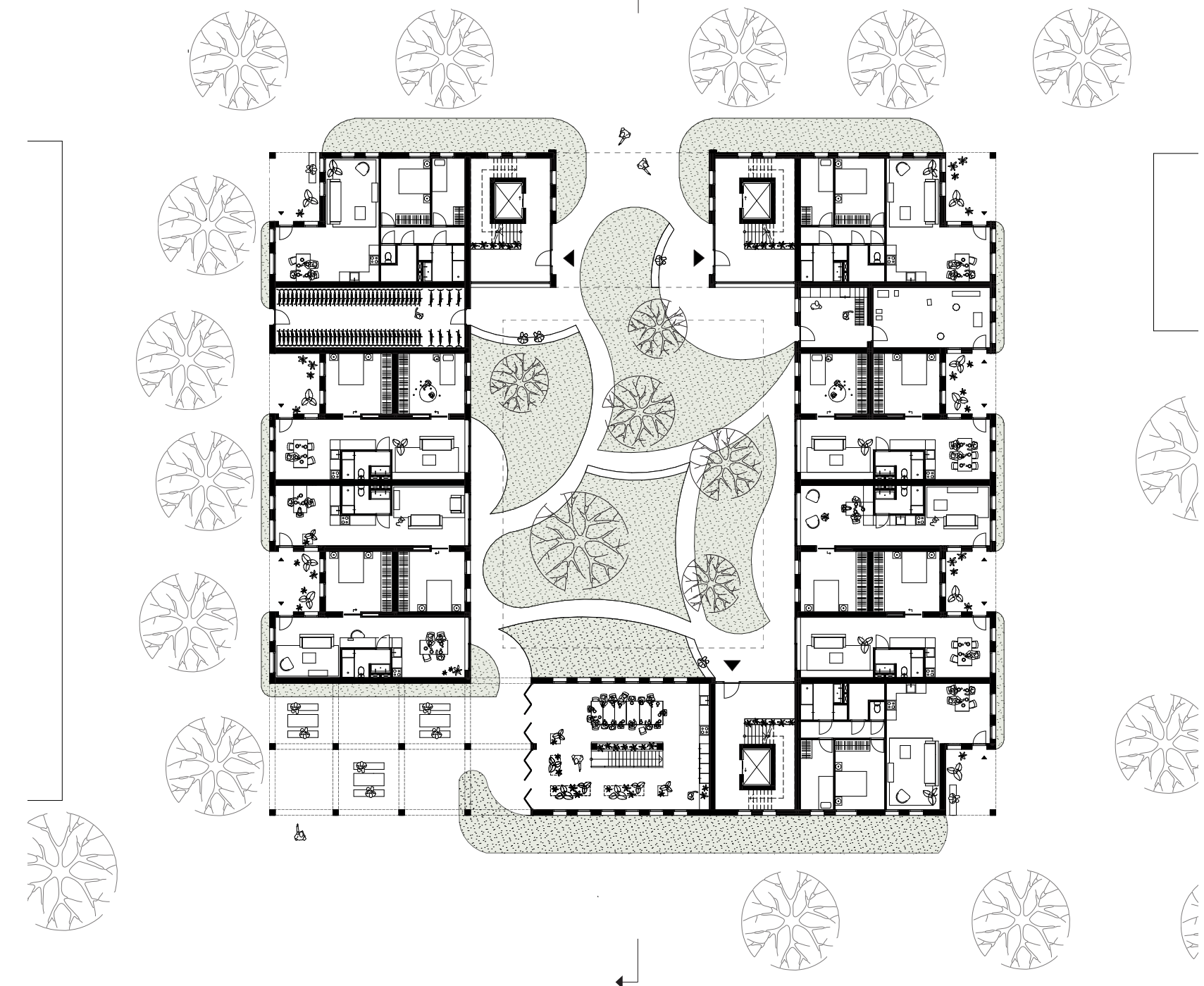
Fifth floor 1:300



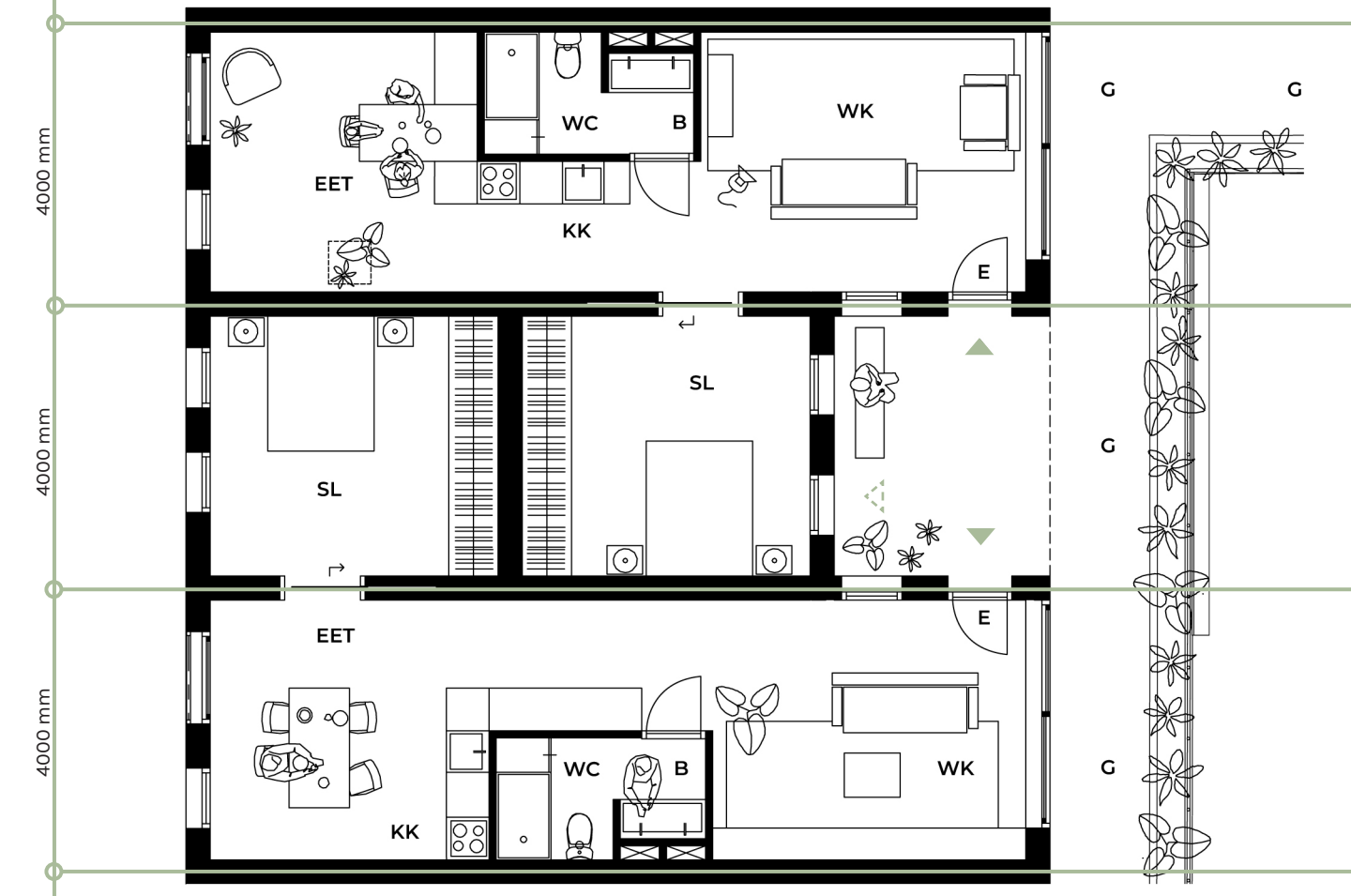
Third floor 1:300



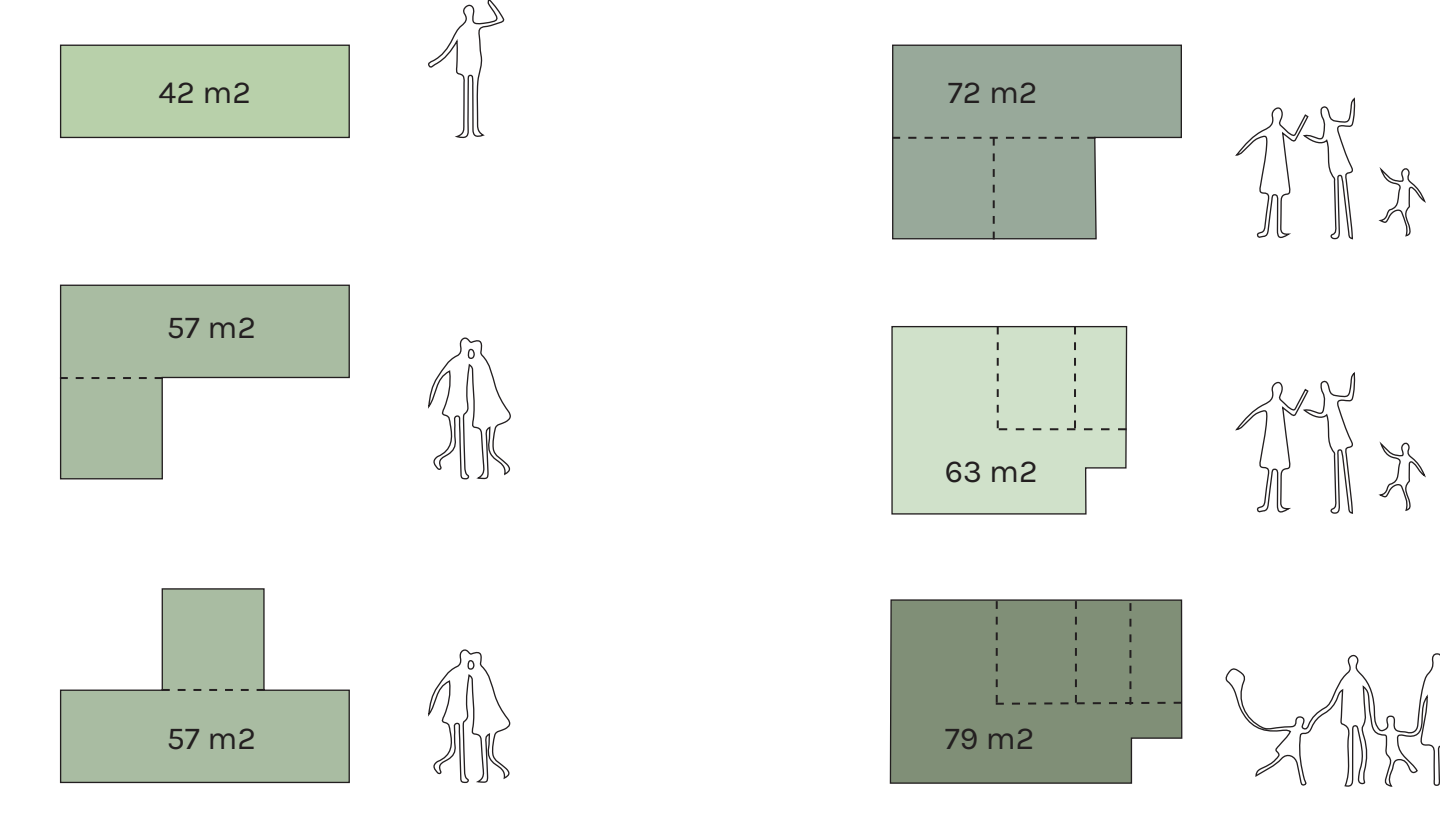
First floor 1:300



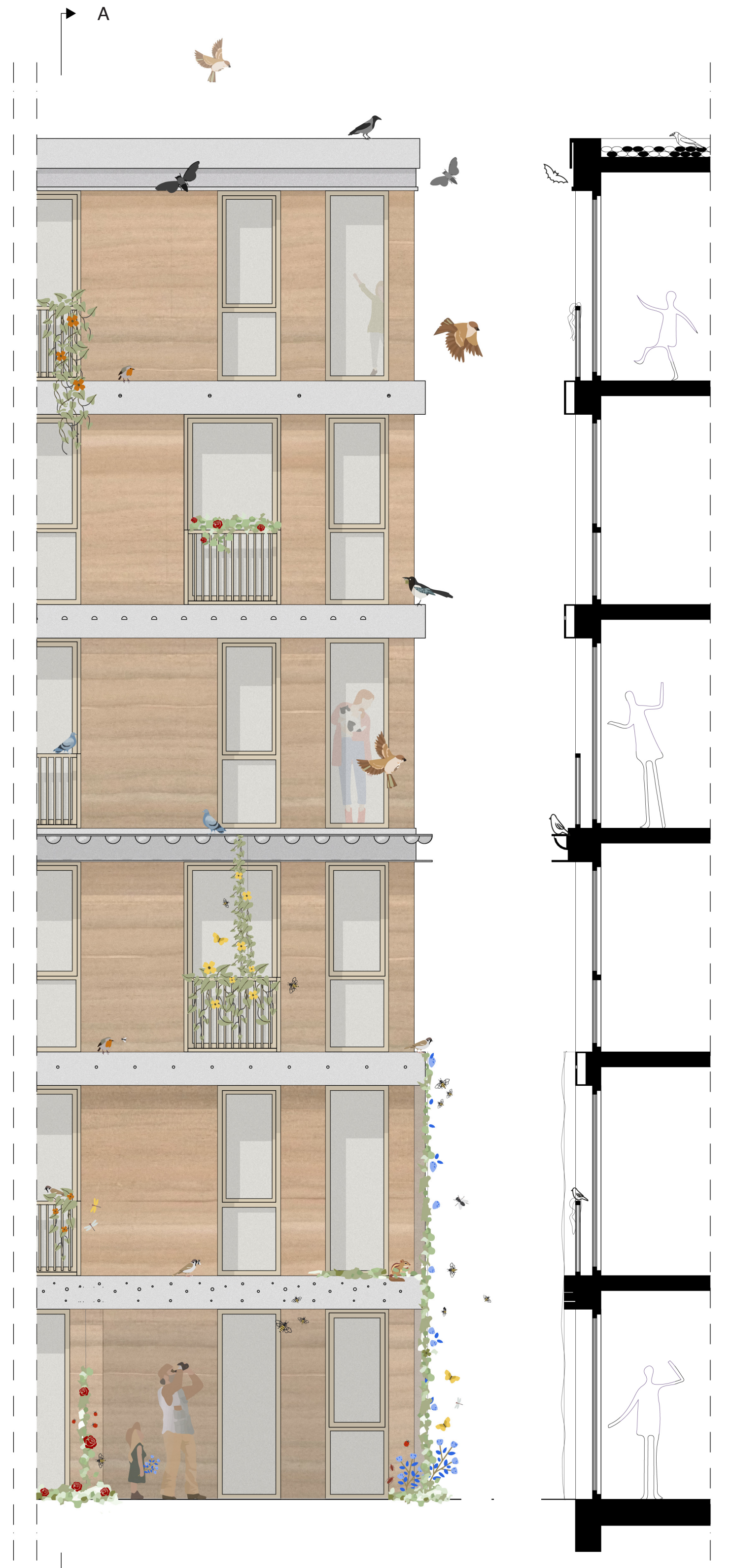
Ground floor 1:300



Living layout 1:100

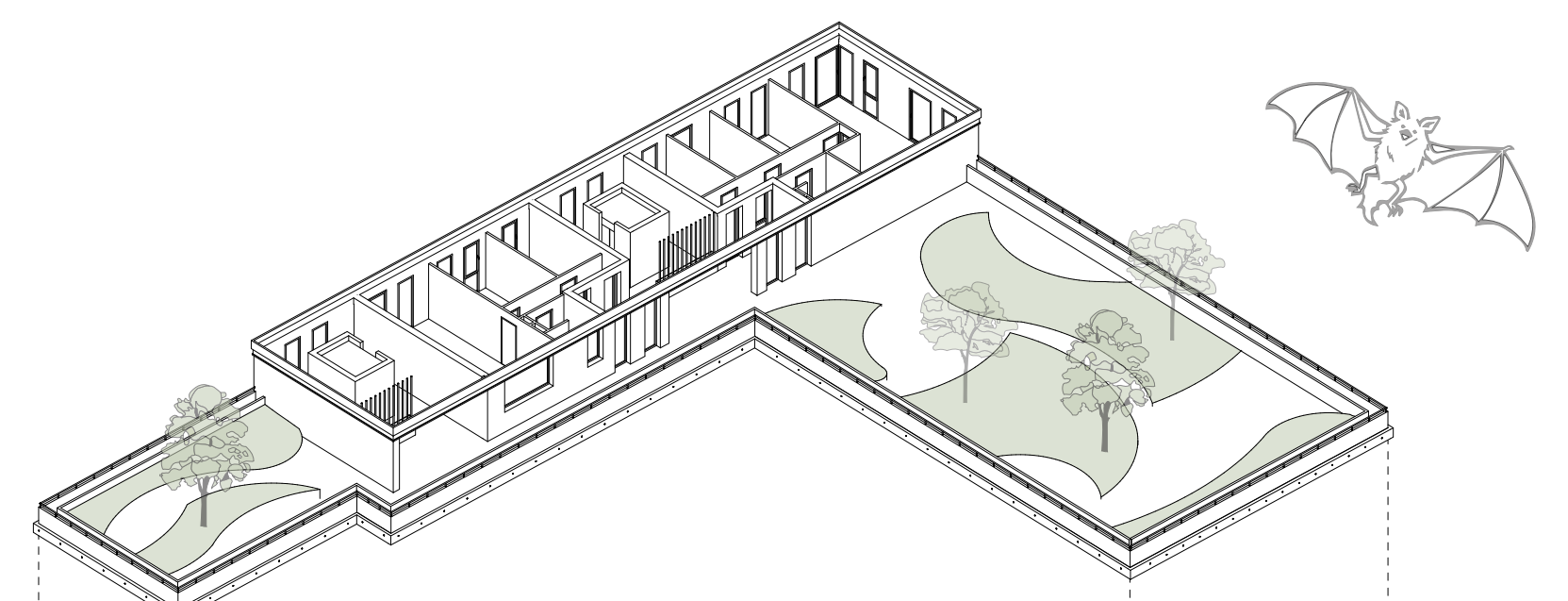


Living typologies

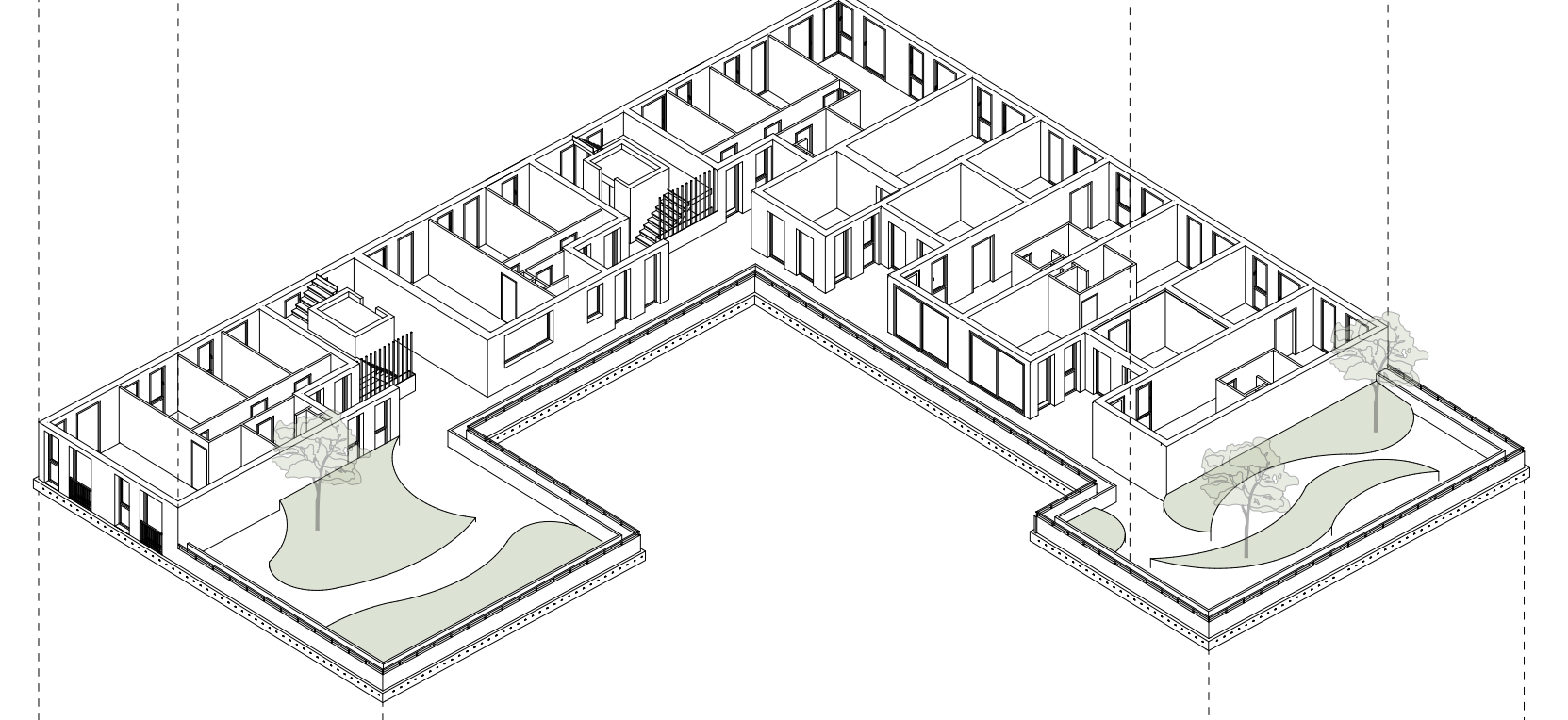


Facade fragment 1:50

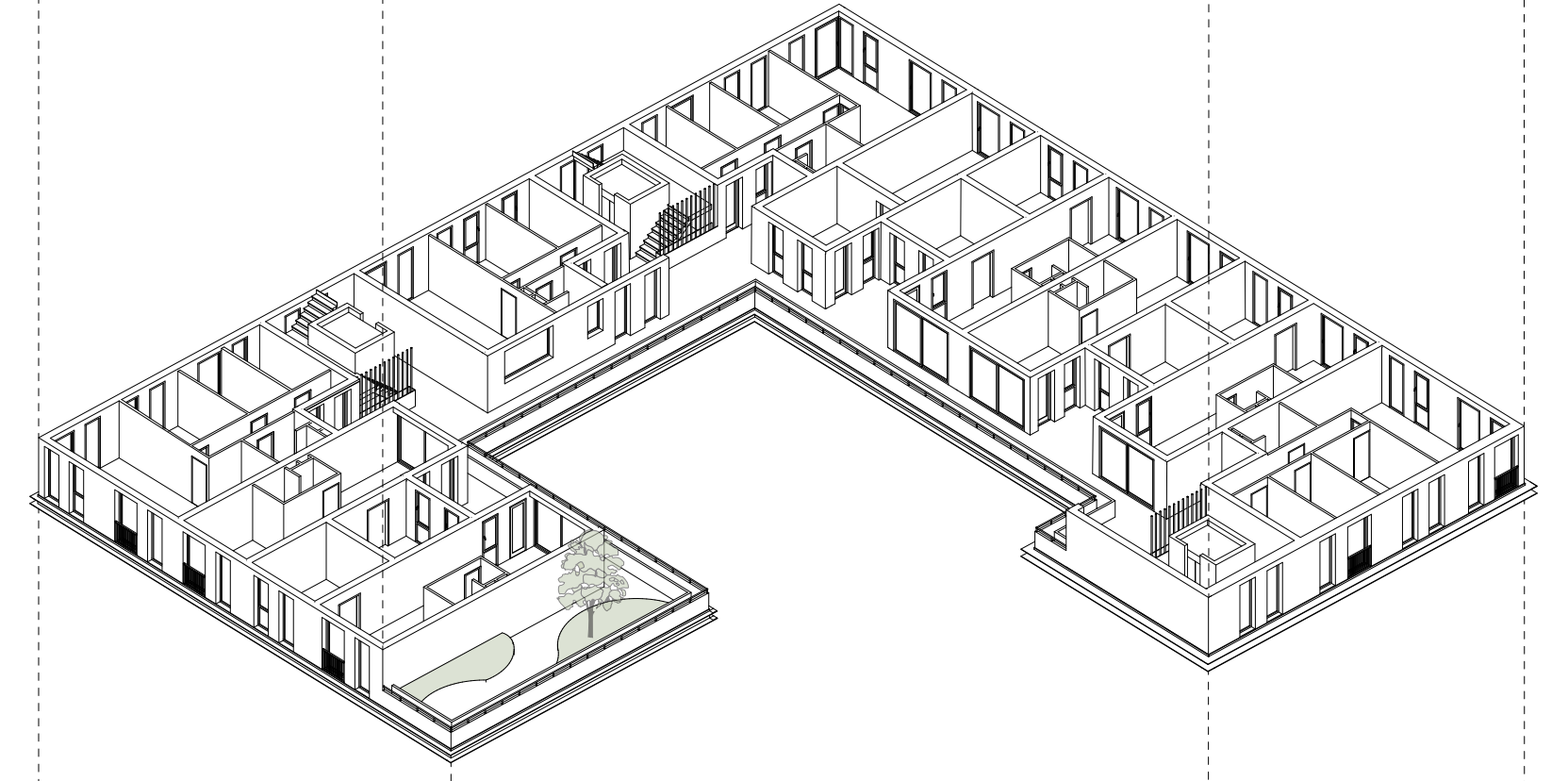
Intersection A-A 1:50



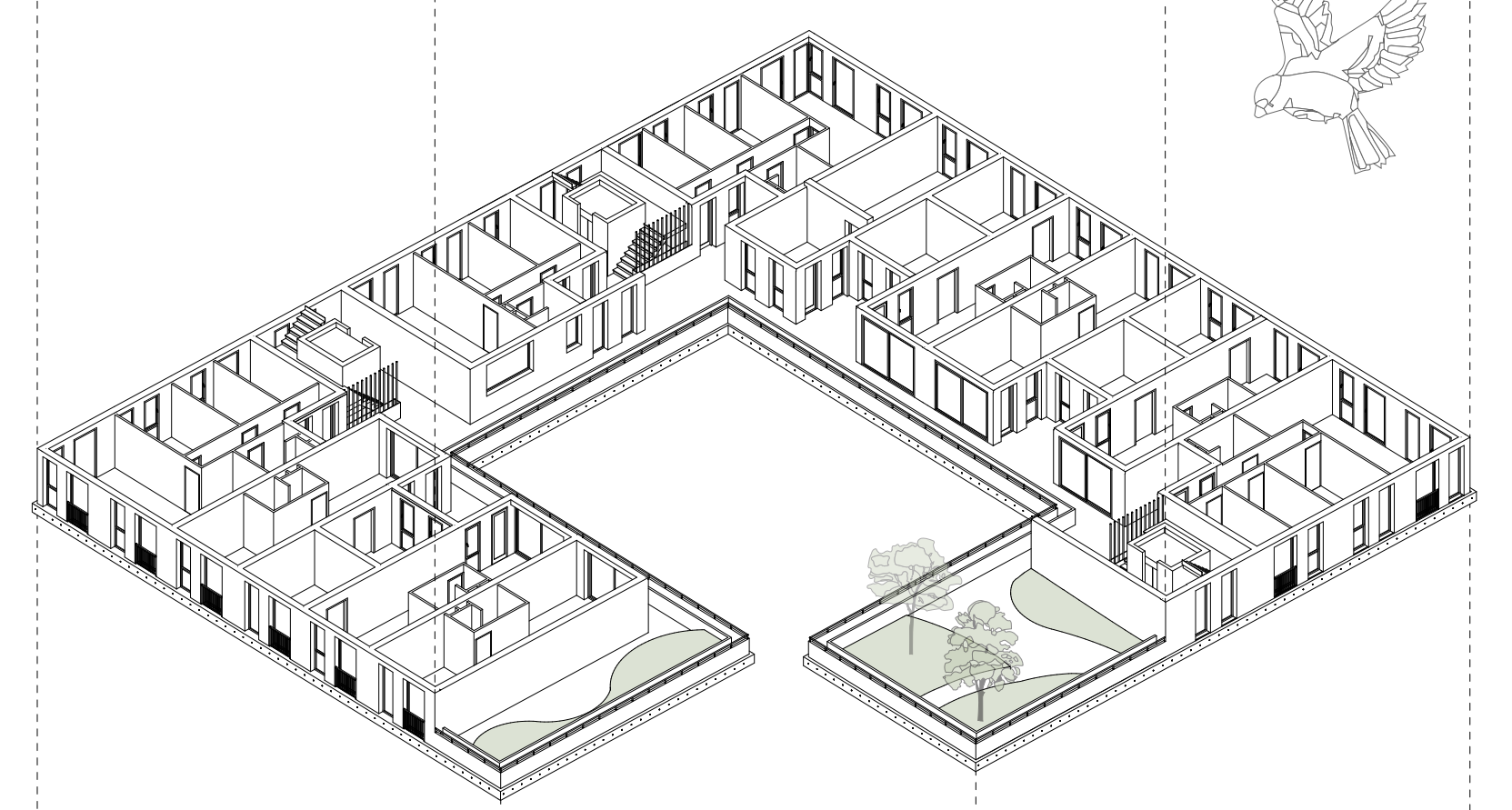
Fifth floor



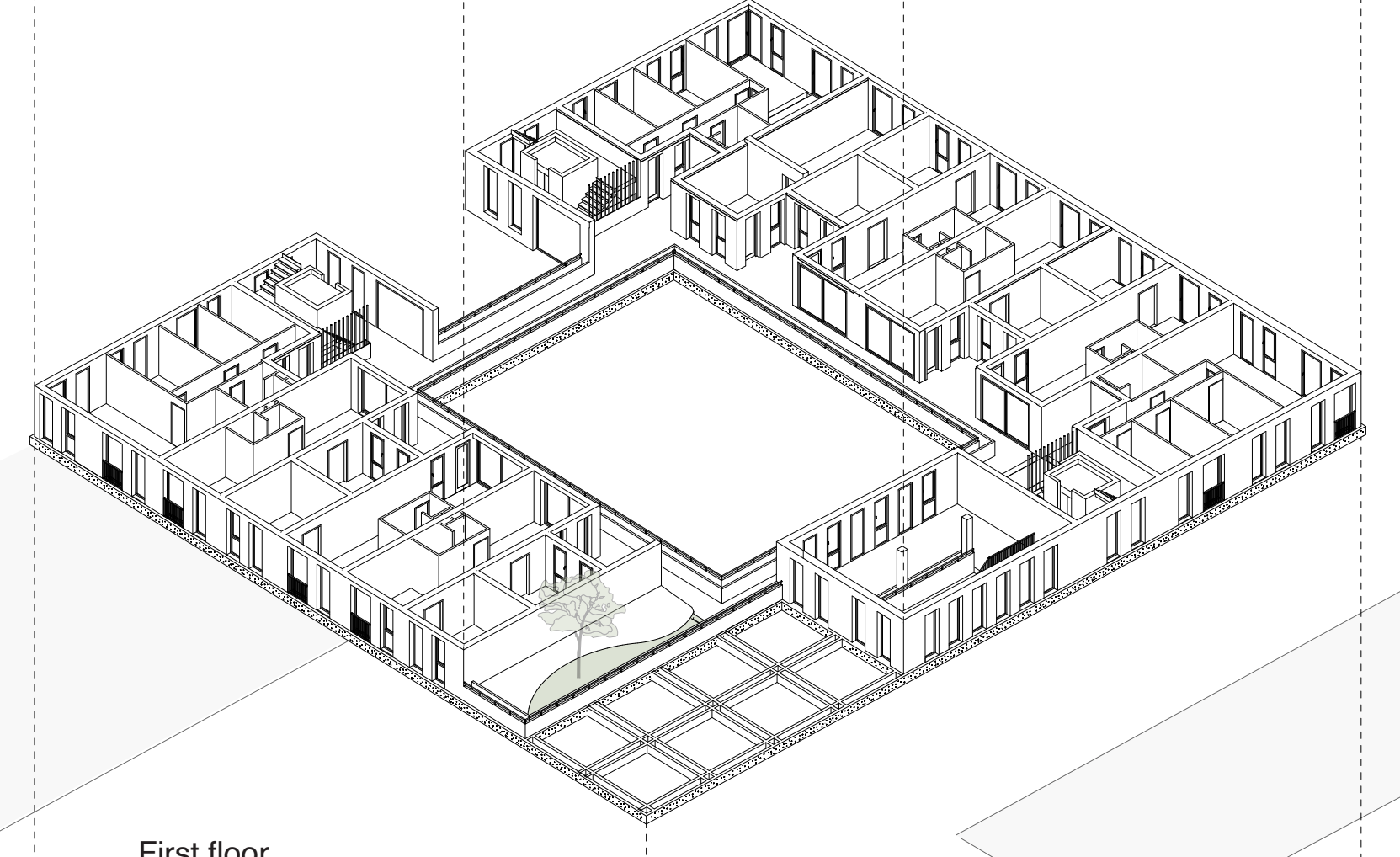
Fourth floor



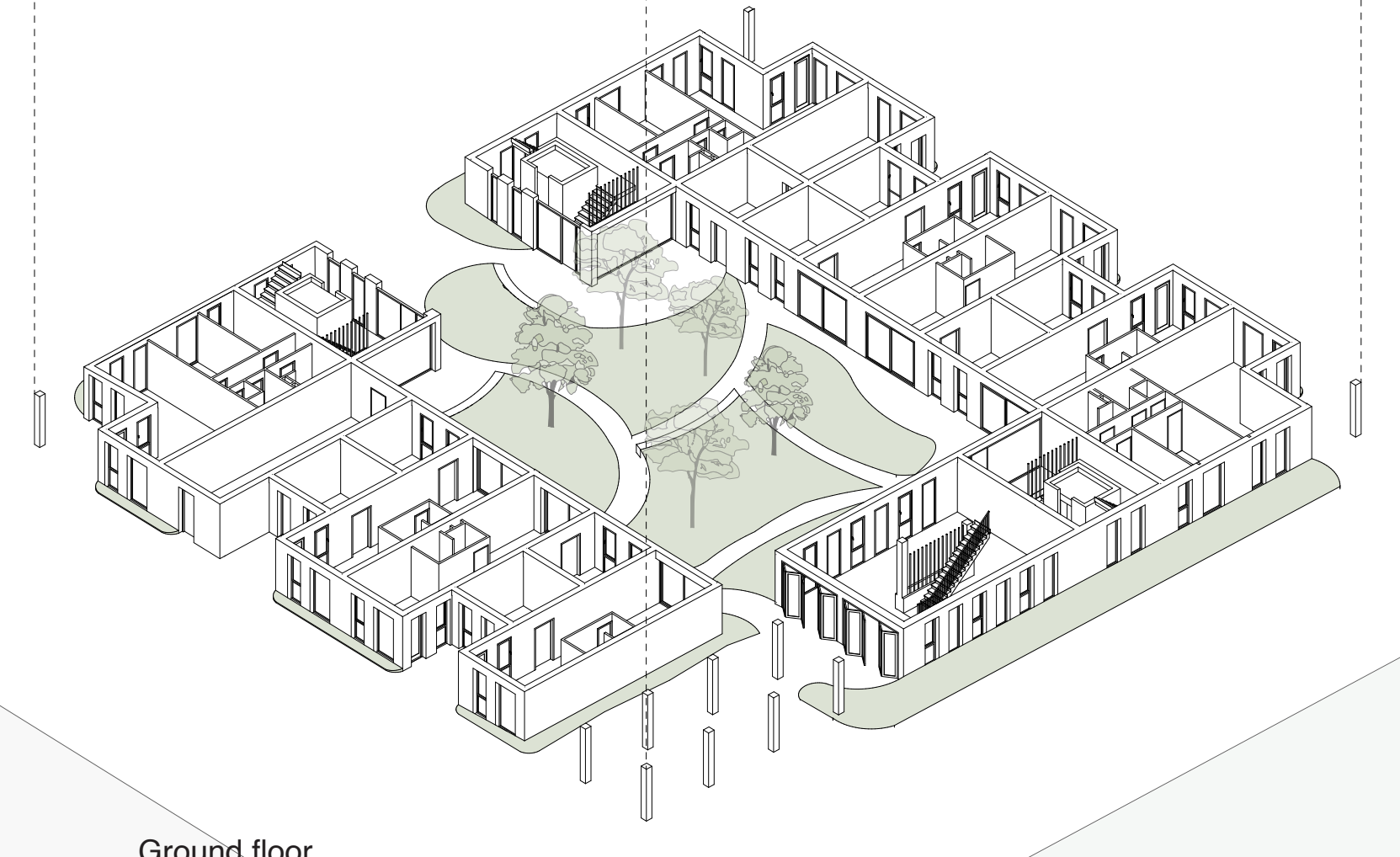
Third floor



Second floor



First floor



Ground floor

Exploded view 1:300

