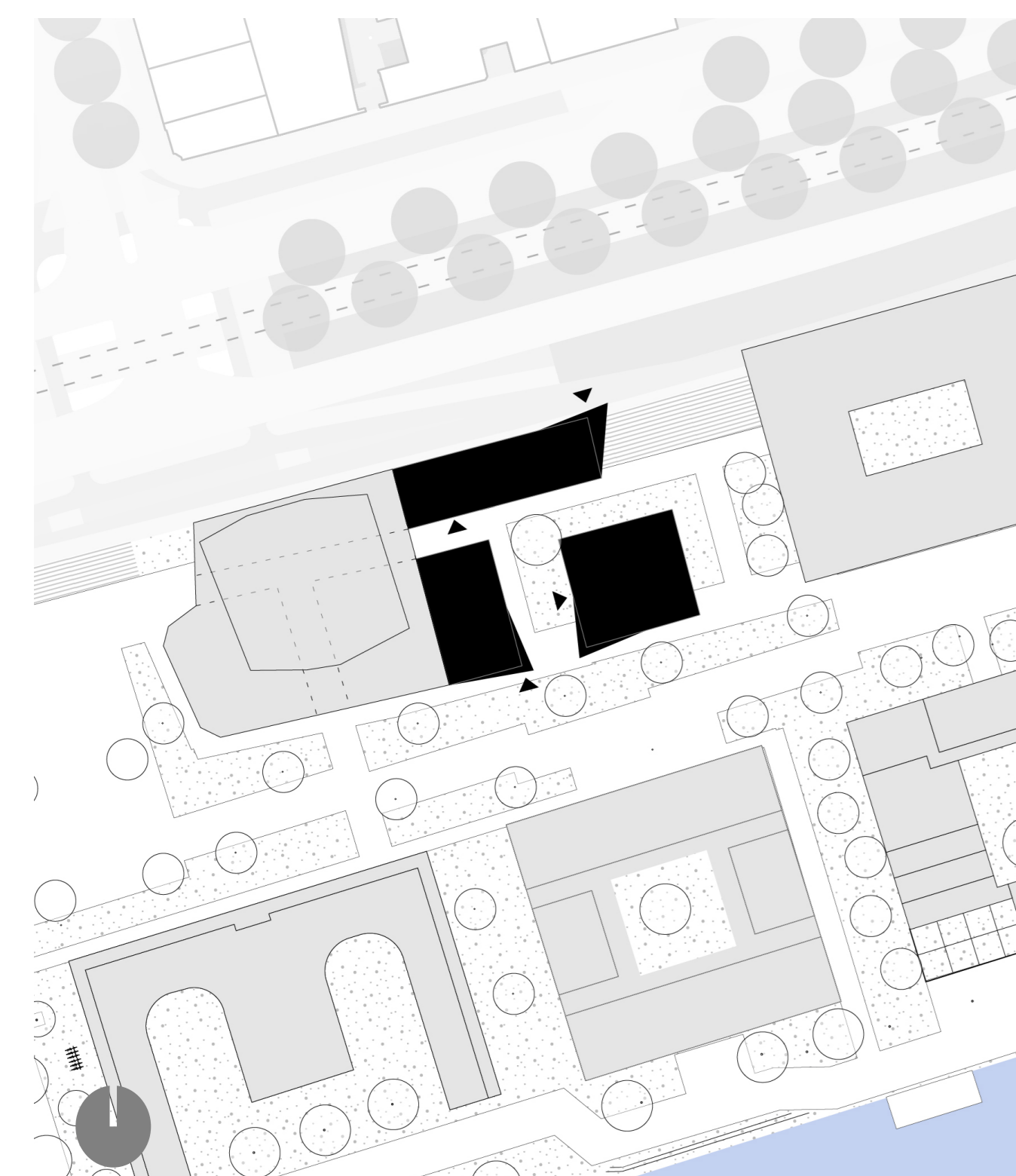


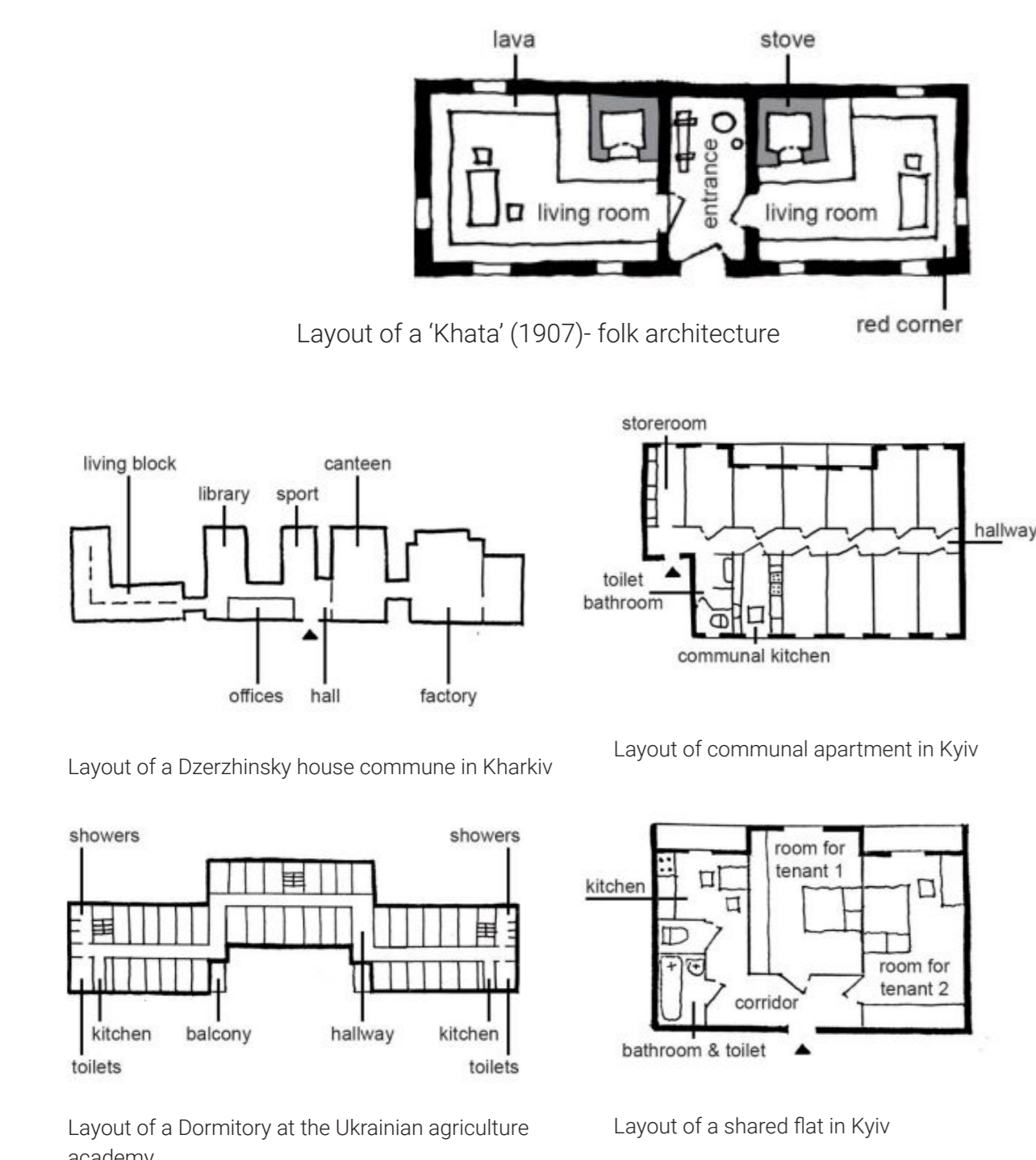
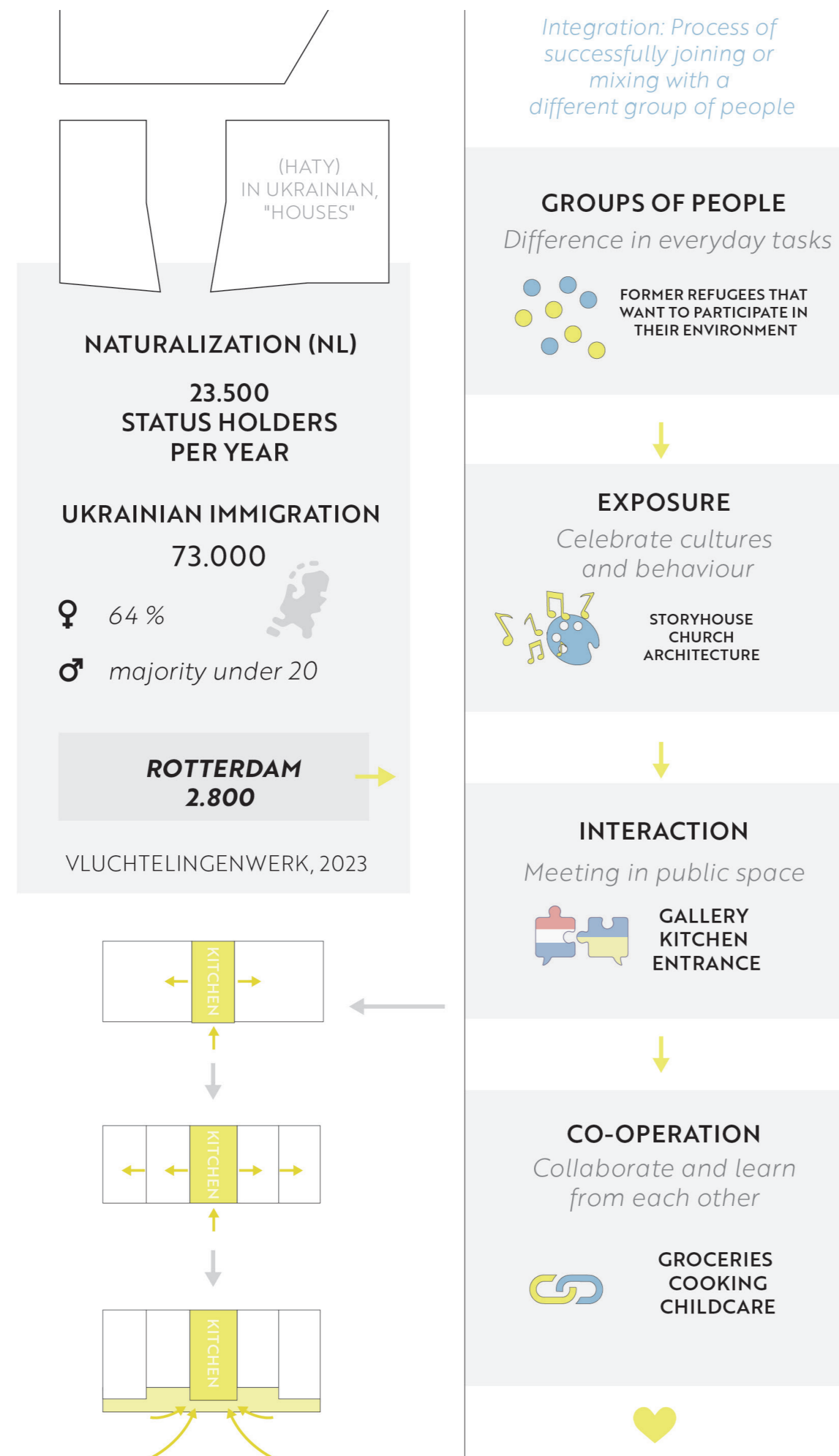
# CO\*HATY

A co-housing solution to integration •

The Building serves as a powerful catalyst for integration by intentionally bringing together people from diverse backgrounds, ages, and walks of life. By sharing common spaces, resources, and decision-making processes, residents are encouraged to interact, collaborate, and learn from one another's perspectives and experiences.

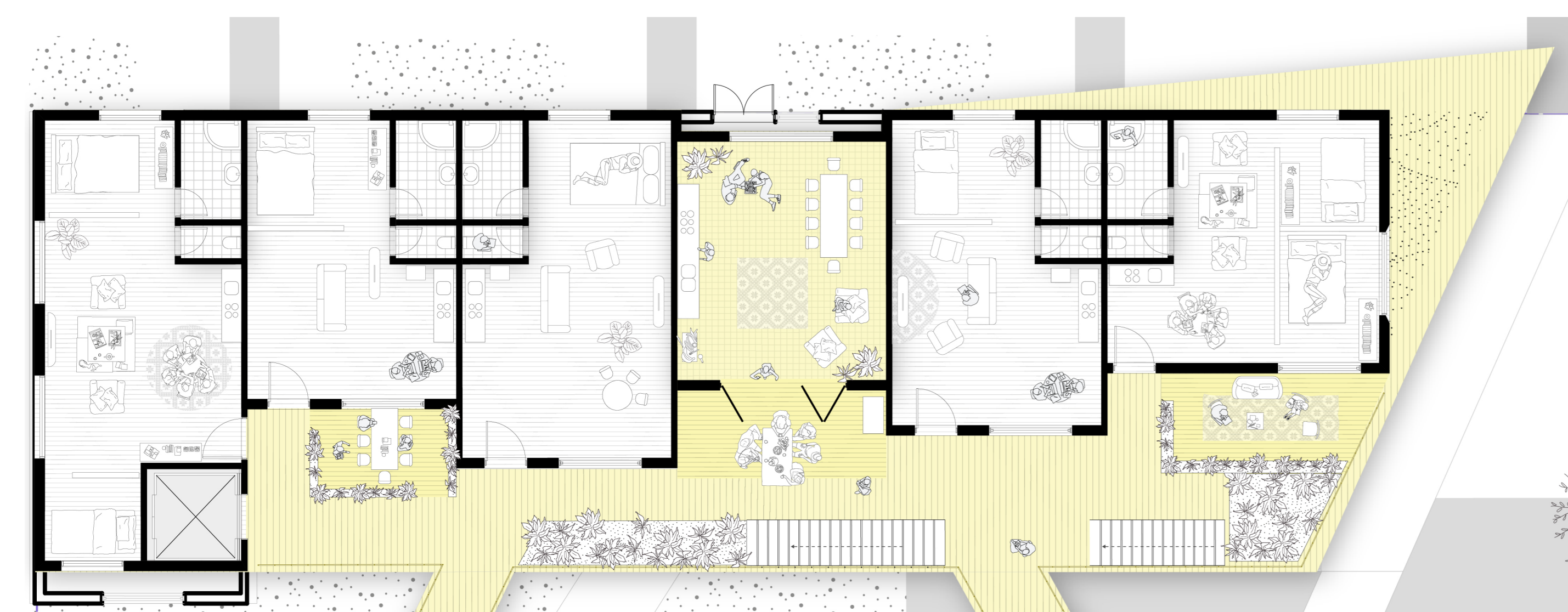


Urban Plan 1:1000

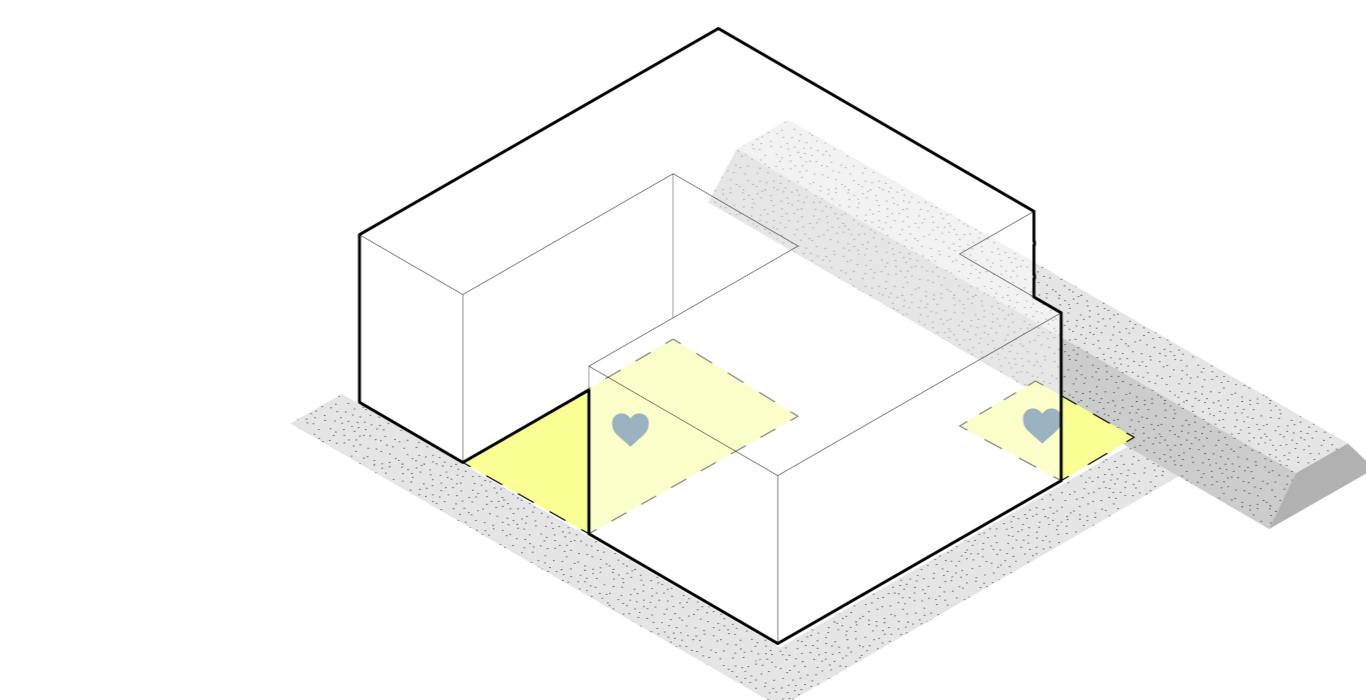
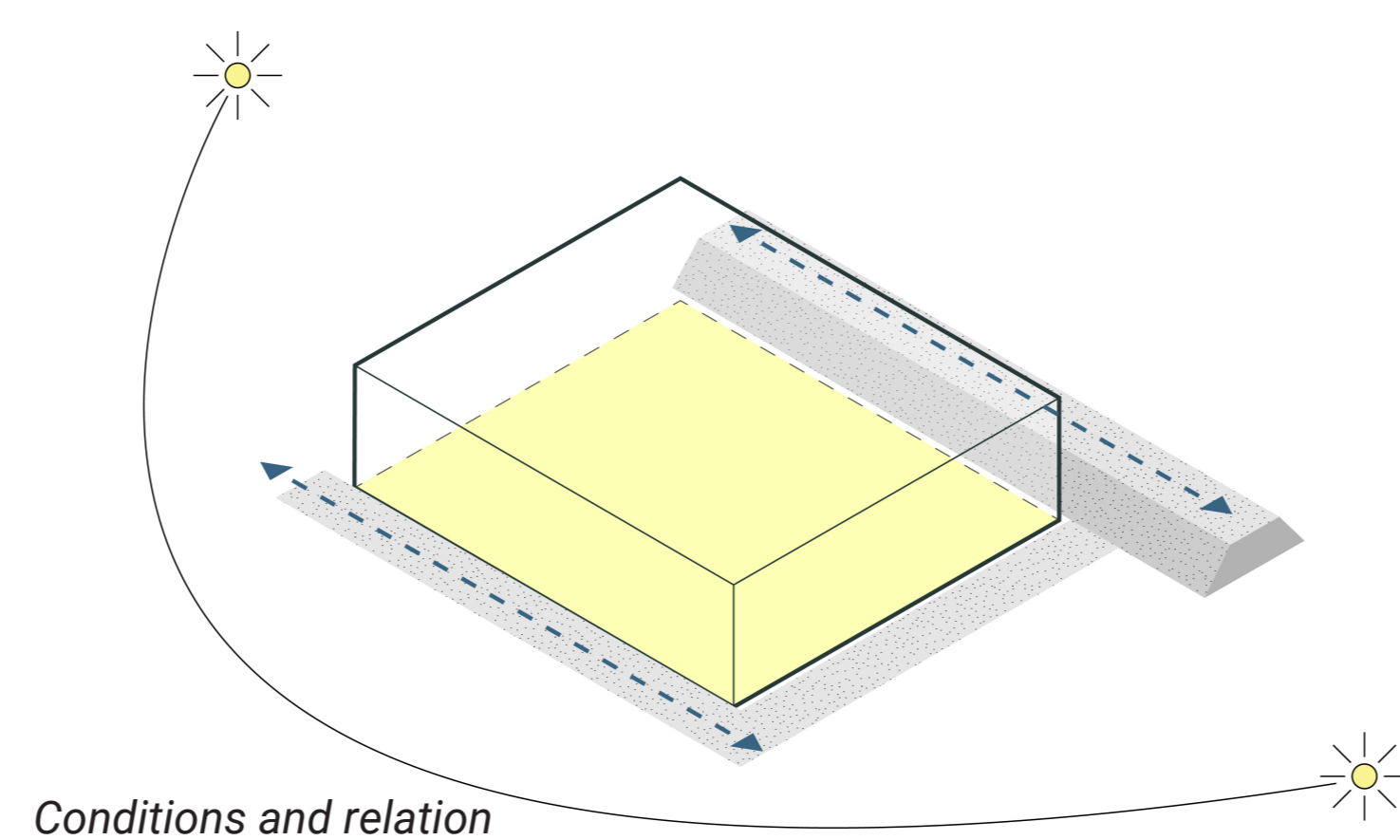


Traditional Ukrainian collective housing types

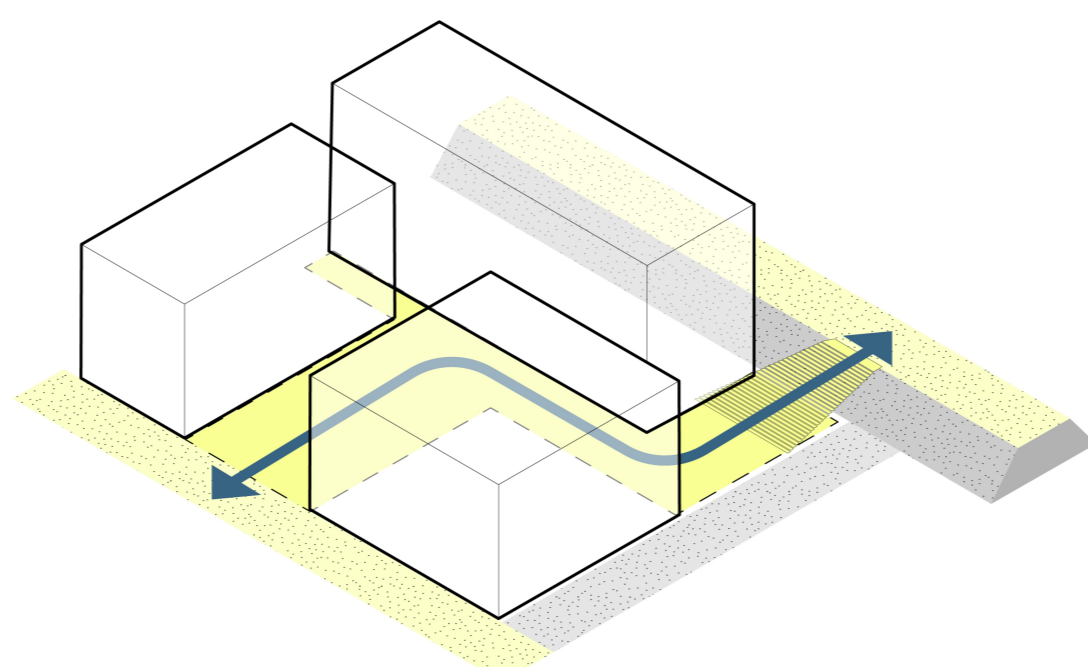
Prof. Dr. phil. habil. Christine Hannemann



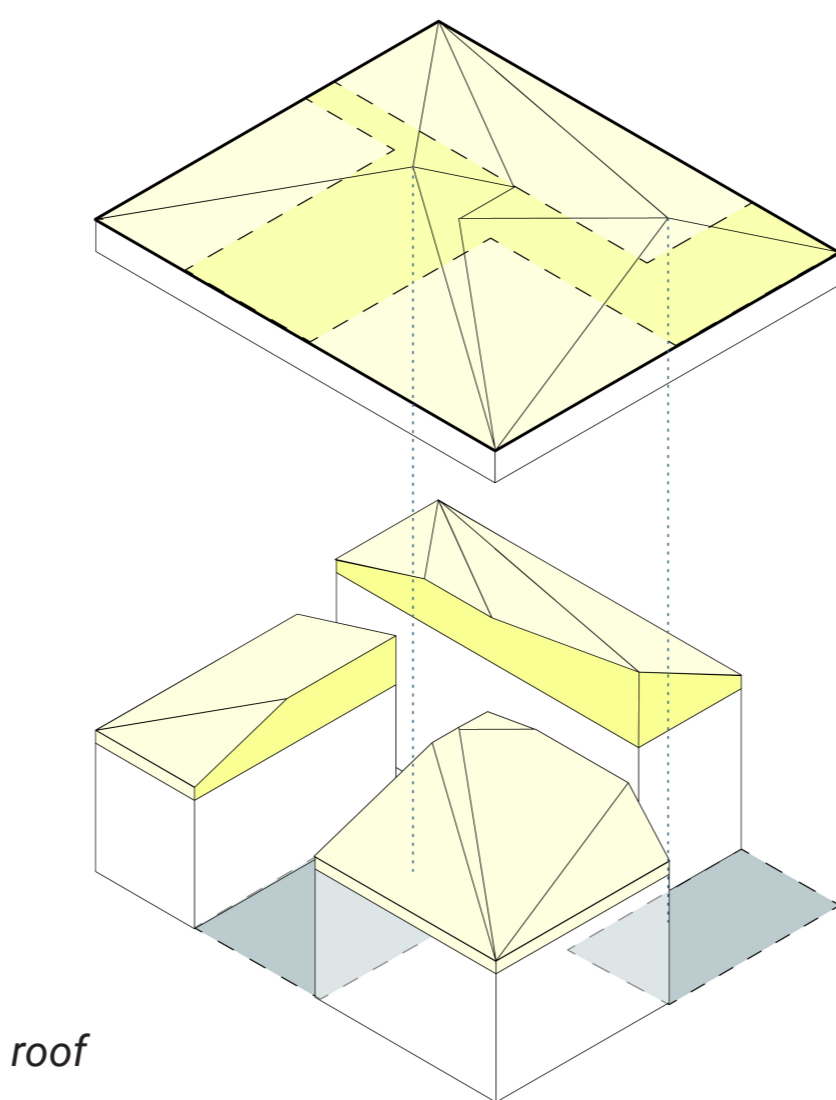
Living Typology | 1:300



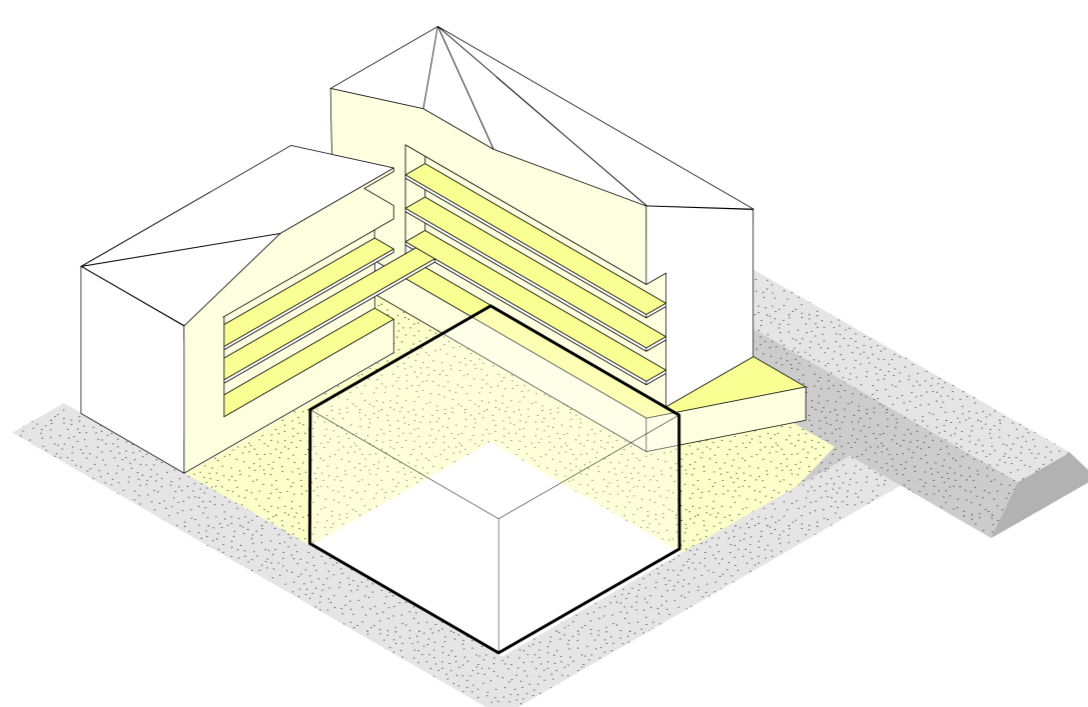
Two squares



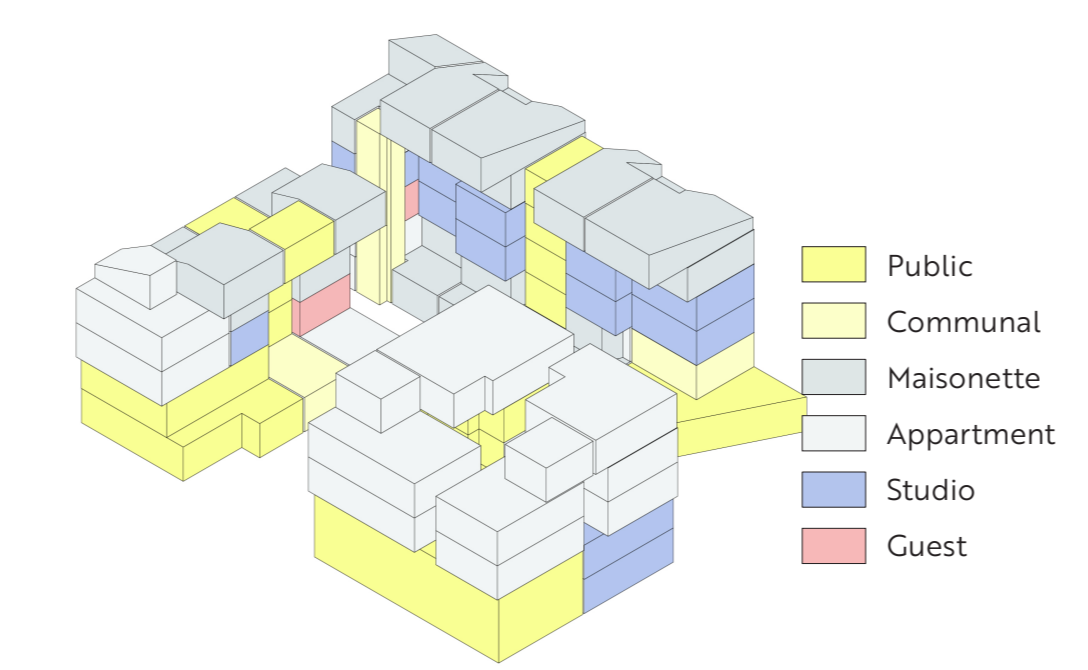
From dike to street



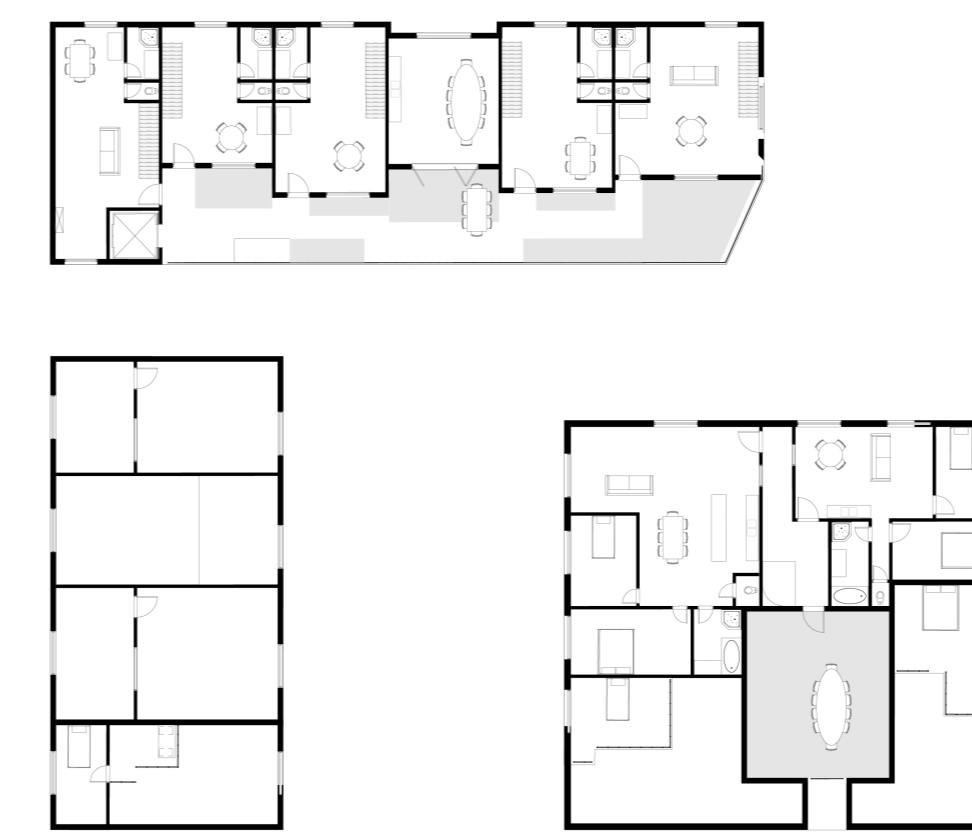
All under one roof



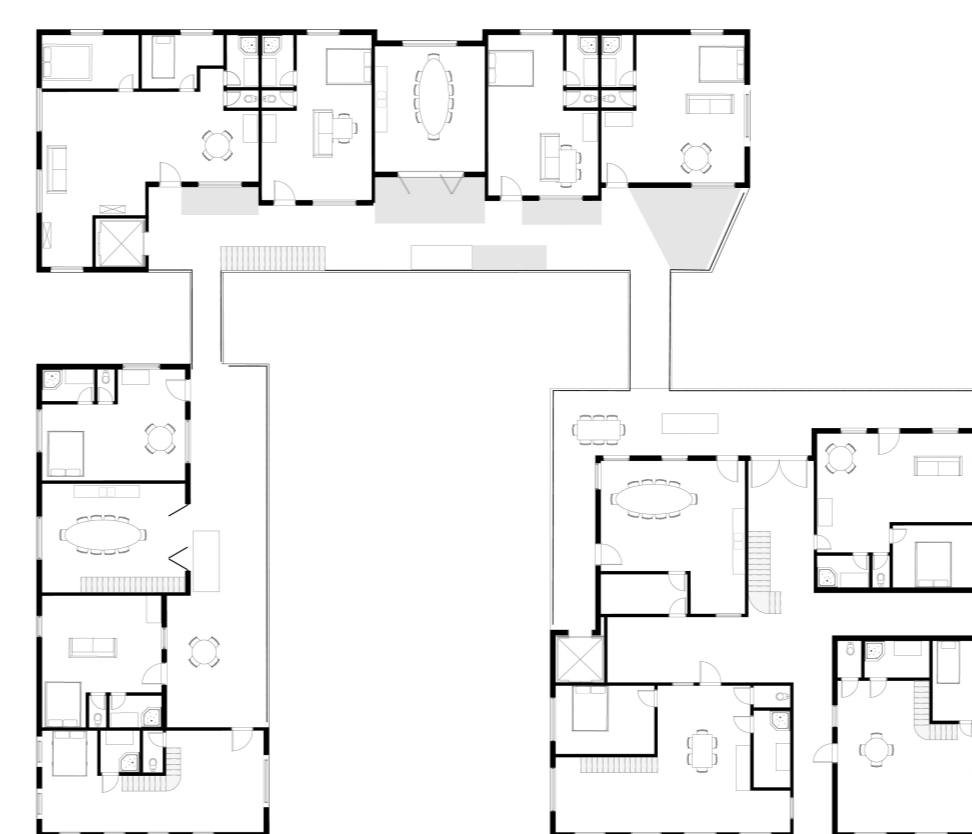
Informal inside



Functions and typologies



Fourth floor



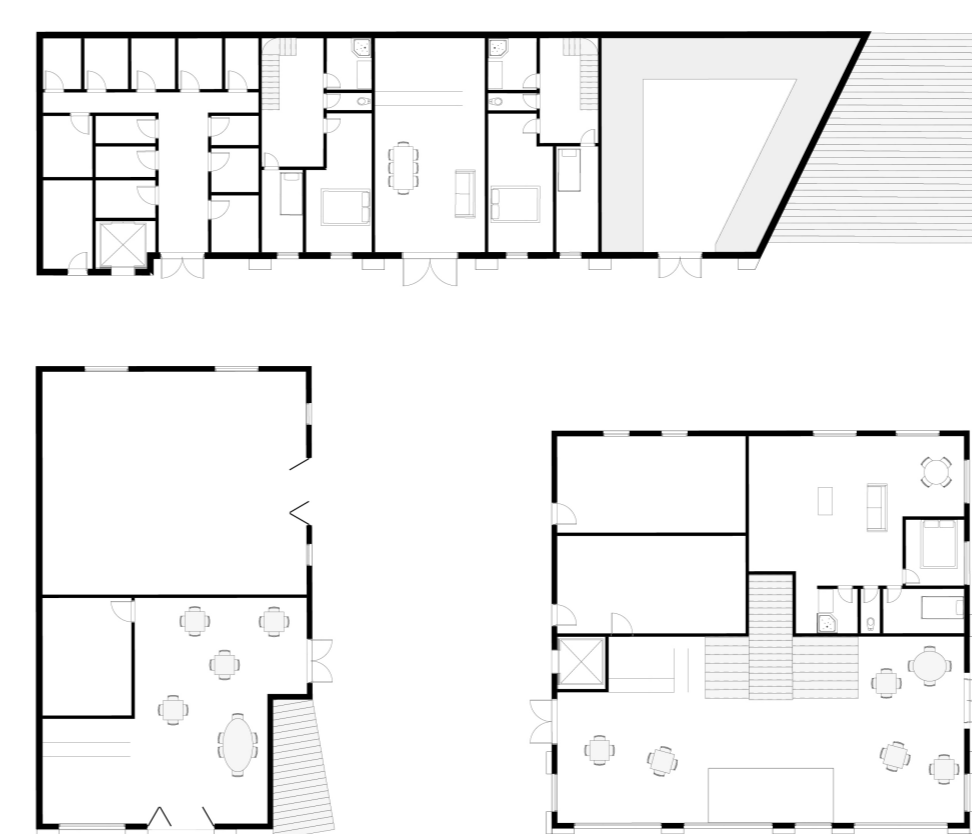
Third floor



Second floor



First floor



Ground floor

