

LEOPOLDPLATZ: A NEW START, TOGETHER

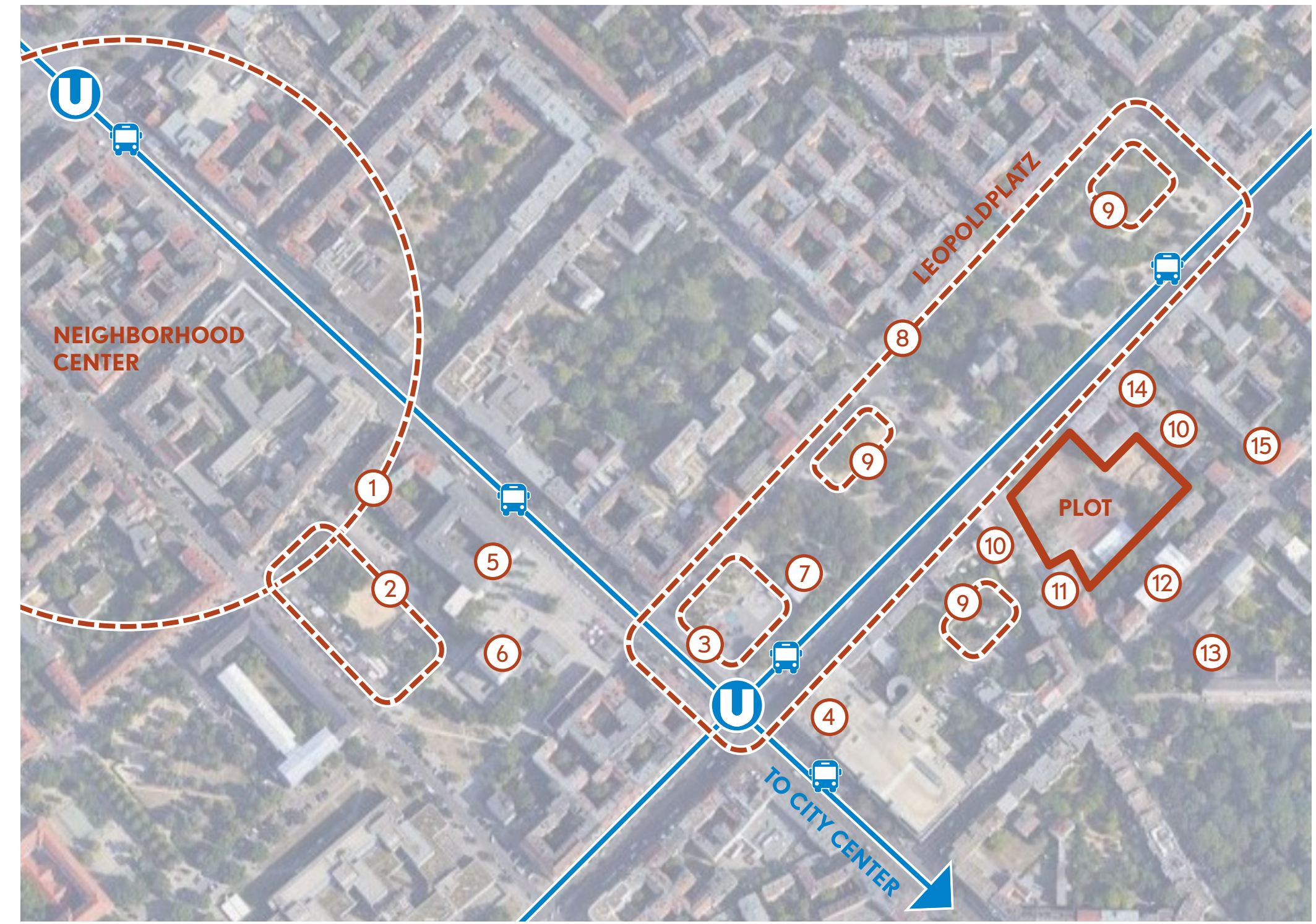
Studio: We Own The City
 Rotterdamse Academie van Bouwkunst
 15-12-2023
 Dennis Beekman



Everyone deserves to have a safe place to live, to work, to learn and to enjoy. However, for those who have lost everything, it can be hard to find this place. This holds true for both refugees arriving in Berlin and the homeless people of Wedding. Feeling part of society becomes even more challenging when one has become disconnected to it. Housing is a primary element in rebuilding one's life, yet successful integration requires more than just shelter. Social interactions play a vital role by shaping individuals into engaged members of their communities and to create a sense of belonging. Leopoldplatz offers a new start for both refugees and homeless people, utilizing the public space, a vacant church building and an empty plot. This part of the project focuses on the empty plot.

The plan consists of an ensemble of four buildings that complete the block while maintaining porosity towards the public space. A gradual transition in public spaces, collective spaces and private spaces lower the threshold for social interactions and increase opportunities for interactions, either intentionally or coincidentally. Maximizing shared use of space and amenities stimulates to meet and help each other. Within the block a green and calm courtyard is created, providing a space for residents to engage with each other and alleviate stress. While serving as a secure retreat from the hectic city life, it is open to the neighborhood, encouraging the initiation of new connections among neighbors.

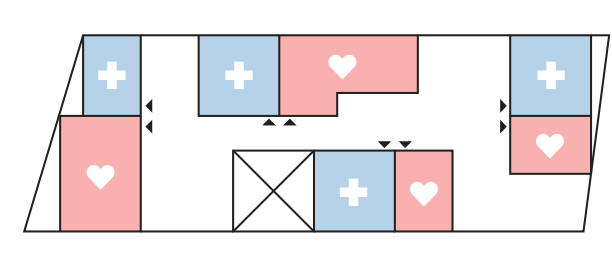
The Leopoldplatz project strives not only to provide physical shelter but to cultivate a vibrant, interconnected community where homeless and refugees can rebuild their lives and forge meaningful relationships.



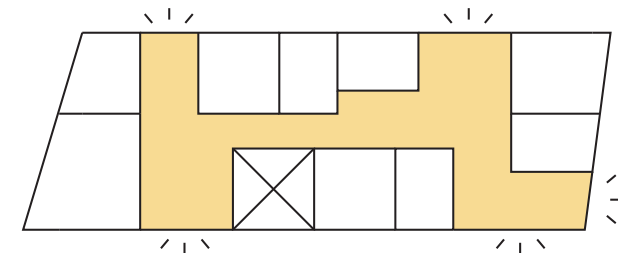
- Groceries and goods
- 1 neighborhood center
- 2 weekly food market
- 3 weekly flea market
- 4 supermarket
- Help and support
- 5 municipal office
- 6 municipal job center
- 7 vacant church building
- Recreation
- 8 park
- 9 playground
- Education
- 10 kindergarden
- 11 music school
- 12 adult education
- 13 primary school
- Care
- 14 medical center
- 15 dentist

- Location assets**
- The location is well embedded in the neighborhood
 - Amenities and public transport are within walking distance
 - Leopoldplatz is a natural point of social interactions

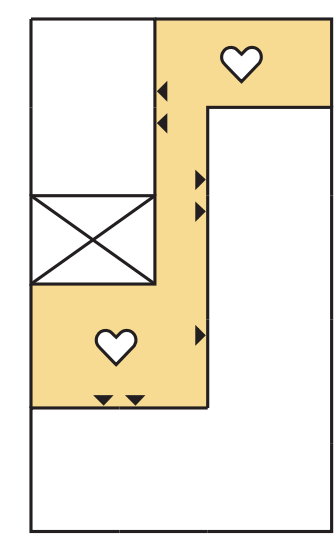
Key elements



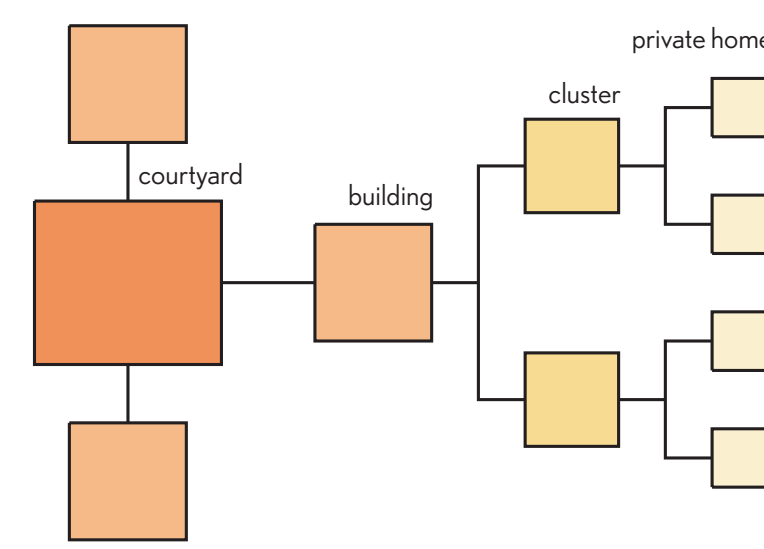
- Supporting household**
- Housing First principle
 - newcomers connected to buddies



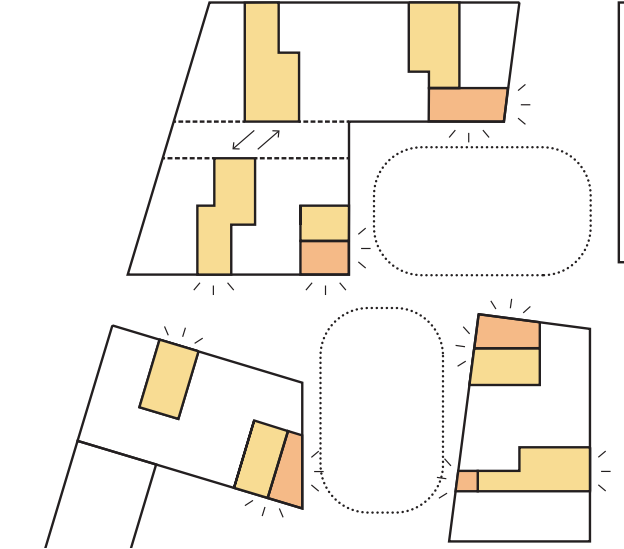
- Combined household:**
- private space reduced to the essential
 - maximum collective space for sharing



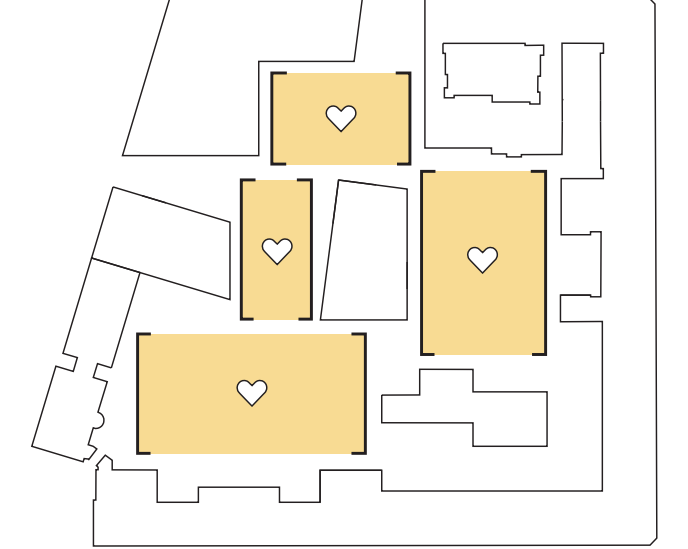
Traffic space = meeting space



- Cascading steps of collectivity:**
- lowering the threshold for social interactions
 - increasing opportunities for coincidental interactions



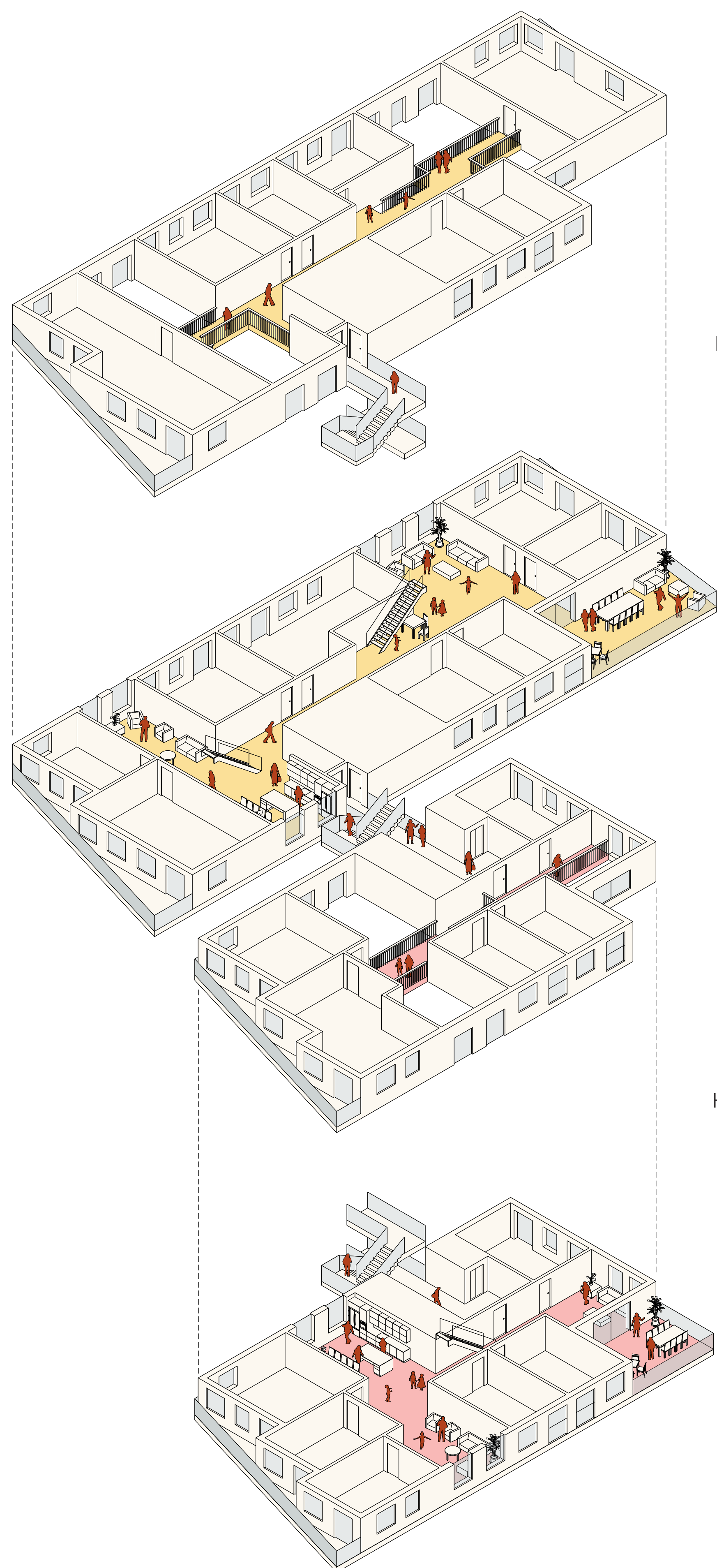
- Familiar faces**
- communal spaces oriented onto central courtyard



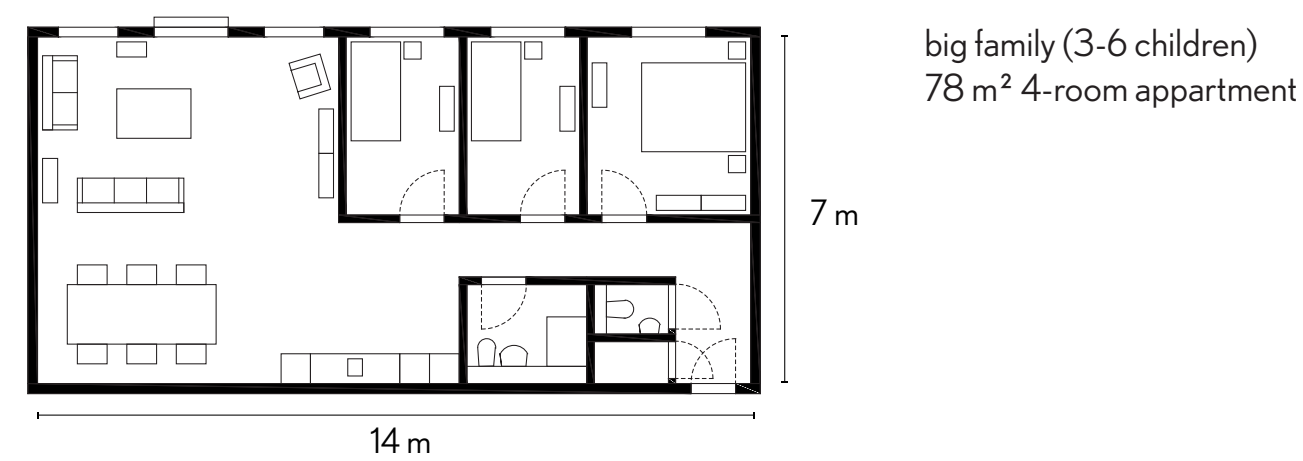
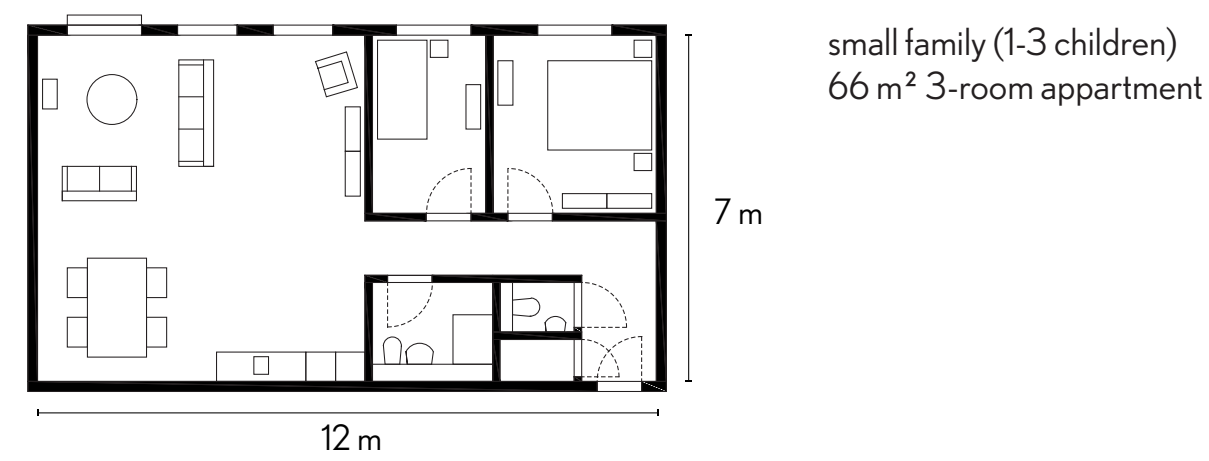
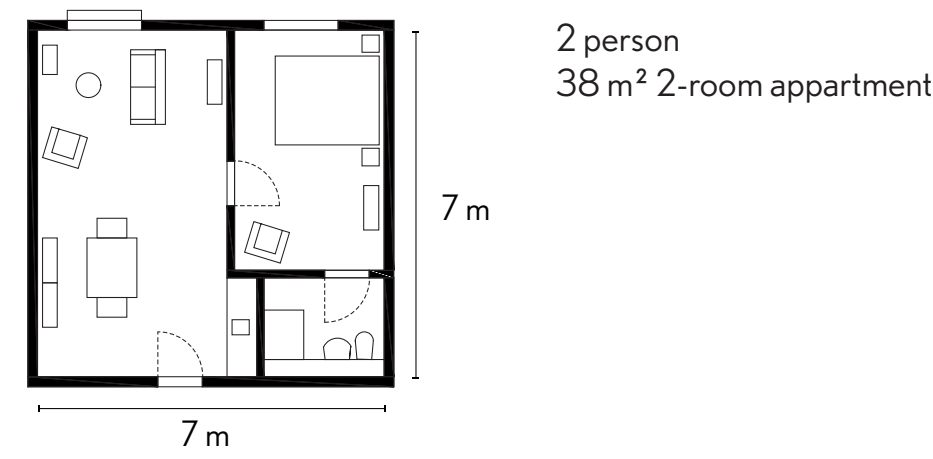
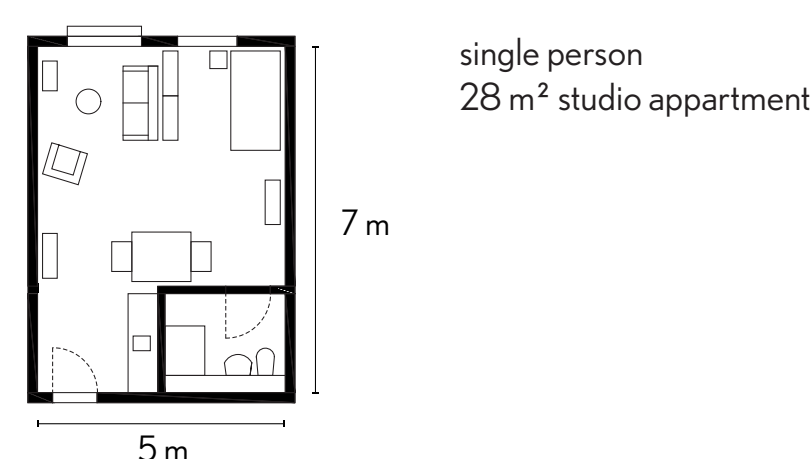
- Feeling secure**
- dividing the courtyard into intimate spaces for mixed use

Concept

Combined household cluster



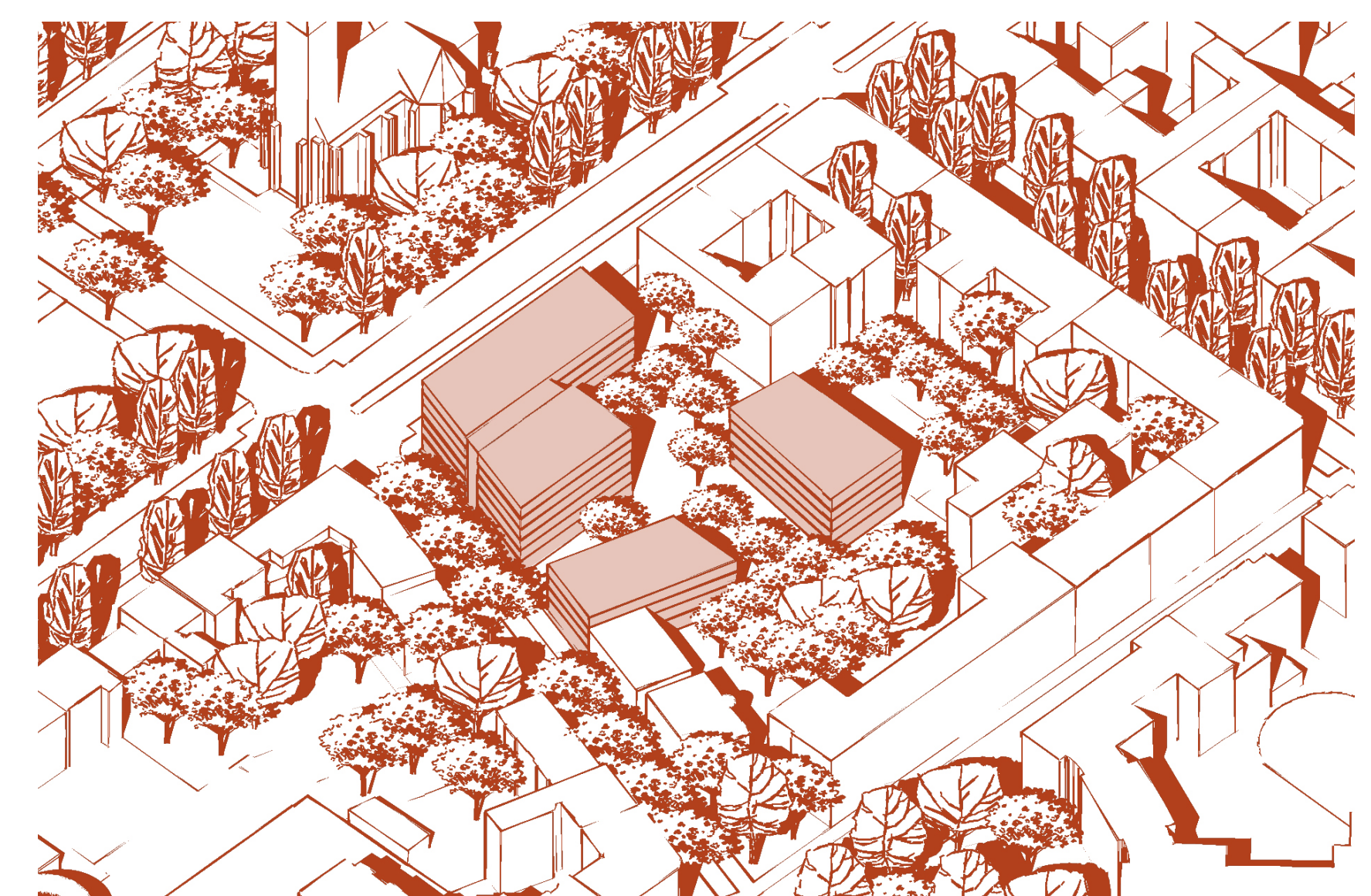
Private homes: variable units



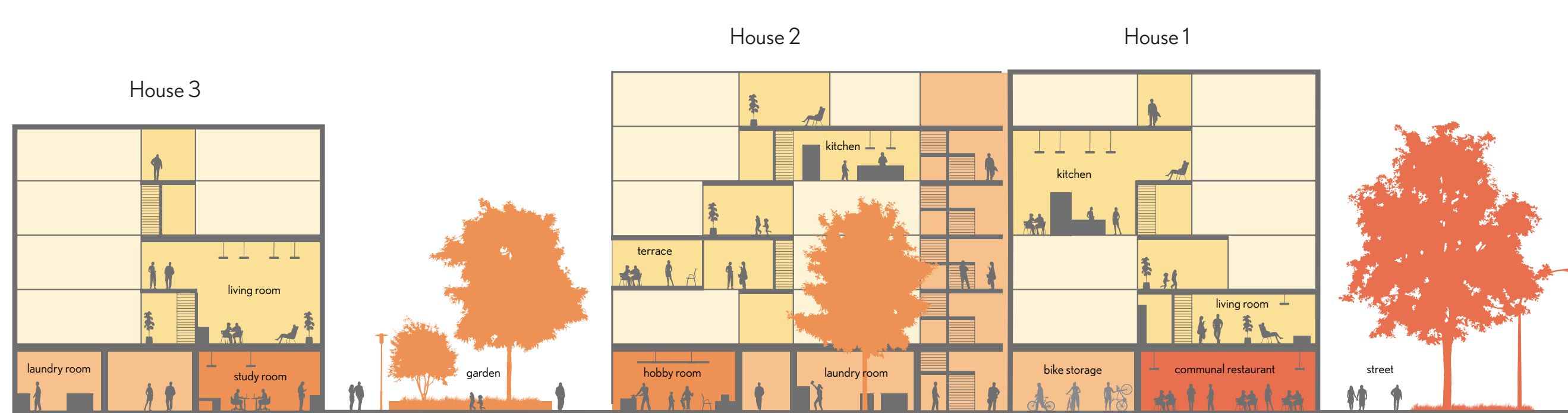
Communal living



Urban setting



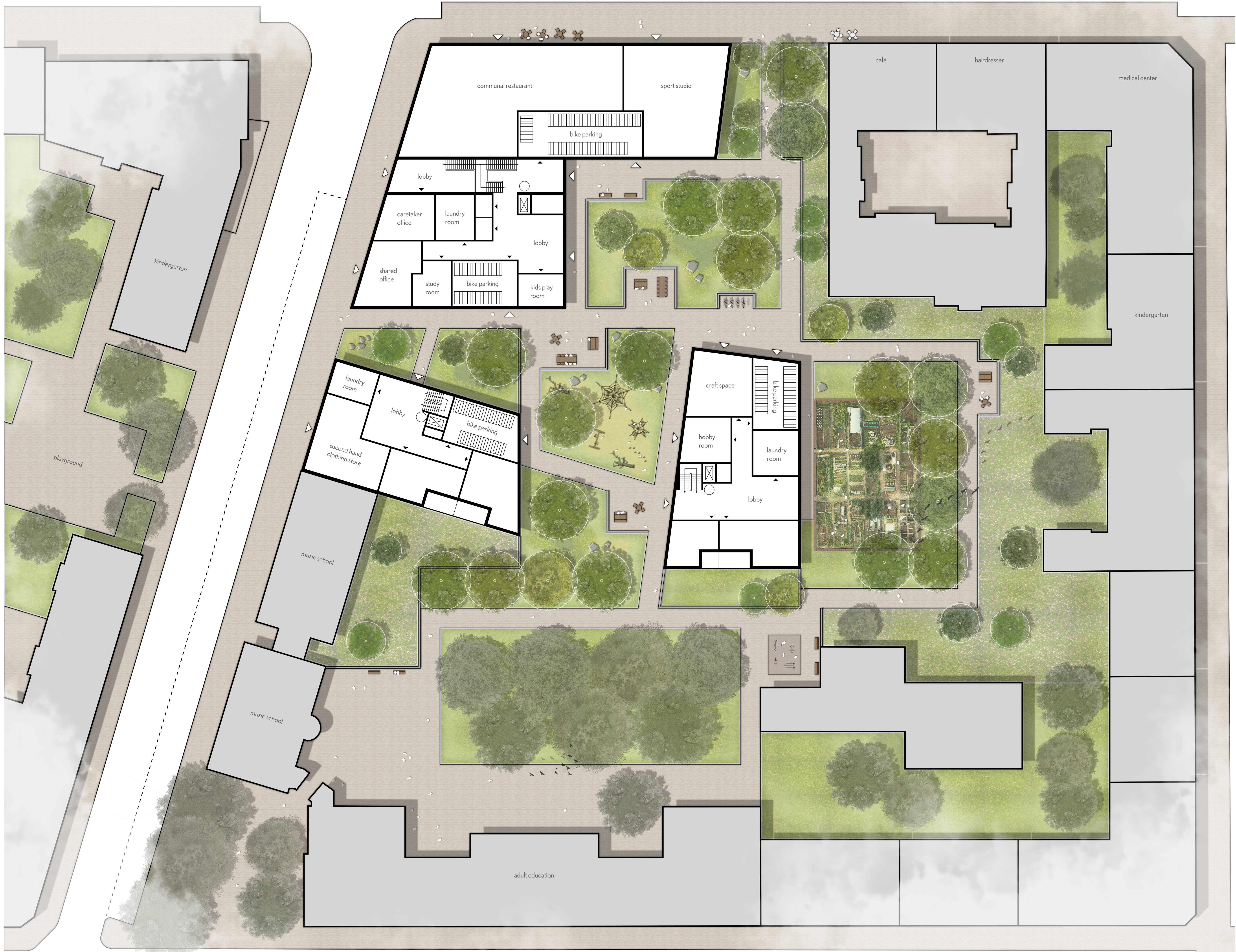
Gradient of collectivity





M²
 GROSS FLOOR AREA:
 (communal) living 10.100 m²
 collective spaces 950 m²
 externally rentable 840 m²
 approx. 130 households

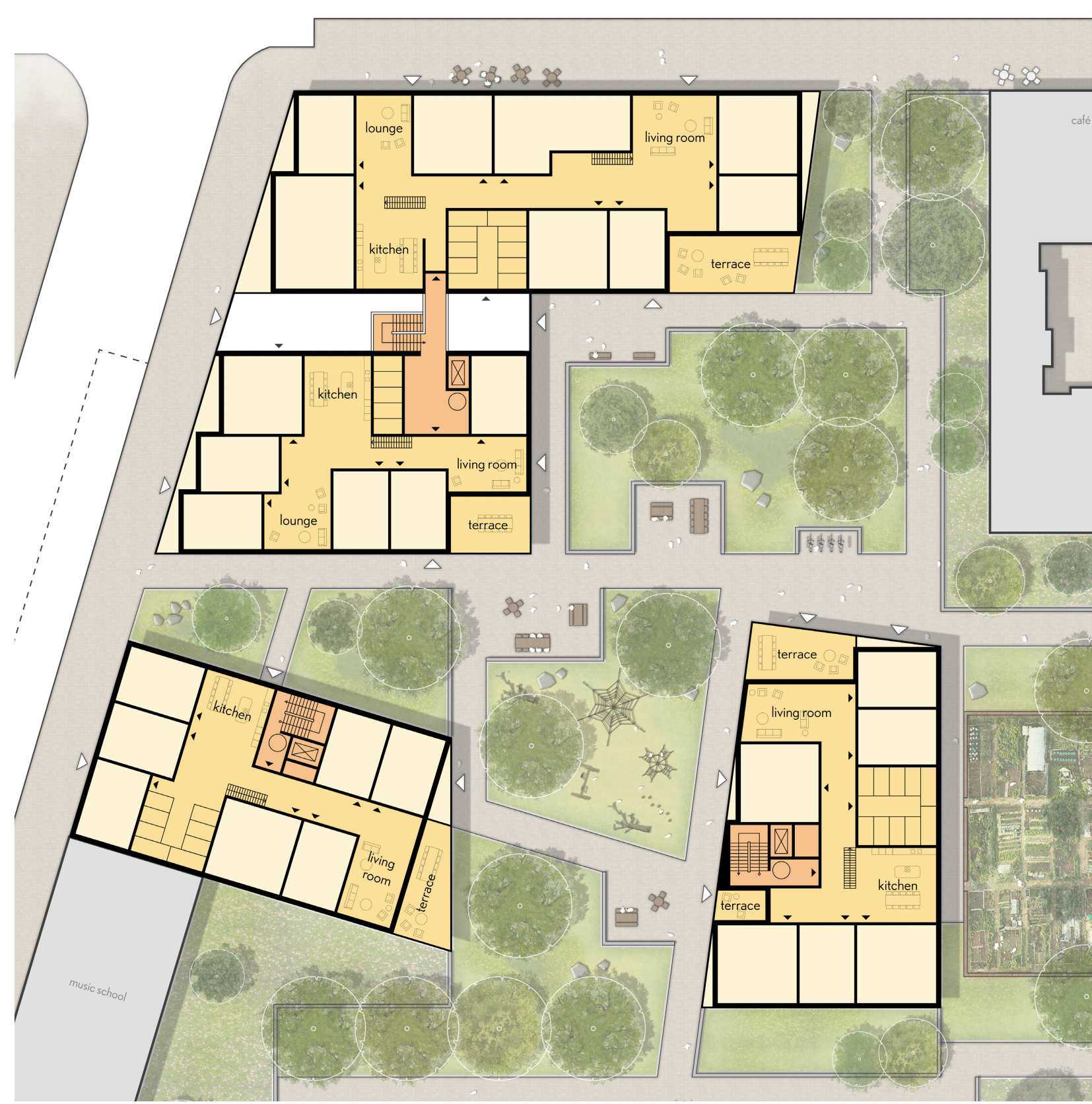
Courtyard



Urban plan



Ground floor



Floor 1



Floor 2