

SKALA

LOCATION



LOCATION



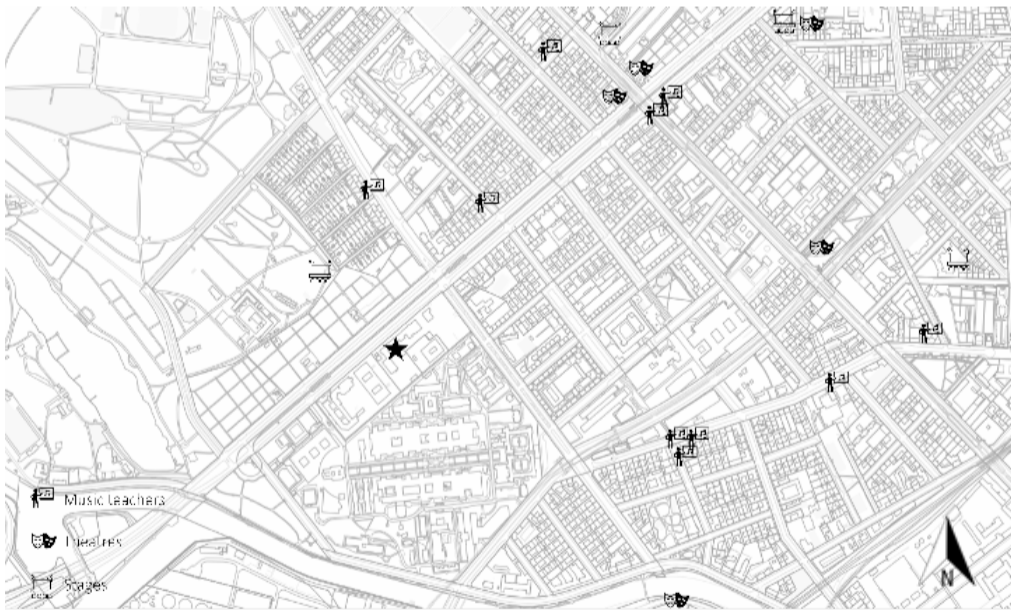
PROGRAM REQUIREMENTS



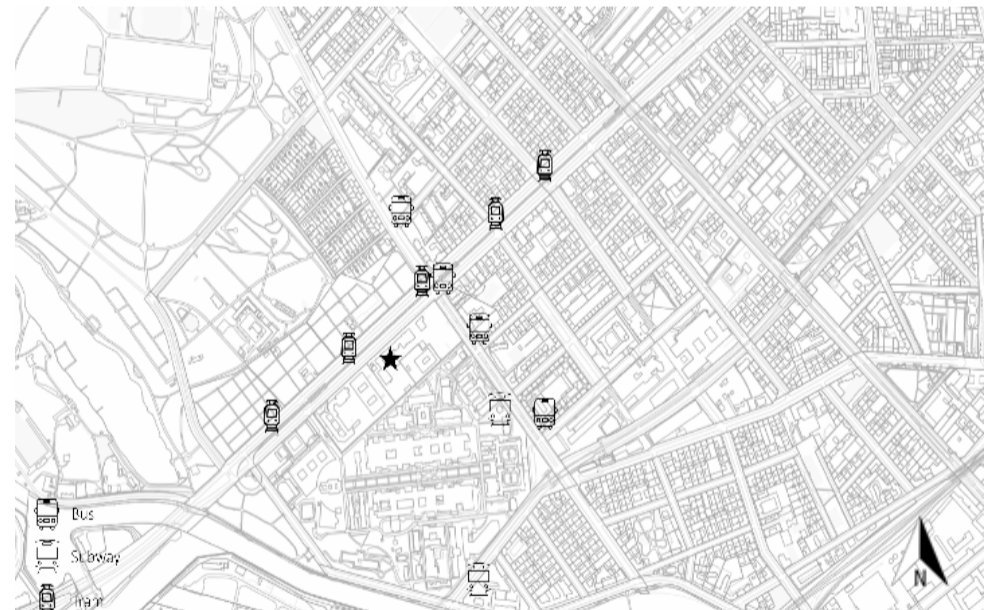
CORE VALUES



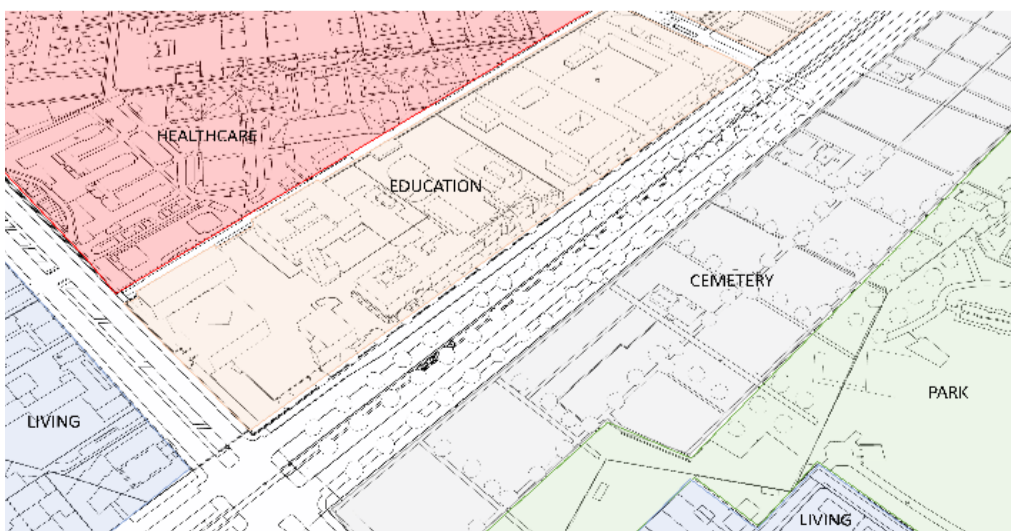
ANALYSIS



ANALYSIS



FUNCTIONS



FLOW



VISUALISATION



OVERVIEW



BIG STAGE

1



OVERVIEW



INTIMATE STAGES

2



MIDDLE STAGE

3



RESTAURANT - SHOP

4



BIG STAGE

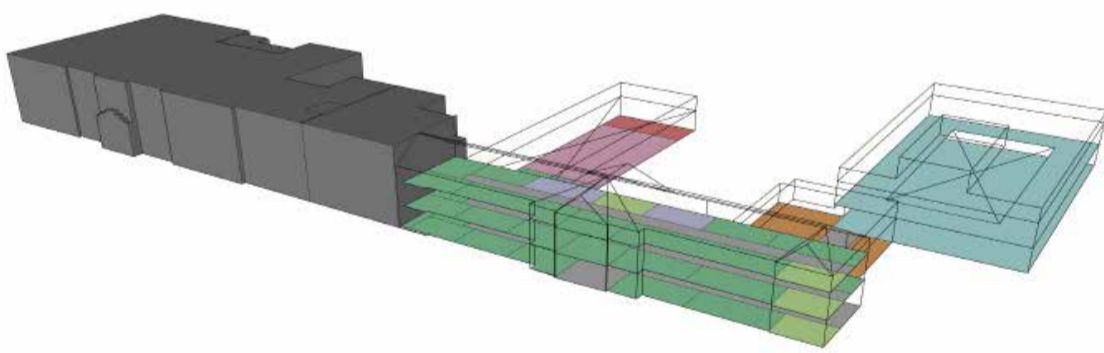
5



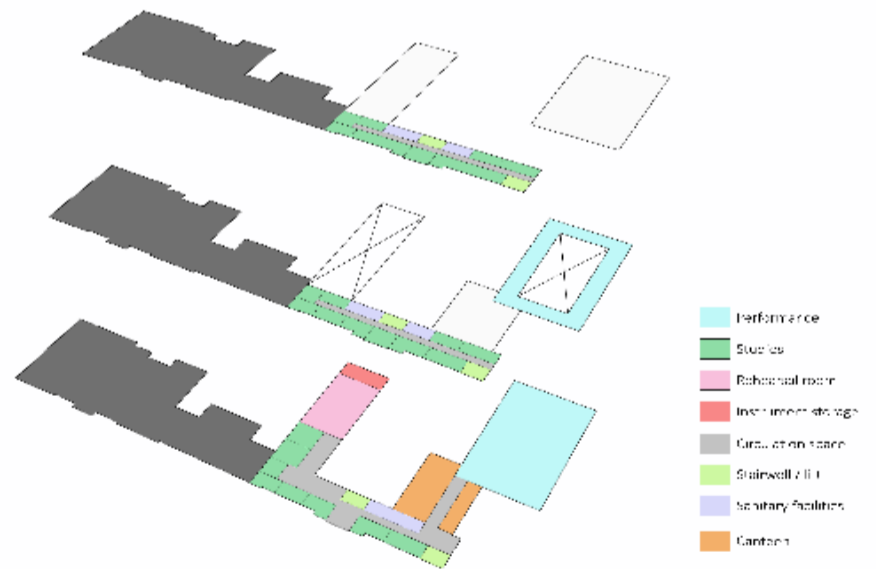
ROOFTOP STAGE

6

REHEARSAL HOUSE



FLOOR PLANS



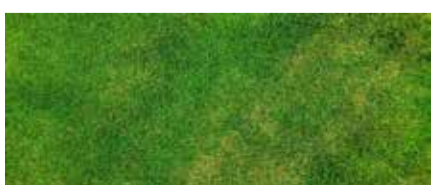
MATERIALISATION



WOOD

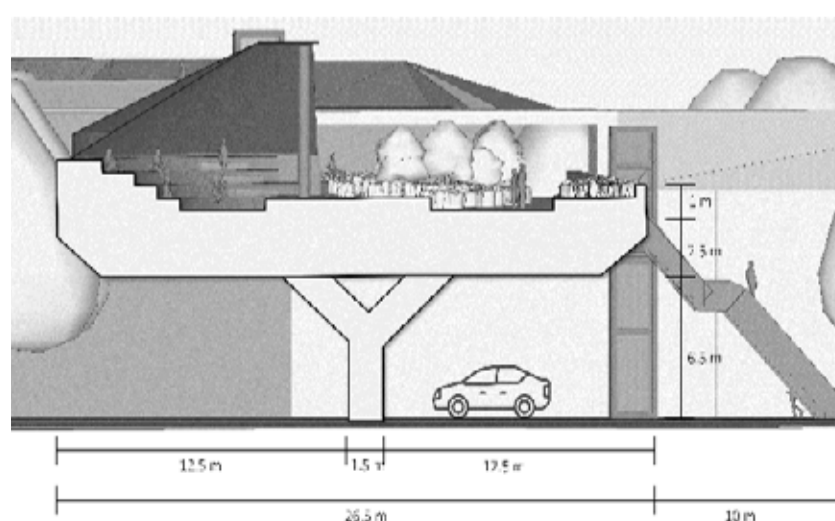


CONCRETE



GREEN

SECTION



FINANCE

In the culture budget of Berlin for 2024 you will find the following:
 "The city of Berlin's culture budget (population 7m) for 2024 has been set at €947m"

The project will become a development of the municipality. The musicians will become part of the musicians community and they will pay contribution which will pay towards the maintenance of the Skala skybridge and the communal rehearsal house.

DAY-NIGHT & SUMMER-WINTER

As seen, the bridge is open to the public, which may attract people you don't want. To prevent abuse of the skybridge, there will be a time the stages will be closed at. The time the stages close depends on the time of the year. In the summer the stages will be open for a longer period of time than the winter. Above the stages are canopies that can be removed in the summer and placed in the winter. These canopies provide shelter for the audience and musicians.