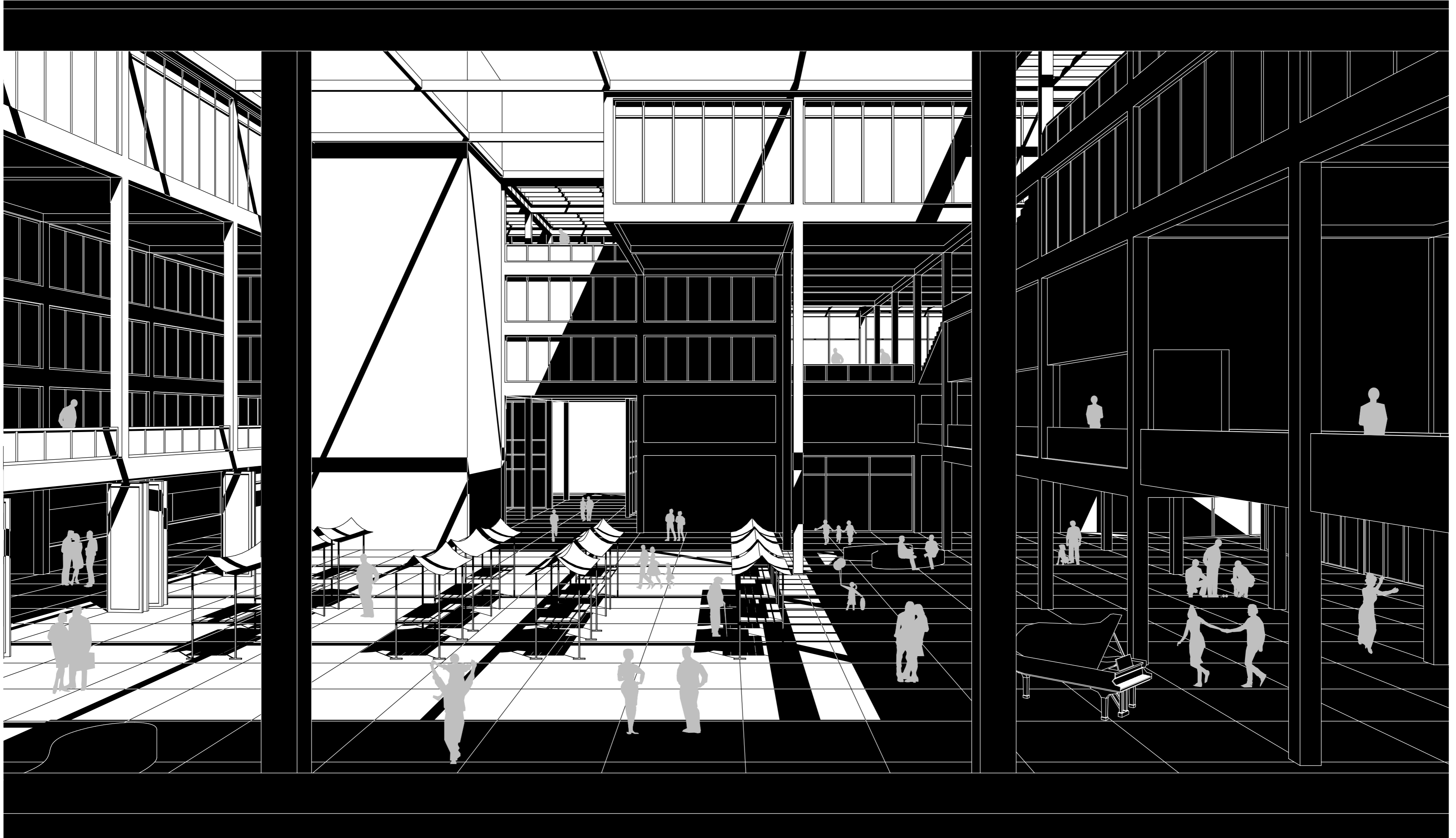
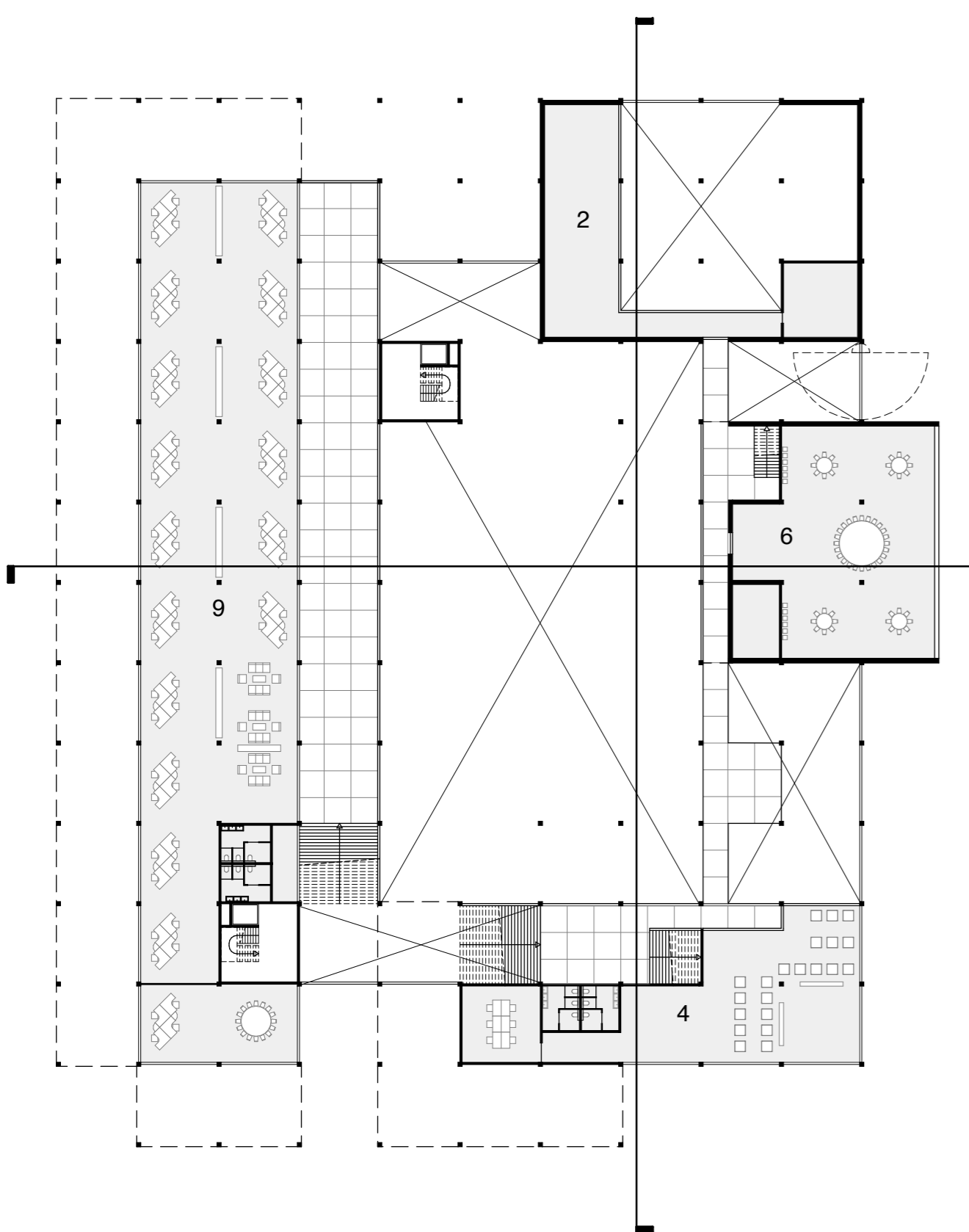


TOWN HALL RITUALS



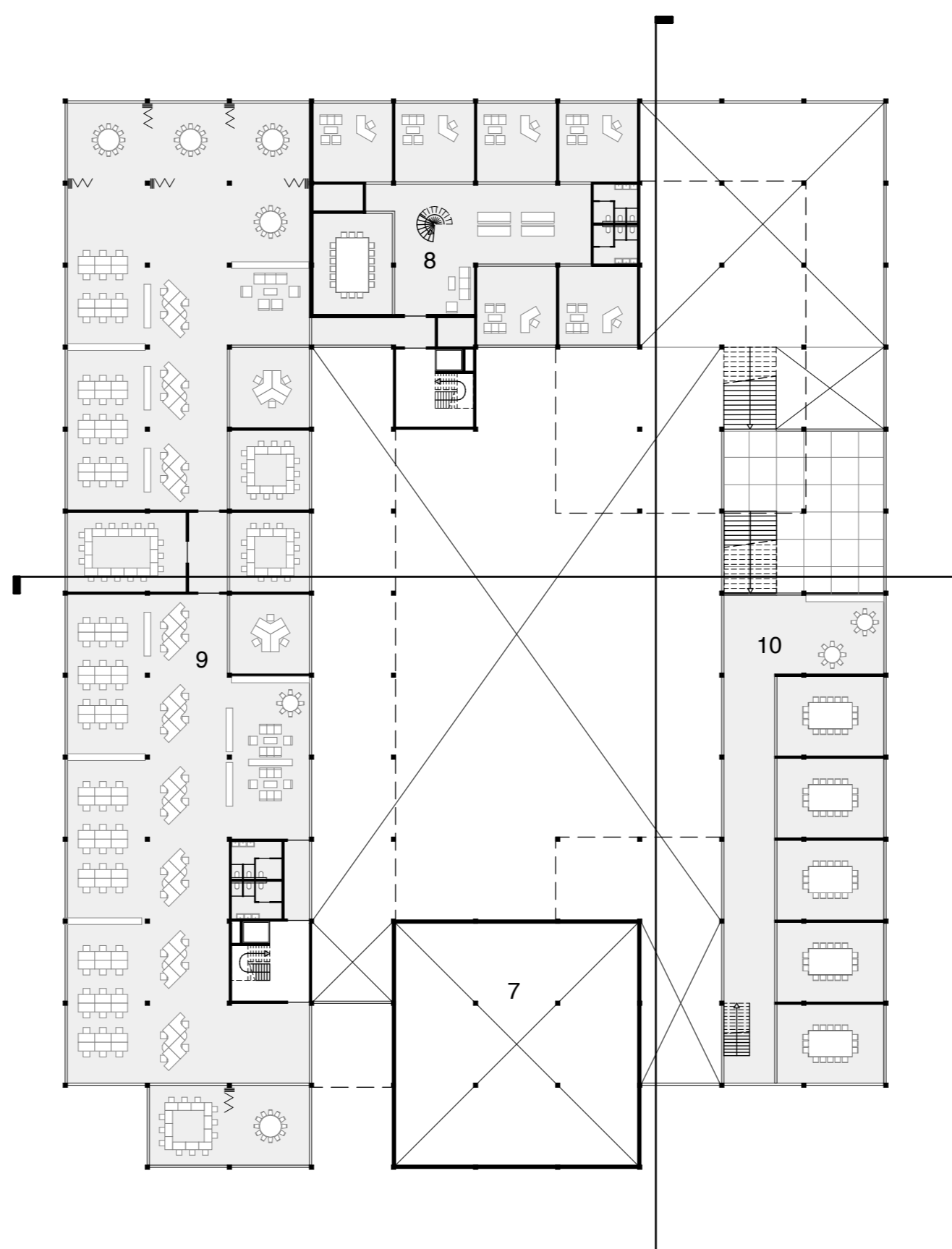
A PUBLIC SPACE, A SOCIAL SPACE, A FLEXIBLE SPACE, A DEMOCRATIC SPACE.

- THE TOWN HALL FUNCTIONS AS A COMMUNITY CLUBHOUSE, ENCOURAGING CITIZENS TO ACTIVELY PARTICIPATE IN DEMOCRACY
- SERVING AS A SPACE FOR CELEBRATION, PROTEST, CULTURE, SPORT, LEARNING AND COMMUNITY ENGAGEMENT.
- THE BUILDING SYMBOLISES TRUST, EVIDENT AS VISITORS FREELY ENTER THE BUILDING WITHOUT ENCOUNTERING SECURITY.
- THE ATRIUM SERVES AS A DYNAMIC CITY SQUARE AND CAN HOST VARIOUS PUBLIC AND SOCIAL GATHERINGS.
- THERE ARE NO BARRIERS FROM FLOOR TO FLOOR.
- THE BUILDING'S DESIGN FACILITATES MULTI-USE SPACES, ALLOWING FOR DIFFERENT PURPOSES AT DIFFERENT TIMES.
- THE ORGANISED VOLUMES CREATE GENEROUS NEGATIVE SPACE, PROVIDING PUBLIC AREAS ON ALL LEVELS WITH DIVERSE FEATURES FOR DIFFERENT ACTIVITIES.
- THE NEW TOWN HALL INTRODUCES DELIBERATIVE DEMOCRACY THROUGH CITIZEN ASSEMBLIES, FOCUSED ON DIALOGUE, DIVERSE VIEWPOINTS, AND FINDING COMMON GROUND AND SOLUTIONS.



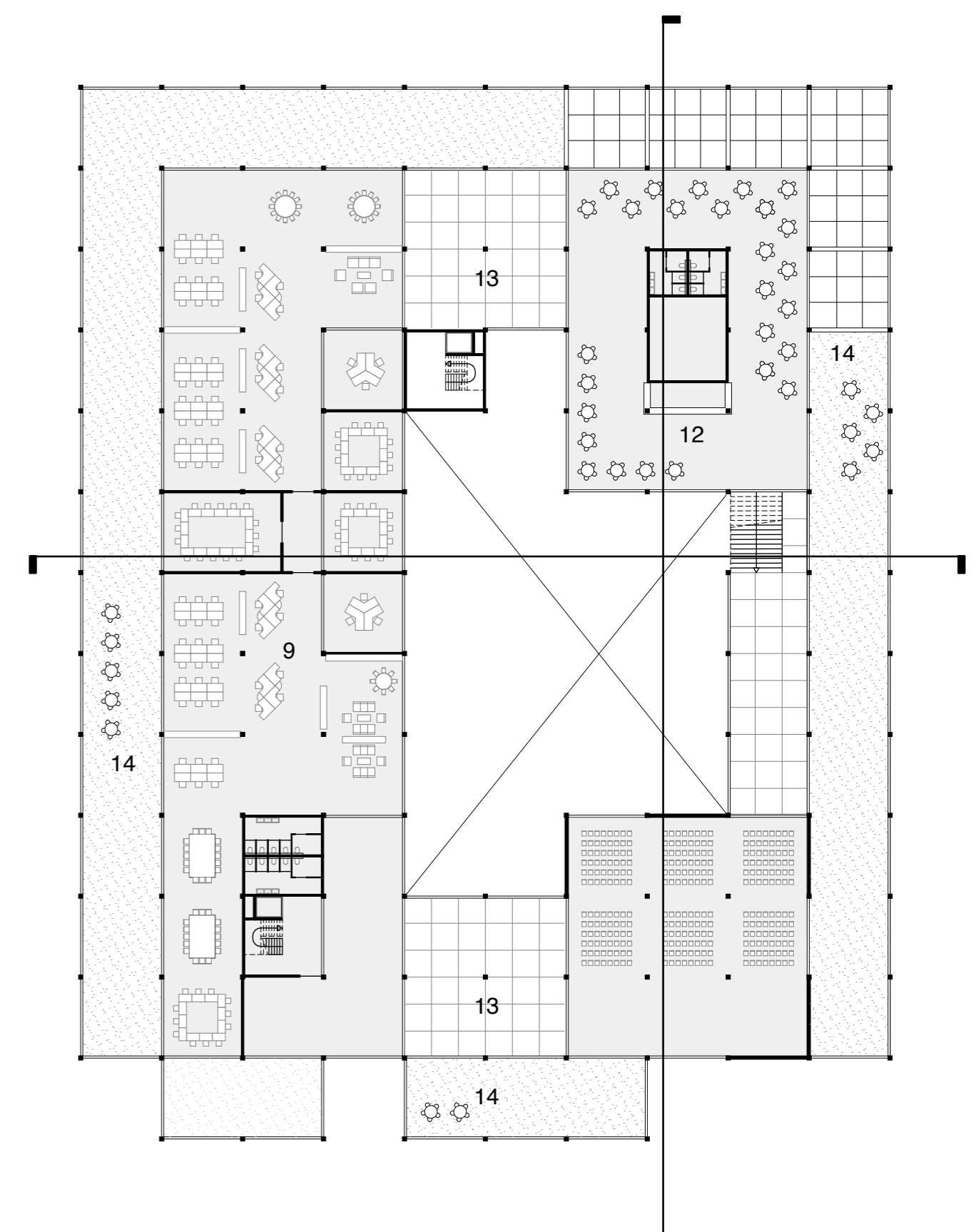
FIRST FLOOR

2. COUNCIL HALL - THEATRE
4. KINDERGARTEN
6. CITIZENS COUNCIL - CRAFT ROOMS
9. OFFICES PUBLIC SERVANTS



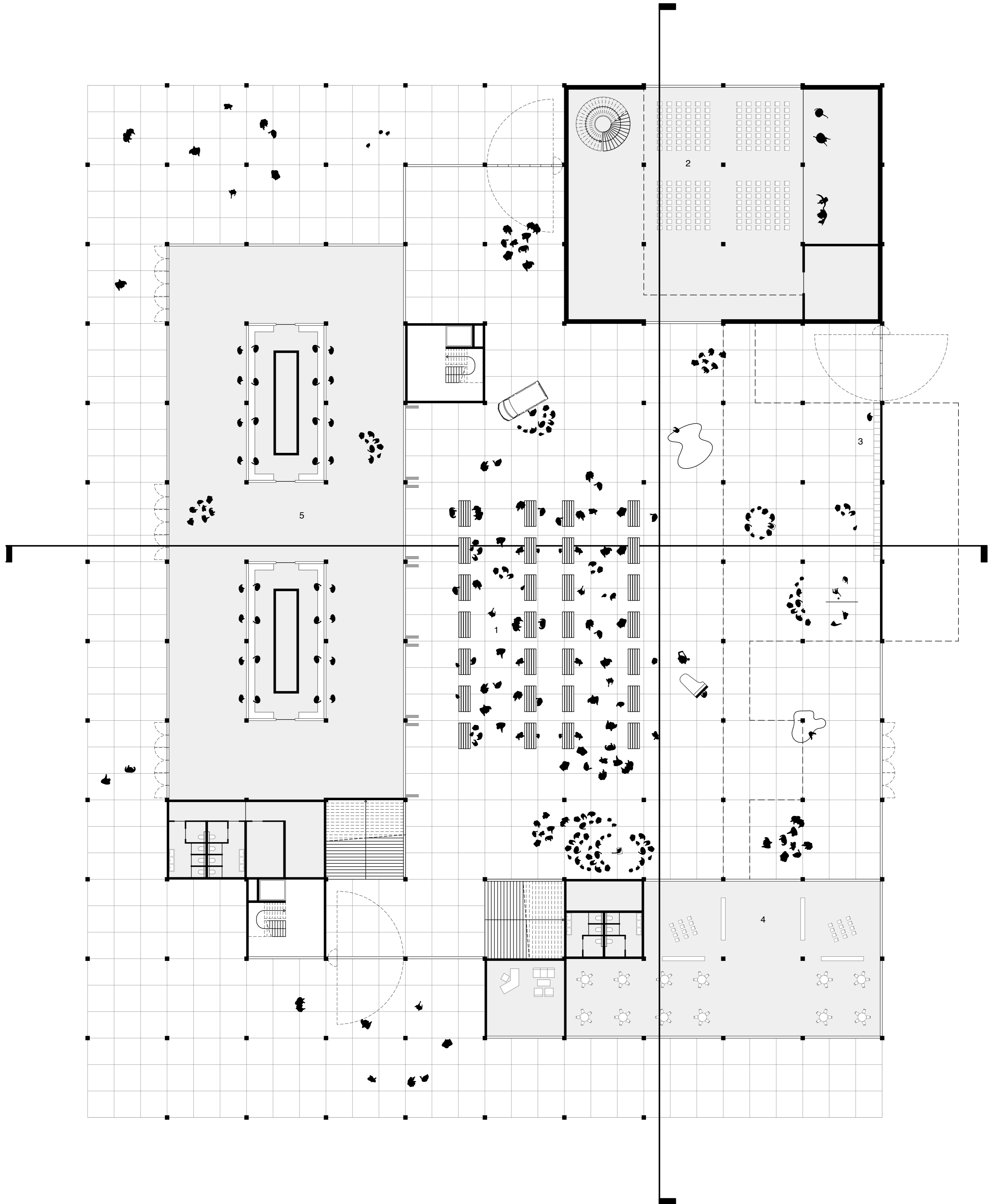
THIRD FLOOR

7. CONFERENCE HALL - MUSIC ANDS SPORTS ROOM
8. OFFICES MAYOR AND ALDERMAN
9. OFFICES PUBLIC SERVANTS
10. PARTY ROOMS



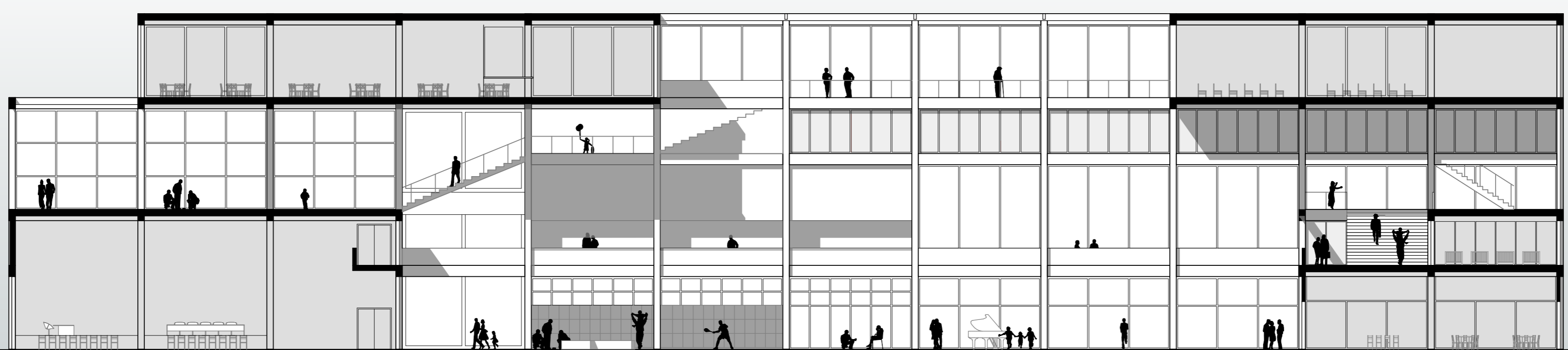
FOURTH FLOOR

9. OFFICES PUBLIC SERVANTS
11. CIVIC HALL
12. RESTAURANTS - CAFE
13. PATIO
14. ROOFTOP TERRACE



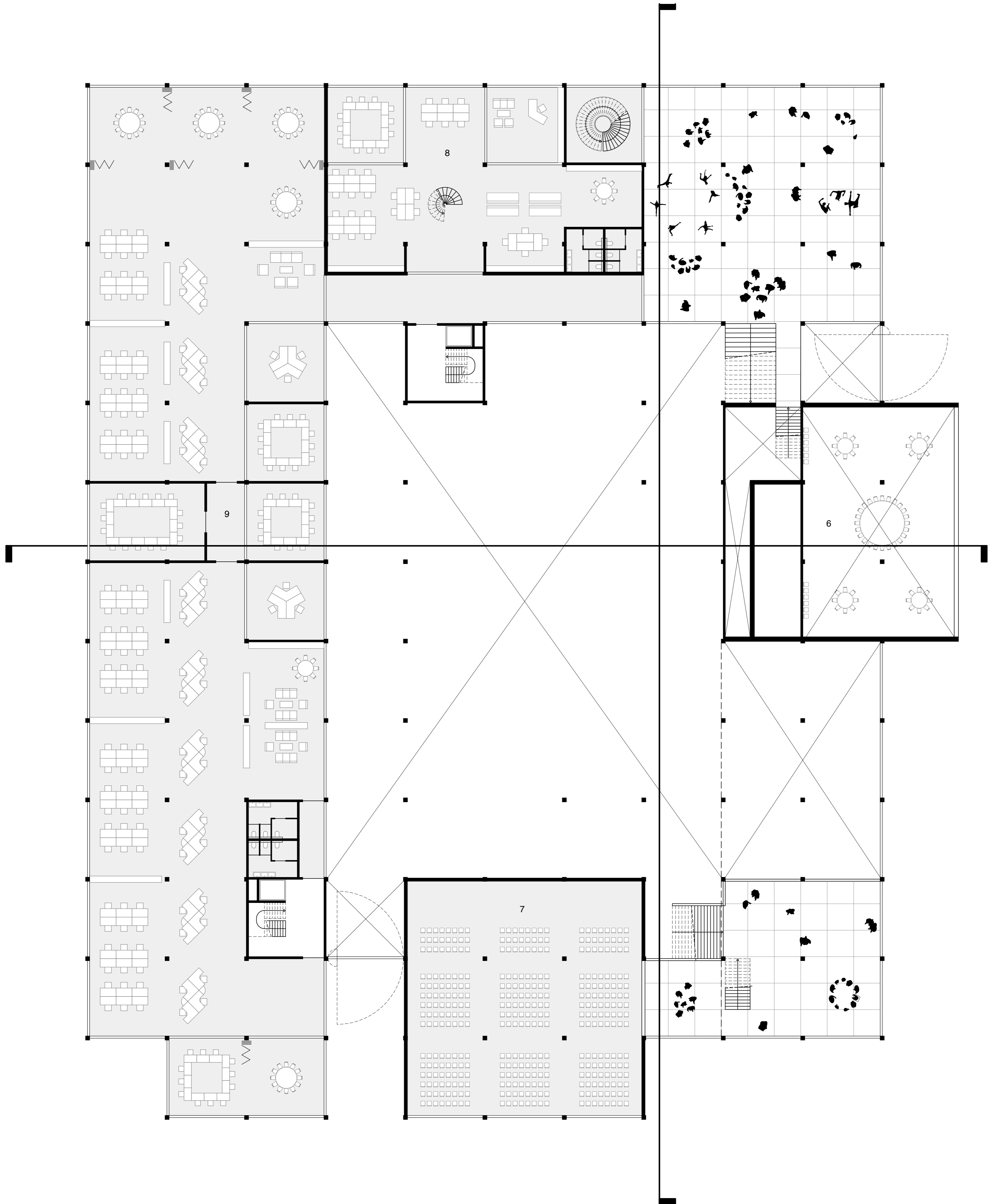
GROUND FLOOR

1. ATRIUM - TOWN HALL SQUARE
2. COUNCIL HALL - THEATRE
3. PARCEL LOCKERS
4. KINDERGARTEN
5. PUBLIC AFFAIRS - ART GALLERY



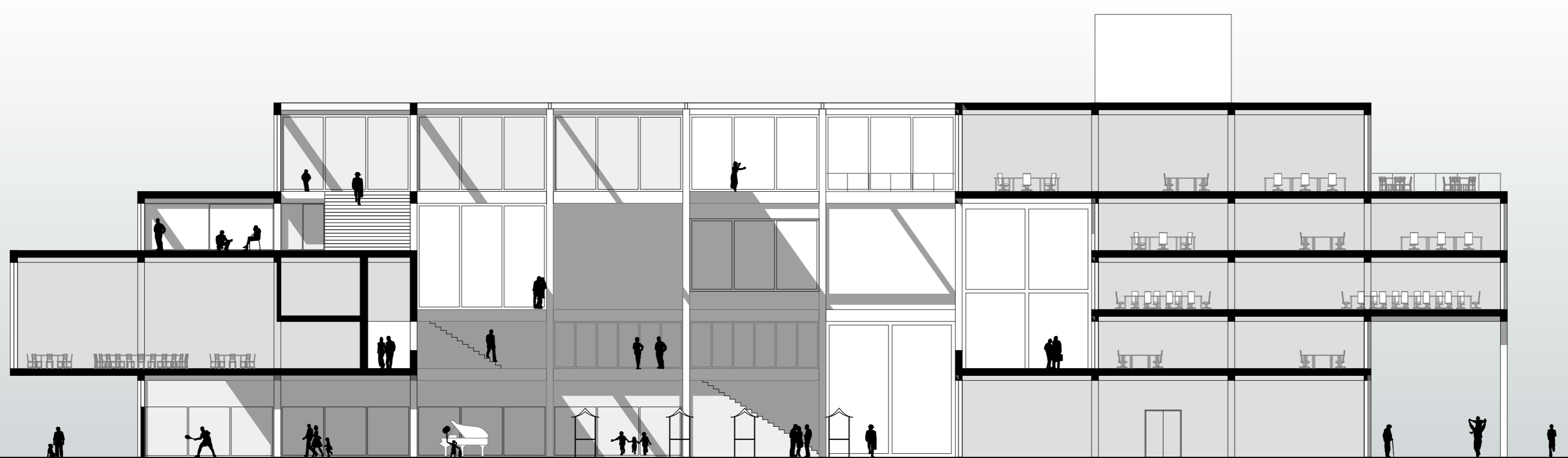
LONG SECTION

0 1 5 10



SECOND FLOOR

- 6. CITIZENS COUNCIL - CRAFT ROOMS
- 7. CONFERENCE HALL - MUSIC AND SPORTS ROOM
- 8. OFFICES MAYOR AND ALDERMAN
- 9. OFFICES PUBLIC SERVANTS



CROSS SECTION

0 1 5 10