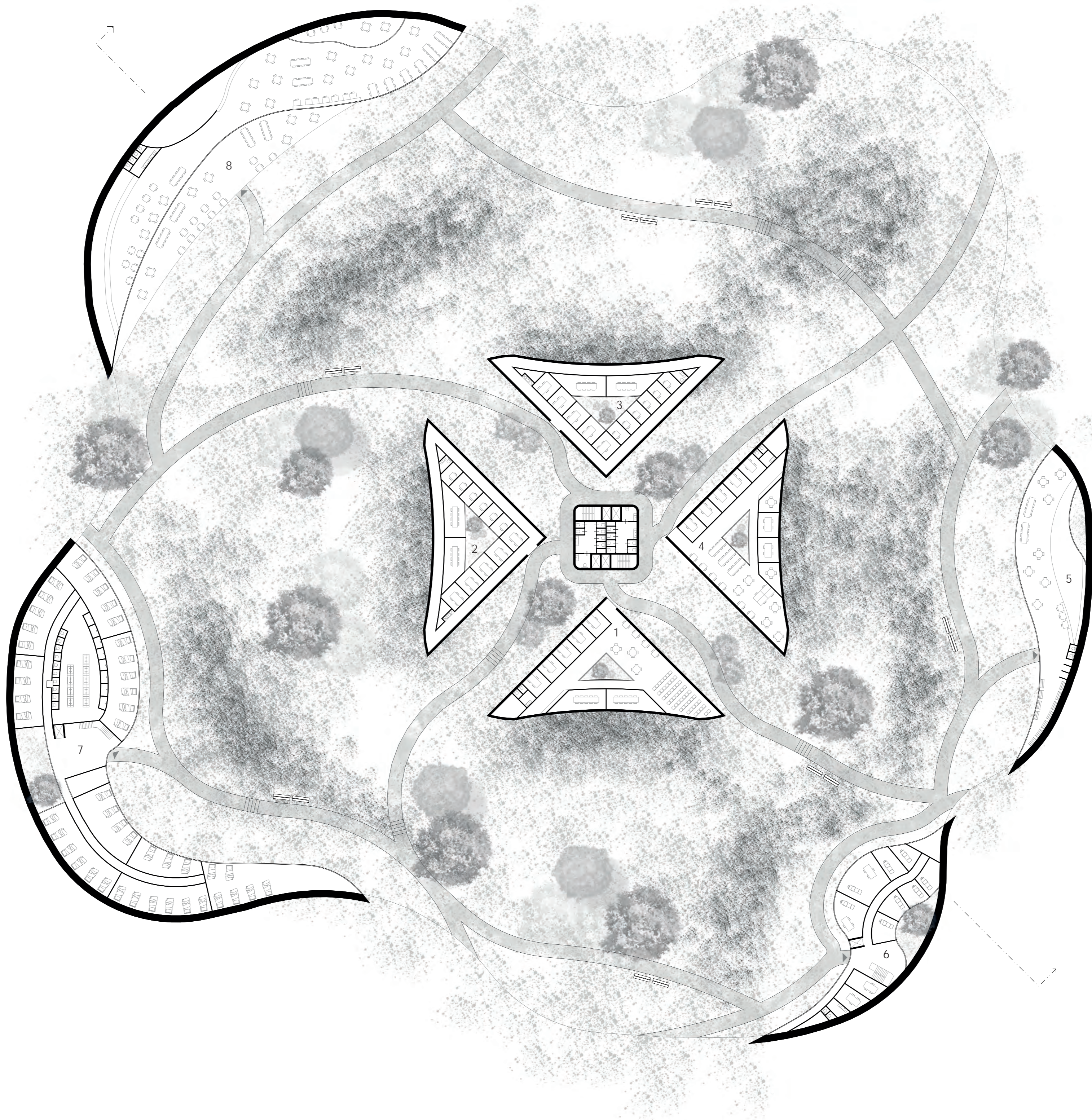


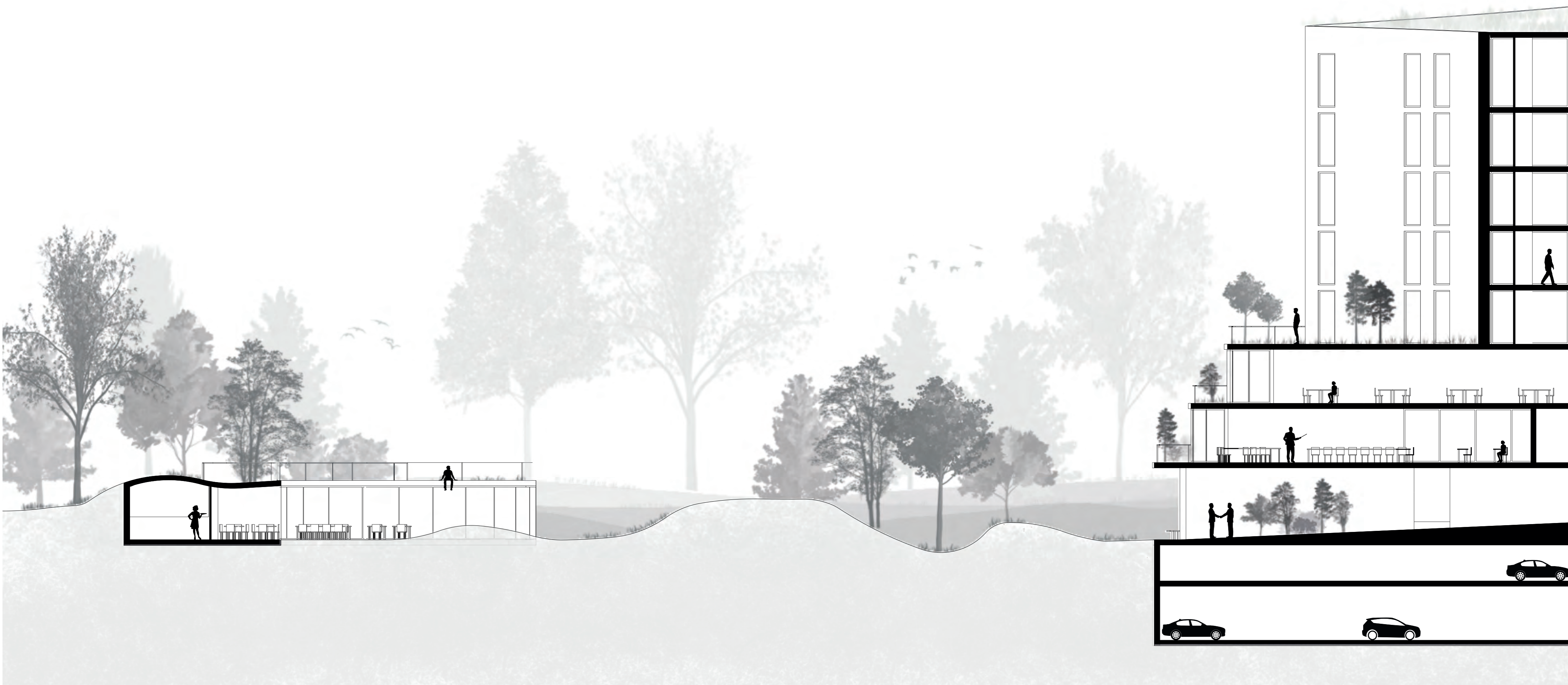
PARK OF THE CITY



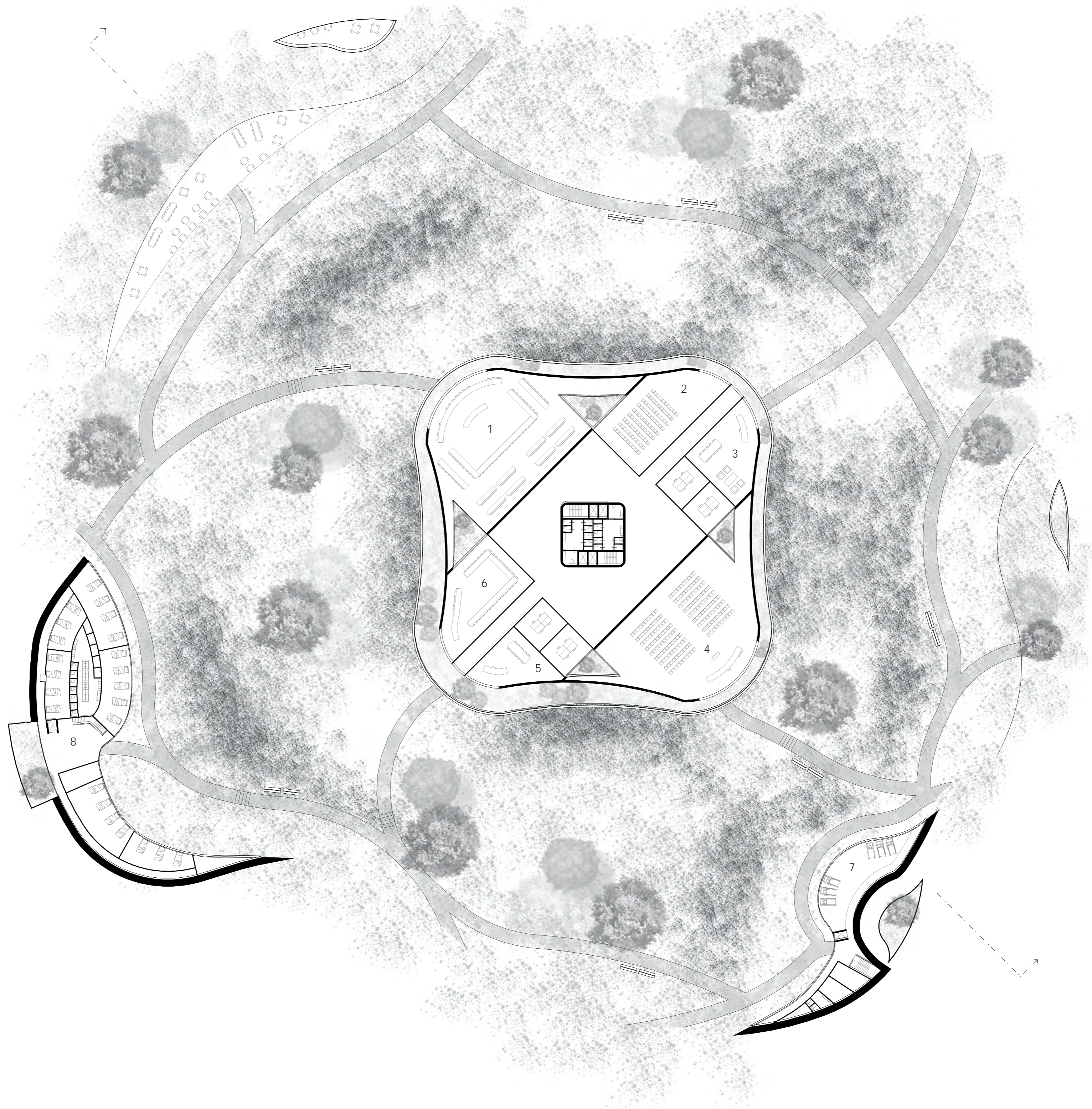
- 1. Courses
- 2. Courses
- 3. Social Services & legal Aid
- 4. Job & house search

- 5. Community centre & second-hand shop
- 6. Health care
- 7. Shelter
- 8. Café & foodbank

GROUND FLOOR | 1:400



PARK OF THE CITY



- 1. Council chamber
- 2. Atrium
- 3. Mayor's chamber
- 4. Wedding hall

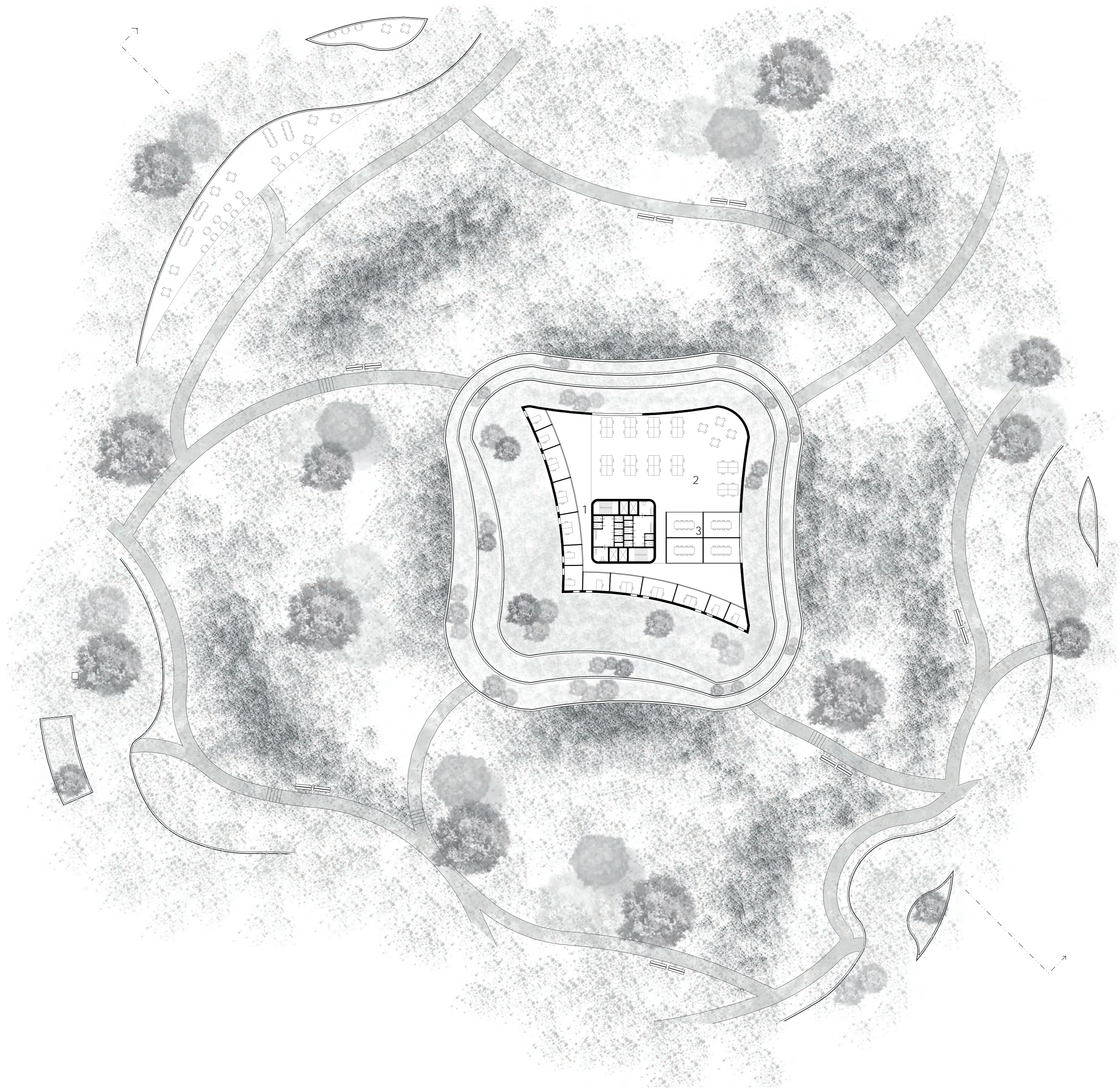
- 5. Offices
- 6. Civic chamber
- 7. Sports centre
- 8. Shelter

FIRST FLOOR | 1:400



SECTION | 1:150

PARK OF THE CITY



- 1. Offices
- 2. Flex workspace
- 3. Meeting rooms

SIXTH FLOOR | 1:400

