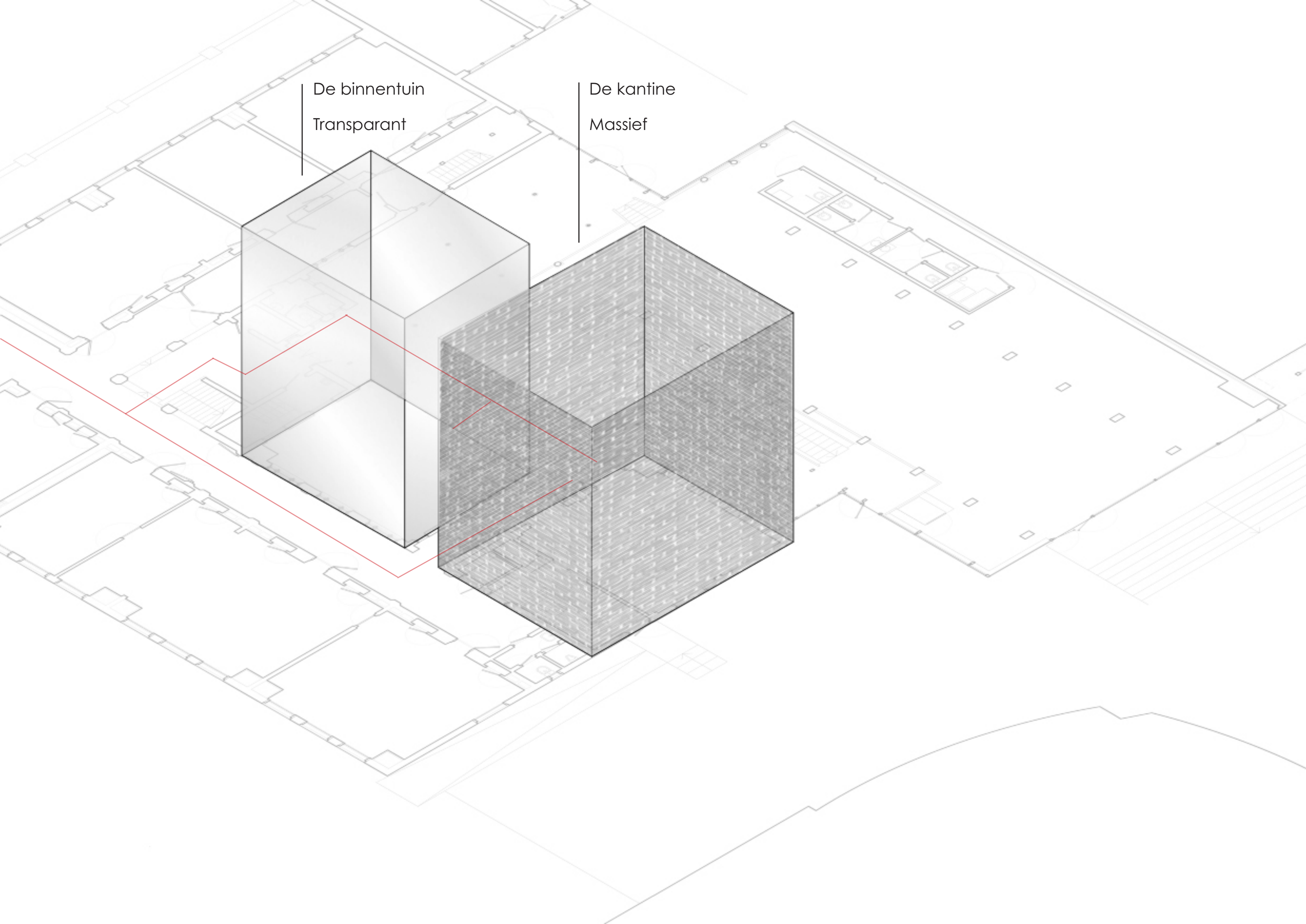


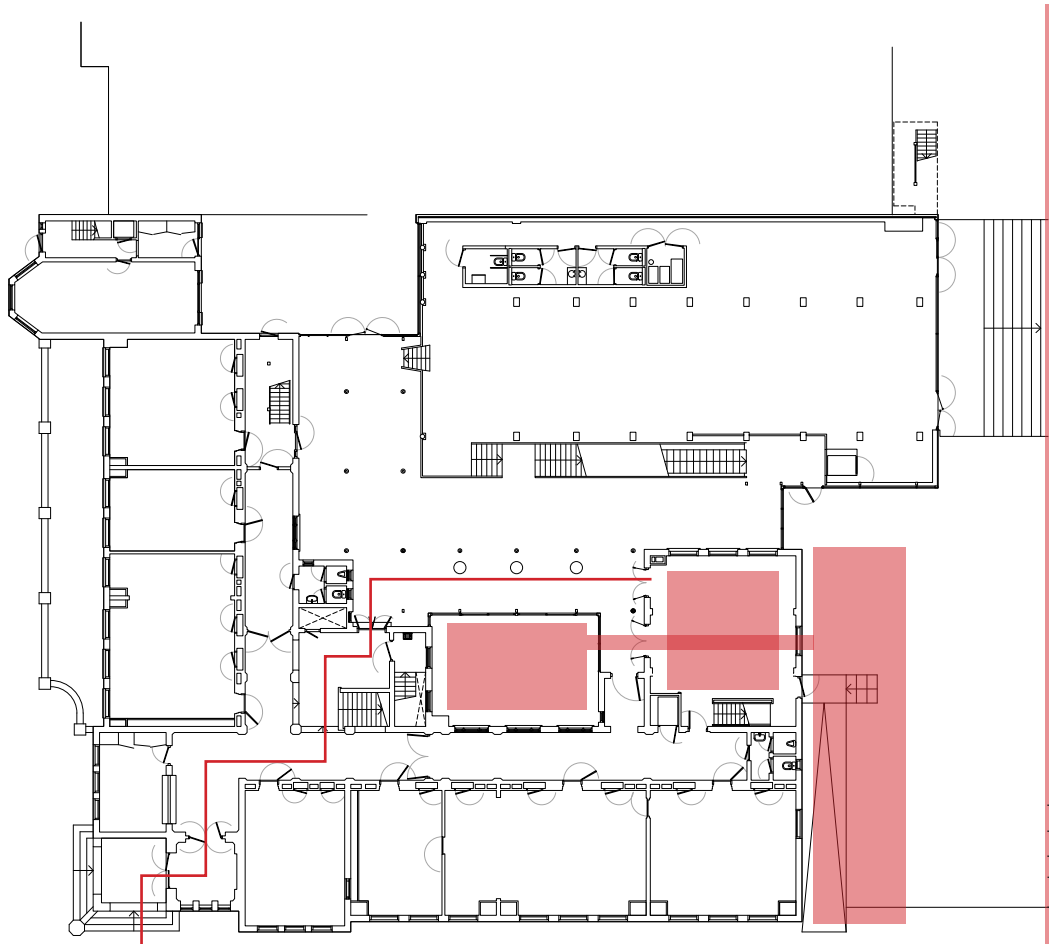
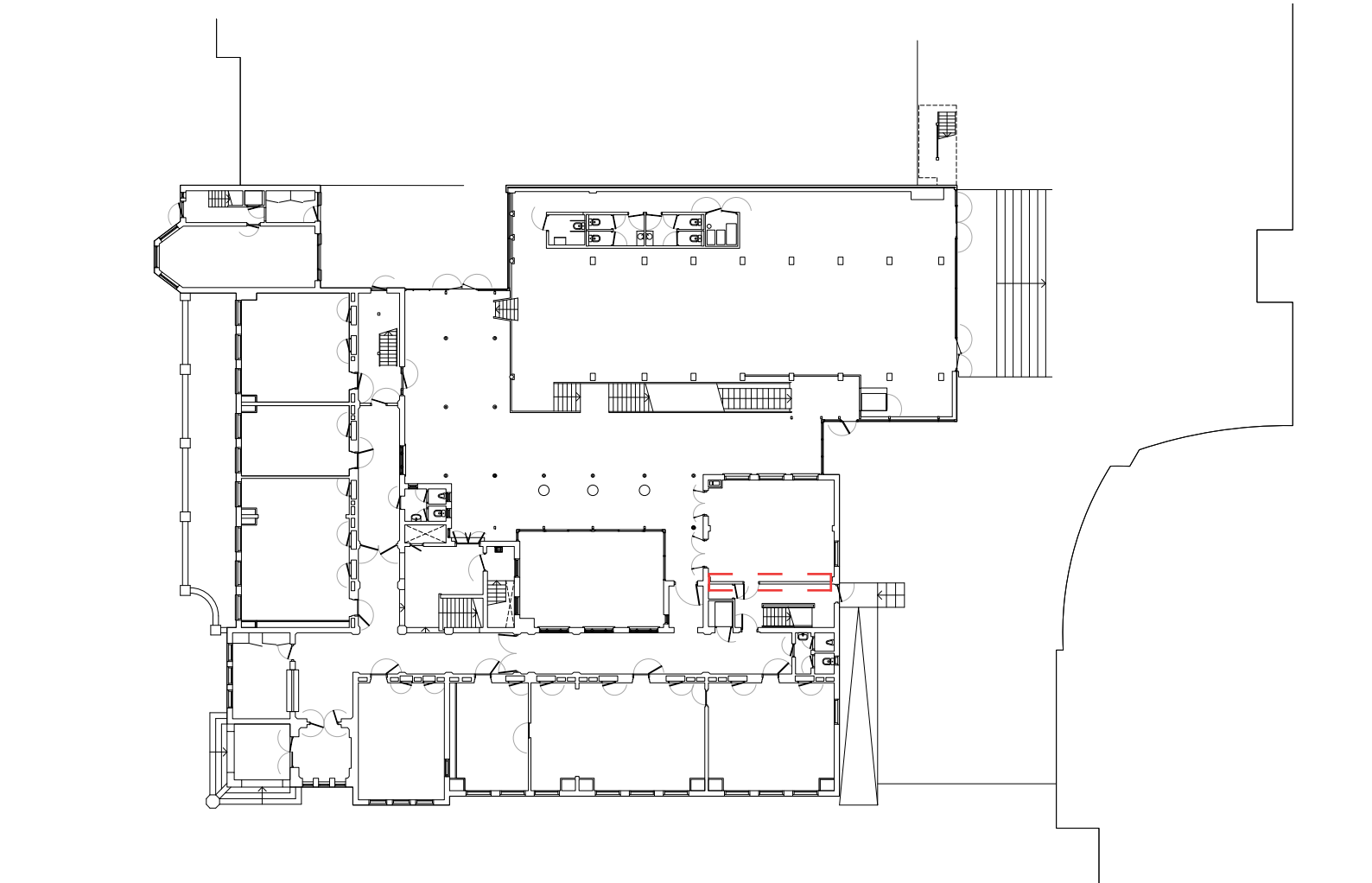
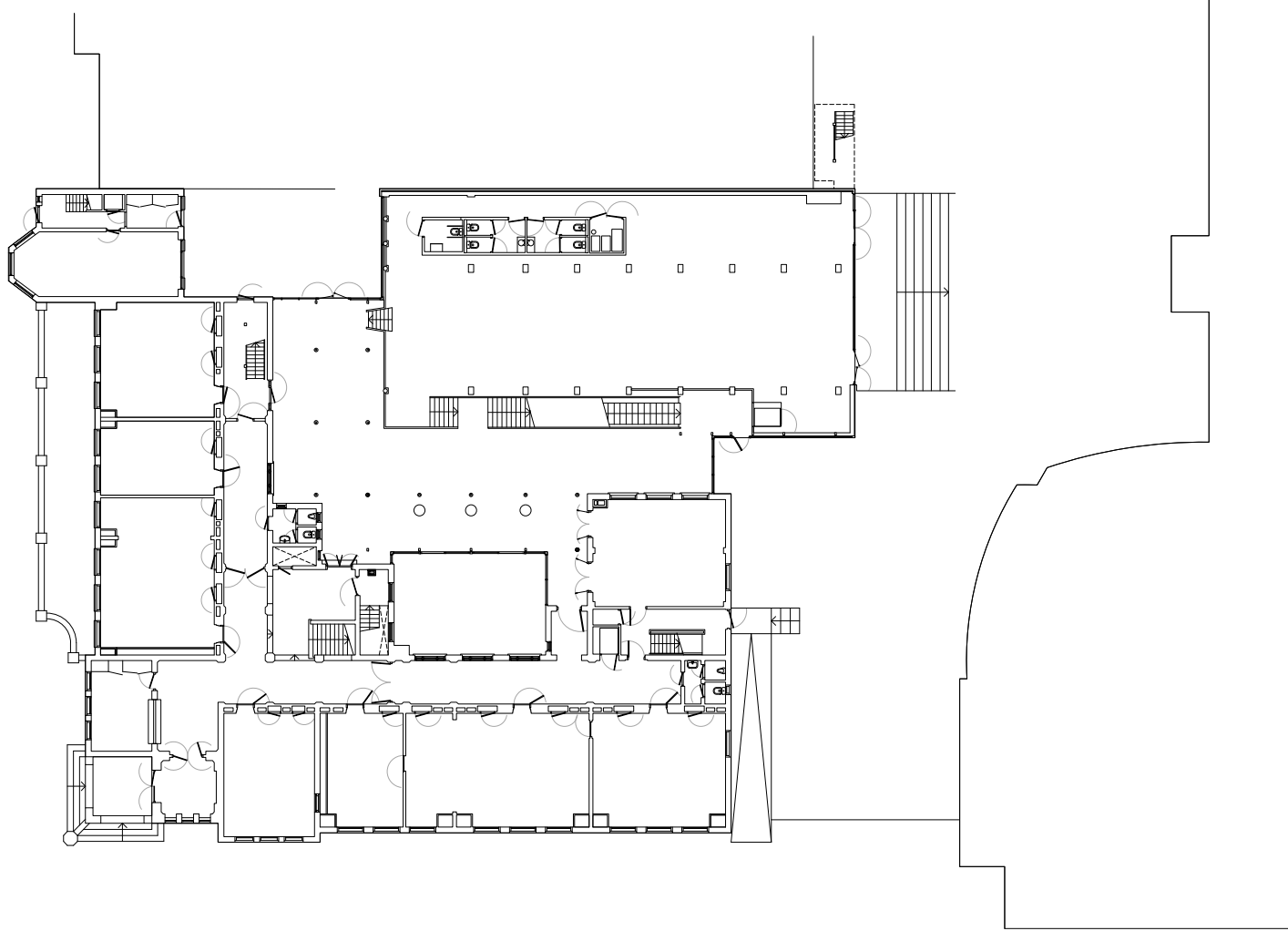


De kantine en het veelzijdig element

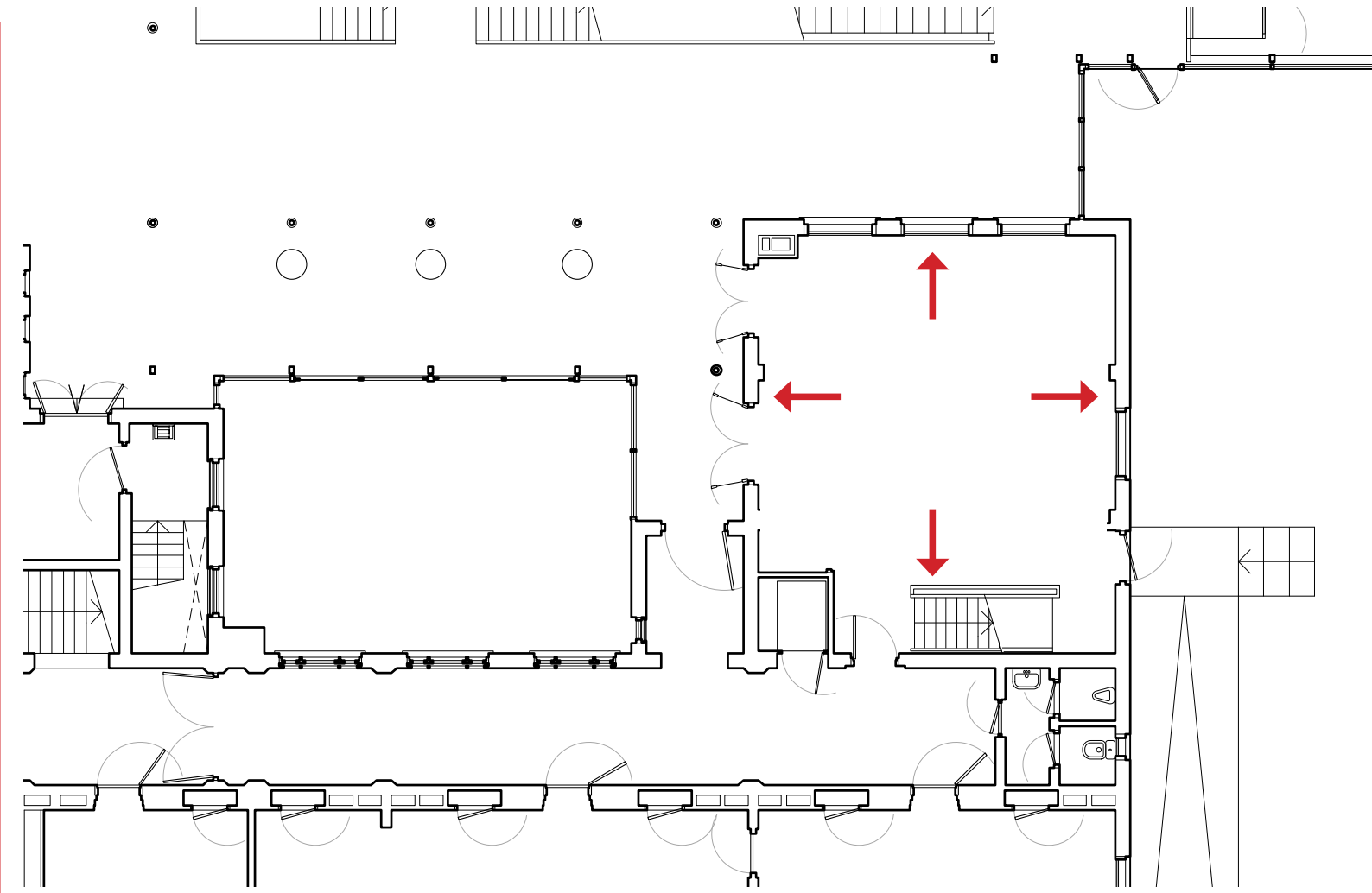
De binnentuin
Transparant

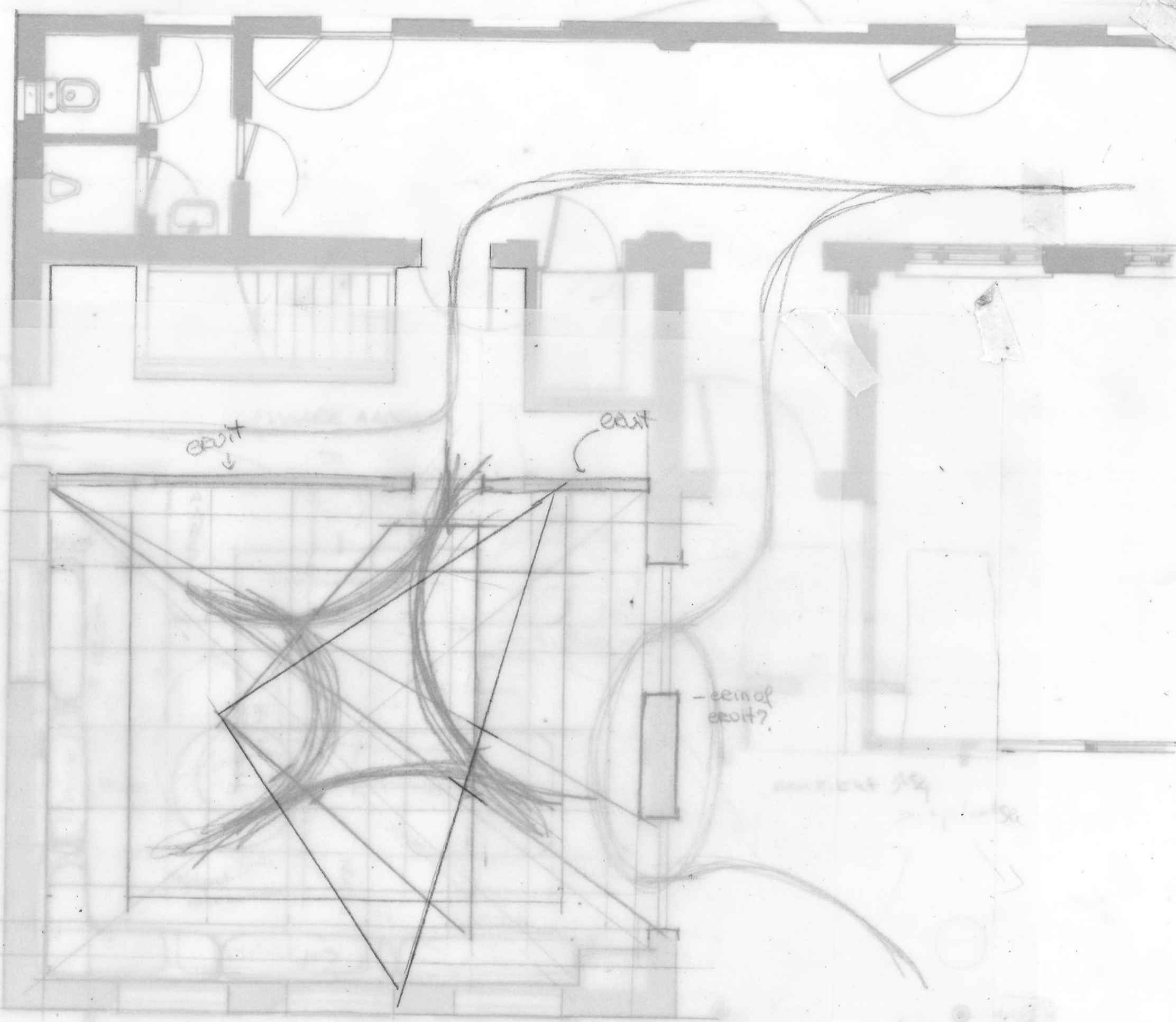
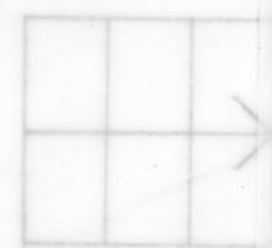
De kantine
Massief





3 gedefinieerde ruimtes
1 vormtaal genereren
De kantine als verbindende factor
tussen 2 buitenruimtes
Herkenbaar en toepasbaar





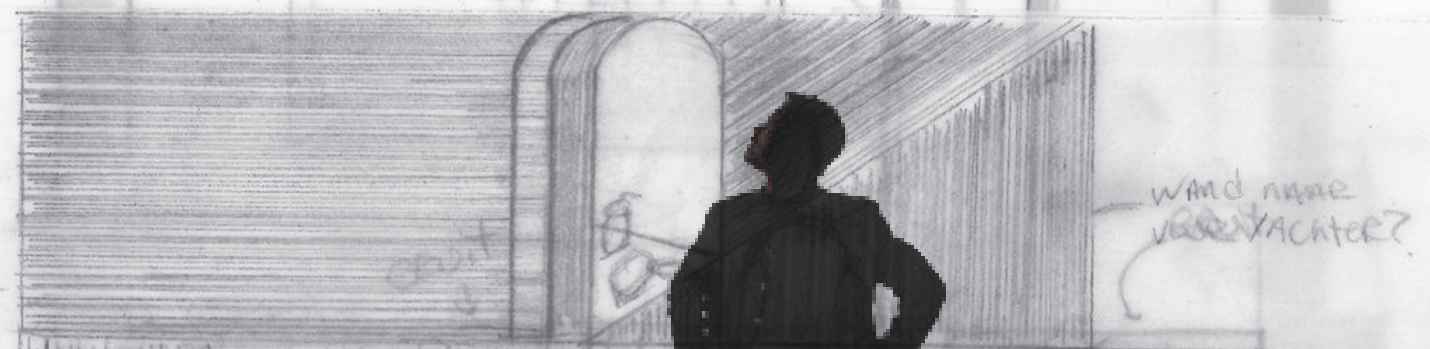
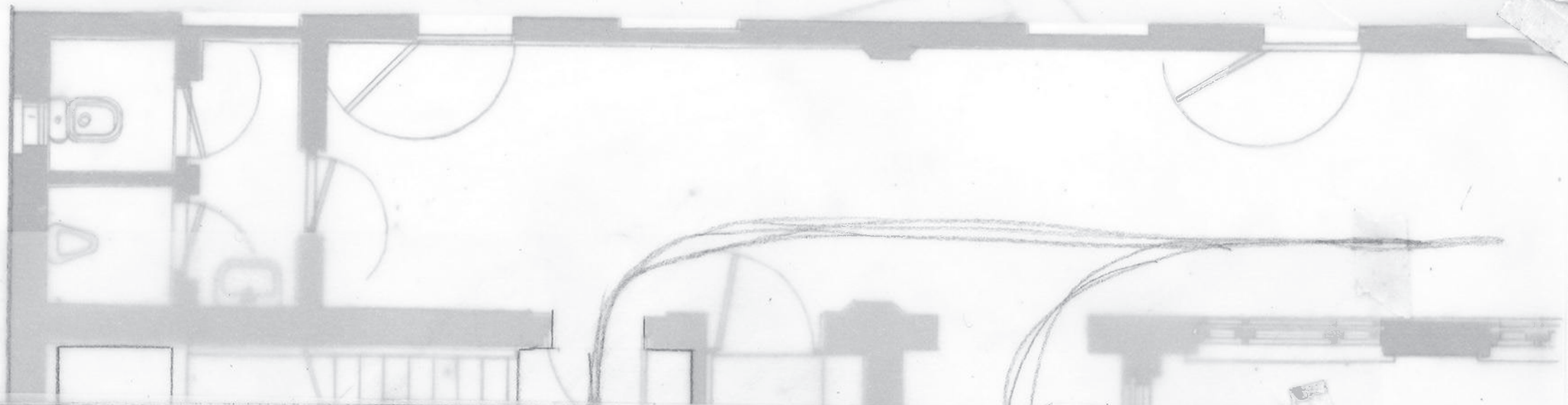
exit
↓

exit
↙

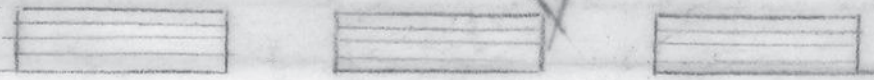
- end of
exit?

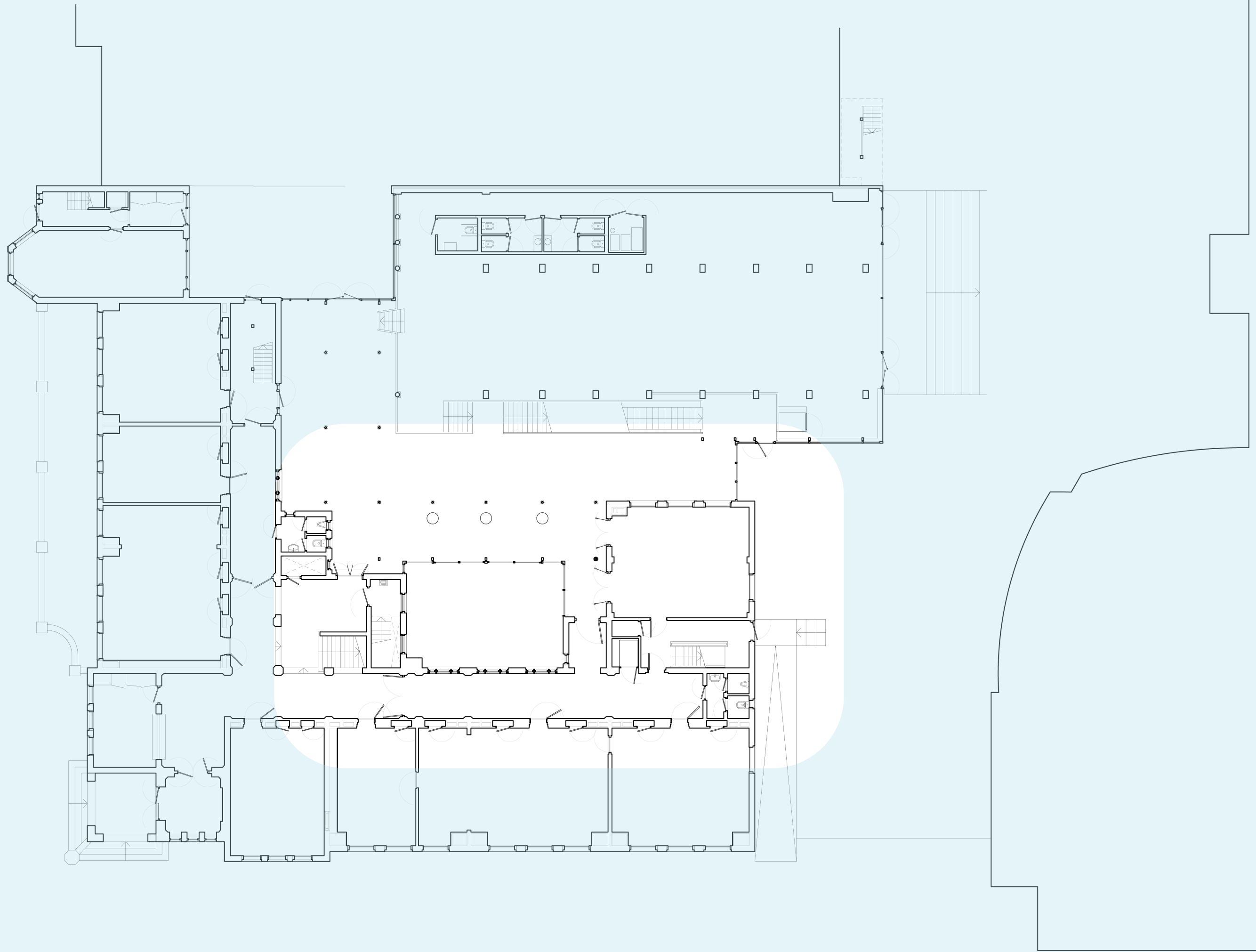
exit 55
21/1/56

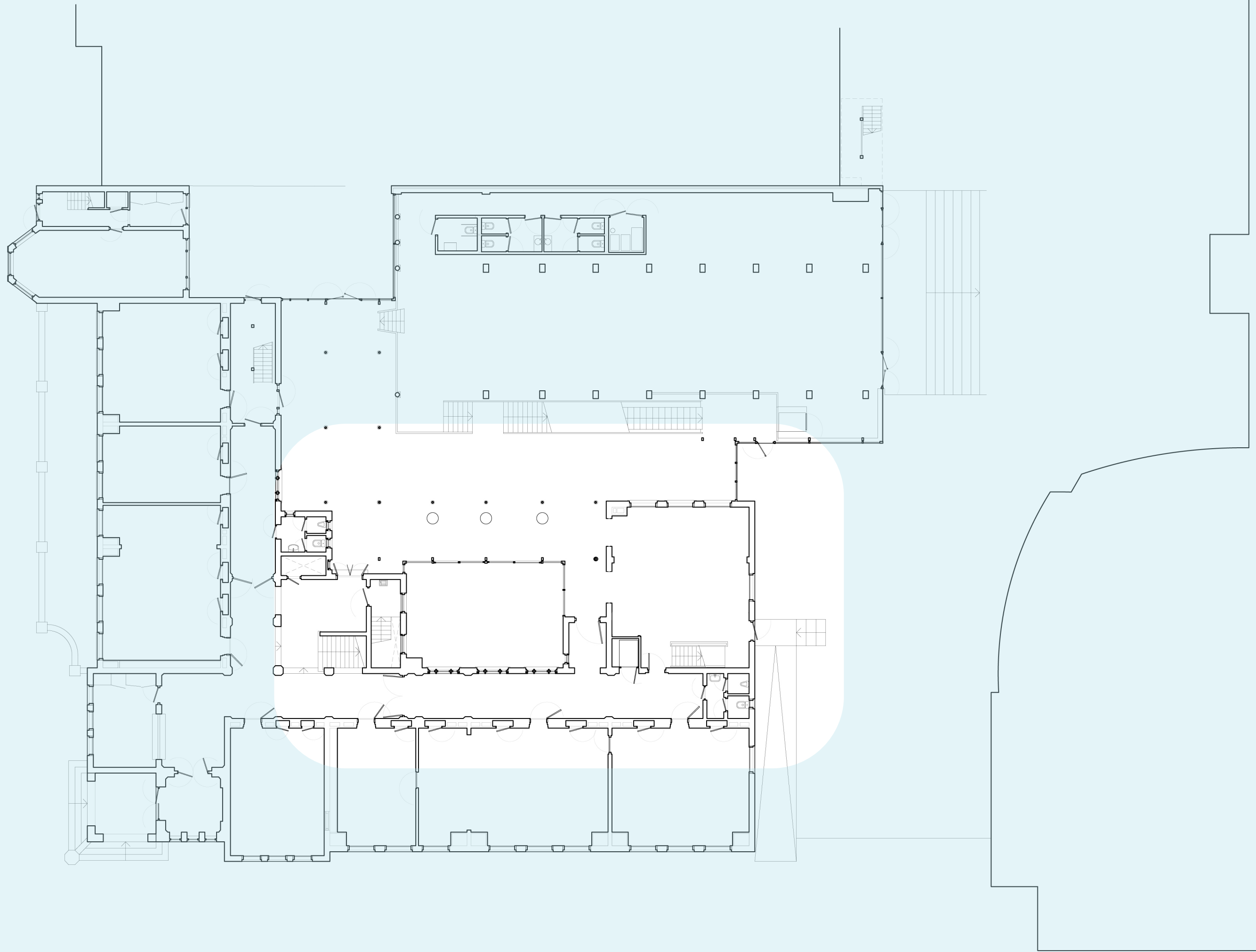
11/10/56

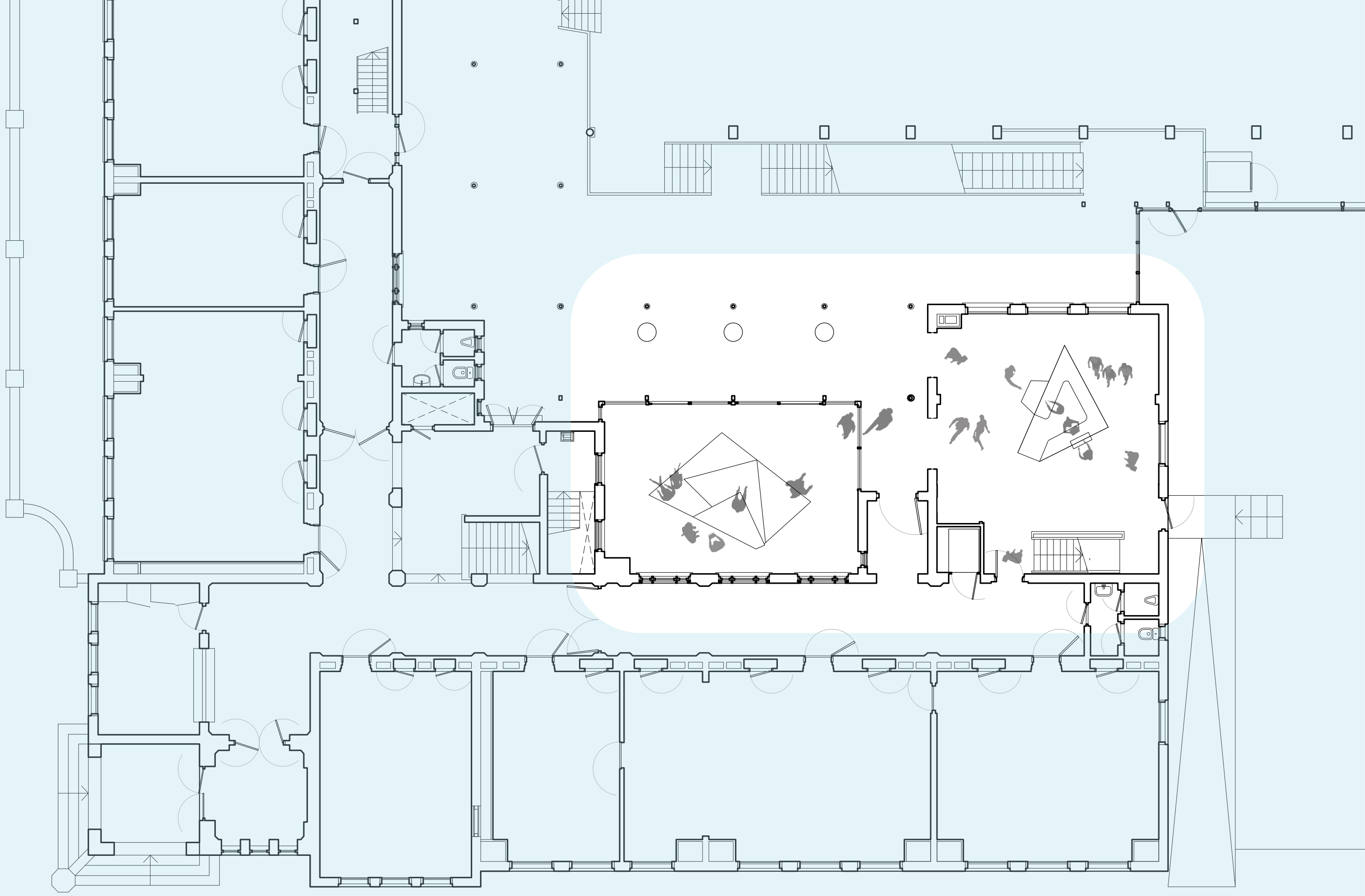


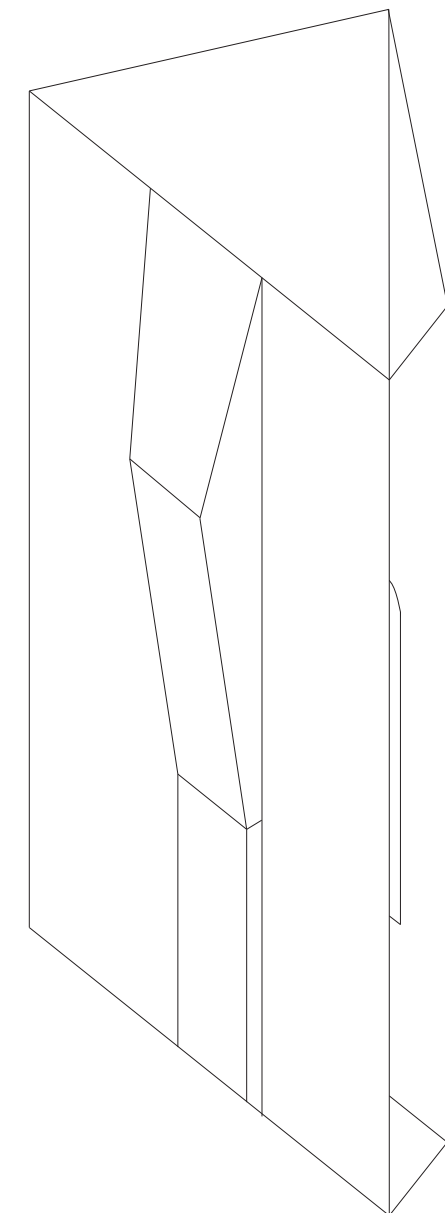
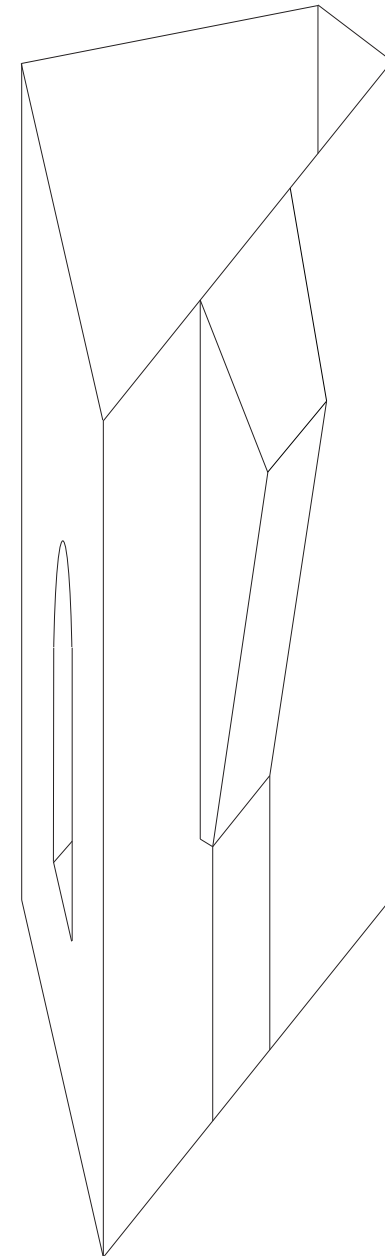
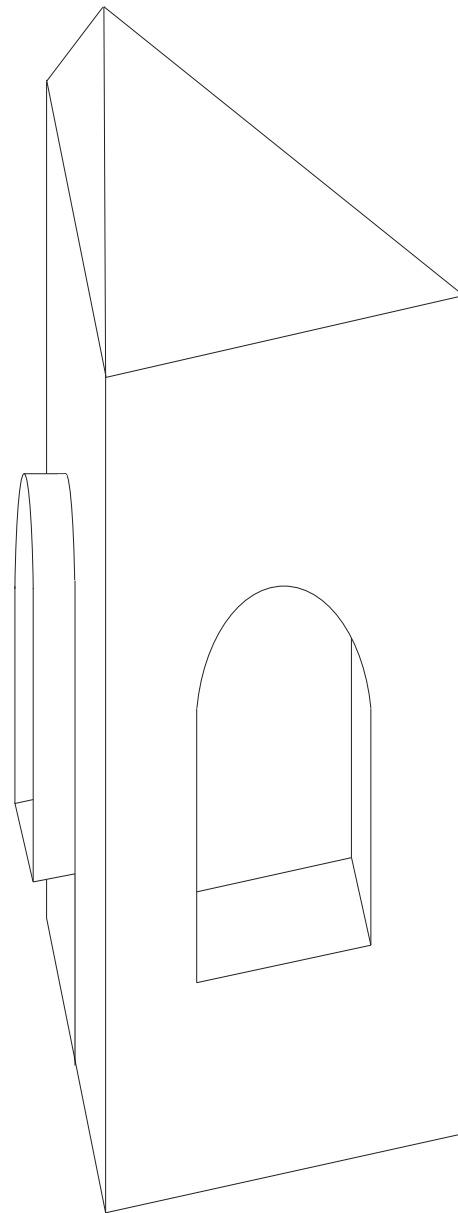
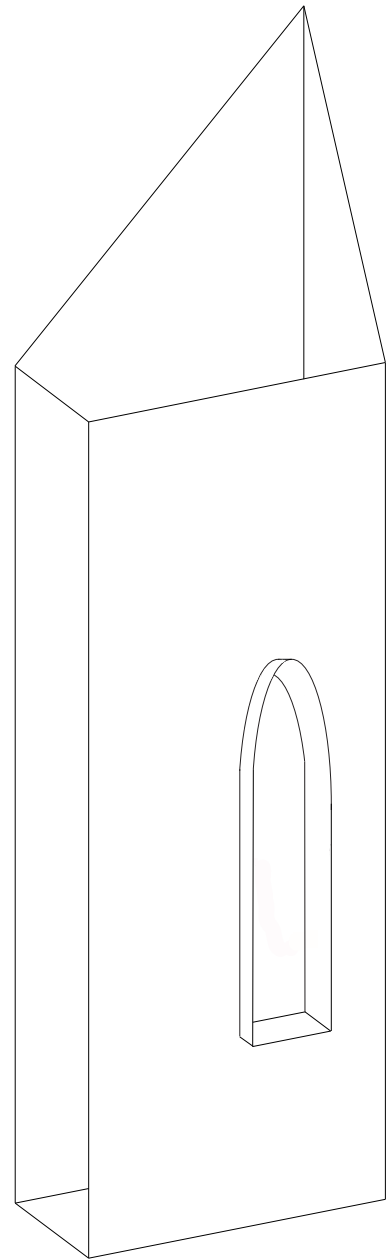
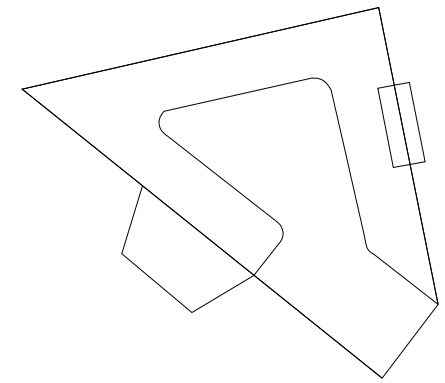
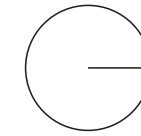
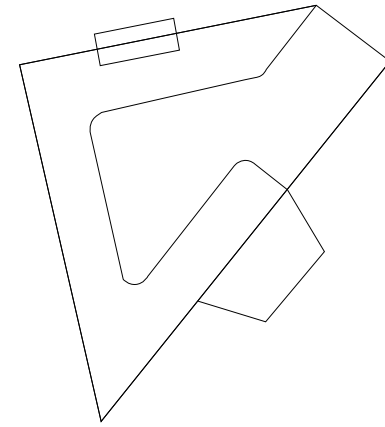
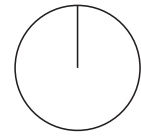
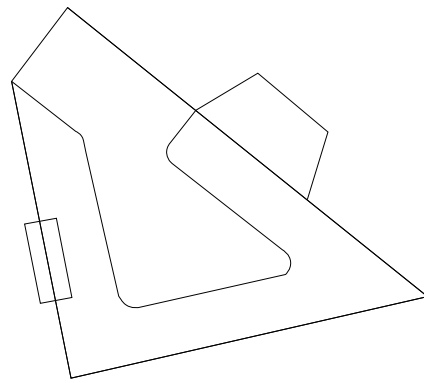
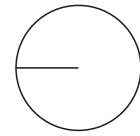
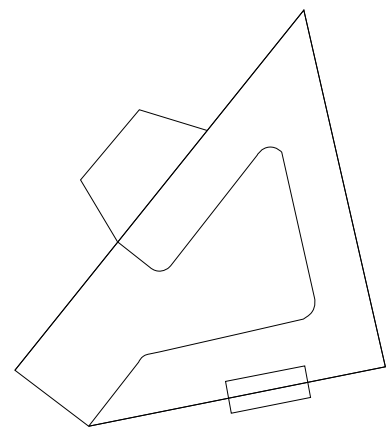
Waar
naar verhuizen?



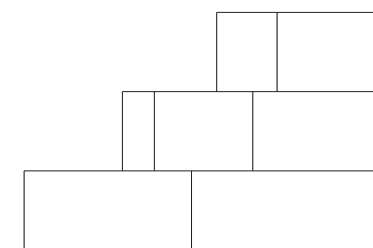
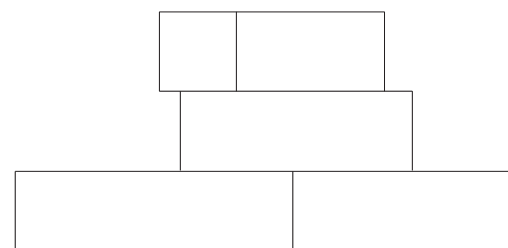
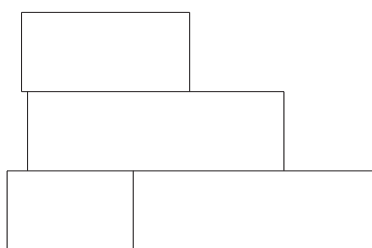
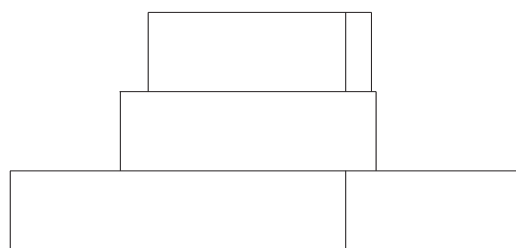
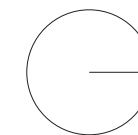
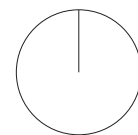
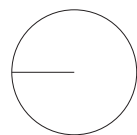
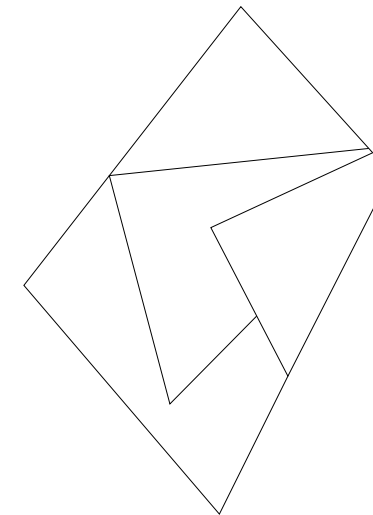
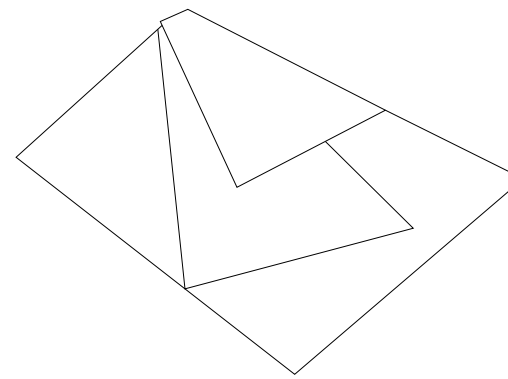
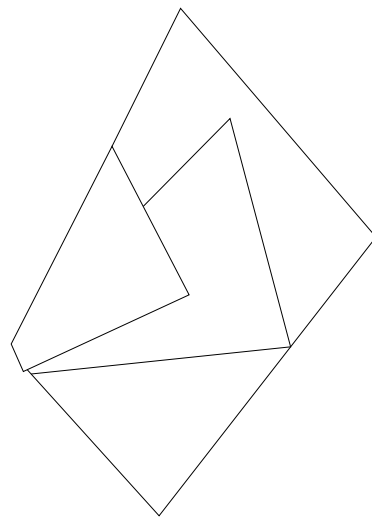
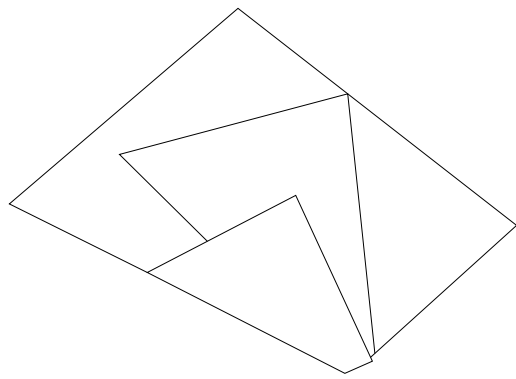




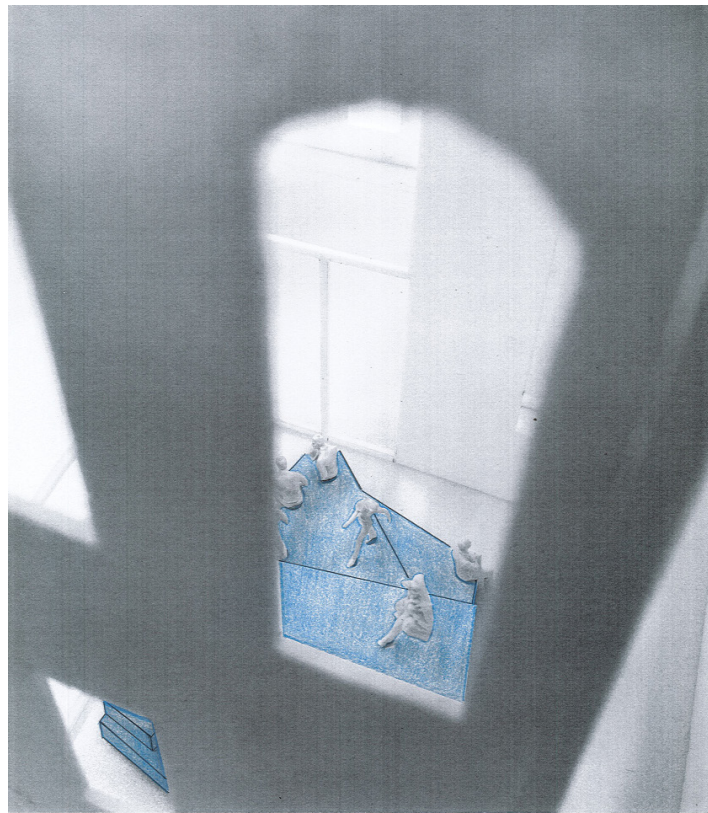




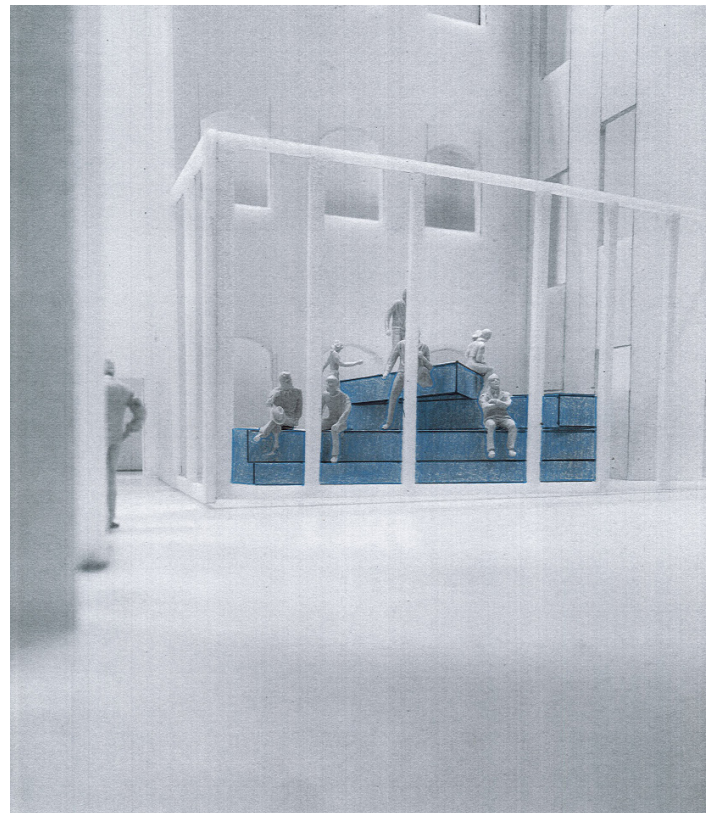
De kantine 360 °



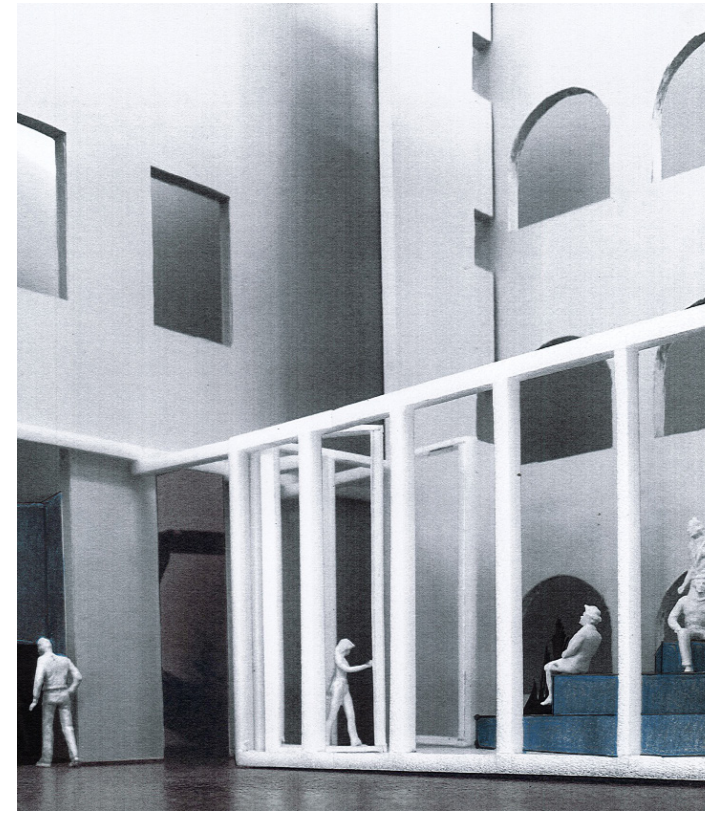
Het veelzijdig element 360°



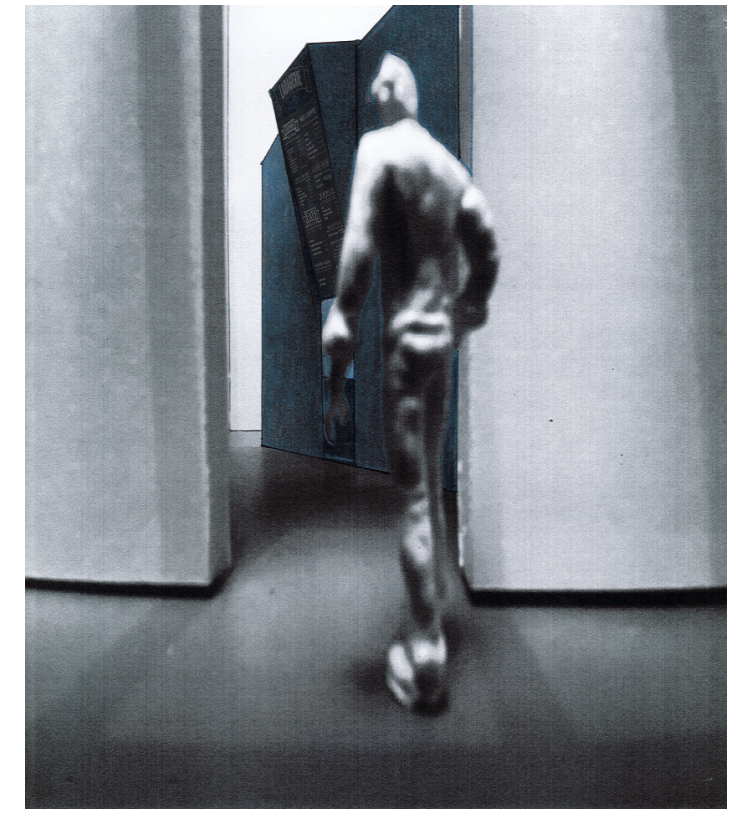
Het gebogen raam frameet het veelzijdig element in de binnentuin van het Rotterdamse Academiegebouw.



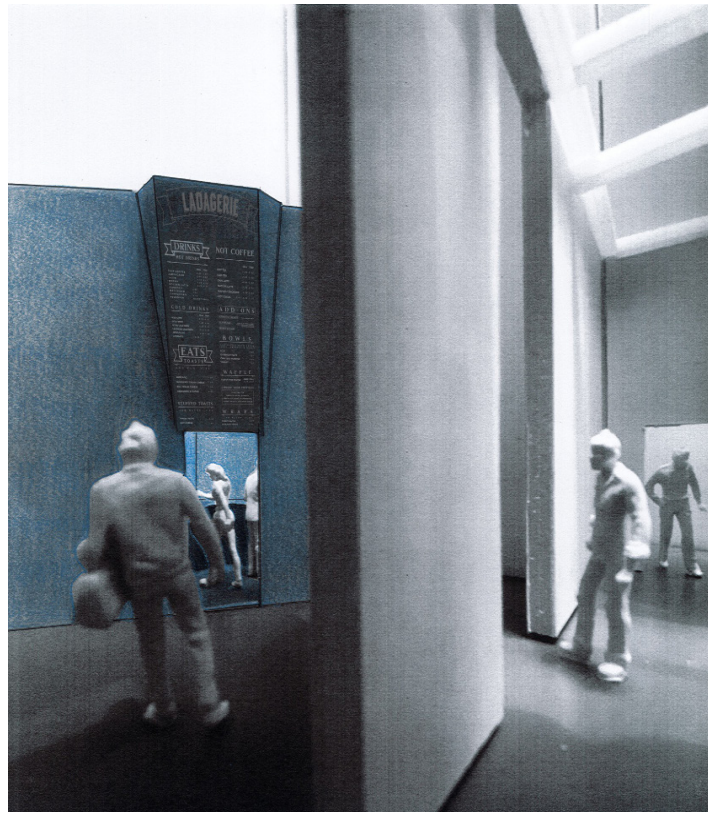
Het veelzijdig element wordt niet alleen door gebogen ramen geframet, maar ook door witte raamkozijnen die door trekken naar de rest van het openbare gedeelte van het gebouw.



Om verbinding te vormen staat het element recht tegenover de kantine. Door deze verbinding is de binnentuin een plek geworden waar studenten en docenten hun pauzes spenderen.



Vanuit de binnentuin is een schemering te zien van de kantine. Deze opening wordt geaccentueerd door de middelste muur die twee openingen vormt.



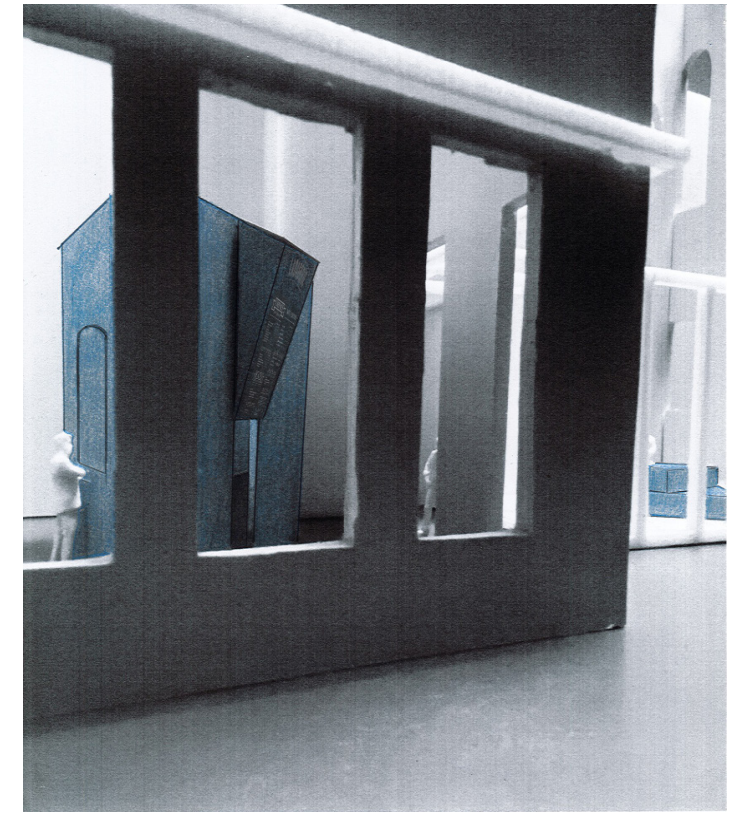
De kantine is één van de meest bezochte plekken in het gebouw.



De grote driehoek is centraal geplaatst in tegenstelling tot de ruimte en is te benaderen via meerdere openingen.



Doordat het element 360° bereikbaar is blijft het "veelzijdig element" in de binnentuin in het vizier van de gebruikers.



De kantine en het veelzijdig element zijn de nieuwste aanwinsten van het Academiegebouw. Hun doel...nieuwe ontmoetingsplekken voorzien voor de student en docent.









