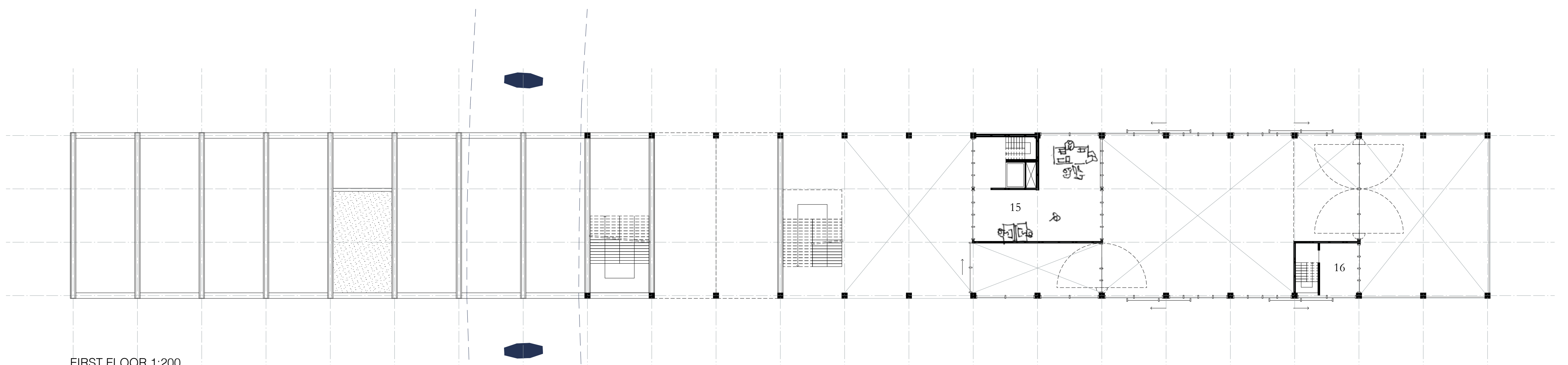
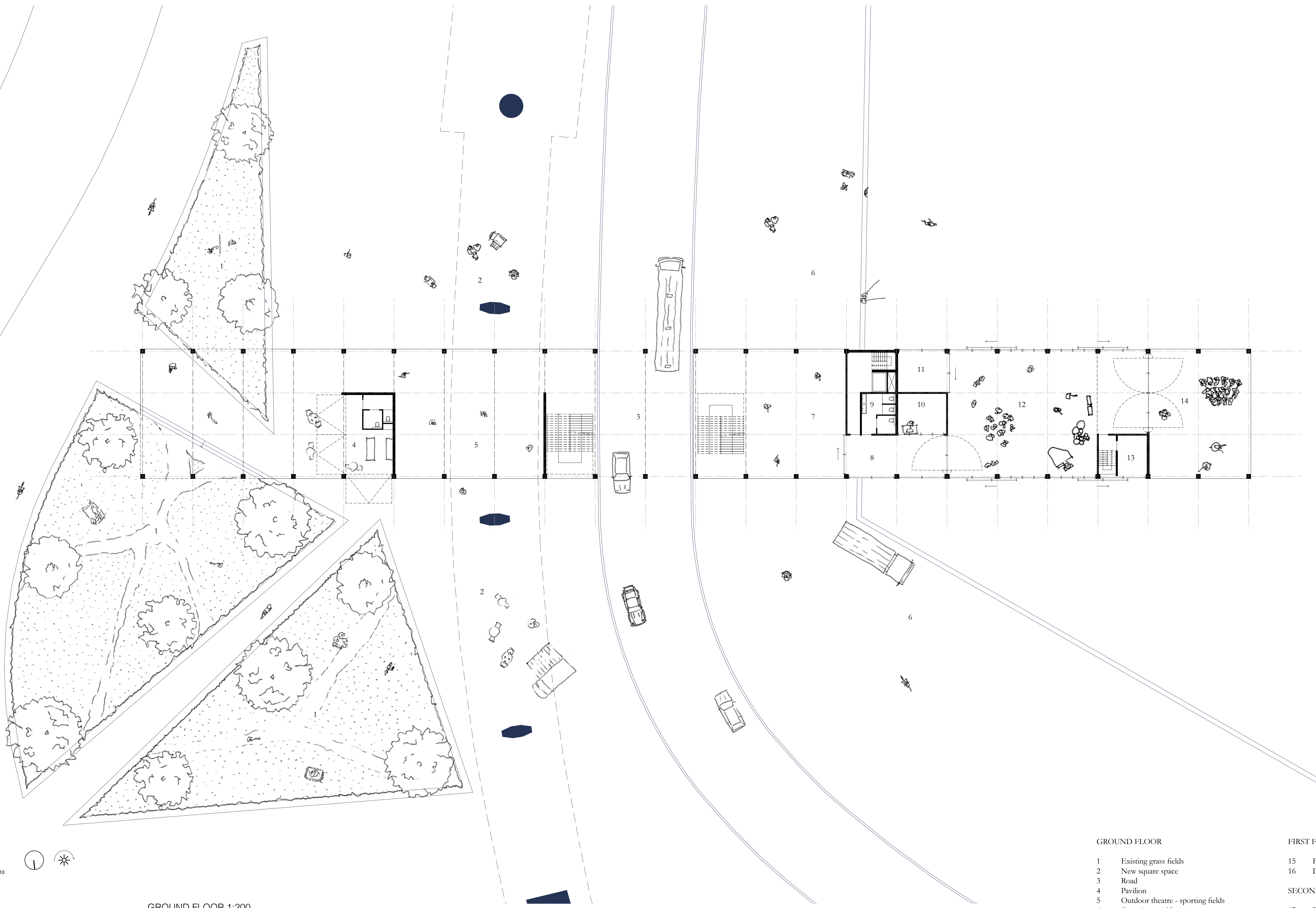


SECOND FLOOR 1:200



FIRST FLOOR 1:200



GROUND FLOOR 1:200

GROUND FLOOR

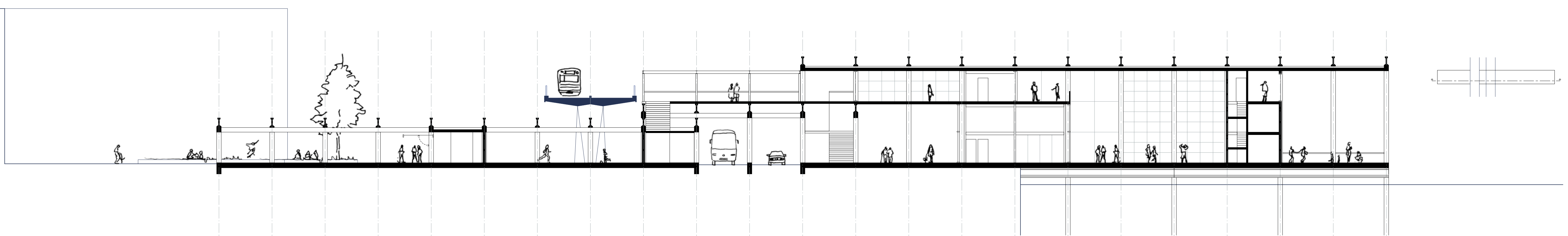
- 1 Existing grass fields
- 2 New square space
- 3 Road
- 4 Pavilion
- 5 Outdoor theatre - sporting fields
- 6 Quay | waterside
- 7 Passage
- 8 Entry
- 9 Toilets
- 10 Cloakroom
- 11 Storage
- 12 Main theatre | music hall
- 13 Storage
- 14 Outdoor theatre | Patio

FIRST FLOOR

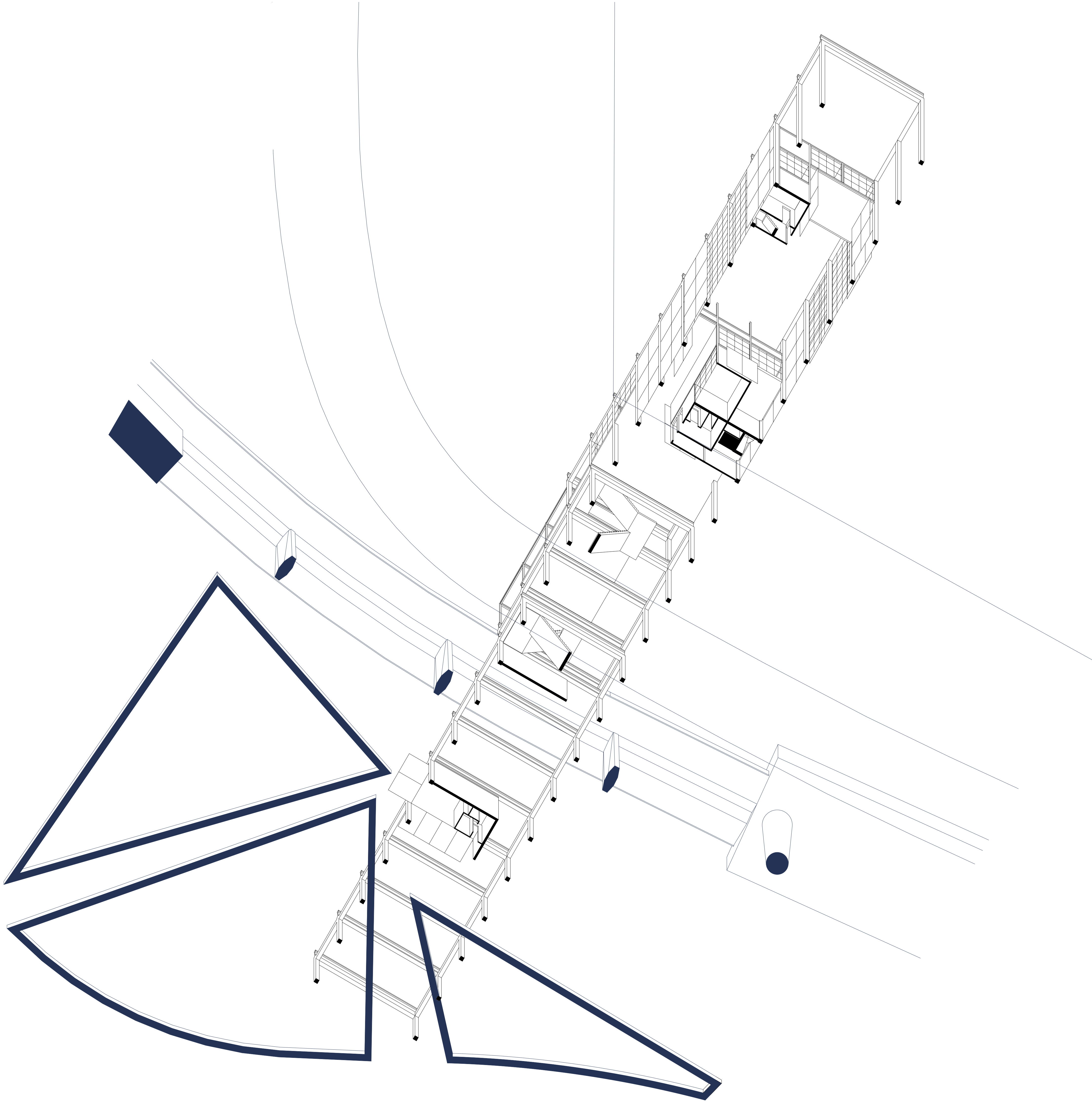
- 15 Employee break-room
- 16 Dressing room

SECOND FLOOR

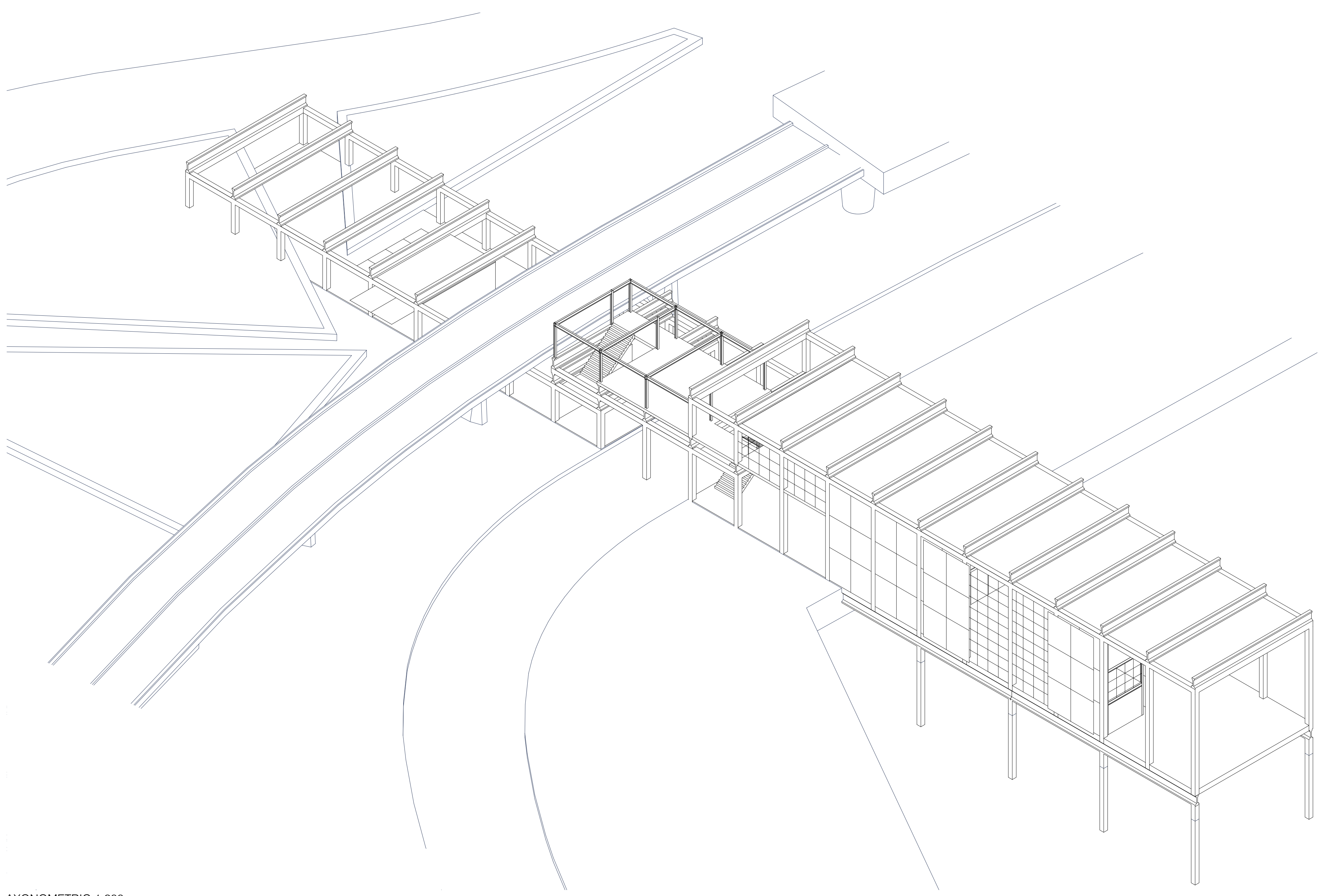
- 17 Bridge
- 18 Toilets
- 19 Conference space
- 20 Balcony
- 21 Storage
- 22 Dressing room



SECTION 1:200



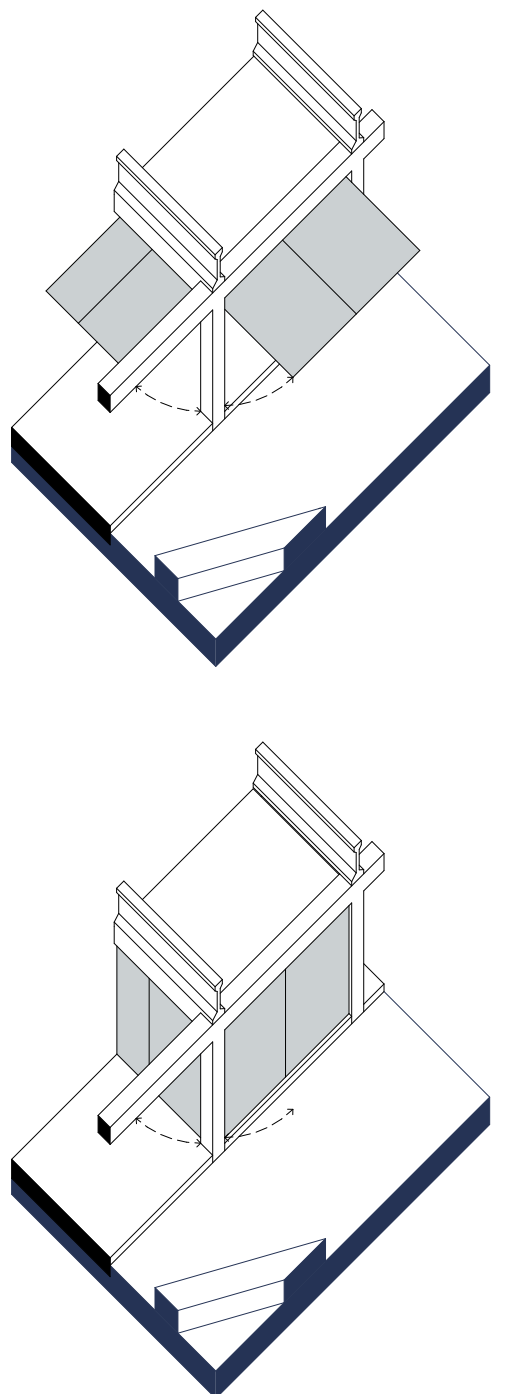
AXONOMETRIC 1:200



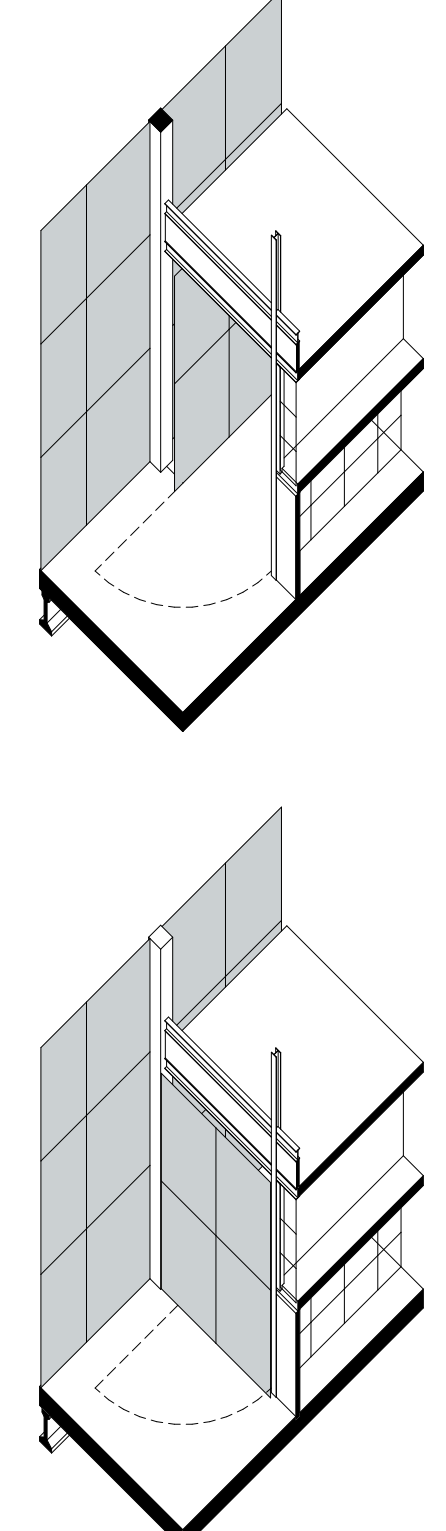
AXONOMETRIC 1:200

ADAPTION OF THE SLIDING DOOR

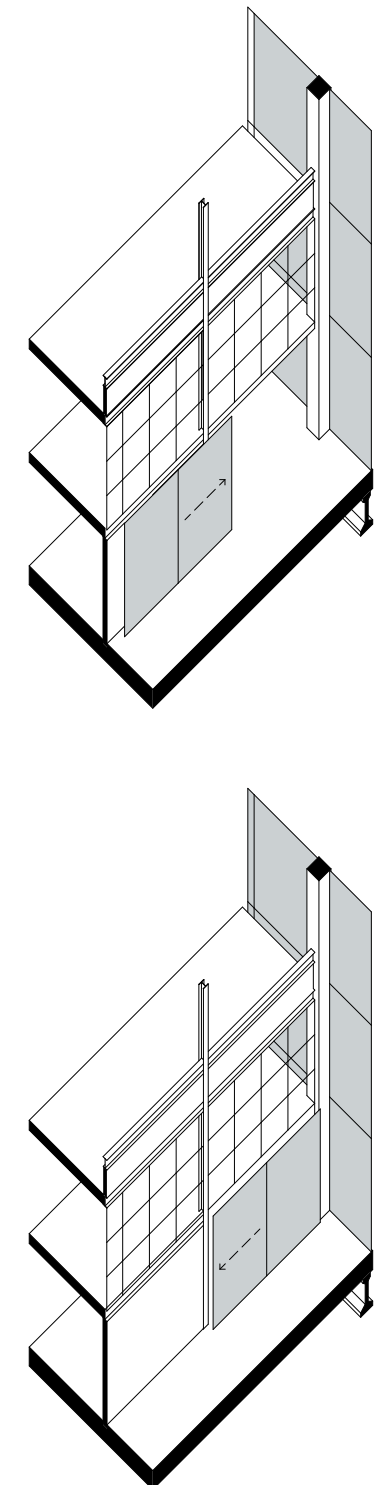
TILT-UP DOOR
 The tilt-up door transforms into a canopy for the pavilion when it is open, creating an additional transitional space and blurs the threshold between inside and outside.



PIVOT DOOR
 The pivot door can swing in both directions, creating a large and open transition into the theater space.



LOWER SLIDING DOOR
 The sliding door, which extends to the height of one floor, provides access to the storage area with a large opening.



SUN SCREENS
 The original sliding doors can be used as sliding shutters. This allows you to keep the sun out and prevent the building from overheating. An additional advantage is that the theater can be darkened.

