

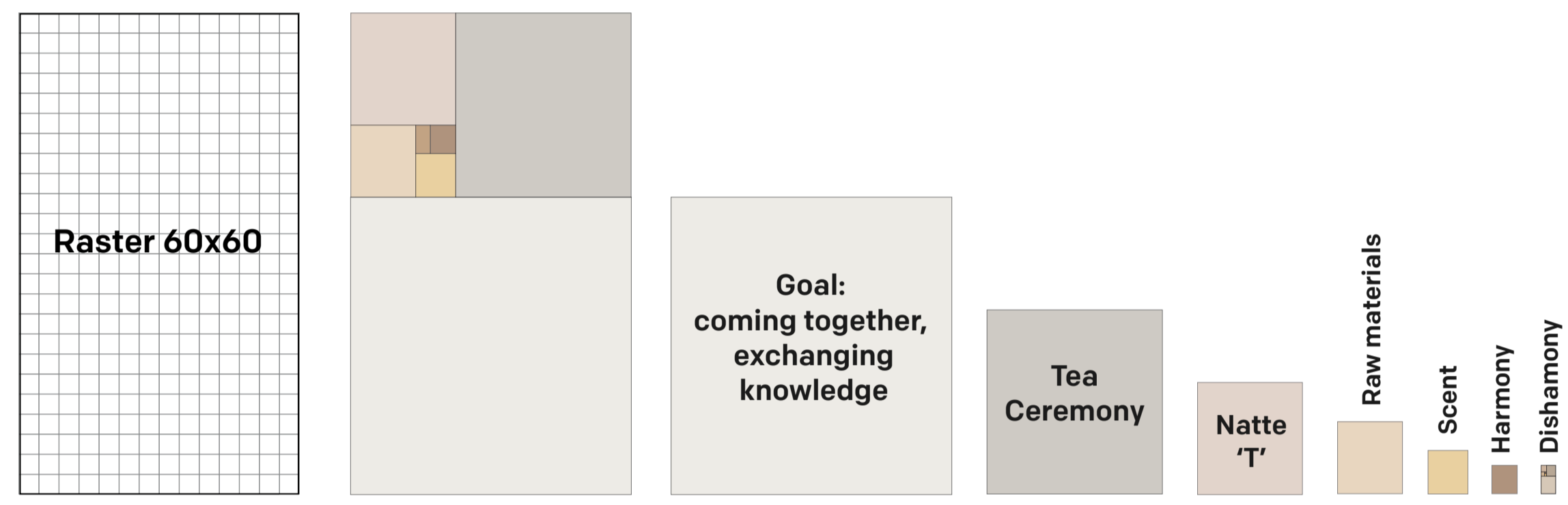
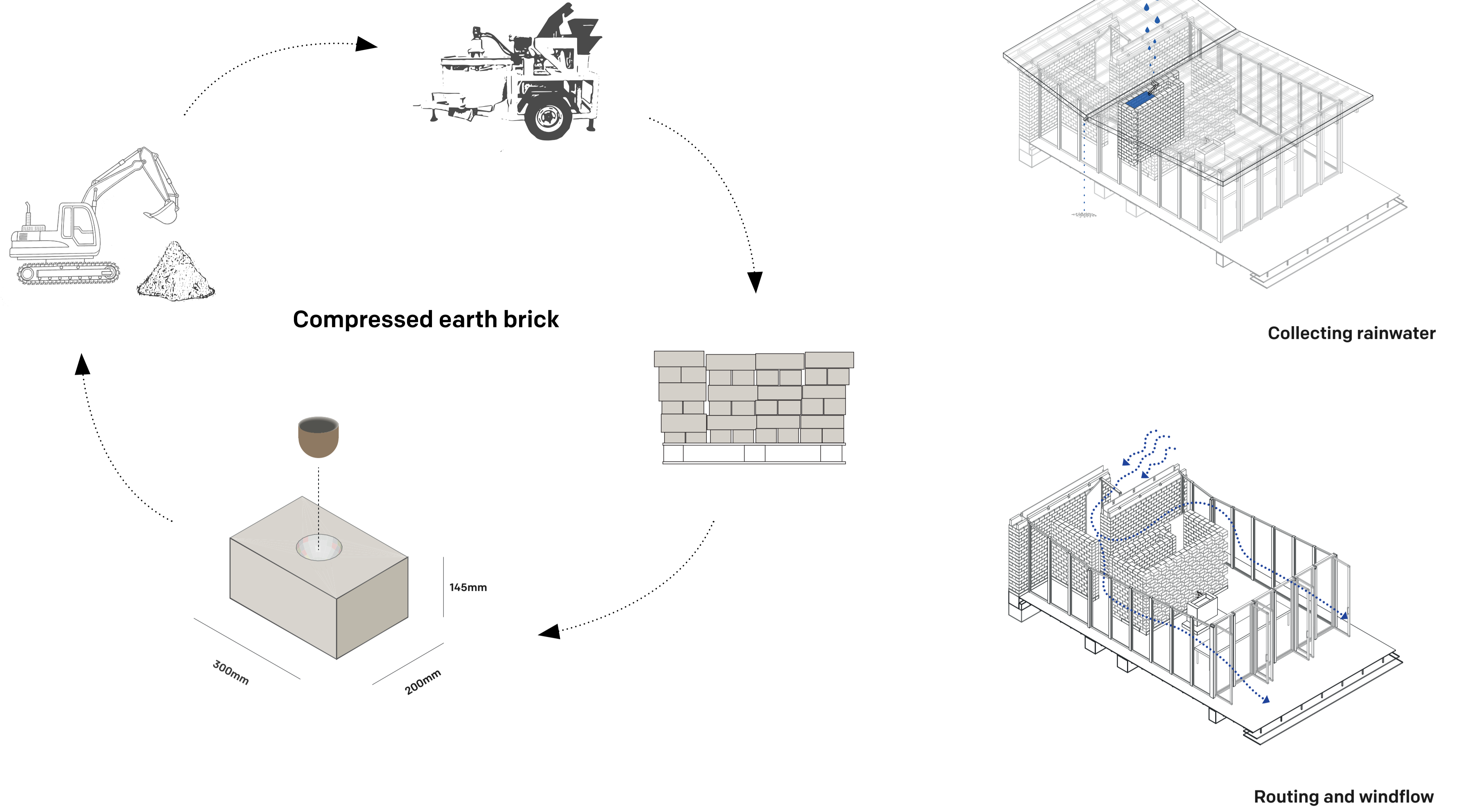
# Harmonic Tea House

Grounded Matter // Chanelle Hool

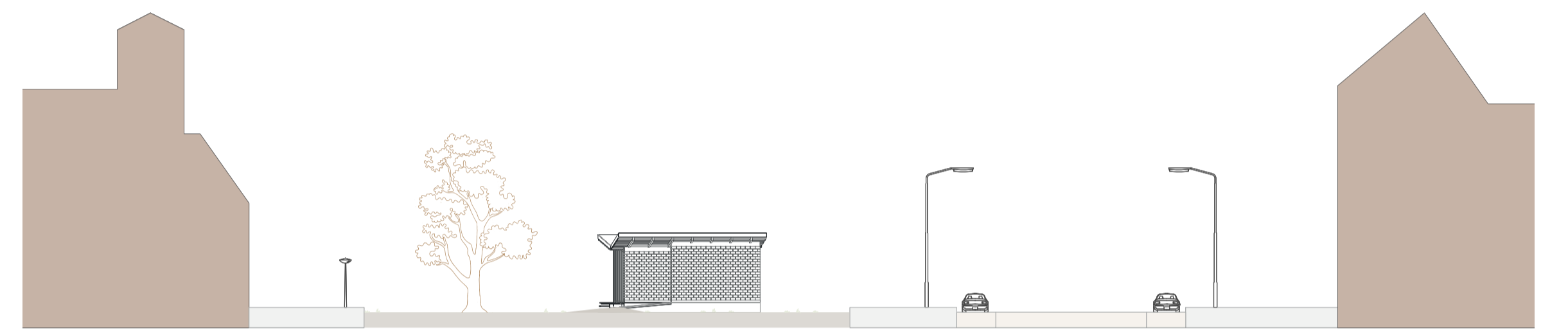
The ritual: As you walk towards the tea house, you are immediately struck by the inviting aroma of fragrant plants and flowers. The open, butterfly roof invites you to enter the building, where you are greeted by the serene and peaceful atmosphere created by the harmonious blend of natural materials, scent, and design. You are drawn towards the collection of tea cups displayed in a storage wall made of compressed earth bricks (CEB), where you can take a seat at the large table or head out to the terrace to enjoy a cup of tea and a conversation.

The teahouse has been designed with the cultural and environmental context of Rotterdam in mind, with raw materials such as clay, sand, and loam sourced locally to connect the building with its surroundings. The butterfly roof collects the rain water which can be used for flushing the toilet and the placement of the teahouse will align with the surrounding institutes to create a harmonious atmosphere for all.

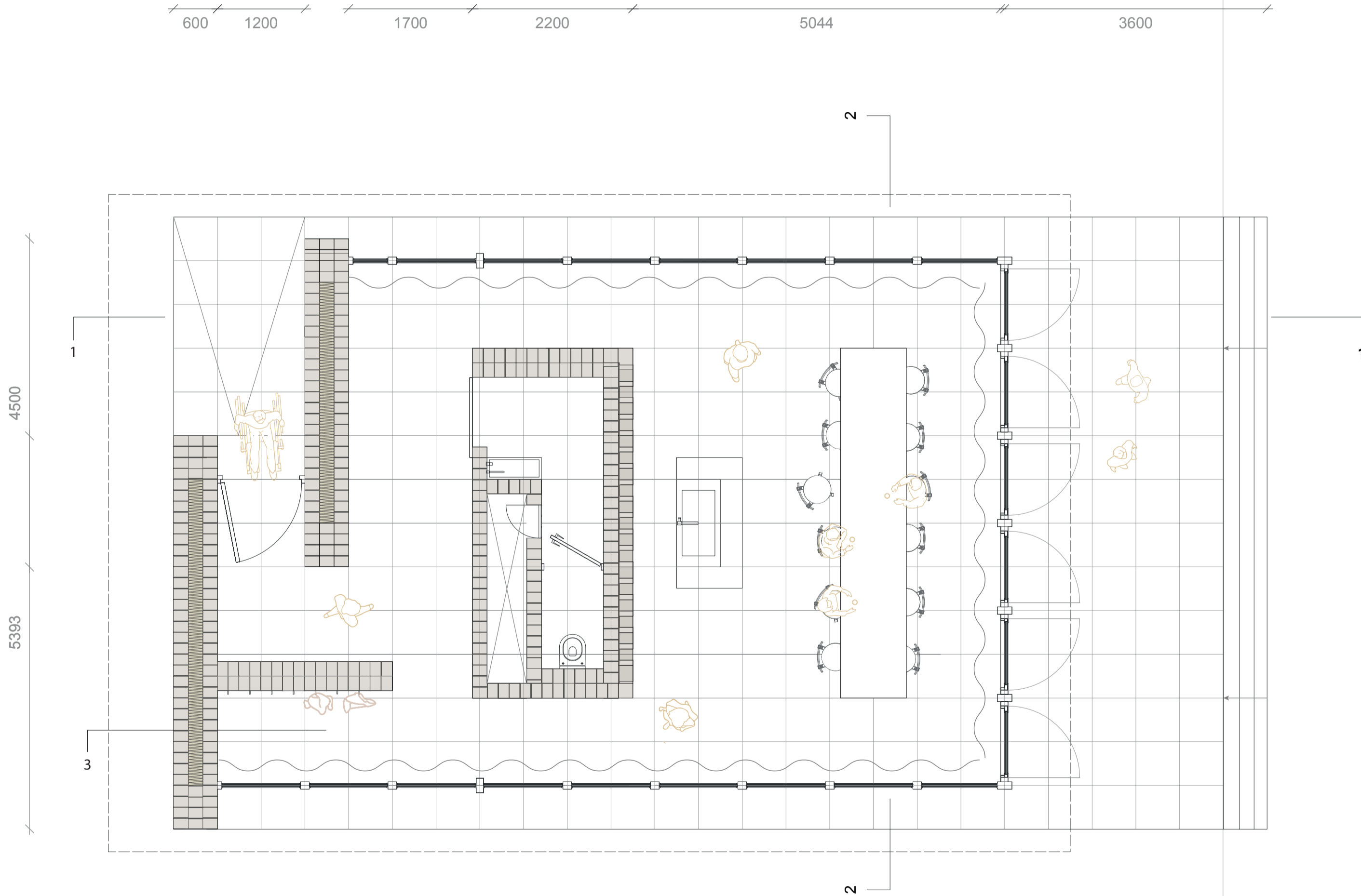
Step into the teahouse and enjoy a cup of tea or a conversation while taking in the inviting aroma of fragrant plants and flowers—all in harmonious connection with Rotterdam.



Concept diagram



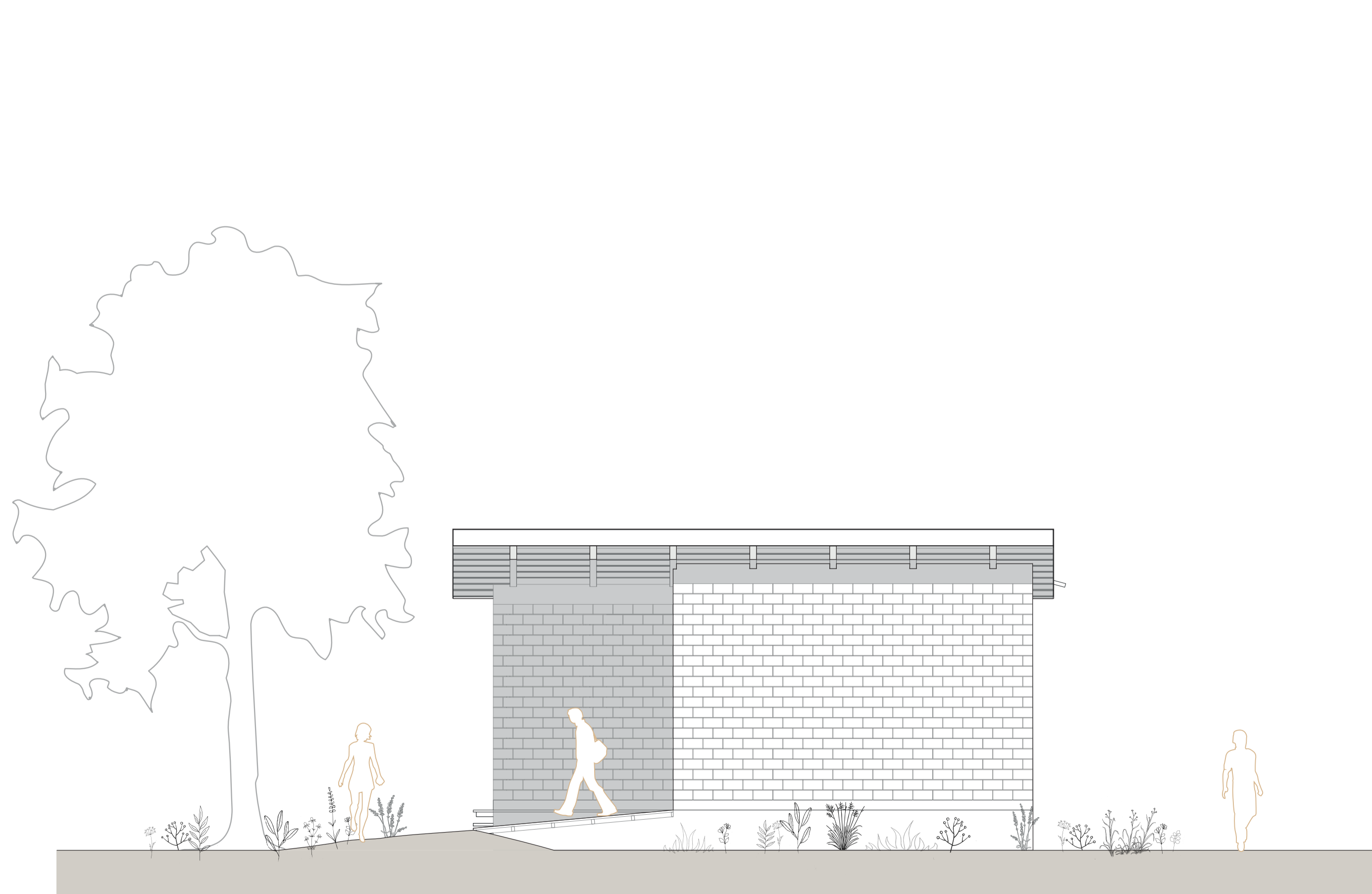
Site section



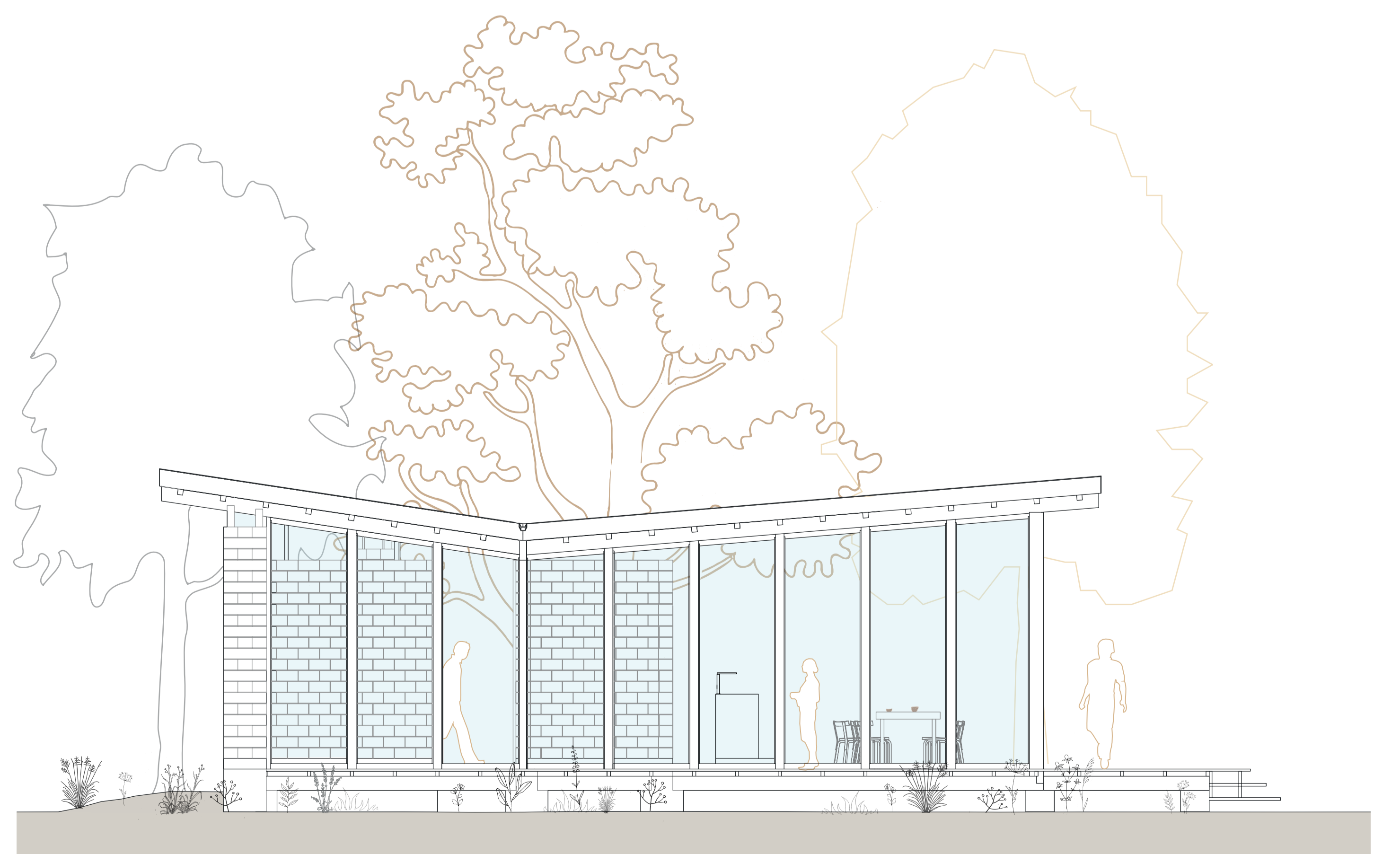
Floorplan 1:50



Site plan

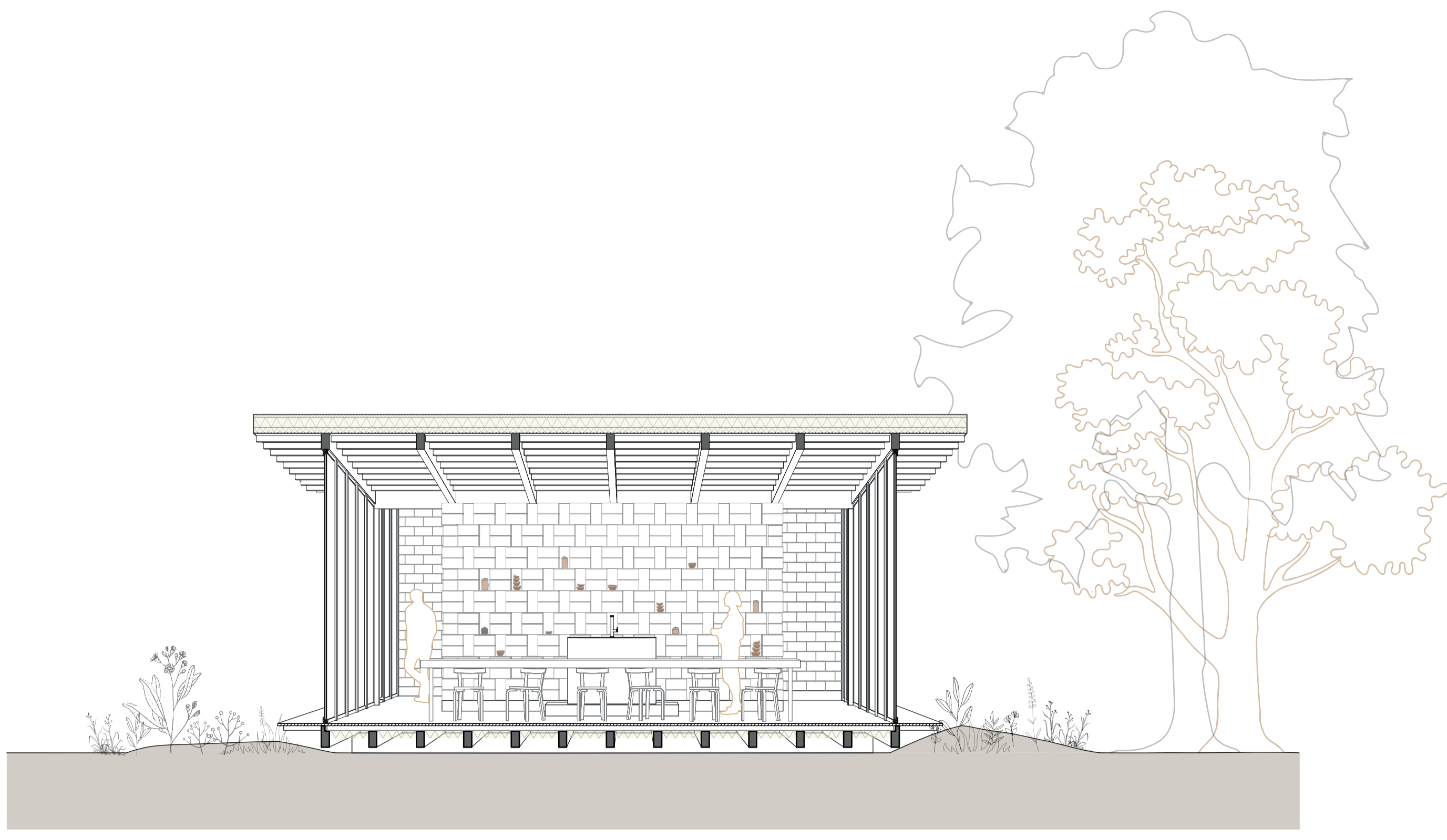


Front elevation

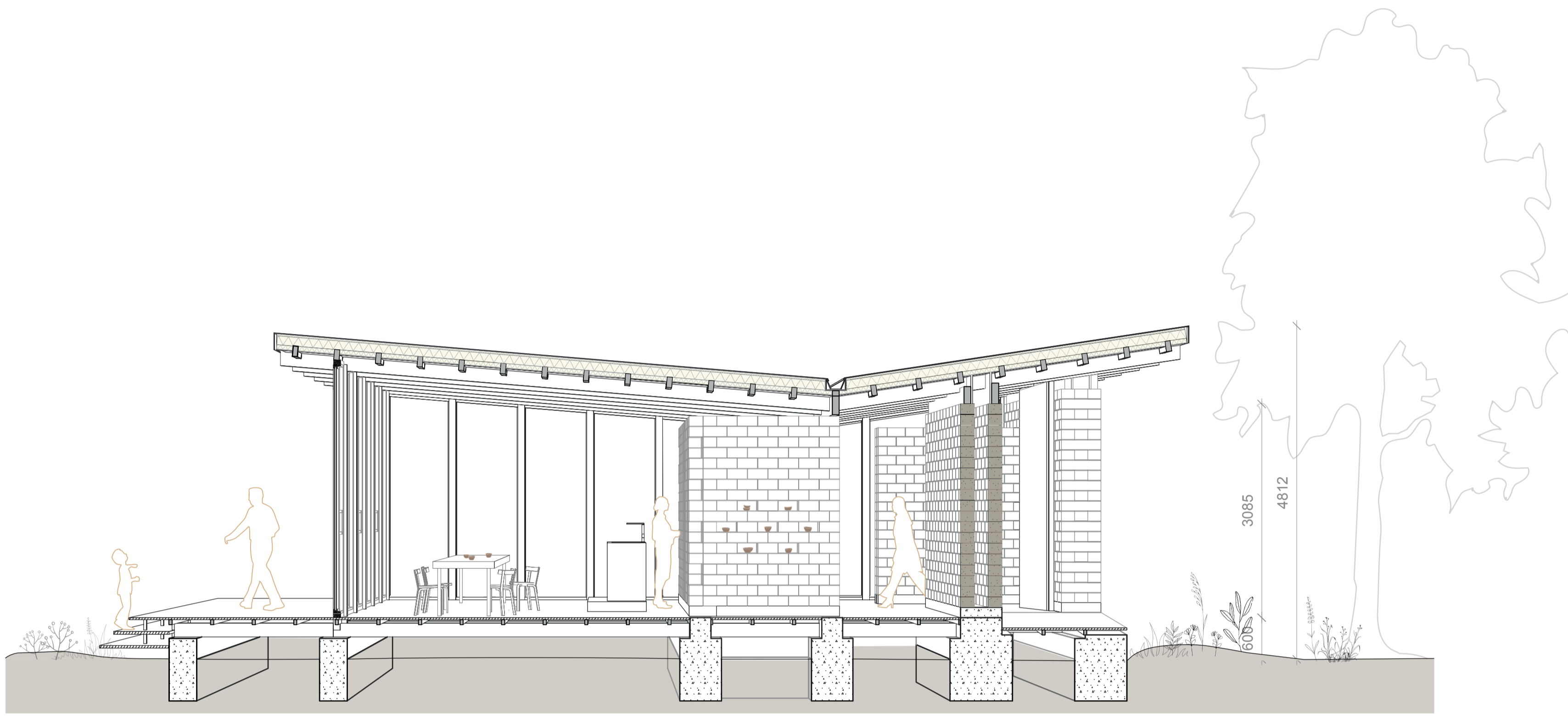


Right elevation

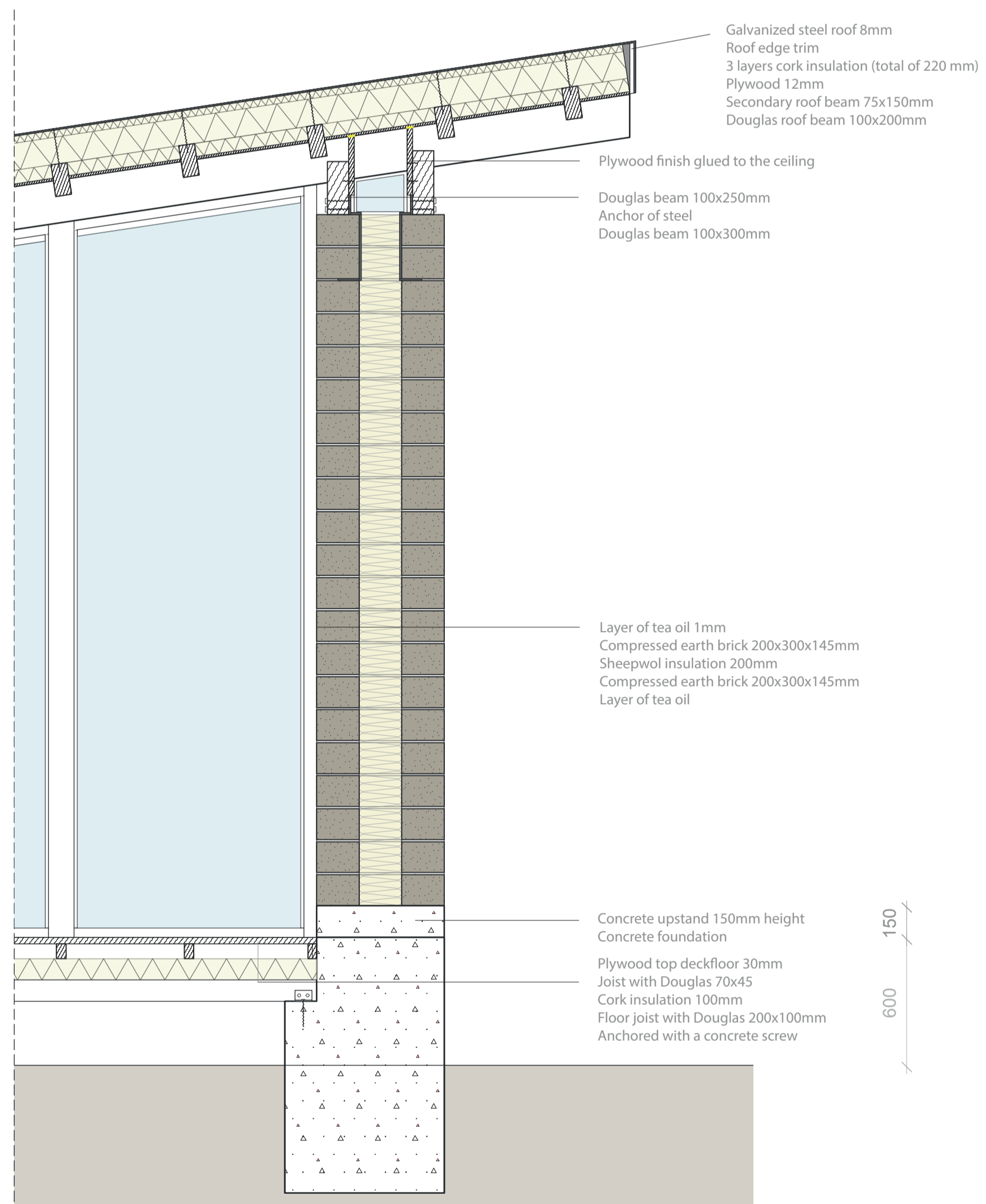




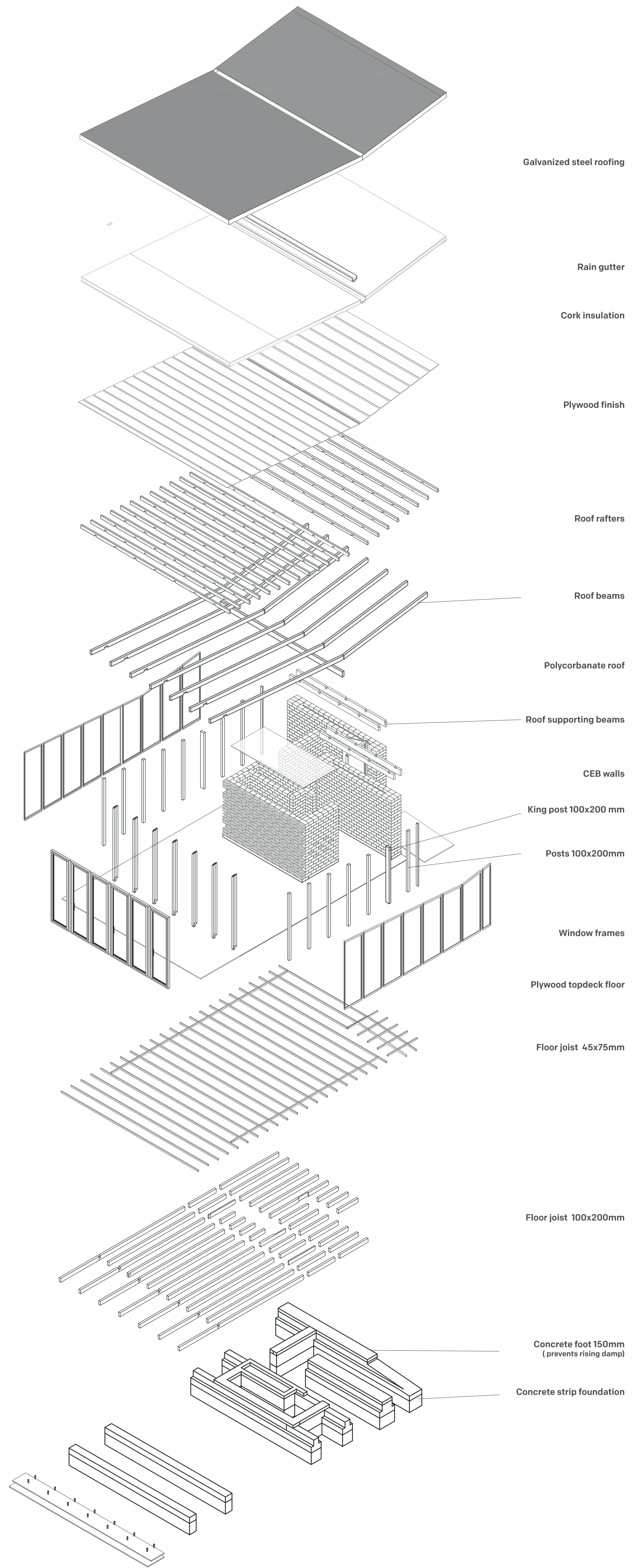
Section 1:50



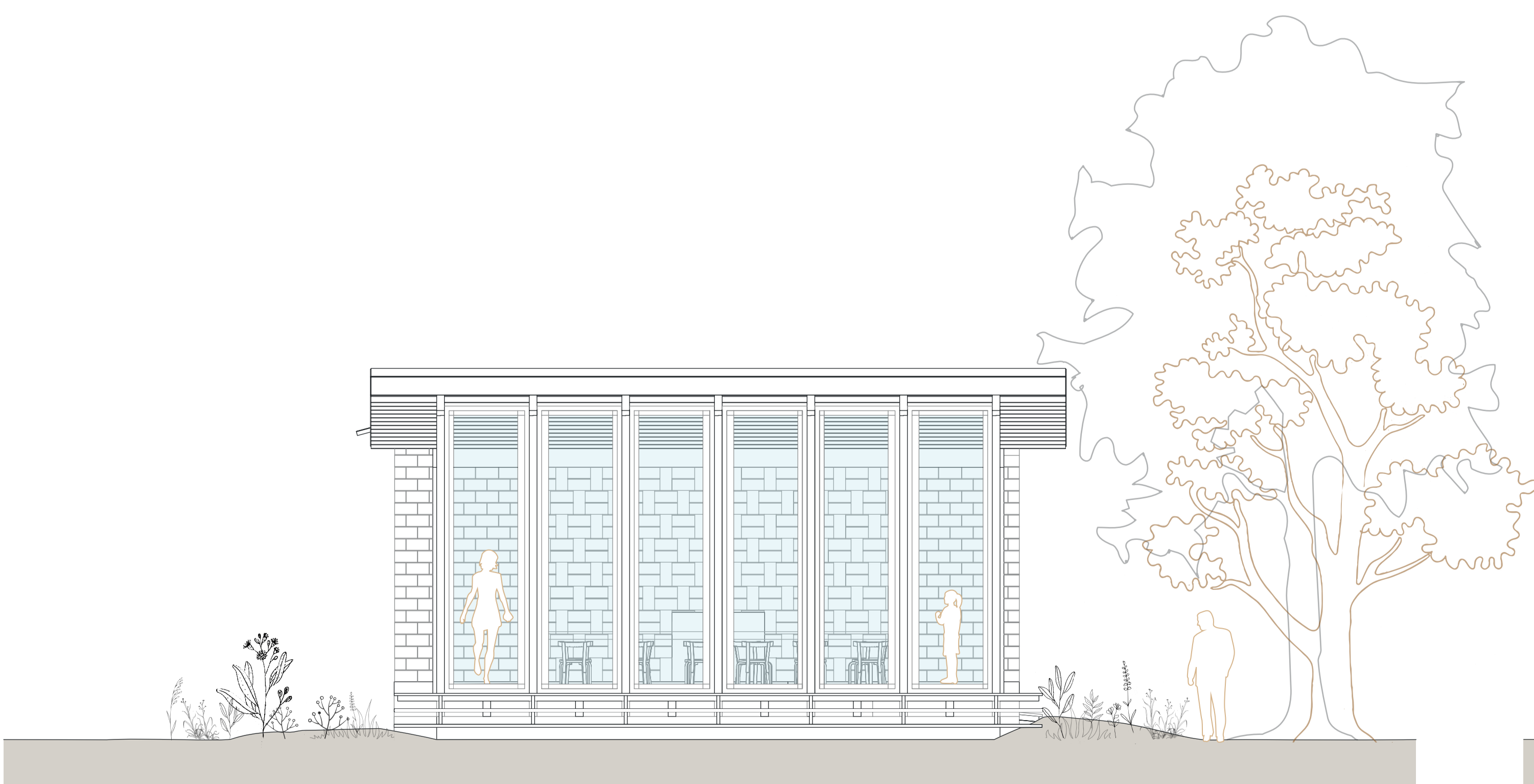
Section 1:50



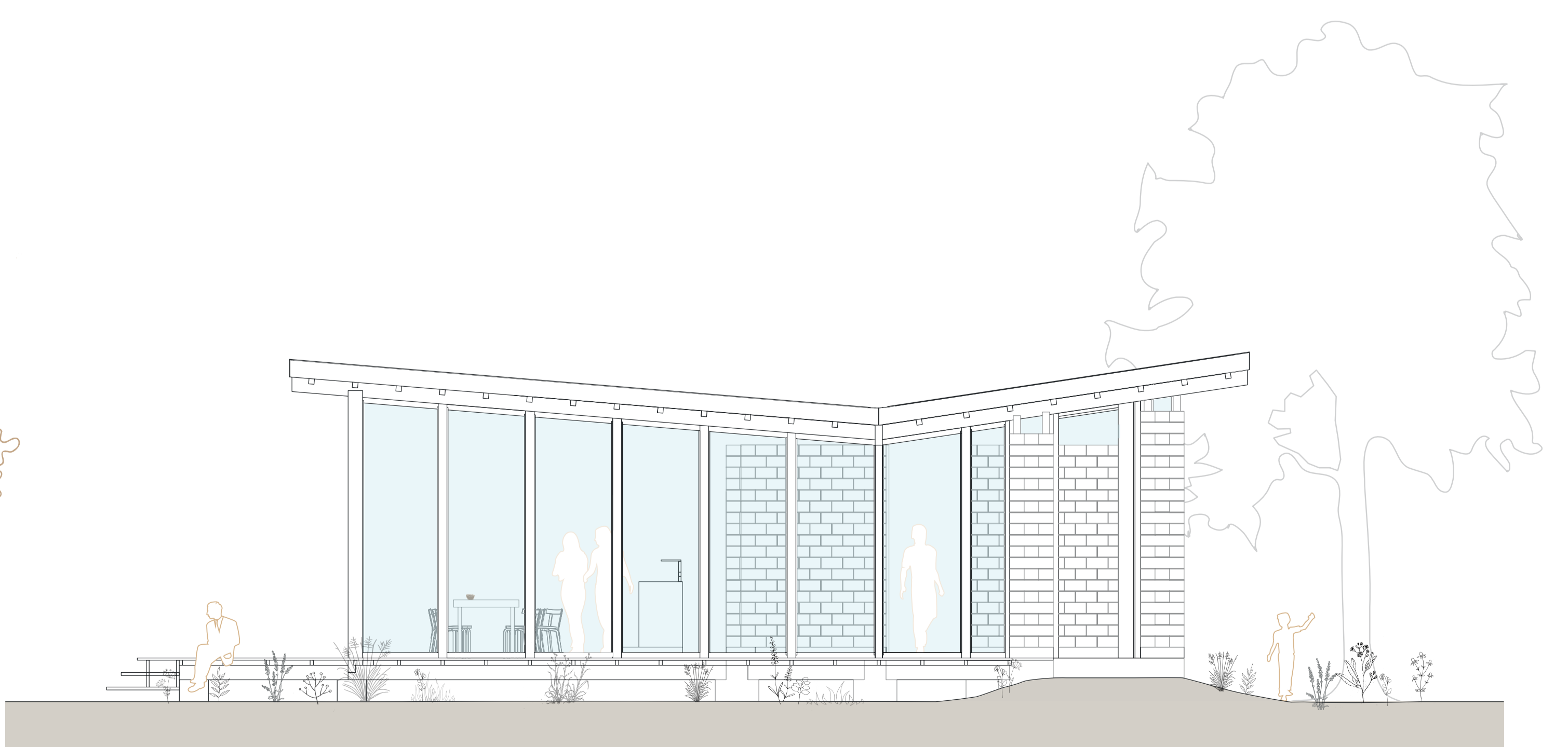
Detail 1:20



Axonometric



Rear elevation



Left elevation