

4

HEARTHS OF LOVEN

Loven, currently an industrial area with a cluster of housing in its centre, is characterized by introverted industrial buildings situated on privatized and fenced-off plots.

The space between these buildings is predominantly used for storage, parking or logistics, resulting in inaccessible building blocks.

However, by reimagining the spaces between the blocks and the industries, the closed blocks can be unlocked and the space can be transformed into attractive courtyards and new passage-ways.

Each block has a different identity and different motives for programming. The plan aims to activate the courtyard and passage-ways with new programme that suits the unique identities of each block. The transformation will breathe new life into Loven, making it a vibrant neighbourhood.

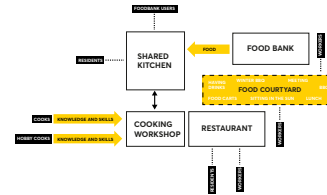


URBAN FABRIC

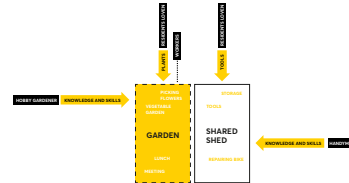
PRIVATIZED BUILDING BLOCKS

NEW PASSAGE-WAYS AND COURTYARDS

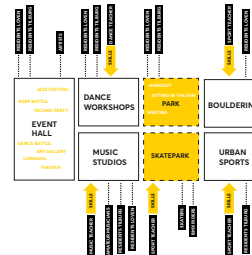
FOOD COURTYARD



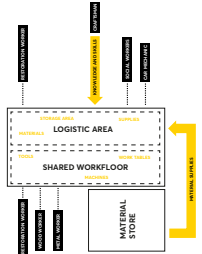
THE GARDEN

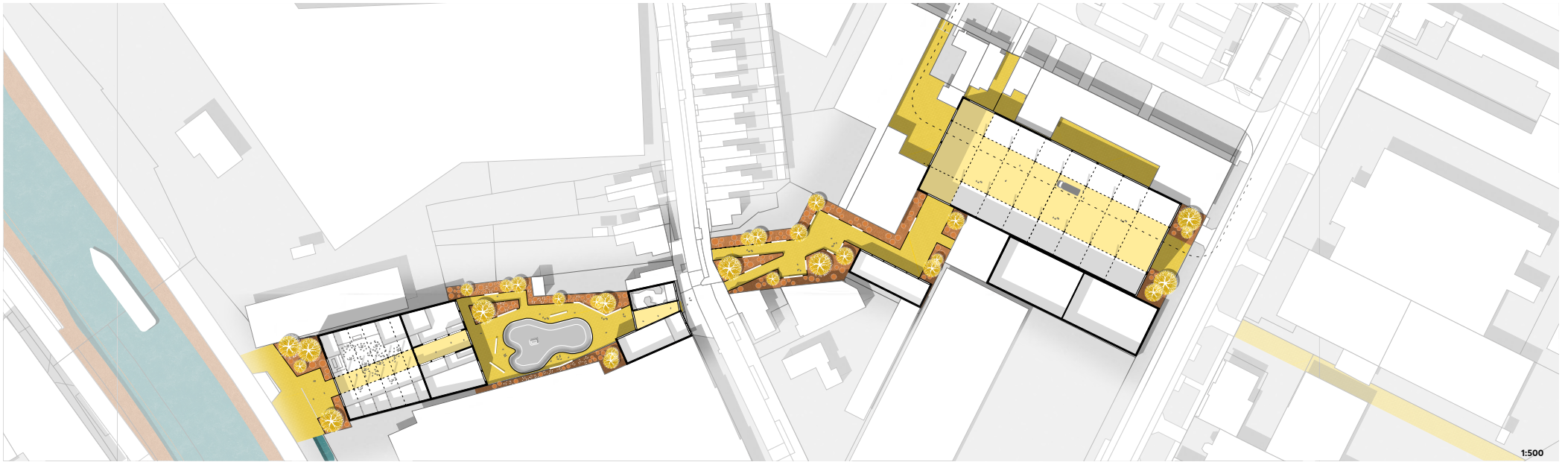


SKATE PARK AND MUSIC HALL



INDUSTRIAL PASSAGE





1:200
OWEN SIMONS
1066780