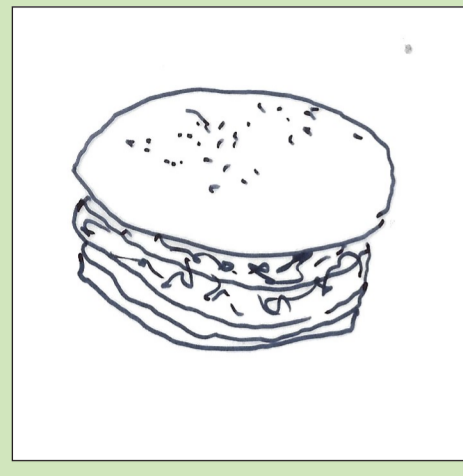




"van grond tot mond"

een zoektocht naar de landschappelijke elementen voor ons voedsel



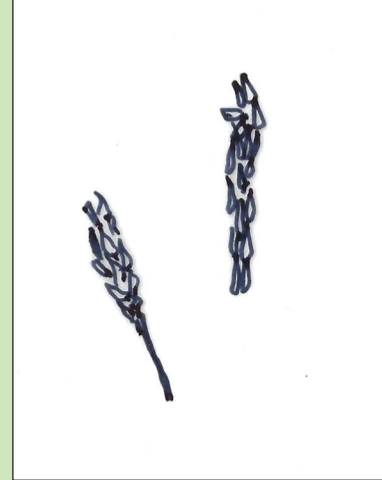
Bietenburger



Rode Biet



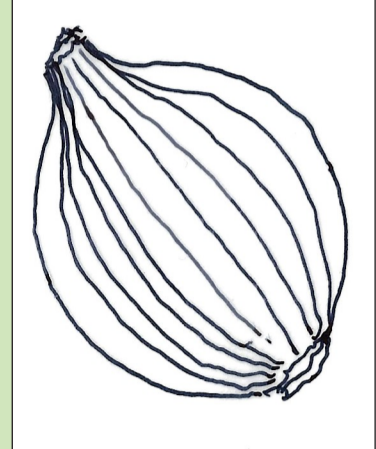
Ei



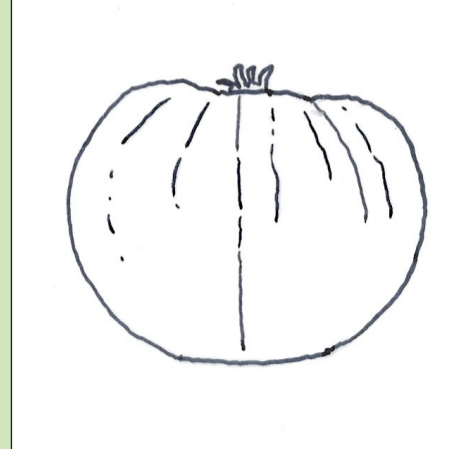
Haver



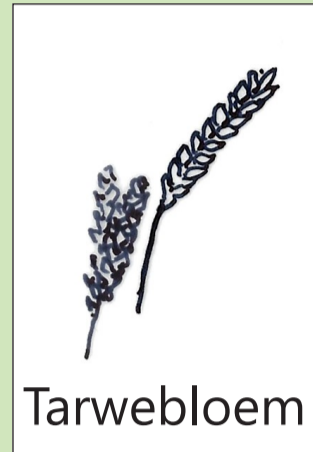
Bietenblad



Uij



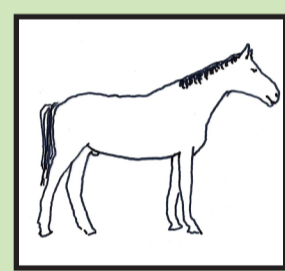
Tomaat



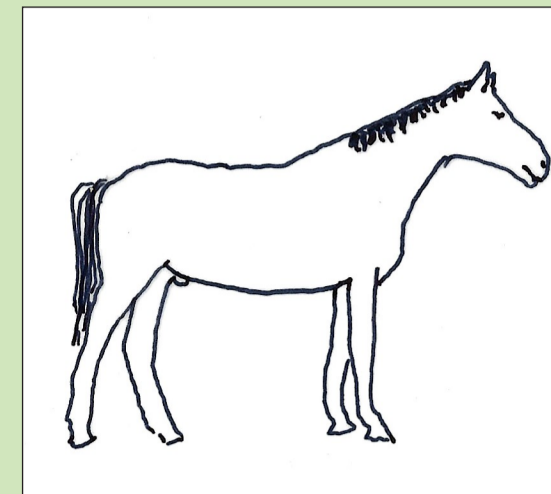
Tarwebloem



wisselteelt



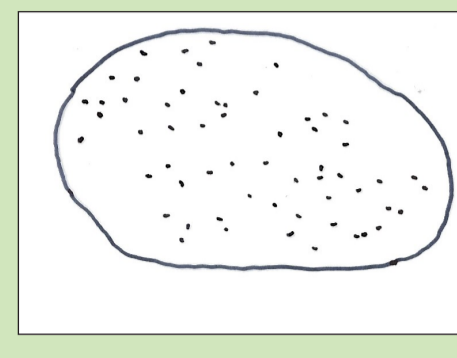
opt-in



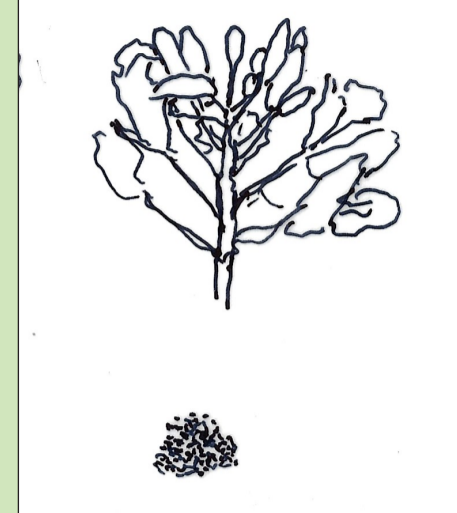
Paardenburger



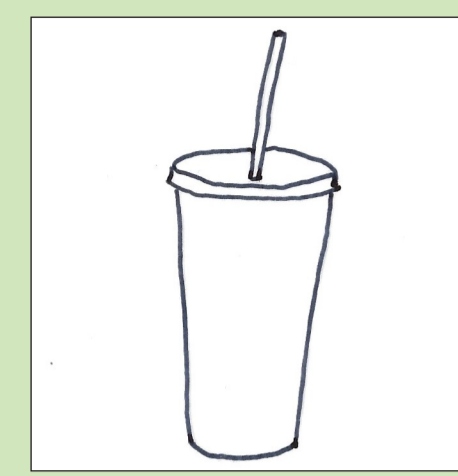
Frites



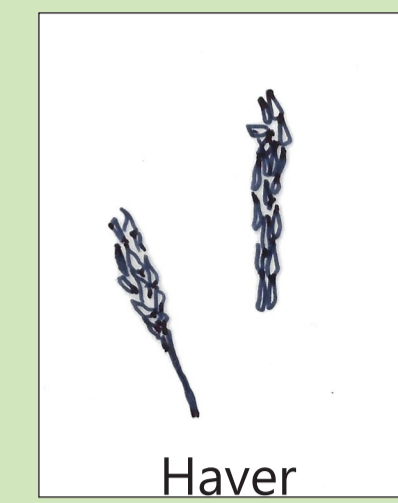
Aardappel



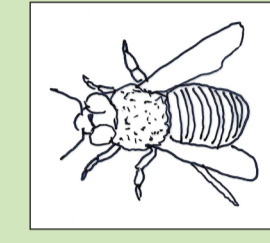
Koolzaadolie



Havermilkshake

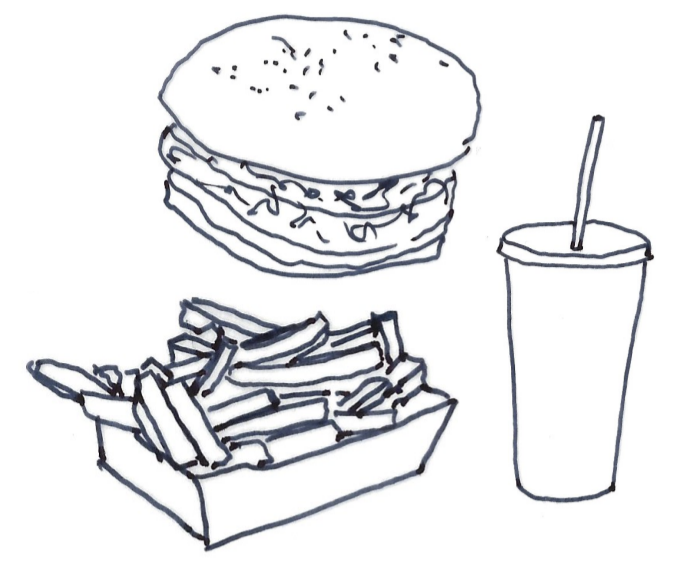


Haver



Honing

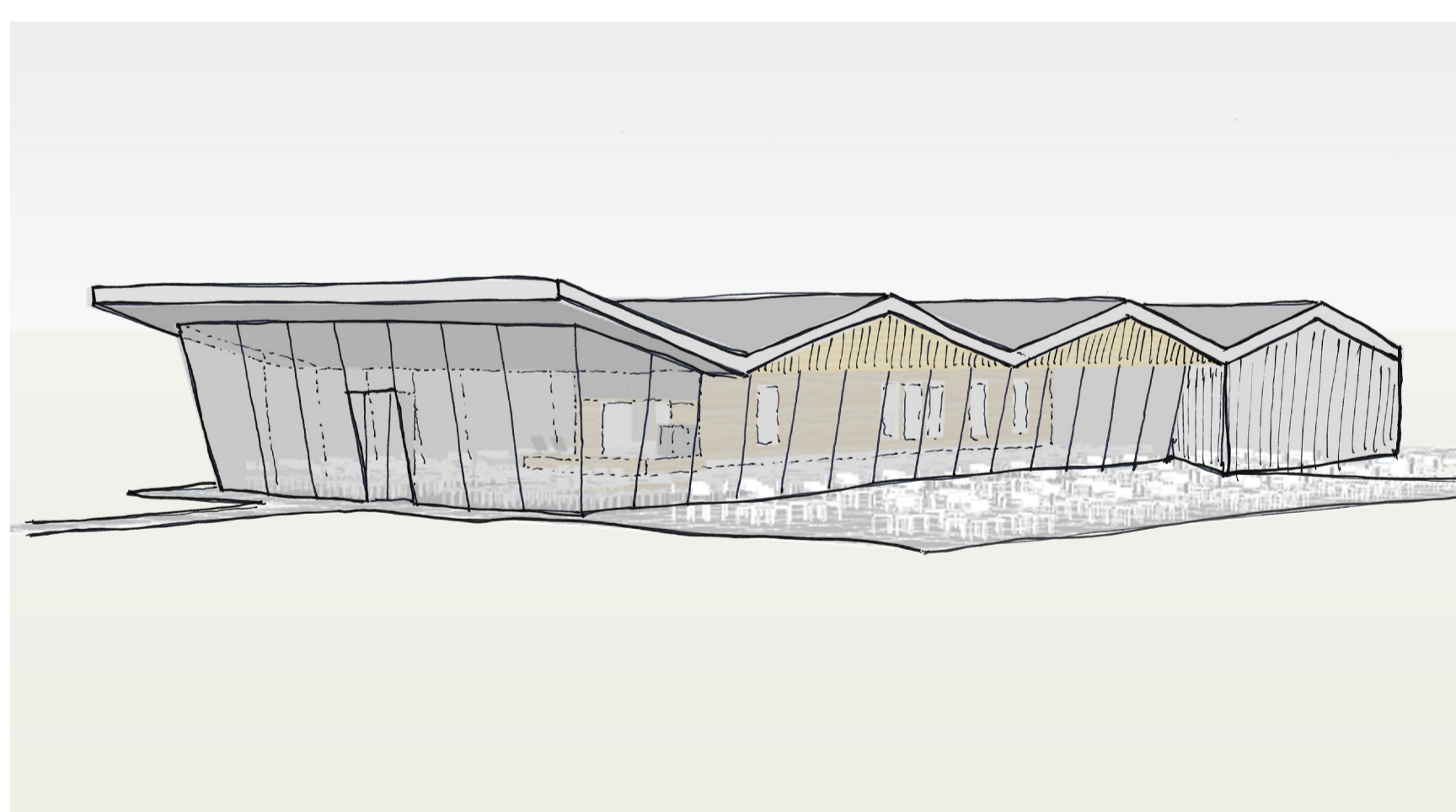
MENU



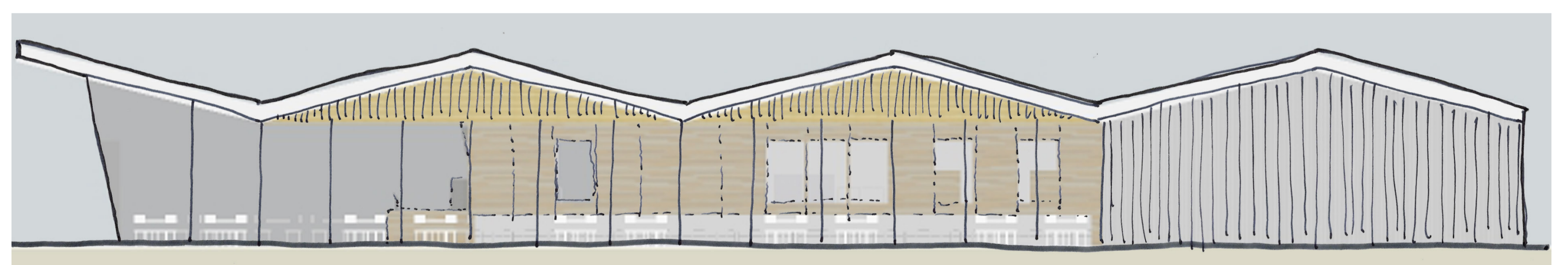
1:2.000

"build back better"

van een onhoudbare situatie voor beiden, naar een nieuw toekomstperspectief

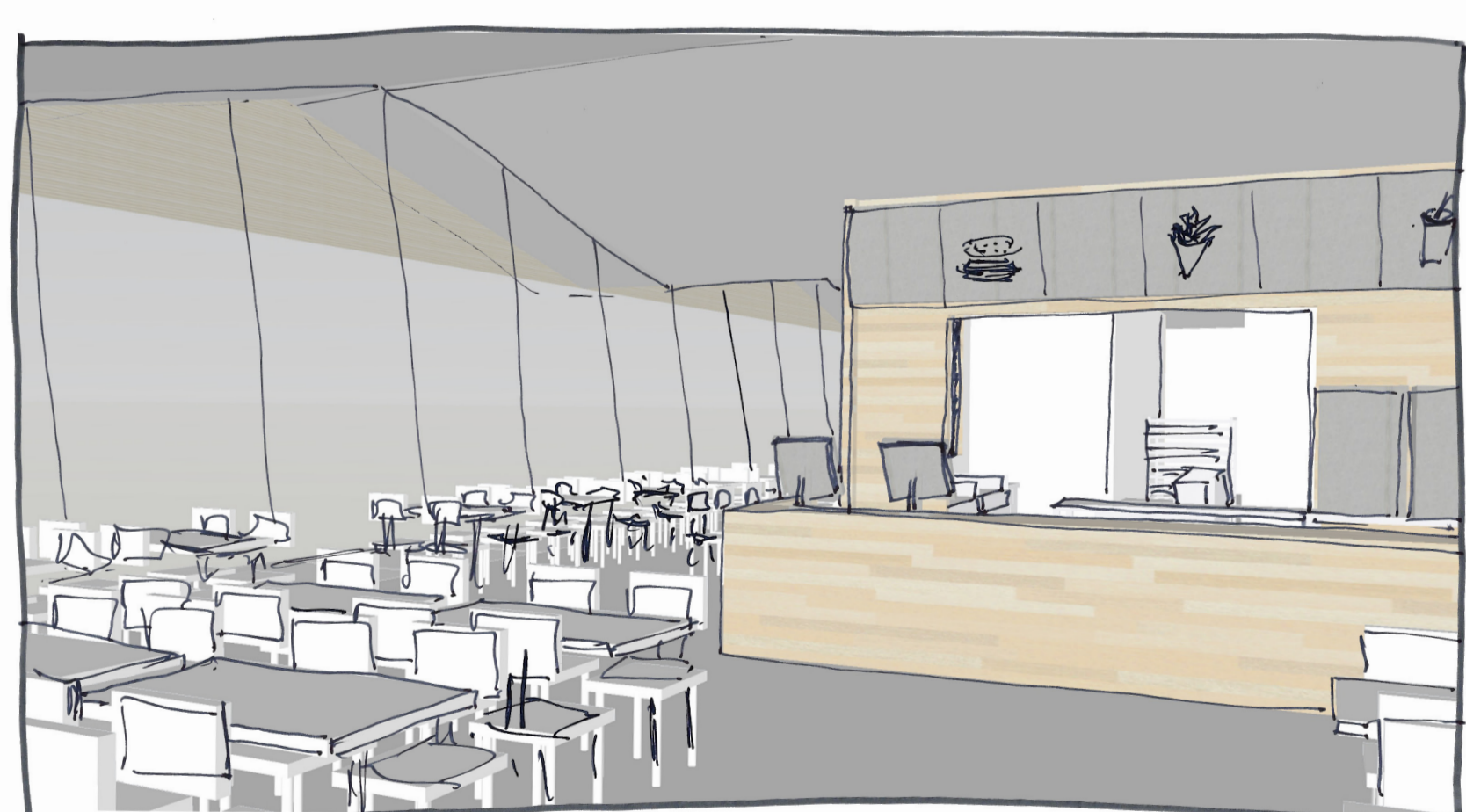


Restaurant - entree

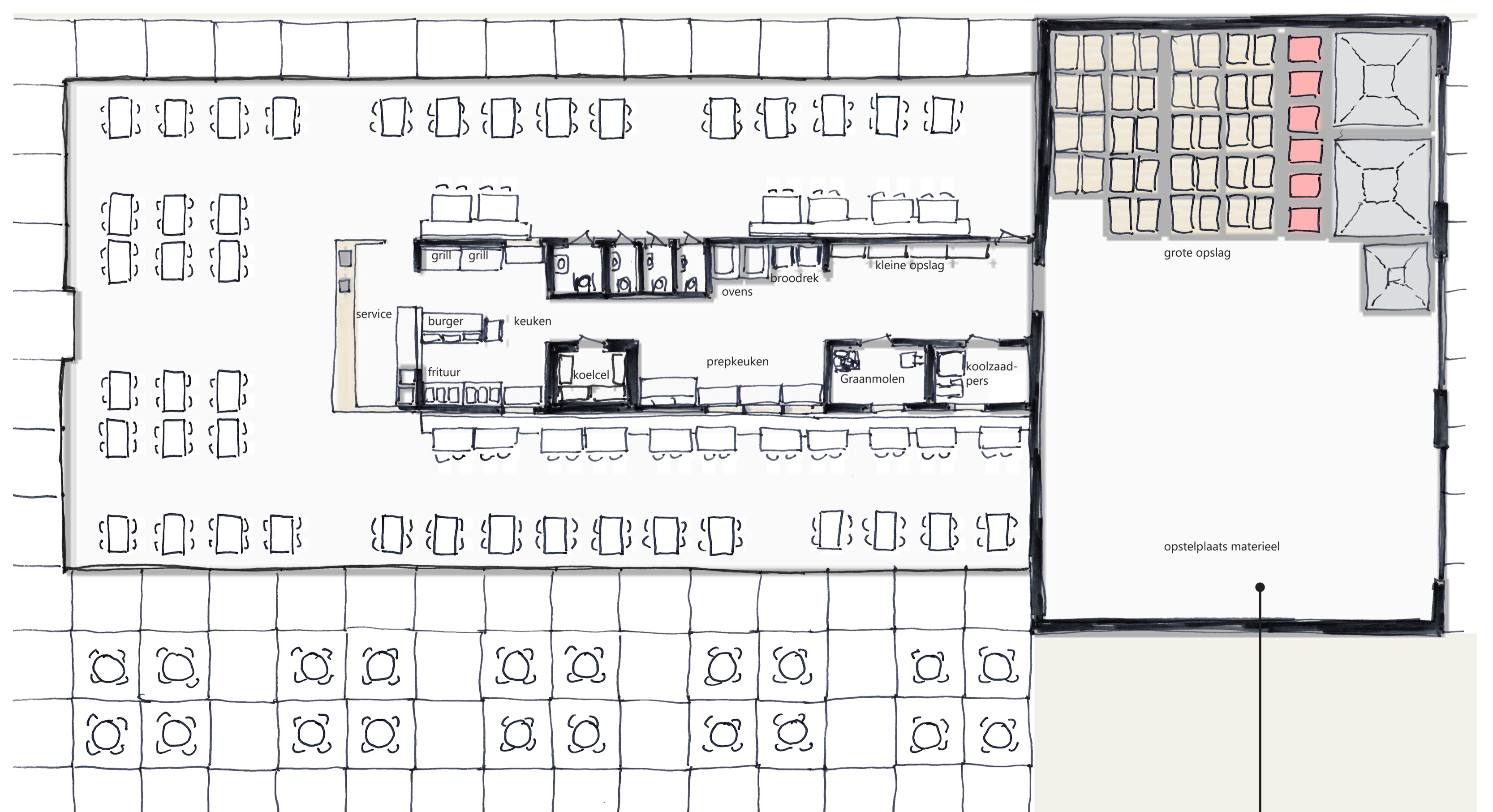


gevel

1:100



Restaurant - bestelbalie



Plattegrond

1:100

