



situation plan  
scale 1:500



situation section  
scale 1:200

# Delfhavens Temple

Arvid Schoots  
Grounded Matter - Rotterdam Academy of Building Arts  
Estelle Barriol & Sarah van der Giesen

There is a lot of activity around the field in front of the academy and theatre school: students chatting, cars passing by and residents of the Coolhaven island passing by on their way to the tram.

In the centre of this turbulent and open space there is a place to sit down, framing the sights of visitors and passengers. This place is made of stone, just like the rest of the buildings on the island, but this stone is different. It comes from the ground, just like the new views are full of what was already existing but making a new place for future connections between people who were already there.

Most of the materials are coming from local sources, like the tiles for the slab, these can be collected by the residents from their gardens or street pavement. The compressed earth blocks will be made on site, the roof construction will be prefabricated in a production hall, ready for assembling.



sourcing map

The strong framing of the context creating new sightlines and creating an inviting, open public space.

reference Battery Park pavilion in Rockefeller Park, New York, USA by Demetri Porphyrios

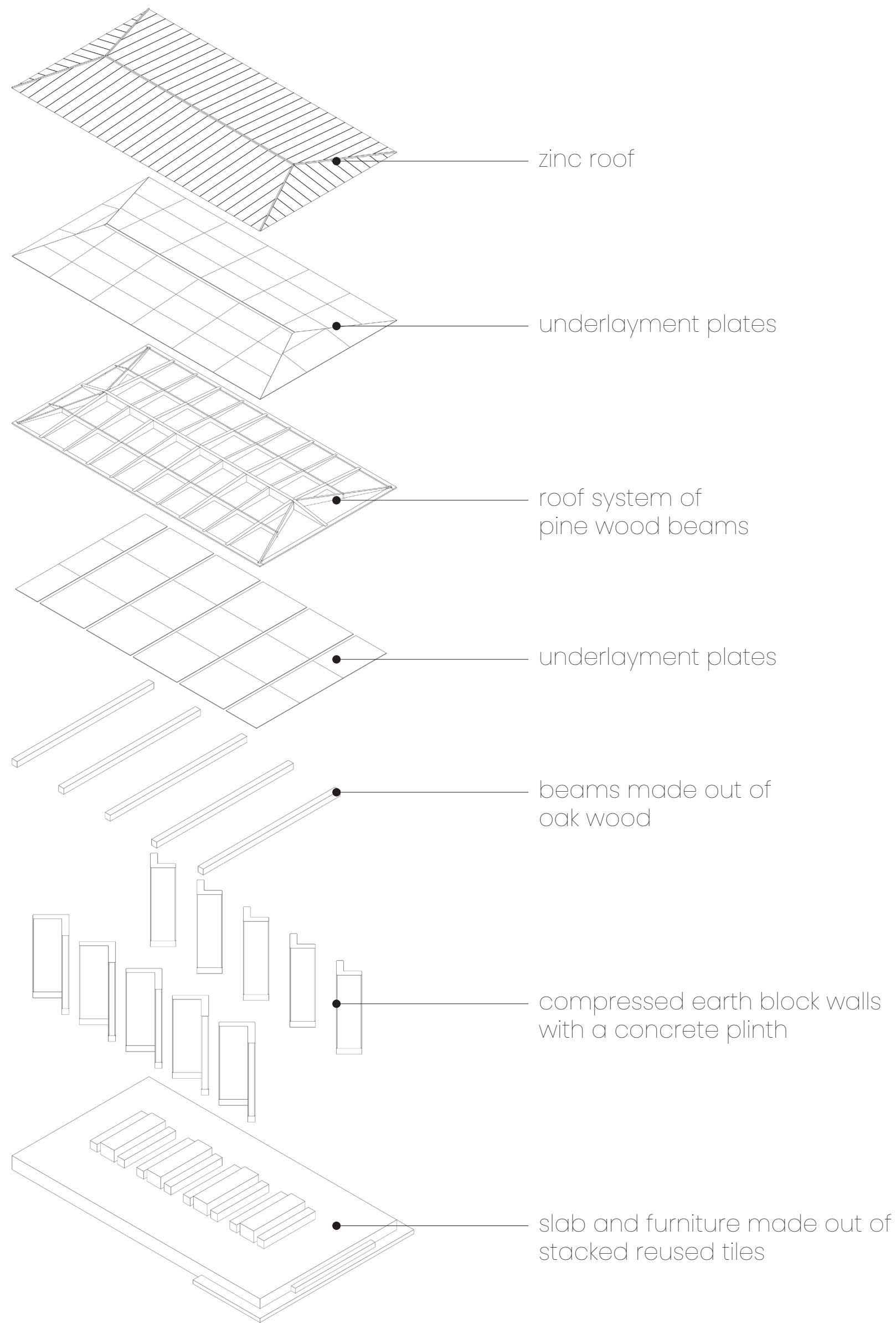


The reuse of materials that also open up the soil on other places for plants to grow. 'What's not to love?'

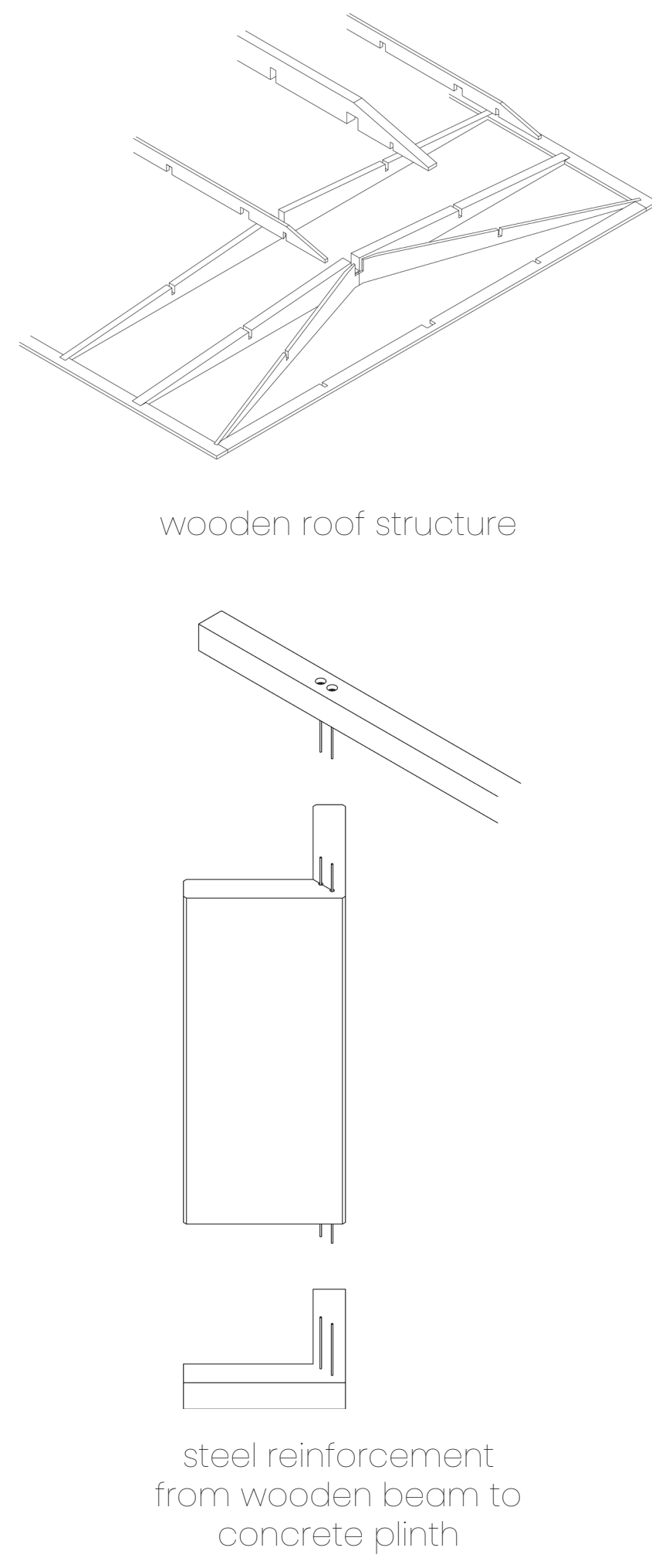
reference Ecolathedraal in Heerveen, Nederland by Louis Le Roy



references



exploded view and axonometric connections  
construction elements

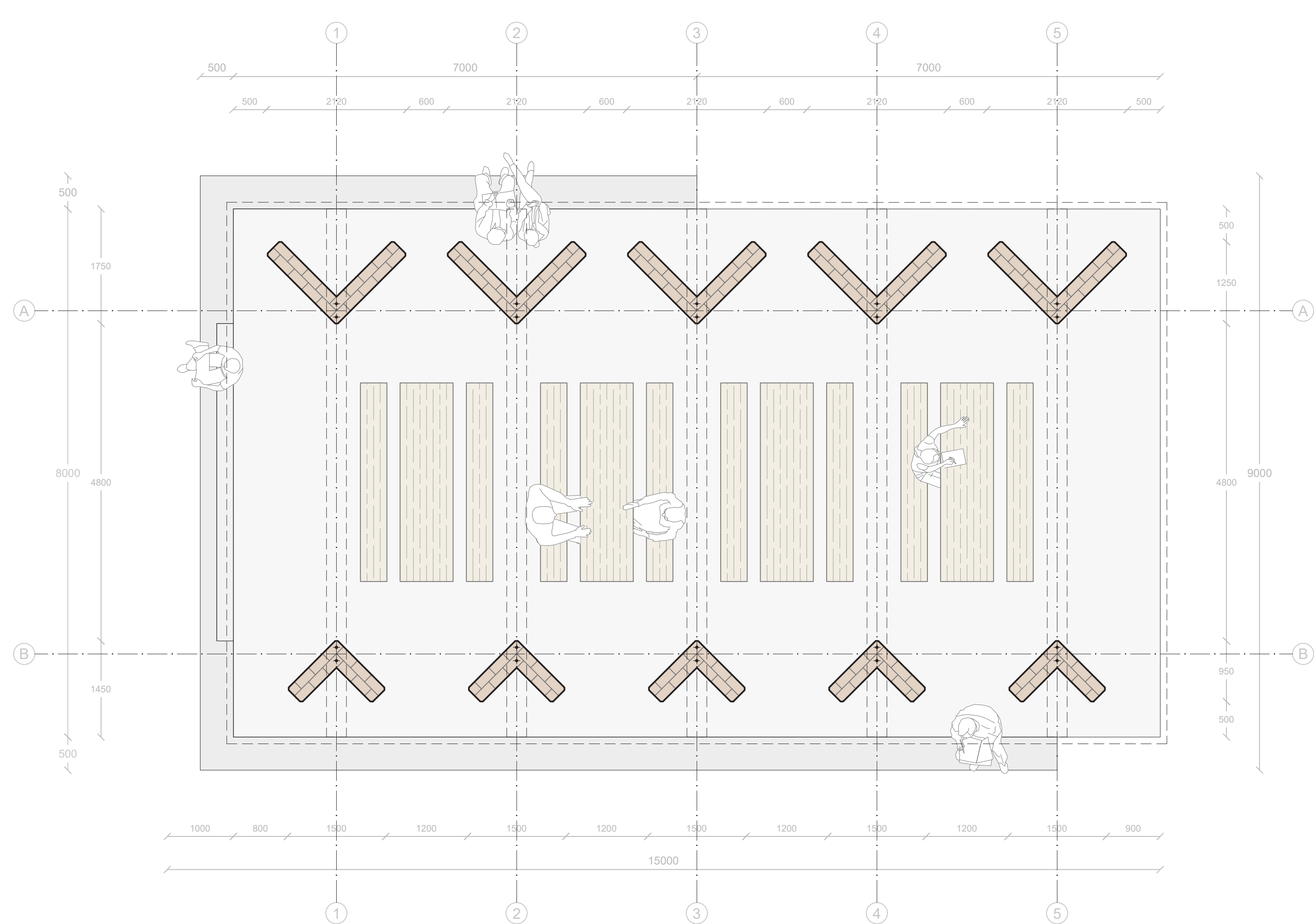


situation plan  
scale 1:200

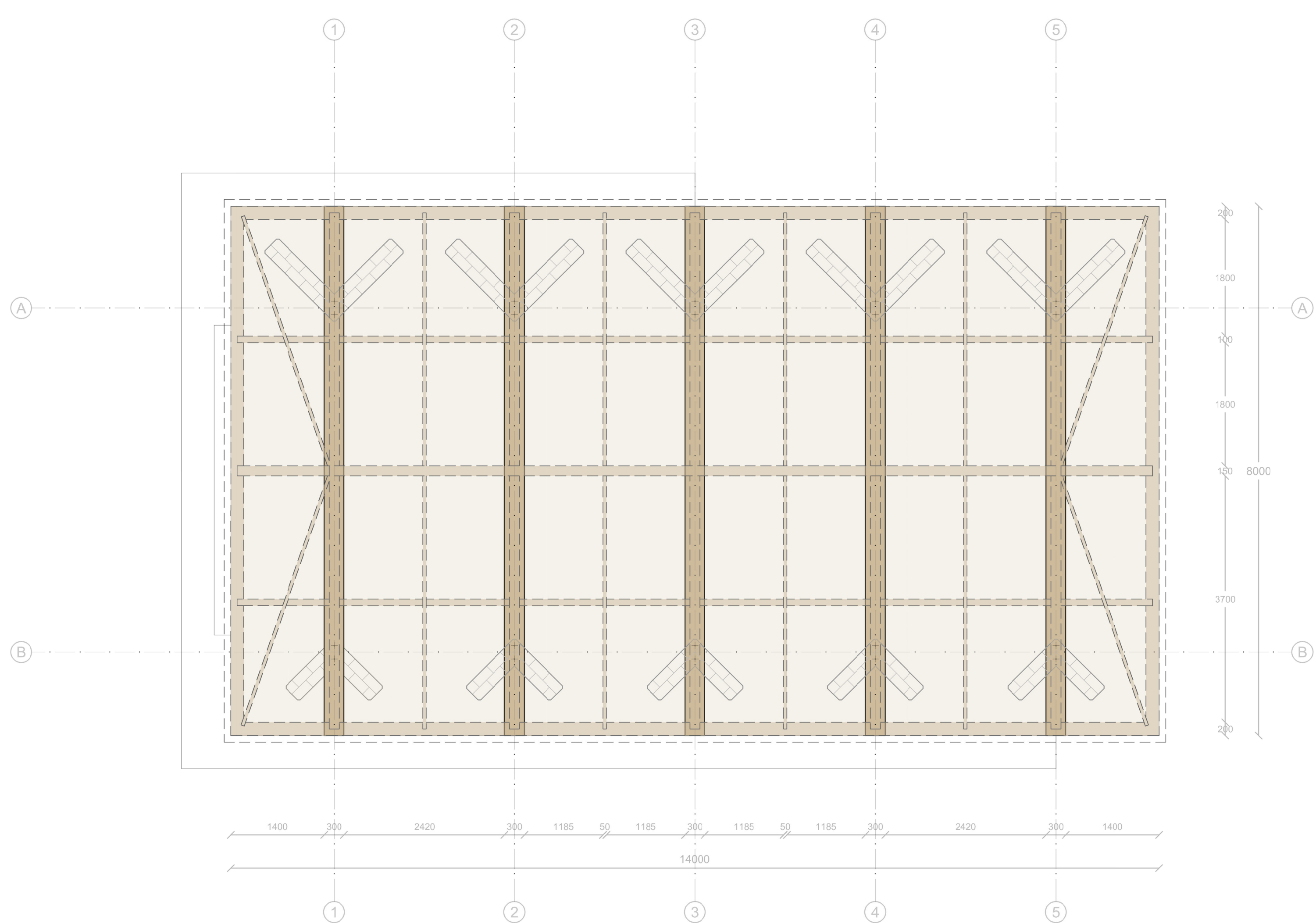


collage artist impression

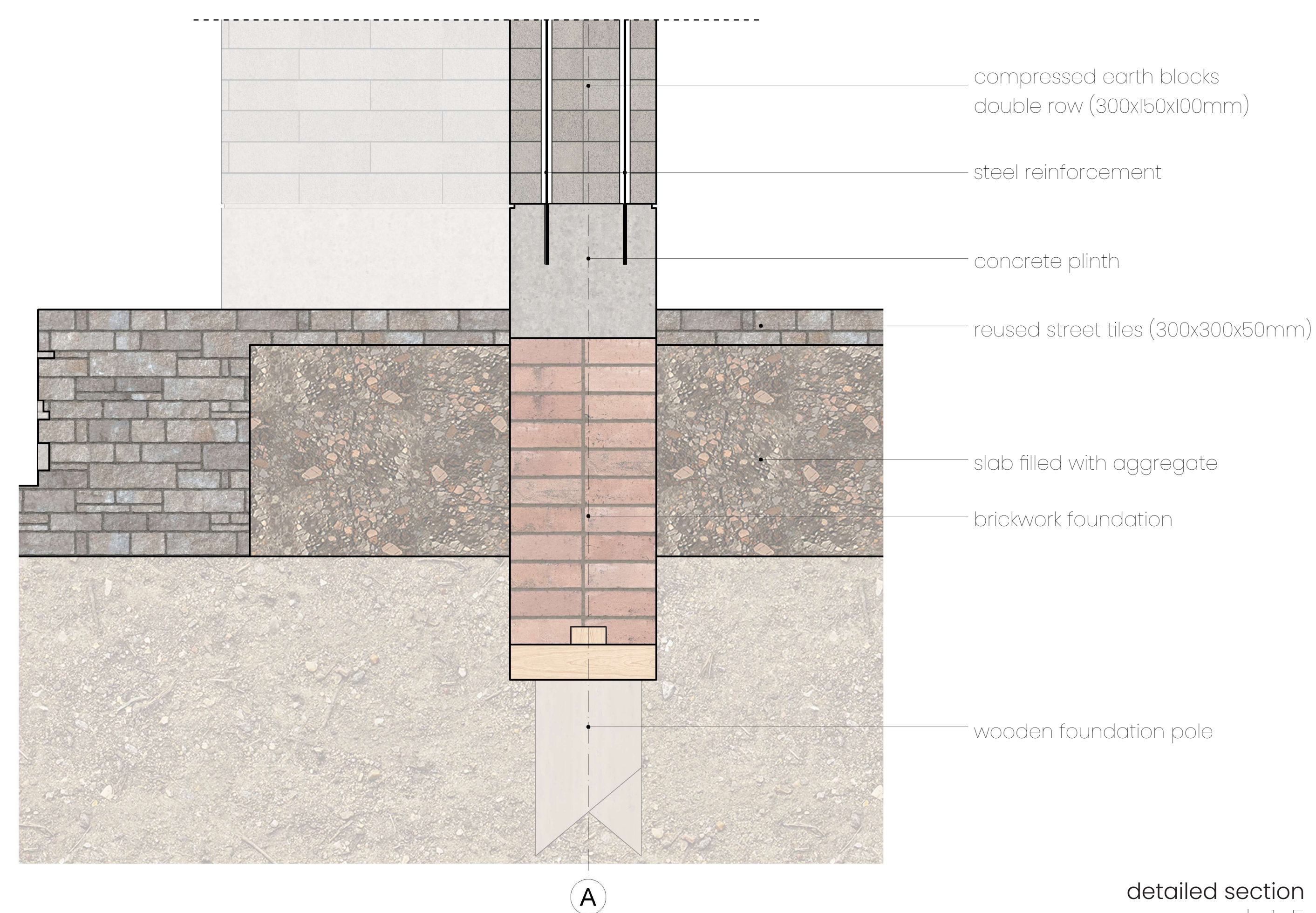
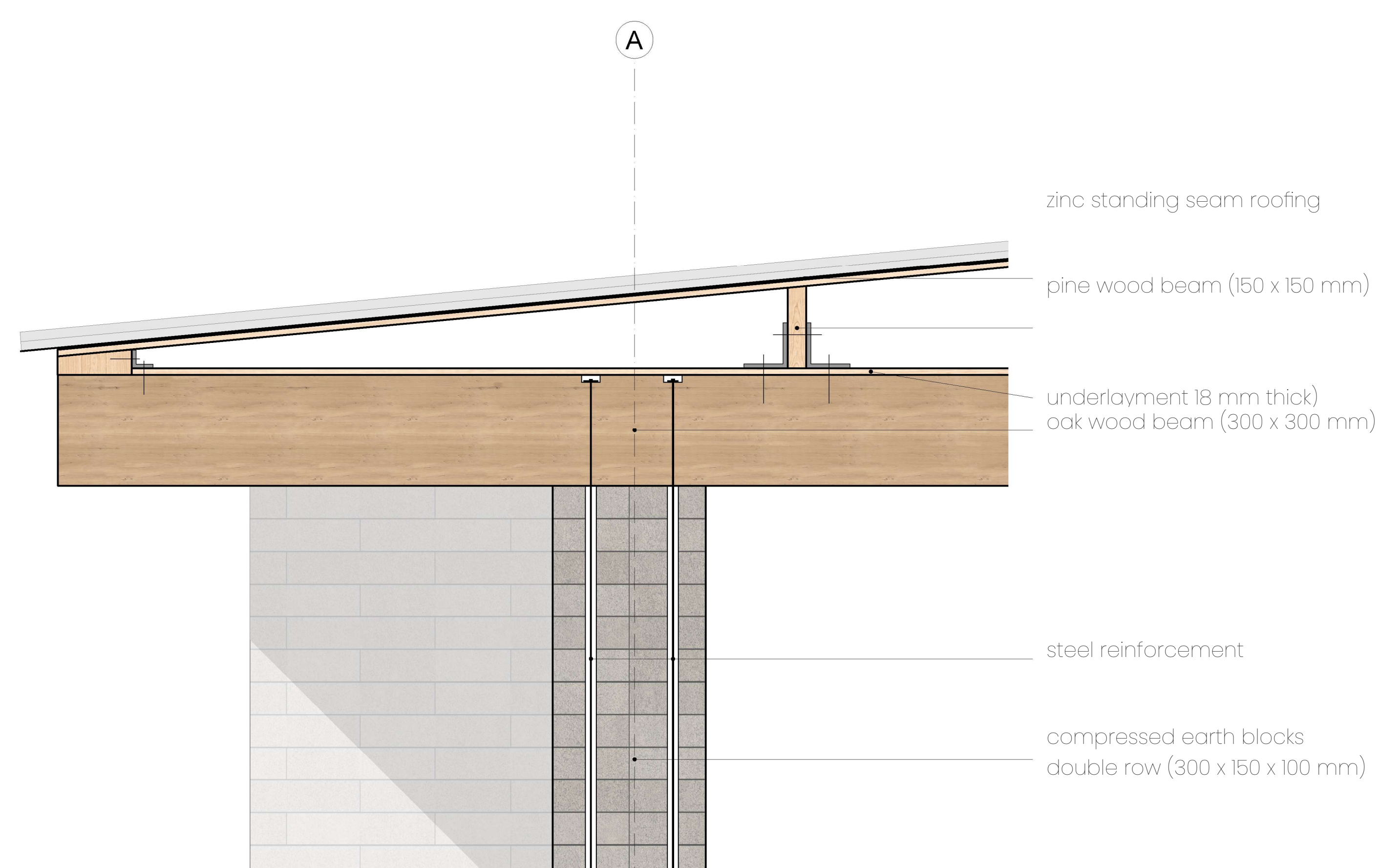




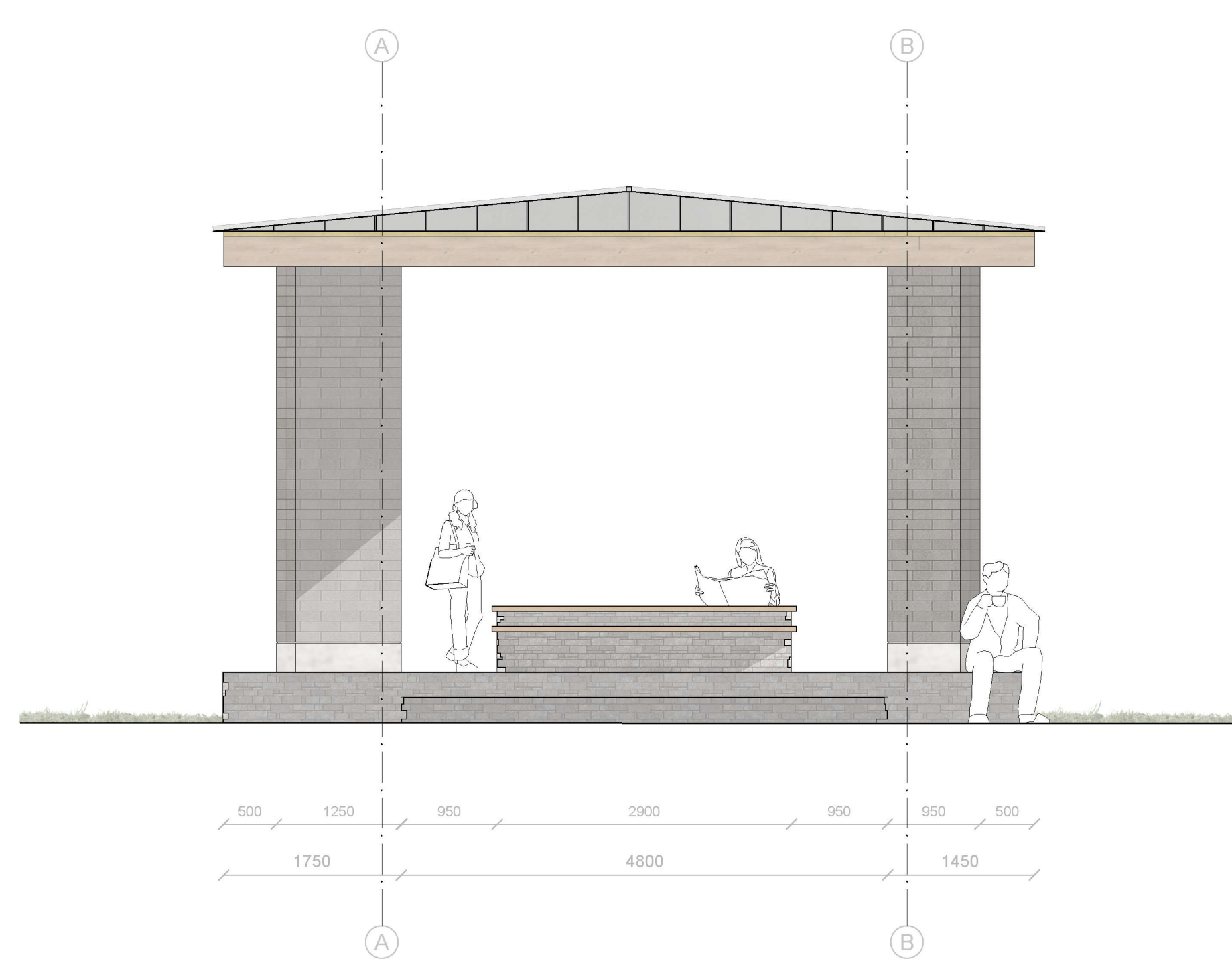
floor plan  
scale 1:50



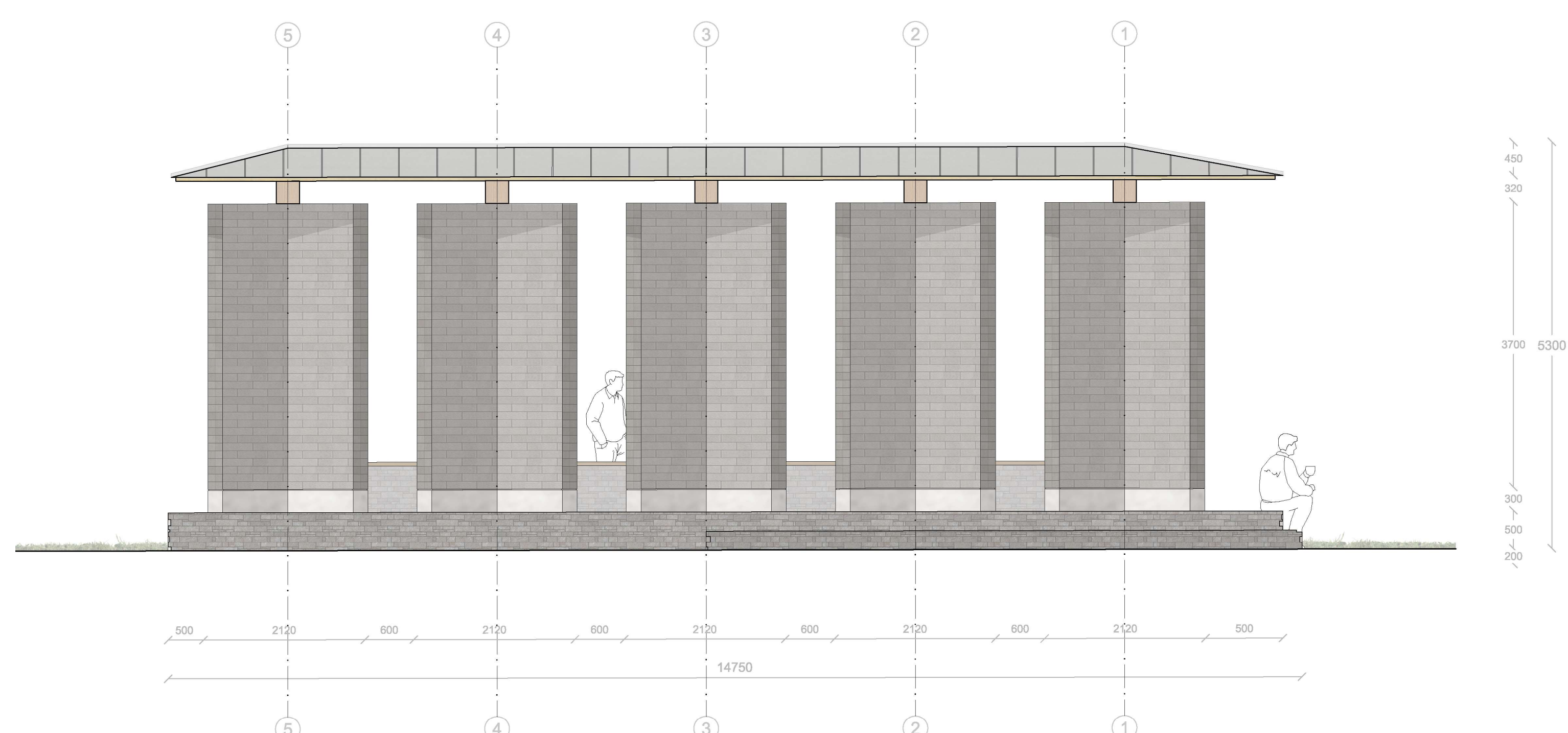
roof construction plan  
scale 1:50



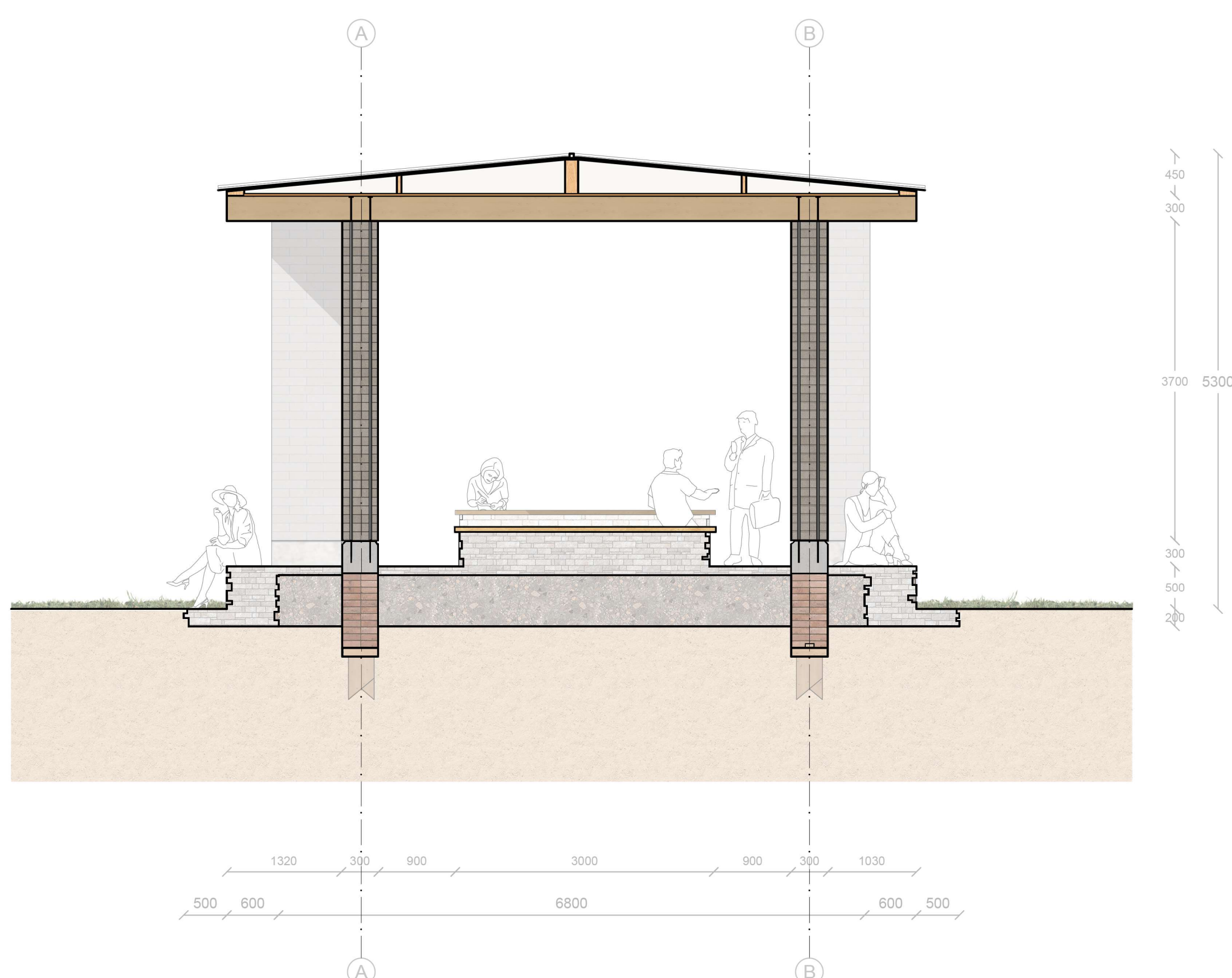
detailed section  
scale 1:5



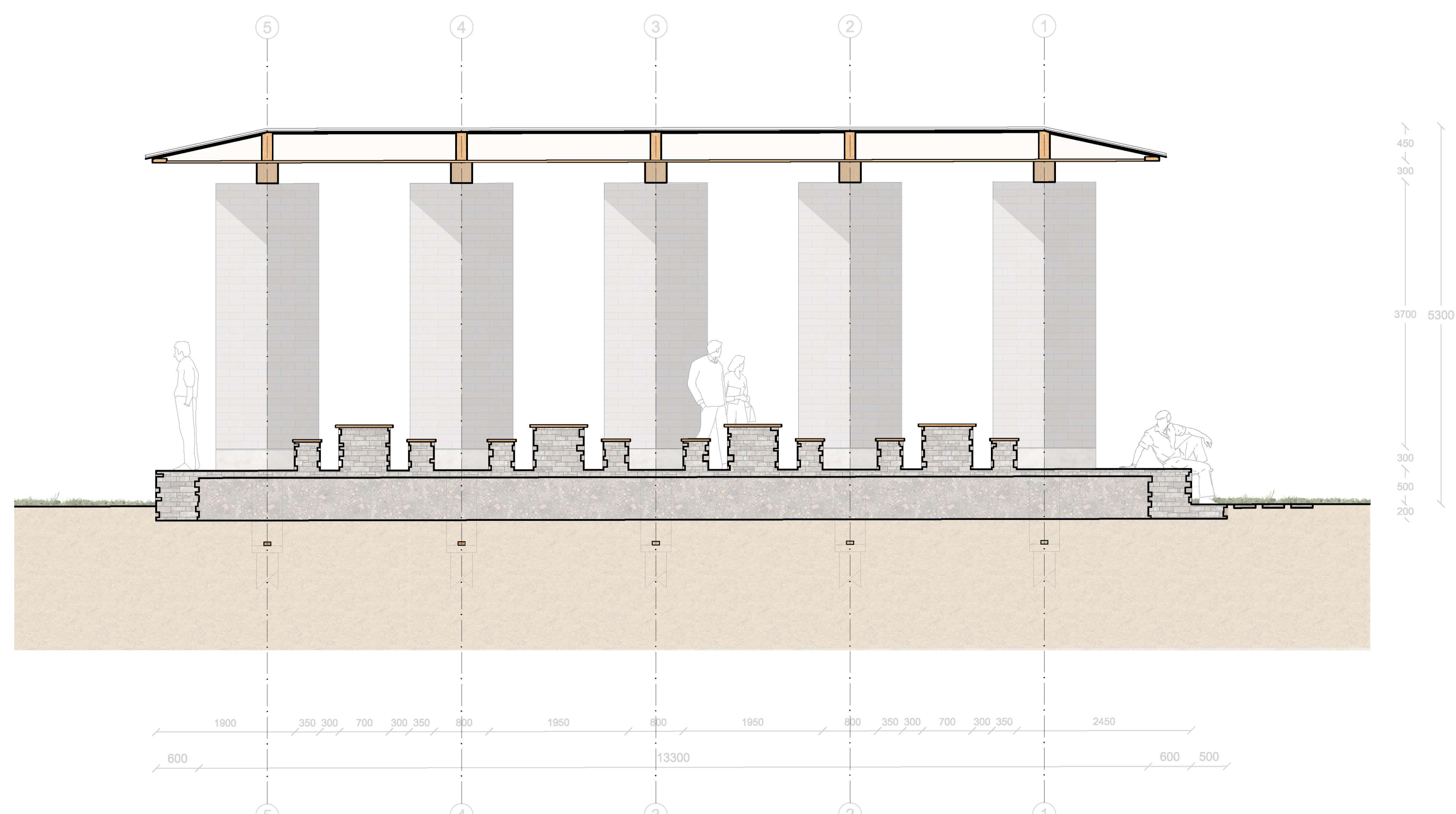
front façade  
scale 1:50



side façade  
scale 1:50



cross section  
scale 1:50



longitudinal section  
scale 1:50