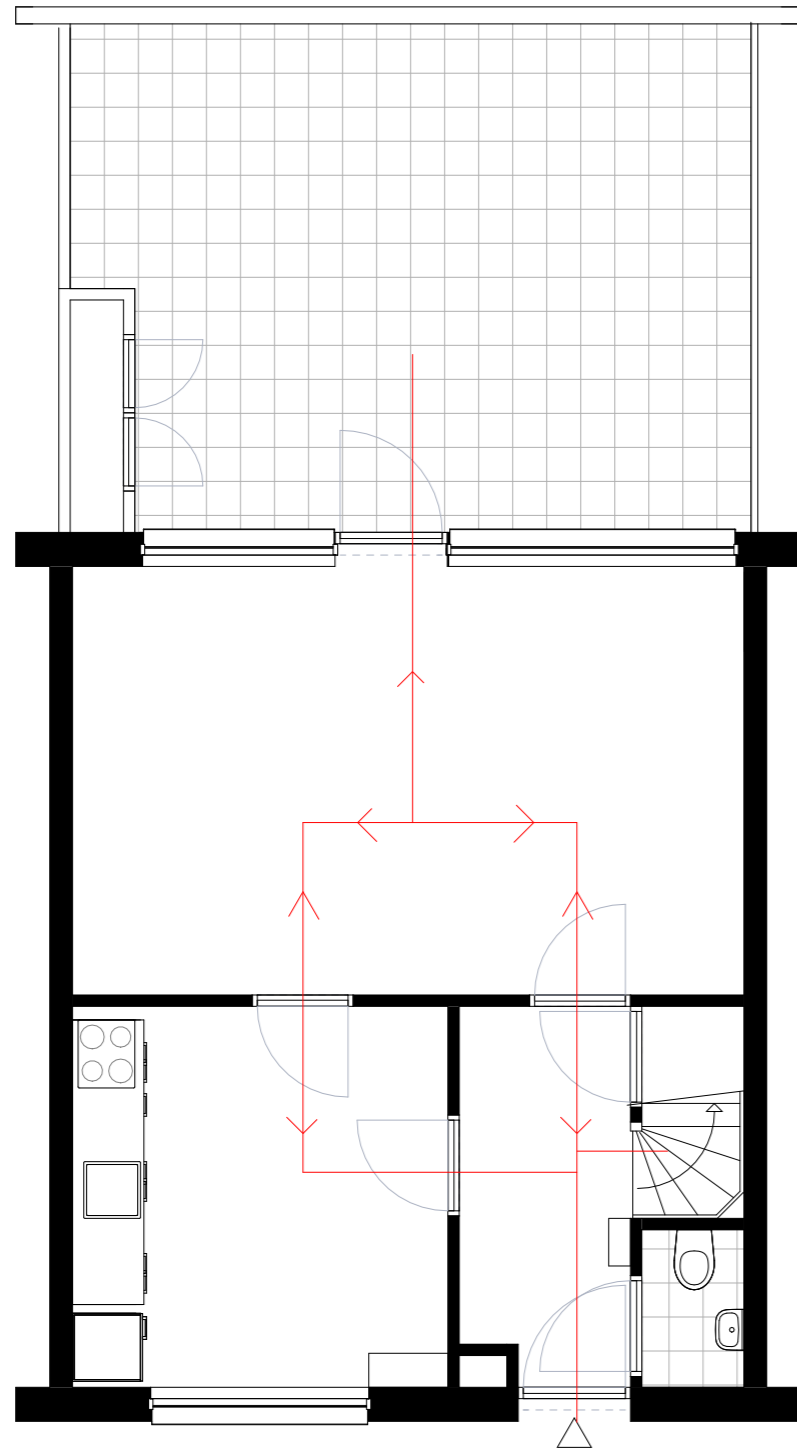


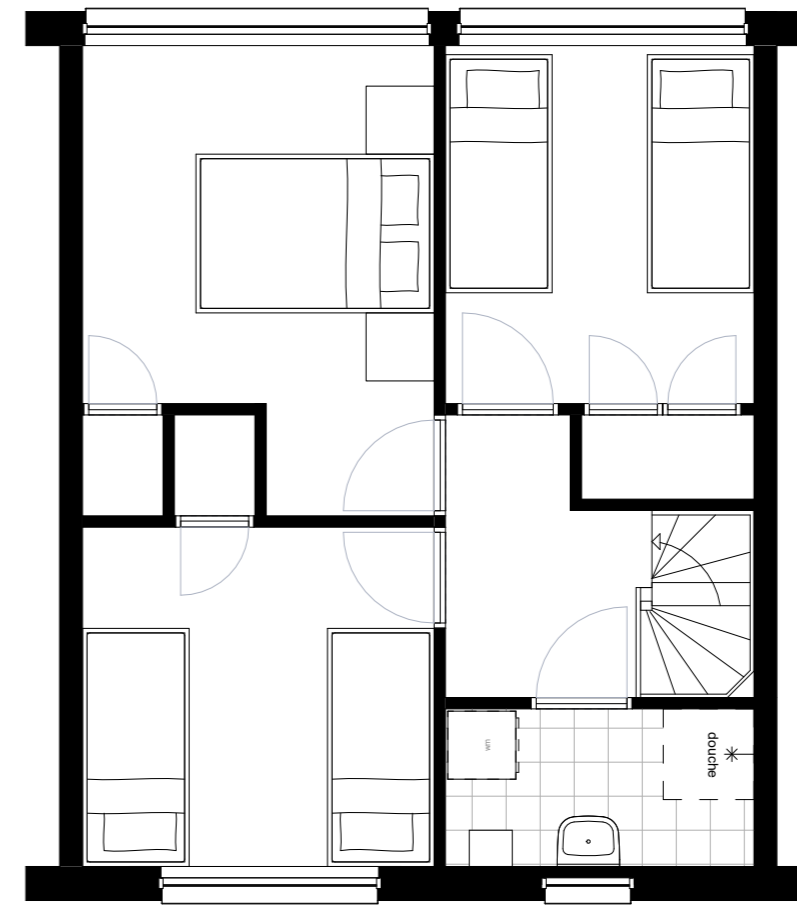
Studio Typische Wonen

1. Eigen woongeschiedenis

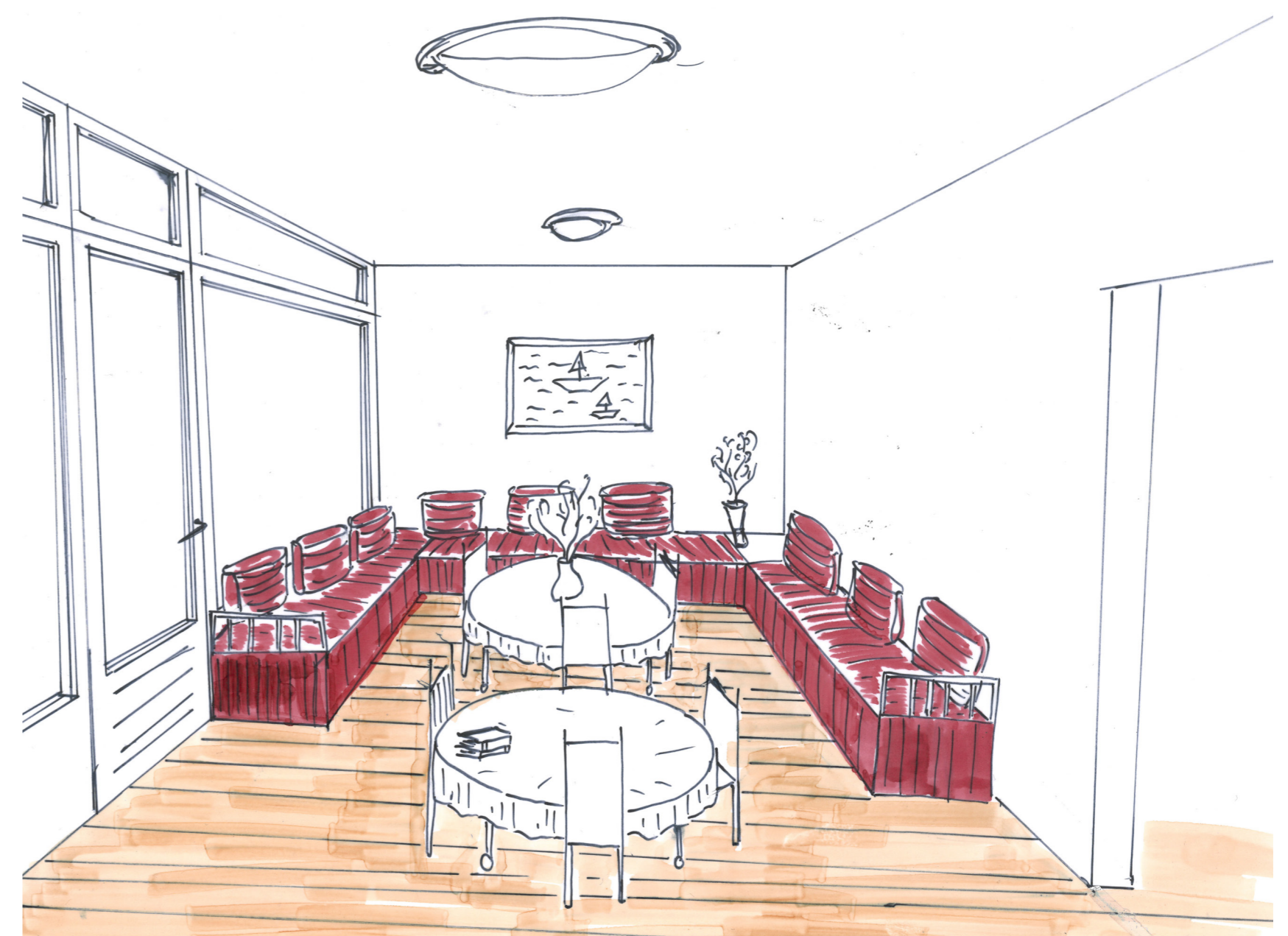
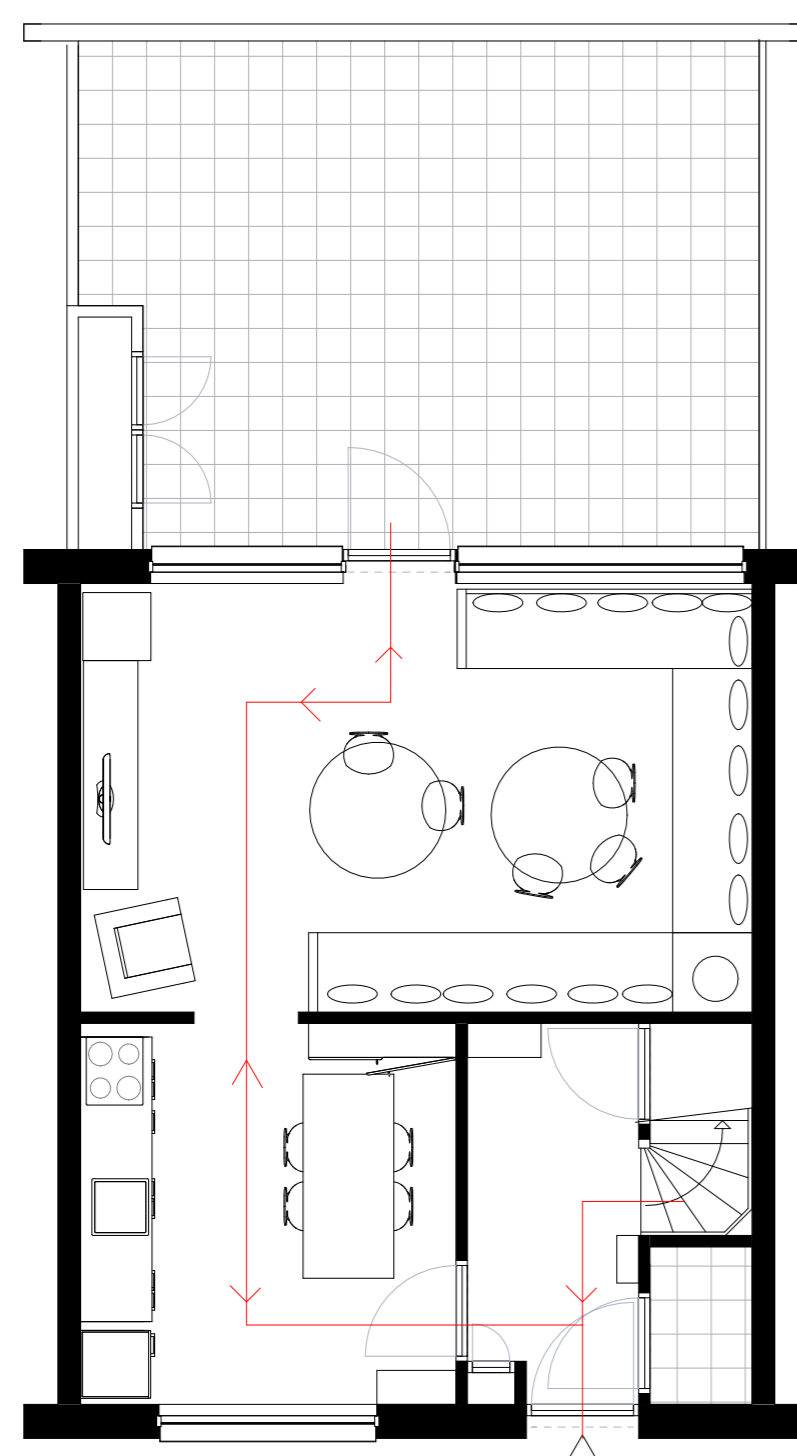
Plattegronden archief



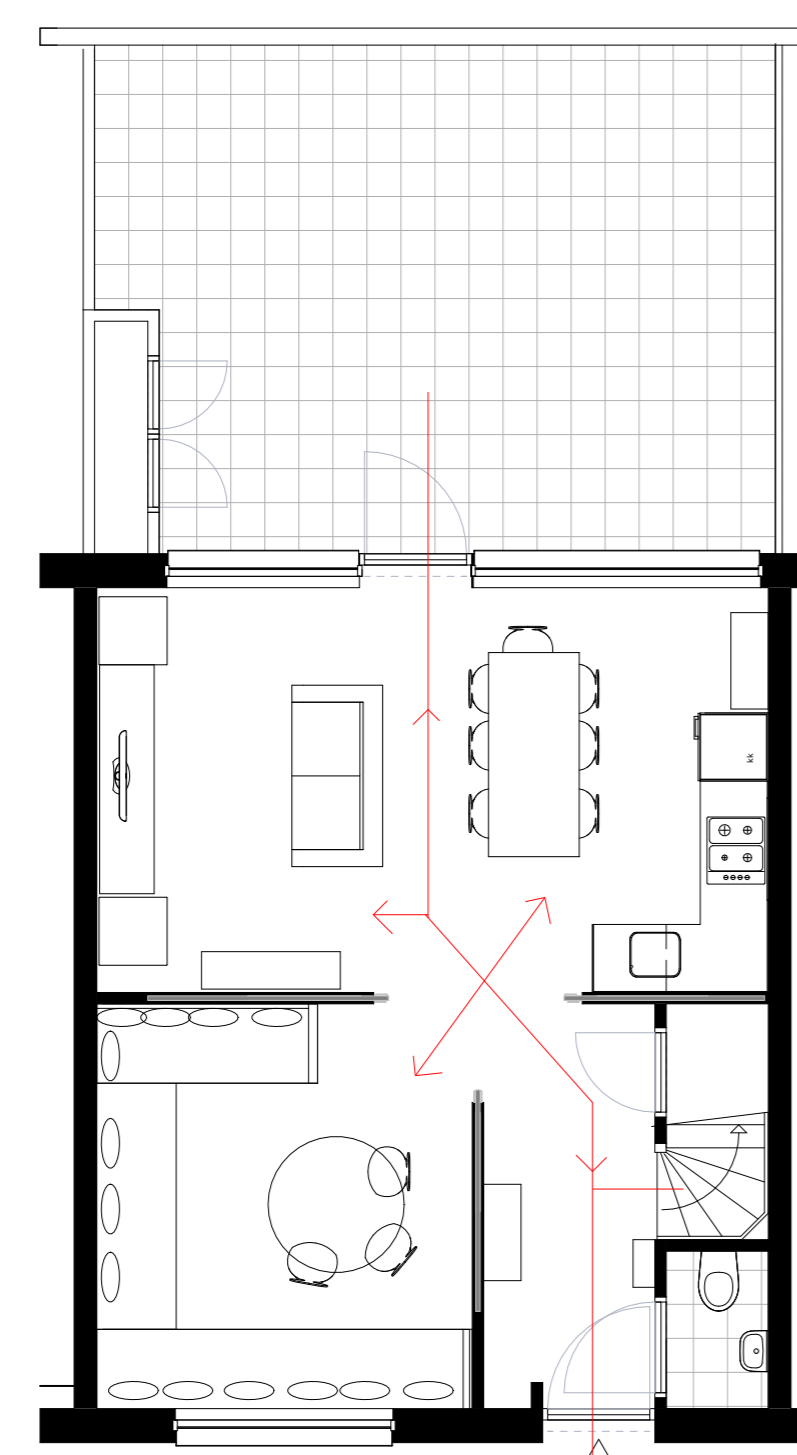
Locatie: Klaproosveld, Krimpen aan de IJk
Bouwjaar: 1974
Type woning: Maisonnette woning
Oppervlakte: 84 m²



Plattegrond bestand

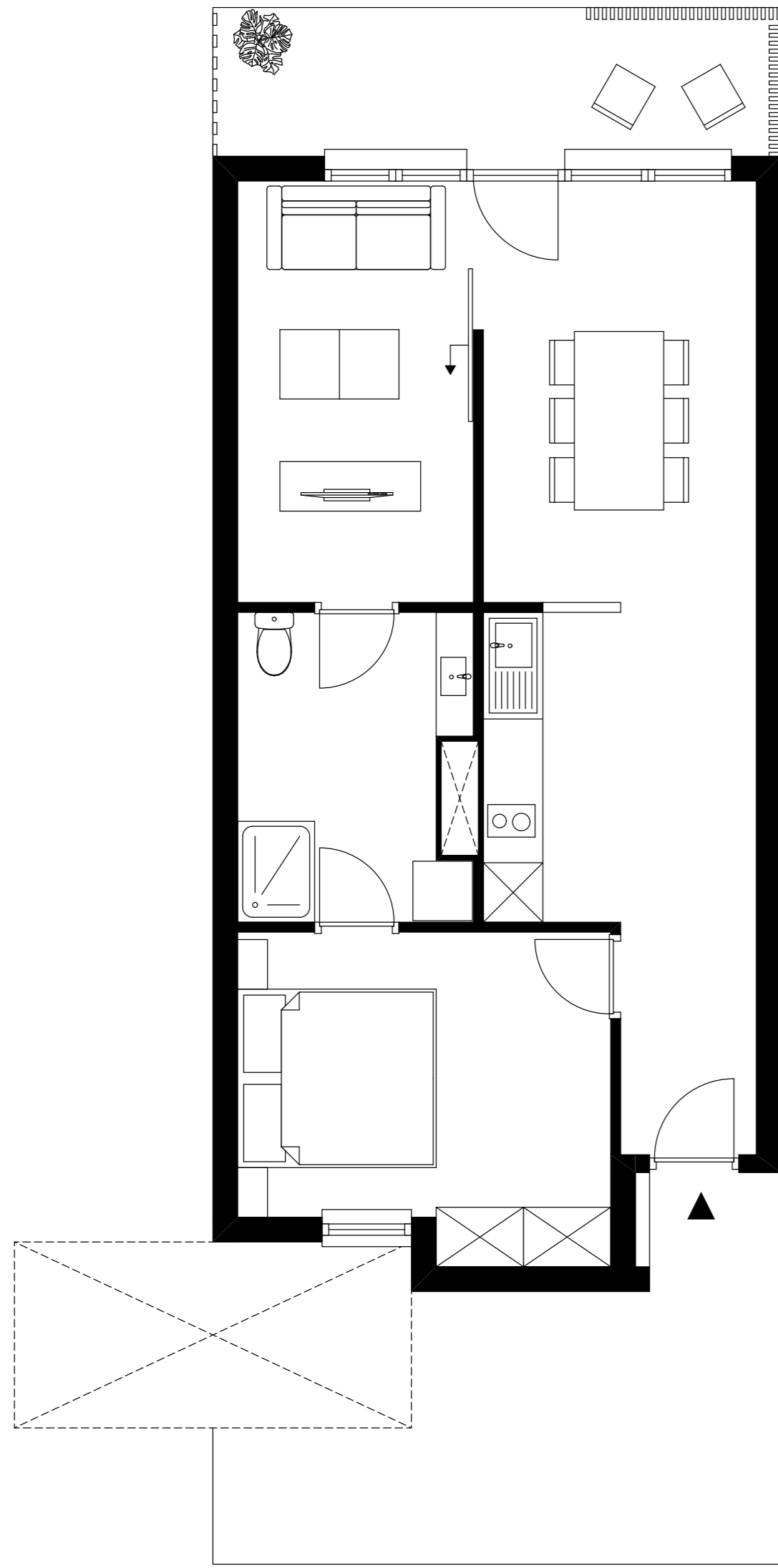


Plattegrond nieuw



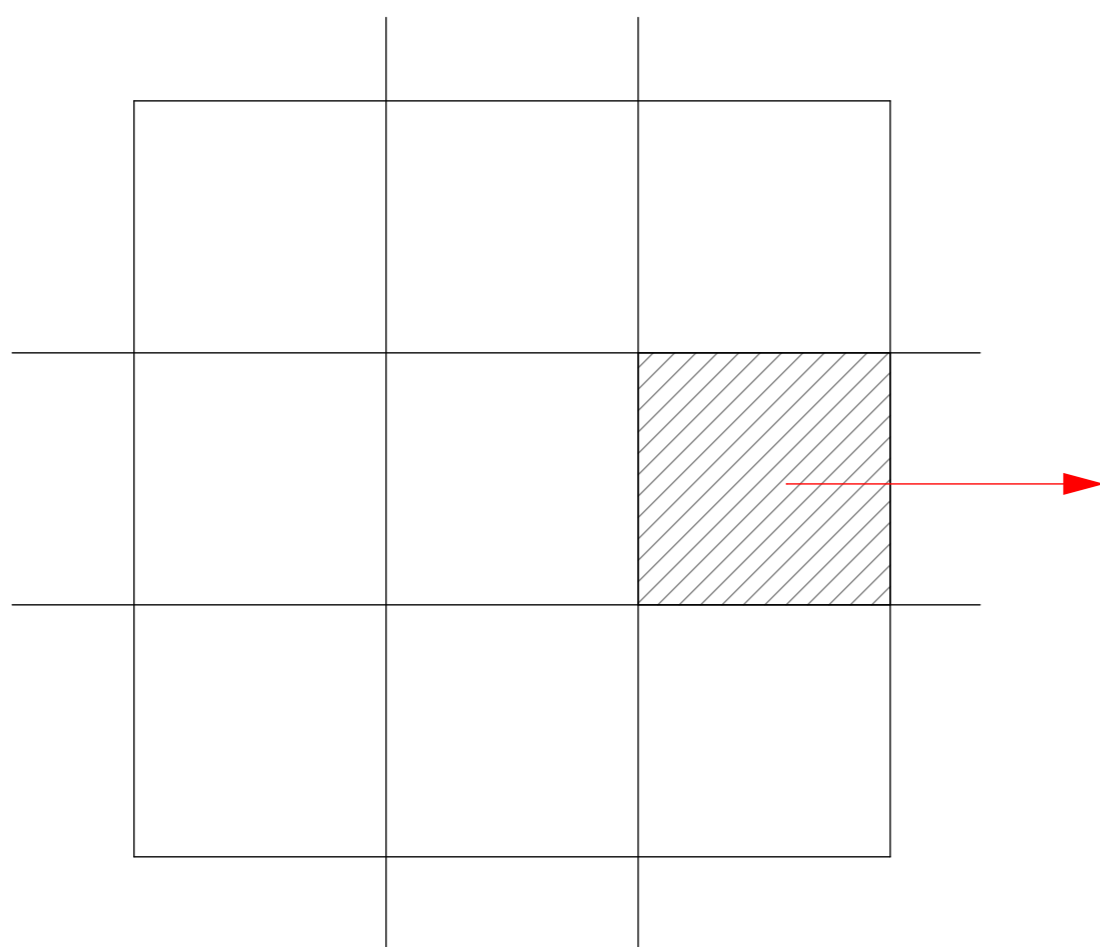
2. Referentiestudie

Bestaande plattegrond 1:50

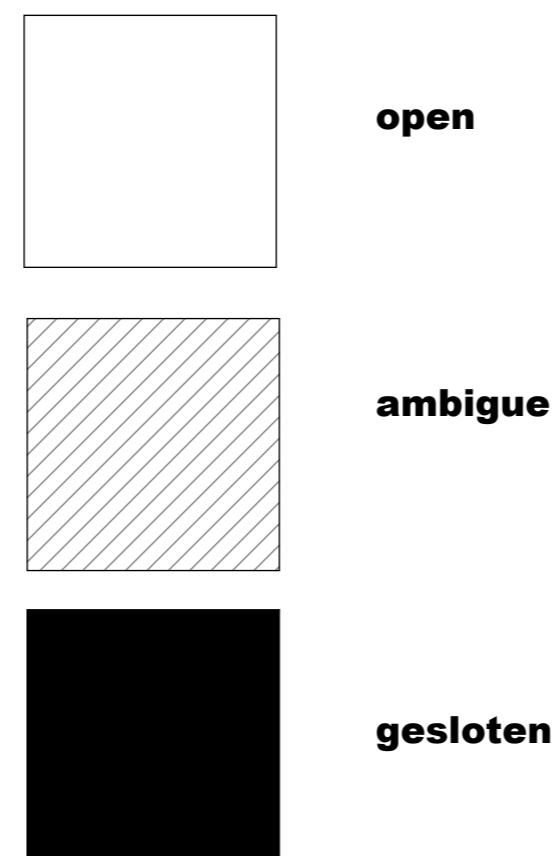


Locatie : Salou
 Bouwjaar : 2007
 Type woning: Appartement
 Oppervlakte: 55 m2

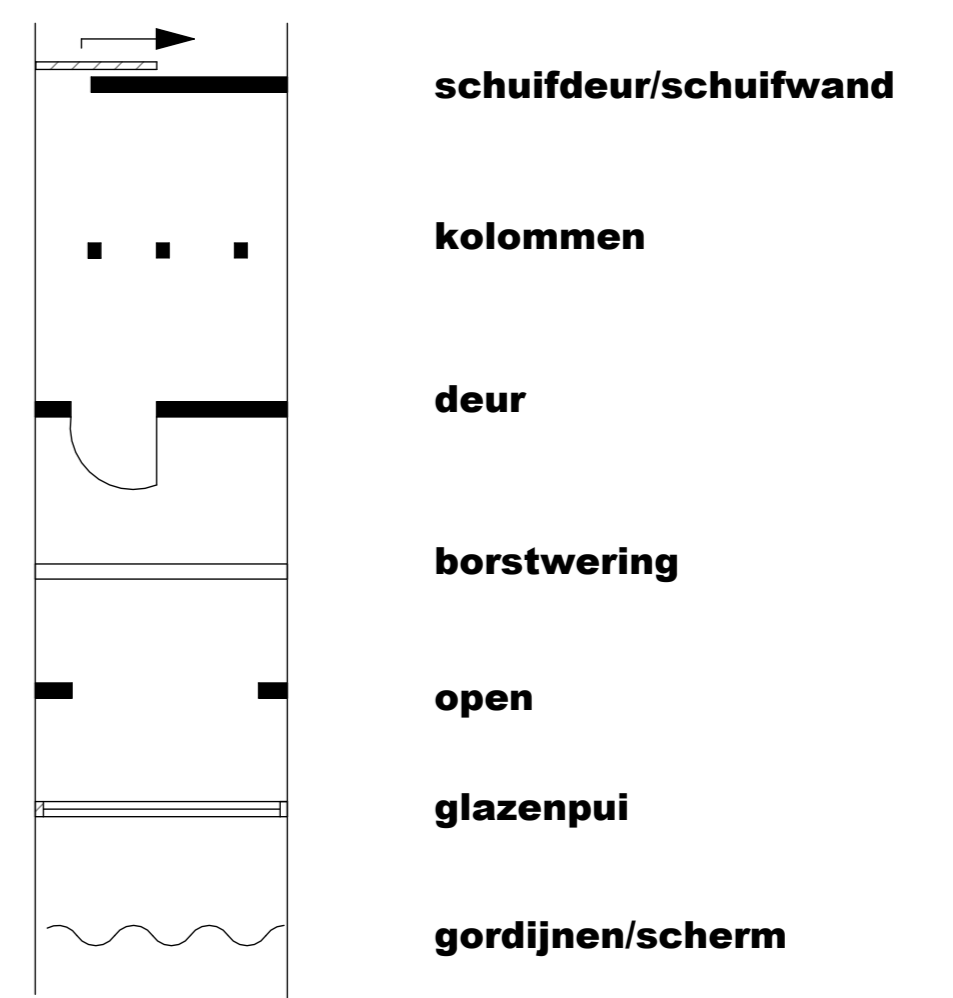
Zoneverdeling



Ruimtebeleving



Ruimtesequentie



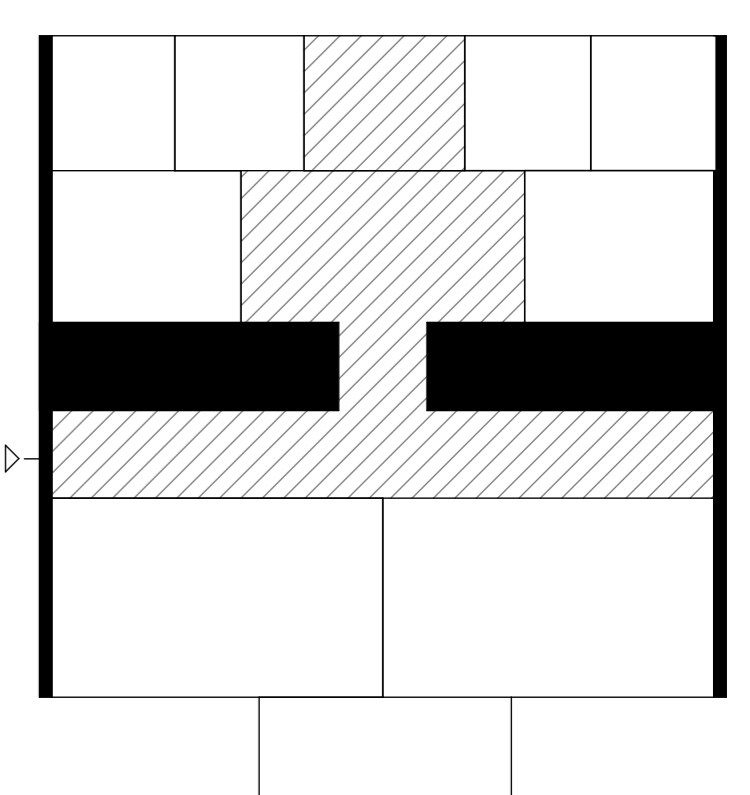
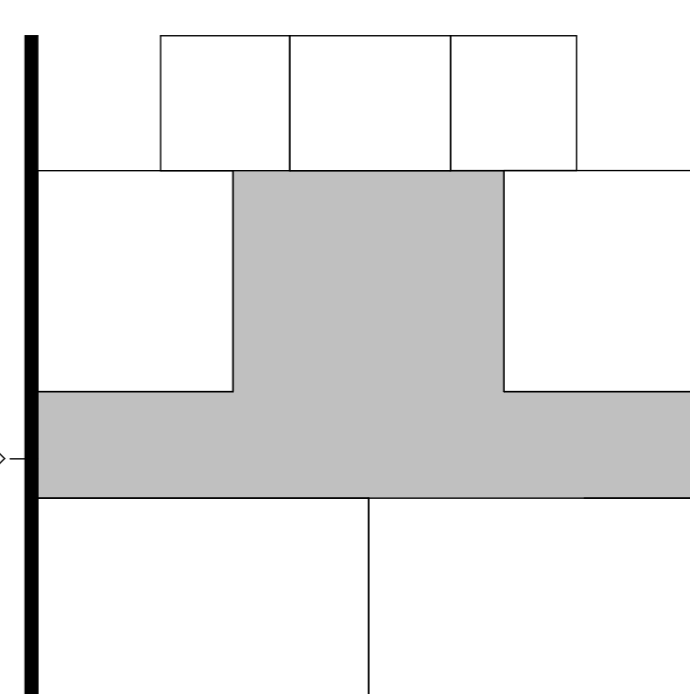
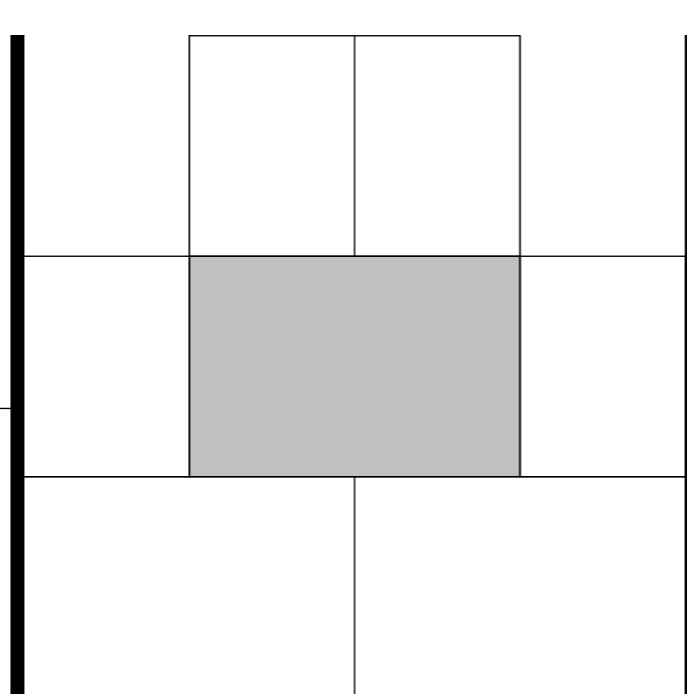
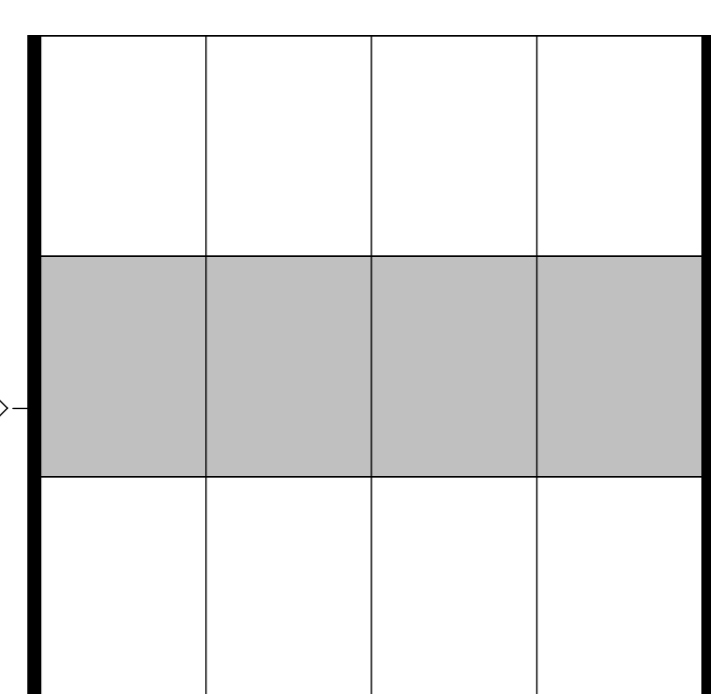
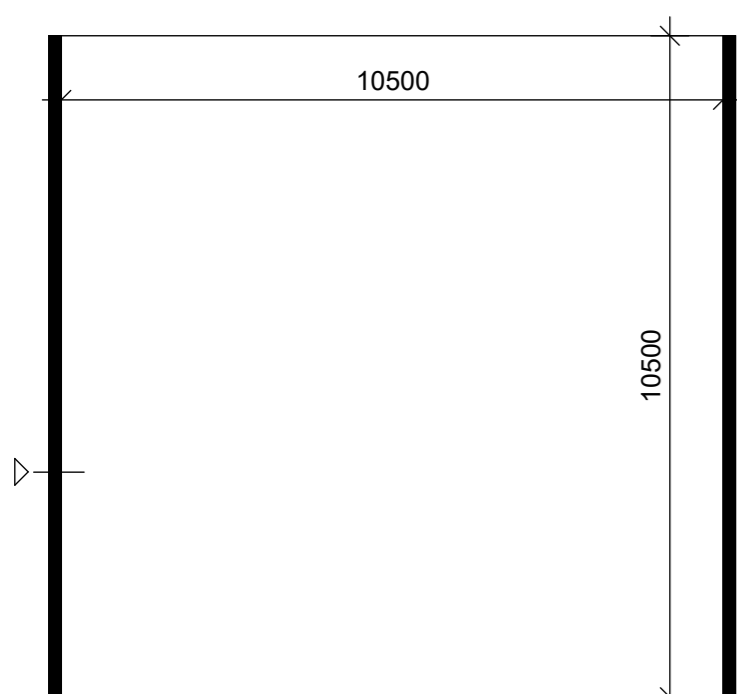
Envelop

Zoneverdeling

Kamerindeling

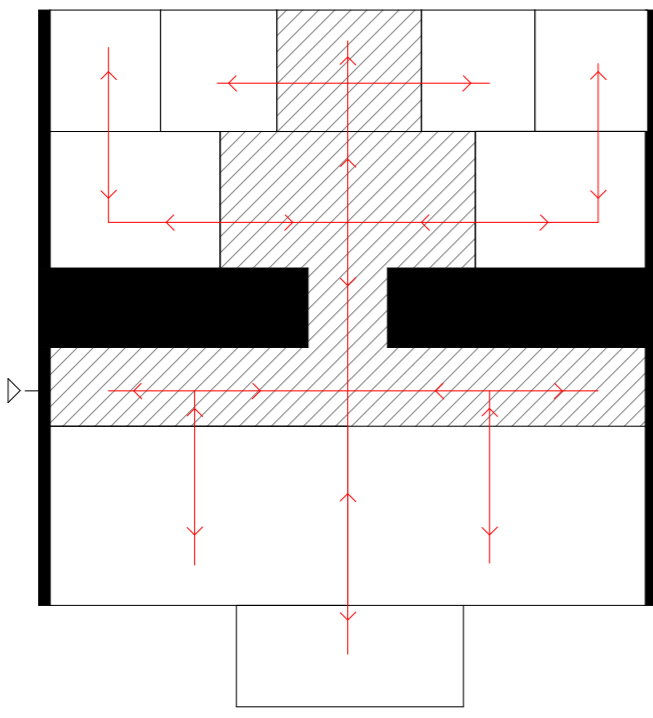
woonscenario's

Concept

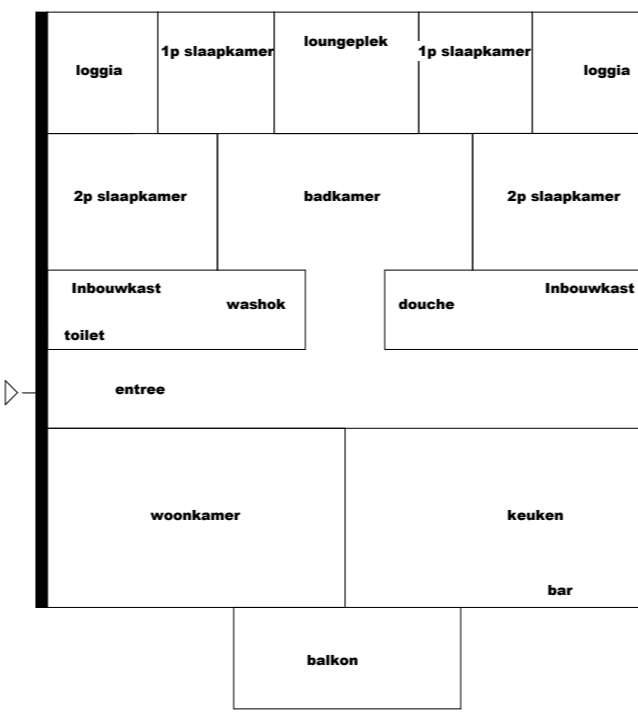


3. Nieuw woningtype

Schakelstuk



Programma



Dag en nacht

