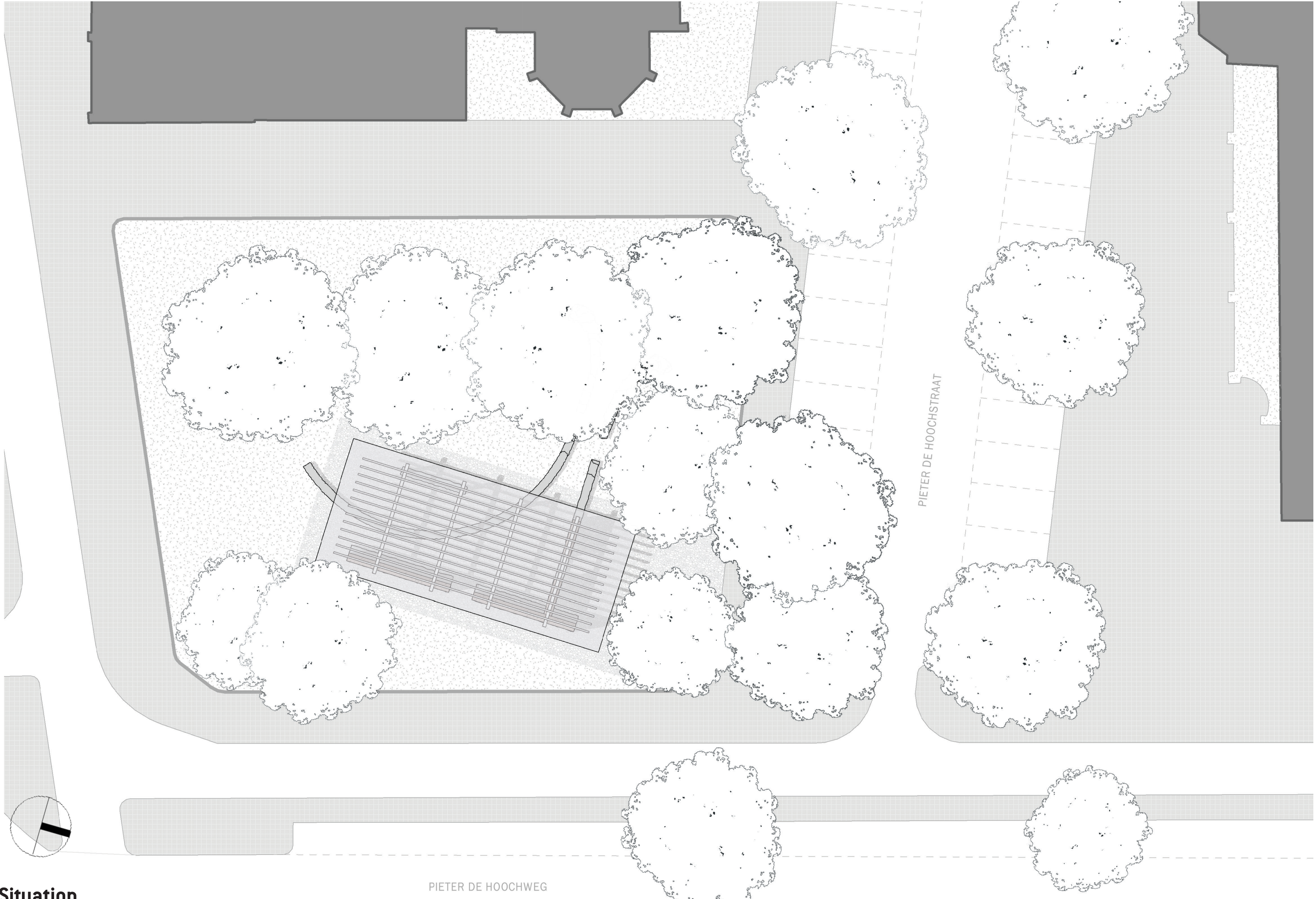


THE GROUNDED STUDENT PAVILLION

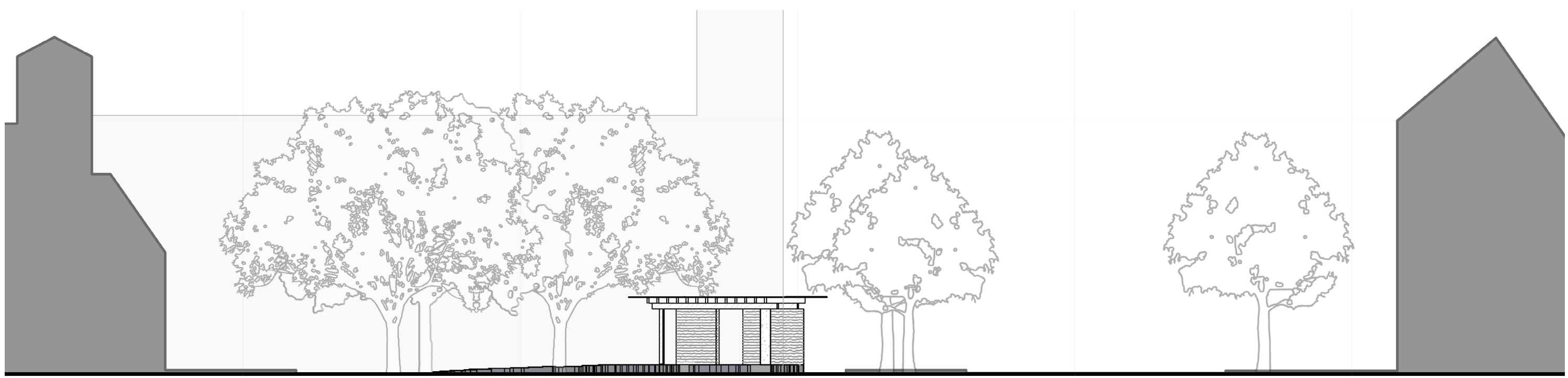
At the crossroad of the Pieter de Hoochweg and Pieter de Hoochstraat we find The Grounded Student Pavilion. Surrounded by no more than 4 educational facilities within the parameter of 100 meters there is a lack of defined public space for students. **The Grounded Student Pavilion intervenes and offers shelter, a place for different ways of social interaction and a place for contemplation, inspiration and fascination.**

The main material component of this pavilion is 'rammed earth'. A mixture of clay, loam, sand, gravel and water, layered and compressed with pneumatic ramming into a wooden frame work, eventually forming a dense load bearing wall. The material palette moves from heavy stone and earth to light wood and a polycarbonate reaching to the sky.

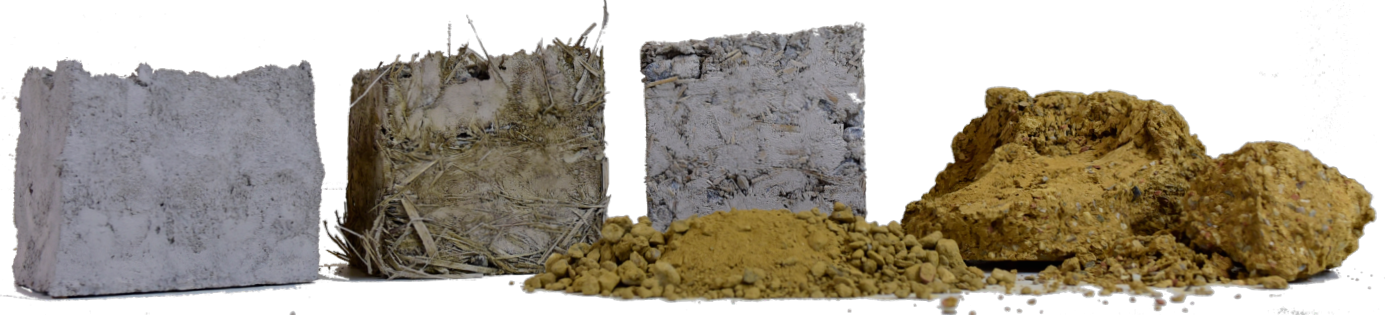
The design is aimed at integrating **a minimalistic and pure esthetic and use of materials.** The infrastructural streams of vehicles and pedestrians determines the orientation and gestures which lead the people in.



Situation
1:200



Section
1:200



Material research with self made samples



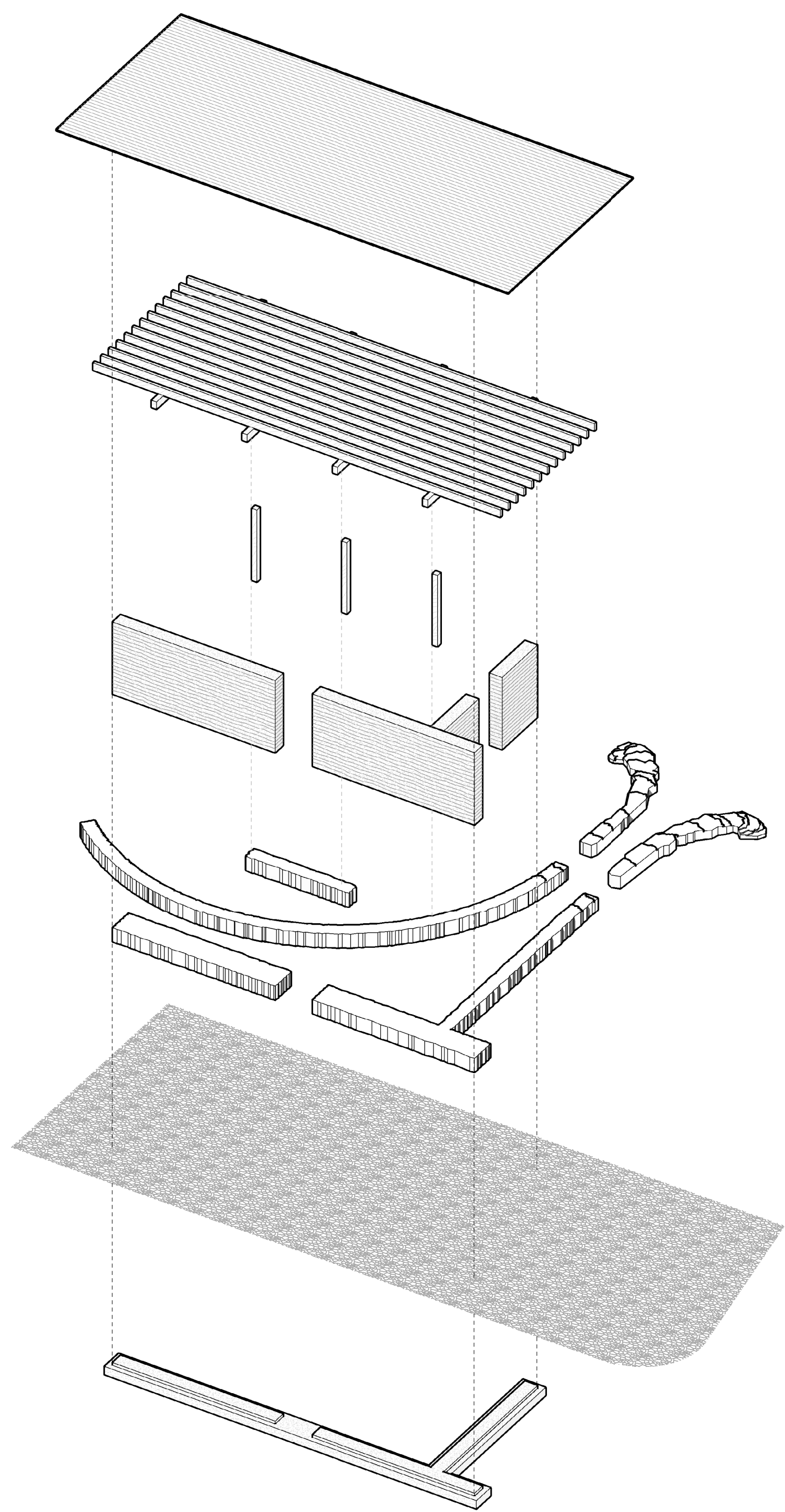
Color palette research



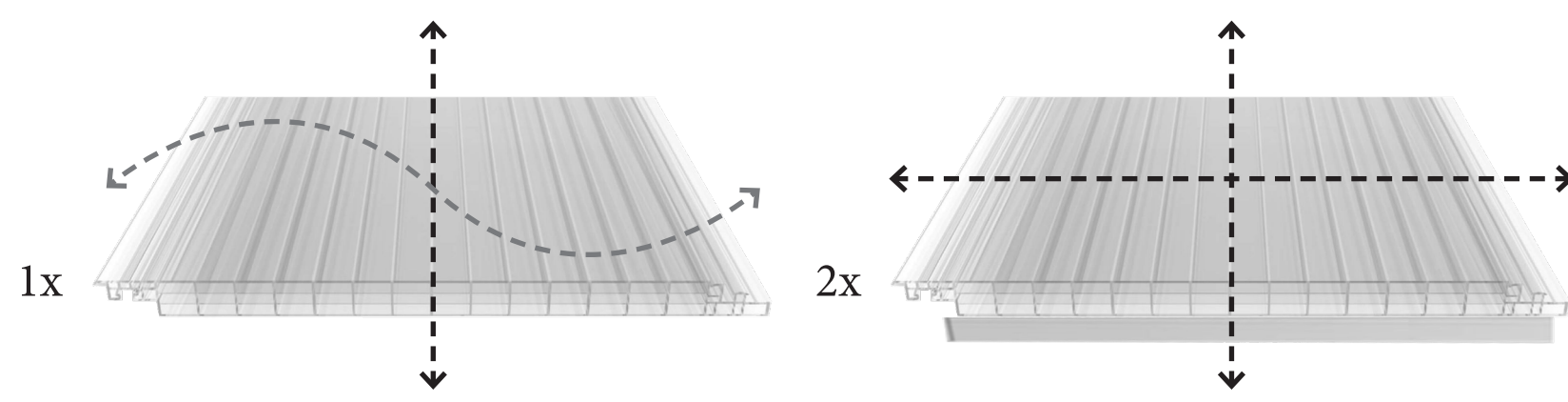
Local harvest (construction sites / sculptors)



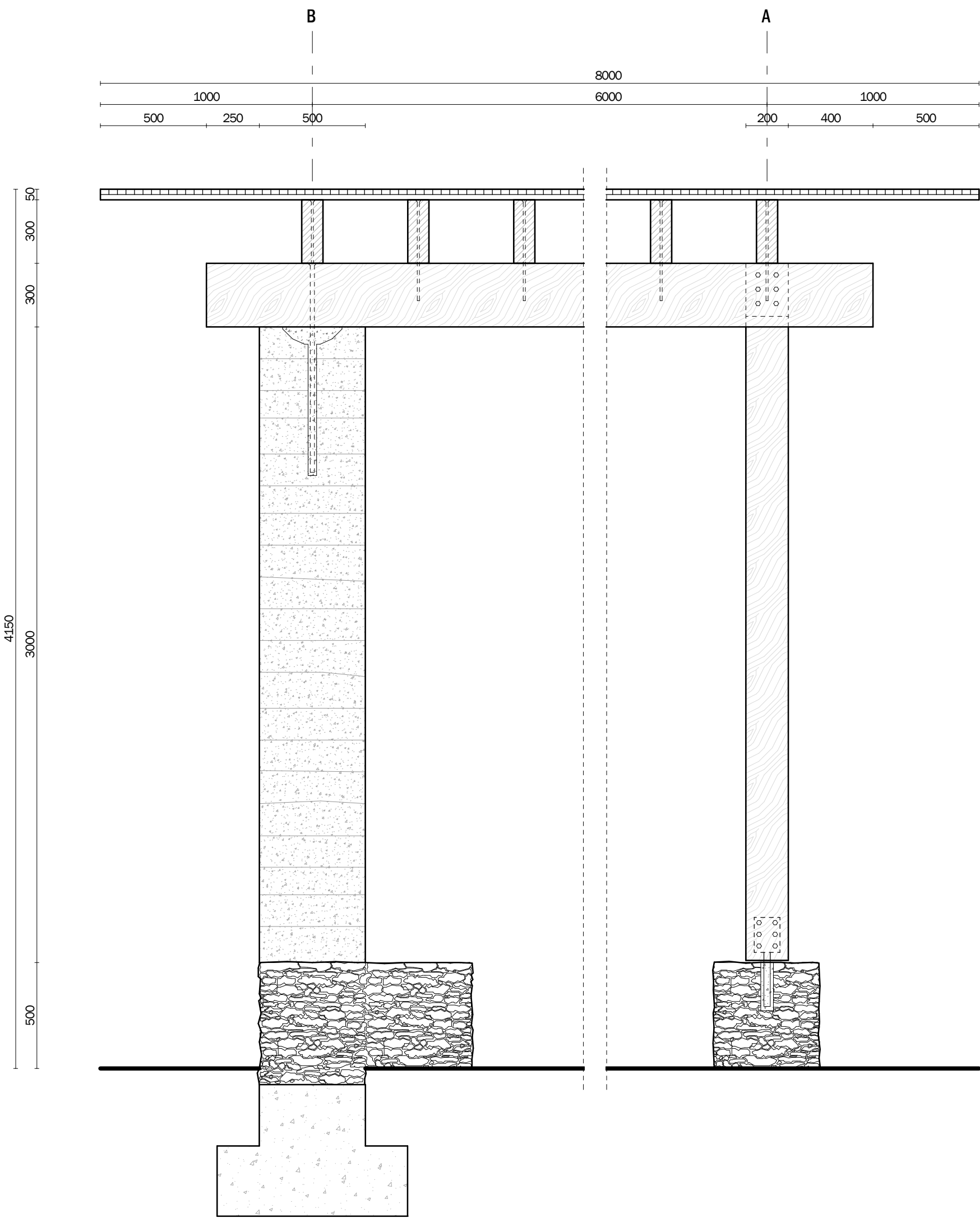
Wood with PEFC quality mark



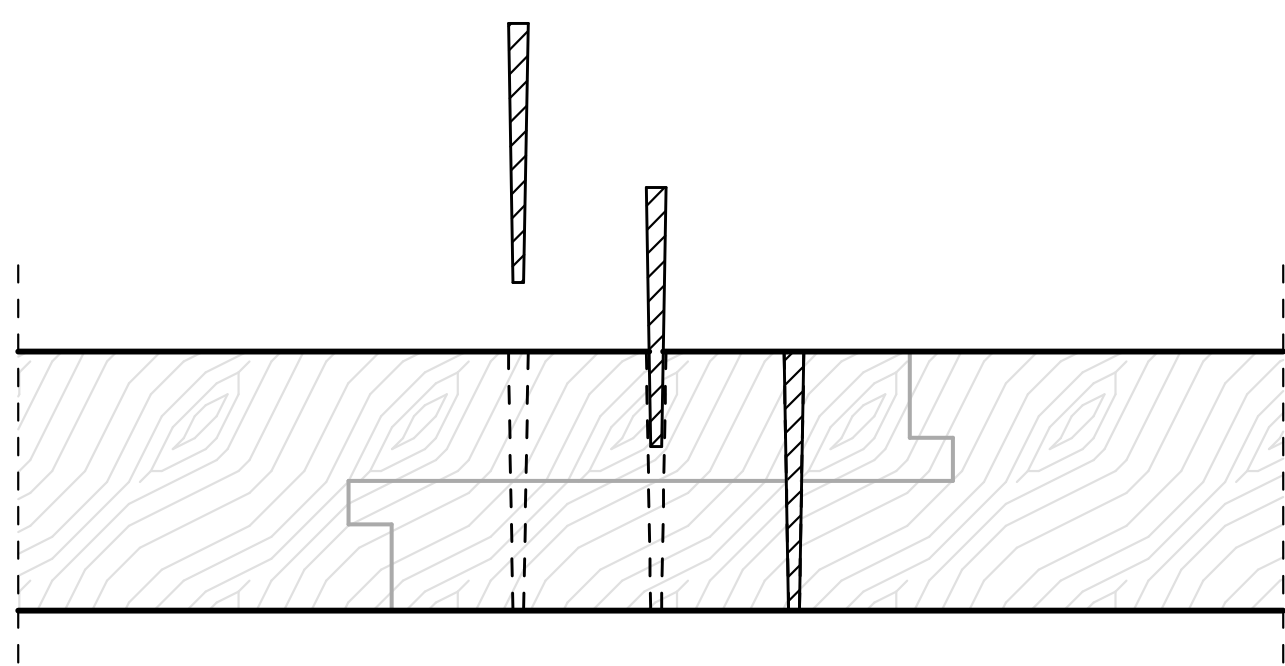
Axonometry - Exploded view



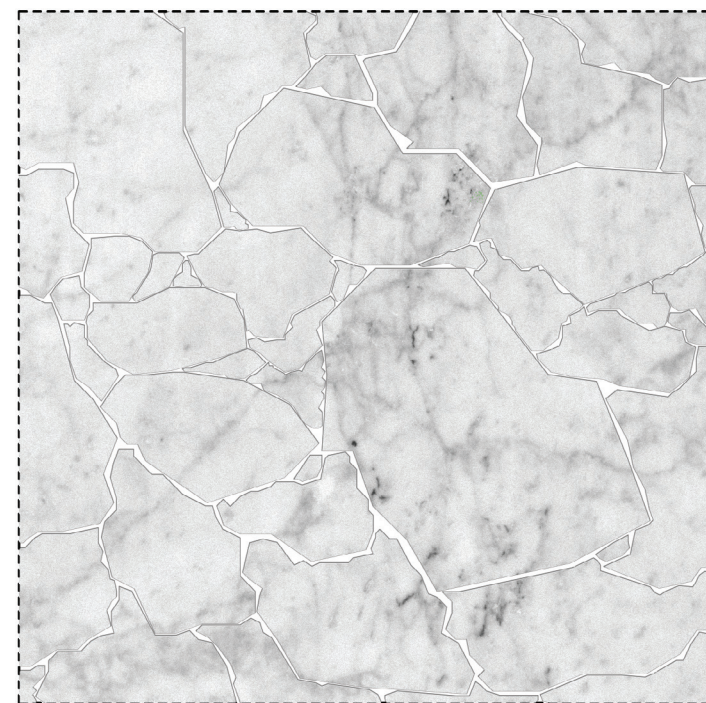
Principle - Double poly polycarbonate plates for stiffness in two directions



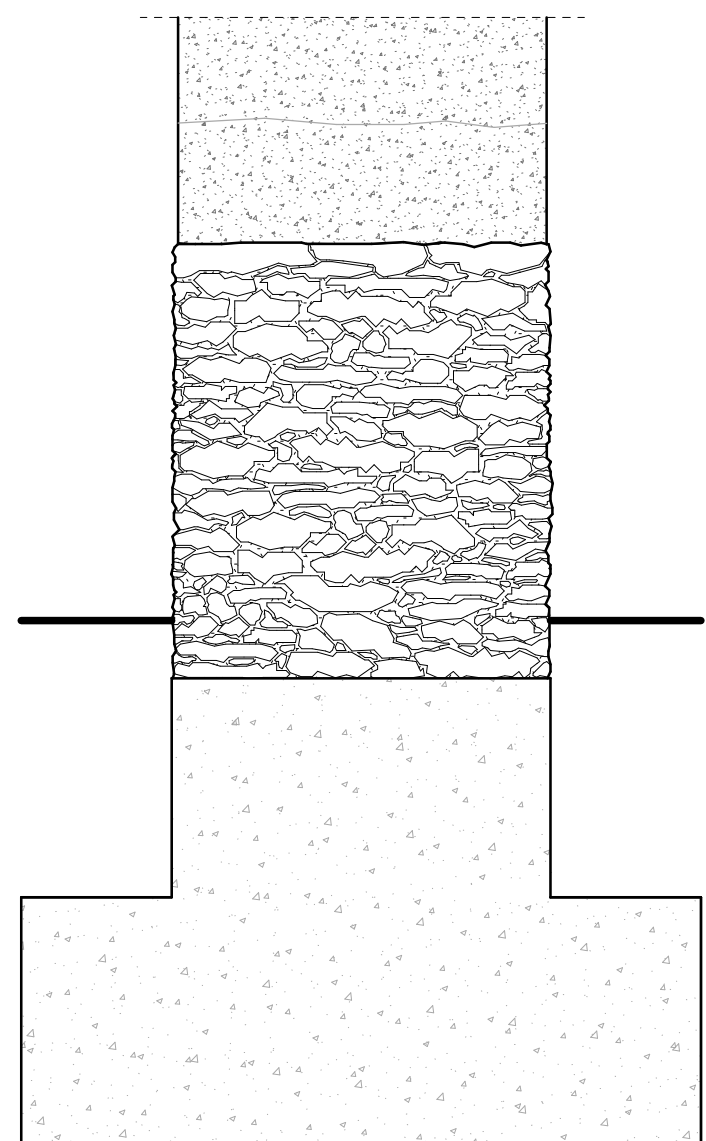
Section - Technical overview
1:20



Detail - Kanawa Tsugi joint with oak dowels
1:10



Fragment - Natural stone mosaic floor
1:10



Details - Rammed earth and stone base
1:10

- Rammed Earth, dark Rotterdam clay
Fixed by own weight
- Slate bench, cemented
Prevents capillary transmission
- Light natural stone mosaic floor
- Concrete base



3D Sectional view - Materiality

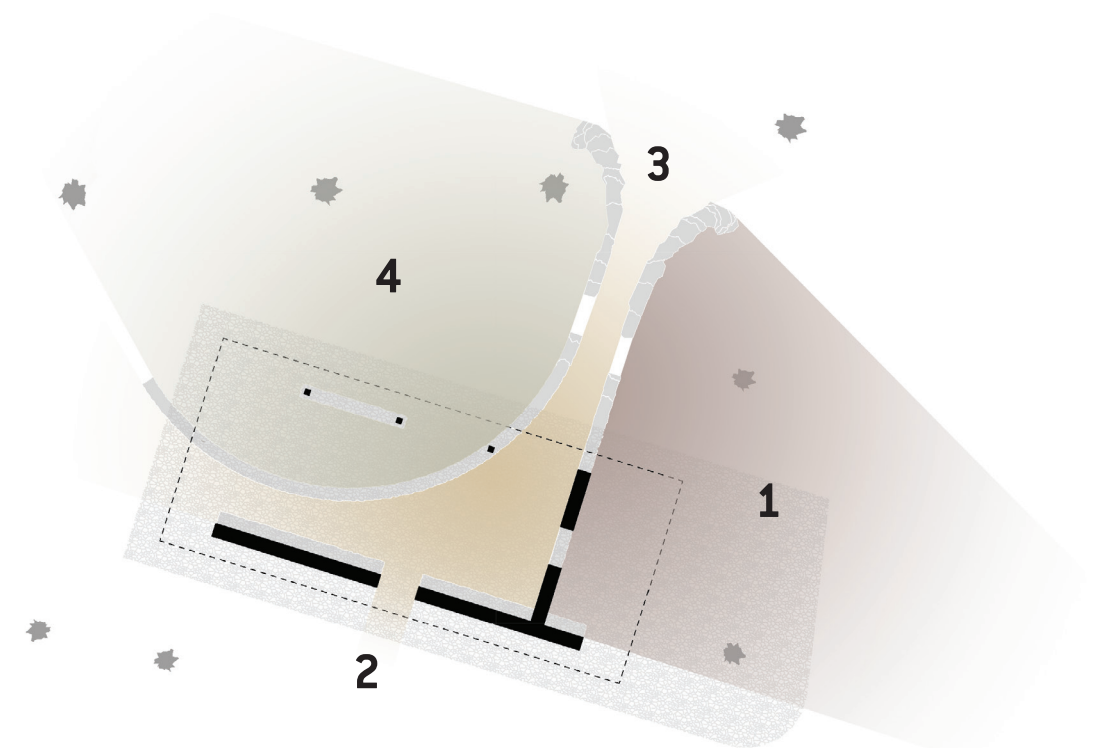


Diagram - Gestures

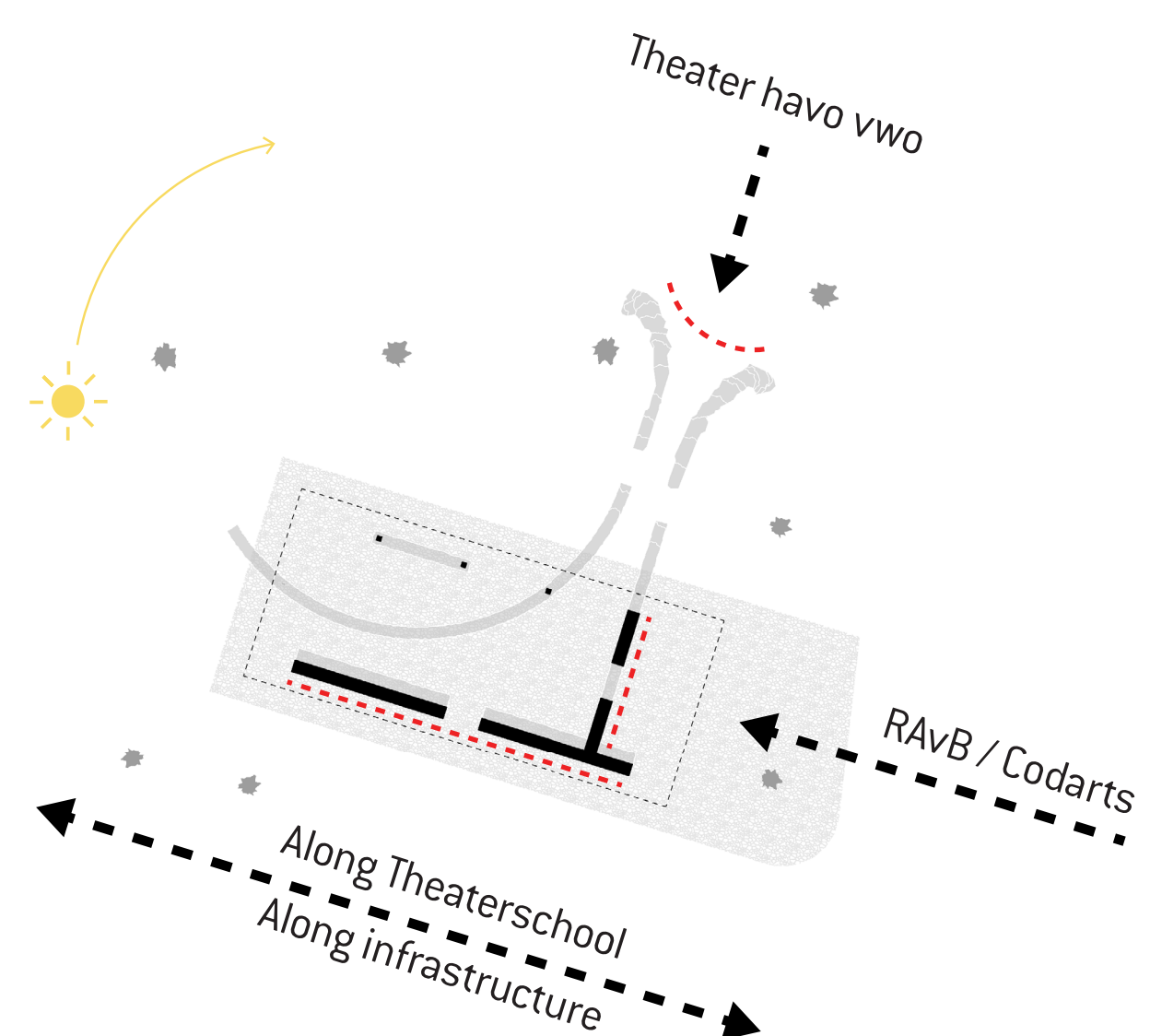
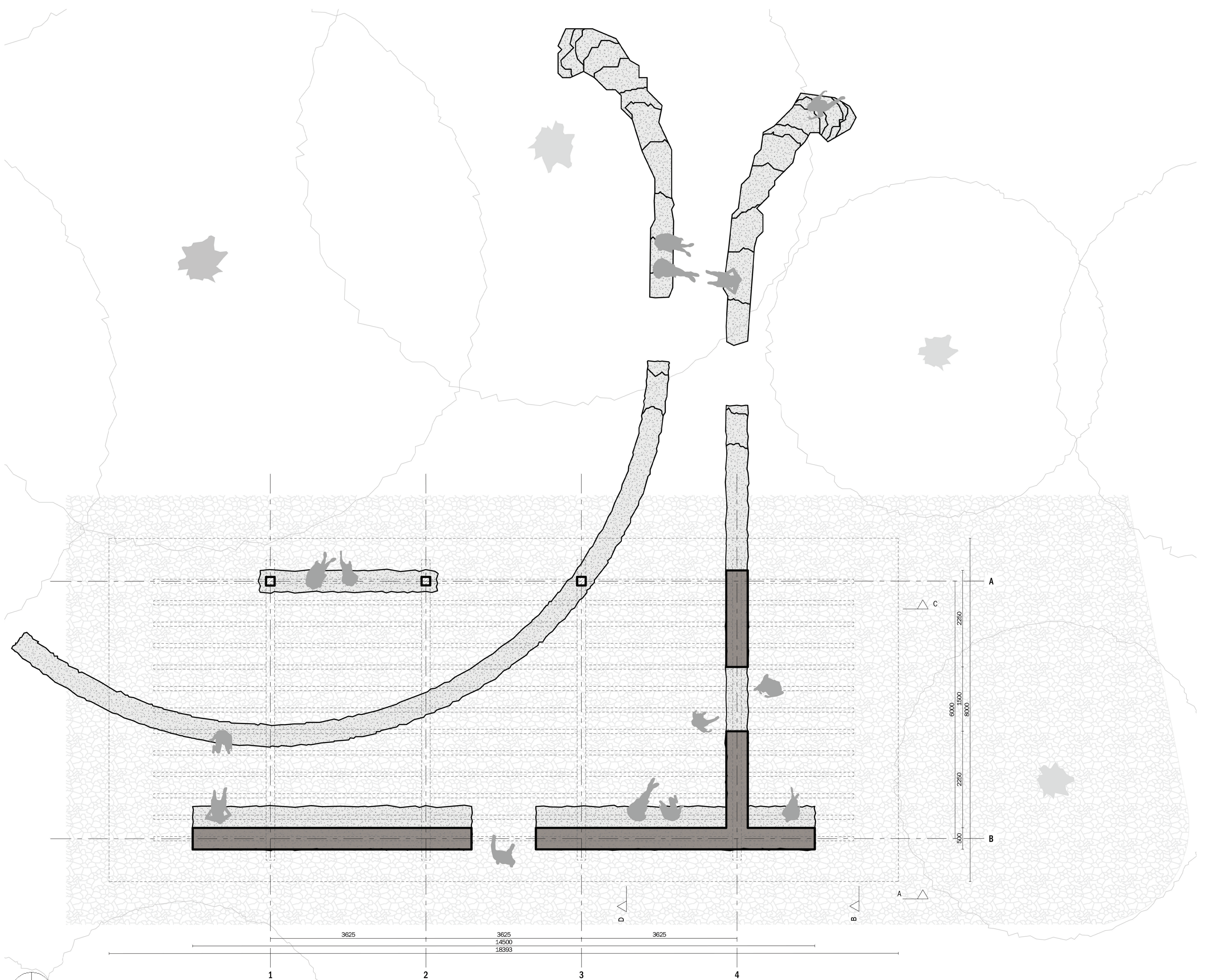


Diagram - orientation



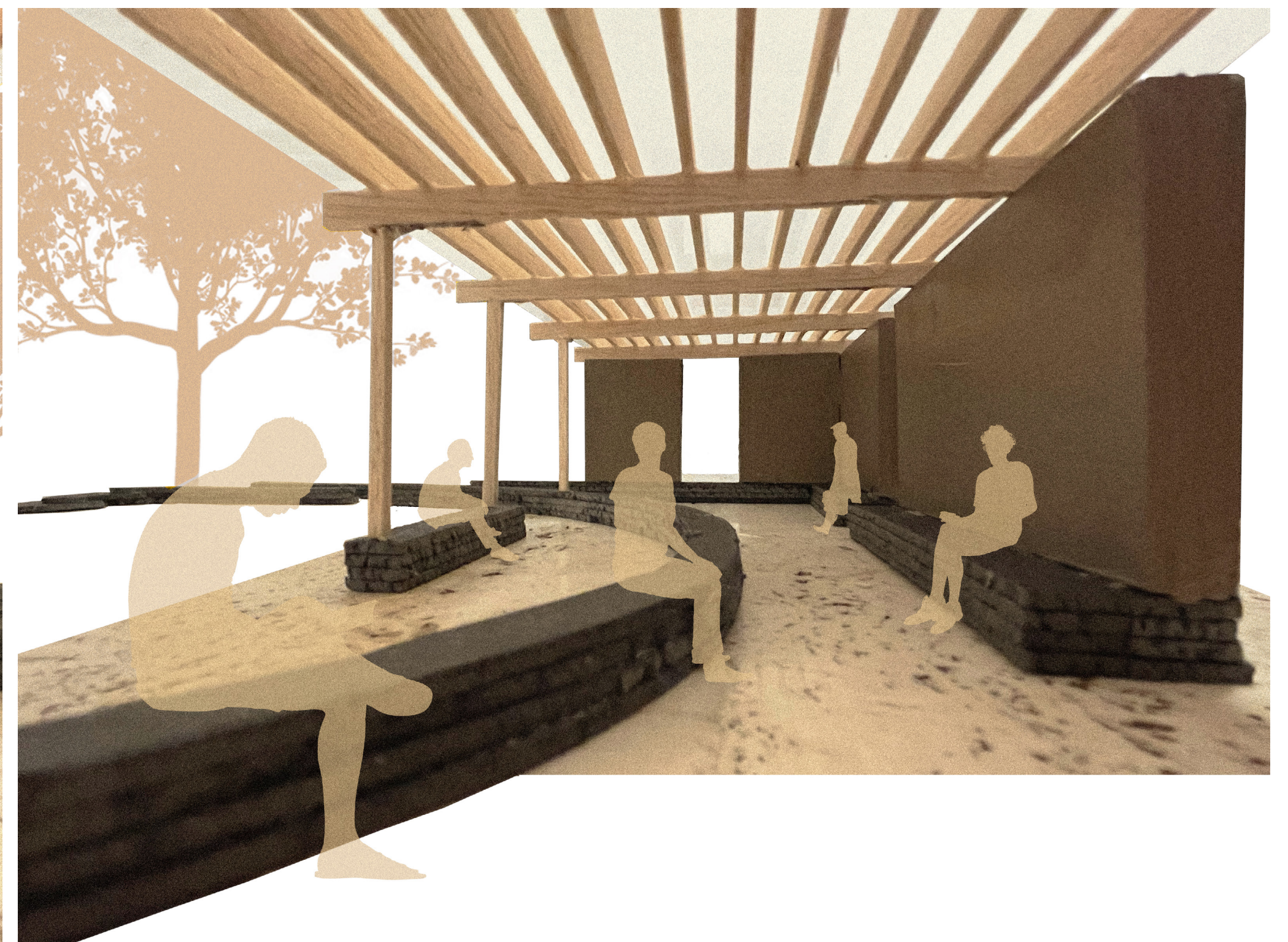
Floor plan
1:50



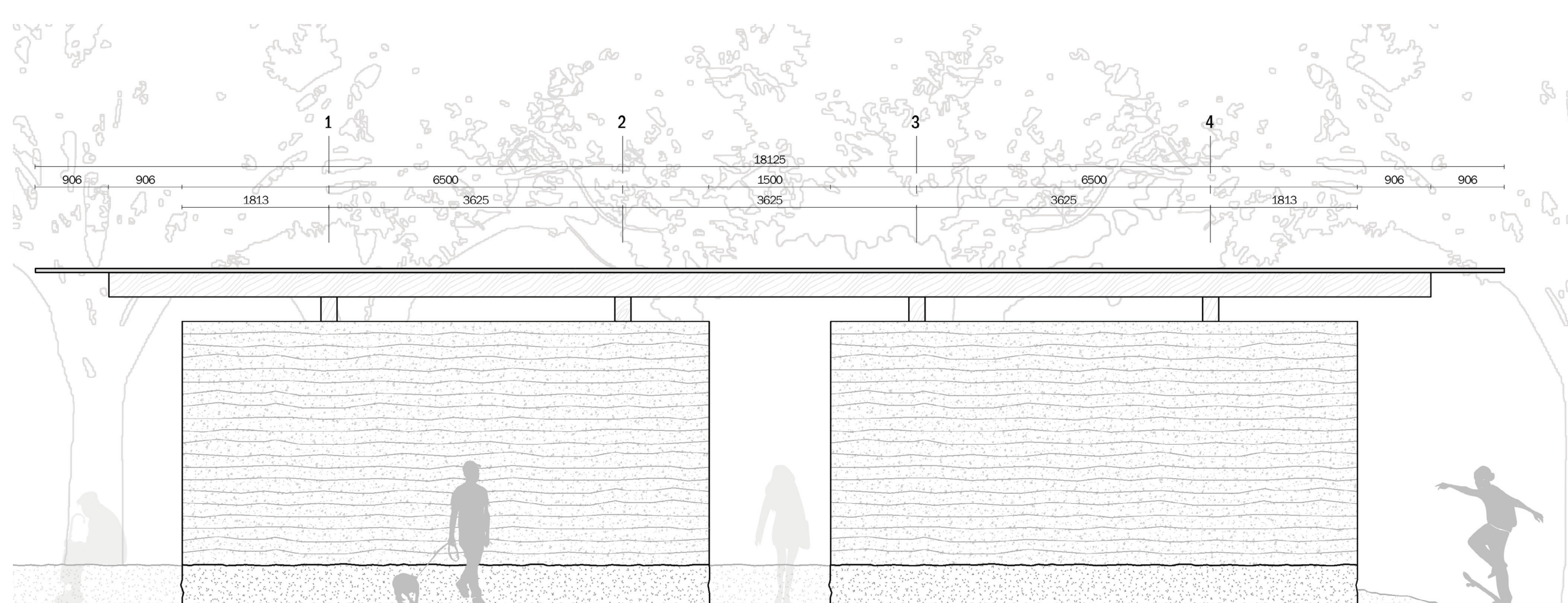
View - Direction Theaterschool



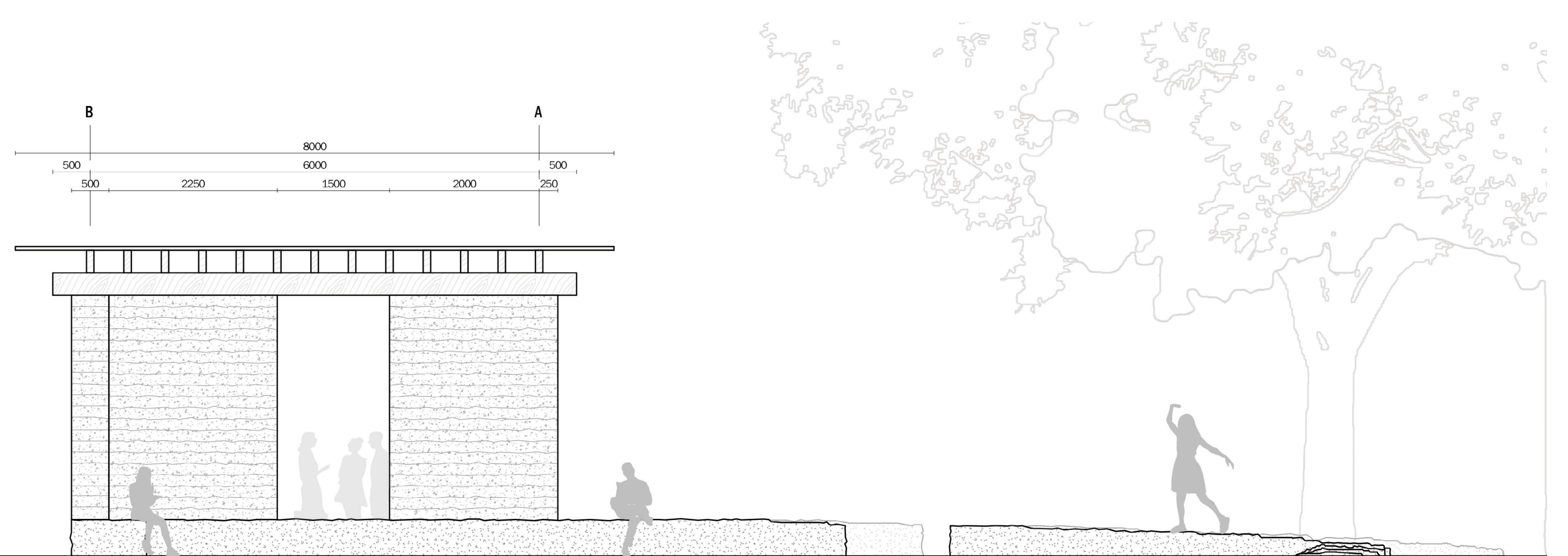
View - Direction RAvB/Codarts



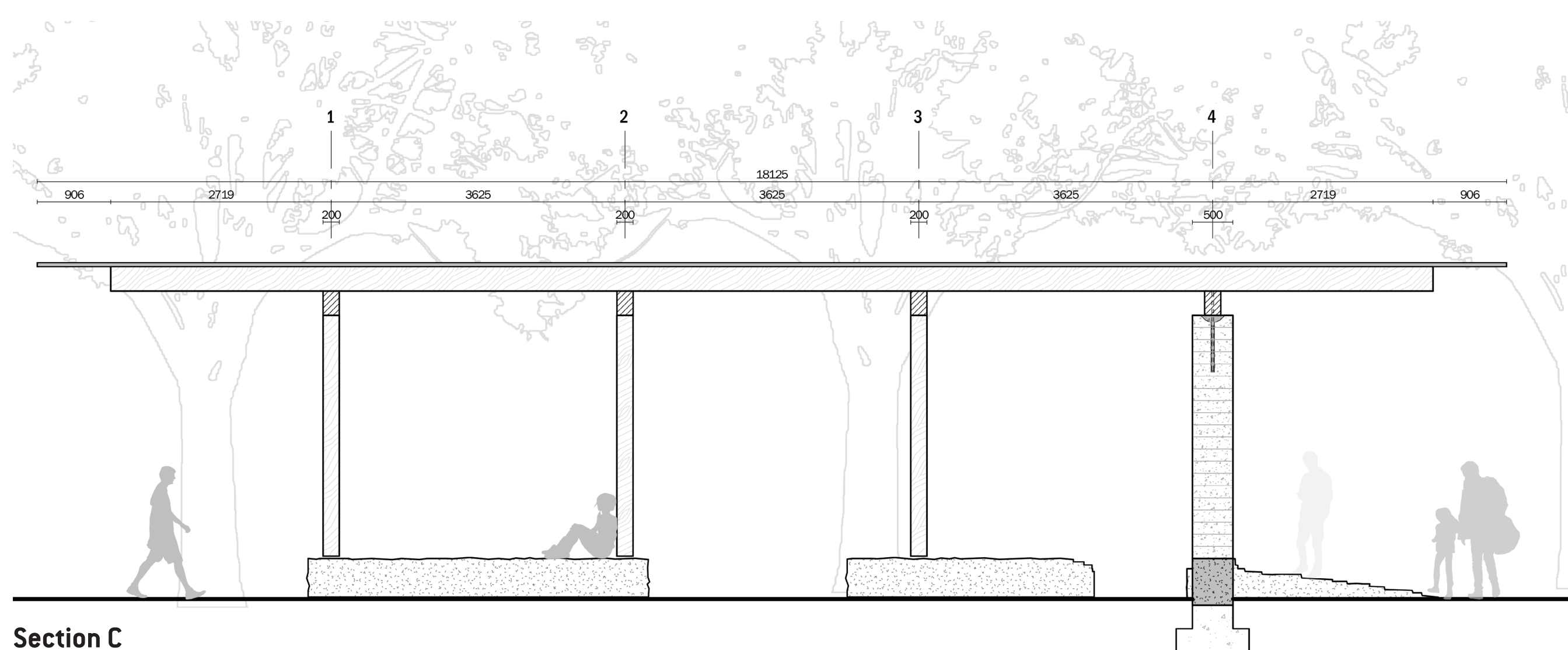
View - Inside the pavilion



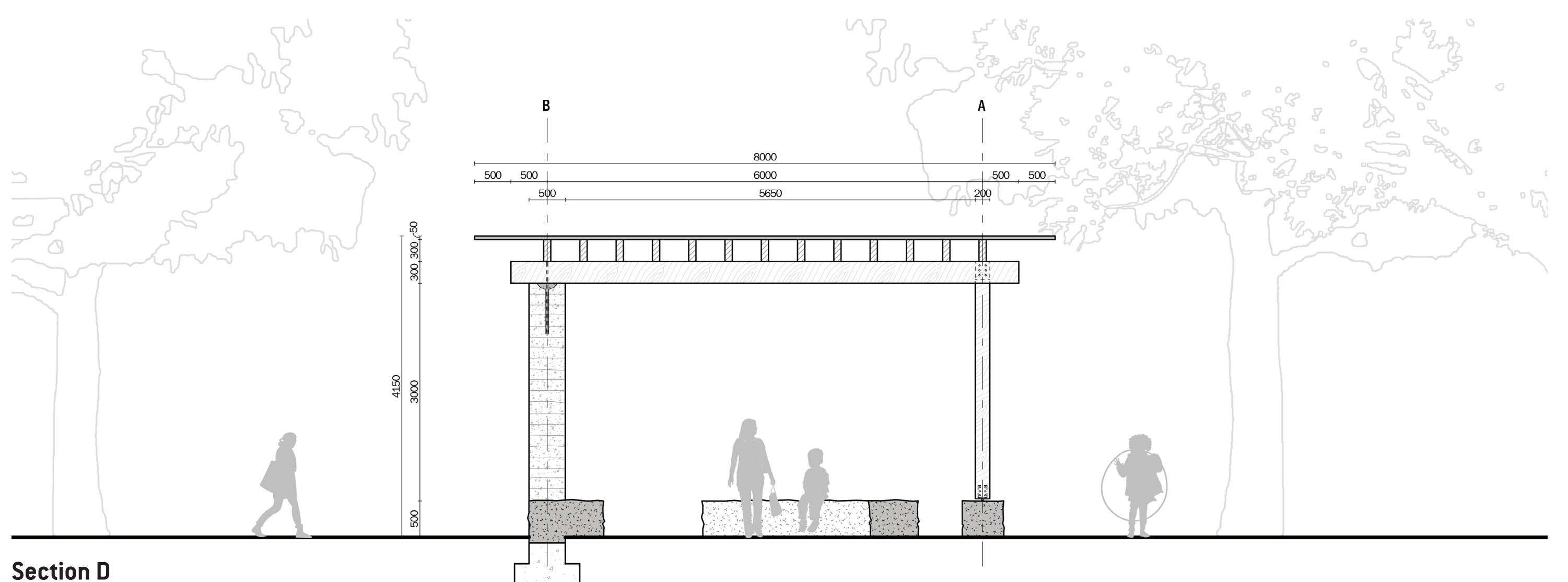
Elevation A
1:50



Elevation B
1:50



Section C
1:50



Section D
1:50