

159. The Low House's guest house, which stood behind the Low House itself, 1907



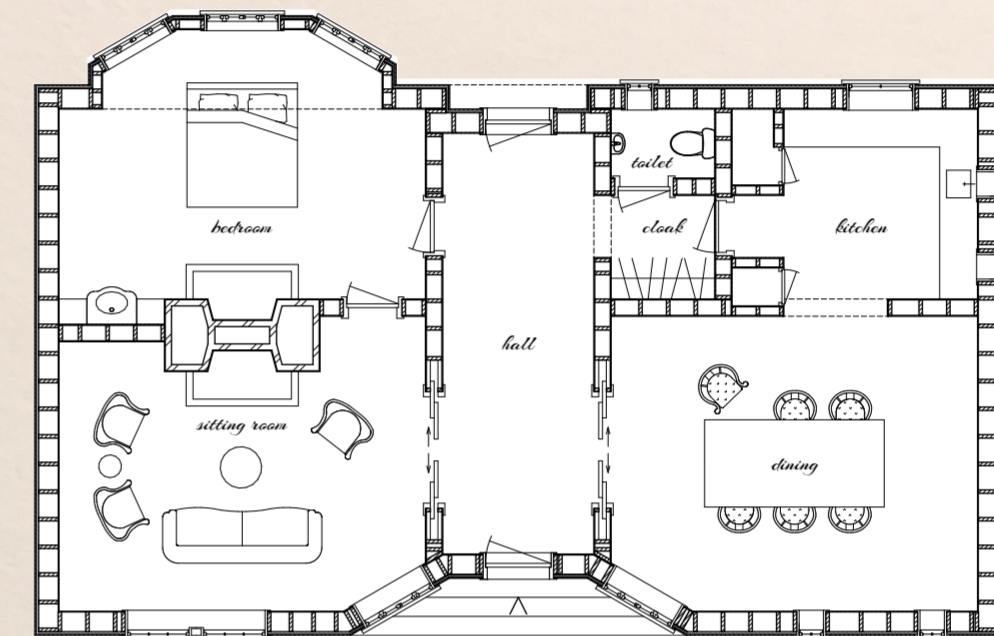
William Gilman Low Guest House  
Bristol, Rhode Island  
1904  
Demolished

*"The guest house which stood behind the Low House by McKim, Mead and White was a miniature imitation of that house in its distinctive overall form..."*<sup>3</sup> by Robert Venturi.

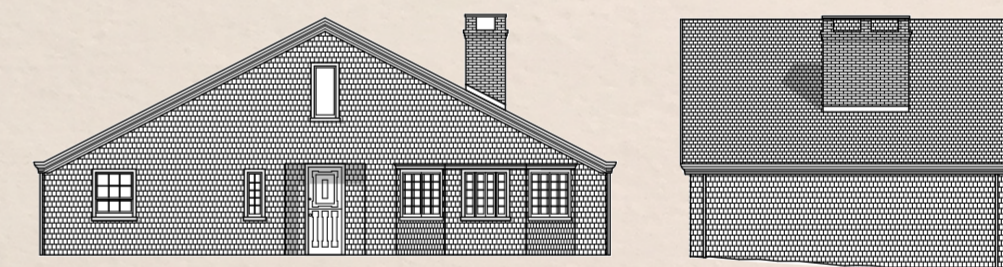
The William G. Low House, "the highlight of The Shingle Style," according to Vincent Scully. One of a kind. McKim, Mead & White closed a chapter with this. The Low House was therefore seen as the climax of The Shingle Style. However, the adjacent guest house has really stood in the Low House shadows. Only mentioned ones in a publication, the guest house does not get the recognition it deserves. The house's architecture is an example of how to design a guest house that reflects everything the main house stands for.

Where the Low House's interior was simplified through the years, the guest house's interior has remained original. The details shown here are remarkable. It gives its visitor a satisfied feeling, knowing it is staying in a just representation of its host in every true form.

<sup>3</sup> Quote obtained from the book "Complexity and Contradiction in Architecture", by Robert Venturi

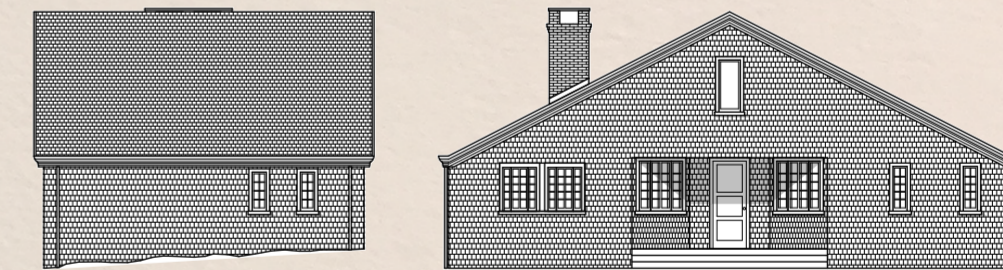


160. Floor plan



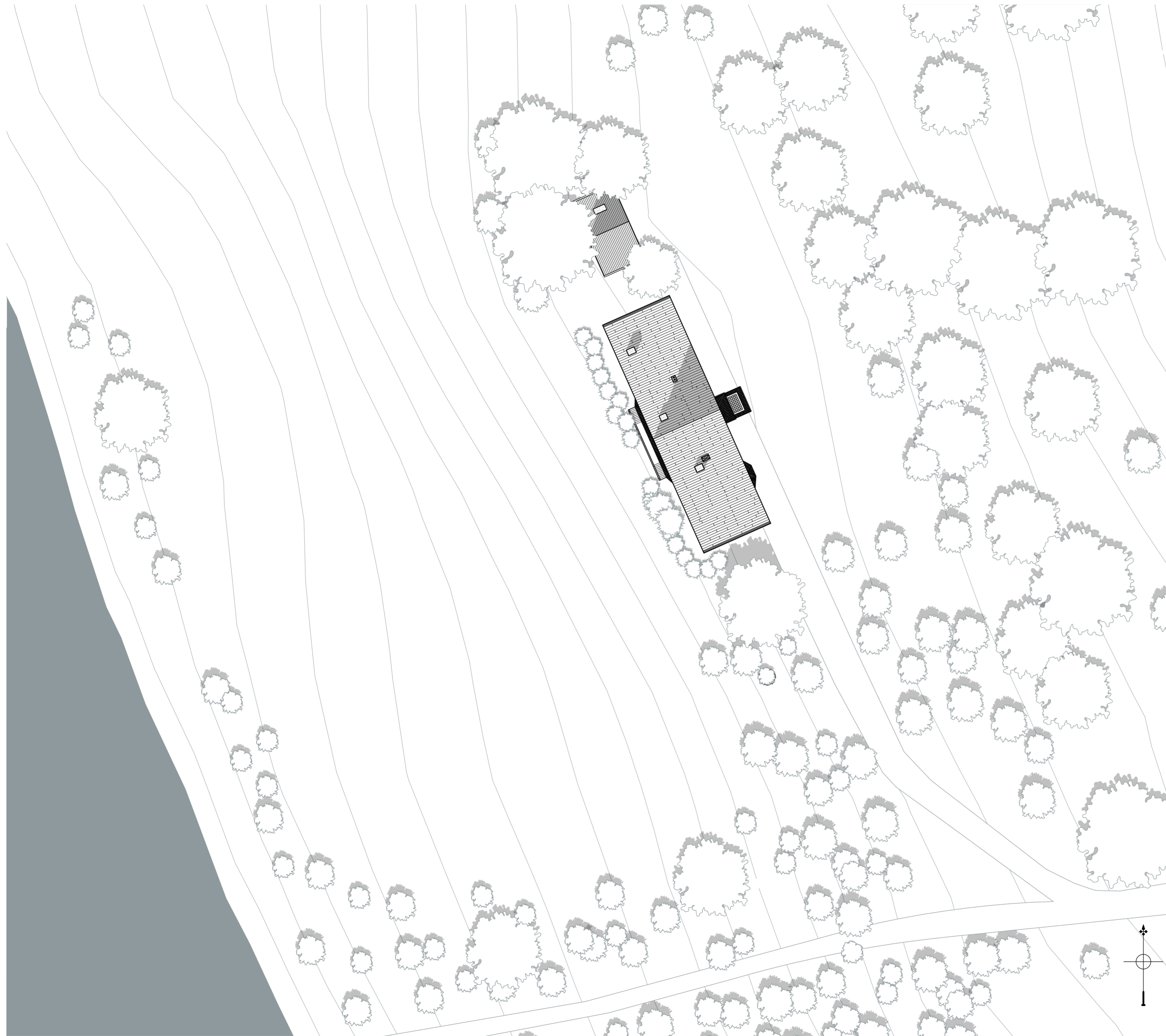
161. east-side view

162. north-side view



163. south-side view

164. west-side view



SITE PLAN  
1:500

*The Low House Guest House*

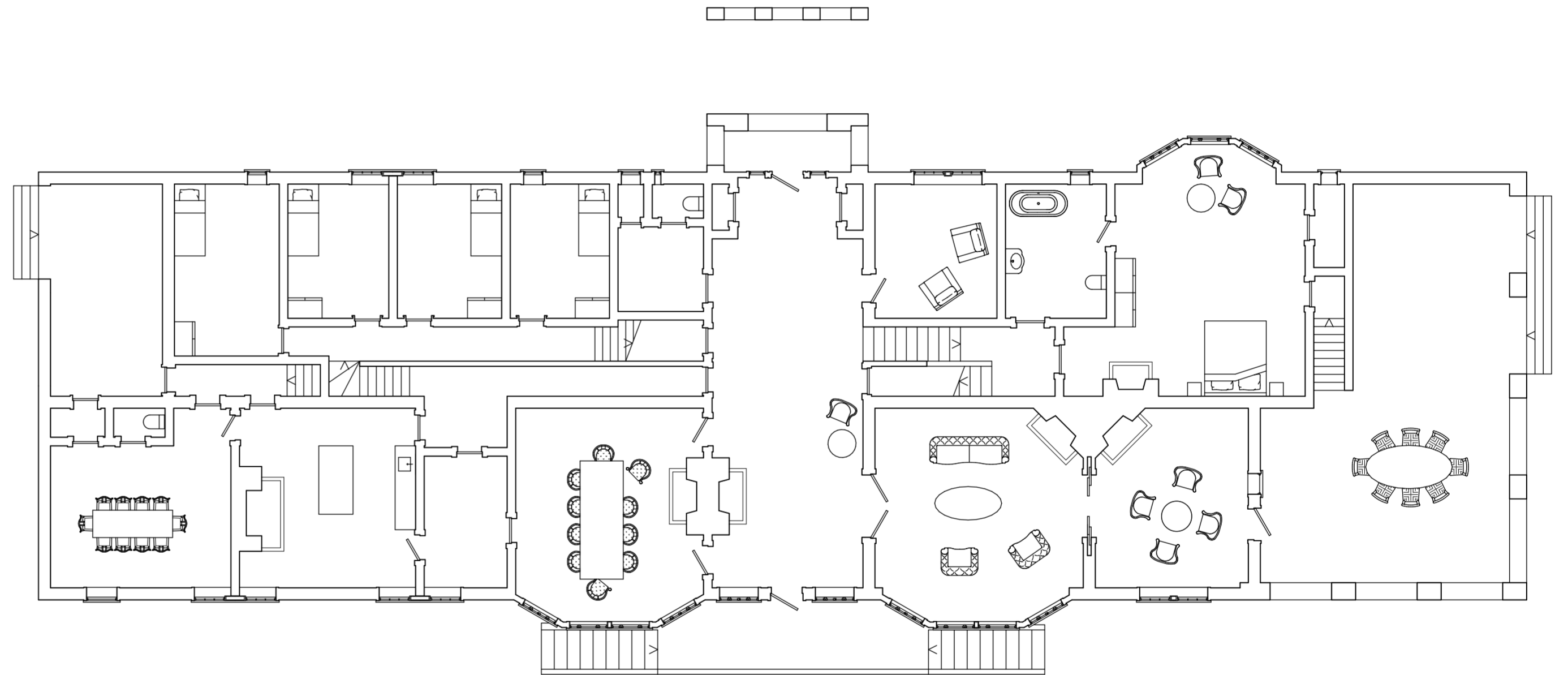
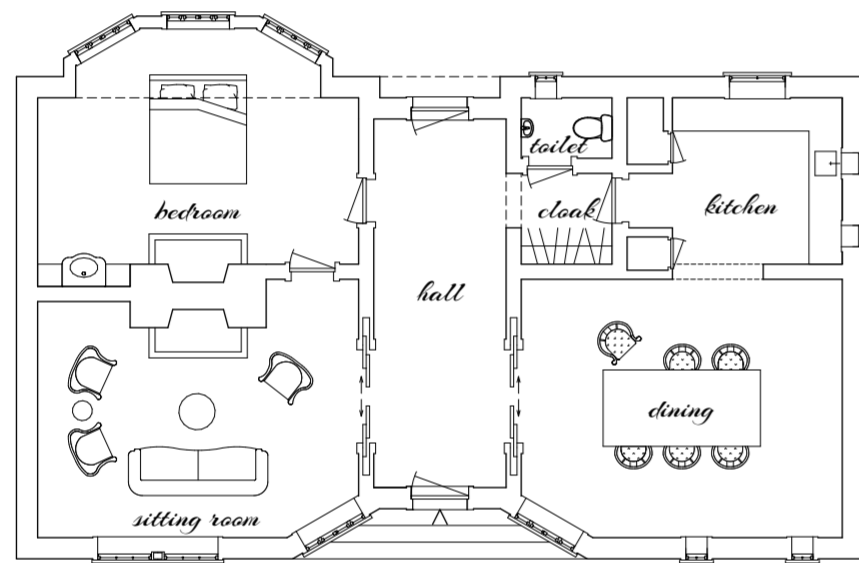
*"The guest house which stood behind the Low House by McKim, Mead and White was a miniature imitation of that house in its distinctive overall form..." by Robert Venturi.*

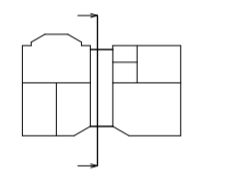
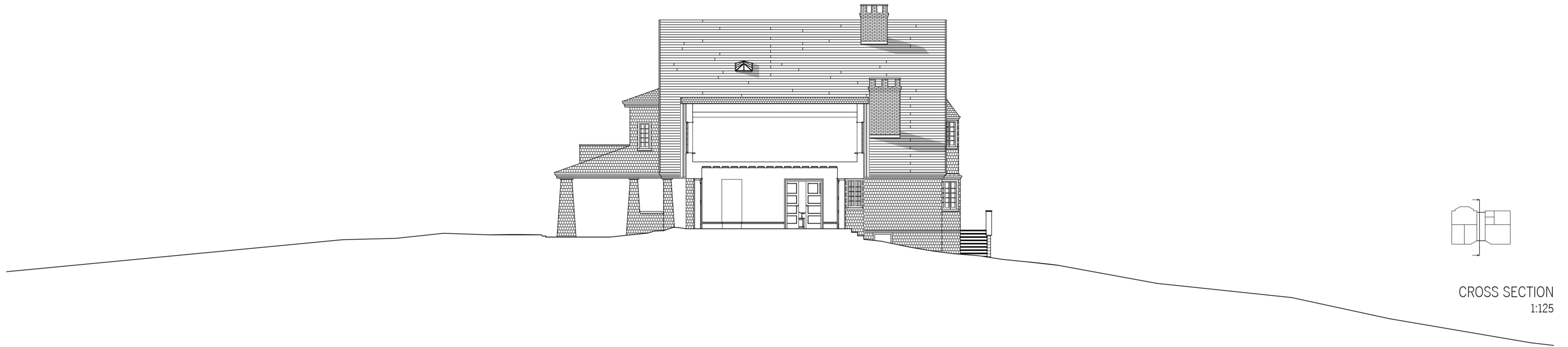
*The William G. Low House, "the highlight of The Shingle Style," according to Vincent Scully. One of a kind. McKim, Mead & White closed a chapter with this. The Low House was therefore seen as the climax of The Shingle Style. However, the adjacent guest house has remained a mystery forever.*

*Because of the little footage, where we can still see shadows of the guest house, I became obsessed with the untold story of the Low House Guest House. That one quote from Venturi may say it all about the guest house. At least enough to portray a reconstruction that could come close to the truth.*

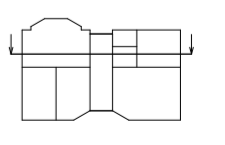
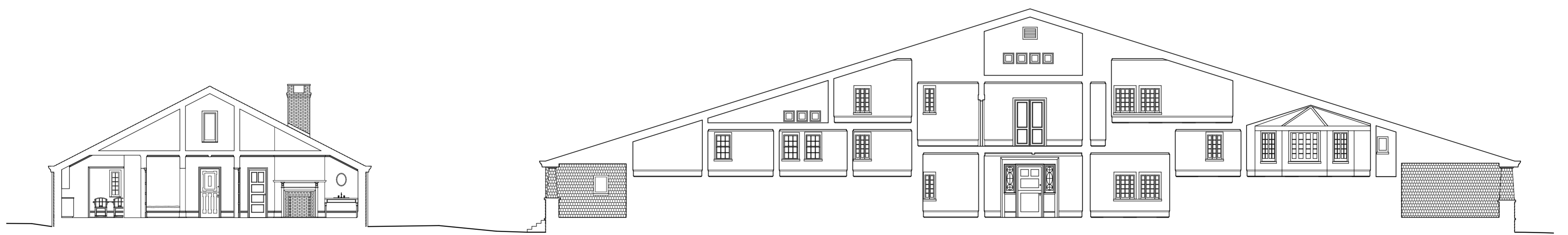
*I see the guest house as a representation of the Low House. This means that the characteristic elements can be found in the guest house. A number of photographs reinforce these thoughts. Not only these elements, but also the linking of the rooms, the use of color and materials and the shingle style I see as important factors for the reconstruction. If you see more guest houses of similar manors, Vincent Scully's quote could apply to this as well. All this makes for a design for reconstruction that convinces me of the likelihood of what the Low House Guest House may have looked like.*







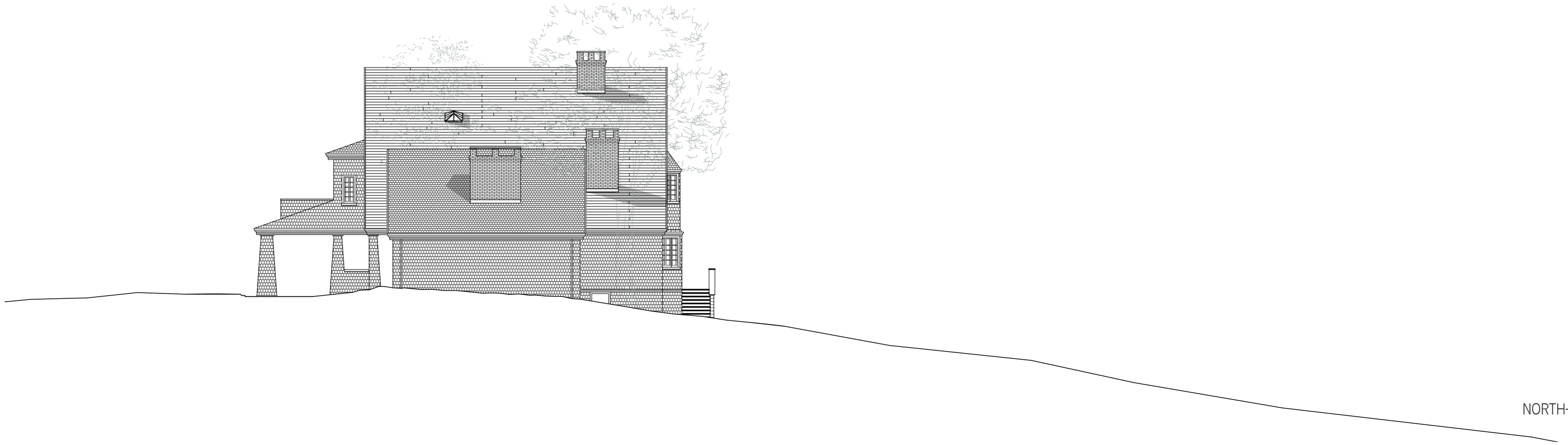
CROSS SECTION  
1:125



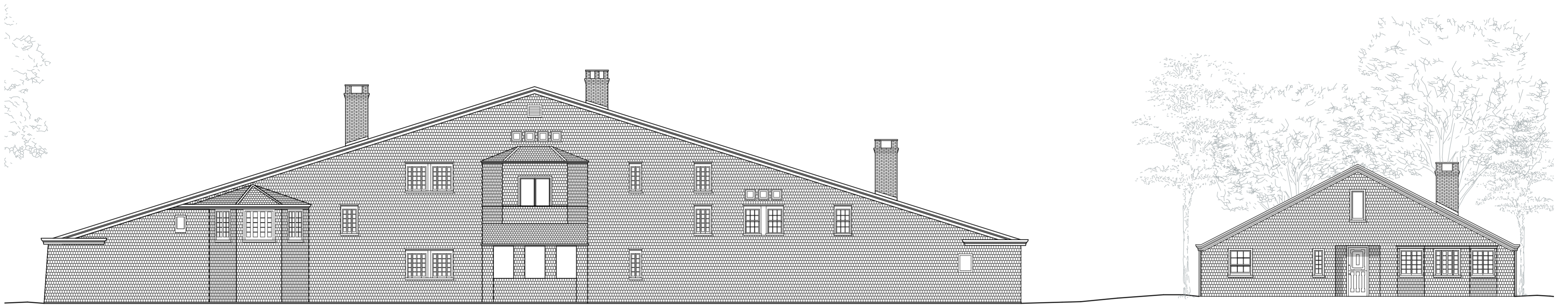
LONGITUDINAL SECTION  
1:125



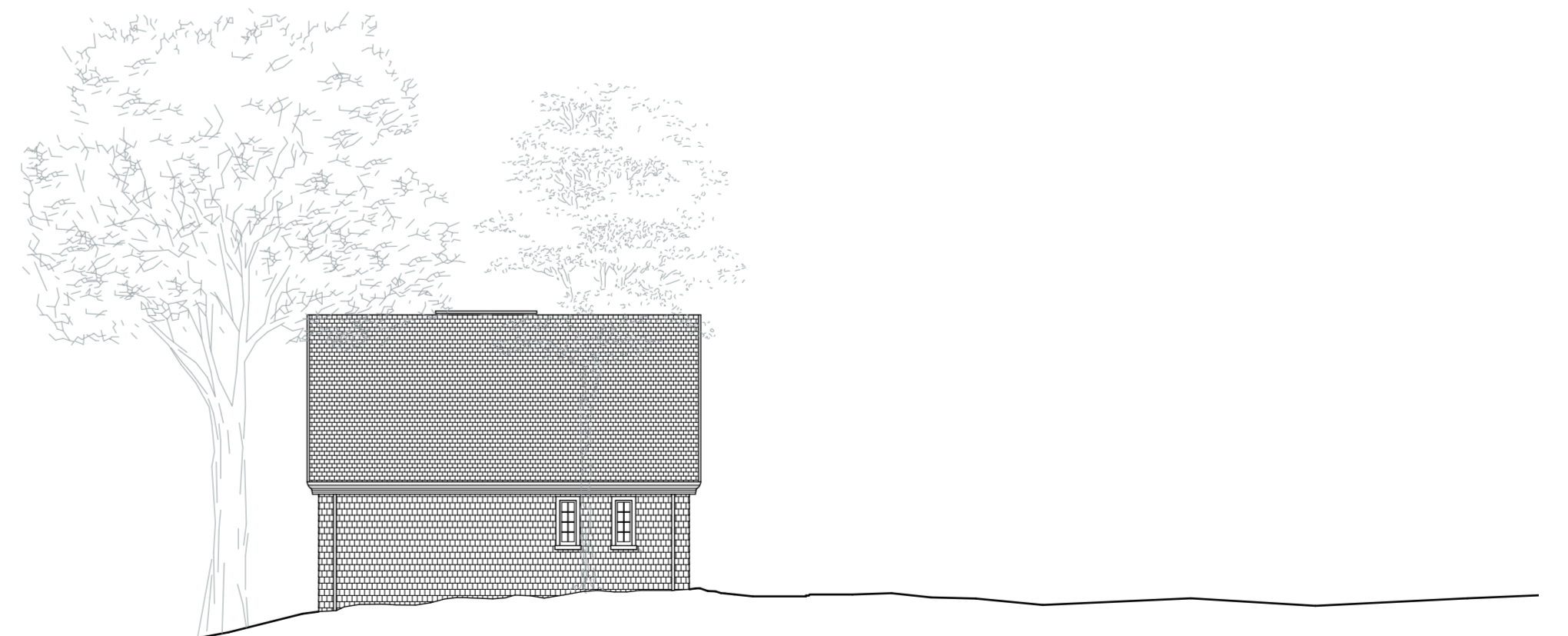
WEST-SIDE VIEW  
1:125



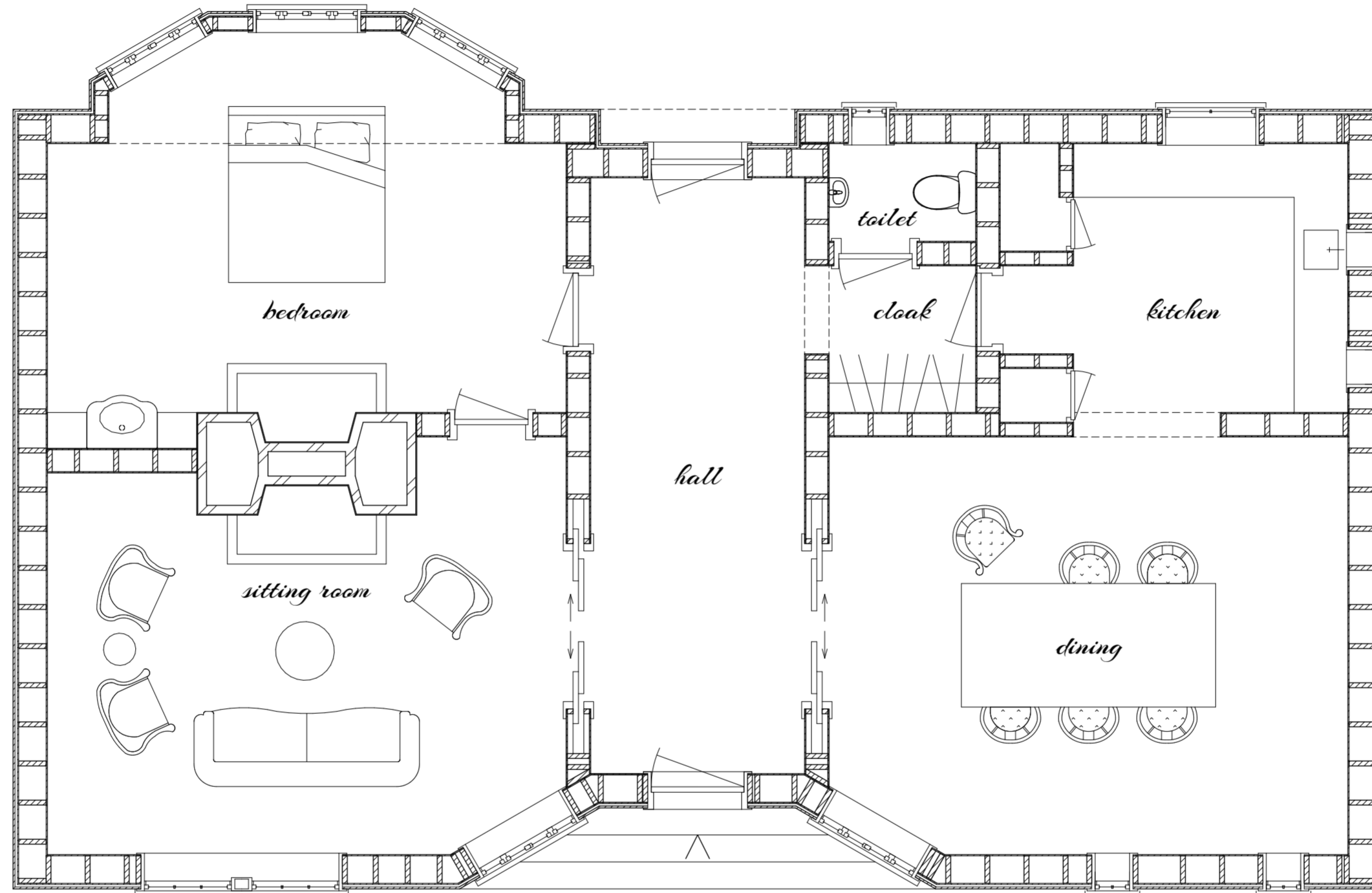
NORTH-SIDE VIEW  
1:125



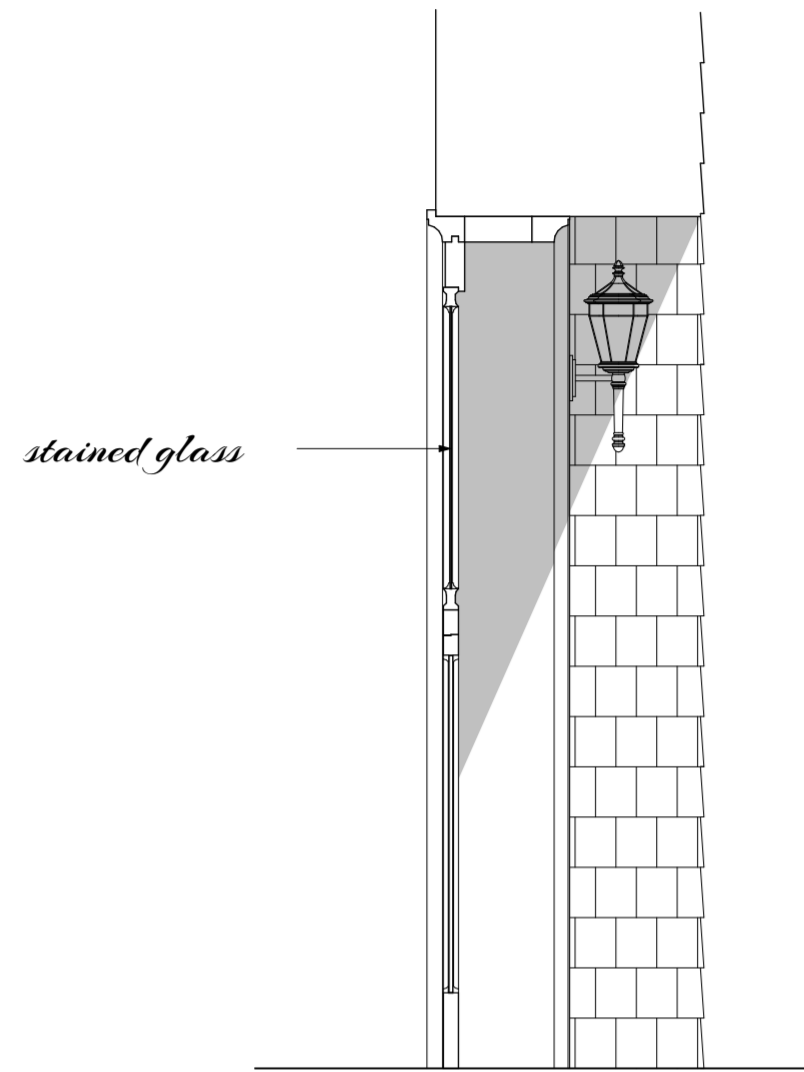
EAST-SIDE VIEW  
1:125



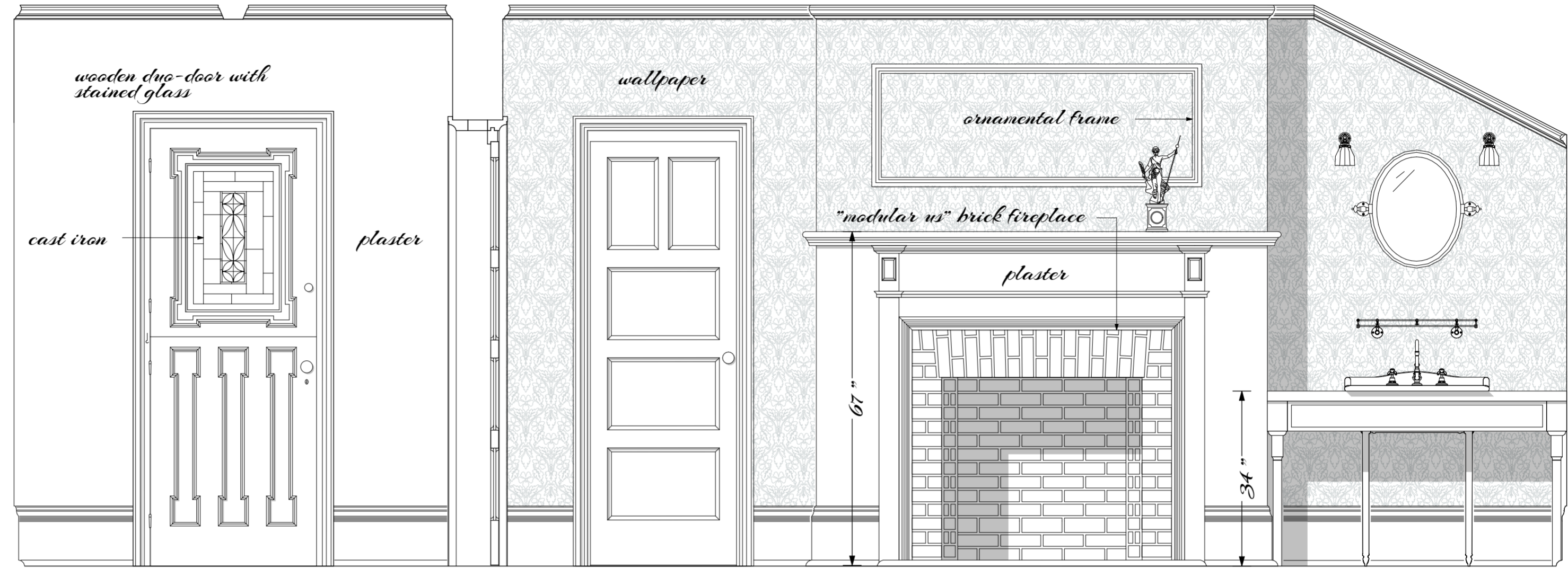
SOUTH-SIDE VIEW  
1:125



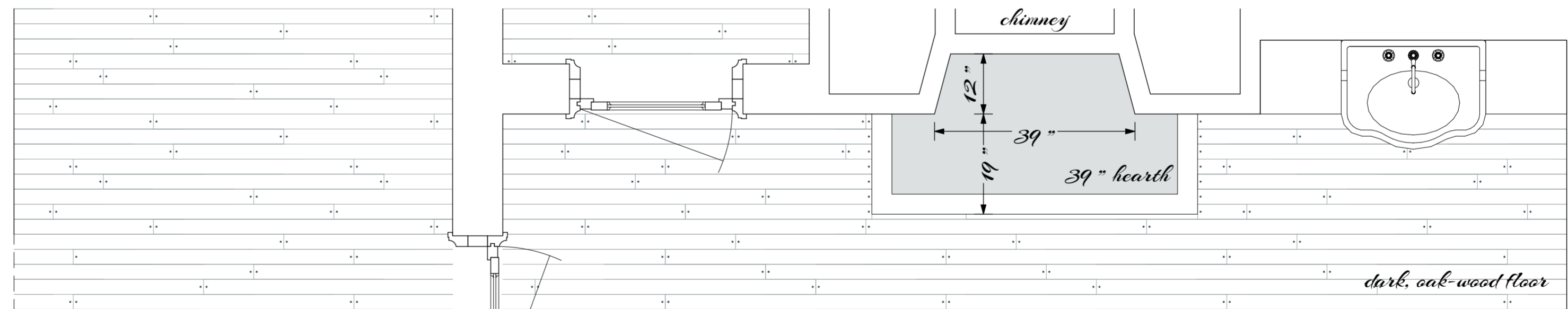




SECTION DETAIL  
1:20

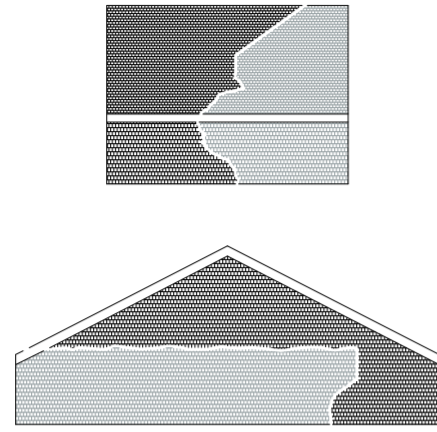


ELEVATION  
1:20

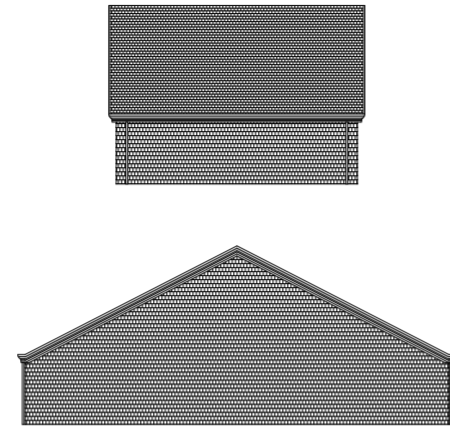


PLAN  
1:20

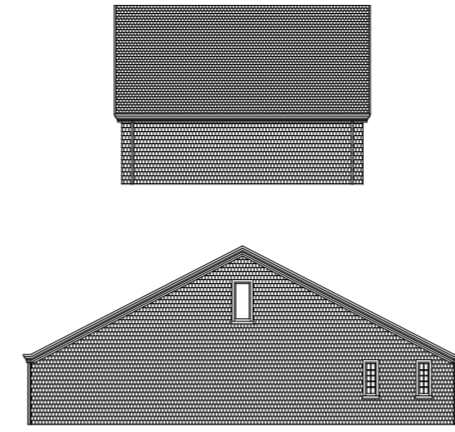
1.  
TRACING THE SHINGLES



2.  
DETERMINE ROOF MOLDINGS



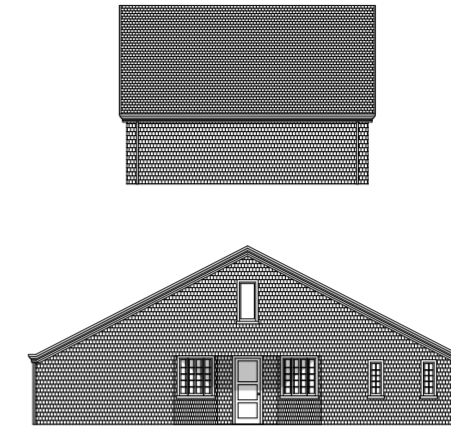
3.  
DETERMINE FACADE OPENINGS



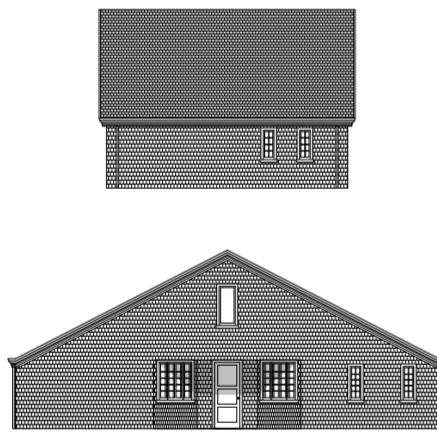
4.  
ENTRANCES & ENTRANCE HALL



5.  
AT ARRIVAL



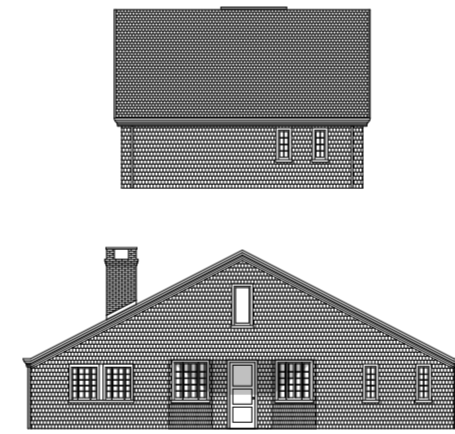
6.  
PUBLIC SPACES



7.  
PRIVATE SPACES



8.  
BEDROOM SPACIOUSNESS



9.  
COMPLETE FACADES



10.  
ENVIRONMENT INTEGRATION

