

# Take Care

## Eva Sips

The connection with nature has for centuries been viewed as positive for both your mental and physical wellbeing. In the Netherlands the phenomenon of the 'Zorg boerderij' has gained growing popularity. Yet the people who visit those farms are just that, visitors. What if you could live more permanently as part of that mutual beneficial interaction and connection between nature and agriculture?

This became the main ambition of this design: to create a place where people can live among crops, livestock, and nature. Close to their families and the right care were needed. The design of a mostly self-sufficient farming community centers around the connection between people and different easy levels of access to nature and agriculture. The houses of the residents are divided into smaller 'woon enven', making sure they can enjoy their own private space, are close to each other yet surrounded by the actual farmlands.

There are high care groups, medium care groups and low care or no care groups divided across the landscape. All groups have everything they need in their homes with the landscape and farming at their doorstep to explore in various ways.

The farming community is divided into large fields of crops managed by the farmer, smaller fields that can be managed by the residents of for example the medium or low care groups in combination with the farmer, and the courtyards and gardens the residents can use to grow crops on a small scale. Between those are rotating fields for the sheep, pigs and chickens. In-between the houses and agriculture wild flower-meadows or groups of trees are a haven for insects and other animals to find their home on the farm making for a thriving big eco system.

Fruit and en min 1,9 gr x 365 days x 500 mensen = 2.375.000 gr  
Open production: 23.720.000 (binnen) = 1.623.500 gr = 1.424,5 kg  
9.964,5 kg / 50 kg per tree = 200 trees x 5 m<sup>2</sup> = 1000 m<sup>2</sup> for the orchard

Vegetables 131 gr x 365 days x 500 people = 23.907.500 gr  
Open production 23.907.500 (binnen) = 14.346.500 gr = 14.346 kg  
14.346 kg / 4 vegetables category = 3.586 kg per category  
Cabbage vegetables 2.390,8 kg needed / 2,4 = 996,2 m<sup>2</sup>  
Leafy vegetables 2.390,8 kg needed / 3,7 = 646,2 m<sup>2</sup>  
Leafy vegetables 2.390,8 kg needed / 6,1 = 392,0 m<sup>2</sup>  
Potato 2.390,8 kg needed / 3,65 = 655,0 m<sup>2</sup>  
Pul vegetables 2.390,8 kg needed / 1,8 = 1.328,2 m<sup>2</sup>

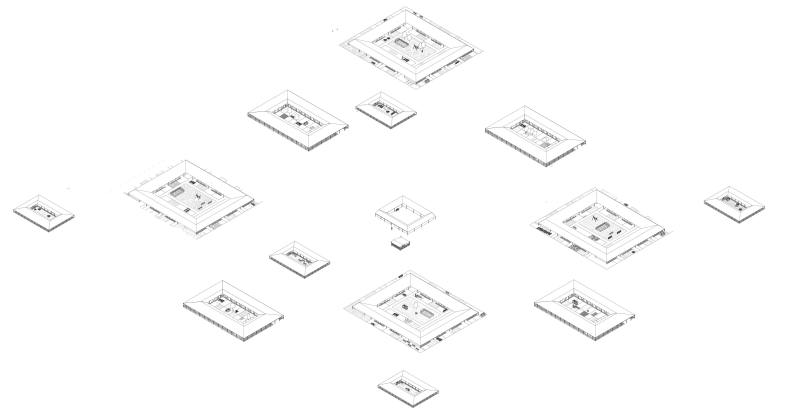
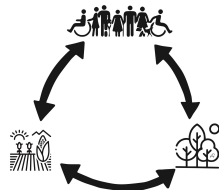
4.194,45 m<sup>2</sup>  
4.194,45 m<sup>2</sup> x 6 = 25.166,7  
700 m<sup>2</sup> average of space needed per category

Eggs 13 gr x 365 days x 500 people = 2.372.500 gr  
Open production 23.720.000 (binnen) = 1.423.500 gr = 1.424 kg  
Eggs 1.424 kg / 0,006 = 237,3 kg / 237,3 / 1000000 = 1.423,5 kg  
Chickens 2,5 kg per week per 1,5 m<sup>2</sup> outside space  
2.372,5 kg per week per 1,5 m<sup>2</sup>  
1.423,5 / 100 = 14,235 m<sup>2</sup>

Grain 194 gr x 365 days x 500 people = 35.405.000 gr  
Open production: 35.405.000 (binnen) = 21.243,00 gr = 21.243 kg  
Grain: 10.000 kilogram per 1 ha  
21.243 kg / 10.000 = 2,12 ha

Sugar Beets 50 gr x 365 days x 500 people = 5.475.000 gr  
Open production: 5.475.000 (binnen) = 3.285,000 gr = 3.285 kg  
Sugar Beets 1,65 kg per 1 m<sup>2</sup> 3.285 / 1,65 = 2.005,1 m<sup>2</sup>

Oil 22 gr x 365 days x 500 people = 4.015.000 gr = 4.015 kg  
Open production: 4.015.000 (binnen) = 3.441,428 = 3.441 liter  
Rapeseed: 1.120 liter per 1 ha = 0,123 liter per 1 m<sup>2</sup>  
3.441 / 0,123 = 27.928 m<sup>2</sup> = 2 (not all pure oil) = 13,764

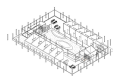


## CONCEPT

TYPE SIZE

A. SMALL

RESIDENTS DIAGRAM



CARE GIVERS PLAN



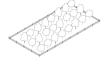
## ARCHITECTURE

TYPE SIZE

3. SMALL

CROPS

1. Fruit trees and bushes



2. Herbs (in gardens)



3. Animals



## AGRICULTURE

TYPE SIZE

I. SMALL

TYPES

I. Insect hotels



II. bird houses



III. Groups of trees and bushes



## NATURE

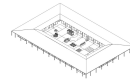
TYPE SIZE

B. MEDIUM

RESIDENT DIAGRAM



CARE GIVERS PLAN



TYPE SIZE

2. MEDIUM

CROPS

1. leafy



2. cabbage



3. fruity



4. potato



5. pod



6. root



TYPE SIZE

II. MEDIUM

TYPES

I. Wooded banks



II. wildflower meadows



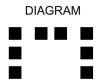
III. Groups of trees and bushes



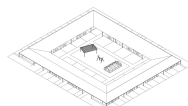
TYPE SIZE

B. LARGE

RESIDENTS DIAGRAM



CARE GIVERS PLAN



TYPE SIZE

1. LARGE

CROPS

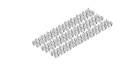
1. Rapeseed



2. Wheat/grain



3. Sugarbeet



TYPE SIZE

III. LARGE

TYPES

I. Car roads

DIMENSIONS

4,5 m



II. Pedestrian paths

3 m



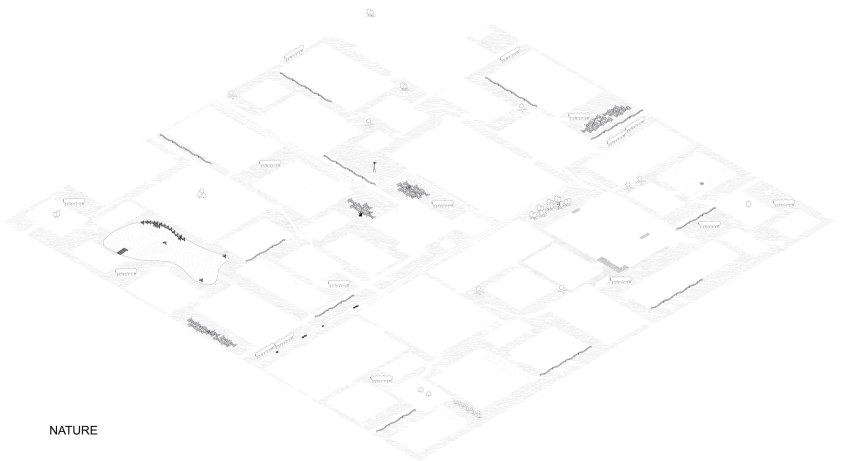
III. Ditches

2,5 m



## AGRICULTURE

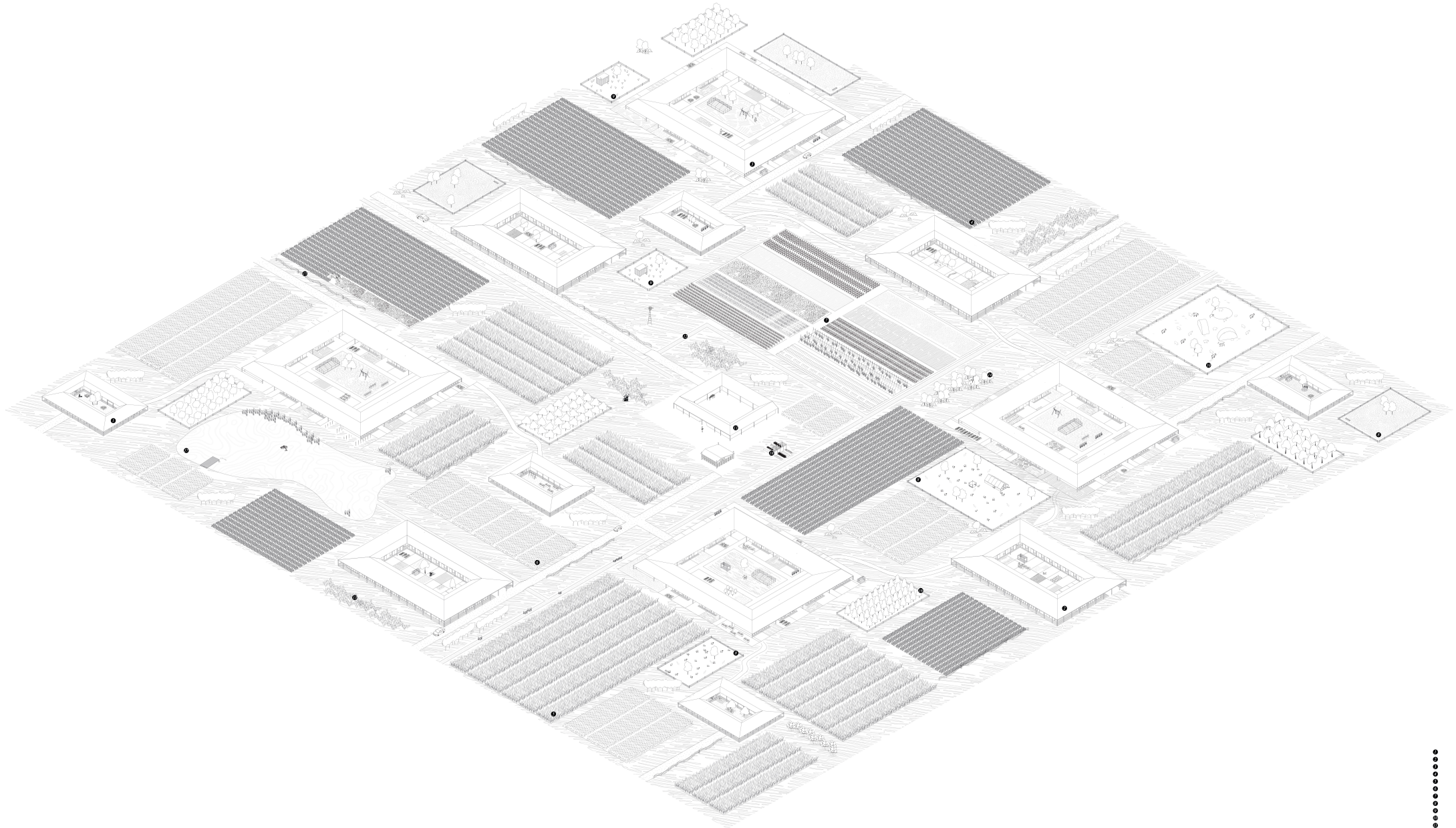
## ARCHITECTURE



## NATURE

# Take Care

Eva Sips



TOTAL PLAN

- TYPE A HIGH CARE HOUSES
- TYPE B MEDIUM CARE HOUSES
- TYPE C LOWING CARE HOUSES
- SUGAR BEET FIELDS
- WHEAT FIELDS
- RAPESEED FIELDS
- POTATINE CROP FIELDS
- PEST FIELDS
- CHICKEN FIELDS
- PIG FIELDS
- DITCHES
- WILD FLOWER MEADOWS
- CLUSTER OF TREES
- WOOD WALLS
- FRUIT ORCHARD
- POND
- HERB GARDEN

