

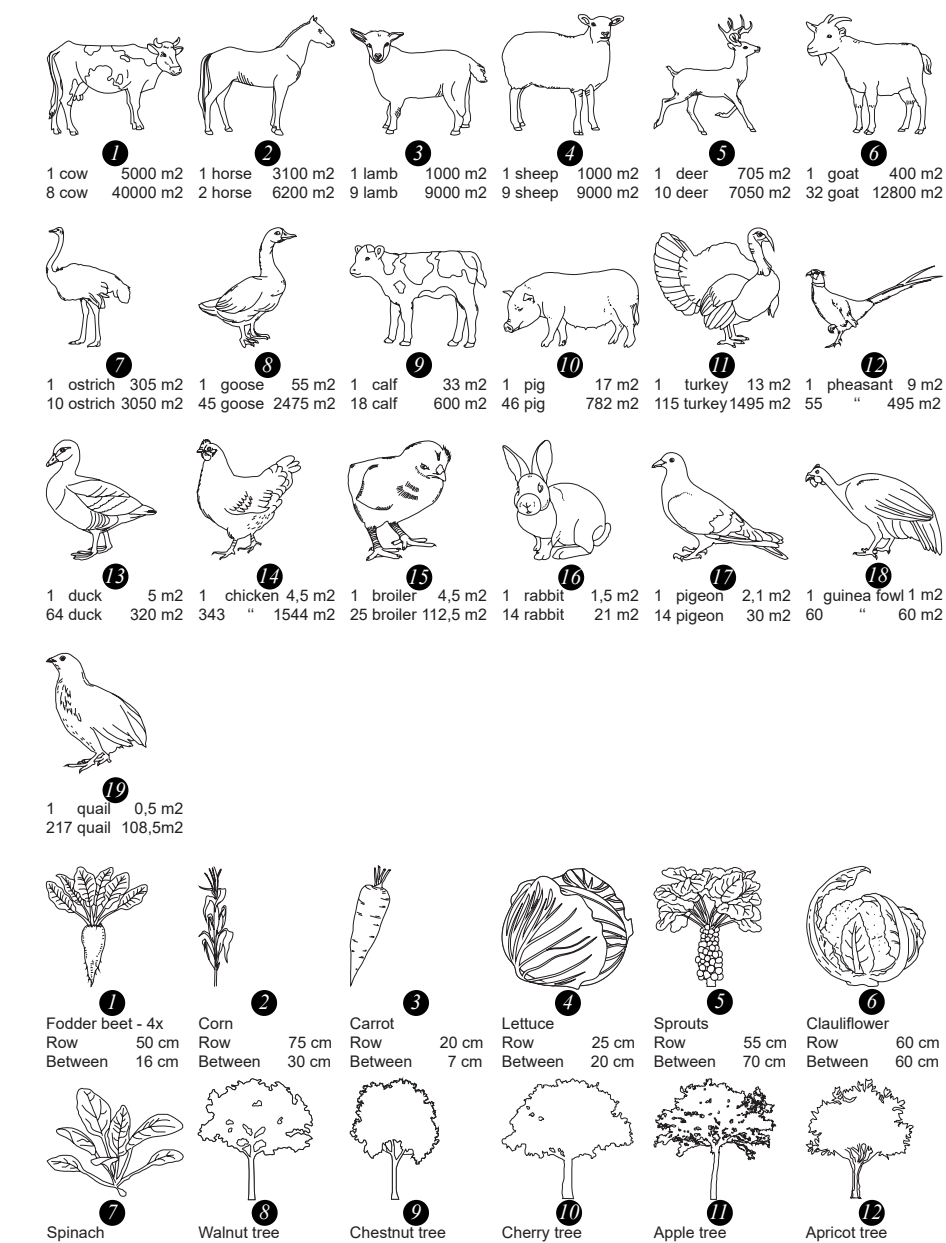
ANIMAL FARM

LYNN HEEREN

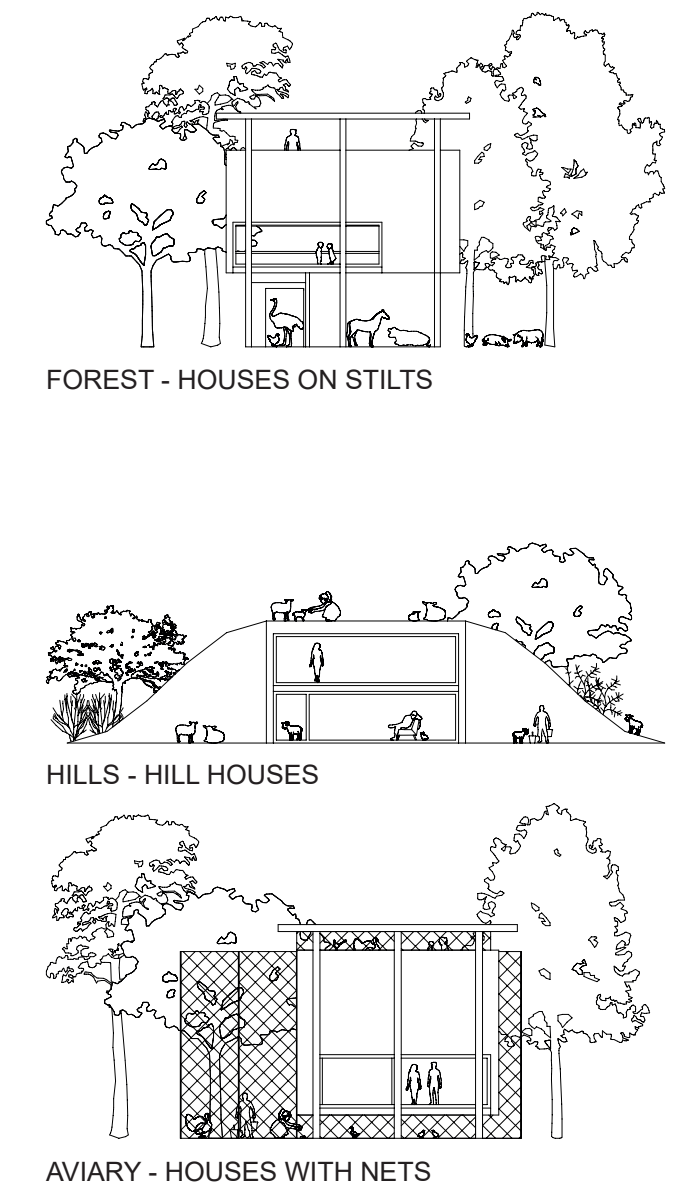
Animal farm describes a living environment in which the relation between humans and animals is brought to life in a balanced way. Cohabitation in a heterarchy with a multi-faceted production of meat. Within this society, animals have the largest amount of space so they can walk freely in nature. As a result animals and humans will be in balance and happier. These animals live in landscapes that match their needs in their natural habitats to live happily. The arrangement of the three different landscapes creates biodiversity and a variety of ecosystems.

The architecture is based on the three landscapes. Shelters for animals and the houses for humans are combined in each type of architecture. The circular routing creates a separation between the landscapes. The main buildings on the periphery are central located and the production process can be followed. A process of cohabitation with animals, slaughtering and consuming where residents voluntarily help in the slaughter house, the restaurant and the shop. To create a full experience of the process and the relation between humans and animals.

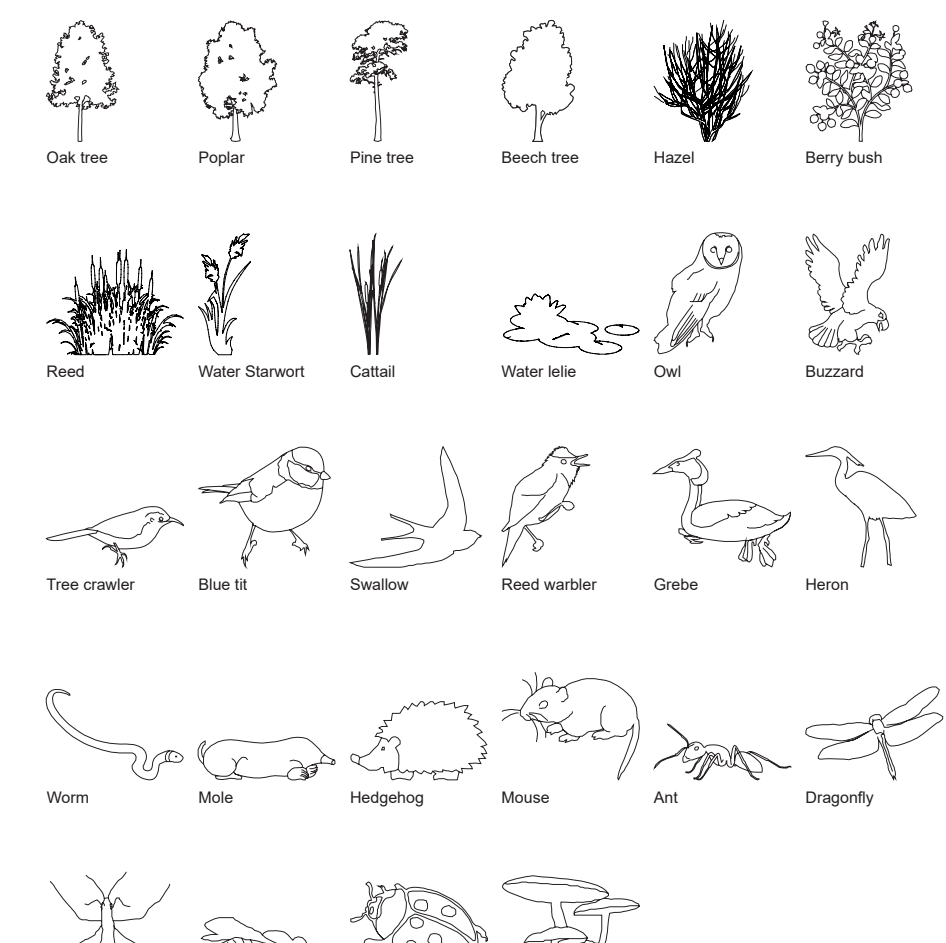
CONCEPT



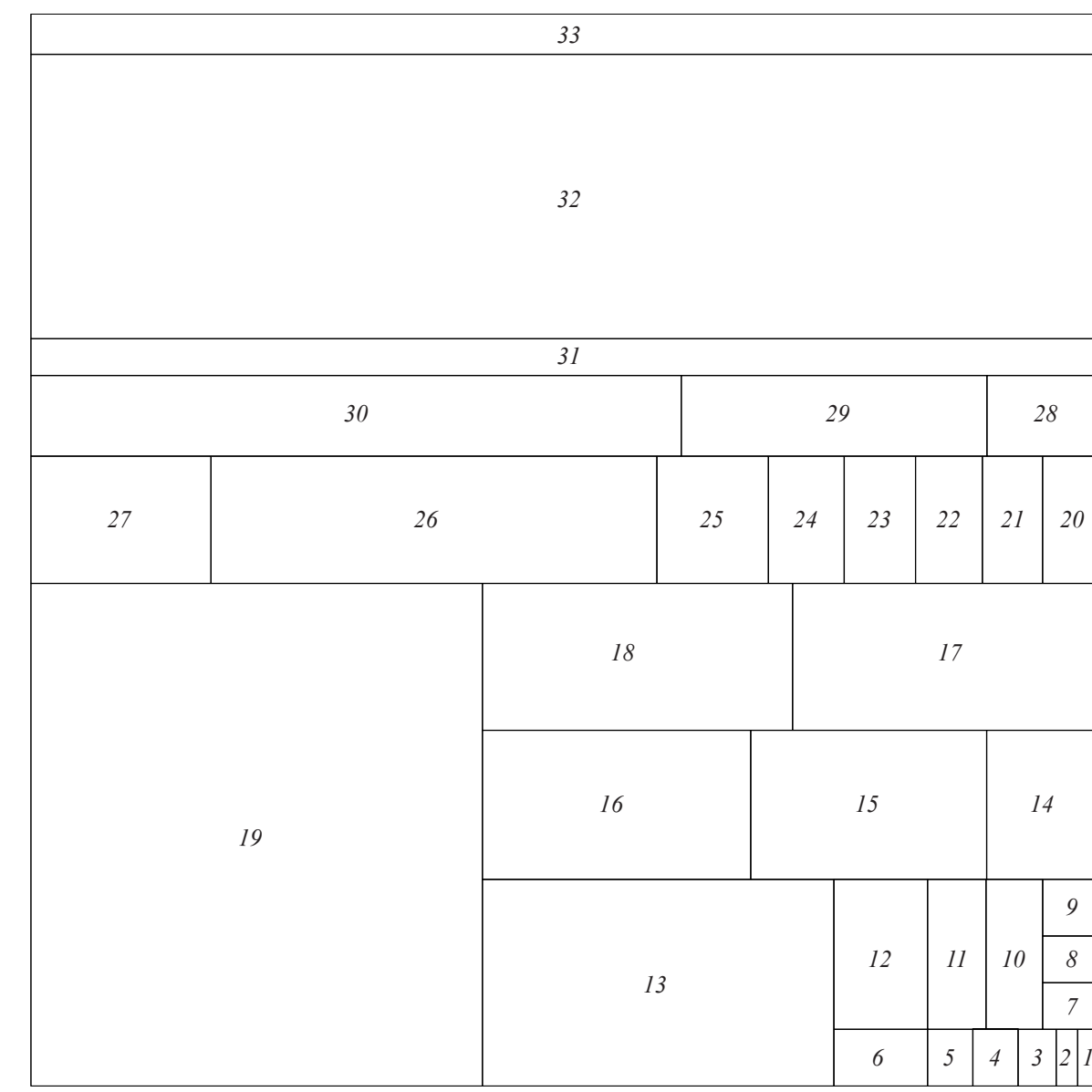
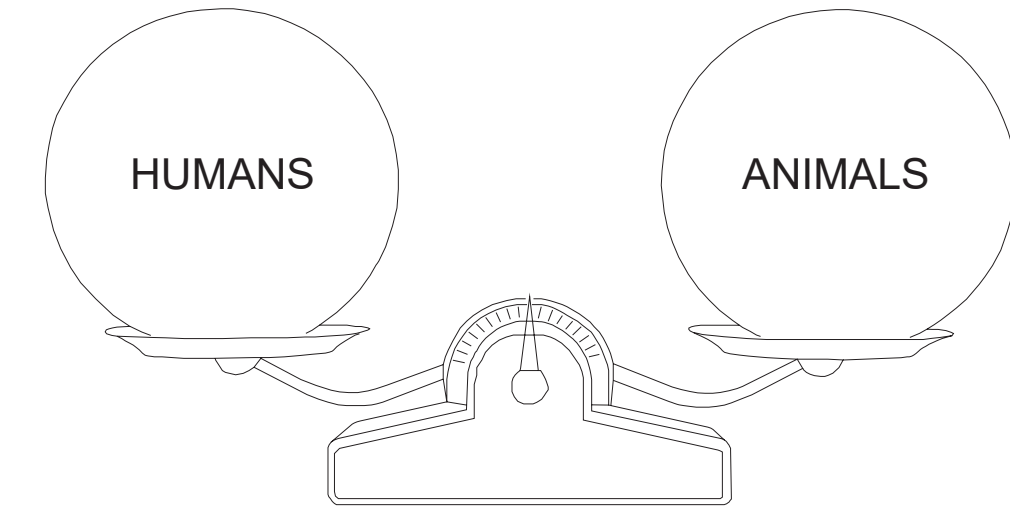
ANIMALS - CROPS - TREES AGRICULTURE



HOUSING - SHELTER CONCEPT ARCHITECTURE

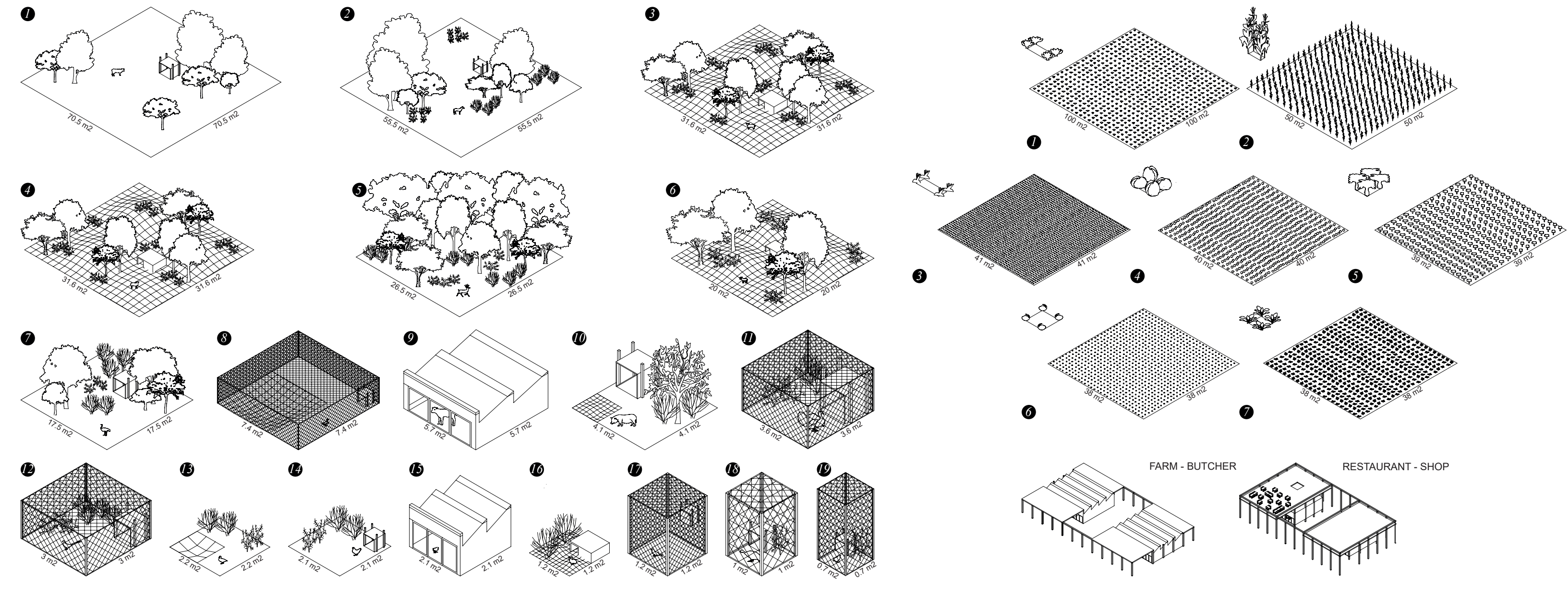


TREES - BUSHES - ANIMALS NATURE

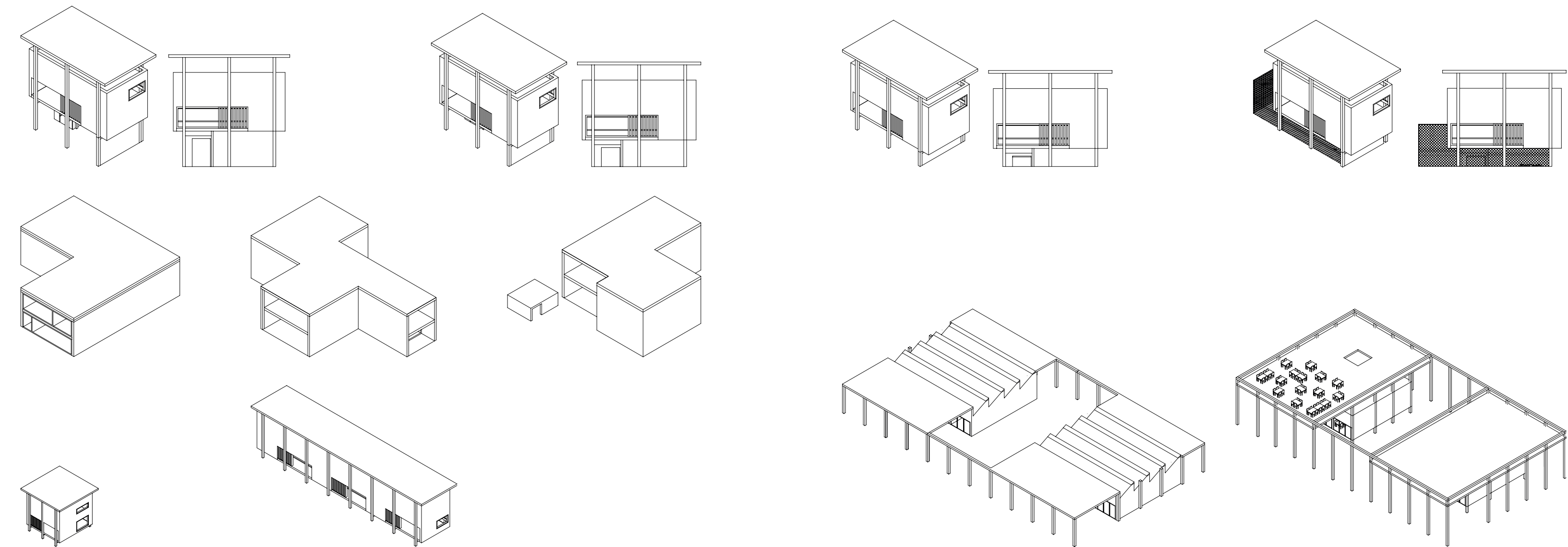


● Pigeon	30 m2	● Sheep	9000 m2
● Rabbit	21 m2	● Cow	40000 m2
● Guinea fowl	60 m2	● Spinach	1350 m2
● Quail	68.5 m2	● Cauliflower	1350 m2
● Broiler	112.5 m2	● Sprouts	1500 m2
● Pig	782 m2	● Lettuce	1600 m2
● Duck	320 m2	● Carrot	1700 m2
● Pheasant	495 m2	● Corn	2500 m2
● Calf	600 m2	● Fodder beet	10000 m2
● Turkey	1495 m2	● Animal farm	4040 m2
● Chicken	1544 m2	● Houses with nets	1644 m2
● Goose	2475 m2	● Hill houses	4344 m2
● Goat	12800 m2	● Still houses	9243 m2
● Ostrich	3050 m2	● Water	6950 m2
● Horse	6200 m2	● Public green	53716 m2
● Deer	7050 m2	● Pavement	7617 m2
● Lamb	9000 m2		

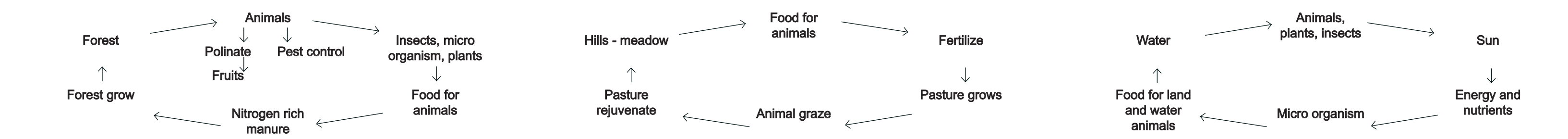
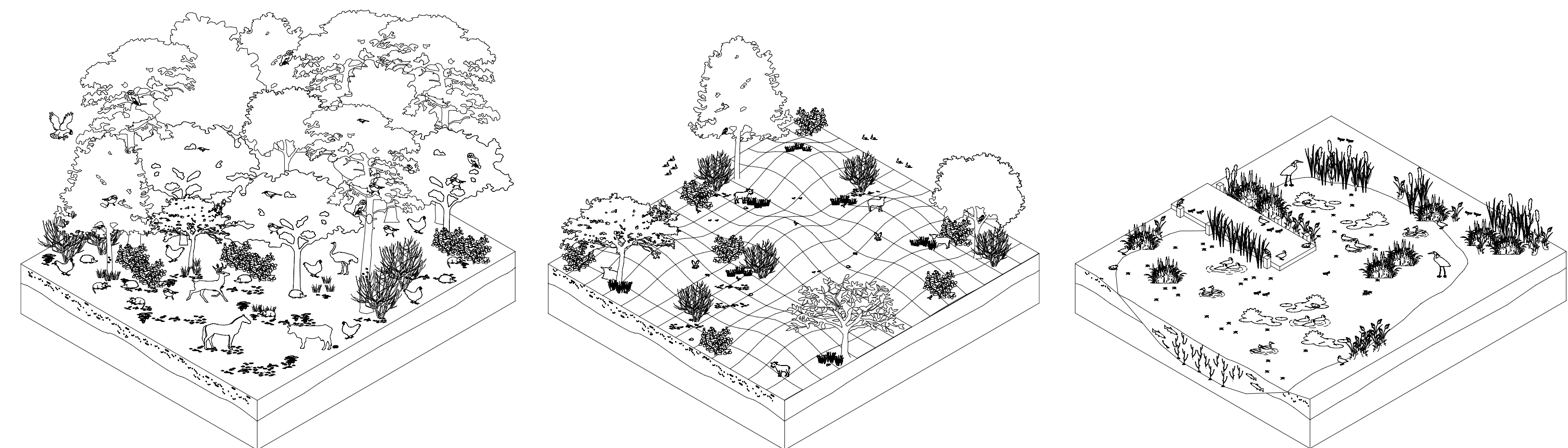
PLOT COMPONENTS



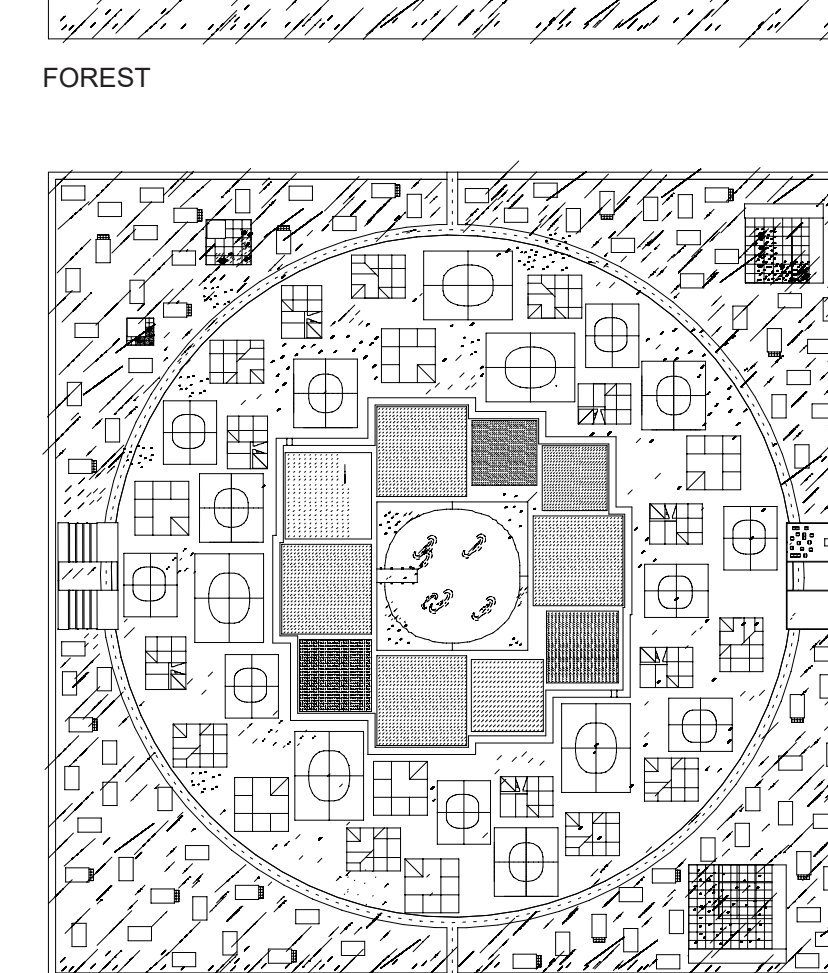
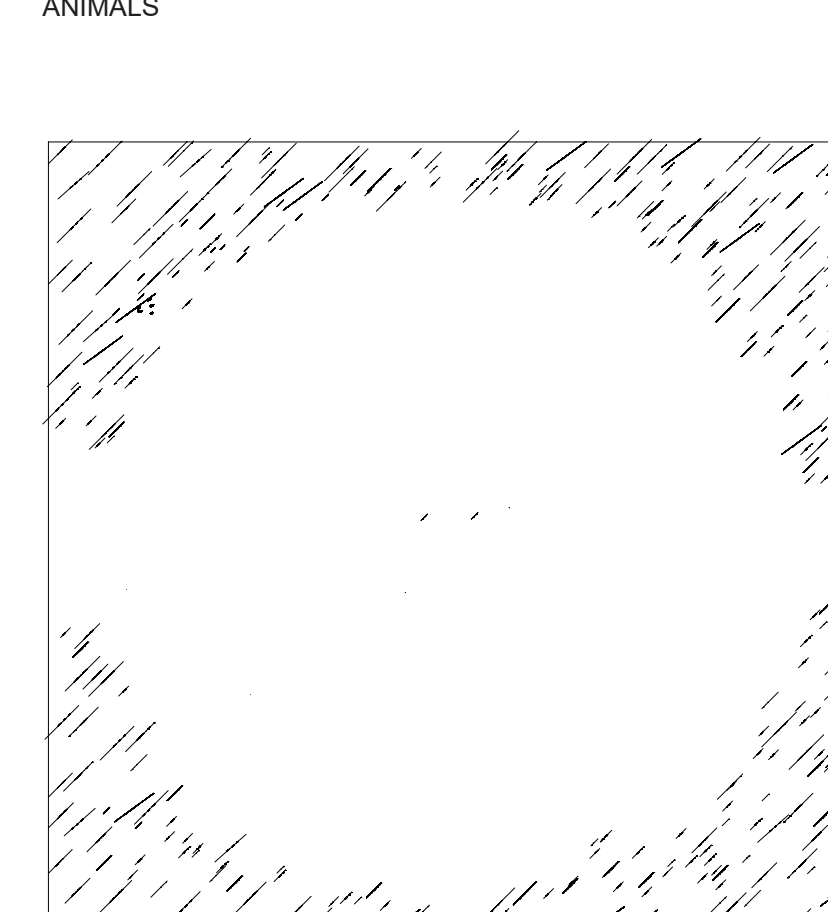
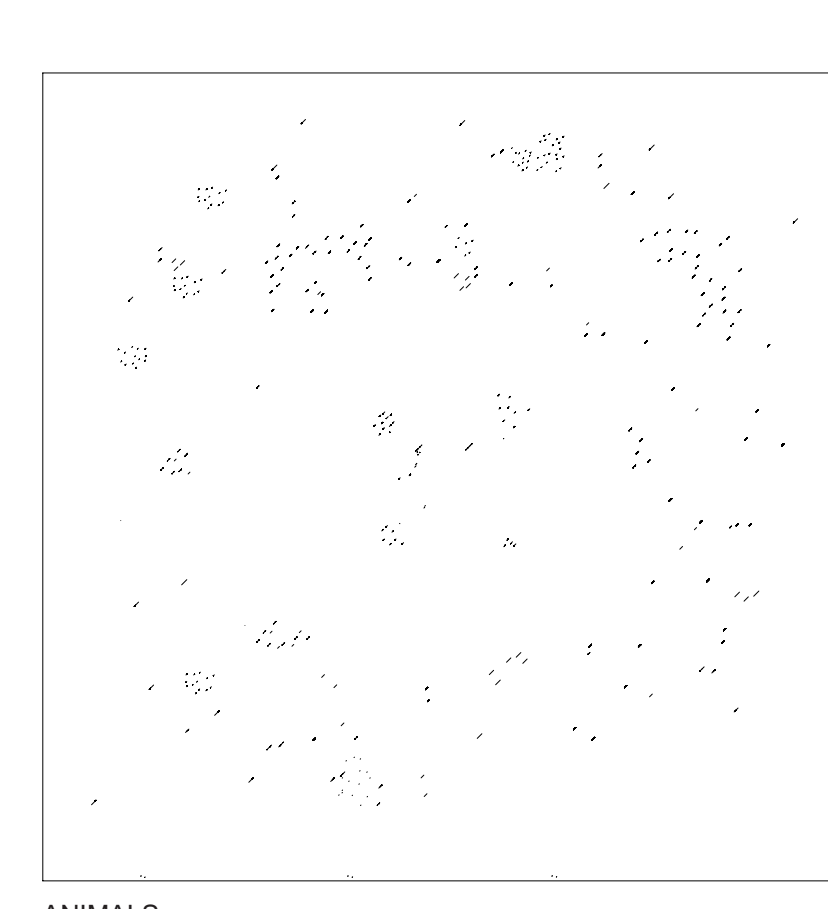
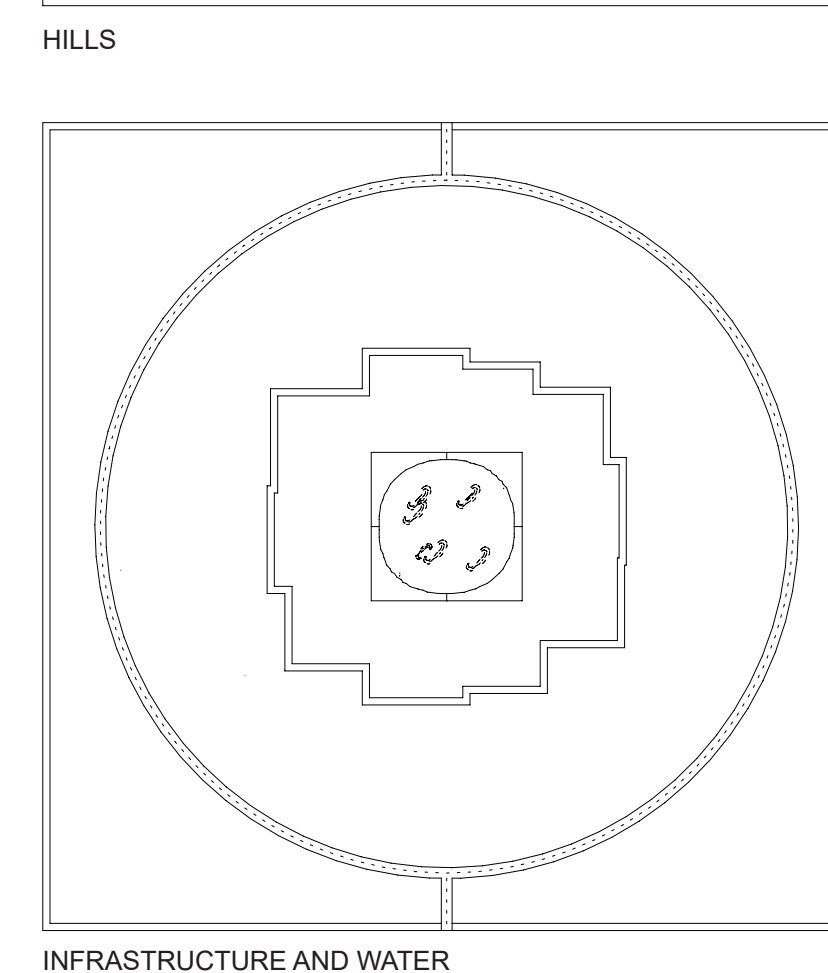
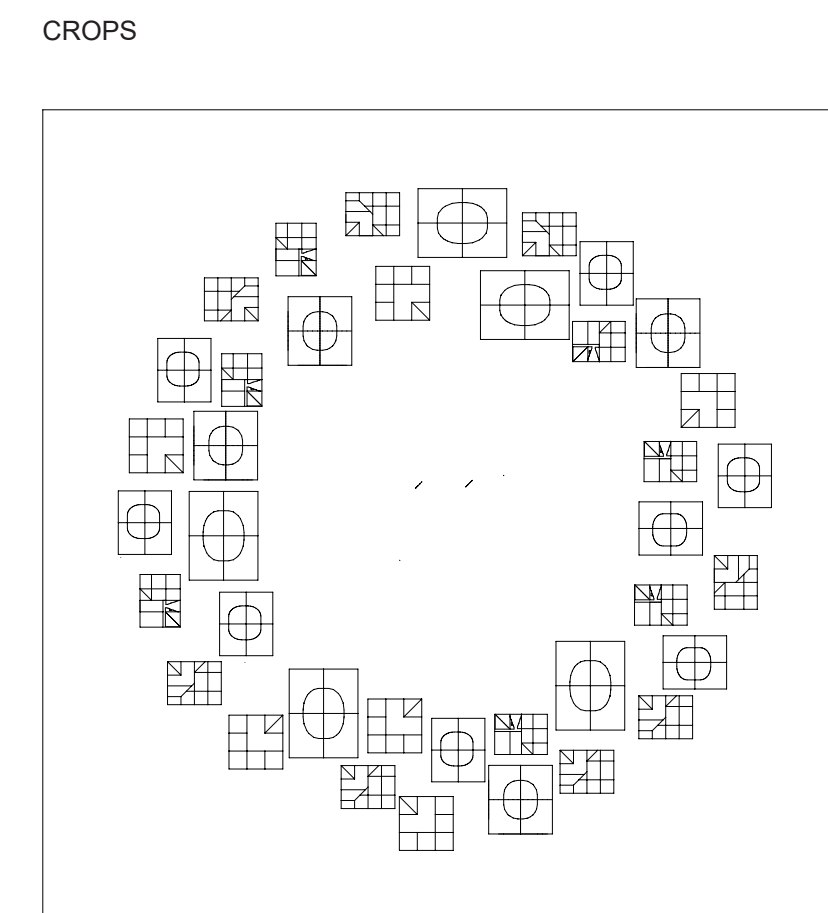
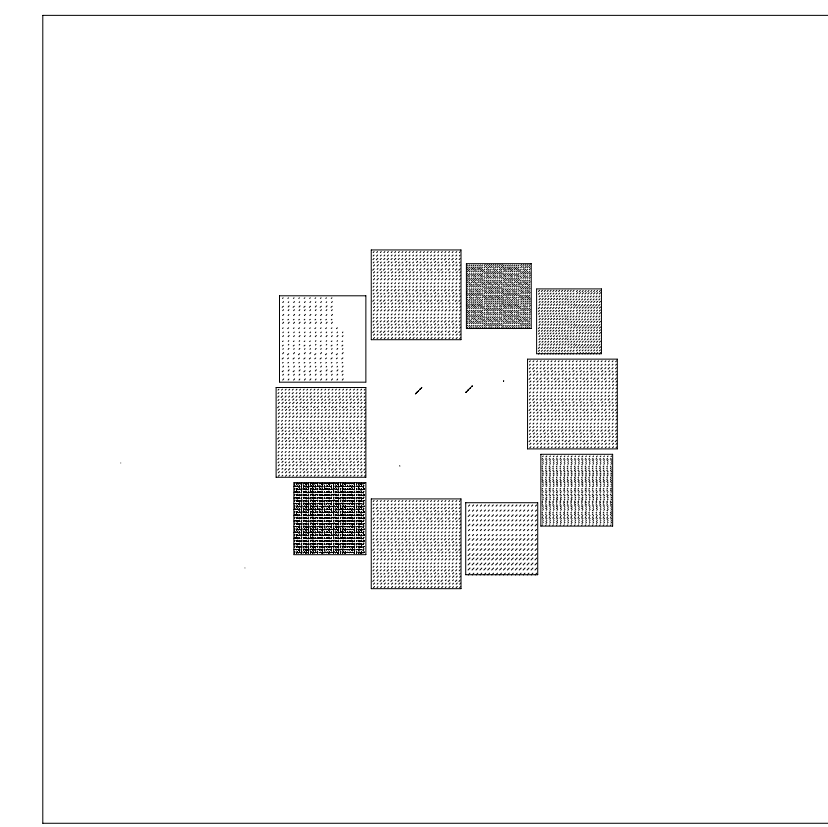
DATA - ANIMALS - CROPS - FARM



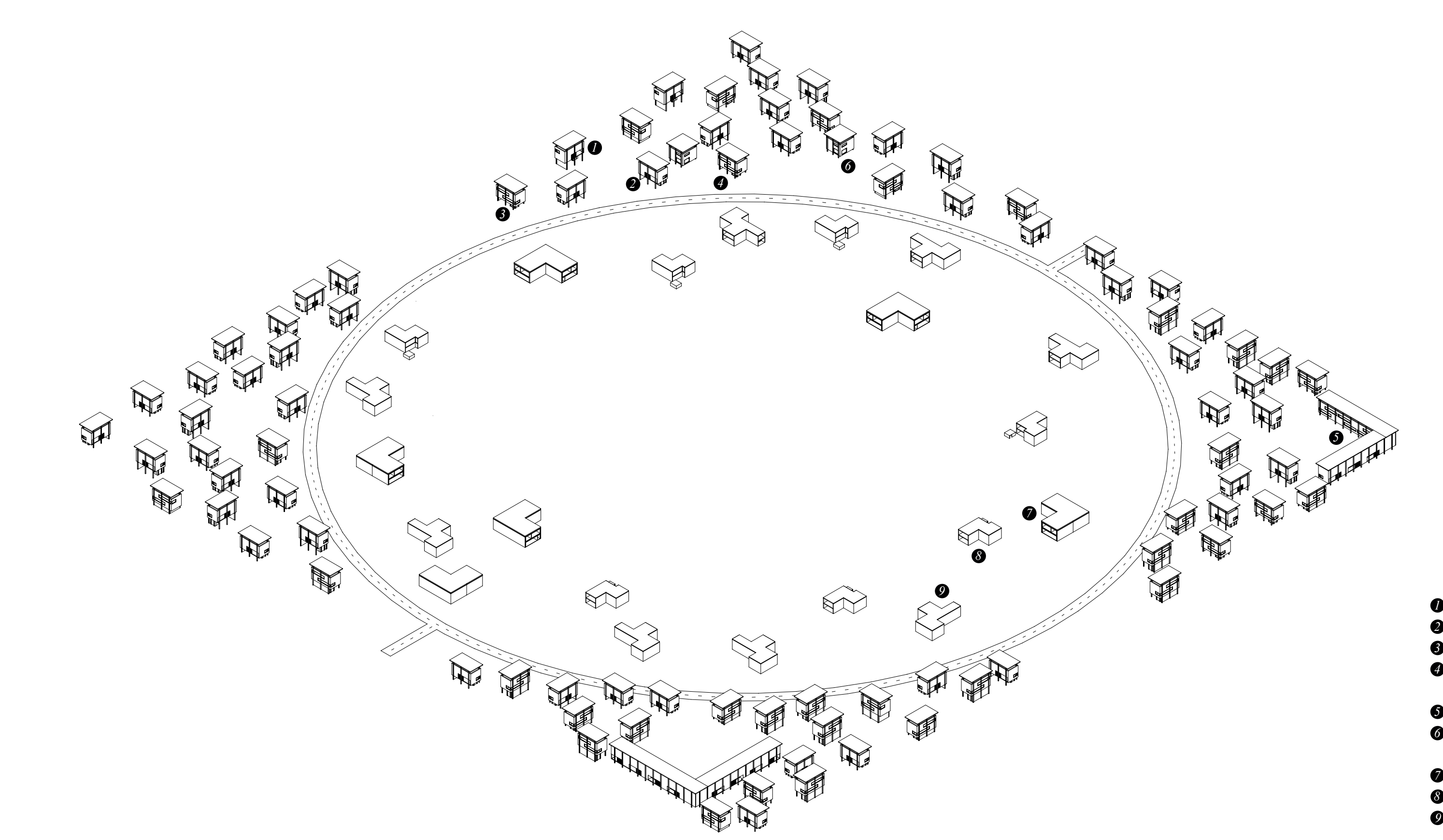
TYPE OF HOUSES



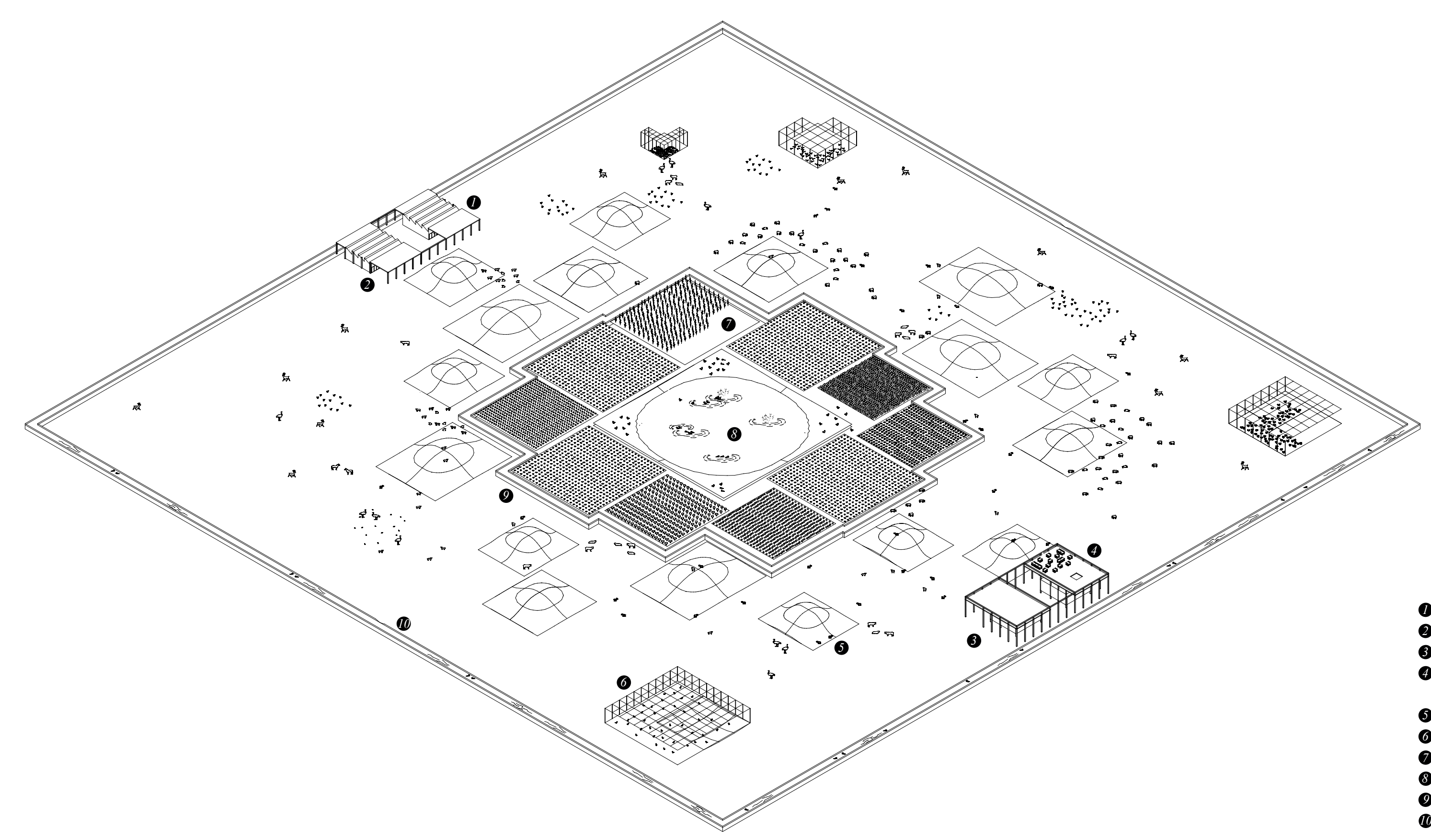
LANDSCAPES AND ECOSYSTEMS



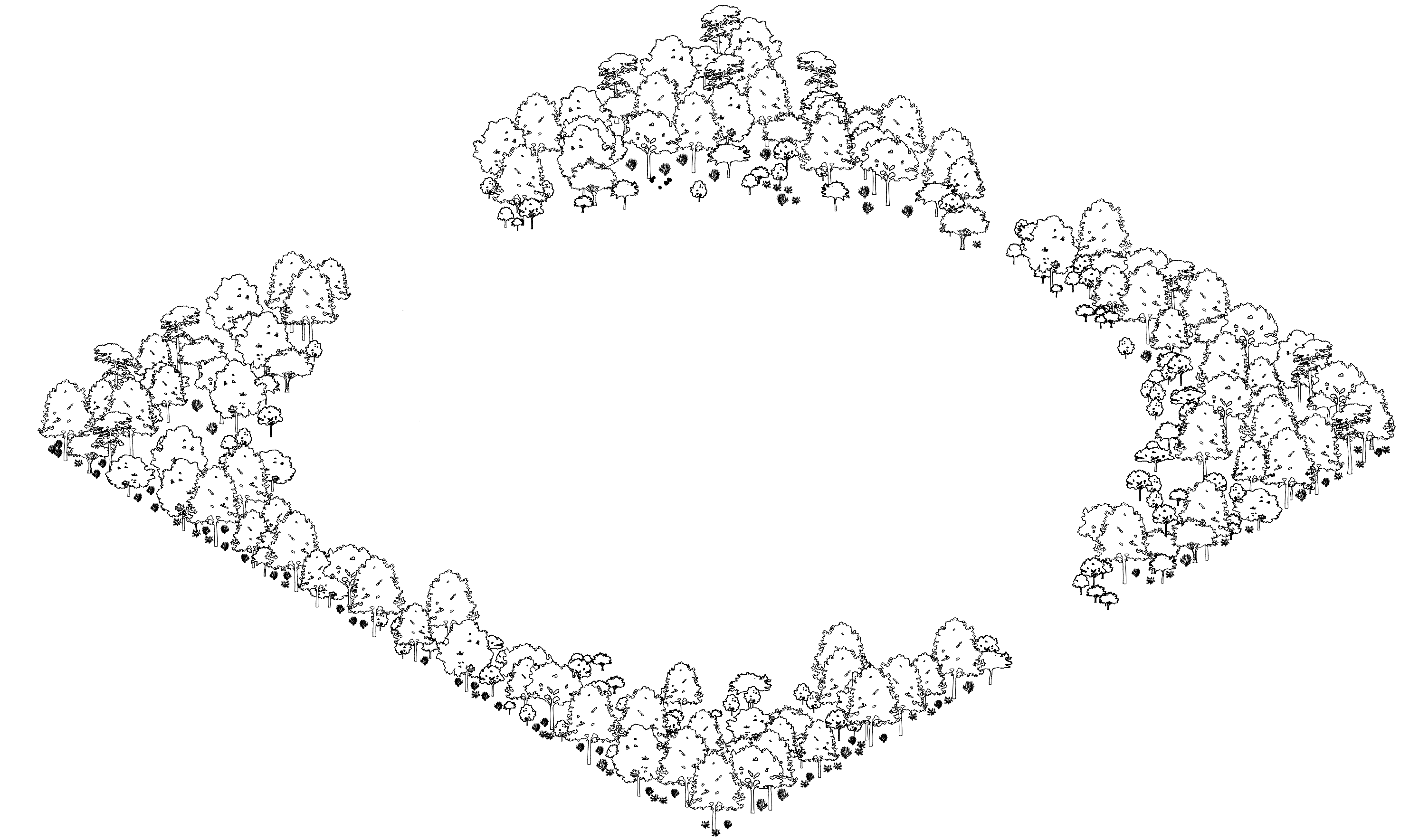
PLOT



ARCHITECTURE



AGRI CULTURE



NATURE

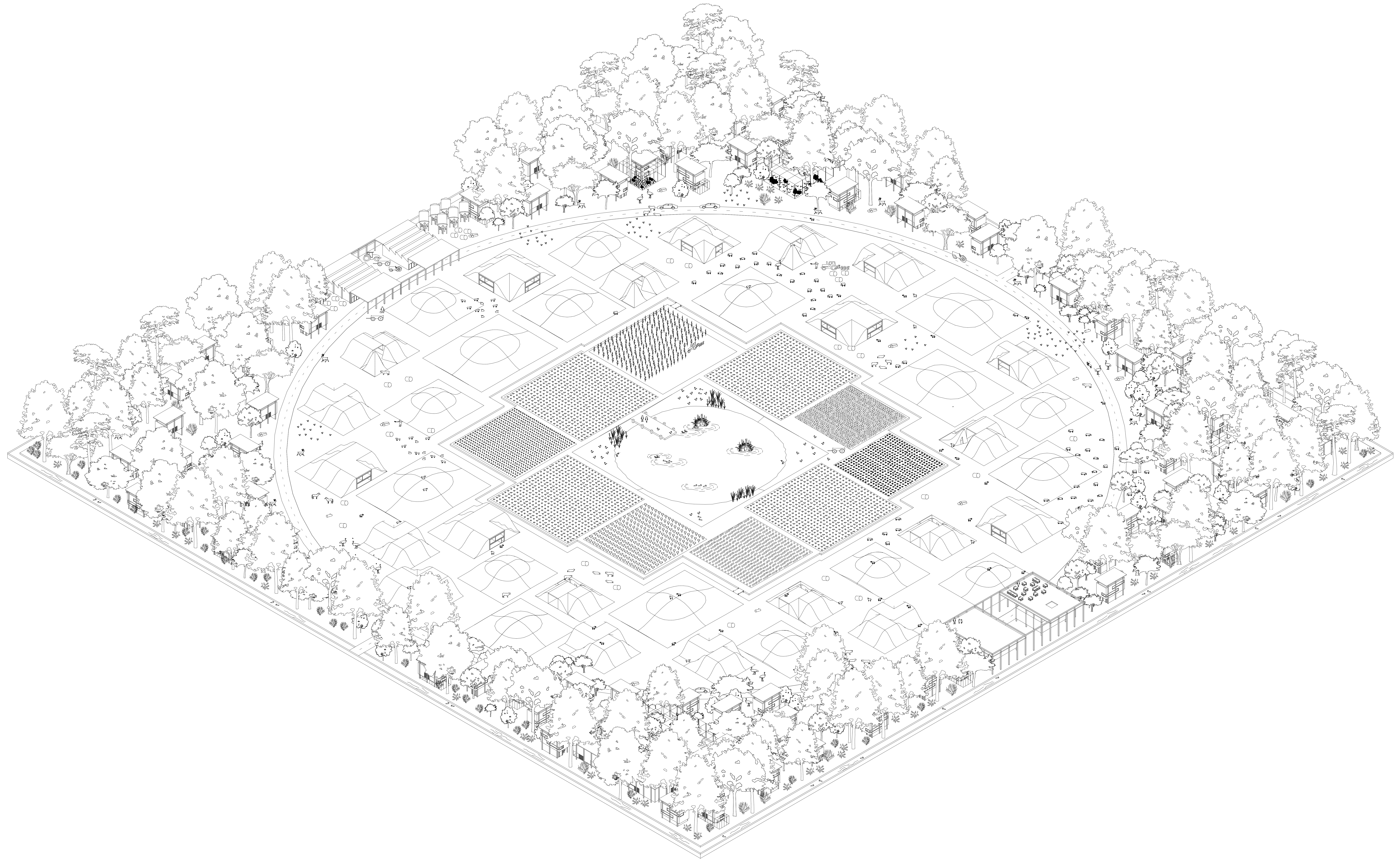
- Still houses 3.5 m
- Still houses 2.5 m
- Still houses 1.5 m
- Still houses with nets 1.5 m
- Houses with nets - row
- Houses with nets - detached
- Hill houses type 1
- Hill houses type 2
- Hill houses type 3
- Infrastructure

- Animal farm
- Butcher
- Shop
- Restaurant
- Hills
- Aviary
- Crops
- Pond
- Ditch 1
- Ditch 2

- Forest - trees - bushes
- Meadow

ANIMAL FARM

LYNN HEEREN



TOTAL PLAN