

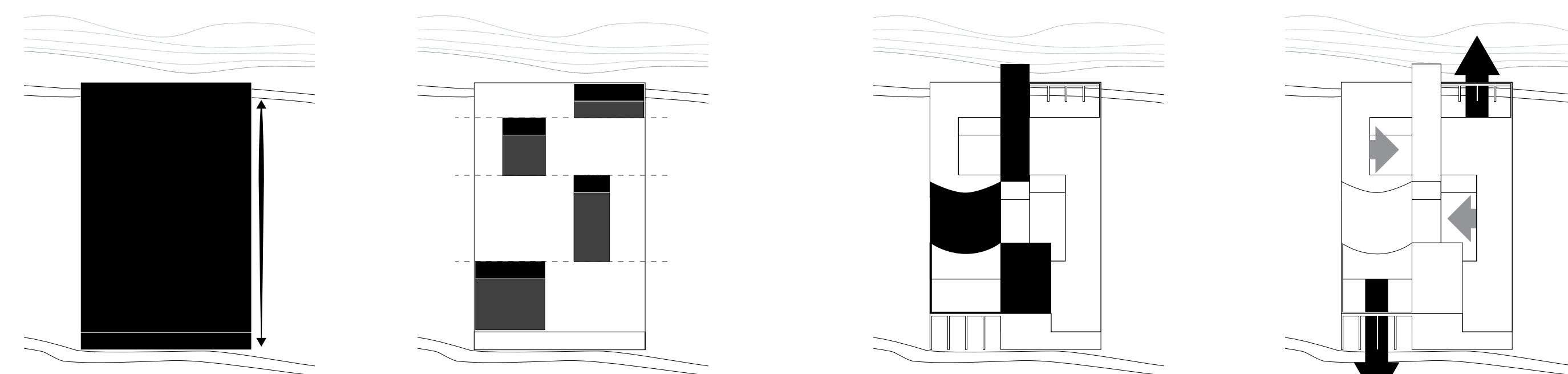
Patio School

School for a Timber Age

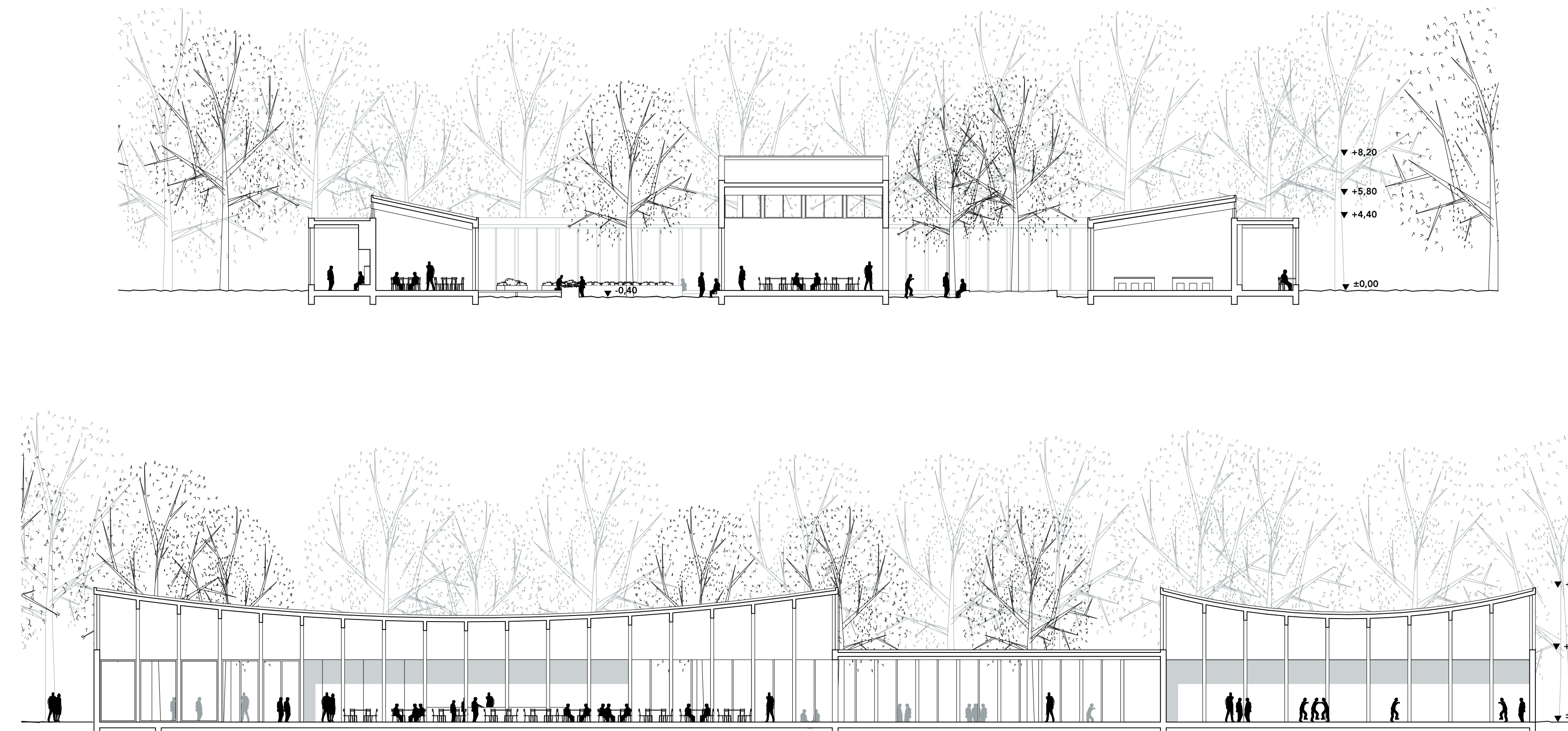
Justus Scharfer Rotterdamse Academie van Bouwkunst 2021
 Benjamin Fibrey Luca Moscelli Joost Emmertik Conxa Gené

The island of Buitenrood, a small nature enclave in the east of Rotterdam, represents a characteristic part of dutch history: the constant interplay between man and nature, resulting in the binary landscape we know today. During the last century, the island was cherished as a place for retreat (since the 'volkstuin' was initiated in the 1940s). With its recent development, multiple tidal parks were established, turning the island into a place of learning and discovery. The new elementary school connects these elements and creates a calm, exclusive learning environment for kids and young teenagers. It exposes the children to nature and encourages them to appreciate it on a daily basis.

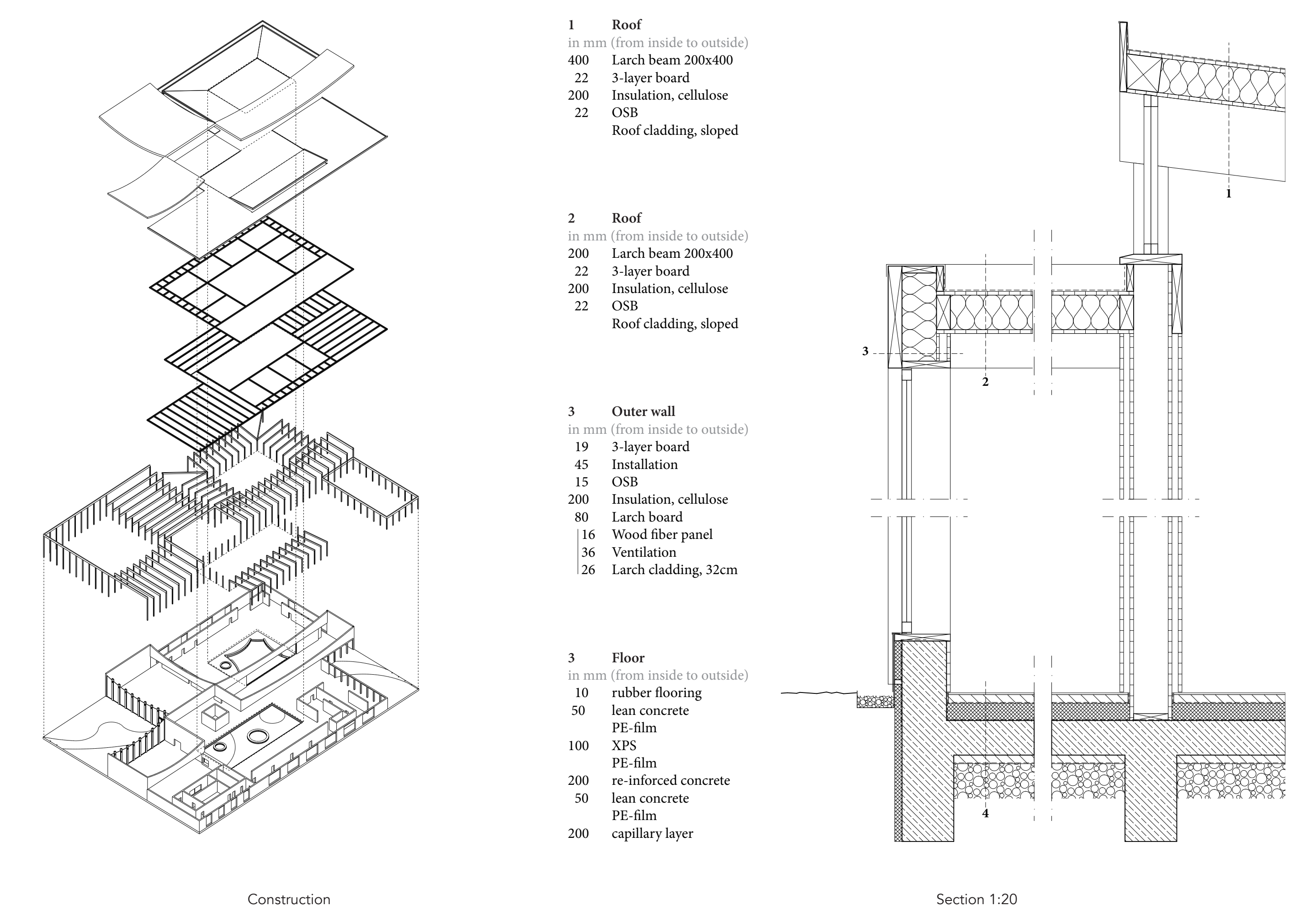
The building, situated on the site of the current 'Juietplant', functions as a connecting element, stretching in between the northern and southern river banks. The programme is laid out on the ground floor and pushes the pupils and visitors up against the surrounding forest, creating a working environment that is constantly confronting the children with the unique characteristics of the site and the calming, stimulating effect of nature. Whilst the double-height, extrovert shared spaces are oriented towards the public, the classrooms agglomerate around private patios, allowing visual connections between classes and strengthening the sense of community. Furthermore, those serve as outdoor play areas and learning gardens, whilst bringing more light into the adjoining community functions. Hallways, that loop around the patios and classrooms, invite the children to discover, interact and linger, crossing paths with other age groups in the central lunch hall.



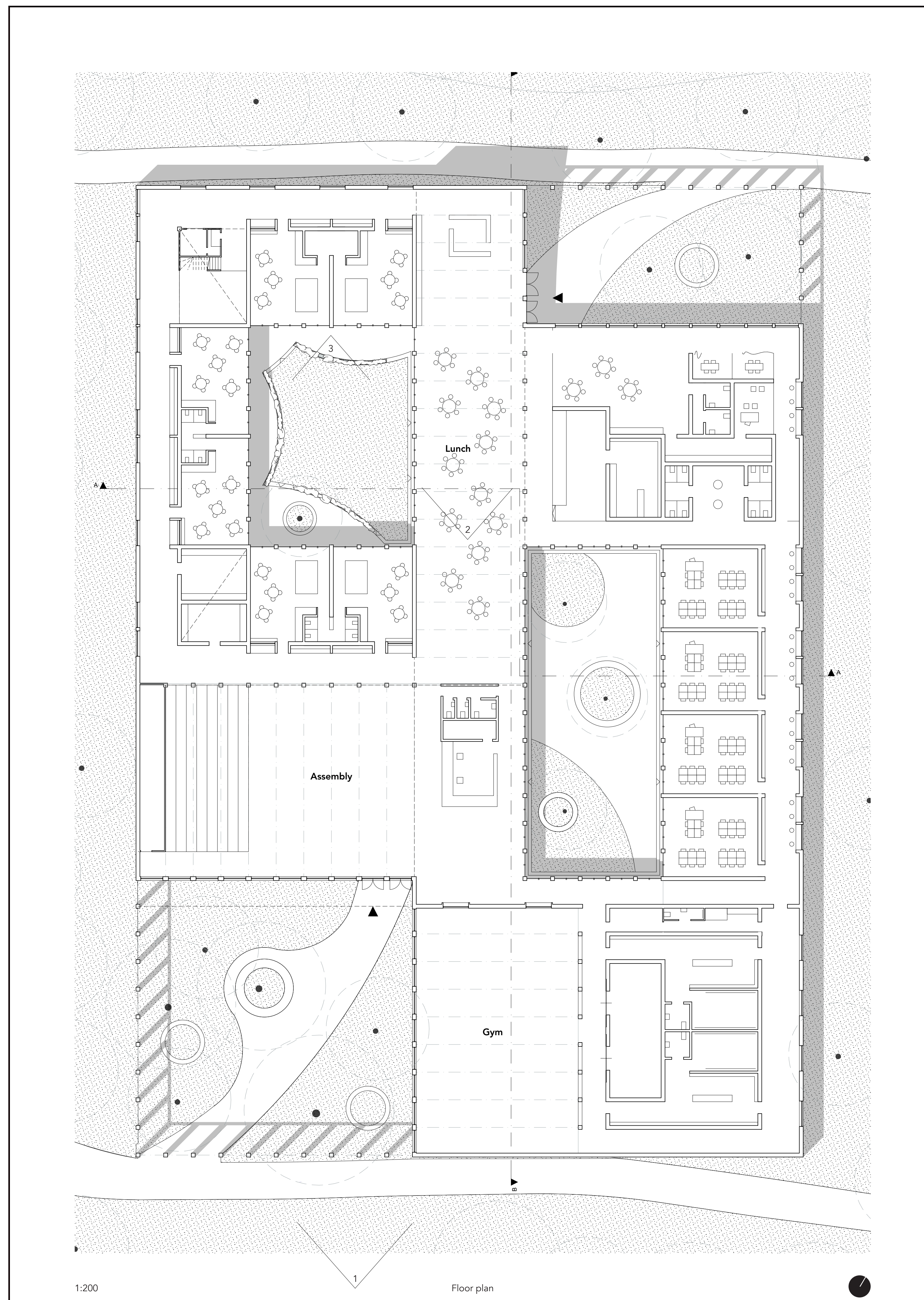
Stretch between existing infrastructure Subtract Patios Extrude shared spaces Introvert vs extrovert



1:200 Section A-A (Upper) Section B-B (Lower)



1:500 Site plan



1:200 Floor plan



3 Perspectives