

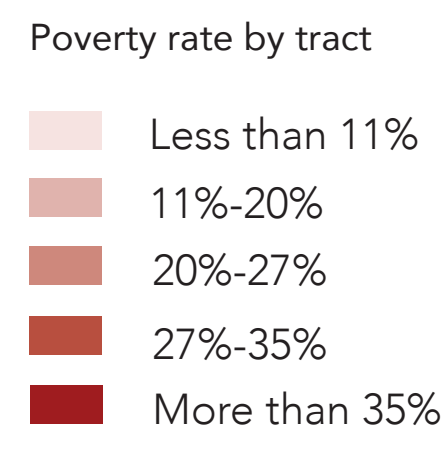
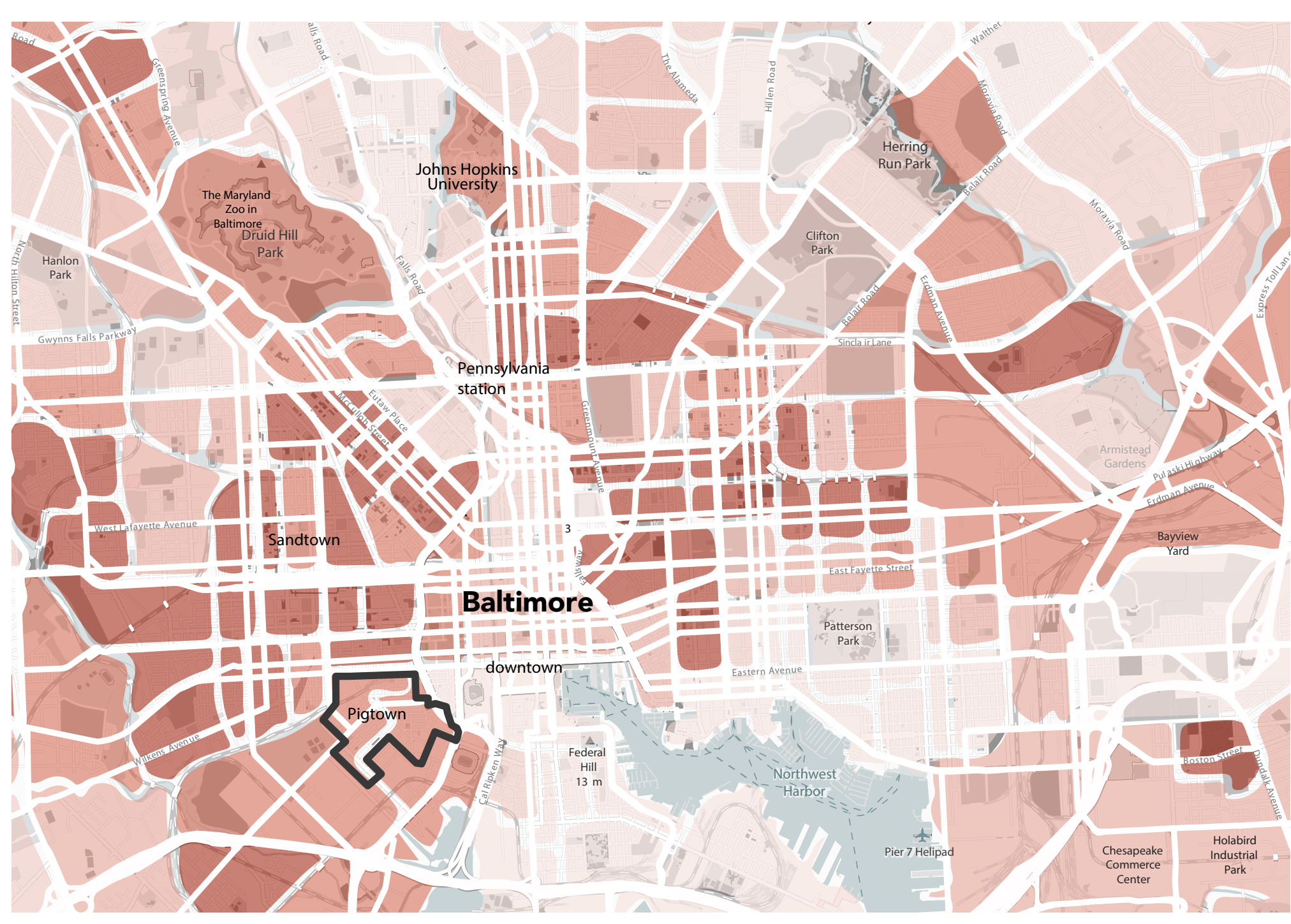
The Mom's Collective

Corner Community: Strengthened by the idea of not being alone, a springboard to self-reliance

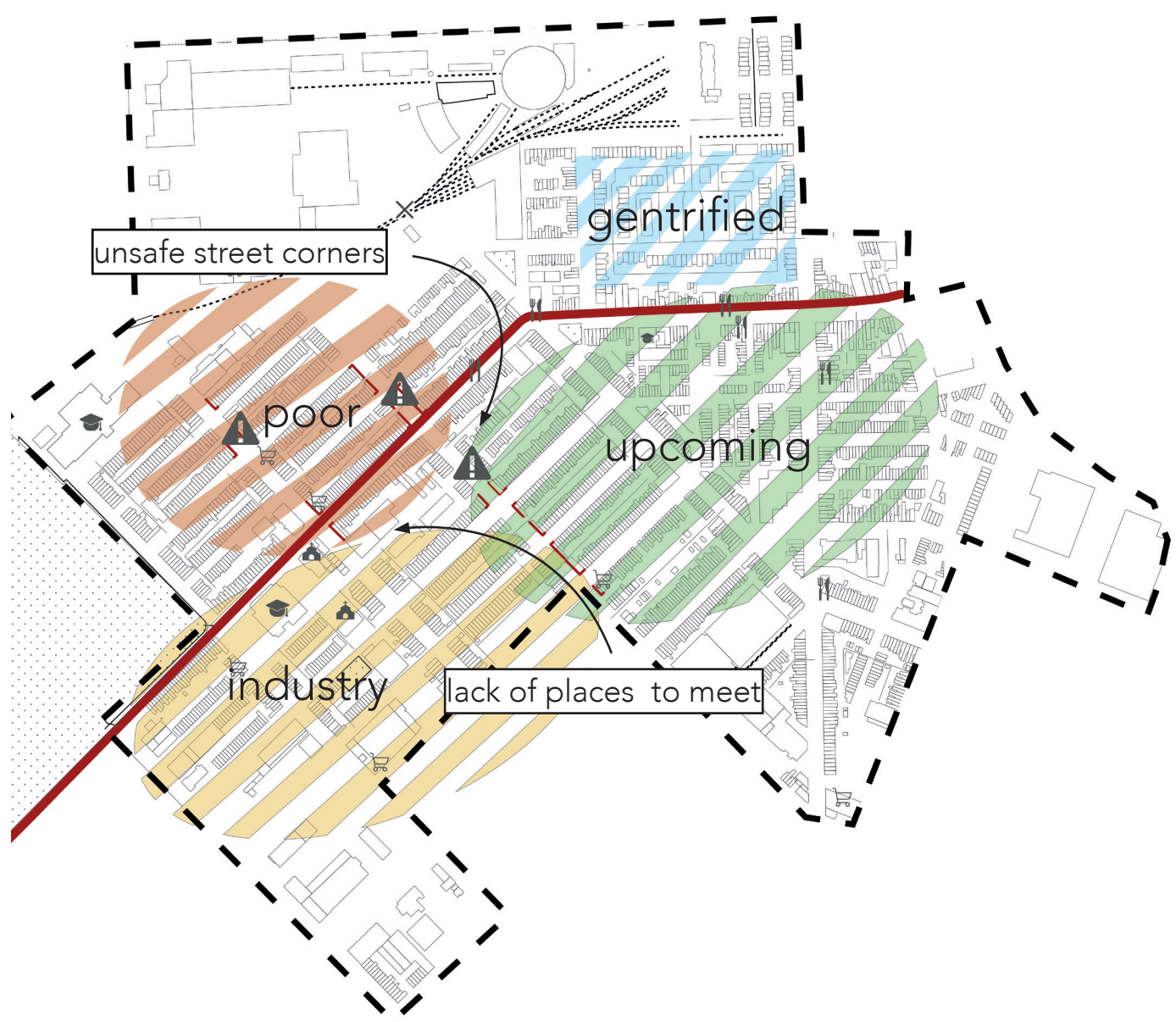
The mom's collective corner community can be implemented through the whole neighborhood. It's a small-scale collective housing for single mom's.

The design links existing corner row houses, with space for private enterprises in the plinth. It's serve as a public meeting place for the neighborhood: a small restaurant combined with different public programs depending on the location, like living room, dining room and day-care. The single mothers not only receive housing, but also help and advice on personal growth

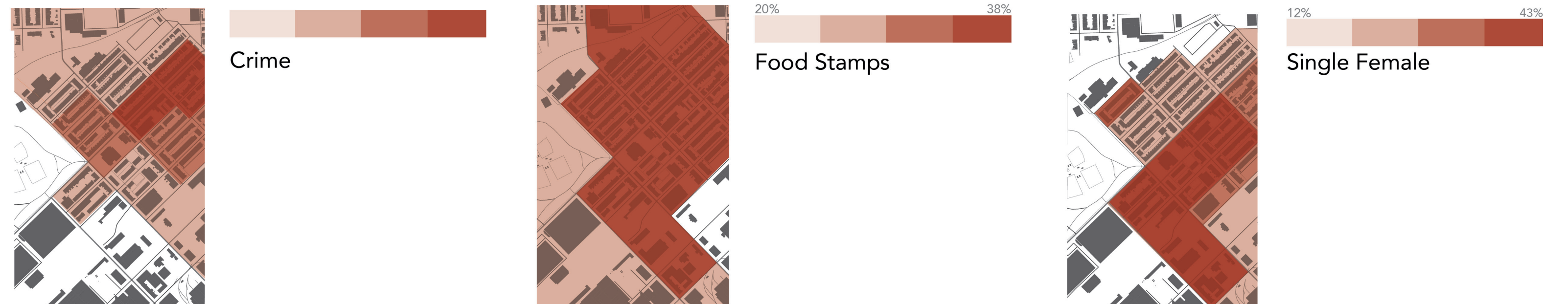
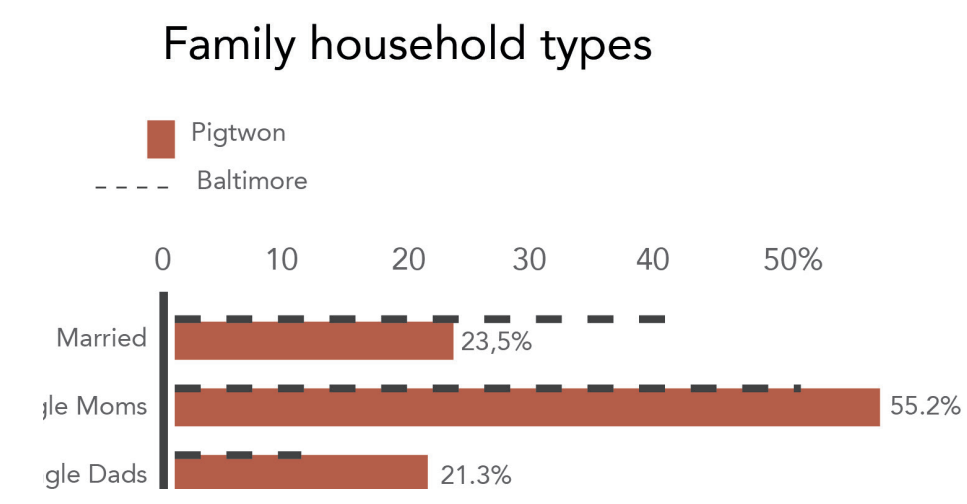
The private and public areas are connected by a semi-open core with stairs, containing functions where the moms can meet: the kitchen is centrally located on the ground floor, the laundry room is on the first floor, and, on the top, there is a roof garden: I safe place for single mom's and there kids.



Poverty in Baltimore, USA

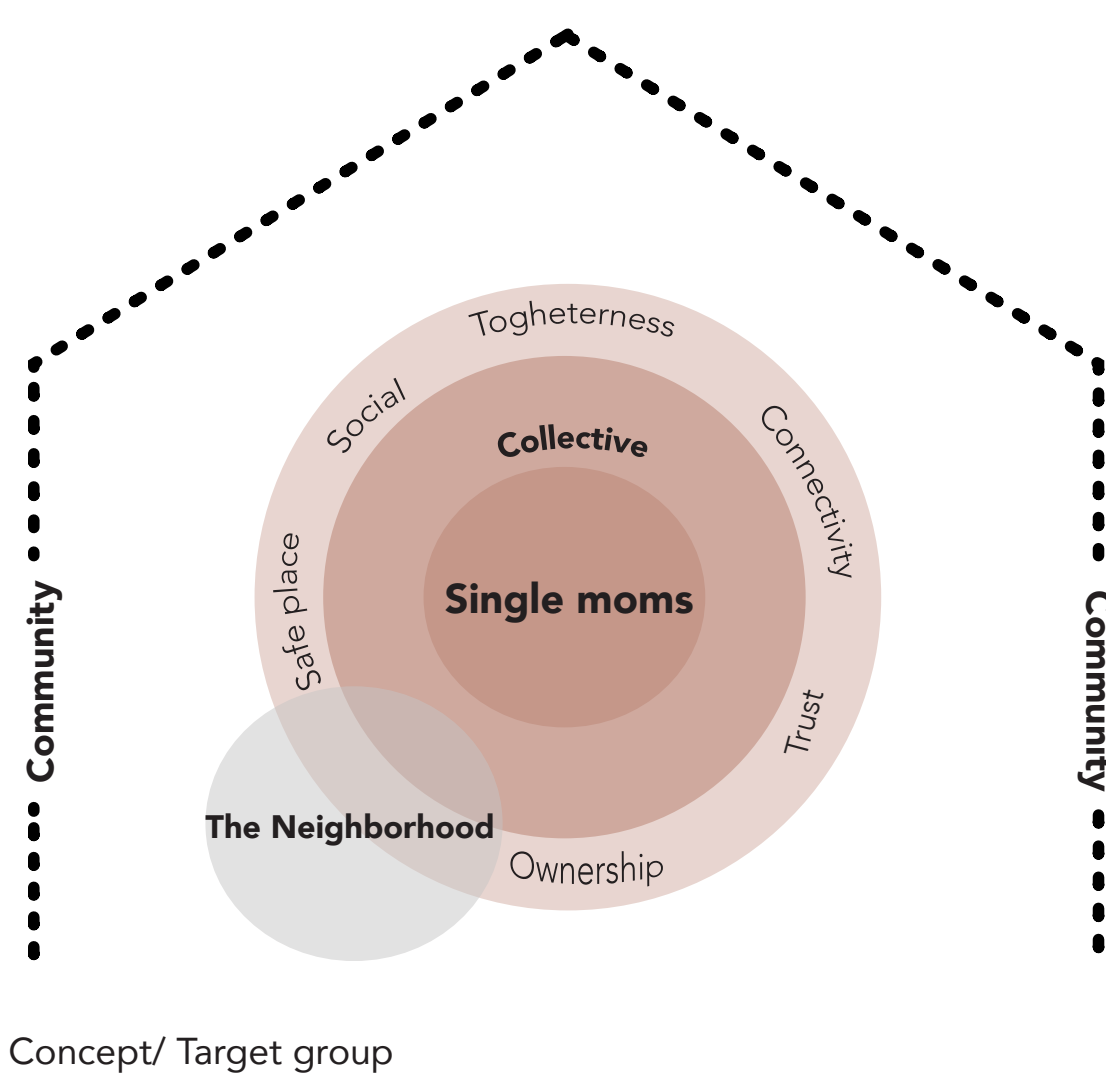


Urban/social analysis of Pigtown, Baltimore



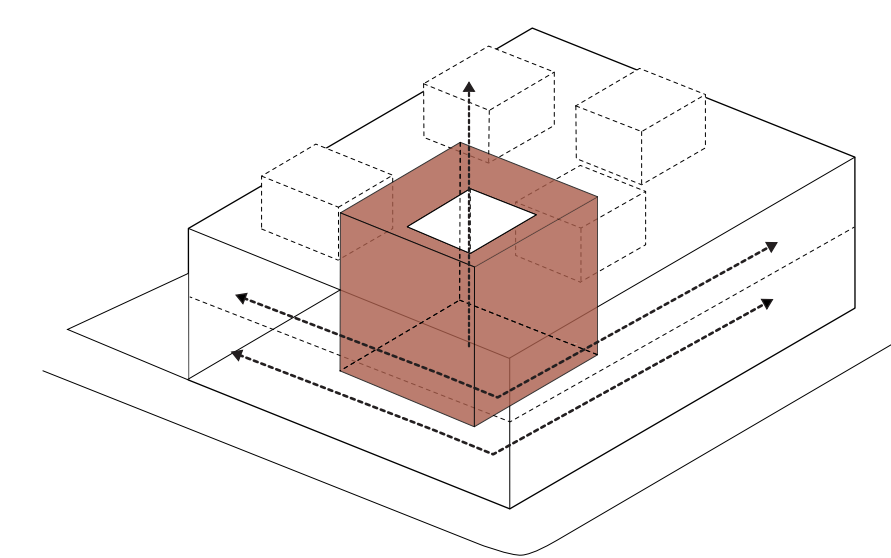
Demographic data, Pigtown

"Many moms who come here for help, are single, do not have the means to take care of their children... Also, young moms come here and many of them are addicts", - Cardell Howard.

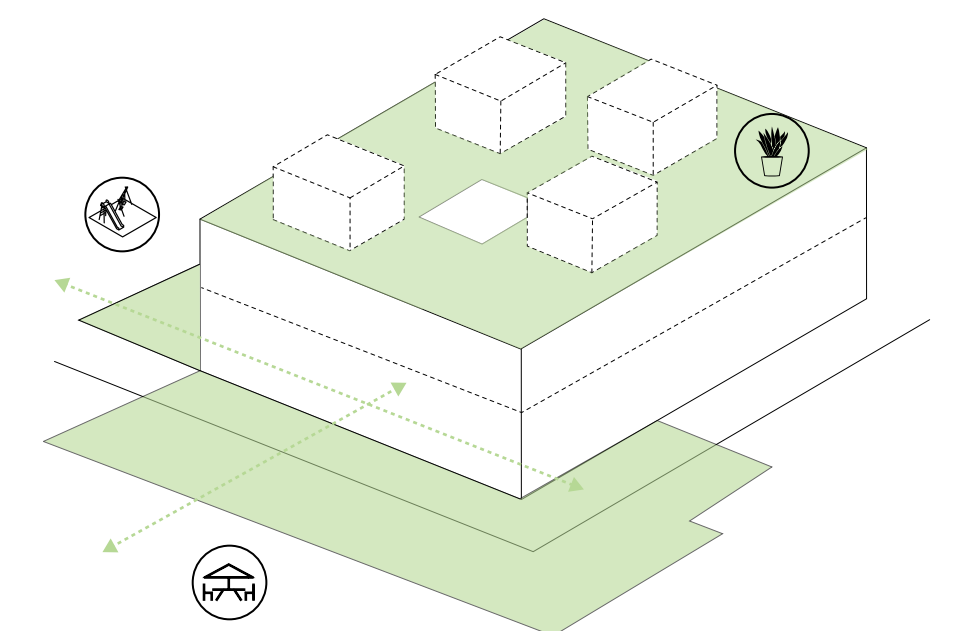


Concept/ Target group

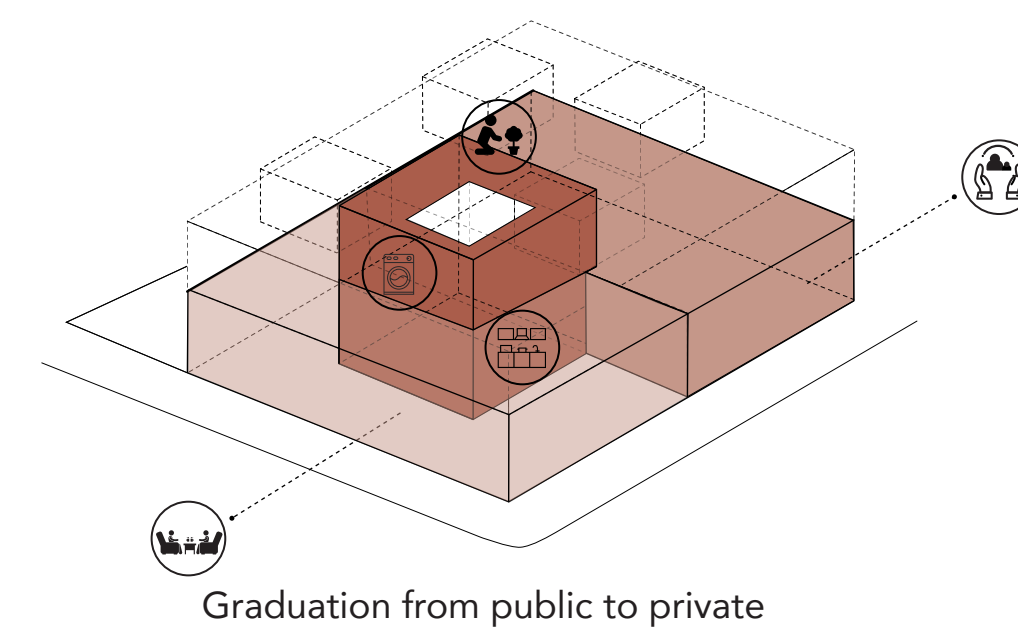
Spatially Concept



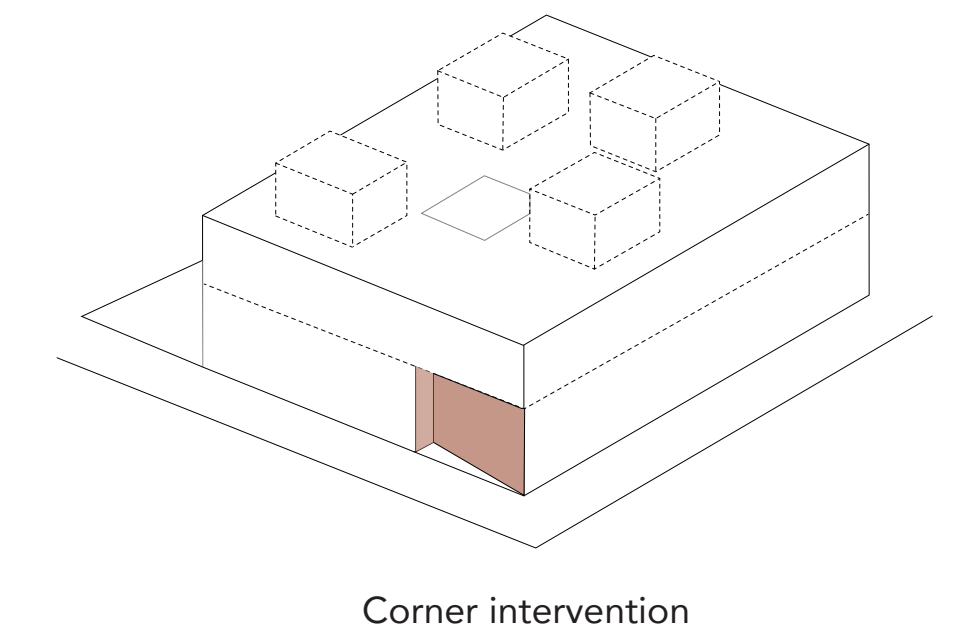
Core/Vertical connection



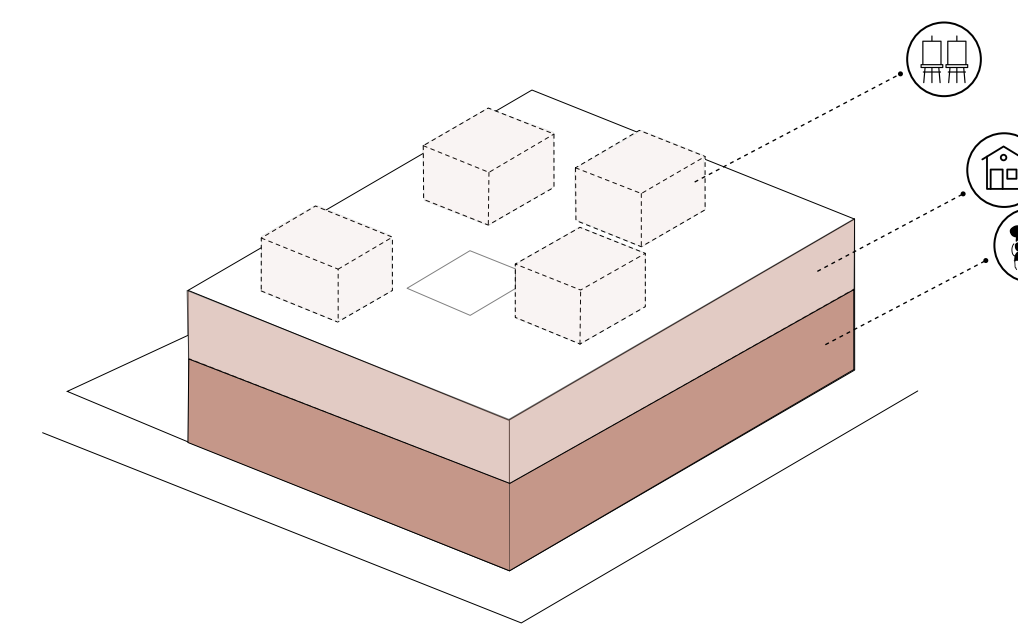
Introducing green



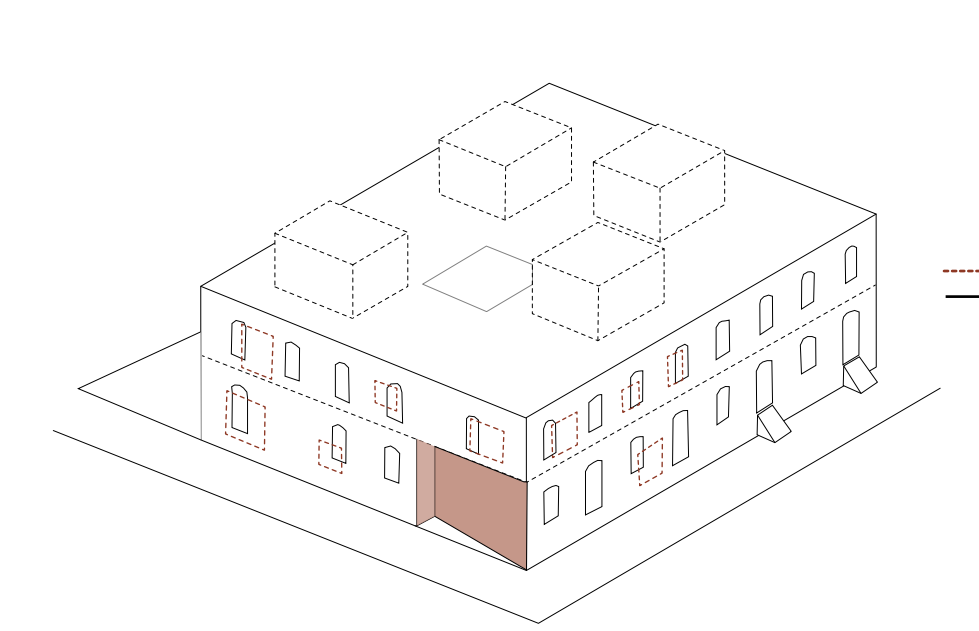
Graduation from public to private



Corner intervention

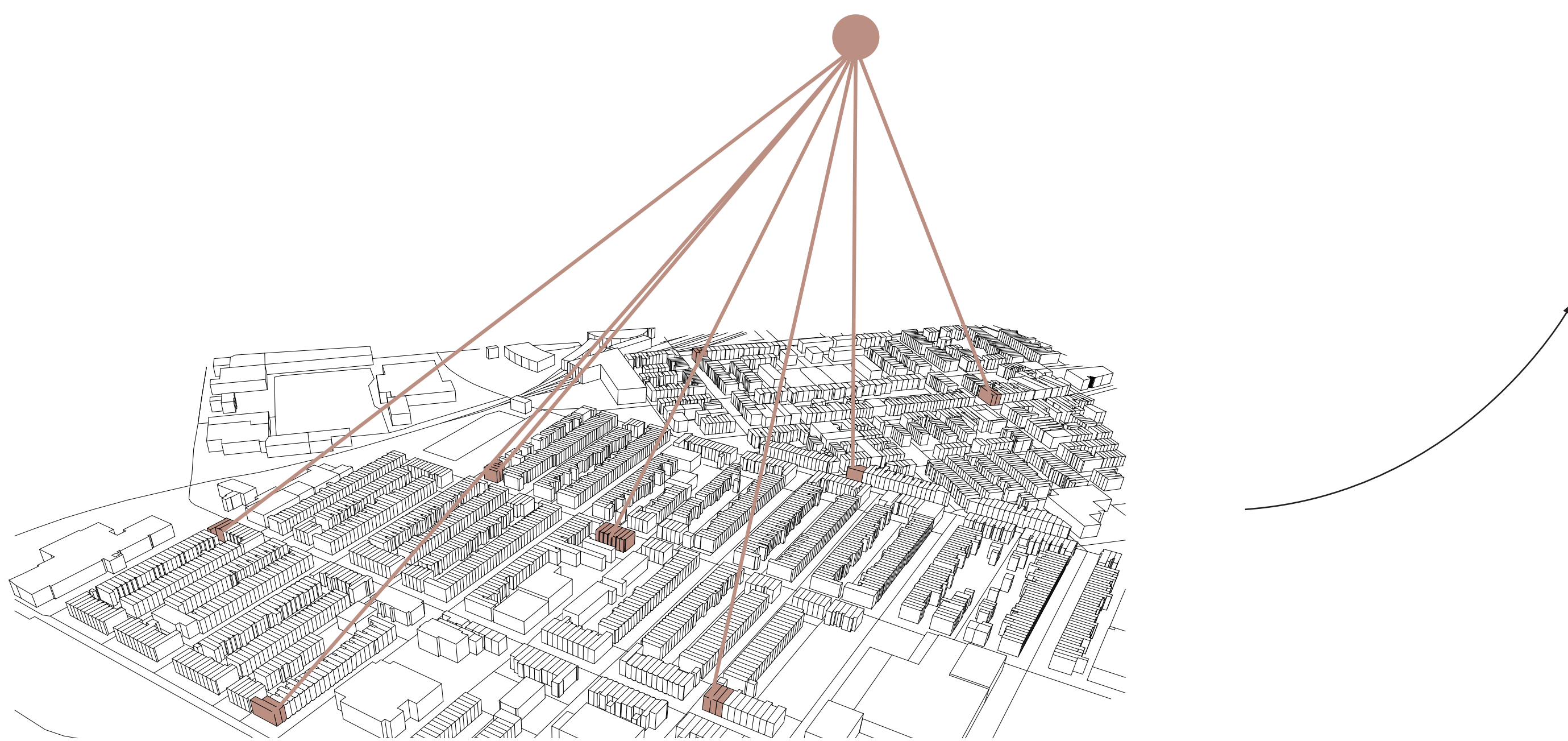


Program



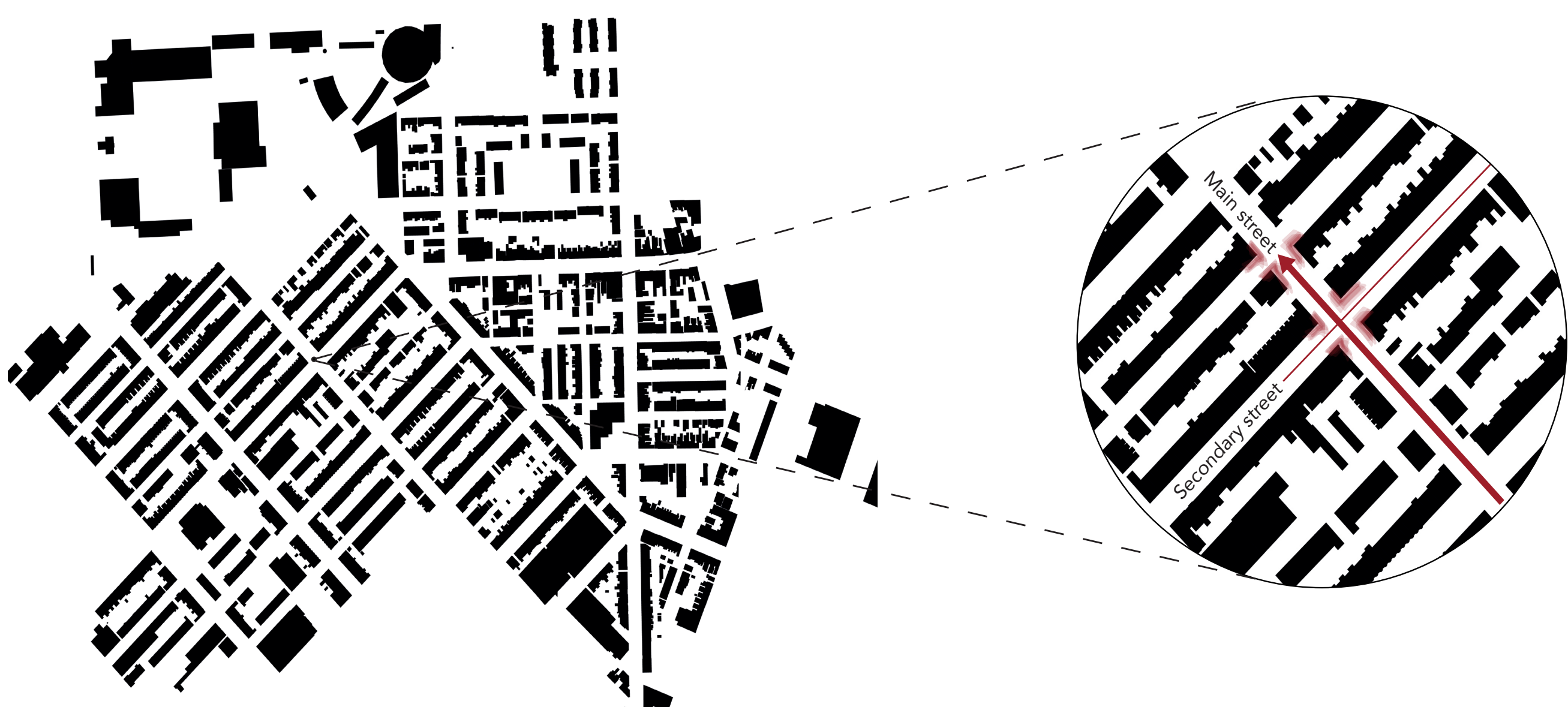
facade

The Mom's Collective Corner Community



Concept implementation

"The corner functions as a landmark, because there the city dweller experiences a change in emphasis,... where he adapts like an acceleration to a change of scale"- Richard Sennett



Urban Fabric Pigtown

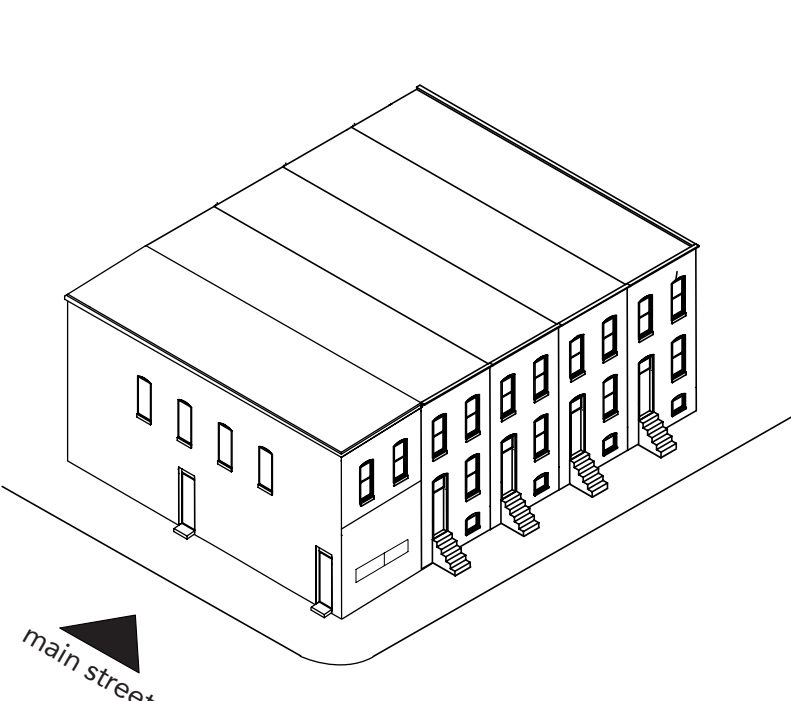
Corner intervention



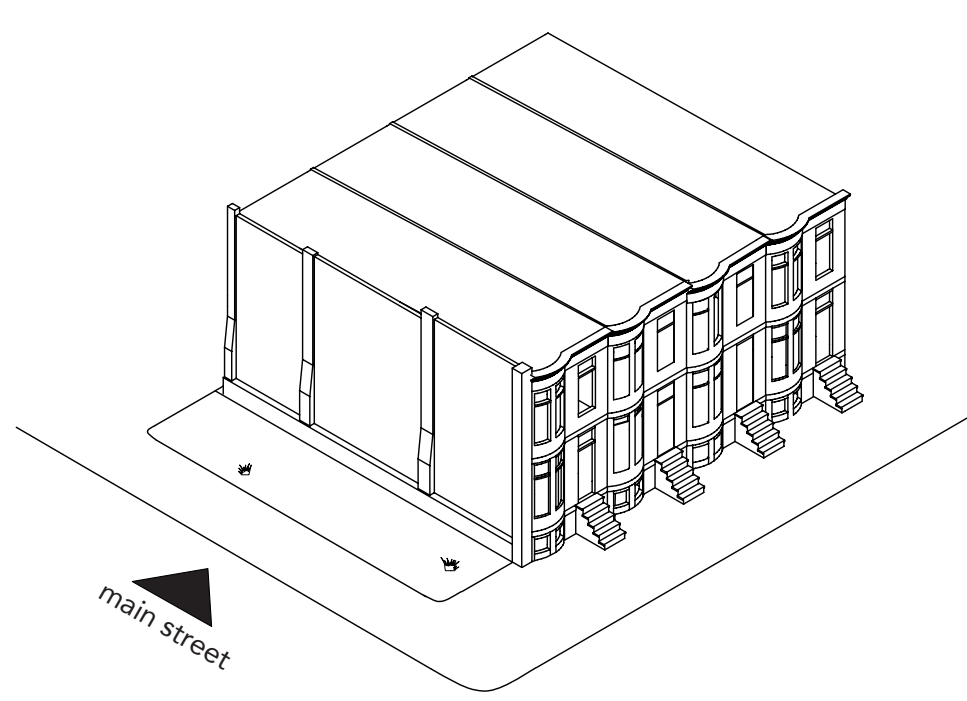
Current corners



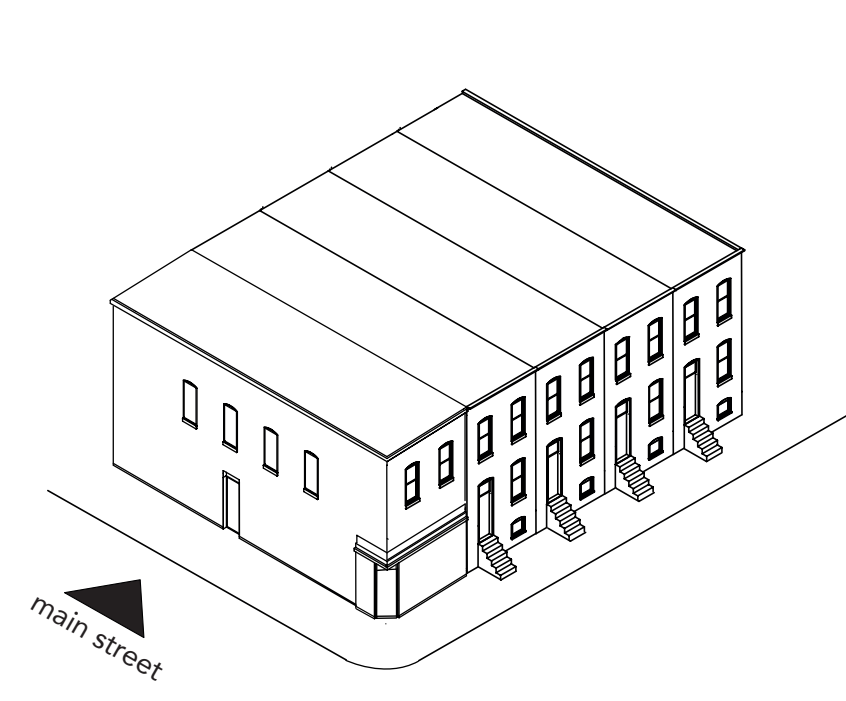
Existing corner typologies



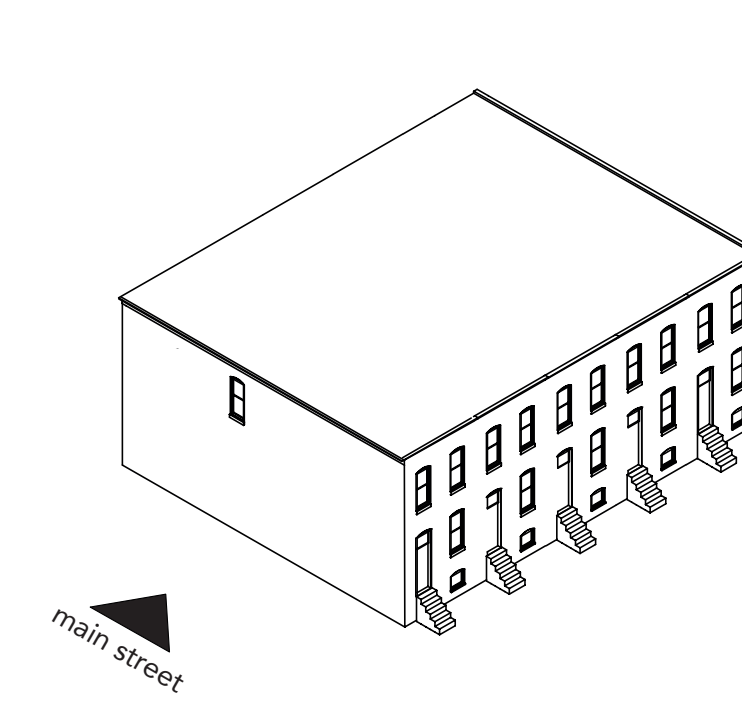
entrance reversed



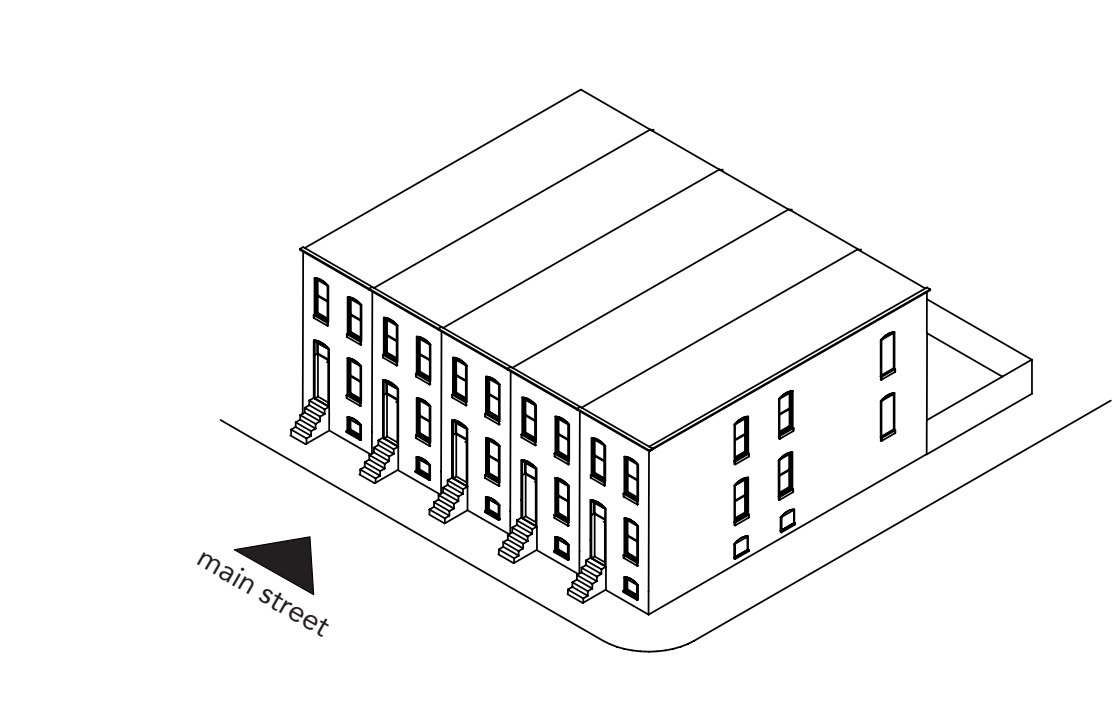
vacant plot



corner schop



blind facade



row house

Tackling Inequality

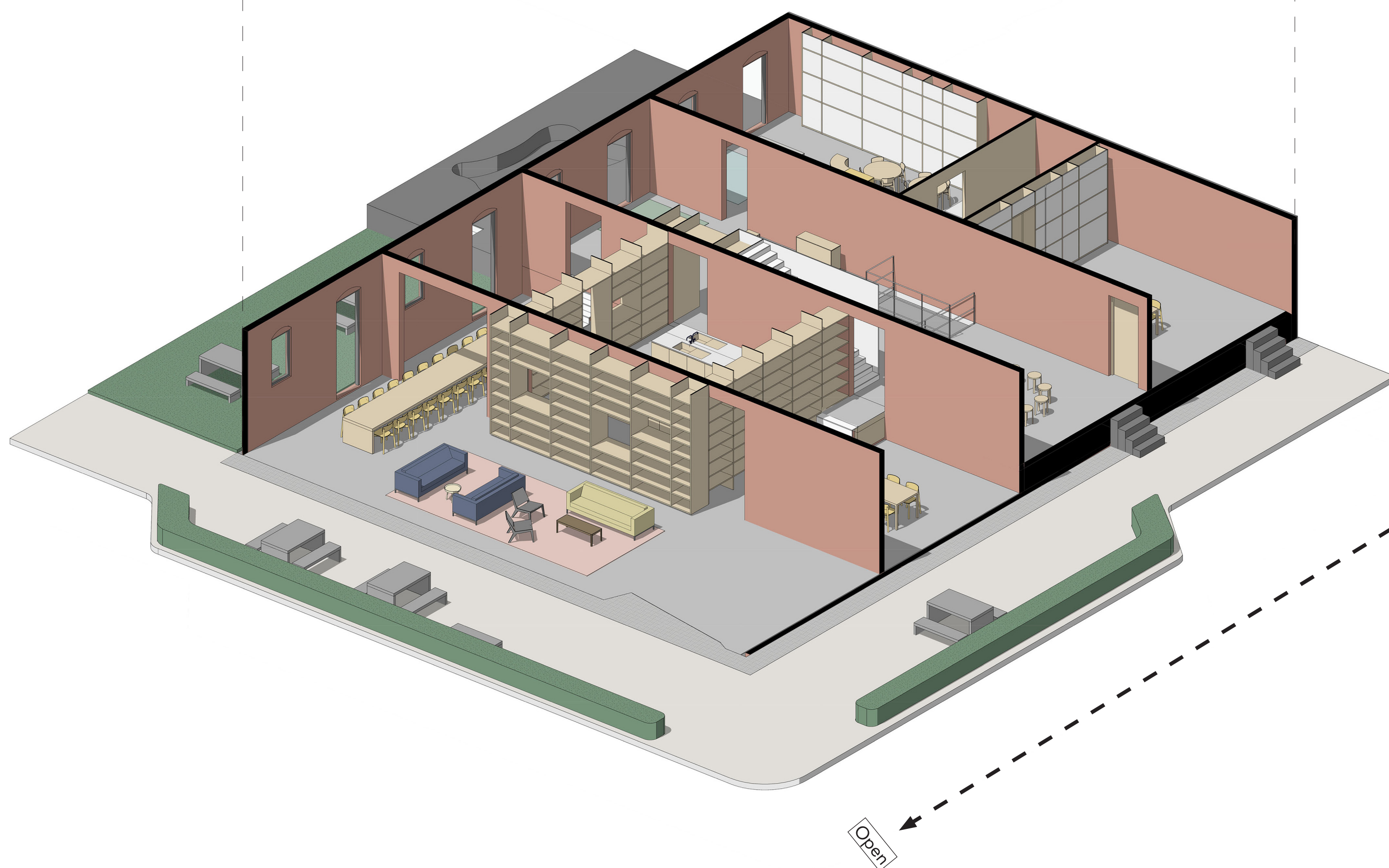
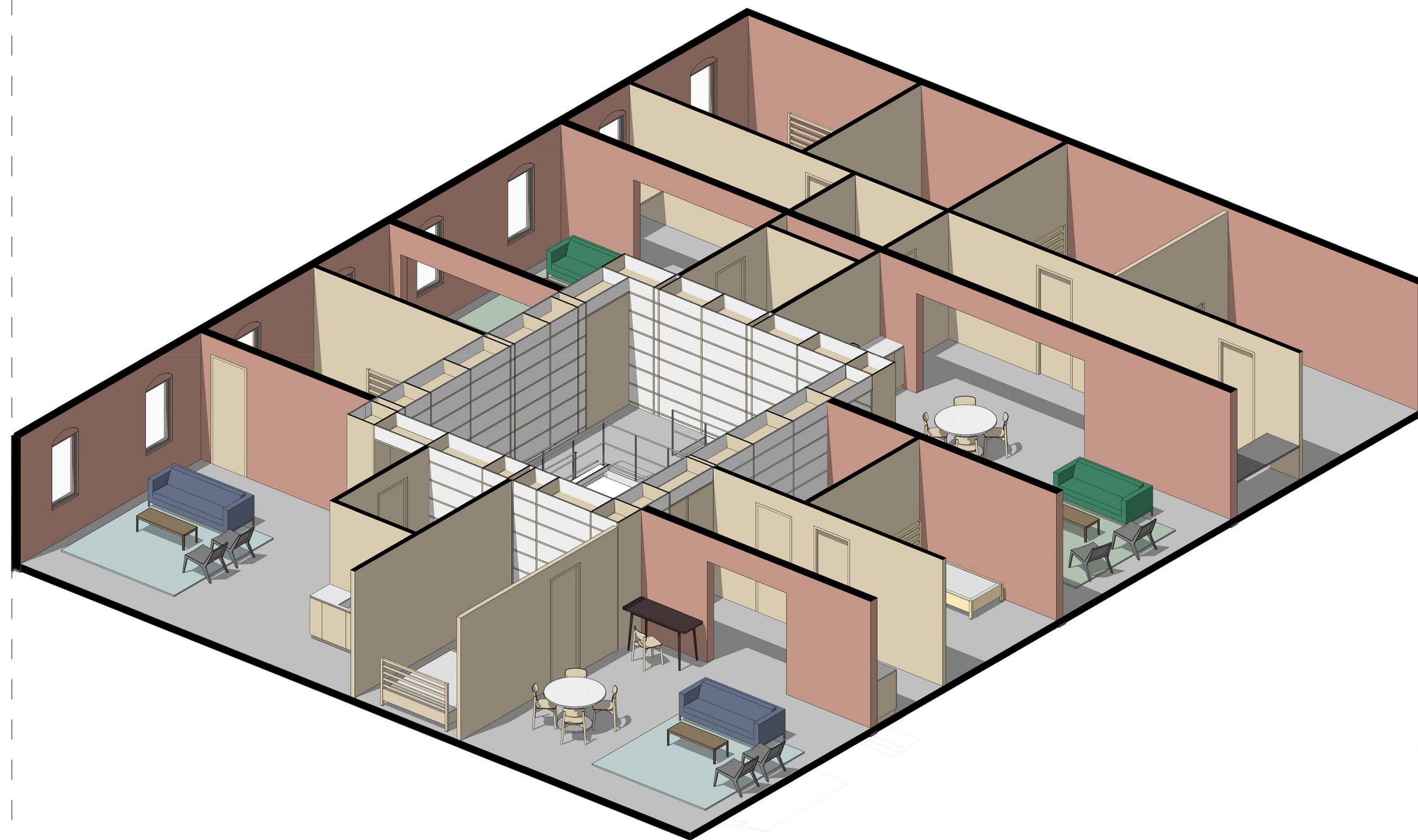


Front facade



Left facade

"It is fair to say that mothers play an important role in these neighbourhoods as they can give the next generation a better future!"



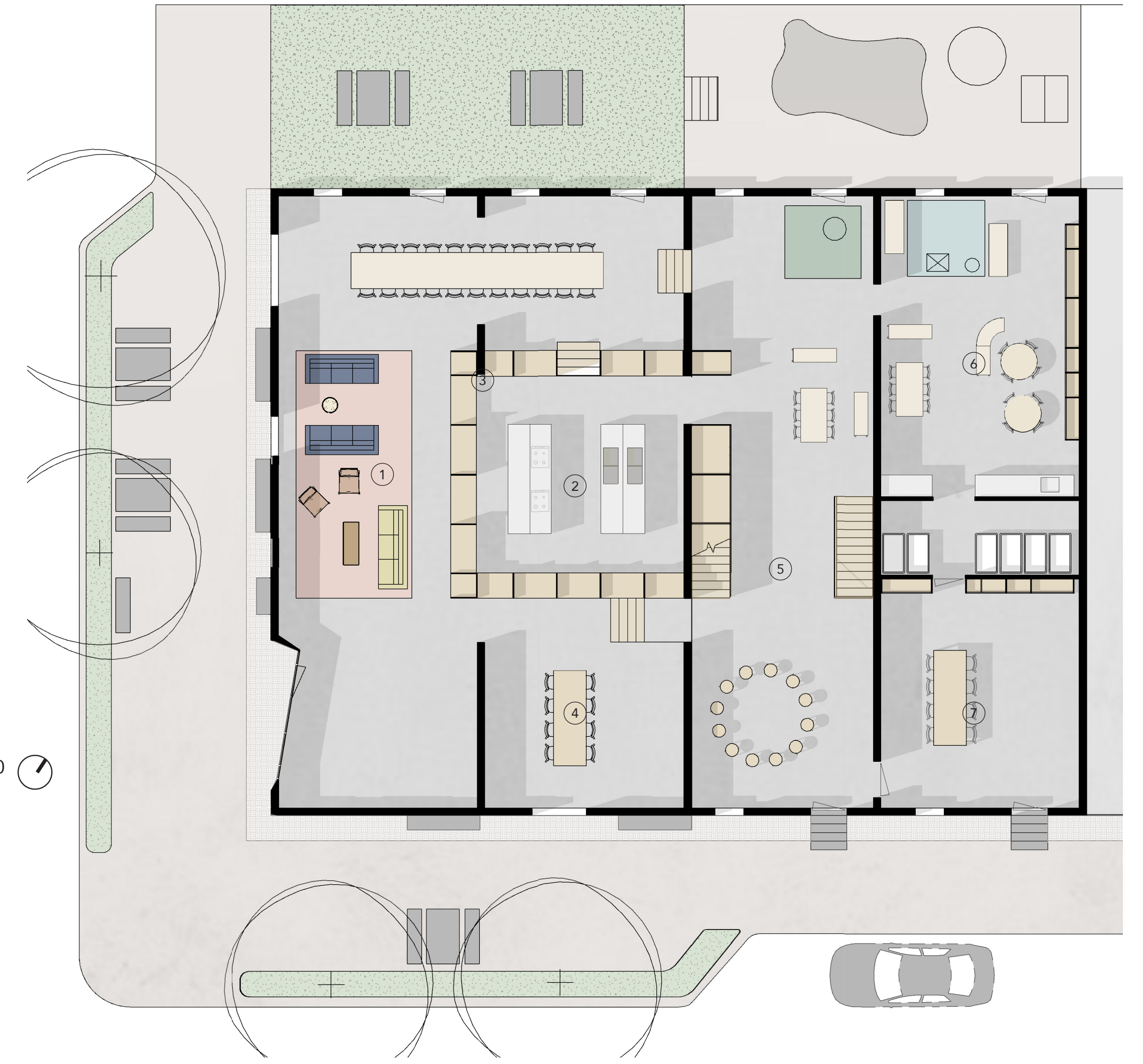
Relationship between domains within building

Private domain

Public domain

Secretive

Open



- Ground floor 1:100
- ① Living room
 - ② Kitchen room
 - ③ Dining room
 - ④ Study room
 - ⑤ Activity room
 - ⑥ Kids room
 - ⑦ Music room



- First floor 1:100
- ① Private room 1
 - ② Private room 2
 - ③ Private room 3
 - ④ Private room 4
 - ⑤ Core/laundry room



- Second floor 1:100
- ① Hobby room
 - ② Hobby room
 - ③ Hobby room
 - ④ Hobby room
 - ⑤ Roof terrace



Long section, Relationship between public and private



Ground floor Dining room / core



First floor core in the private domain