

# Reground

Marconia is an empty plot at the division between harbor area and the neighborhood Oud Mathenesse, here I create a learning center for sustainable building techniques.

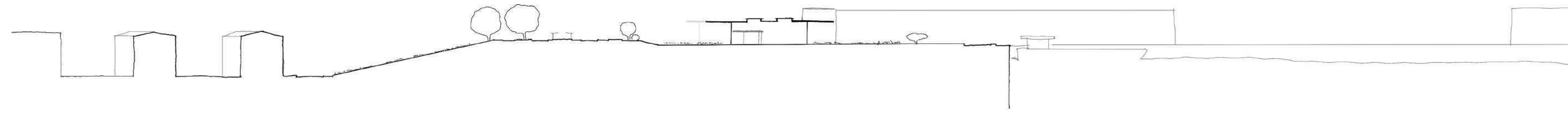
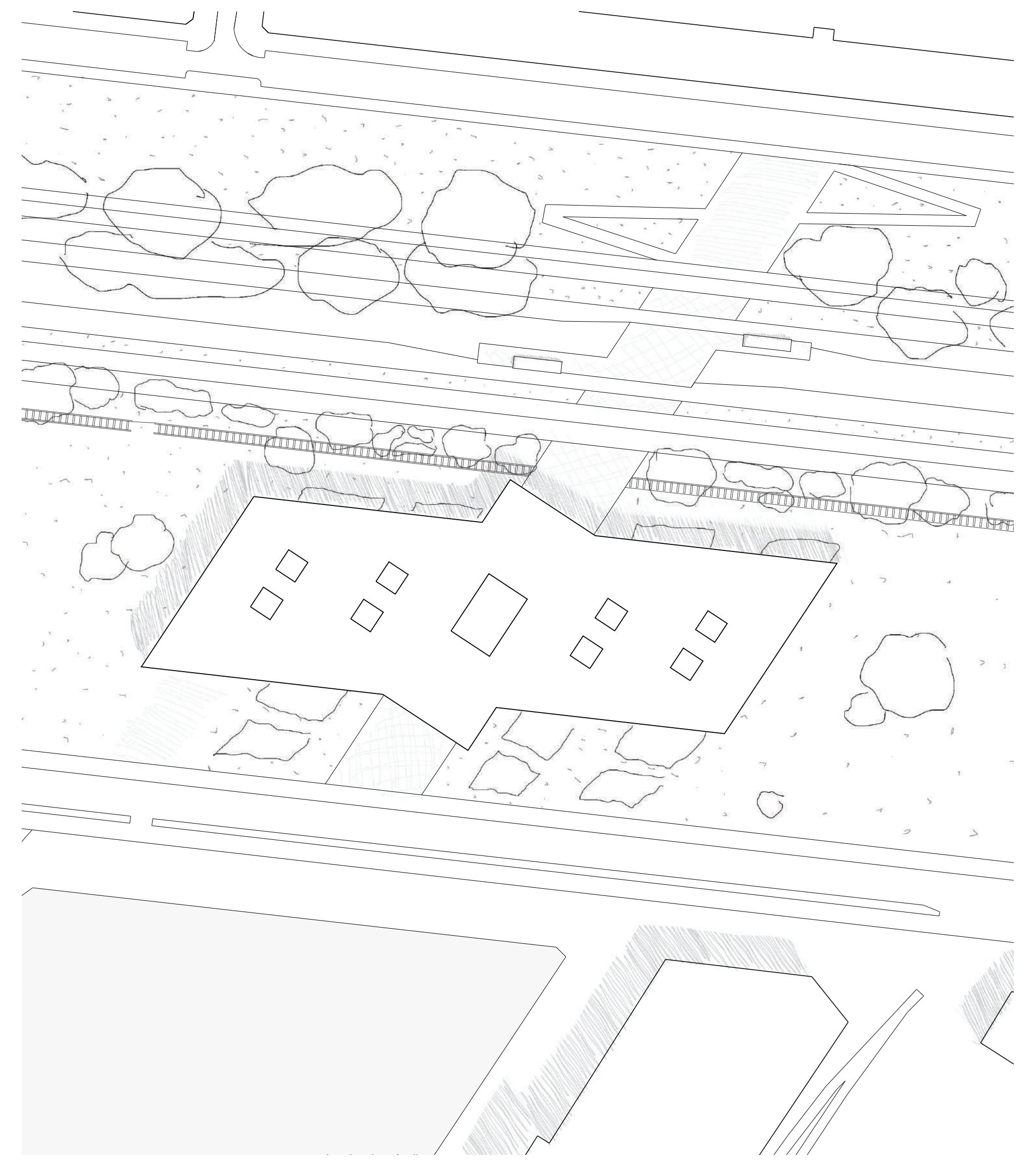
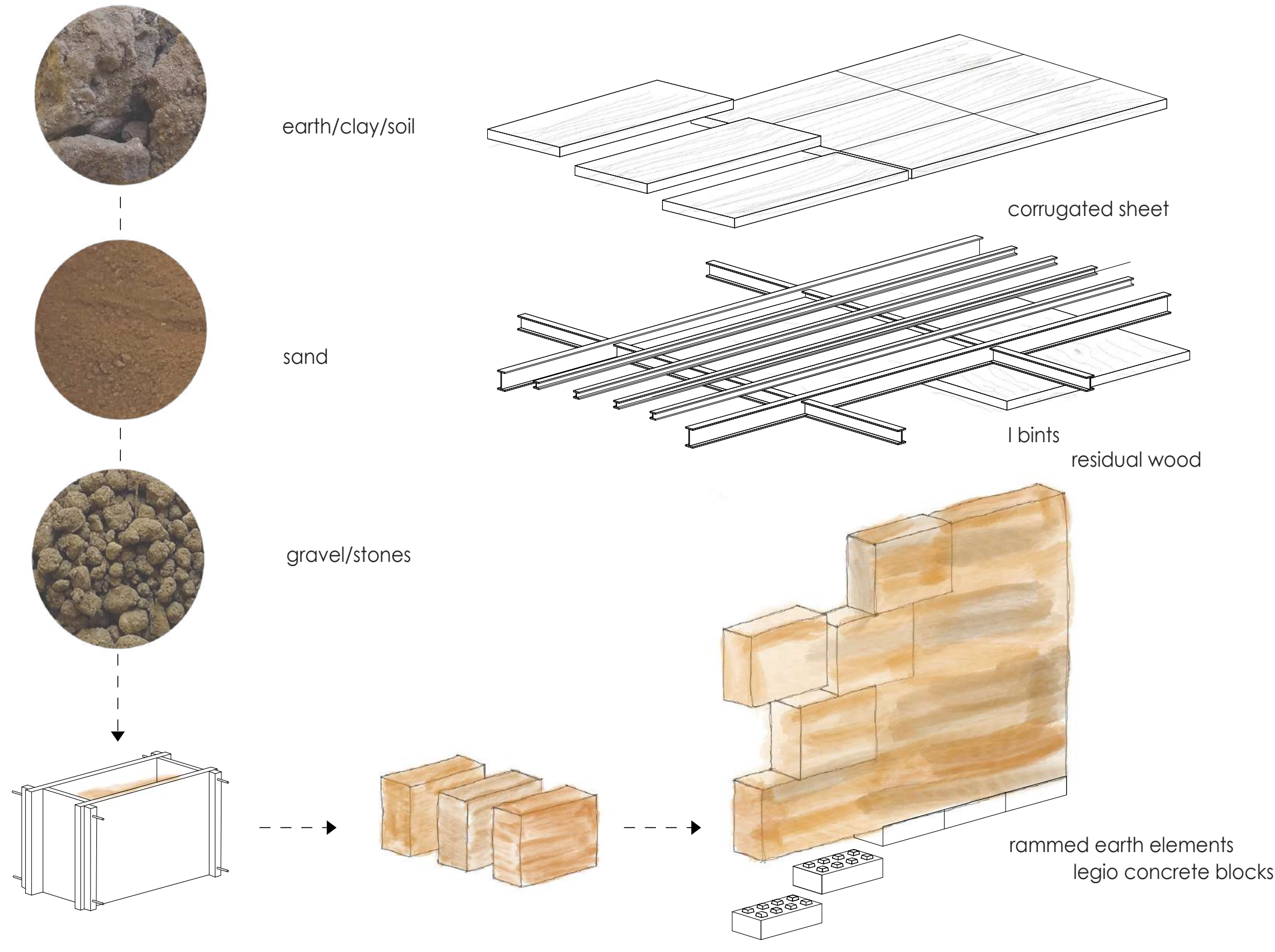
In the harbors a lot of jobs are becoming redundant, making sure that a group of employers will have to consider a career change. On the other side we are short on construction workers and craftsmen.

By Putting a large learning facility in the industrial/harbor area, people have been given the opportunity to re-educate themselves.

Next to being a learning facility, the building is also a space where the large spaces can be rented out to use as event hall, to give lecture, festivities, or as gallery space.

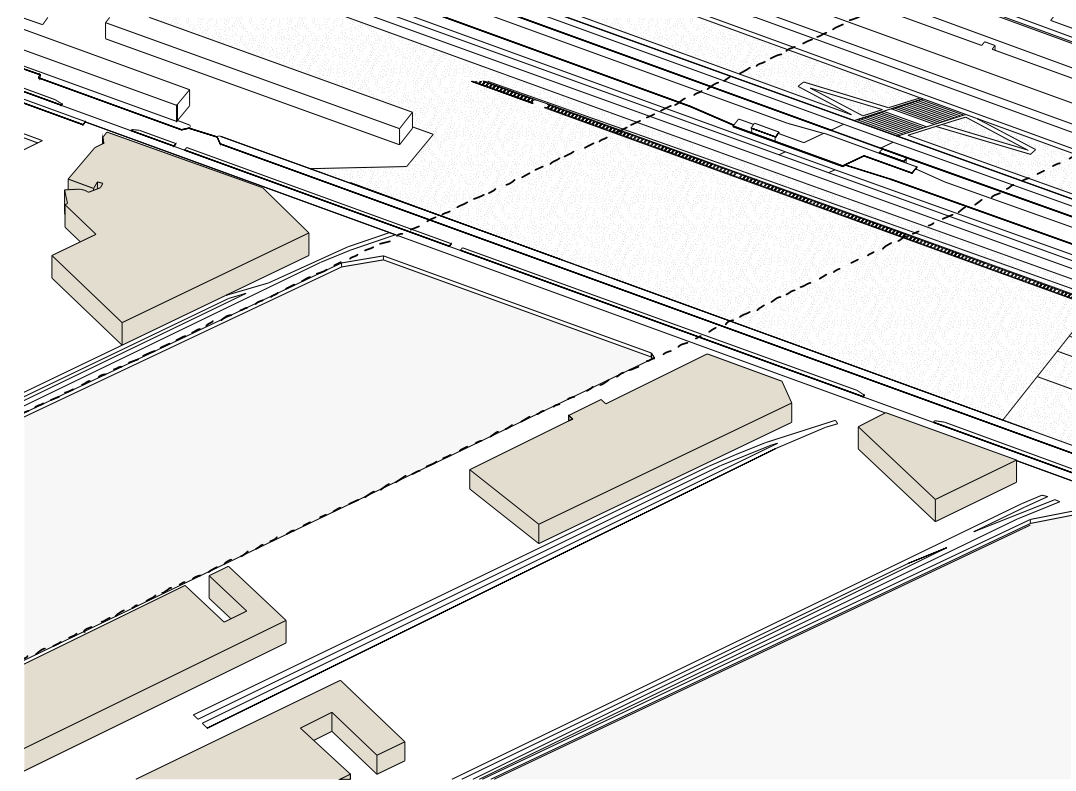
The large cores ensure enough storage facility to make all the rooms multifunctional and the large doors enable you to connect or close spaces off.

The big connector here is rammed earth. By using this material in all its glory, the large walls are constructional, insulation as aesthetic. between these walls people can learn about this material as well as enjoy using a space created with earth.

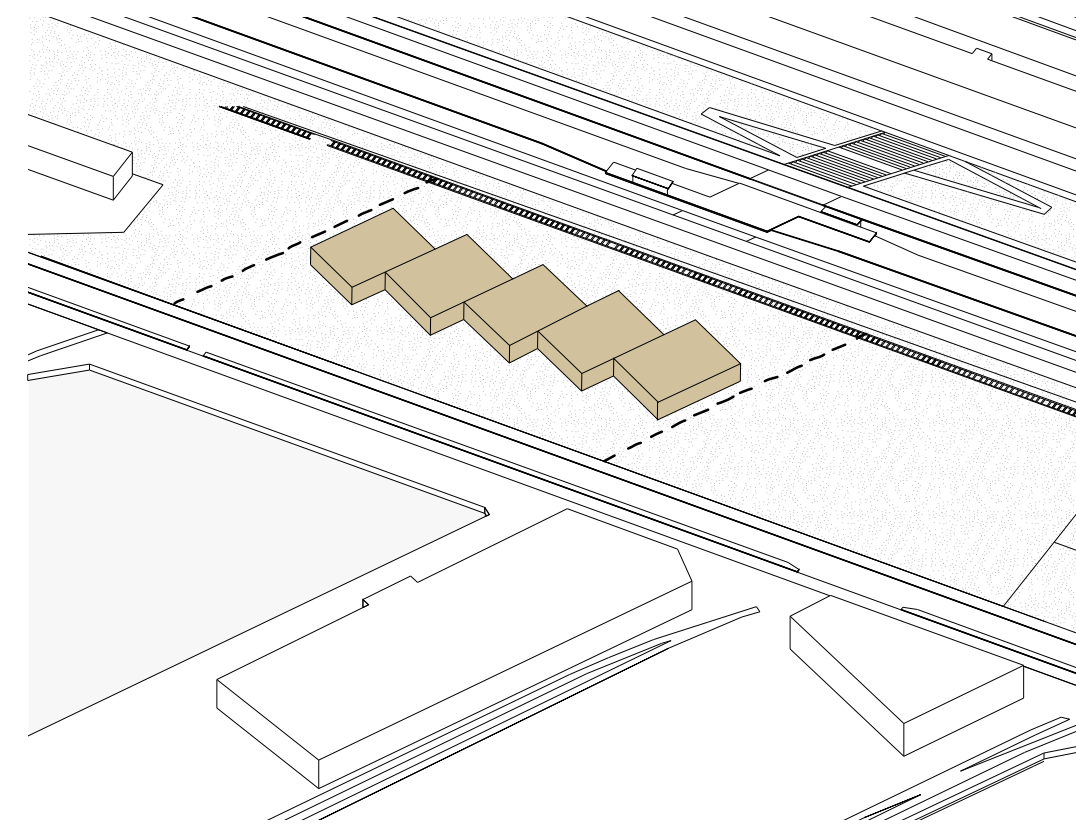


section westside 1:1000

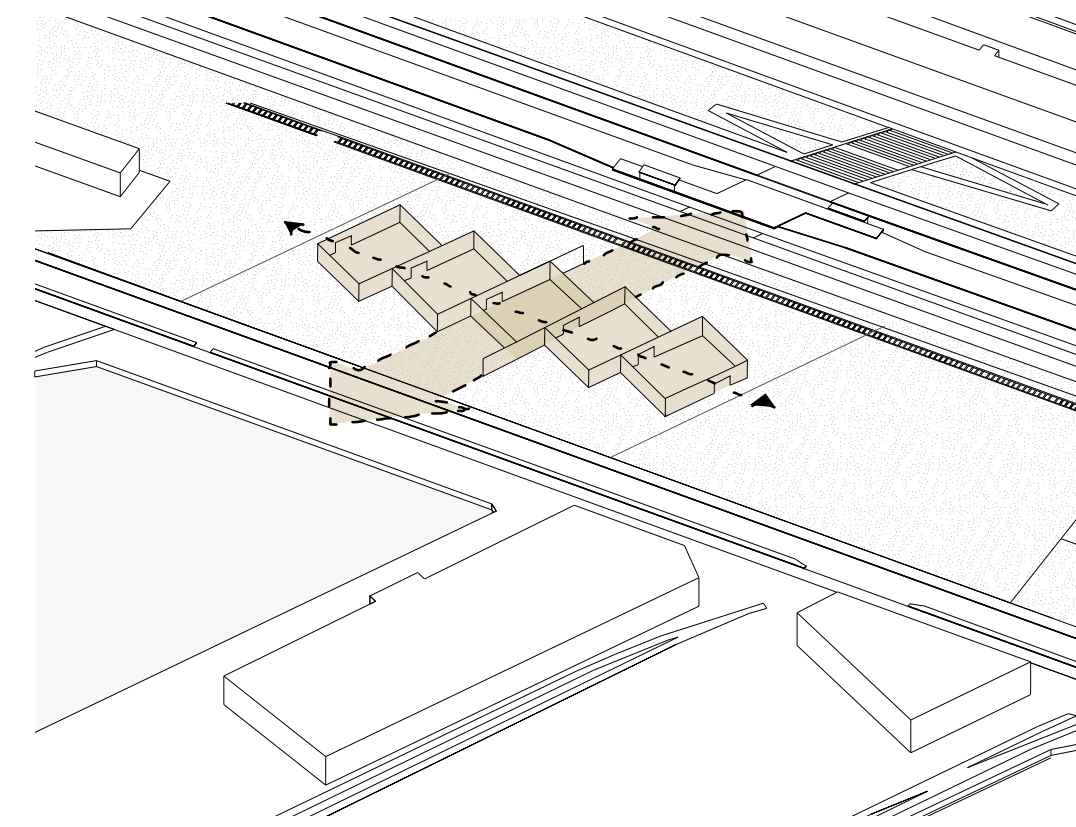
Situatie 1:1000



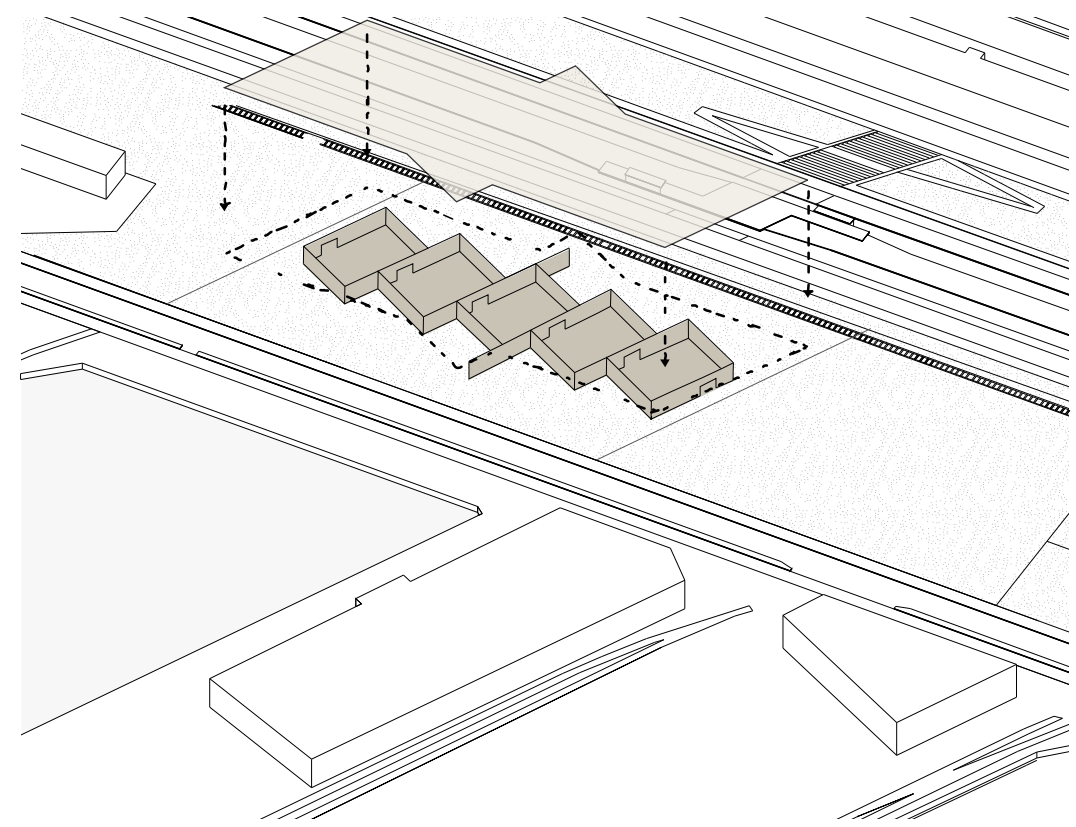
Using the grid lines of the harbor and warehouses



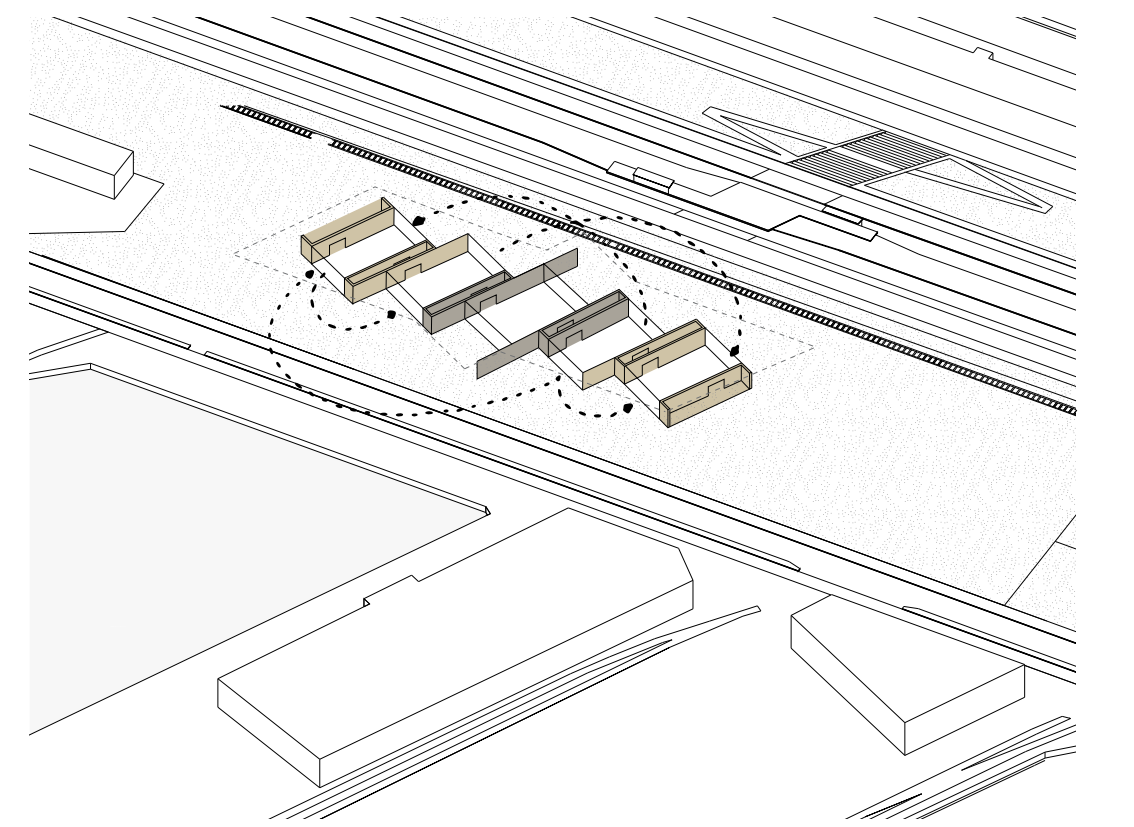
Dividing building in 5 area's



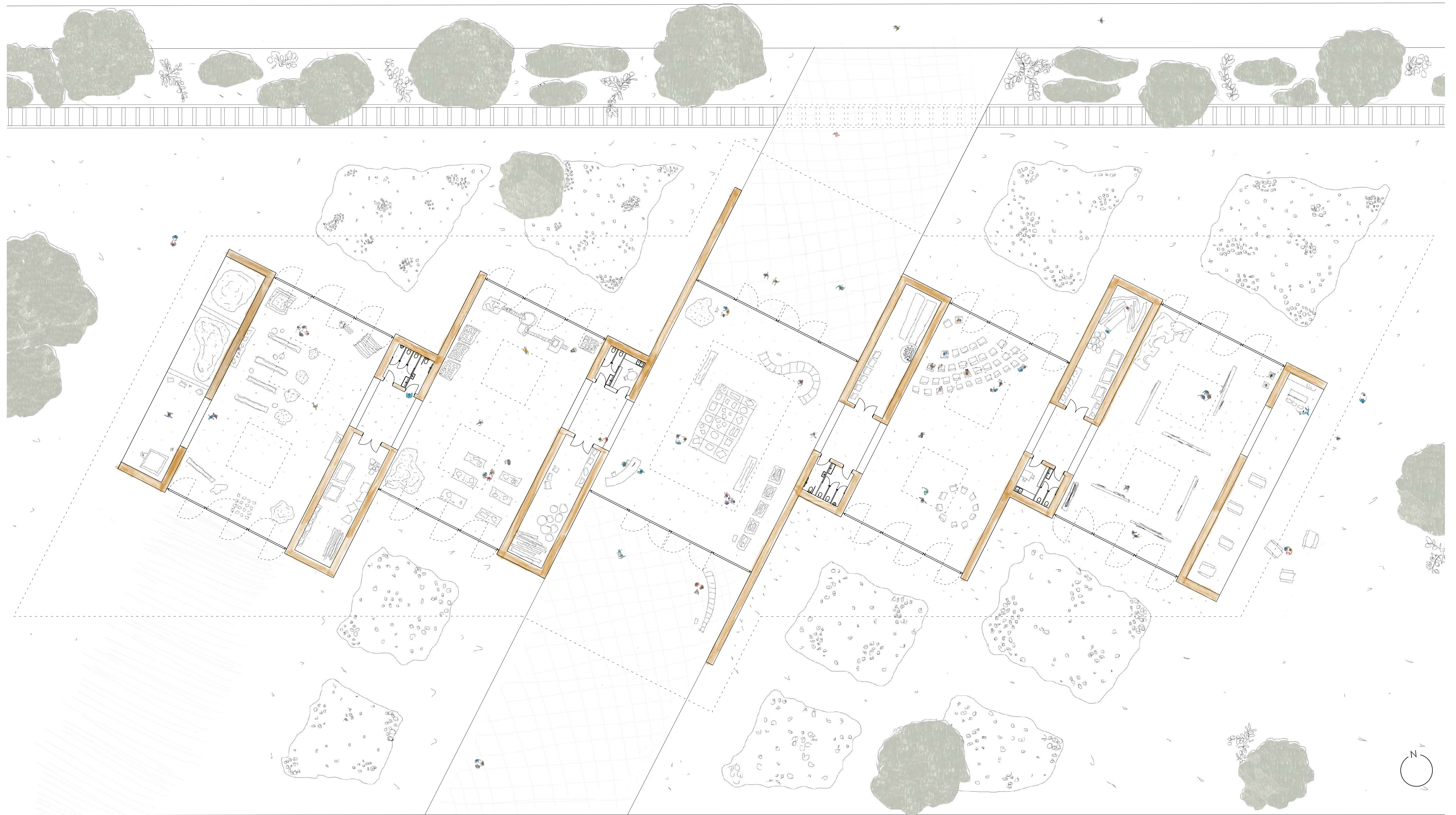
Entrance zone connects harbor and neighborhood



overarching rooftop



interchangeable workshop/gallery/lecture spaces with individual storage and facilities



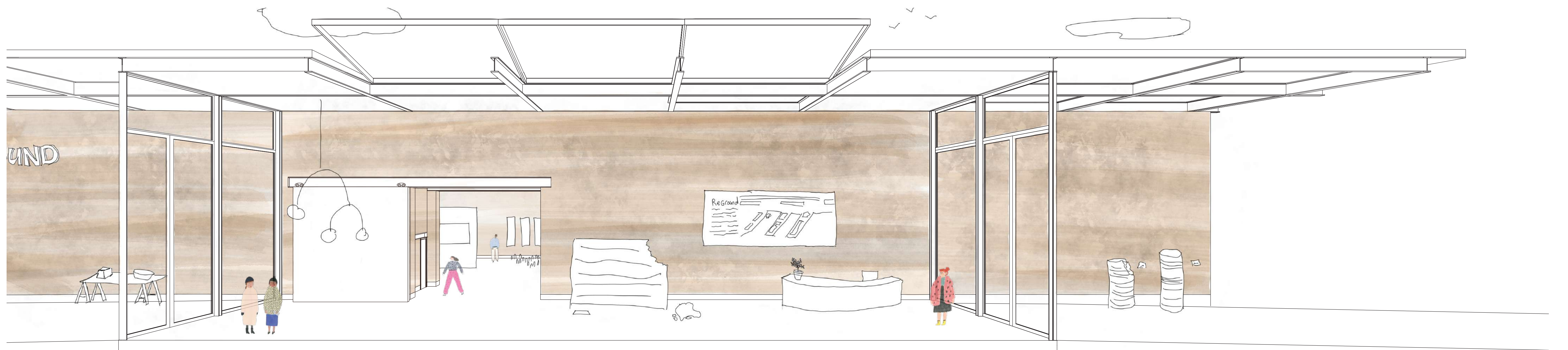
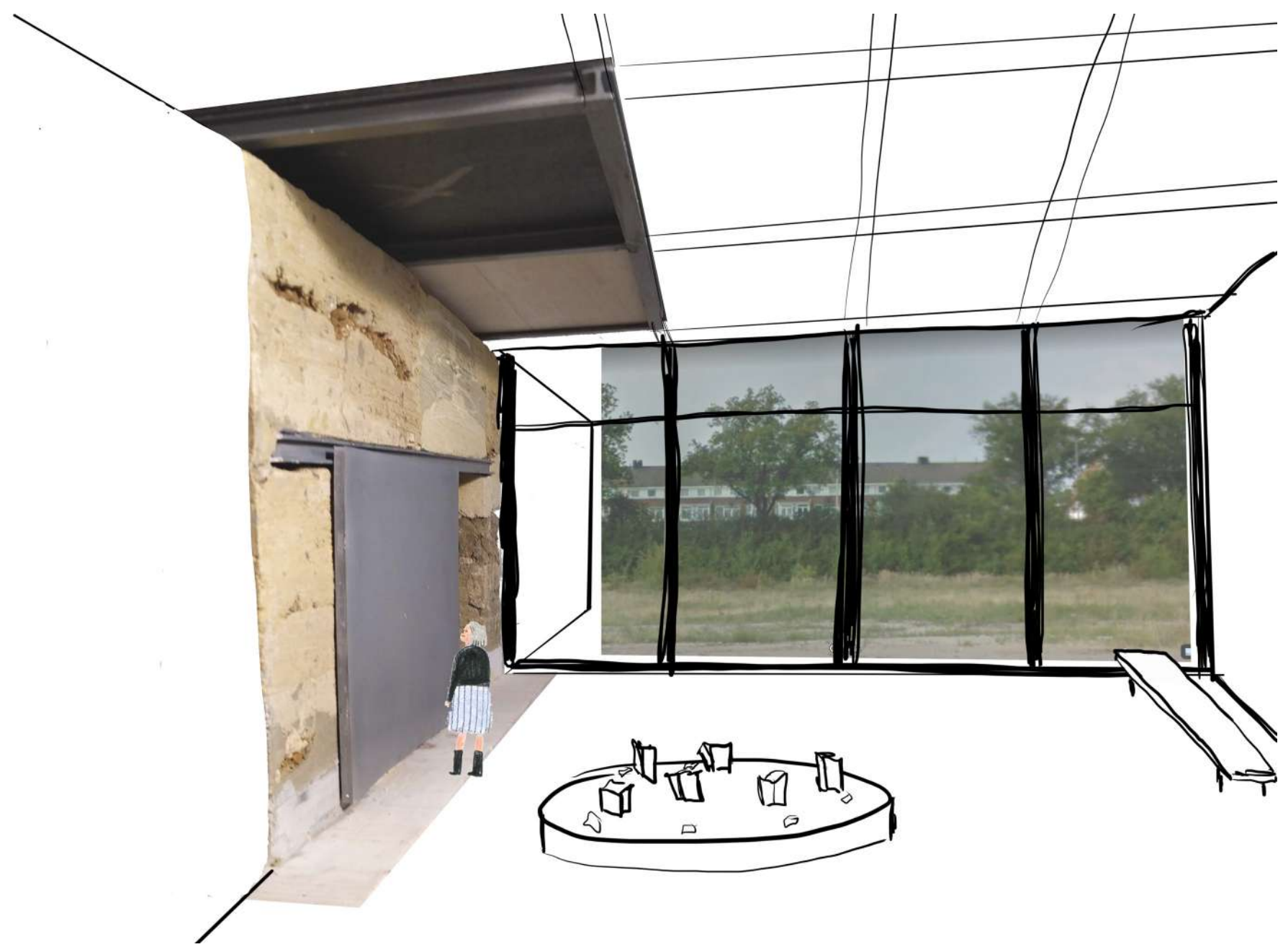
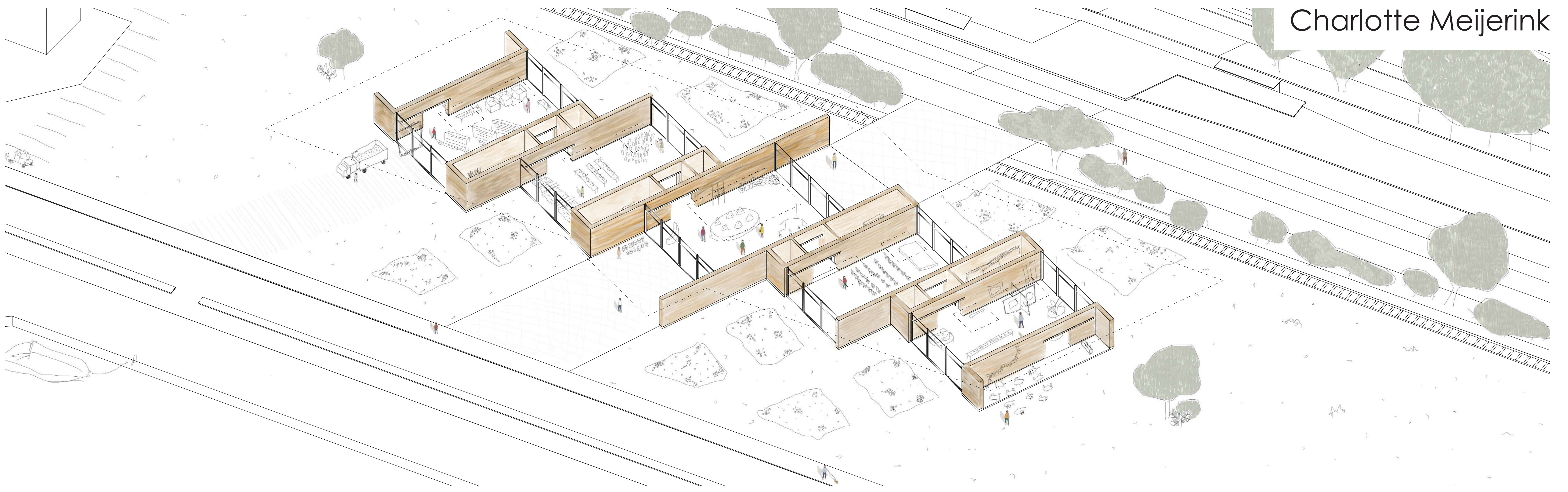
Floorplan 1:200



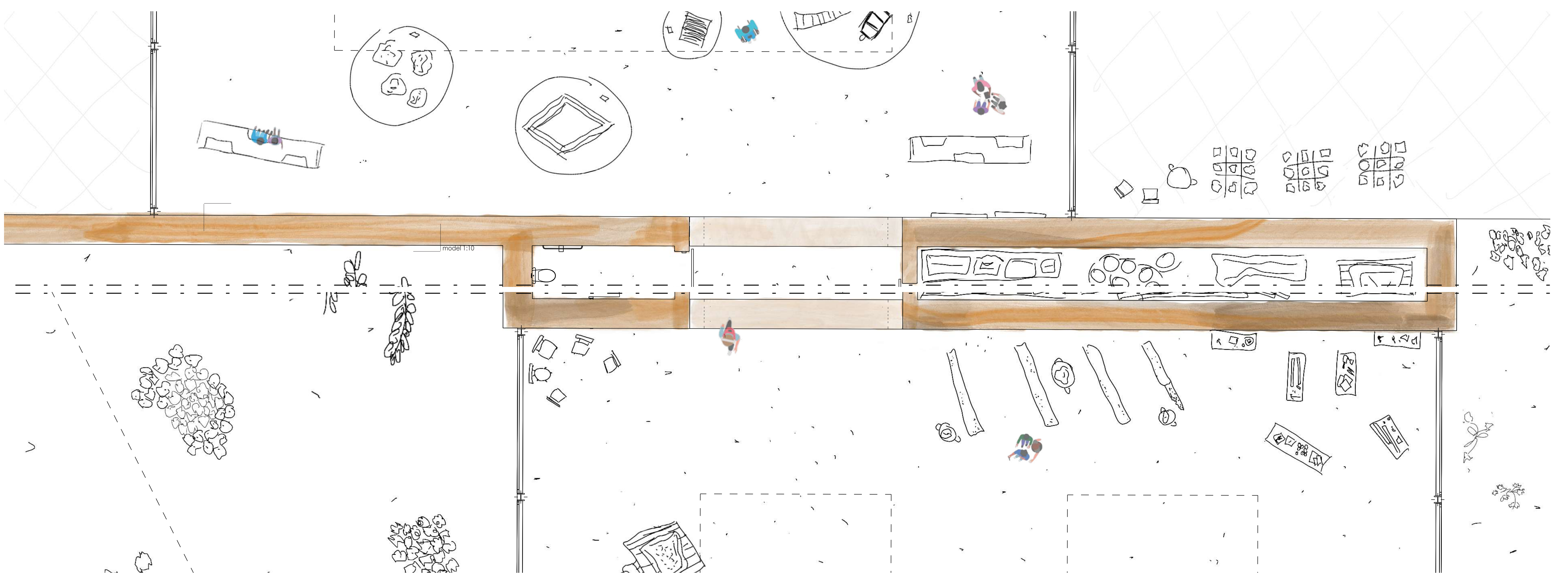
Section/elevation southside 1:200



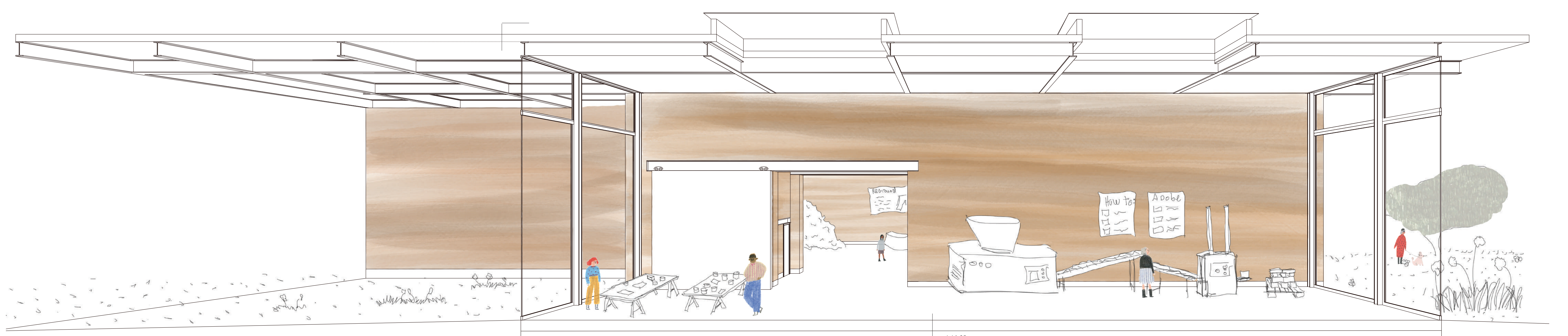
Elevation westside 1:200



Section entrance 1:50



Floorplan entrance/workshop space 1:50



Section workshop space 1:50