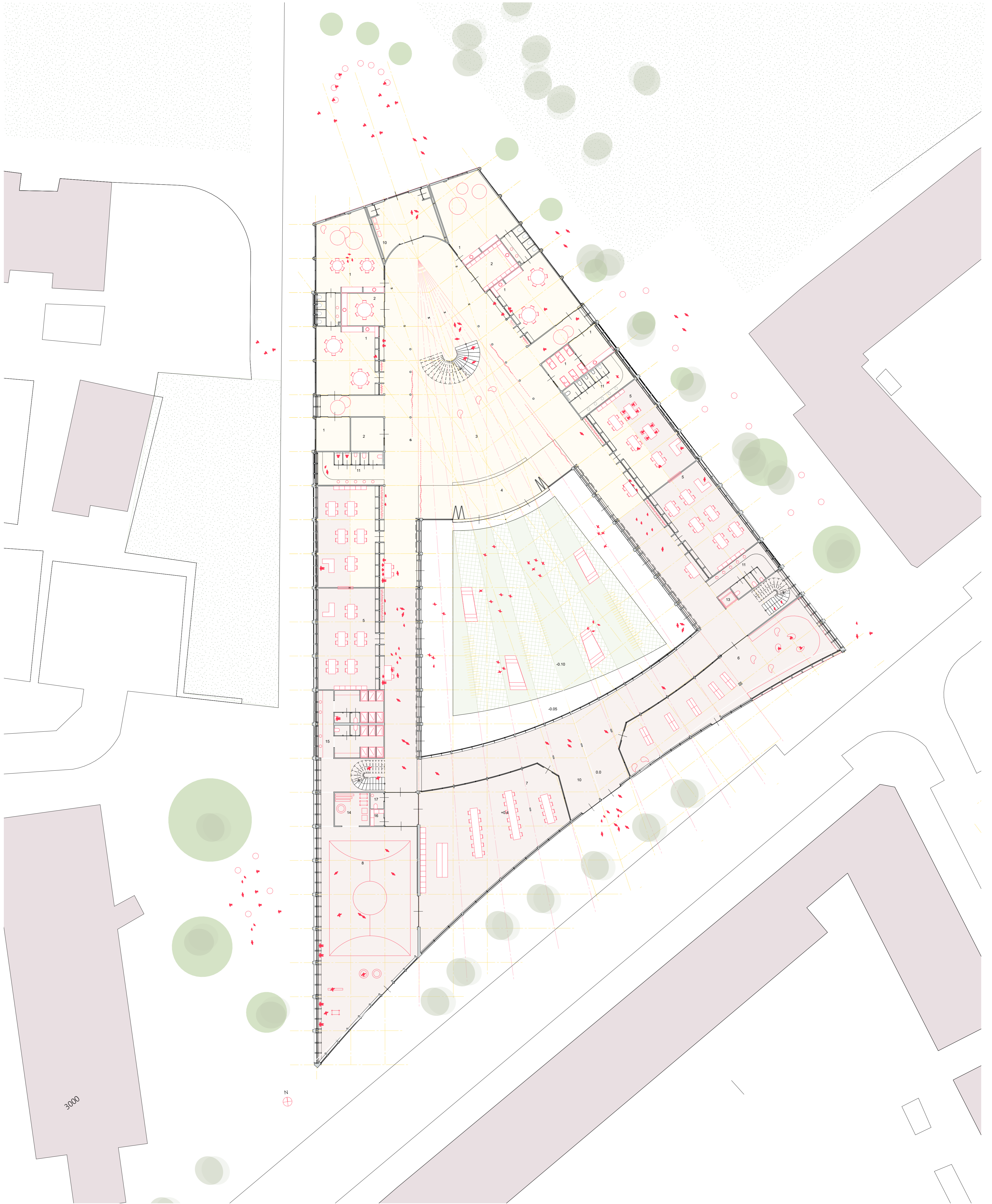


DE SCHALM INTO THE TIMBER AGE

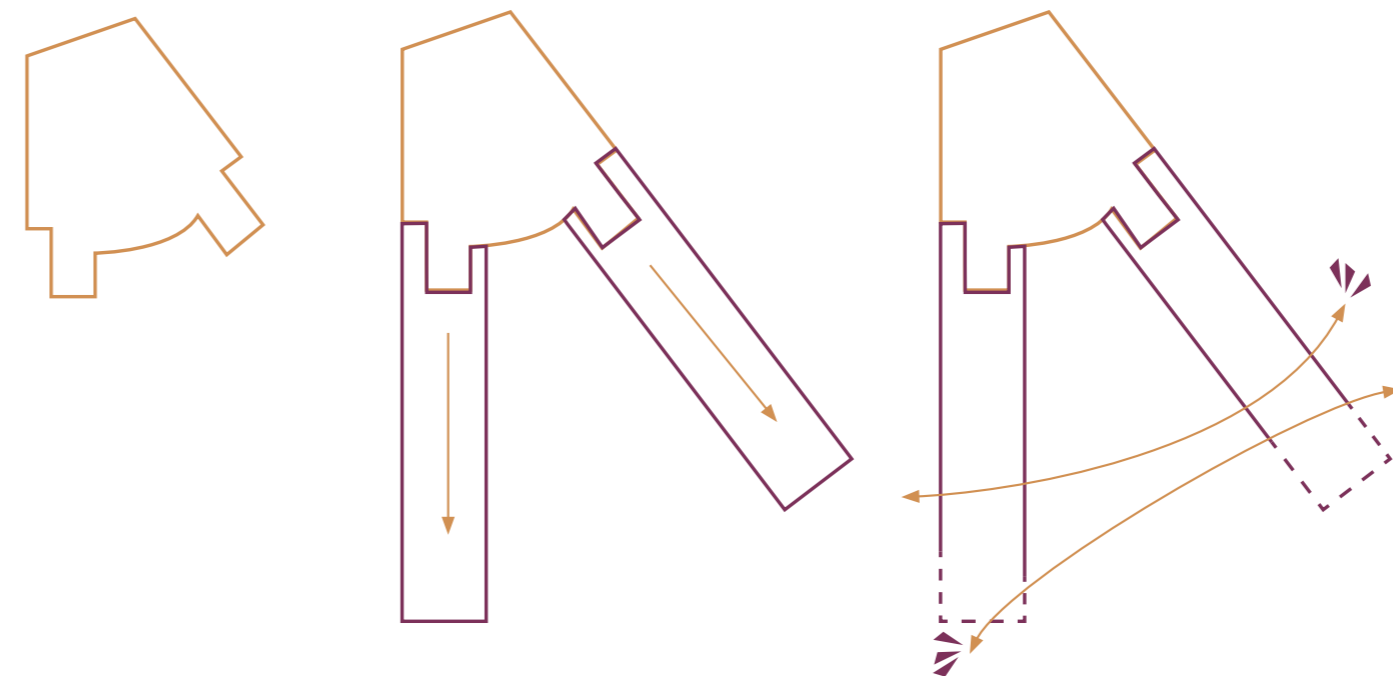


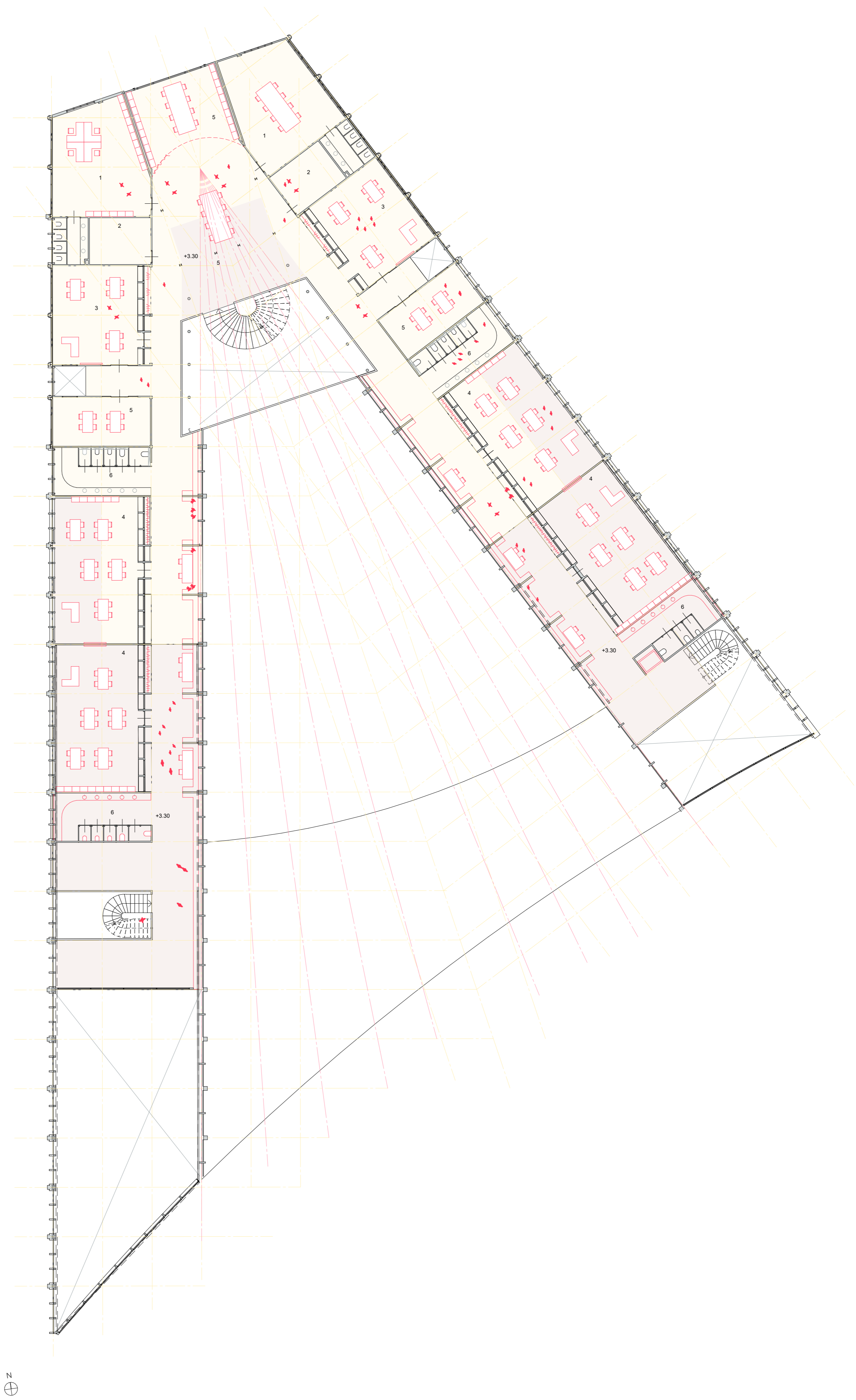
Ground Floor 1:200

- 1. Kindergarten
- 2. Staff kindergarten
- 3. Playing area
- 4. Podium
- 5. Lower school
- 6. Library
- 7. Cantine
- 8. Gym
- 9. Entrance
- 10. Entrance
- 11. Toilets
- 13. Lift
- 14. Storage gym
- 15. Changing gym
- 16. Storage cantine



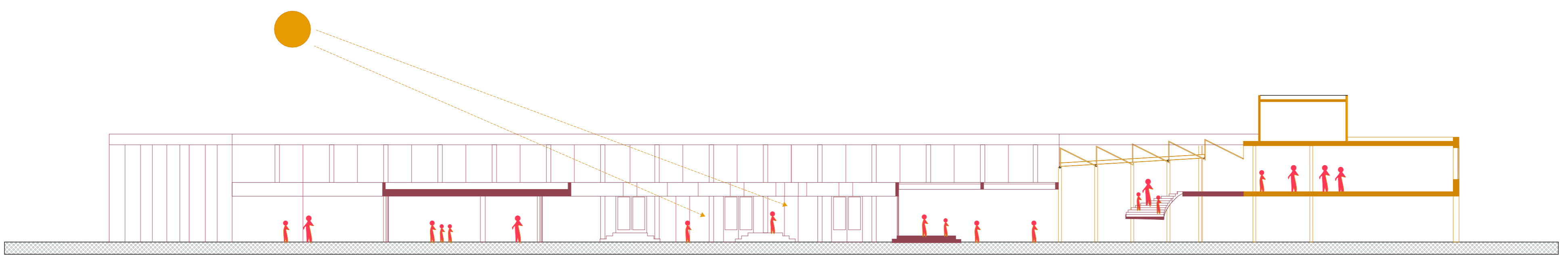
Situation 1:2000





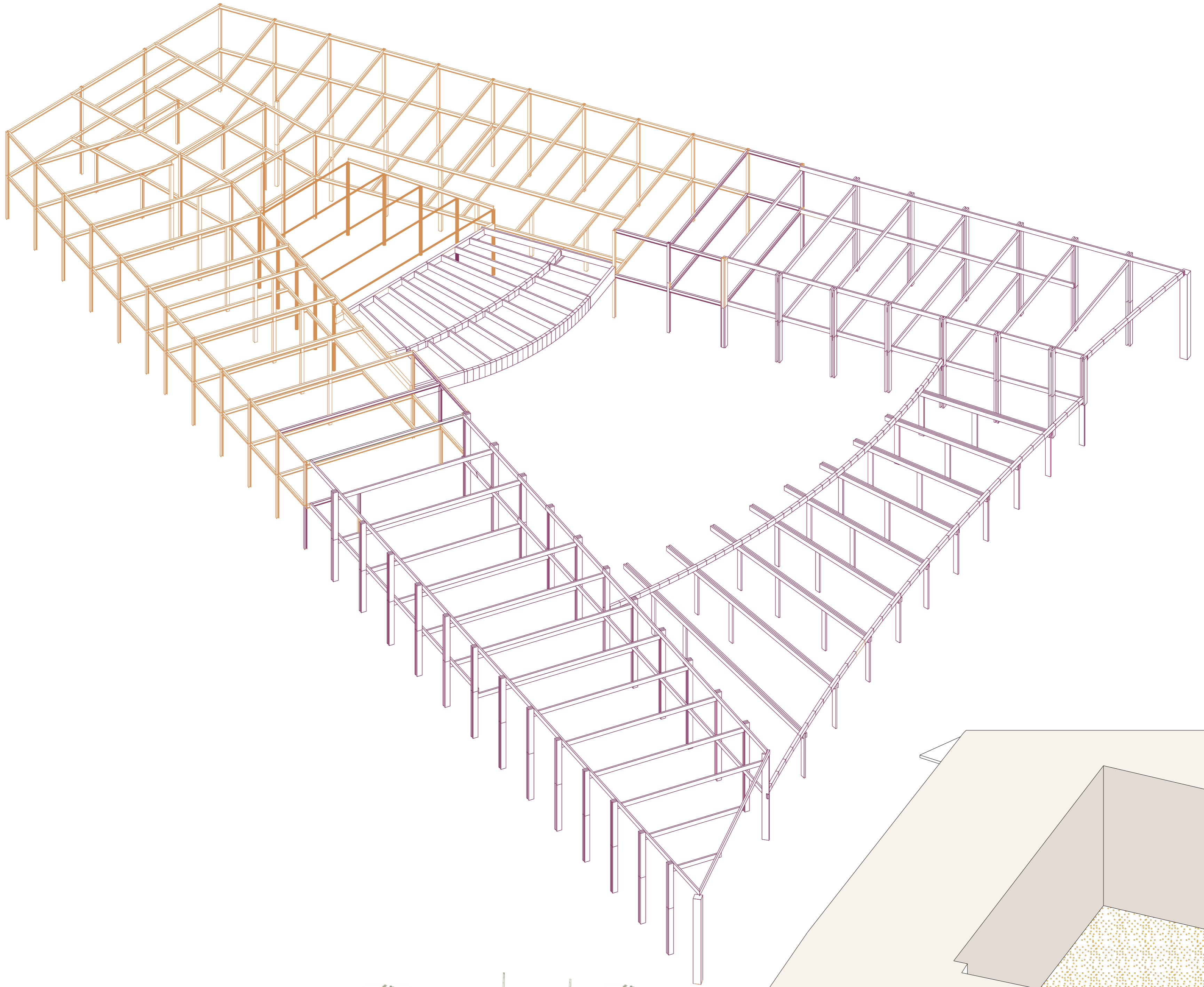
First Floor 1:200

- 1. Staff
- 2. Storage staff
- 3. Lower school
- 4. Upper school
- 5. Shared space
- 6. Toilets



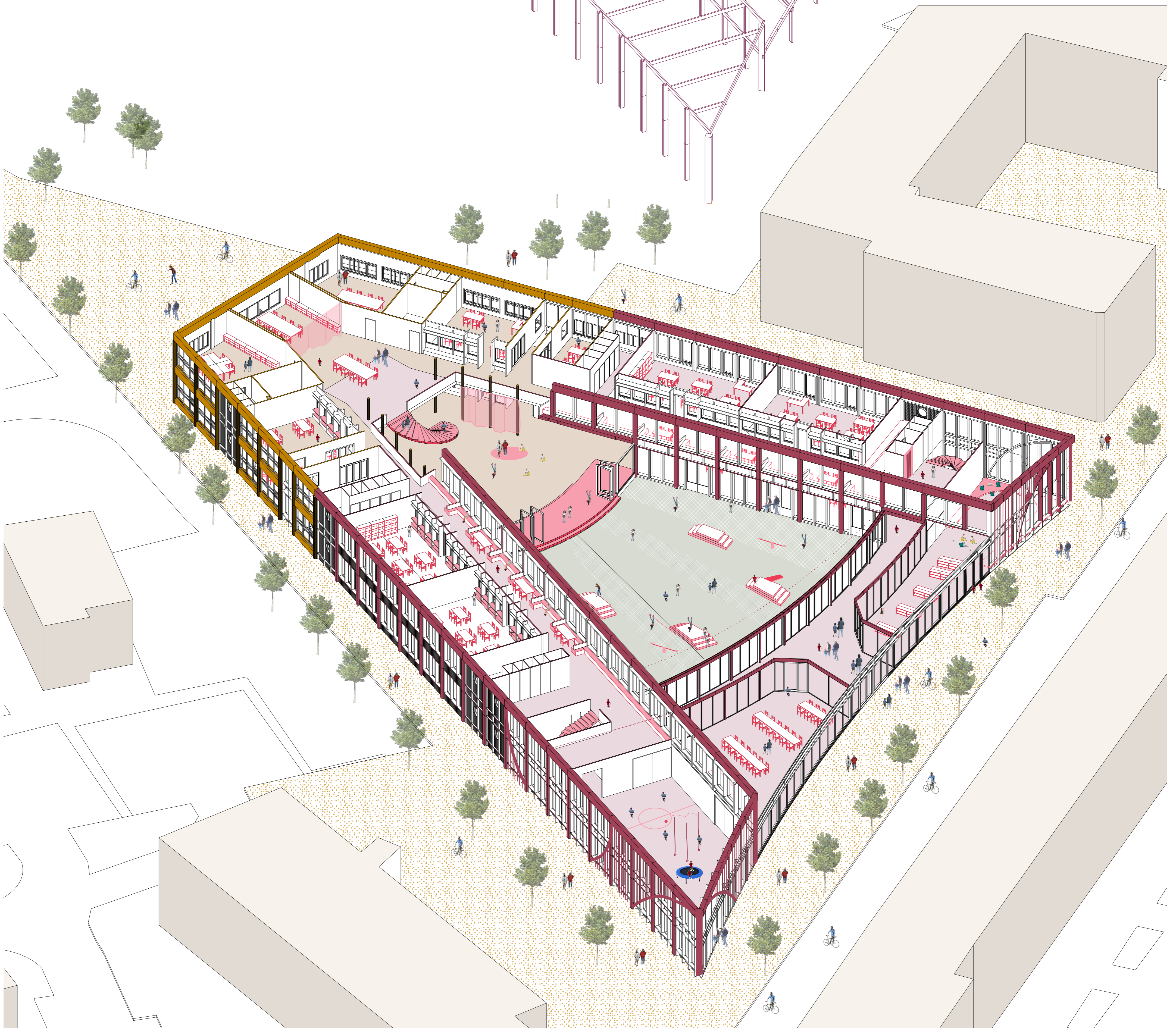
Section 1:200

DE SCHALM INTO THE TIMBER AGE



Axonometry  
Structure  
Use

Old ● & New ●





View from the Katendrechtstraat towards de Schalm



View from the courtyard towards the transformed podium



Facade fragment in relation to the inside



**DE SCHALM** is a school designed and built in de 80's by the architecture firm Van Den Broek & Bakema.

Currently the school is on the list of demolishment of the municipality, the reasons are unclear.

We have a beautifully designed school with double height spaces for the theater and interactions between classrooms.

DeSchalm should not be demolished, an act that no longer suits the current times, it should be improved and adapted to the demand of students and other inhabitants of Katendrecht.

For that reason we give the existing steel structure a sustainable extension, not only serving the school but also the neighbourhood, making a public street inside de Schalm, containing a library, cantine and gym.

This way we create a new timber piece of Katendrecht ready for a more sustainable age.