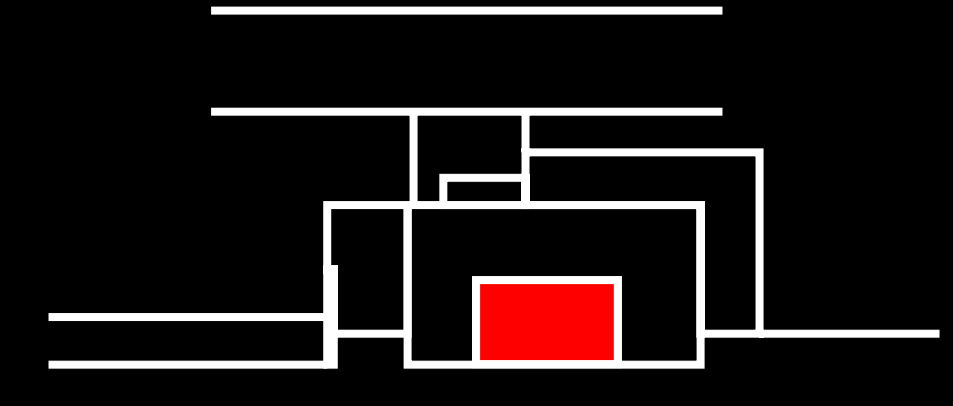
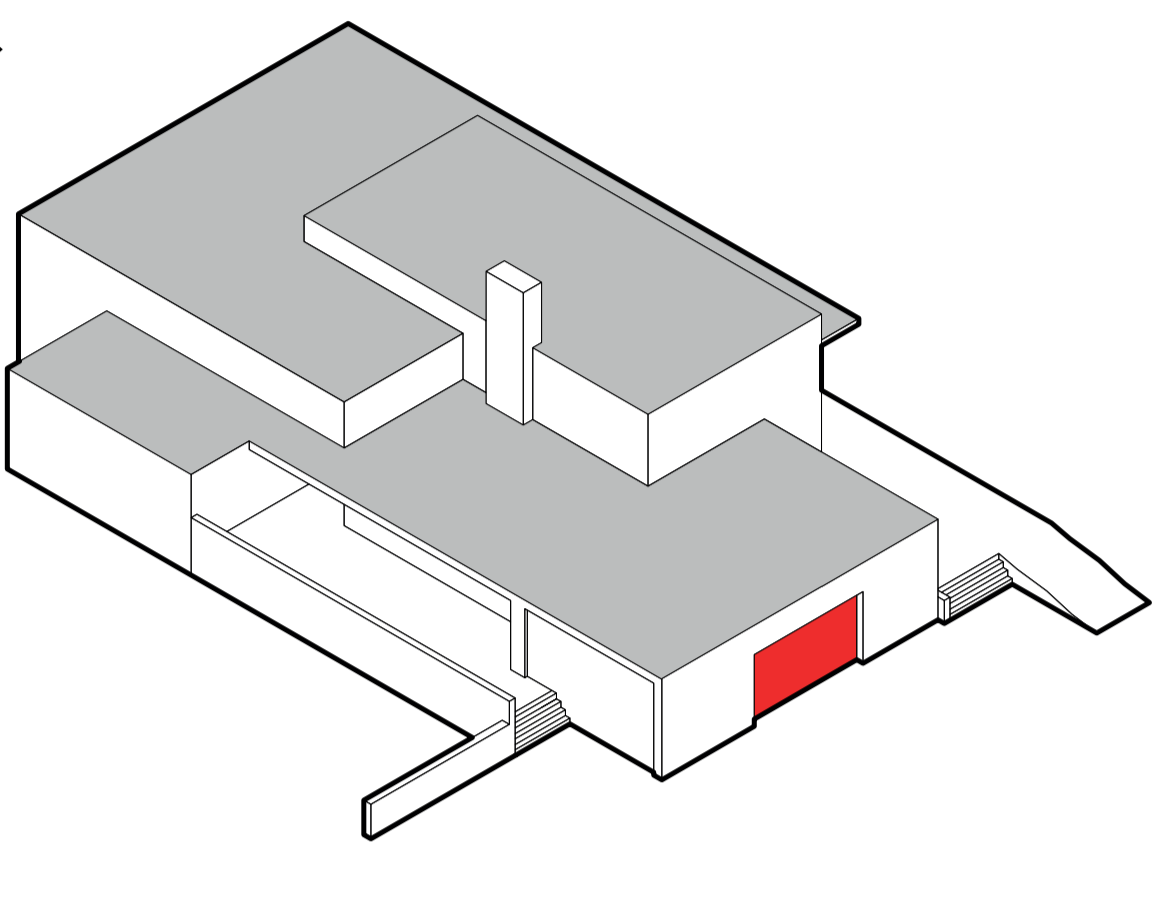


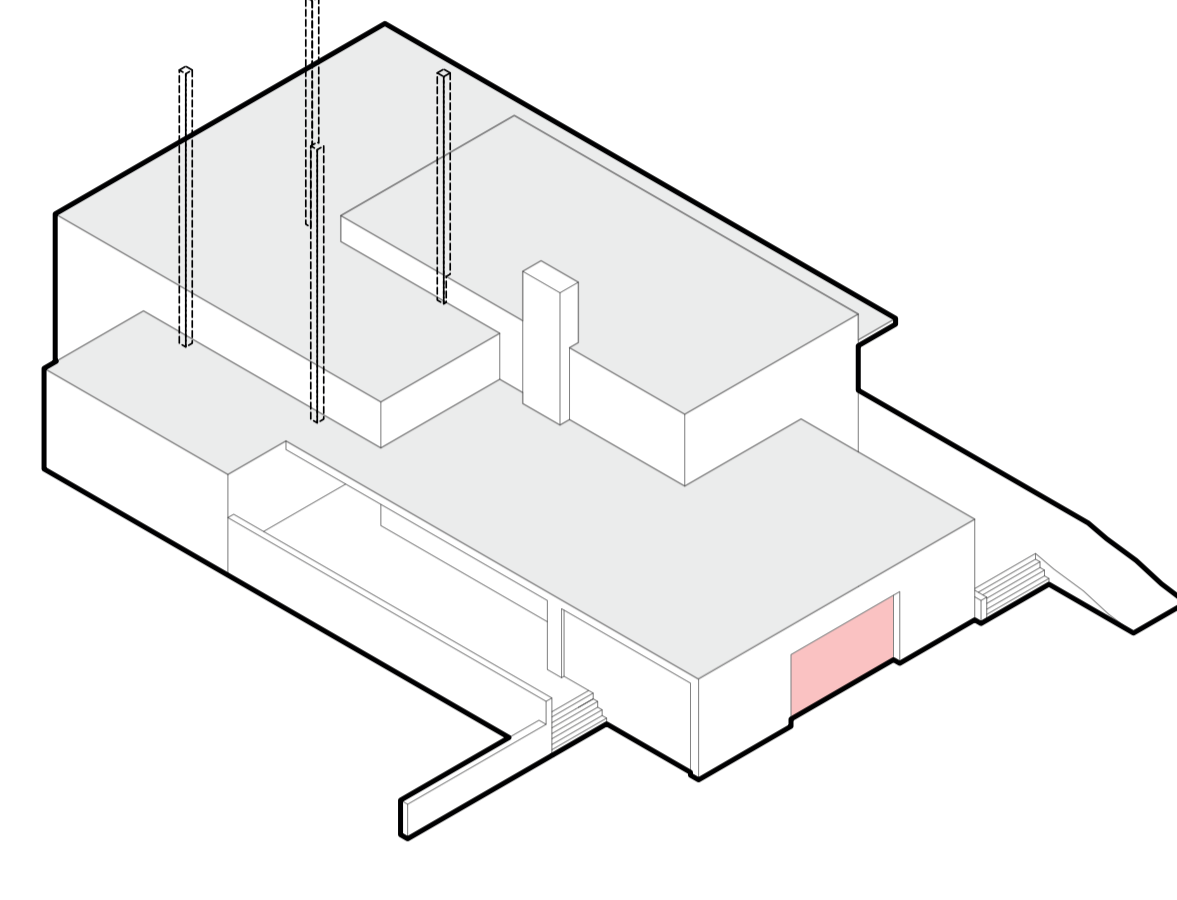
WOONHUIS VAN DEN DOEL UITBREIDING TOT GENERATIE WONING



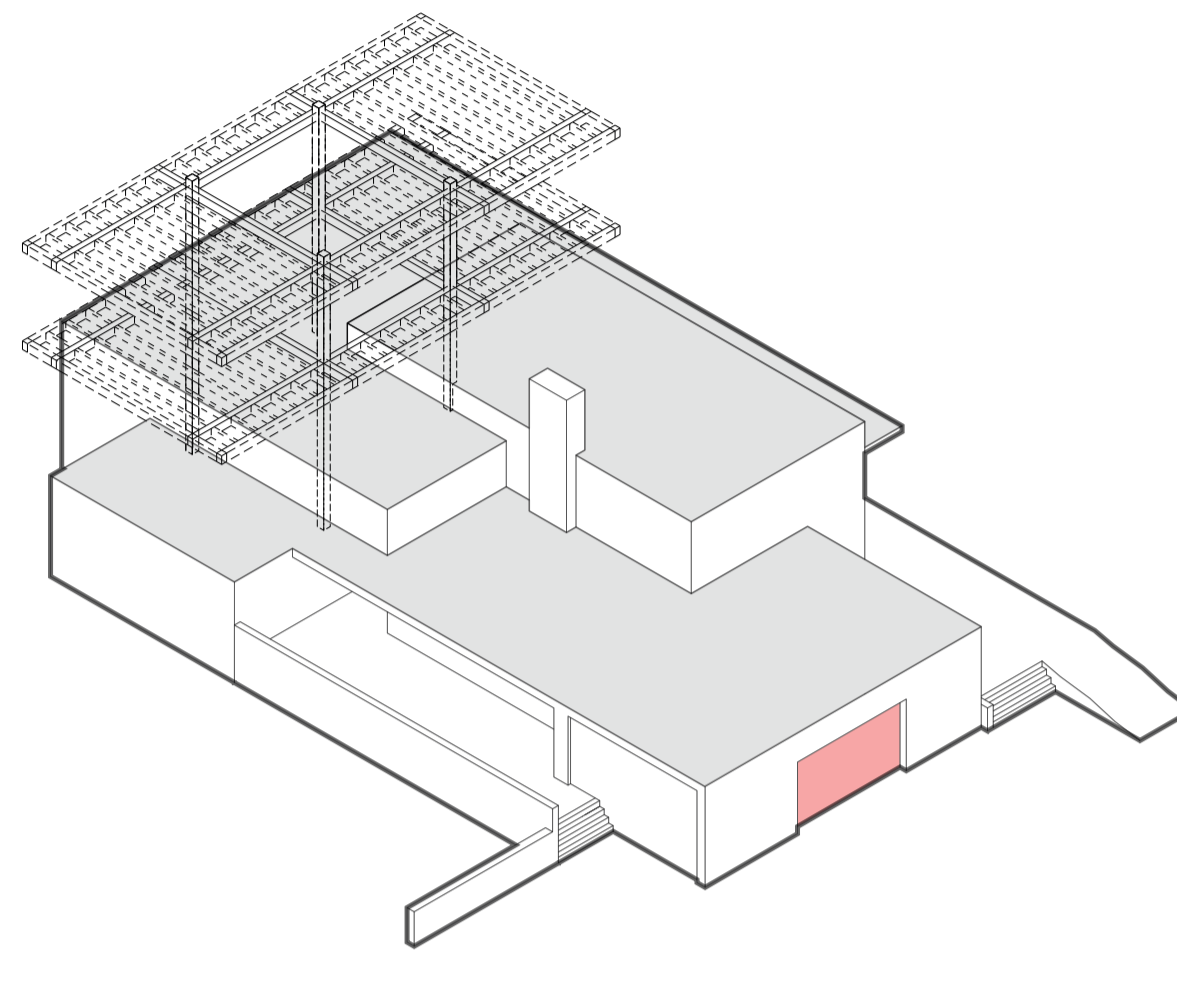
concept diagram



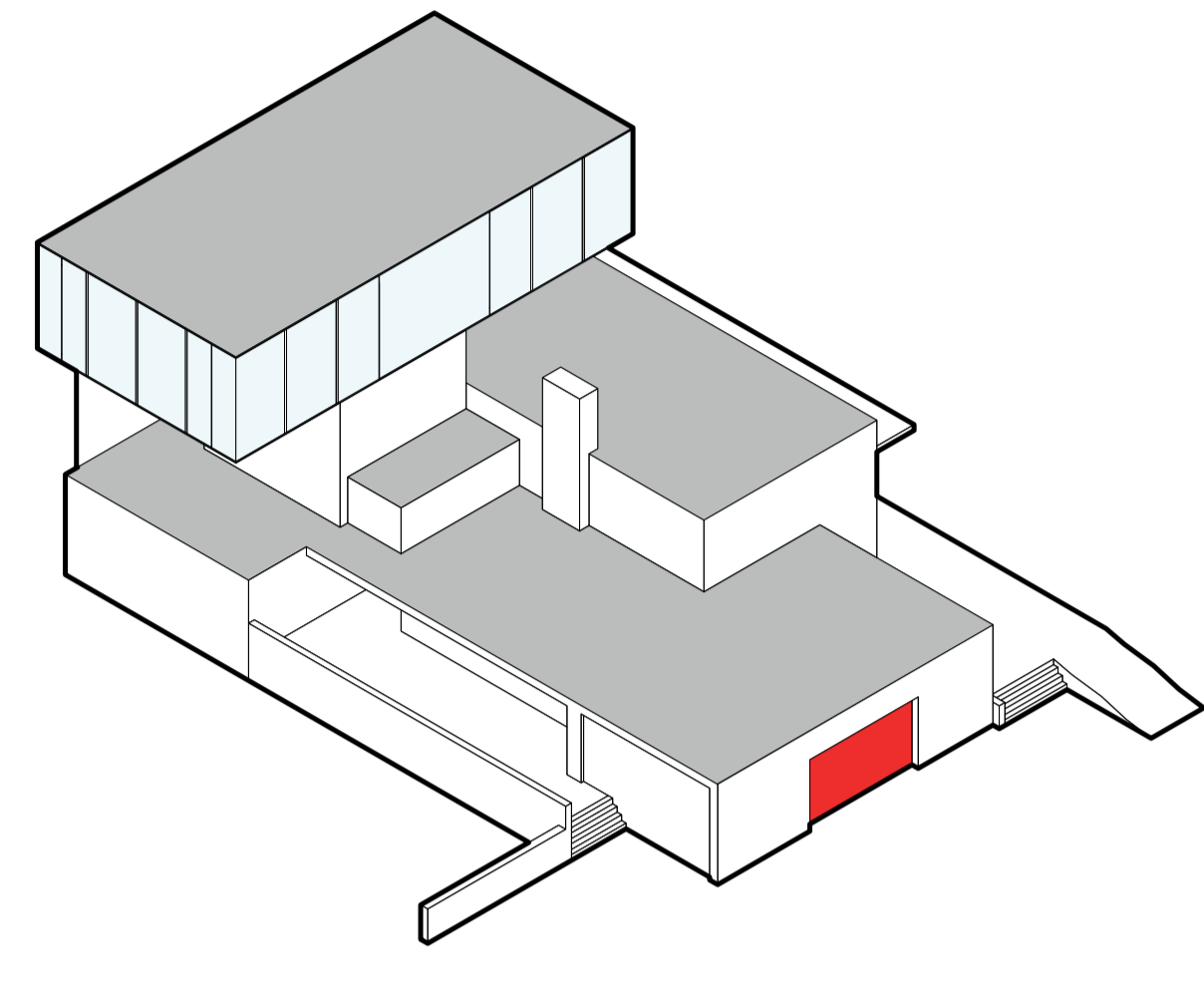
bestaande ensemble



verbinding met de kern

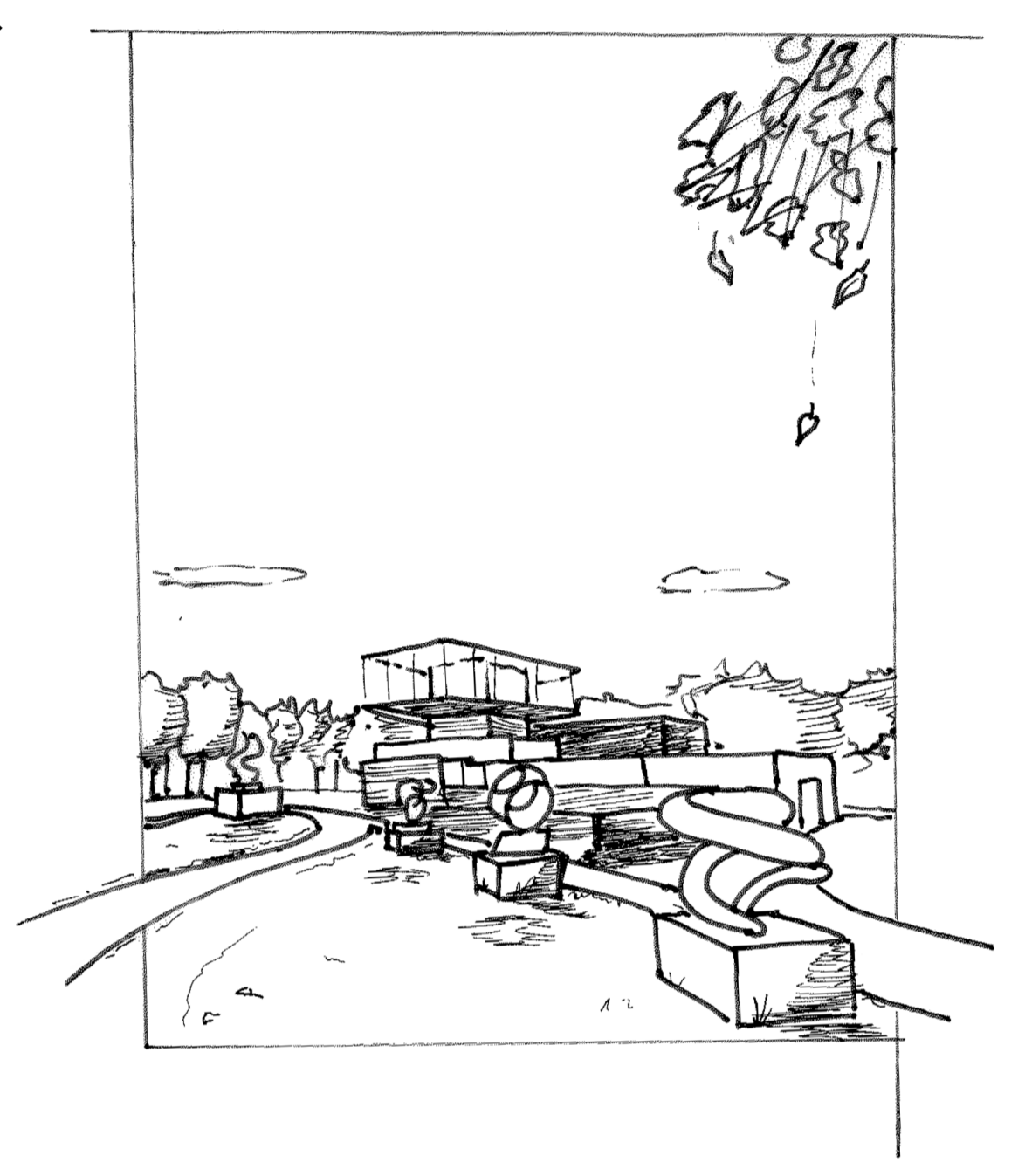


ondersteuning uitbreiding

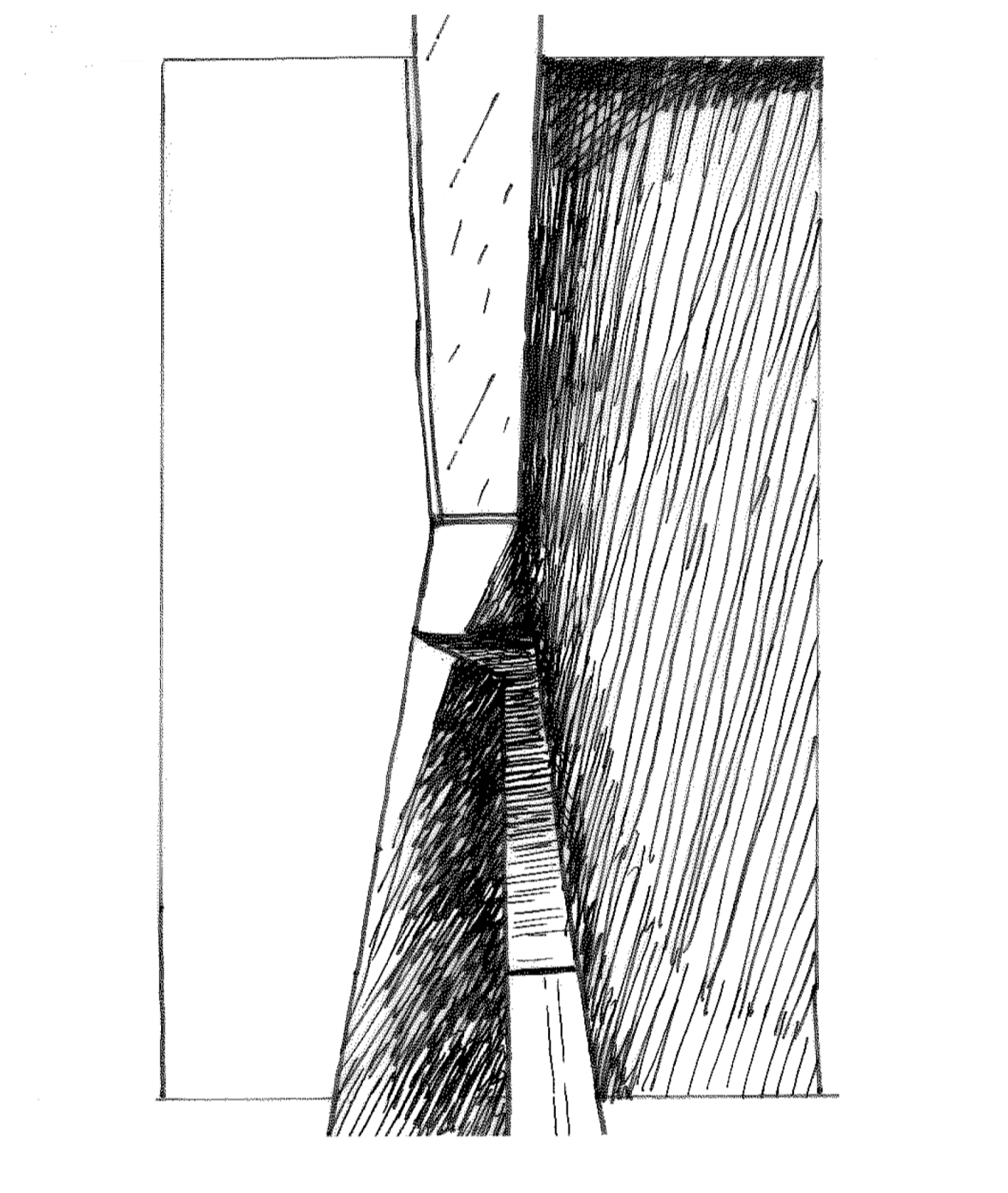


facade aankleding

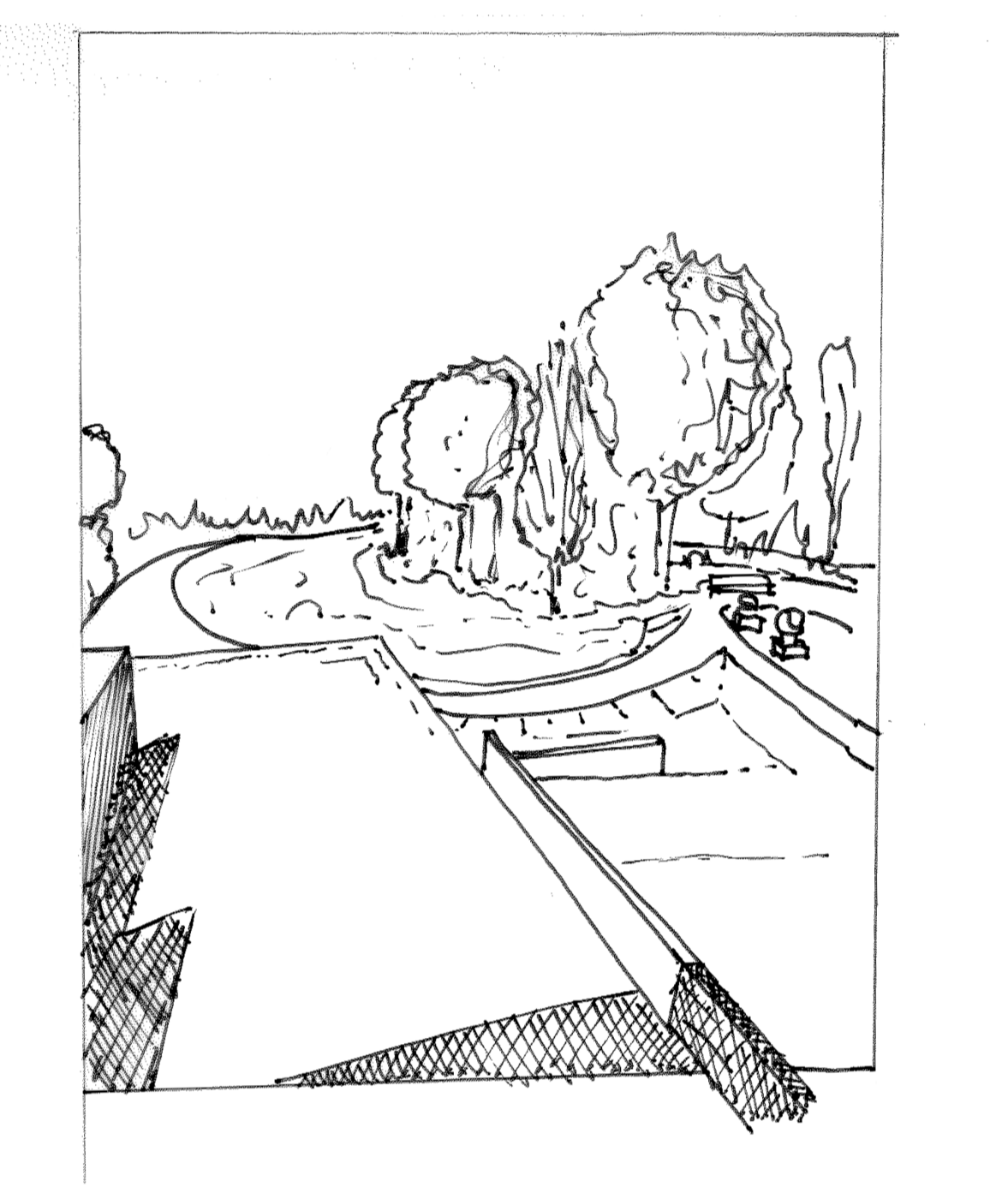
Promenade beelden



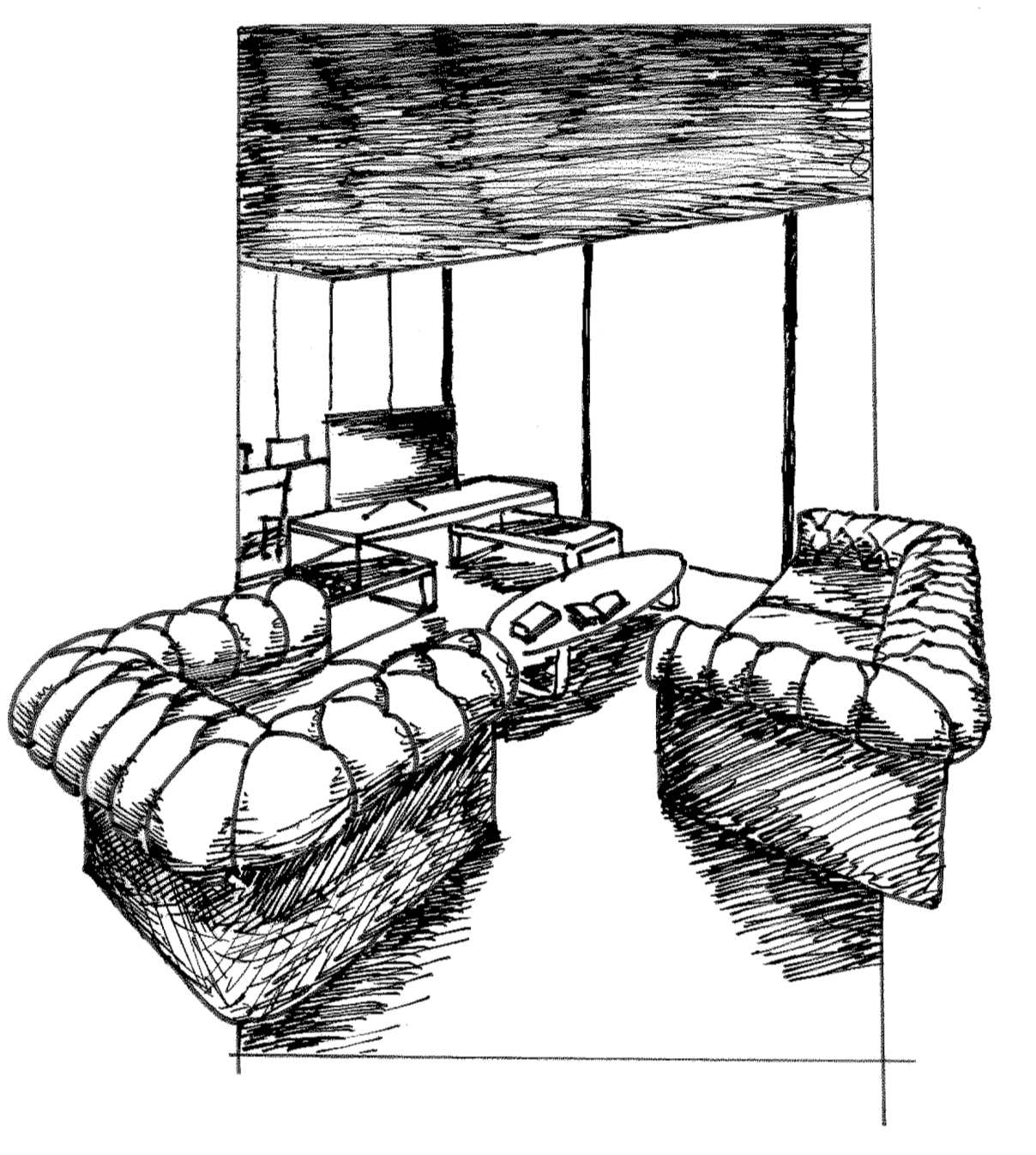
"Rustplek"



"Oneindigheid"

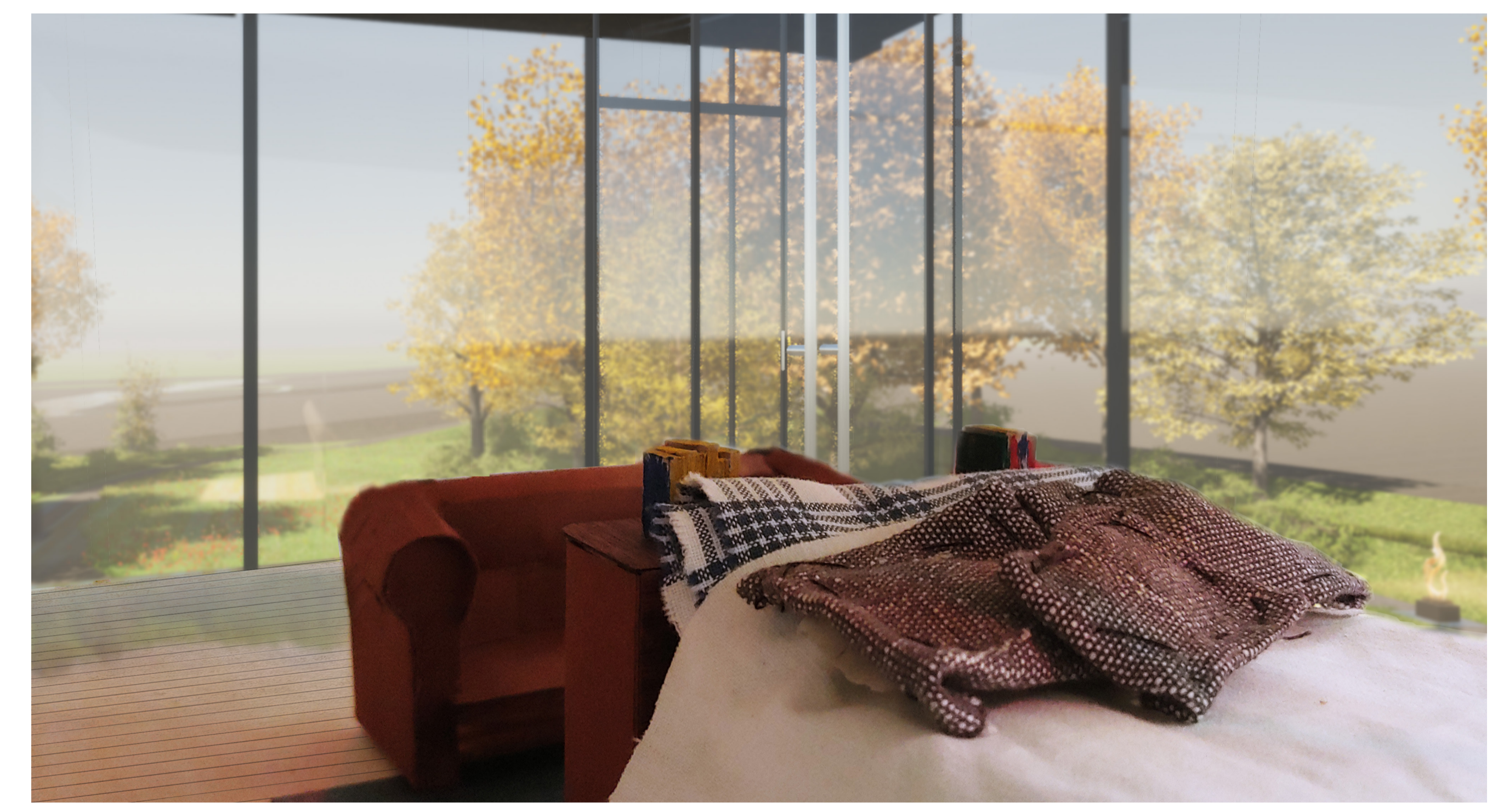


"Buitenkomst"

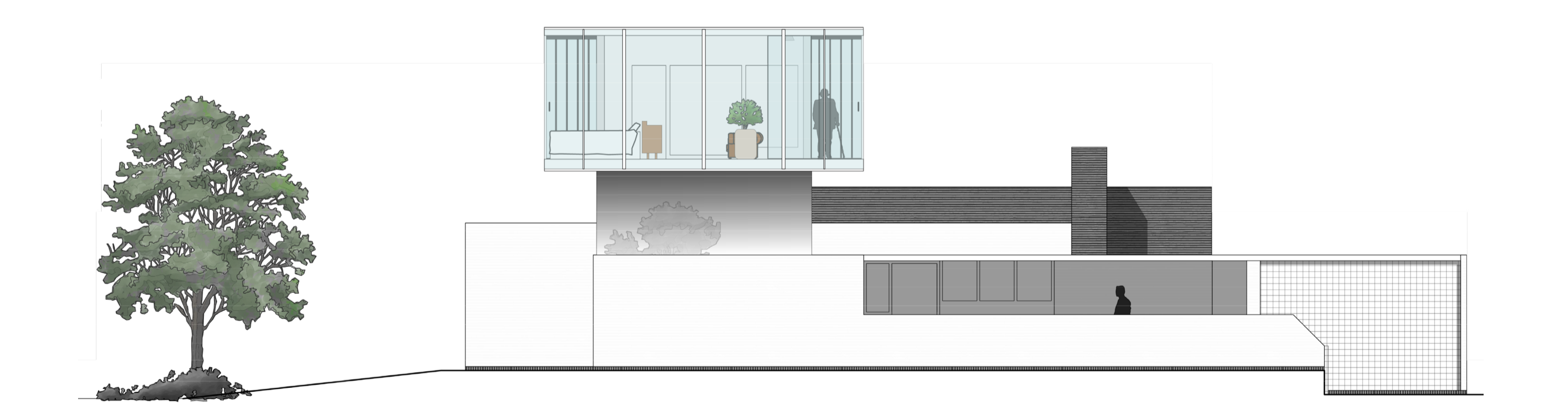


"Huiselijk geluk"

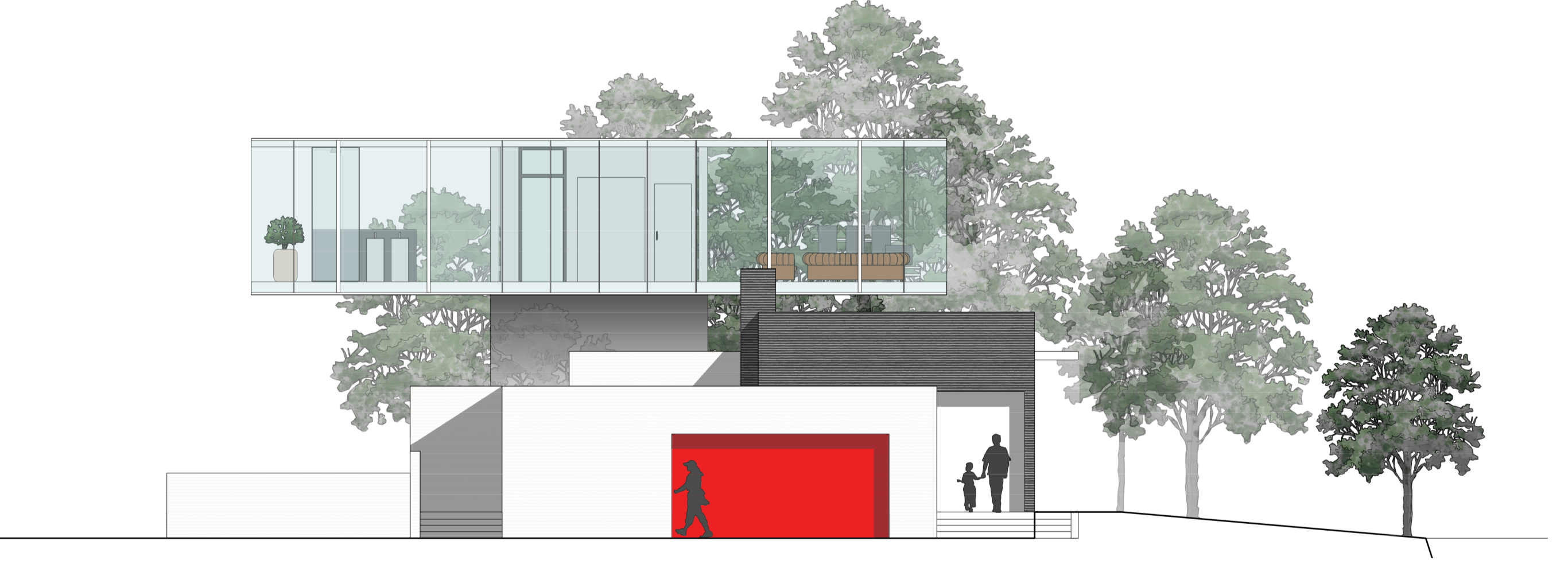
sfeer impressie



gevel beelden 1:100



noord-gevel



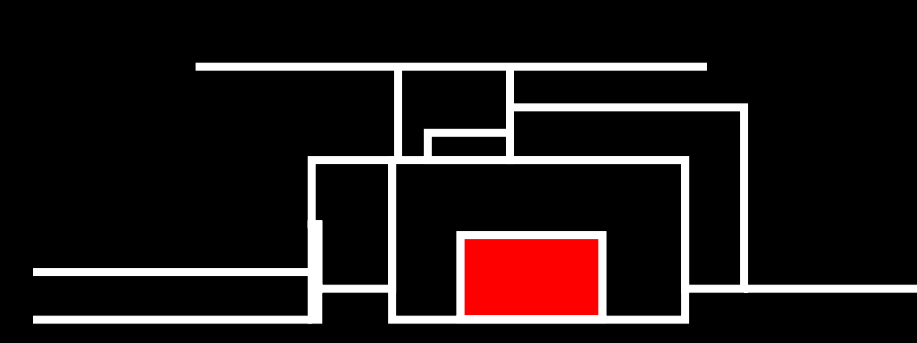
oost-gevel



zuid-gevel



west-gevel 1:100



situatie 1:500



- Legenda**
 1: woning
 2: beeldentuin
 3: moestuin

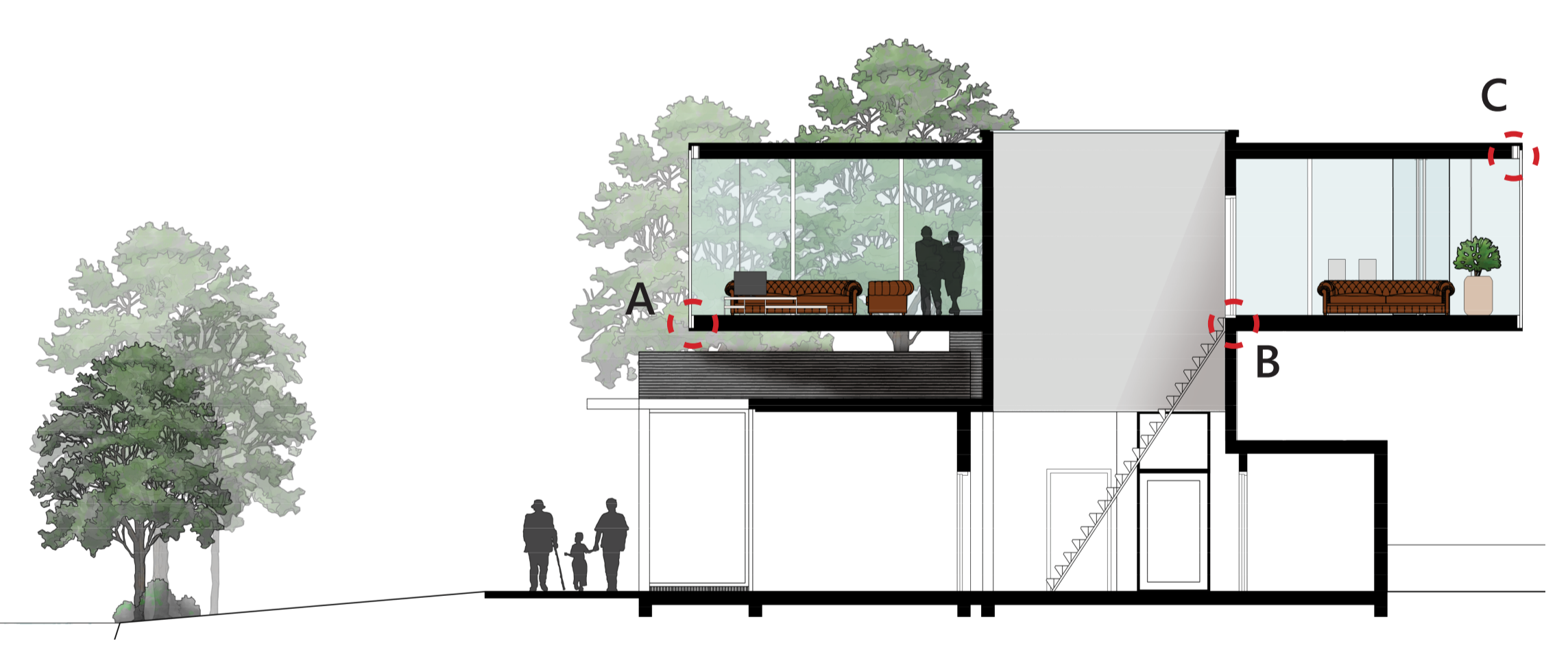
plattegrond 1:100



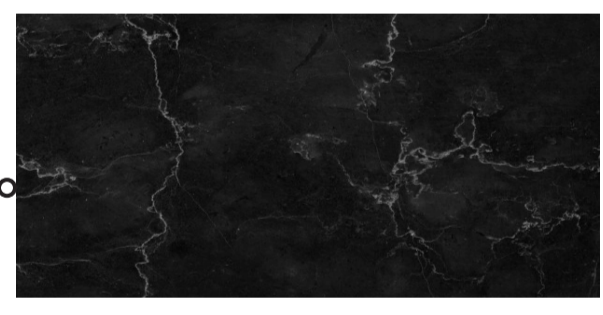
- materialisatie**
- 0
5
10
- Exterieur**
- glazen pui
 - aluminium rand afwerking
 - spiegellende aluminium cassettes
- Interieur**
- zwarte populier houten vloer afwerking
 - verchroomd aluminium hoek profiel
 - tbv plint afwerking
 - verchroomde metalen wand afwerking
 - geperforeerd metalen plafond afwerking
 - anthraciet beschilderde zichtbare draagconstructie
 - aluminium, keukenblad en afwerking
 - madrona-hout panelen, wand studie en hobby ruimte afwerking
- Legenda**
- 1: hal
 - 2: woonkamer
 - 3: keuken
 - 4: slaapkamer
 - 5: hobby ruimte
 - 6: stilte ruimte



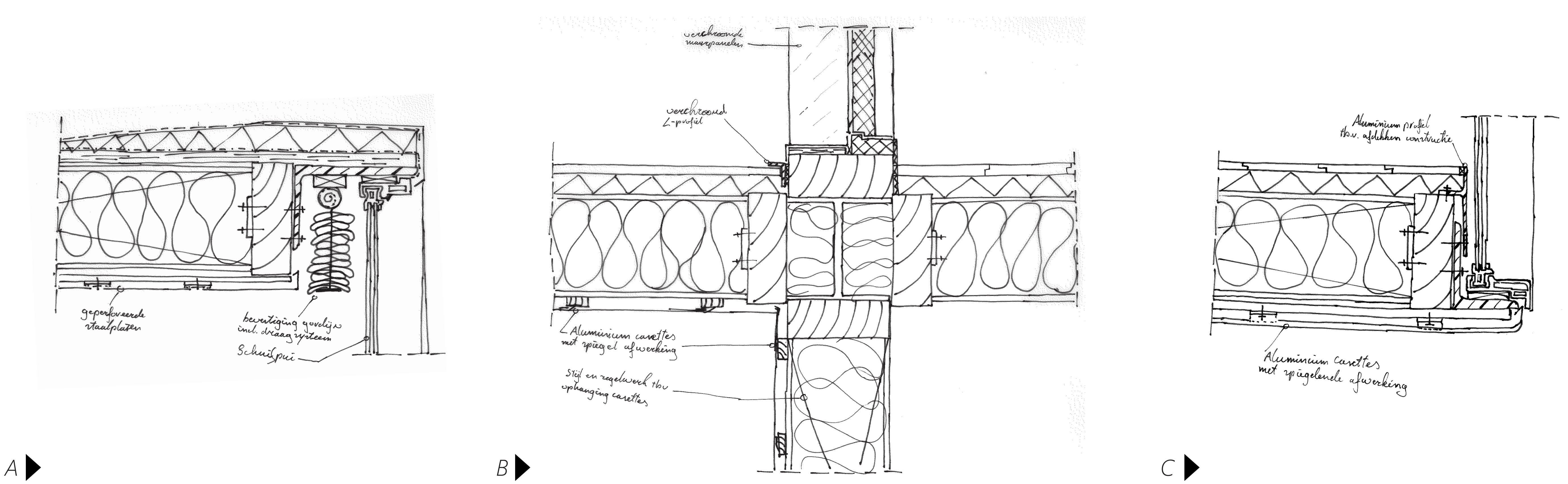
doorsnede 1:100



- meubilair**
- donkerbruin, chesterfield sofa en zitbank
 - zwart, marmer ovalen koffietafel
 - wit - grijs, marmer tv-meubel
 - grijze verduisterings gordijnen
 - pruimenboom-hout, eettafel
- Interieur**
- zwart, staal met stoffen zittingen en gevoerde eetstoelen
 - donker eiken, odie ladekast
 - terracotta, handgevormde plantenpot
 - verchroomd, metalen waszuil
 - waterval douche
 - scheele's groen, hoogpolig vloerkleed



Details 1:5



A

B

C