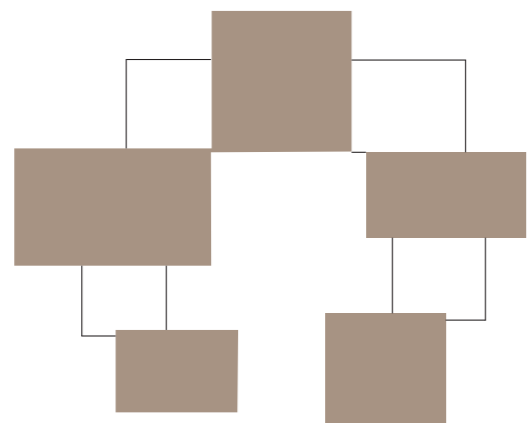


BRIENENOORD

A SPACE TO SHARE

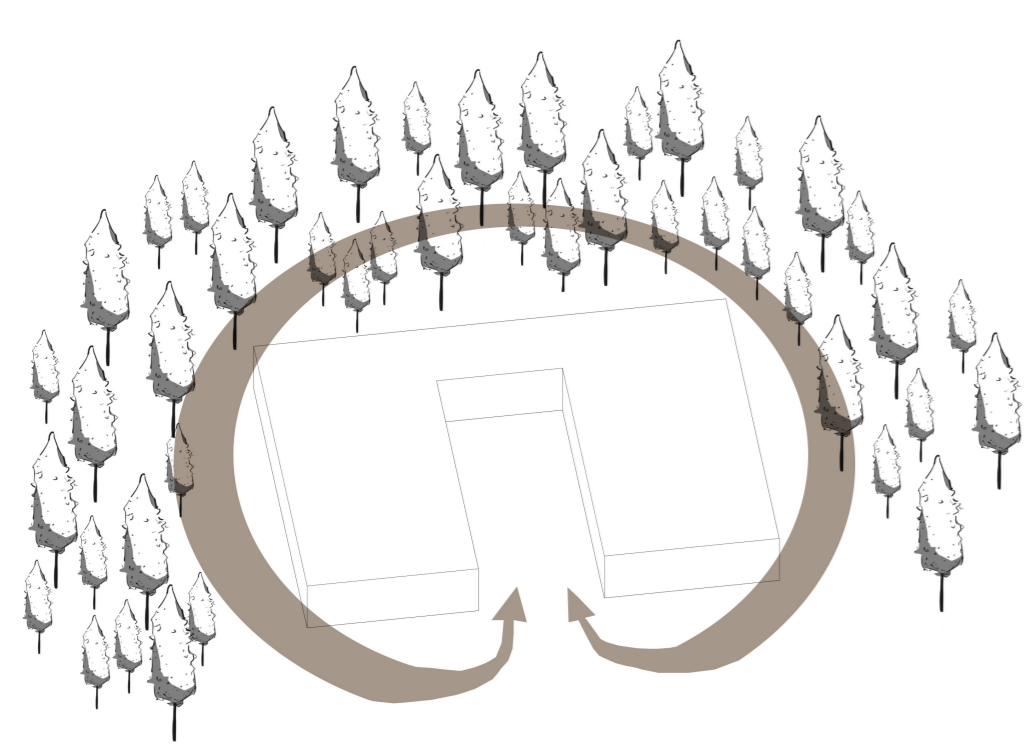
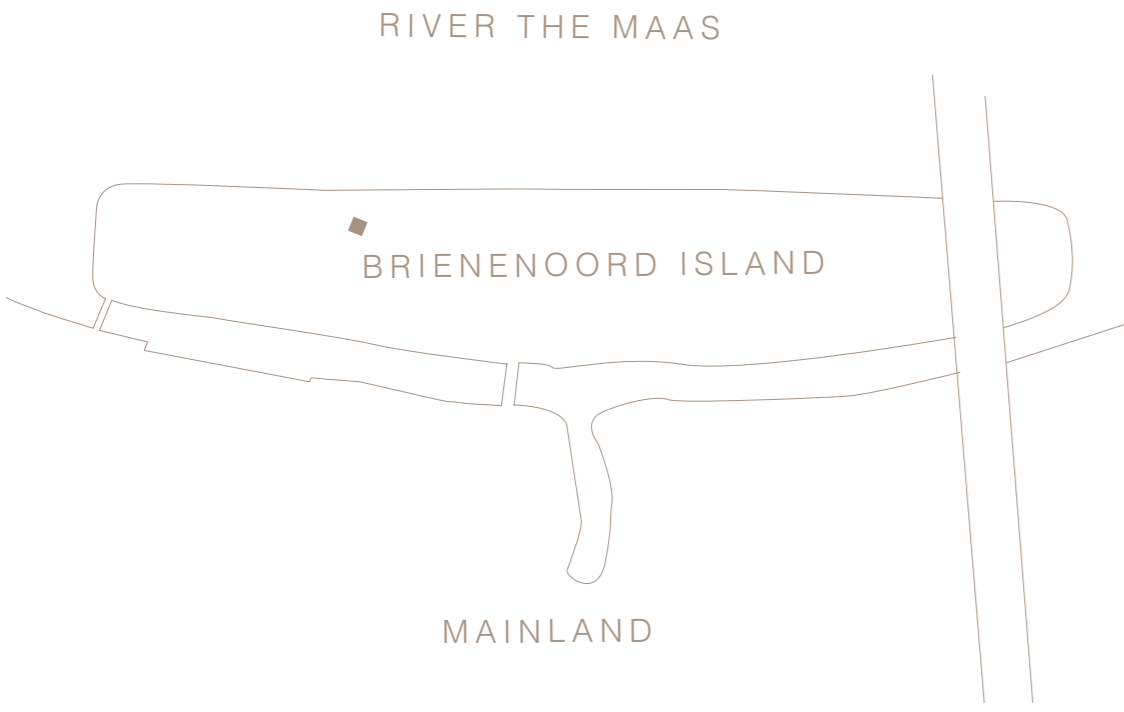
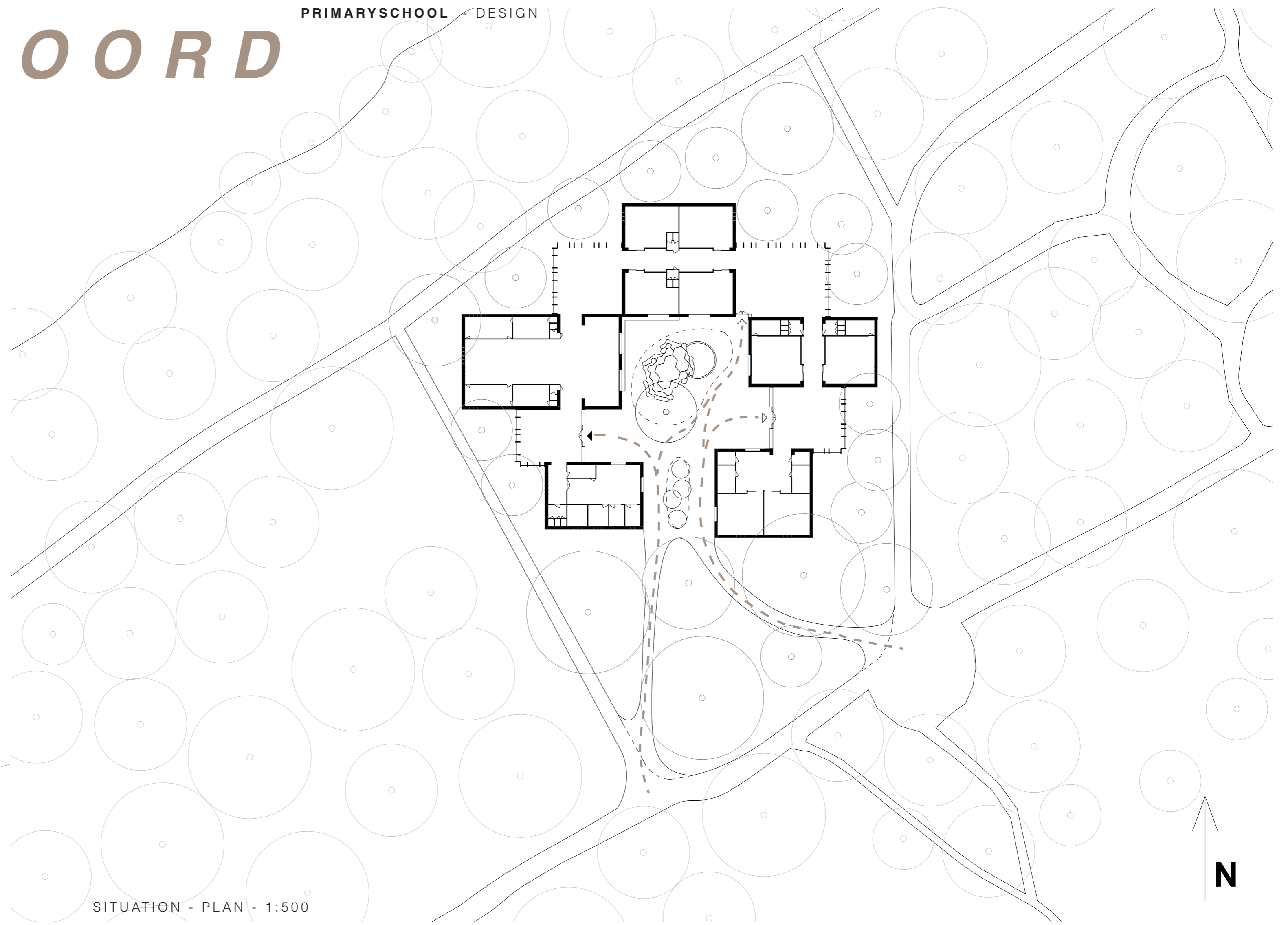
PRIMARYSCHOOL DESIGN



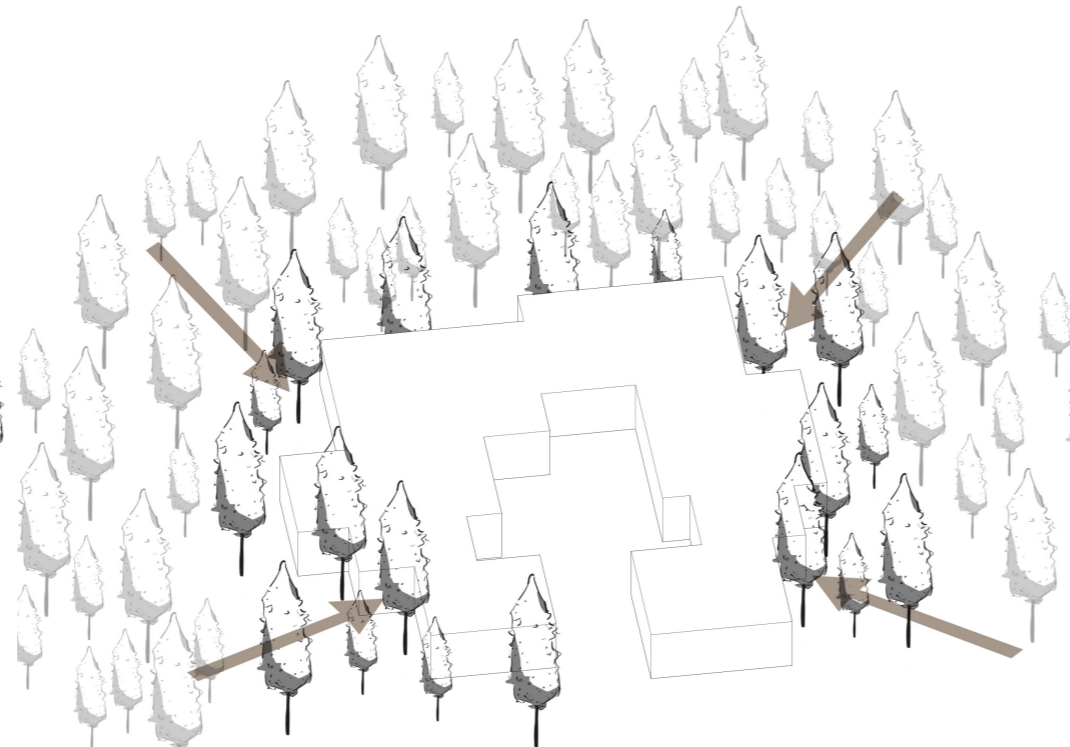
Brienenoord is located on the Maas, you have a beautiful view of Rotterdam and the island is rich in various sort of plants and trees. This location is only known by people who rent an allotment garden or the people who work at the workplace. I think that the island has much more to offer.

I designed a school where children are disconnected from the big city and where the child can those the moments of connecting and disconnecting.

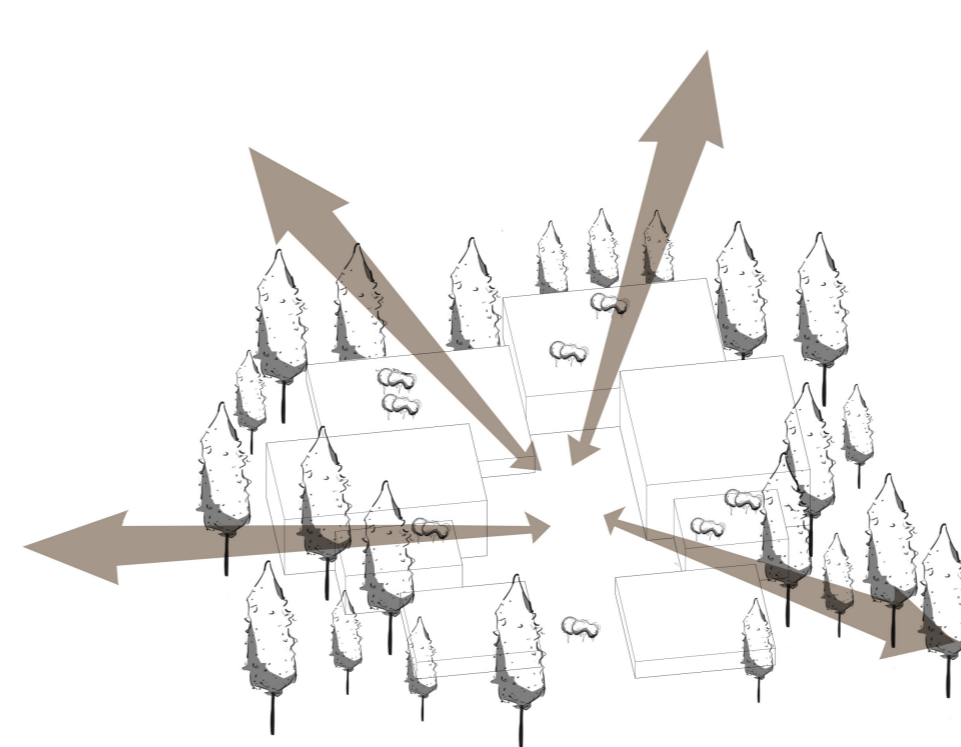
I think that this will improve the joy of learning.



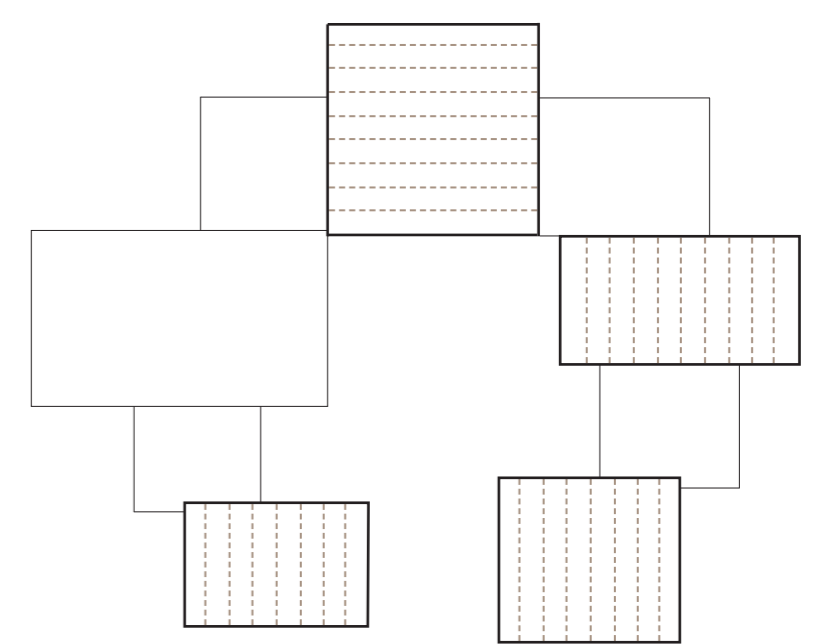
PROTECTIVE LAYER



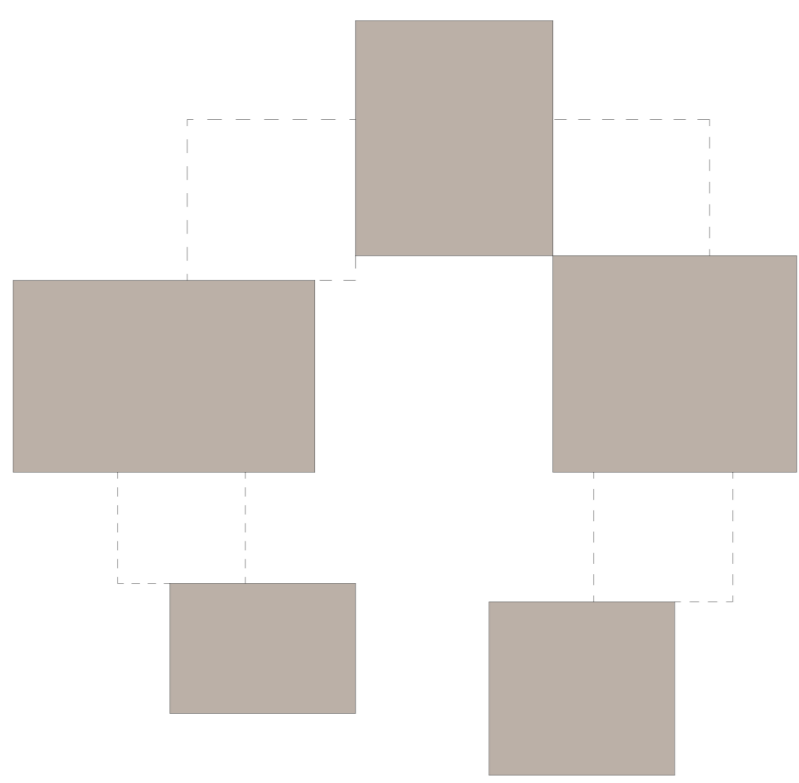
EMBEDDED IN THE ENVIRONMENT



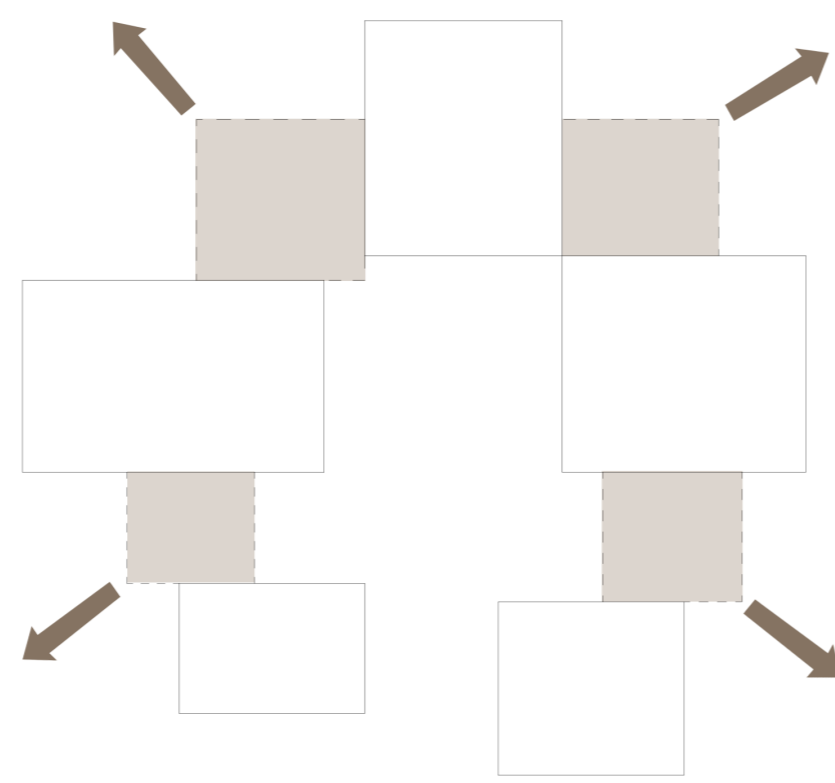
CONNECTION WITH SURROUNDING



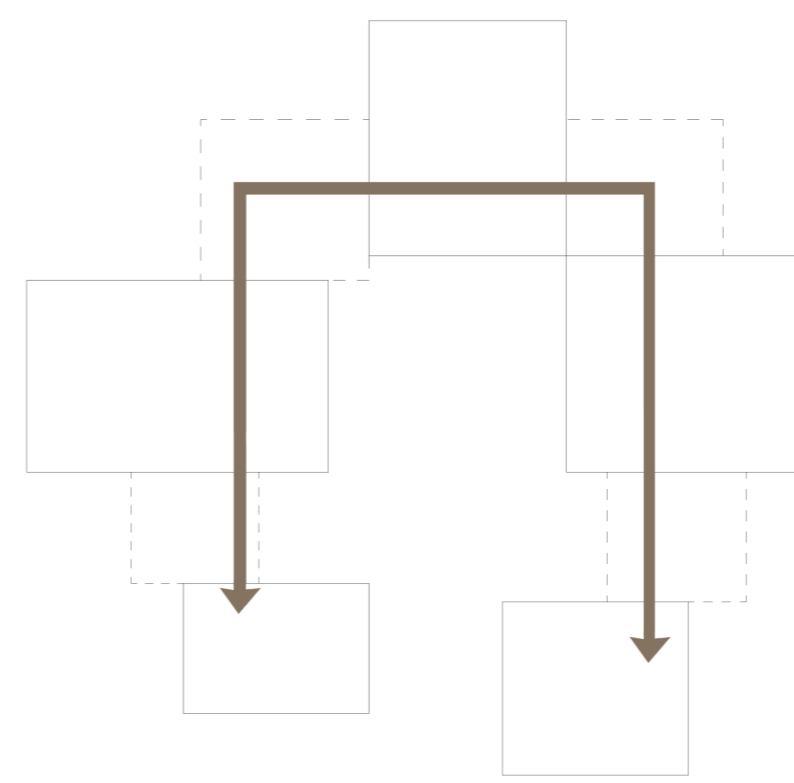
STRUCTURE GROUND FLOOR



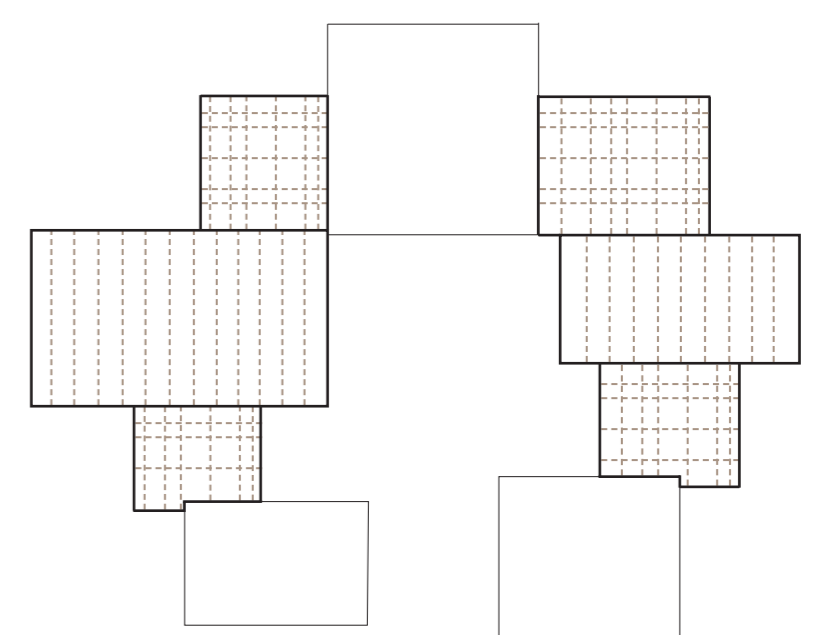
CREATING DEPARTMENTS



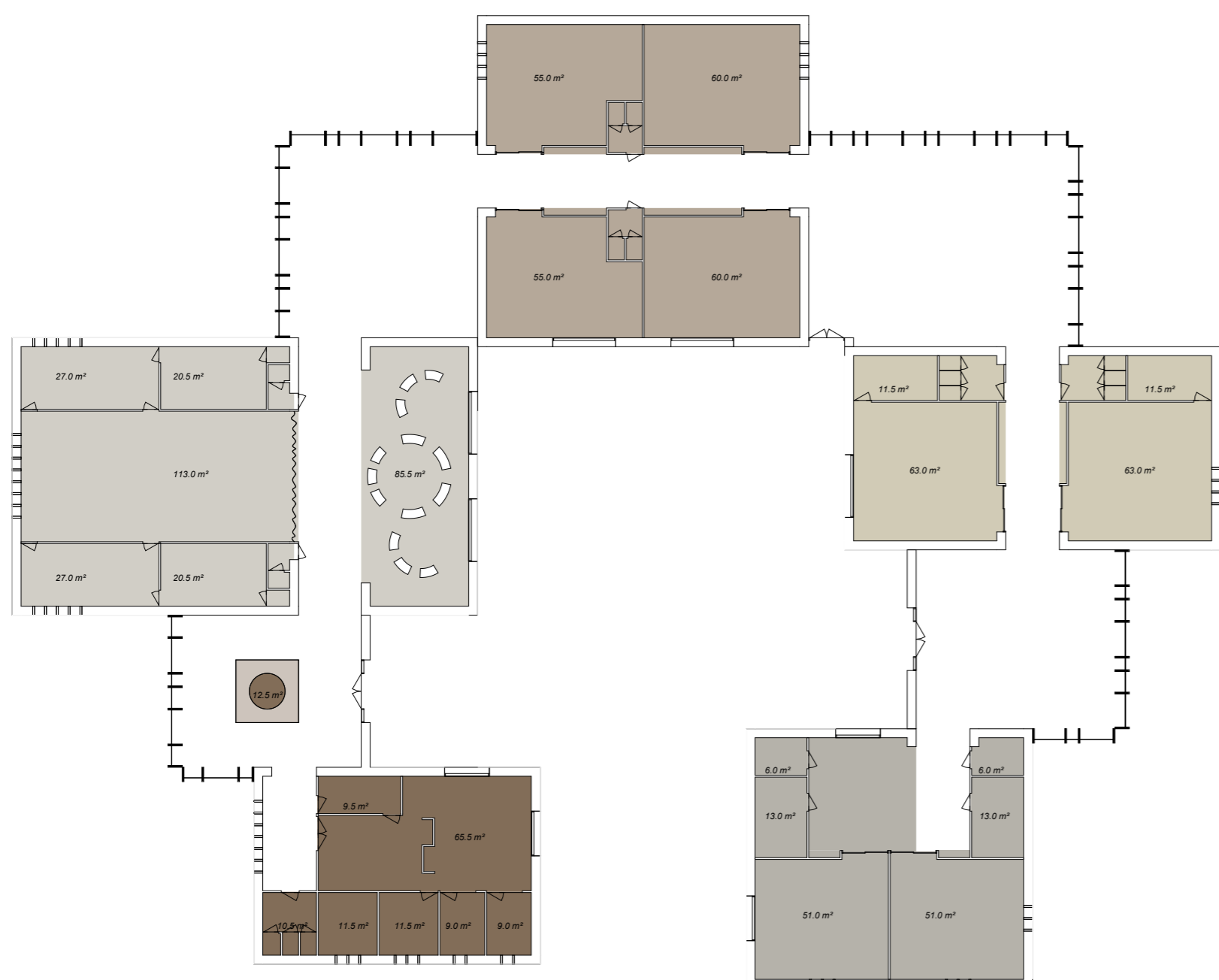
OPEN AND CLOSED SPACES



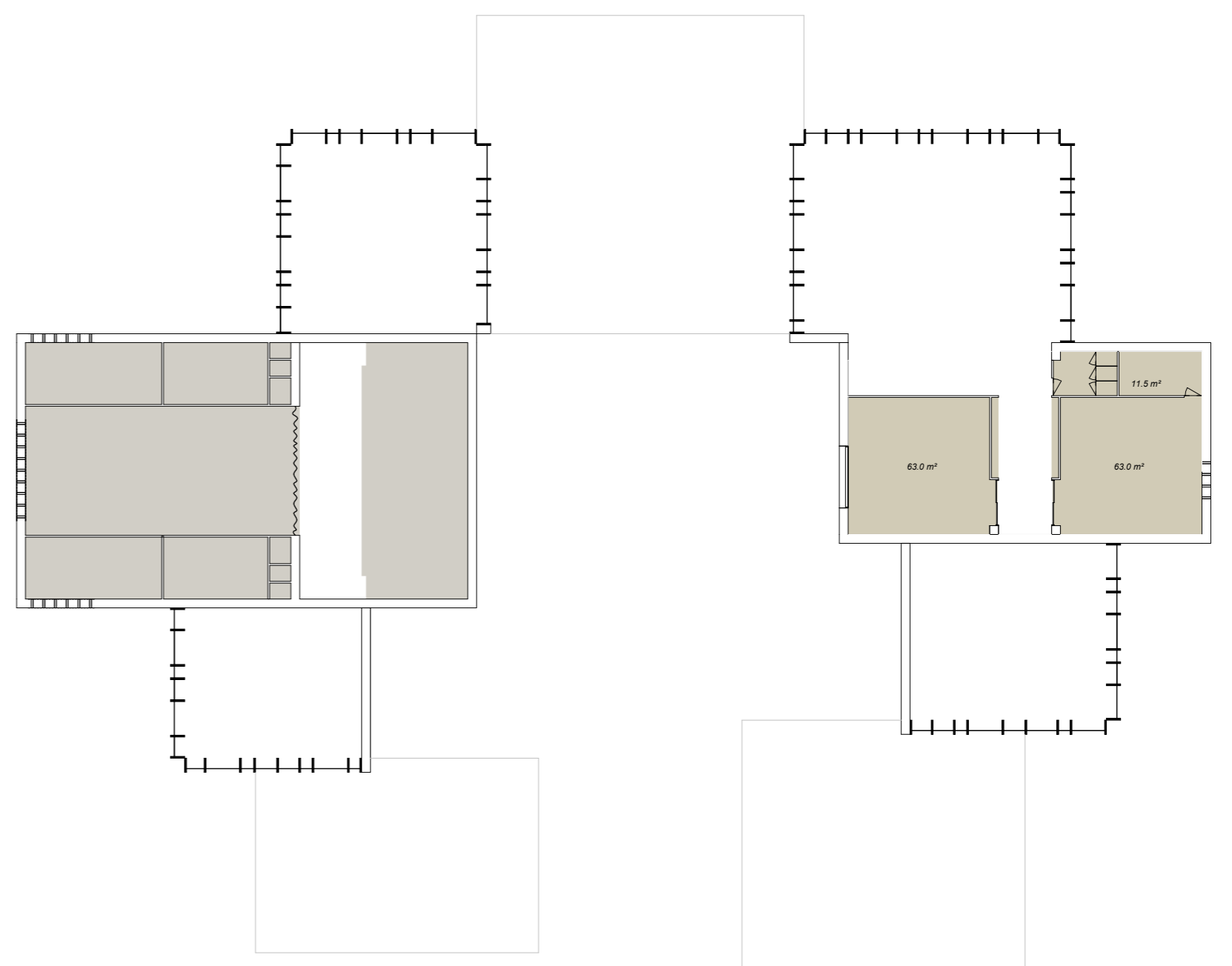
SHARED SPACE



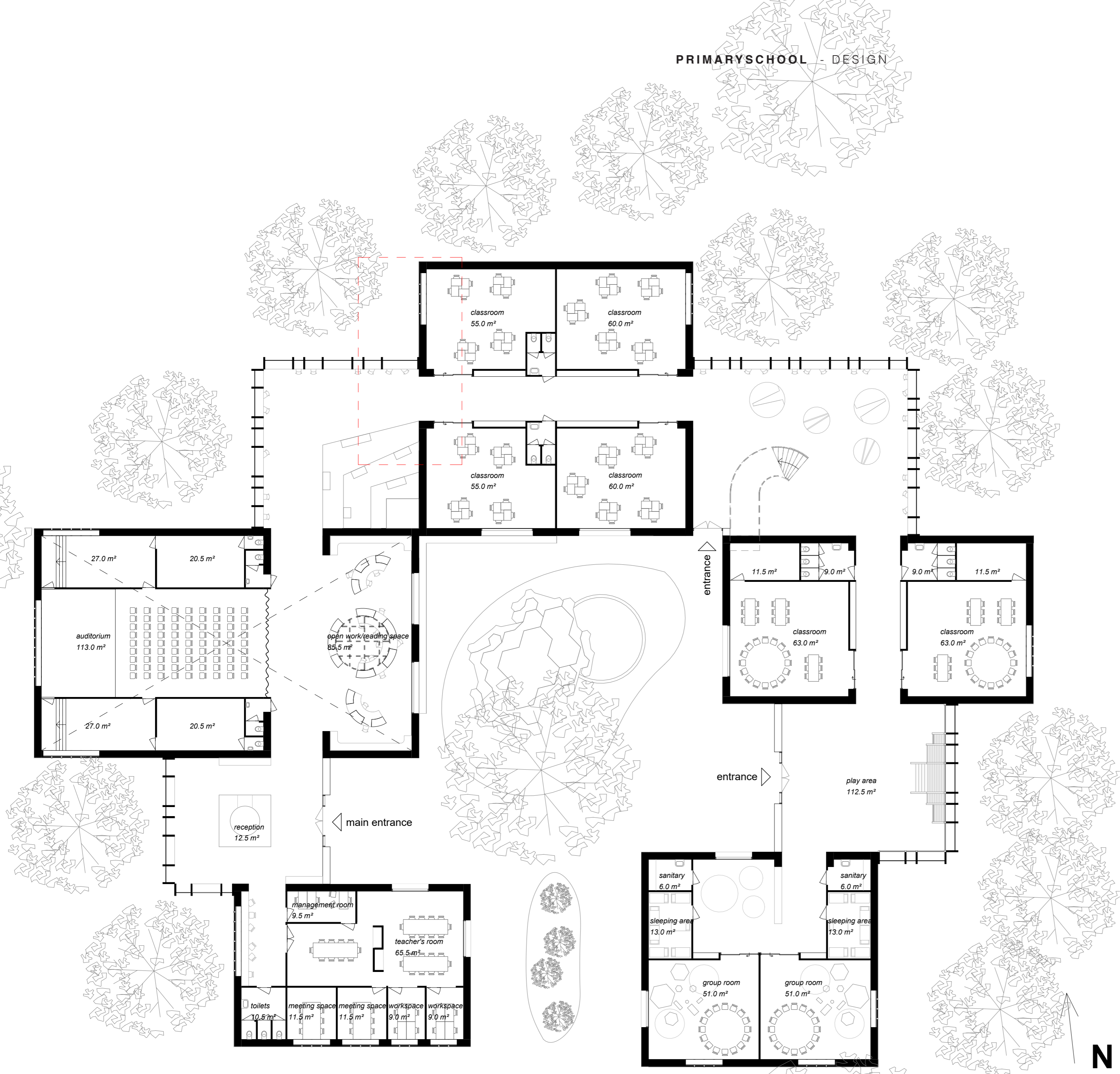
STRUCTURE FIRST FLOOR



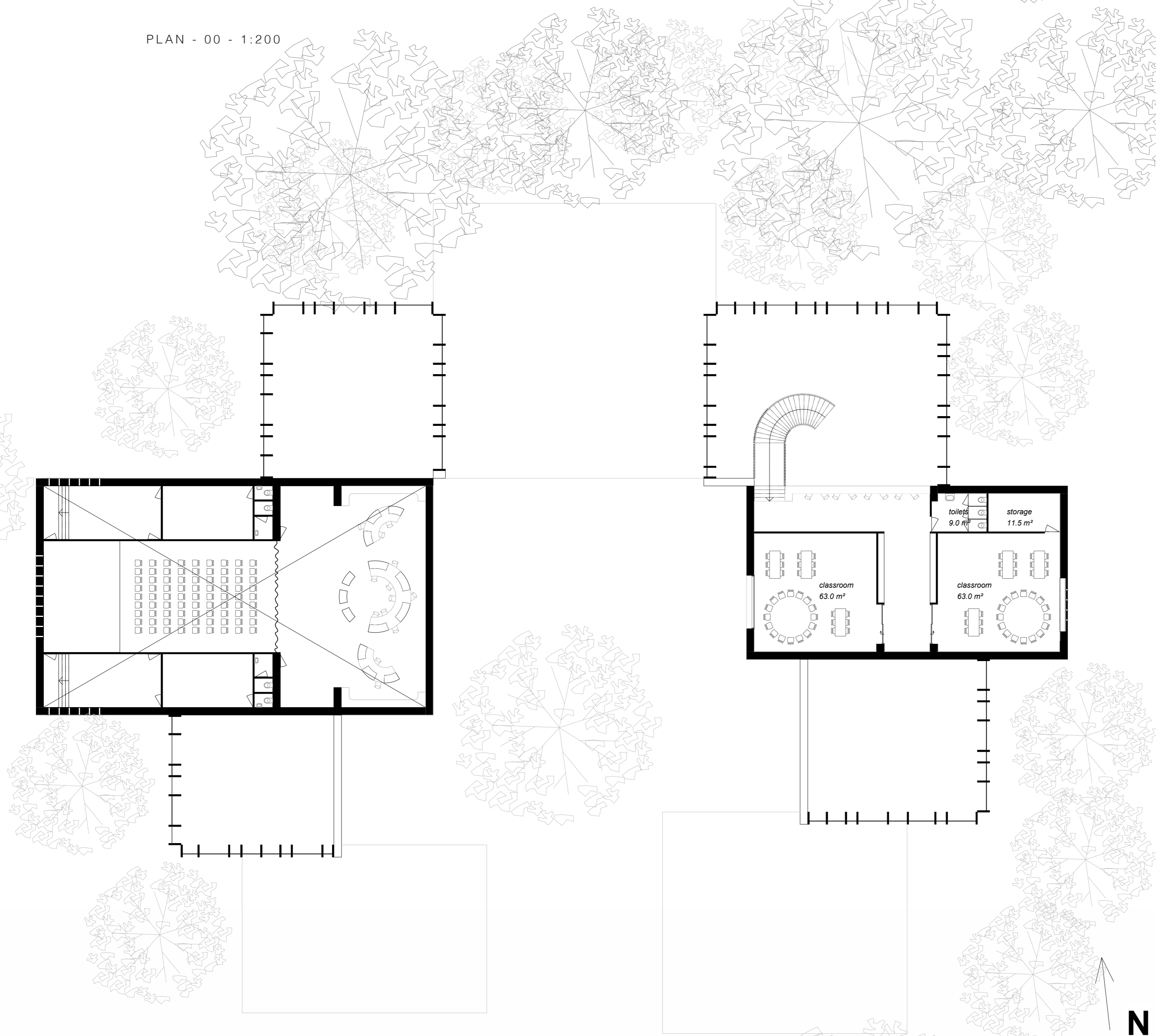
SCHEME - 00



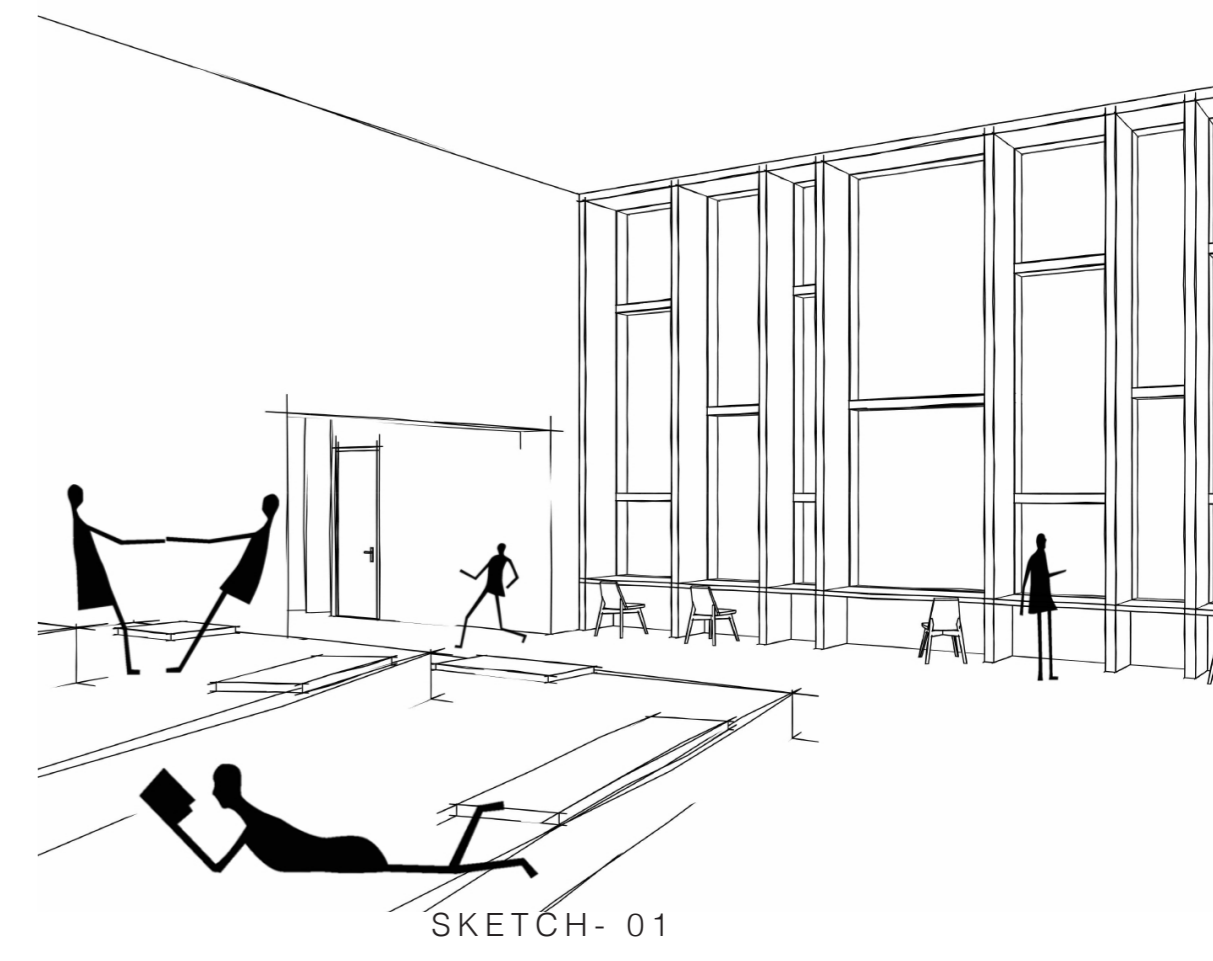
SCHEME - 01



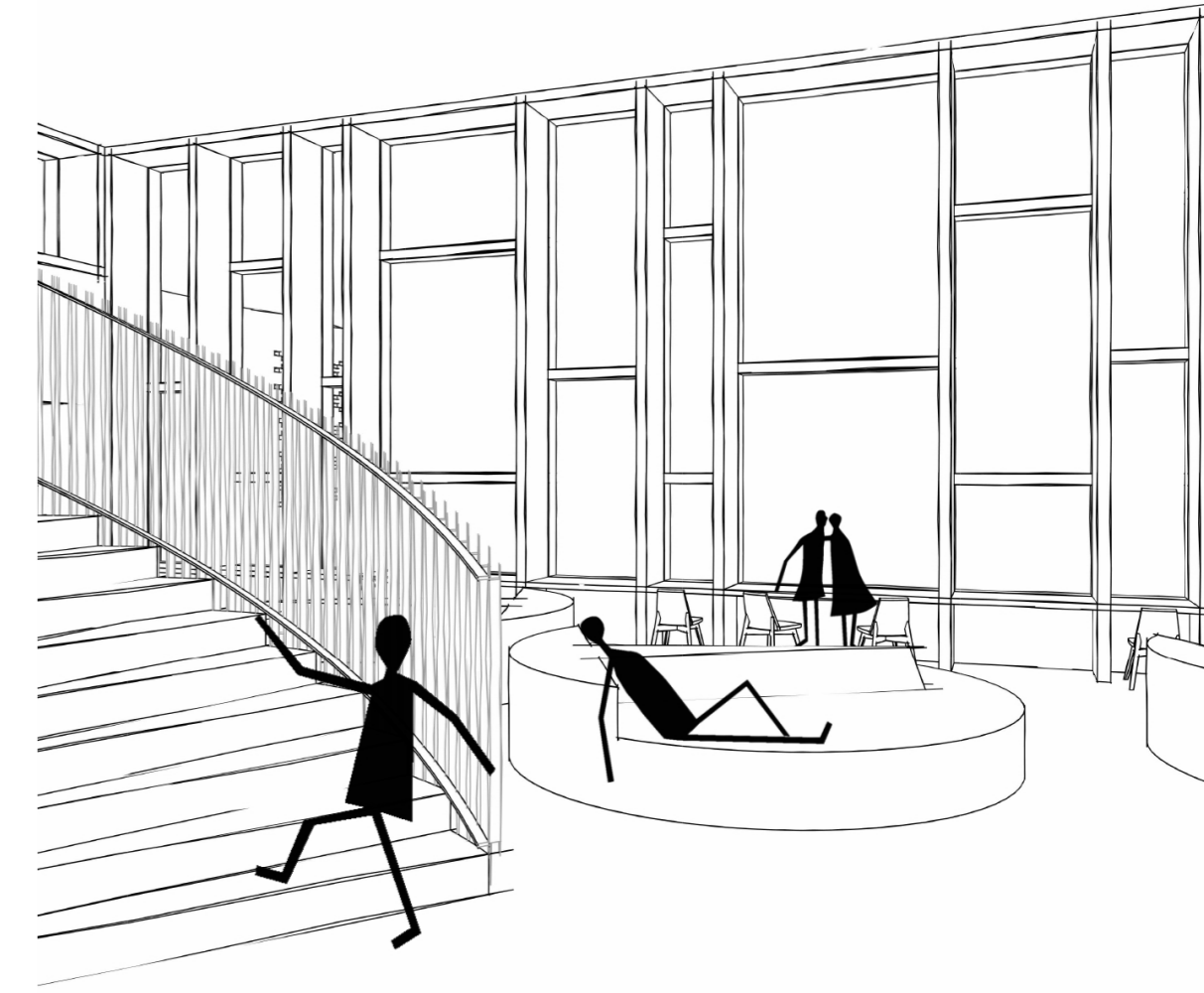
PLAN - 00 - 1:200



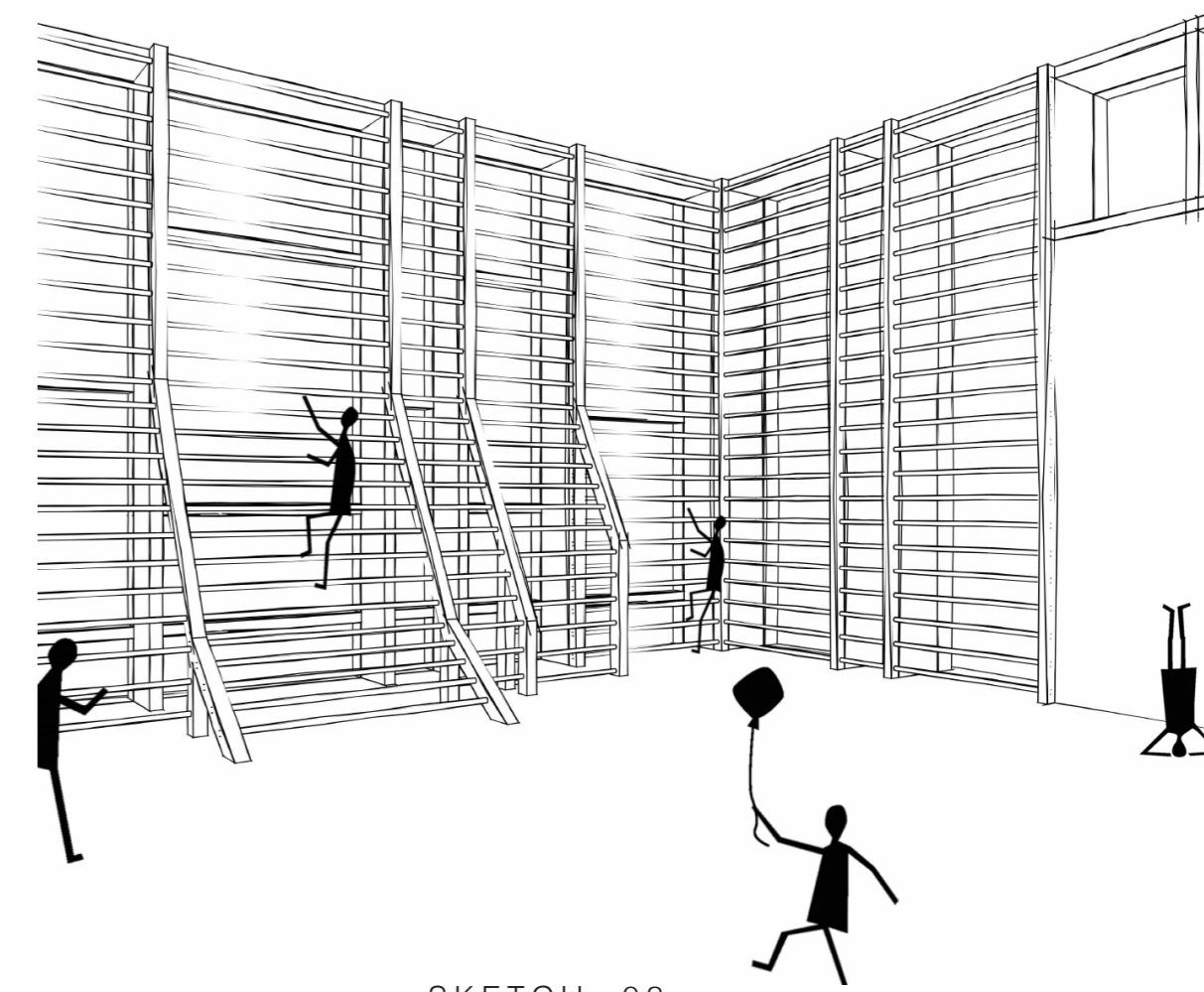
PLAN - 01 - 1:200



SKETCH- 01



SKETCH- 02

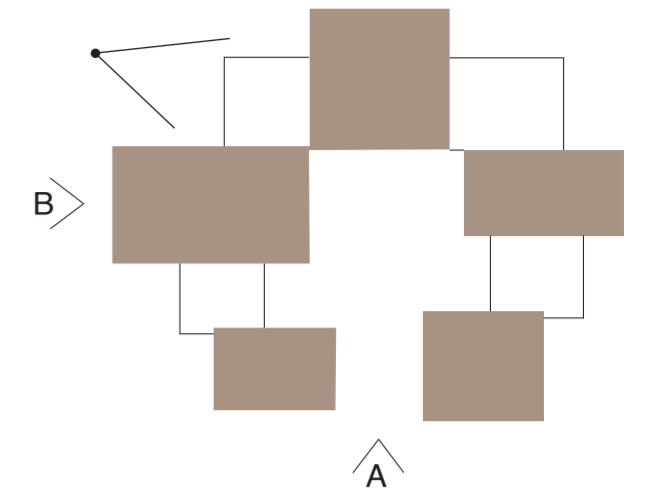
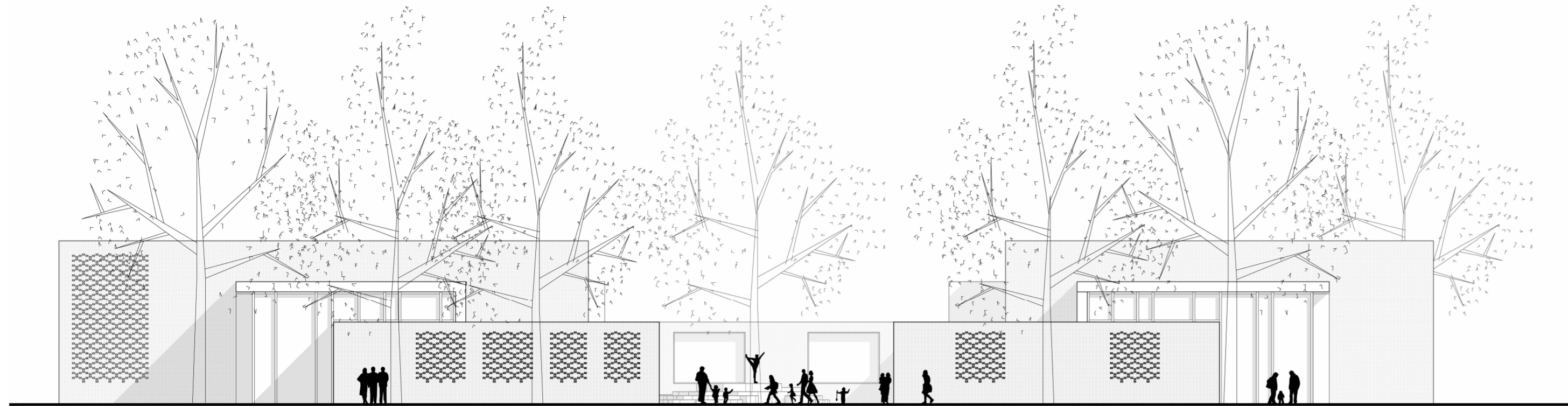


SKETCH- 03

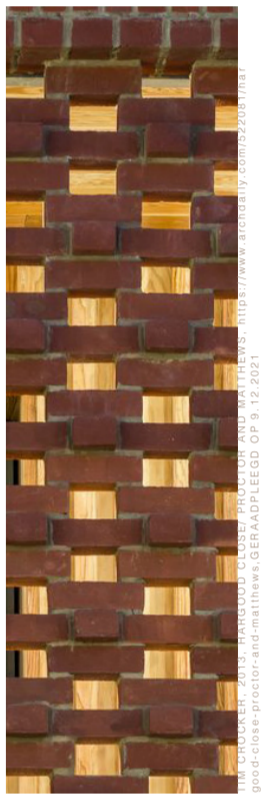
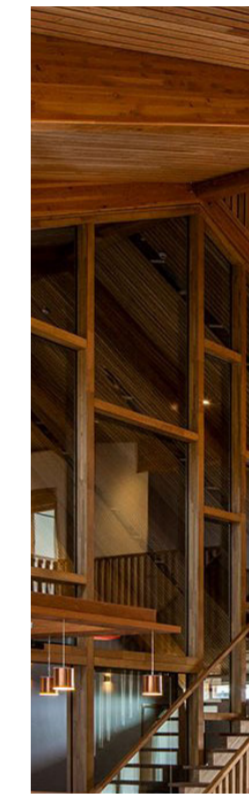
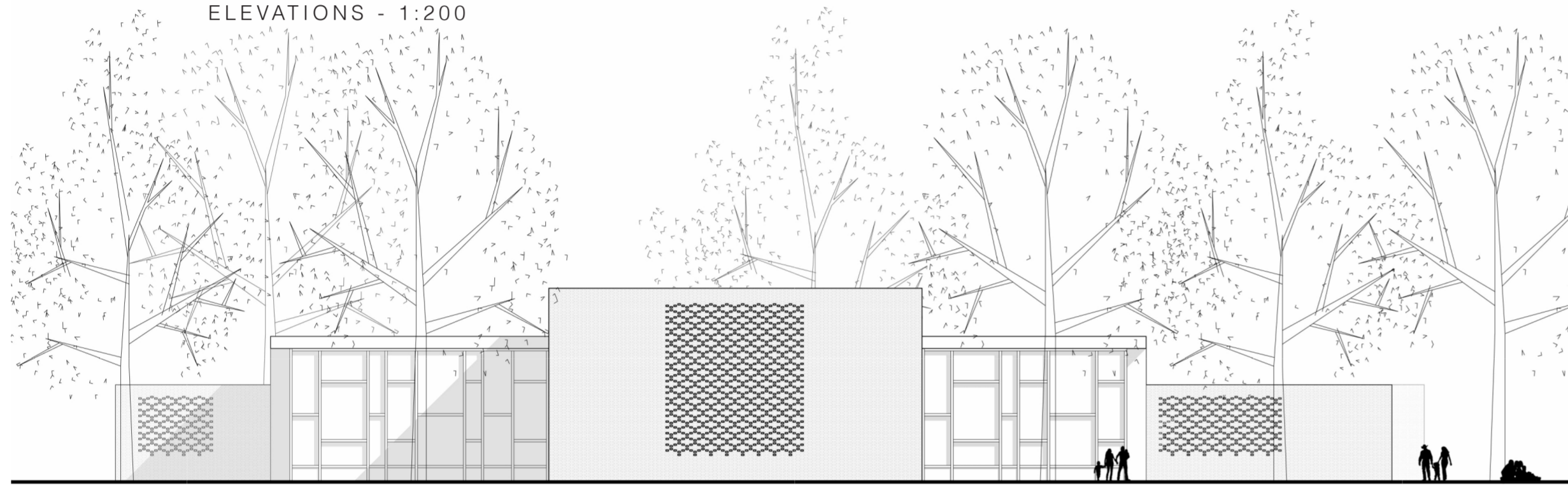


SKETCH- 04

PRIMARY SCHOOL - DESIGN

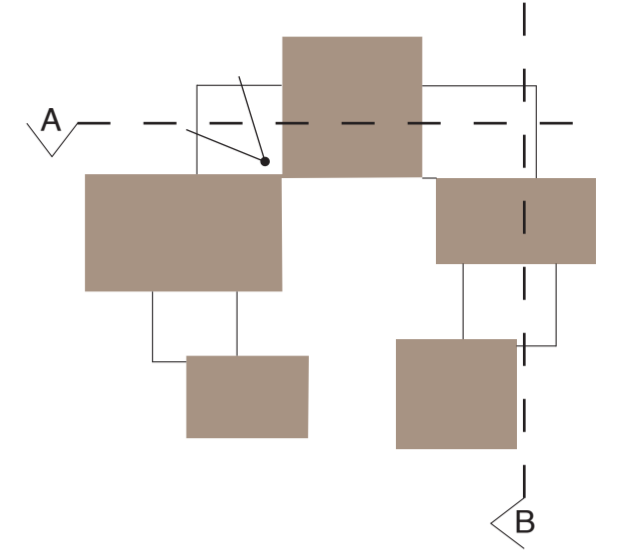
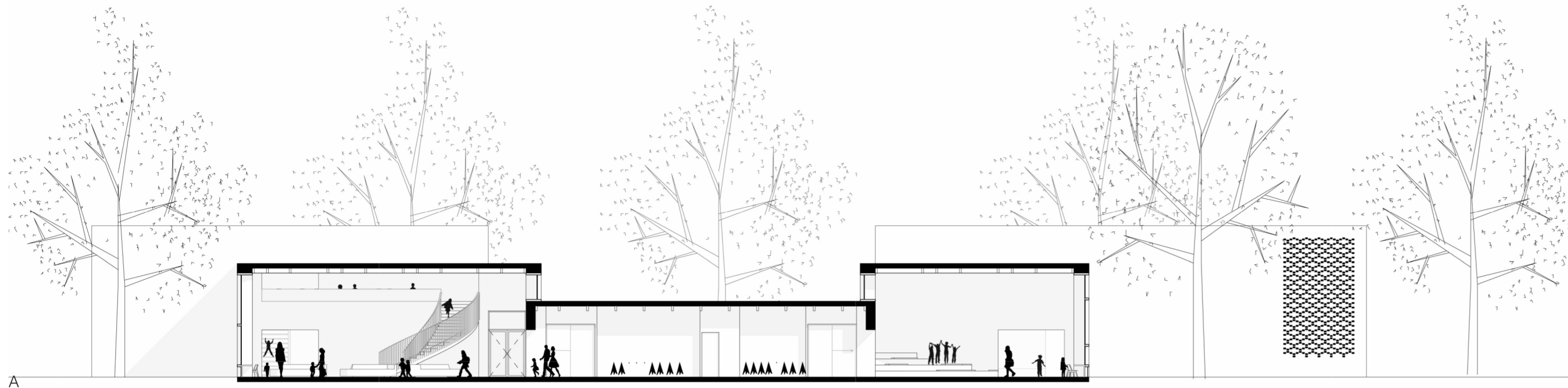


ELEVATIONS - 1:200

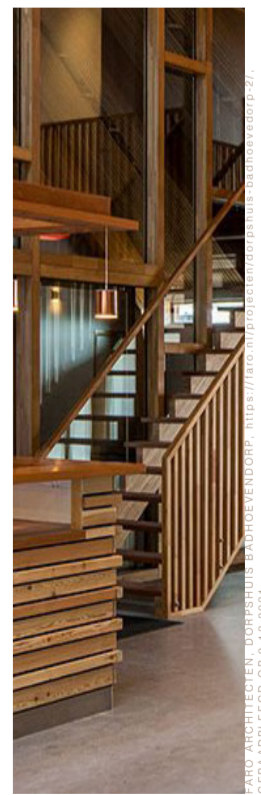
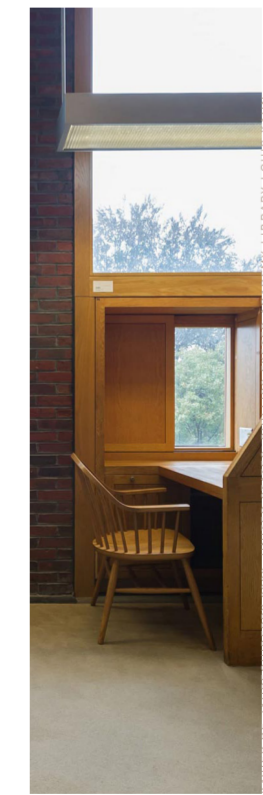
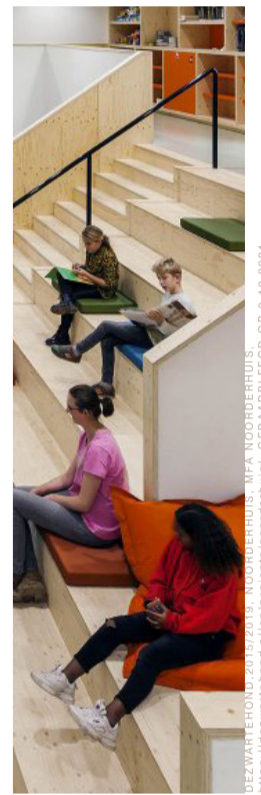
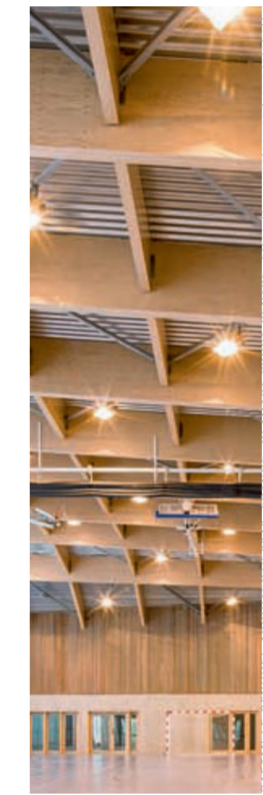
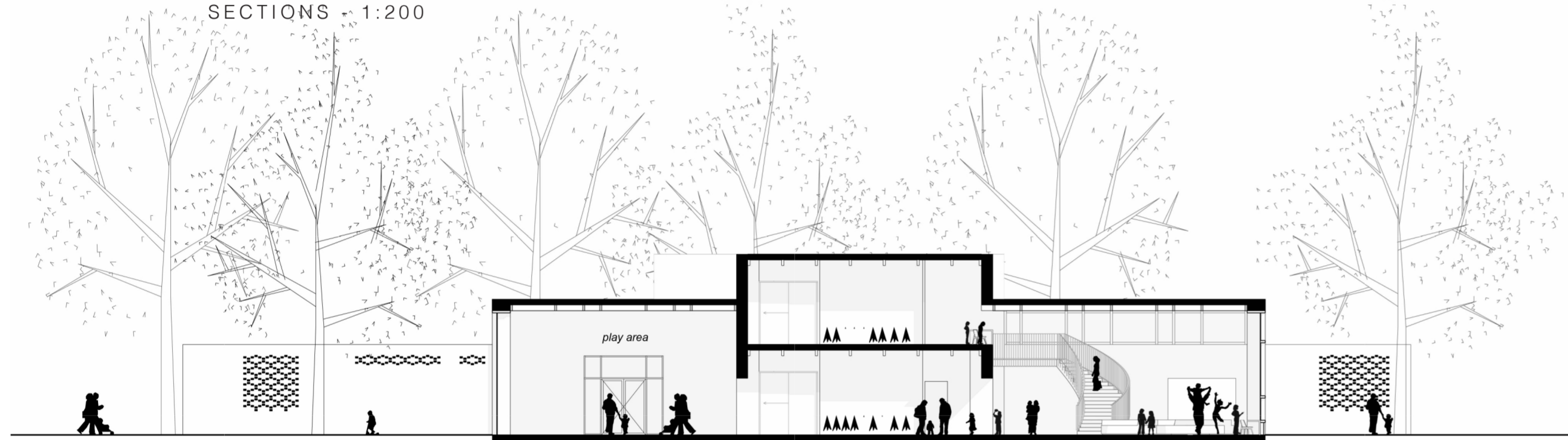


MATERIAL - EXTERIOR

PRIMARY SCHOOL - DESIGN



SECTIONS - 1:200



MATERIAL - INTERIOR