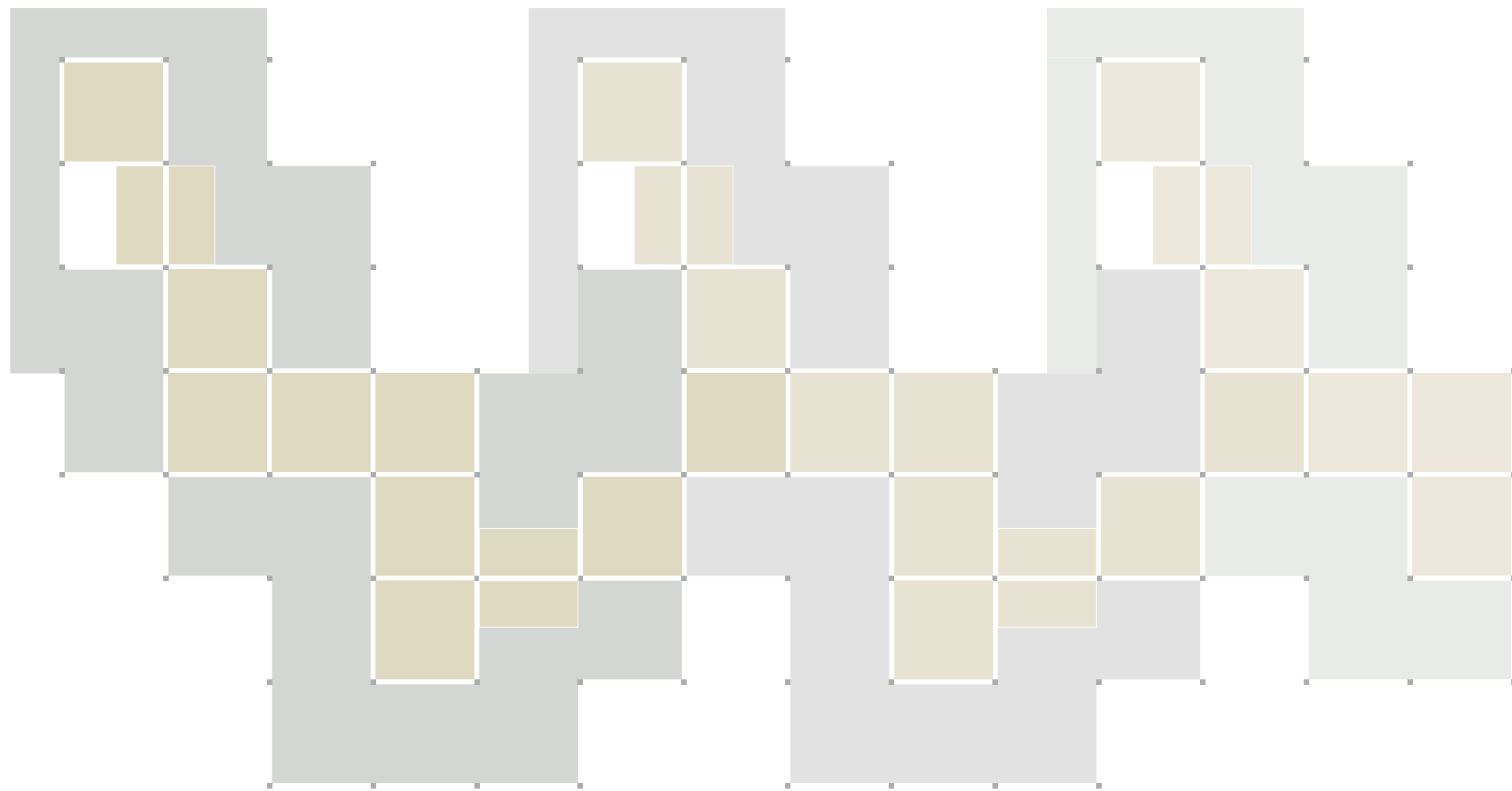


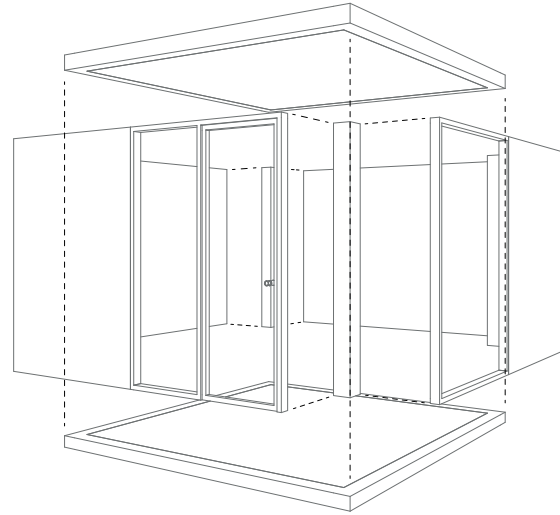
GRAND HOTEL HOLLAND

“Een duurzaam budget hostel voor de locals van Hoek van Holland”

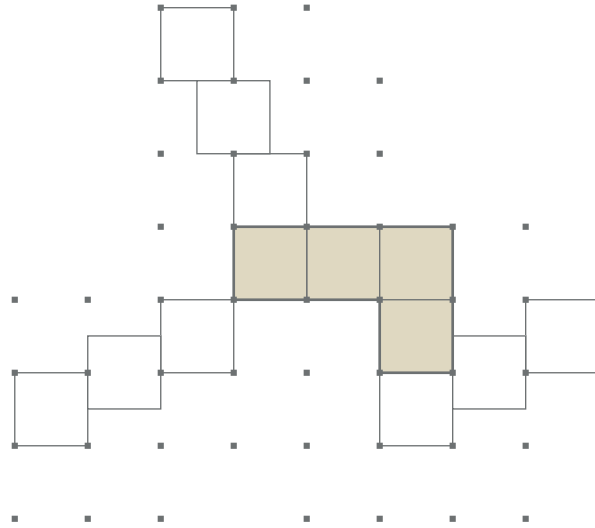


Uitgangspunten en richtlijnen

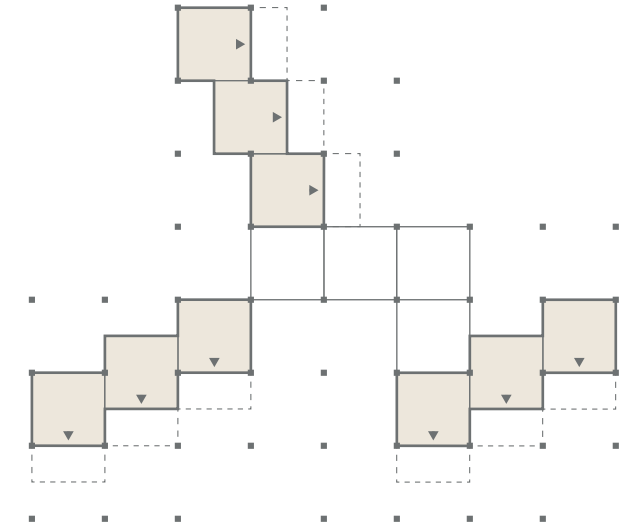
1. Modulair systeem/ houtbouw



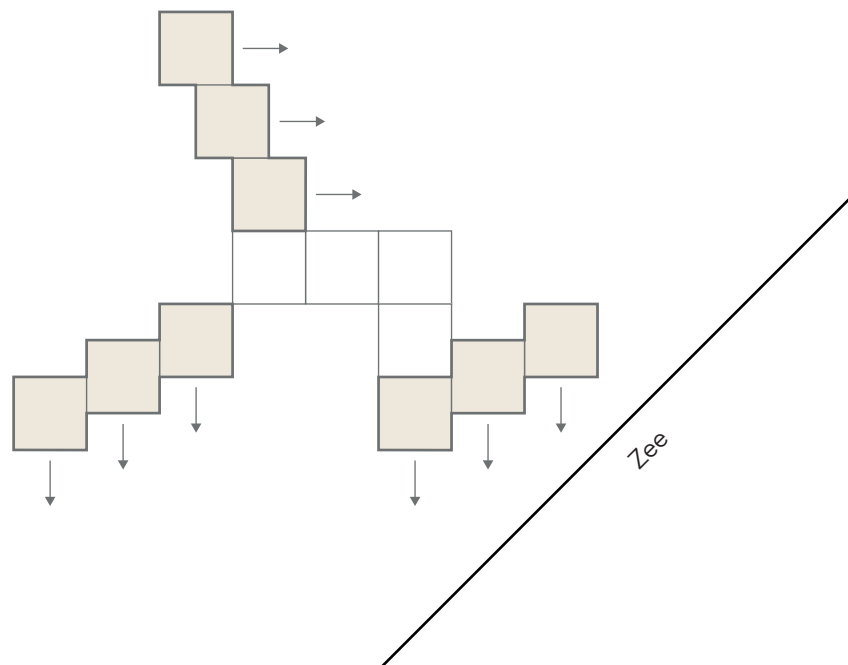
2. Middenkern waar de kamers aan geschakeld zitten



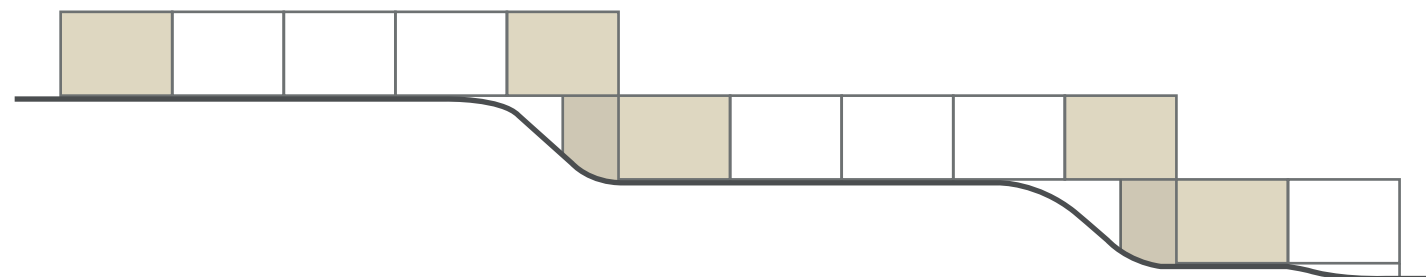
3. Modules verspringen t.o.z. van elkaar voor privacy



4. Alle kamers hebben uitzicht op zee



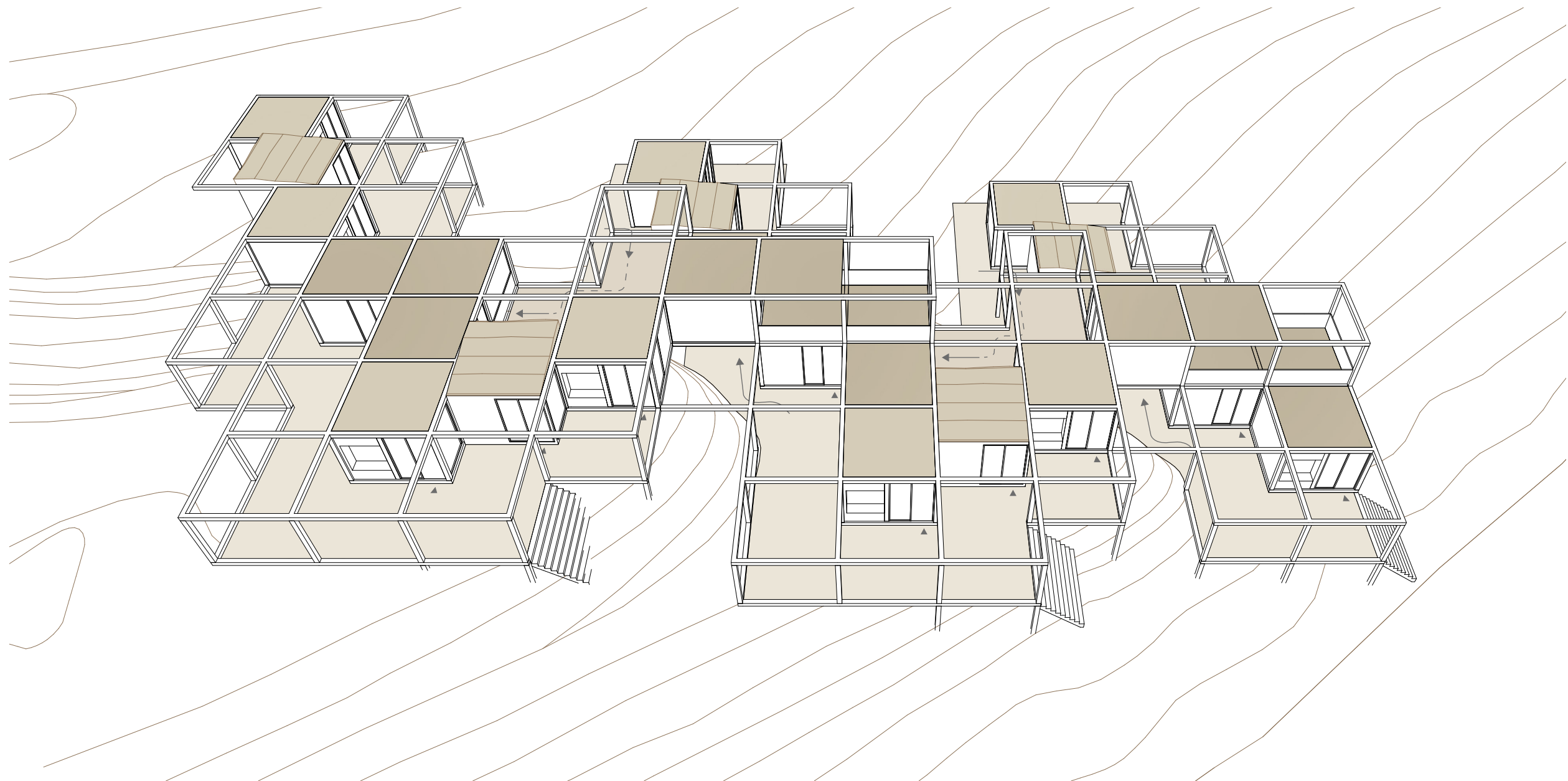
5. 1-laags gebouw.
Verspringt steeds met 1 verdieping



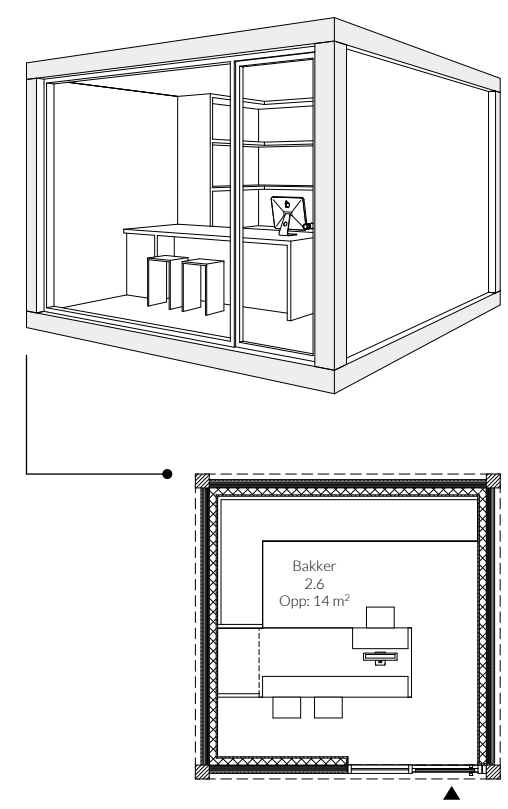
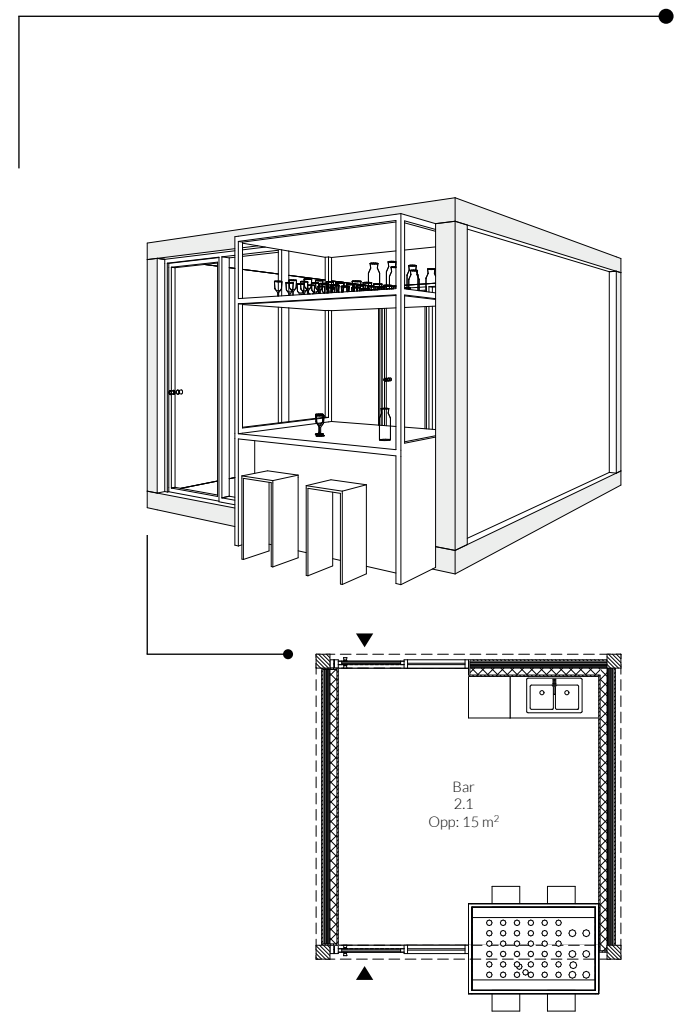
6. Natuurlijke routing, via de heuvel kom je op elke verdieping

Concept diagram

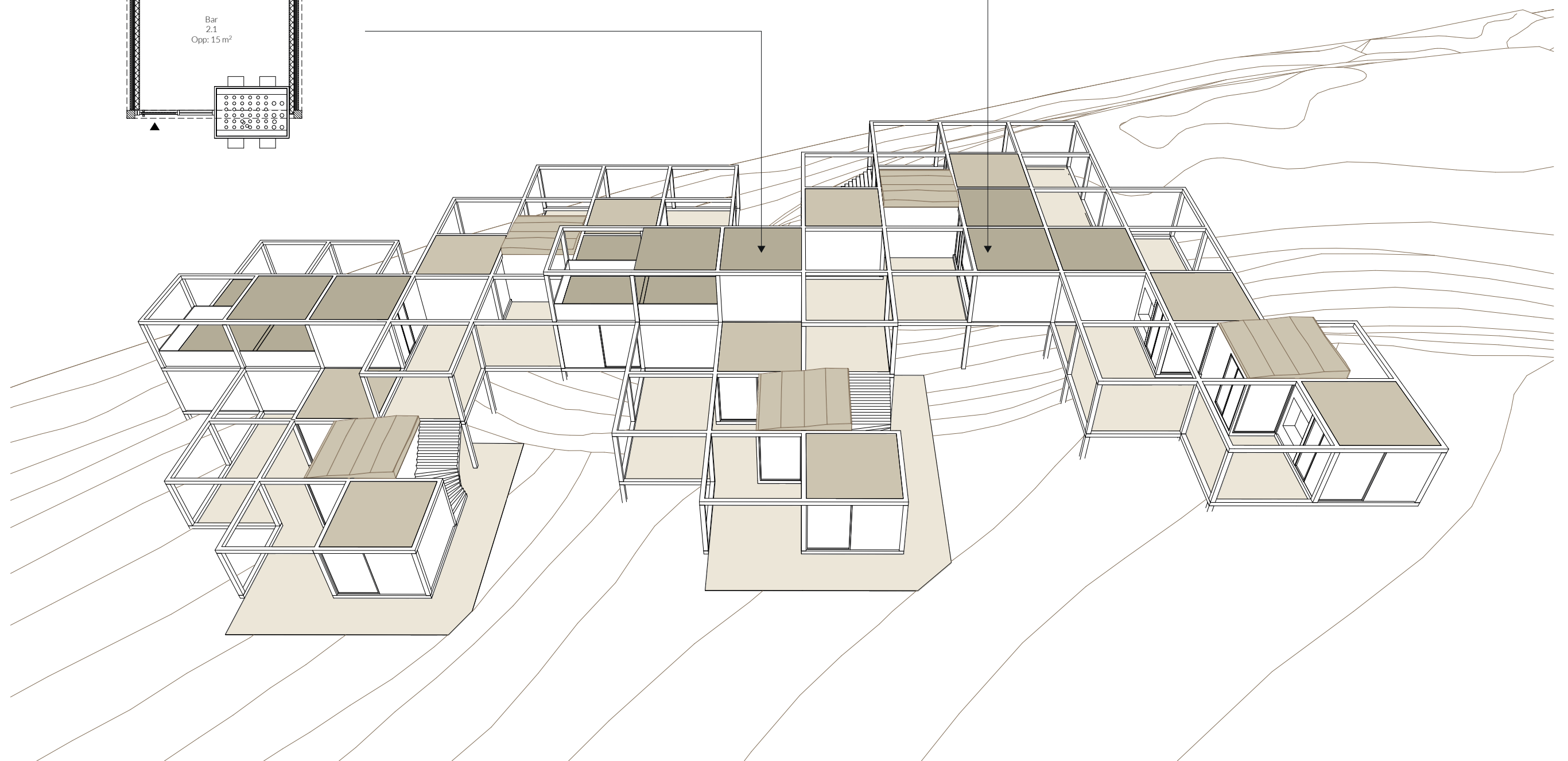
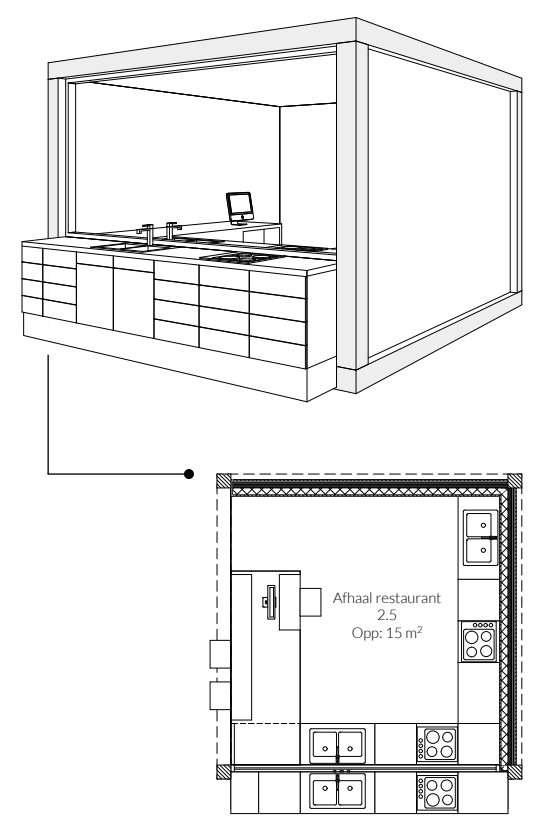
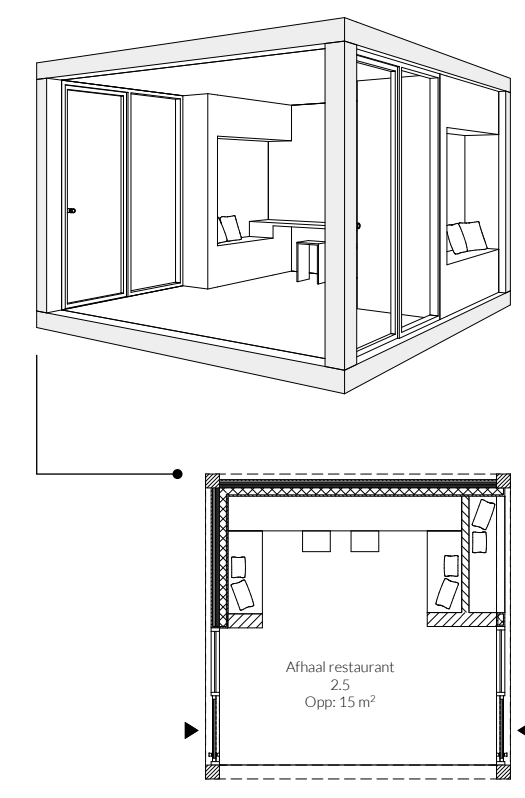
- Landschap
- 6x kamers (voorkant)
- 11x Gemeenschappelijke voorzieningen (middenkern)
- 9x kamers (achterkant)
- 3x Terras (voorkant)
- 3x Terras (achterkant)
- 2x Terras (middenkern)
- Constructie (invulbaar)



Programma van eisen

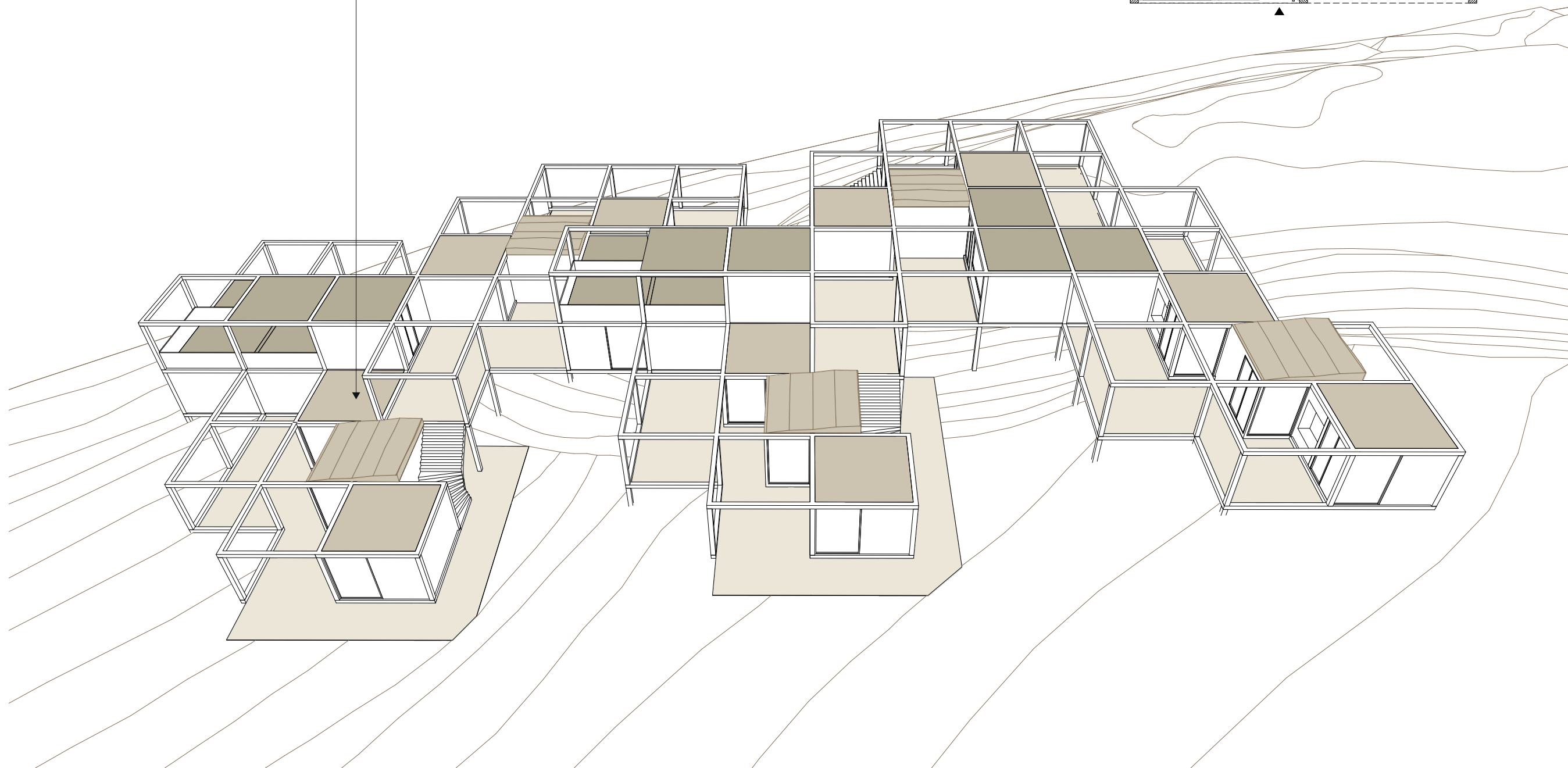
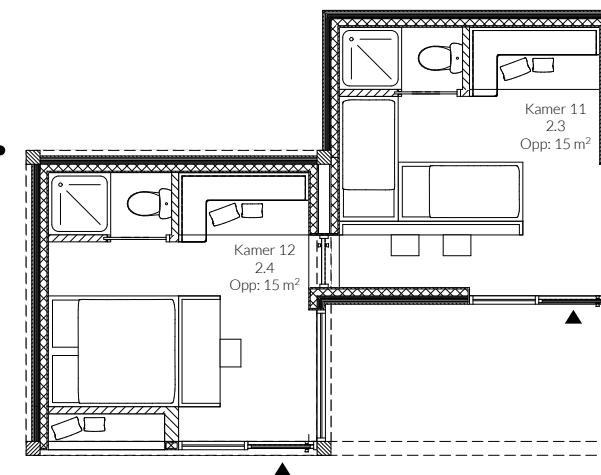
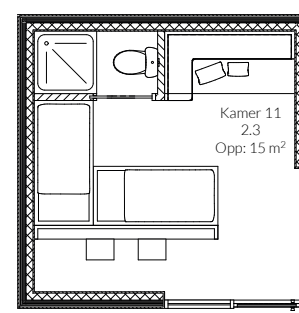
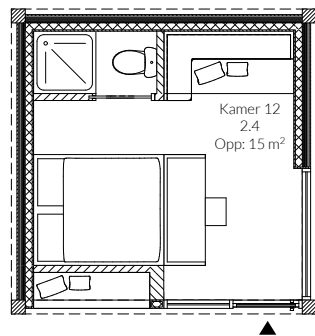
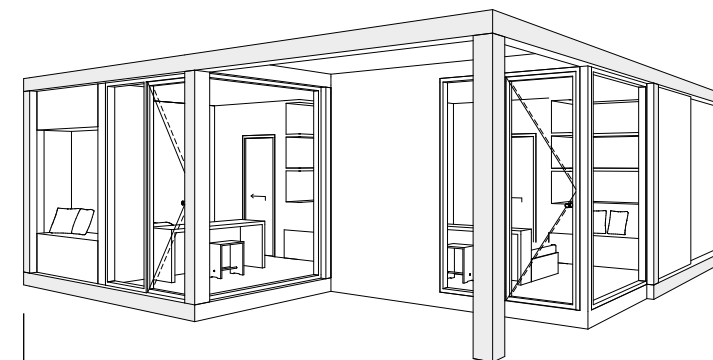
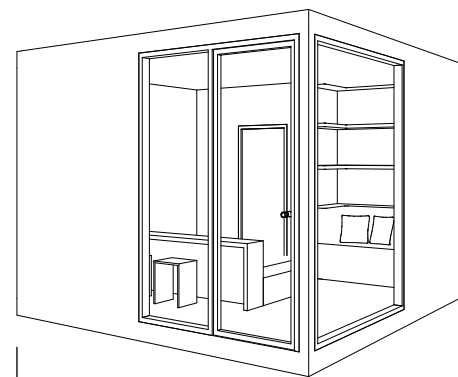
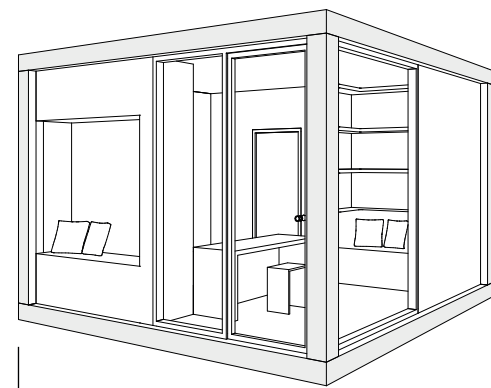


Voorzieningen 2e



Programma van eisen

Type kamers



Visual kamers



Visual terras

