

HIDDEN WATERS

Alexander van Delft

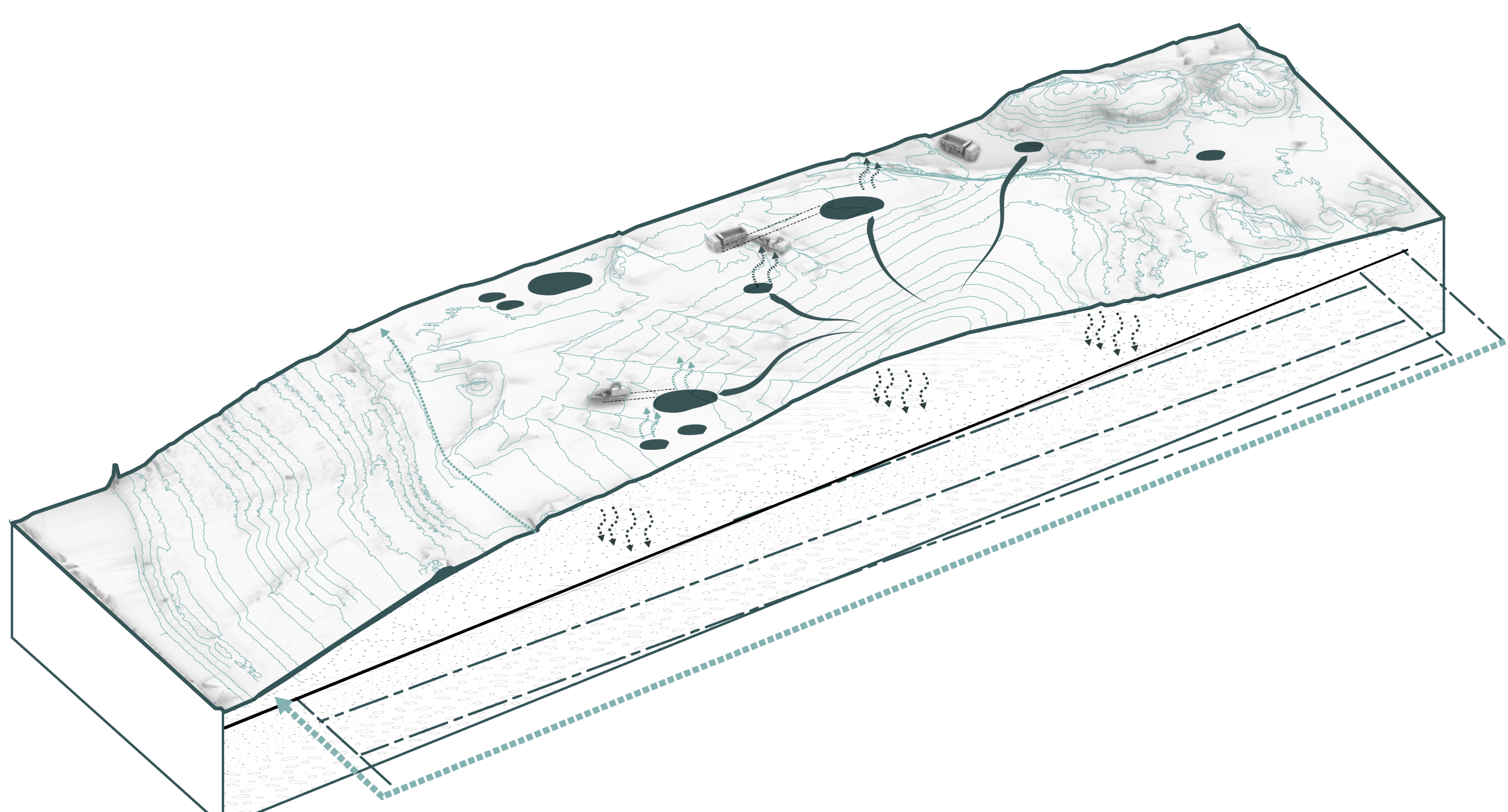
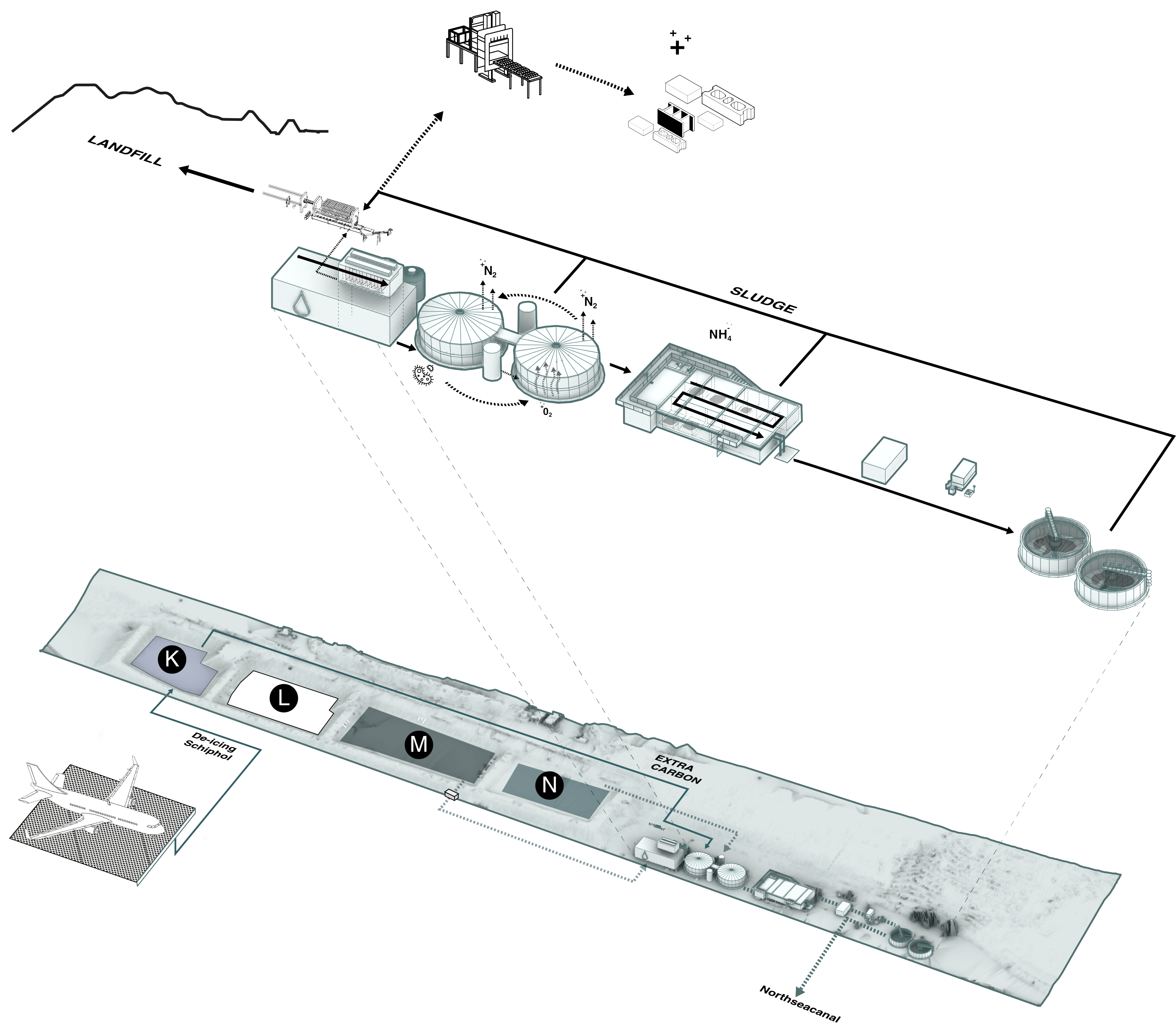


SITEPLAN HIDDEN WATER 1:750

The system of treating the wastewater is an open, never ending and non-circular cycles that will remain until the end of time. The toxicity will be there long after humans will seem to exist. Is this a world that we want to leave behind, where we polluted and consume our surroundings. Can we create a better one?

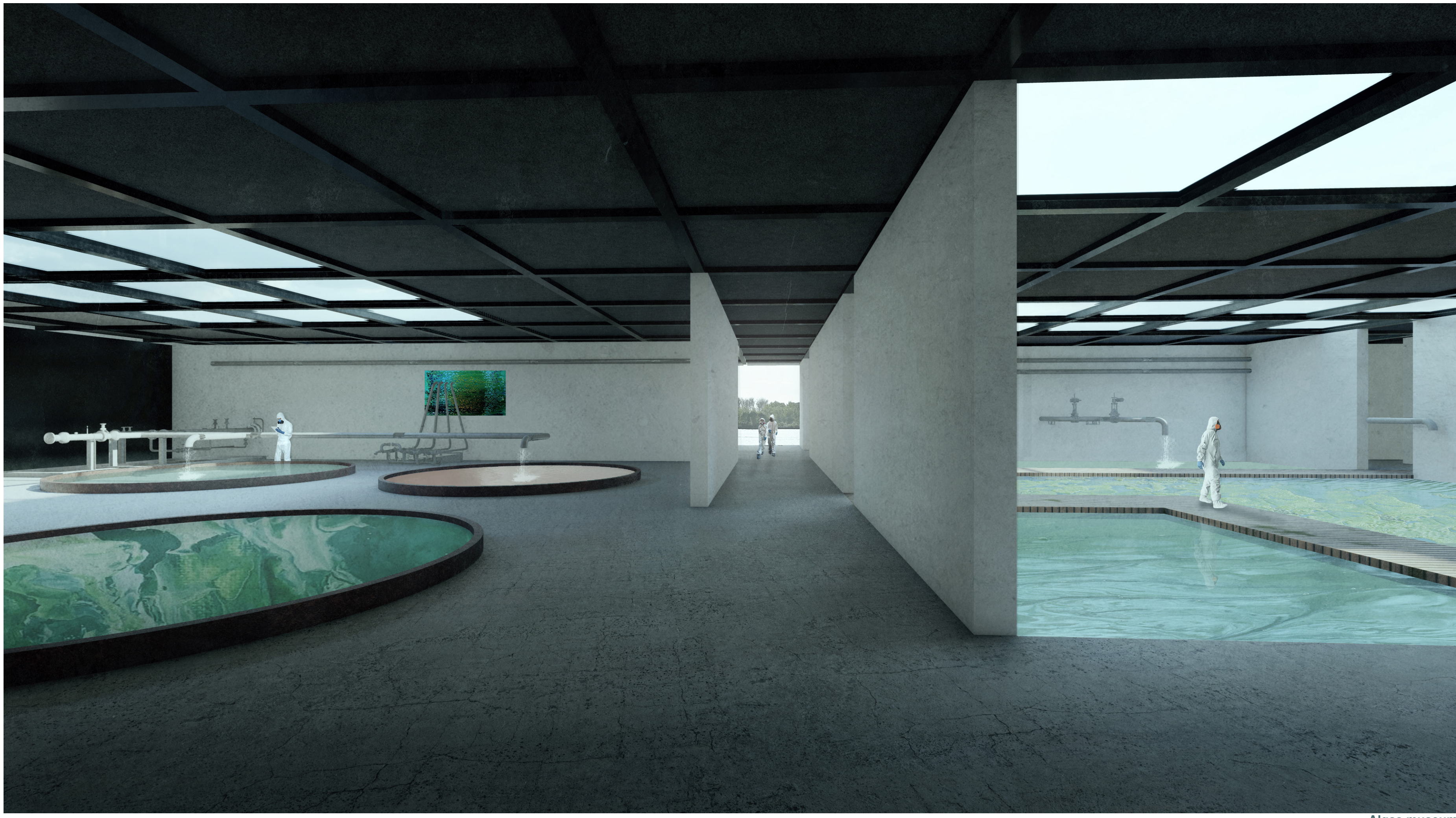
With the closing of the Nauerna landfill, the question remains what to do on the site. A site that will remain its toxicity for an undefined number of years. The project reacts by creating the possibilities for an hydrological experimental testsite. The potentials of the slope, sludge, algae and the hidden pipes system is being explored. This creates a network which is flexible and can slowly be extended.

The add ons create new ways of experiencing all elements of water on site. By going down deep inside of the mountain, follow the natural flow of a terraced landscape with plant-filled basin that create new ecological value and provide drinking water on a toxic mountain. Visit the museum of Algae build onto up an existing basin of the water treatment, where research is being done to look for new possibilities of the potential of the algae on site.

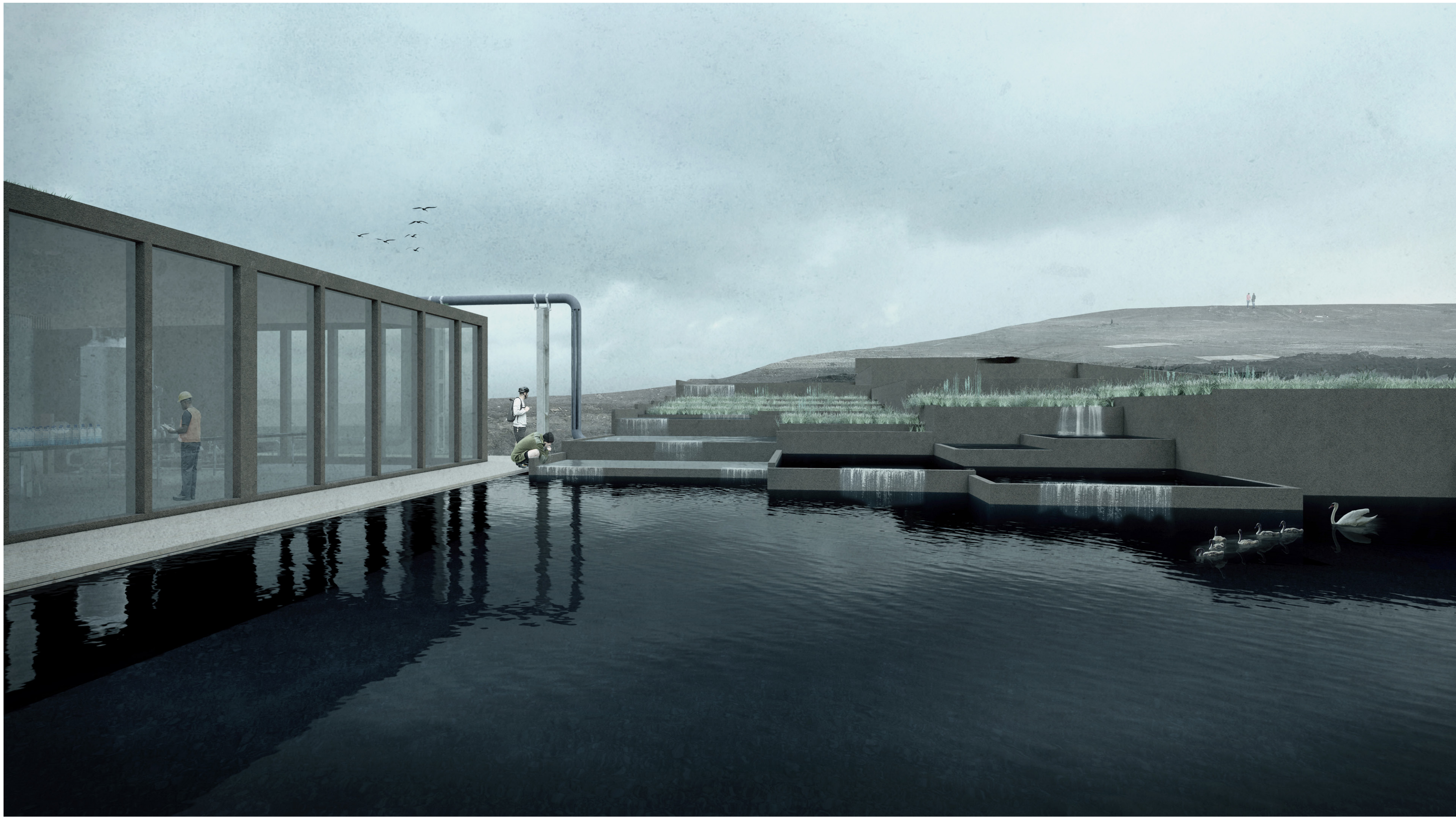


WATERFLOW OVER AND THROUGH THE MOUNTAIN PUMPED TO BASIN N

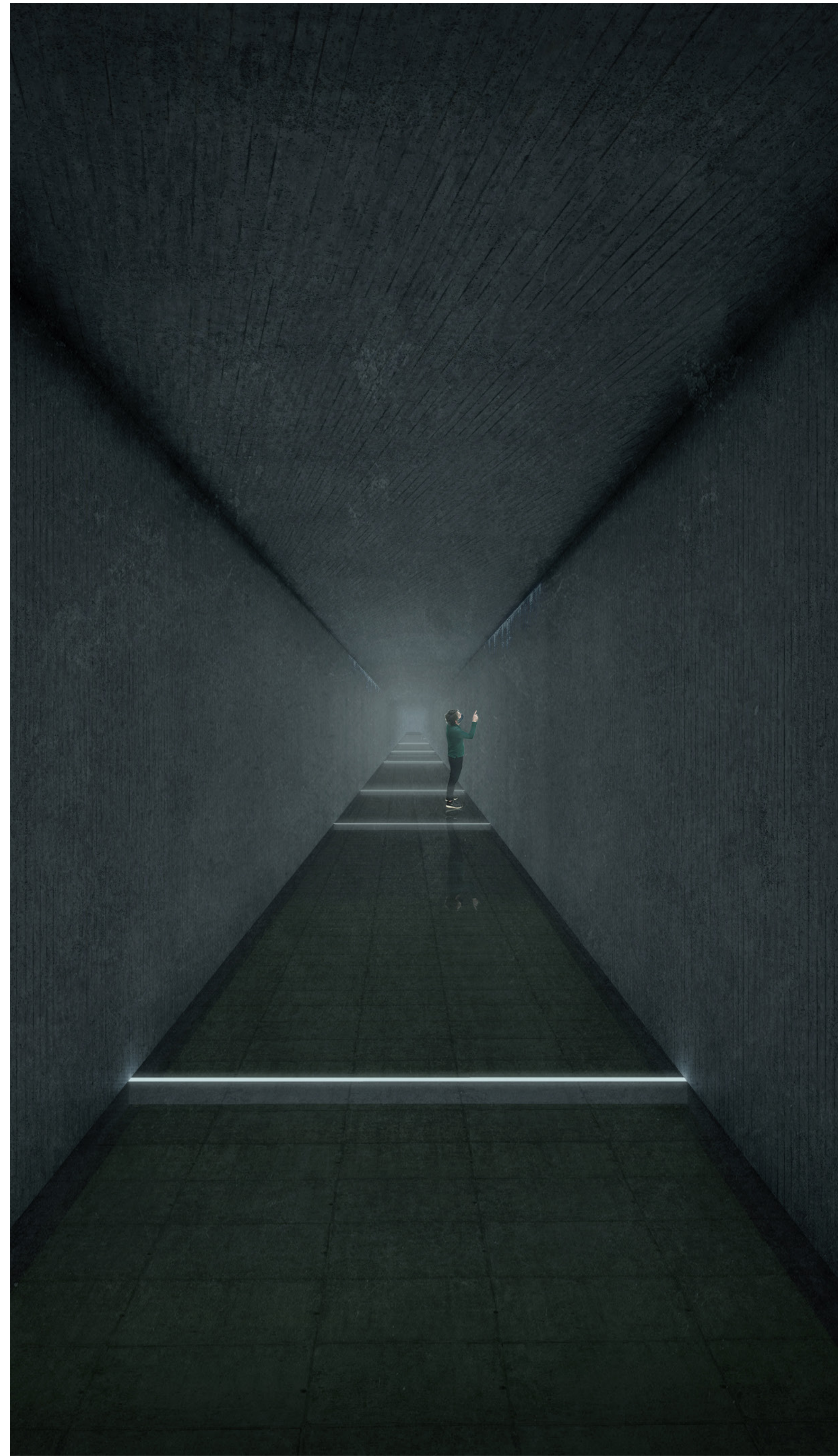
WATERTREATMENT



Algae museum



IMPRESSION FILTRATION MOUNTAIN



IMPRESSION FEAR OF PIPES

The interventions are scattered over the site on strategic locations for the use and potential.

MUSEUM OF ALGAE

Located on top of basin N, percolate water of the mountain is collected, the museum rises above the landscape, the buildings uses sludge bricks created on site as one of its core materials. The museum is an extension and exhibition of algae that are growing in different kind of environments in or on top of the water in landfill. It explore the possibilities and expose different qualities of the algae

FEAR OF PIPES

Hidden below the surfaces and layers of accumulated waste over the years lies a system of pumps and pipes. It creates an curiosity what it is like being down there. Amidst the slope of the mountains lies the entrance to the tunnels. With the Fear of Pipes, the visitor submerges to the network. The smells, sounds and lights (represented by the pipes system) guide you in an passes to the unknown. Water leaks, drips, pumped and flows around you. The transparent material on the flooring makes it visible that the water changes colour and within the lights in the pipes (created by algae), the toxicity of the landfill indicated.

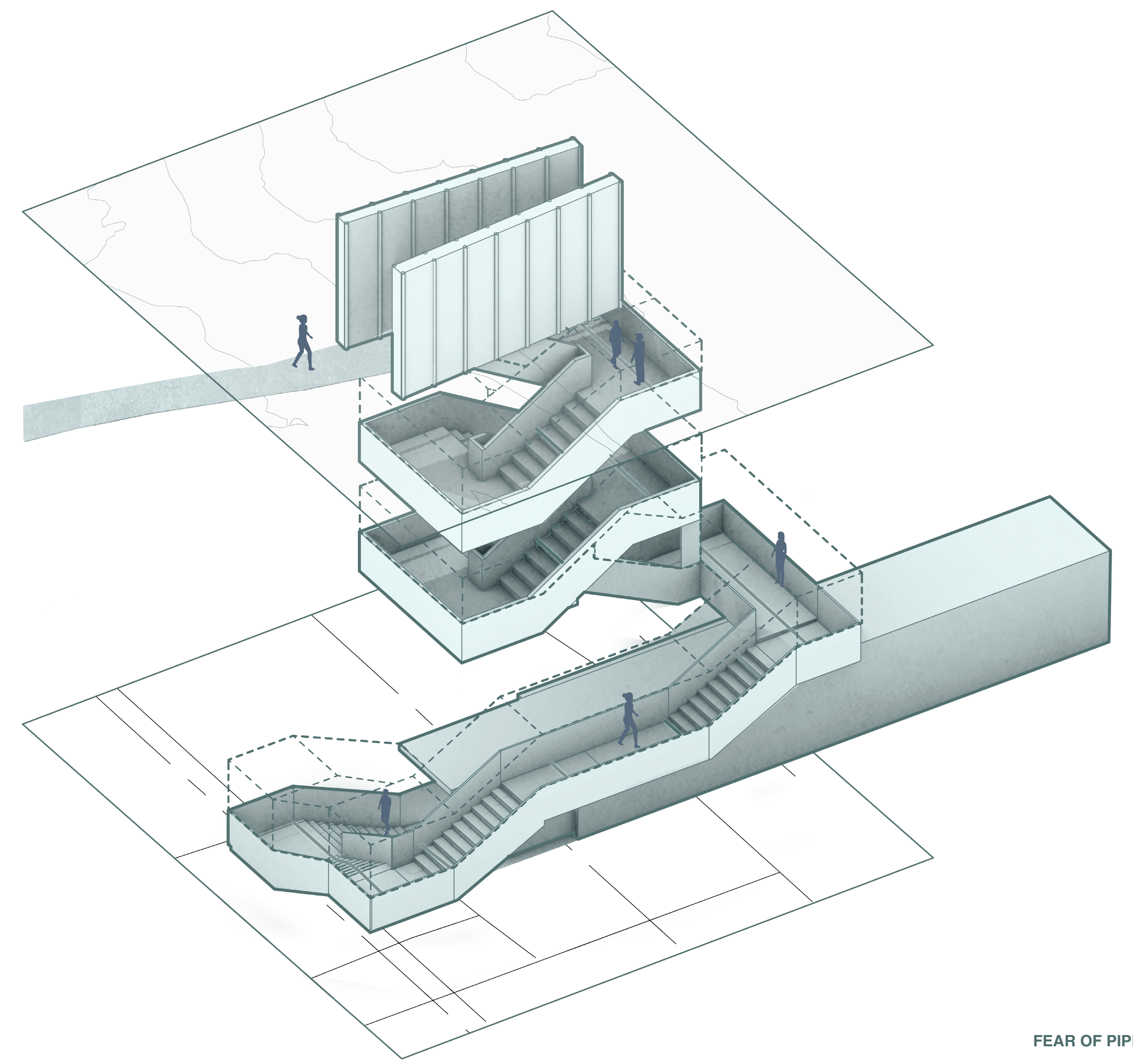
The tunnel follows the framework of the pipes system creating a variety of experiences, different distances of light, different permeability makes water more or less visible.

FILTRATION MOUNTAIN

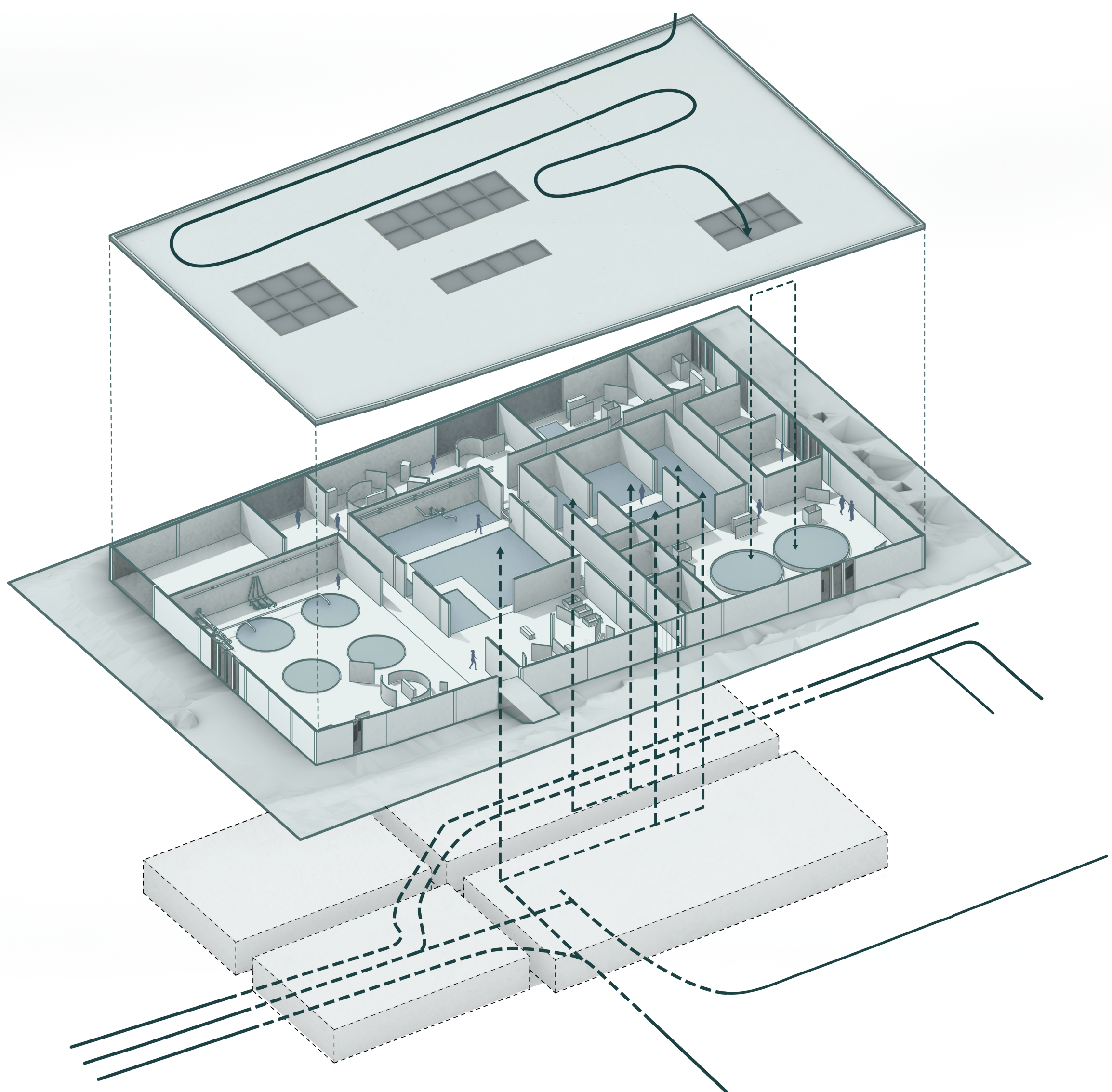
Within the heighest peak of the landfill, within the direction of the hidden framework, a new natural filtration of plants is added using the slope of the mountain. Rainwater flowing down and on the site is purified by a system of connected basins with space for settling of particles before it enters the plantsbased filtration.

The overflow between the different basins makes the falling rainwater clear, it imitates natural sounds of water flowing down the landscape, it makes

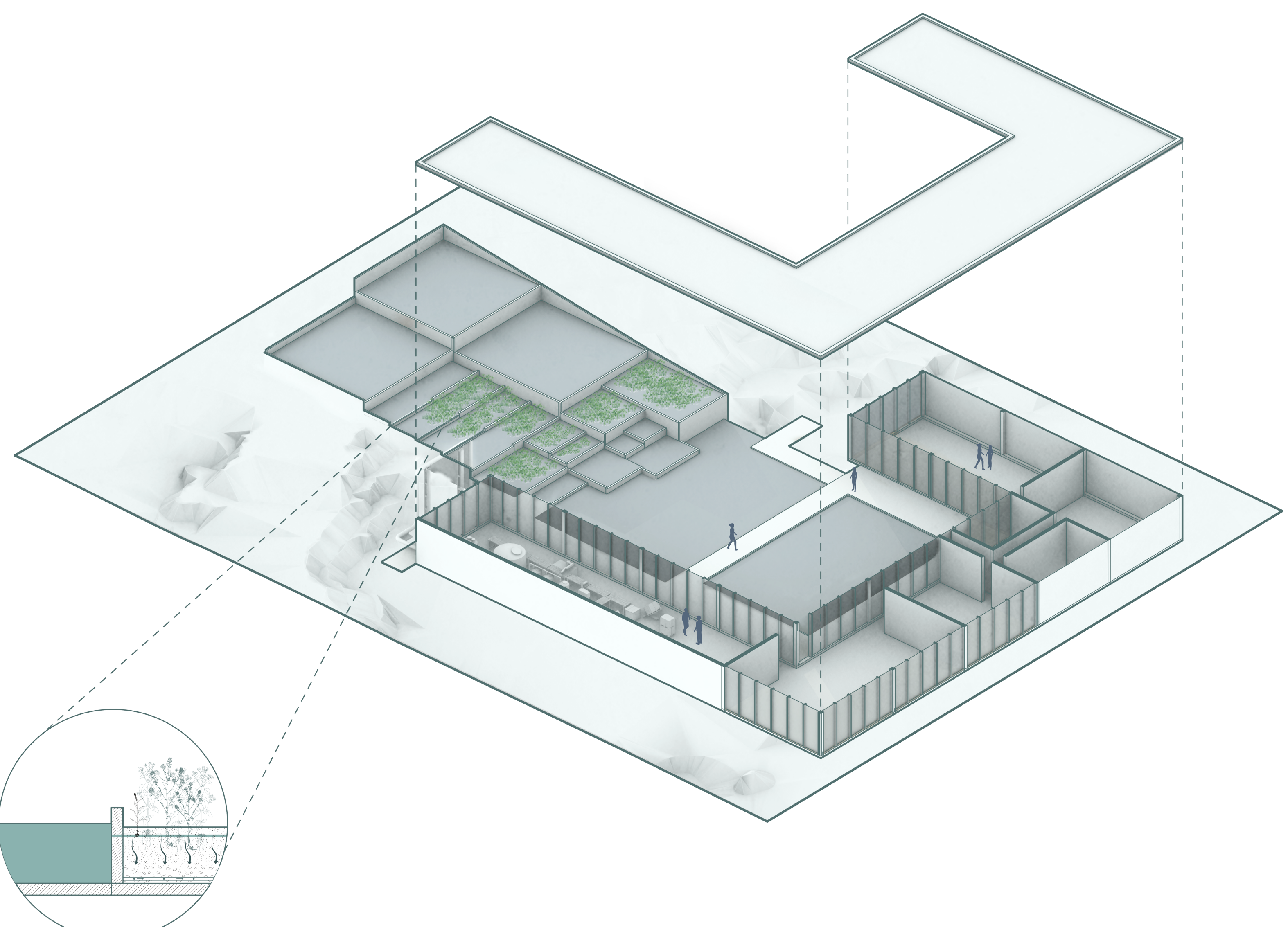
The add of the different kind of filtration explores not only the possibilities of creating drinking water on a toxic landfill but used a waste product of the current water treatment as construction material for the ponds and building.



FEAR OF PIPES



MUSEUM OF ALGAE



FILTRATION MOUNTAIN