

# SAPHO

It all starts with women

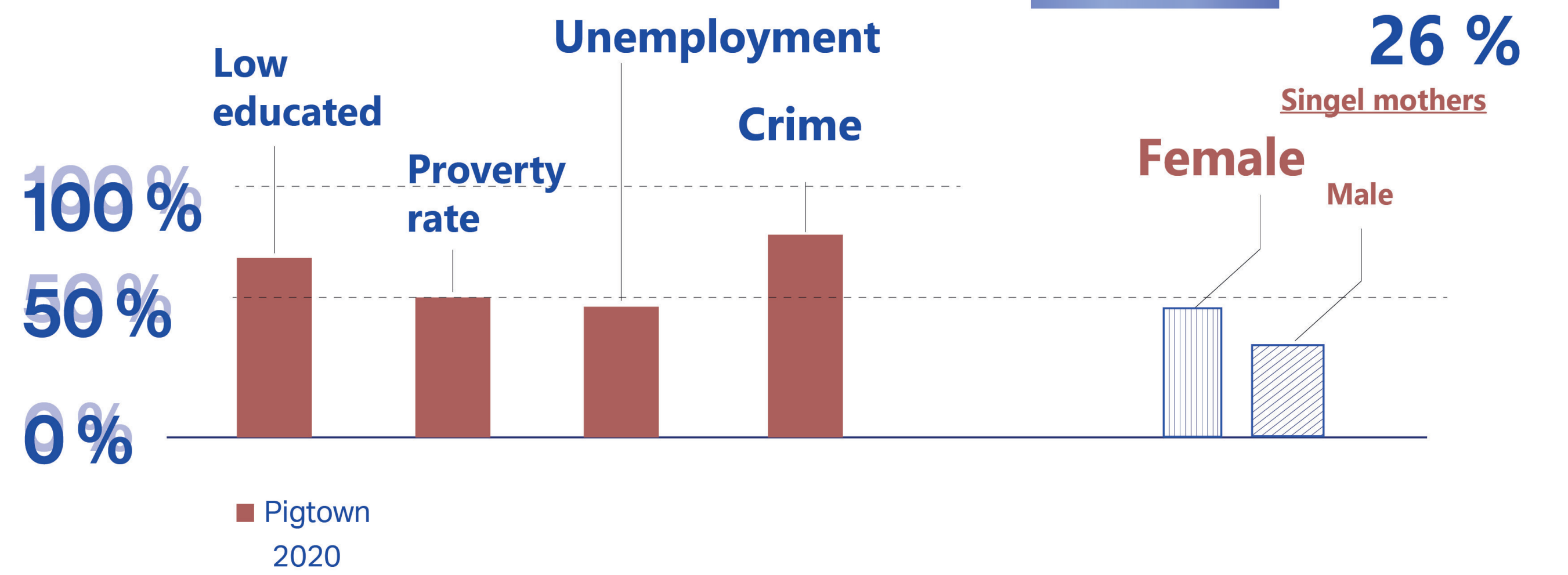


## Location



## Demographic

Population  
~6500



## Problem statement

- Low educated
- Low Income
- High crime, unsafe places

## Whats needed

- More educated in all options
- More and stable income
- Stop crime / less crime safe places

## How possible? - concept

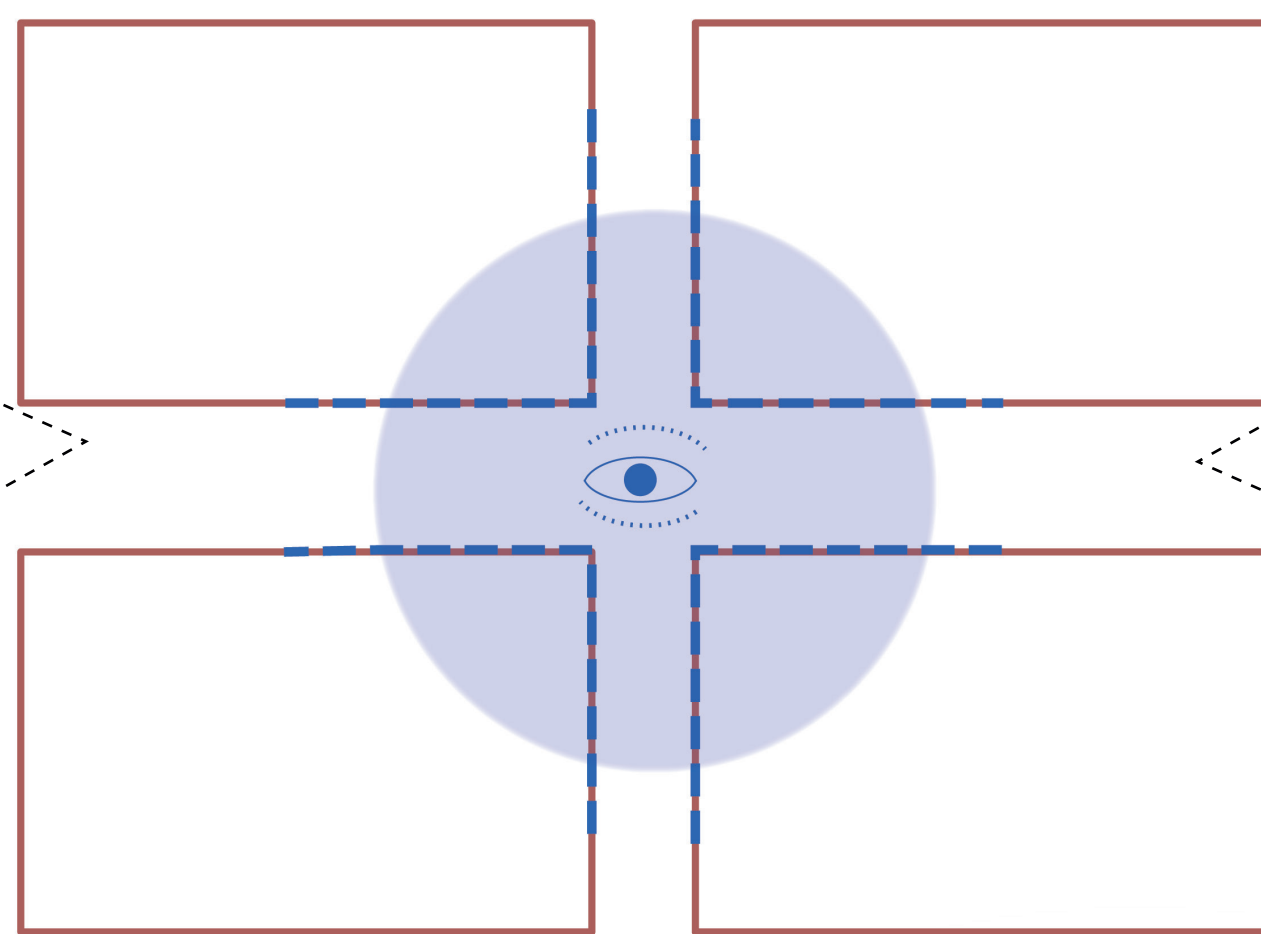
- Stimulating women's development
- Tackling crime

## Intervention

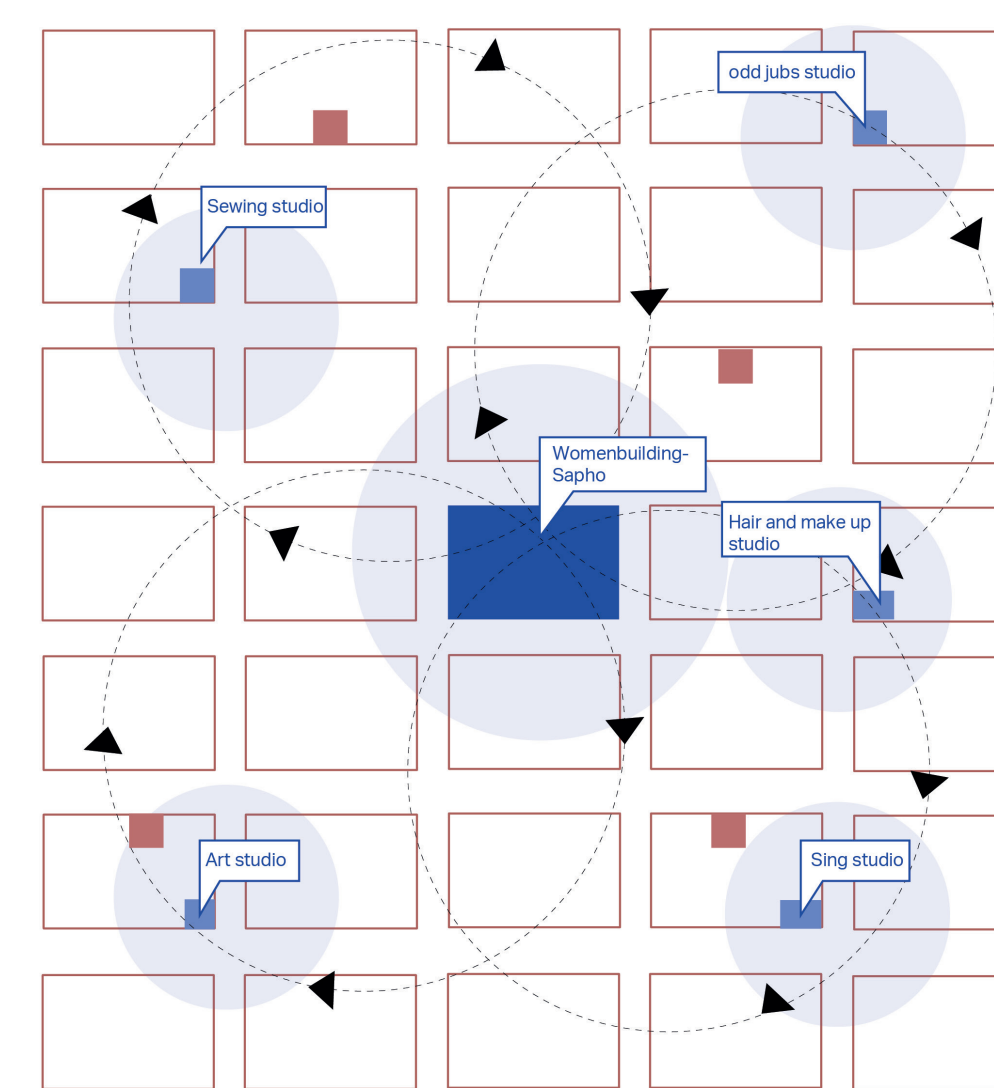
- Womenbuilding
- + Studio's
- Tackling intersections for a view of the street



Zoom in

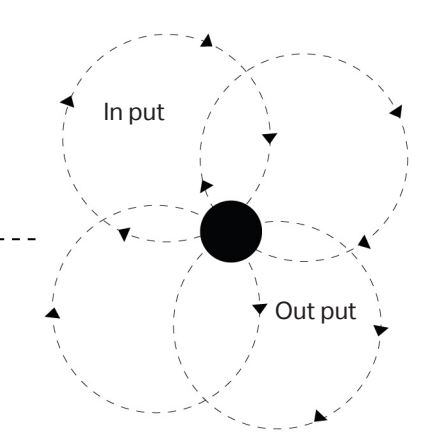


Zoom out



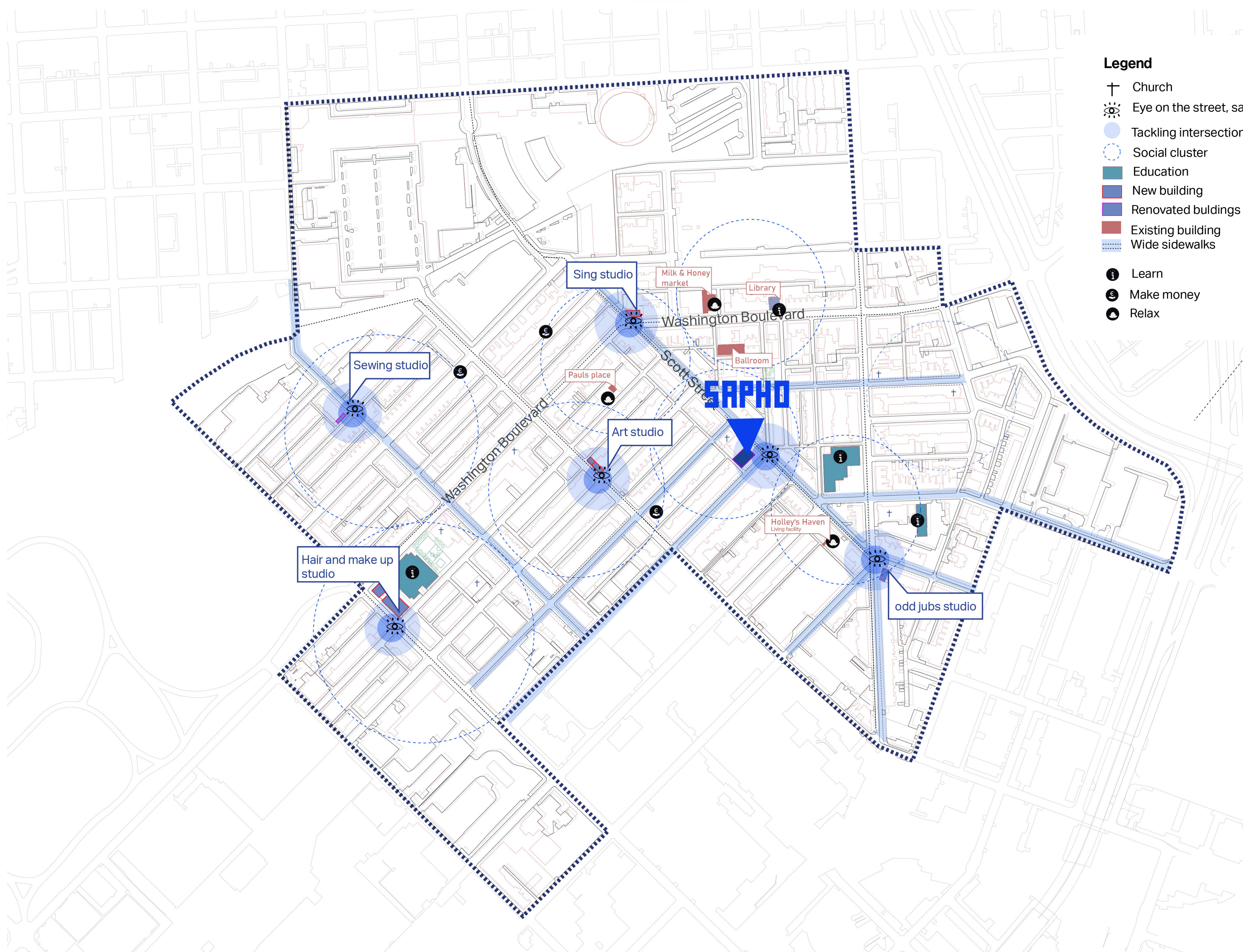
- Legend
- Existing buildings
  - Existing facility
  - studios for women so they can develop themselves
  - Sapho, womenbuilding
  - unsafe places where crime often occurs

Eco system



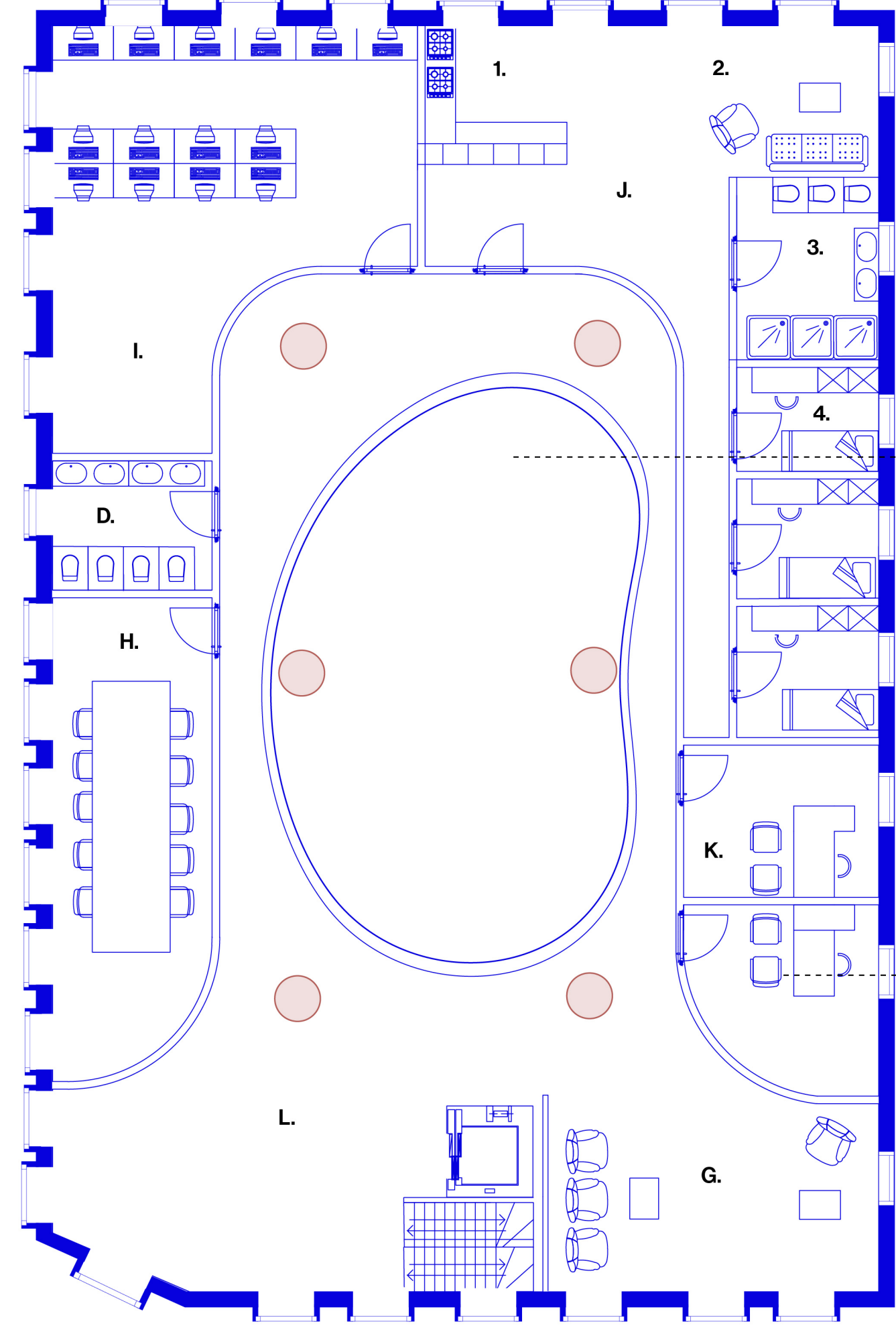
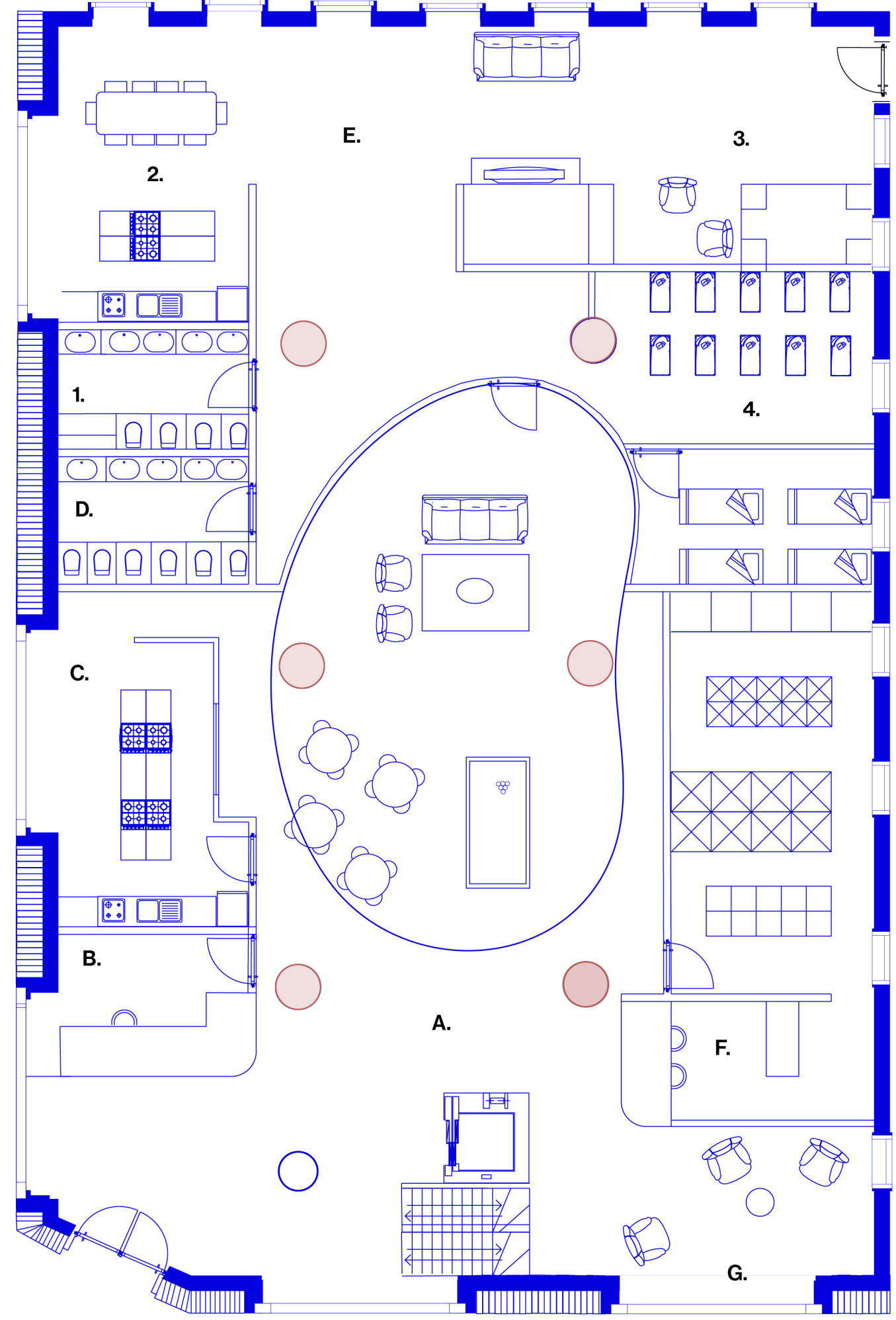
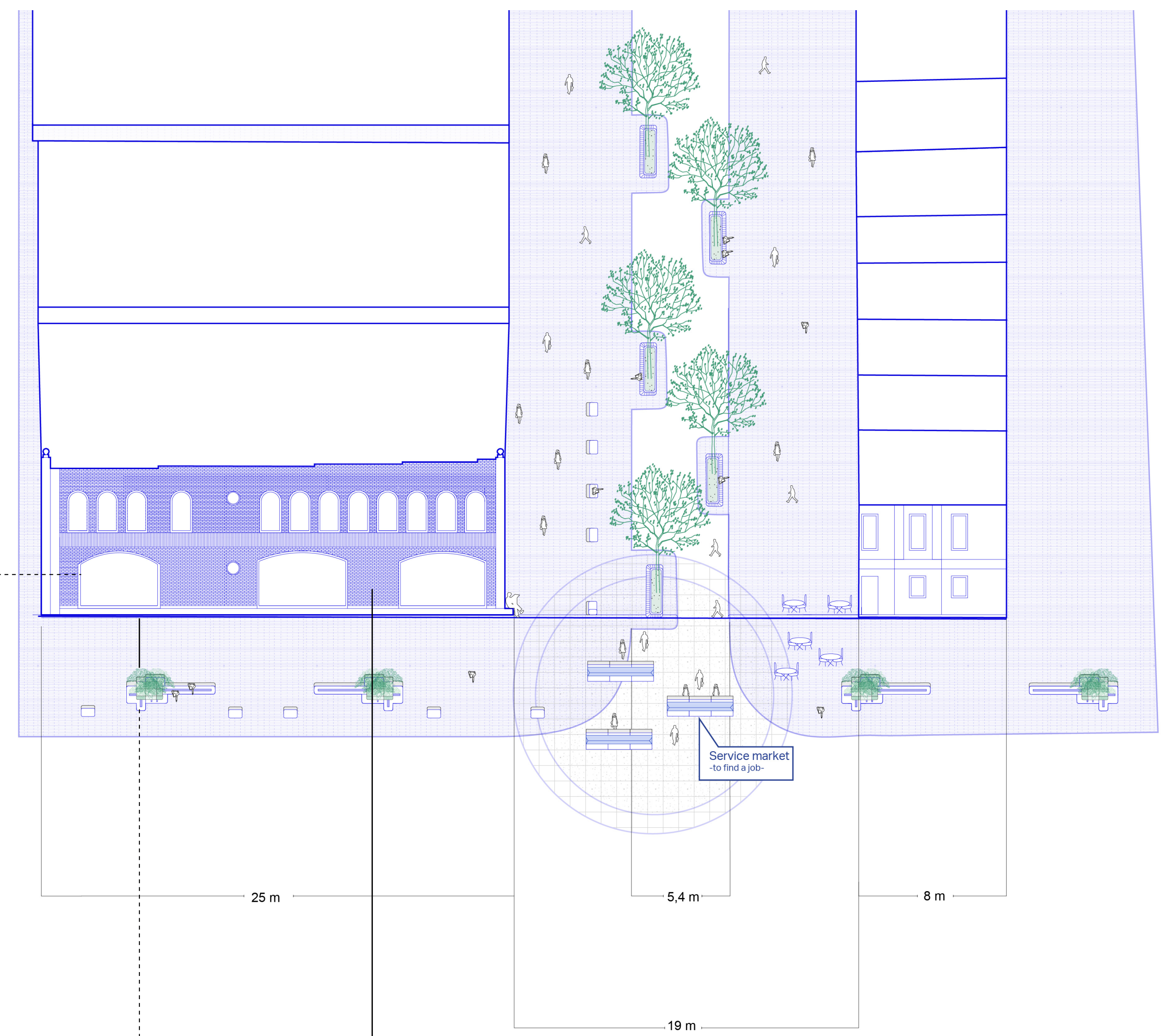
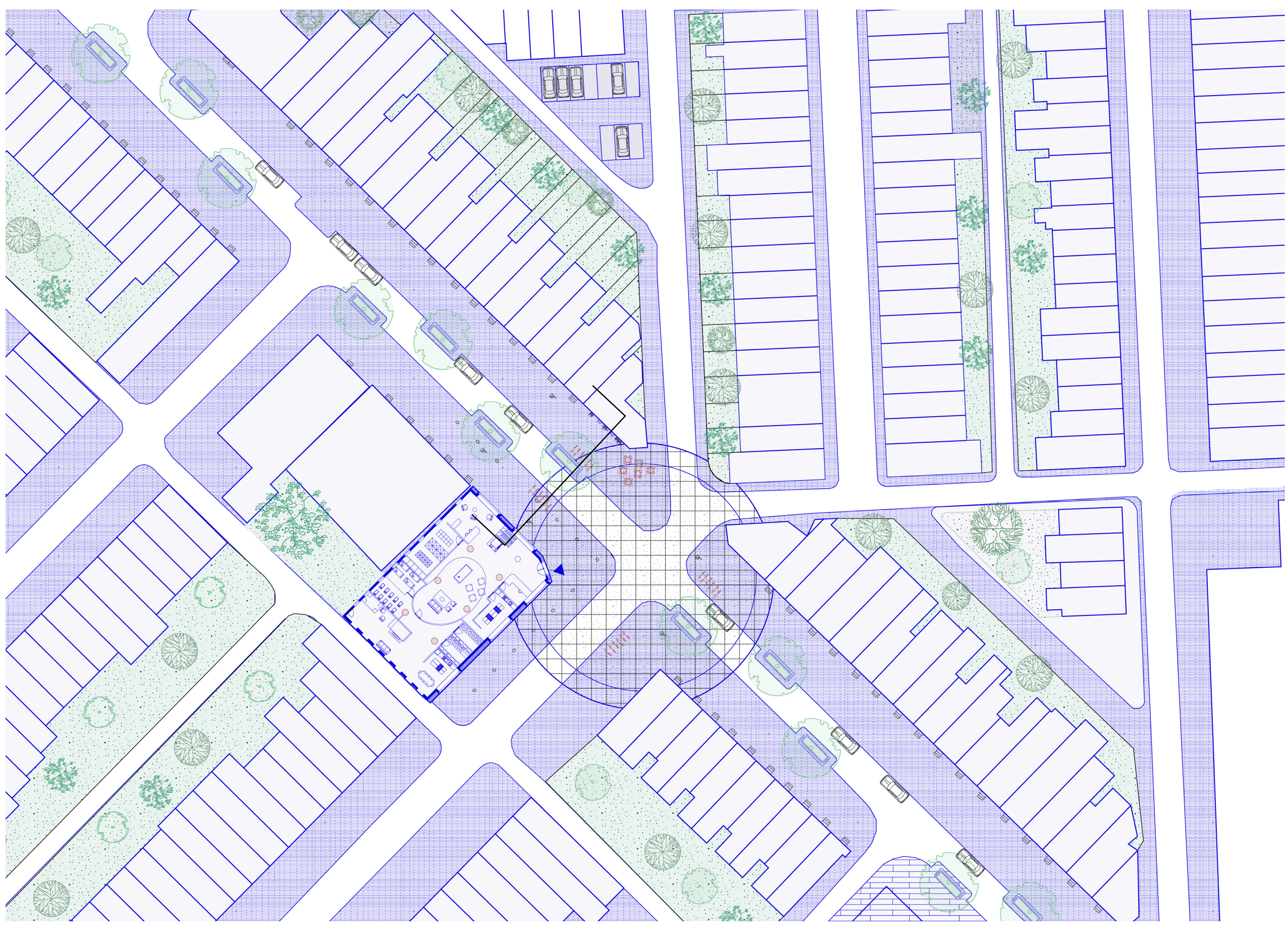
For example: Supermarket "Honey and Milk" delivers products to the womenbuilding "Sapho" that are almost expired.

The women make cotton bags for the supermarket.

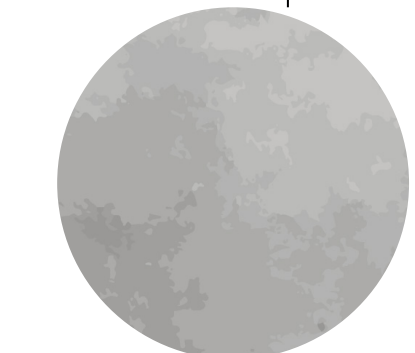


Legend

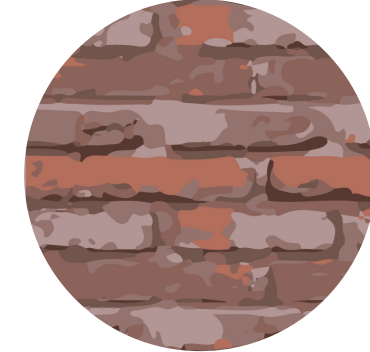
- Church
- Eye on the street, safe places
- Tackling intersections where crime occurs
- Social cluster
- Education
- New building
- Renovated buildings with open facades
- Existing building
- Wide sidewalks
- Learn
- Make money
- Relax



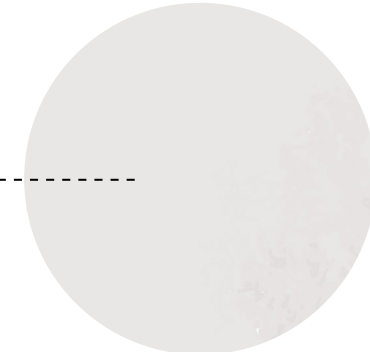
Existing building



Grey concrete, seats on the facade



Coloured bricks, facade wall



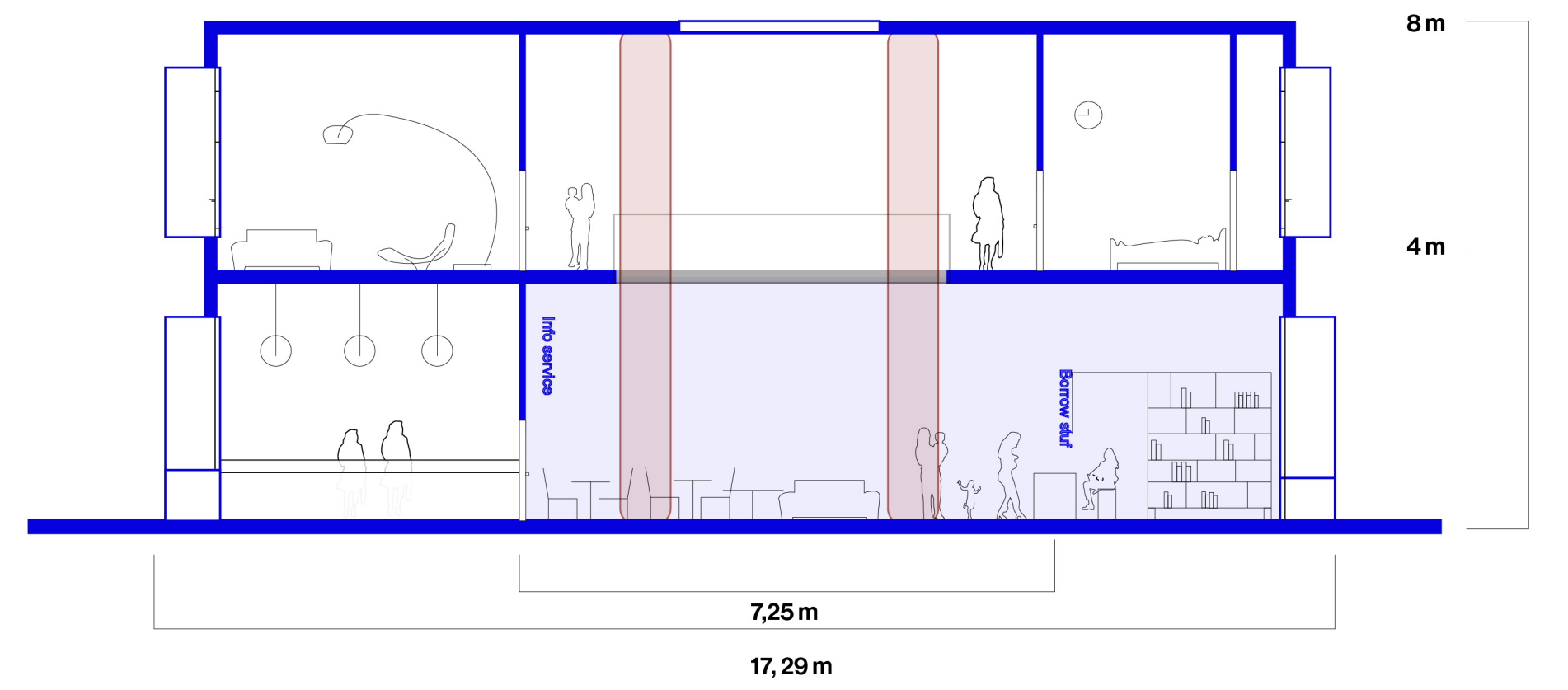
White concrete, for inside wall



Sapho - Womenbuilding.  
Renovate existing building



a safe place  
where you  
can be reborn



Sewing studio



Art studio



Café, Sapho - Womenbuilding



Sing studio

