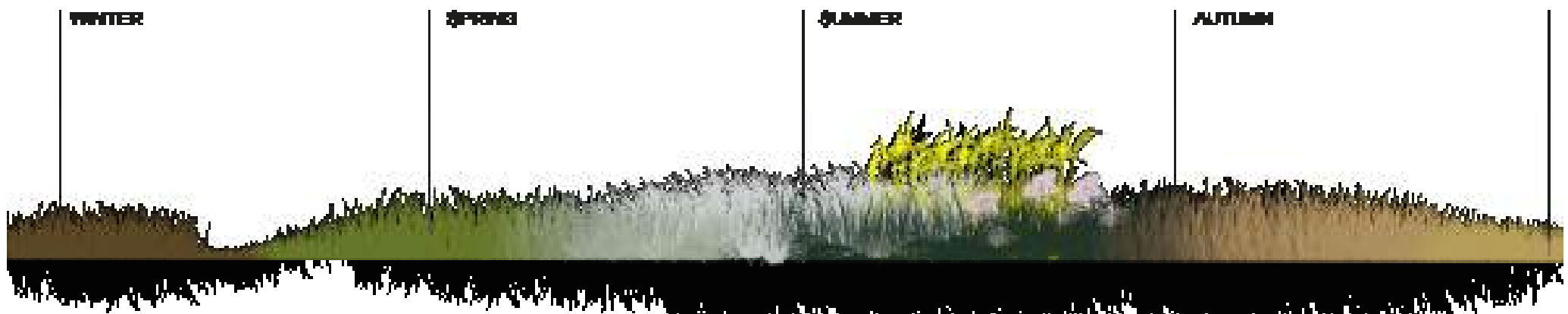
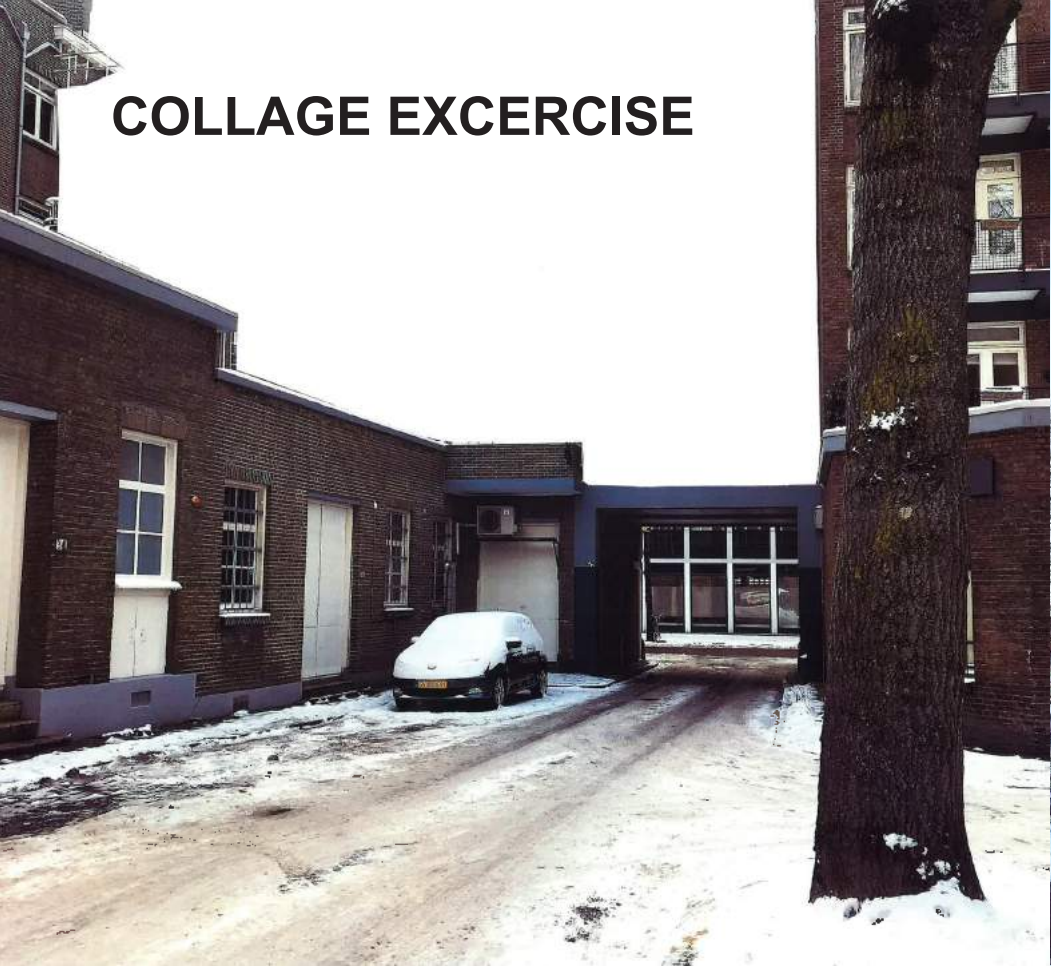


RESEARCH - PROCESS **ACT OF REMOVAL**



FIRST WEEKS

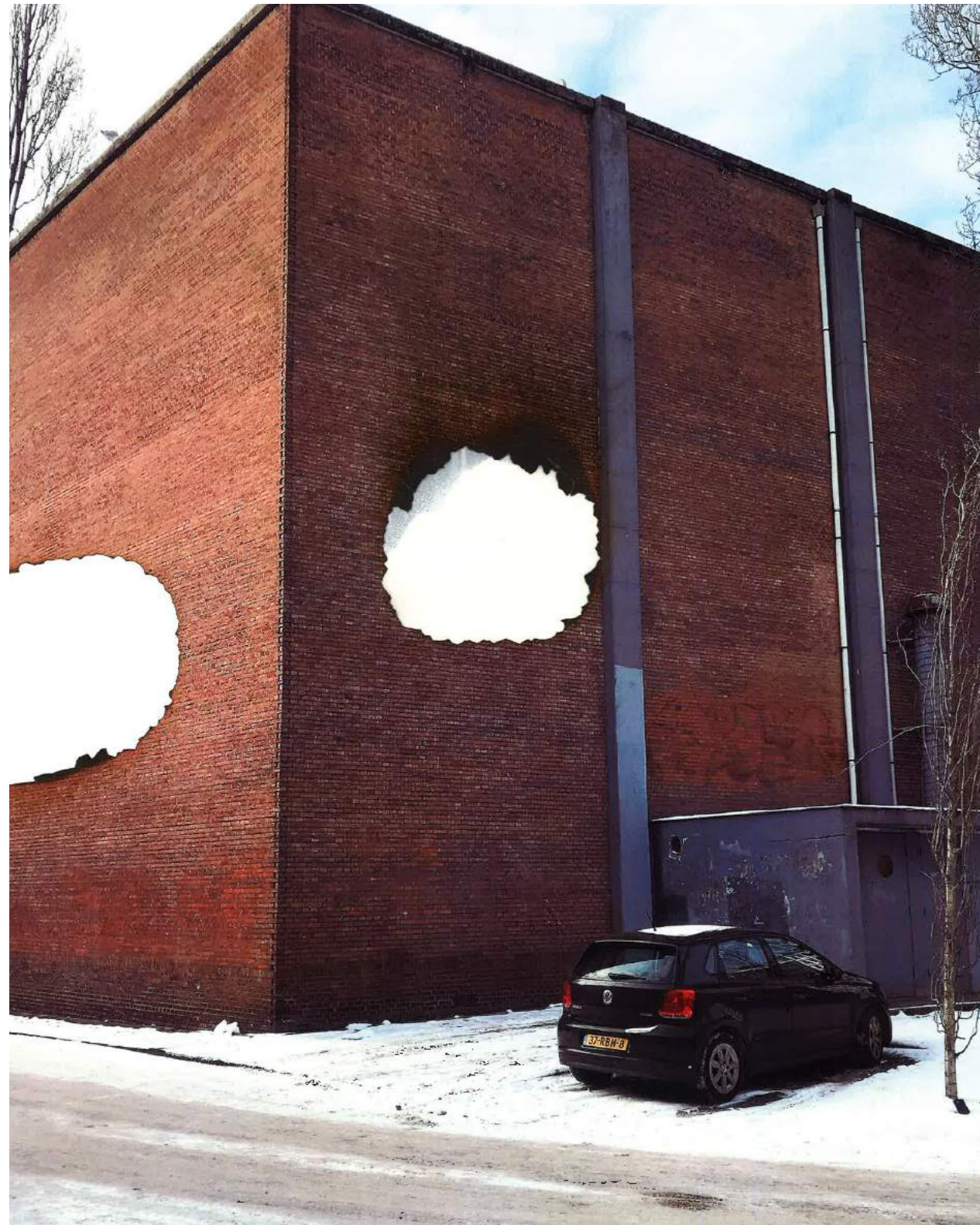
COLLAGE EXCERCISE



OBSERVATIONS - ANALYSIS

I chose this collage for the reason that it provides the most interesting removal for me. It is not yet entirely clear what the influence will be on the space around it. And I'm curious what this could be.

The texture of the edge of the burn creates an interesting edge that will not be uniform throughout. The question is more how this would turn out in real life. Do the ragged edges have to be copied or can you really burn a hole in the wall and how does this affect the bricks? The openings can serve in different ways in this way. It could be a view or a place where you could enter. The holes do not necessarily follow a grid or a rhythm of the current building. And is more of an asymmetrical opening that could actually be used anywhere. By means of sketches and drawings I hope to discover in this way what the consequences and influence can be on the space around it.





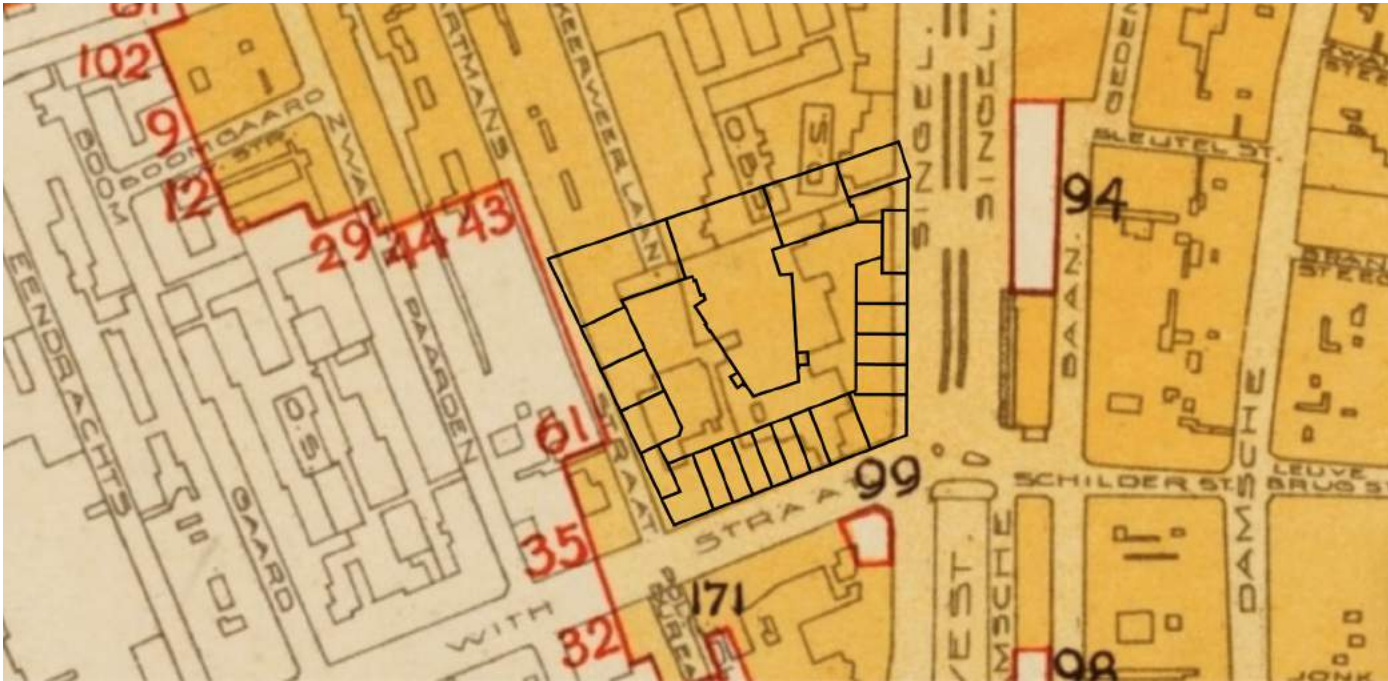
VISION

The fire limit of Rotterdam. The city has completely disappeared in 15 minutes and its history has disappeared into ashes. A few buildings have been renovated during reconstruction, but most have been demolished. The new city has risen from the ashes of the old. The lots have been divided and huge closed blocks have been returned. As a result, the core of these blocks is not activated. While there is an enormous opportunity here.

Because how much do we still see from the “old” Rotterdam. The map **(1)** of the fire boundary shows that the Schiedamse vesthof as we know it today has been completely renovated. This creates a core within the block that is only used for the car. While there is an enormous calm compared to the hustle and bustle of Westblaak and Witte de Withstraat. In view of the enormous migration to the city and the strategy outlined in the book “Stad visie Rotterdam”**(2)** a doubling of the number of inhabitants is expected at our location! What does this mean for our public areas and facilities. Is there still room to enjoy nature in this densification? With this in mind, we demand space for places of reflection and nature.













1. brandgrens luchtfoto bron: www.brandgrens.nl



FIRE BORDER

STRATEGIE AANTREKKELIJKE WOONSTAD



-  (Uit)bouwen sterke woonmilieus
-  Verdubbeling aantal inwoners binnenstad
-  Gentrification stadswijken en historische kernen
-  Gebied Pact op Zuid
-  Grote ontwikkelings locaties
-  Vraaggerichte herstructurering
-  Wonen op het water
-  Cultuurhistorisch erfgoed inzetten als ontwikkelingskracht
-  Proactieve aanpak particuliere voorraad
-  Actief beheer overige wijken

2. Stads visie Rotterdam, gemeente rotterdam.

HISTORY OF THE FIRE BORDER

memories of the fire in rotterdam

Brandgrens - Rotterdam War Memorial of WWII - permanently marks the areas of the city that were destroyed by the bombing on 14 May 1940 and the ensuing fires that broke out. The bombing only lasted fifteen minutes but managed to destroy practically all of Rotterdam's city centre. West 8 won the design competition in 2007 organised by CBK Rotterdam.

The design uses light objects to mark the fire limits permanently in the public space. An iconic image of a flame is incorporated in circular light objects on the ground and in several information stations, that together form the marking. The image of the flame shows a visual connection with Zadkine's statue commemorating the bombing of Rotterdam. The light objects come to life at night illuminating the icon. This physical marking of the fire limits is coupled with information about the historic meaning of the bombing, accessible through the information stations and a website.

On the 14th of May 2010, exactly 70 years after the bombing, the permanent marking is finished with the unveiling of the 'Brandgrenssteen' - the War Memorial Stone, which gives detail information about the bombing.

Source: West-8



MEMORIAL OF THE BOMBING OF ROTTERDAM

“DE VERWOESTE STAD”



The destroyed city is an image that Ossip Zadkine made as a result of the bombing of Rotterdam. It was unveiled on May 15, 1953 and is located on Plein 1940, at the Leuvehaven, next to the Maritime Museum in Rotterdam. The statue is a national monument. Bron: Platform Wederopbouw Rotterdam

THEMES

1. “De brandgrens” as a border for the removal, bring back the open space that was there before the destruction of the city.
2. Give nature a place in the fast growing city

Coriander and cowberry. These are examples of plants that grew on the rubble of the bombing of Rotterdam during the war.



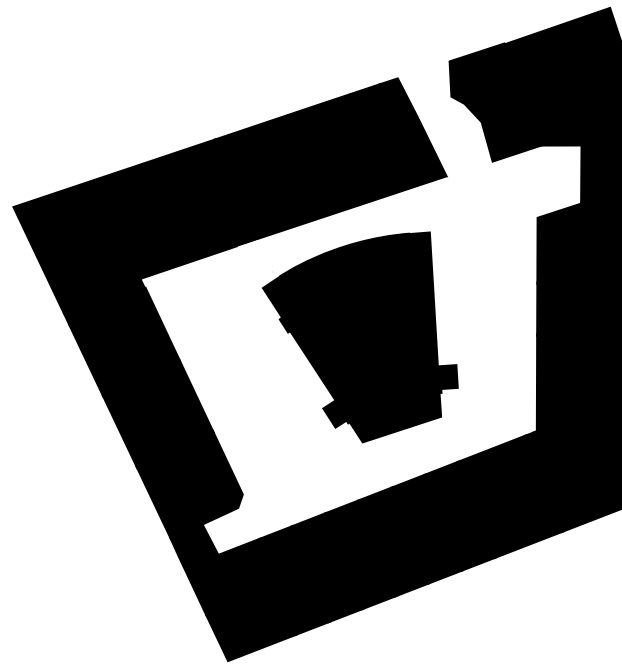
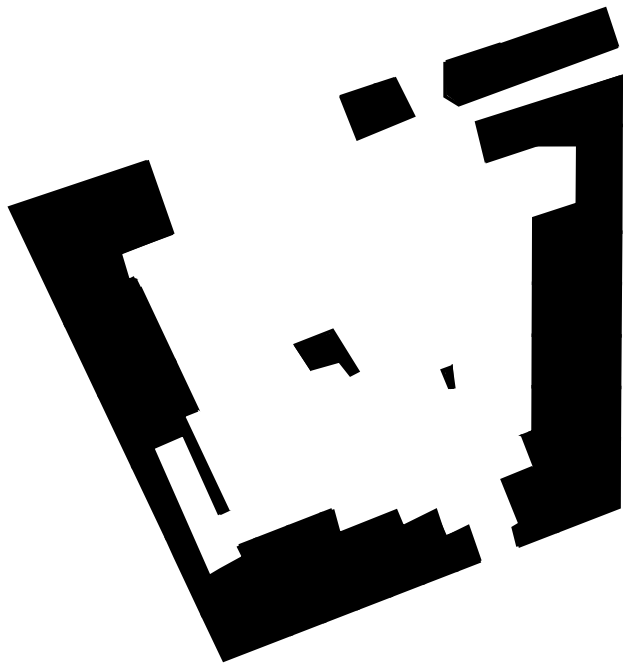
WILD PLANTS ROTTERDAM

The most numerous varieties: Common ragwort, Daisy and Annual meadow grass can be observed blooming all year round. They also fail in cold winters with frosty days. These are therefore high in the rankings every year.

SOORTNAAM	AANTAL X IN/BIJ ROTTERDAM	RANG IN/BIJ ROTTERDAM	RANG LANDELIJK
Klein kruiskruid	22 (van de 22)	1	3
Madeliefje	20	2	1
Straatgras	19	3	2
Canadese fijnstraal	17	4	13
Gewone melkdistel	16	5	9
Grote brandnetel	15	6a	20
Herderstasje	15	6b	5
Paarse dovenetel	15	6c	6
Paardenbloem	14	9	7
Tuinwolfsmelk	12	10	12
Vogelmuur	12	11a	4
Duizendblad	11	11b	8
Witte dovenetel	10	13	10

SCALE

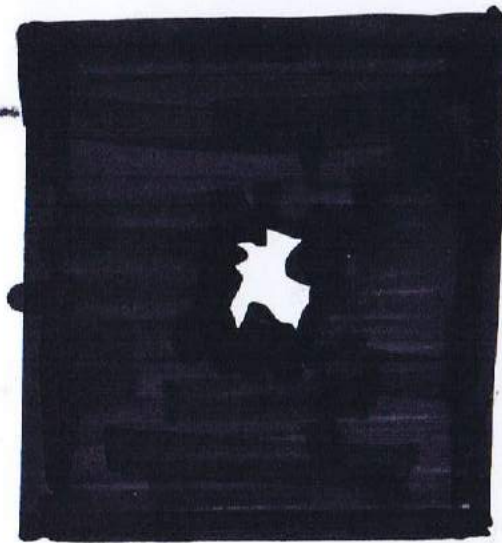
The scale of the removal can be approached in different ways. I have now tried this in 3 ways using the public space of the old city map in the time before the destruction because of the fire. In this way the public space as before comes back alive on the site. This will then be the boundry of my removal.



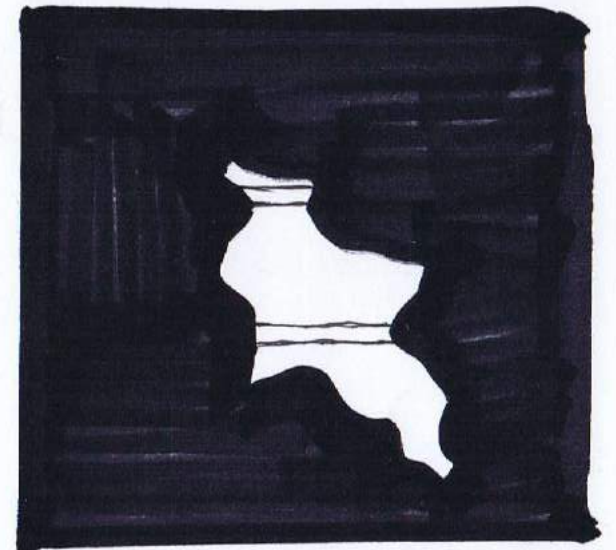
SCALE



Small



Medium



Big

STRATEGY

Not only make a west-east connection but also a north-south connection. To get to the core of the block from the different fronts. Where you will feel like in a green oasis in the middle of the city. A place to relax and retreat from the hustle and bustle of the city.



PERAMA

CERAMA A CLASSIC EVERY DAY CERAMA

iPhone Klinik

Mac'nik



MIDTERM 01.

REFERENCE PROJECTS



Alan Sonfist - Time landscape - New York City
1965 - Present

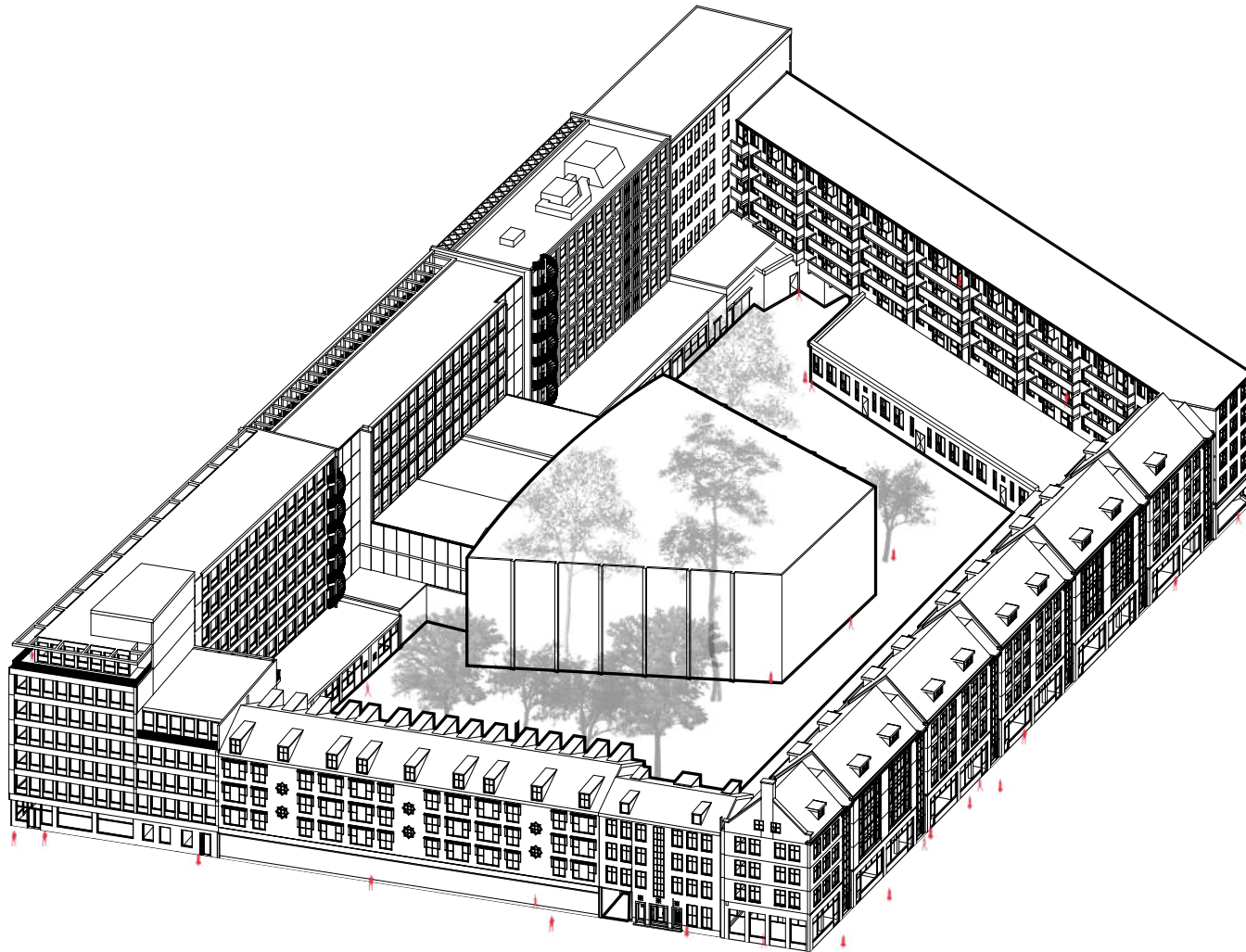


Lois Weinberger - Wild Cage - Joanneumsviertelplatz
2013 - Present

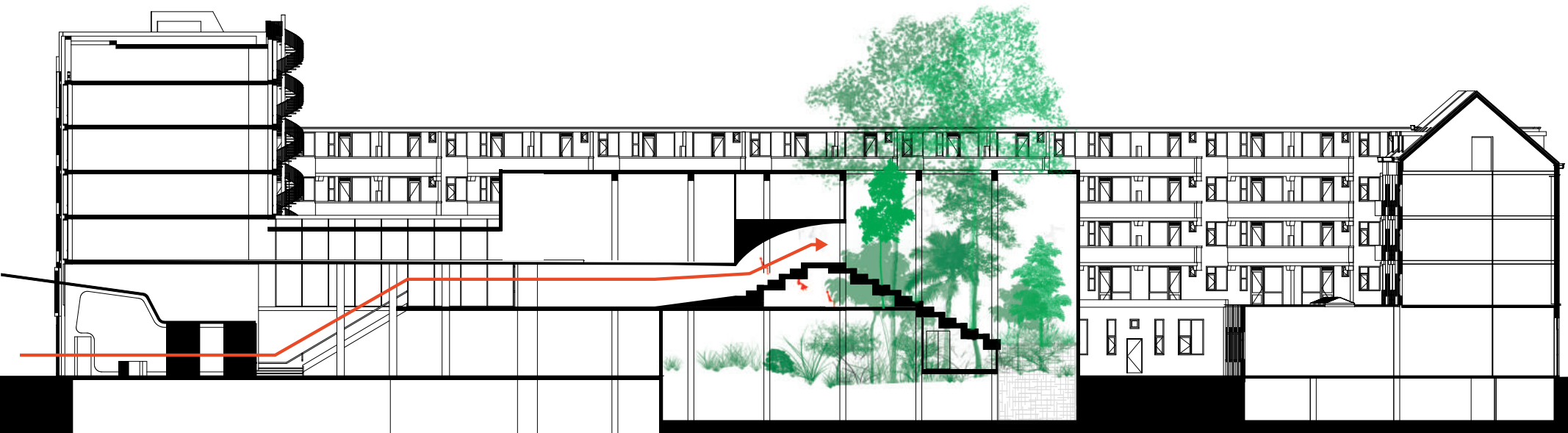


Agnes Denes - Wheatfield - New York City
May 1982

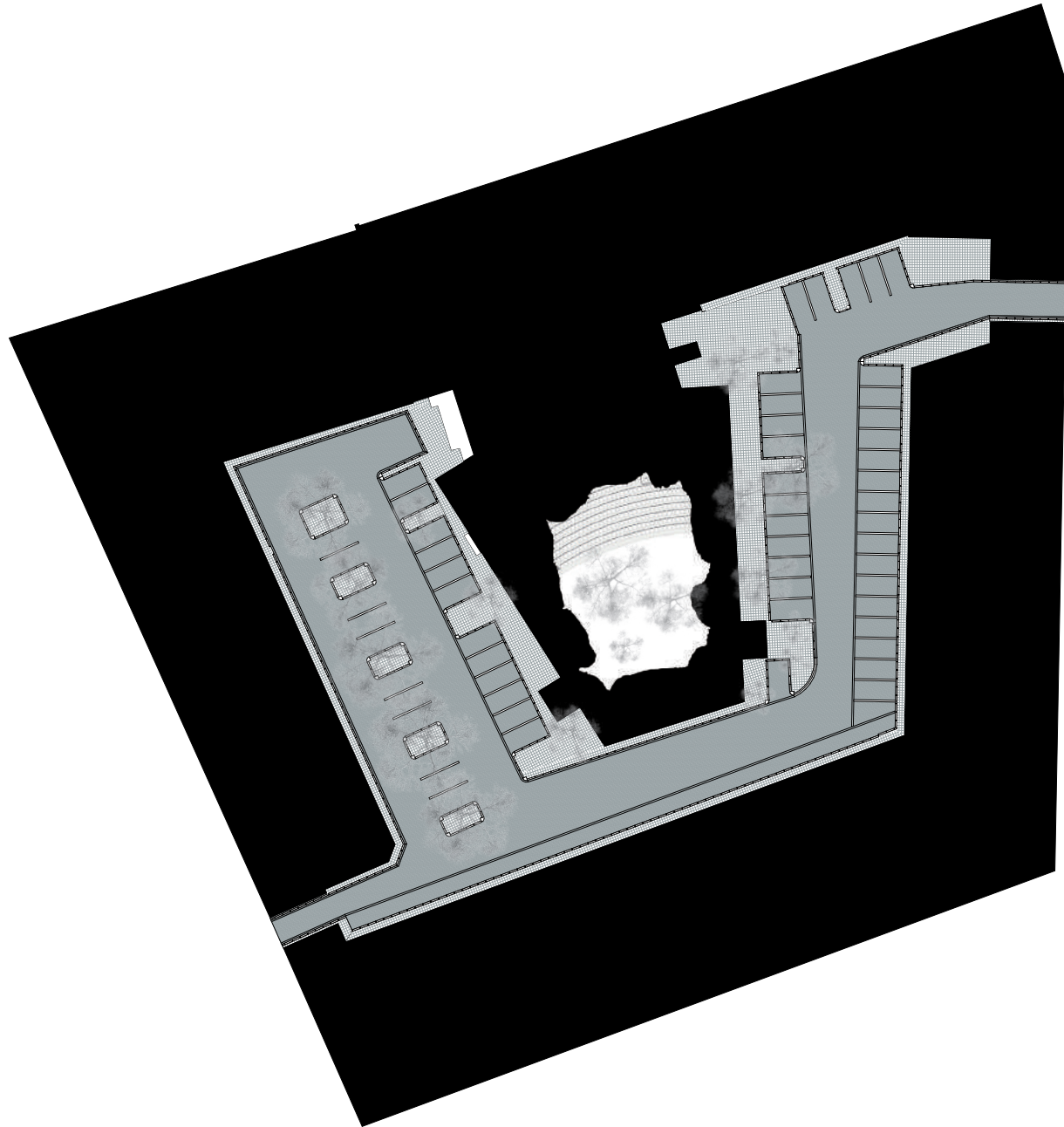
LOCATION OF THE REMOVAL



STRATEGY OF REMOVAL



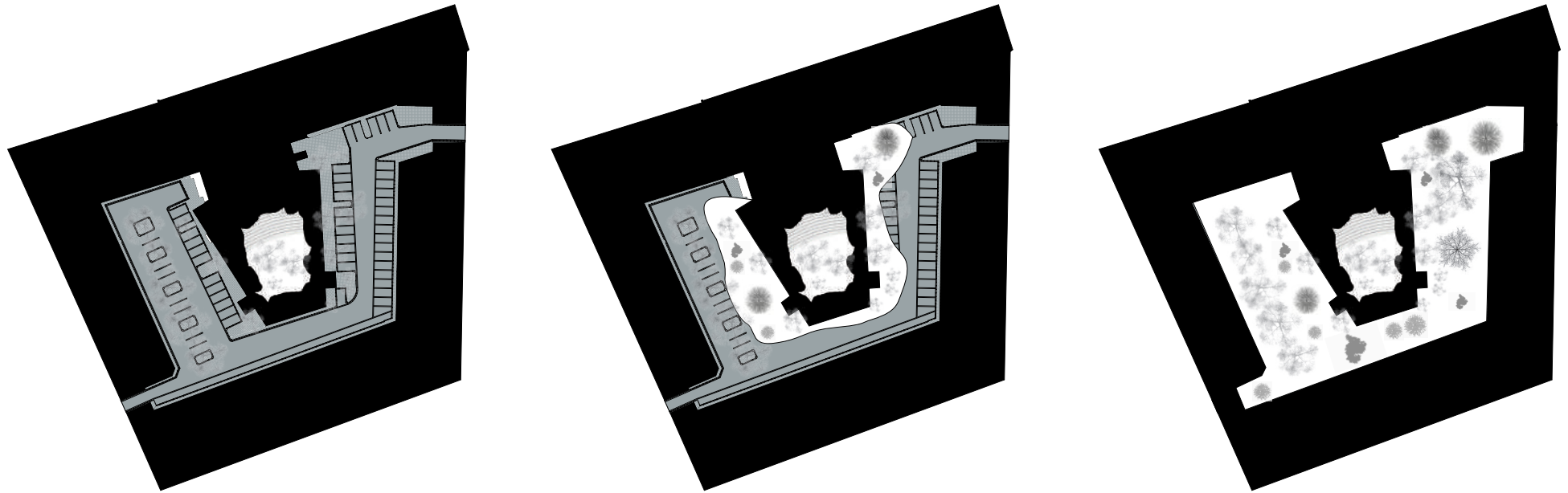
STRATEGY OF REMOVAL



CINERAMA > **GREENERAMA**

STRATEGY

Scale of the transformation (concept)

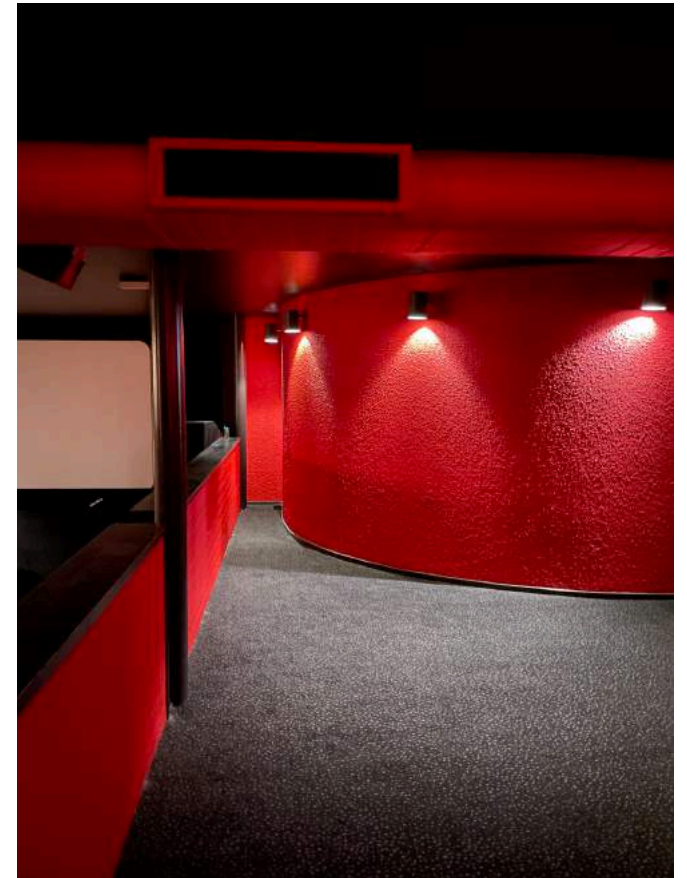
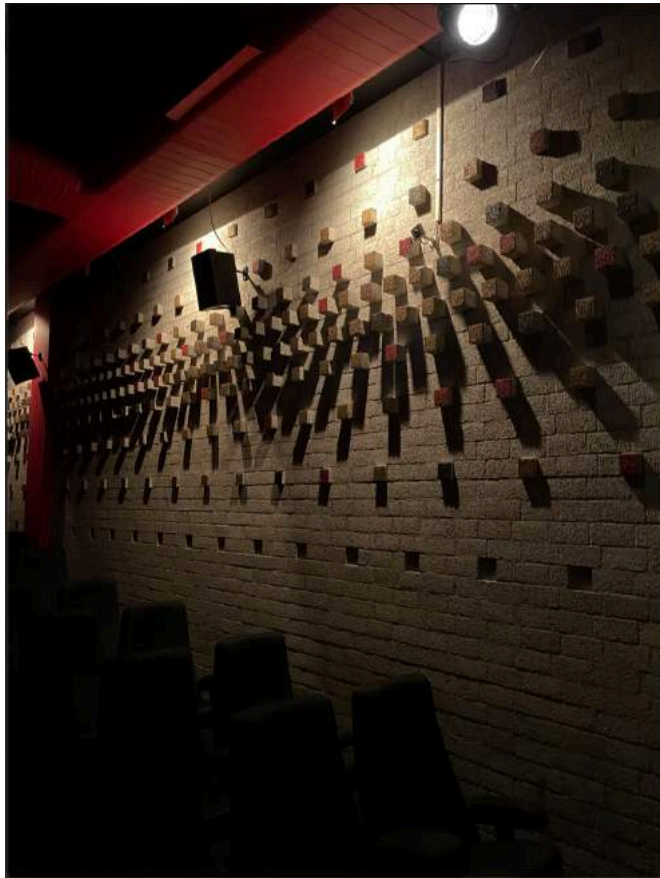


The scale of the removal can be in three fases:

1. starting with the removal of the roof in the cinerama en letting nature grown inside.
2. the greenery will starting exploring the outside of the cinerama.
3. taking over the whole hof and closing it off for the people.

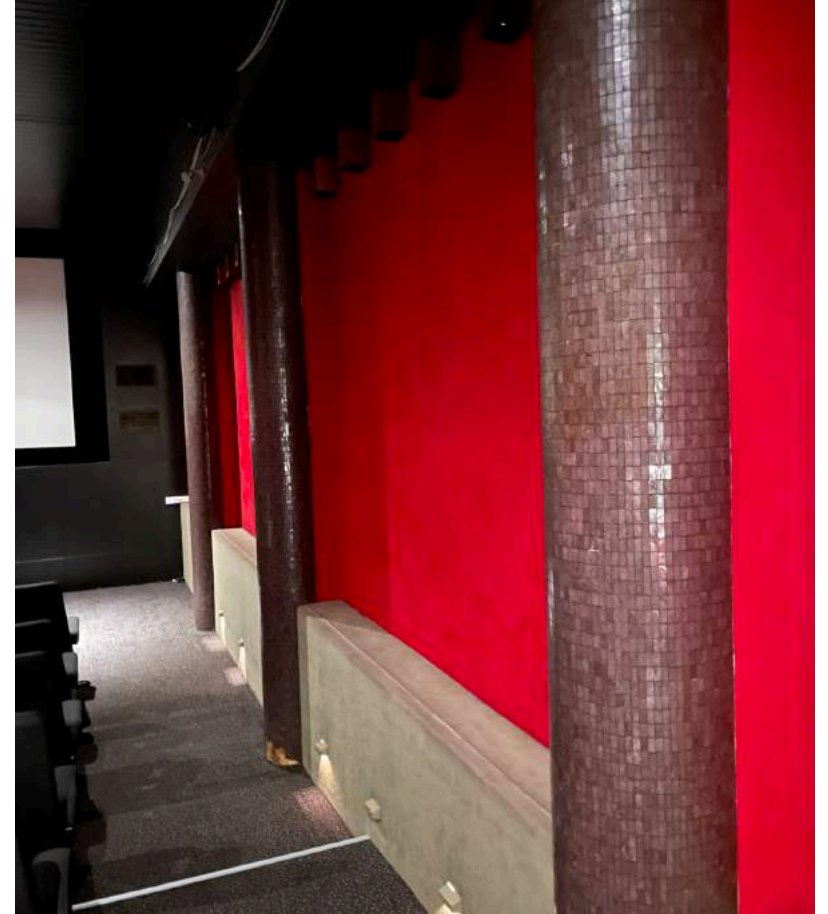
CINERAMA

VISIT



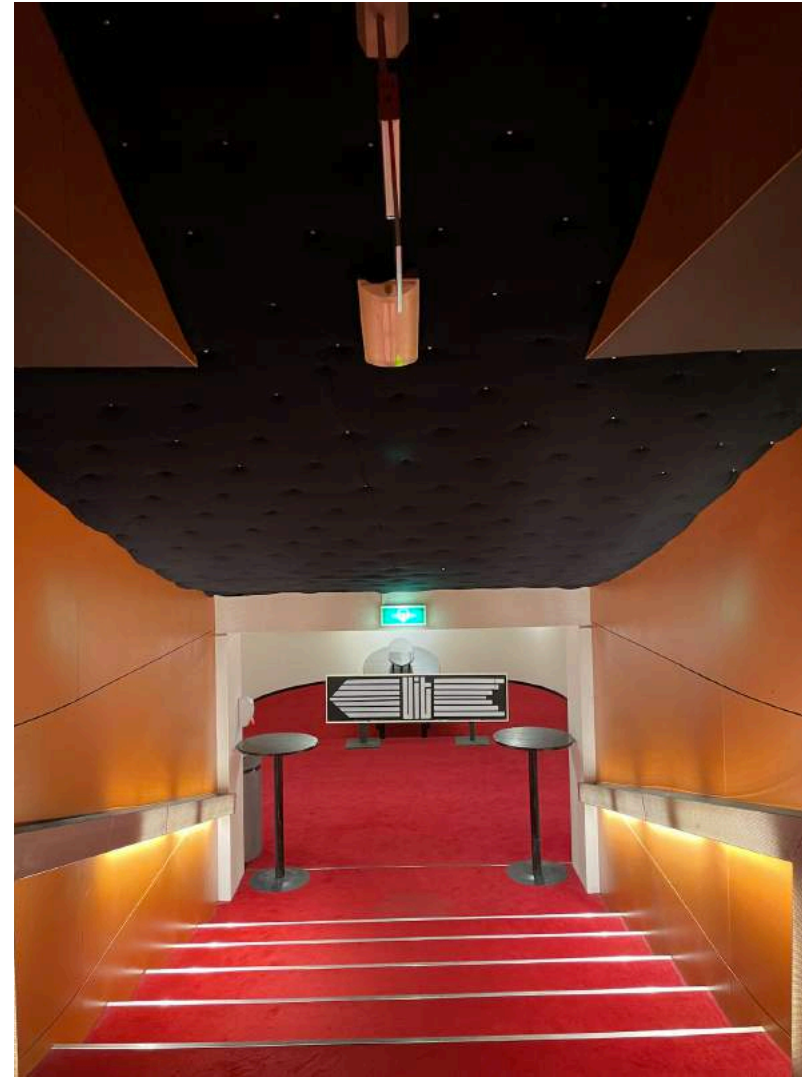
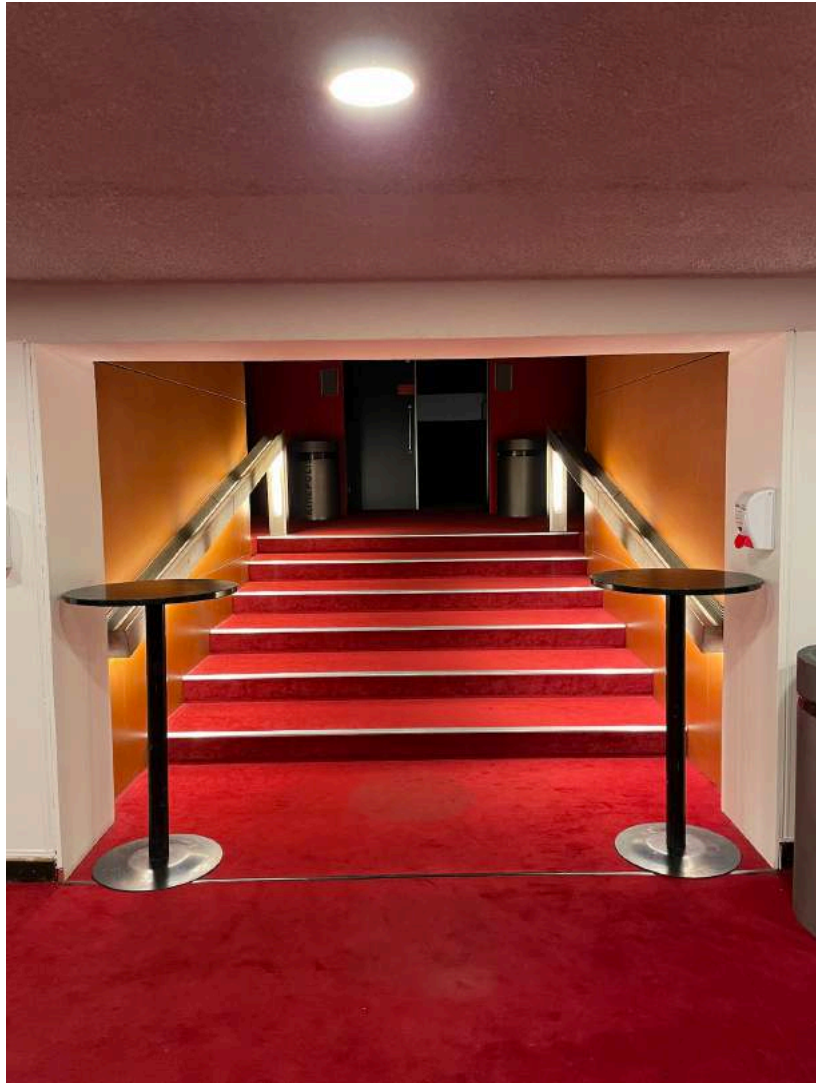
CINERAMA

VISIT



CINERAMA

VISIT



CINERAMA

VISIT





MOVIE WITHOUT END



2021



2025



2040

FLORAWERKGROEP ROTTERDAM

Throughout the year, we keep a list of varieties that are new to the Rotterdam Flora Working Group. In 2020 we will have about 41 new varieties. These species had sometimes been found in Rotterdam before, but not on one of our inventory evenings. This number is a lot higher than 2019, when we only had 22 new varieties.

<https://rotterdamseflorawerkgroep.wordpress.com/jaarverslagen/jaarverslag-2020/>



Straight alsen – *Artemisia biennis* on a future building site at Laag Zestoehoven where all kinds of soil has been supplied.



Tuinkers – *Lepidium sativum*



Tuinkers – *Lepidium sativum*



Zandweegbree – *Plantago arenaria*



Oxalis triangularis

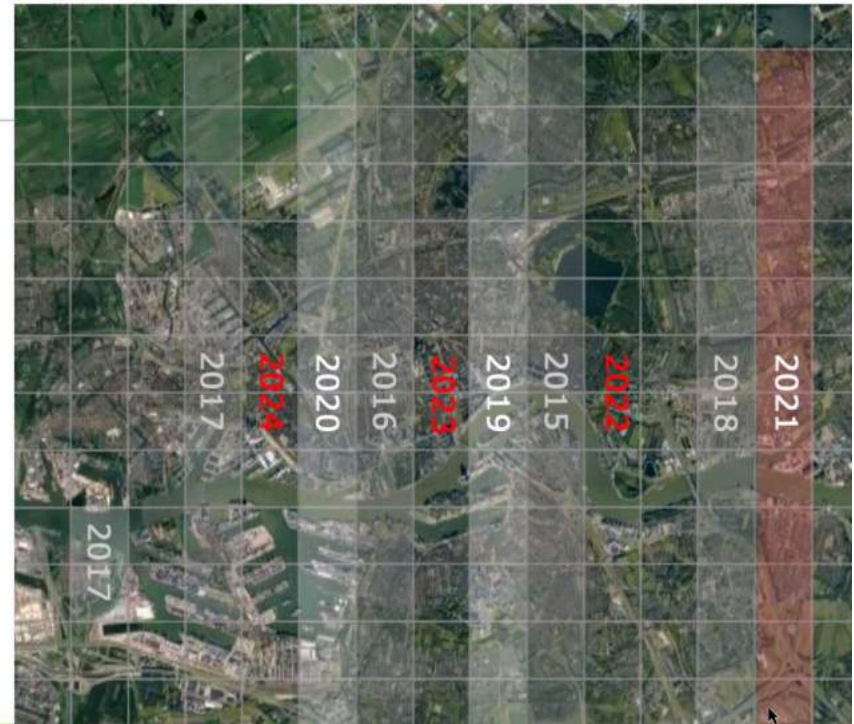
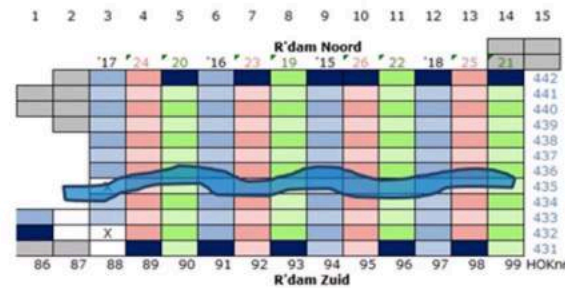
FLORAWERKGROEP ROTTERDAM

The Floron district of South Holland, of which our city is a part, has a fascinating and rich variety of landscapes and although you might immediately expect it, the urban area has a great diversity of species.

The average temperature is somewhat higher than in the rural areas due to the intensive traffic, all kinds of seeds and plant materials are supplied by trains, car tires and shipping.

We often find surprising species on many old walls and on the banks of the water.

2021 vegen of raai 98



FLORAWERKGROEP ROTTERDAM



Synonyms:

Family: Resedaceae (Reseda family)

Naming (Etymology): Reseda is derived from the Latin *resedo*, which is powerful from *re* (weather) and *sedare* (soothe or heal), for its supposed power against external bruises. *Lutea* means yellow.

Longevity: Biennial from perennial.

Plant form: Herb.

Winter buds: Hemikryptophyte.

Flowering months: June, July, August and September.

Size: 20-60 cm.

FLORAWERKGROEP ROTTERDAM



Synonyms:

Family: Asteraceae (Composite family)

Naming (Etymology): There are several explanations for the name. Artemisia could be descended from the Greek artemès (healthy), because of the many medicinal properties of the species of this genus. A second possibility is that the name is derived from the goddess of birth and women Artemis Eileythia (the plants were used in women's diseases). It has also been suggested that Artemis was named after Queen Artemisia of Halikarnassos in Caria, who had a famous mausoleum built for her husband. Biennis means biennial.

Lifespan: Annual.

Plant form: Herb.

Winter buds: Therophyte.

Flowering months: August, September, October and November.

Size: 30-150 cm.

Vegetation of urban wastelands

Rotterdam and the effect of human disturbance



Figure 1 The distribution of the different sites over the city of Rotterdam. The triangle (Δ) represents cluster one sites, sites from zone D and sites with four human activities (Map **a**, **b** and **c**, respectively). The pentagon (\square) represents cluster two, zone C and three human activities. The star (\star) represents cluster three, zone B and two human activities. The square (\square) represents zone A and one human activity (Map **b** and **c**, respectively).

Jorinde Sprong 1* & Jelle W.F. Reumer 2

1 Utrecht University, Department of Landscape-ecology 2 Natuurhistorisch Museum Rotterdam

CONCLUSION

- 1 Age, zonation and human activity have the highest explanatory value for the composition of the urban wasteland communities in Rotterdam.
- 2 There are several types of wasteland communities, and these communities are determined by the differences in abiotics of the sites.
- 3 Typical cosmopolitan species as well as typical urban species were found on the wastelands of Rotterdam.
- 4 The sites follow the concentric model. Sites towards the periphery of the city have the lowest amount of human activities. The youngest sites are situated in the centre, as the recycling rate of wastelands is faster in the centre and decreases towards the outskirts.

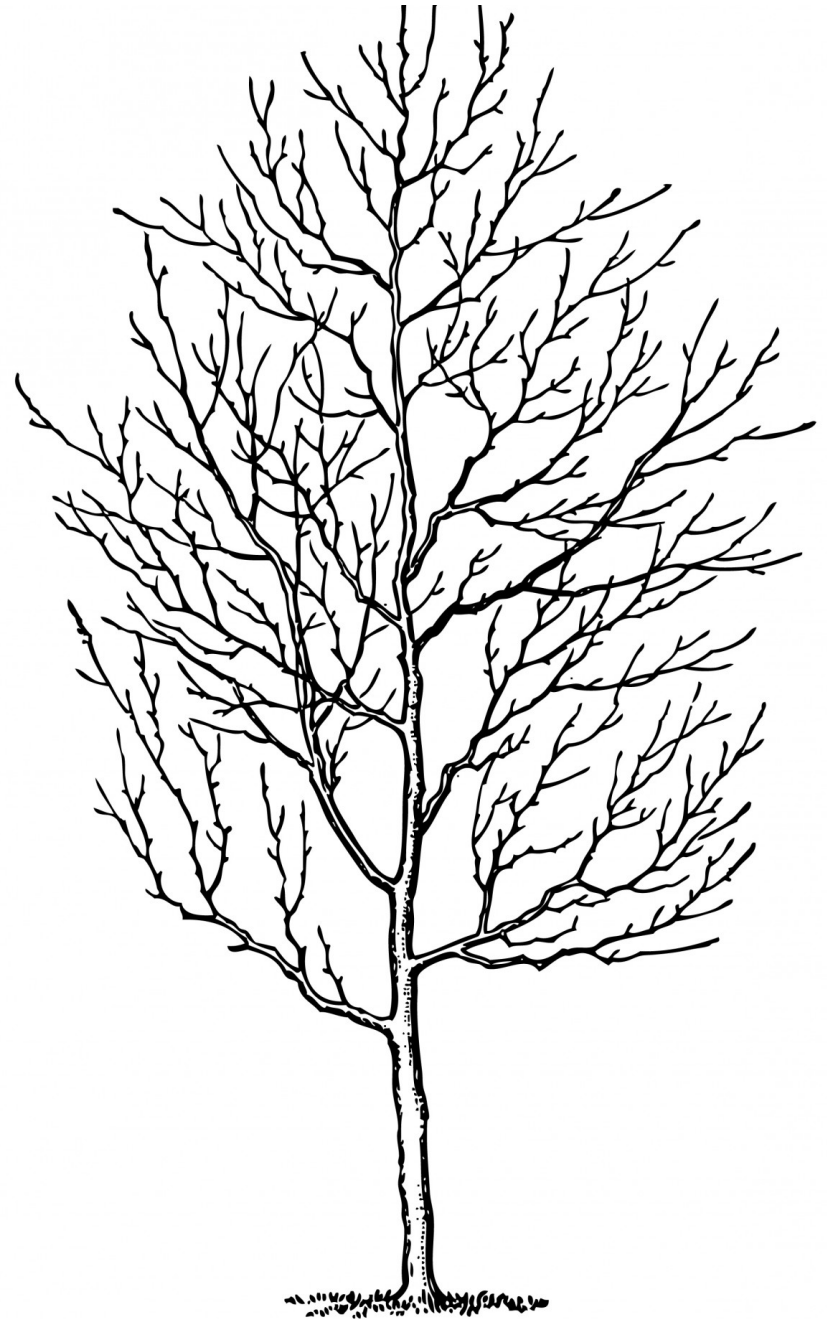
SCALE



SMALL



MEDIUM



BIG

INTERVENTIONS

- Removing brick and cement to let small plants grown on the wall.
- Use the the bricks for small piles where different kind of plants can grow on.



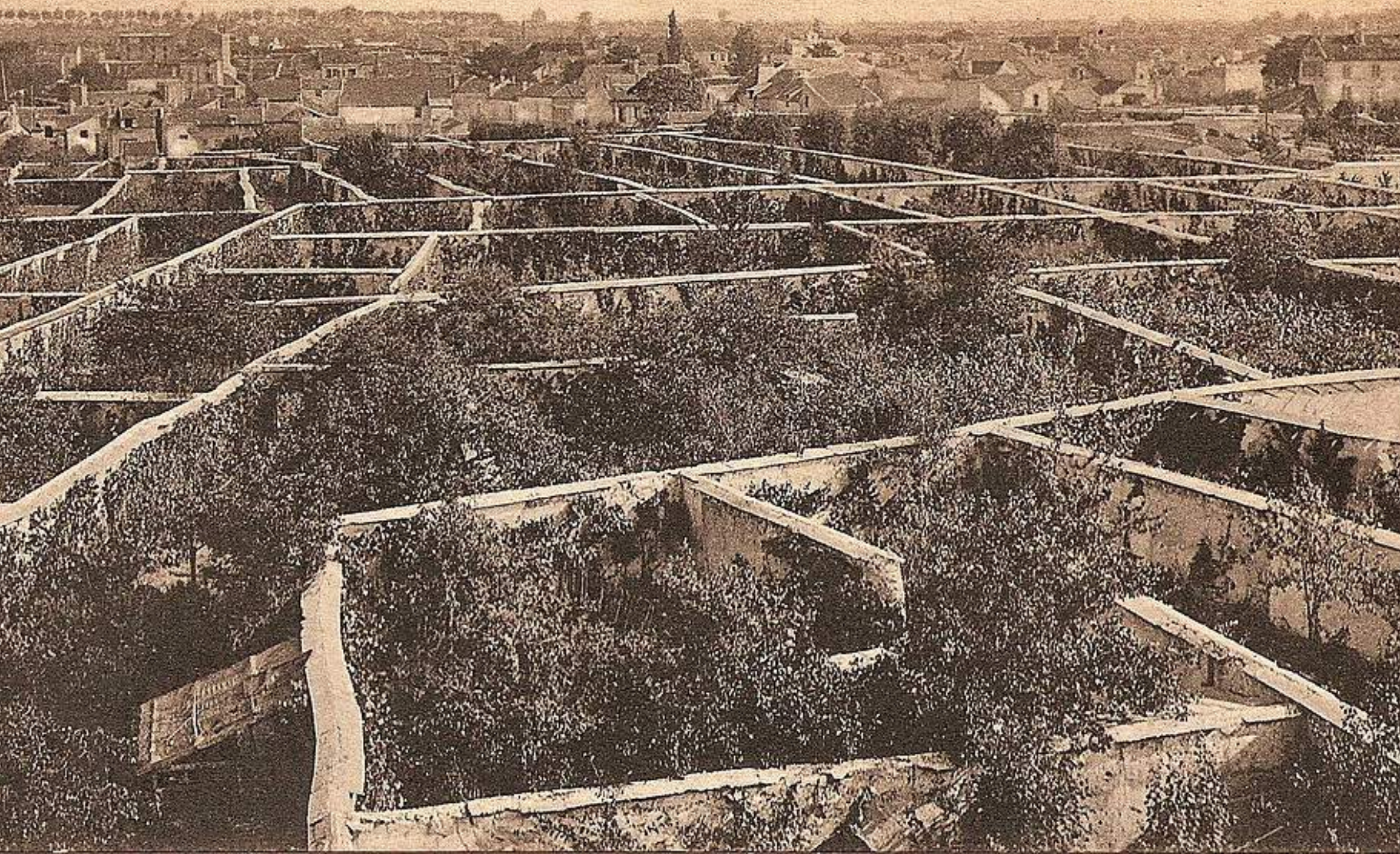
- bigger removals in the floor of the cinerama and courtyard. So bigger bushes can grow there.



- Opening up the roof for rain and sunlight fall in so plants can grow in the Cinerama.
- remove some seats and create and make room for bigger trees to grow there.

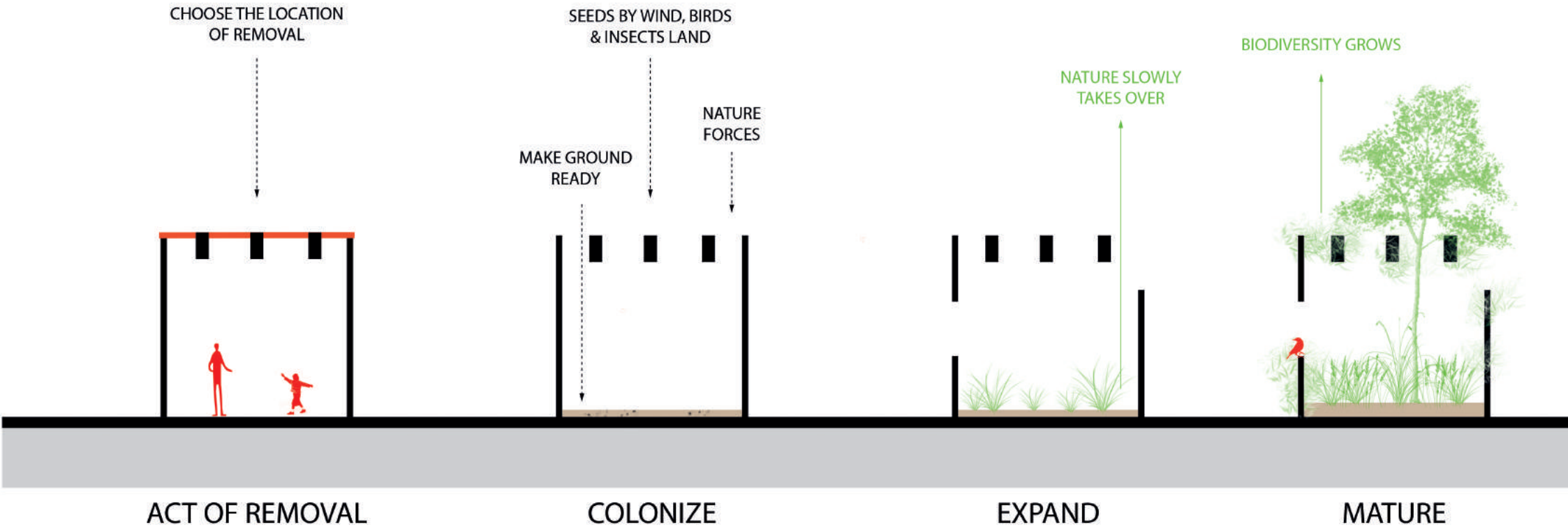


939. MONTREUIL-sous-BOIS - Le Clos des Pêches E. M.

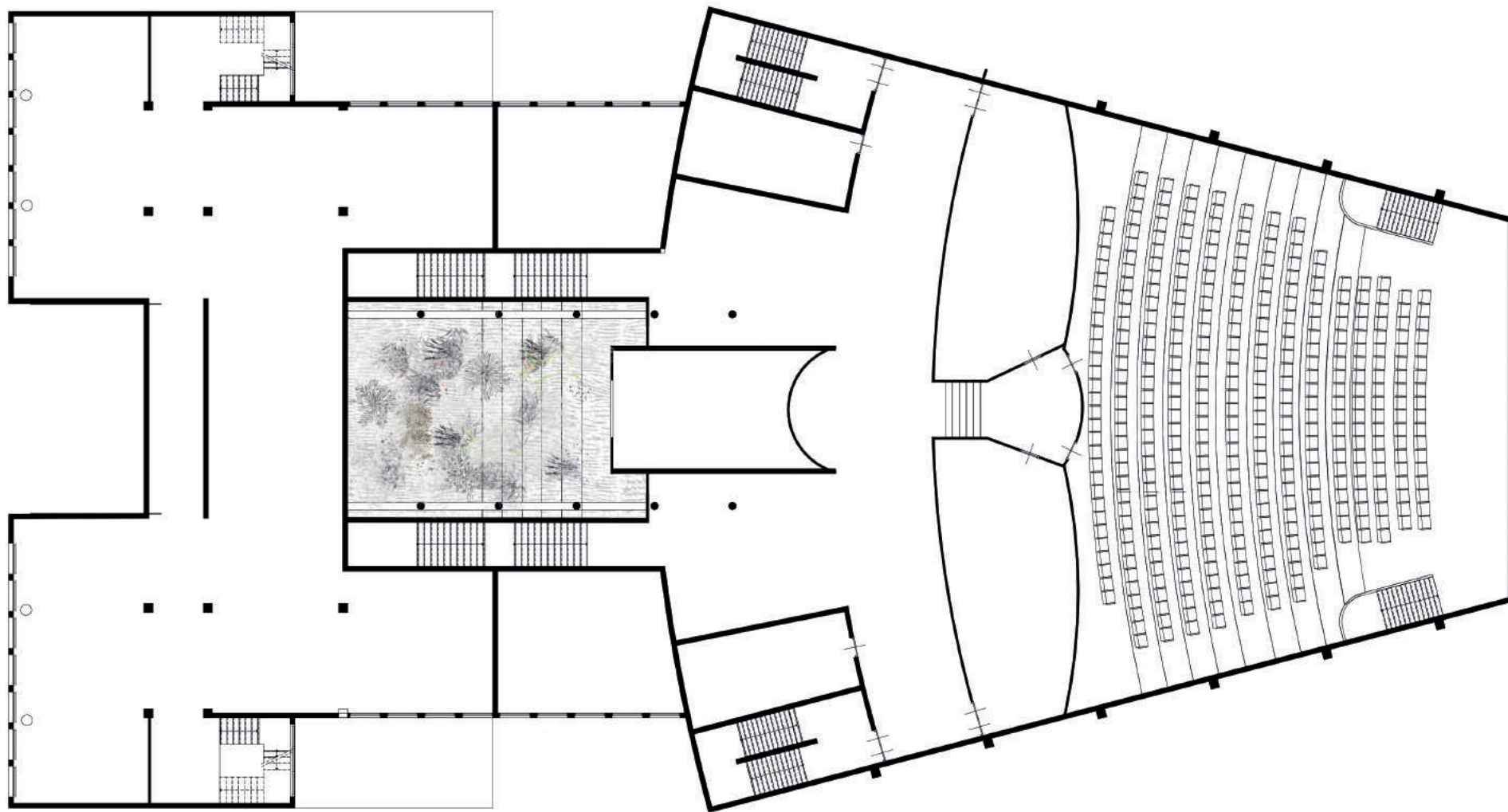


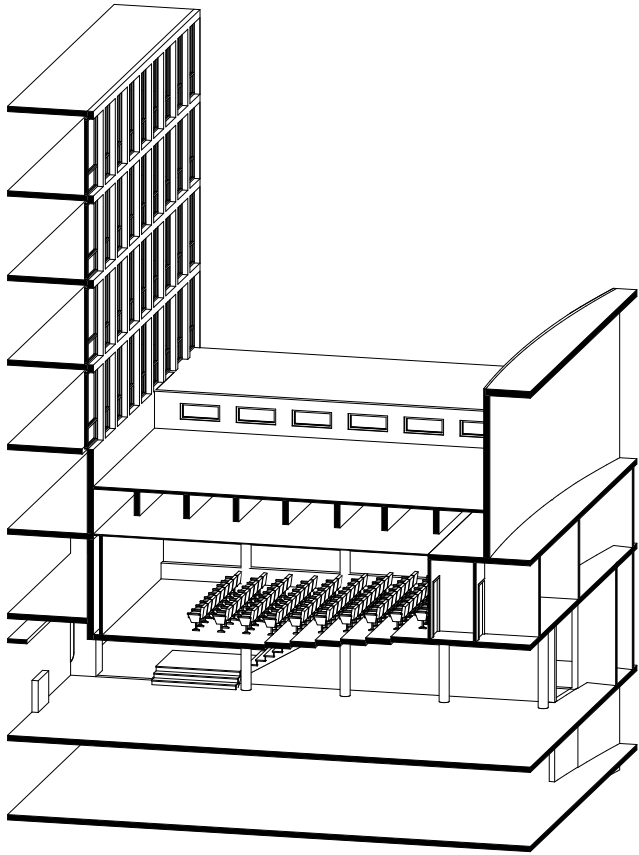
MIDTERM 02.

METHOD

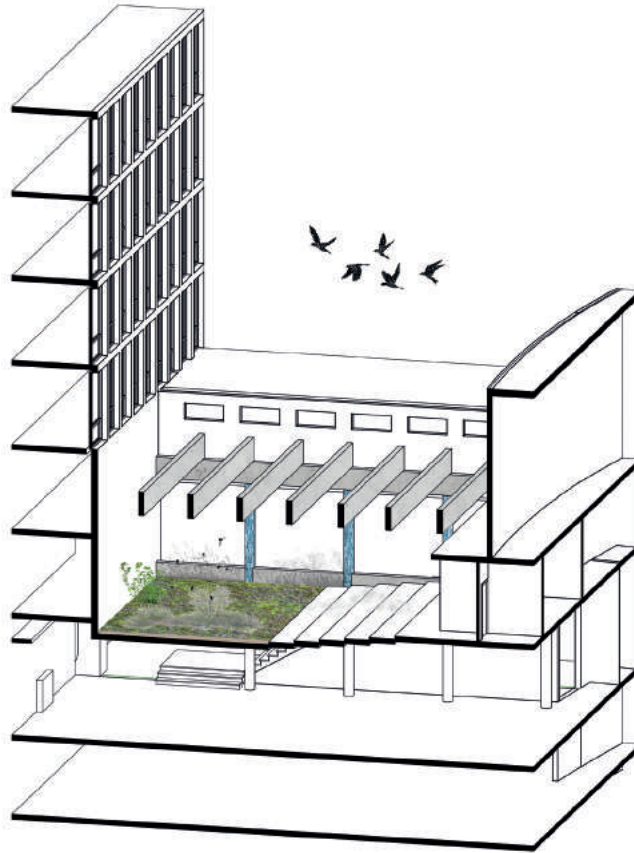


PLAN

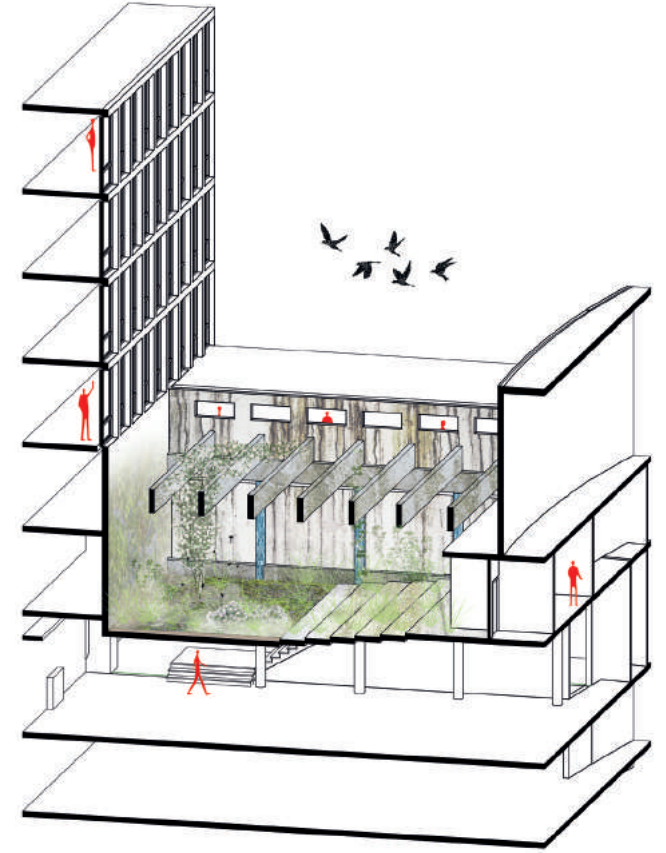




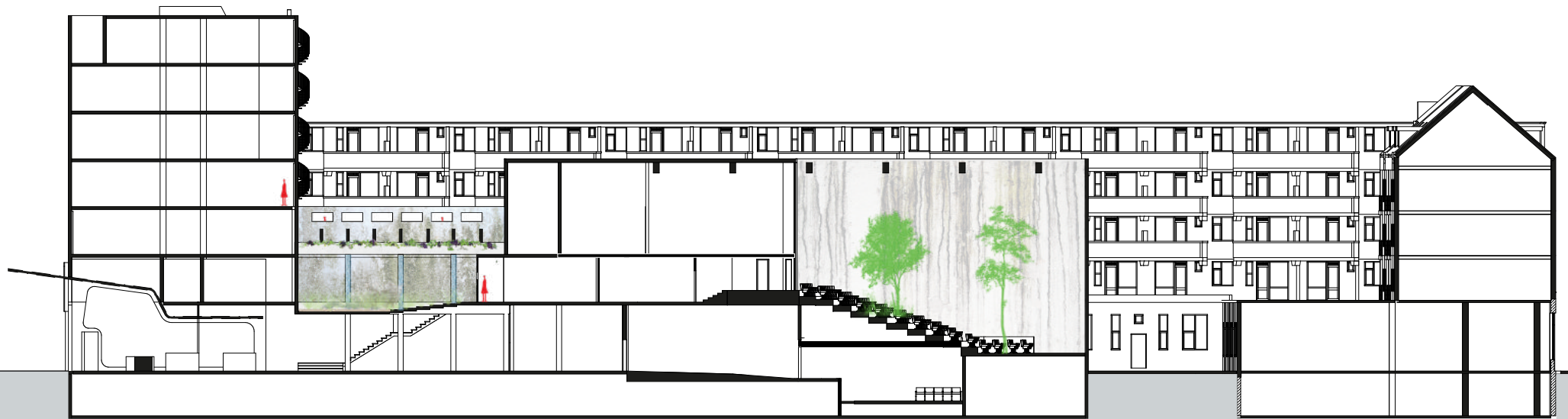
EXISTING

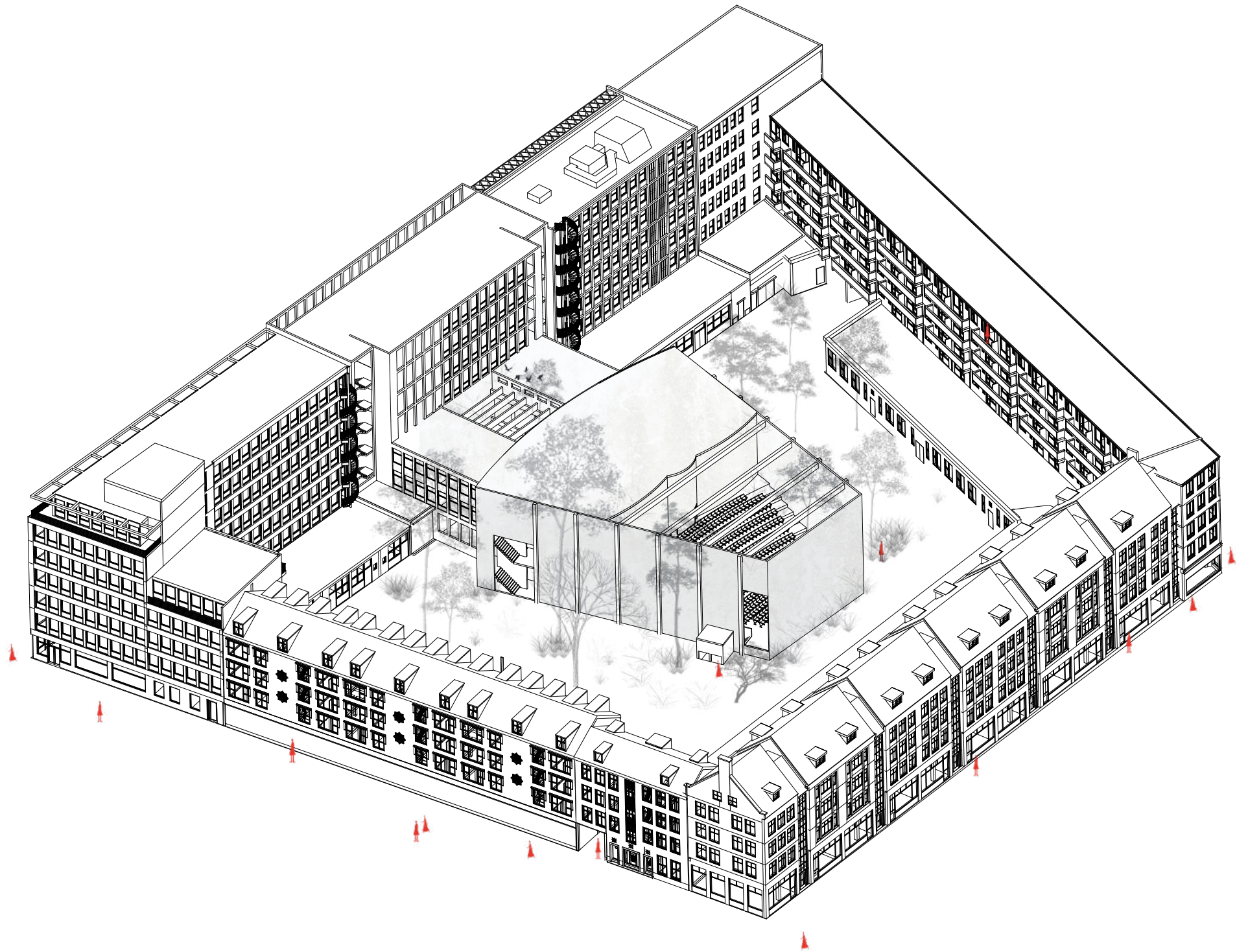


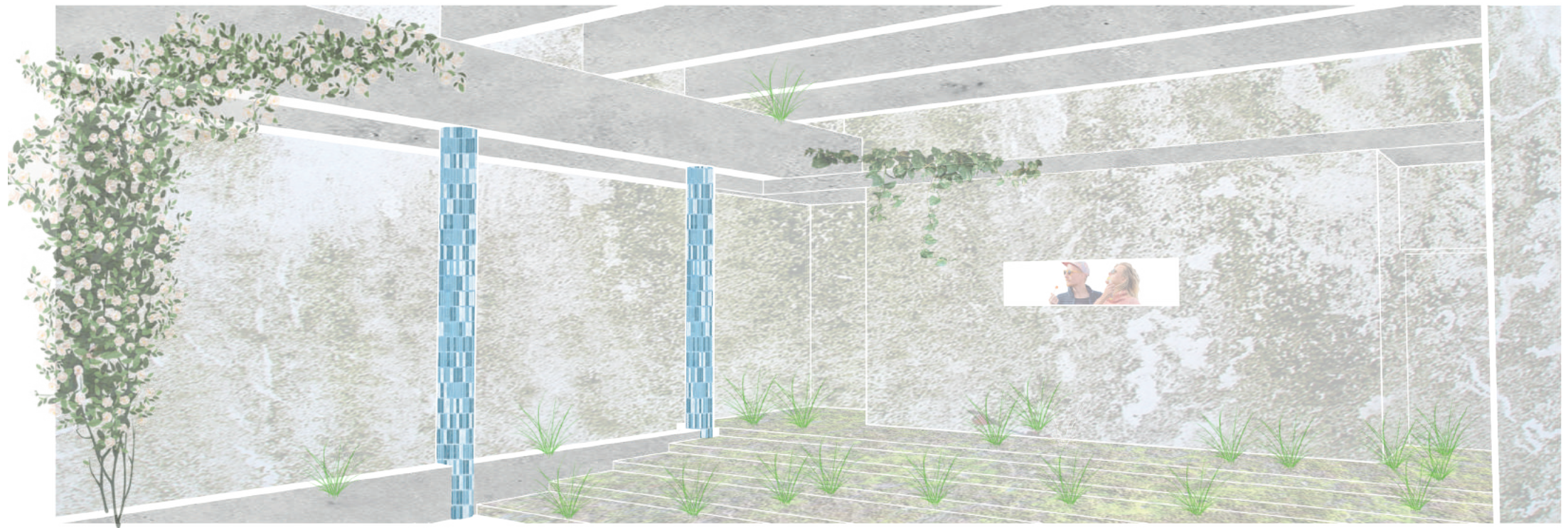
NEAR FUTURE



FAR FUTURE







“MAKING ROOM FOR NATURE”

REFERENCE PROJECTS



Team.breathe.austria - World Expo - Milano
2015

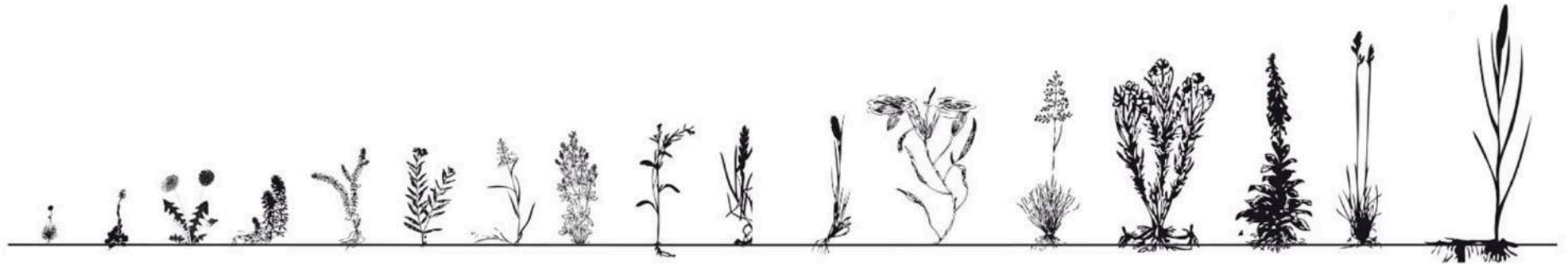


Unknown



2pm Architekci - World Expo - Milano
2015

PLANT RESEARCH



Epilobium angustifolium
Wilgenroosje



Typha latifolia
Grote Lisdodde



Digitalis purpurea
Vingerhoedskruid



Achillea millefolium
Duizendblad



Salix nigra
Zwarte wilg



Lolium perenne
Raaigras

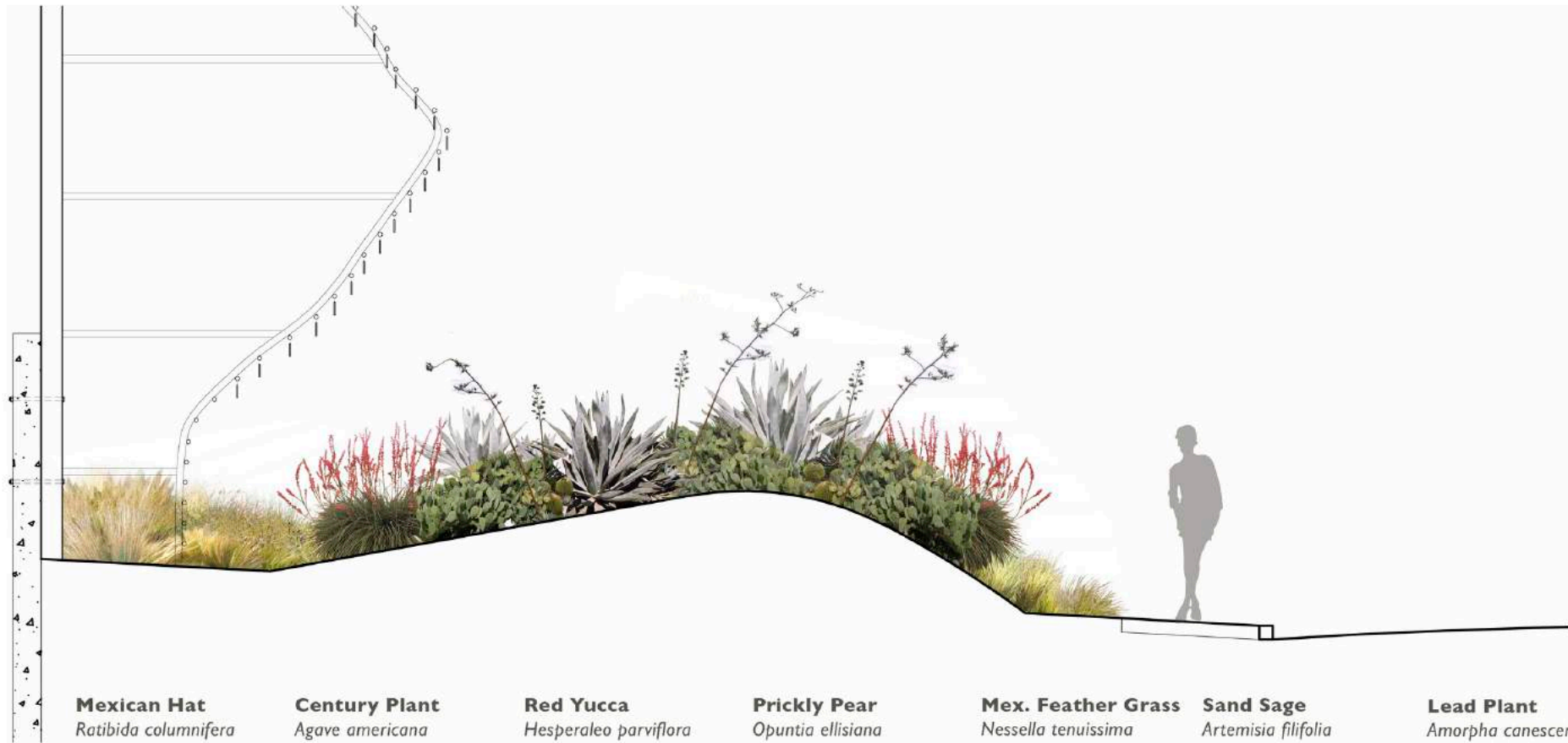


Agrostis capillaris
Struisgras



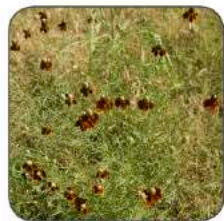
Festuca arundinacea
Rietzwenkgras

PLANT RESEARCH



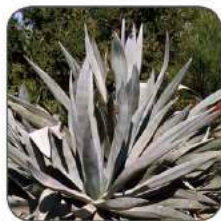
Mexican Hat
Ratibida columnifera

Light: High; Heat Tolerant
Soil: Tolerant
Water: Dry
Height: 1 to 2 ft.



Century Plant
Agave americana

Light: High; Heat Tolerant
Soil: Tolerant
Water: Dry
Height: 1 to 6 ft.



Red Yucca
Hesperaleo parviflora

Light: High; Very Heat Tolerant
Soil: Adaptable
Water: Dry
Size: 3 to 4 ft.



Prickly Pear
Opuntia ellisiana

Light: High; Heat Tolerant
Soil: Tolerant
Water: Dry
Size: 4 to 5 ft.



Mex. Feather Grass
Nessella tenuissima

Light: High; Heat Tolerant
Soil: Tolerant; Well Drained
Water: Dry
Size: 1 to 2 ft.



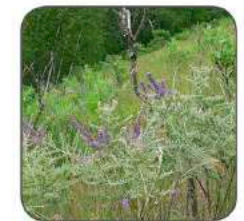
Sand Sage
Artemisia filifolia

Light: High; Very Heat Tolerant
Soil: Adaptable
Water: Dry
Height: 3 to 4 ft.



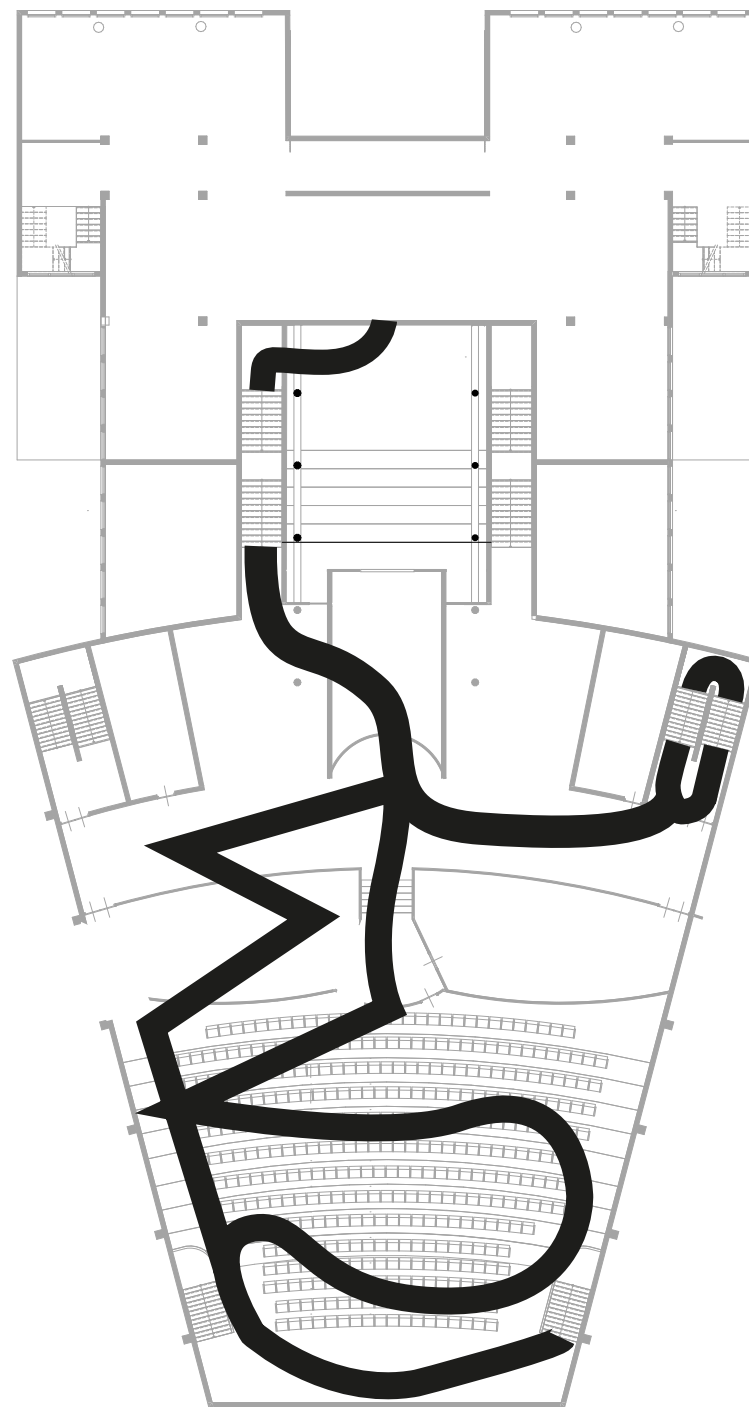
Lead Plant
Amorpha canescens

Light: High; Heat Tolerant
Soil: Neutral
Water: Dry
Height: 2 to 3 ft.



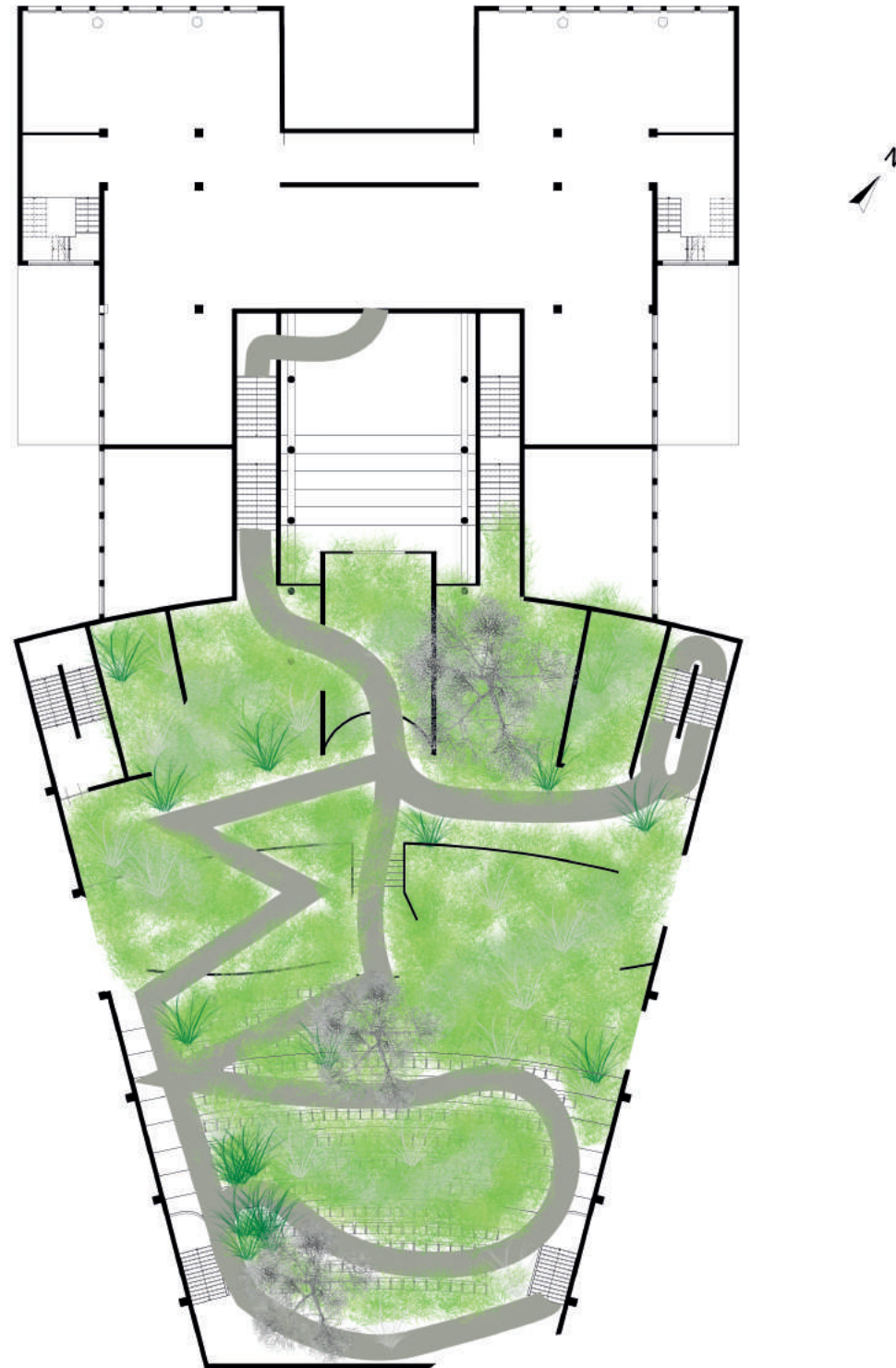
ACCESSIBILITY

ROUTE (STILL RANDOM)



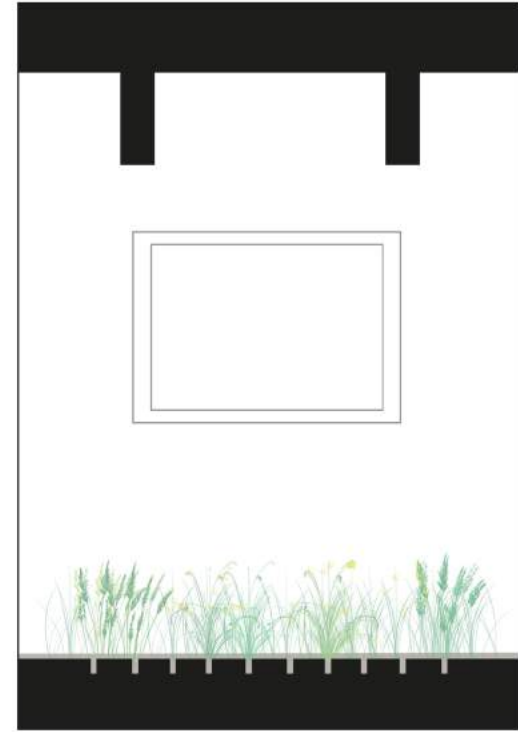
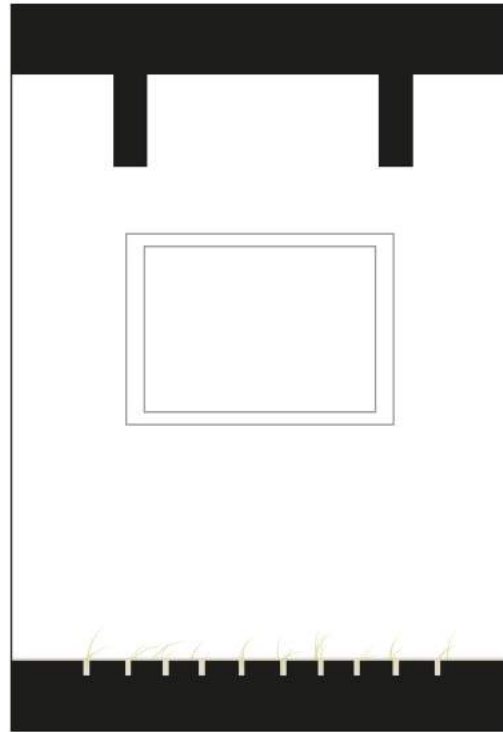
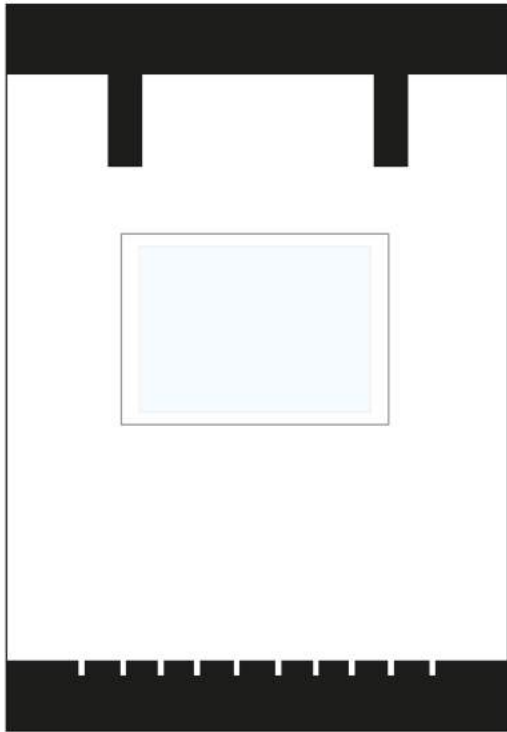
ACCESSIBILITY

GROWING



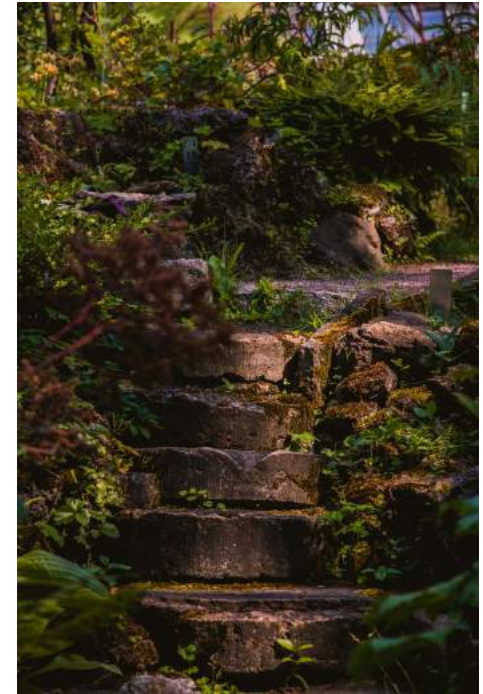
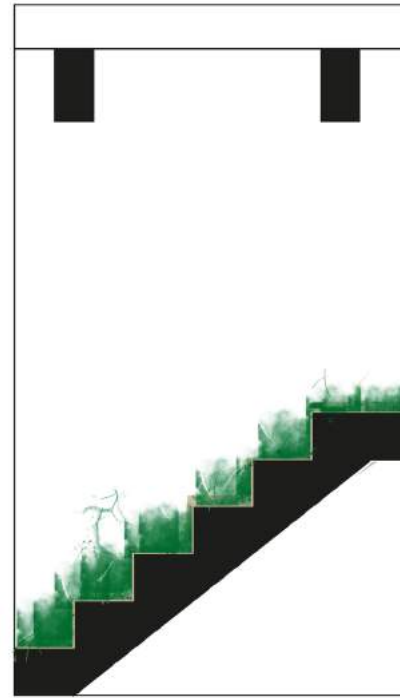
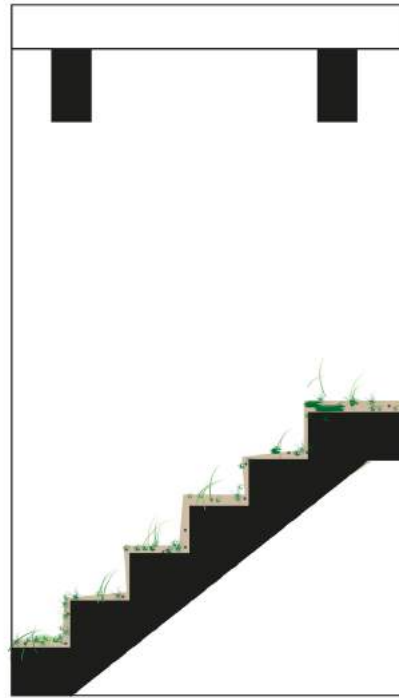
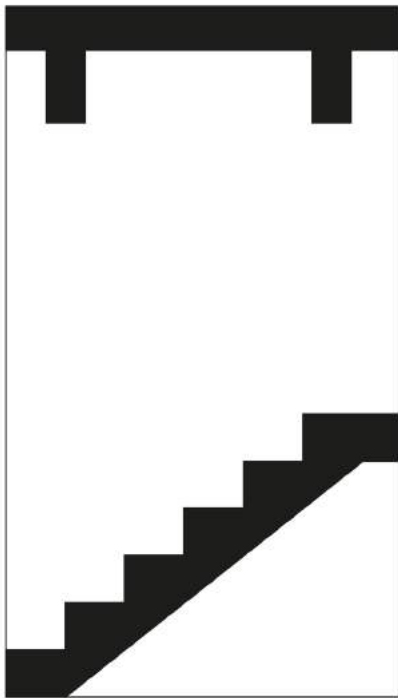
ACTIONS

DRILLING HOLES / MAKING CRACKS



ACTIONS

REMOVING THE ROOF

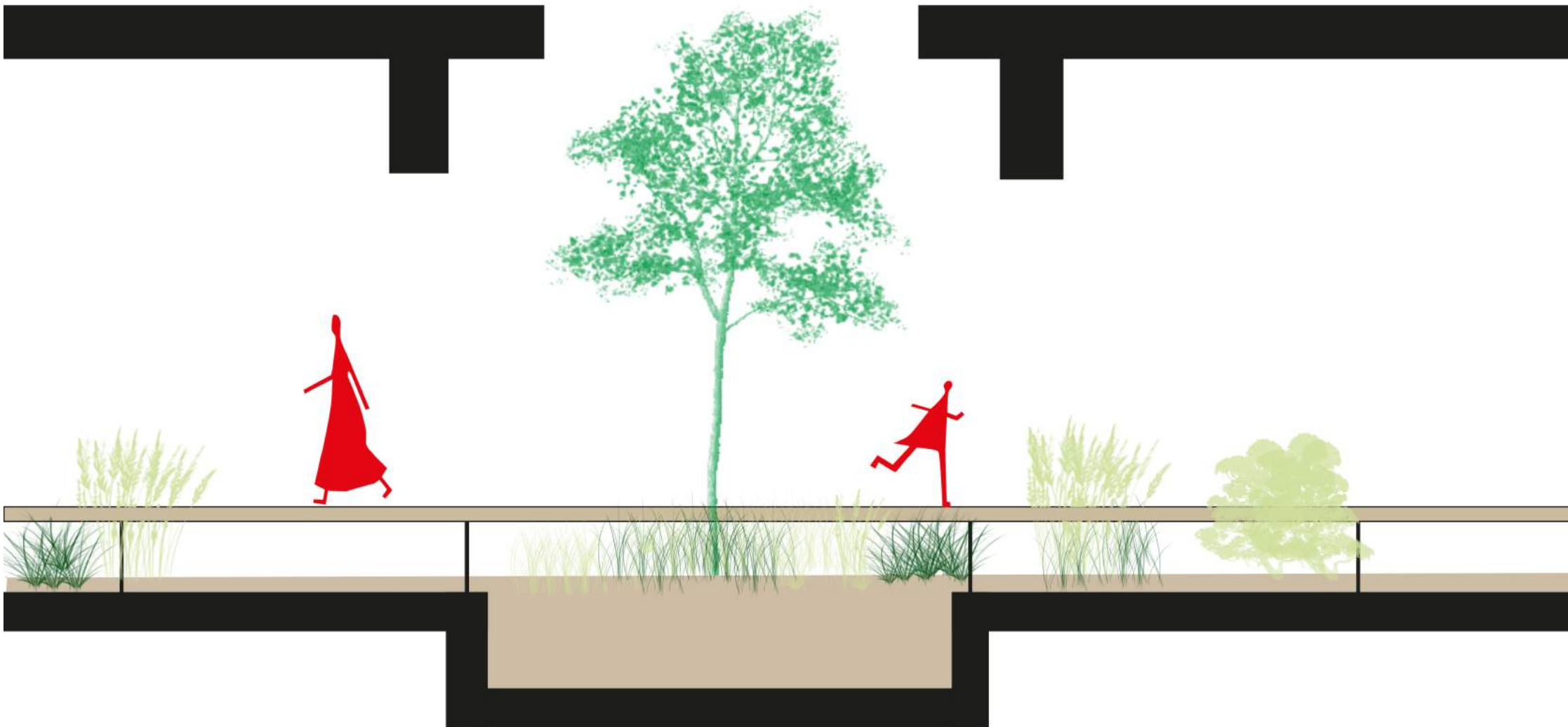


ACTIONS

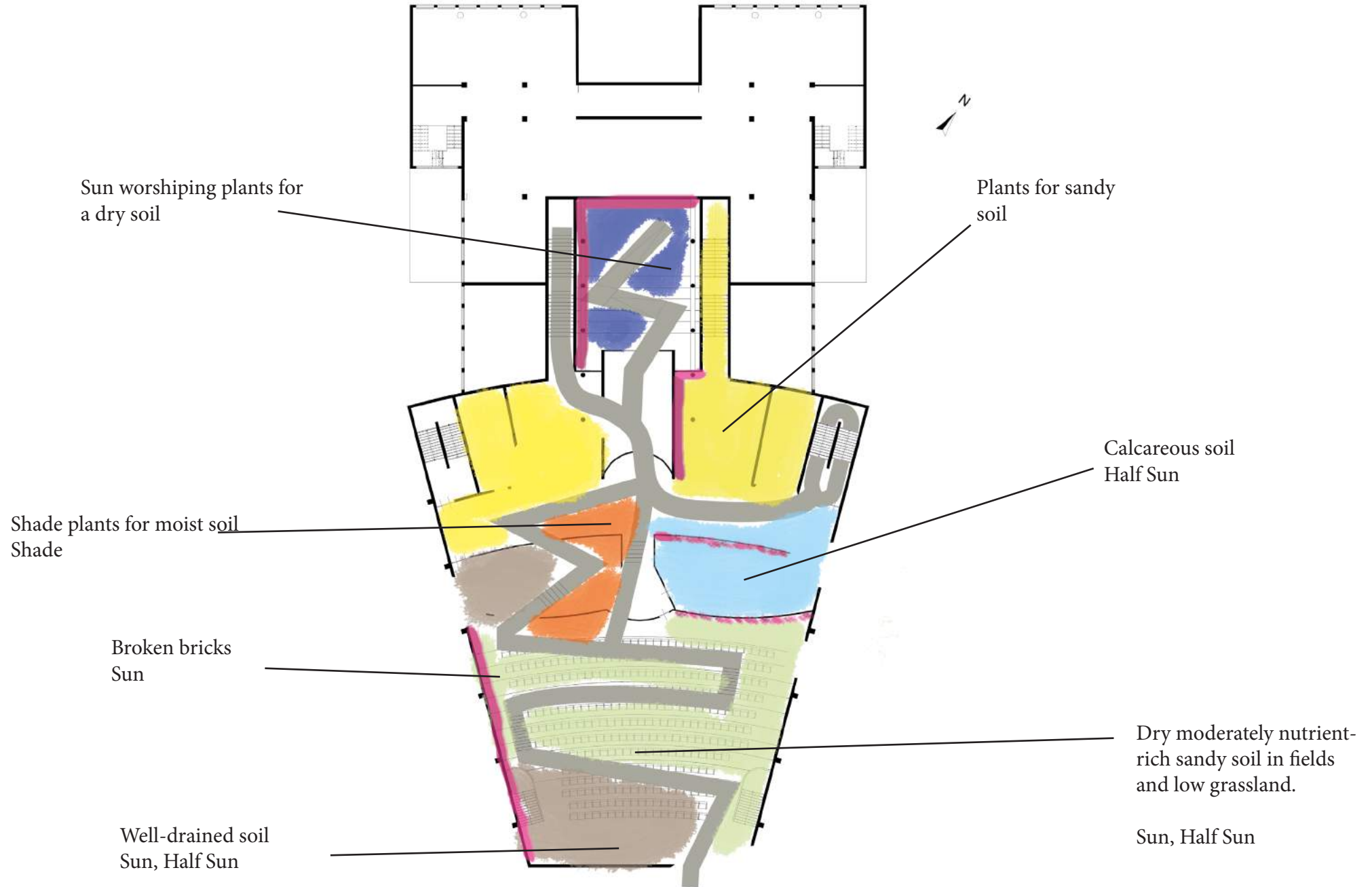
BREAKING BRICKS AND REMOVING CEMENT



SECTION



SOIL TYPE



REMOVE

W I N D O W S
I N S T A L L A T I O N S
C H A I R S
S T U C C O
C E M E N T
W O O D
R O O F
W A L L S
F L O O R S
I N T E R I O R

USE

C O N C R E T E
B R I C K S
W O O D
C O N S T R U C T I O N

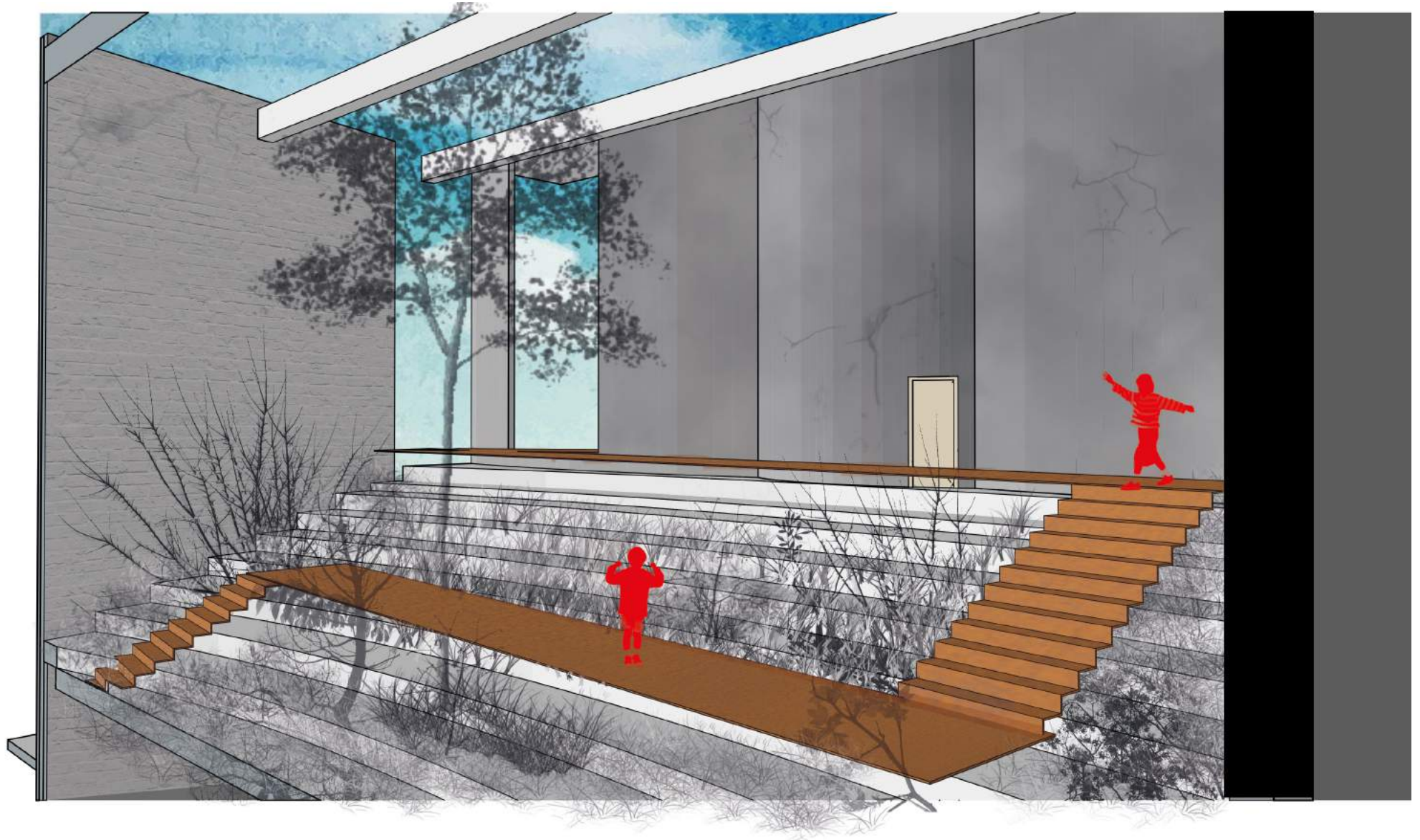
ADD

W A T E R
S O I L
S E E D S

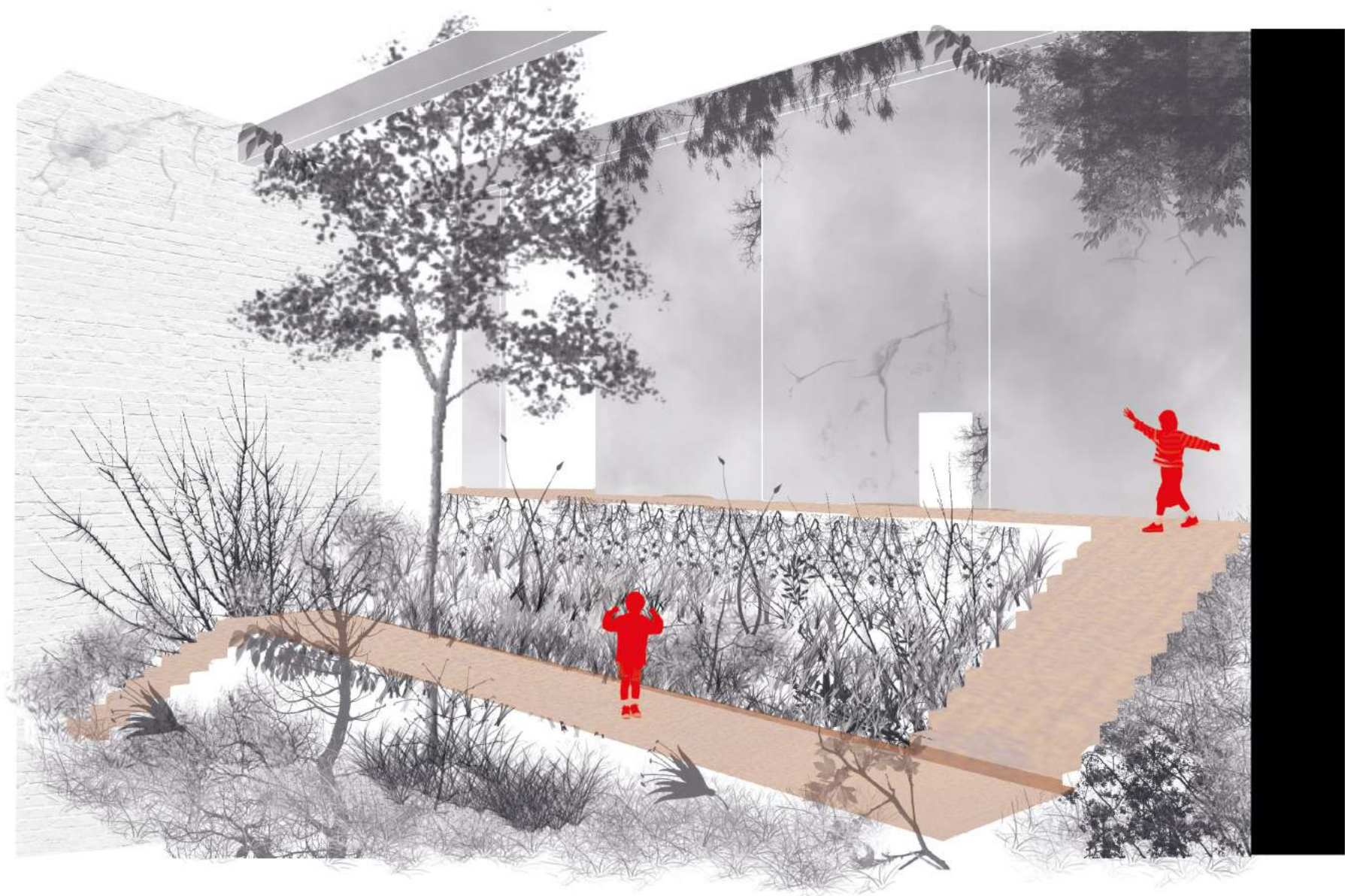
PLATFORM



PLATFORM



PLATFORM



REFERENCE PROJECTS



SCHIEDAMSE VESTHOF



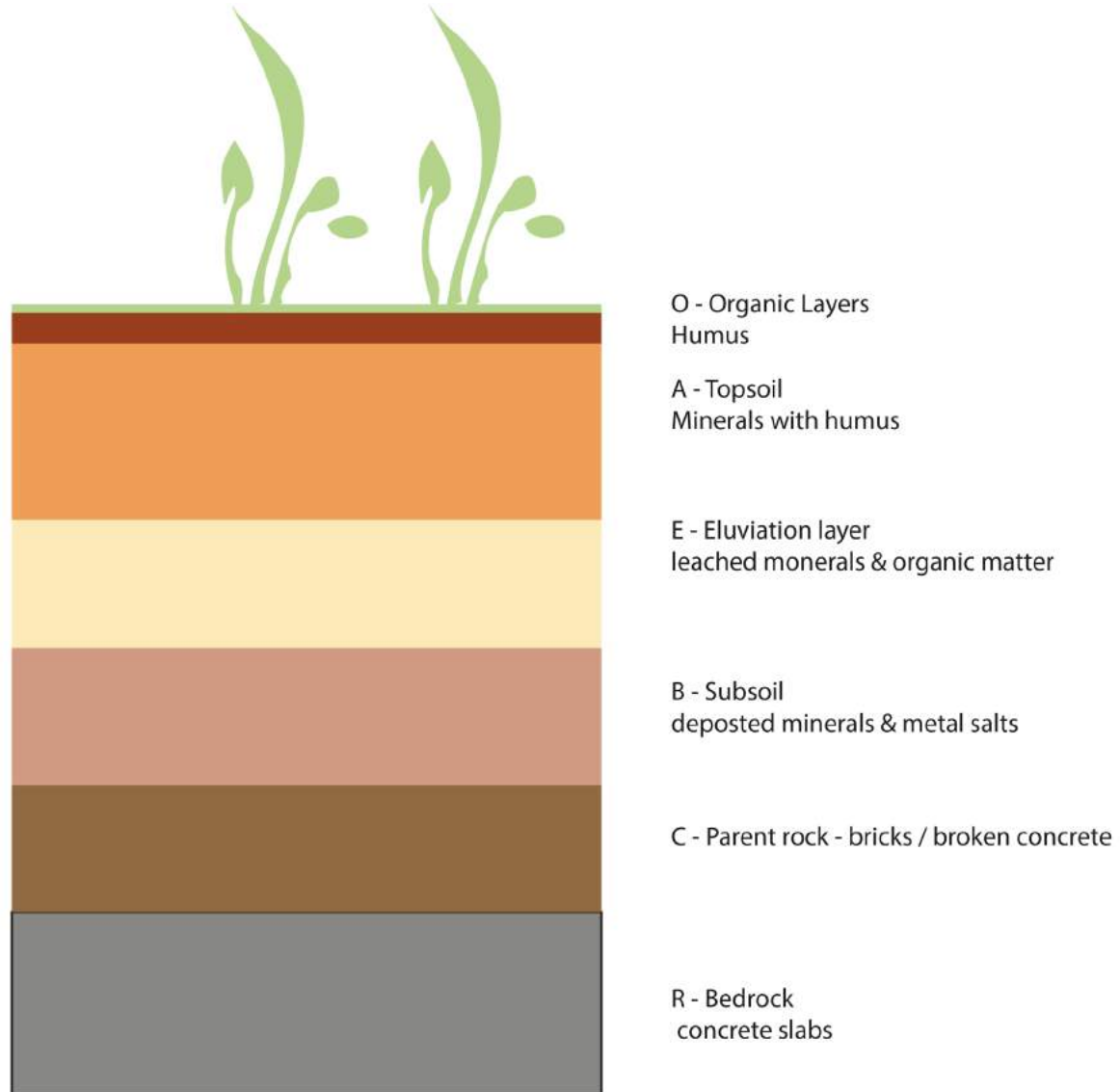
BART-JAN VAN WIJK



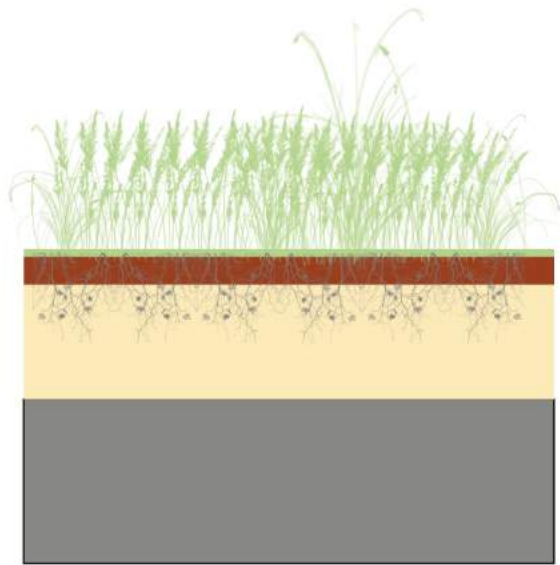
RAVB

LAYERS OF GROUND & METHOD OF PLANTING

ADDING SOIL LAYERS FOR PERFECT
CONDITIONS FOR DIFFERENT
KIND OF PLANTS OR TREES



LAYERS OF GROUND & METHOD OF PLANTING

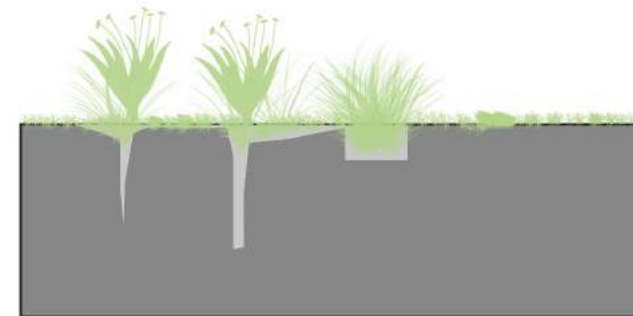


O - Organic Layers
Humus

A - Topsoil
sand

R - Bedrock
concrete slabs

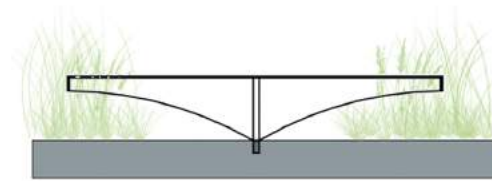
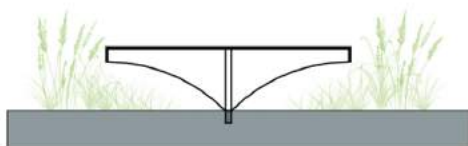
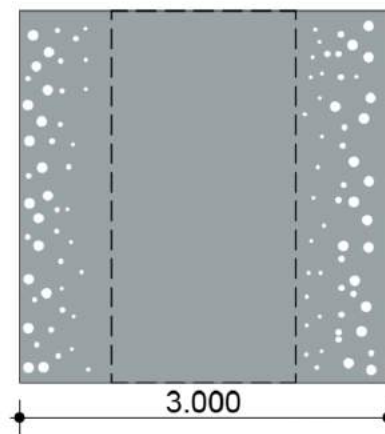
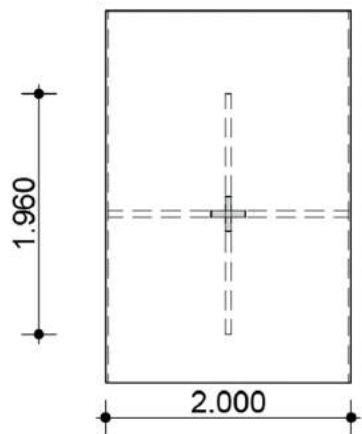
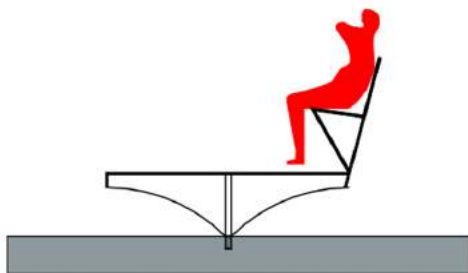
ADDING DIFFERENT LAYER OF SAND
FOR PLANTS THAT NEED DRY SOIL



R - Bedrock
concrete slabs

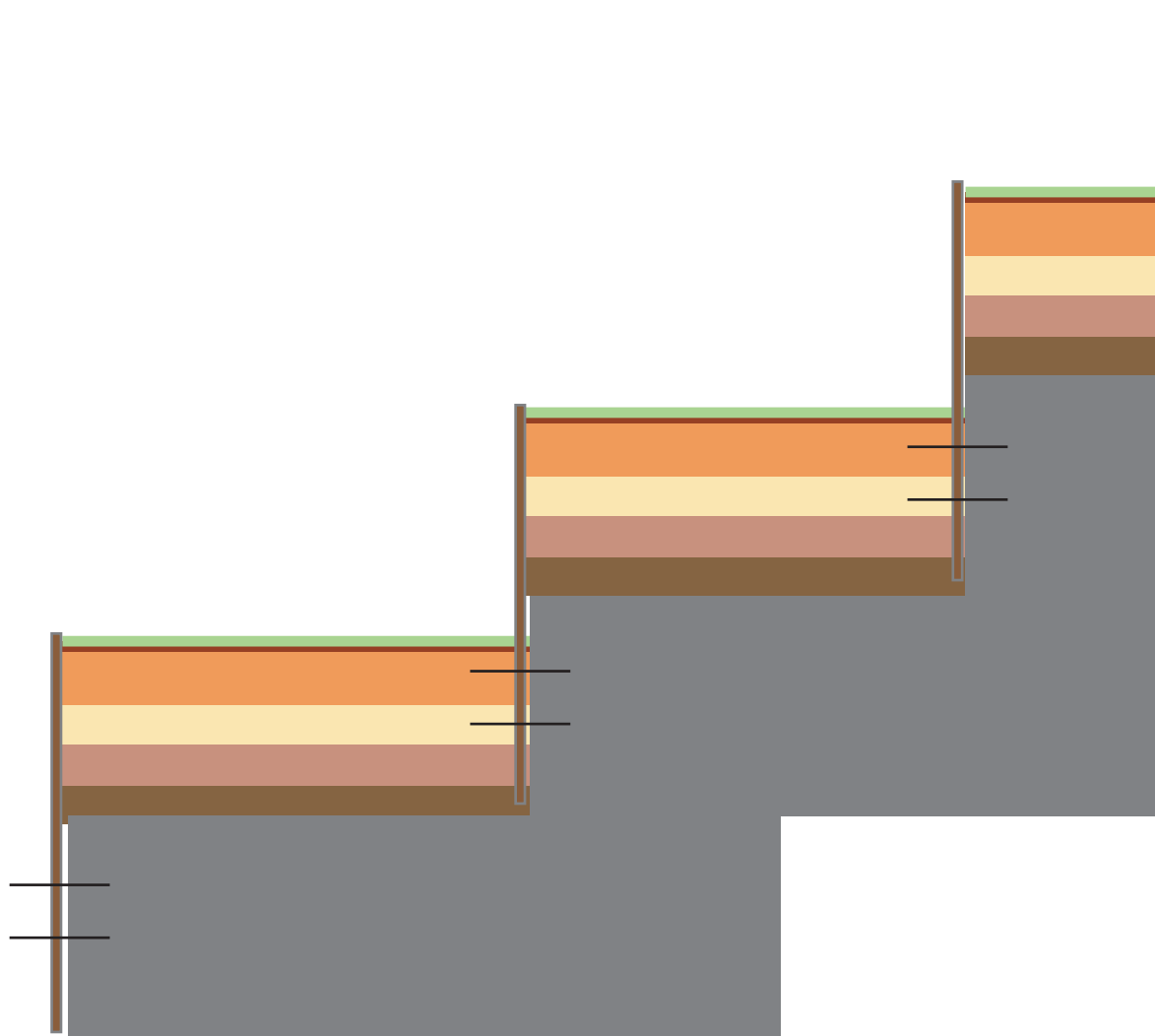
DRILLING IN CONCRETE TO CREATE GAPS.
FOR SMALLER MOSSES AND GRASSES.

PLATFORM





STAIRS



FINAL

