

CLAIM SPACE

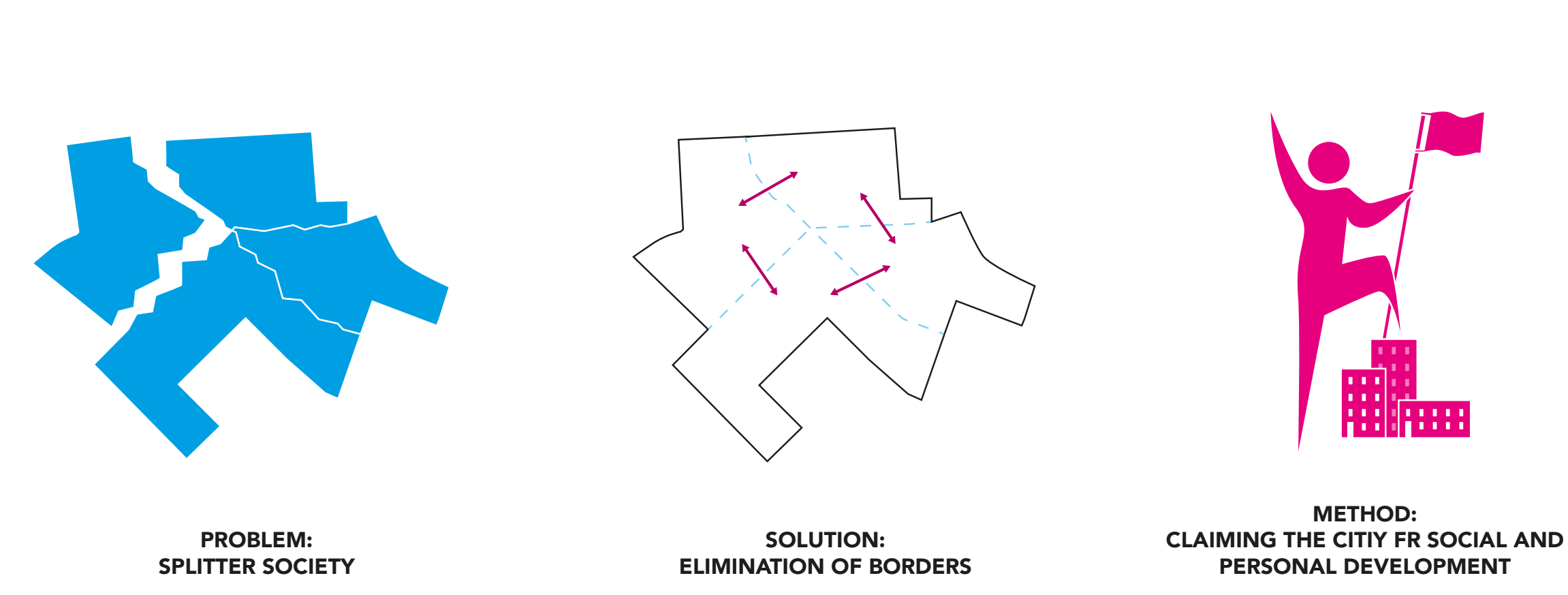
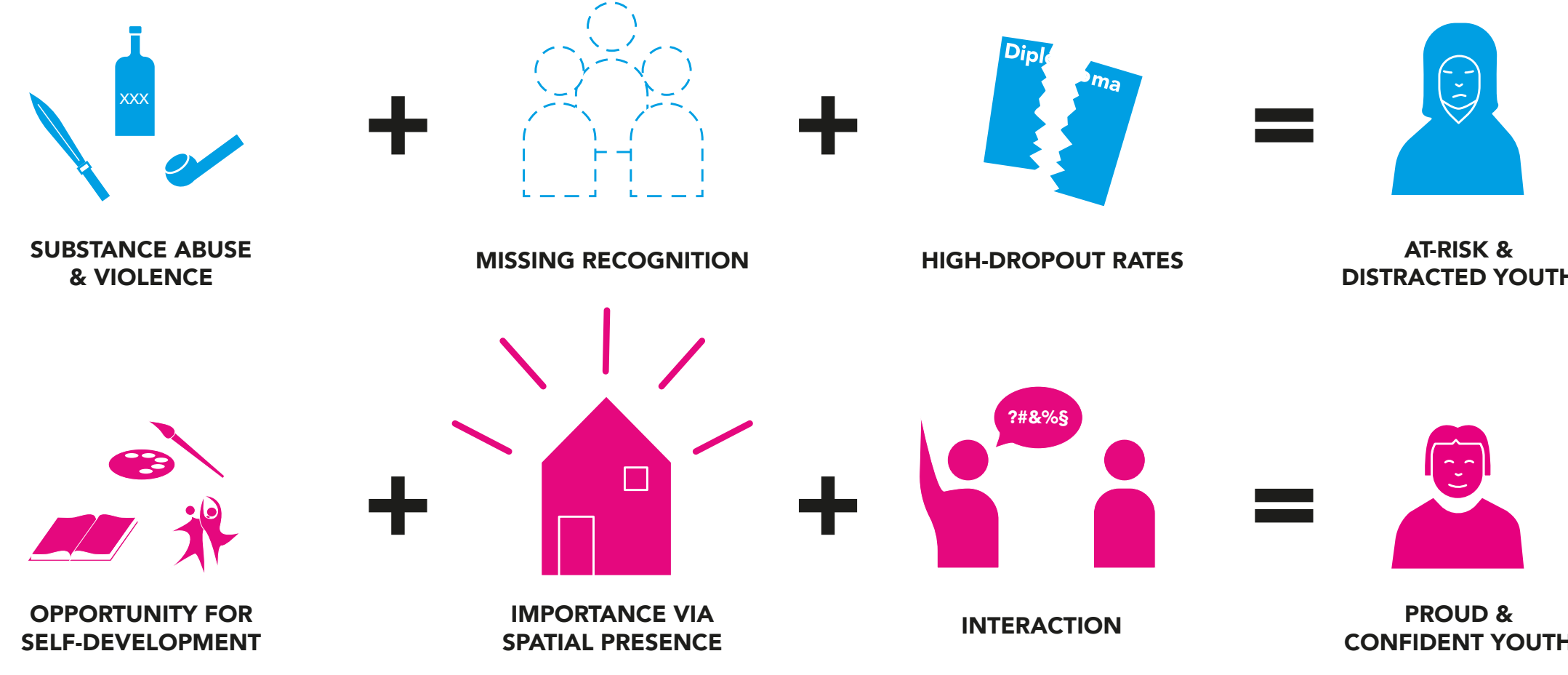
PROVIDE EQUALLY ACCESSIBLE SPACE IN TODAY'S COMMUNITIES FOR THE YOUTH TO LEARN, ENJOY AND CLAIM. TO TAKE OWNERSHIP, LEARN ABOUT RESPONSIBILITY AND TO EMPOWER.

[...] TWELVE THROUGH EIGHTEEN. THIS WAS THE ABYSS WHERE, UNGUIDED, BLACK BOYS WERE SWALLOWED WHOLE, ONLY TO RE-EMERGE ON STREET CORNERS AND PRISON T I E R S .

TA-NEHISI COATES, AUTHOR AND ACTIVIST

PROBLEM STATEMENT

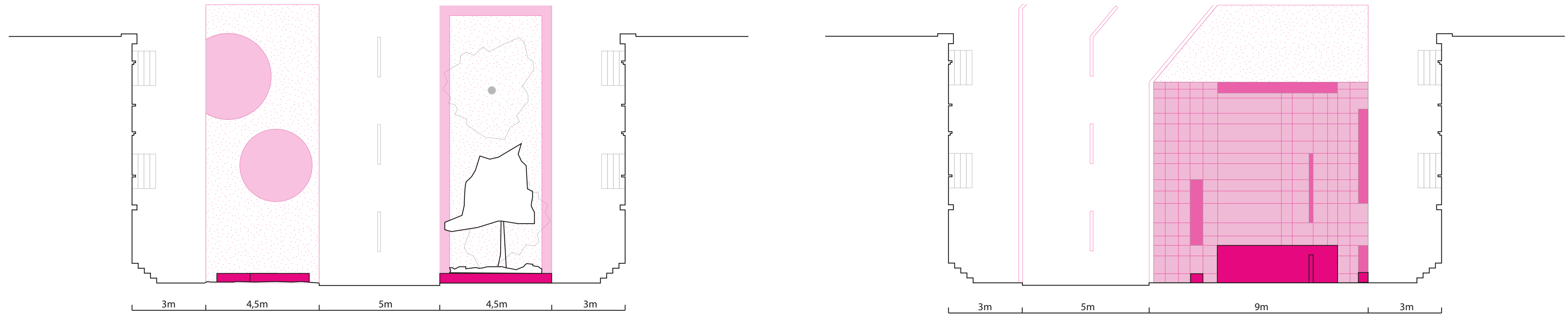
The residents of West Baltimore have suffered for decades under systematic and political neglect and discrimination. Redlining and its' aftermath strongly impacted the affected areas and its' locals - economically, socially and institutionally. Due to the need for self-preservation within a political system that has lost interest in providing equal access to all of it's participants, violence and substance abuse arose. Along others, the neighborhood of Pigtown transformed (whilst socially strong within itself) into a hostile, dangerous physical environment, that prohibits a healthy development and thriving already at a young age. The local youth is largely stigmatized and deprived. Little funding and opportunity for self-actualization, in connection with the negative influence of the environment, creates a large barrier for the youth to develop into proud, creative and pro-active adults. In order to make Baltimore a city that is more just, this inequality and inequity needs to be minimized - if not eliminated.



URBAN INTERVENTION

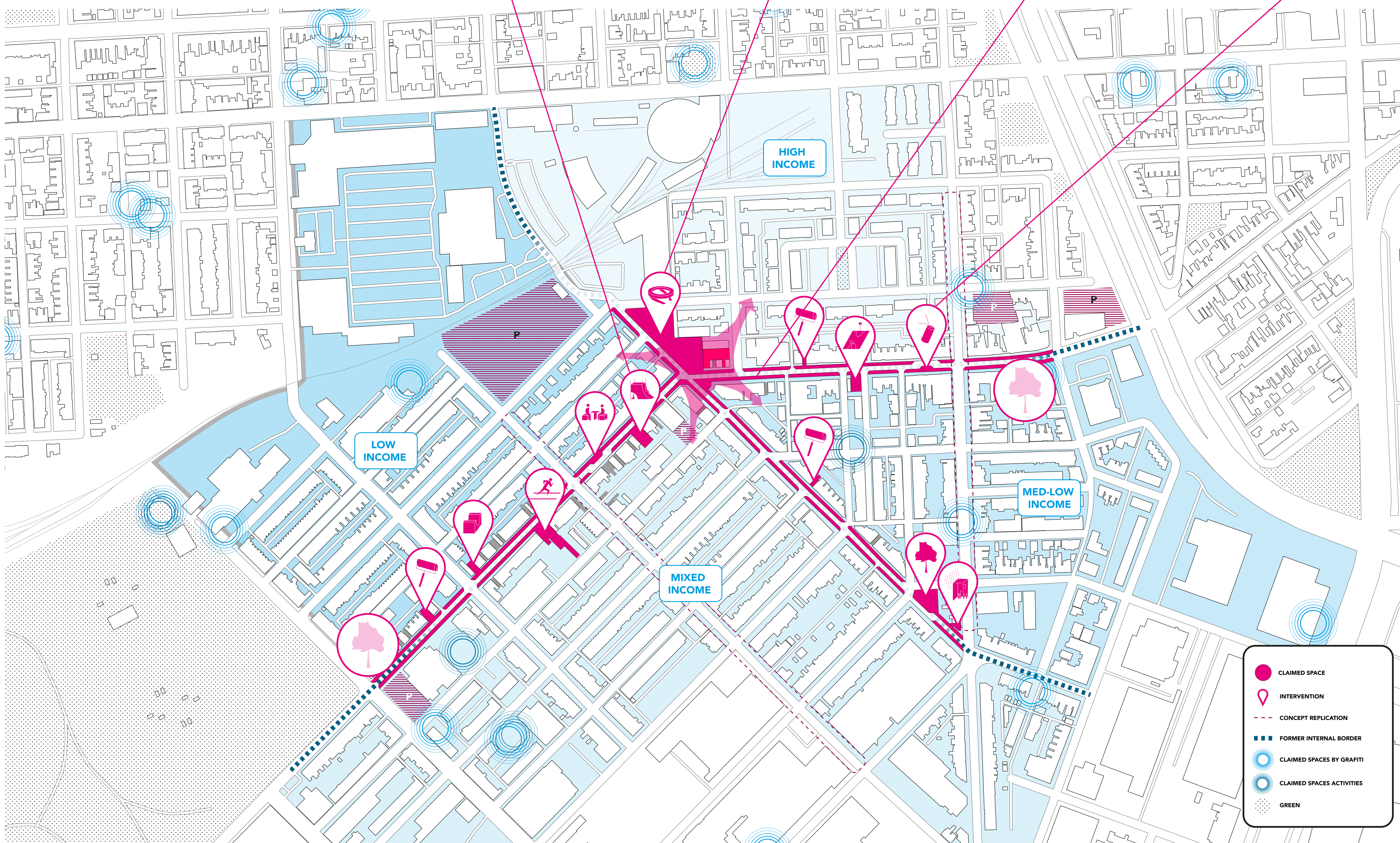
The socio-economical borders within Pigtown, West Cross St and Washington Boulevard, are transformed into spaces of encounter, social interaction and play, tackling the two largest urban problems at hand: the split society and the immense lack of recreational space.

The axes are claimed by the youth for a more livable city. A large part of the car lanes gives way to green strips, seating areas and folies that suggest lingering. With the new CLAIM SPACE complex, situated at the intersection of the two, a base station for the development of appropriable spaces along the streets, is set.



Via the work-force of the youth (generating student jobs), the initiative tackles blight in the area and transforms it into useful program for the residents.

- EXISTING
- RESEARCH
- NEW



- CLAIMED SPACE
- INTERVENTION
- CONCEPT REPLICATION
- FORMER INTERNAL BORDER
- CLAIMED SPACES BY GRAFFITI
- CLAIMED SPACES ACTIVITIES
- GREEN

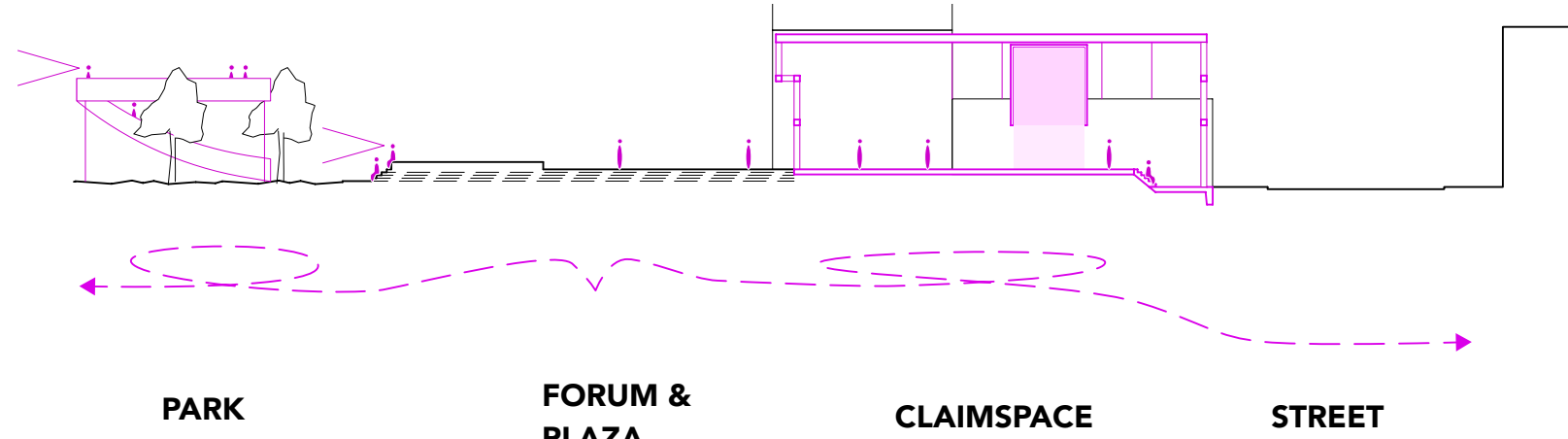
ARCHITECTURAL INTERVENTION

The CLAIM SPACE building provides space for study, leisure and skill development. It consists of a compilation of suggestive spaces that are then appropriated by the youth for their school, personal and collective projects. It uses the prominence of Washington Boulevard and its' intersection with West Cross St to physically put youth development into focus, allow a close interaction with the neighborhood and be of equal access to everybody.

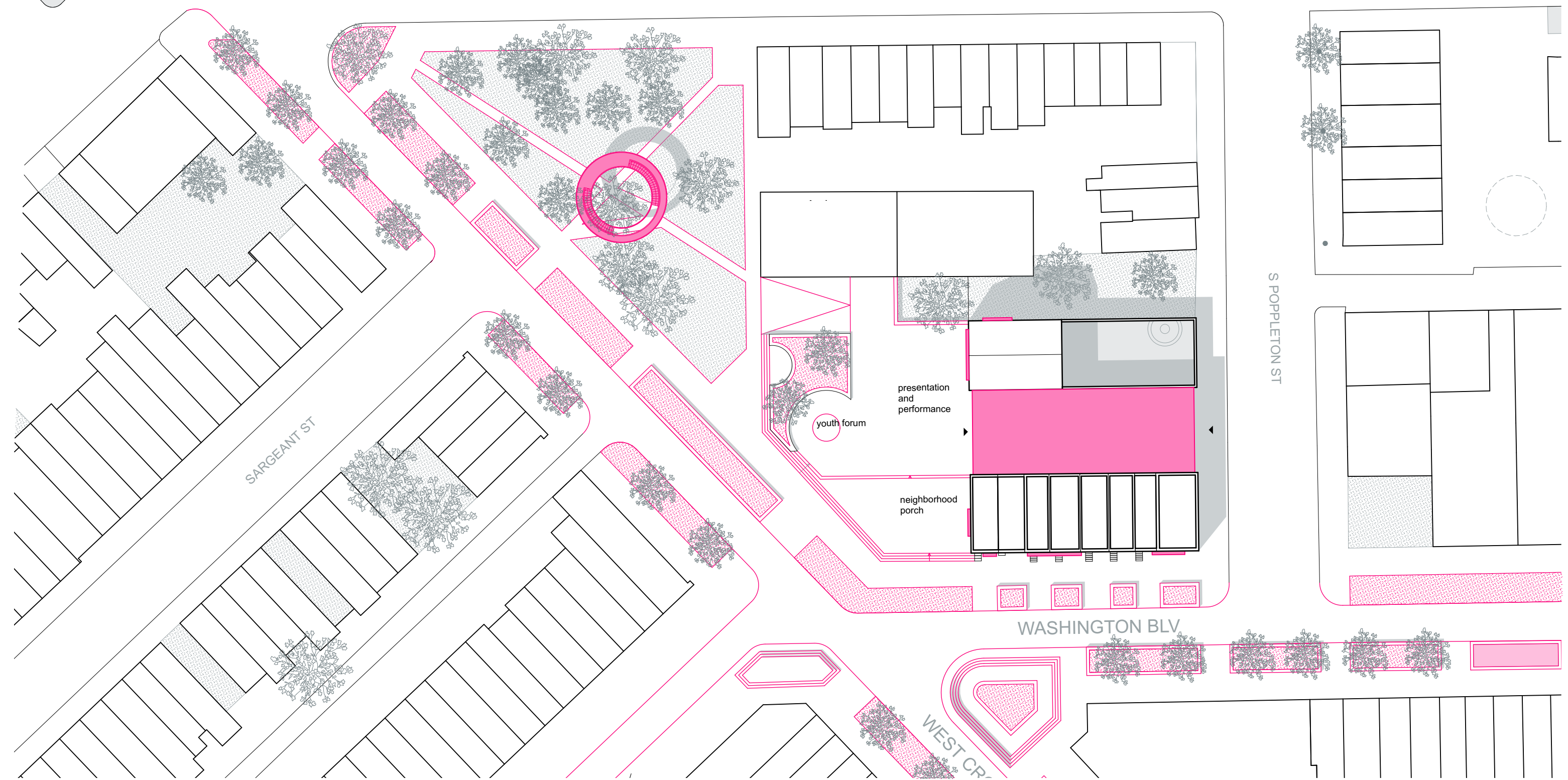
The greenspace in the north west is transformed into a public park and creates a connection to the B&O railroad museum, whilst the court doubles as a public (neighborhood stoop) and a semi public (youth forum, work exhibition) function. The geometries of the main program intersect with the existing and create spaces that invite to discover and interpret.



LOCATION: WEST CROSS / WASHINGTON BOULEVARD



BUILDING CONNECTION PUBLIC REALM
1:500



SITE PLAN
1:500

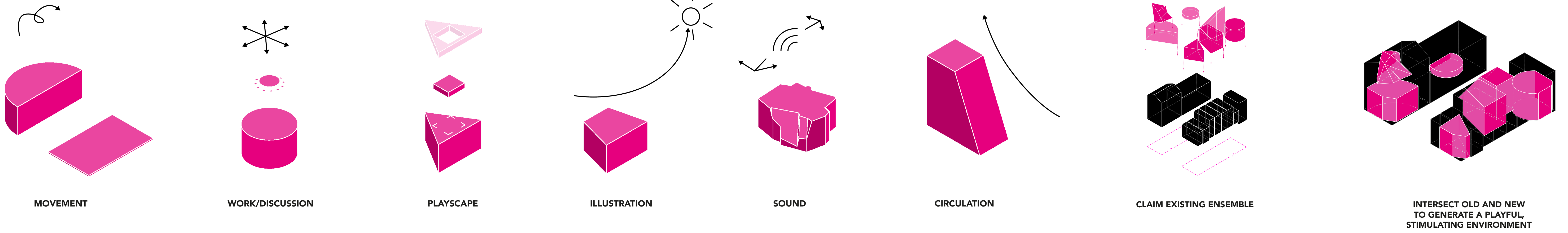
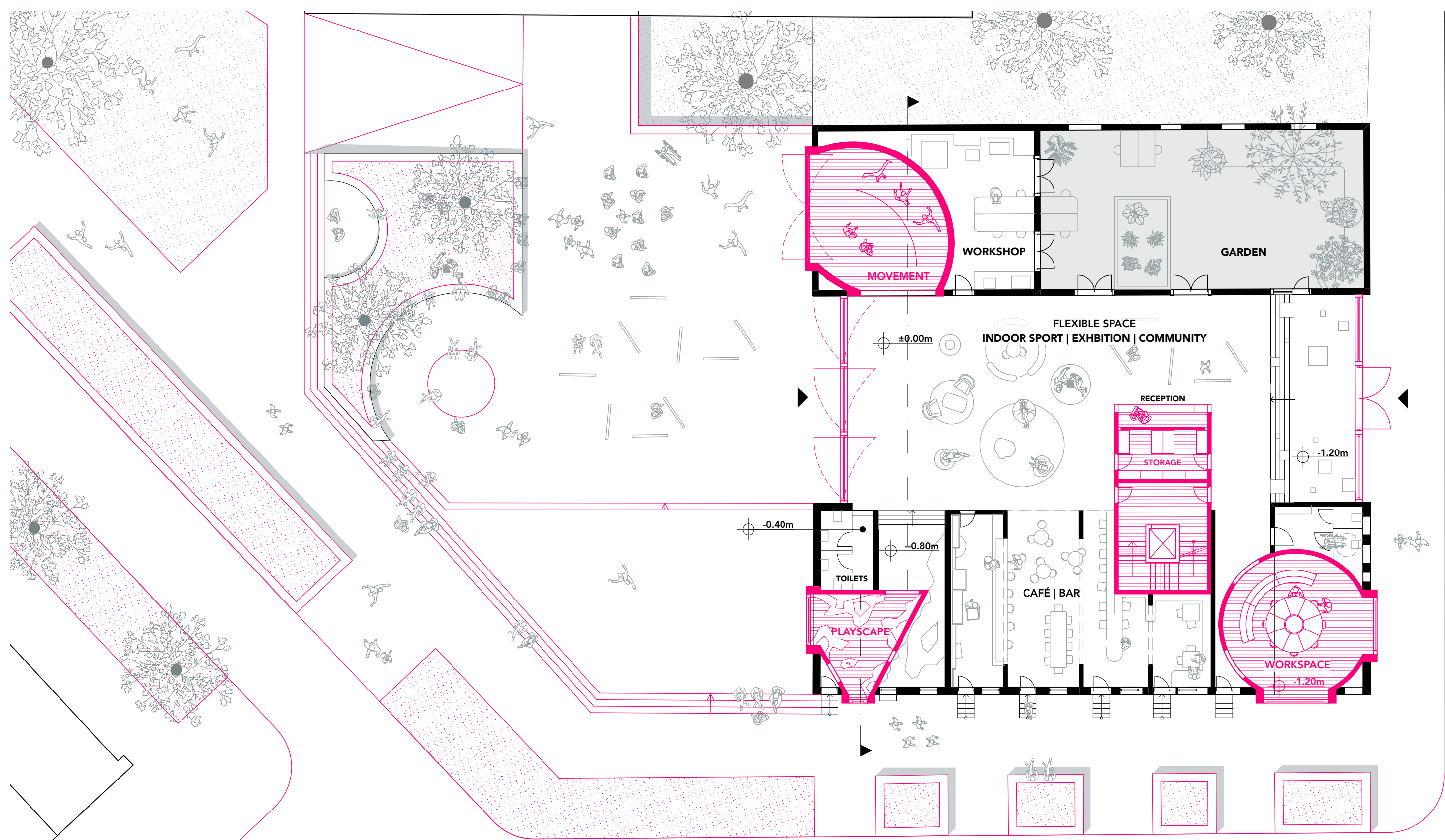
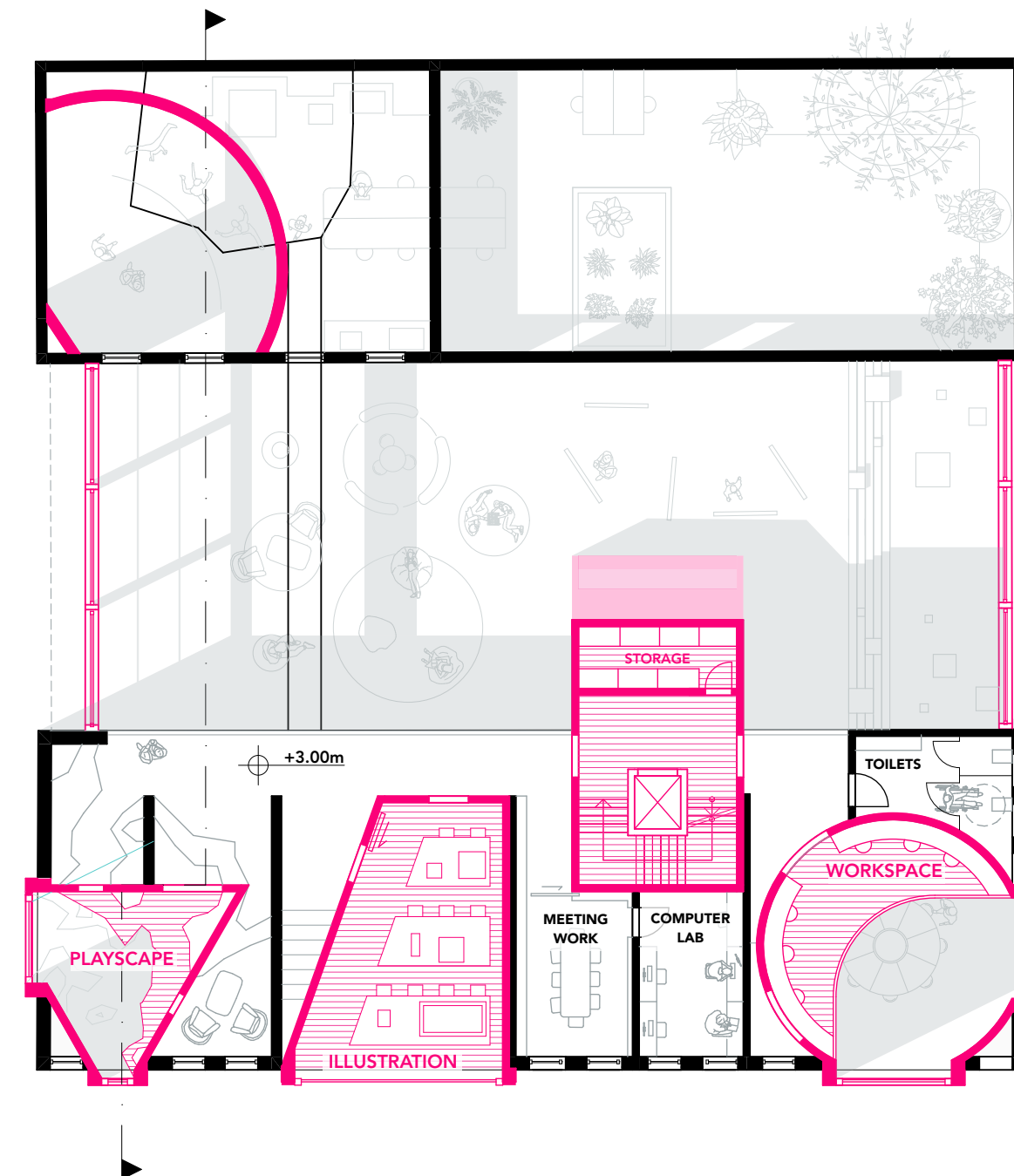


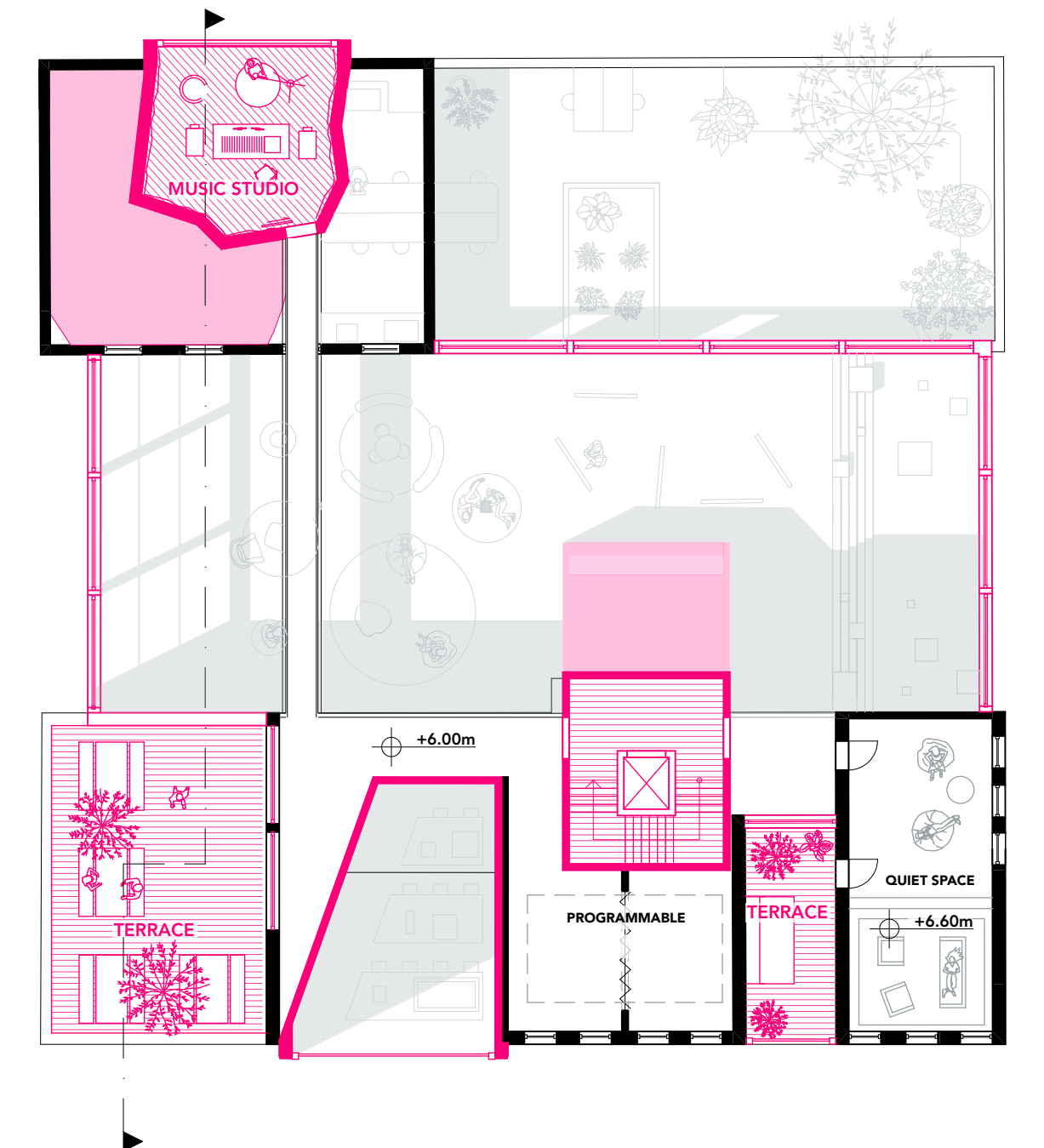
DIAGRAM: SUGGESTIVE GEOMETRIES OF MAIN PROGRAM



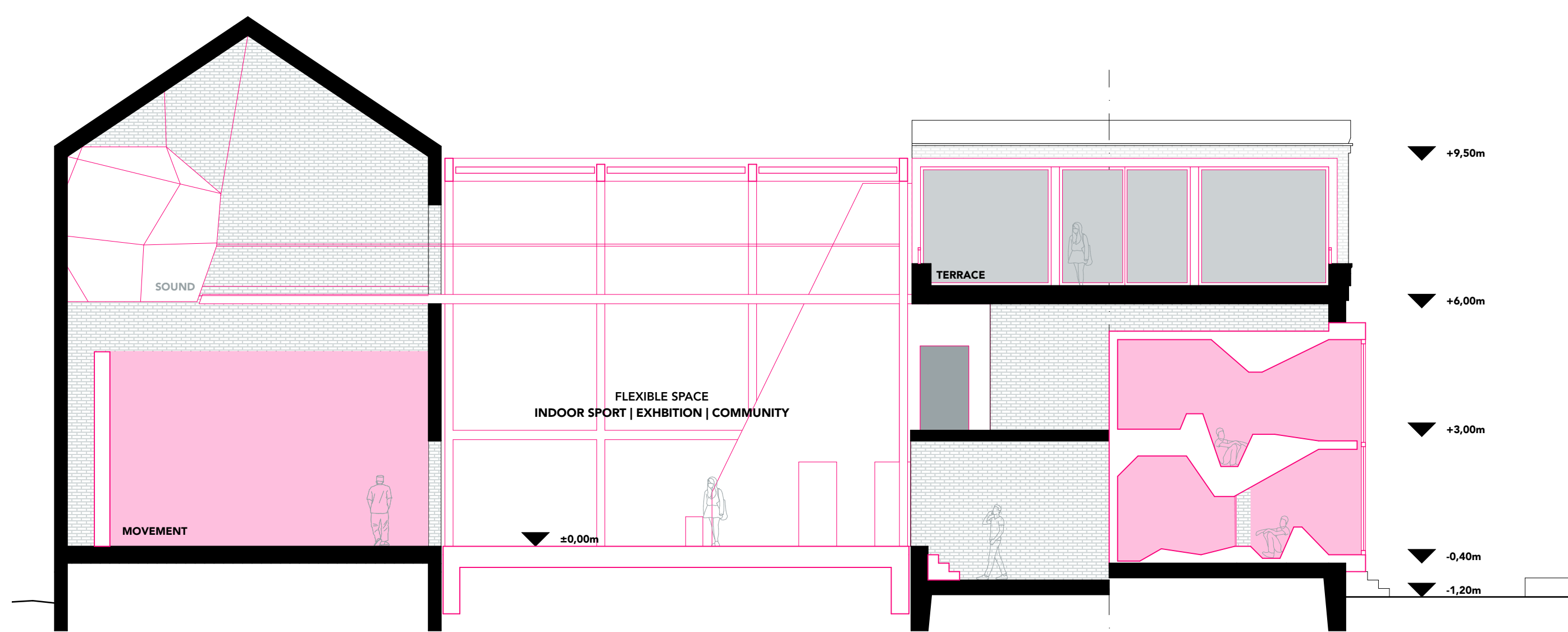
FLOOR PLAN 0
1:200



FLOOR PLAN +1
1:200



FLOOR PLAN +2
1:200



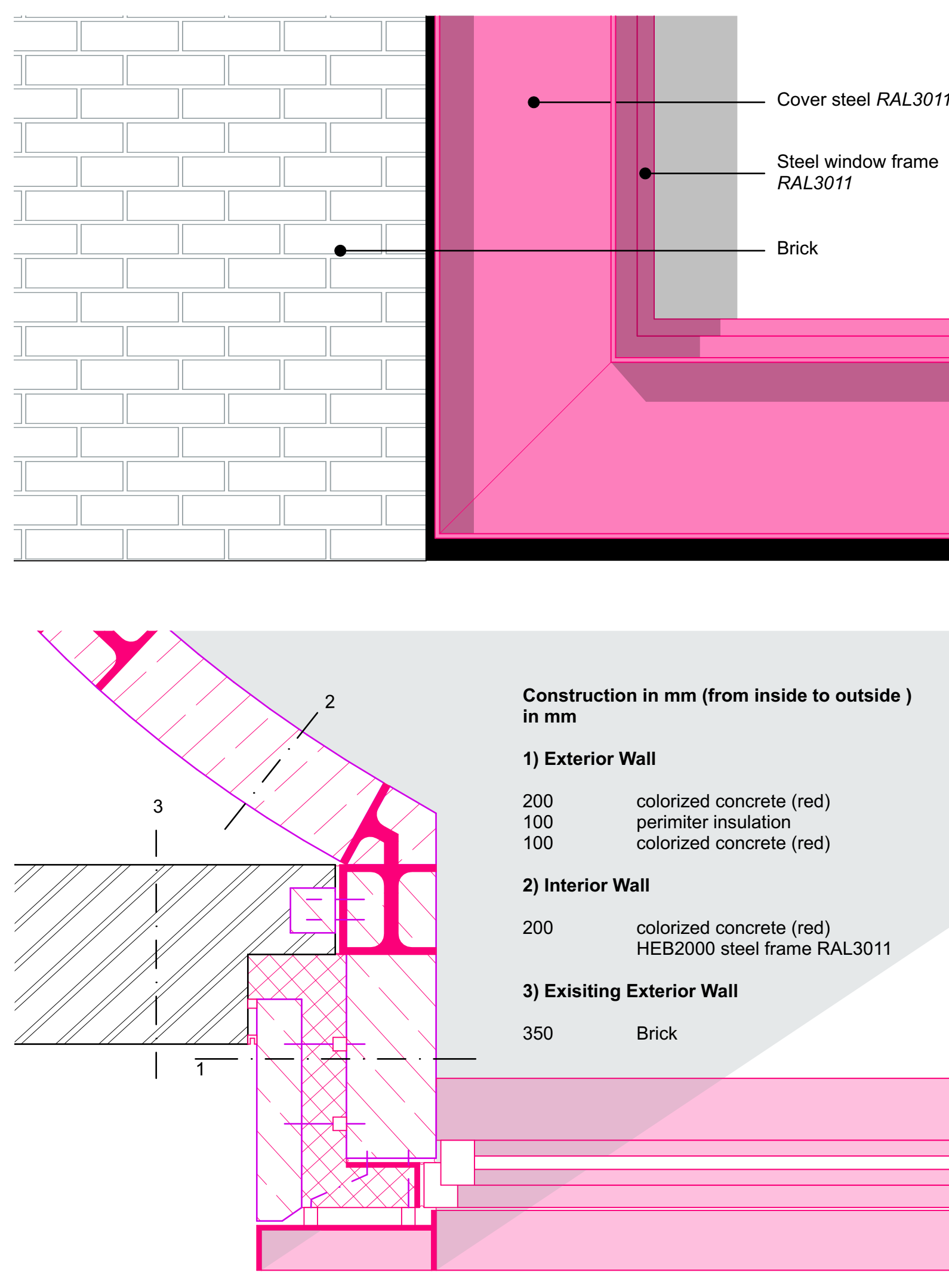
SECTION
1:100



ELEVATION
1:100



PERSPECTIVE VIEW
EXTERIOR



DETAIL: INTERSECTION WITH CONTEXT
1:10



PERSPECTIVE VIEW
INTERIOR

Construction in mm (from inside to outside) in mm

- 1) Exterior Wall
 - 200 colored concrete (red)
 - 100 perimeter insulation
 - 100 colored concrete (red)
- 2) Interior Wall
 - 200 colored concrete (red)
 - HEB2000 steel frame RAL3011
- 3) Existing Exterior Wall
 - 350 Brick