

LIBRARY OF THINGS TO DO

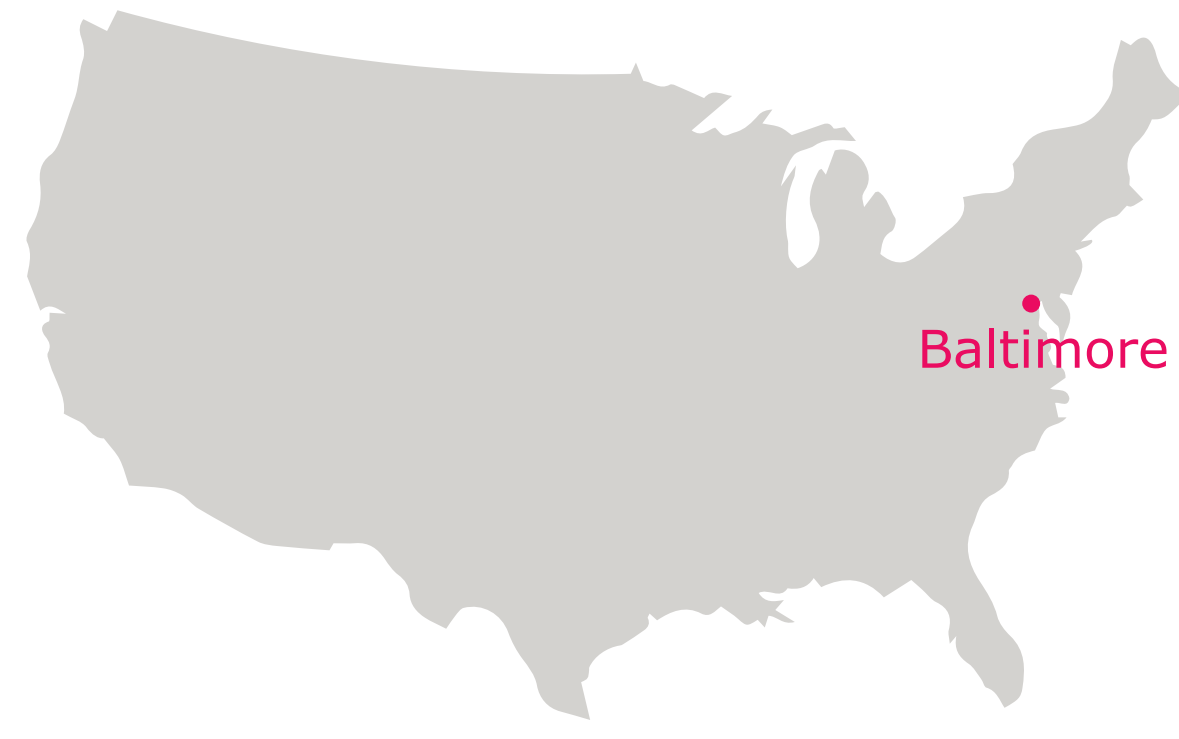
A PLACE WHERE INTELLECTUAL GROWING IS MADE AVAILABLE COMBINED WITH FUN, SOCIAL CONNECTIONS AND COMMUNITY BUILDING

JUST CITY

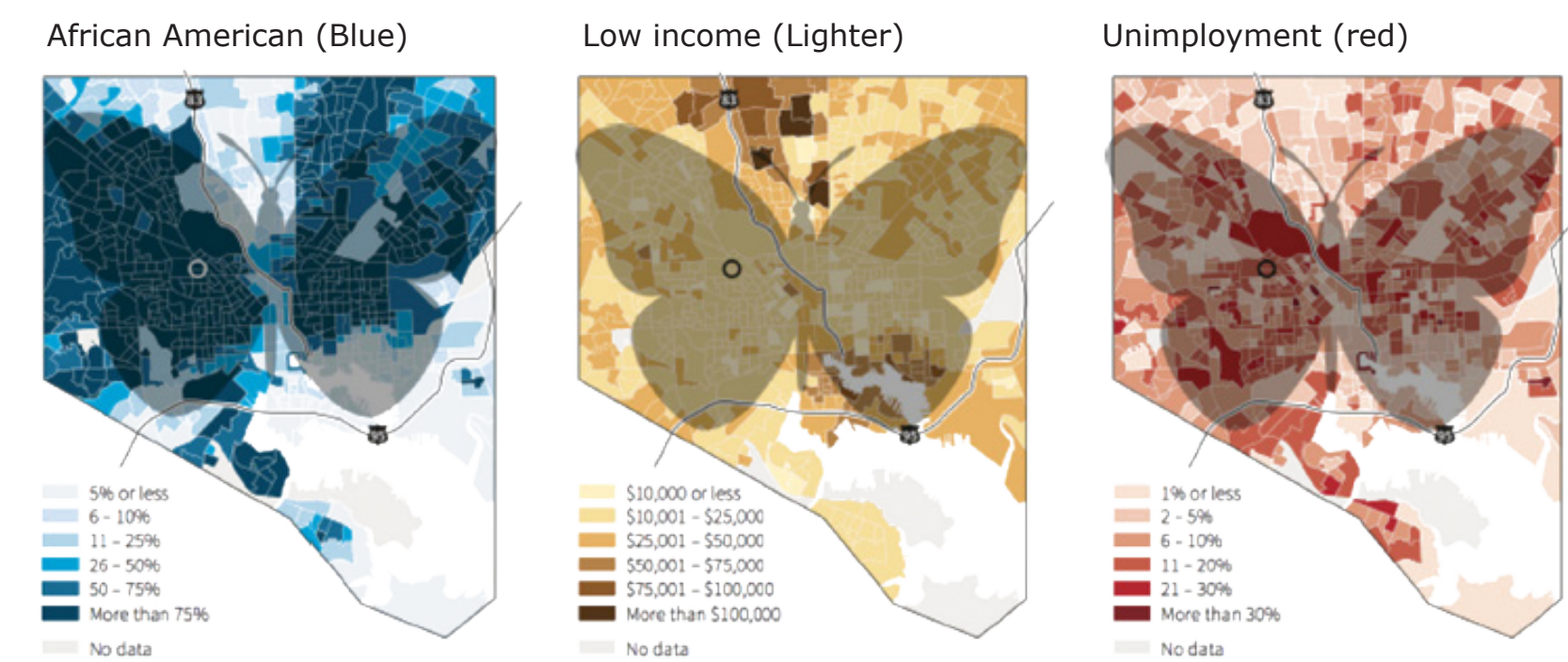
I believe a just city is a place where everybody has an equal right to the city. Schooling, job opportunities, housing... should be available for everybody in the city. Especially for people who are bound to the city they were born in. There should always be equal opportunity to move forward and use the city for your personal needs.



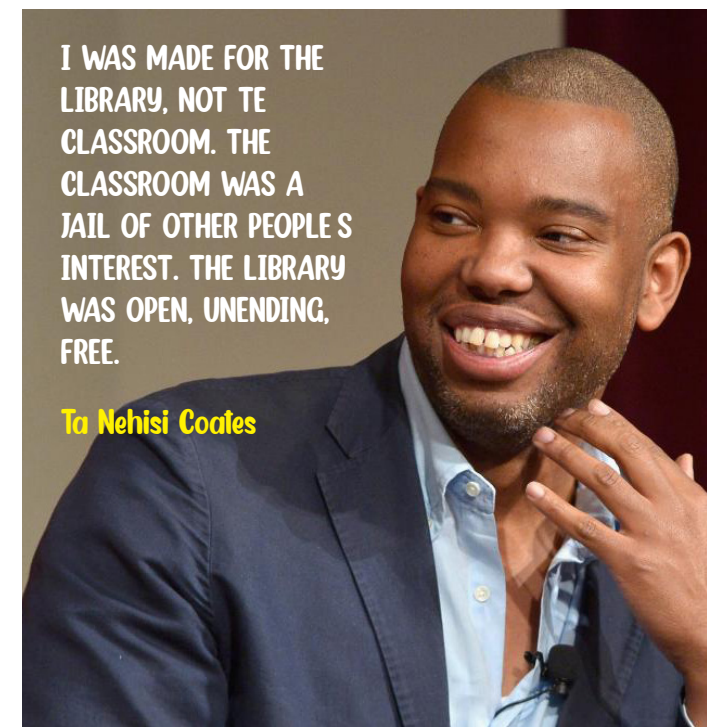
LOCATION



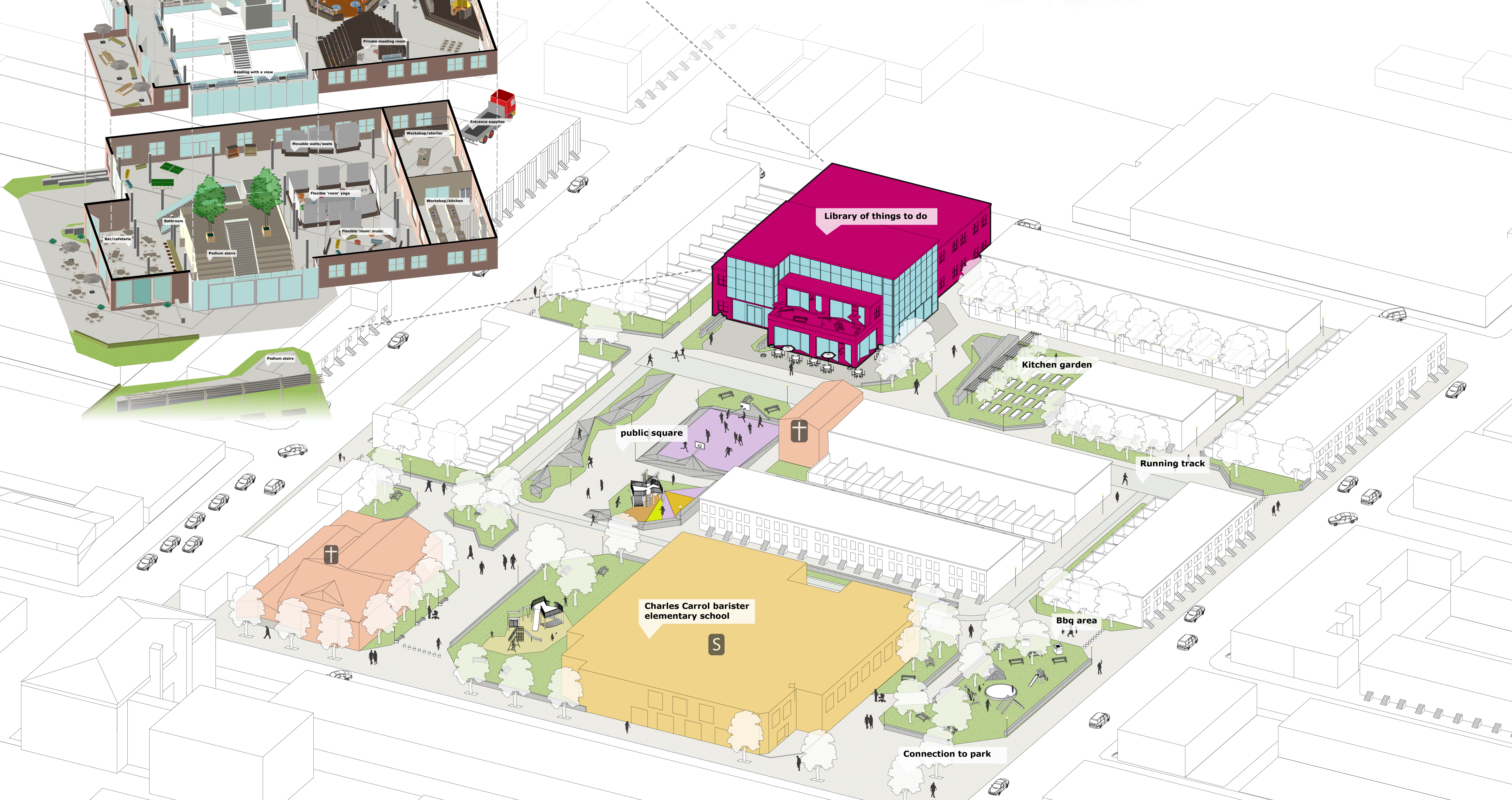
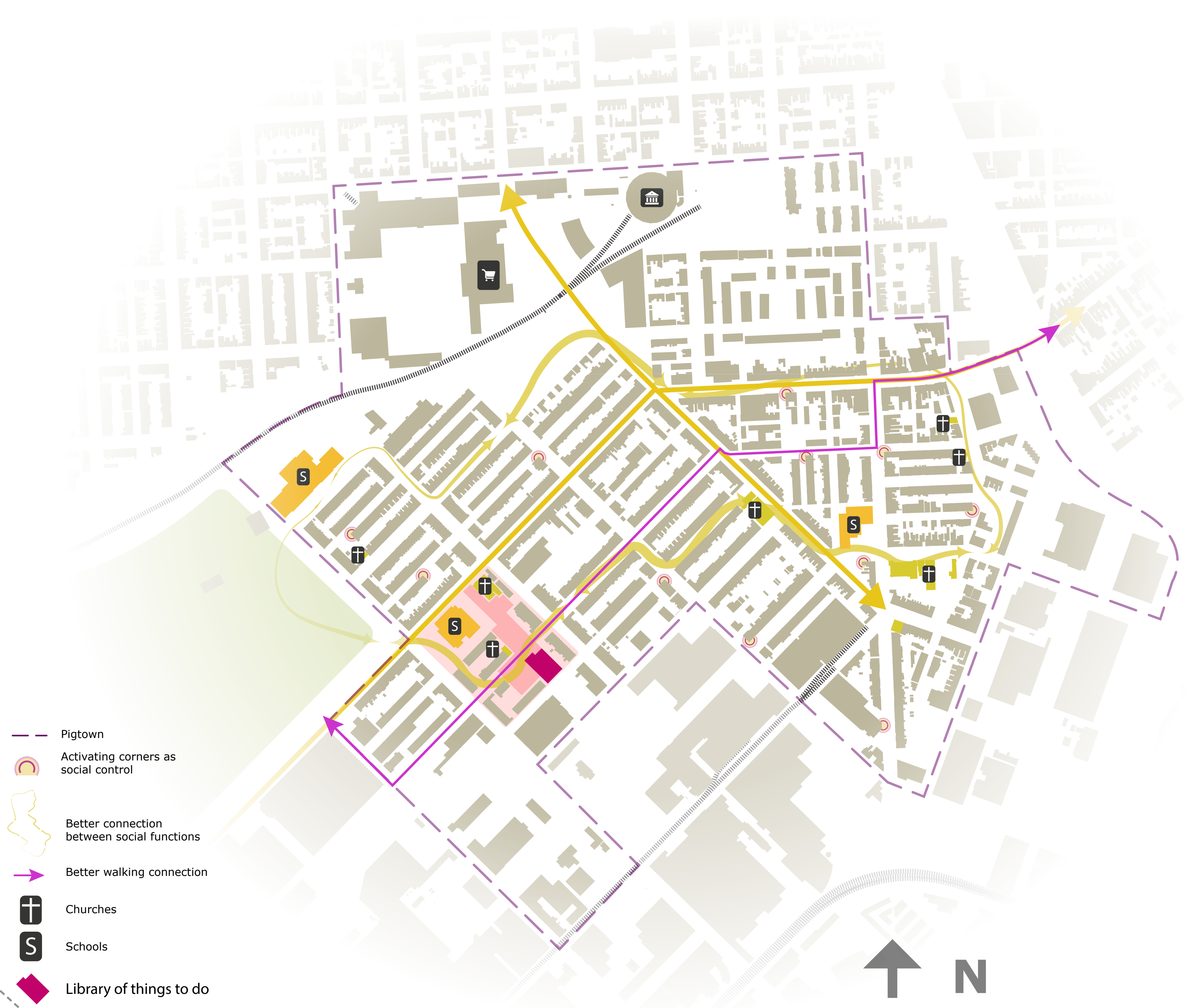
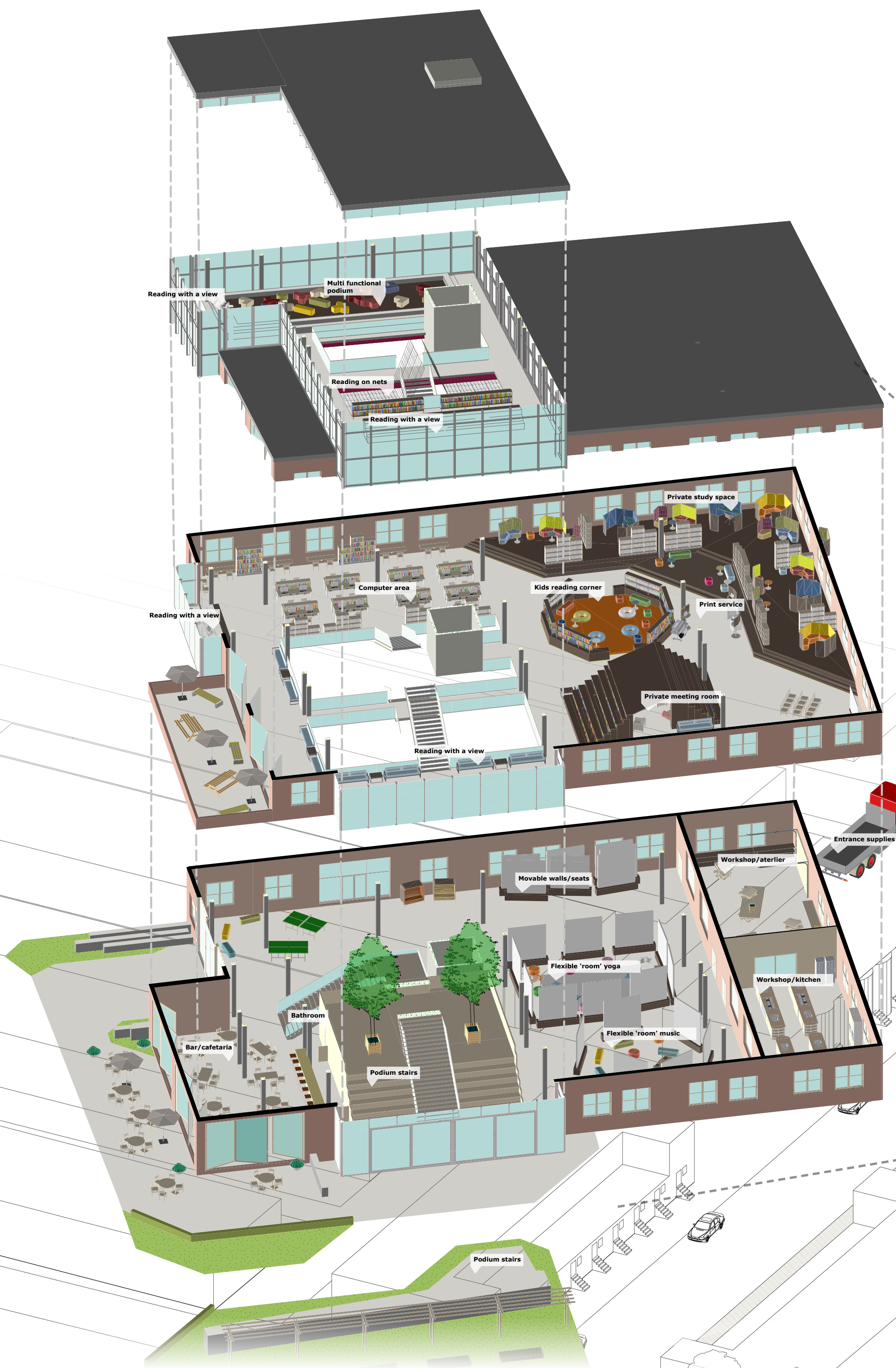
BALTIMORE IN NUMBERS



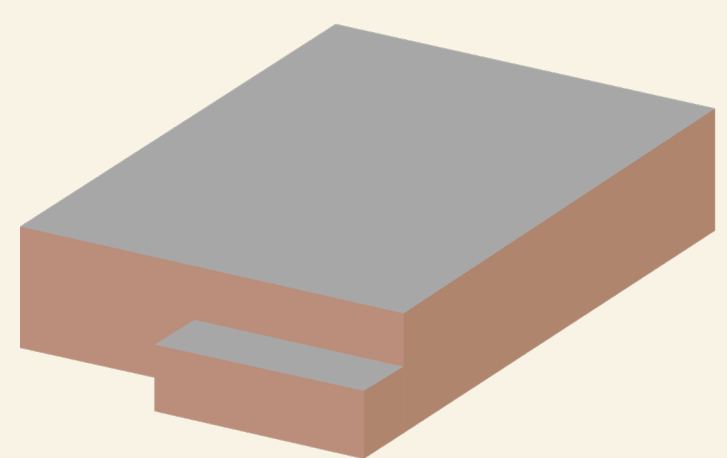
- 63% of population is black
- Unemployment rate in Pigtown is 15%
- 35% of Baltimore lives in poverty



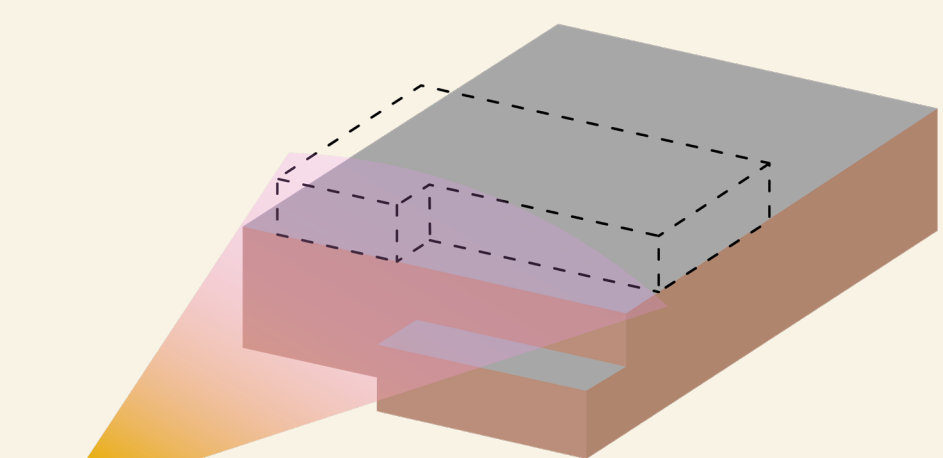
There are very little libraries in the neighborhood of Pigtown. Libraries have the potential to change some of the problems in Pigtown. They make functions as internet, education, printing, reading, ... available. That way people are able to apply for a job or apply for a drivers license for example. Something that is needed to move forward out of a problematic situation.



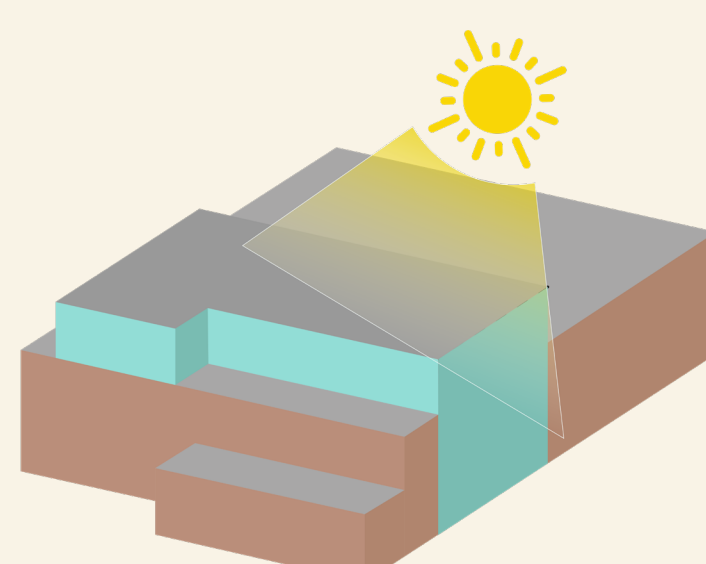
FROM OLD TO NEW



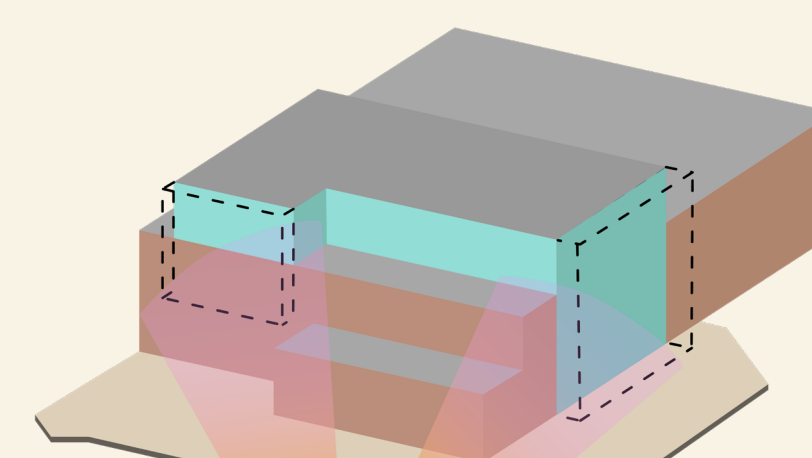
NOW
The building is an old industrial building. It used to house The Burch Company, a supplier of glass windows. It is a reminder of the booming industrial era of Baltimore. Reusing the building helps remembering the past of the city and shows that there is a way forward.



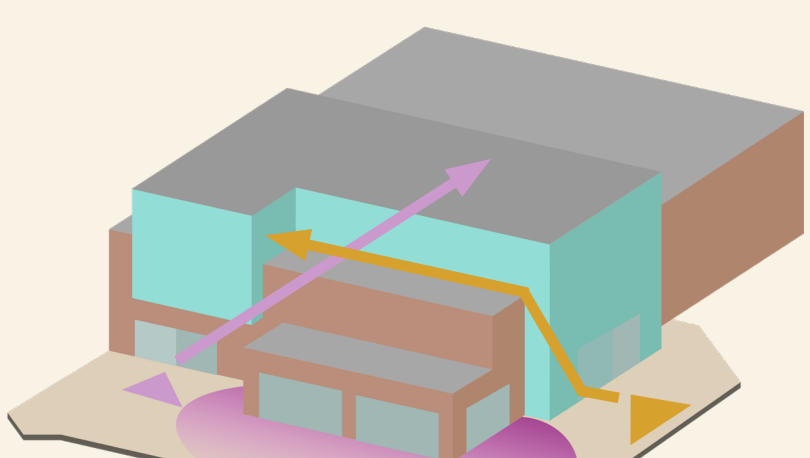
FOCAL POINT
The project starts with making a center point in the neighborhood. Making a building that is higher than its surroundings, creates a focal point in the neighborhood.



LIGHTING
Changing the function of an industrial building to a social function requires some changes in the facade. The most important goal is to let more light inside so the building has more quality of life inside.



ACTIVATION
To make the building visible from every side the glass accent is brought to the front. This way the building activates all the public space in front of it.



CIRCULATION
The 2 main entrances enable the two floors function individually. When the ground floor is used for an event the library on the second floor can still function.

