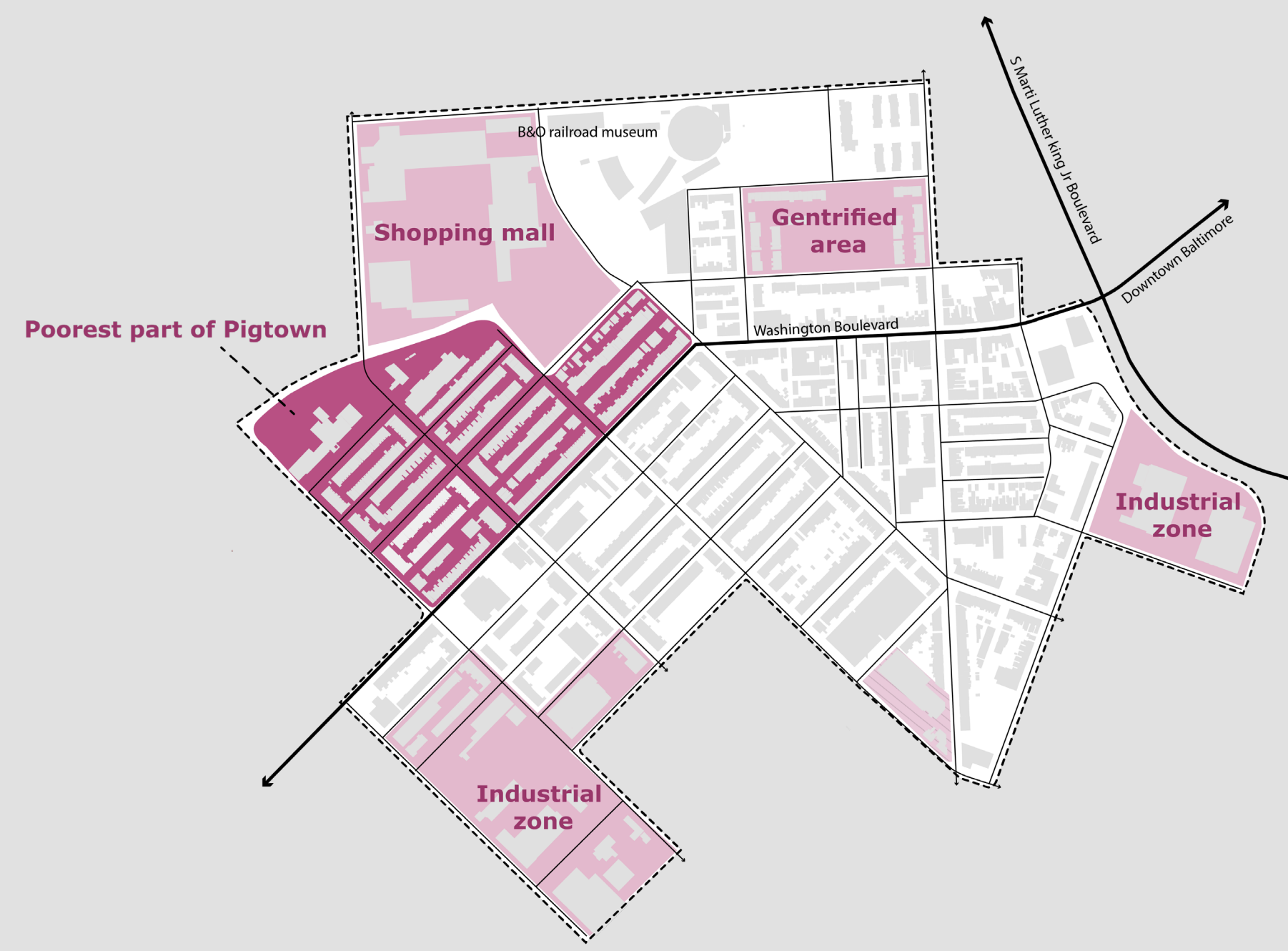


# SAFE HAVEN PIGTOWN

- Every child deserves a safe place. A place to practice hobbies and passions, meet each other, study and relax. But above all a place to get help. A safe haven is a way to prevent children from turing to crime or to get them out of that environment -

## Location: Pigtown, Baltimore



## About Pigtown

After the fall of the industry, due to automation, Baltimore got poorer. The rich people moved out of the city and the poor people stayed. The poverty in the city has different causes and effects.

Segregation is a big problem in Baltimore, which is aggravated by redlining. Other problems are crime, low education, drug abuse, low wages and abuse. Children often leave their parents house because of these problems. They don't study, or they accept low paying jobs.

### Facts

- From the family household almost 70% is single parented.
- Almost 34% of the families in Pigtown lives in poverty.
- 12% of the people in Pigtown is unemployed

### Crime

- Every 40 days there is a shooting
- Every 8 to 9 days somebody gets badly assaulted
- Every 14 days somebody gets robbed

## What's a just City?

I believe a Just City is a city with **equal opportunities**. A city with **affordable housing and job opportunities**. But above all a just city should have a **safe place** for everyone. Especially for kids, since they are the future. I believe that giving children a safe place is a way of adressing poverty.

## Strategy

A network of safe places and safe streets is formed in Pigtown. The safe streets are green and have a broad sidewalk. They connect the four new safe havens and the existing safe places and activities.

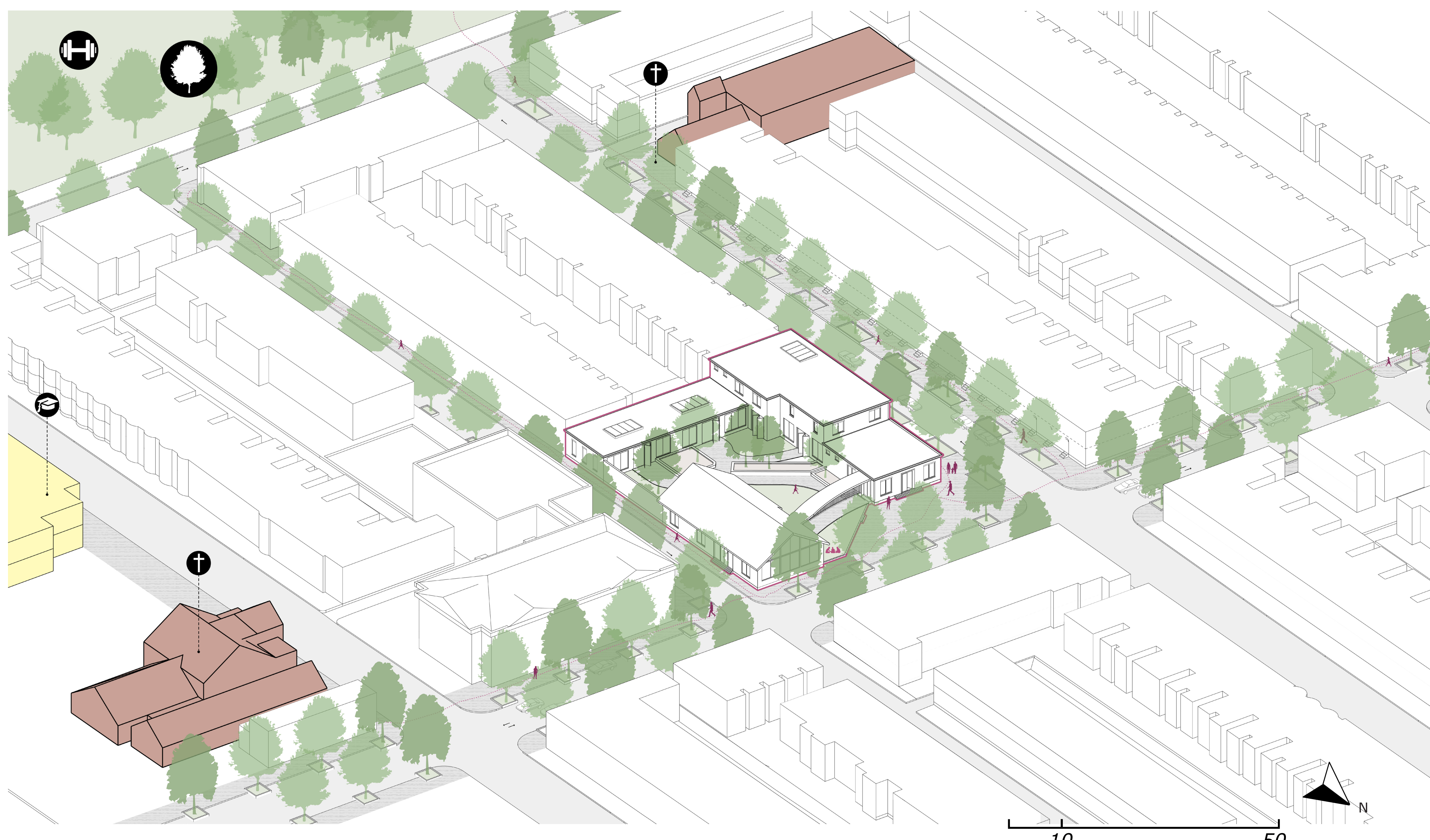
### Promising buildings and plots



There are four promising buildings and plots in the neighbourhood for developing safe havens. Each location has a different program and target group. This way they strenghten each other.

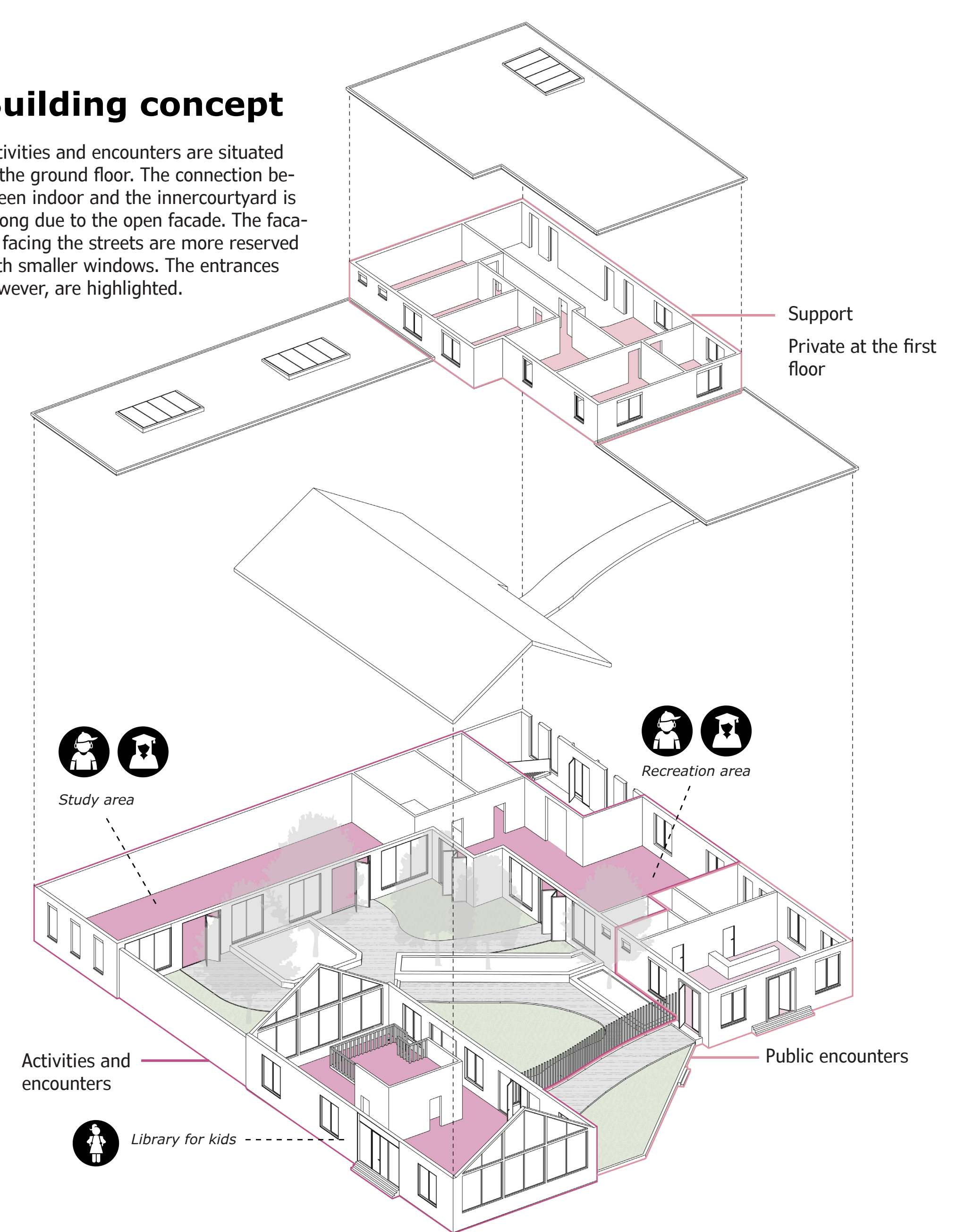


The Safe Haven is formed at the end of the block. A network of safe streets has been formed to connect the new Safe Haven and the existing places, like the park, the churches and the schools. The safe streets have broad sidewalks and a lot of trees.



## Building concept

Activities and encounters are situated at the ground floor. The connection between indoor and the innercourtyard is strong due to the open facade. The facade facing the streets are more reserved with smaller windows. The entrances however, are highlighted.





The height of the building blends in with its surroundings.

## Floorplan

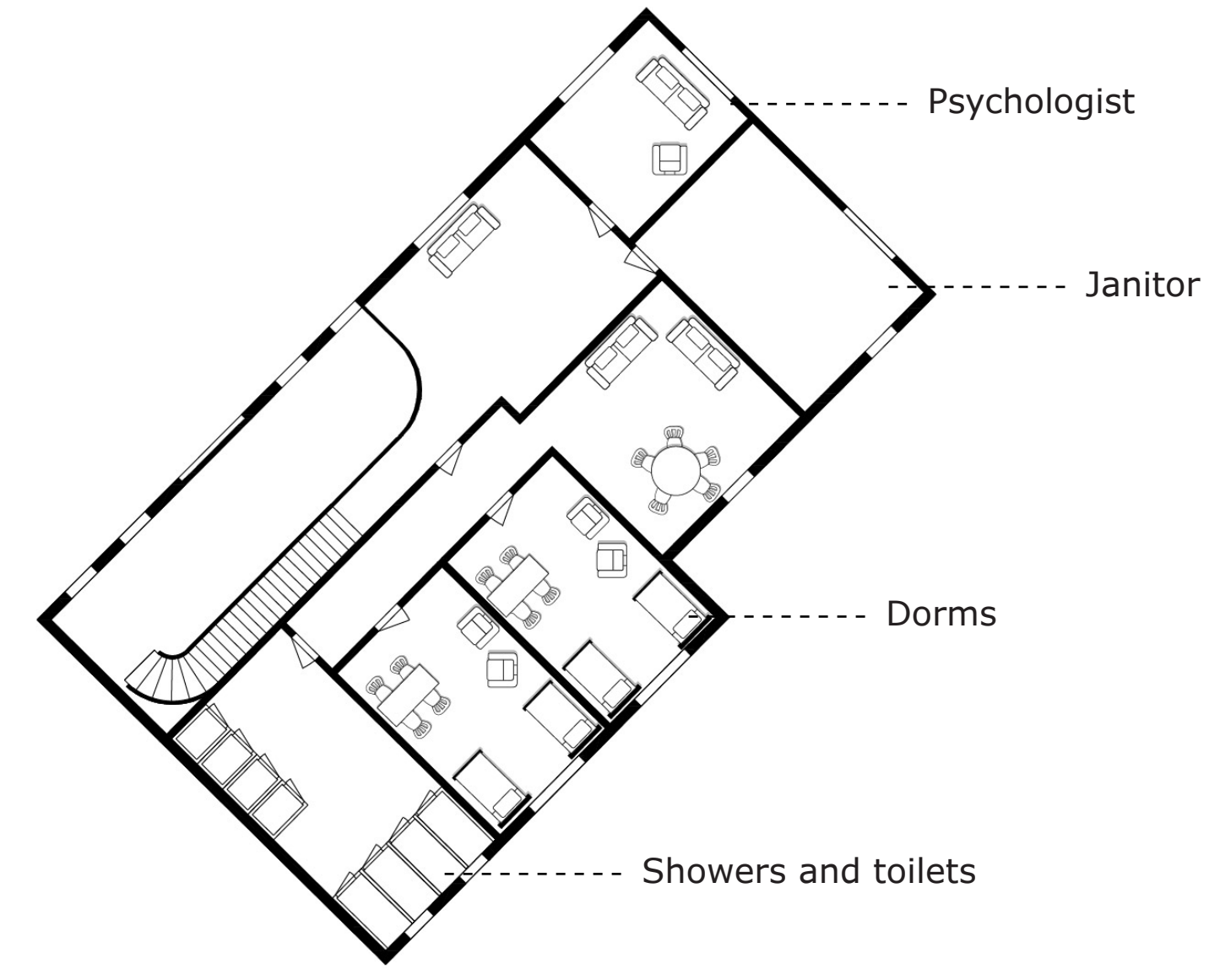
### Ground floor

The ground floor houses a public cafeteria, recreation area, study area and a library for children. Every target group has its own indoor and outdoor space.



### First floor

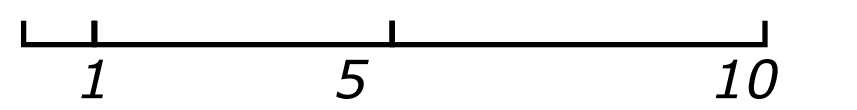
The support system is located at the first floor. It's located away from the other areas at the ground floor. This is a way to create privacy for the people who need help.



### Facade and main entrance



Above you can see the main entrance. This entrance leads to the support at the first floor. The entrance is highlighted by high, two storey, windows. This gives the entrance a welcoming and light feeling.



### Public space



Public space at the front with the entrance to the cafeteria and the library for kids. A fence closes of the inner courtyard to provide safety. The minimalistic fence creates a soft transition.

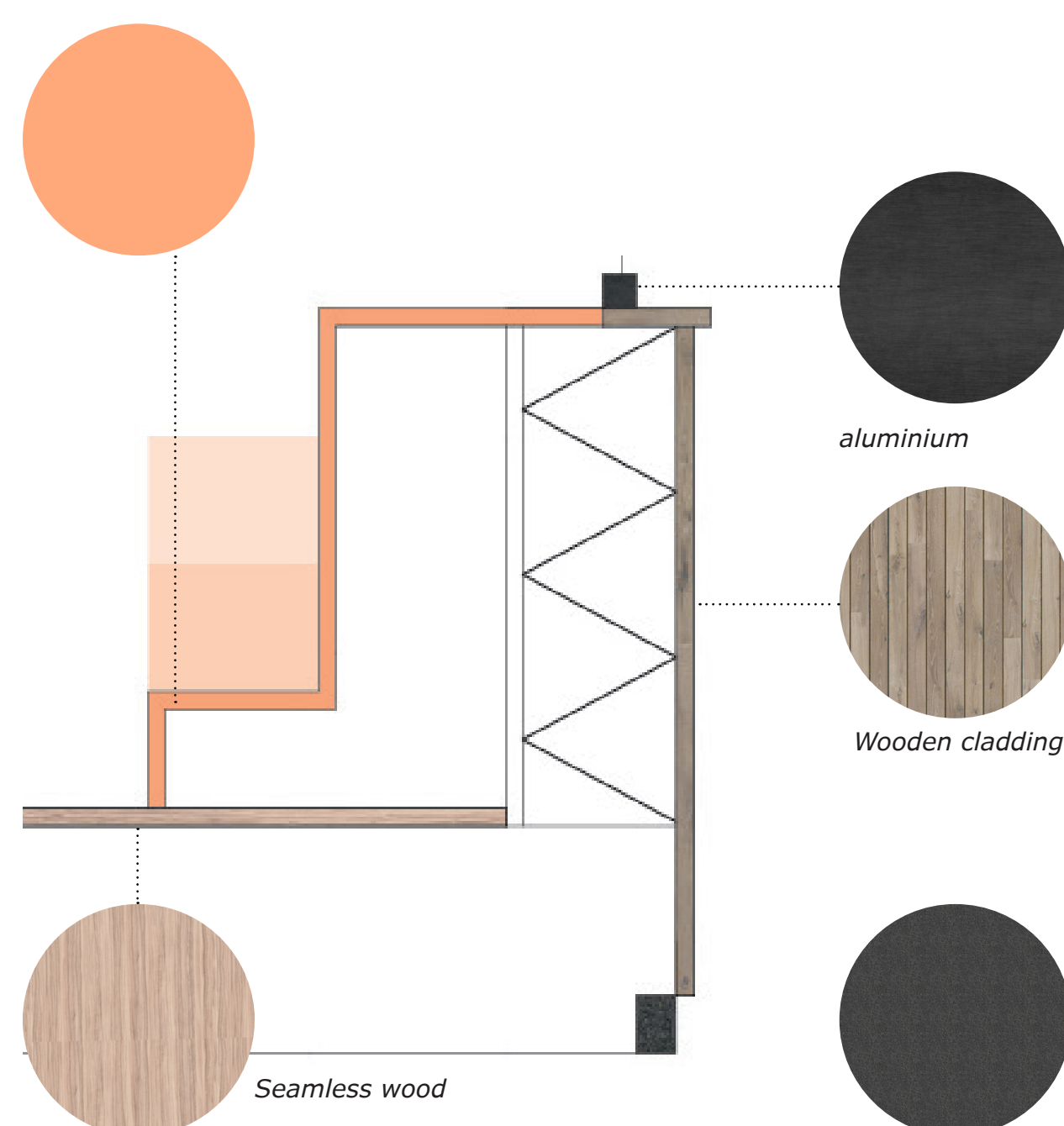
### Inner courtyard



The inner courtyard has different areas so that every target group has a place to be outside. The facade of the buildings to the courtyard is open to create a strong connection between indoors and outdoors.

### The library

The library has been designed for children. The pitched, overhanging roof, gives a safe feeling. The materials are minimalistic, with one colourful excess; the seats in the window. This, together with the bookshelves gives the library a playful character.



### The study

The open facade and the skylights create a light area with a strong connection to the inner courtyard. Here teenagers and students can study and use the computers.

