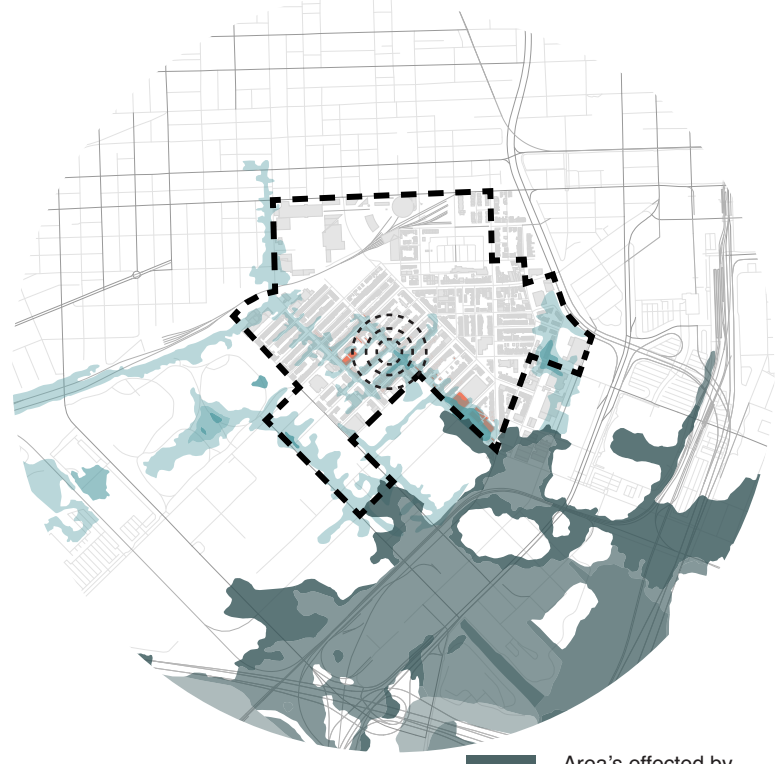
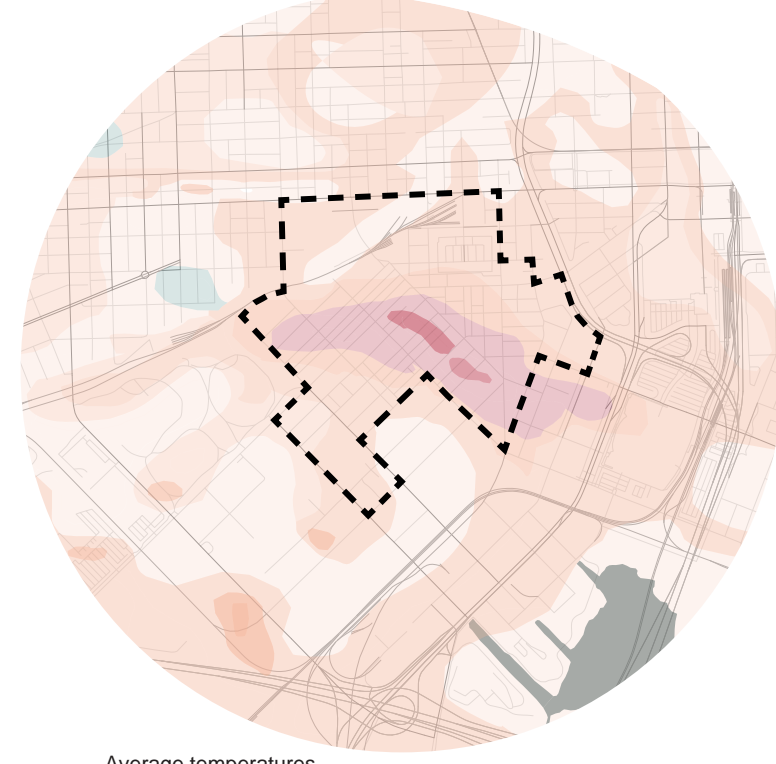


PIGTOWN LOOP

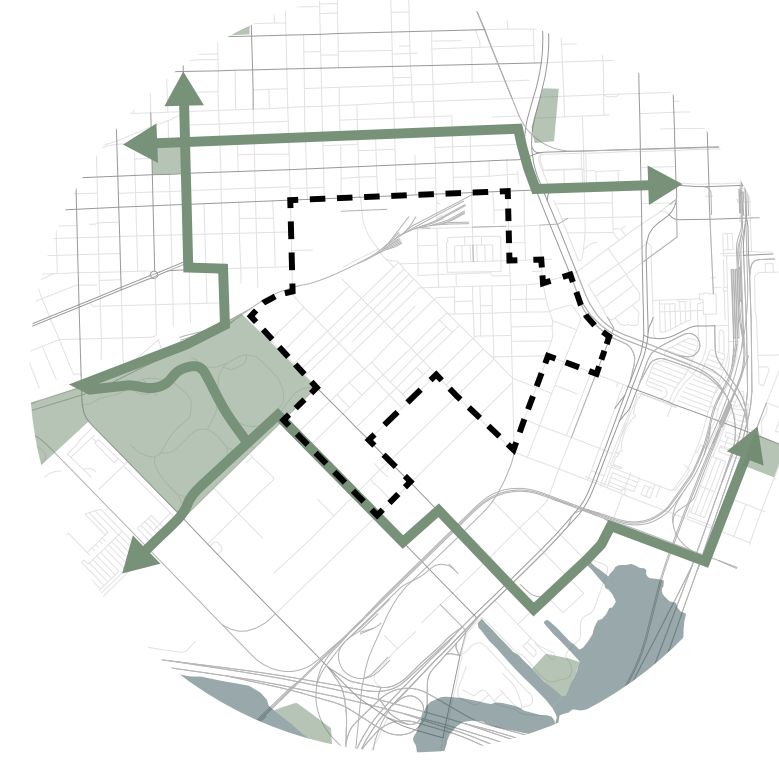
“We wouldn't need Cooling Centers if we had healthy neighborhoods”
 Del. Robbyn Lewis



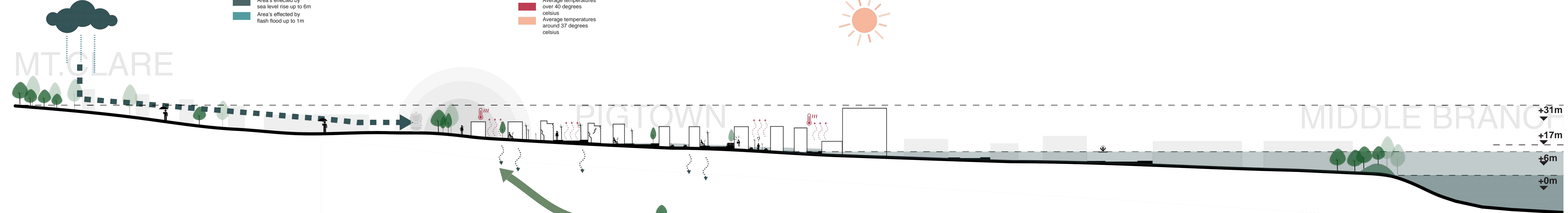
PIGTOWN IS DROWNING
 The 'low' geographic location of Pigtown makes it extremely vulnerable to flooding. During flashfloods, the water flows down from the higher hinterland into Pigtown, where it collects and cannot flow away. The most vulnerable area in the neighborhood is located along West Ostend st. With sea level rise and flash floods at its doorsteps.



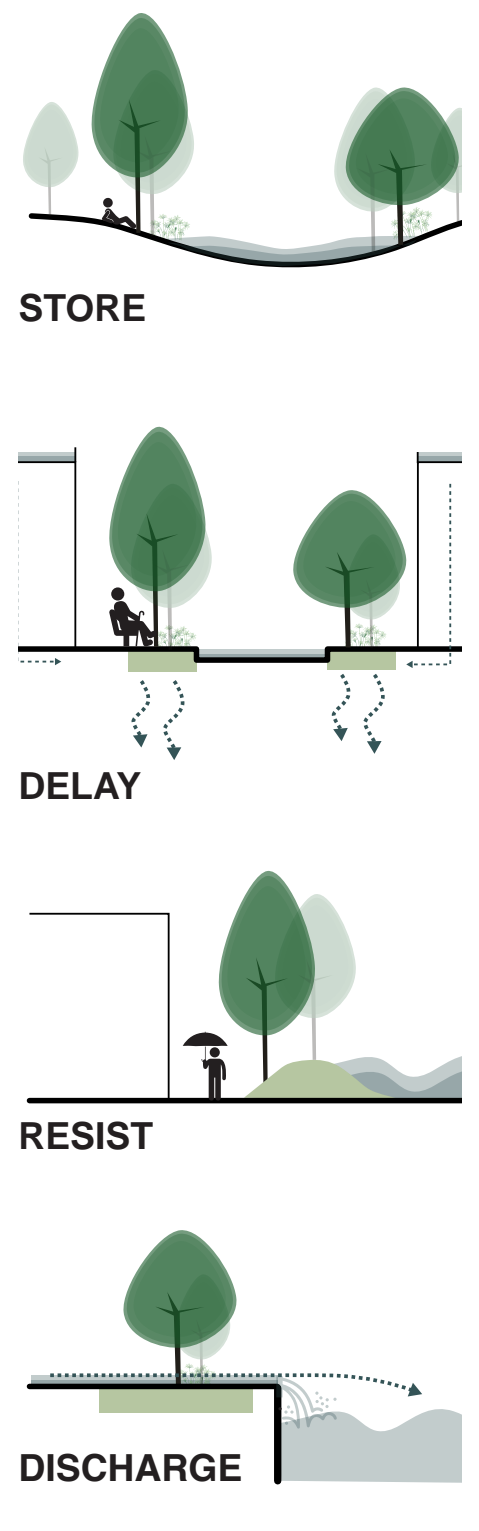
PIGTOWN IS TOO HOT TO BREATHE
 During the heat waves in the Baltimore region extreme temperatures occur with huge differences in between neighborhoods. The most vulnerable suffer the most. The humid subtropical climate makes the heat unbearable. During periods of extreme heat, cooling centers (mostly community based), are opened, but they are not reached by the vulnerable groups.



PIGTOWN IS BEING SKIPPED
 The Baltimore region, through the efforts of local communities, has established guidelines to counteract these conditions. By introducing the Baltimore vision plan, a new green network to combat climate change and improve livability. One drawback, one of Baltimore's most vulnerable neighborhoods is being skipped. Investments are being done around Pigtown maintaining the heat island.

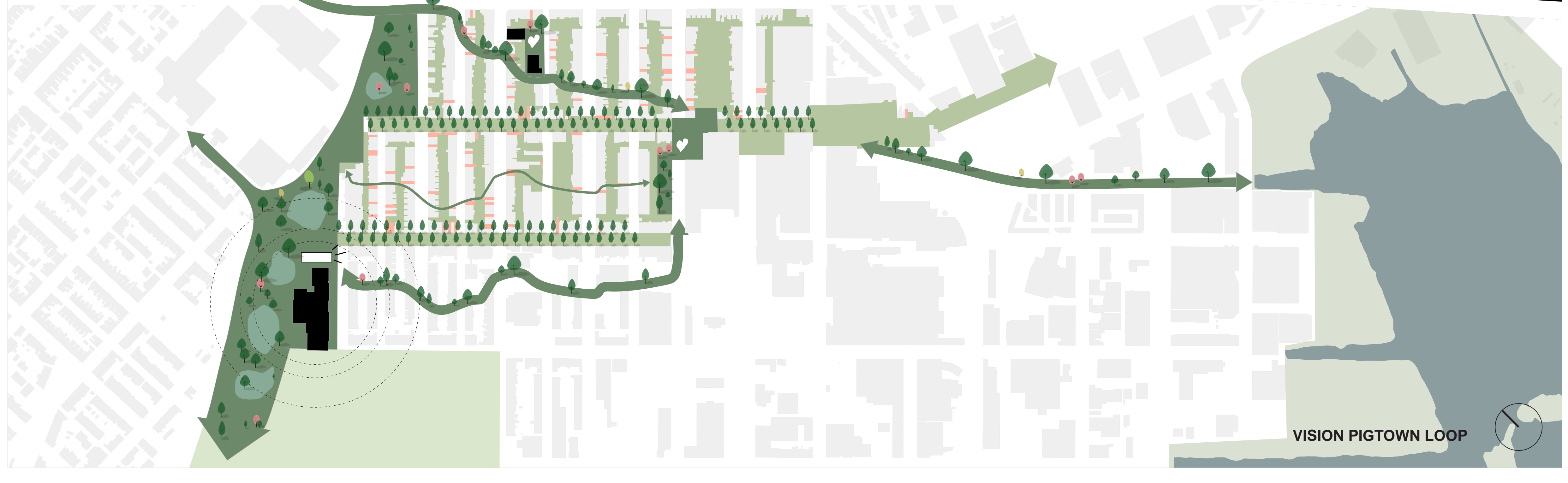


PIGTOWN LOOP
 To boost livability in Pigtown, a strategy that offers potential to deal with the social and climate issues. Pigtown Loop tries to link various opportunities together in a integral greening strategy based on natural solutions. Starting with water.



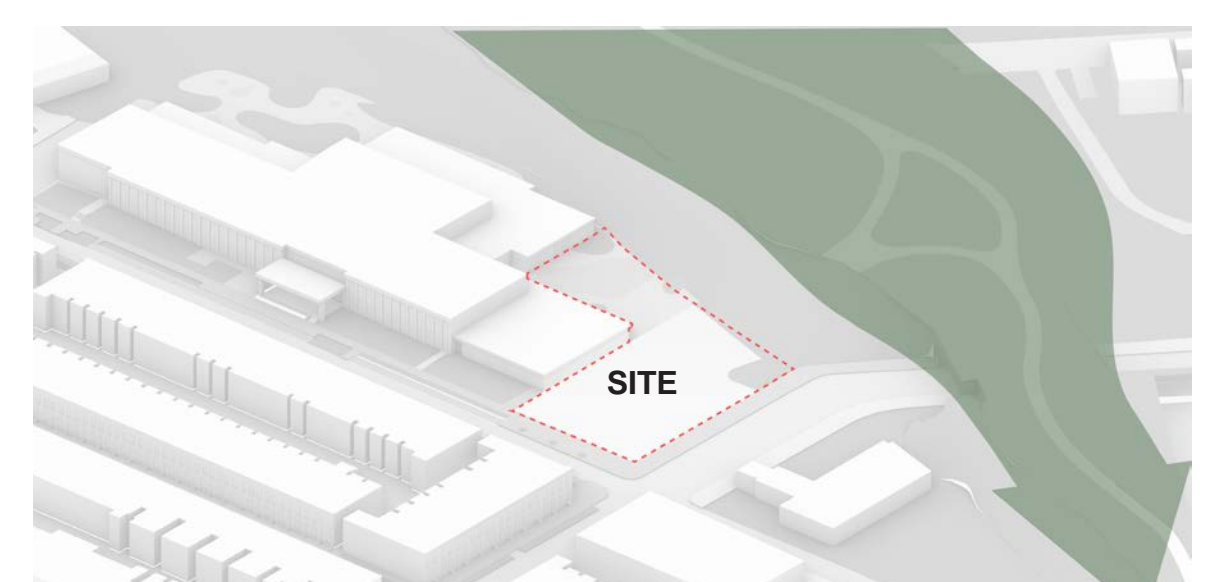
Using the advantage of the topographic locations of Pigtown creates a strategy that consists of four steps: storage, delay, resist and discharge. The zones are divided based on available space and the elevation. By trying to keep the water out of the Pigtown and raising it to the benefits of the people, a new green belt is created, using the historic higher railroad as a bases for new water-collecting park.

In Pigtown the amount of vacant plots and buildings is on average higher then other neighborhoods in Baltimore. By transforming the lots into green spaces, a new network appears providing air, shade/cooling and quality of live back to the neighborhood.

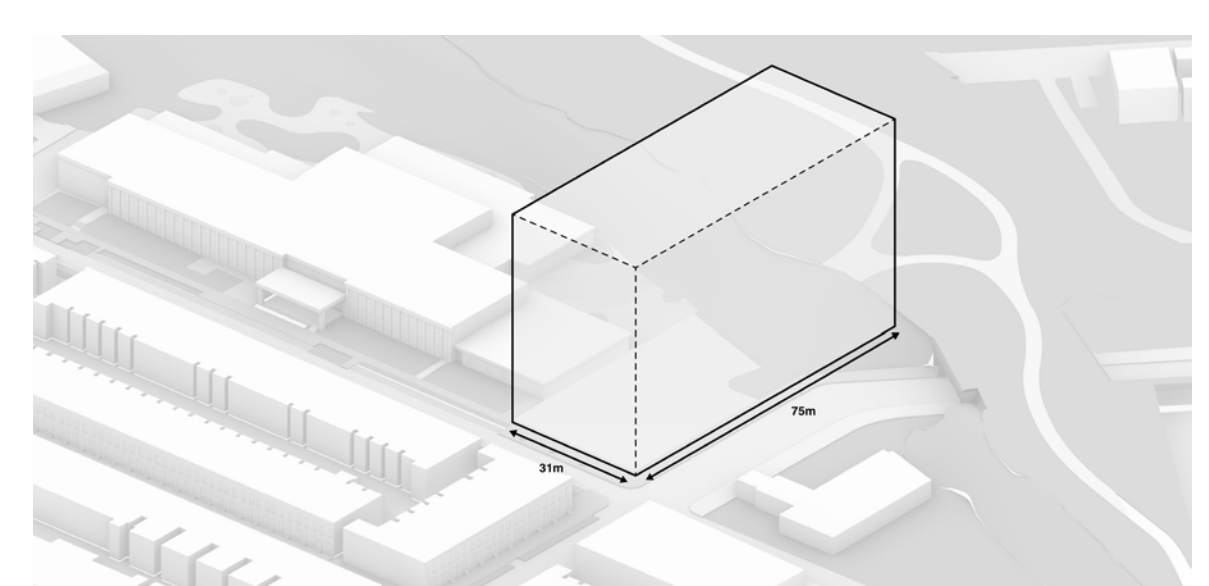


BUT WHERE DO WE START?
 Pigtown's green desert need to come to an end! By creating a new green network which starts at Southwest Baltimore Charter School. It will open up connection to the surrounding neighborhoods and places Gwynns Falls. Using the vacant lot and building, a new network of pocketparks and greenified backalley will help the area to cool down. Linking local communities initiatives together in a green environment. The network helps to cope with the rapid changing climate by creating must needed outdoor spaces that provide shade and social activities.

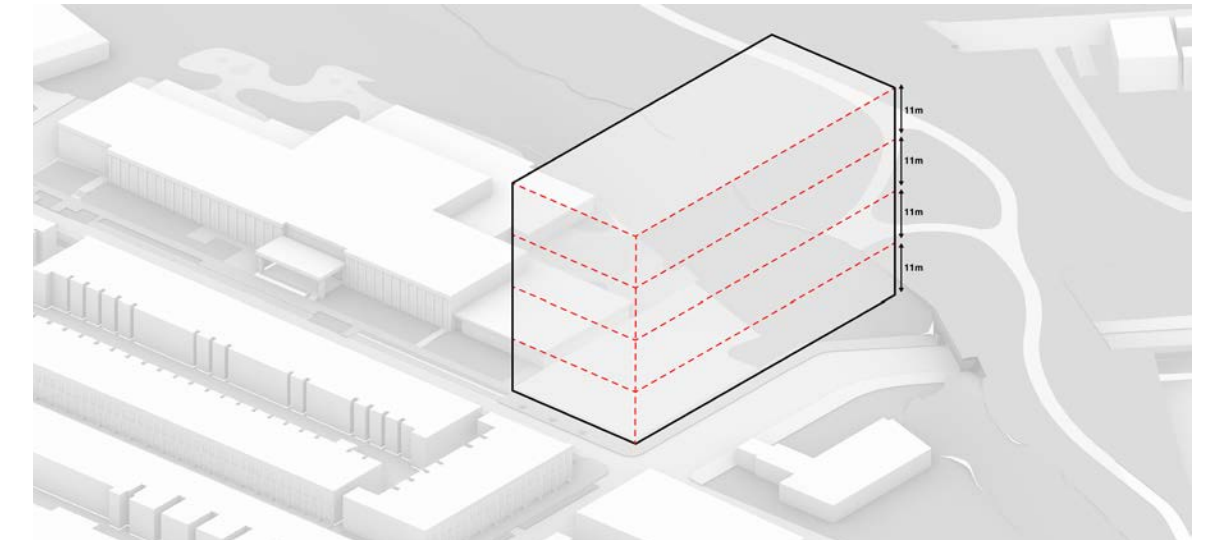
The Southwest Baltimore Charter School located along the historic railroad and connected to Carroll park. Ideal for a new hotspot to help and teach people cope with the effects of climate change is high. The new Loophouse becomes a gathering place for Pigtown and beyond to get taught the craft of gardening and all the aspects it requires.



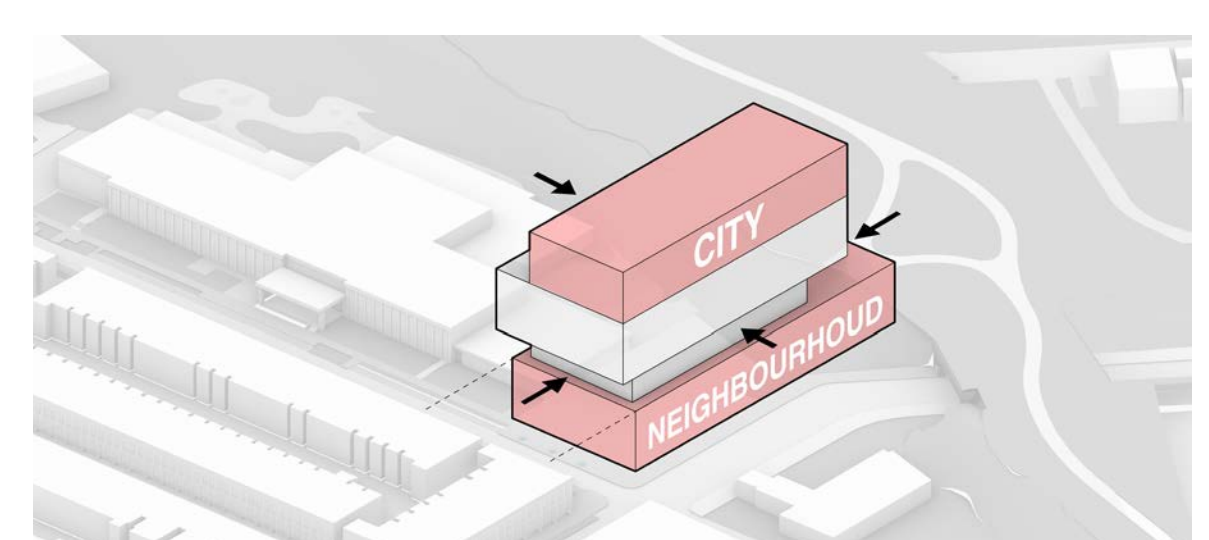
THE EXISTING SITUATION
 The site is located at the intersection of S. Carry street and Herkimer St. With the Southwest Baltimore Charter School and the Railroad on its sides and Carroll park isn't far away.



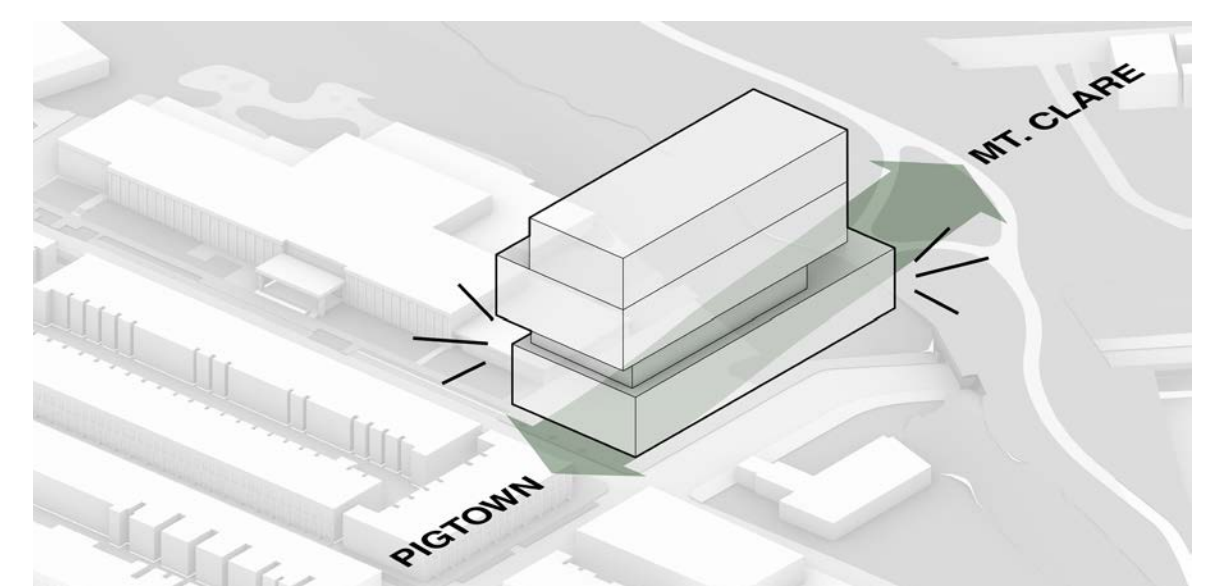
BUILDING ENVELOPE
 The envelope is located adjacent to the SBSCS on the parking lot. With the maximum dimensions of 31m to 75m.



TREE AS A BASE
 The trees forms the basis for the volume of the building. Dividing the volume into four parts, where the can grow, have enough sunlight and are able to be transported out of the planter and into the wild.



LOOPHOUSE SHIFTS INTO IT'S CONTEXT
 By shifting the volumes towards the solid volume becomes more reliable to the scale of the historic rowhouses of Pigtown. The top floor is pushed in to create a platform with panoramic of the city of Baltimore



LOOPHOUSE CONNECTS
 The open, public groundfloor provides a much needed connection to the surroundings. Creating an entrance for the neighborhood.



AXONOMETRIC 1:500 PIGTOWN LOOP



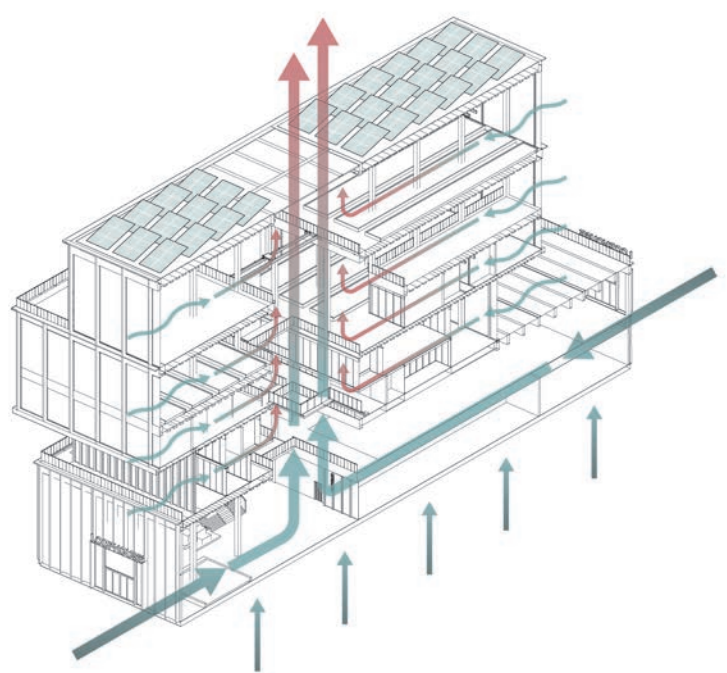
The LOOPHOUSE:
 view from the new park

LOOP HOUSE

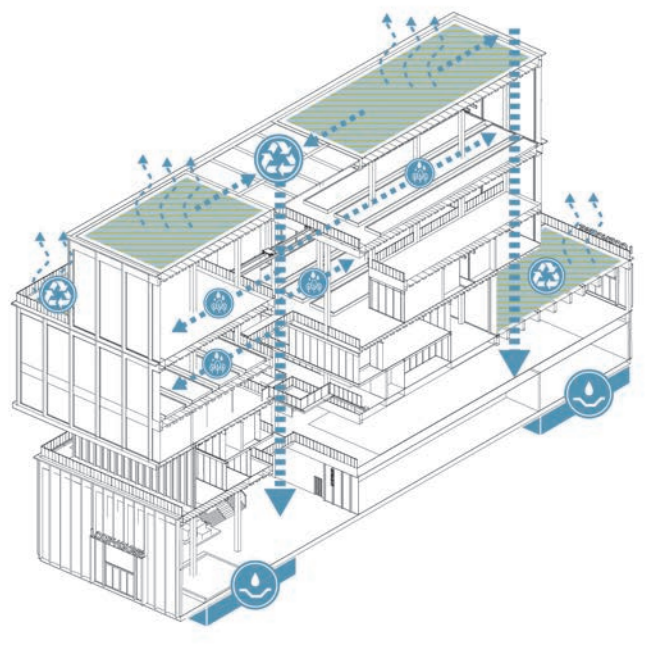
THE LOOPHOUSE

The LOOP-house is a new green icon for the neighborhood with the idea of greening your own neighborhood at its core. The greenhouse/tree nursery is a place of social interaction for everyone that has green fingers. The building is open and flexible for a diverse range of programs. With linking education to greening Pigtown, it becomes a hands on approach on dealing with the effect of climate change for the people by the people.

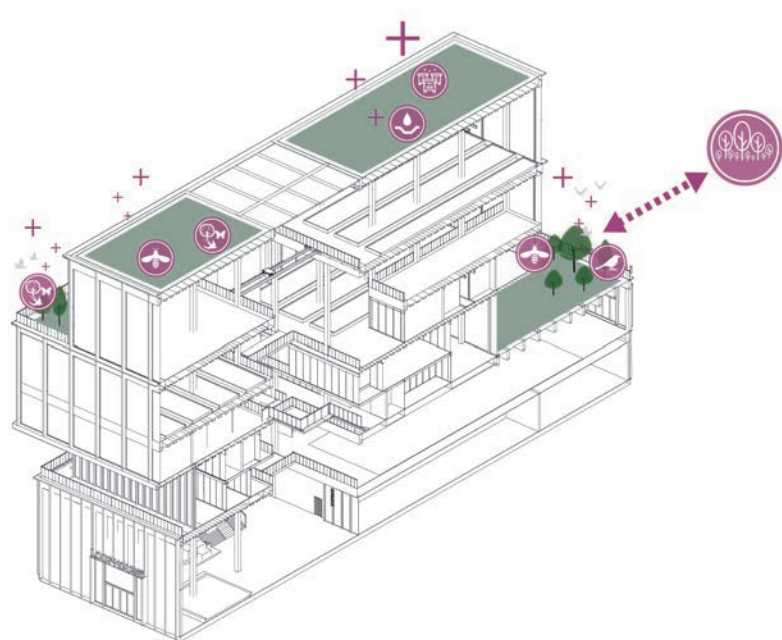
The building is based on the grid of 7.5 m x 7.5 m. This equals the distance between two trees to grow next to each other with maintenance space. The height of the floor are according to the type of vegetation. For the trees, this is between 6 and 10 meters. for plants the floor are adjusted to the dimensions of need. Plants and trees are selected based on their ability to survive in these climate conditions such as native species White Oak, American Linden and Maryland's state tree, Maple. If the trees and the plants are ready to go into the wild, they will be either sold at the retail shop on the ground floor or planted as a part of the greening of Pigtown LOOP.



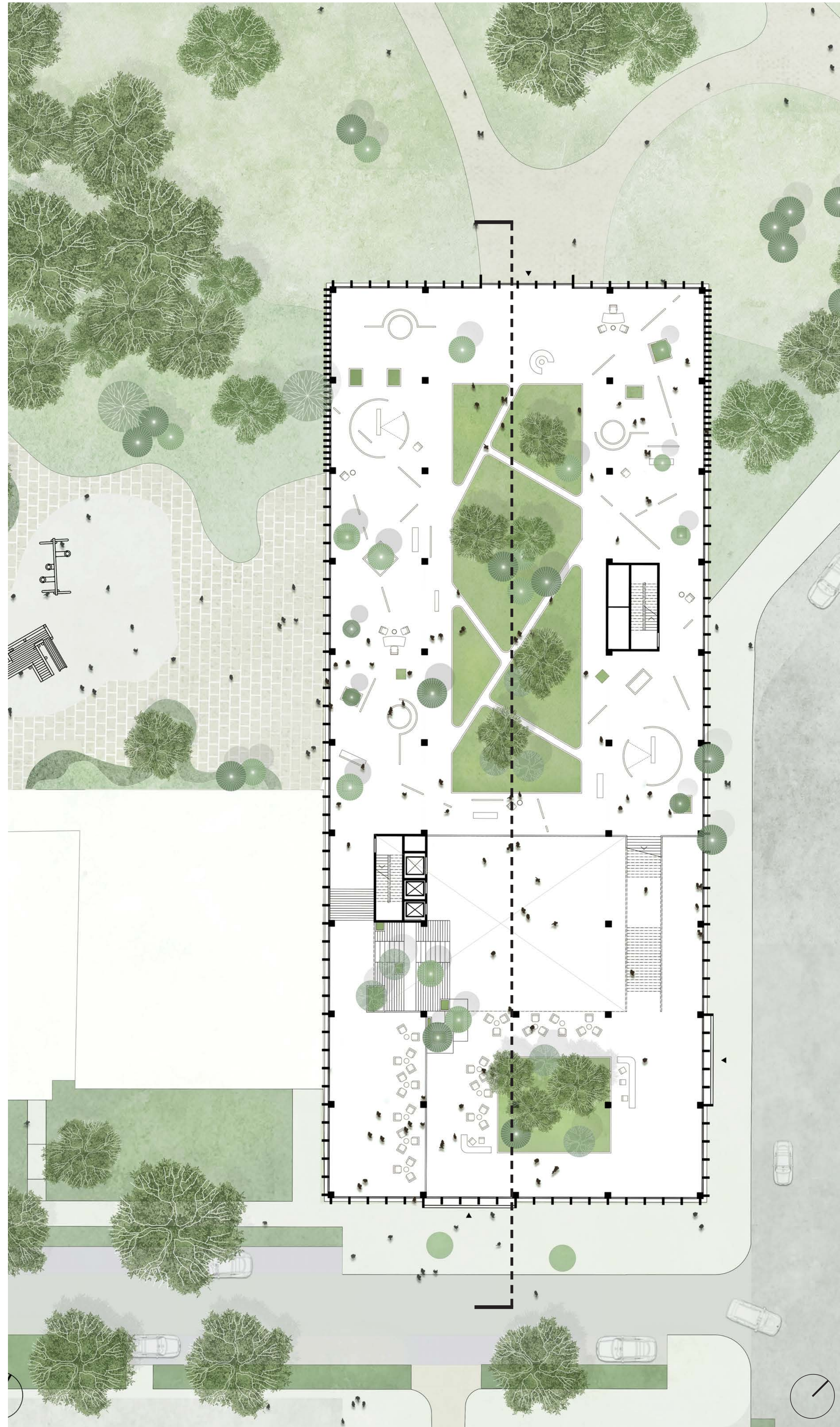
BUILDING ENVELOPE
The envelope is located adjacent to the SBCS on the parking lot. With the maximum dimensions of 31m to 75m.



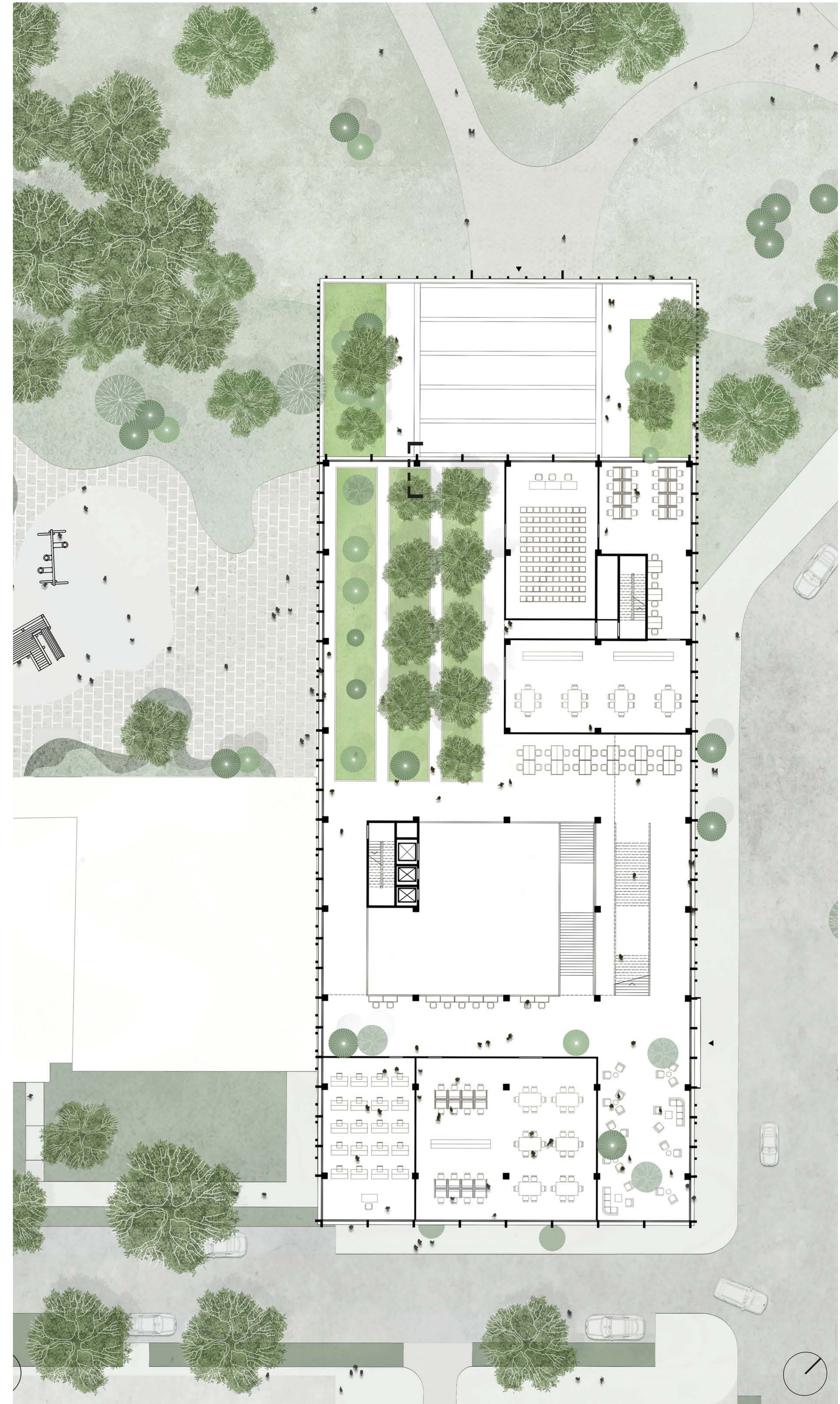
BUILDING ENVELOPE
The envelope is located adjacent to the SBCS on the parking lot. With the maximum dimensions of 31m to 75m.



BUILDING ENVELOPE
The envelope is located adjacent to the SBCS on the parking lot. With the maximum dimensions of 31m to 75m.



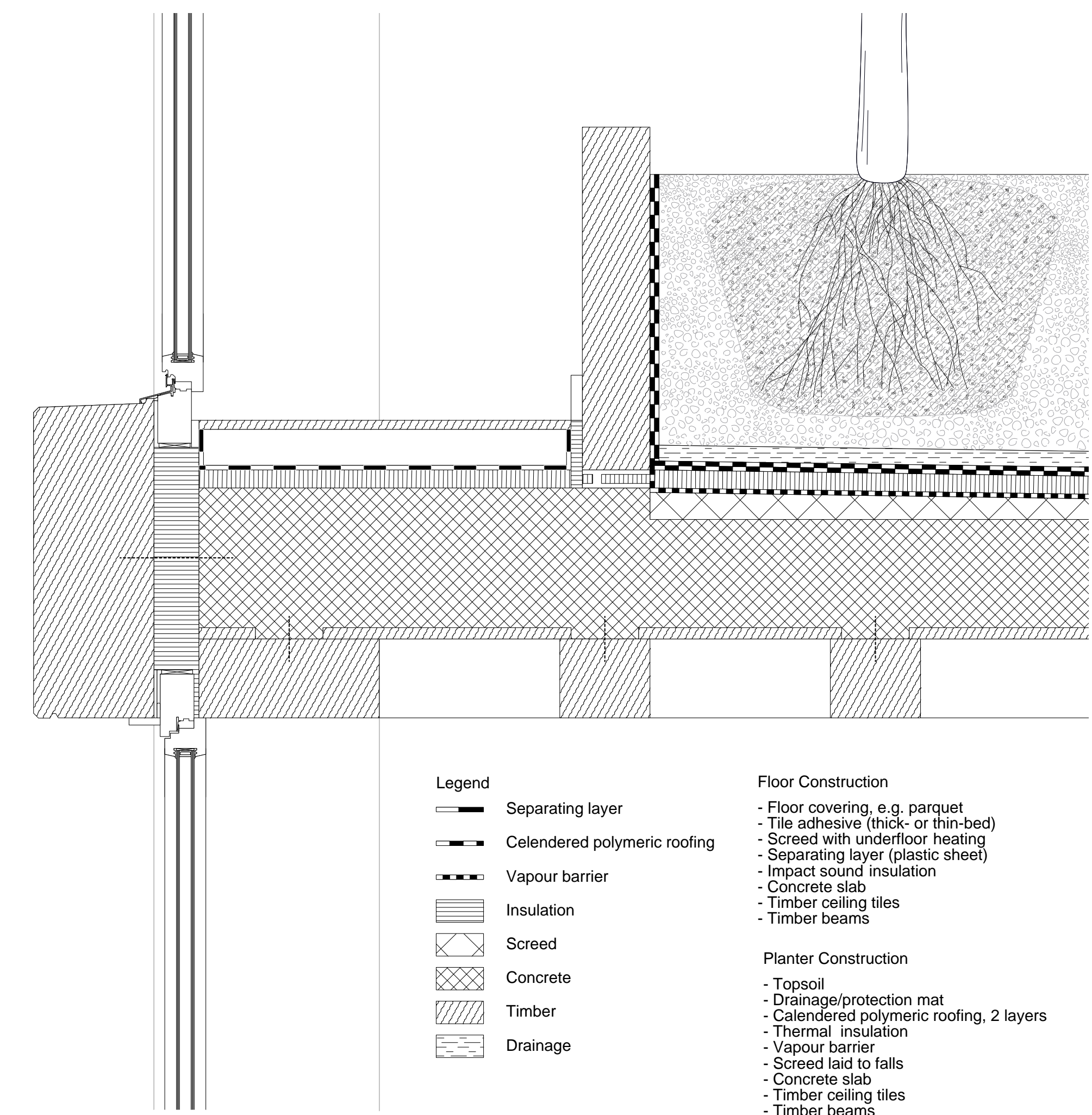
FLOORPLAN LOOPHOUSE: GROUND FLOOR 1:200



FLOORPLAN LOOPHOUSE: 3RD FLOOR 1:200



SECTION LOOPHOUSE 1:200



CONNECTION DETAIL WALL, FLOOR, PLANTER 1:10

- | | |
|--|---|
| <ul style="list-style-type: none"> — Separating layer — Celendered polymeric roofing — Vapour barrier — Insulation — Screed — Concrete — Timber — Drainage | <p>Floor Construction</p> <ul style="list-style-type: none"> - Floor covering, e.g. parquet - Tile adhesive (thick or thin-bed) - Screed with underfloor heating - Separating layer (glassic sheet) - Impact sound insulation - Concrete slab - Timber ceiling tiles - Timber beams <p>Planter Construction</p> <ul style="list-style-type: none"> - Topsoil - Drainage/protection mat - Celendered polymeric roofing, 2 layers - Thermal insulation - Vapour barrier - Screed laid to falls - Concrete slab - Timber ceiling tiles - Timber beams |
|--|---|



The LOOPHOUSE:
view of the nursery



The LOOPHOUSE:
view of the entrance