

# **PARK LIVE**

**transfer of living inside to the outside**

Rotterdamse Academie van Bouwkunst  
studio The Amenity | december 2020

## AMENITY

Amenities are **taken for granted, are often unnoticed** and have **social importance**.

The word “amenity” is so **abstract** that we often don’t know how to interpret its meaning. Is it function only as in space, function as in a tool, or is it a combination?

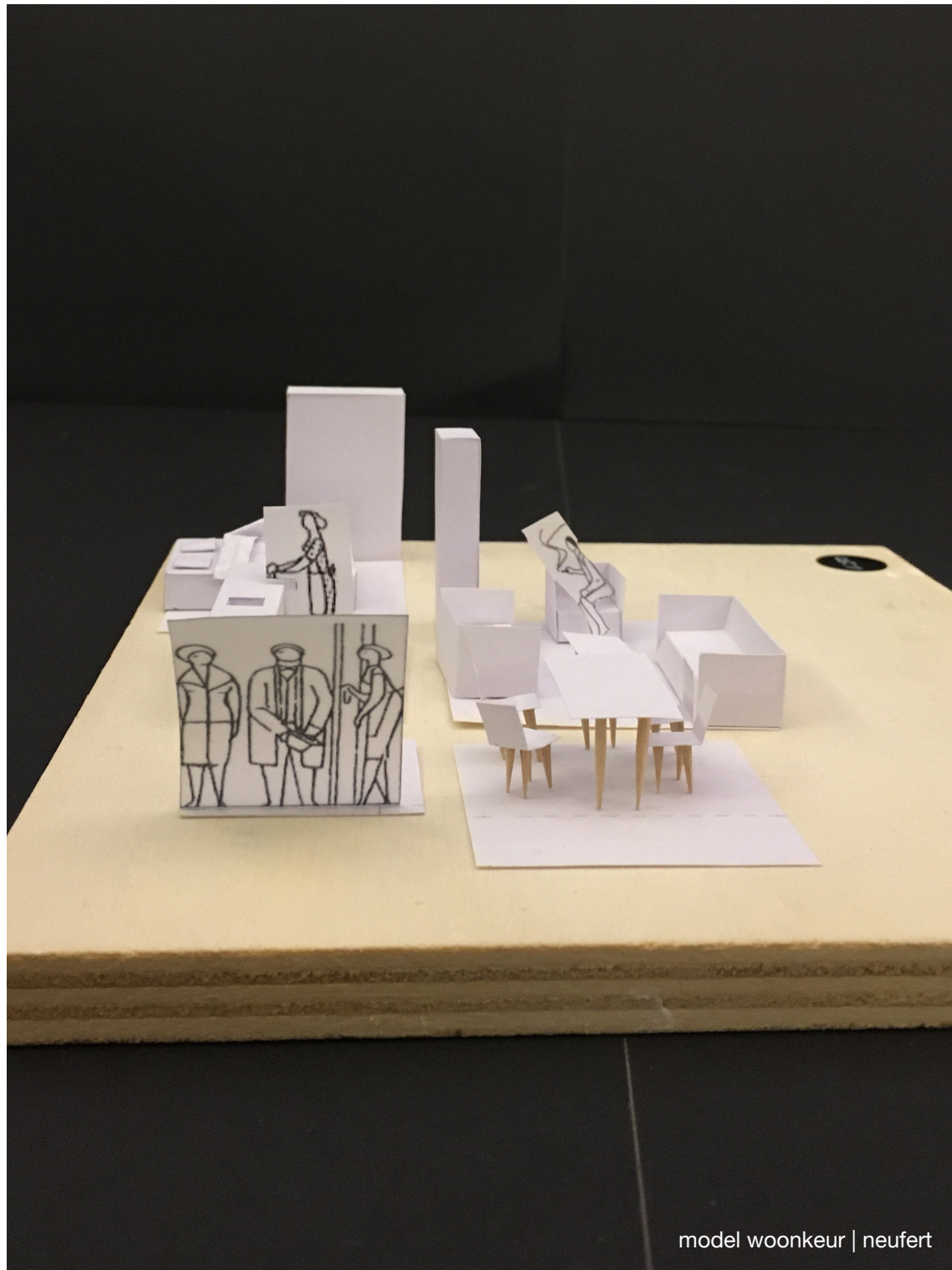
It has a function that **supports our daily life**, that gives us **quality** of living and that we **depend on** because it is part of our ritual. Whether it is to **support, entertain** or **inform** us and although it is often **shared**, we **privatized** it too.

**82%** of the buildings in  
Oude Westen have a  
**living function**



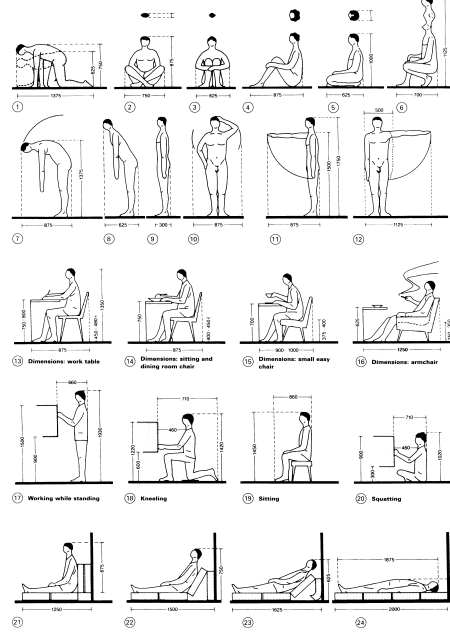
■ living  
■ amenity on ground floor  
living above

# Research living

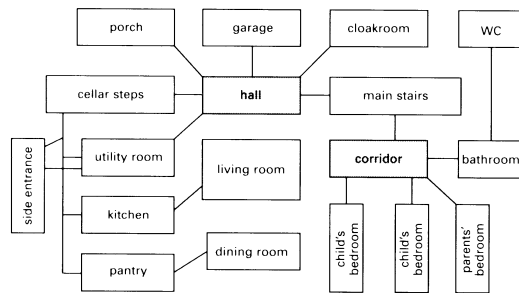
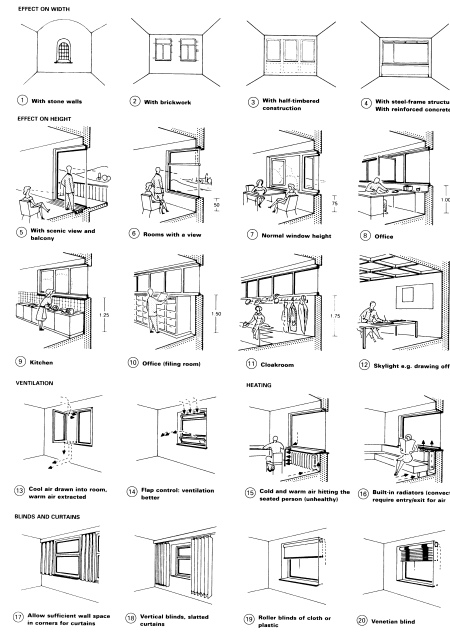


**MAN: DIMENSIONS AND SPACE REQUIREMENTS**

In accordance with normal measurements and energy consumption



**WINDOWS: ARRANGEMENT**

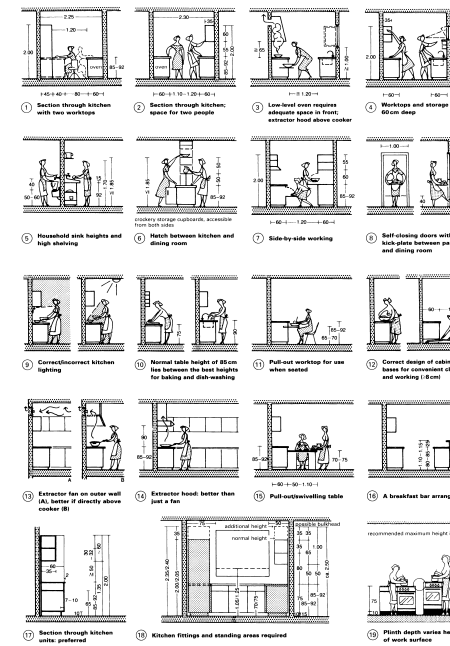


1 Relationships between rooms

principal use of space	principal period of use (desired orientation of the sun)	
living area	afternoon to evening	
eating/breakfasting room	morning to evening	
children's room	afternoon to evening	
bedroom	night (morning sun desired)	

1 Orientation of living spaces

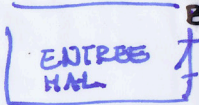
**KITCHENS**



OVERBRUGGING.

BEINA BUITEN.

BEINA BINNEN



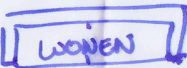
PERSONLIJK.  
BESCHERMING.  
Privacy voor rest huis.

OPslag  
Praktisch.

DECORATIEF / IDENTITEIT.

HUISKAMER  
OF WOONKAMER  
GENOEGD?  
WAAROM?

DE Ruimte waar  
je Naar toe gaat  
als je Niet ergens  
anders HOERT te zijn.



SAMENKOMST.

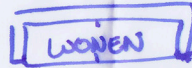
AL HET ANDERE  
EN HET ZELFDE.

COMFORT.

IDENTITEIT. -> WIE BEN JE.

HUISKAMER  
OF WOONKAMER  
GENOEGD?  
WAAROM?

DE Ruimte waar  
je Naar toe gaat  
als je Niet ergens  
anders HOERT te zijn.



SAMENKOMST.

AL HET ANDERE  
EN HET ZELFDE.

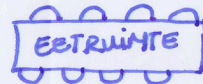
COMFORT.

IDENTITEIT. -> WIE BEN JE.

CONSUMEREN

ZITTEN

GESPREKKEN  
↓  
FILOSOFEREN  
KIETSEN



SAMENKOMST.

ONDER GESCHOVEN  
KINDJE in de  
WOONRUIMTES.

SCHRIJVEN  
WERKEN  
LEZEN

KOPELING MET  
KEUKEN.

CONCENTRATIE  
AMUSEMENT.  
ONTSPANNING

↳ VERWOERD?

OPBERGEN.

~~SAMEN~~  
INDIVIDUEEL.

Een huis kan  
zonder Alles  
Behalve de  
slaapkamer  
of juist het BED.

↳ geld dat  
voor een buurt  
ook?

PERSONLIJK



VERWERKING.  
ONTSPANNING.

SLAPEN  
LEZEN  
INTIMITET.

HUIS.

Ruimte  
om te ZITEN.

\* WERKEN.  
ONTVANGEN  
EIGENHEID

DE Ruimte die  
Alles zou kunnen  
zijn als je het  
ANDERE Niet doet.  
N.U.V. KOKEN & BAD.

OPBERGEN

CREATIEF / INNOVATIEF.

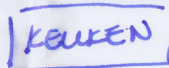
BEWAAREN

CRICREN  
MAKEN  
ZORGEN

HYGIENE | BEREIDING

ONE ROOM  
APP. BV.  
KLOOSTER

SCHOONMAKEN  
OPRUIJEN  
↳ Niet DOEN  
van wat er was.



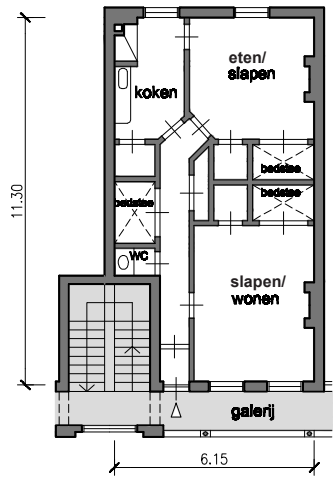
MACHINE?

→ kan je dan  
ook zeggen  
dat een  
keuken is  
getgrenst

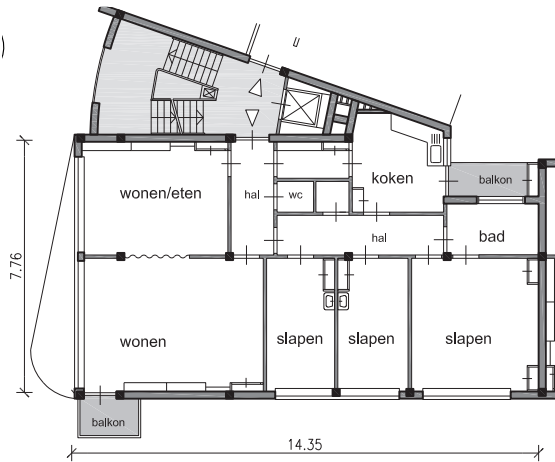
How does **living** take place  
**in** the neighbourhood **Oude  
Westen**?



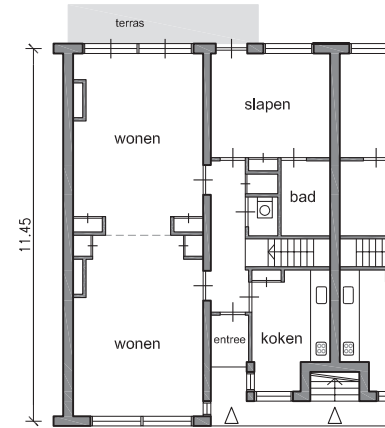
# TYOLOGY OUDE WESTEN



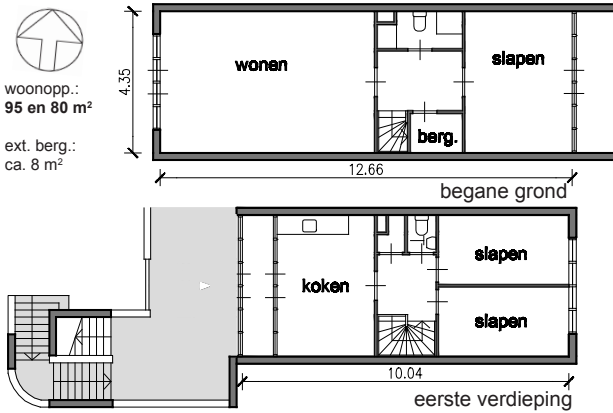
diergaardesingel | 1888



nieuwe binnenweg | 1930

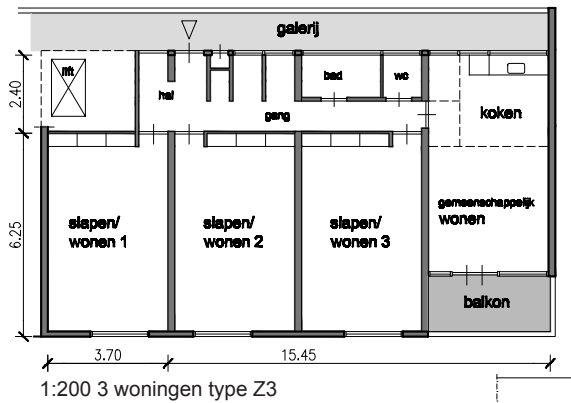


breitnerstraat | 1936



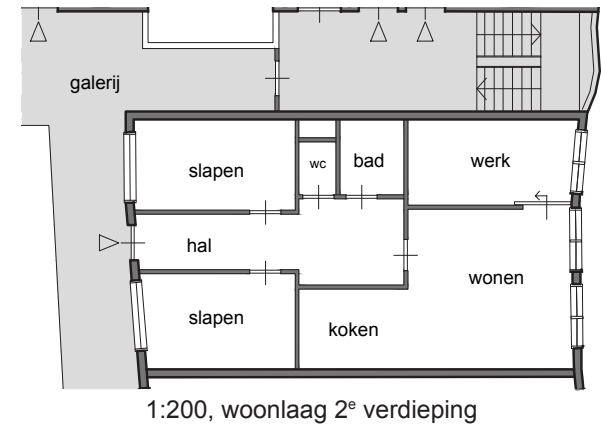
gouvernestraat | 1980

woonopp.:  
95 en 80 m<sup>2</sup>  
ext. berg.:  
ca. 8 m<sup>2</sup>



kruisplein | 1985

1:200 3 woningen type Z3



Kruisboog | 1991

1:200, woonlaag 2<sup>e</sup> verdieping



diergaardesingel | 1888

breitnerstraat | 1936

Kruisboog | 1991

# PROGRAM OUDE WESTEN



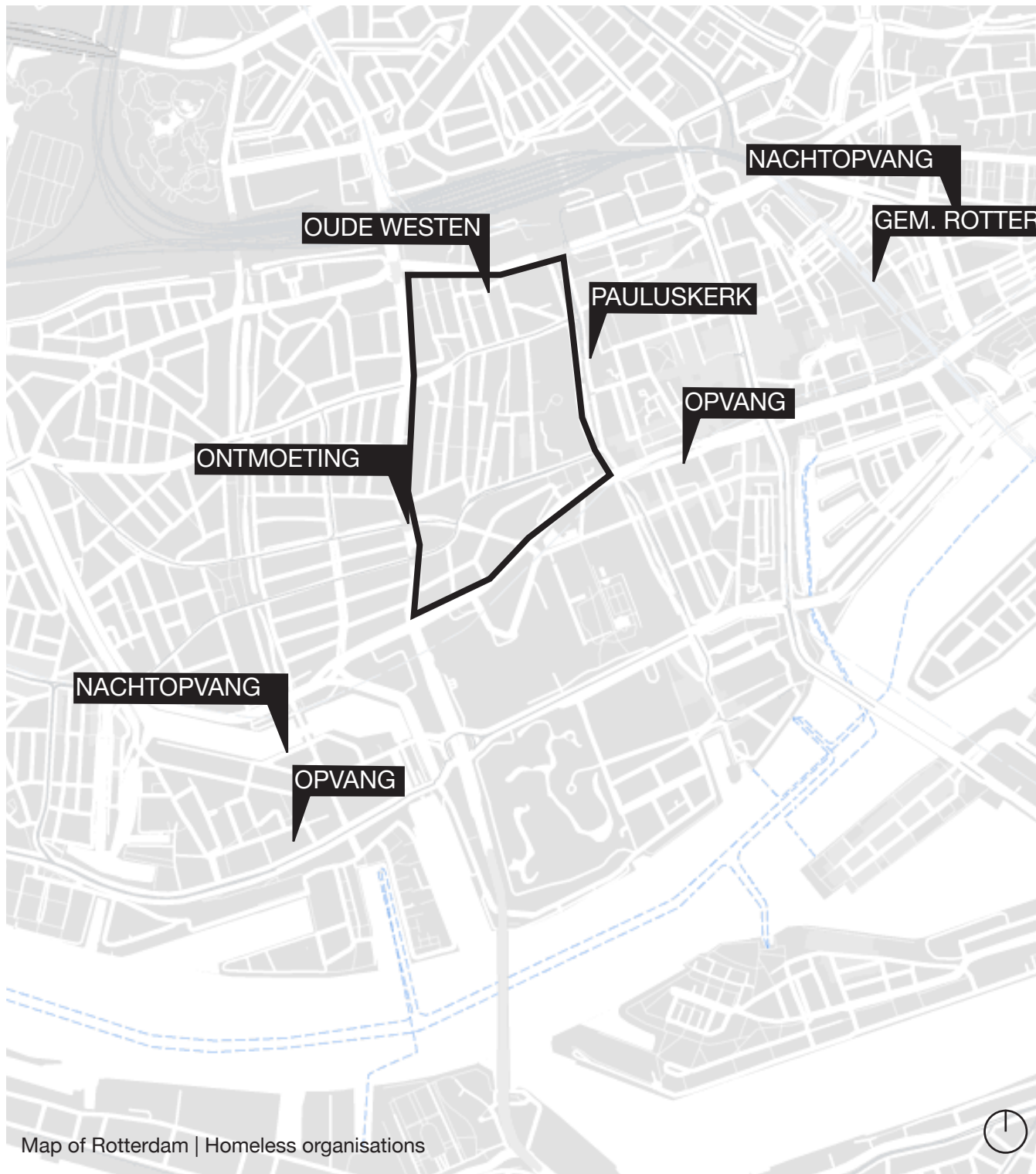
- Cultureel
- Kantoor
- Maatschappelijk
- Wonen
- Educatie
- Gemengd
- Horeca
- Winkels
- Sport
- Zorg
- Buurthuis

When we talk about **living in Oude Westen**,  
we **also** talk about **people who live on the street**.

# HOMELESSNESS

**40.000 homeless in NL**  
**15.000 in de 4S**  
**4000 in Rotterdam. (2018)**

**outdoor sleepers | 109**  
**sofa sleepers | 1407**  
**night care | 2096**  
**unknown | 398**



Map of Rotterdam | Homeless organisations

# **LIVING IN OUDE WESTEN**

# LIVING AMENITIES OUDE WESTEN

## PUBLIC

### LIVING ROOM



### WASH ROOM



### DINING ROOM



## SEMI - PUBLIC

### LIVING ROOM



### KITCHEN





# THE NEIGHBORHOOD AS A HOME

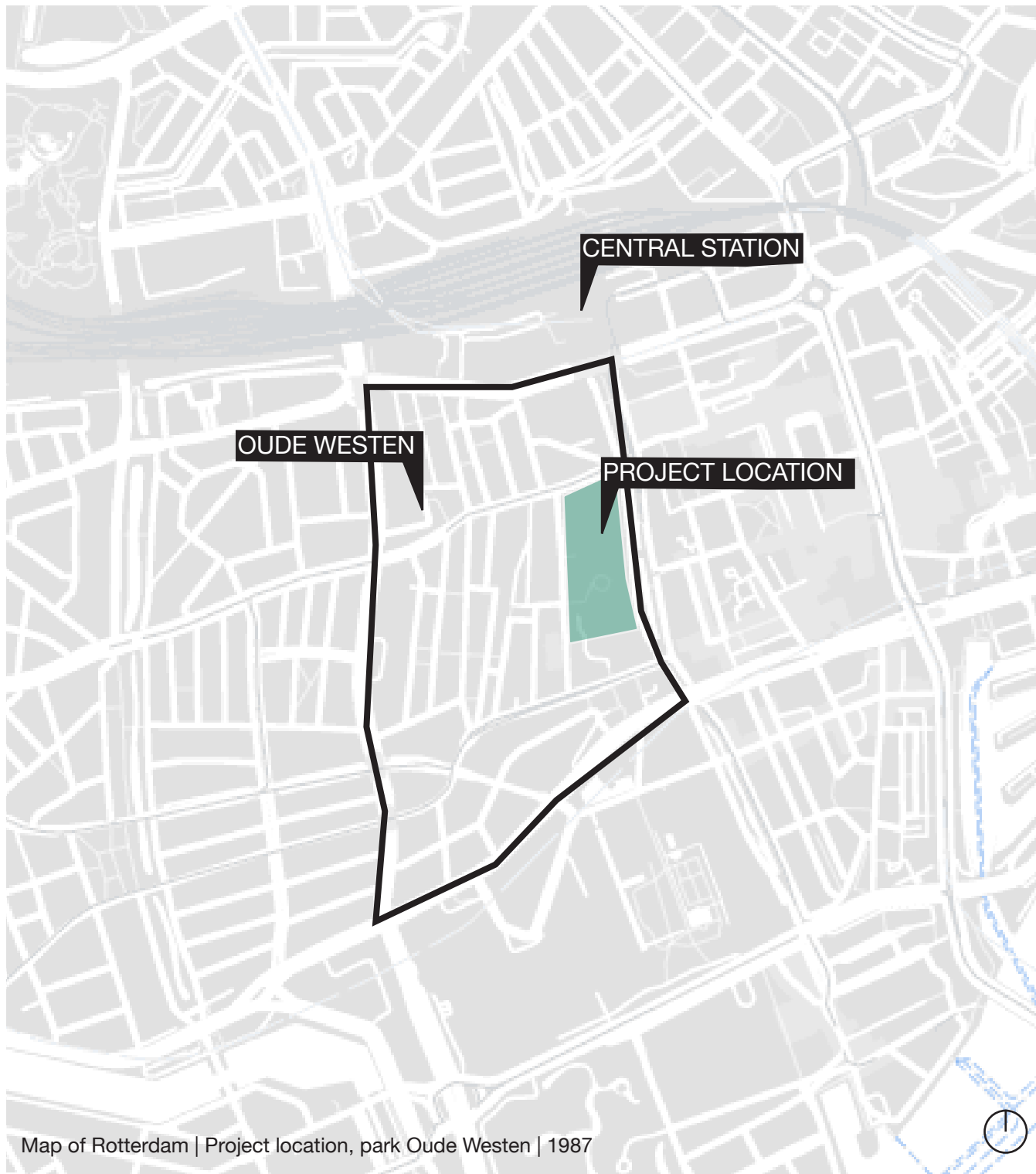


**Amenities** are not defined as a space but as **a tool**.  
Tools which give living **comfort** and are part of or  
own **ceremonial meaning**. The tool as **an element**  
and the tool as a piece of **furniture**. Where the space  
functiones as a decor.

# **PARK LIVE**

**transfer of living inside to the outside**

**PARK LIVE** is about amenities related to **living**.  
Living is an **activity** which is **inside or outside** in  
the space of the **room**, the **house**, the **street**, the  
**neighbourhood**, the **city** and its **surroundings**.

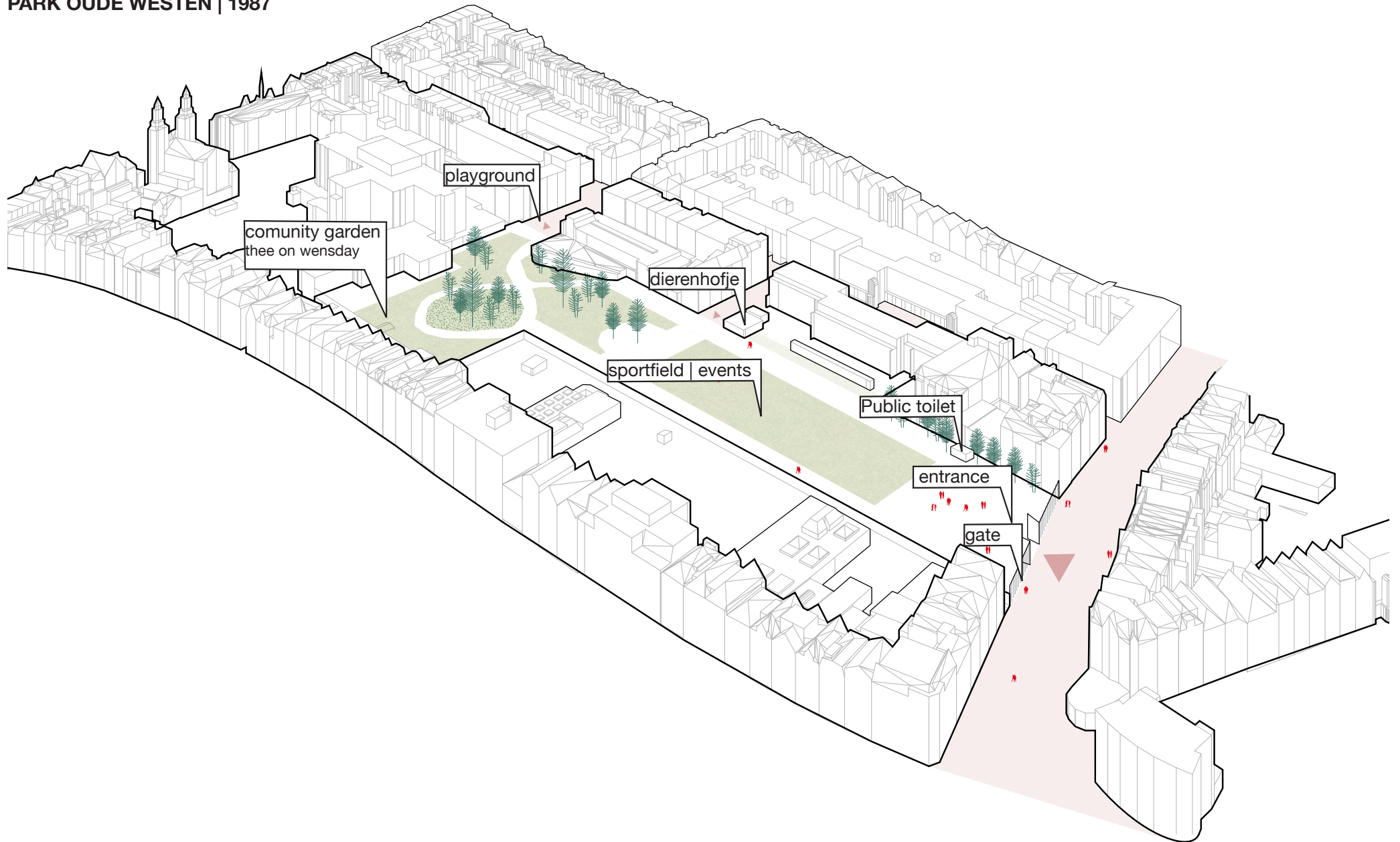


Map of Rotterdam | Project location, park Oude Westen | 1987

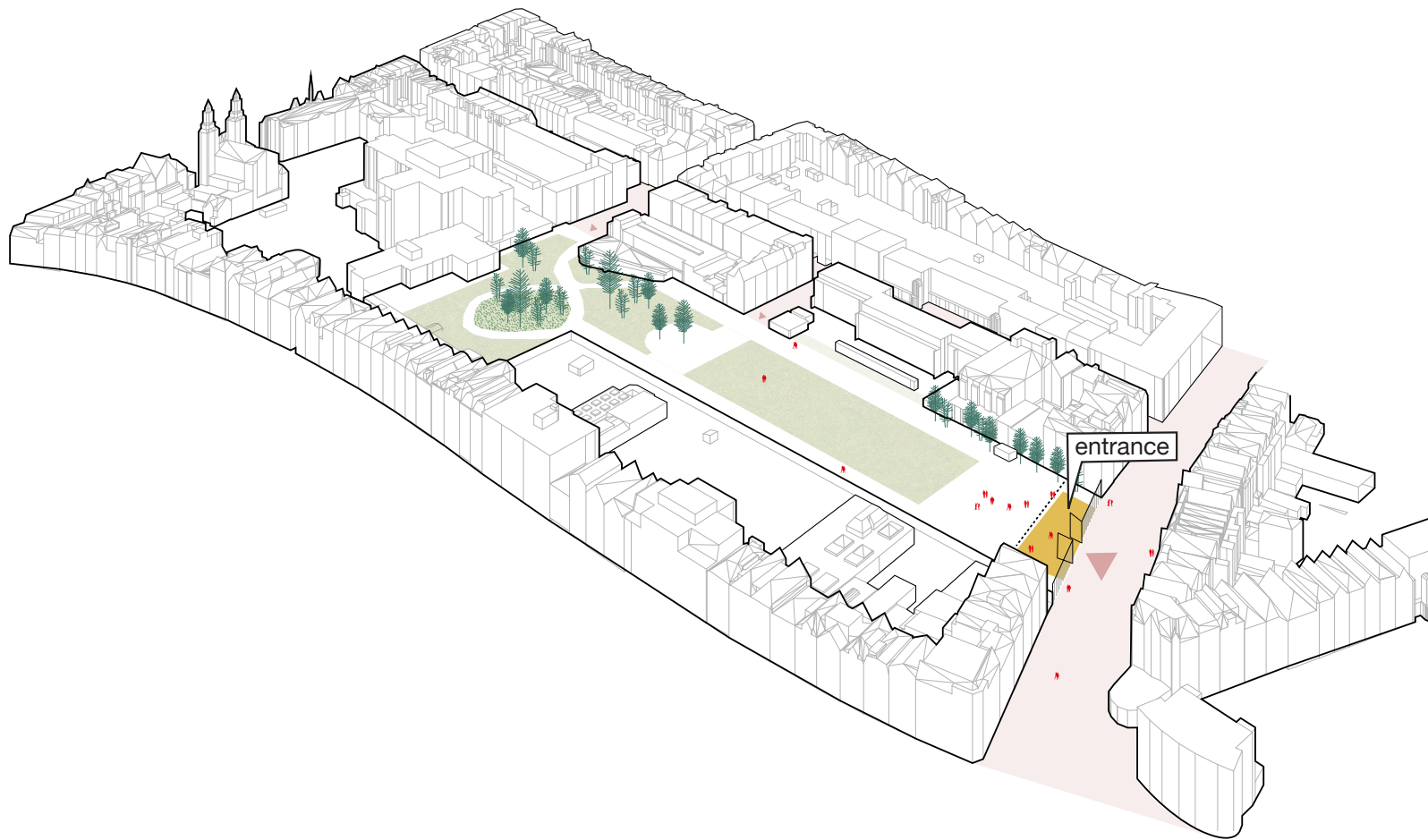


# AMENITIES IN THE PARK

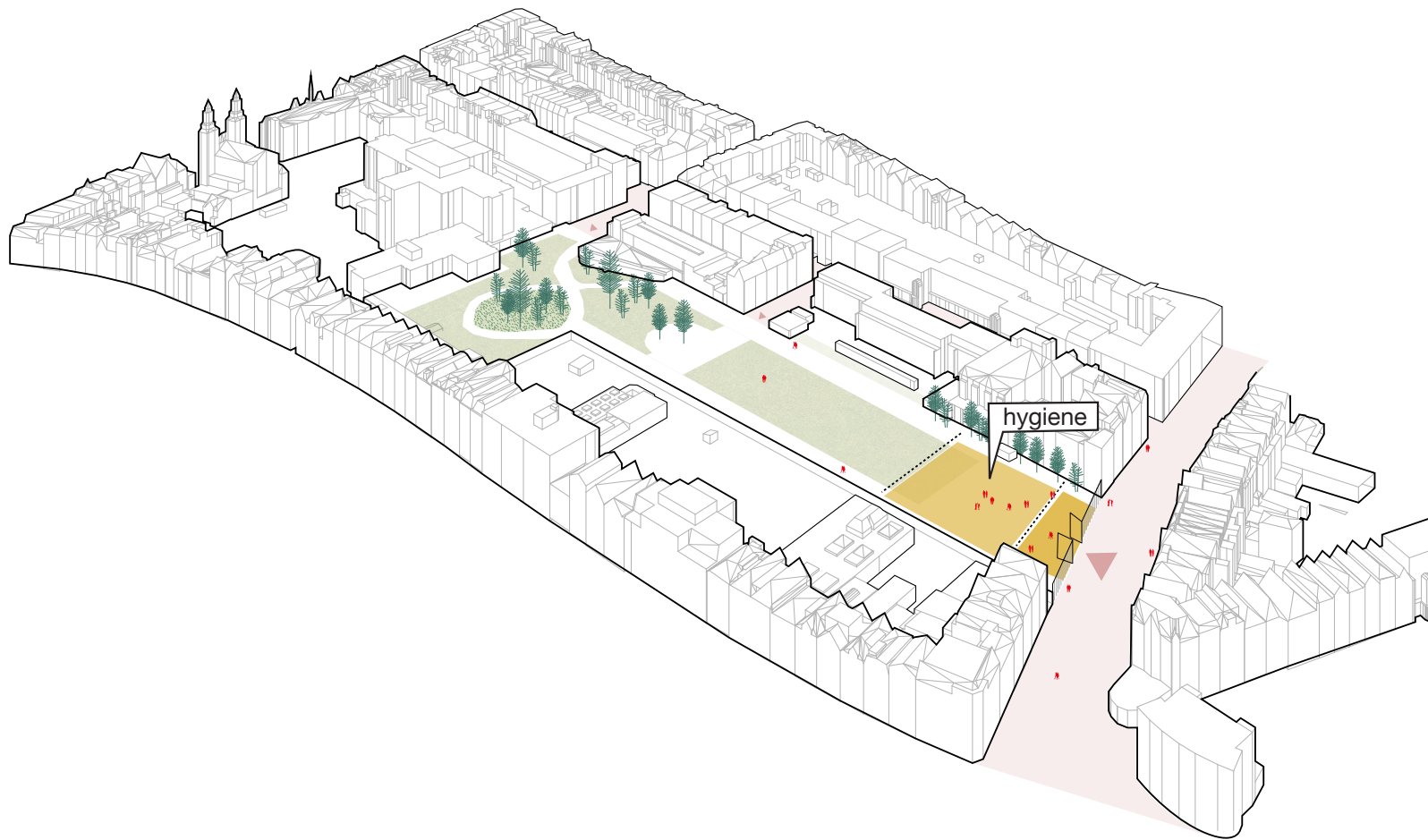
PARK OUDE WESTEN | 1987

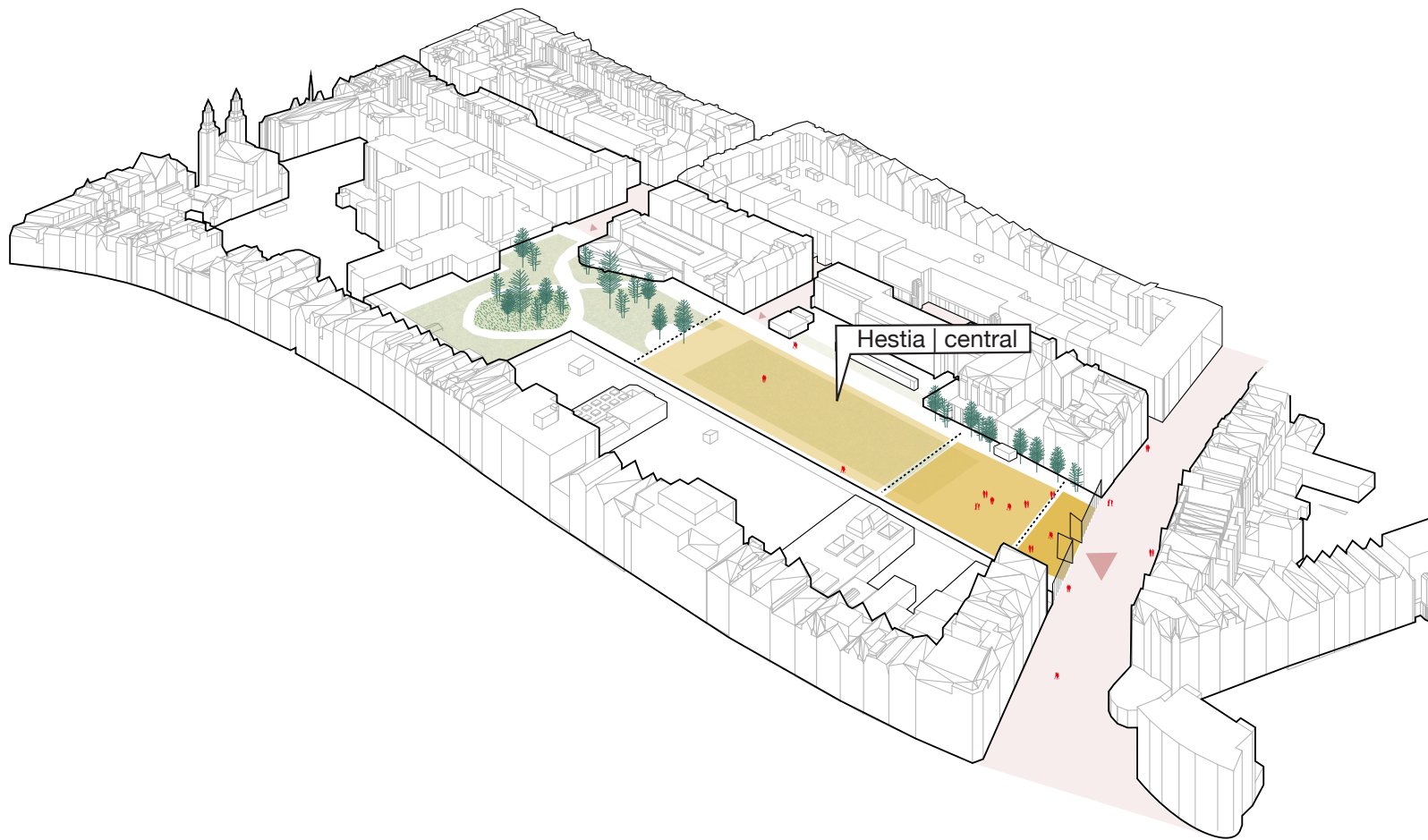


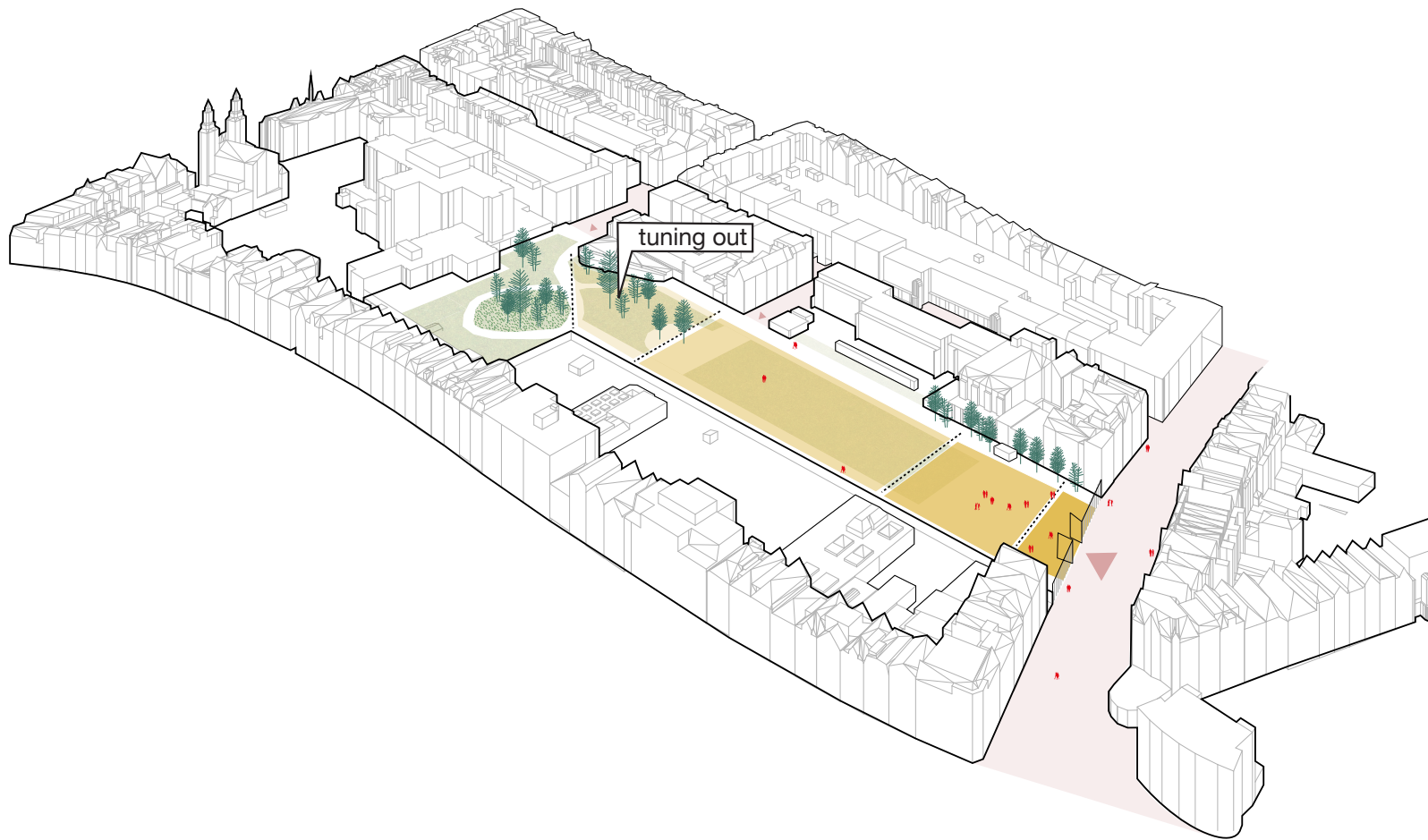
**PARK LIVE** is a **translation of the living space into the park**, which **supports living** in daily life for everybody.

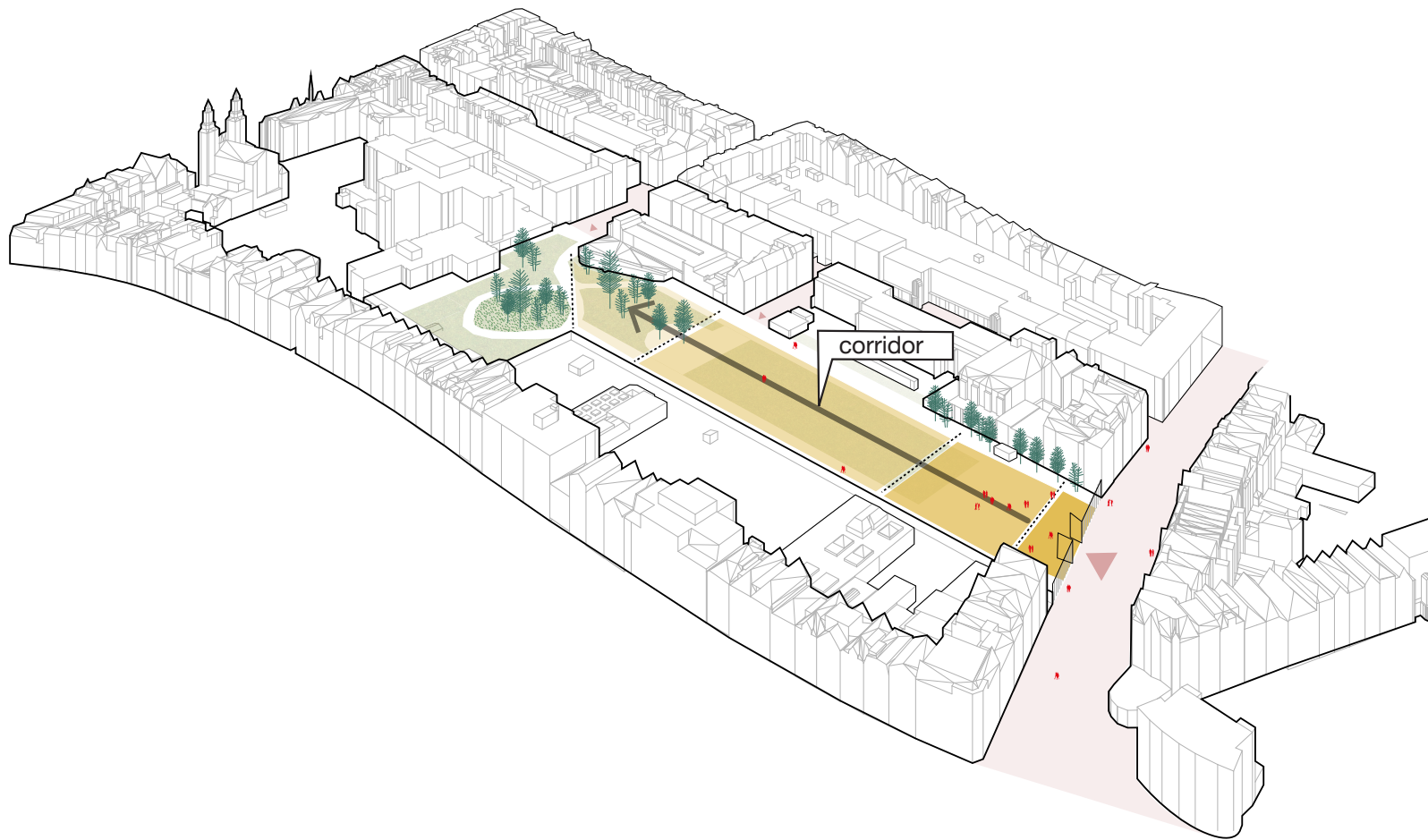






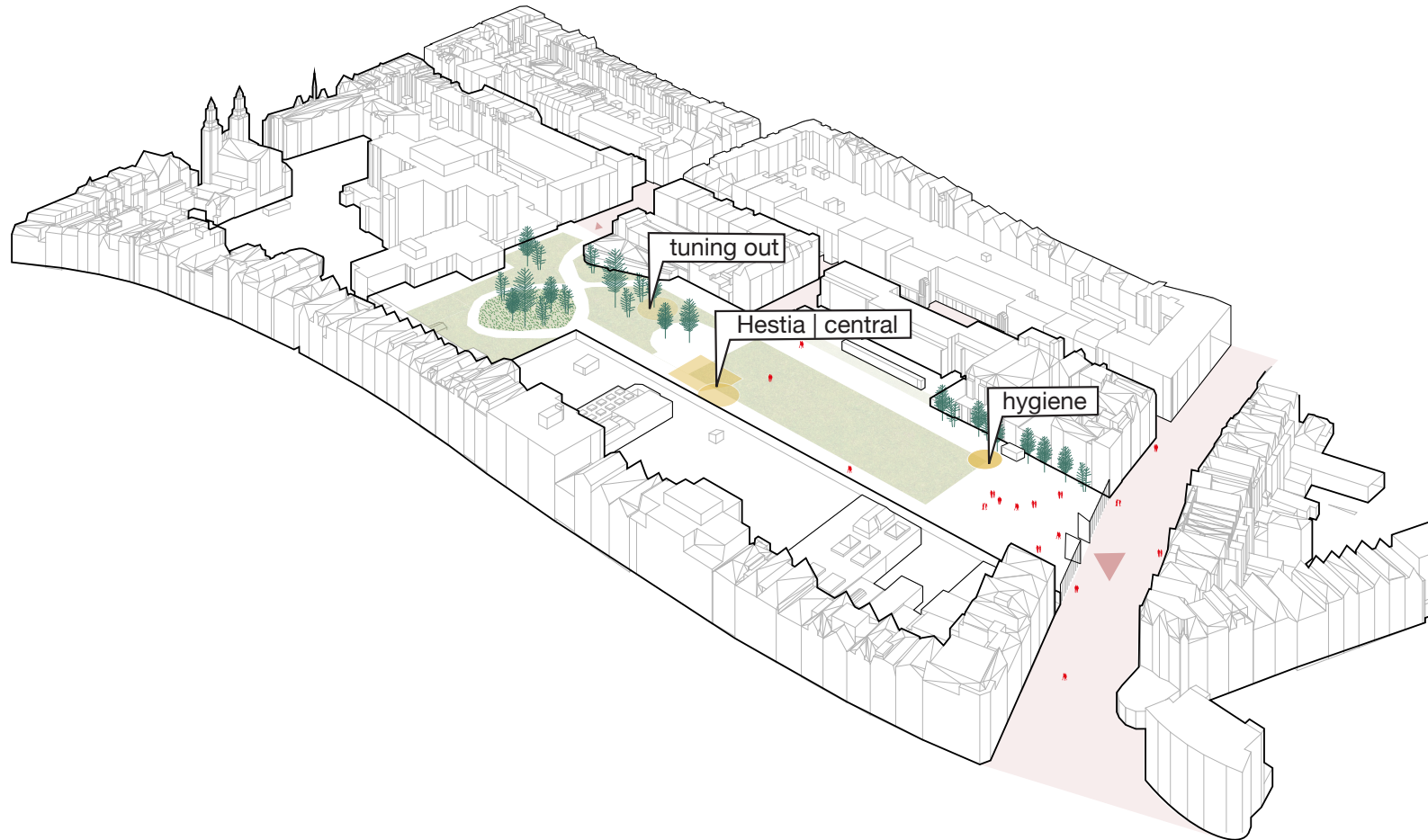


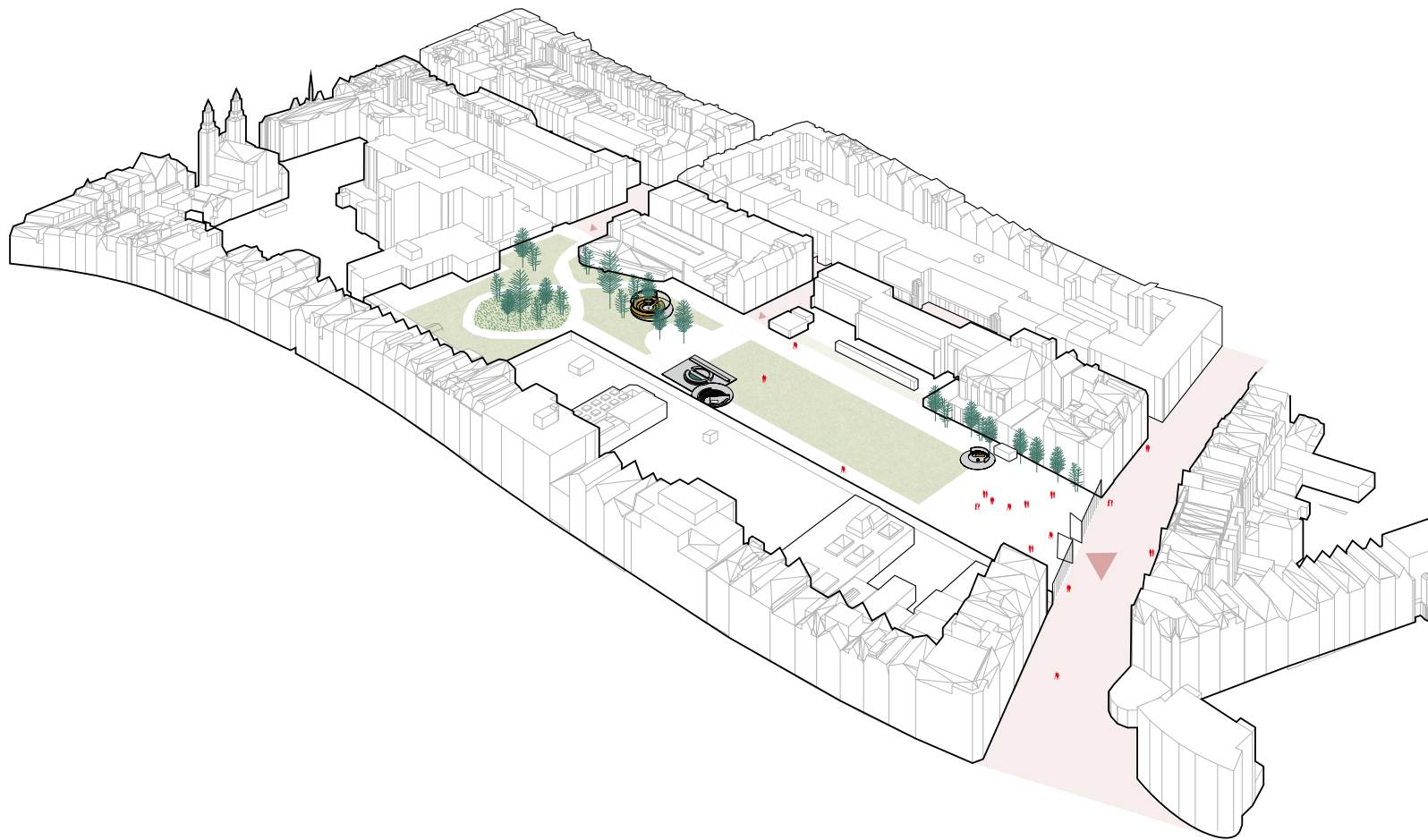




How the **private living room becomes a public domain area with the tools for living** as an element and as furniture, for collective use or private moments.

# How the private living room becomes a public domain area....





...with the tools for living as an element...



WASH ROOM | HYGIENE



LIVING ROOM | HESTIA



BED ROOM | TUNING OUT



DINING ROOM | HESTIA



hygiene  
relaxing

## **WASH ROOM | WATER**

## **BED ROOM | LYING DOWN**

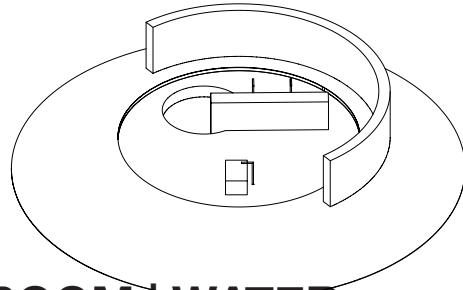
storage  
relaxed  
reading  
just tuning out

warming up  
sitting  
making food  
reading books

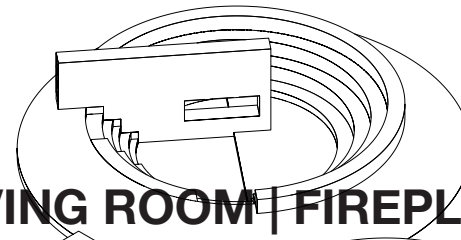
## **LIVING ROOM | FIREPLACE**

## **DINING ROOM | USE OF TABLE AND SITTING**

standing  
games  
eating  
making  
conversations etc.

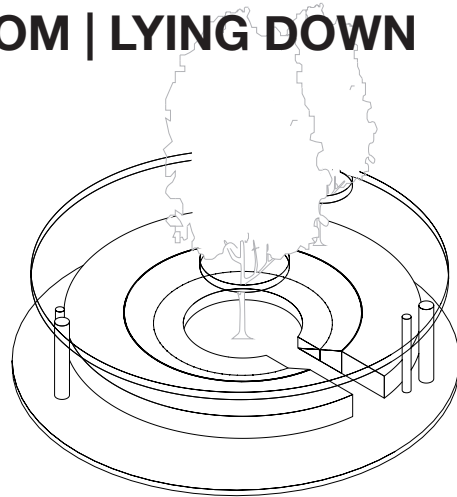


**WASH ROOM | WATER**

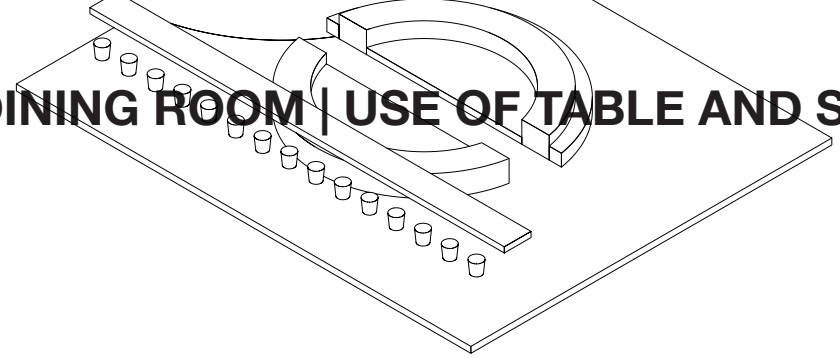


**LIVING ROOM | FIREPLACE**

**BED ROOM | LYING DOWN**

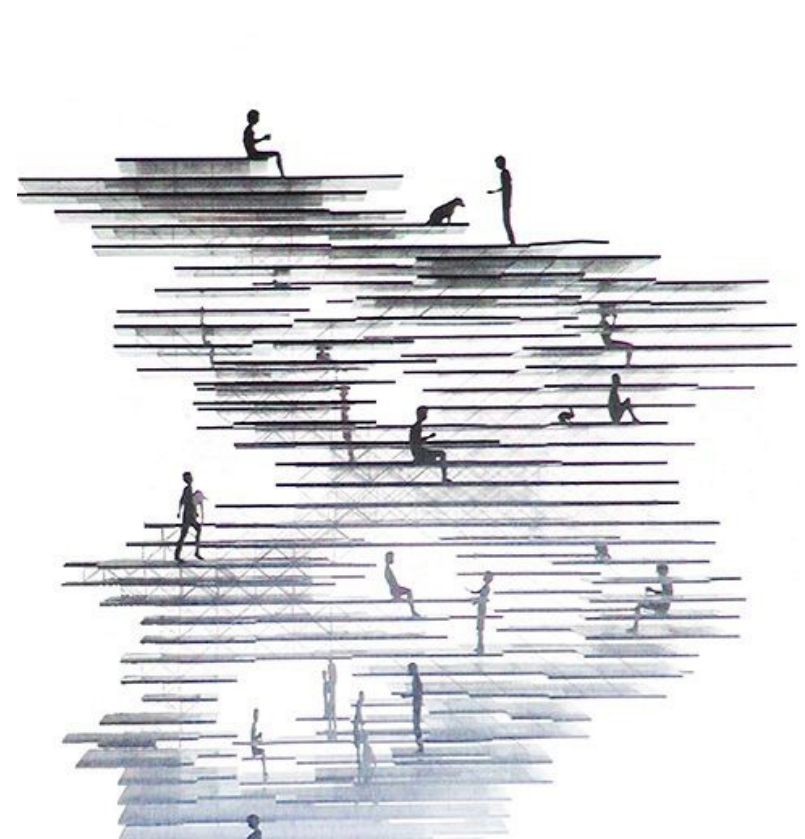


**DINING ROOM | USE OF TABLE AND SITTING**



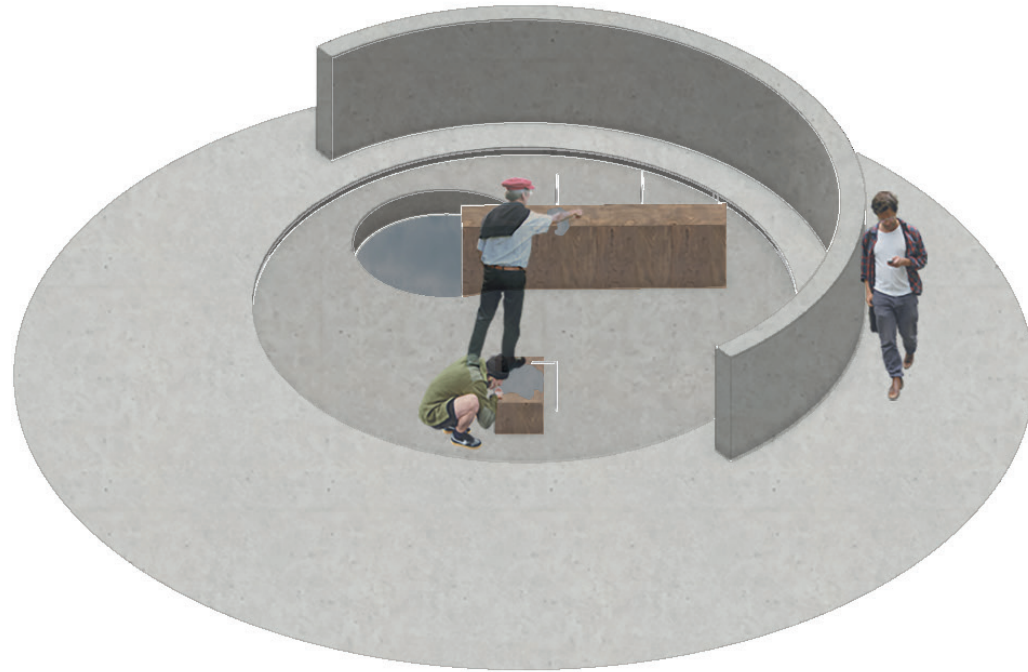


...and furniture for **collective use** and **private moments**.

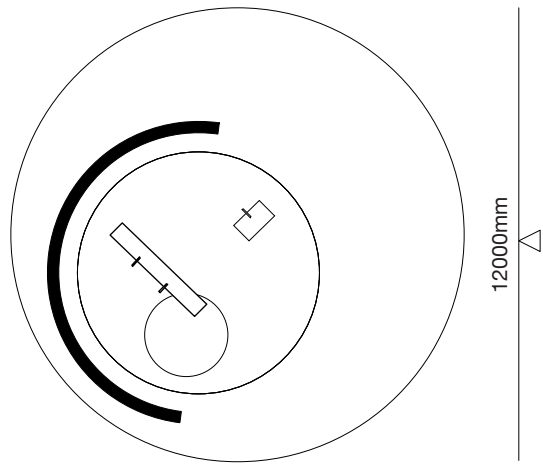


Reference | wooden house, Sue Fujimoto

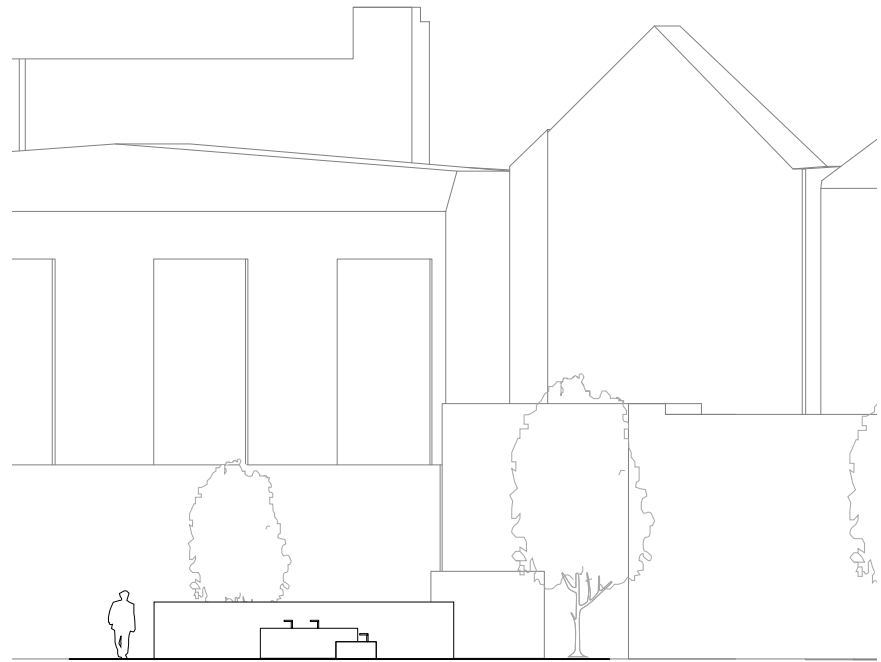
# HYGINE | WASH ROOM



# HYGINE | WASH ROOM

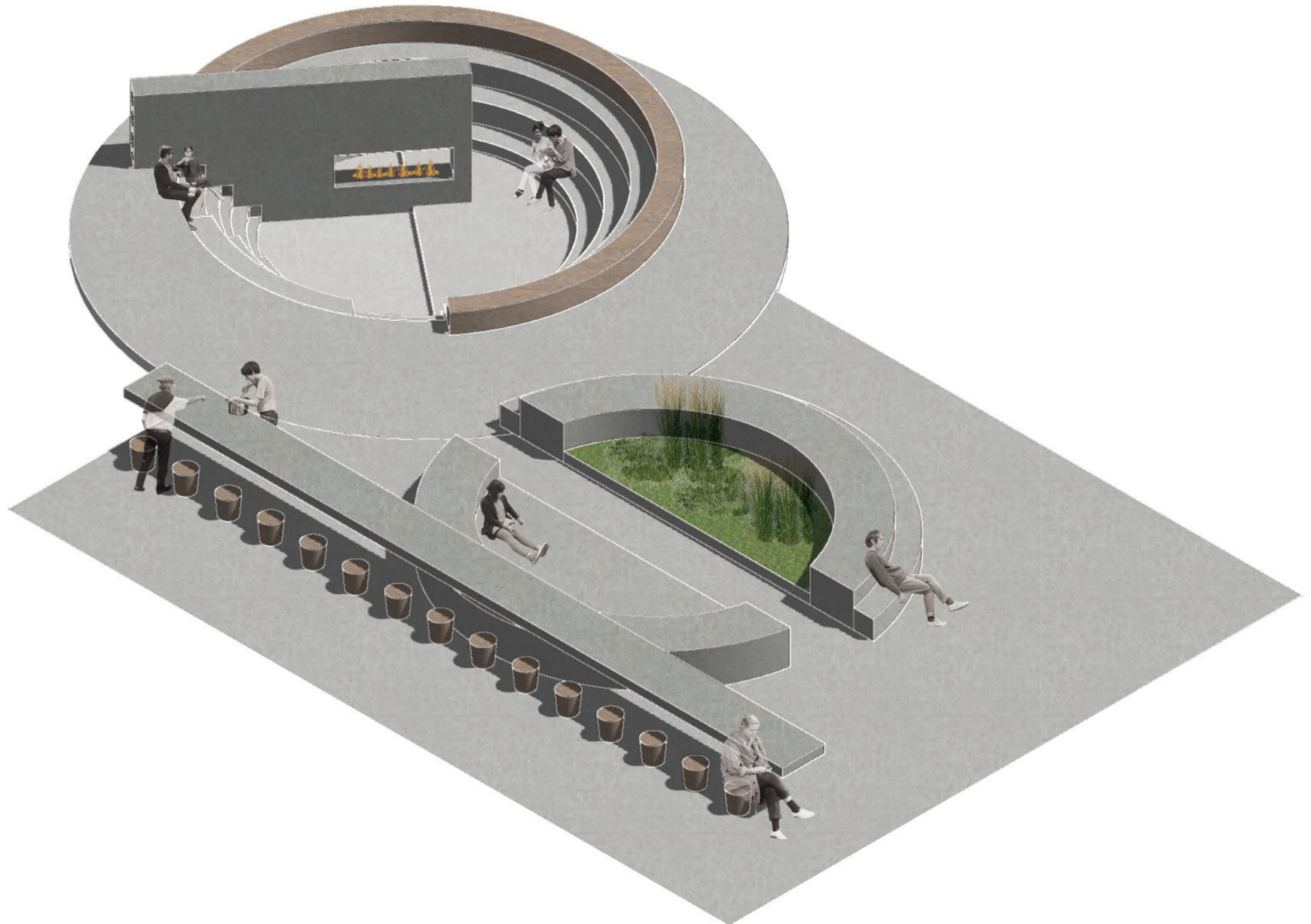


floorplan | schale 1.200

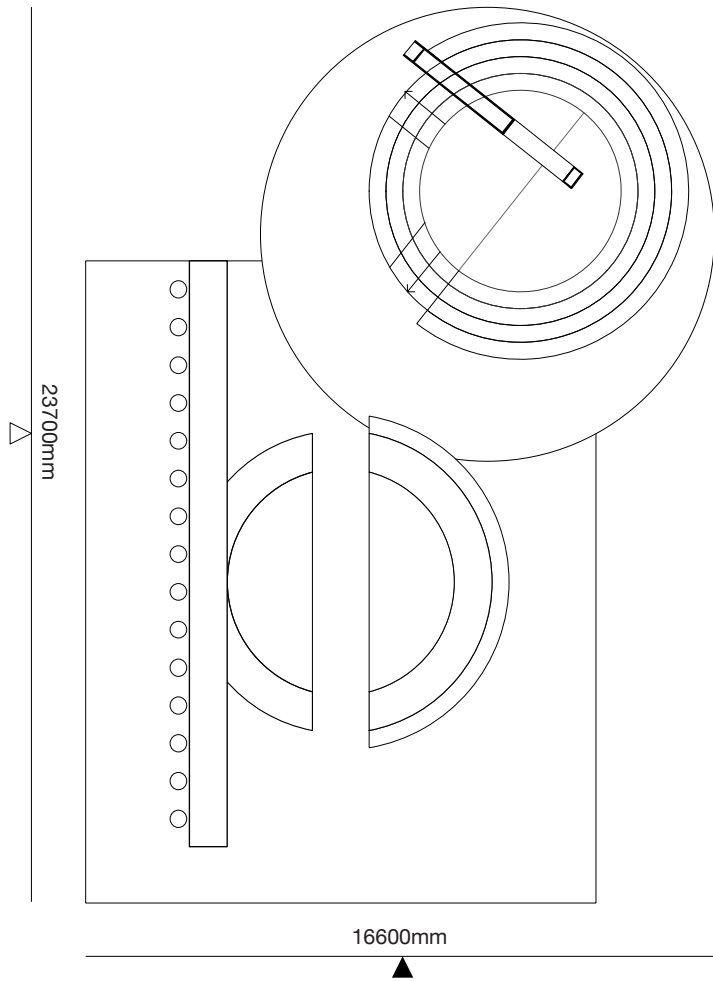


△ elevation | schale 1.500

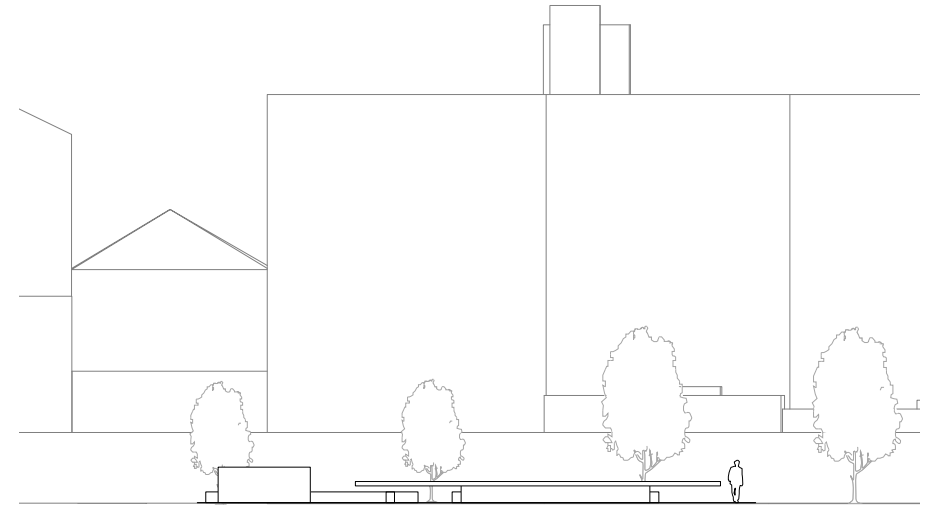
# HESTIA | LIVING ROOM



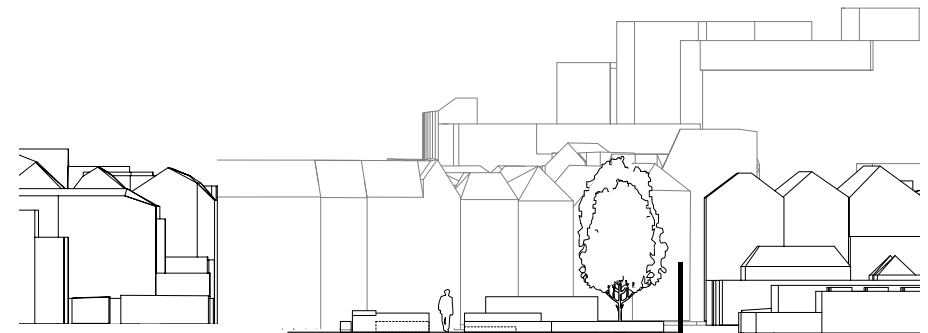
# HESTIA | LIVING ROOM



floorplan | schale 1.200



▲ elevation | schale 1.200



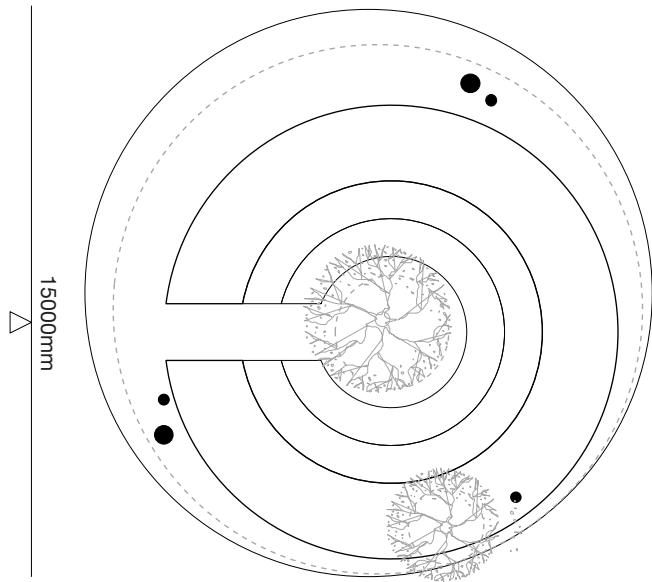
▲ elevation | schale 1.200



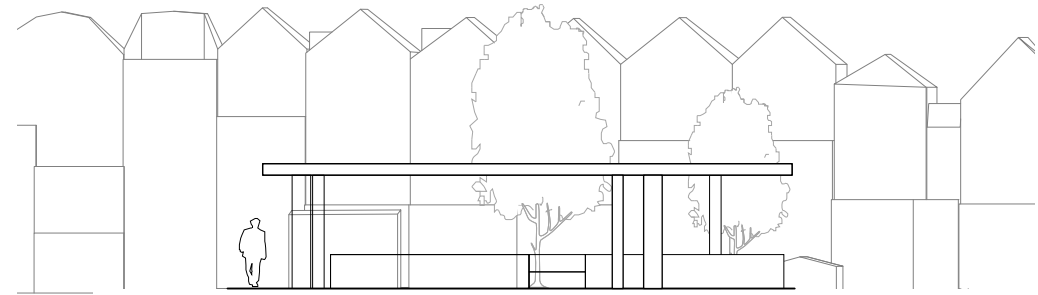
# TUNING OUT | BED ROOM



# TUNING OUT | BED ROOM



floorplan | schale 1.200



△ elevation | schale 1.200

# MANIFEST

82% of the buildings in Oude Westen have a living function

Therefore I researched Living.

How does living happen in the neighbourhood Oude Westen.

When we talk about living, we also talk about people who live on the street.

Amenities are not defined as space, but as a tool. Tools which give living comfort and are part of our own ceremonial meaning. The tool as an element and as a piece of furniture, where the space functiones as a decor.

PARK LIVE is about amenities related to living.

Living is an activity which is inside or outside, in the space of the room, the house, the street, the neighbourhood, the city and it's surroundings.

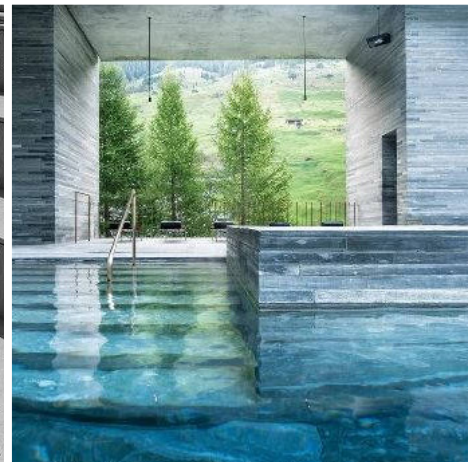
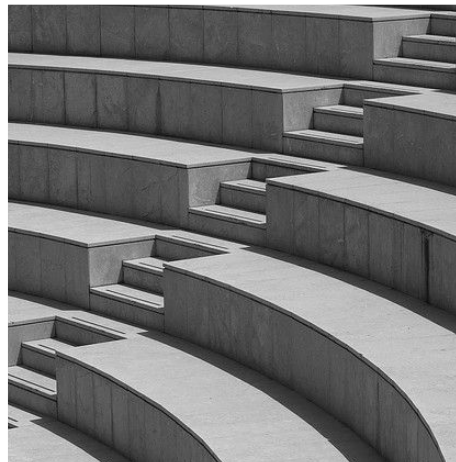
PARK LIVE is a translation of the living space into the park, which supports living in daily life for everybody.

How the private living room becomes a public domain area with the tools for living as an element and as furniture, for collective use and private moments.

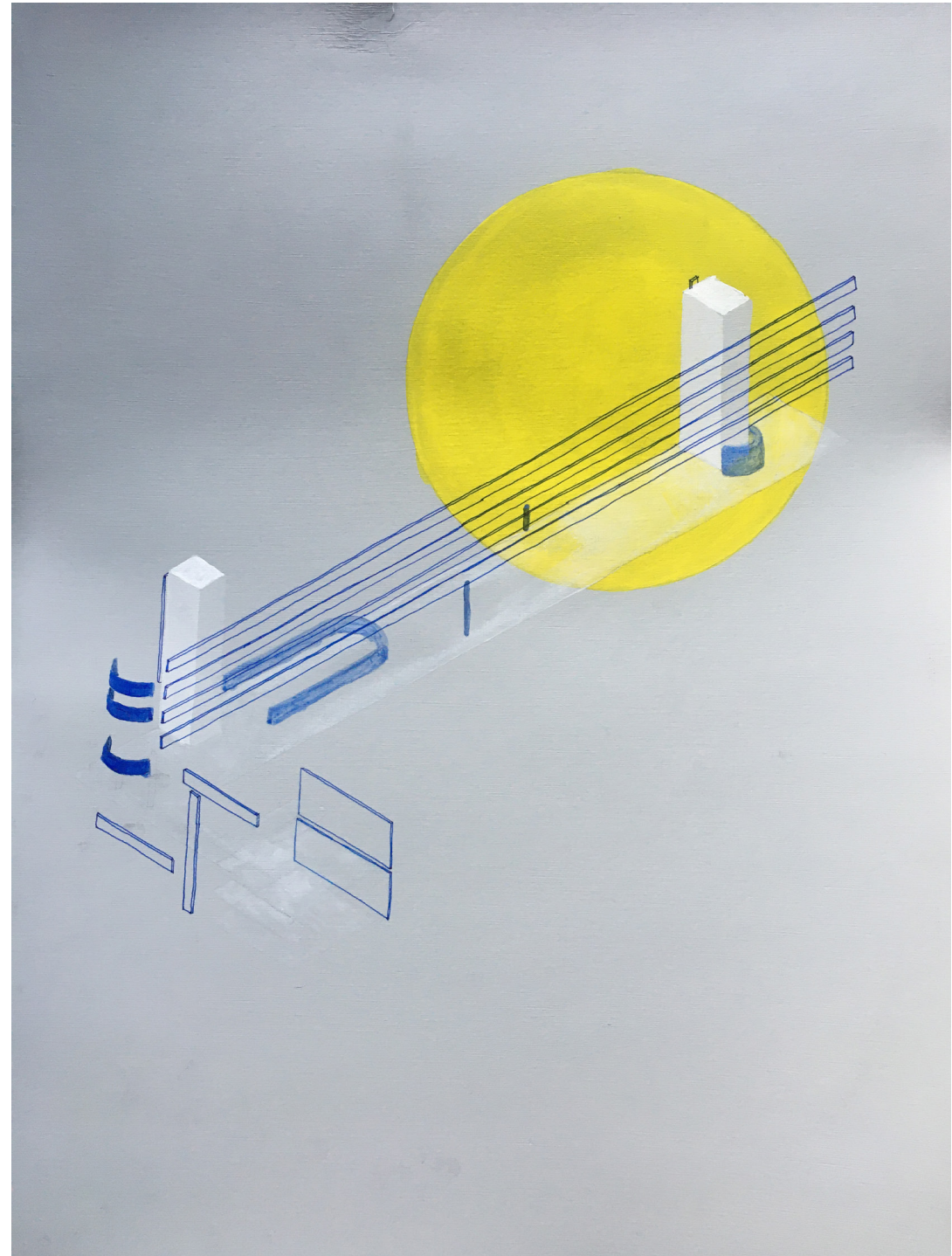
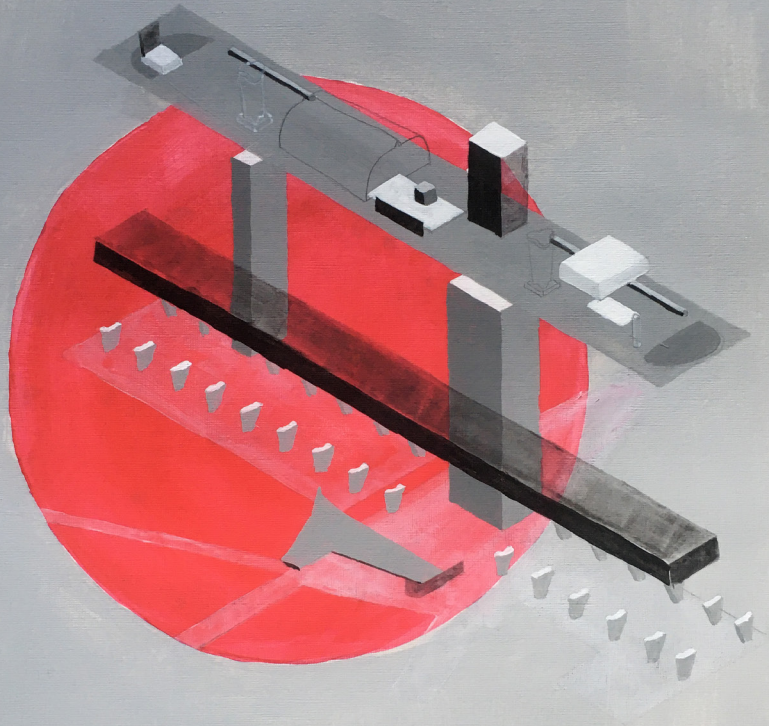
Elements as water (hygine | wash room), fireplace, sitting and use of a table (Hestia | livingroom) and liying down (tuning out | bedroom) make PARK LIVE complete.

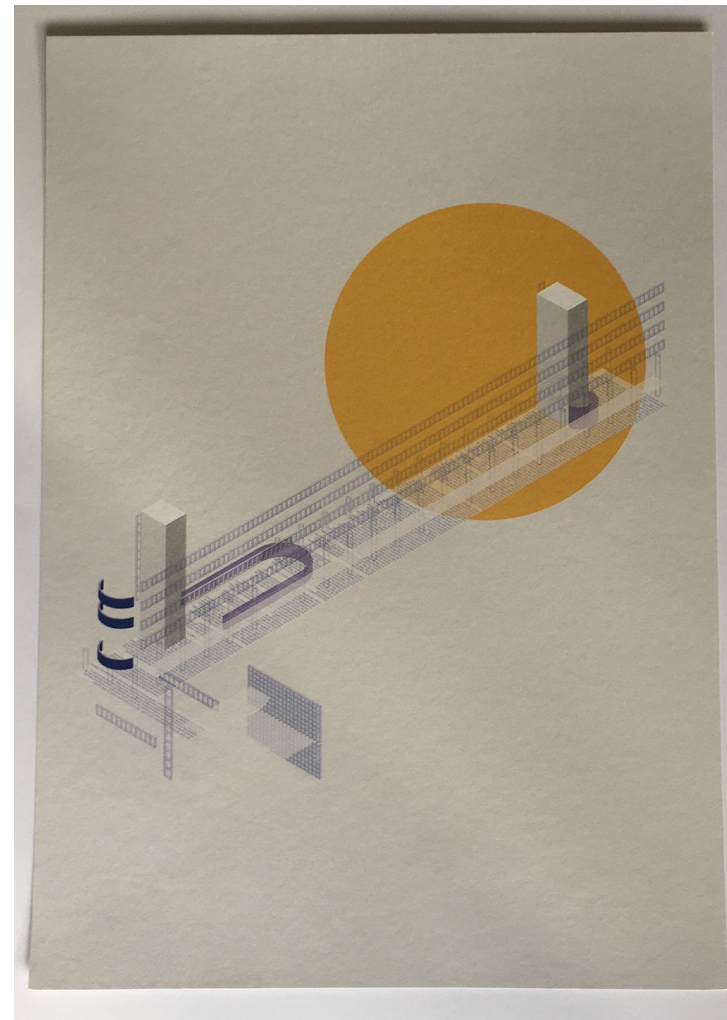
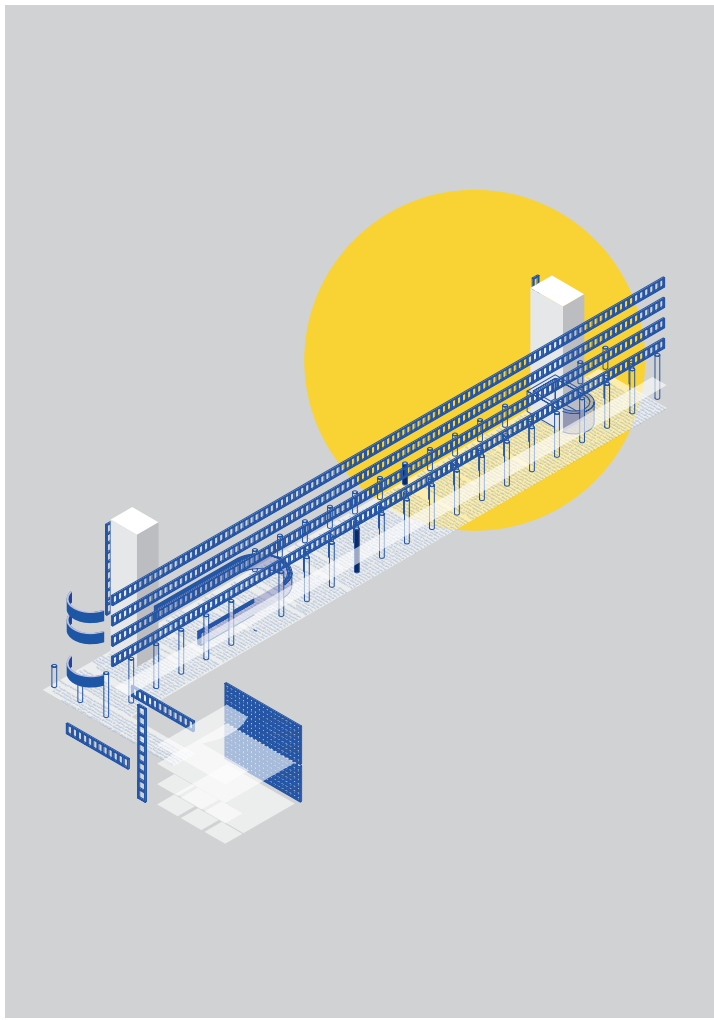
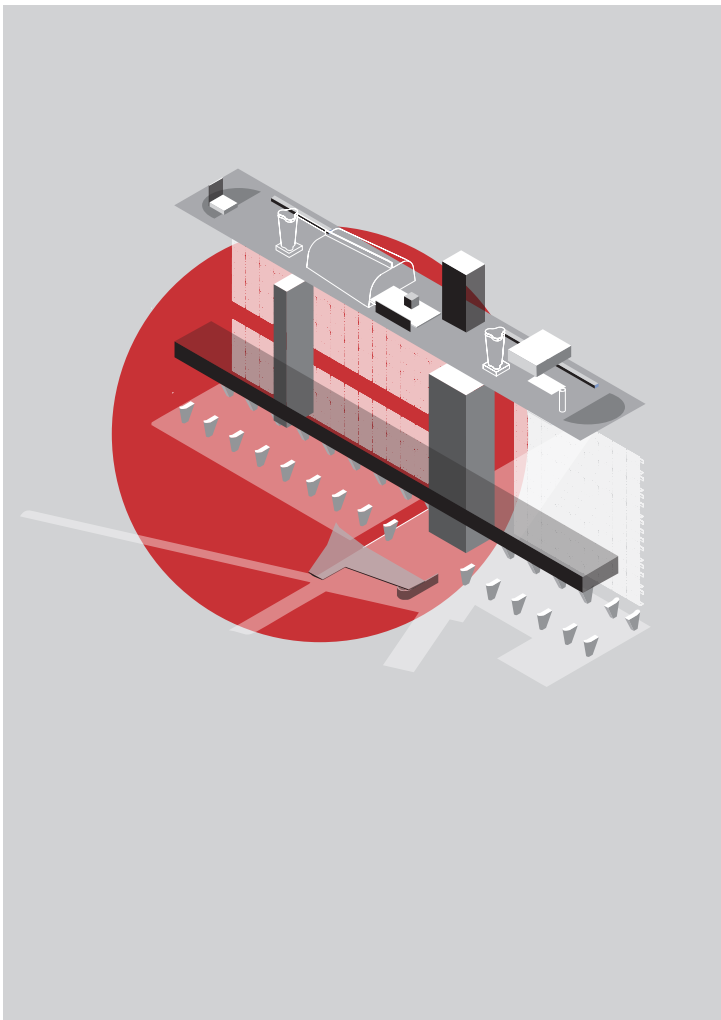
**QUESTIONS?**

# REFERENCES



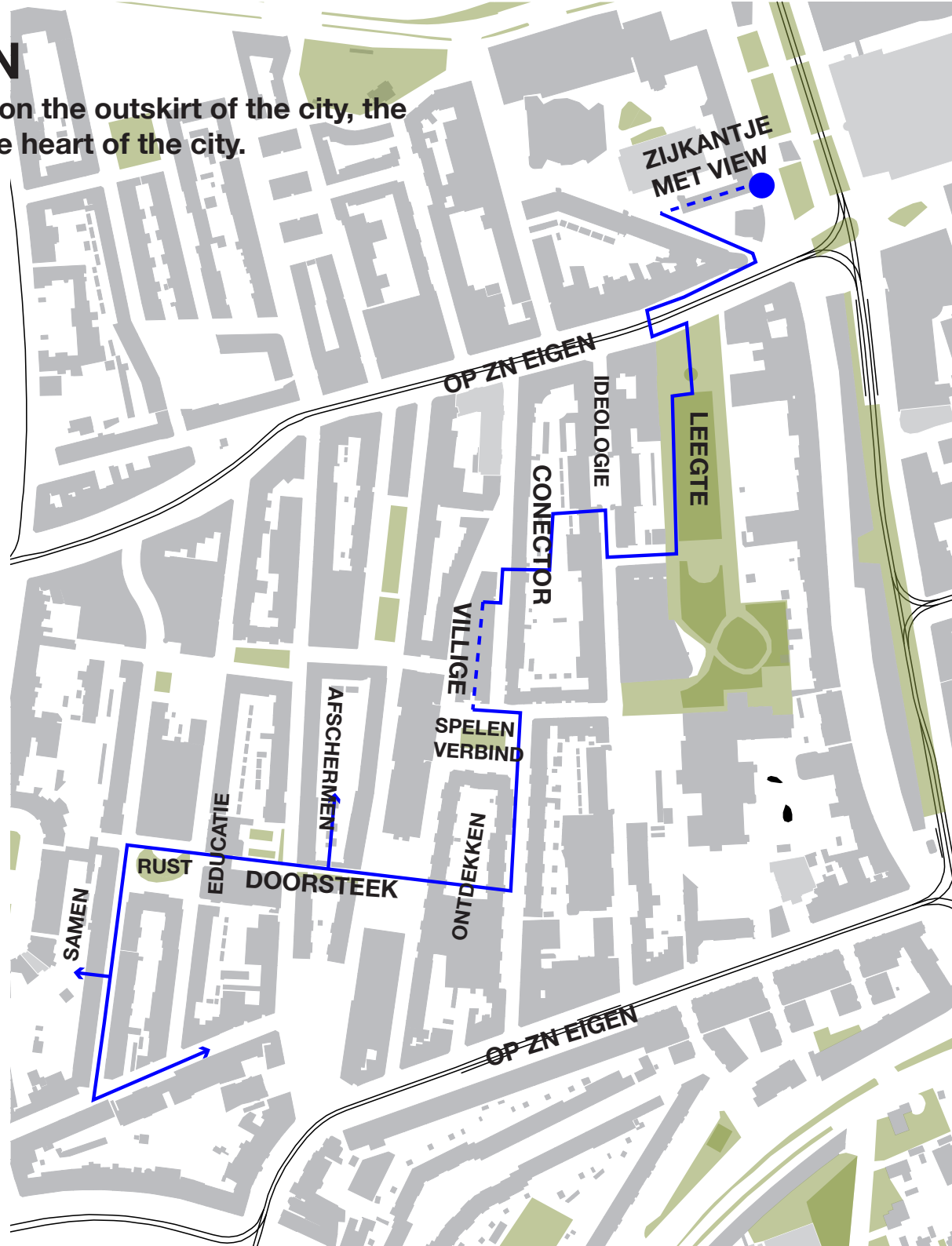
RE-DRAW



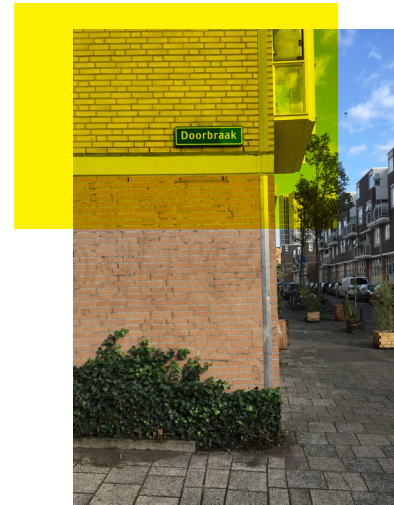


# OUDE WESTEN

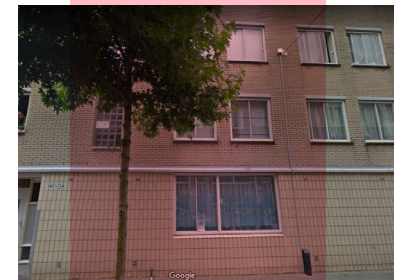
From an expansion area on the outskirts of the city, the Oude Westen became the heart of the city.



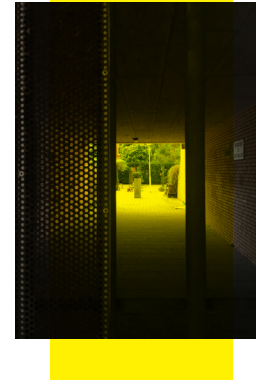
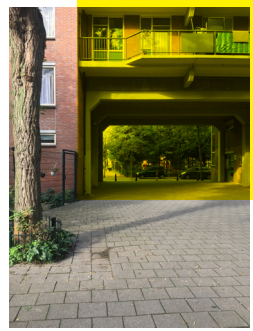
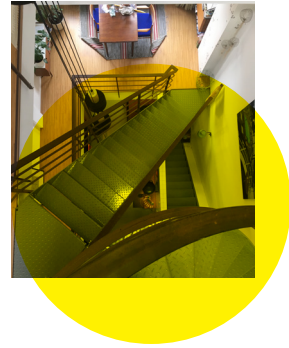
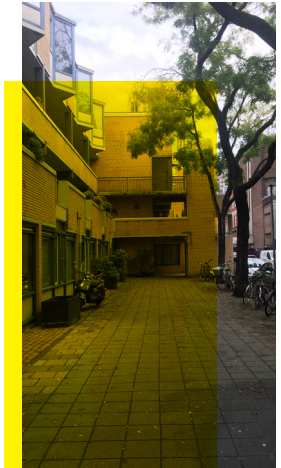




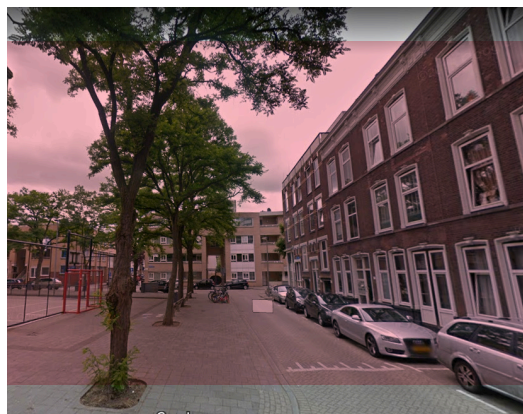
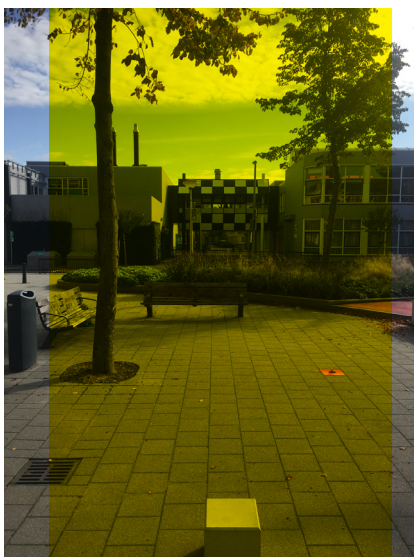
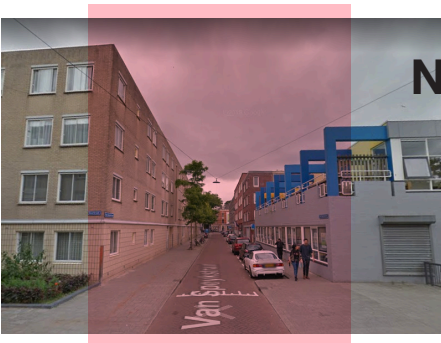
# NOTABLE ELEMENTS



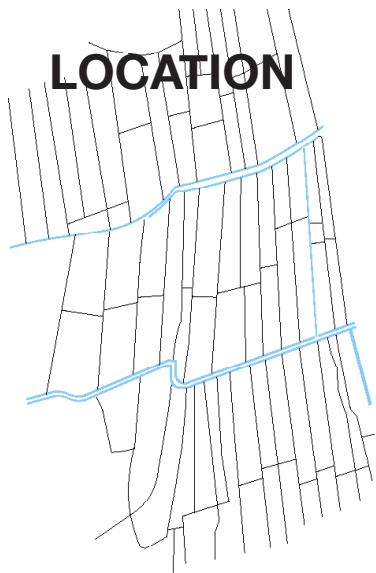
# NOTABLE CONECTOR



# NOTABLE ENSEMBLE



# LOCATION



1839 | Oude westen polder structuur



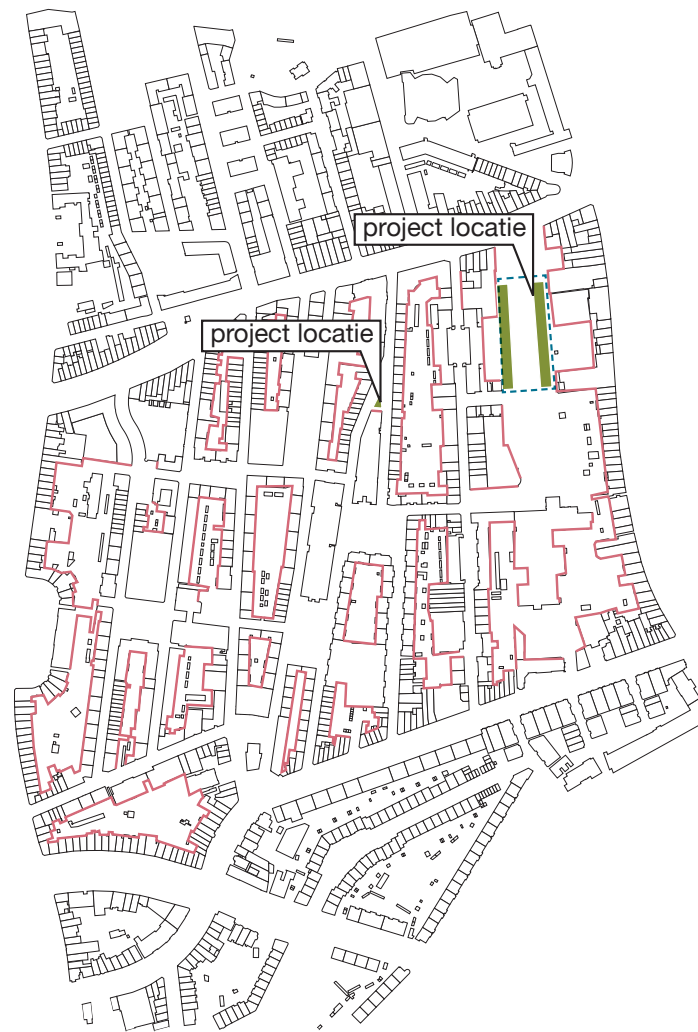
1903 | stedenbouw past zich aan, aan het landschap.



1970 | Over de bestaande structuur werd een nieuw systeem van dwarsverbindingen en pleinen gelegd om de wijk de nodige lucht en ruimte te geven, als ook de doorwaadbaarheid van de wijk te verbeteren. Er ontstaan "ensebles" oftewel decors 4.0



2020 | buurt wordt gekenmerkt door het woonblok. achterkantejes worden hierdoor onzichtbaar, net zoals de wereld de binnenhoven.

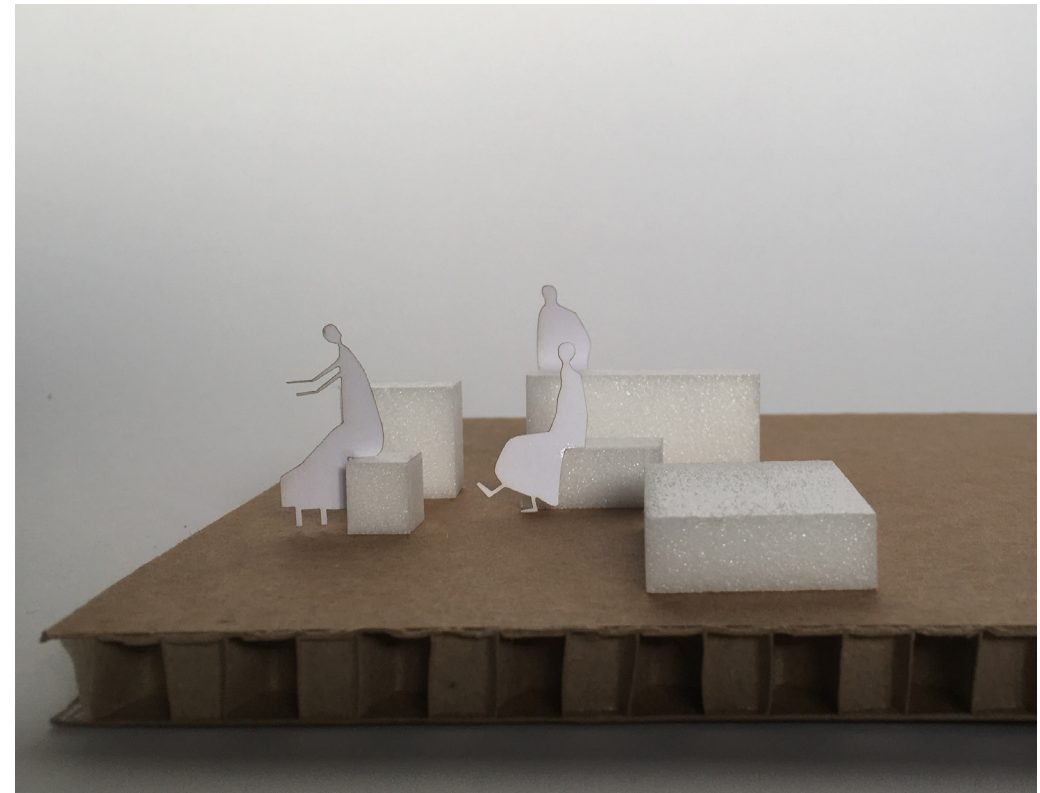


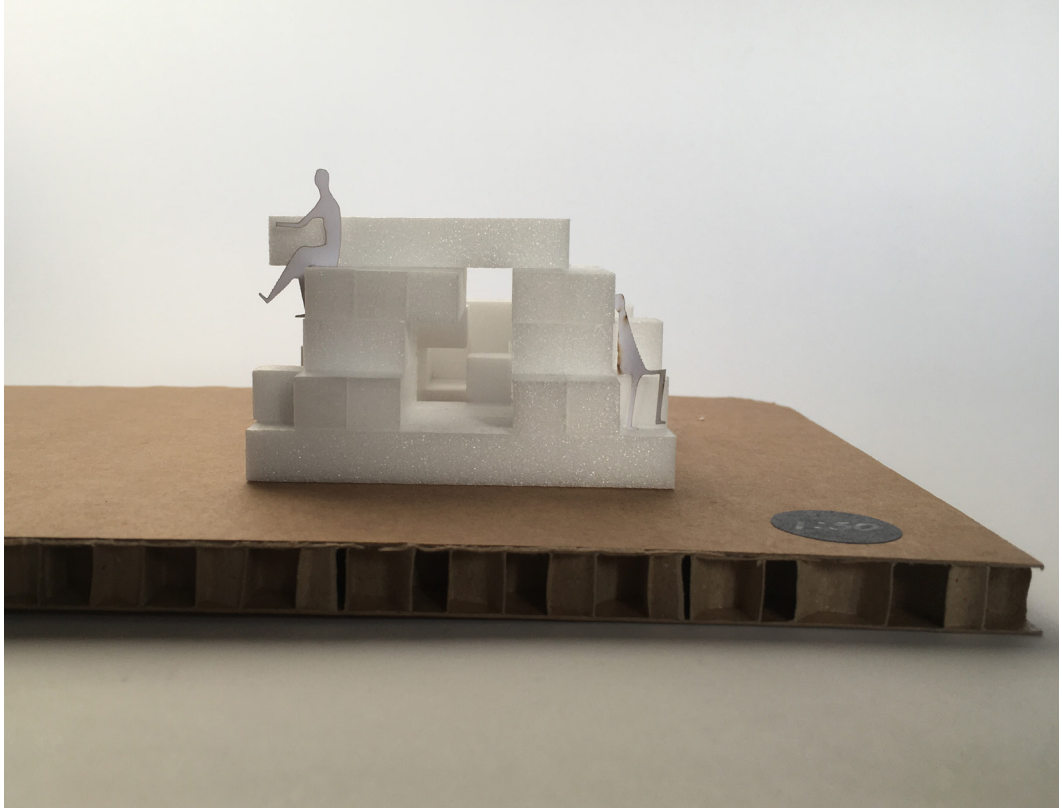
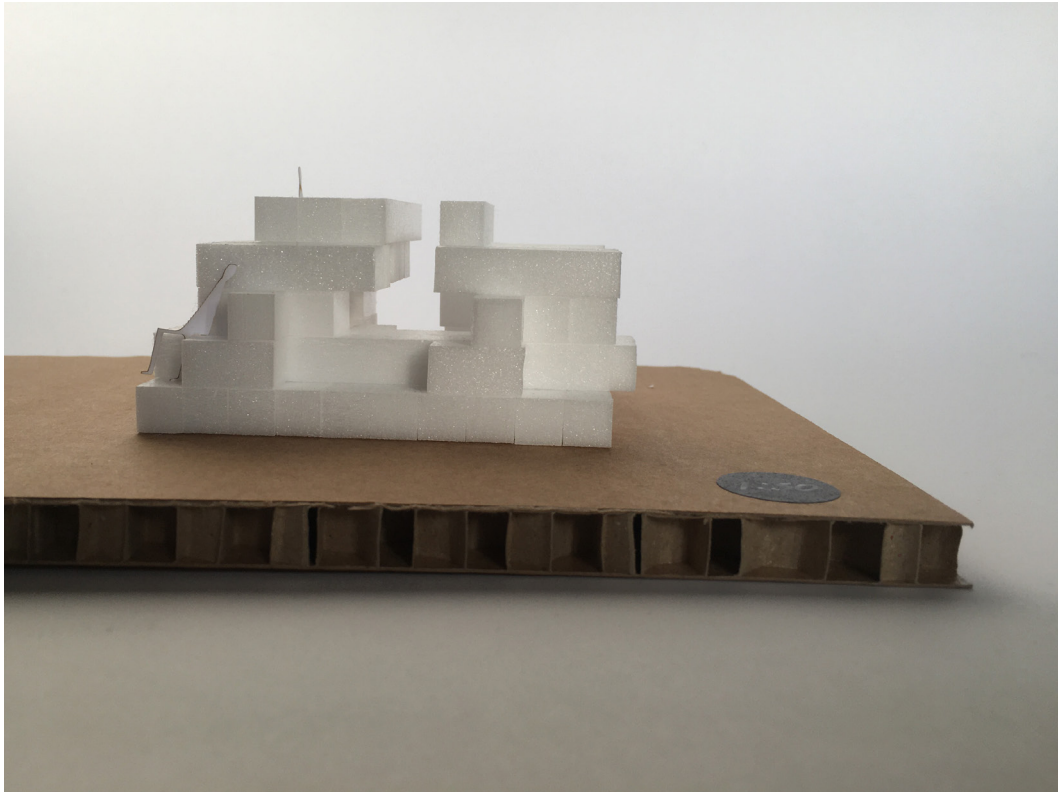
Tijdens de beeldanalyse, viel me op dat rondom de pleinen er esembles zijn ontstaan alsof er een decor is gemaakt. De diversiteit van de architectuur met het plein die is ingericht als een podium. Het wijkpark daartegenover wordt gekenmerkt door achterkantjes. Door slanke volumes aan de zijkanten van het perk te plaatsen, is het nog altijd toegankelijk maar zullen de volumes het decor vormen van het wijkpark. Daarnaast is er een stukje wijk wat in mijn optiek niet is afgemaakt en uitstekend geschikt is voor een hoekvoorziening

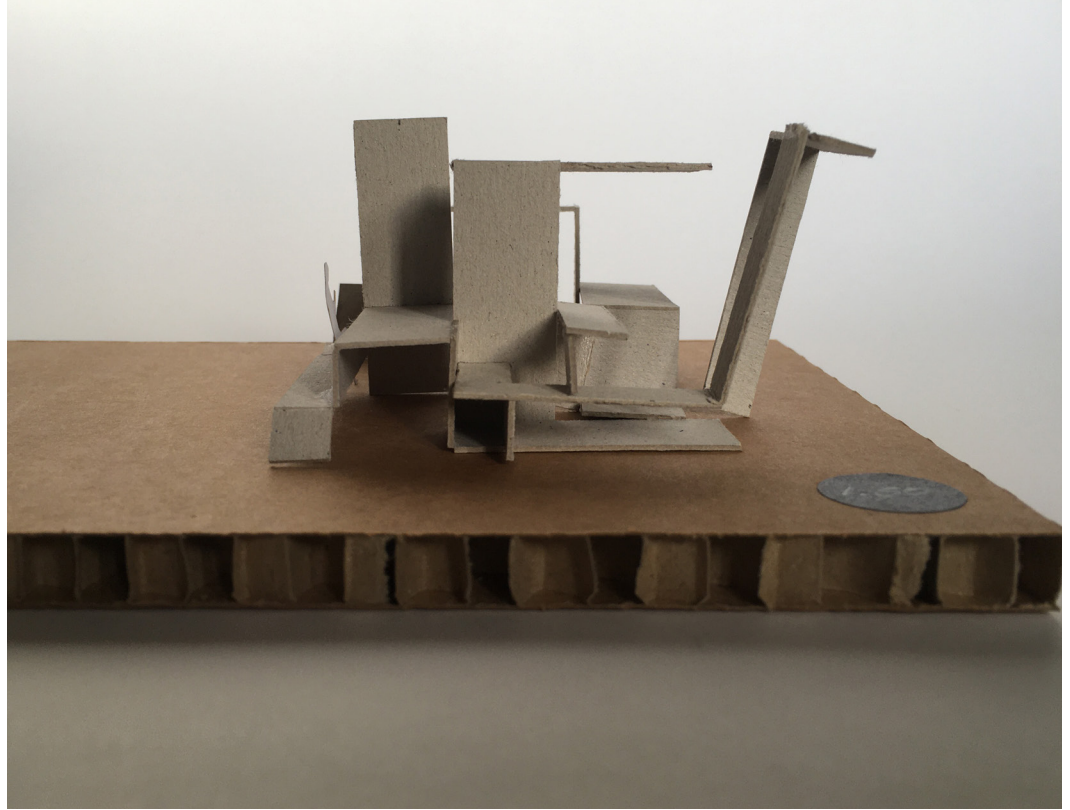
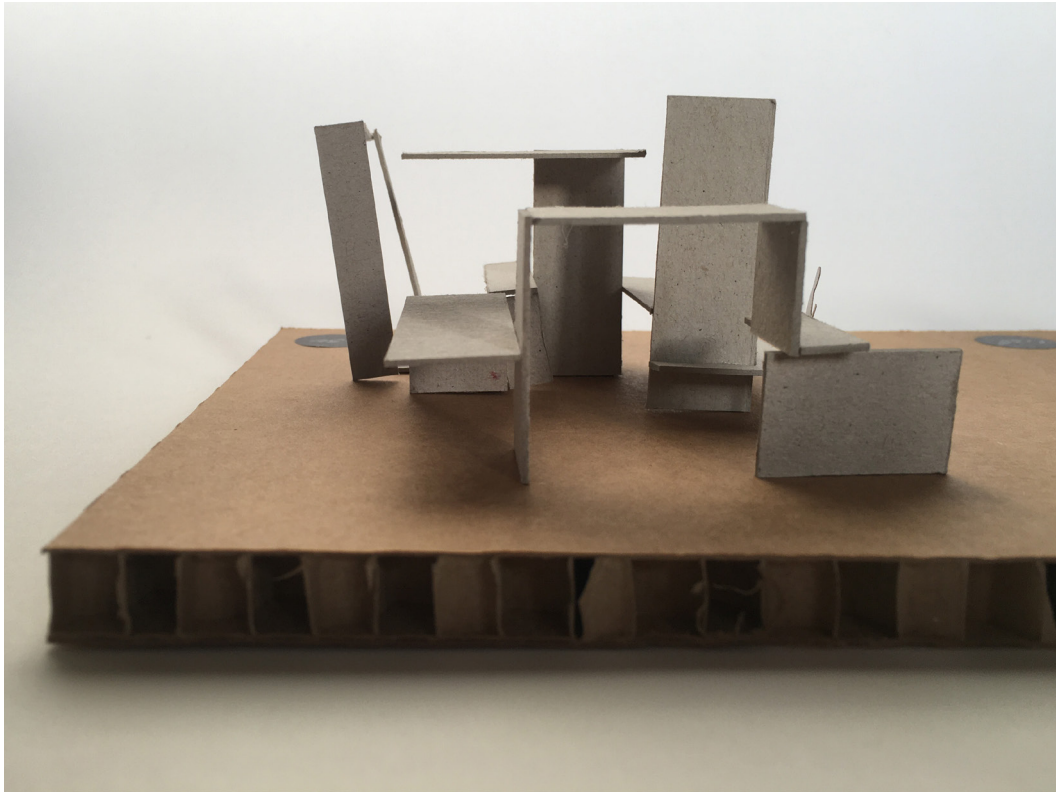


Reference | studio Senzu

# STUDIE









# SUGESTION FOR STORAGE

