

RIVER'S RESISTANCE

Diederik Vane
 Crossing Borders
 Rotterdamse Academie van Bouwkunst
 2020

The Merkske, a rich and biodiverse brook valley in the south of Brabant. The existence of this natural area is threatened. First, the brook has been canalized, causing drought in the adjacent landscape. The peat that is underground also dries out and breaks.

On the higher sand grounds, the agriculture is growing. This results in compressed soil. Groundwater can't infiltrate anymore and flows to the brook. This looks like a good aspect but is actually worse. The mega stables are polluting the groundwater. Besides that, plants are not able to root vertically and start to starve.

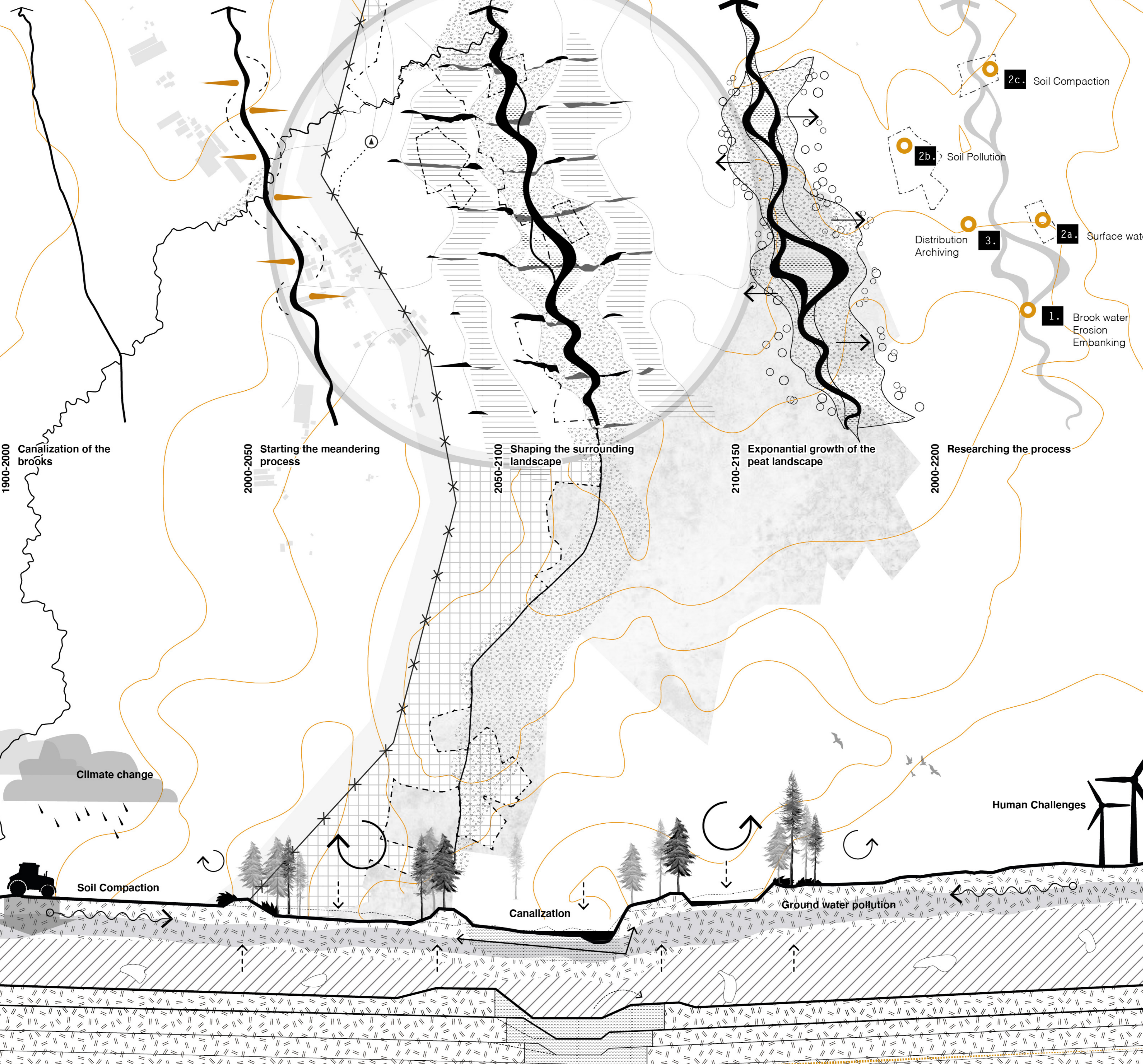
Thirdly, the planning of current human challenges, caused by climate change are aiming at border regions, which are for a high percentage protected nature reserves.

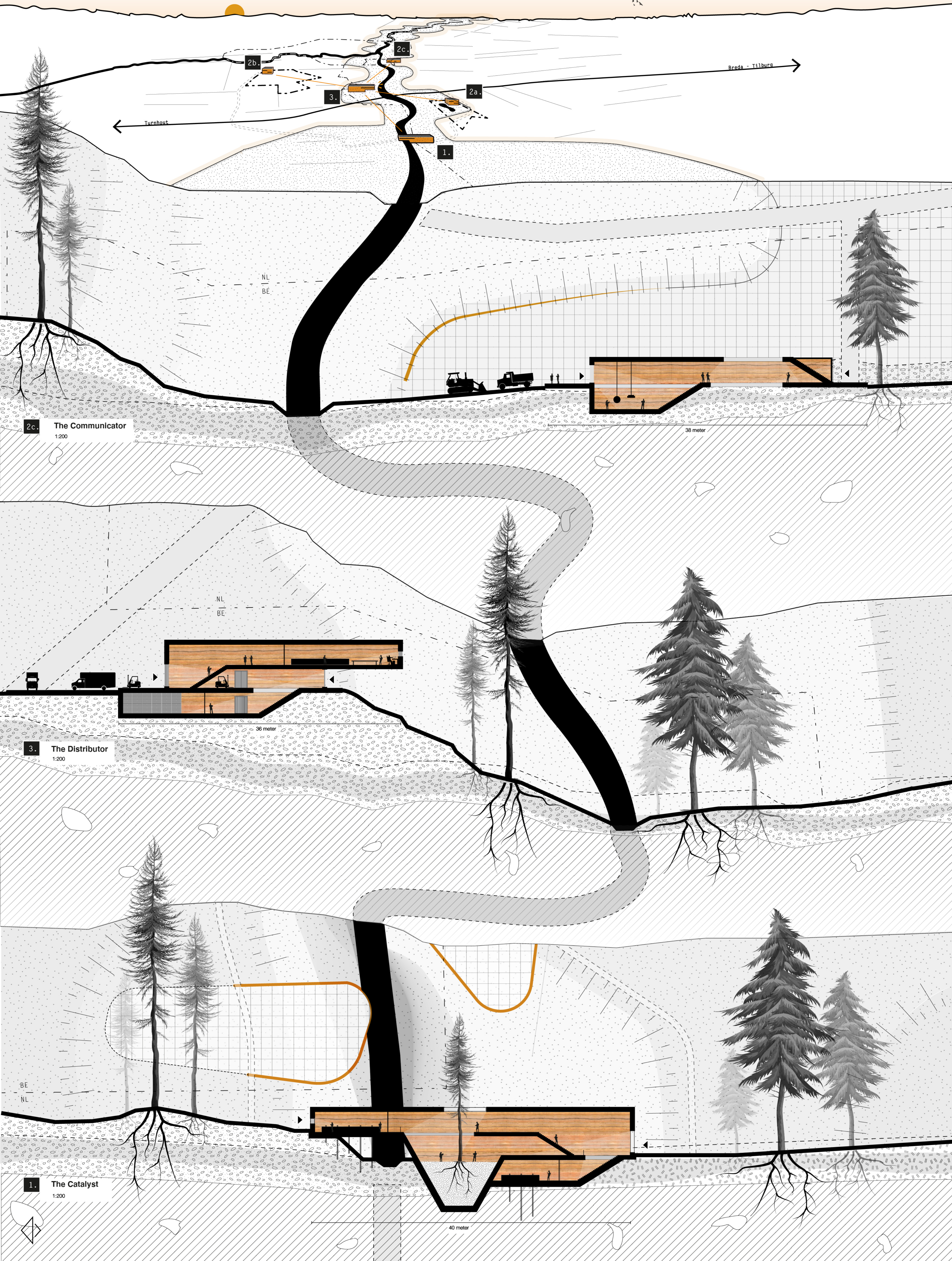
Nature is under attack by mankind and we don't even see it.

The solution is found in recreating the meandering of the brooks. We can achieve this by creating hard and soft ground layers and by shaping the landscape in a way that pushes the brook out of her rigid form.

Besides that, we incorporate a soil institute that researches and observes the quality of the water, pollution and soil over time.

The border of this region's eventually becomes an area instead of a line. If we succeed the Merkske, and other nature reserves, might be able to resist the challenges of the crucial upcoming years.





Turnhout ← Breda - Tilburg →

2c. The Communicator
1:200

38 meter

3. The Distributor
1:200

36 meter

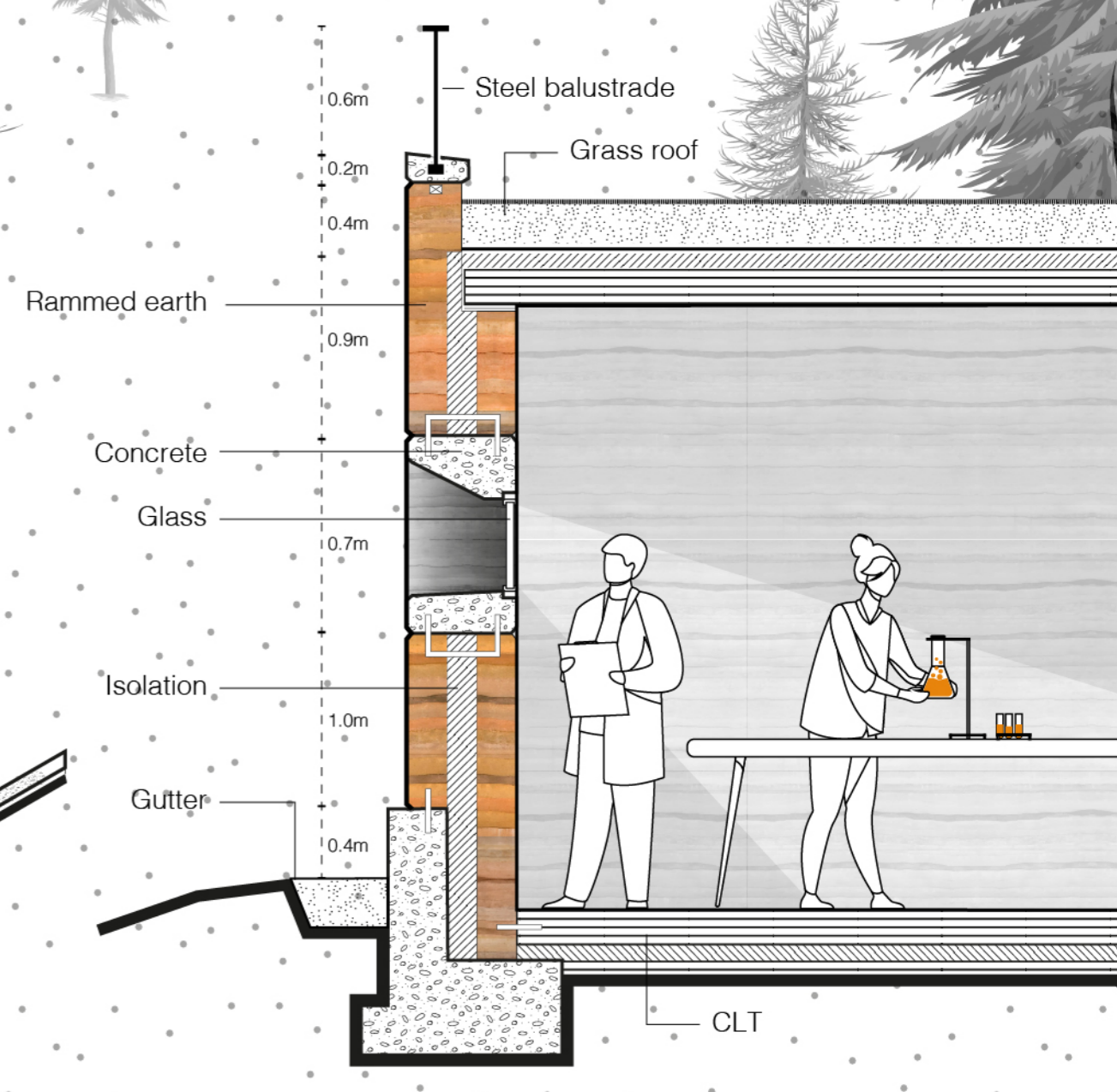
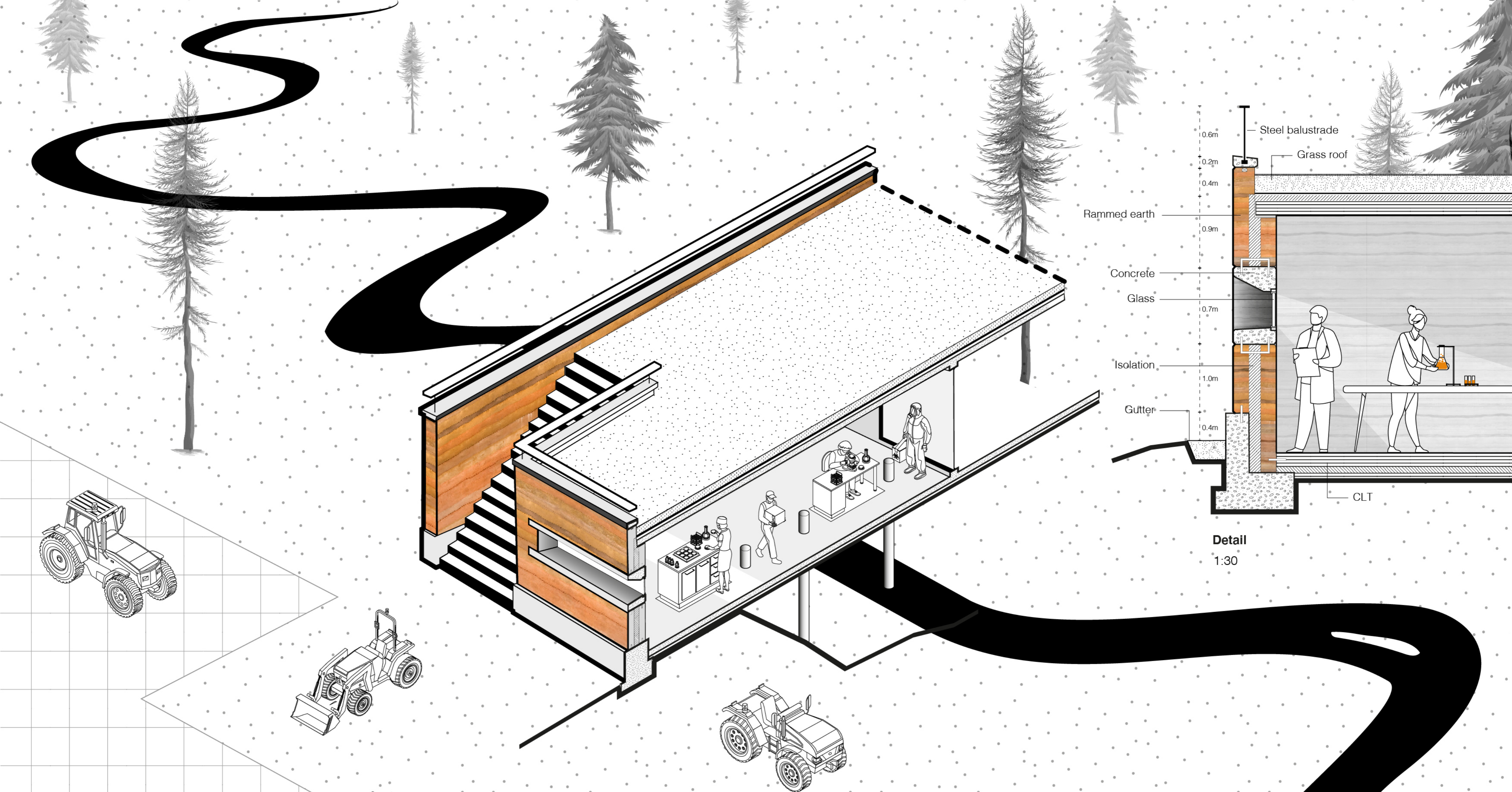
1. The Catalyst
1:200

40 meter

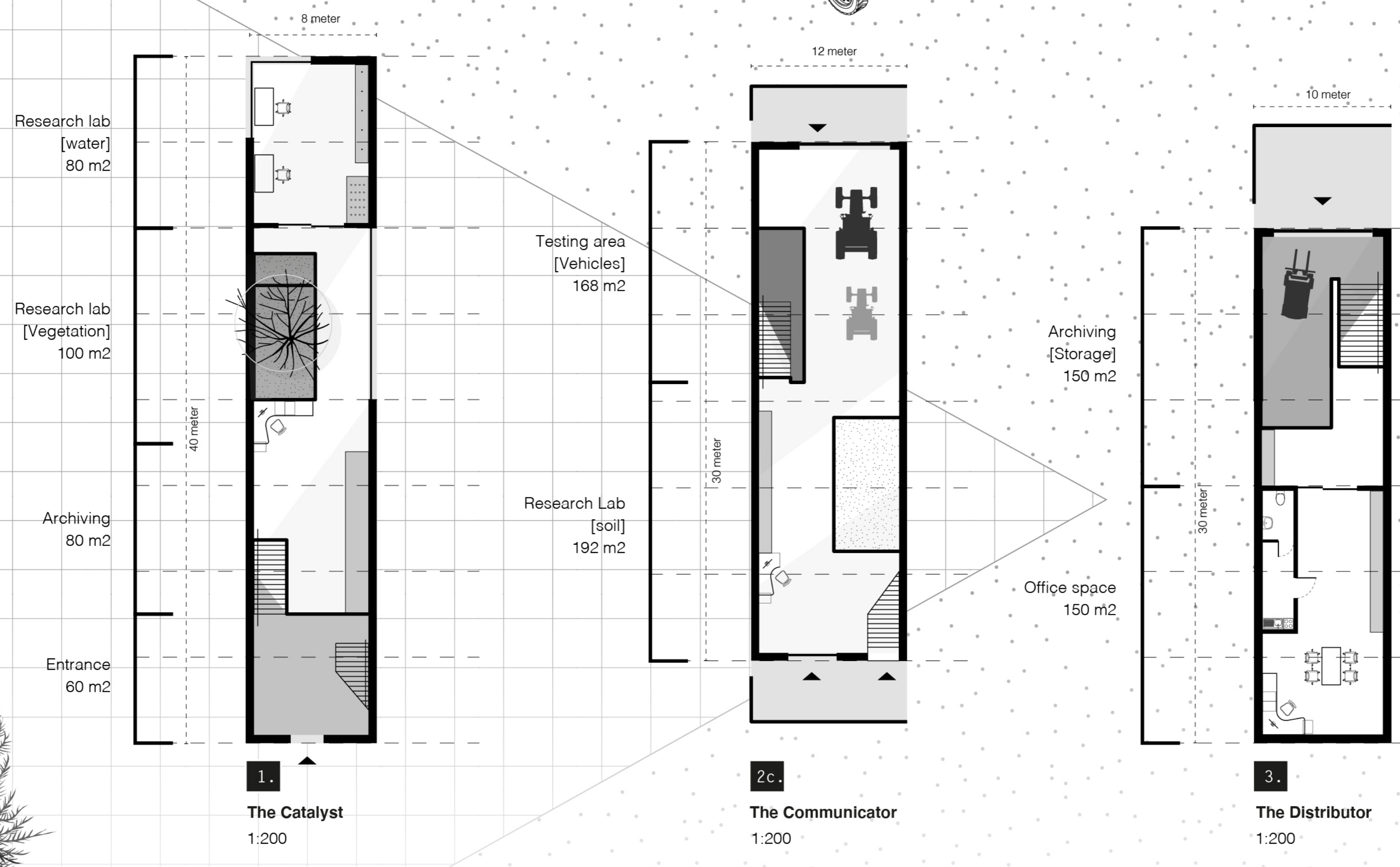
NL
BE

NL
BE

BE
NL



Detail
1:30



1.
The Catalyst
1:200

2c.
The Communicator
1:200

3.
The Distributor
1:200

