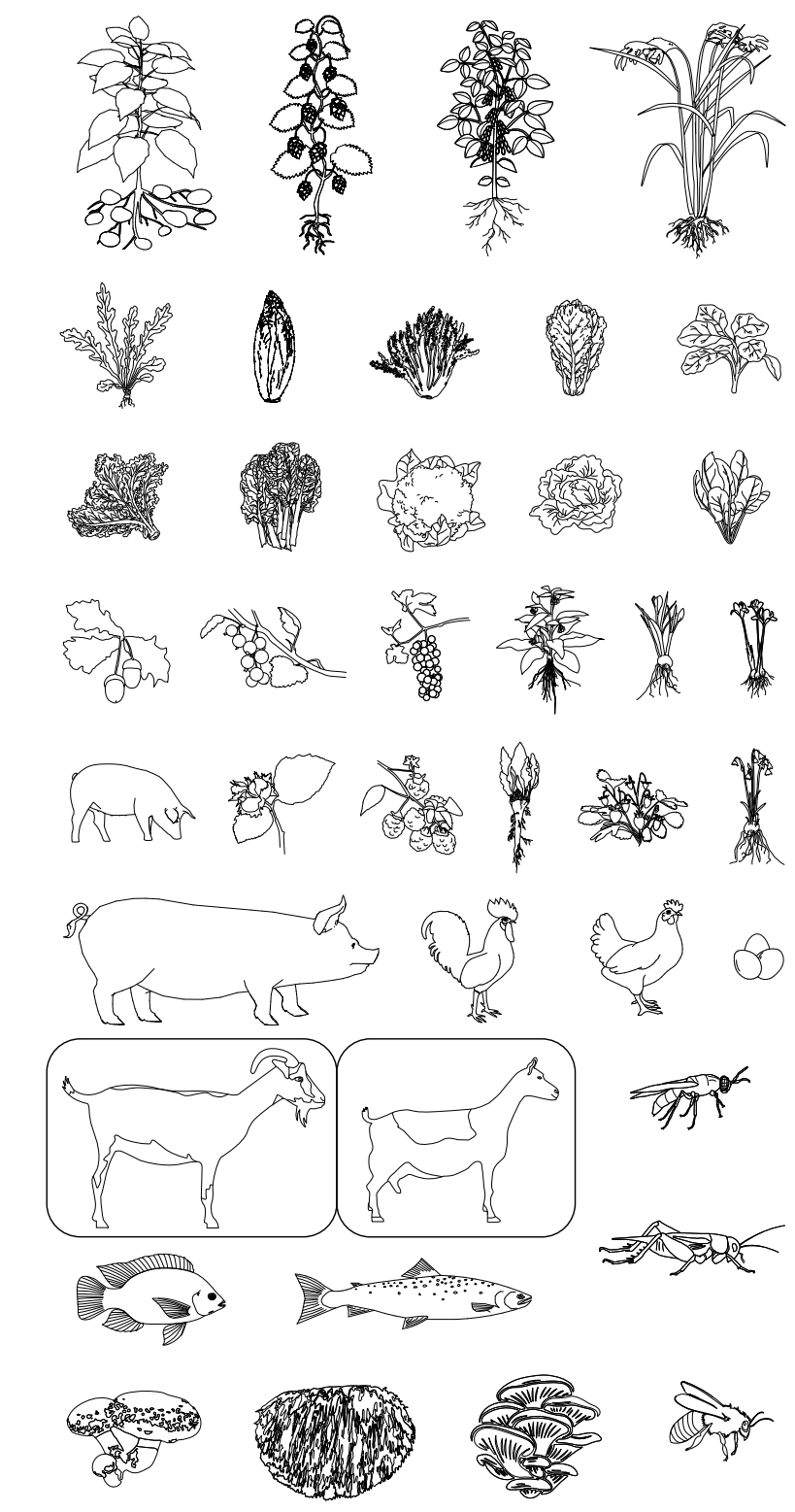


# 11. UNDER ONE ROOF

CHARLOTTE MEIJERINK



A GOAT FARM THAT PRODUCES: MILK, CHEESE, BUTTER, BUTTERMILK AND MEAT.

600 GOATS  
10 BUCKS  
APPROX. 150 LAMBS PER SEASON

DAIRY PRODUCTION:  
52000L BOTTLED MILK  
117000KG BUTTER  
187200 BOTTLED BUTTERMILK  
26000 KG CHEESE

MEAT PRODUCTION:  
3200KG WHOLE KARKAS  
32000KG LOOSE CUTS  
150X ORGANS  
+/- 40L BLOOD  
150 HIDES  
+/- 9 KG BONES

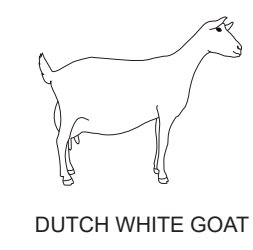
FROM MILKING TO BUTTER CHURNING, ON THIS FARM EVERYTHING HAPPENS UNDER ONE ROOF.

A ROOF THAT HAS A LOT GOING ON AS WELL. ALL GOATS AND BUCKS ARE ABLE TO GO OUTSIDE ALL DAY. PLACING THE GRASS FIELD ON THE ROOF ALSO SAVES SPACE, AND MAKES FOR AN INTERESTING SIGHT.

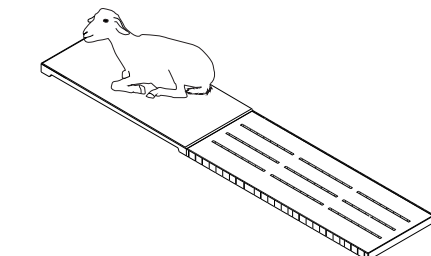
ON THE GROUND FLOOR THERE ARE SEPARATE AREAS FOR THE BUCKS, NULLIPAROUS GOATS, MILK PRODUCING GOATS AND LAMBS. FOOD STORAGE AND MILKING IS ALSO DONE HERE.

ON THE FIRST FLOOR THESE IS A BOARDWALK GOING ALL THE WAY AROUND, GIVING THE FARMERS AND VISITORS A CLEAR VIEW OF THE ENTIRE FARM. THE FIRST FLOOR IS ALSO THE PRODUCTION FLOOR FOR PASTEURISED MILK, BUTTER, MILK, BUTTER, CHEESE AND MEAT.

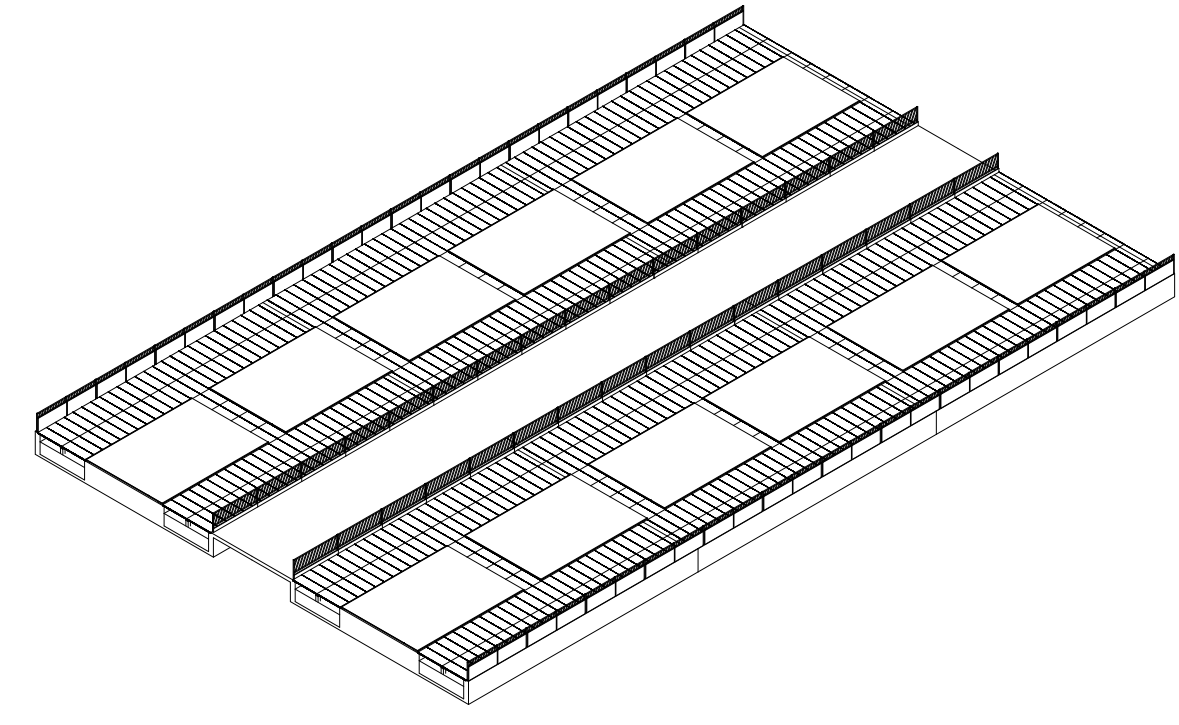
WASTE ON EVERY LEVEL WITHIN THE FARM IS BEING AVOIDED. MOST LOOPS ARE CLOSED IN THE FARM ITSELF. THE OTHERS ARE CLOSED WITHIN THE MUNICIPALITY. THIS WAY CITY AND FARM CREATE A TIGHT BOND BENEFITTING BOTH.



DUTCH WHITE GOAT

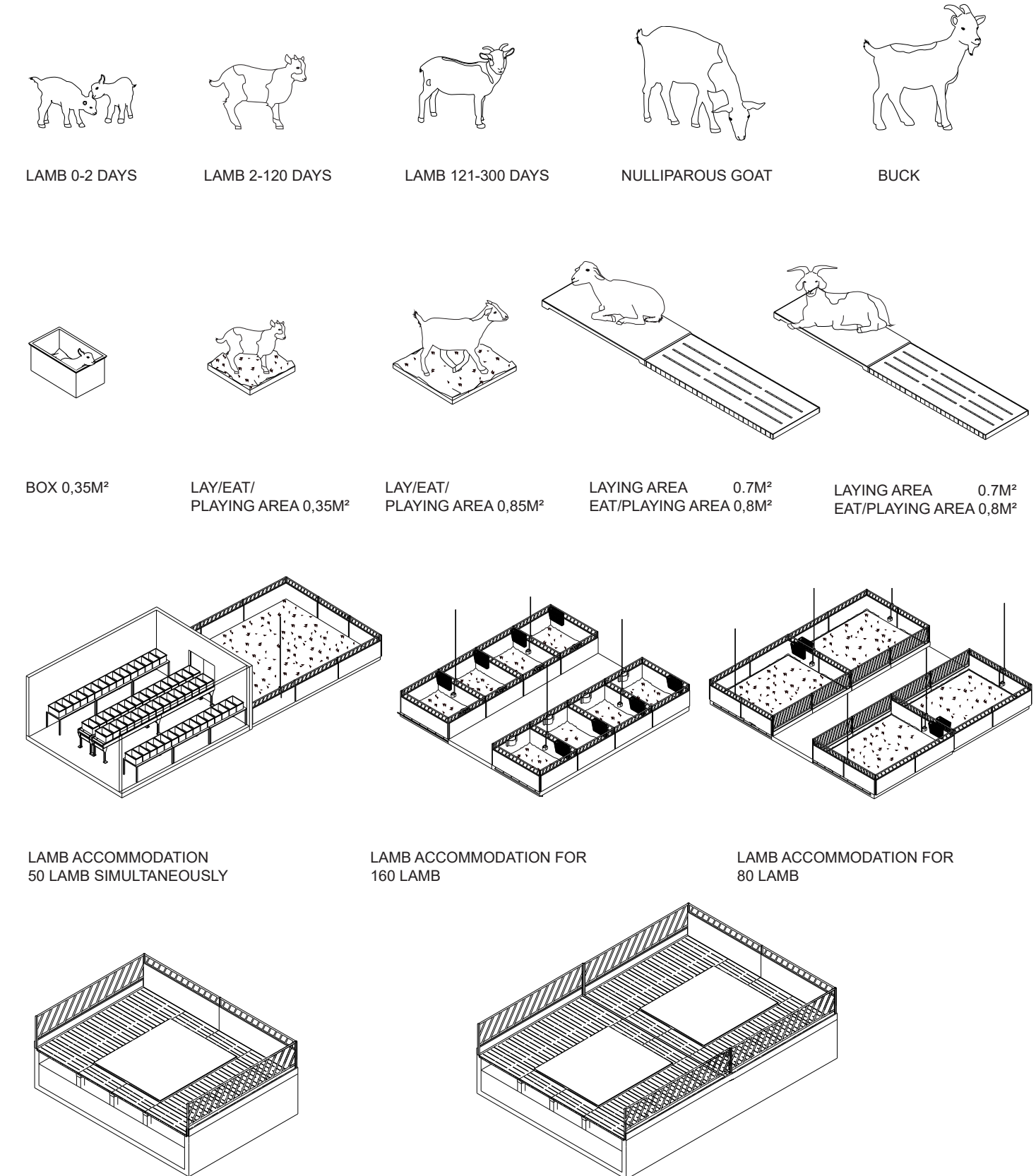


UNIT PER ANIMAL

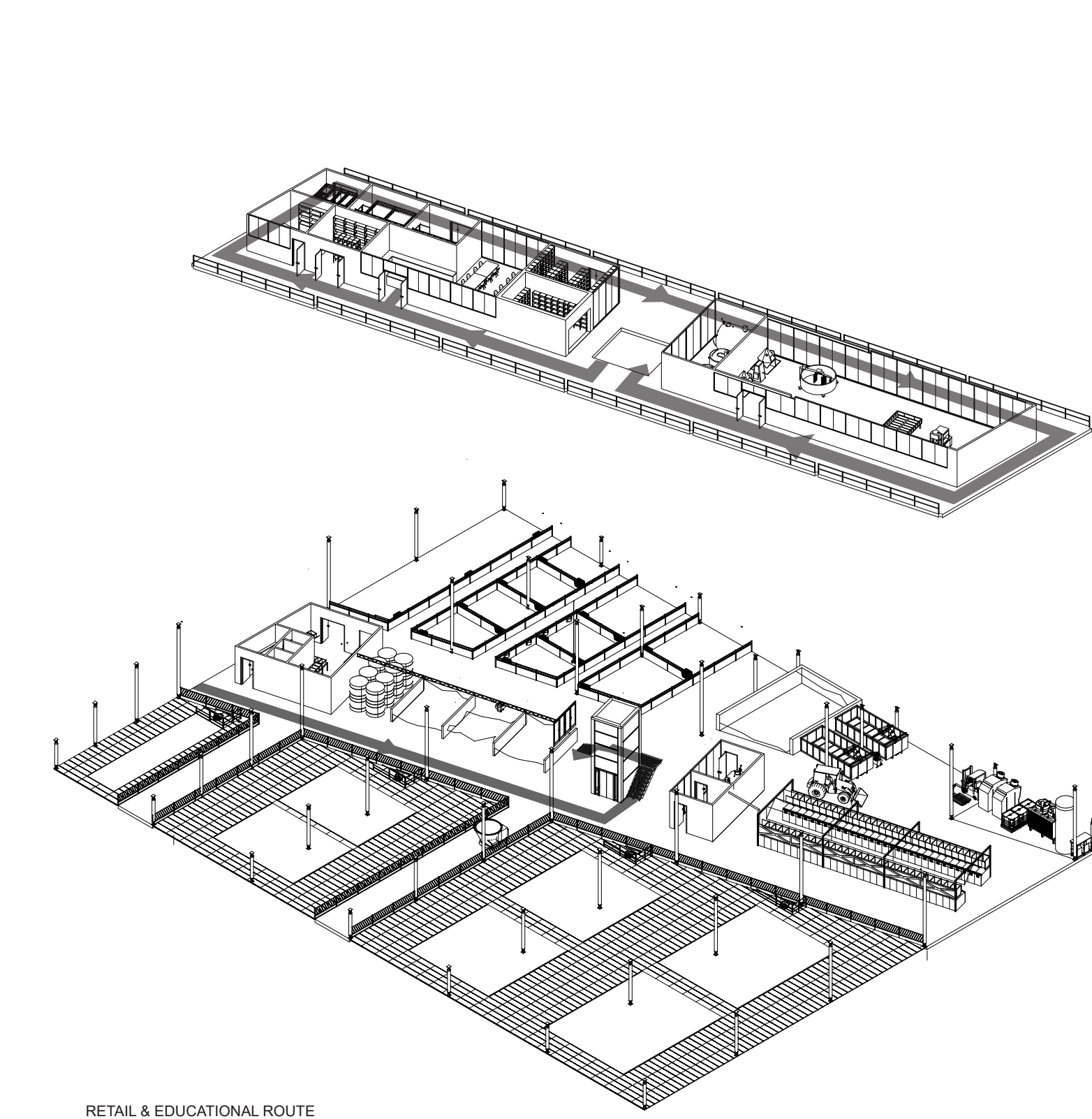


GOAT GARDEN FOR 600 GOATS

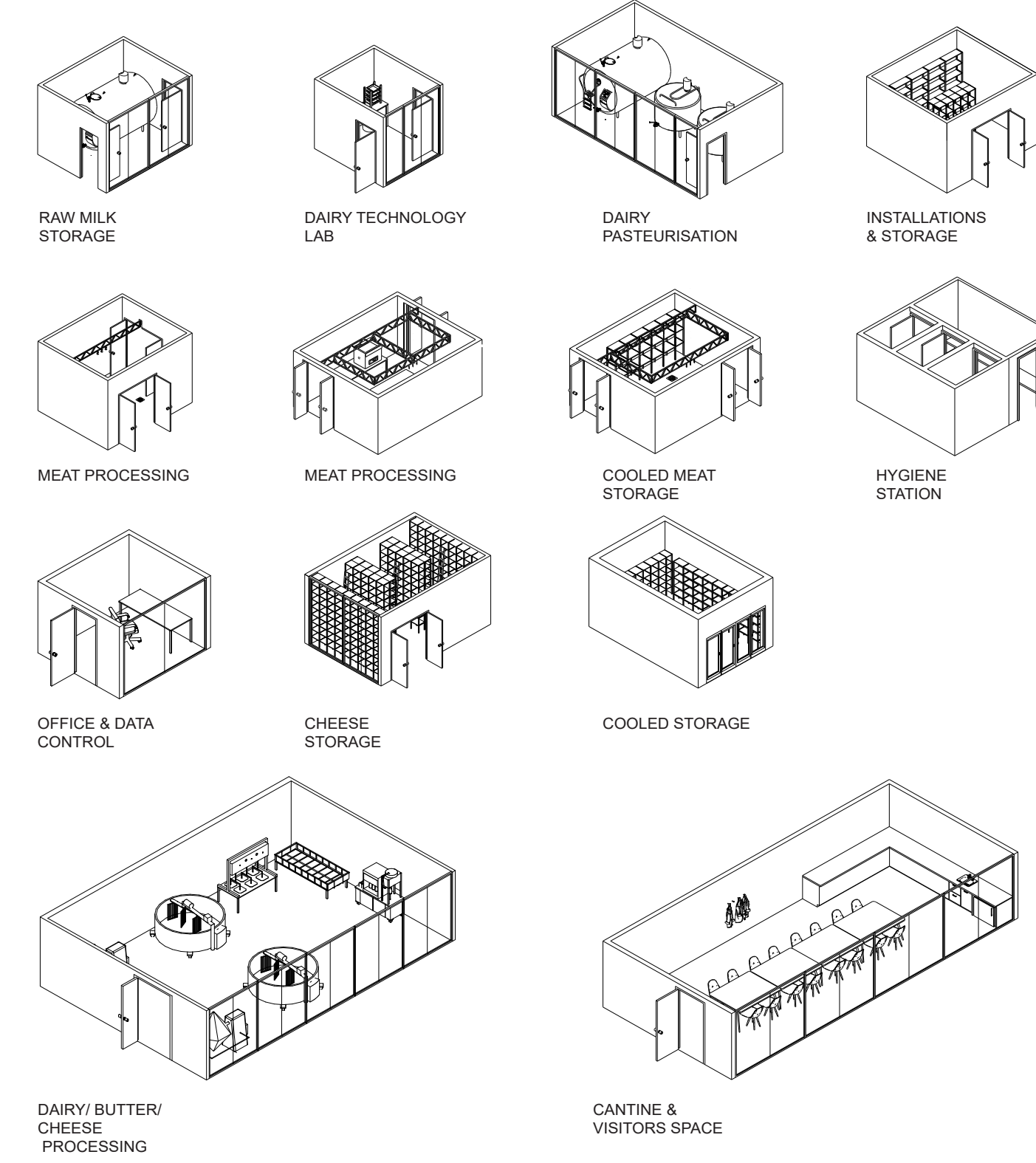
## PRODUCTION FLOOR



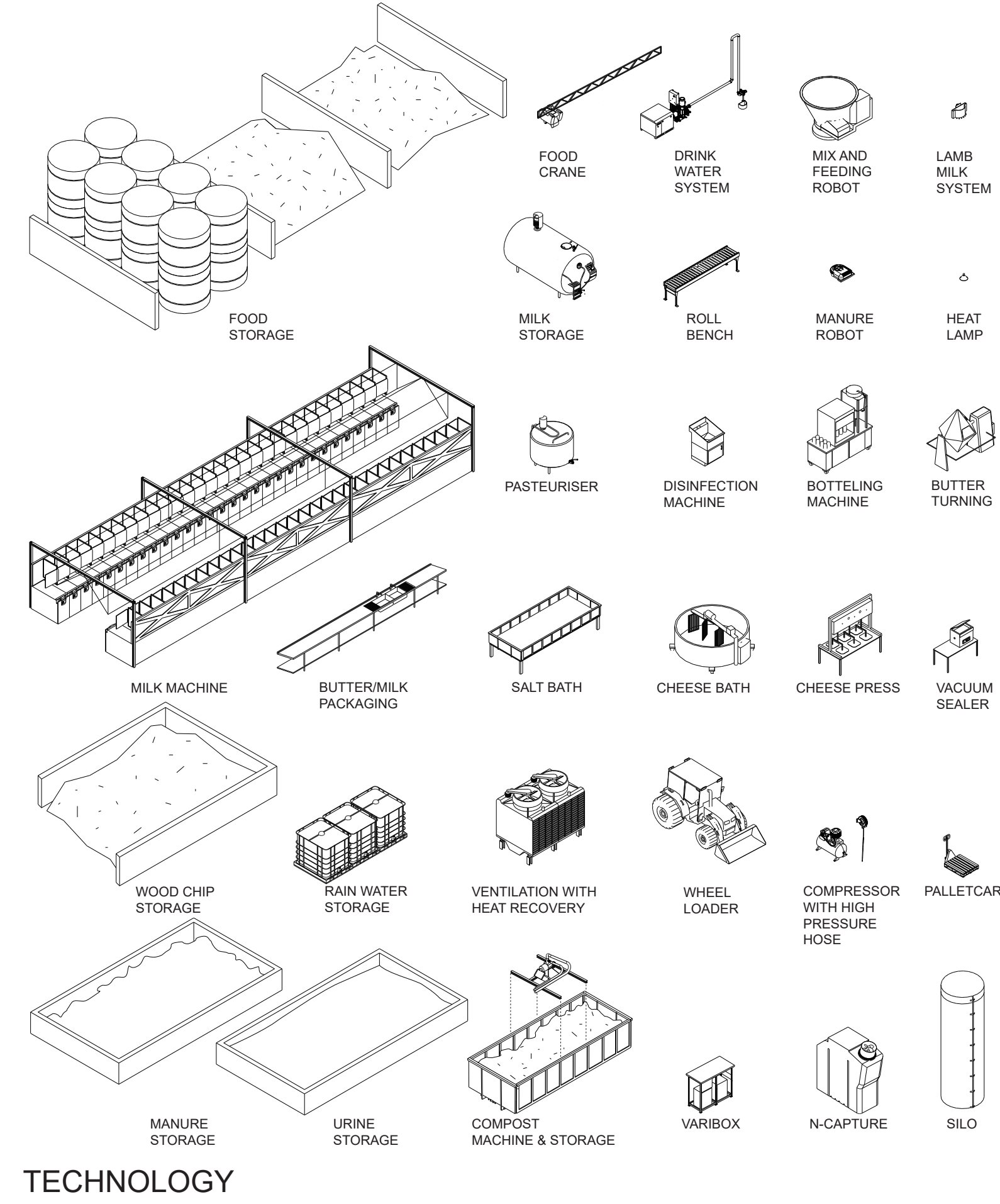
## PRODUCT SYNERGY



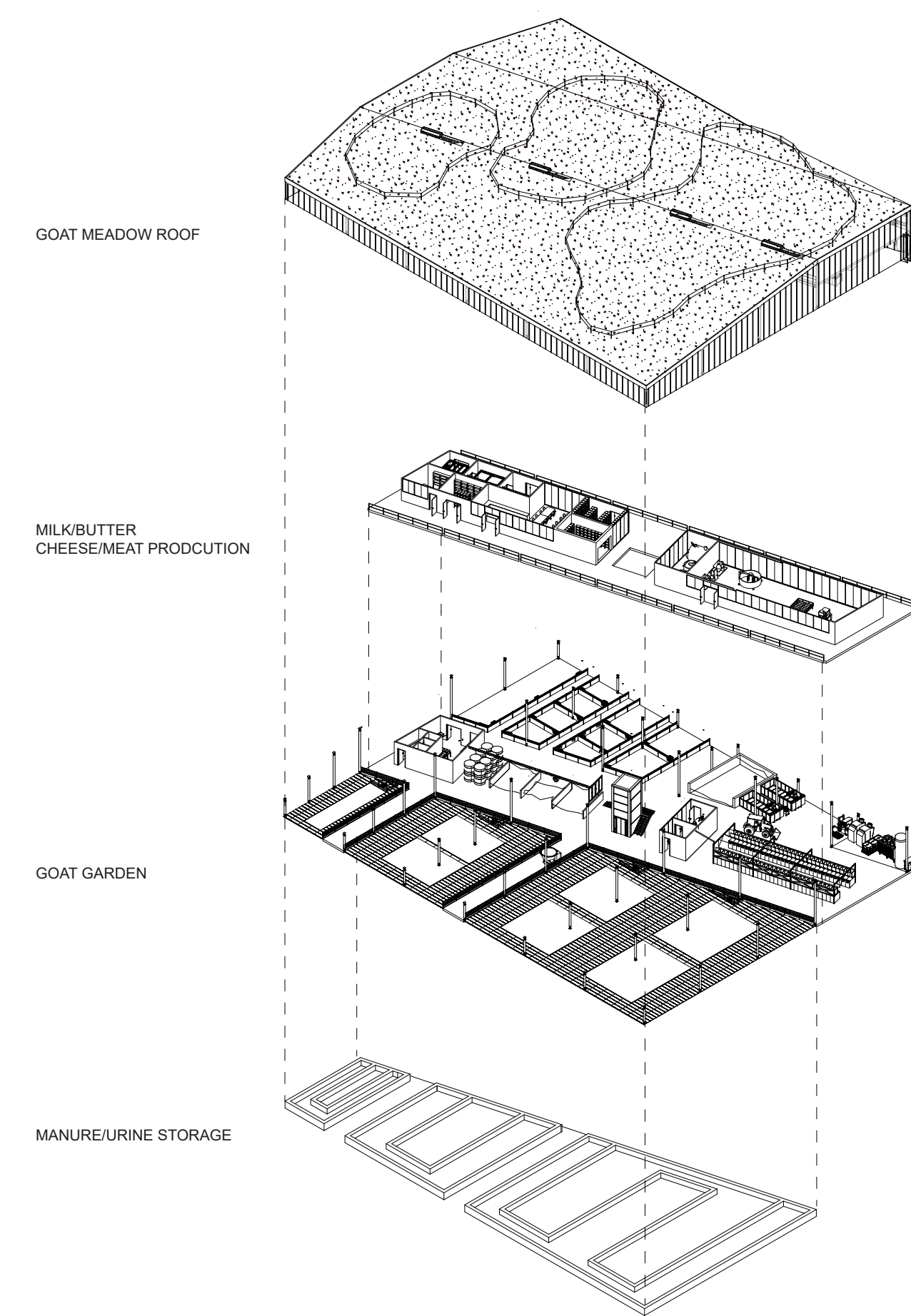
## AGRI-CULTURE



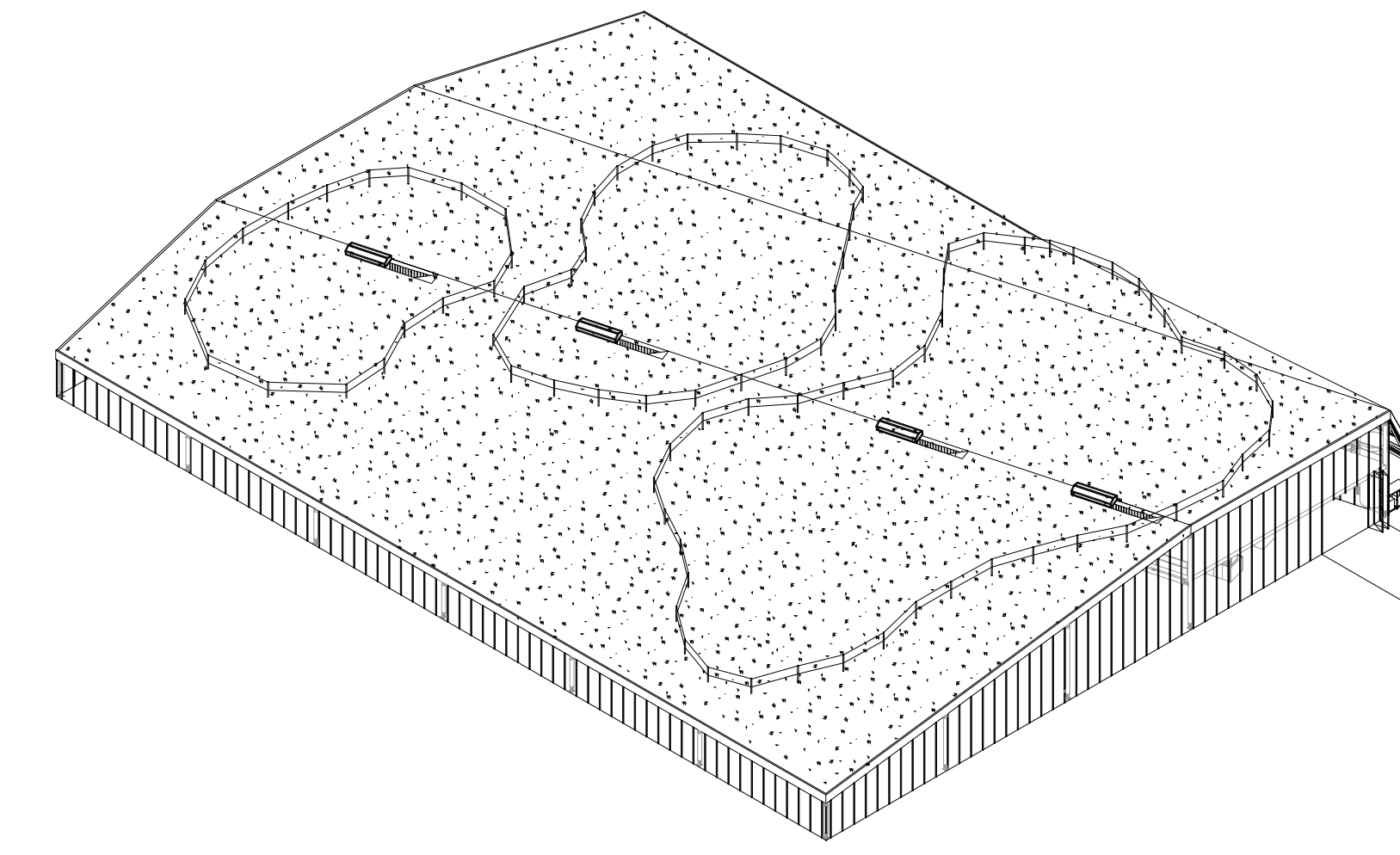
## PROCESSING & PACKAGING



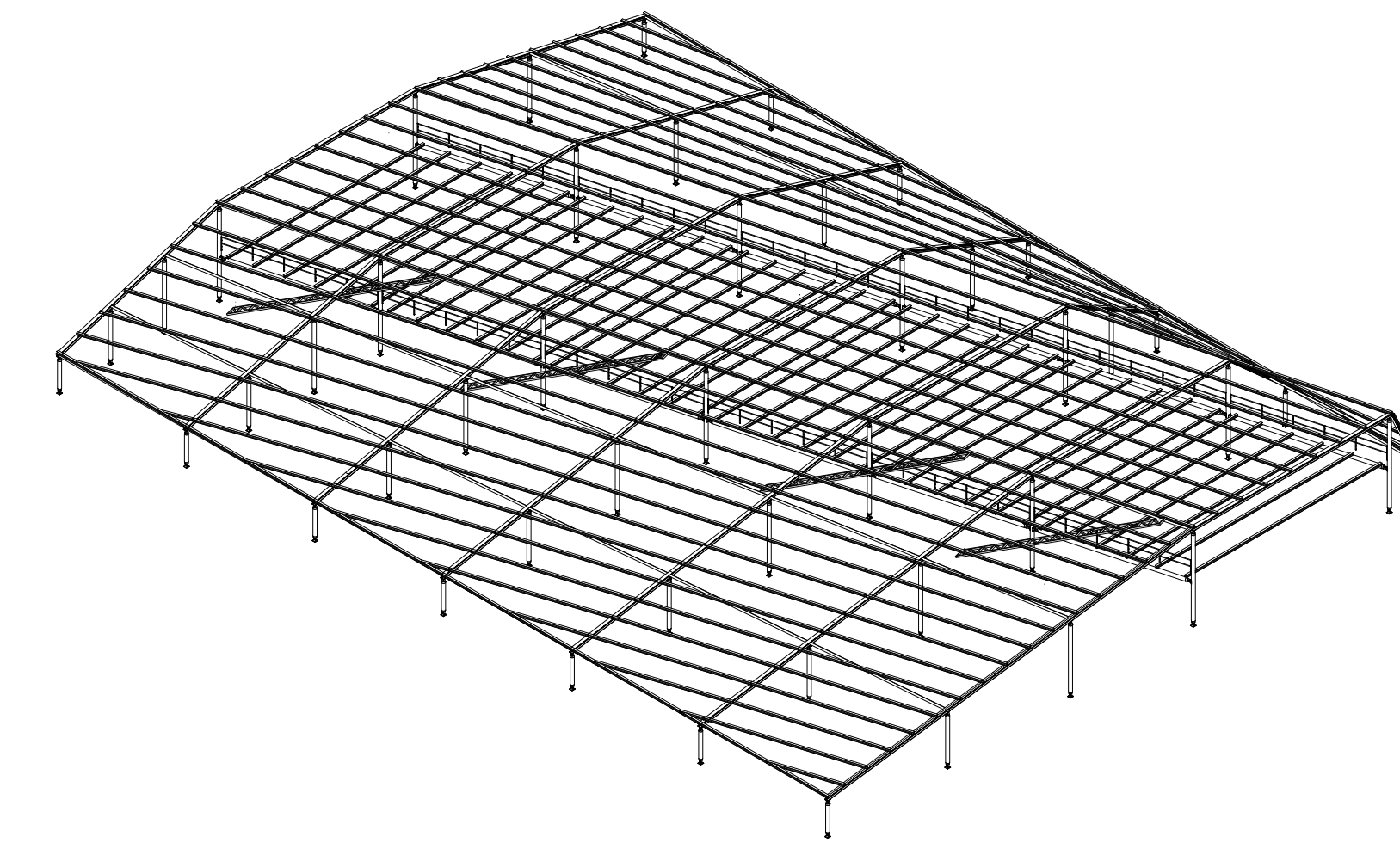
## TECHNOLOGY



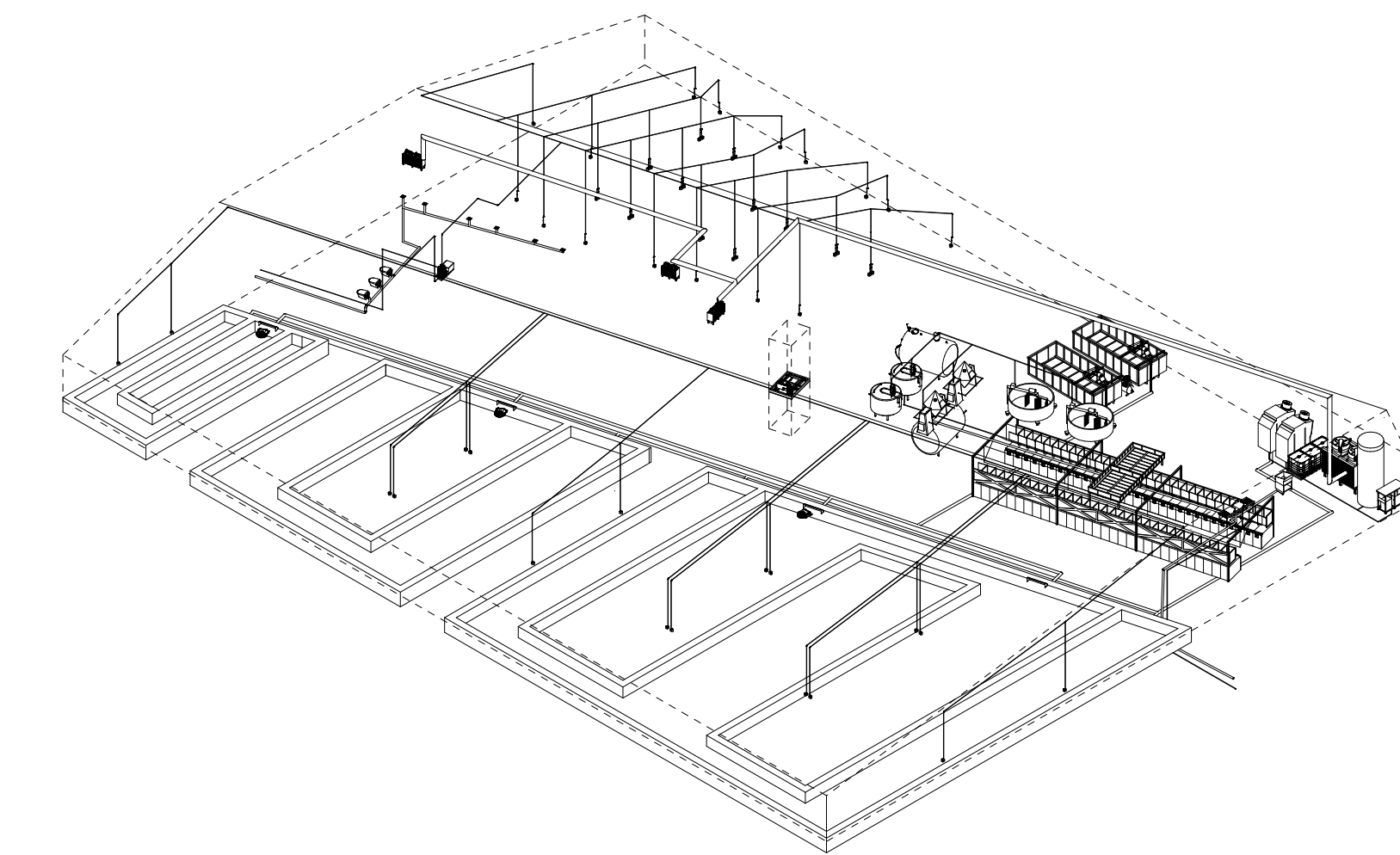
## THE COMPACT MODEL



## ARCHITECTURE

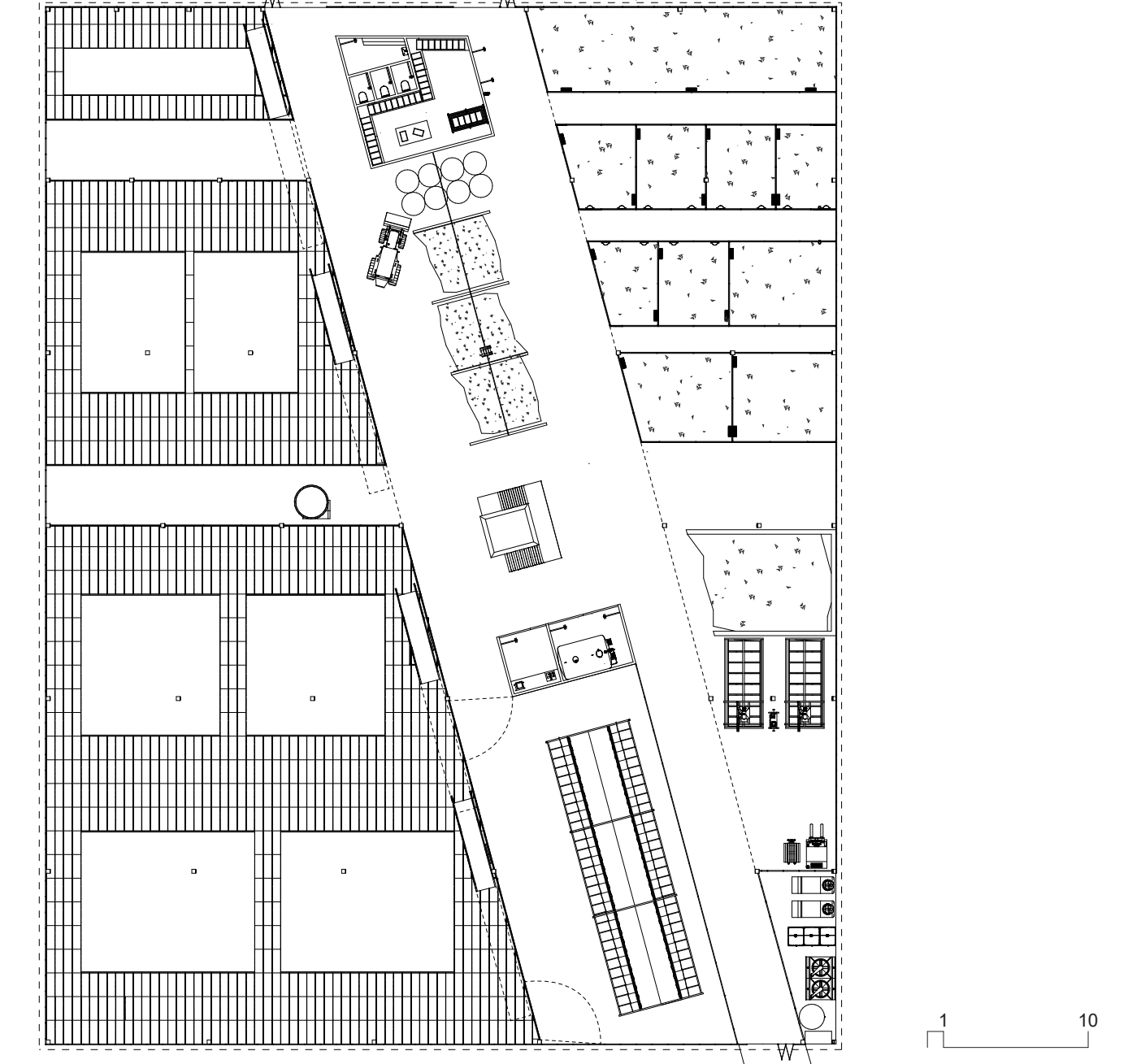


## STRUCTURE



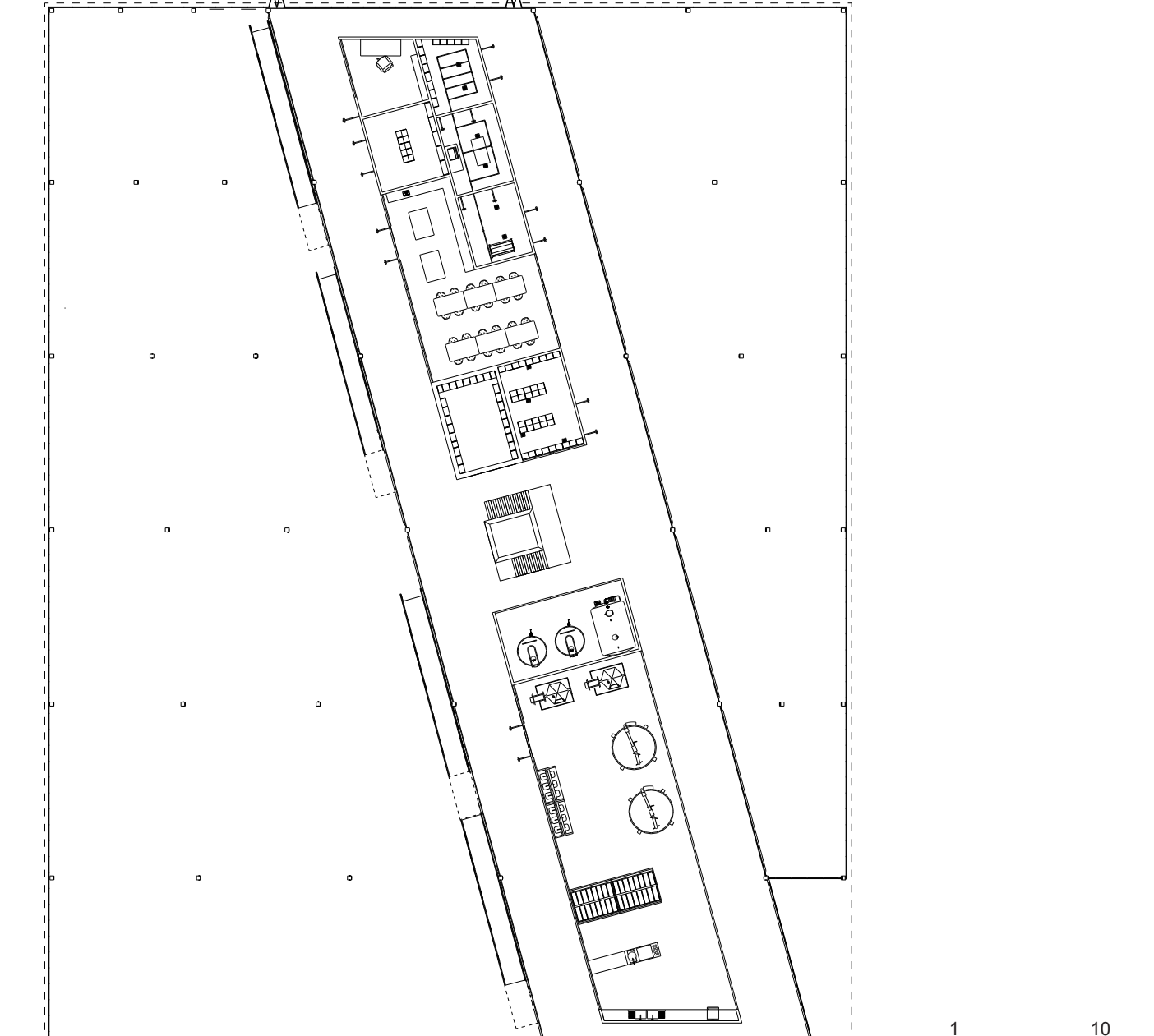
- 1 DRINKING- & CLEANING WATER LOOP
- 2 TOILETS
- 3 RAINWATER COLLECTION & PUMP
- 4 WASTE WATER OUTPUT
- 5 POWER DISTRIBUTION
- 6 ELECTRICITY & DATA OUTPUT
- 7 VENTILATION WITH HEAT RECOVERY
- 8 MANURE ROBOT & MANURE COLLECTION
- 9 MANURE COMPOSTING
- 10 DRY MANURE STORAGE
- 11 URINE STORAGE
- 12 AMMONIUM NITRATE PURIFICATION SYSTEM
- 13 AMMONIUM NITRATE STORAGE
- 14 FOOD STORAGE
- 15 FOOD MIXING/FEEDING ROBOT
- 16 MILK ROBOT
- 17 RAW MILK STORAGE
- 18 DAIRY TECHNOLOGY LAB
- 19 DAIRY PASTEURISATION
- 20 DAIRY PROCESSING
- 21 BUTTER/CHEESE PROCESSING

## INFRASTRUCTURE



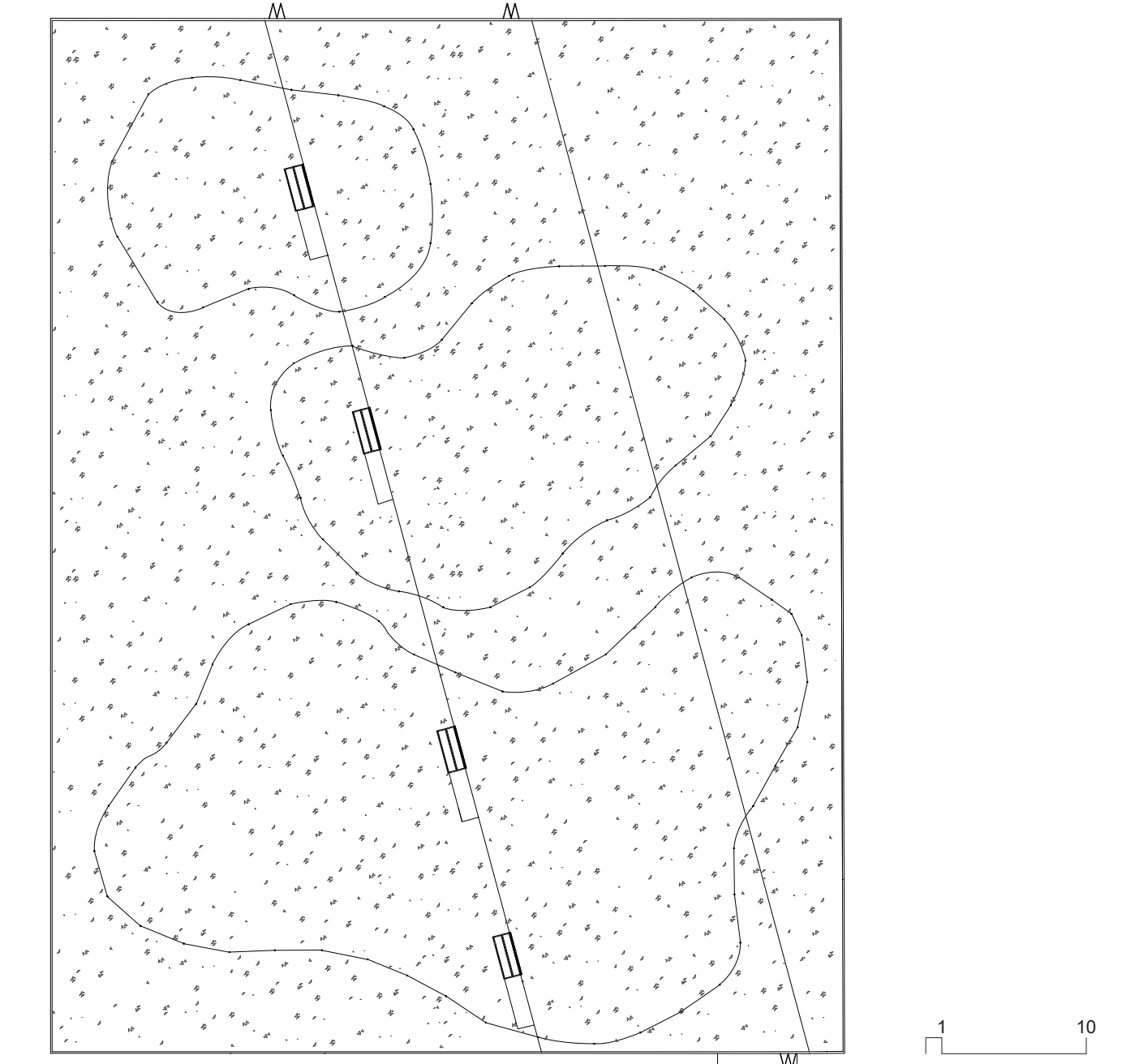
- 1 GOAT GARDEN
- 2 BUCK GARDEN
- 3 LAMB AREA
- 4 MILK ROBOT
- 5 RAW MILK STORAGE
- 6 DAIRY TECHNOLOGY LAB
- 7 FOOD STORAGE
- 8 HYGIENE STATION
- 9 TOILETS
- 10 MANURE ROBOT DOCK
- 11 MANURE PROCESSING
- 12 RAINWATER COLLECTION

## FLOOR PLAN 00



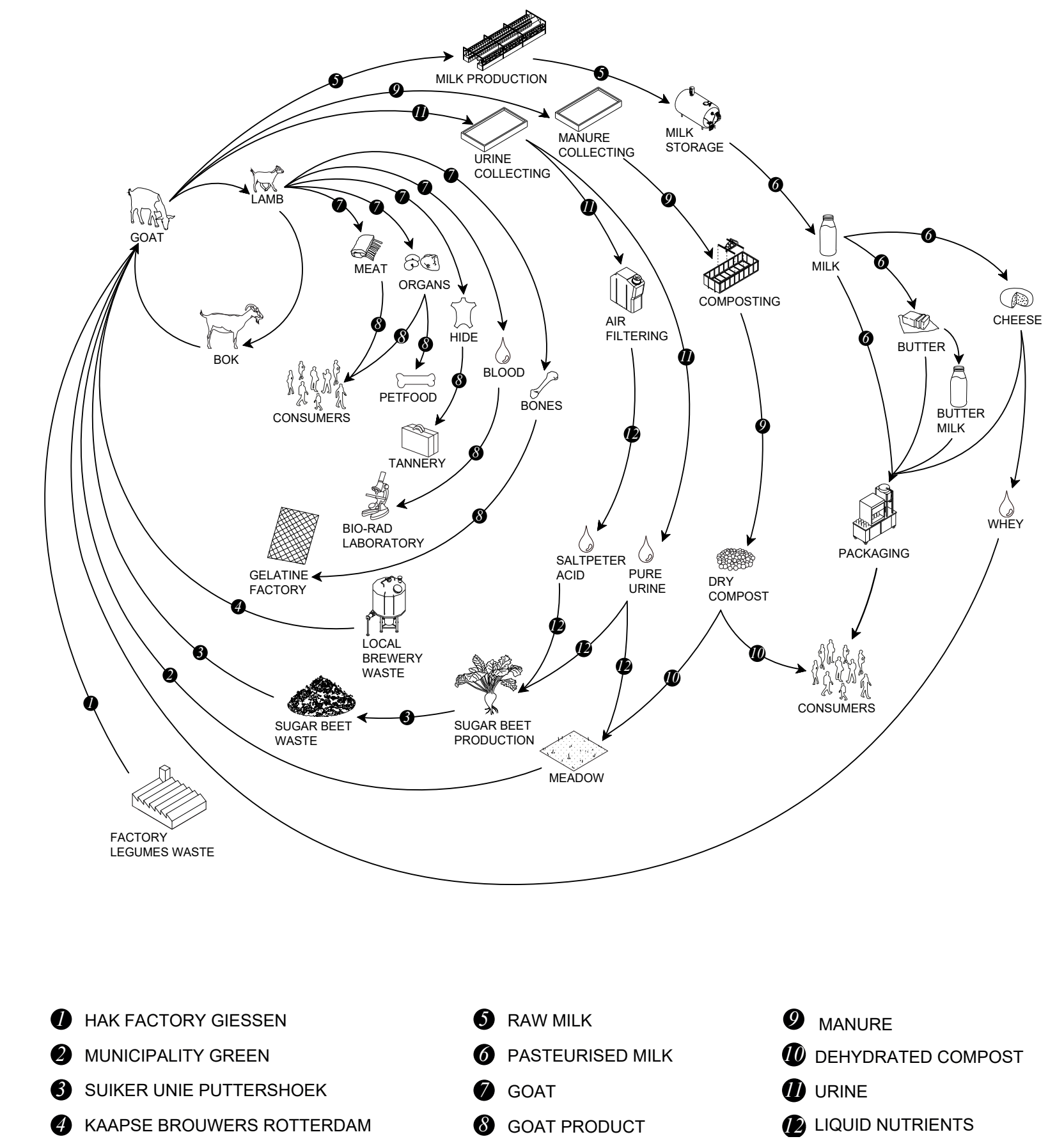
- 1 OFFICE & DATA CONTROL
- 2 INSTALLATIONS & STORAGE
- 3 CANTINE & VISITORS SPACE
- 4 DISTRIBUTION STORAGE
- 5 COOLED STORAGE
- 6 MEAT PROCESSING
- 7 COOLED MEAT STORAGE
- 8 DAIRY PASTEURISATION
- 9 DAIRY PROCESSING
- 10 BUTTER PROCESSING
- 11 CHEESE PROCESSING
- 12 PACKAGING

## FLOOR PLAN 01



## FLOOR PLAN 02

## CONCEPT



## CIRCULARITY

- 1 HAK FACTORY GIESSEN
- 2 MUNICIPALITY GREEN
- 3 SUIKER UNIE PUTTERSHOEK
- 4 KAAPSE BROUWERS ROTTERDAM
- 5 RAW MILK
- 6 PASTEURISED MILK
- 7 GOAT
- 8 GOAT PRODUCT
- 9 MANURE
- 10 DEHYDRATED COMPOST
- 11 URINE
- 12 LIQUID NUTRIENTS

## CIRCULARITY

# 11. UNDER ONE ROOF

CHARLOTTE MEIJERINK

