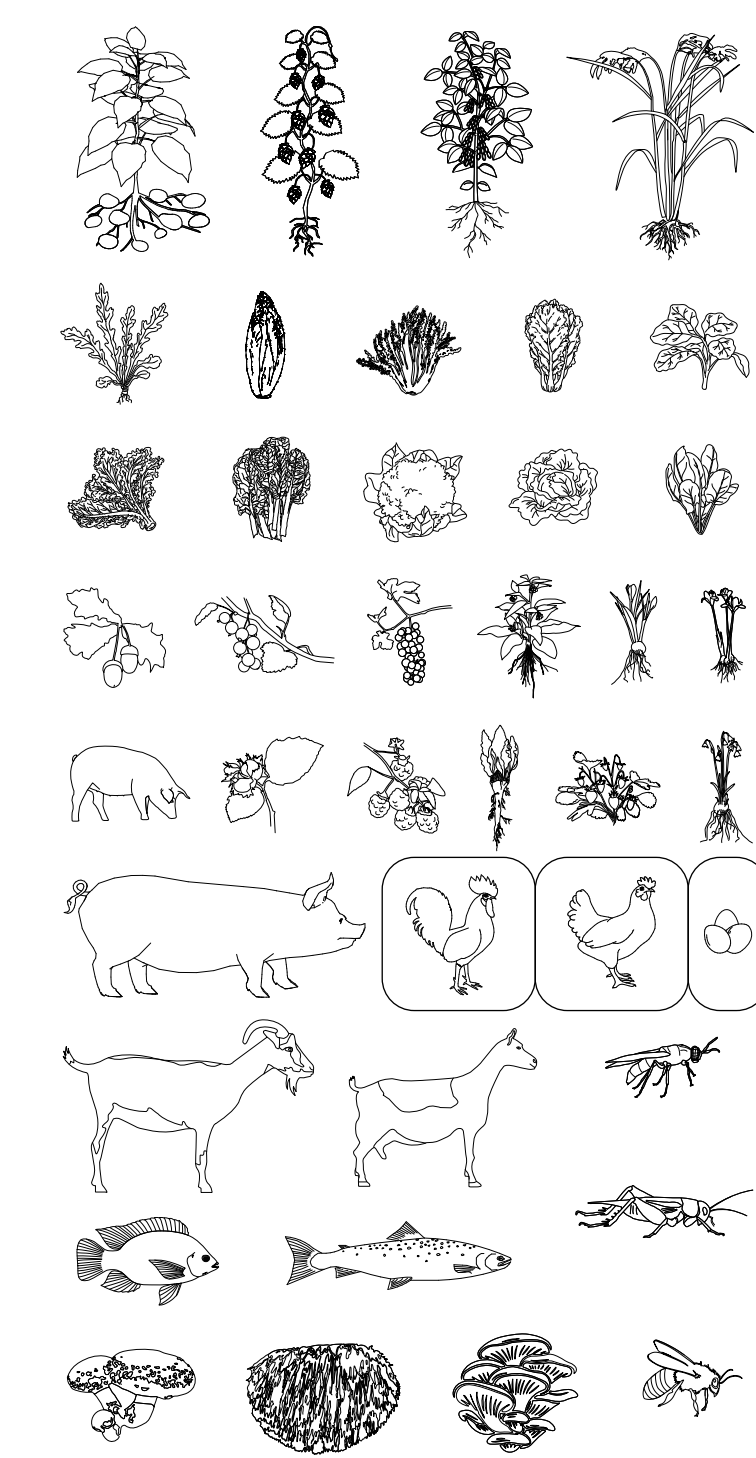


# KIP IT SIMPLE

FOLKERT BIL



A chicken farm in a big city like Rotterdam. Is it possible to keep the farm running without livestock transport? This design is a circular chicken farm to avoid, among other things, the transport of livestock in the city.

This chicken farm is a four in one farm. Eggs are hatched, where the chicks are used for meat production or to grow up for the production of consumption eggs or hatching eggs. The only input for this chicken farm is the feed. Besides keeping chickens, the eggs are packed, the meat halal slaughtered and the chicken manure dried and packed.

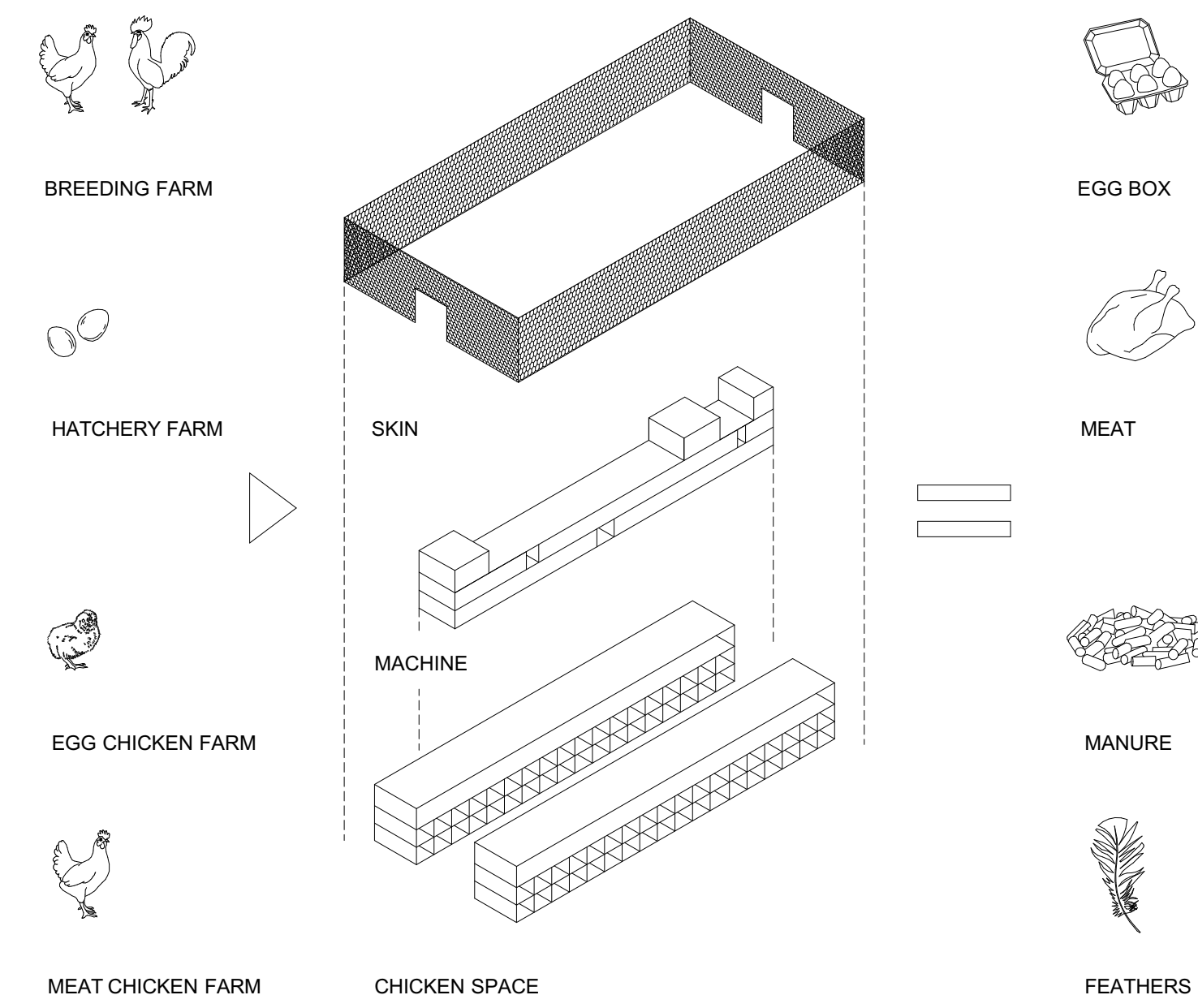
This makes the machine the beating heart of the design, where the chickens are the blood veins. To keep this running 40,000 chickens are needed. Every day both 250 chickens are born and 250 chickens are slaughtered.

Ultimately that comes down to an annual basis:

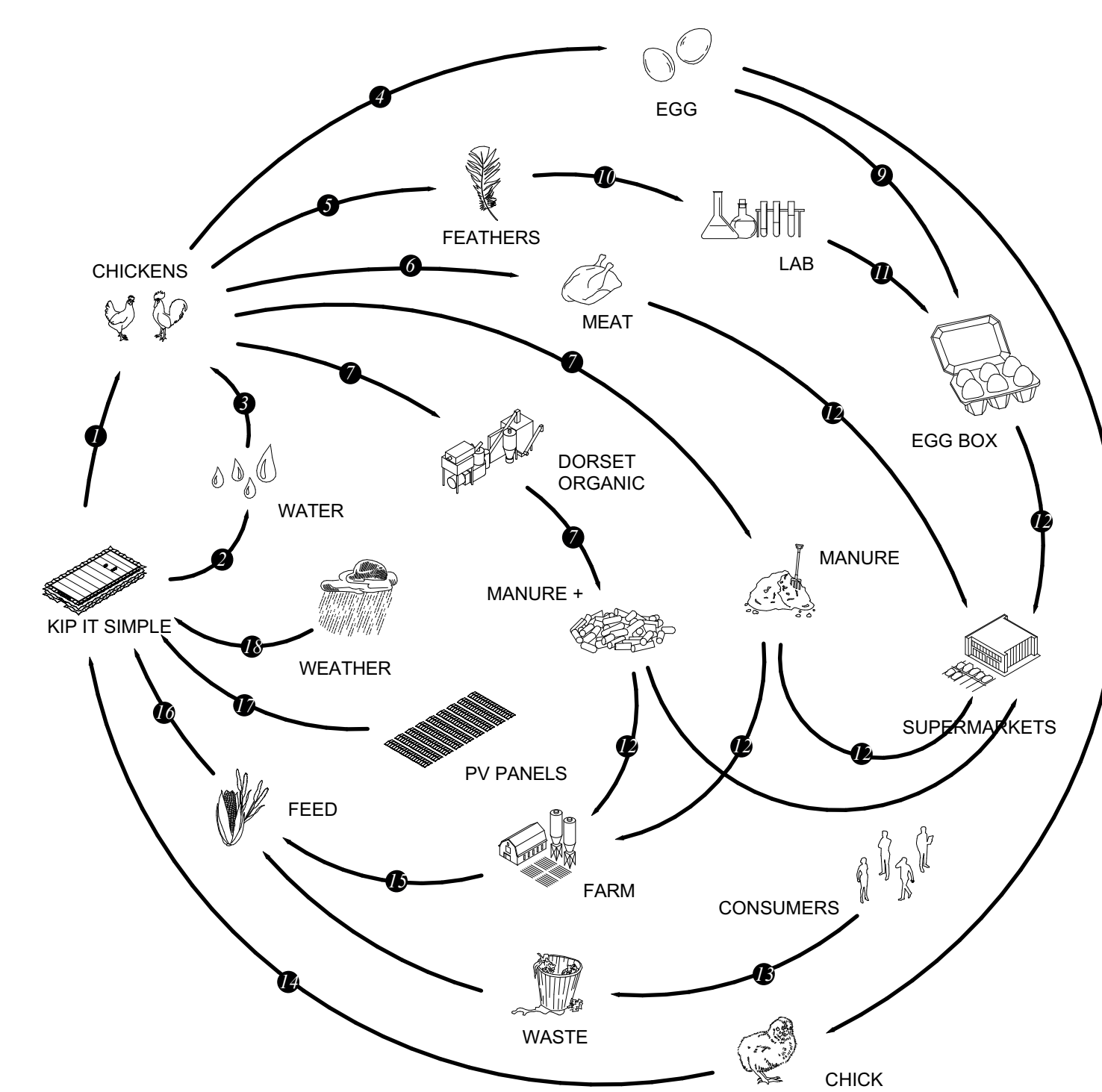
- 5.5 million eggs 0.34 / pc
- 91,5 thousand meat chickens 0.91 / pc
- 163,5 thousand kg of manure 0.62 / kg

- 40,000 chickens in total:
- 16.000 chick - 63 roosters
  - 18.372 egg hens - 315 hens
  - 5.250 eggs

## MENU

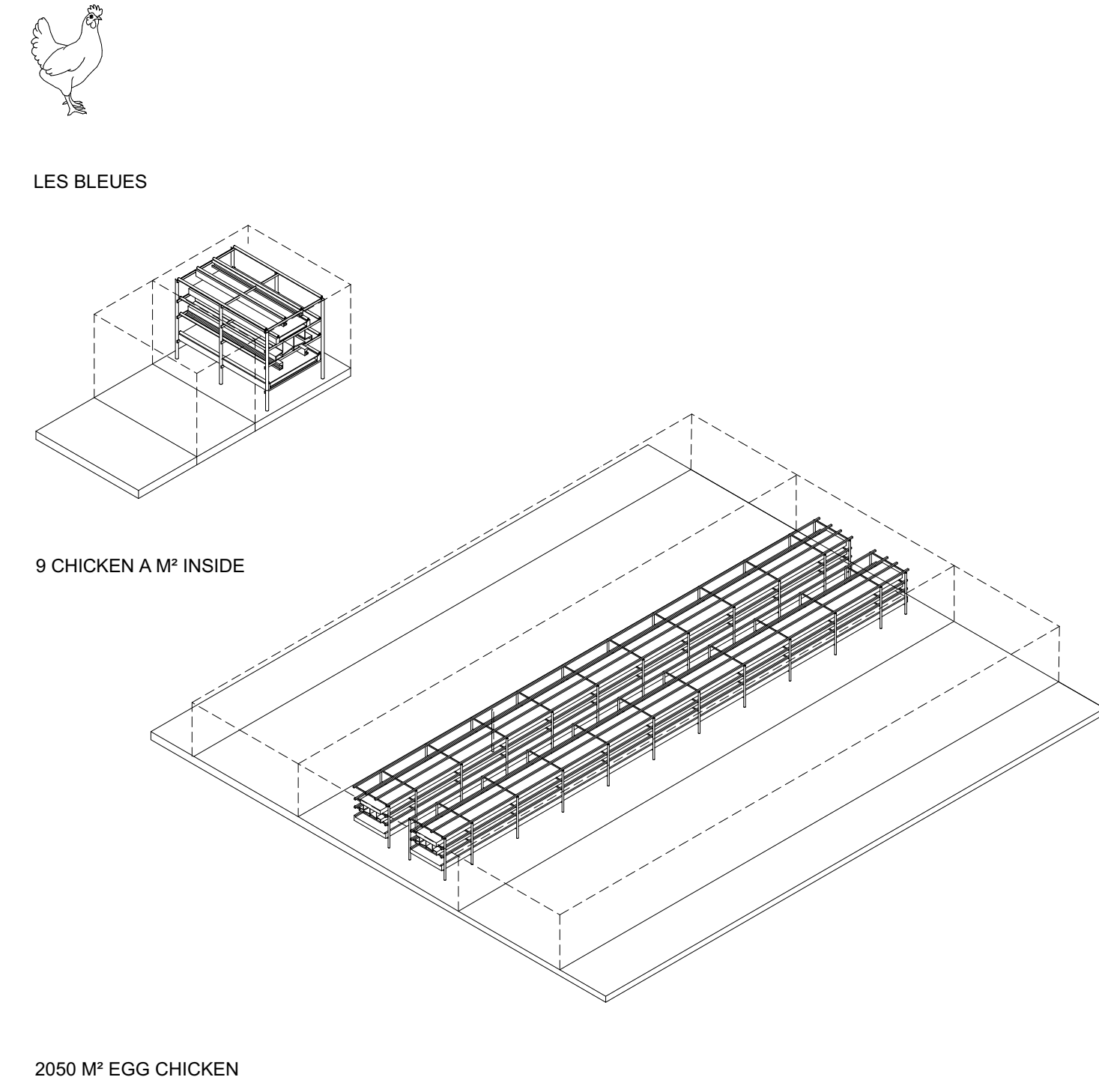


## CONCEPT

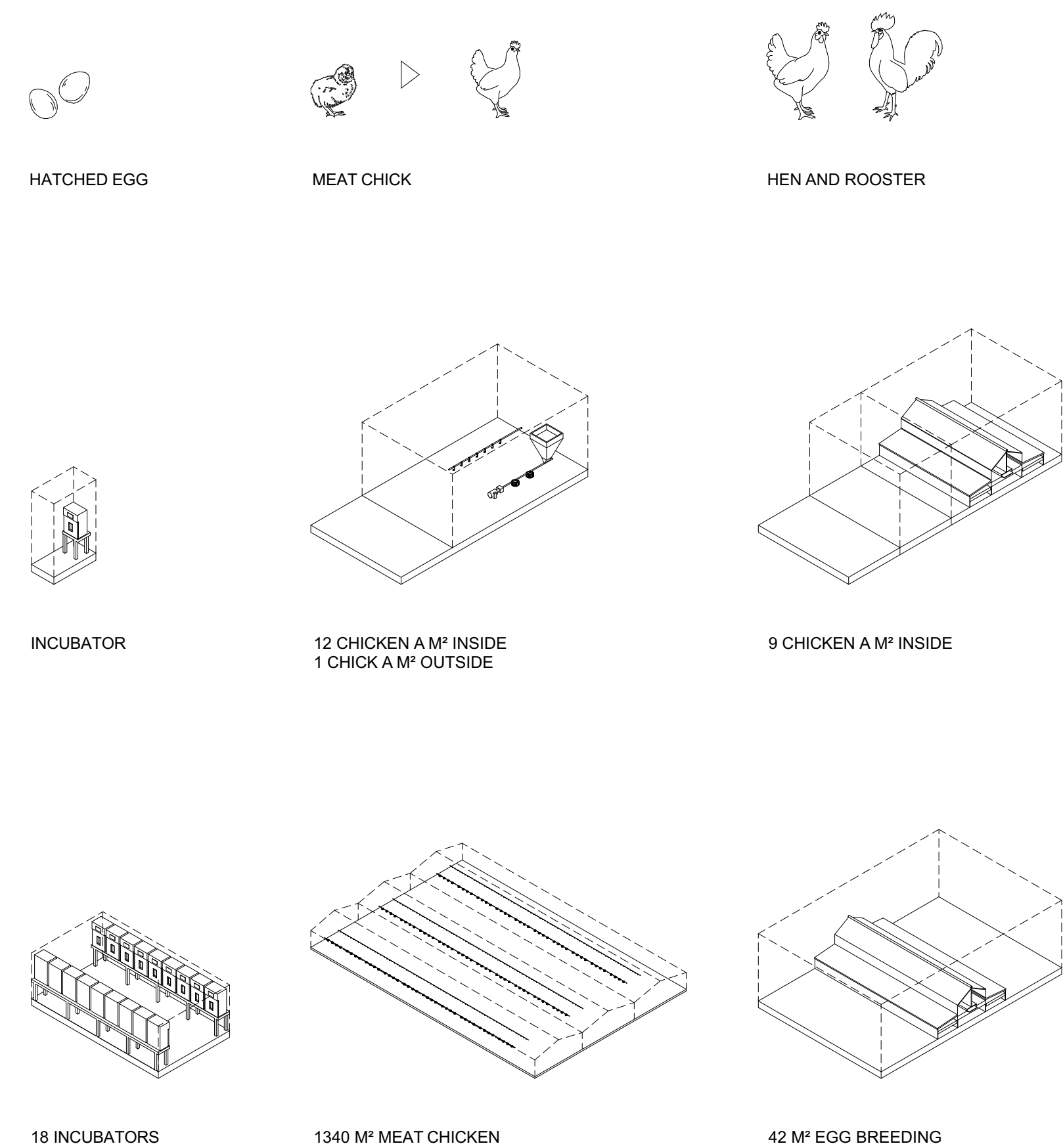


- 1 CHICKEN FEED
- 2 WATER OPVANGEN
- 3 CLEANING
- 4 EGG PRODUCTION
- 5 KIPPEN PLUKKEN
- 6 SLACHTEN
- 7 MEST VERWERKEN
- 8 BROEDEN
- 9 VERPAKEN
- 10 BIJPLASTIK
- 11 VERPAKING MATERIAAL
- 12 VERKOPEN
- 13 REST AFVAL
- 14 OPGRUIELEN
- 15 LANDBOUW
- 16 INPORT VOER
- 17 ELECTRICITY
- 18 REGEN WATER

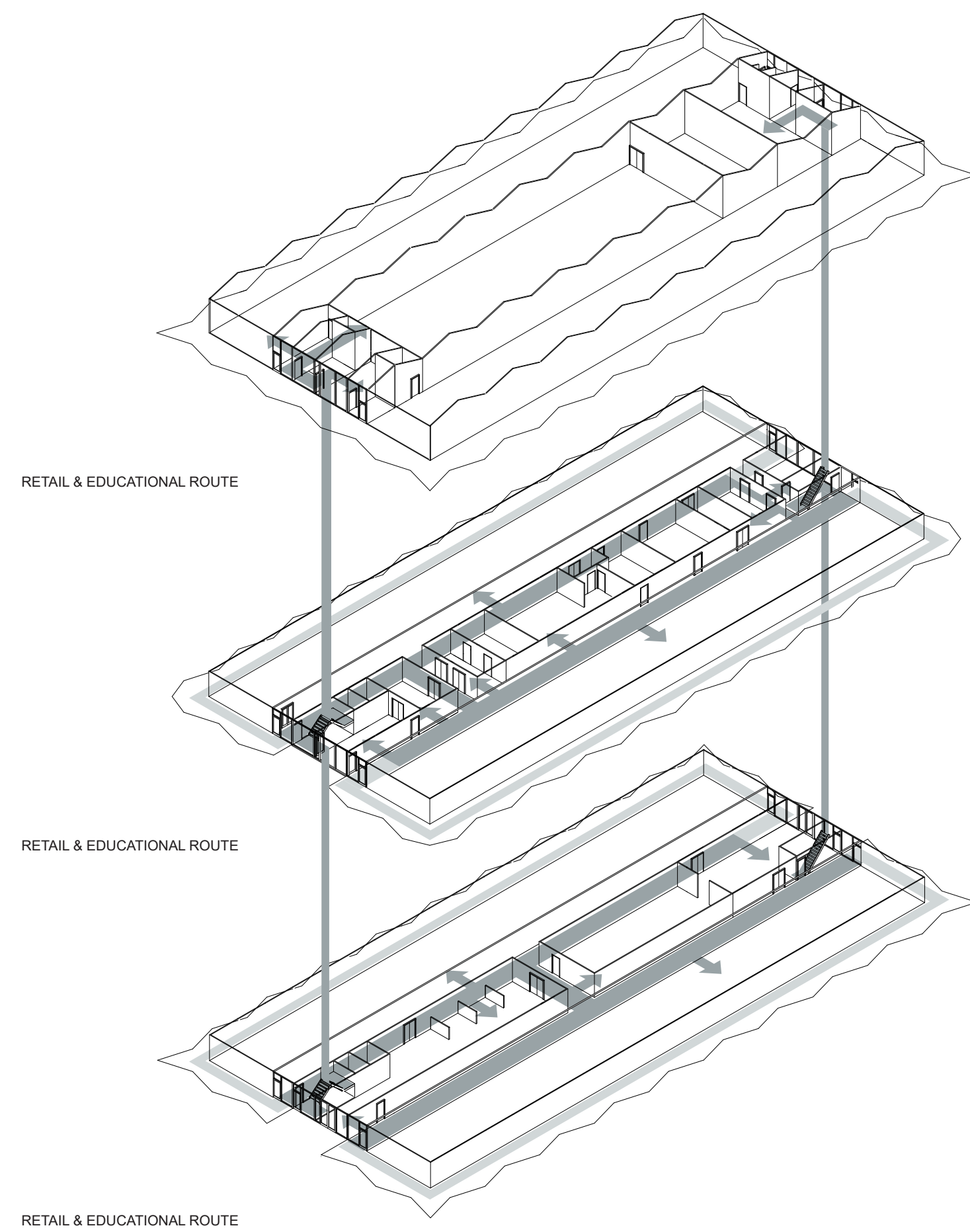
## CIRCULARITY



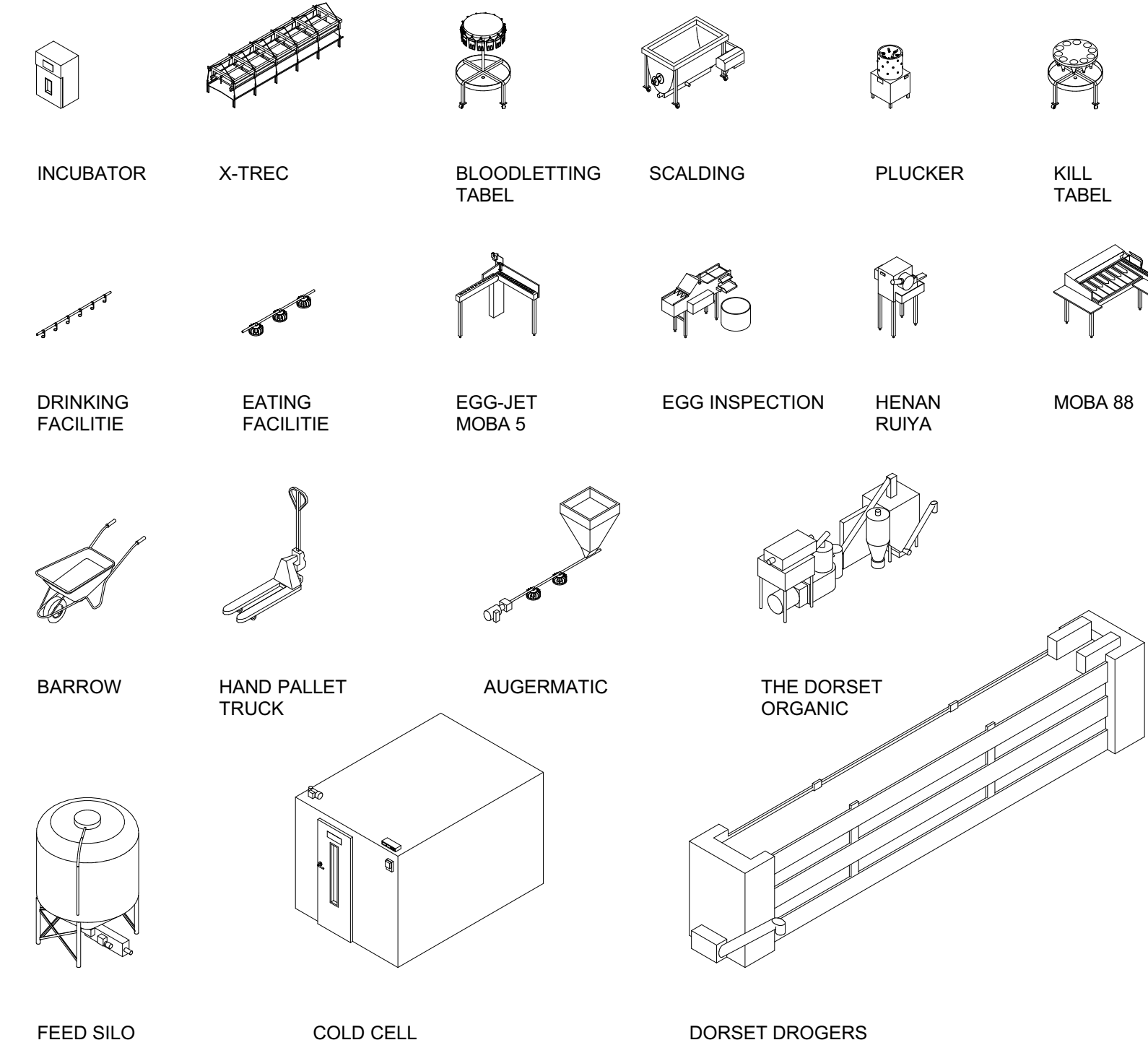
## PRODUCTION FLOOR



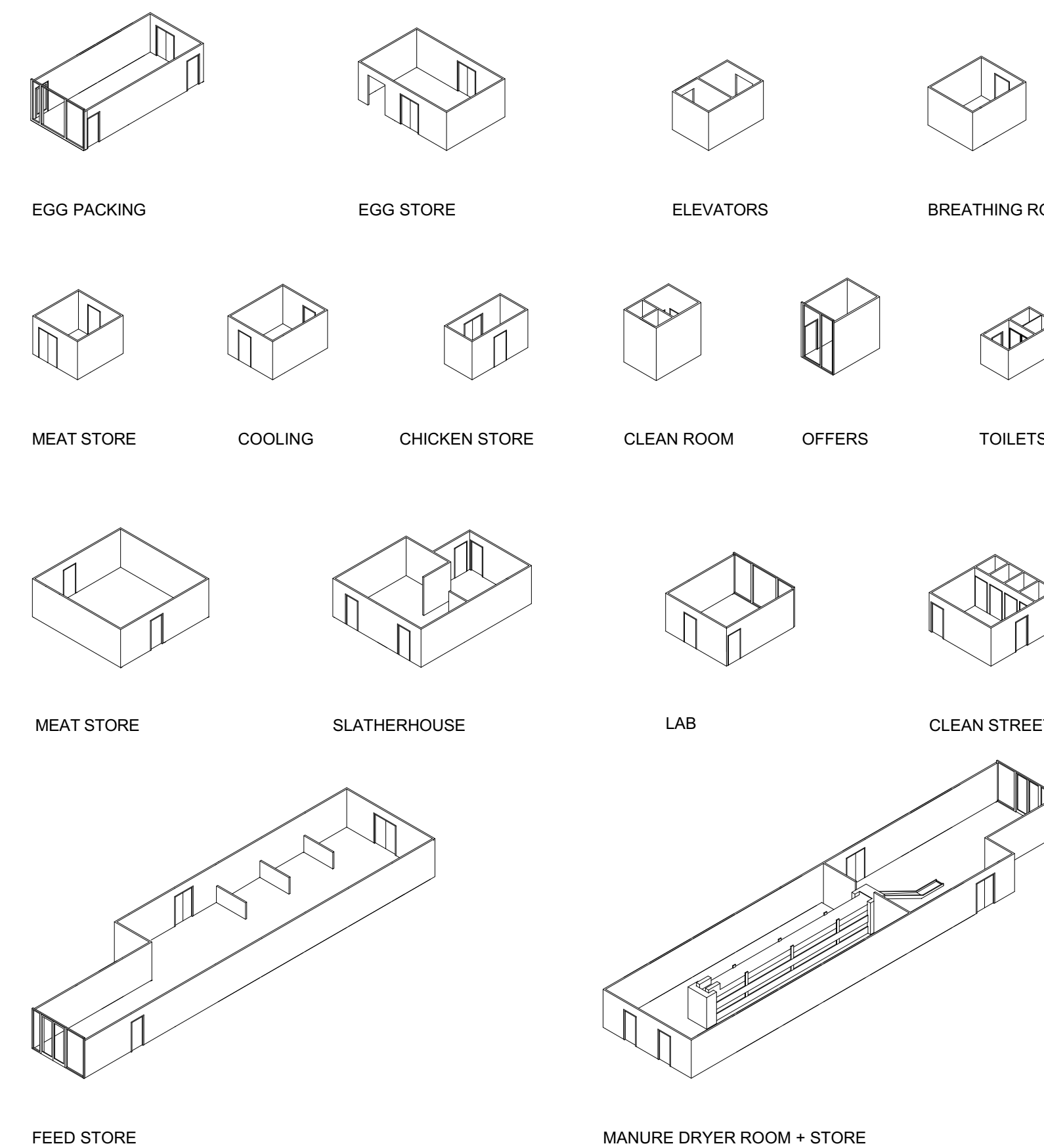
## PRODUCT SYNERGY



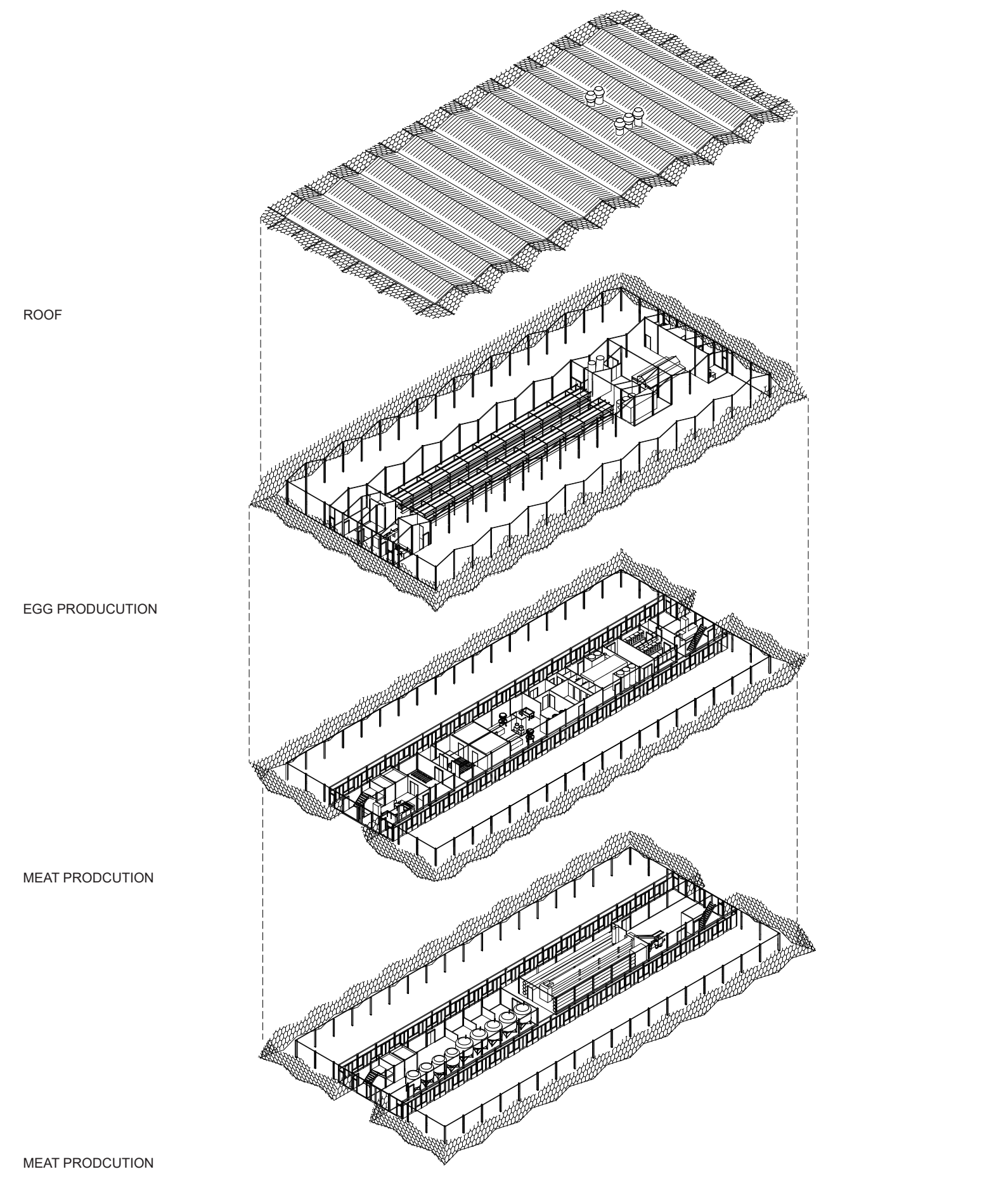
## AGRI-CULTURE



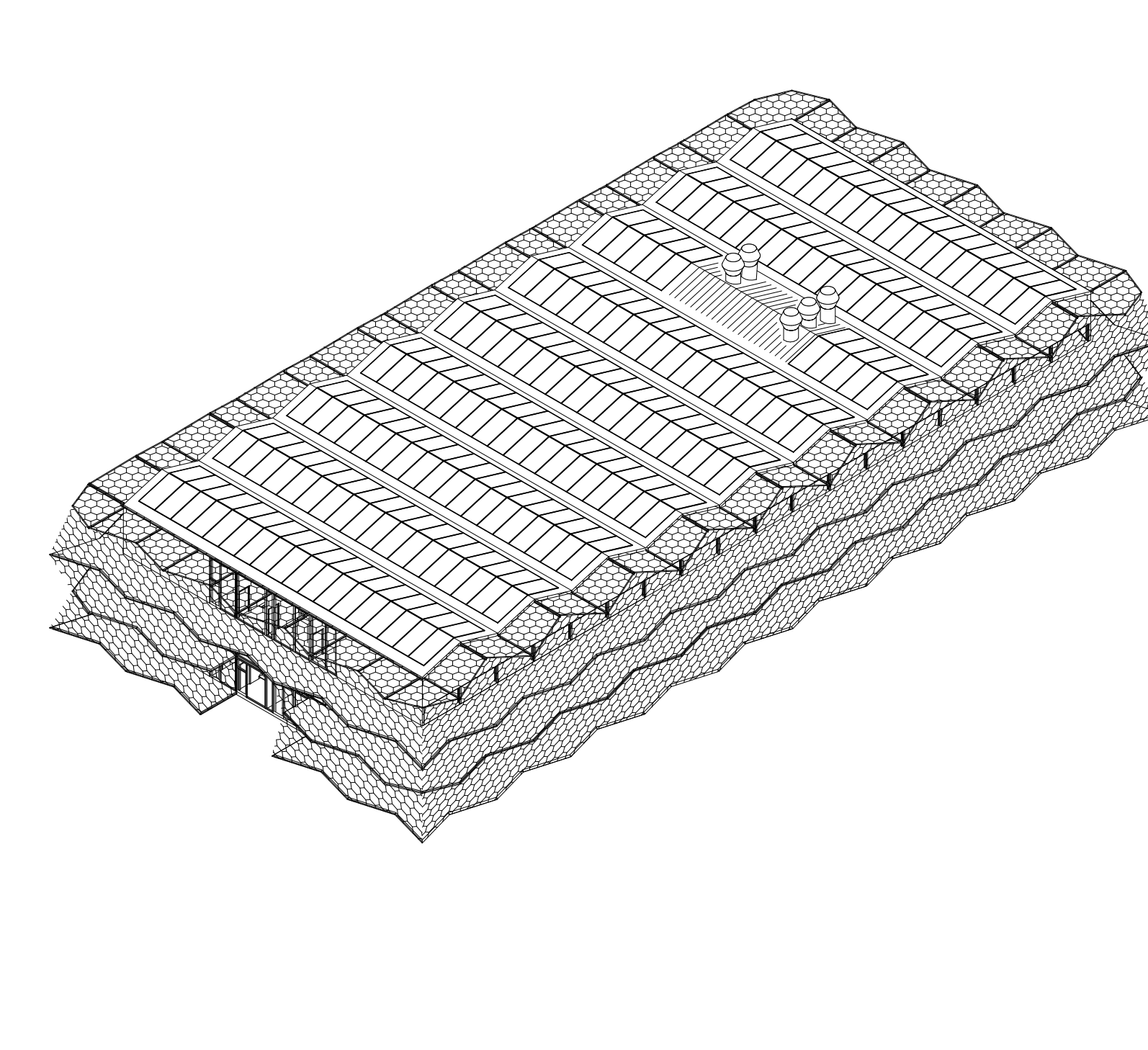
## PROCESSING & PACKAGING



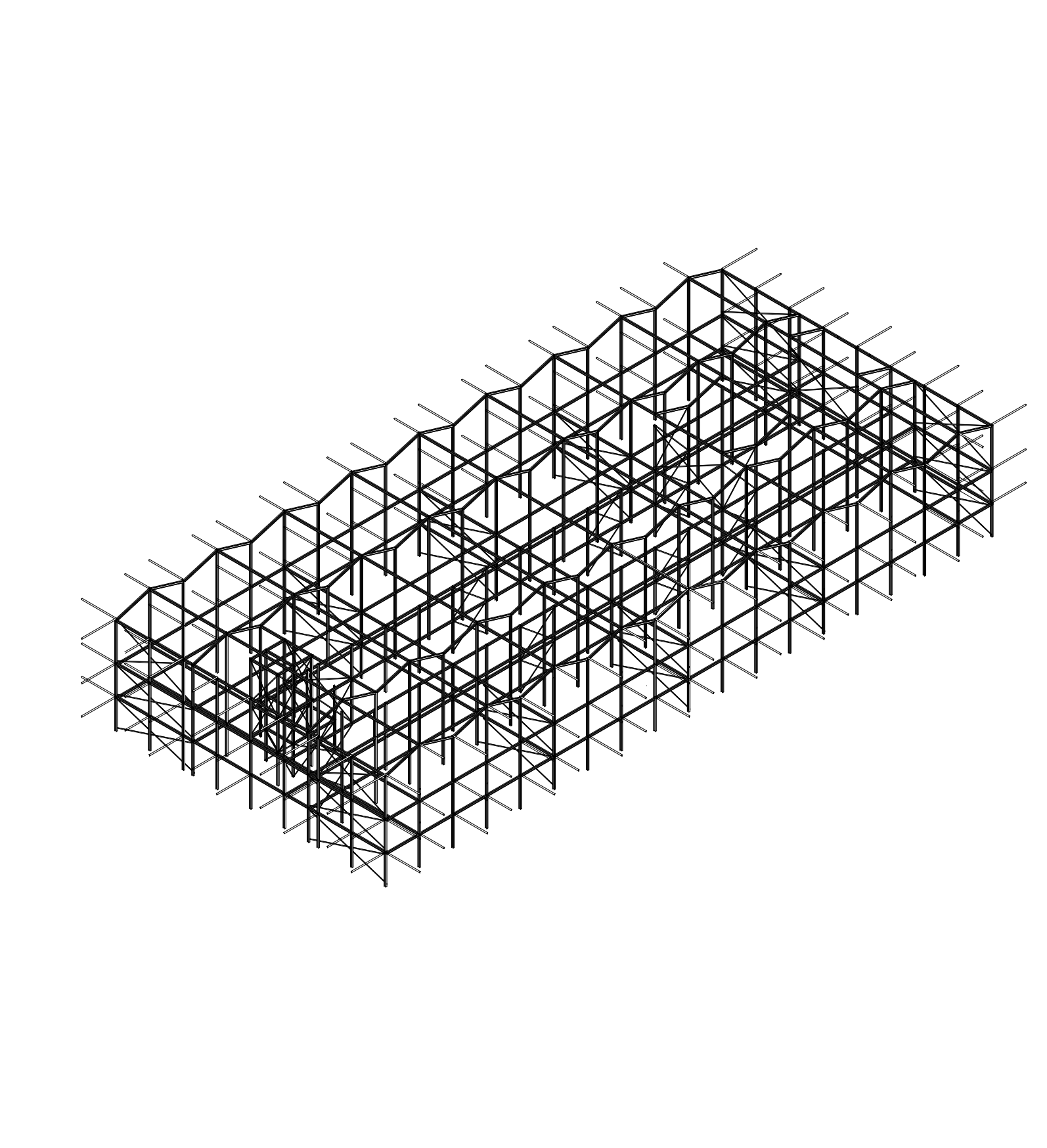
## TECHNOLOGY



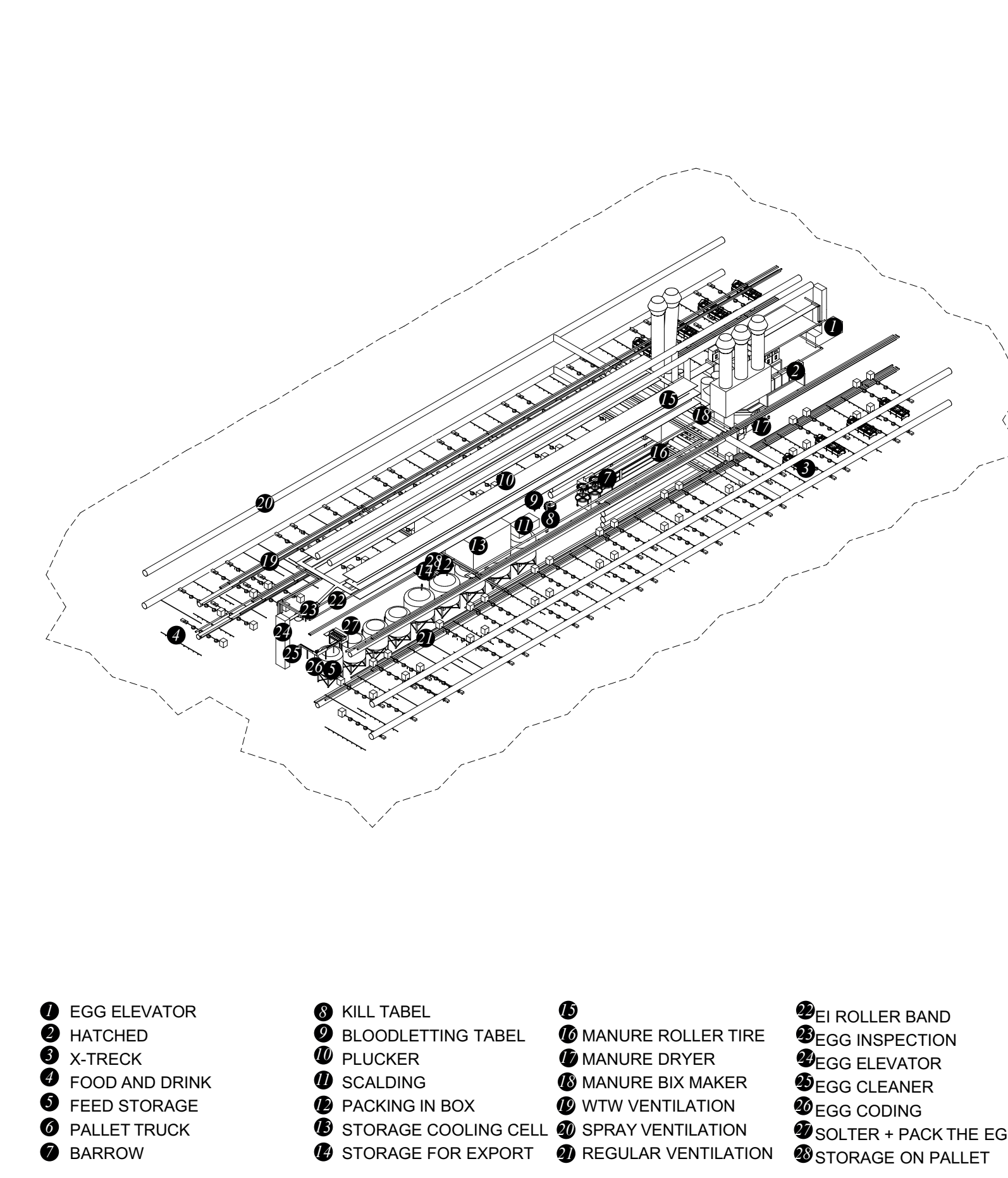
## THE COMPACT MODEL



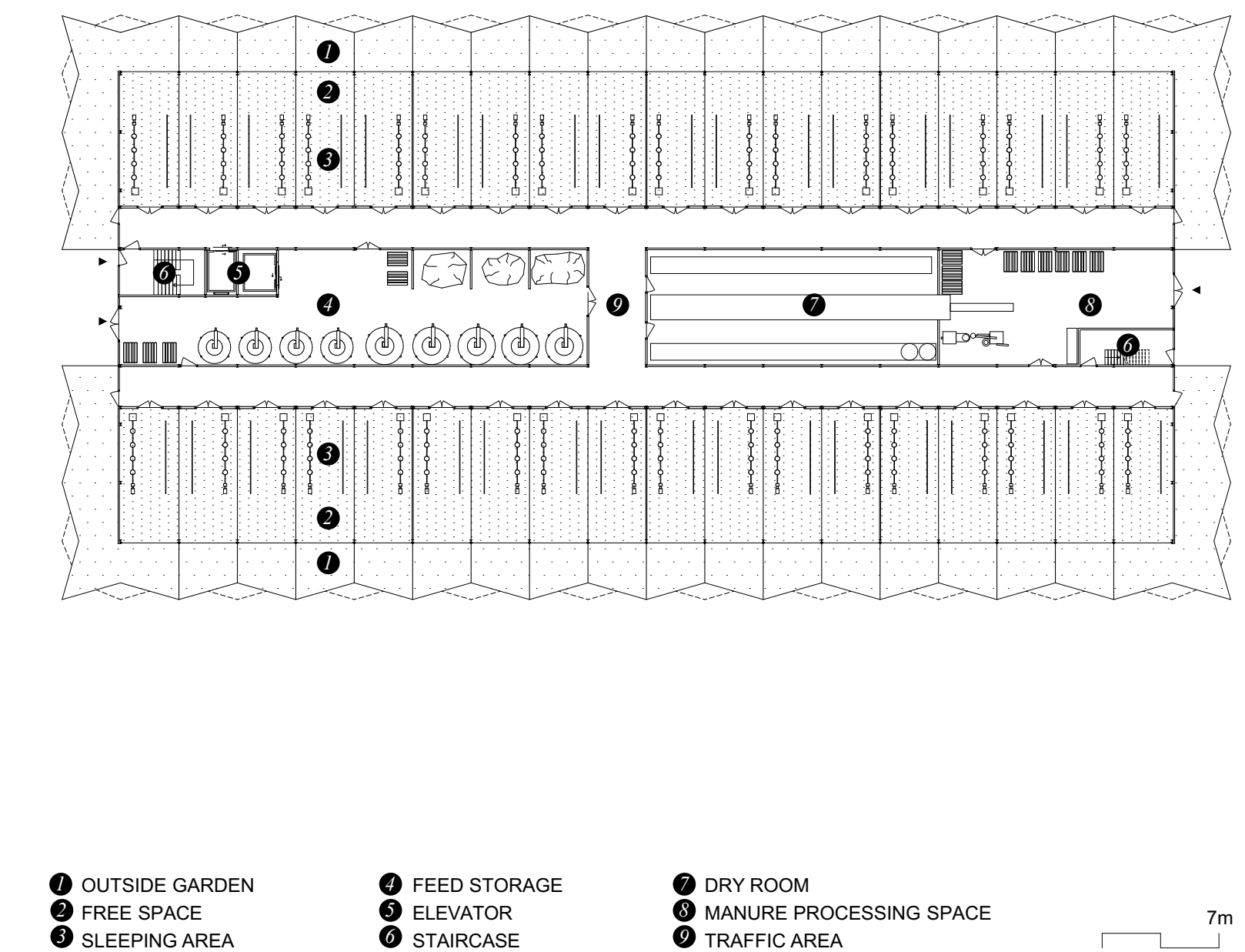
## ARCHITECTURE



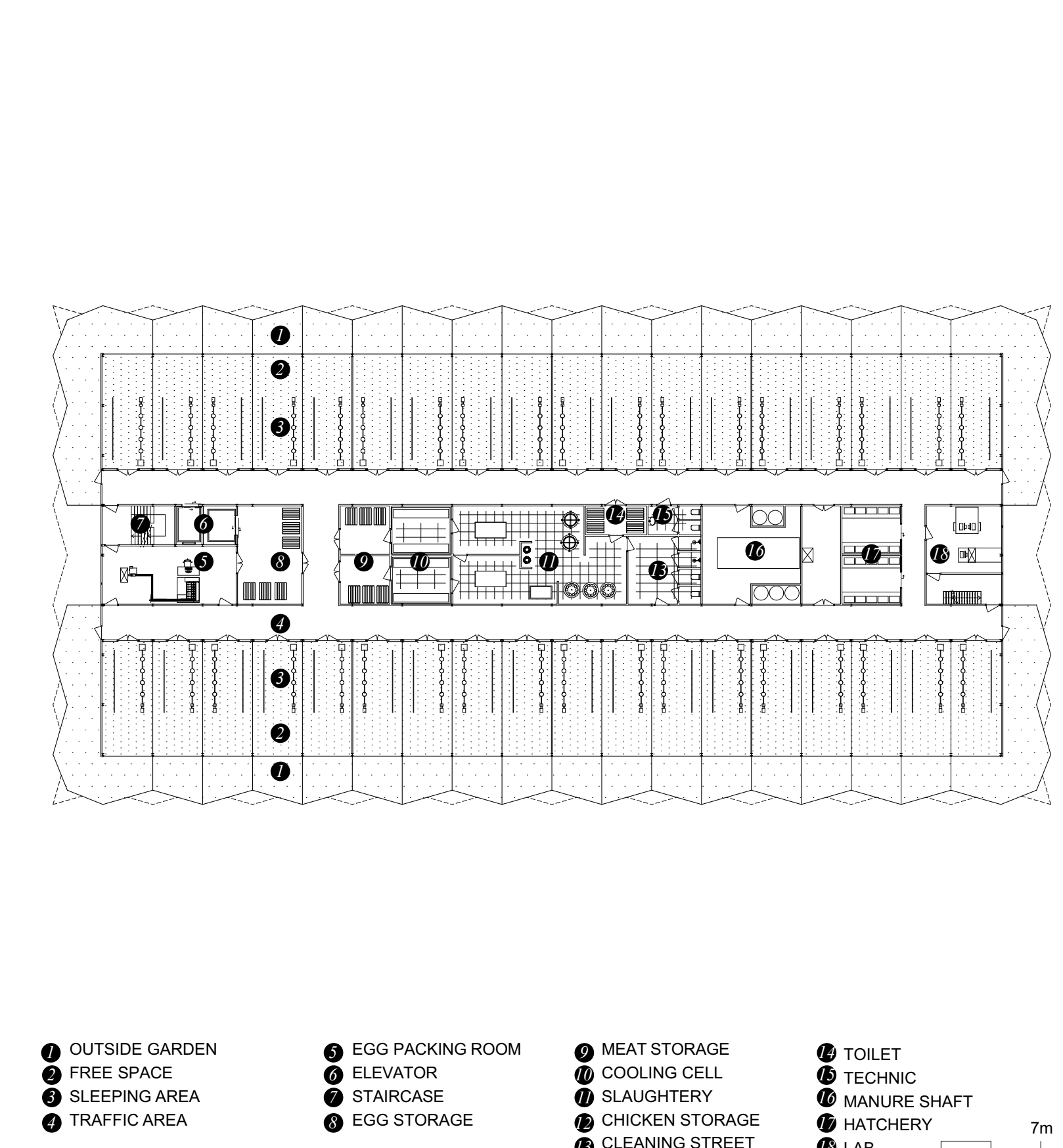
## STRUCTURE



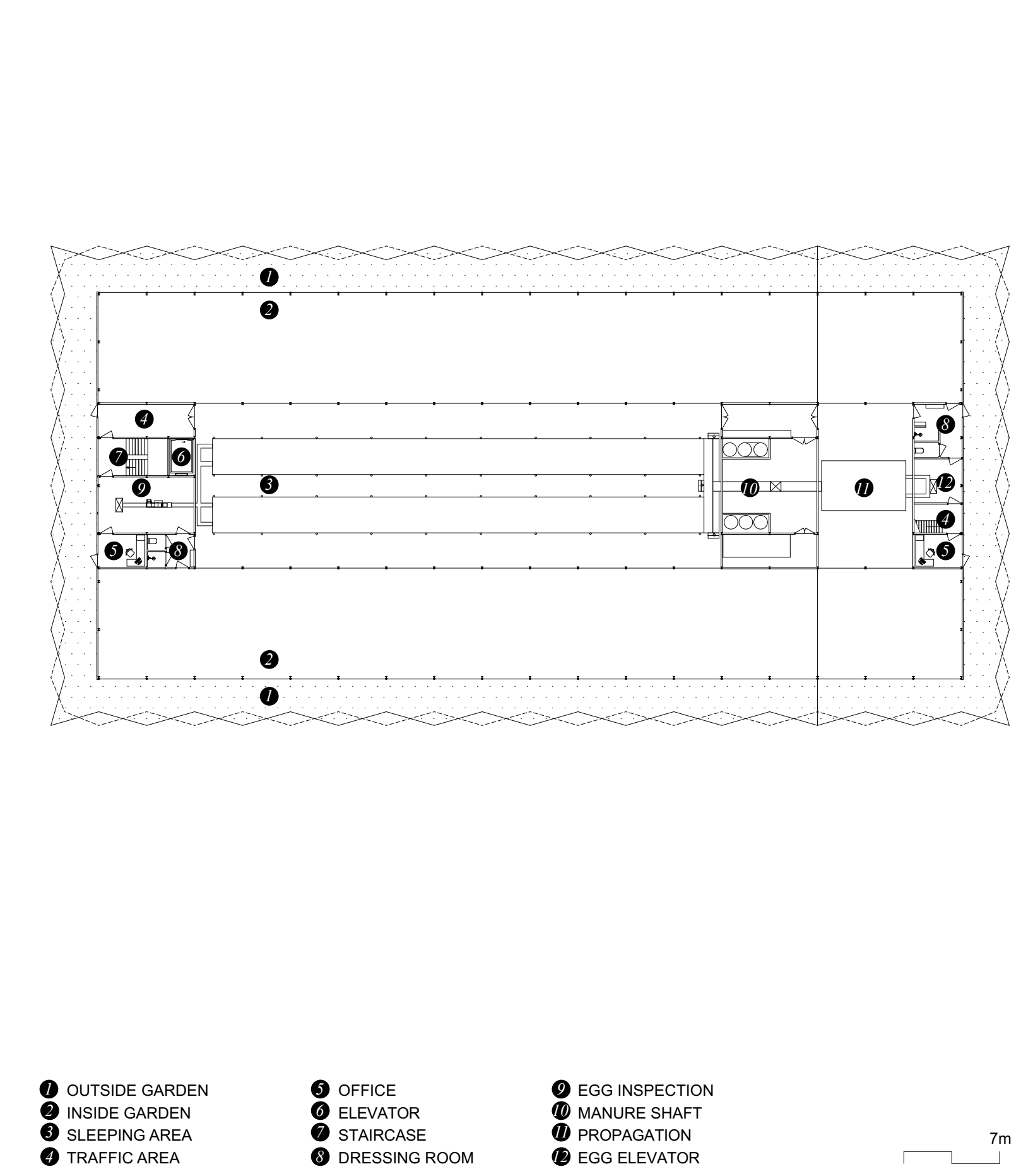
## INFRASTRUCTURE



## FLOOR PLAN 00



## FLOOR PLAN 01



## FLOOR PLAN 02