

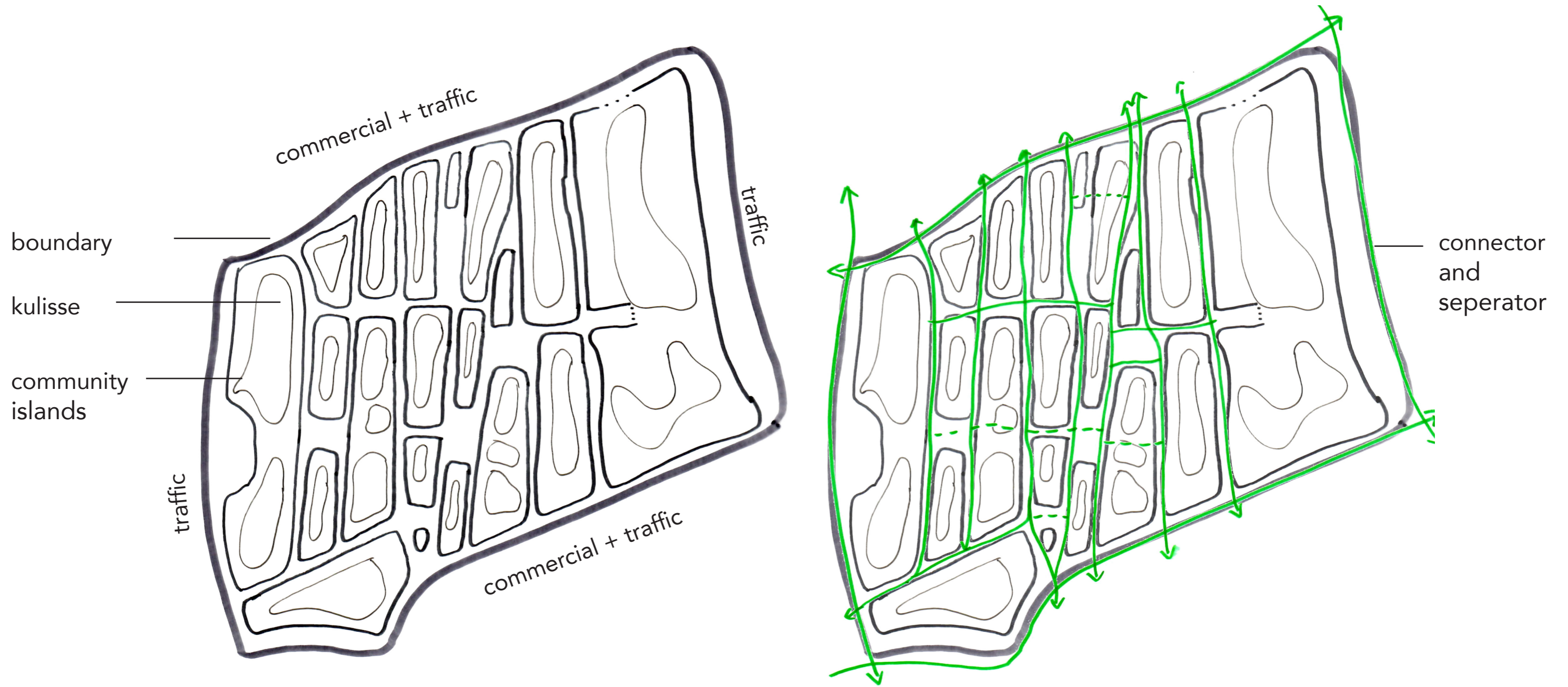
the (new) neighborhood home



amenities studio
arianne fleege

analysis oude westen

layers



analysis oude westen

program clusters

amenities with strong
connection to the
neighborhood

amenities neighborhood
range

amenities city range



analysis oude westen

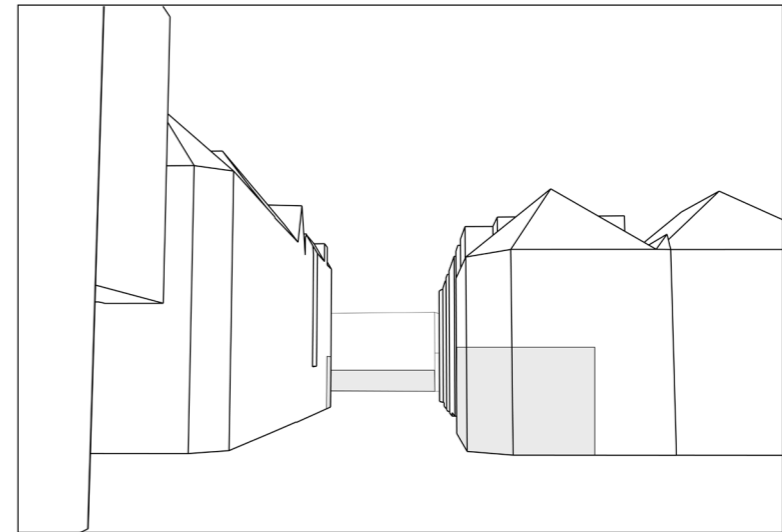
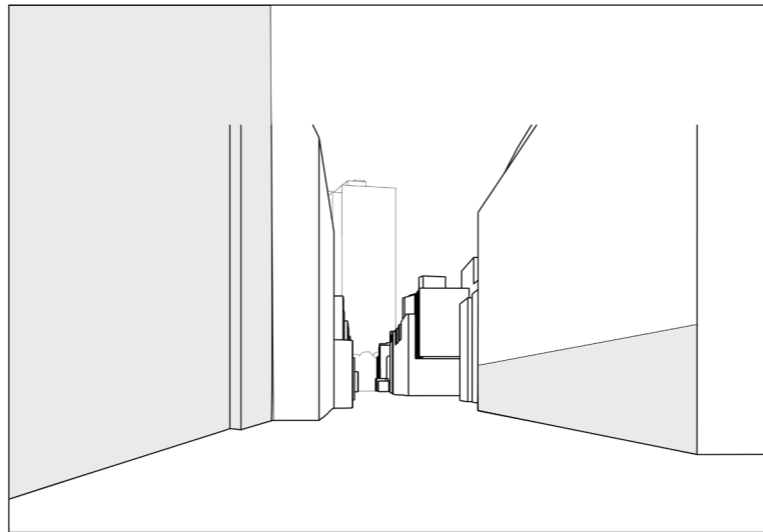
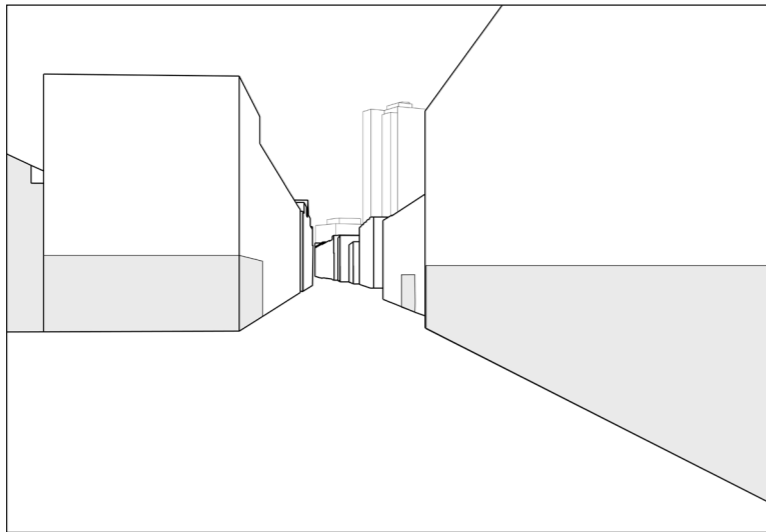
framing and perspectives

Josephstraat (Leeszaal + art galleries)

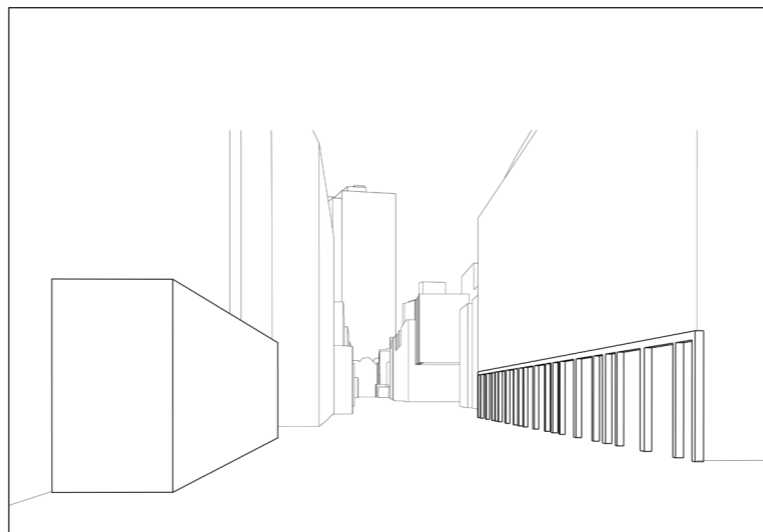
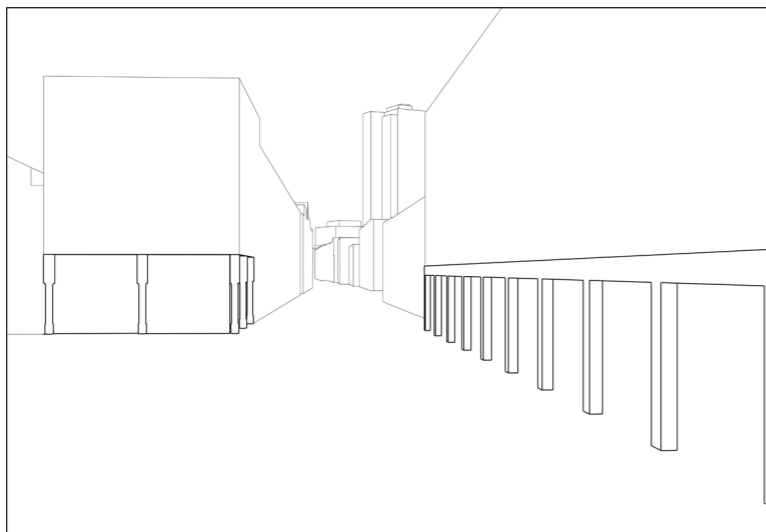
Gouvernestraat (Kino + bakery + art galleries)

Gaffeldwarstraat (photostudio + huis van de wijk)

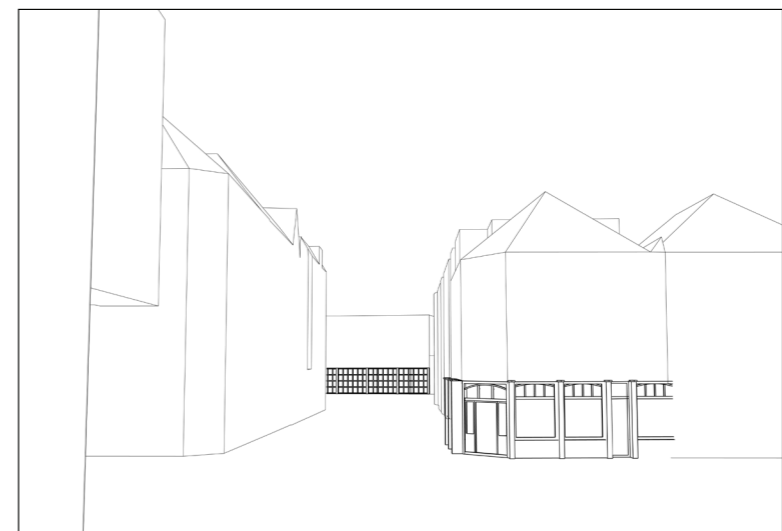
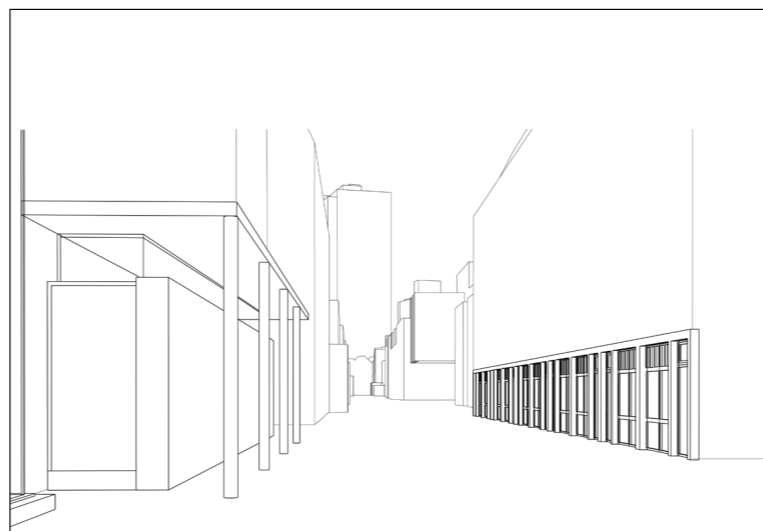
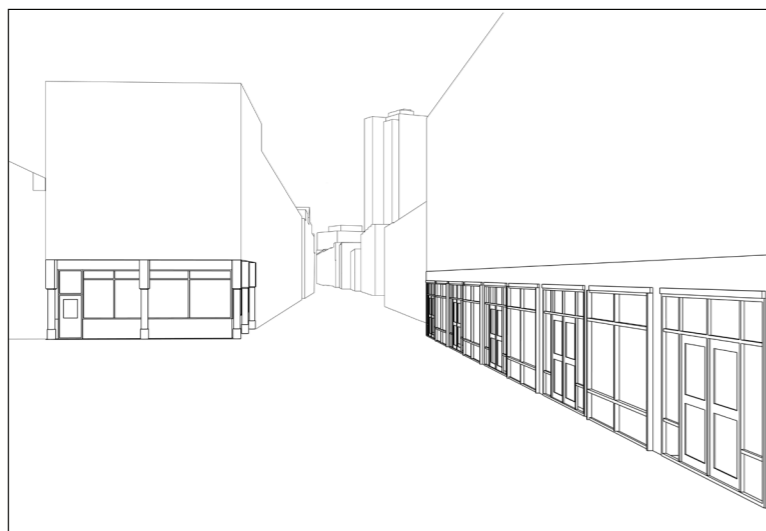
location
plinth



frame
columns + portals



refinement



social players



Aktiegroep Het Oude Westen



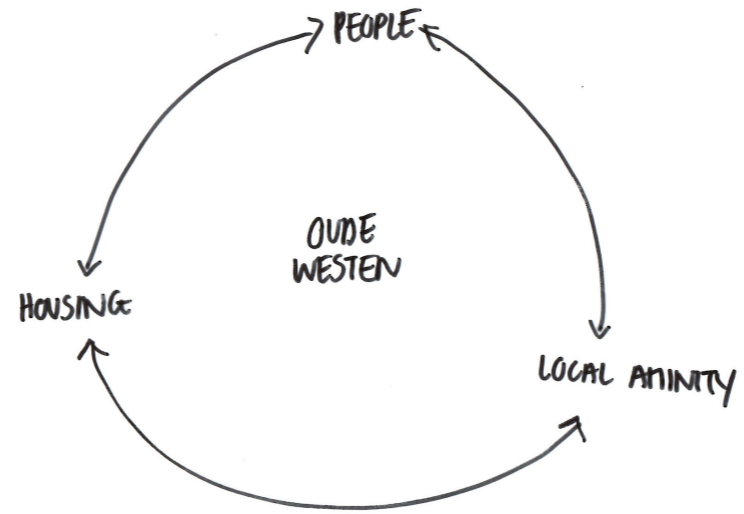
De nieuwe Gaffel



Leeszaal



starting point design proposal



**SENSING THE
NEIGHBORHOOD**

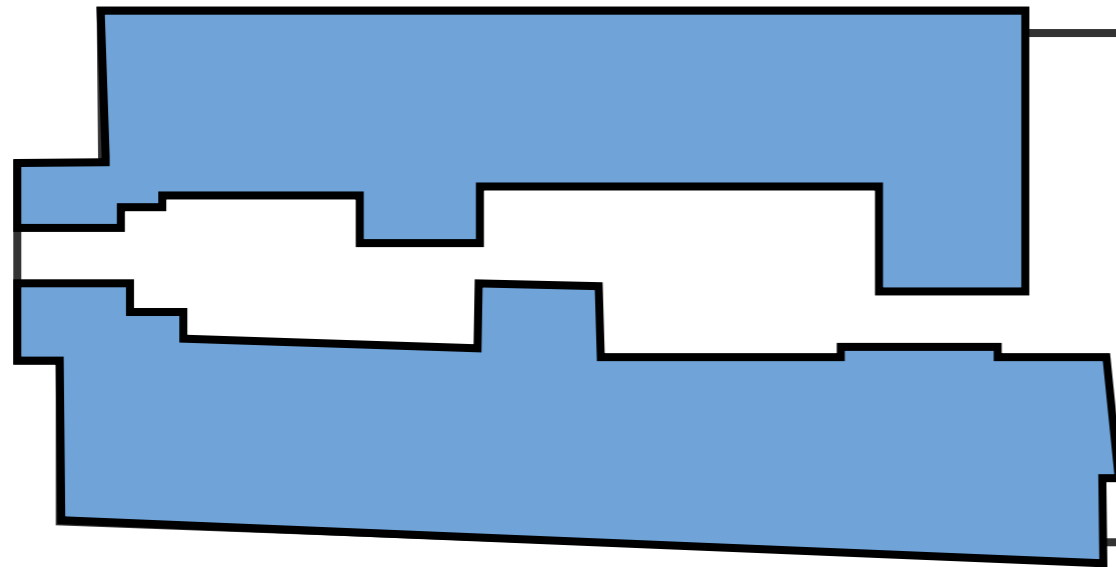
de gaffel



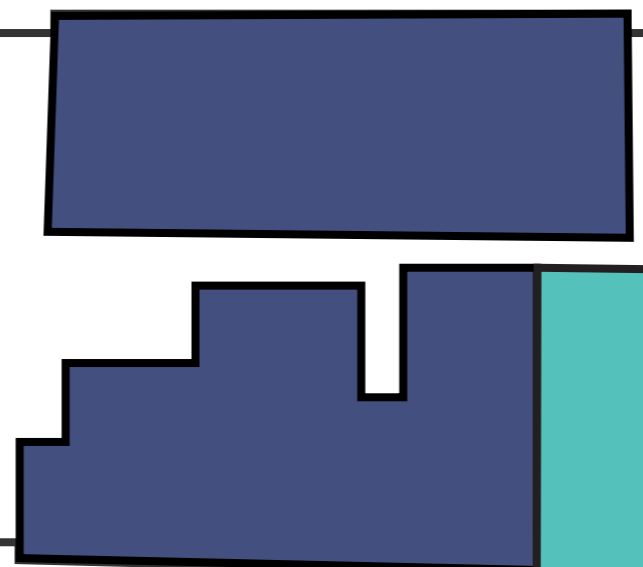
de gaffel

programme now

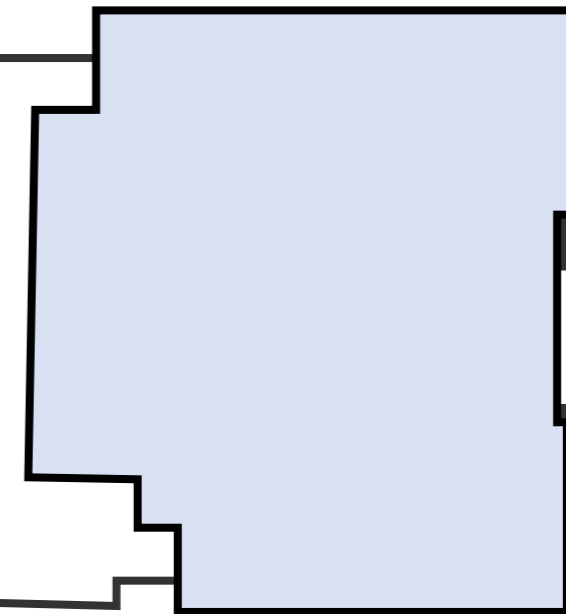
school (moving)



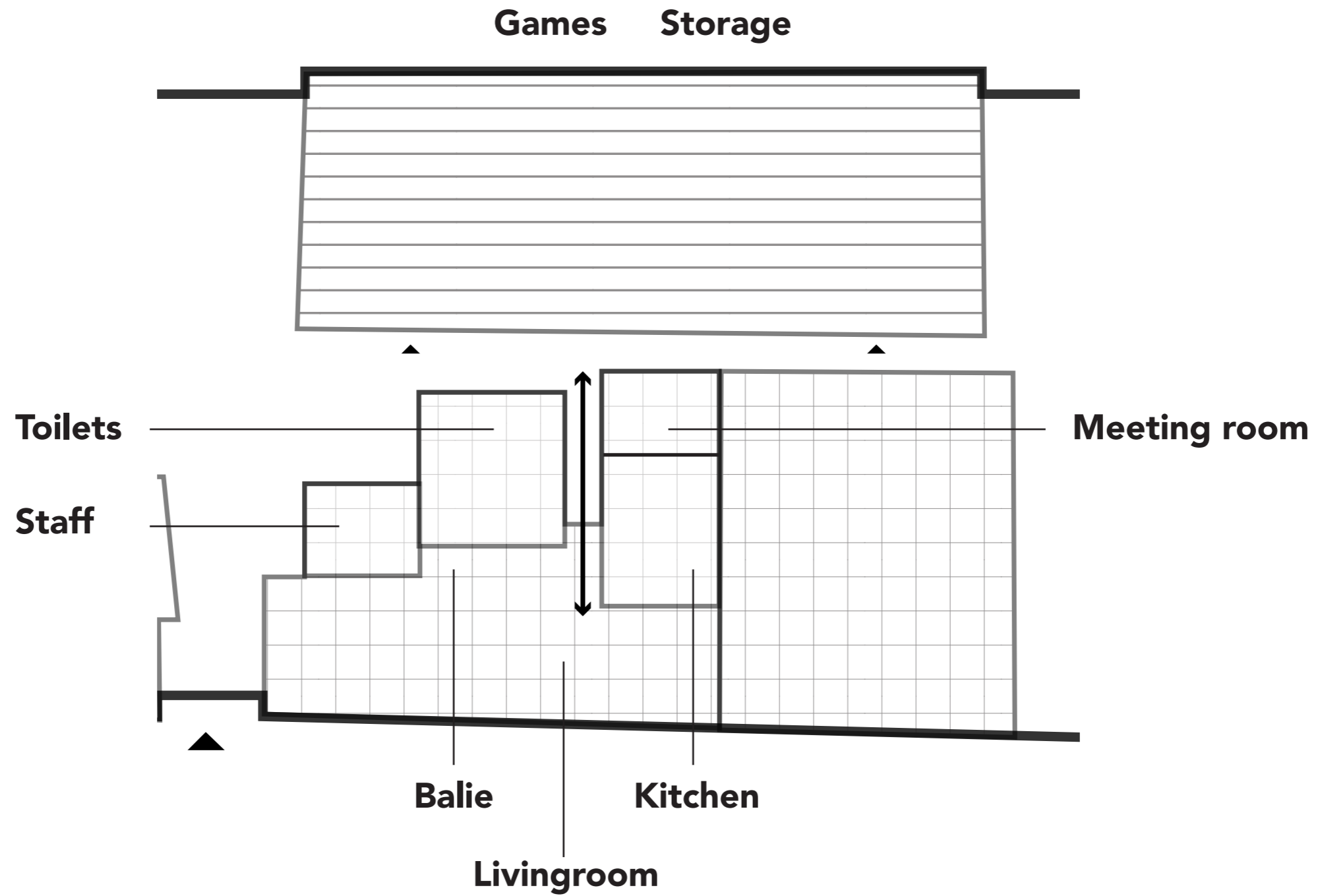
neighborhood
house



sports



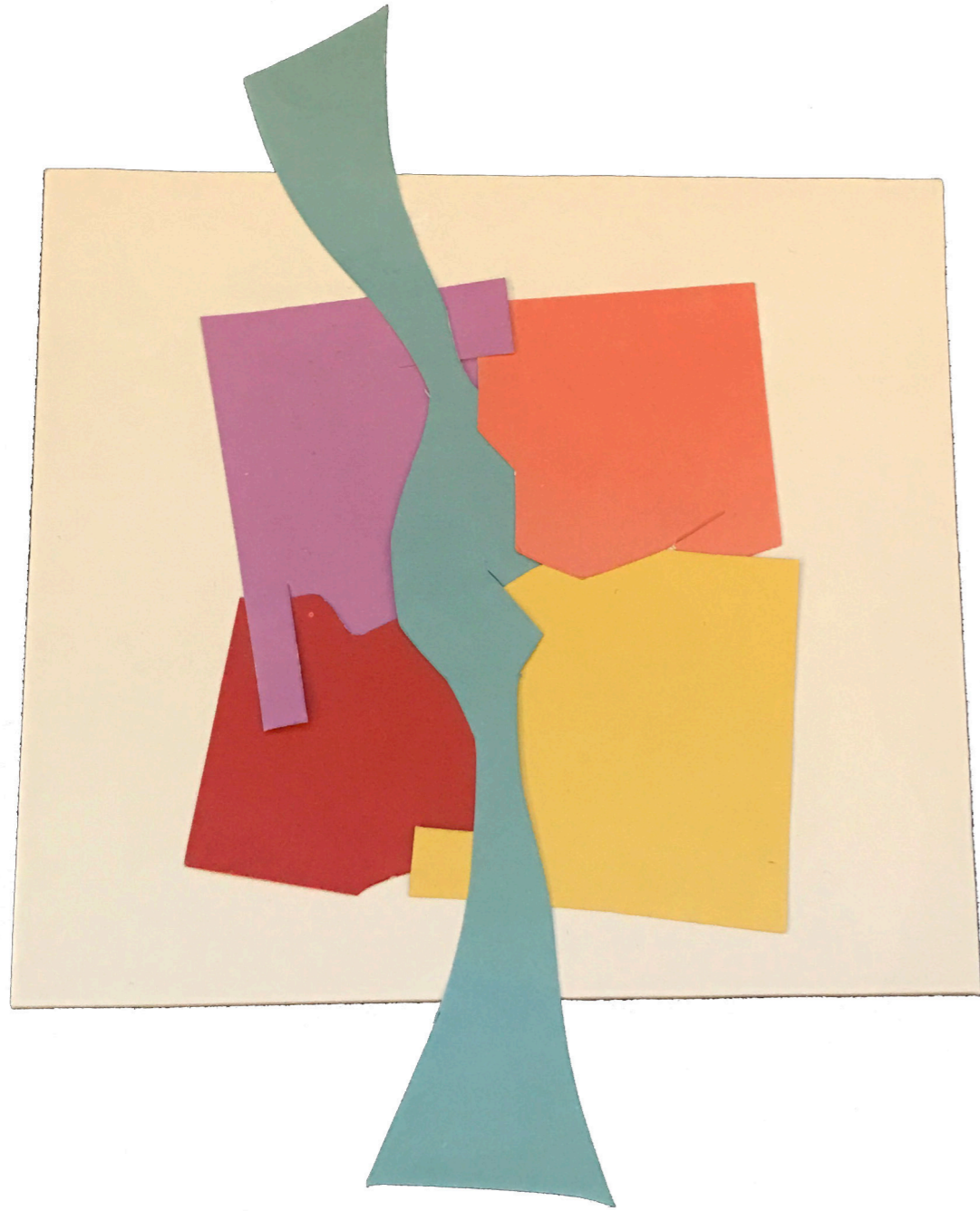
program neighborhood house



manifesto

1. The **neighborhood home** is **for** the **inhabitants** of the Oude Westen.
2. An **open, transparent and flexible** space will make room for the **needs of its users**.
3. Added to that the huis van de wijk **will free up its unused space** for other functions looking for a place to stay.
4. **New entrances** will be placed on the **square side** and on the **street side** to increase the **accessibility** of the space.
5. The **needs that are combined** are: coming together, being able to talk to someone in private or in a group, learning and educating younger people, playing, cooking and working together.
6. Using the old structure of the building the **functions will be rearranged**.
7. To increase visibility and to also affect the **square side** of the building **public** and **collective functions** will be located on that side.
8. The **facade** on this side will be **opened up** and the entrance will be centered in relation to the space.
9. The rooms along the **street side** will inhabit functions for **education** as they need **silence** and need to be closed off sometimes.
10. The space surrounding the functions **merges the program** together.
11. **Furniture with emotional value** will be replaced in the new design.

concept models



program new

now

Balie
Living room
Staff
Kitchen
Toilets
Storage
Meeting room
Games

future

Greenhouse
Kids Library
Workspaces
Lab

program new

organisation

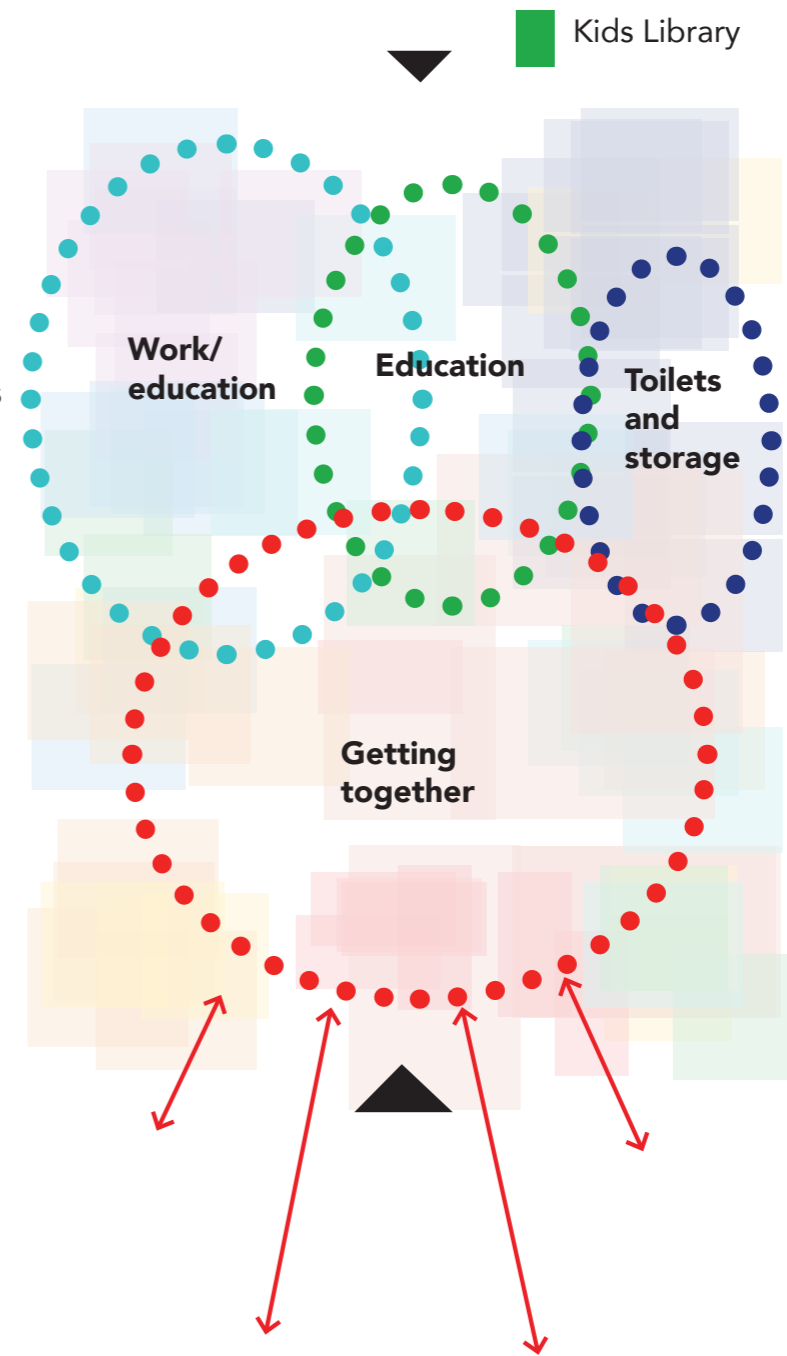
street



- Balie
- Living room
- Kitchen
- Games
- Kids Library
- Staff
- Lab
- Toilets and storage
- Workspaces

square

street



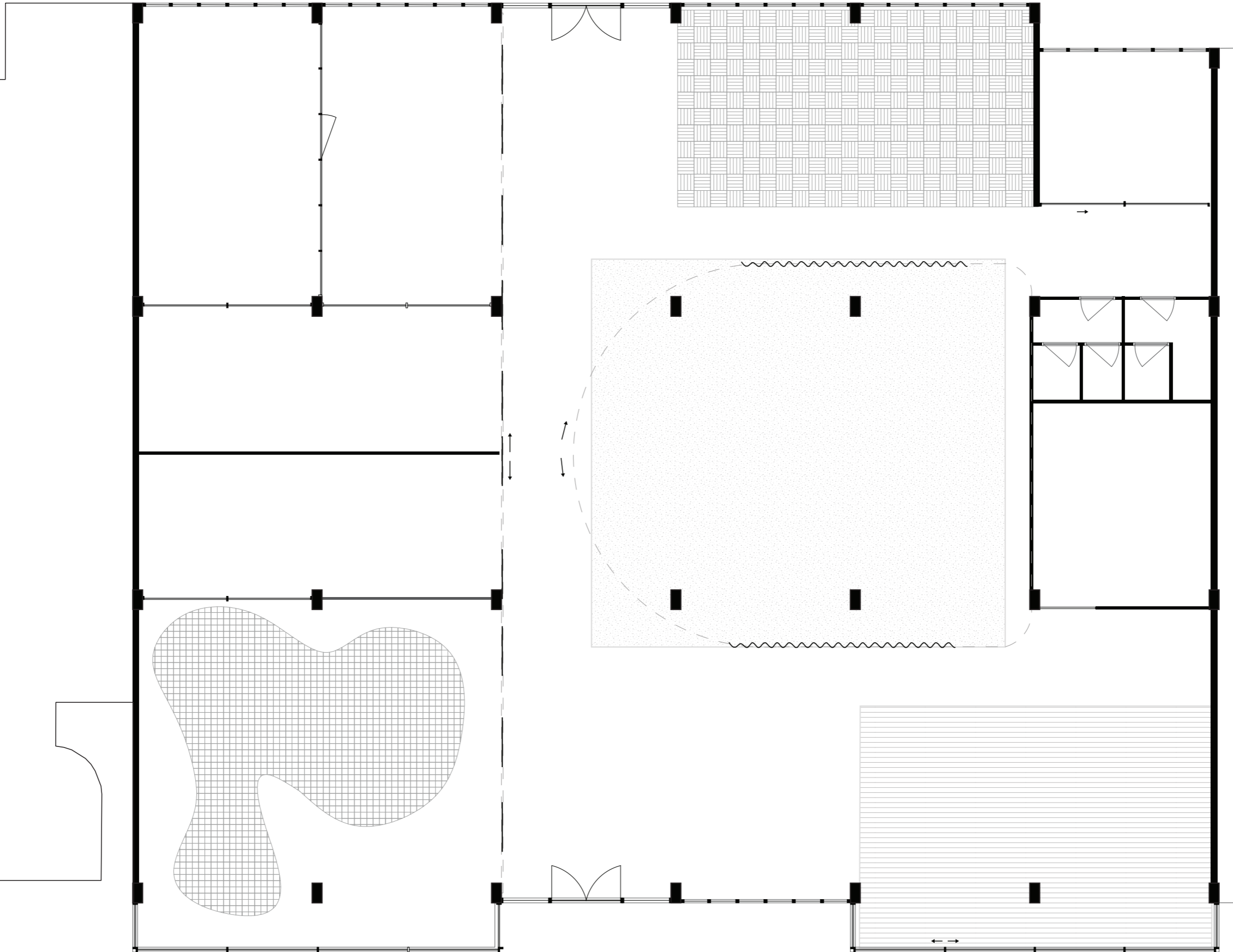
square

- Workspaces
- Lab
- Staff

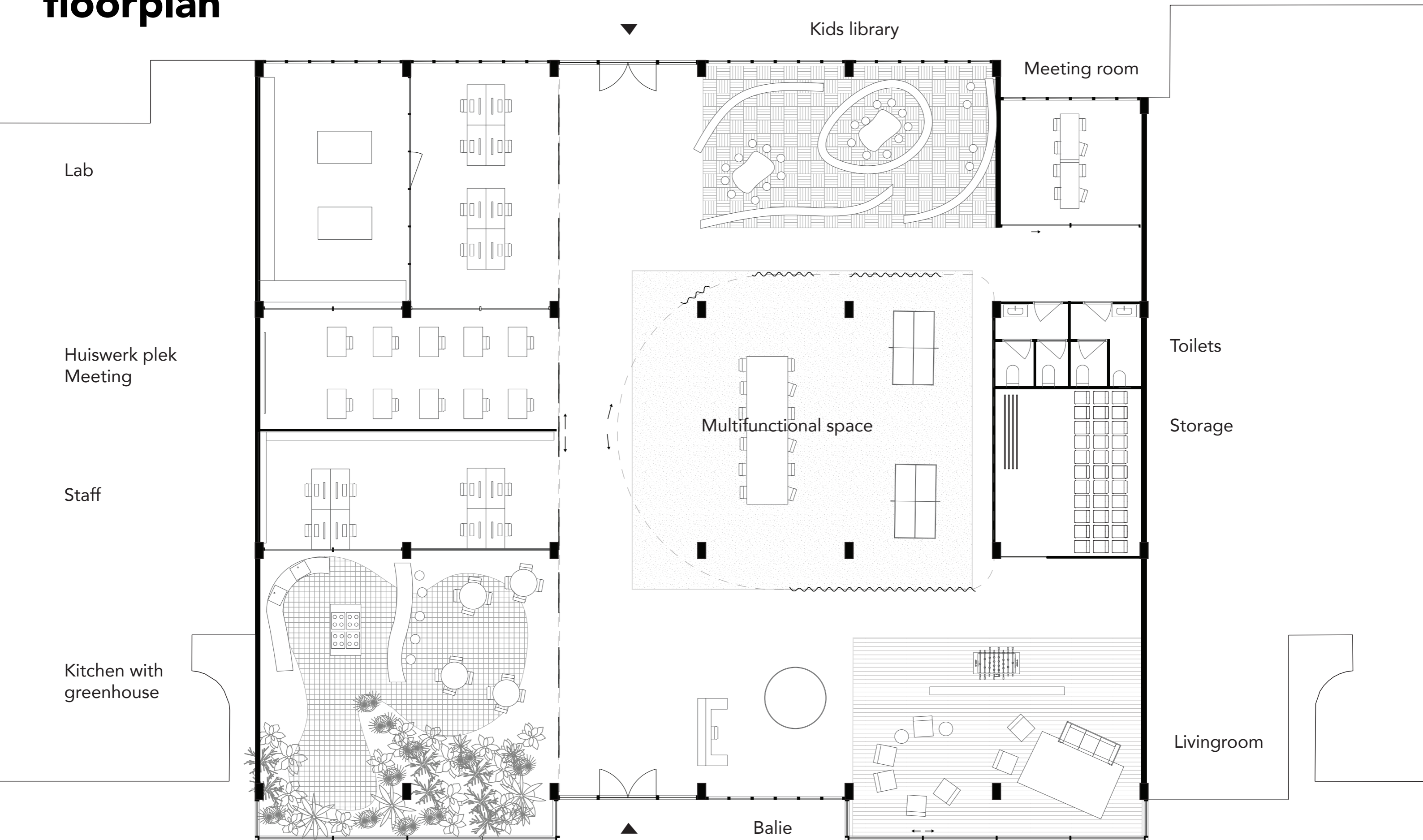
Toilets and storage

- Games
- Living room
- Kitchen
- Balie

floorplan

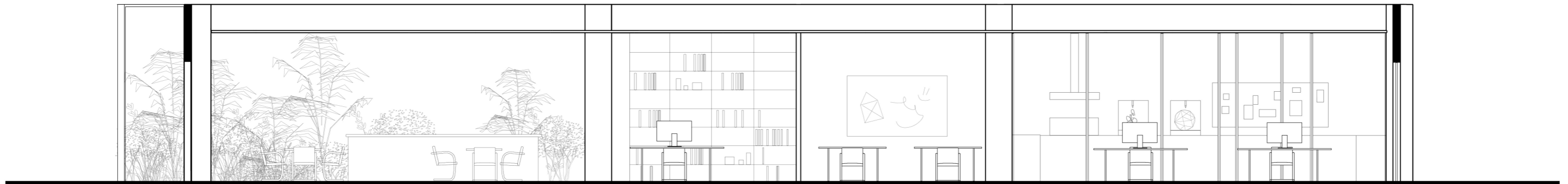
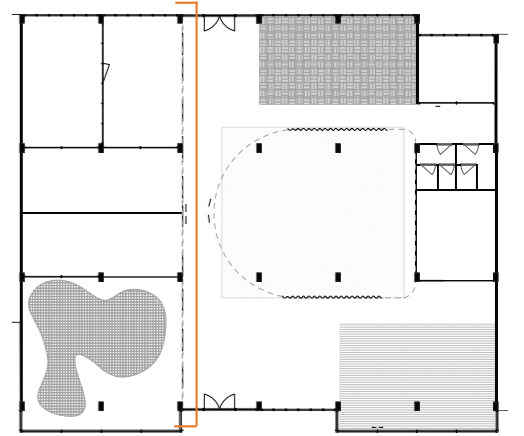


floorplan



flexibility

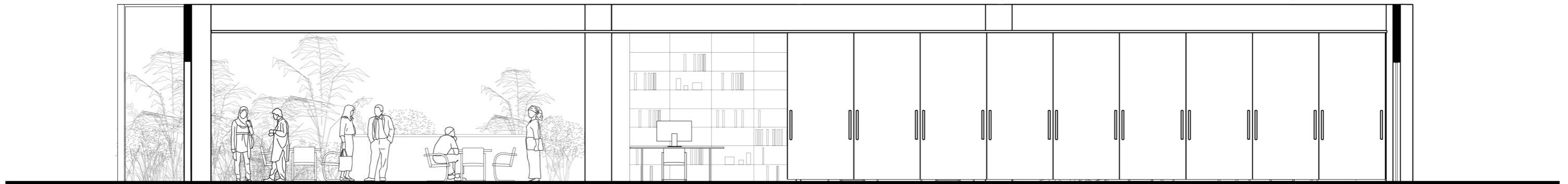
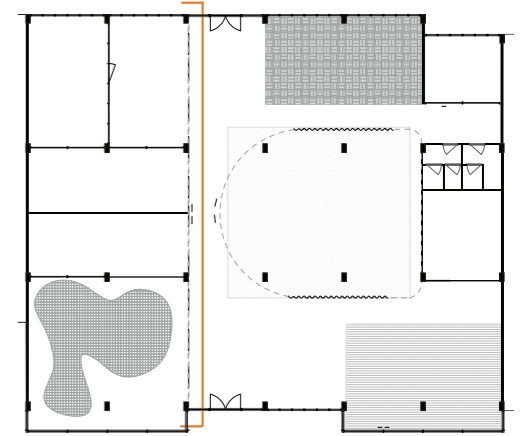
kitchen, staff, lab and homework room



open

flexibility

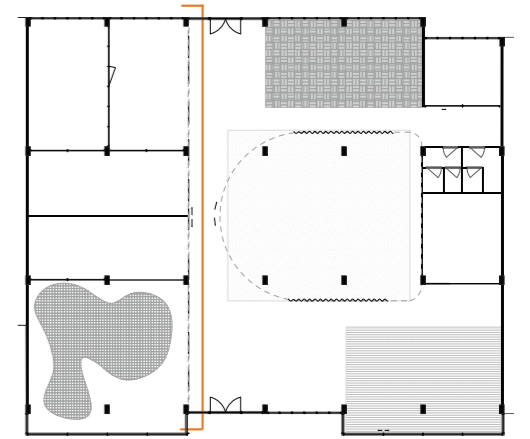
kitchen, staff, lab and homework room



coffee in the kitchen

flexibility

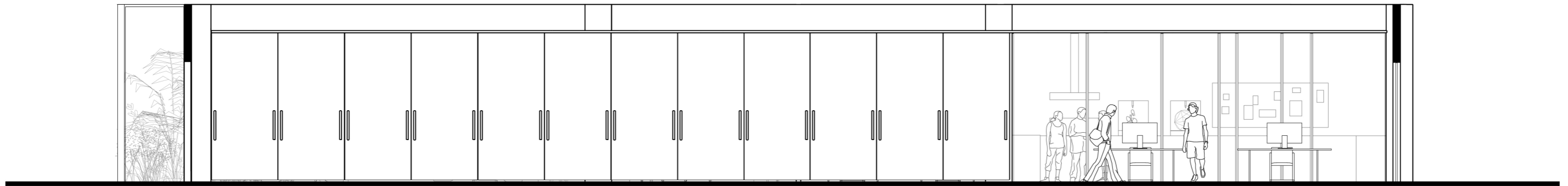
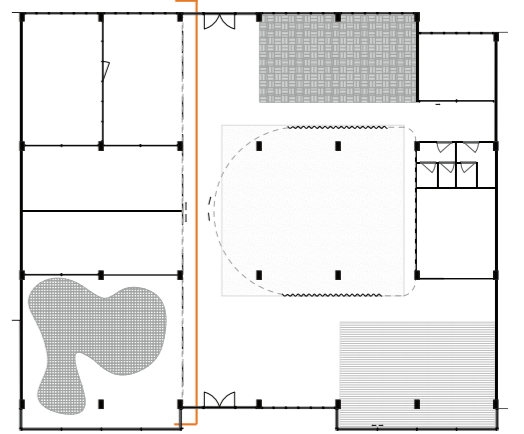
kitchen, staff, lab and homework room



break time

flexibility

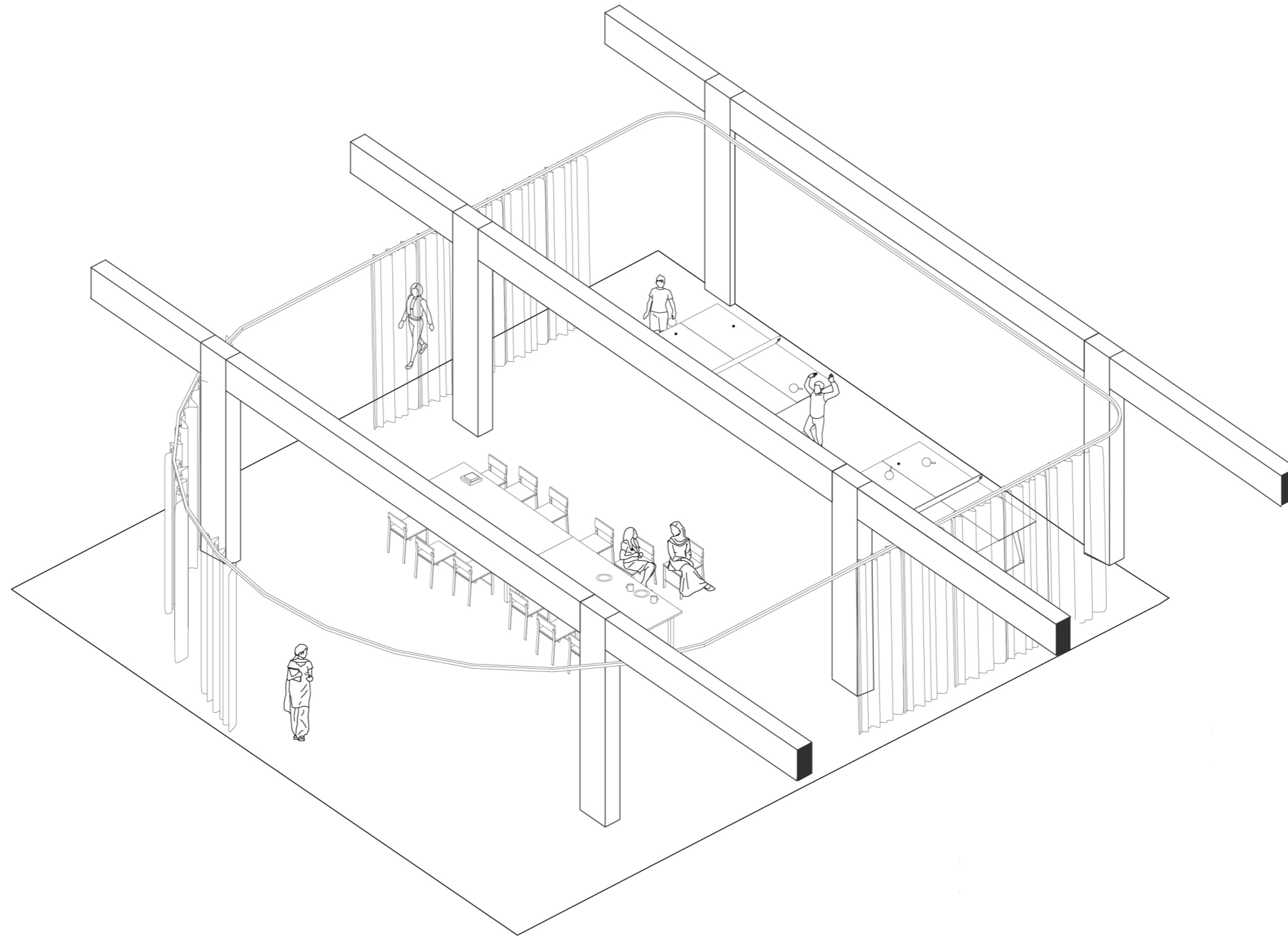
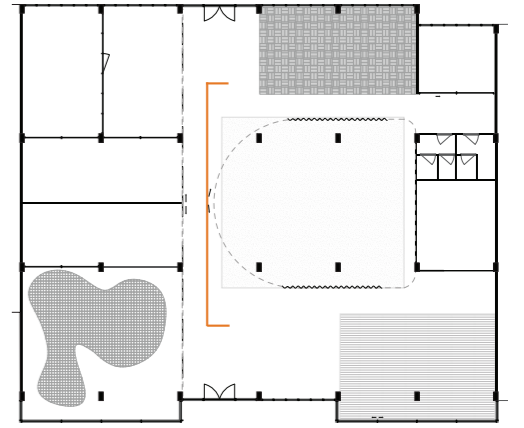
kitchen, staff, lab and homework room



late hours in the lab

flexibility

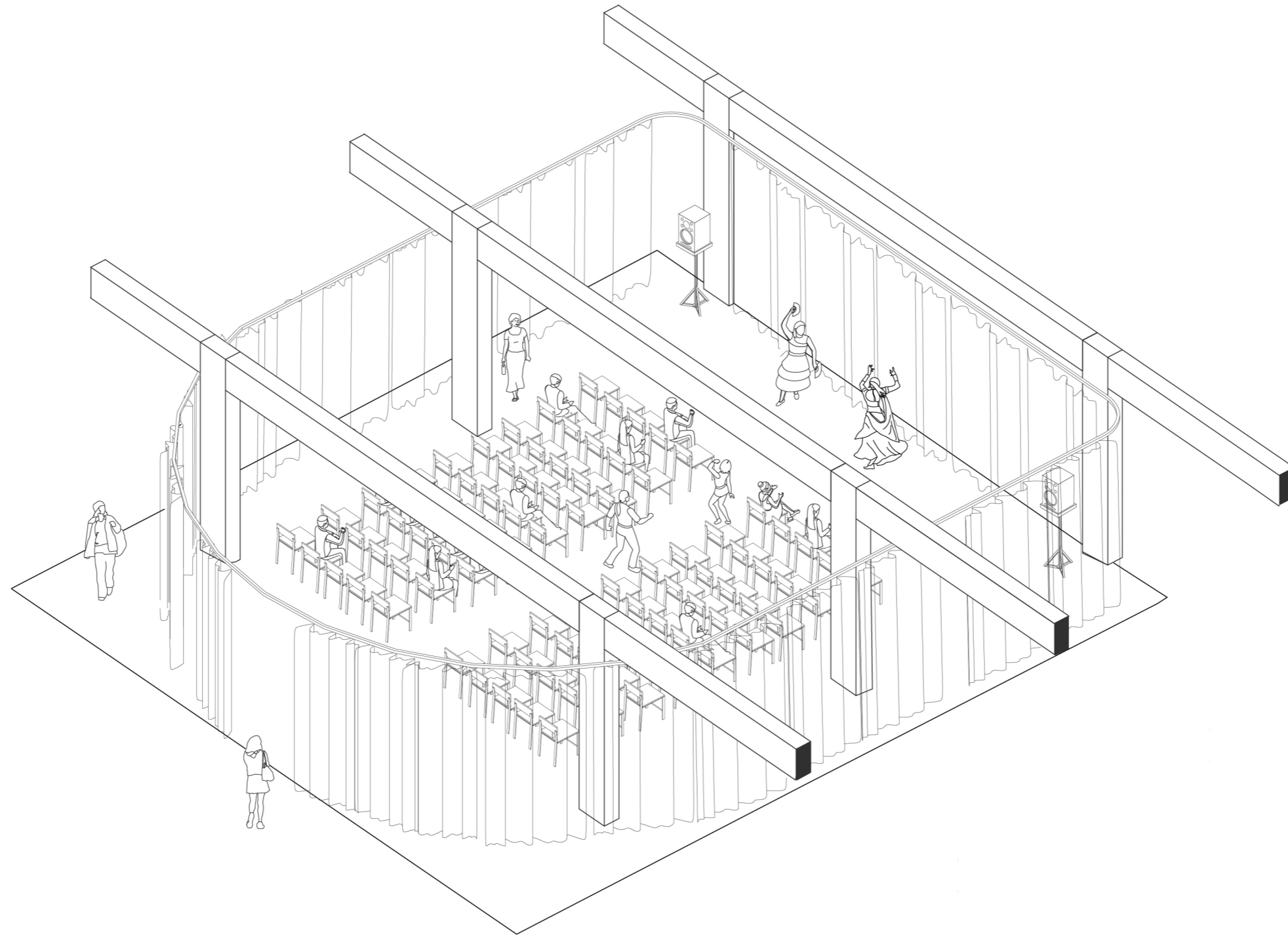
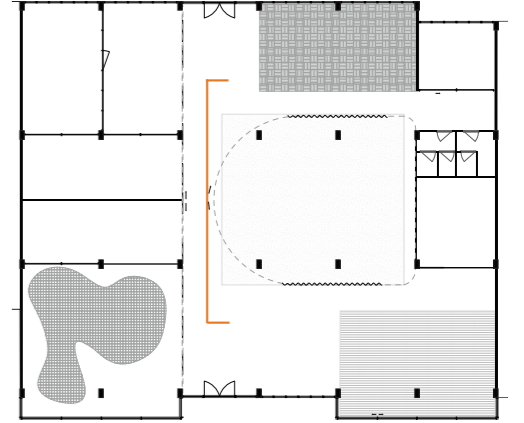
multifunctional space



the usual

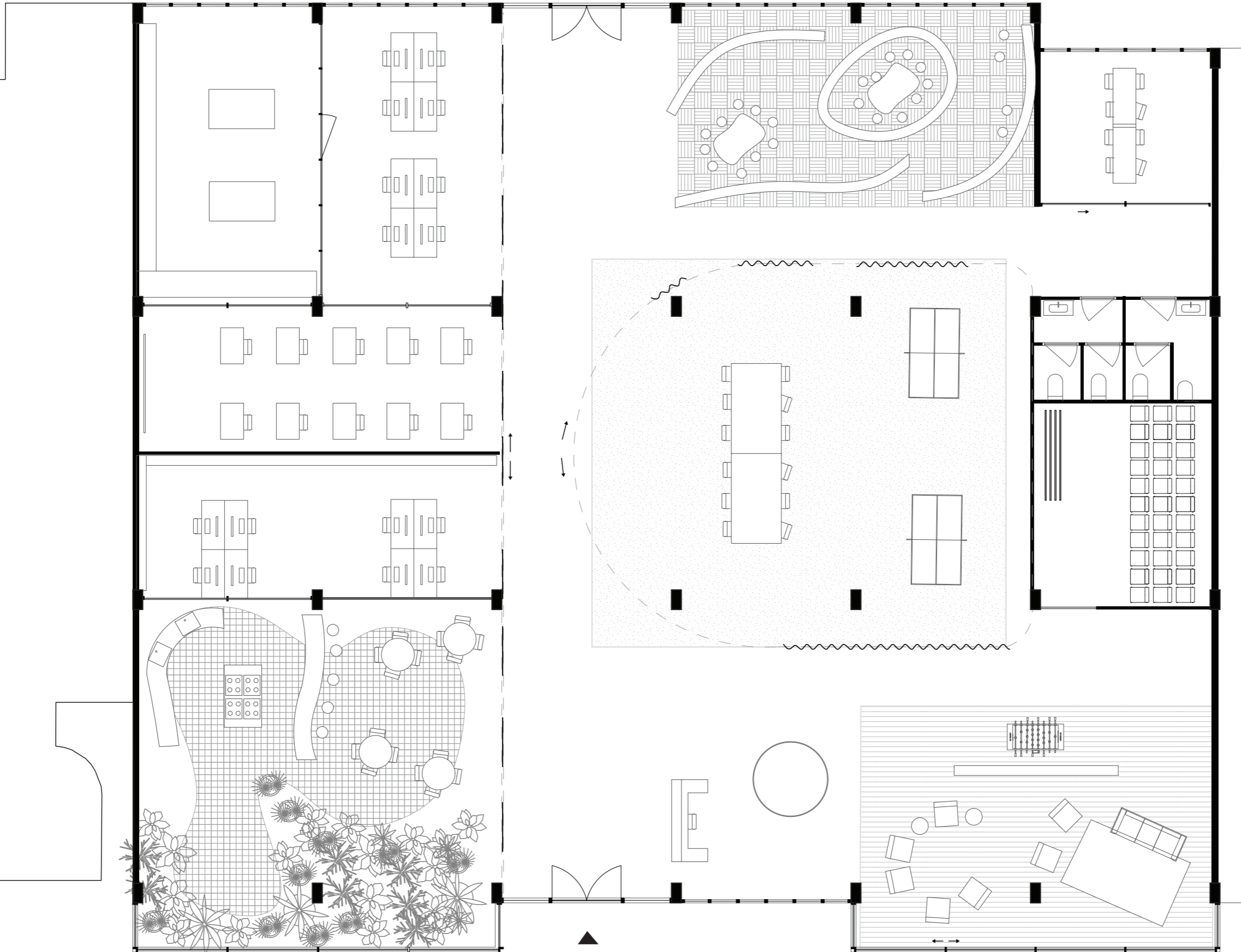
flexibility

multifunctional space



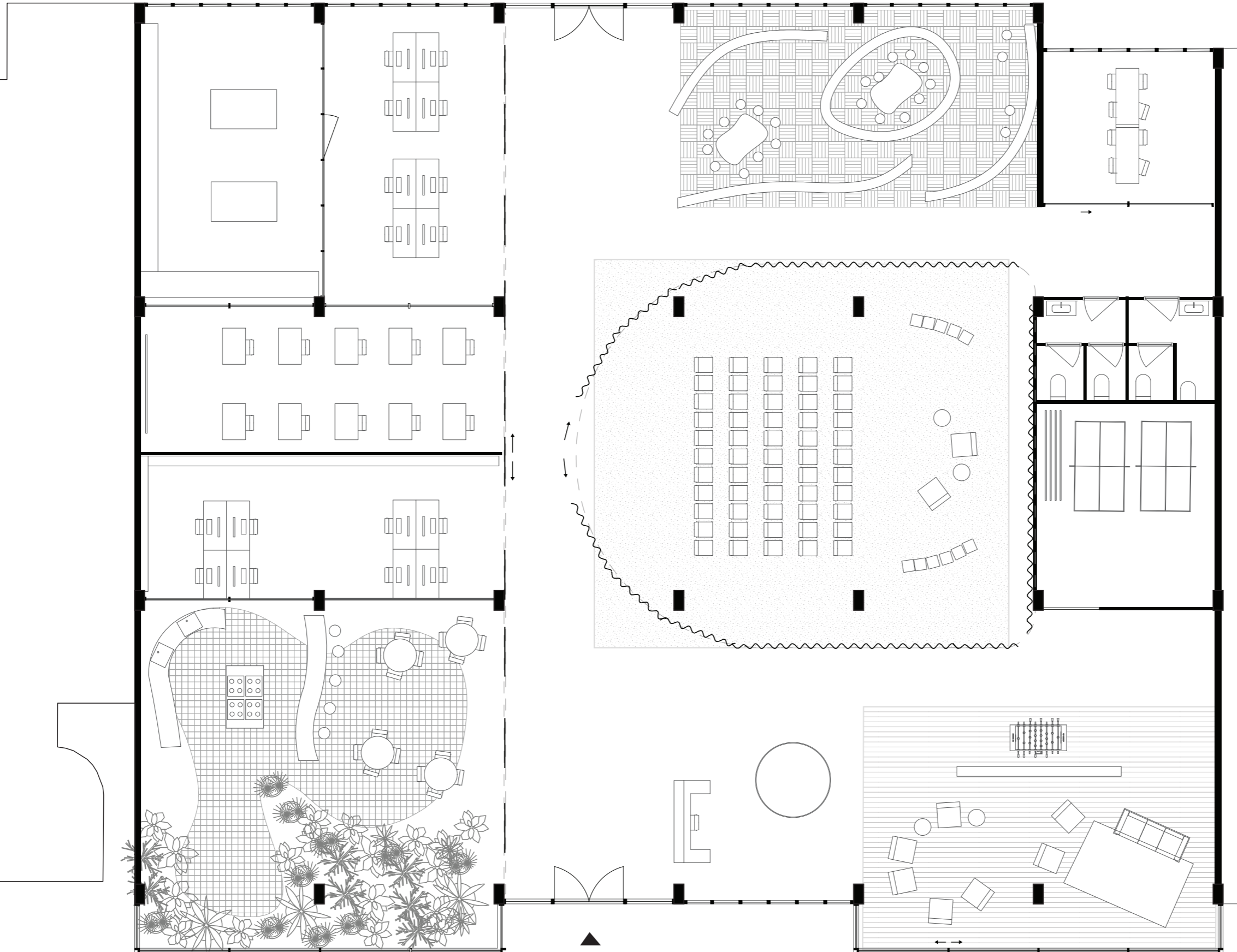
dance performance

scenarios



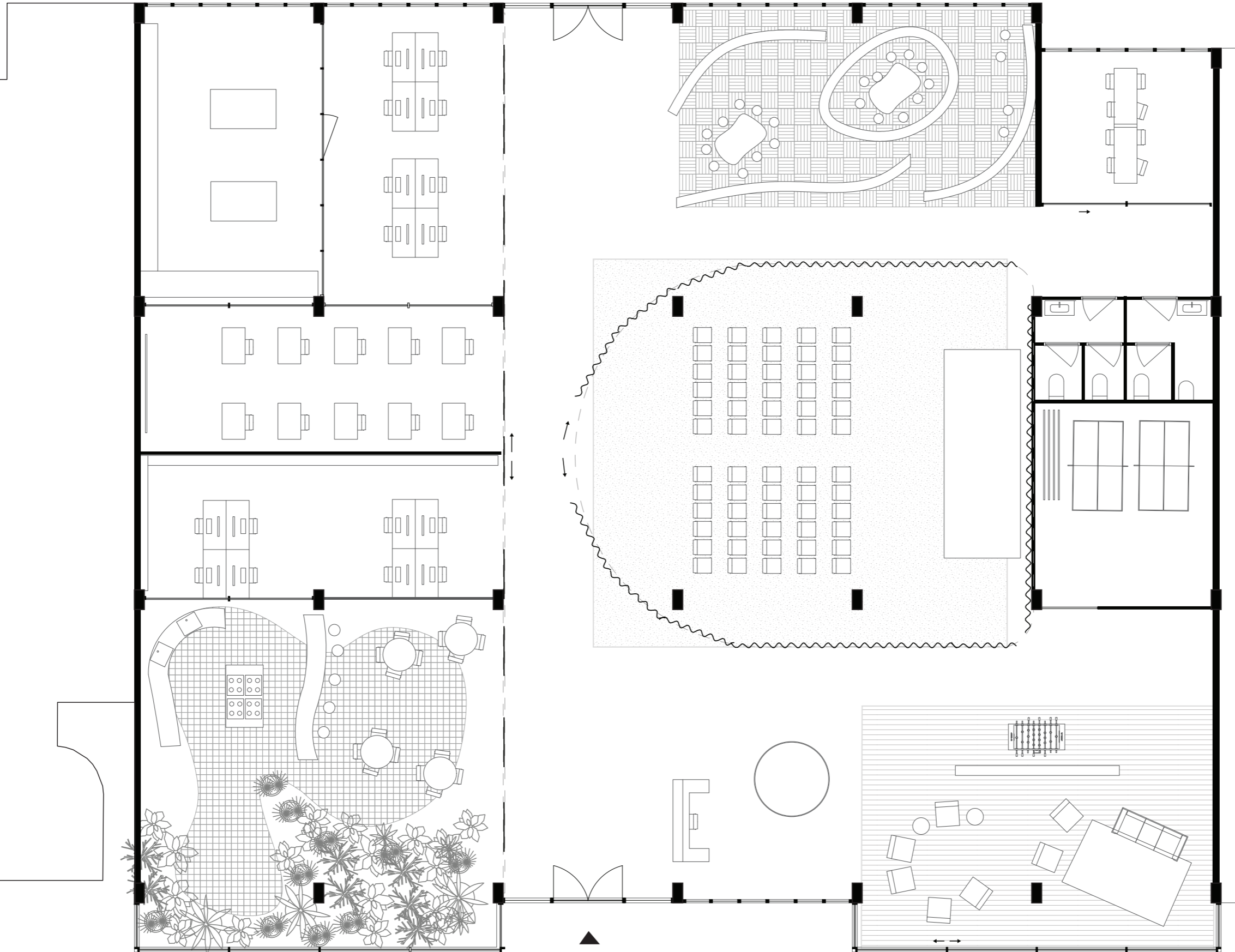
the usual

scenarios



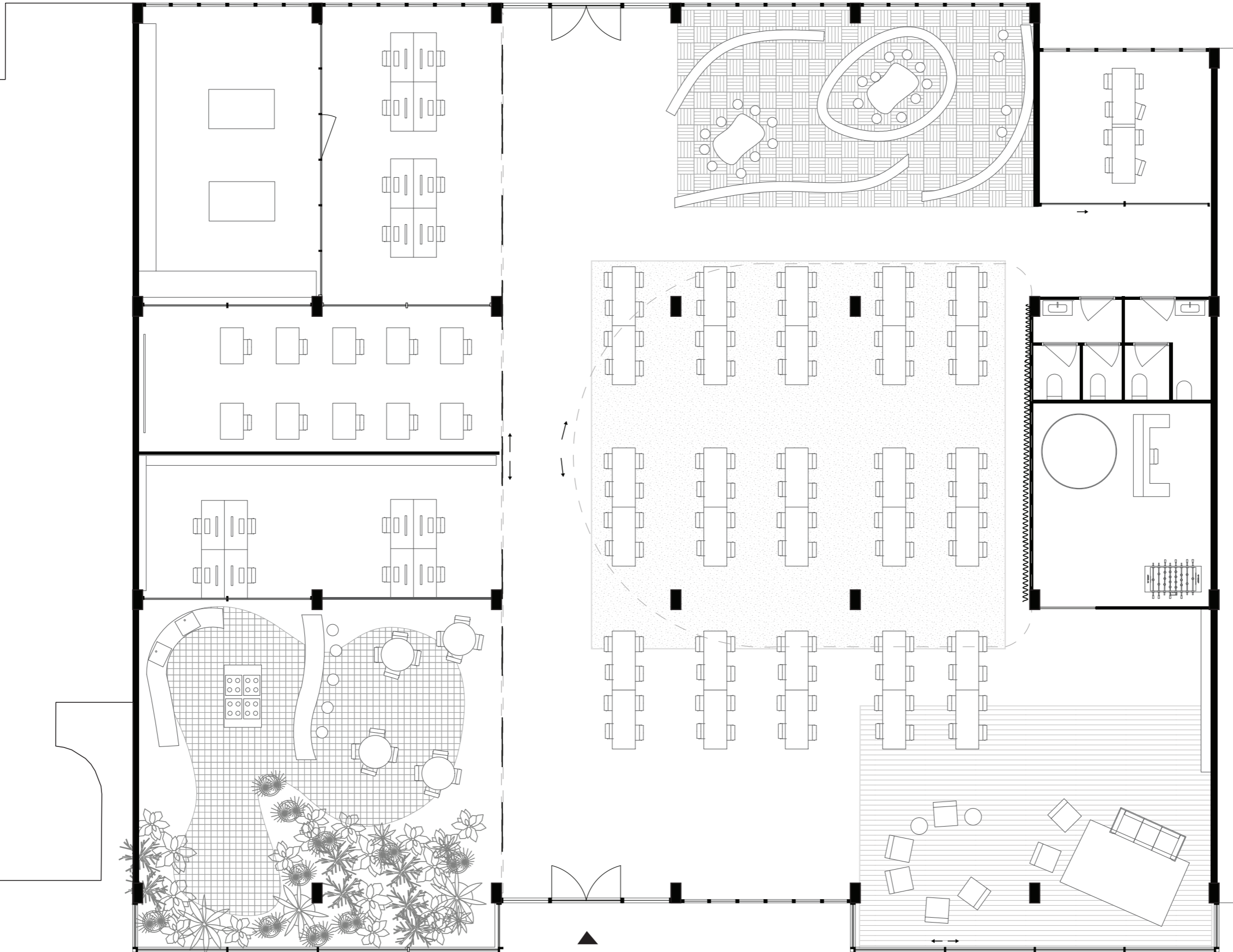
lectures

scenarios



performance or movie night

scenarios



neighborhood dinners

materials

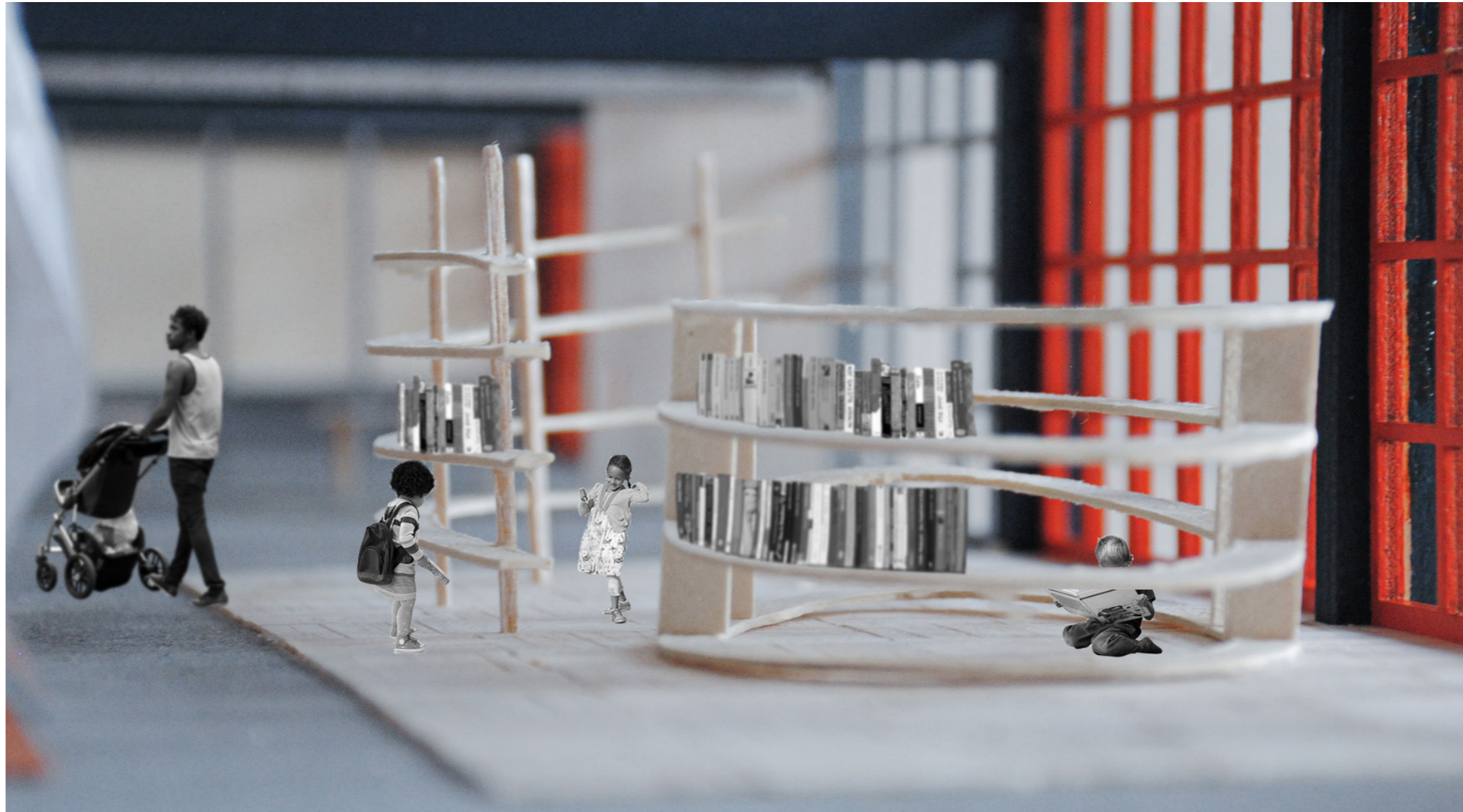
floor



garden kitchen



kids library



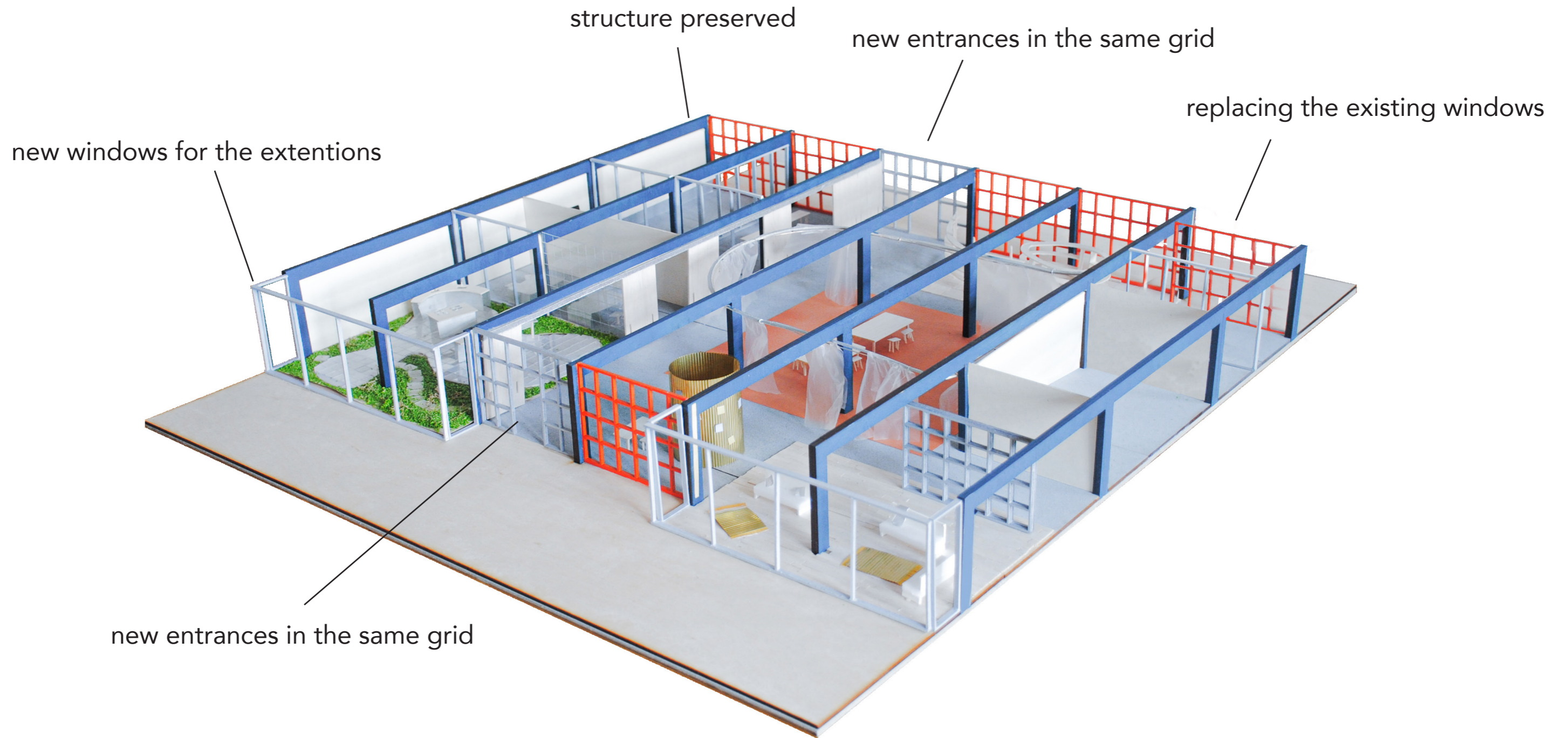
living room



view from the living room



facades



relation with its context



elevation



Thanks!

