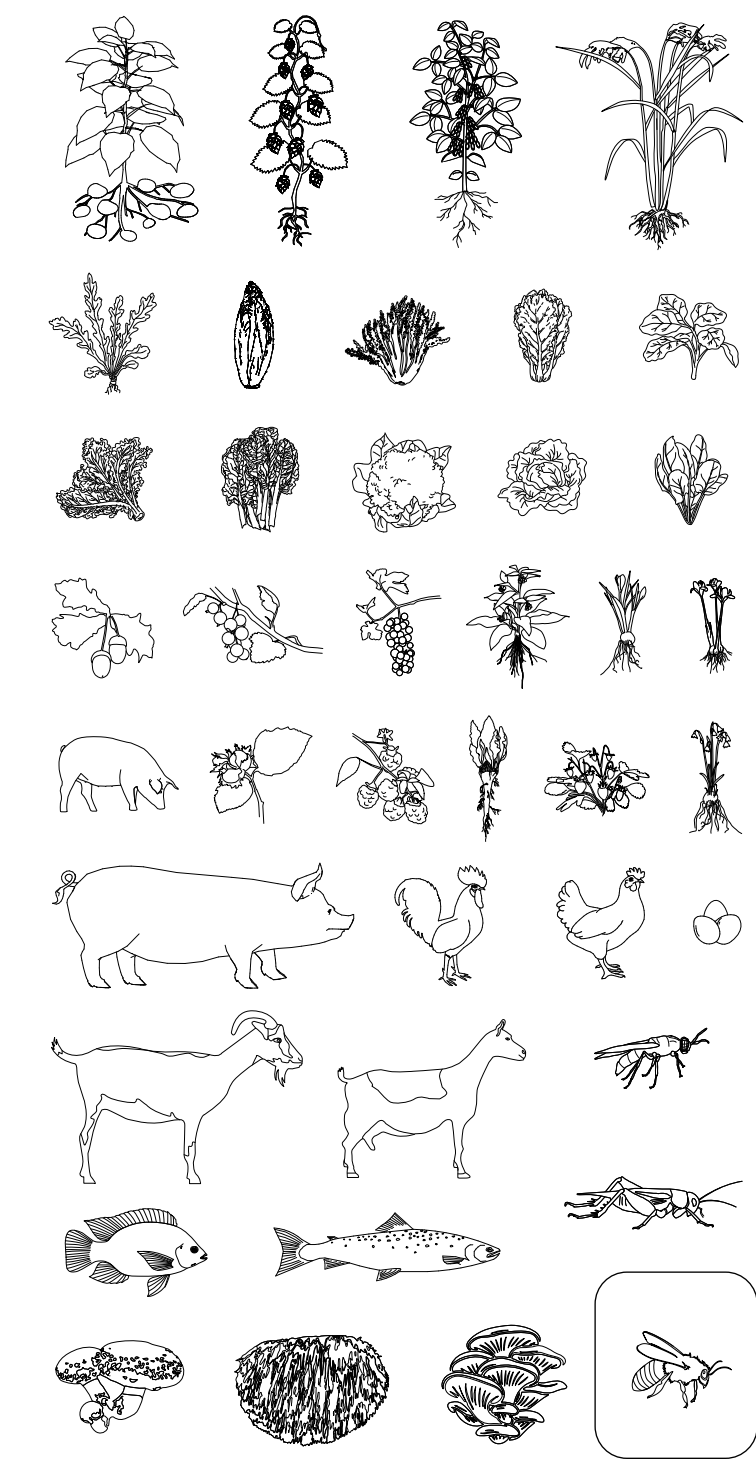


LIQUID GOLD N°15

BRADLEY HOEDEMAN



Welcome to the Bee-world of Liquid Gold No 15. This 400m³ ecosystem is the homestead of 20 honeybee colonies which are the home of 120.000 honeybees. In our greenhouse, you can go on a 3D journey through the vertical farms, see the bees get to work and experience the process of (raw) honey production. The bees are housed in two types of bee-hives; two traditional Spaarkast hives, where honey is harvested in the classic way, and 18 Australian Flow Hives. The Flow Hives are innovative honey producing machines. You put a jar underneath the hive and the honey will flow out!

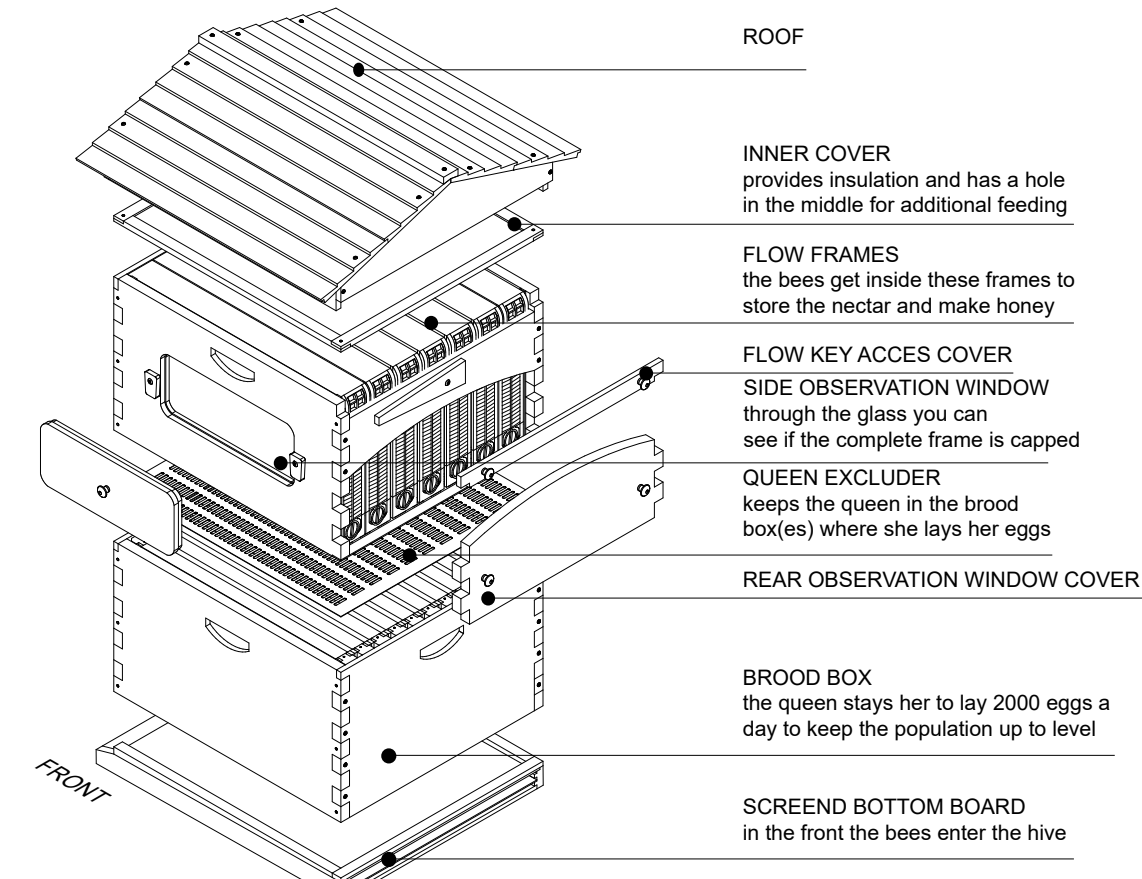
During winter, the bees have access to 2400m² of eatable plants and flowers which grow in our 25-meter-tall greenhouse. When summer arrives, the greenhouse windows will open, and the bees can fly outside. Scattered throughout the city, there are nine other locations with 20 beehives each.

With a honey production of approximately 4500 kilograms of honey per year, Liquid Gold is the largest honey producing industry in the Netherlands. Additionally, we offer a diverse assortment of more than 11.000 greeneries of sage, strawberries and indian cress per year. All our products will be available for private and business sales.

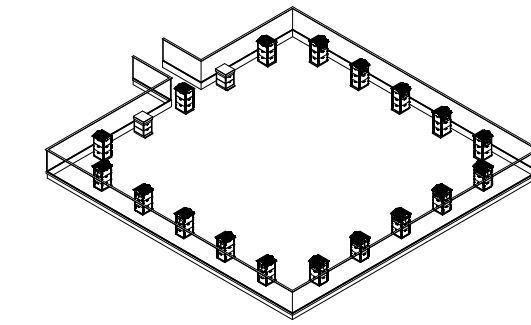
MENU



HONEY BEE

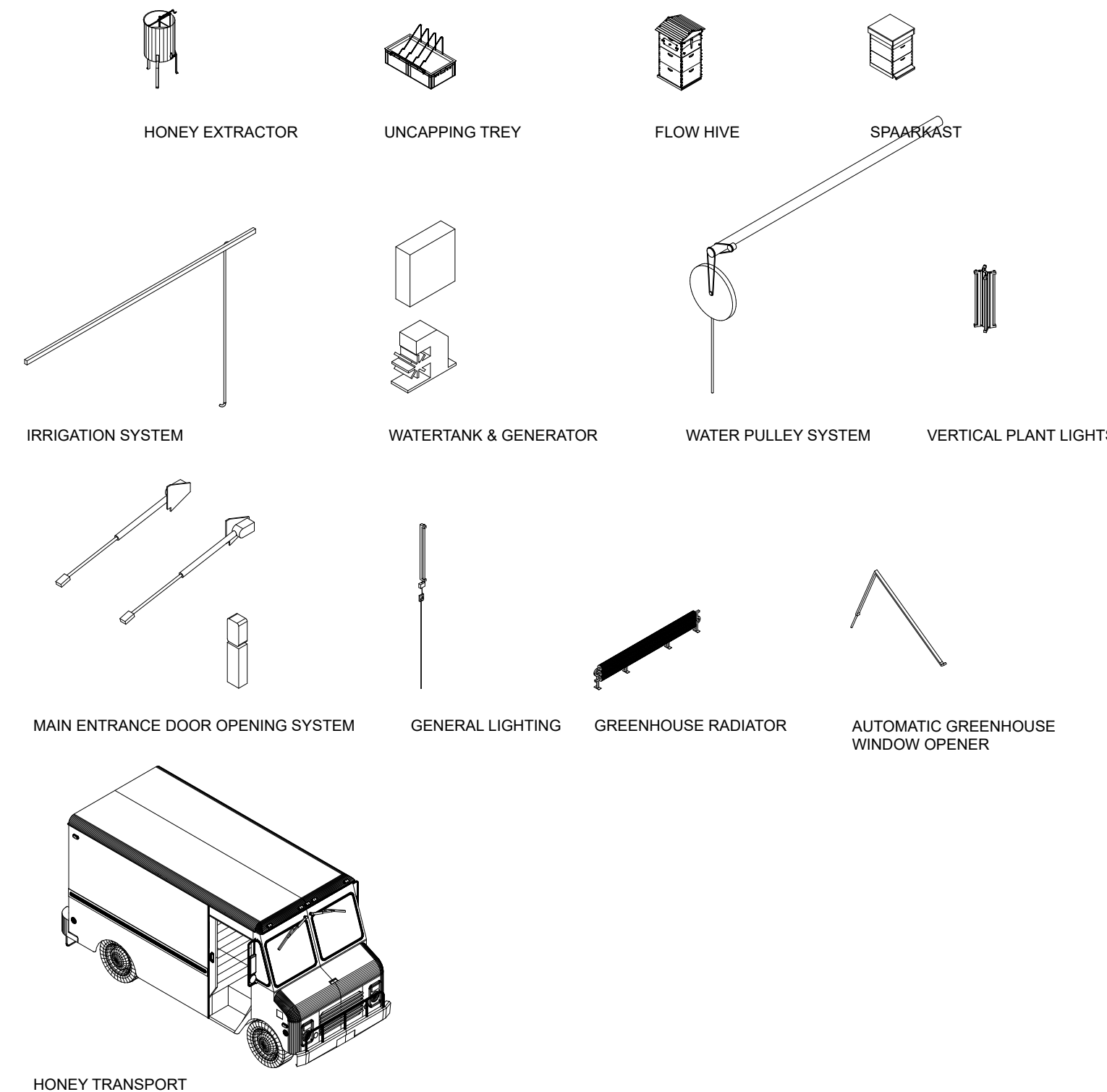


BEEHIVE PER COLONY

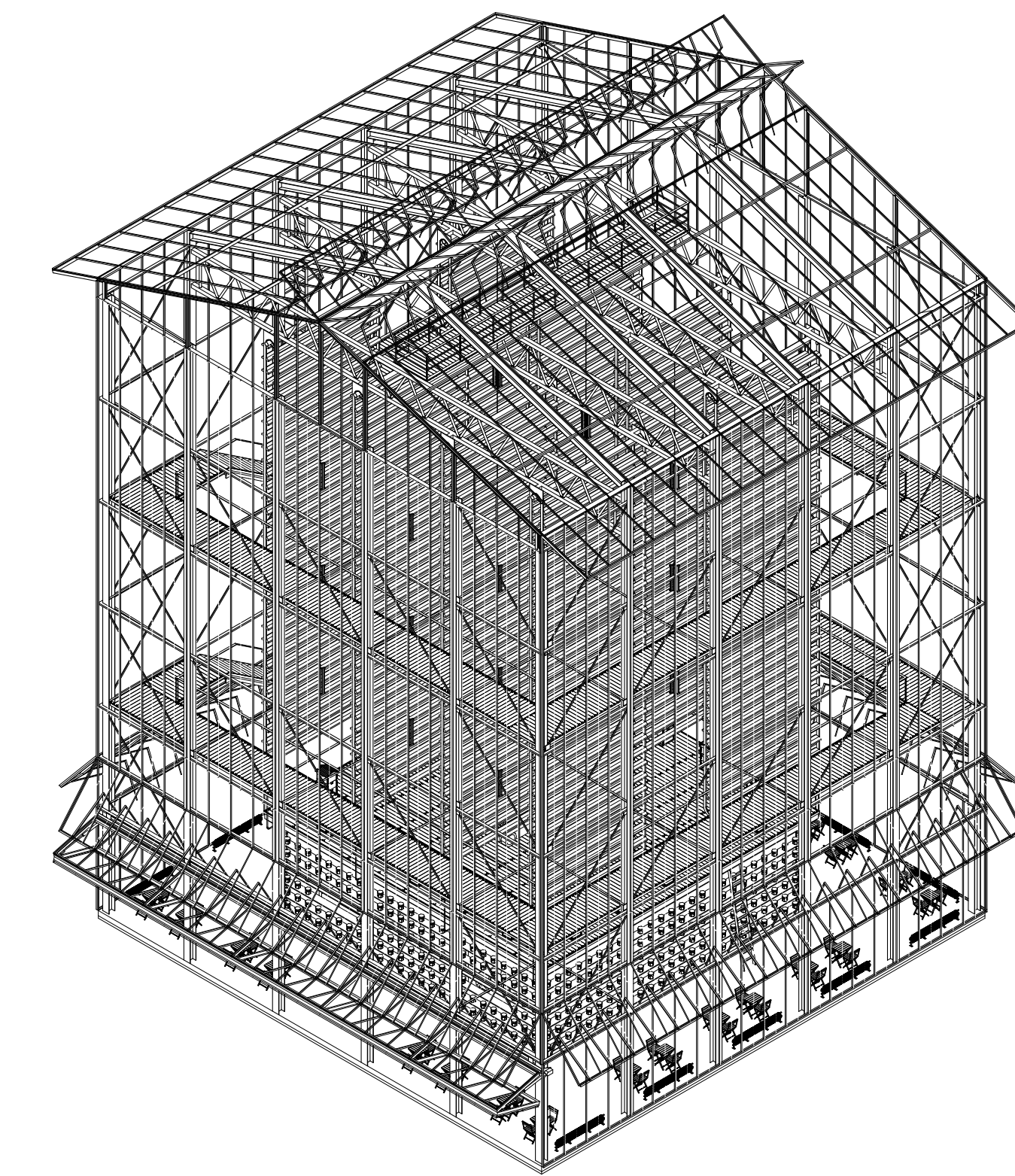


AREA PER 20 BEEHIVES

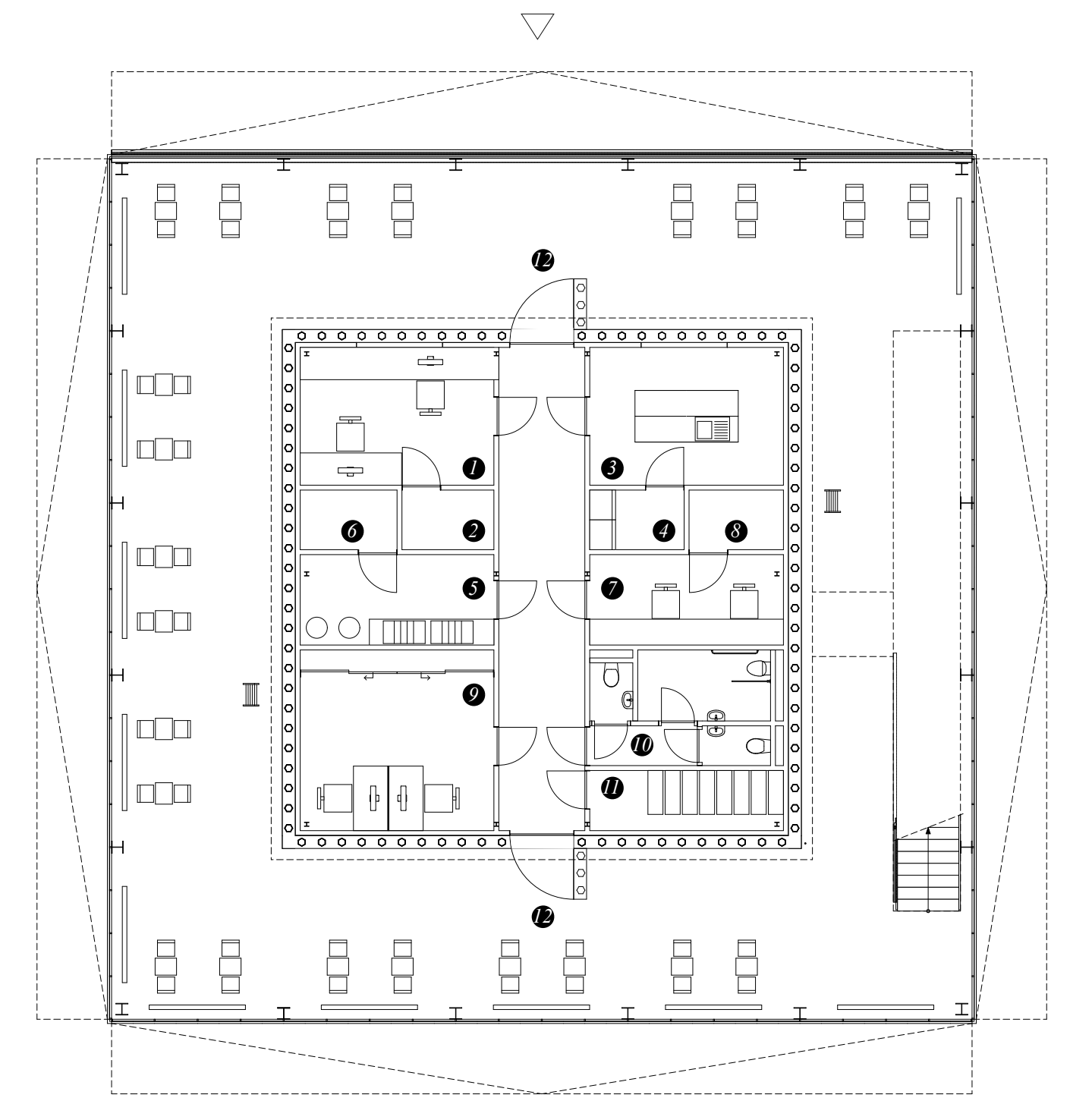
PRODUCTION FLOOR



TECHNOLOGY

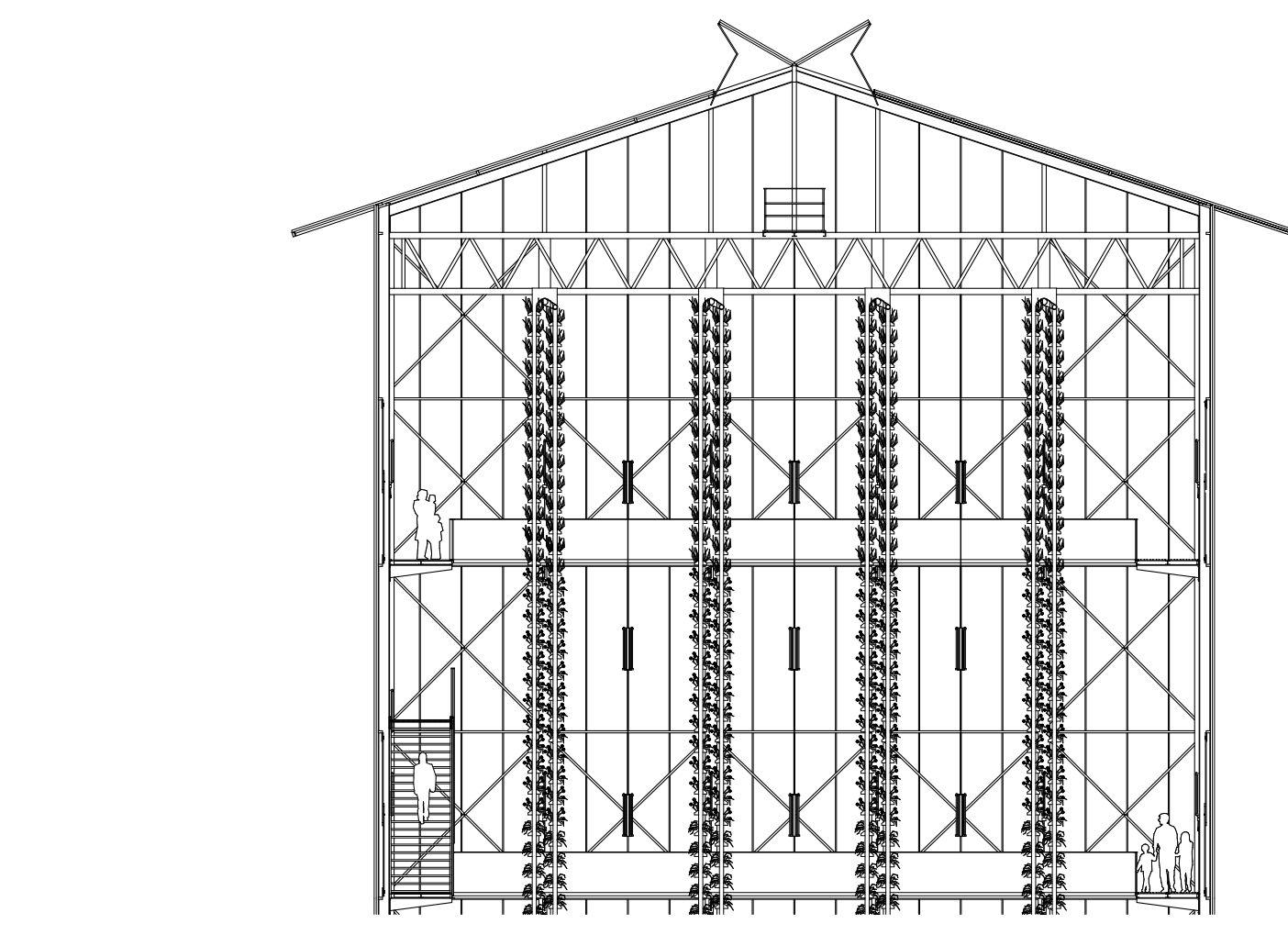


ARCHITECTURE

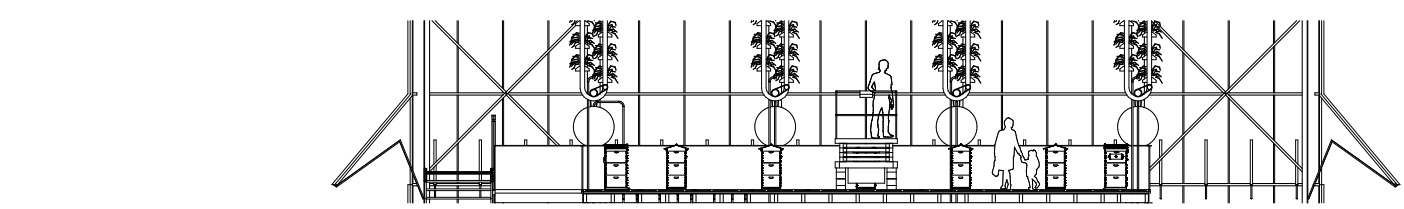


- 1 FRONT DESK & INFORMATION
- 2 STORAGE
- 3 KITCHEN LUNCHROOM
- 4 KITCHEN STORAGE
- 5 HONEYROOM
- 6 BEEKEEPER STORAGE
- 7 FLOWER WORKSHOP
- 8 FLOWER STORAGE
- 9 OFFICE
- 10 TOILETS
- 11 INSTALLATION ROOM
- 12 SHOP / LUNCHROOM / CORRIDOR

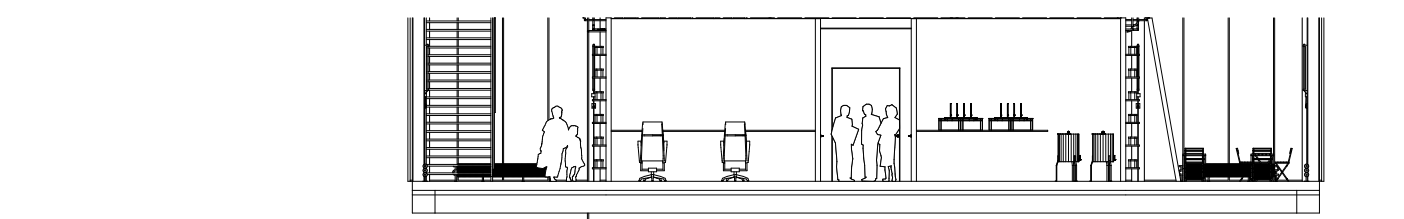
FLOOR PLAN 00



VERTICAL FARM & EDUCATIONAL ROUTE

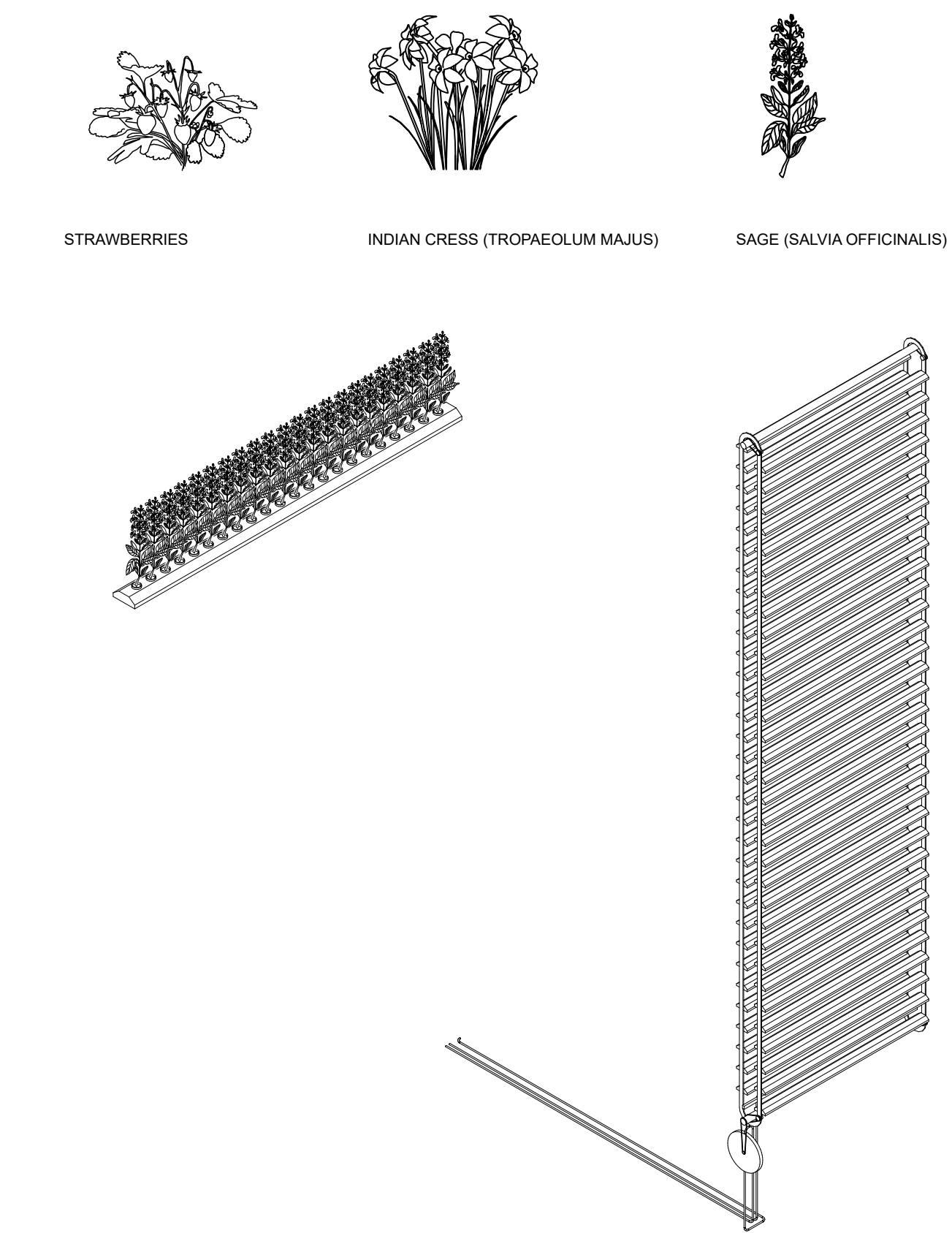


BEEHIVE DECK & HARVESTING



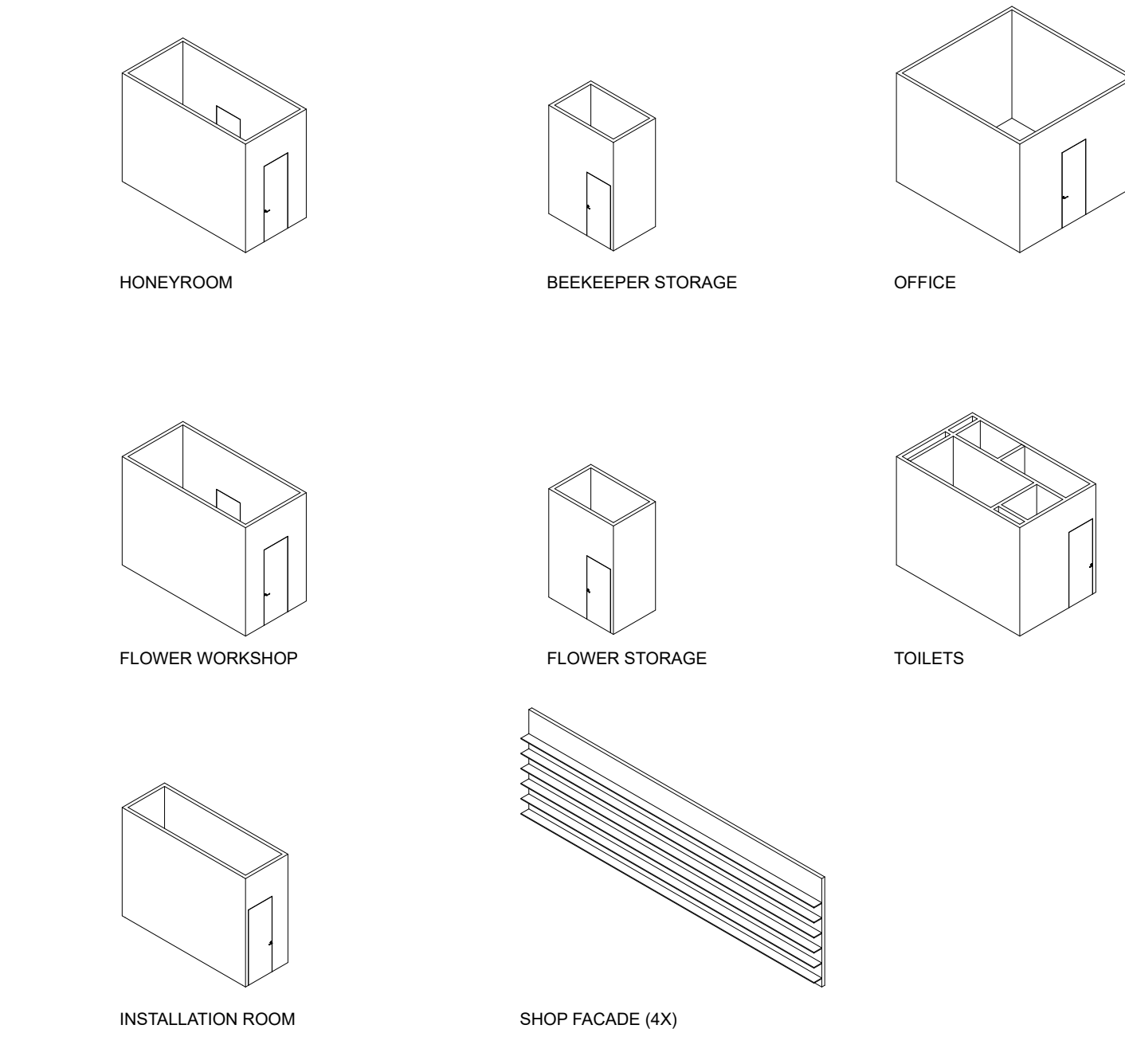
FACILITIES & SHOP

CONCEPT

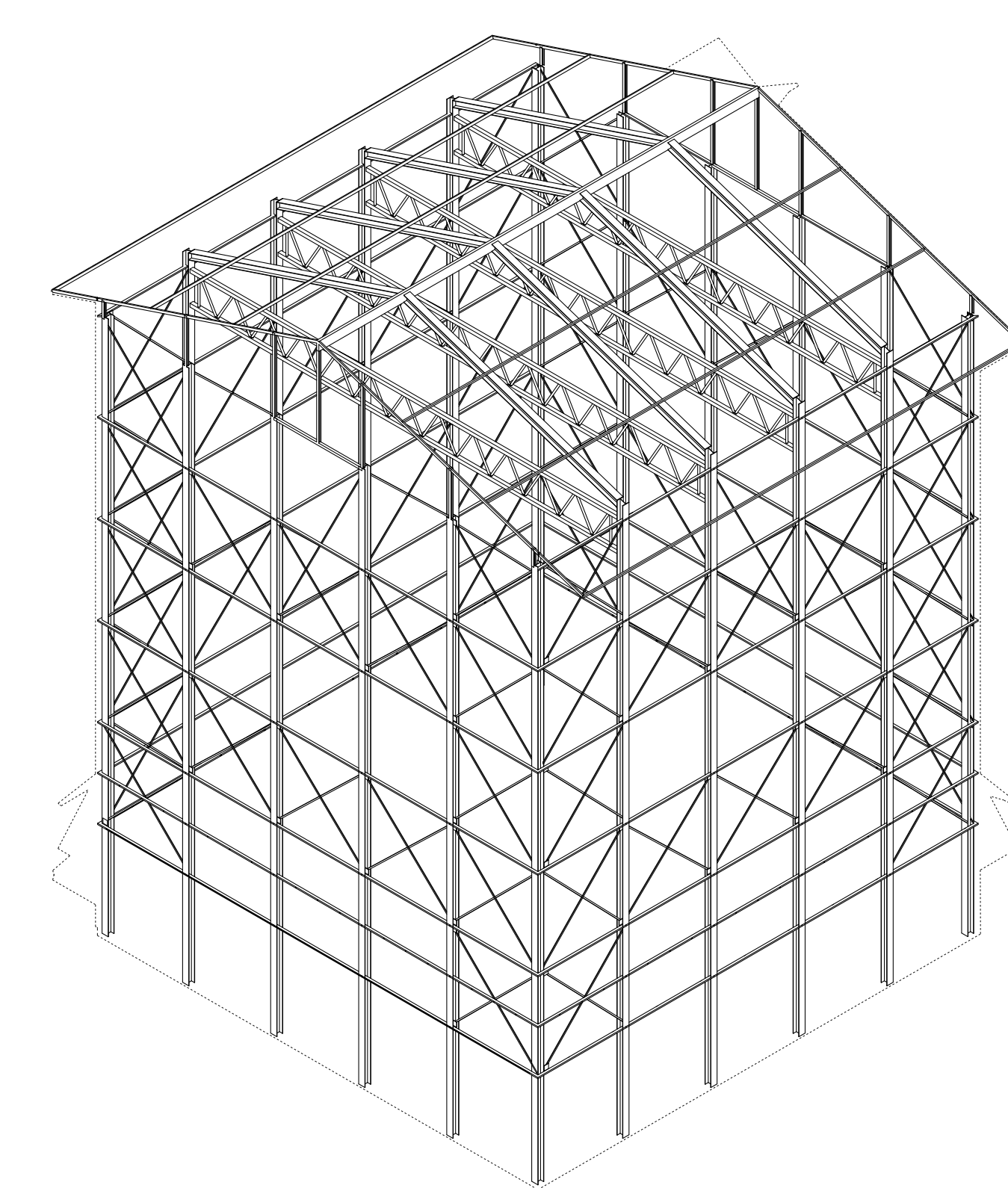


EATABLE PLANTS PRODUCTION

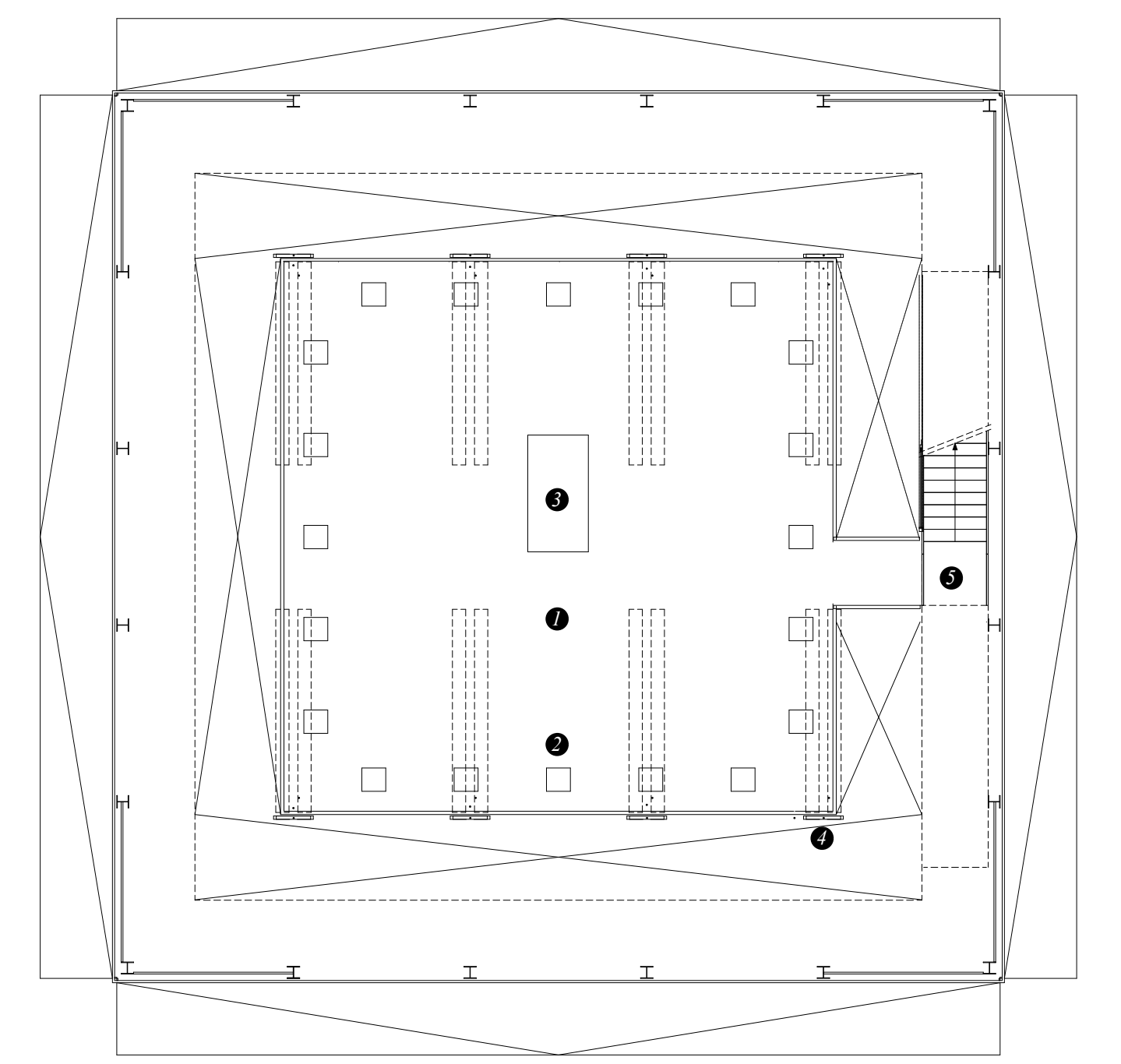
PRODUCT SYNERGY



PROCESSING & PACKAGING

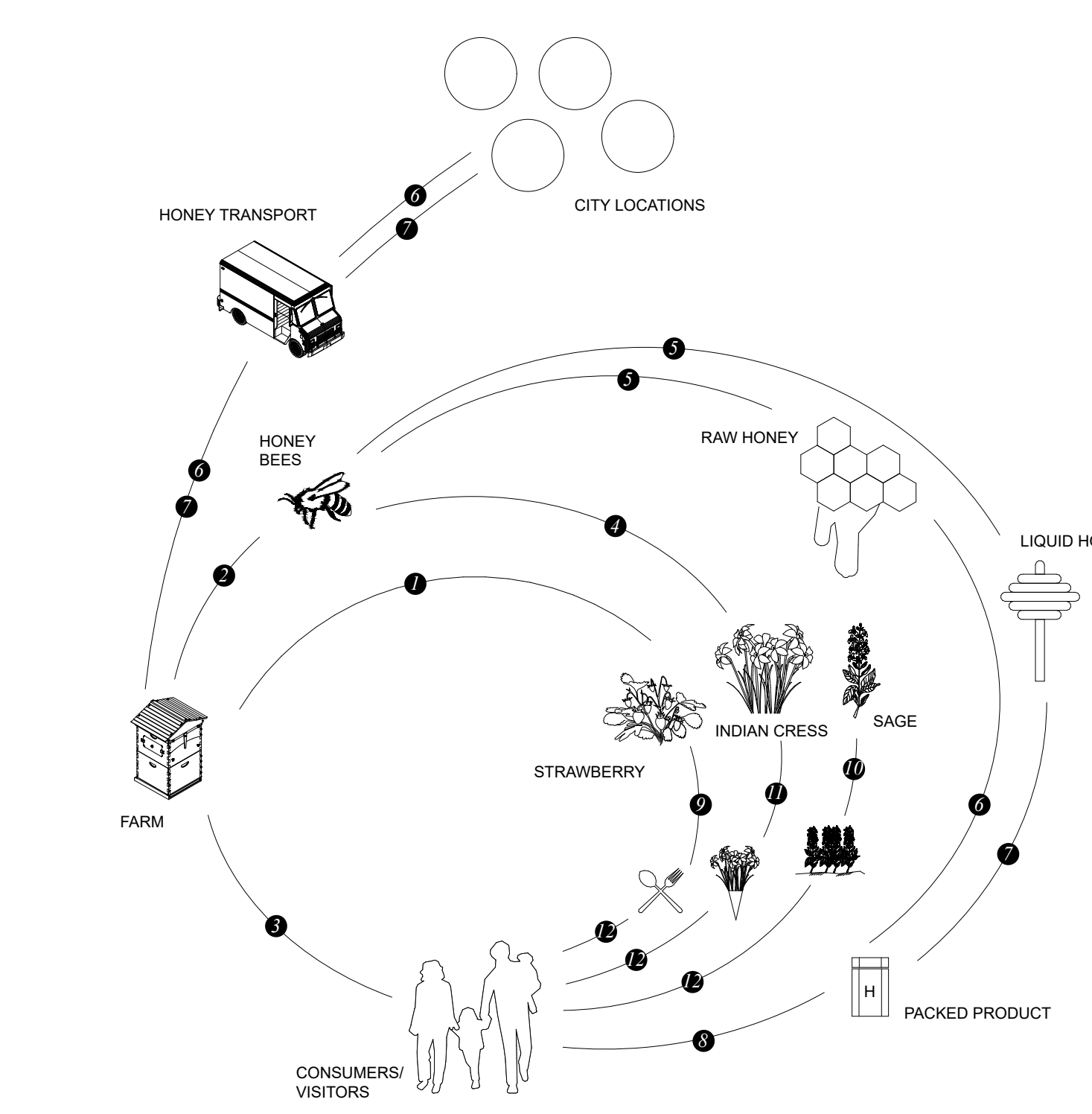


STRUCTURE



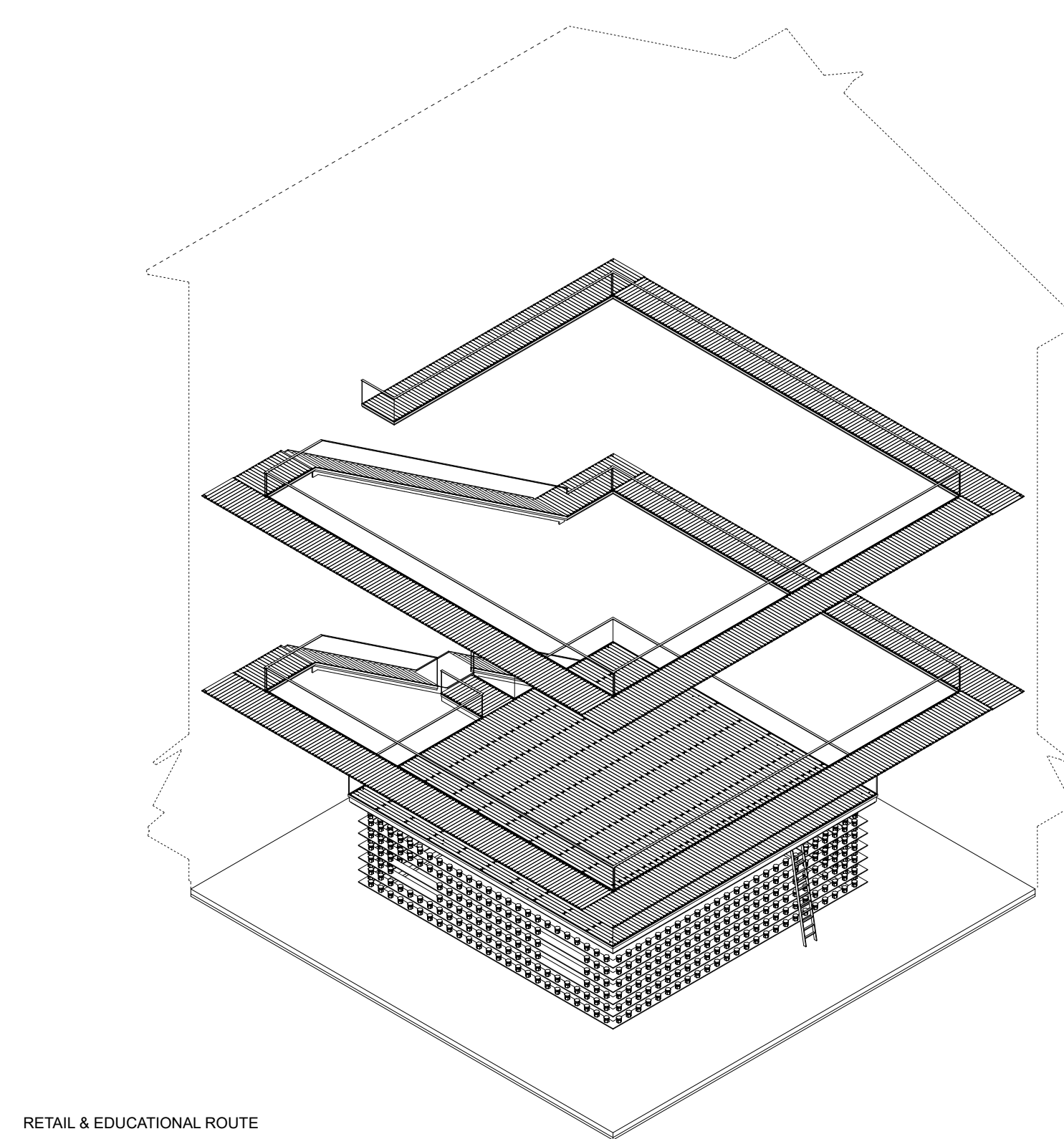
- 1 BEEHIVE DECK
- 2 BEEHIVE
- 3 SCISSOR LIFT
- 4 WATER PULLEY MODULE
- 5 VISITOR BOARDWALK

FLOOR PLAN 01



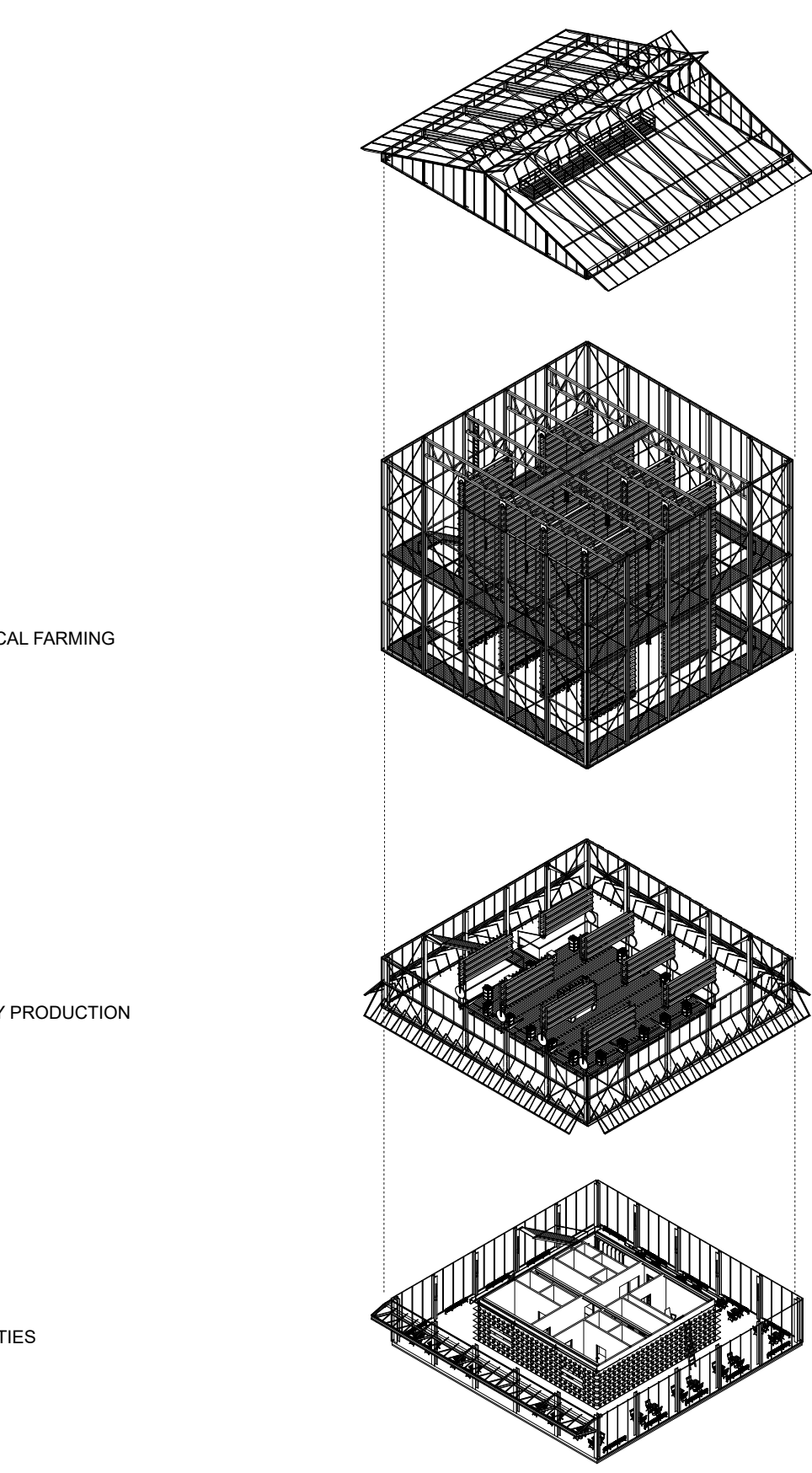
- 1 FARMED PLANTS/FLOWERS
- 2 ADDITIONAL FEEDING (WINTER)
- 3 VISITING
- 4 POLLINATE & COLLECTING NECTAR
- 5 HONEY PRODUCTION
- 6 HARVEST SPAARKAST
- 7 HARVEST FLOW HIVE
- 8 HONEY PRODUCT
- 9 FOOD
- 10 PLANTS
- 11 OTHER
- 12 PLANT BASED PRODUCT

CIRCULARITY



RETAIL & EDUCATIONAL ROUTE

AGRI-CULTURE

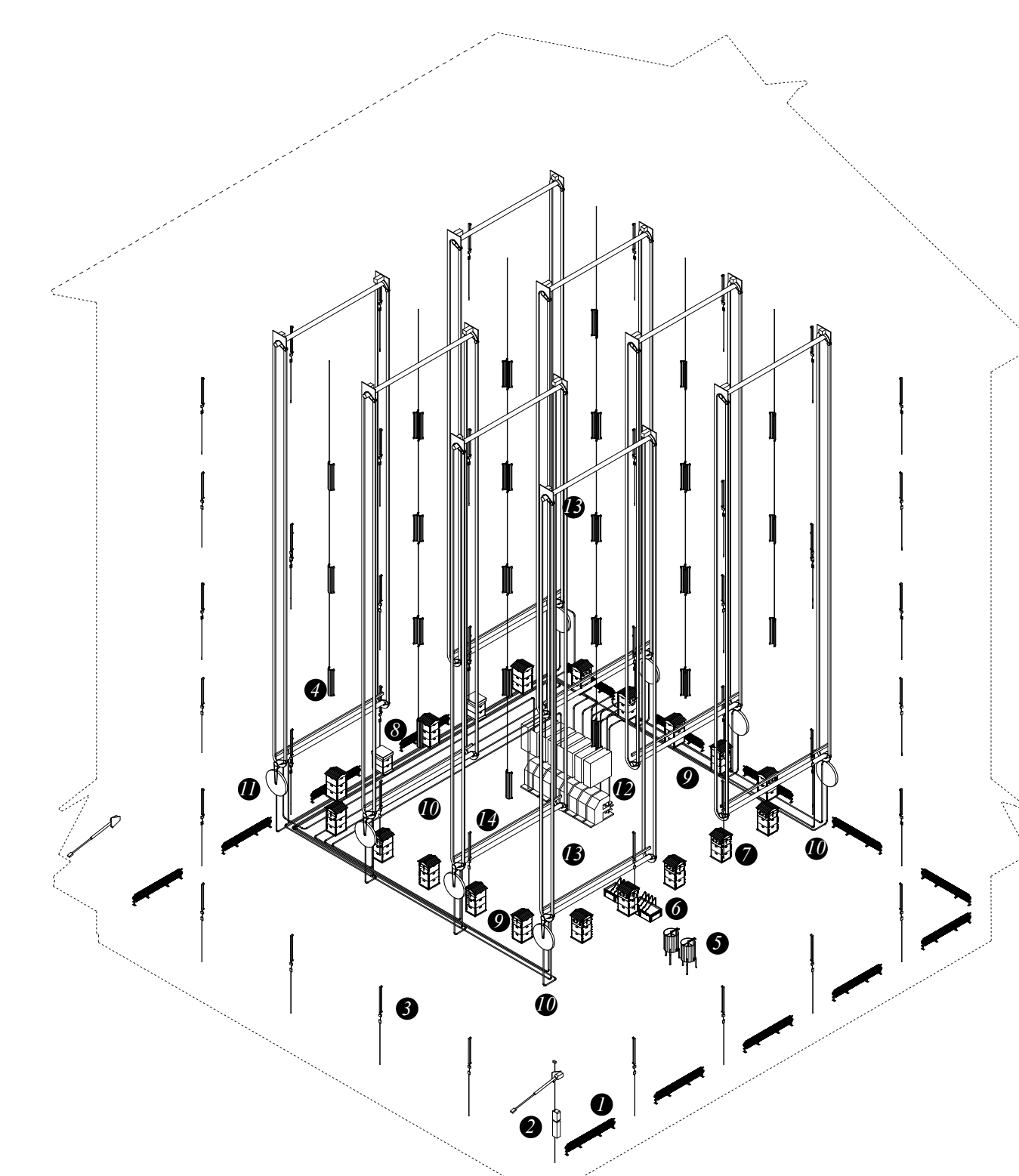


VERTICAL FARMING

HONEY PRODUCTION

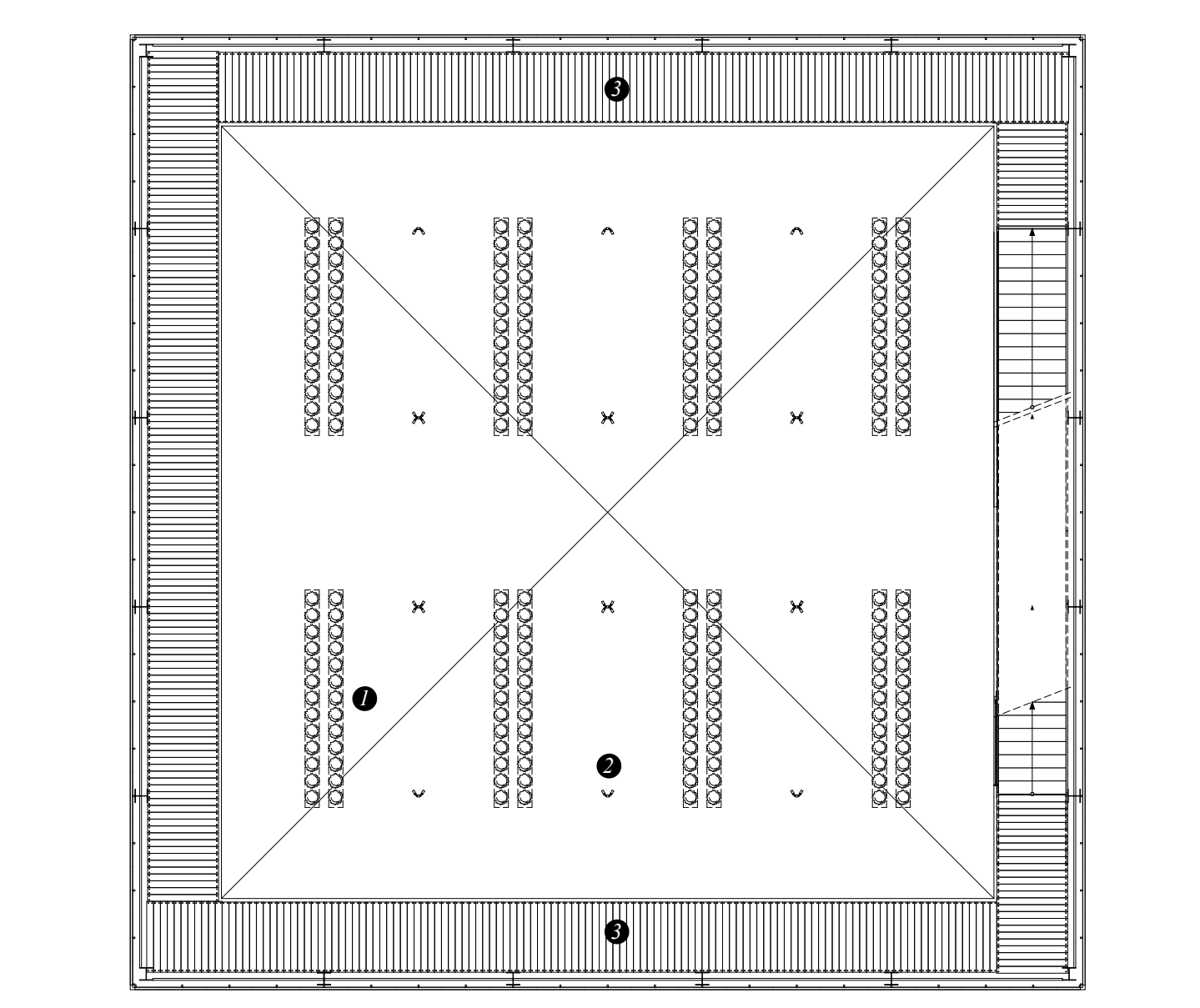
FACILITIES

THE COMPACT MODEL



- 1 RADIATOR
- 2 MAIN ENTRANCE DOOR OPENING SYSTEM
- 3 GENERAL LIGHTING
- 4 VERTICAL PLANTS LIGHTING
- 5 HONEY EXTRACTORS
- 6 UNCAPPING TRAYS
- 7 FLOW HIVE
- 8 SPAARKAST
- 9 WATER PIPES IRRIGATION SYSTEM
- 10 WATER PIPES WATER PULLEY SYSTEM
- 11 WATER PULLEY
- 12 WATERTANK & GENERATOR
- 13 VERTICAL FARM ROTATING SYSTEM
- 14 IRRIGATION SYSTEM

INFRASTRUCTURE



- 1 VERTICAL FARM
- 2 PLANTS LIGHTING
- 3 VISITOR BOARDWALK

FLOOR PLAN 02

LIQUID GOLD N°15

BRADLEY HOEDEMAN

