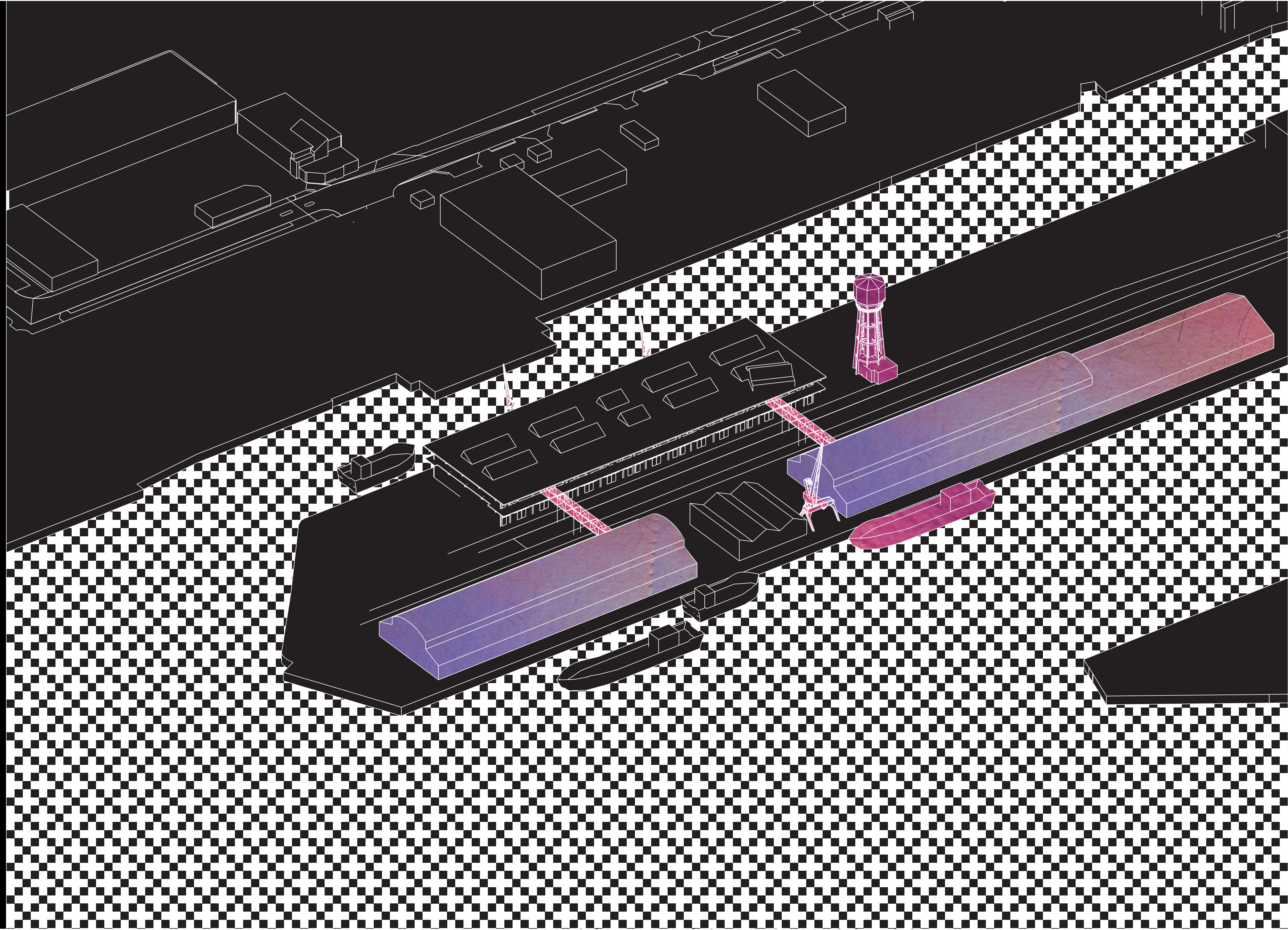


recon- structing

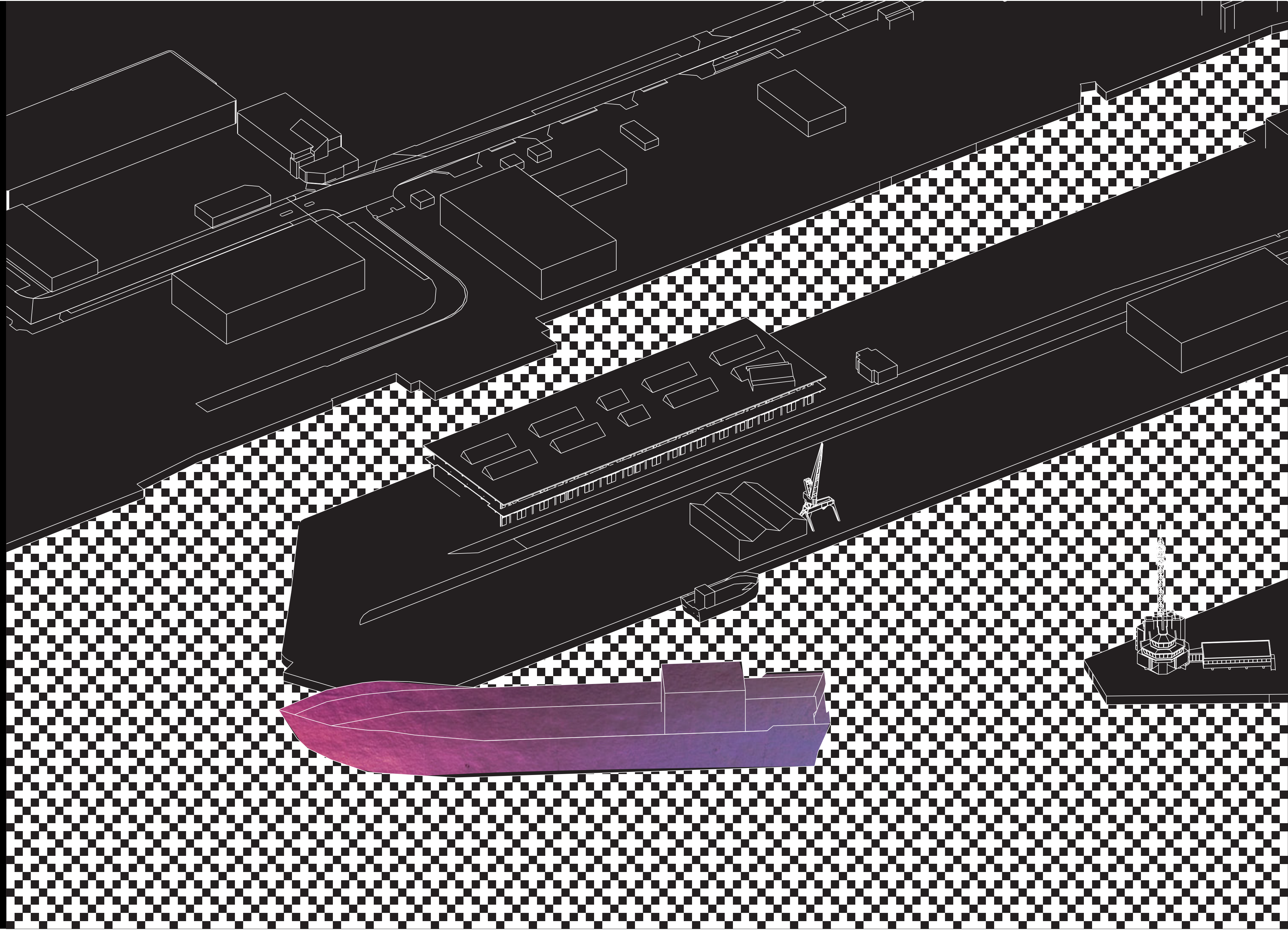
EEN NIEUWE RECONSTRUCTIE VAN M4H

ontwikkeling katoenveem
reconstructivist concept M4H
reconstructieve technieken in 2050
de voorwaarden
volume bepaling
programma omgeving
programma toren
interior views
eindbeeld

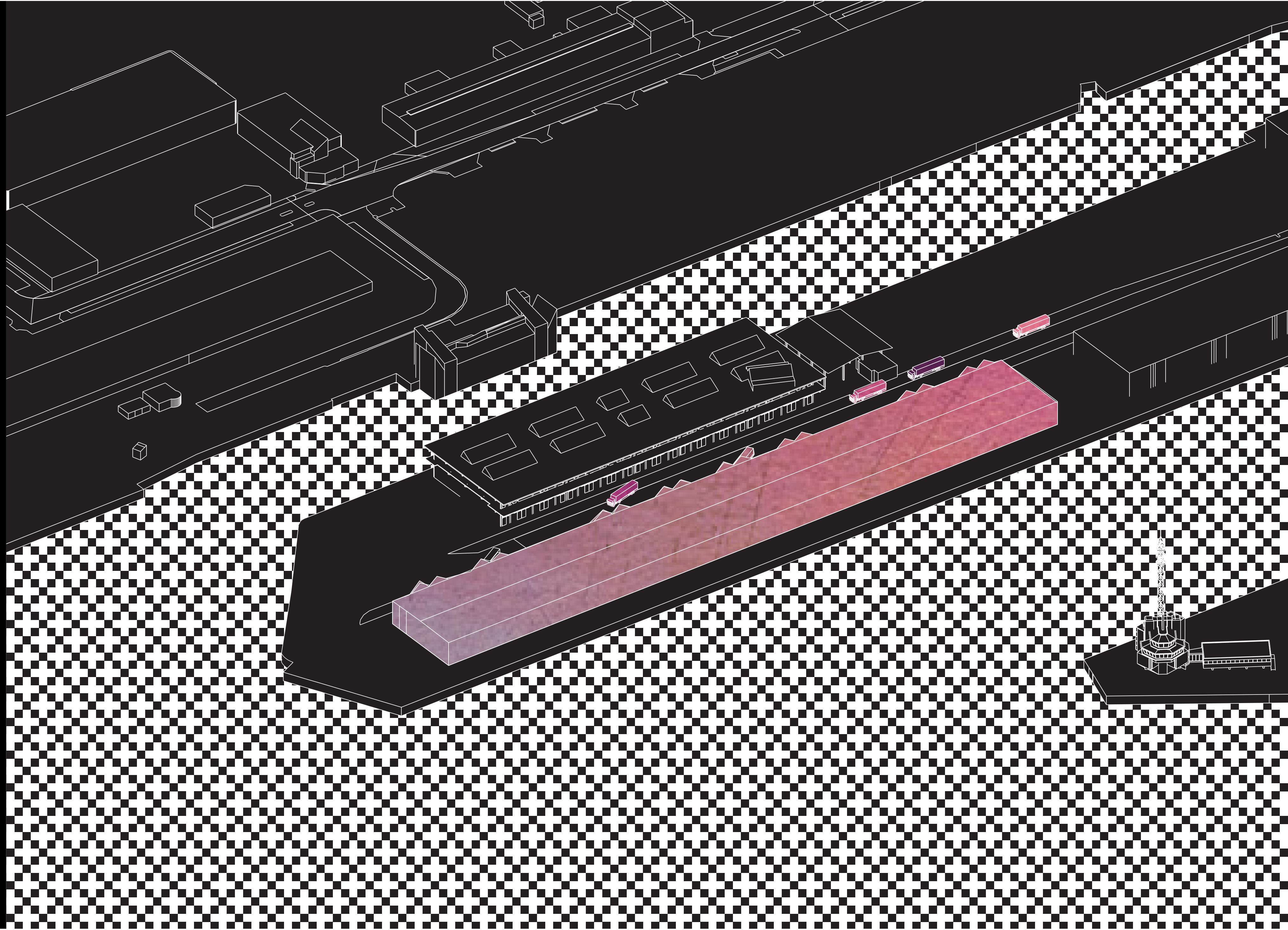
1920

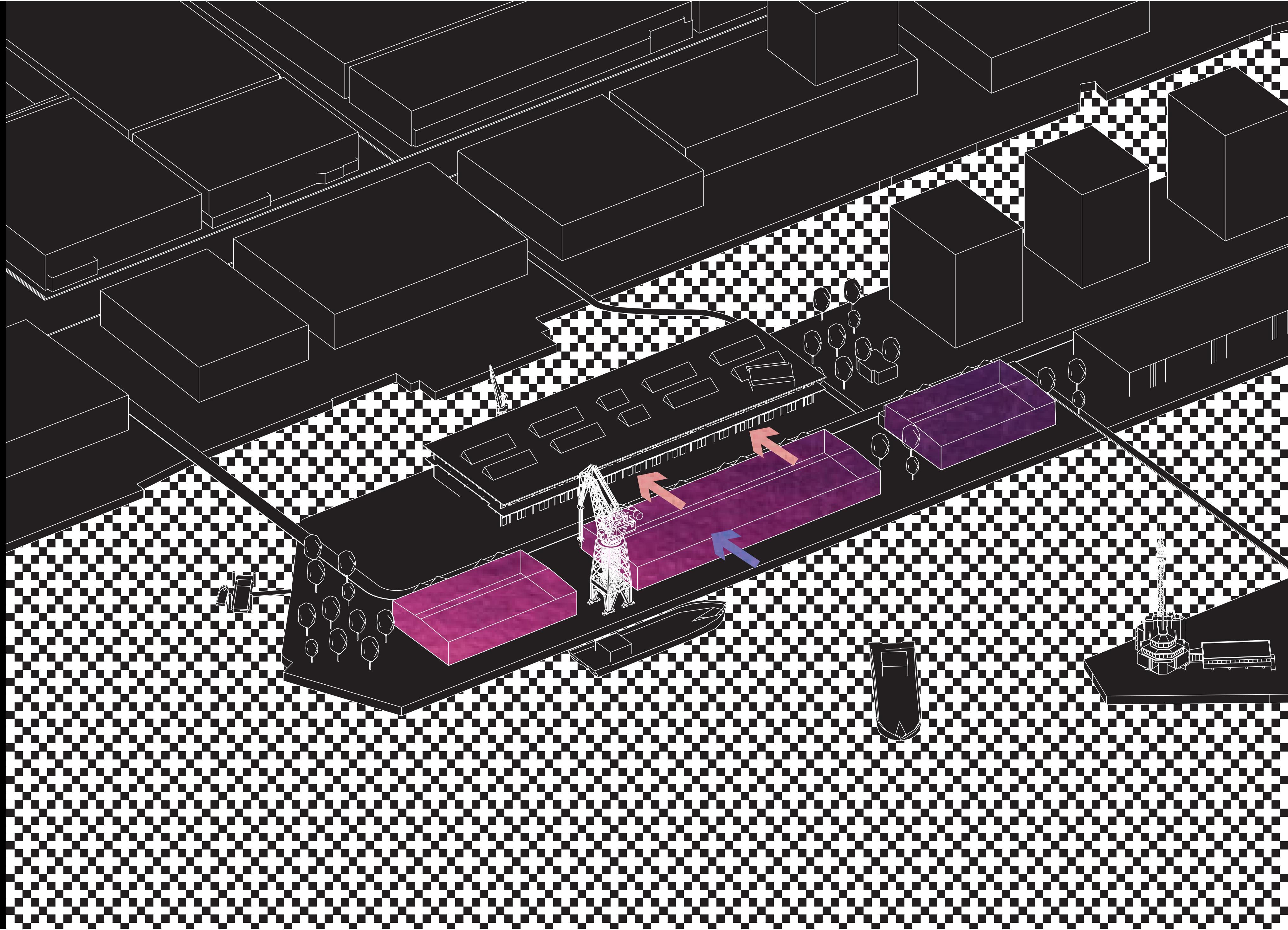


1960

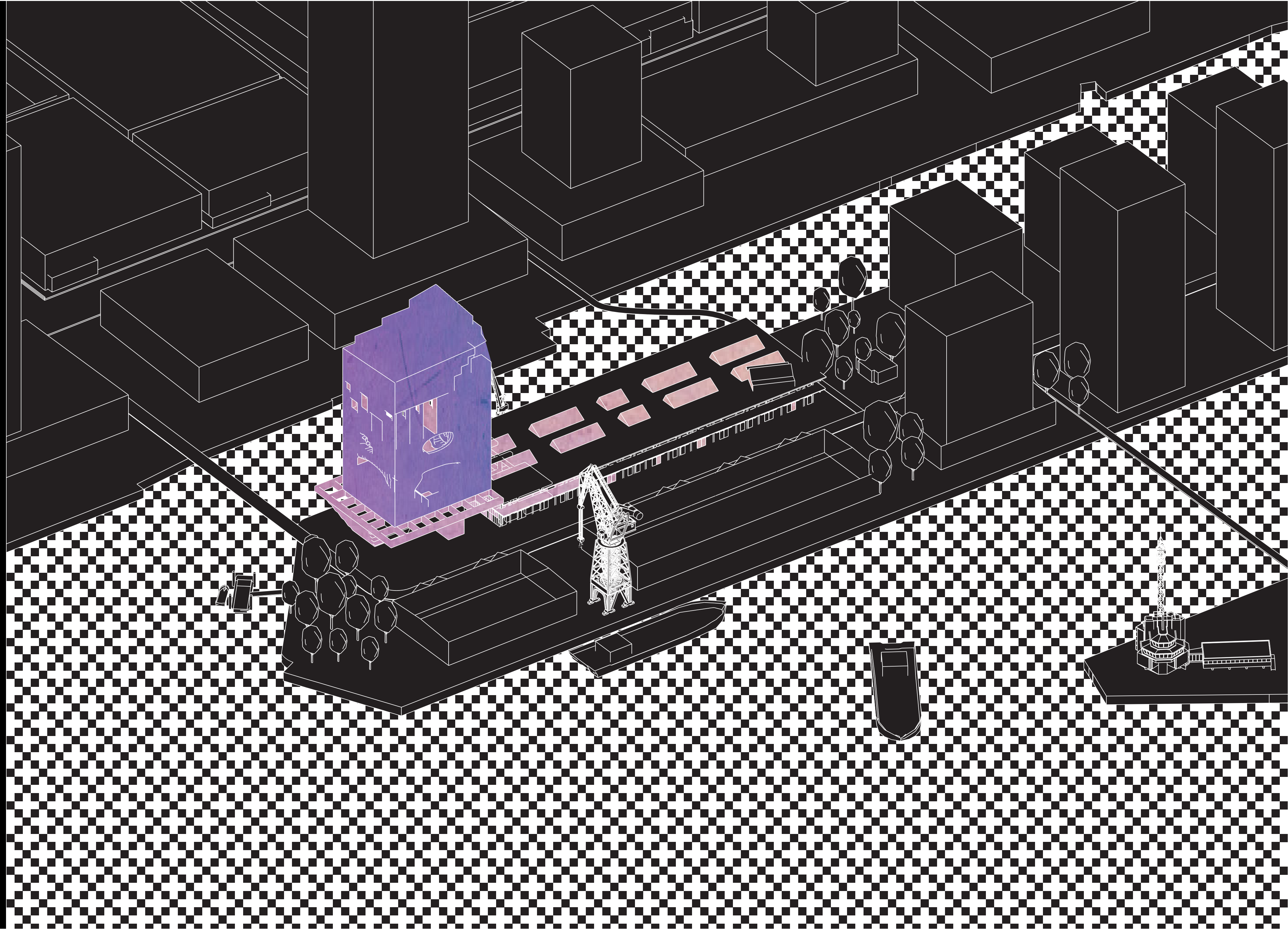


1997

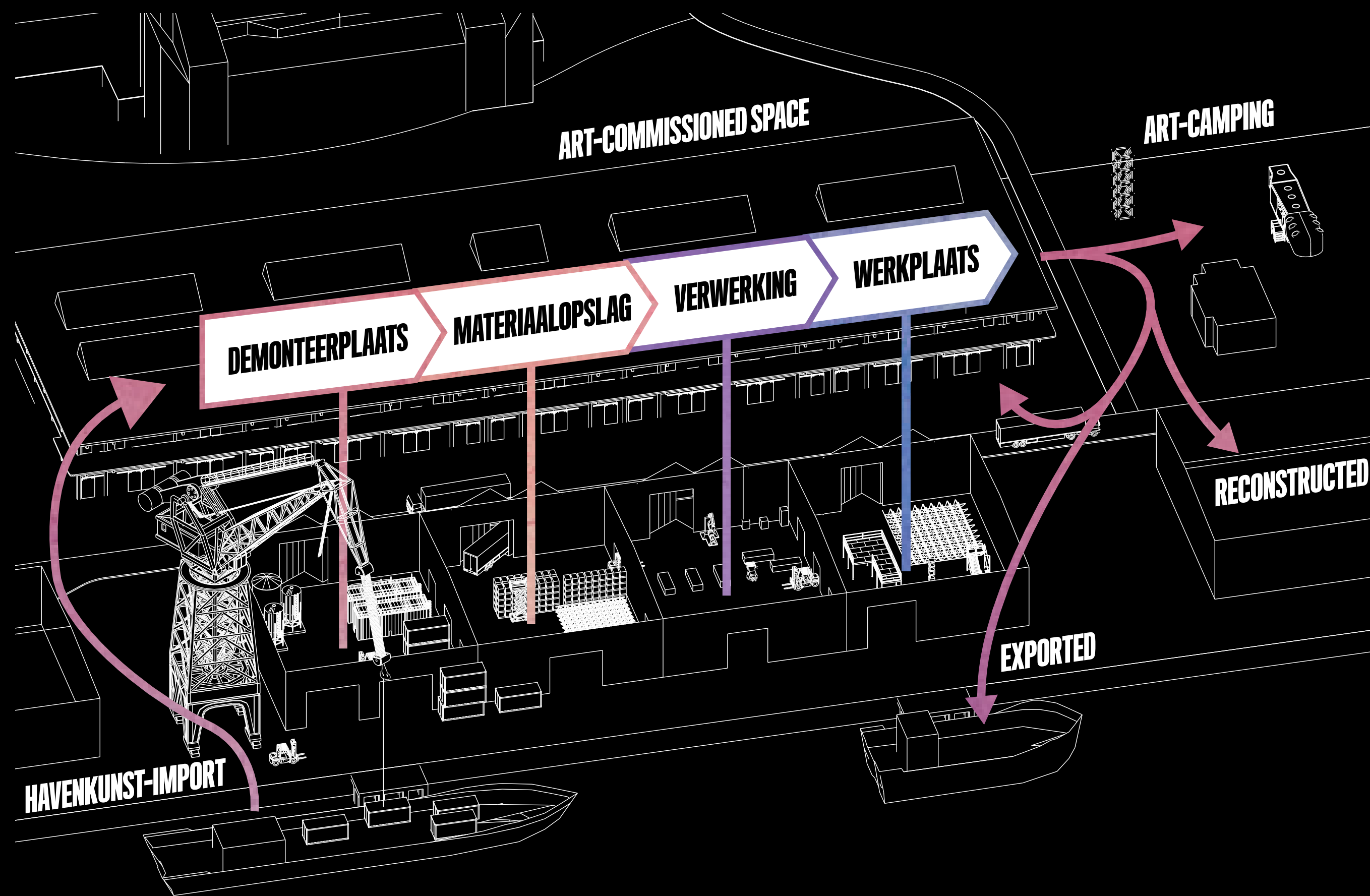
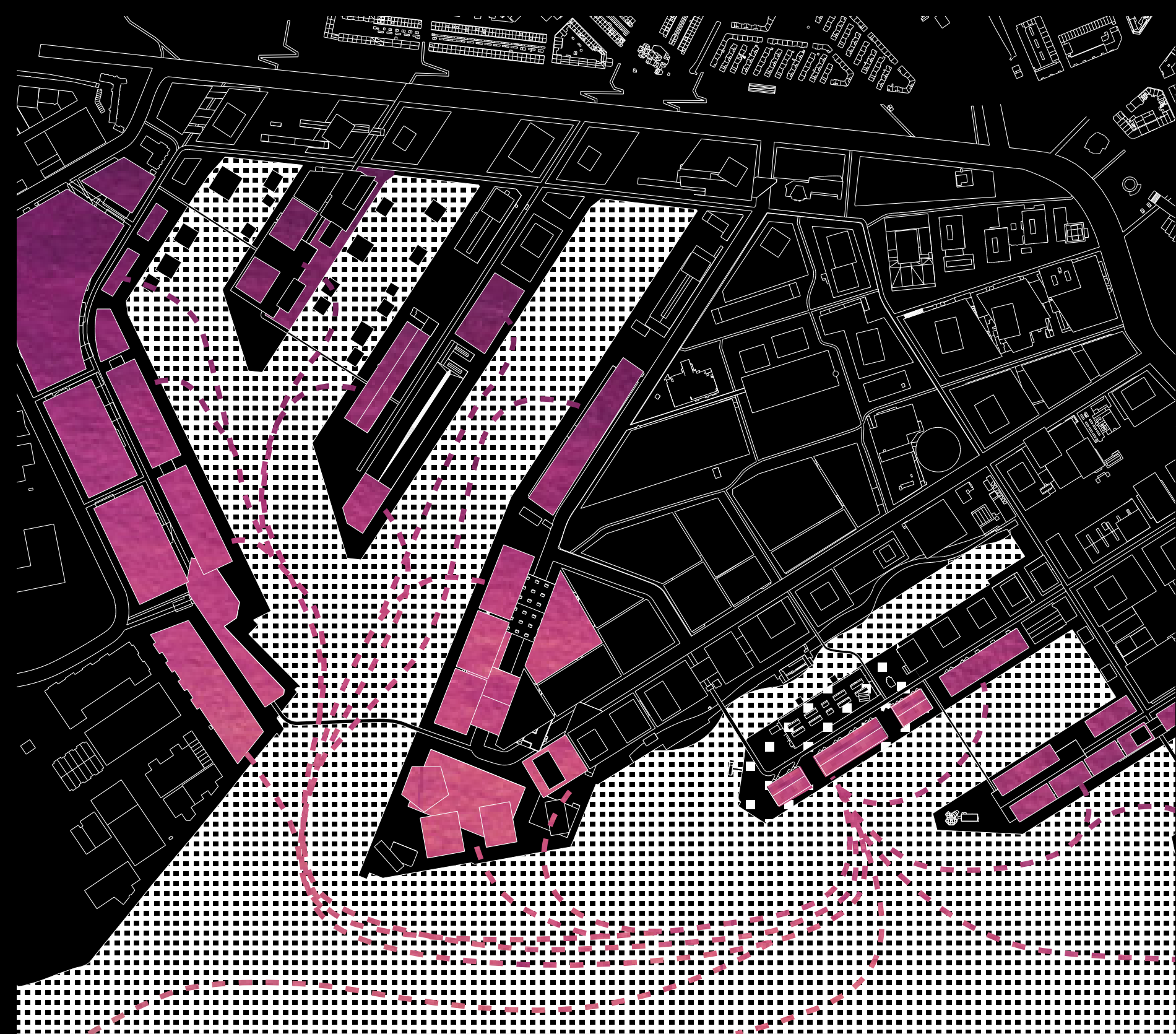




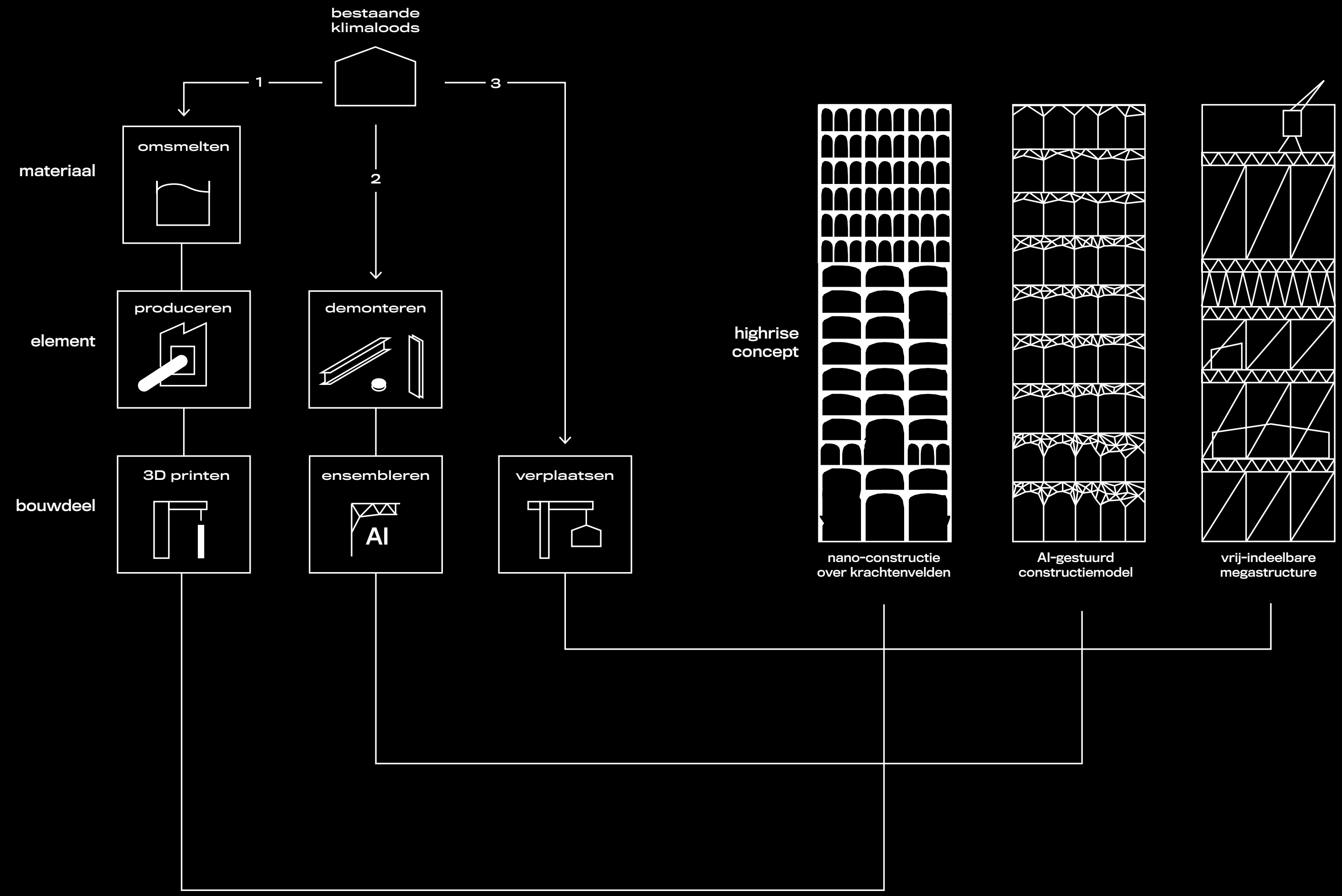
2050

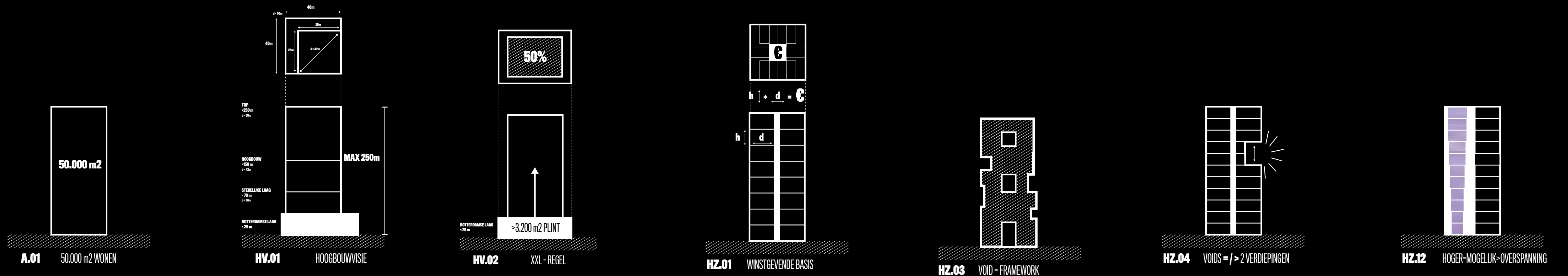


reconstructieve gebiedsontwikkeling

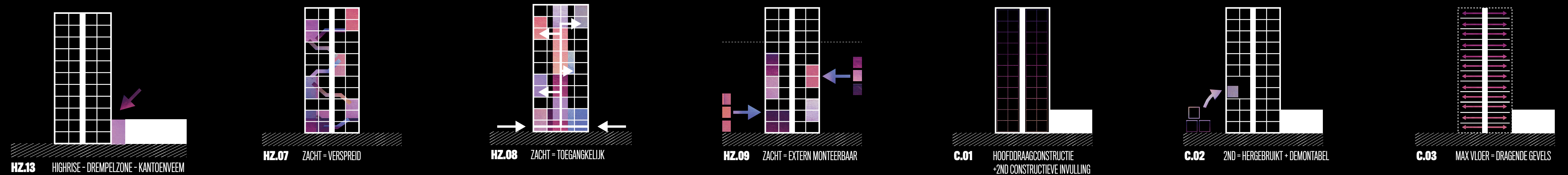


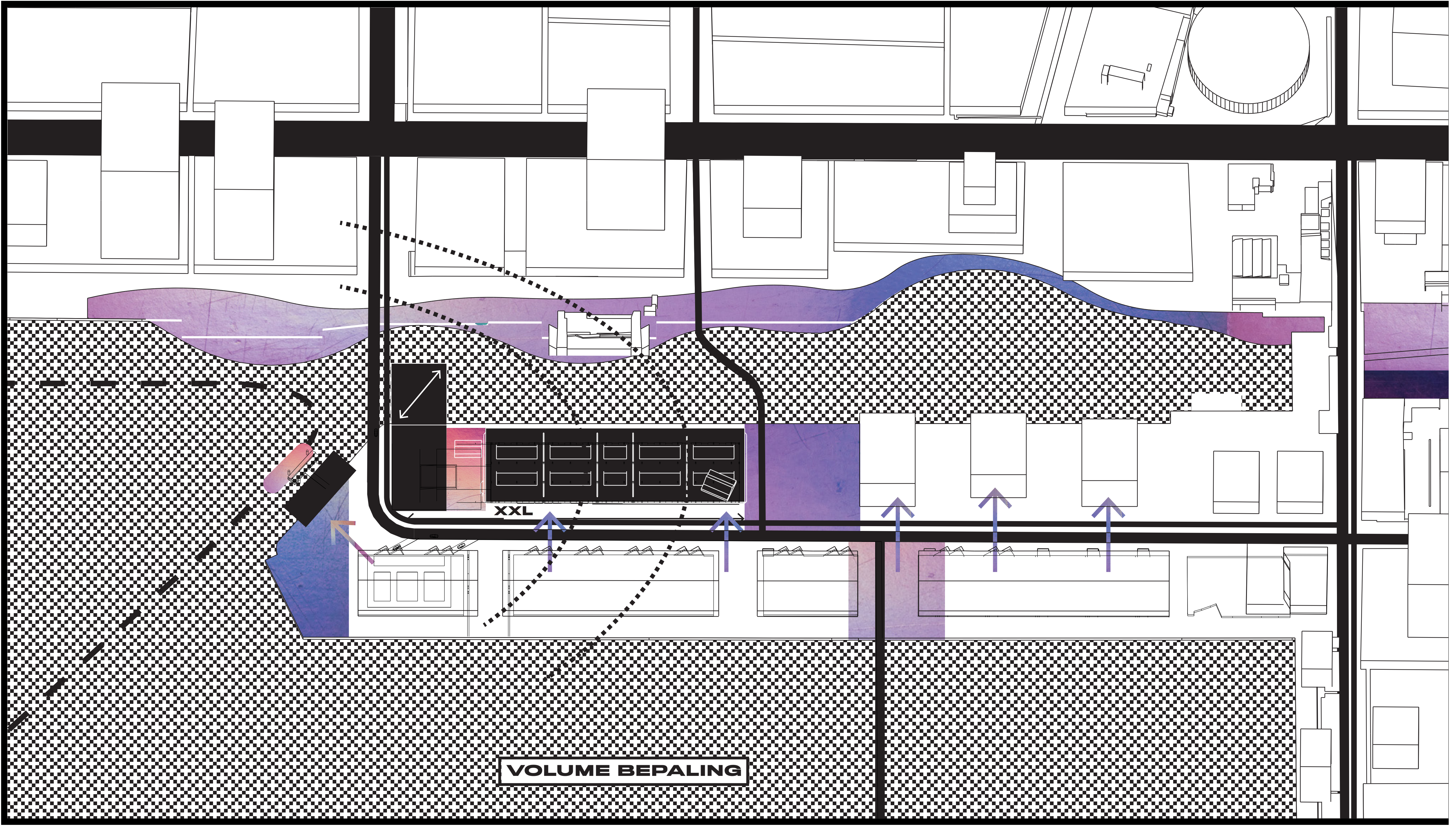
reconstructieve technieken





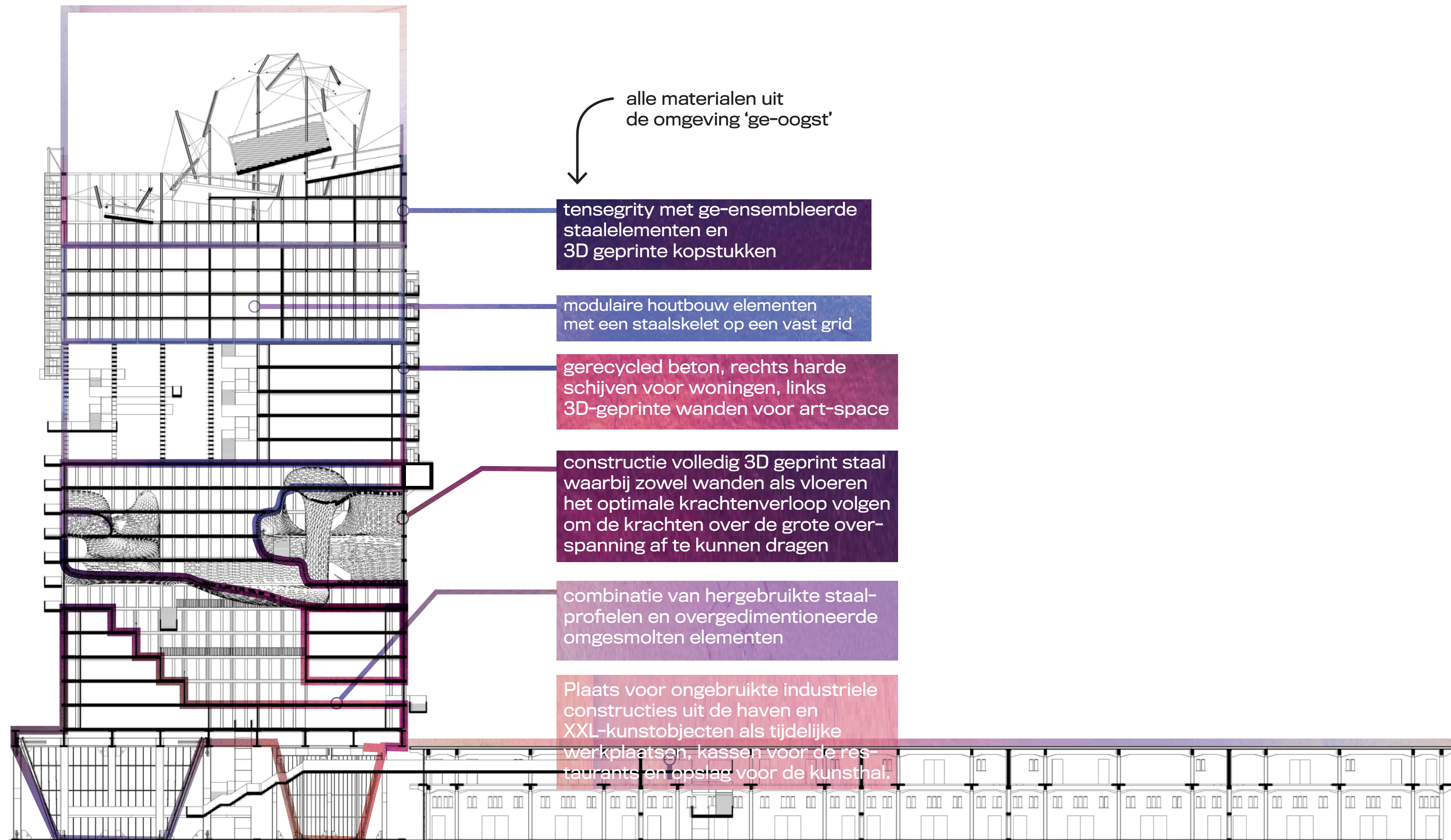
regels, randvoorwaarden en kansen





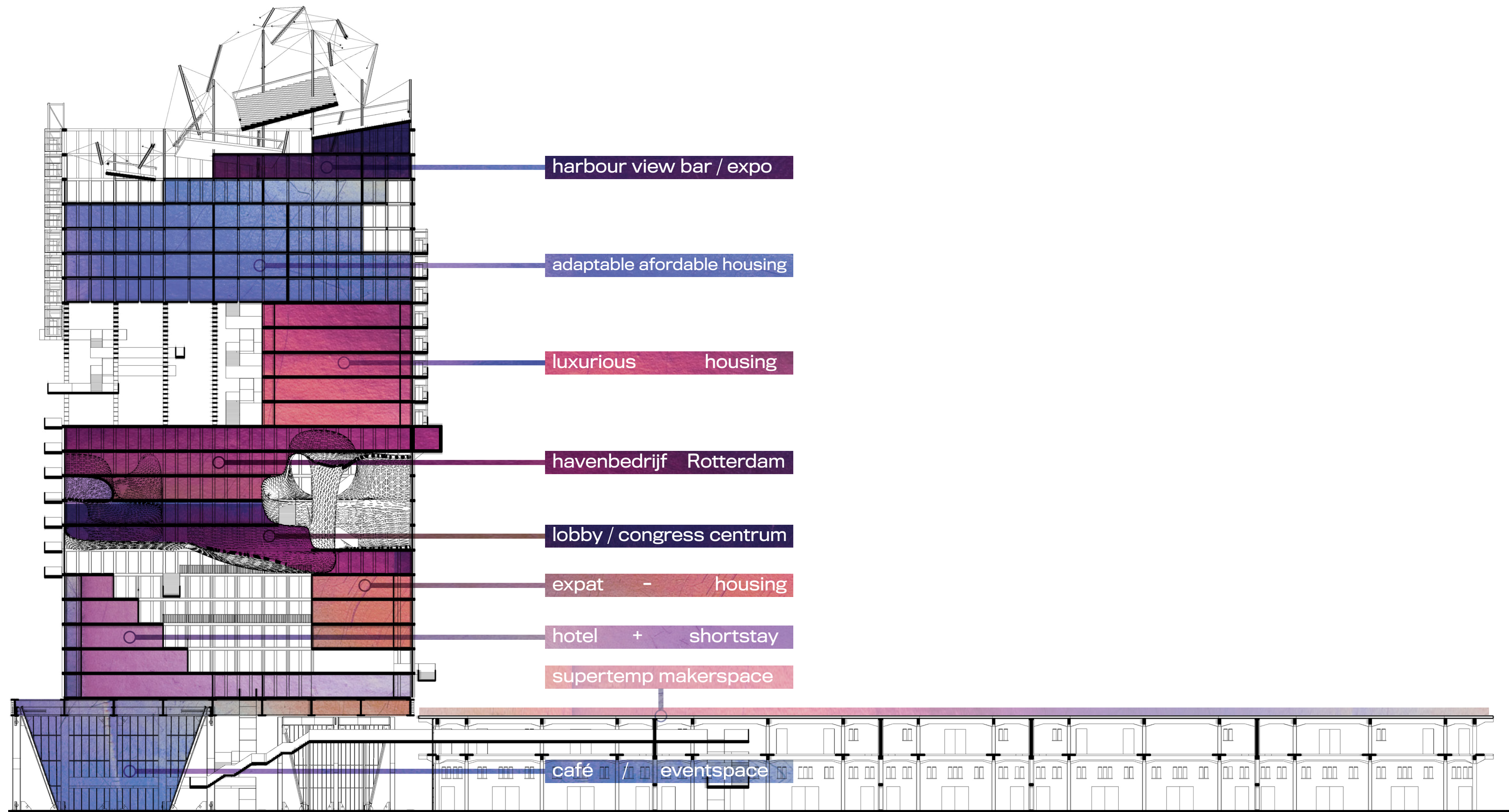
VOLUME BEPALING

constructieve toepassingen



*het dak van het katoenveem is extra versterkt door de grote balen geperst katoen die op rails hieraan werden getransporteerd

verdeling programma



SNEDE - BB





