

Basisschool **De Bonte Geit**

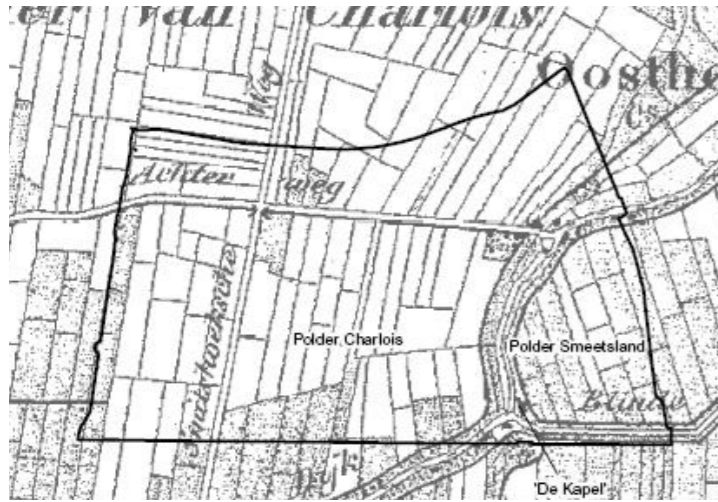




Zuidwijk History

First 'tuinstad' with a strong community

Polder van Charlois



1850

(Tweede) Wijkgebouw Larenkamp



1970

Protest on closing wijkgebouw Larenkamp

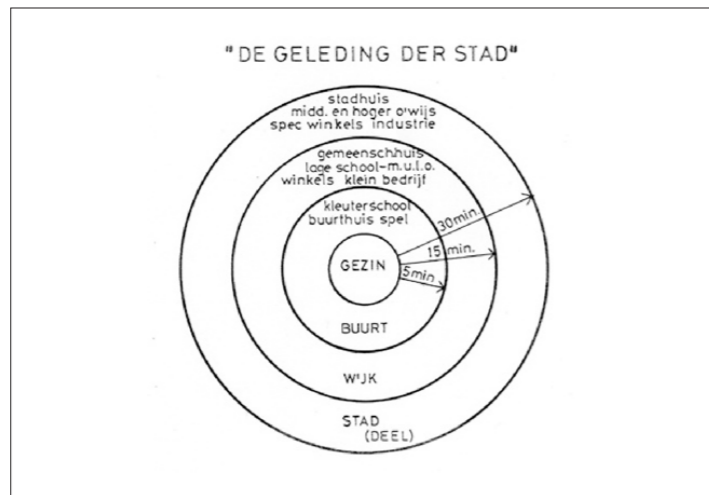


2015

1950

1960

2020



Wijkgedachte :
Stad der toekomst, toekomst der stad



Eerste wijkgebouw Larenkamp



Location Slinge 303

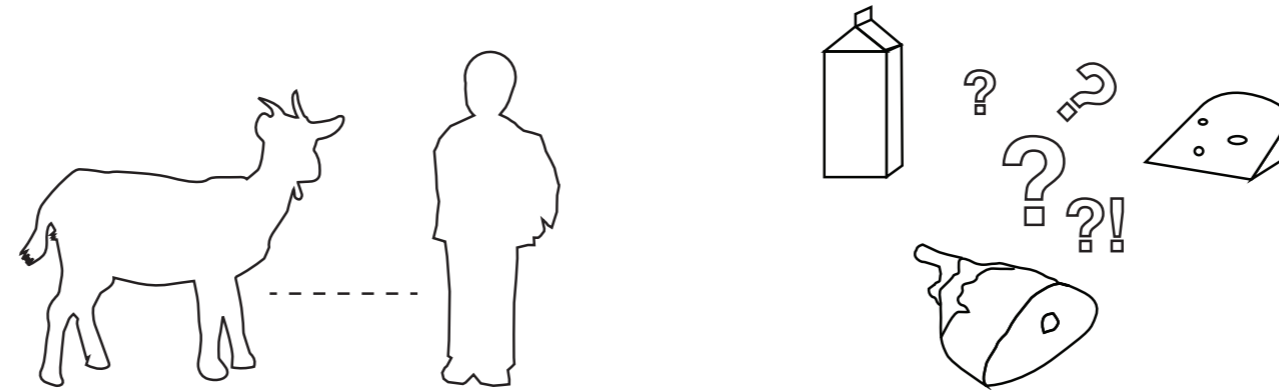
Pilot project: a school with a farm

Within the heart of Zuidwijk

**RESPONSIBILITY
OF OWNERSHIP**

+

ORIGIN OF FOOD



**GIVING A PLACE BACK TOT THE
ZUIDWIJKERS**

with possibilities for activities in
the proposed buildings during
weekends and evenings

A goat farm

Characteristics

Both children and goats are energetic but also do need keeping some rest and rhythm in their daily life



Scale / size

An adult goat has a wither height of 80 cm, children on a primary school vary from 100 - 150 cm

Full production line

Milk, Cheese, yoghurt, butter, icecream as a teaching method offers lots of possibilities

Popularity growth of goat products

As an alternative to cow-milk, less lactose good alternative for people with cow-milk allergies

Growth of Goat Farms

growth of goat farming the Netherlands between 2000 -2018 multiplied by 3



Spatious choice

A goat does not require as much space as a cow or sheep fit on location as a city farm

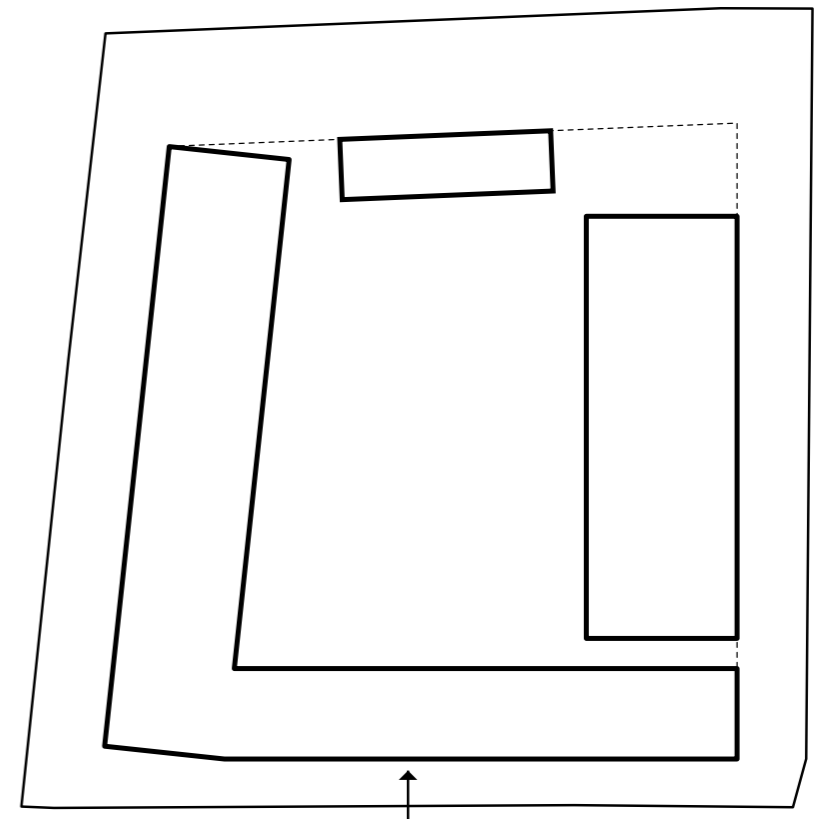
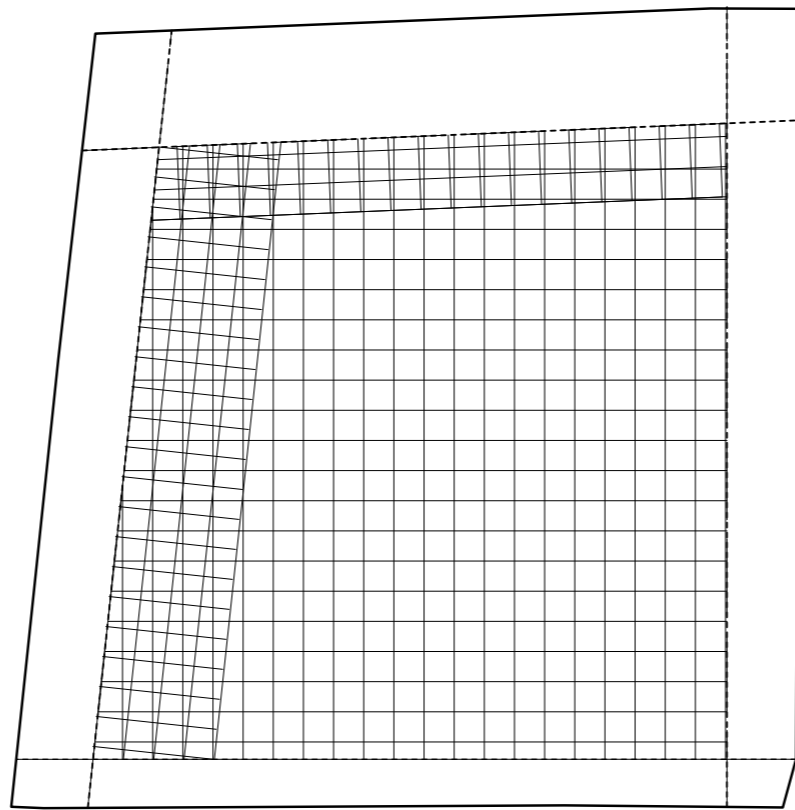
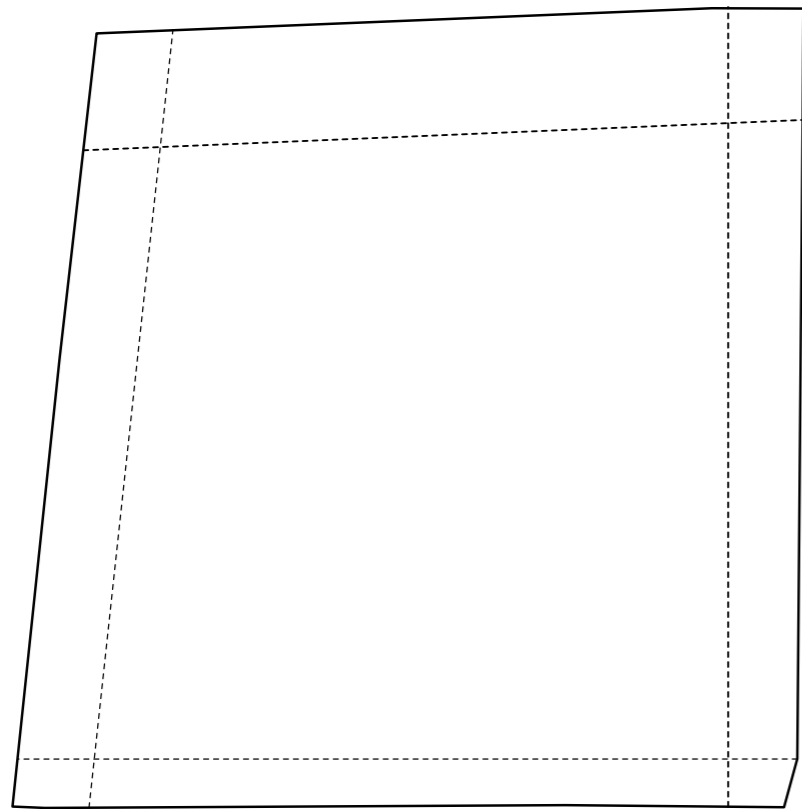
Farmers pleasure

Dynamic way of farming, easier to handle 80-85 kilos, bold and playful personality

De Hoeve - a new (old) typology

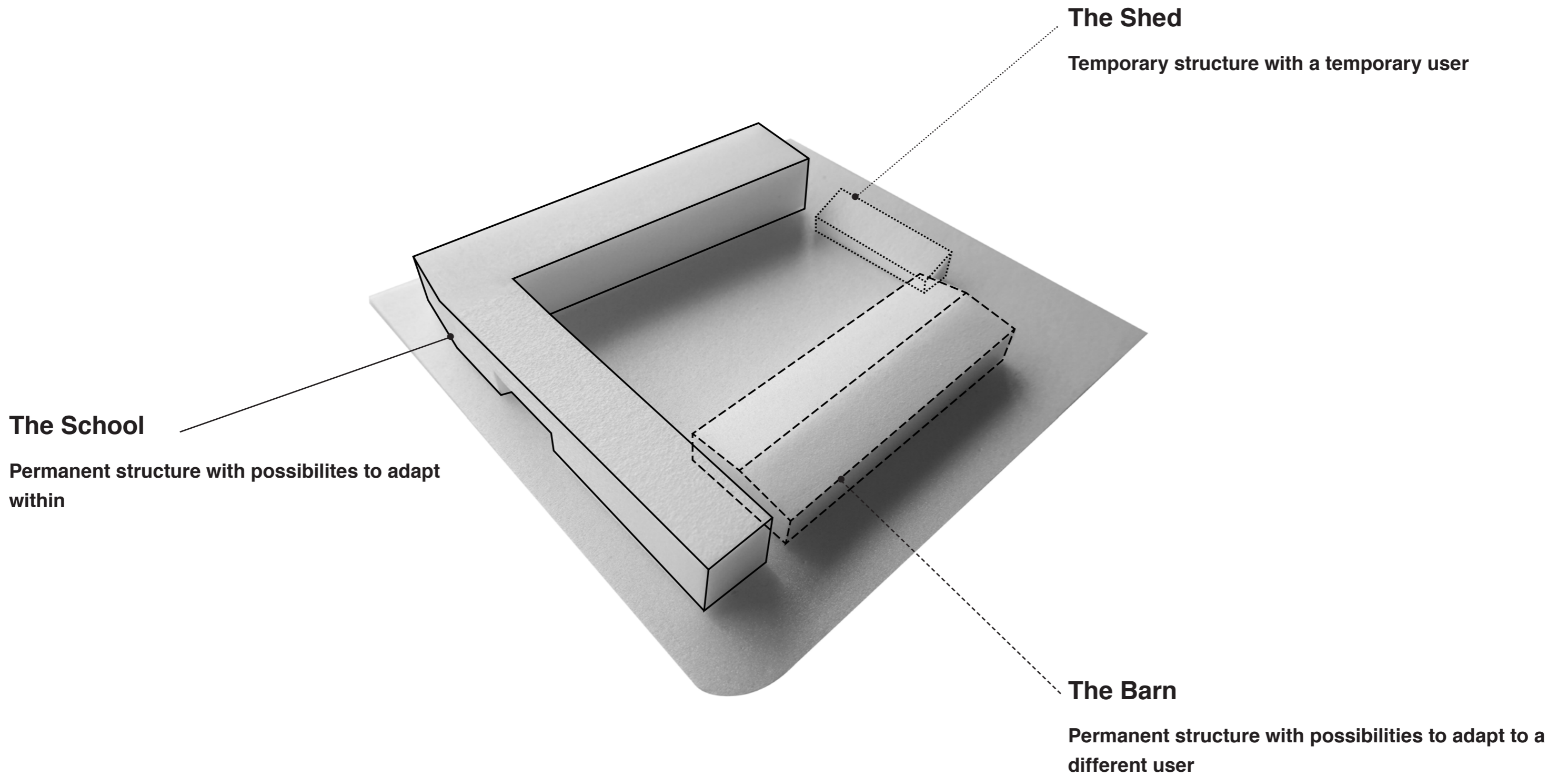


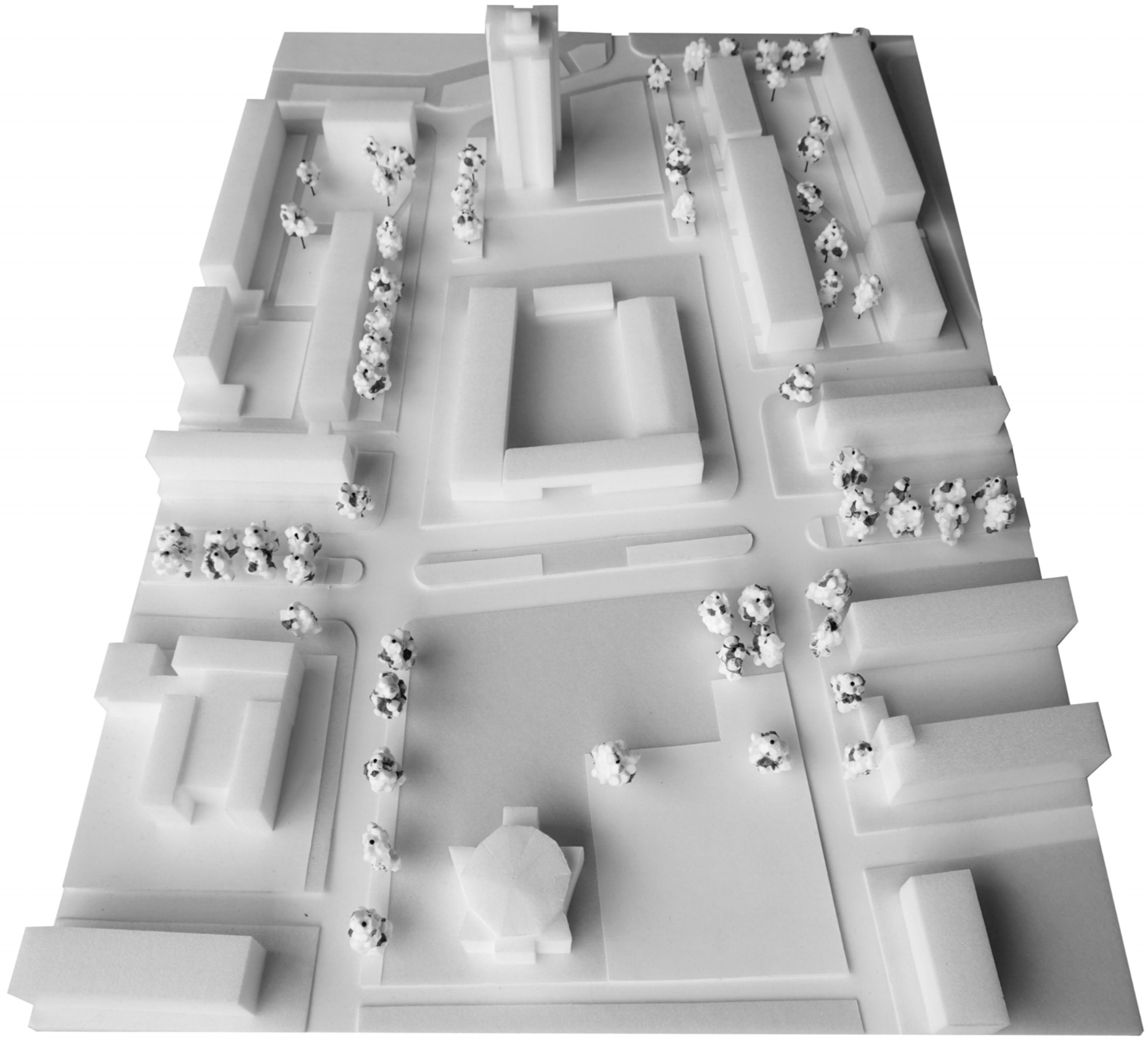
Axial Rotation



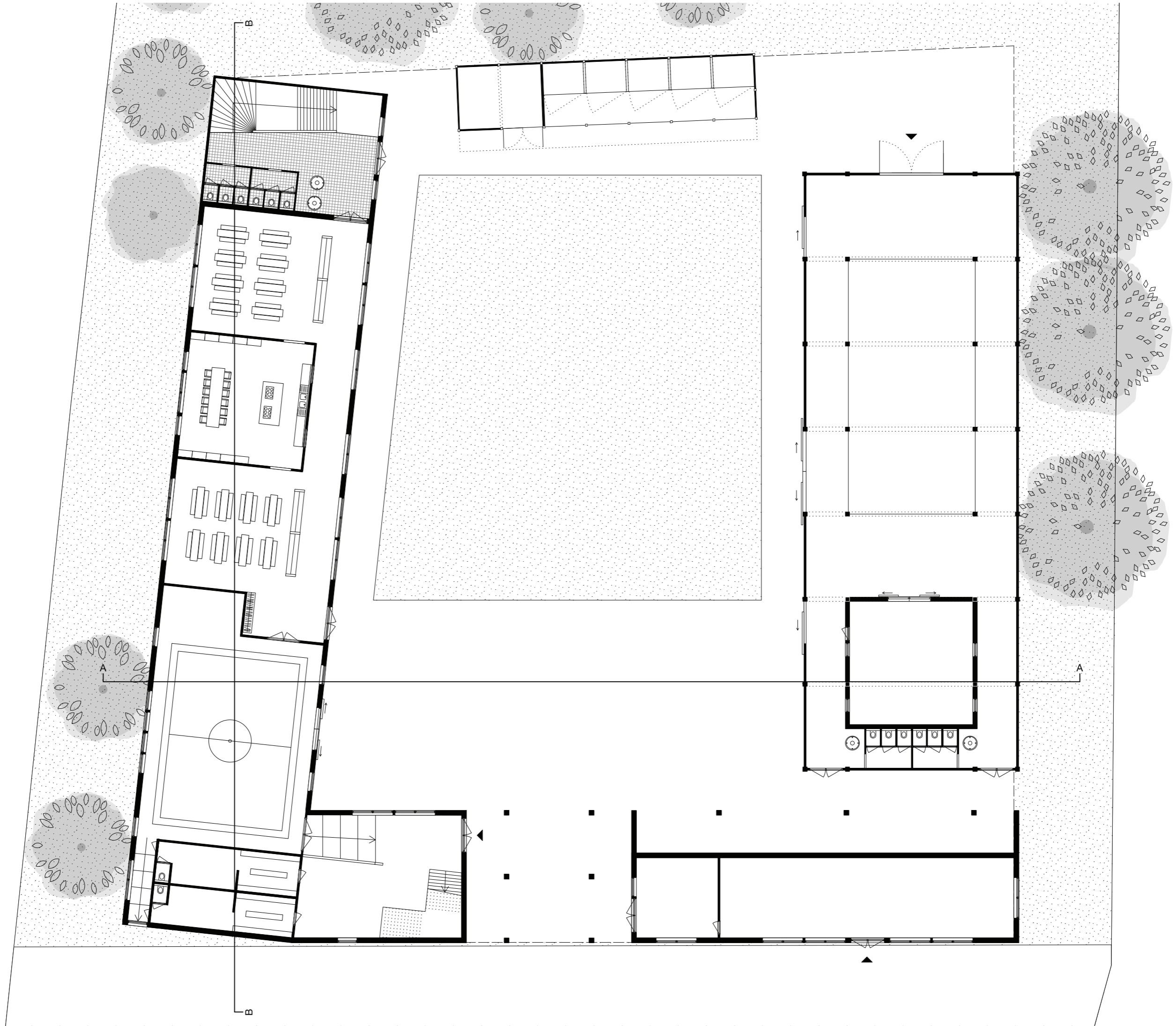
Volumes around a courtyard

Construction - Materialisation - Function

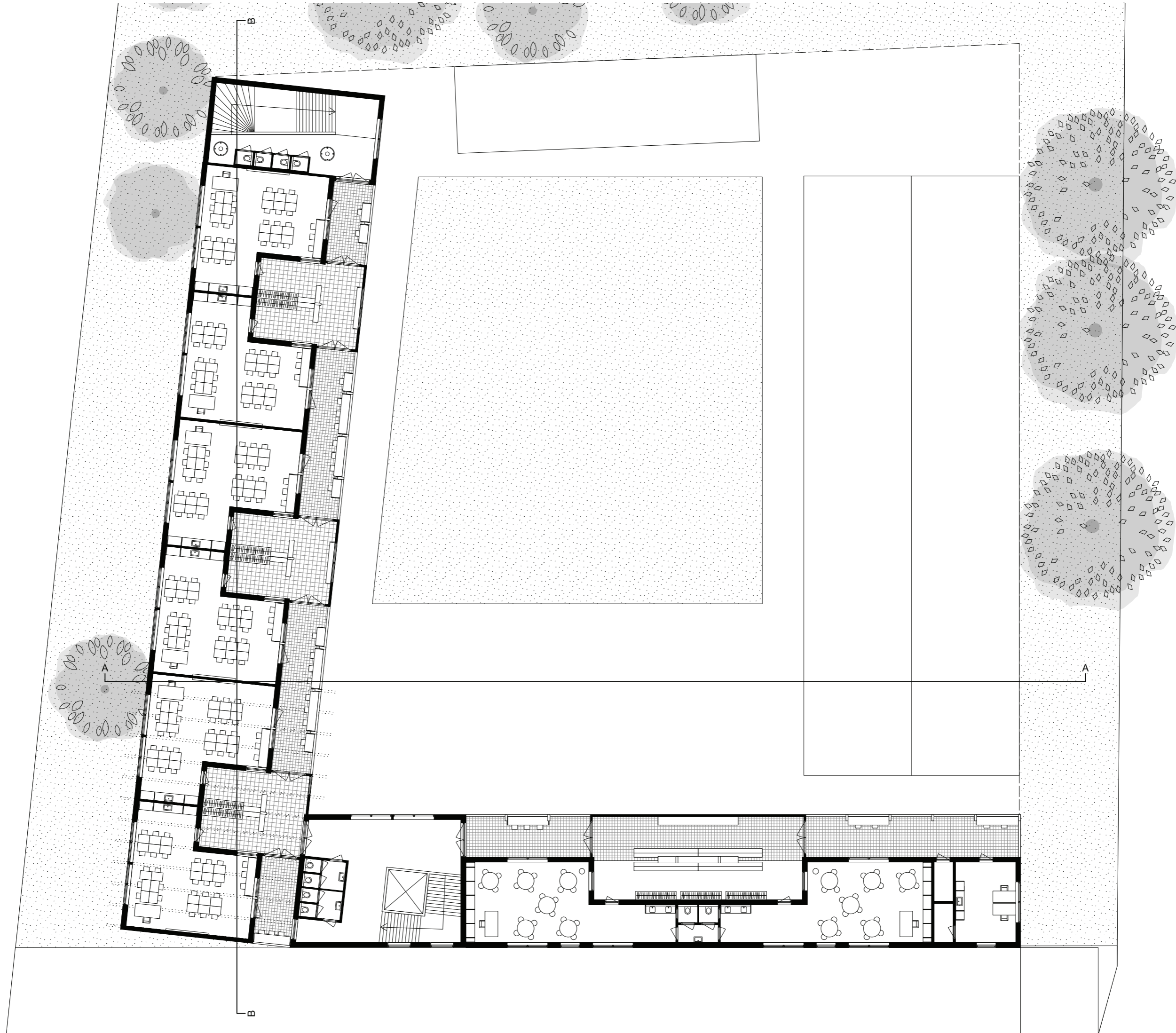




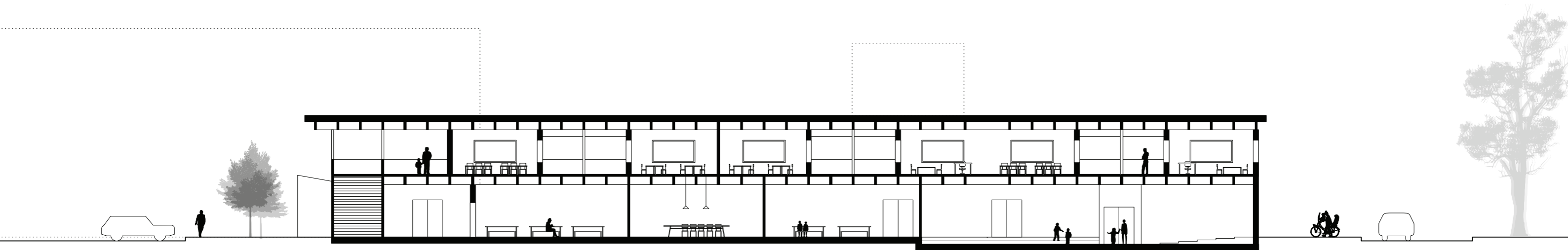
Plan 1:250
Ground Floor



Plan 1:250
First Floor



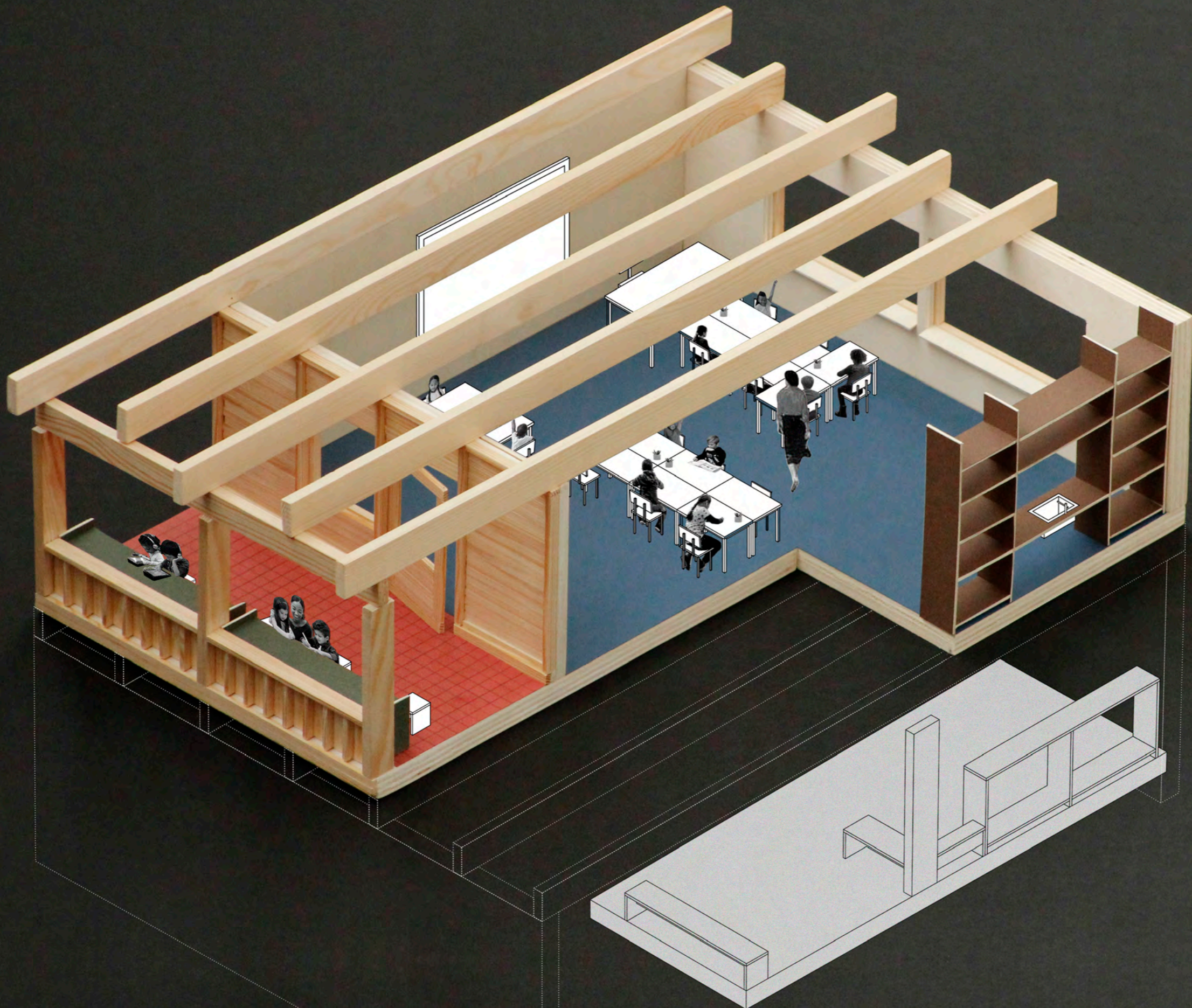
Section 1:250
North-South



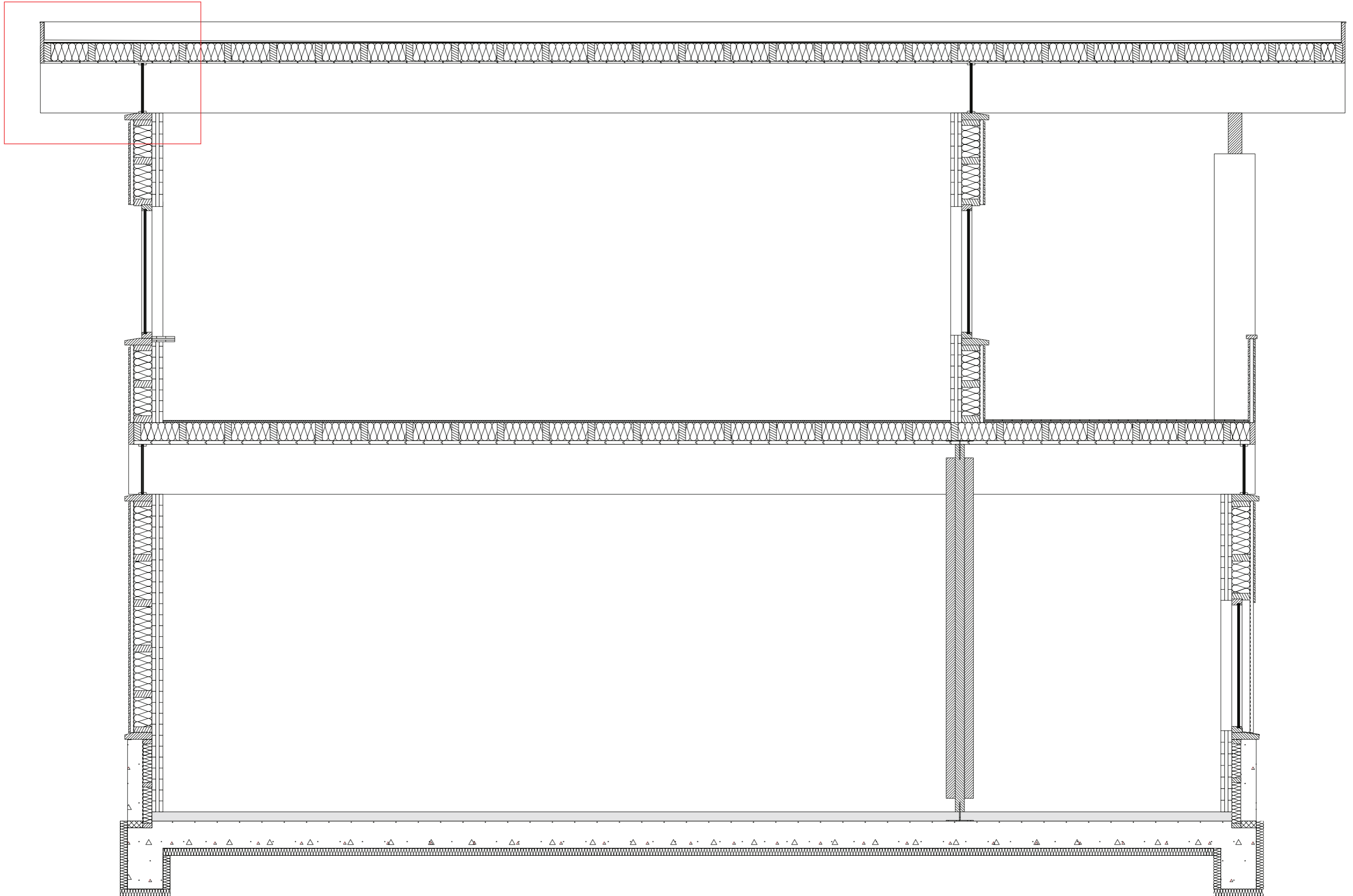
The School



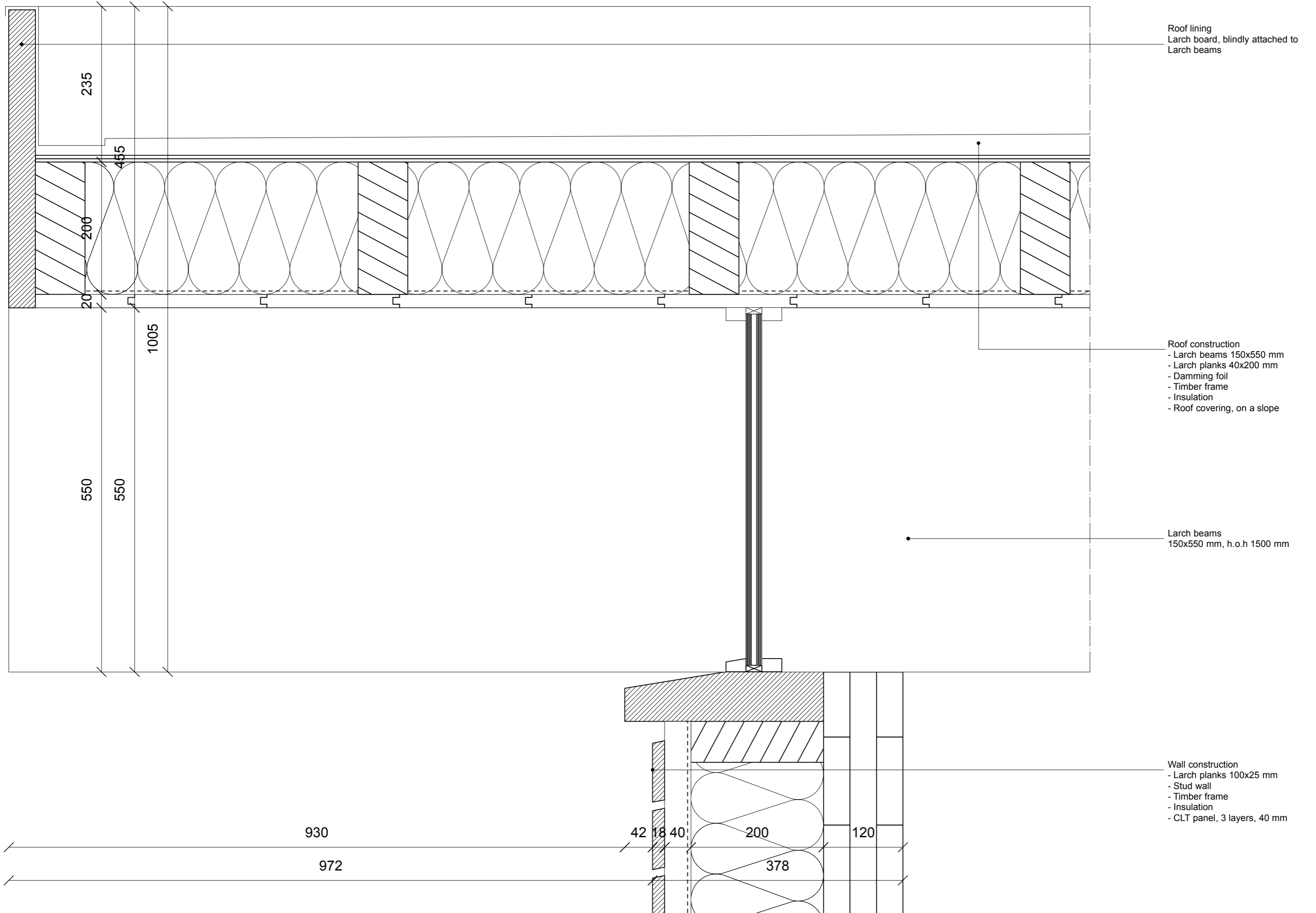
The School
A classroom



The School
Section west wing



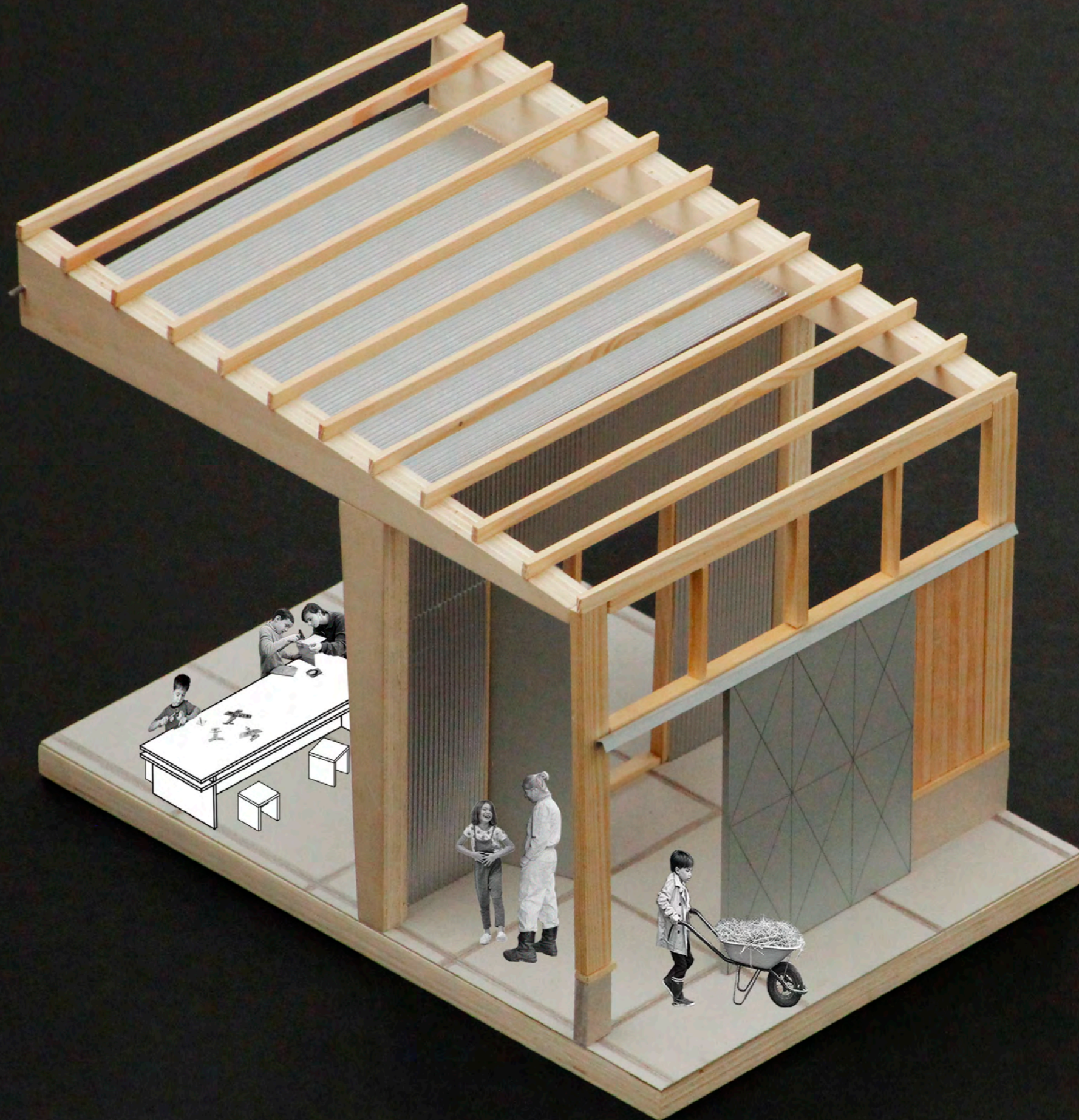
Detail 1:5

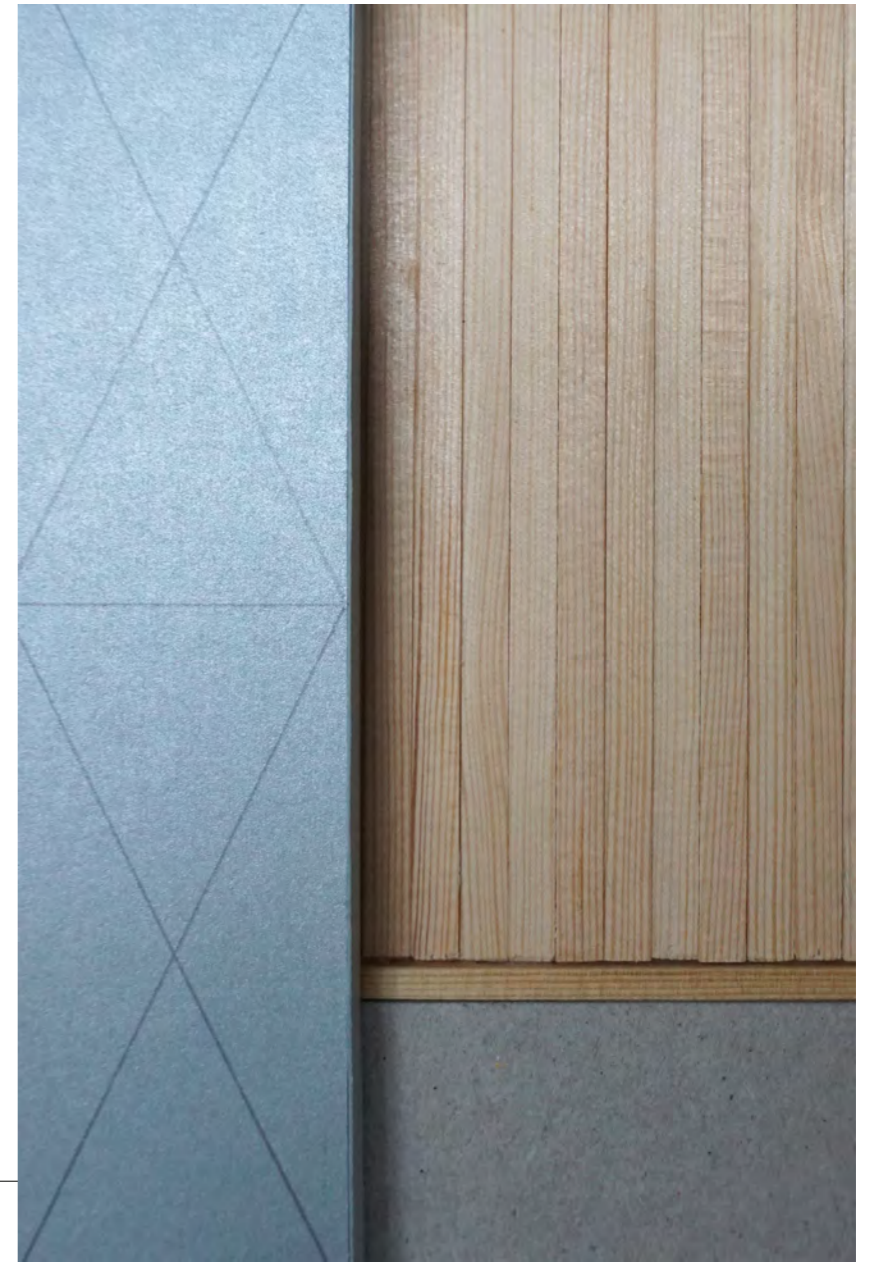
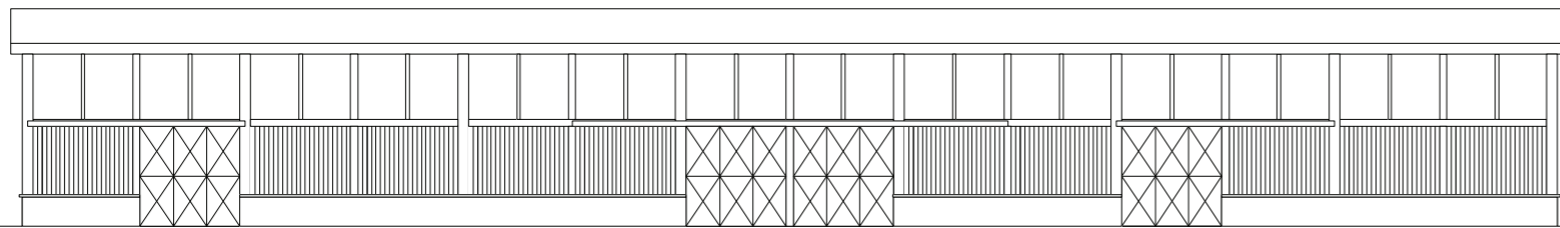
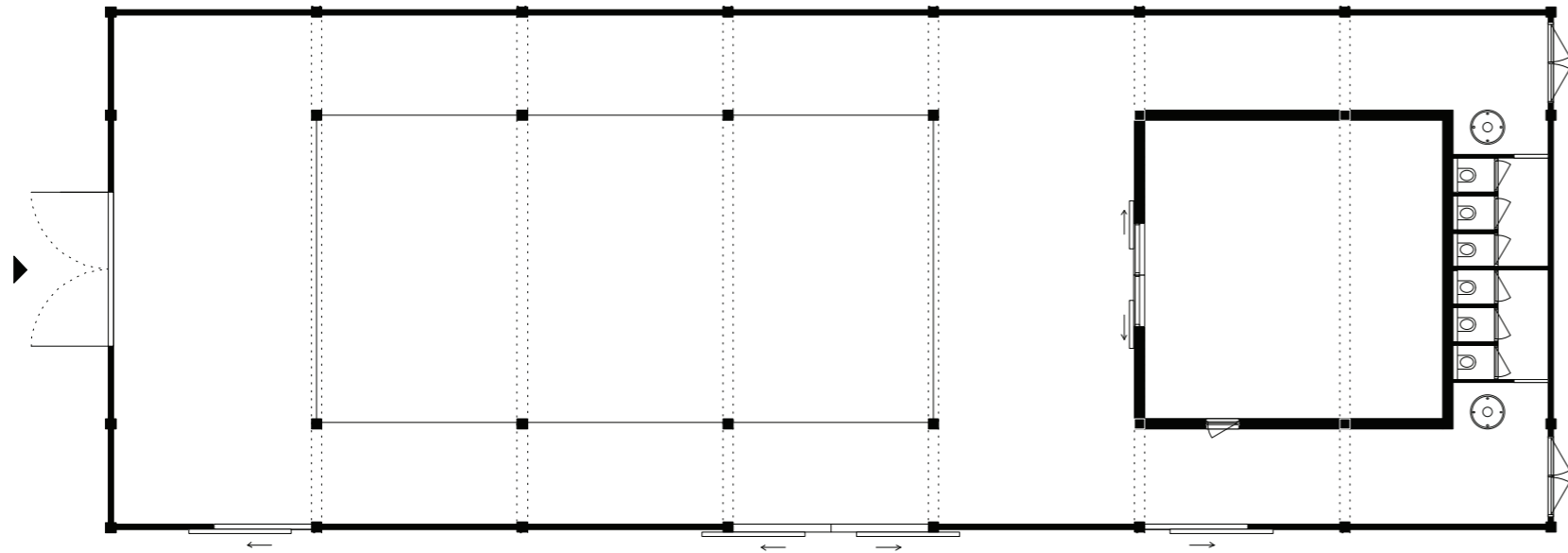


The Barn



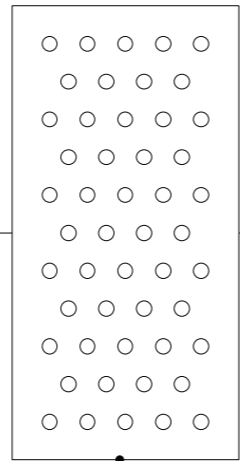
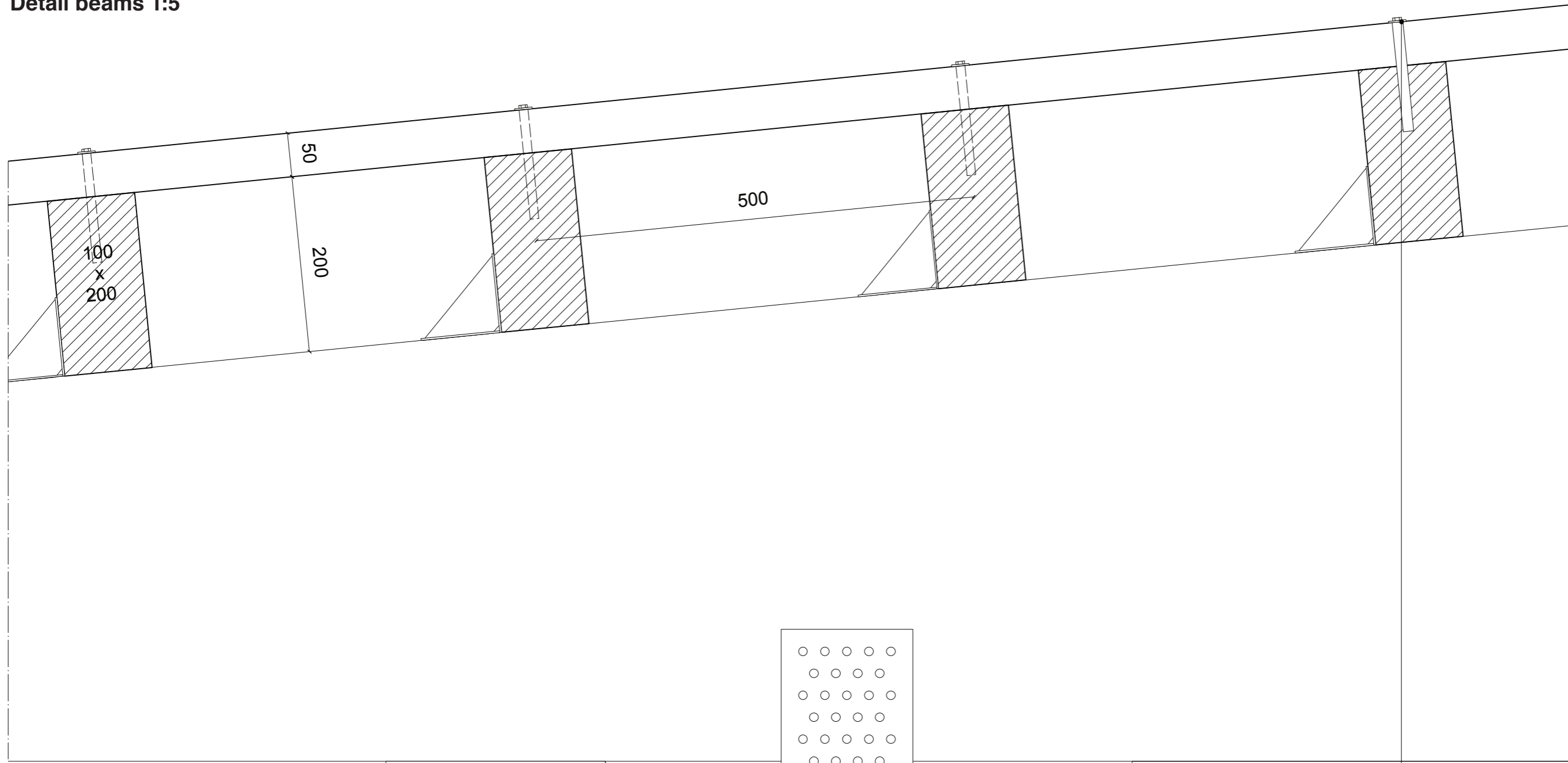
The Barn
Workshop





The Barn

Detail beams 1:5



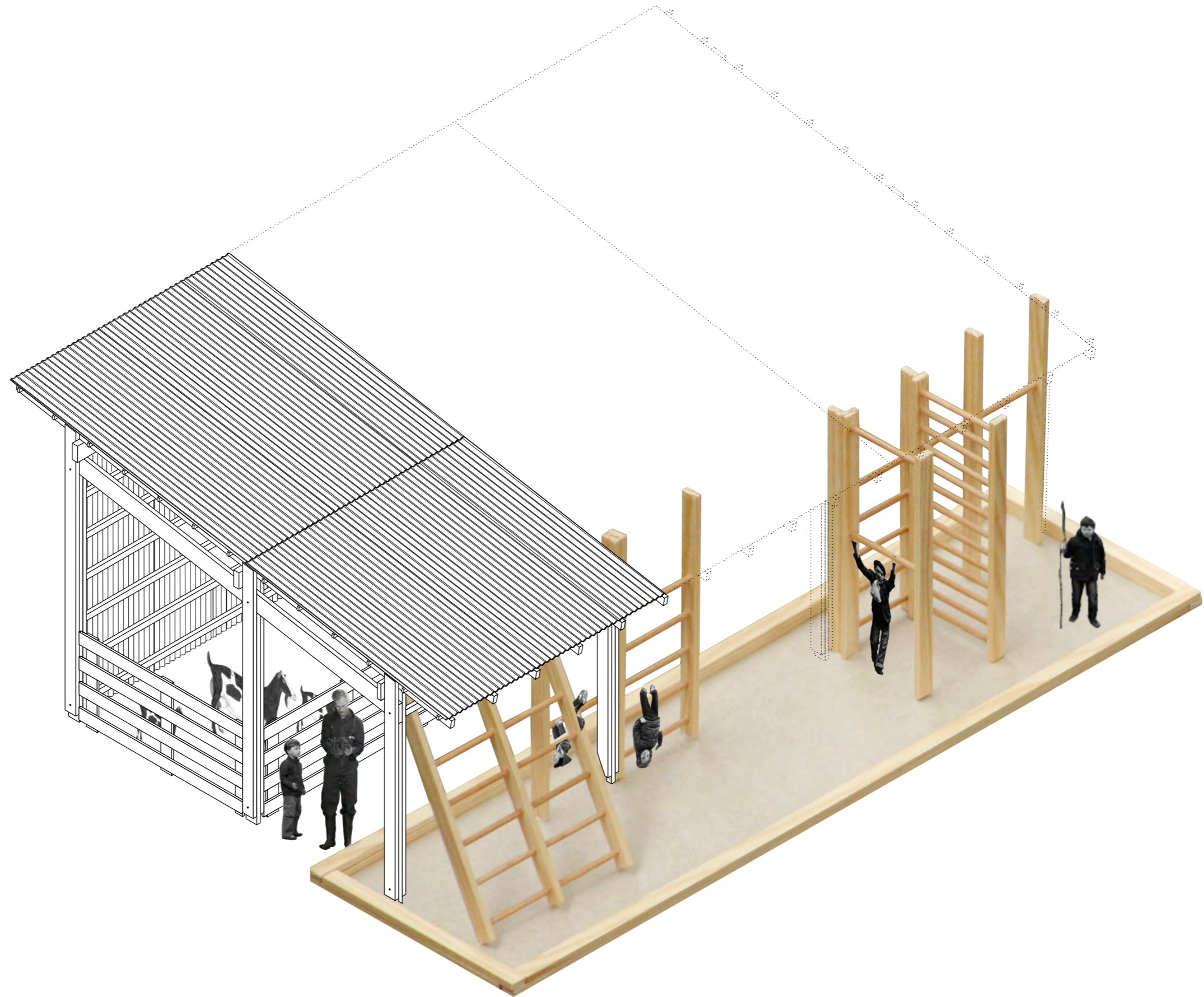
- Roof construction
 - Corrugated steel, attached with thread screws
 - Horizontal fendering, 500 mm spacing, connected to larch beams by tilting fillets
- Nail plate joint
- Larch beams
 - 350 mm thickness, tapered legs and saddle roof
- Metal angled profile

The Shed



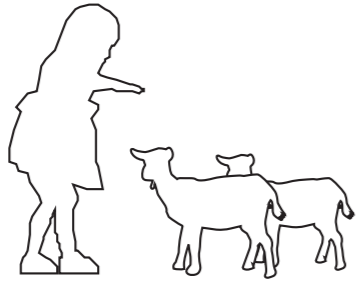
The Shed

Climbing



Educative program

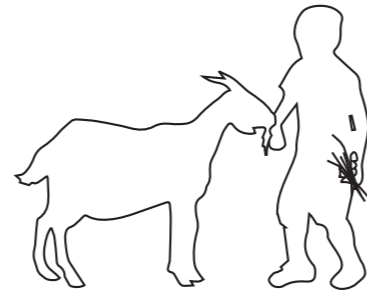
NURTURING



GROUP 1 + 2

lambs need a lot of attention in order to get domesticated

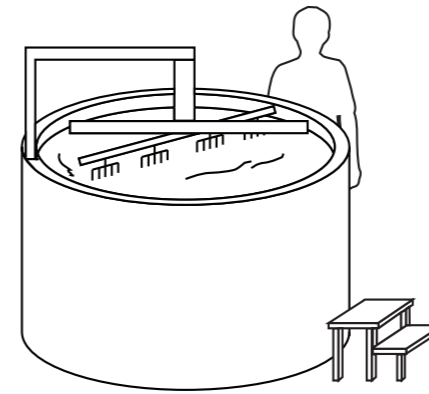
RUNNING A FARM



GROUP 3 + 4

helping the farmer milking in the morning, feeding in the afternoon and guiding towards the day

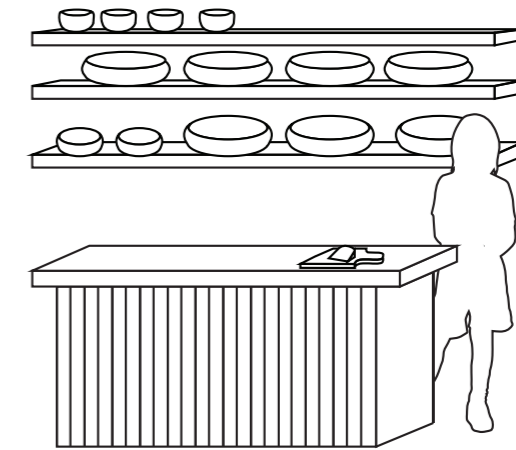
MAKING CHEESE: A CRAFT



GROUP 5 + 6

a look in the kitchen of the cheesemaker, helping to turn the cheese and inventarize

THE ART OF SELLING



GROUP 7 + 8

the cheese is sold in the farmers' shop in the front of the school



