

Enclosure of the giant galapagos tortoise

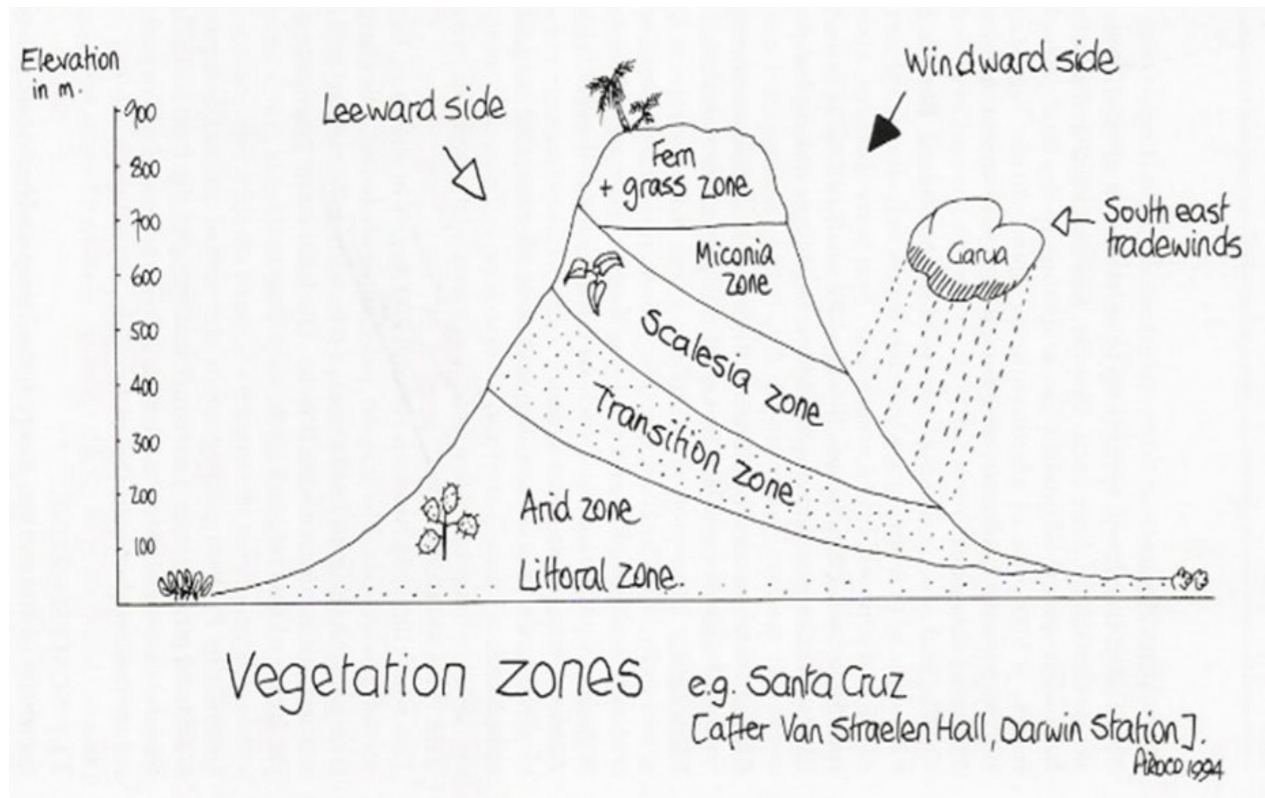
Victor van Nieukerken



## FACTS

- Galapago means tortoise in old spanish
- Biggest tortoise in the world
- Can grow 100+ years old  
(Oldest known specimen between 150-255 y.o.)
- Can grow more than 1,5m length
- Endangered species





The tortoise migrates in between the 3 lower zones



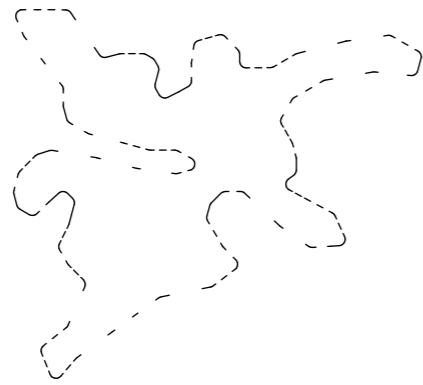
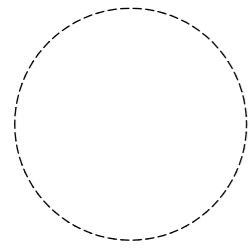
Scaesia zone



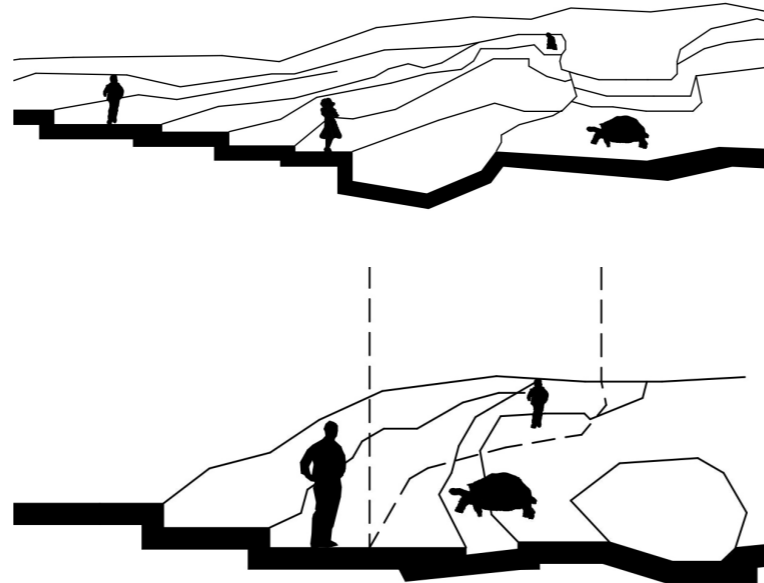
Arid zone



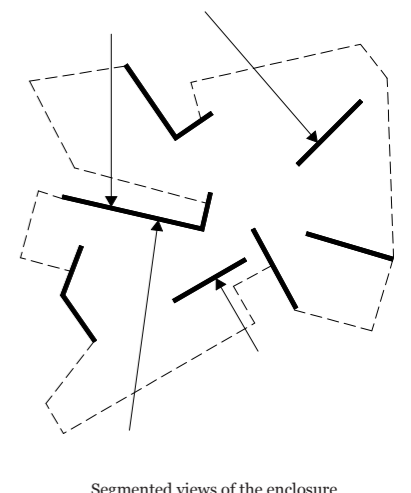
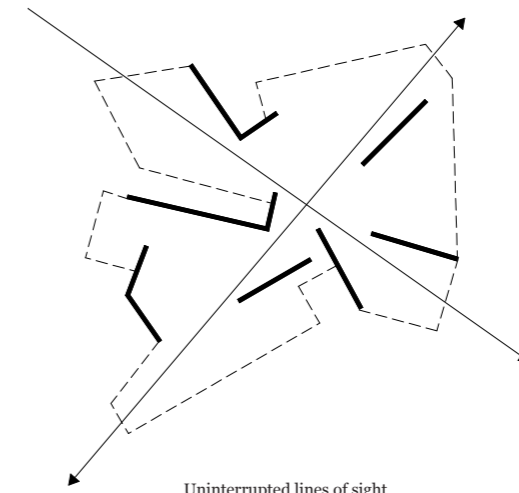
Transition zone



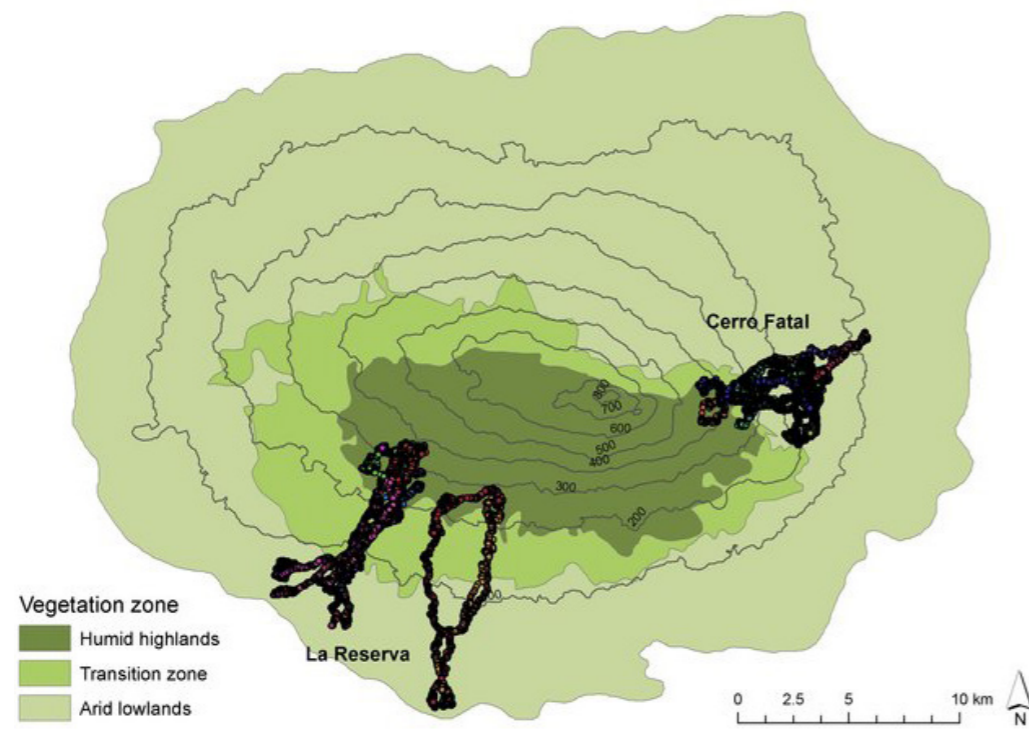
Imitating the stretched out landscape of the tortoise



Ambiguous boundaries between human and tortoise



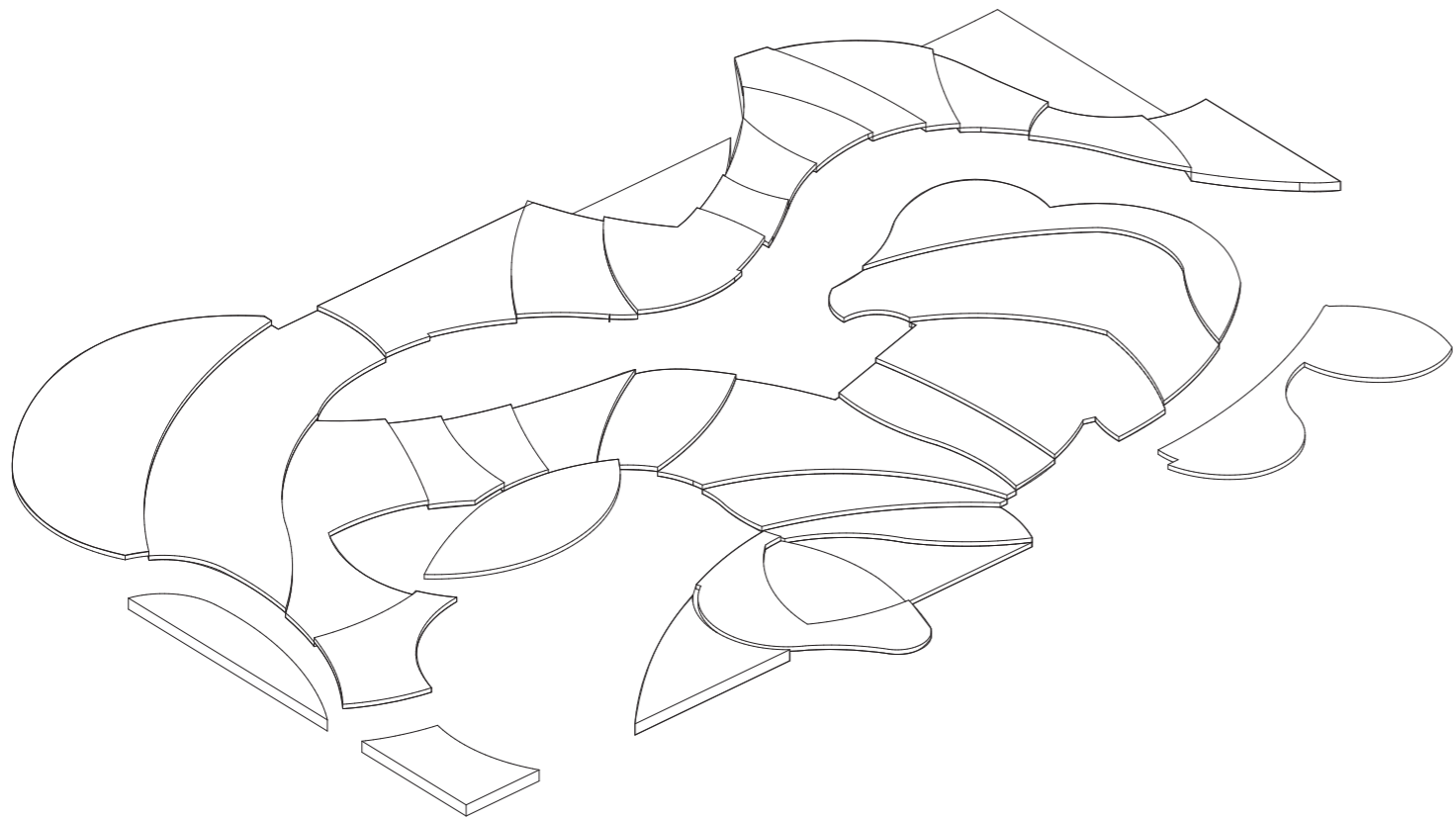
Segmenting the landscape



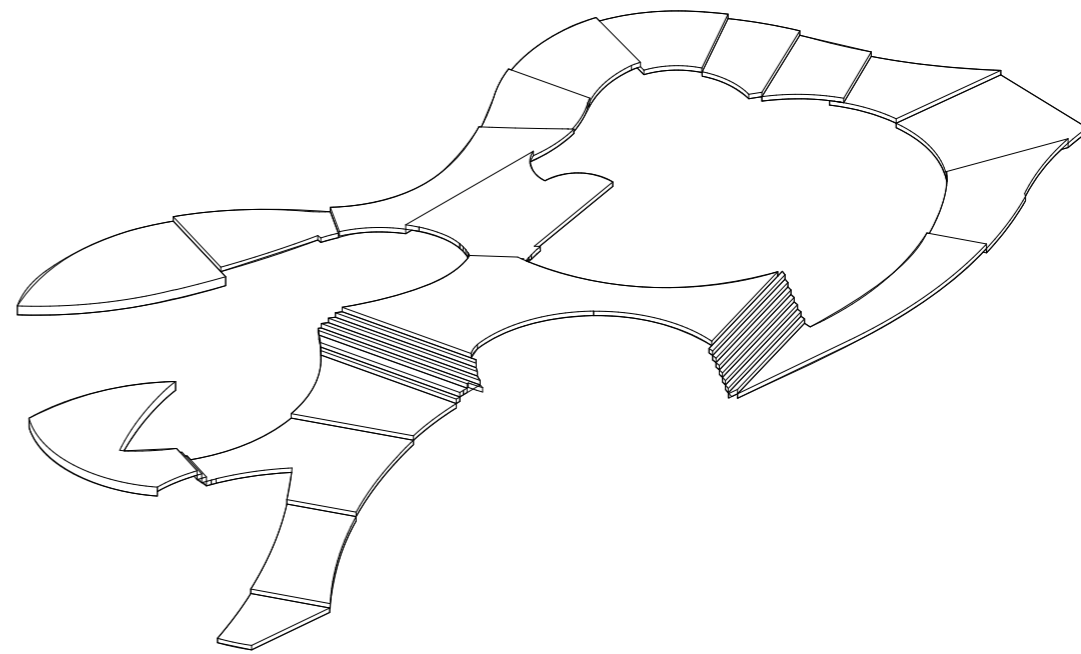
Migration



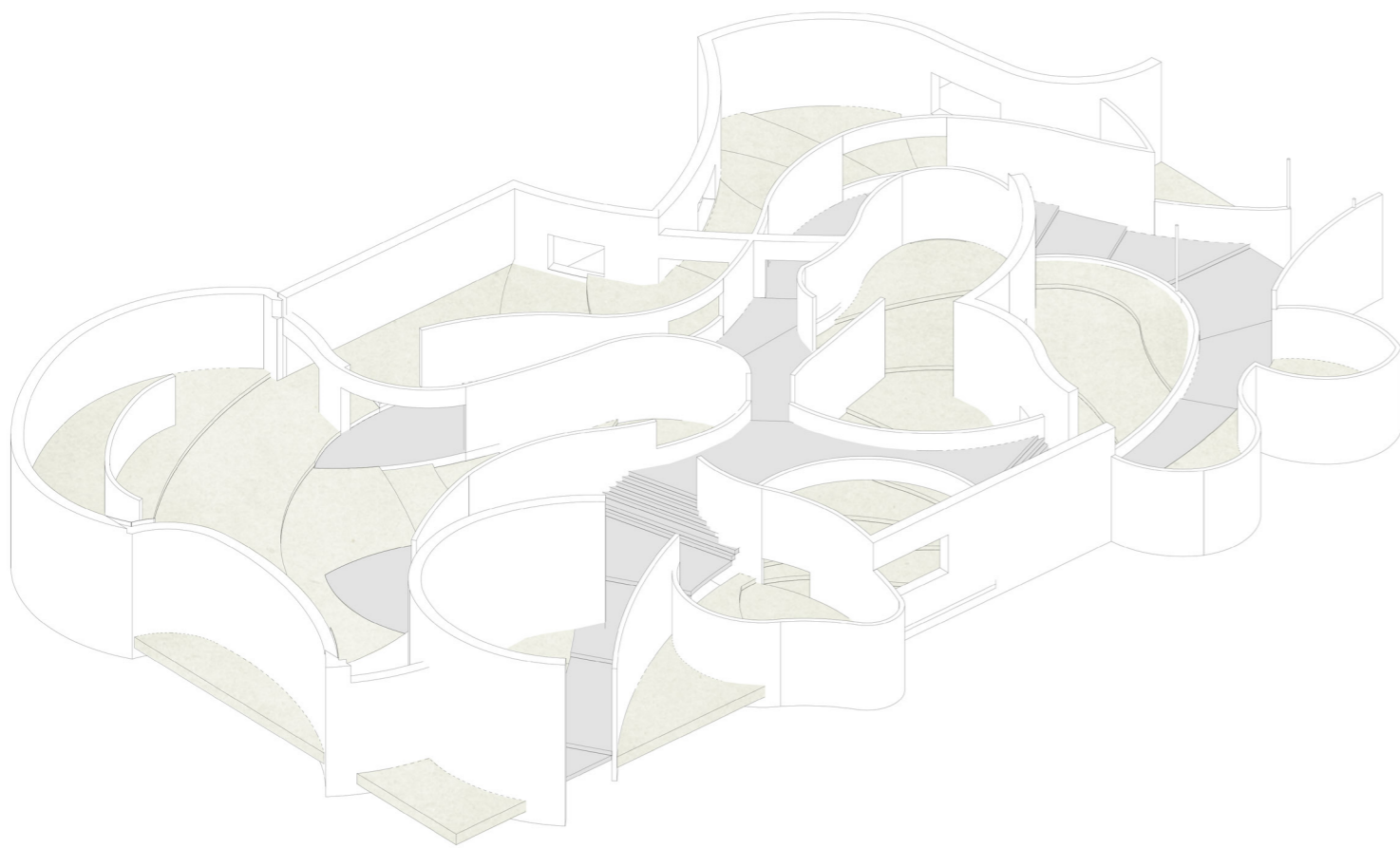
Breeding



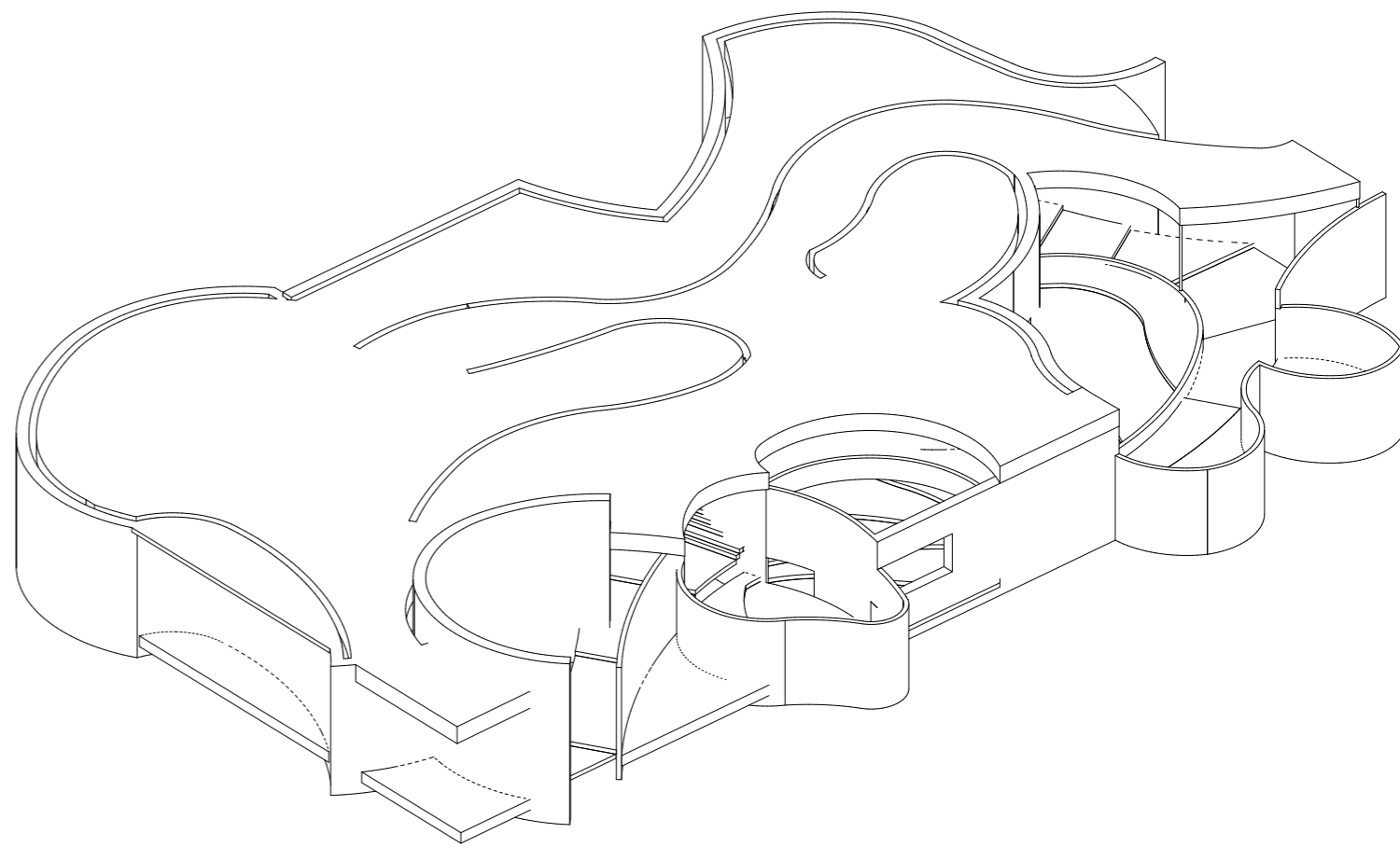
Landscape of the giant tortoise



Path of the visitor



Distribution of spaces



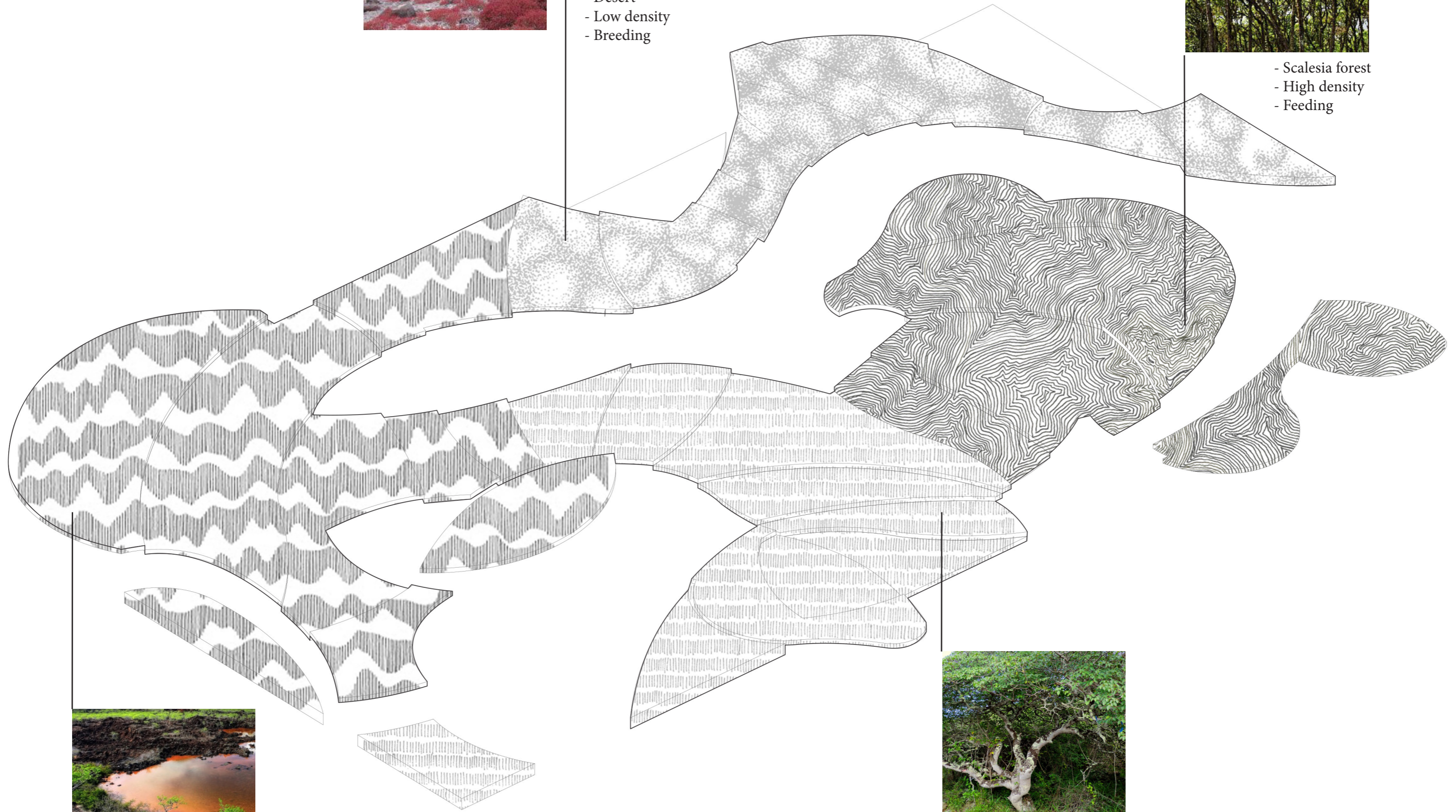
Inside & outside



- Desert
- Low density
- Breeding



- Scalesia forest
- High density
- Feeding

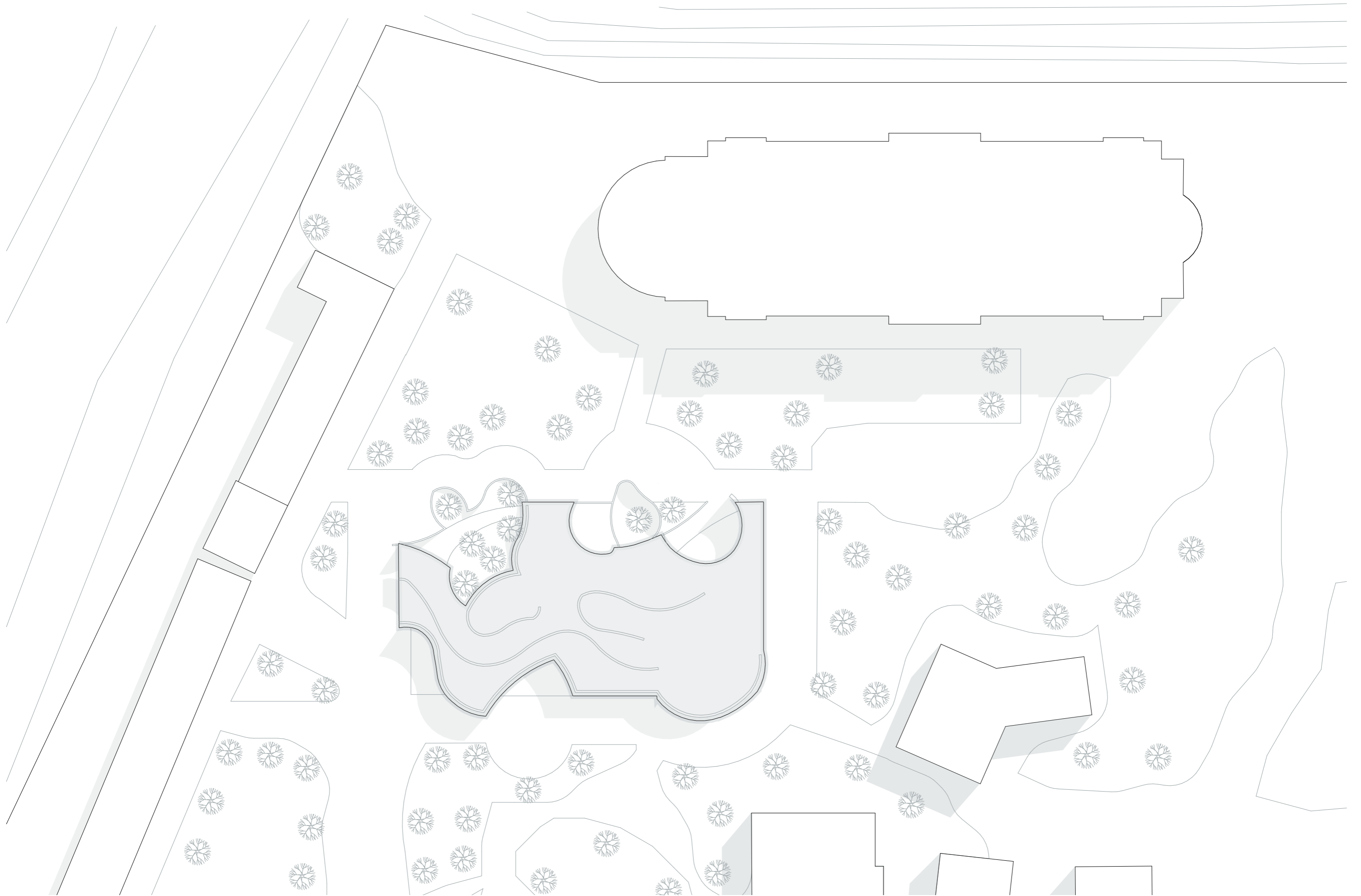


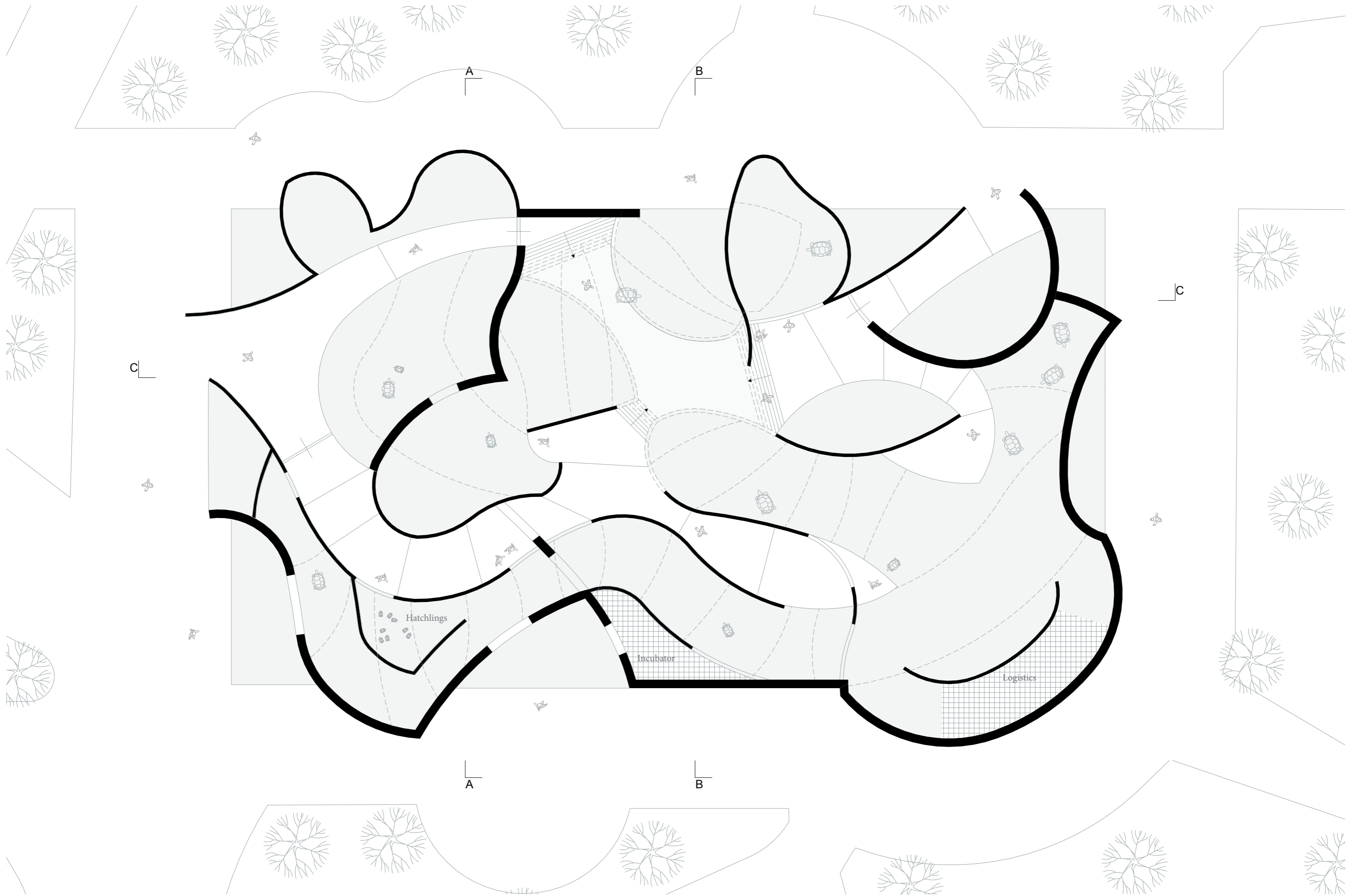
- Coastal zone
- Low density
- Resting



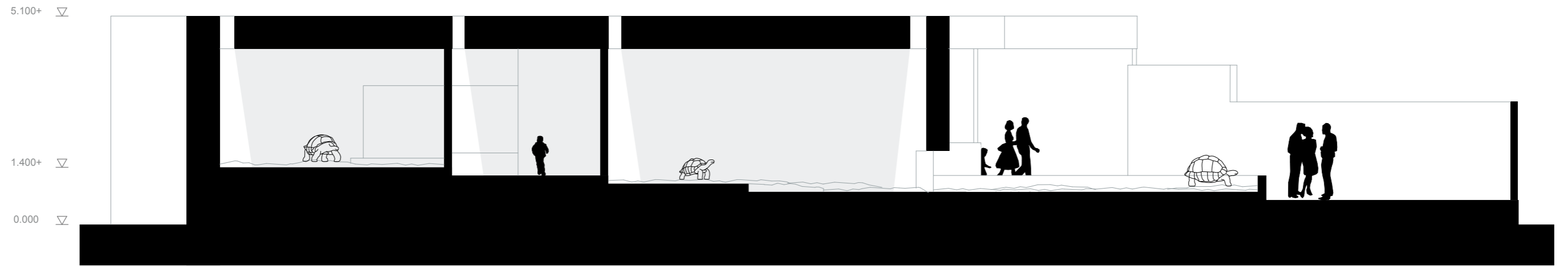
- Arid/transition zone
- Medium high density
- Resting

Landscaping elements

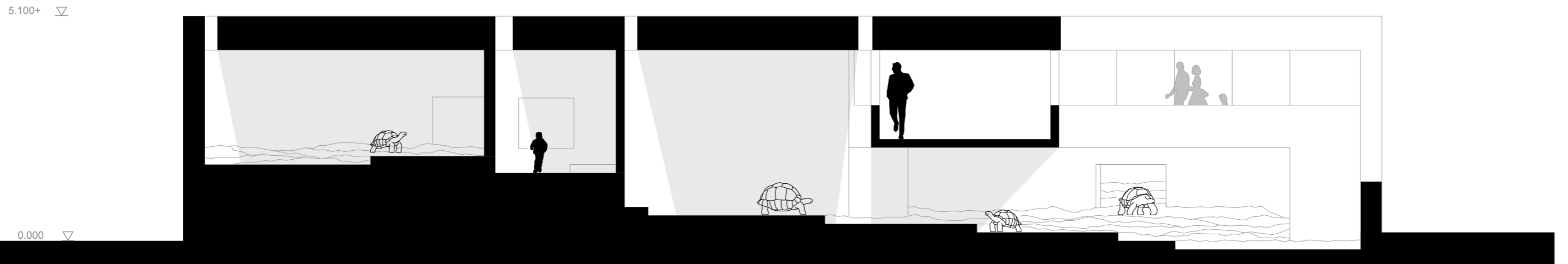




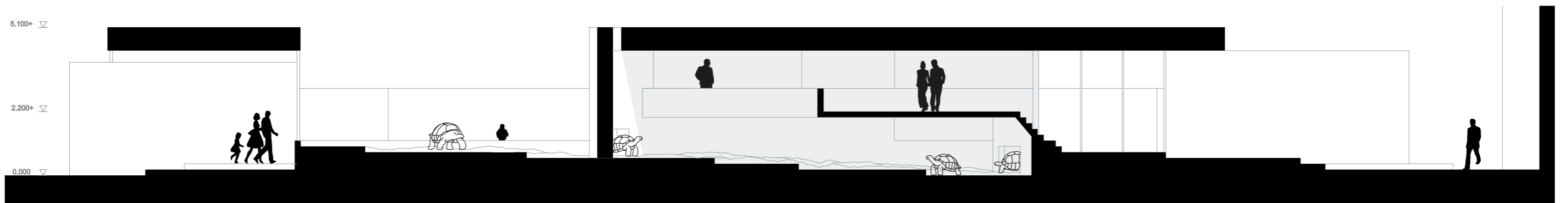




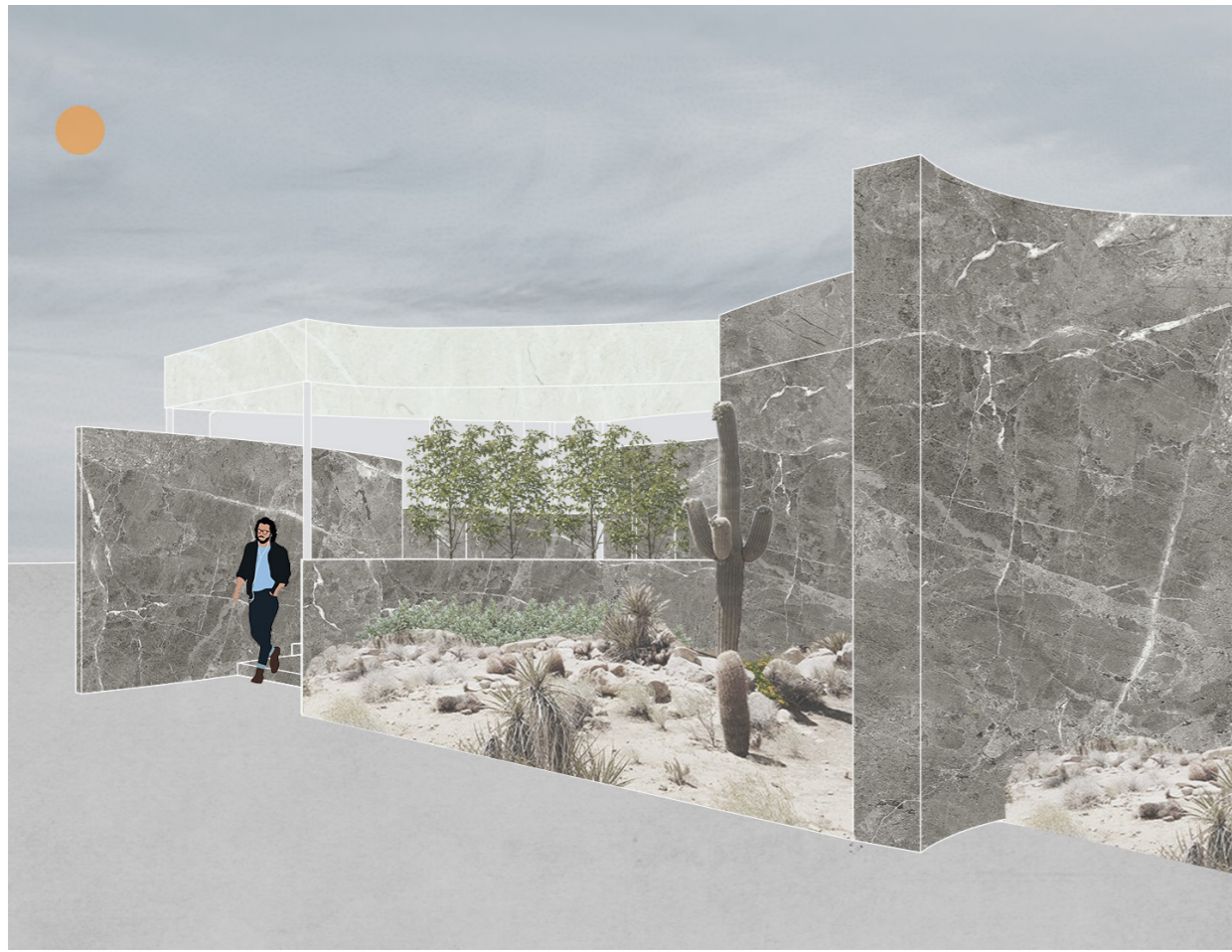
Section AA



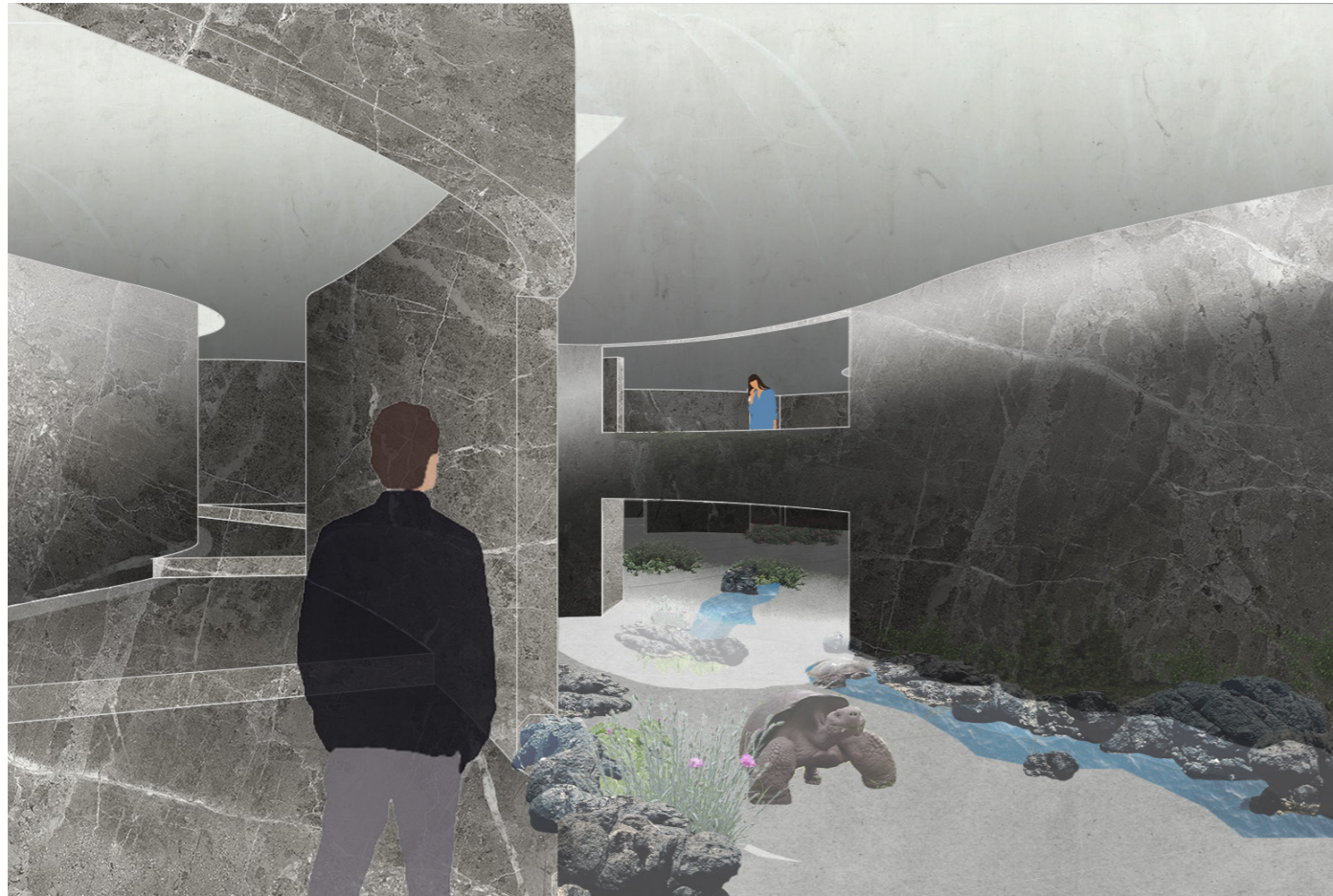
Section BB

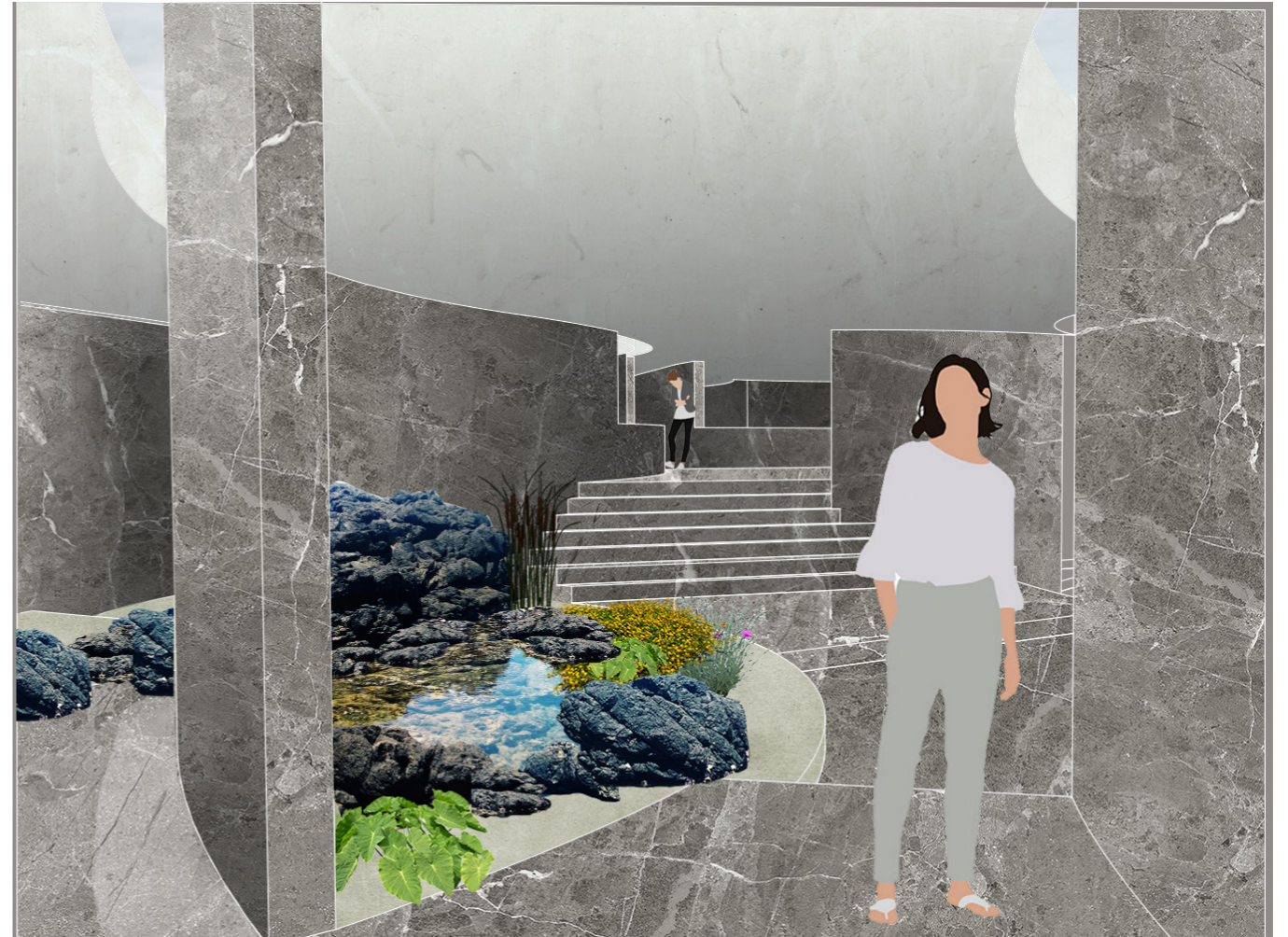


Section CC



Impressions









Fragmented landscape



Dream



Kids

Narration



With love