

An aerial photograph of a coastal residential development. The image shows a mix of residential buildings, green spaces, and recreational areas. In the foreground, there's a large, dark, irregularly shaped area that could be a forest or a large garden. To the right, there's a large, light-colored area that looks like a golf course or a large open field. Several wind turbines are visible in the landscape. The overall scene is a blend of urban planning and natural environment.

# ZELFVOORZIENEND WONEN EN RECREËREN

DAT KAN IN DE BANJAARD

SASKIA TE WOERD | 0909035 | STEDENBOUW

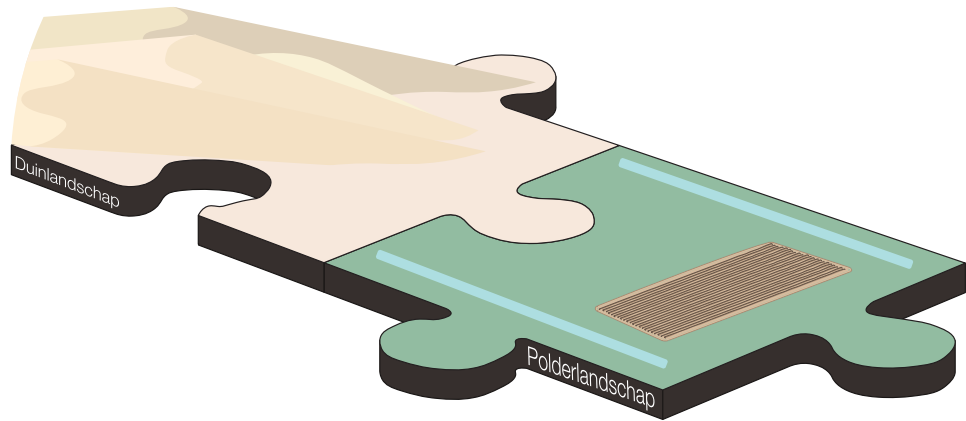


# DE BANJAARD





# CONCEPT



Landschappen verbinden

## ARBEIDSMIGRANTEN



## RECREANTEN

Woningen voor arbeidsmigranten als recreanten



Voedselproductie (zelfvoorzienend)

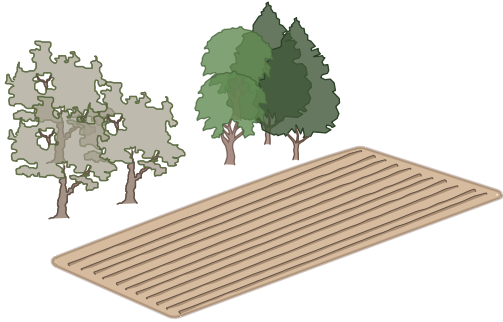


# HOEVEEL LAND OM ZELFVOORZIENEND TE ZIJN

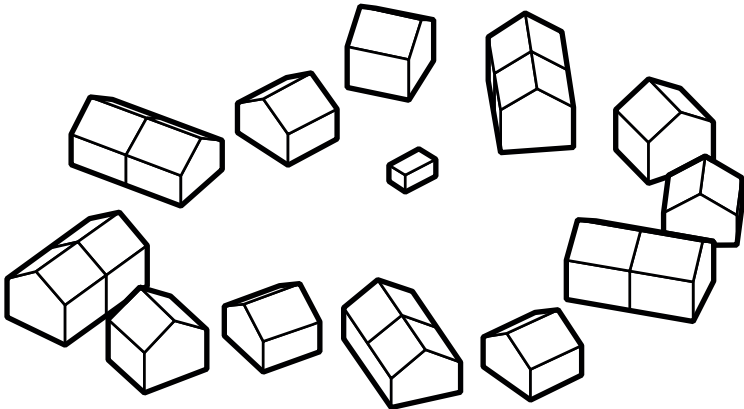


1 huishouden

=



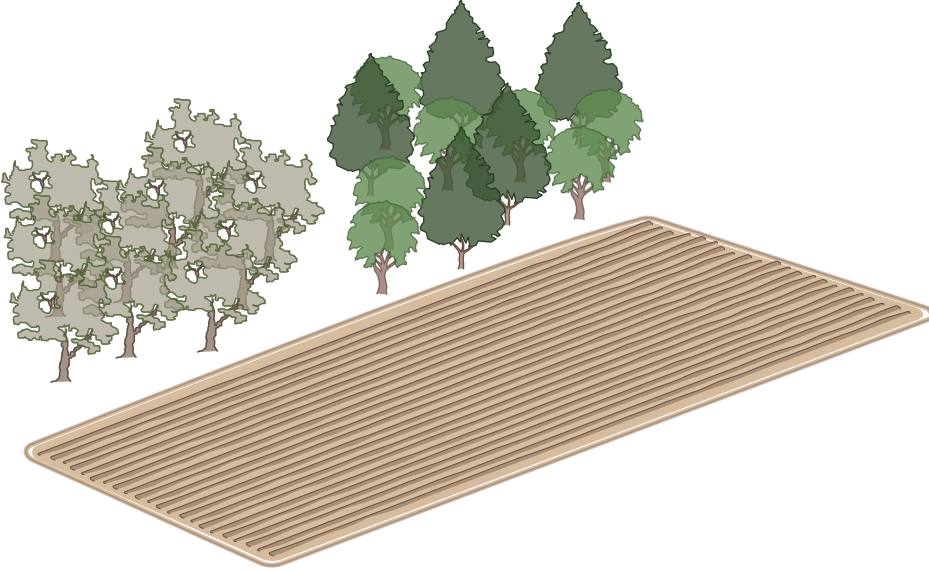
320 m2 verbouwingsgrond per jaar



157 woningen

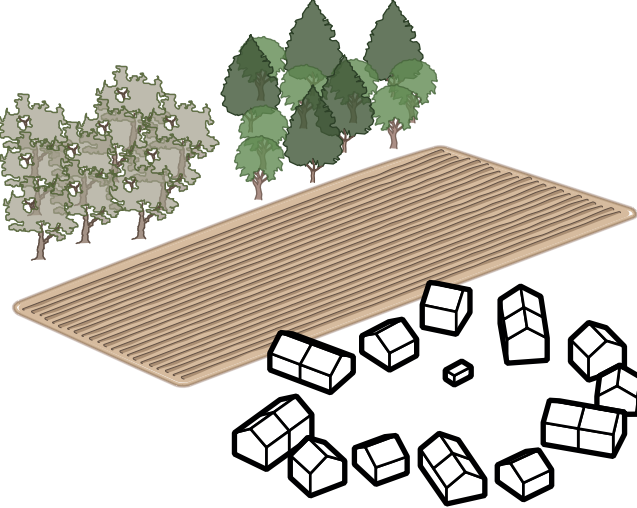
132 woningen + 50 tijdelijke woningen

+



53.308 m2 verbouwingsgrond per jaar

=



50.240m2 voor de woningen per jaar  
3.308 m2 commercieel per jaar

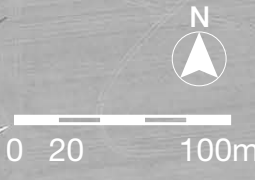


# HET PLAN



Google Earth

Google Earth



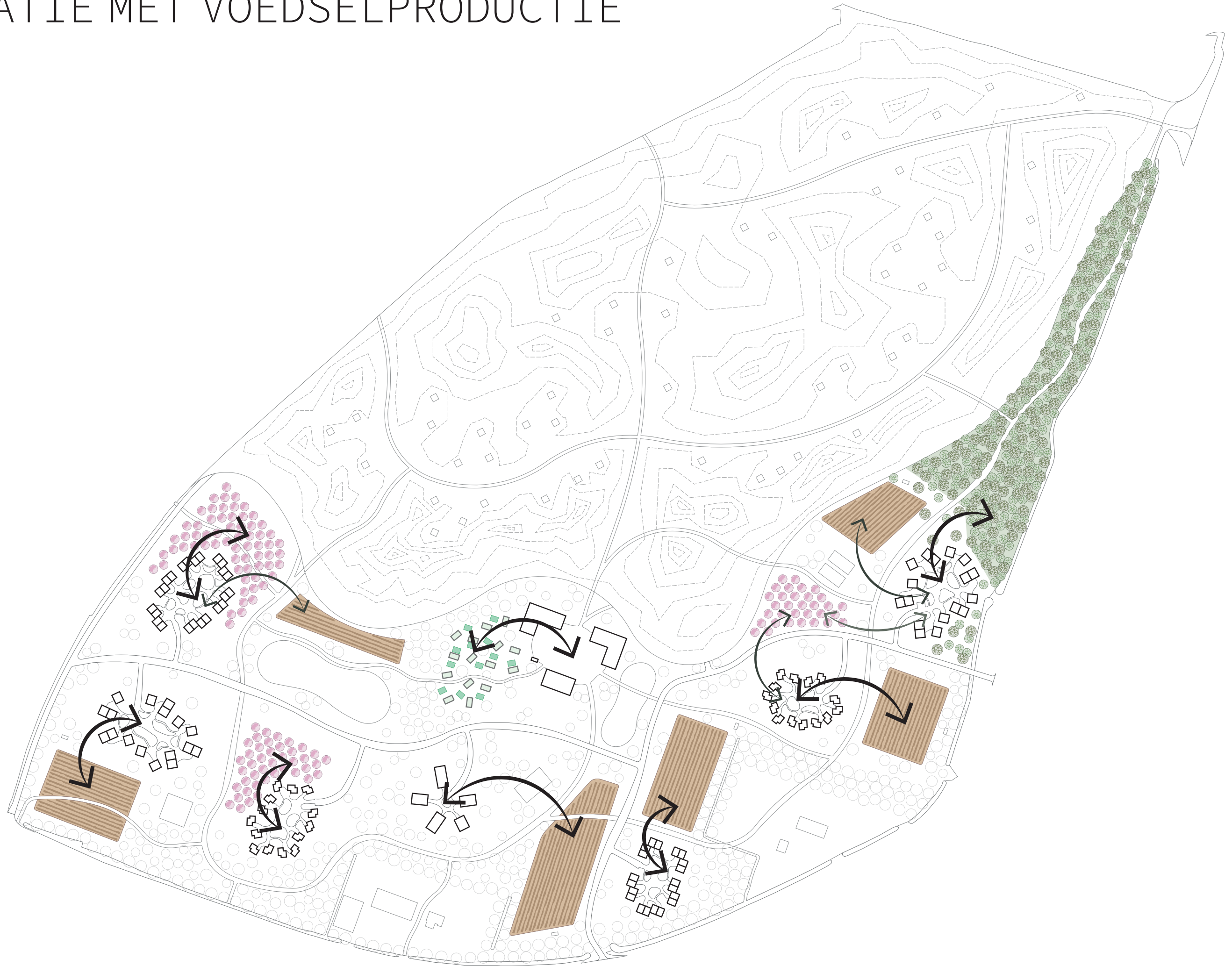


# PASSEND IN DE OMGEVING



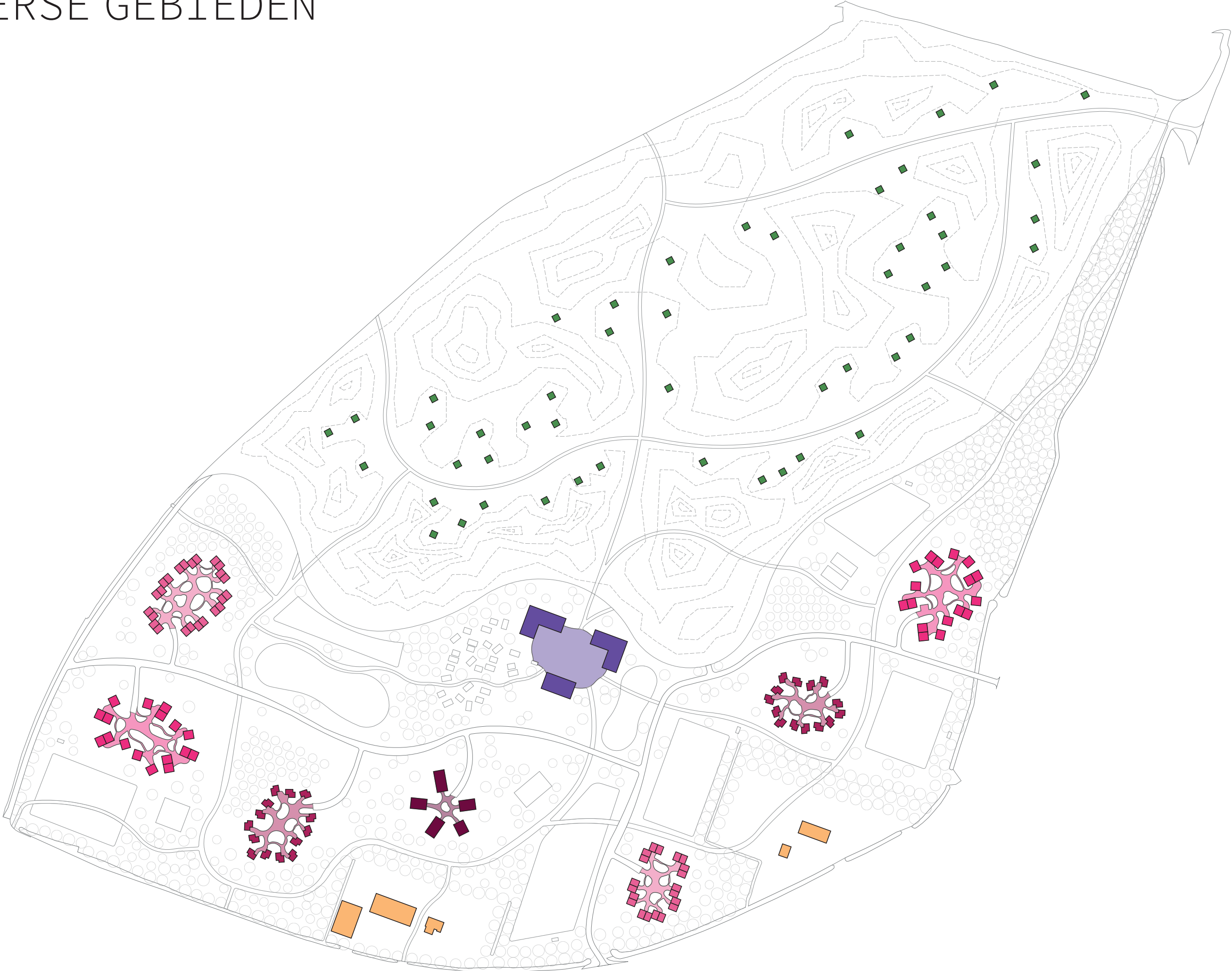


# RELATIE MET VOEDSELPRODUCTIE



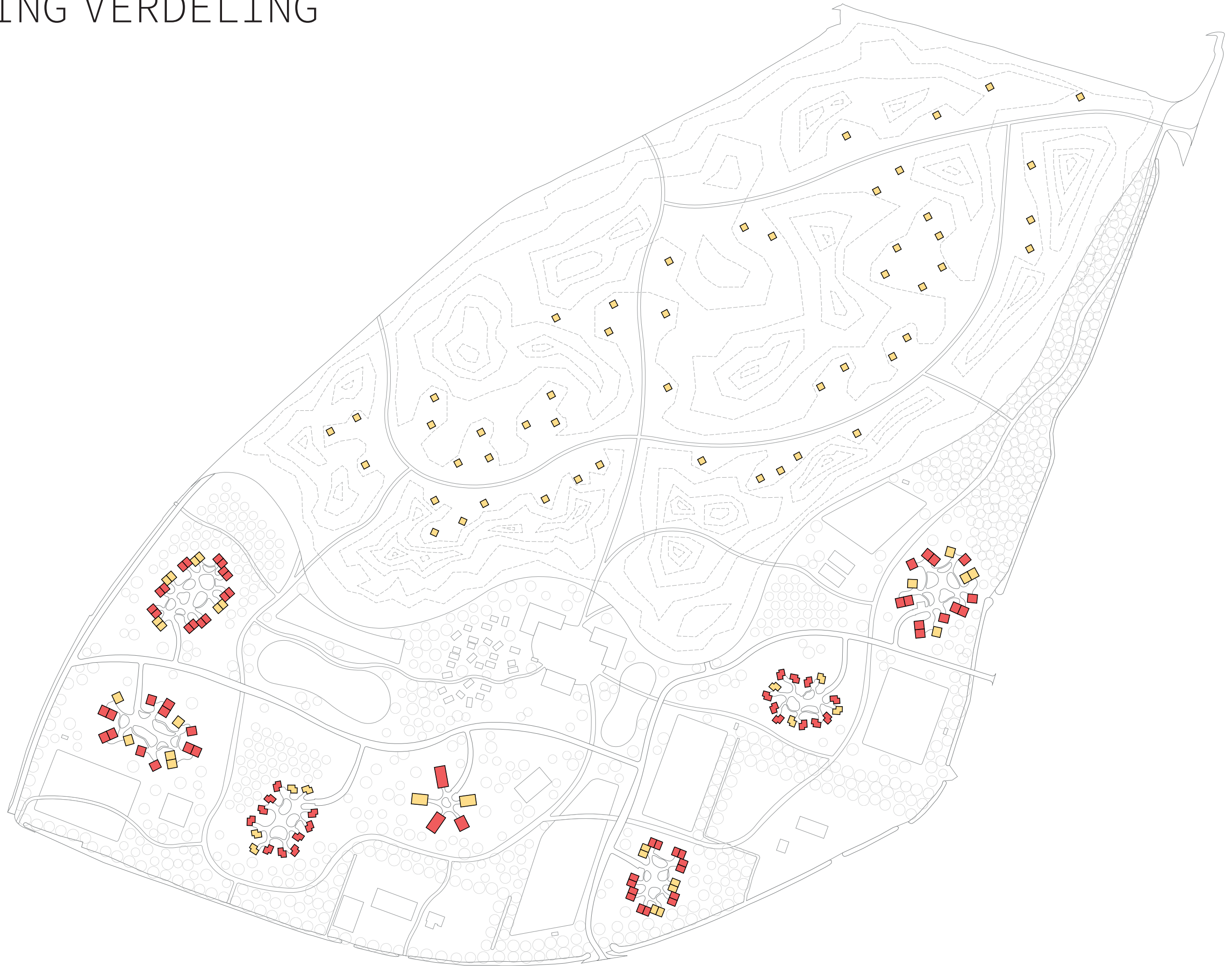


# DIVERSE GEBIEDEN



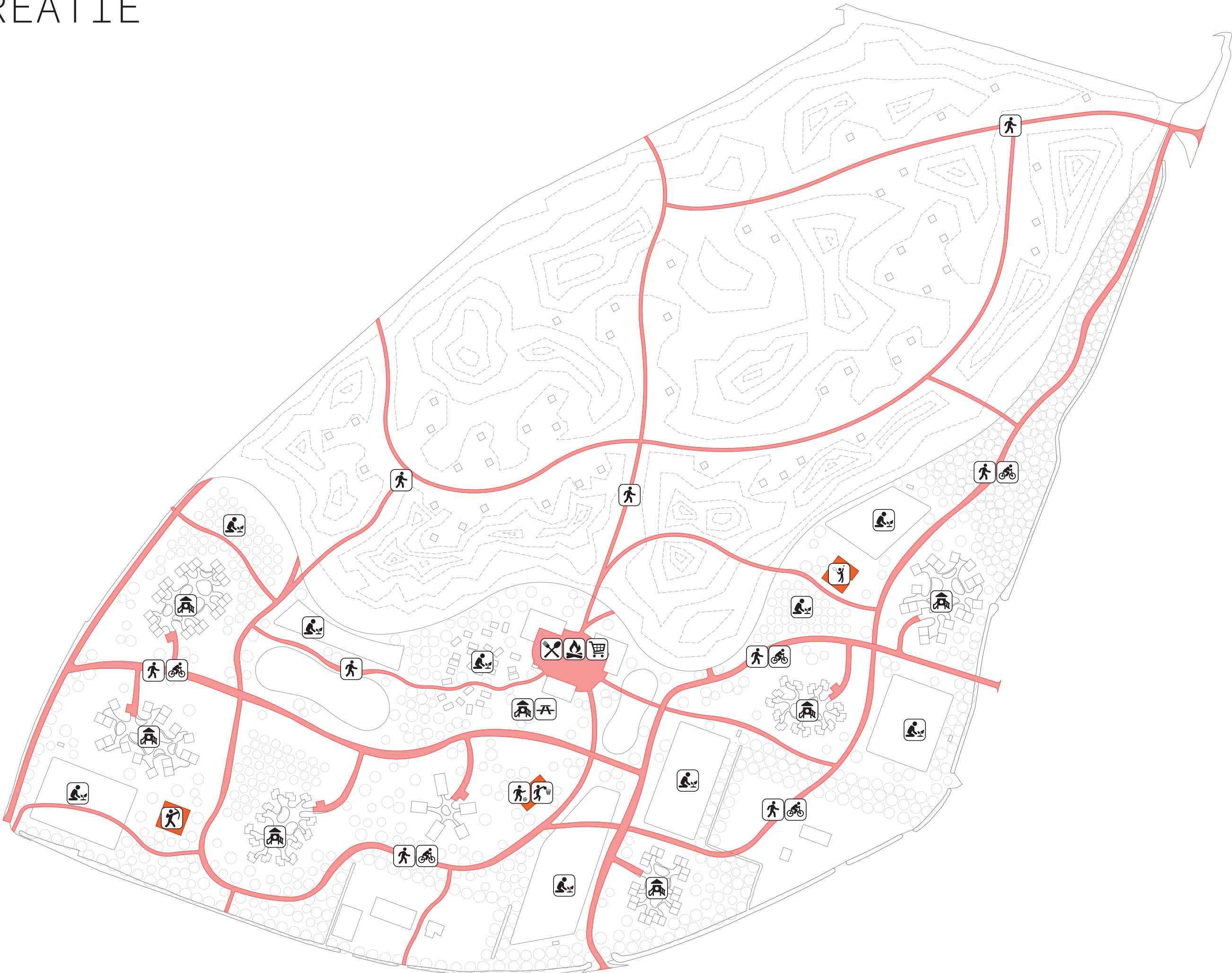


# WONING VERDELING



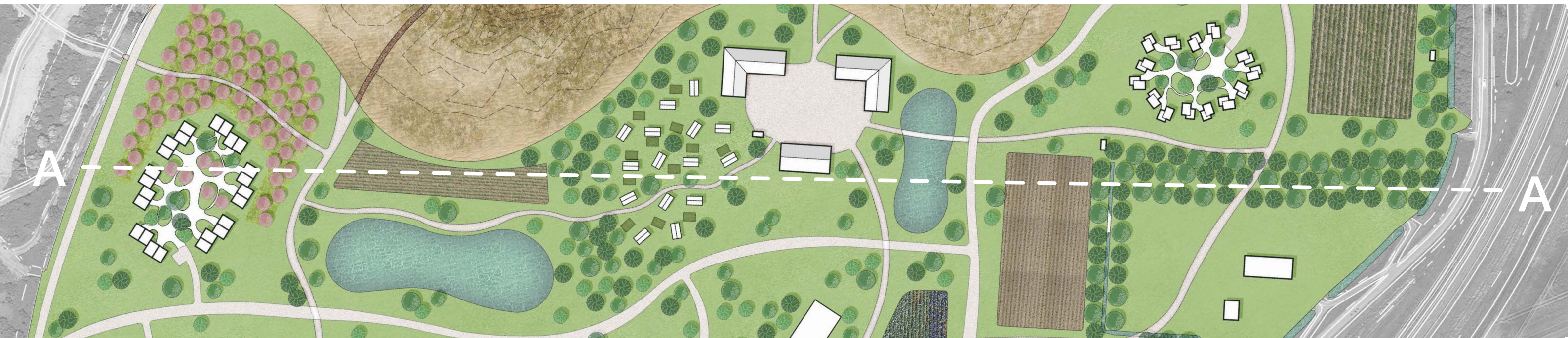


# RECREATIE



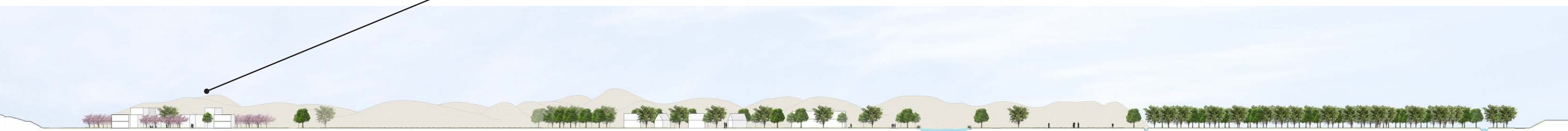
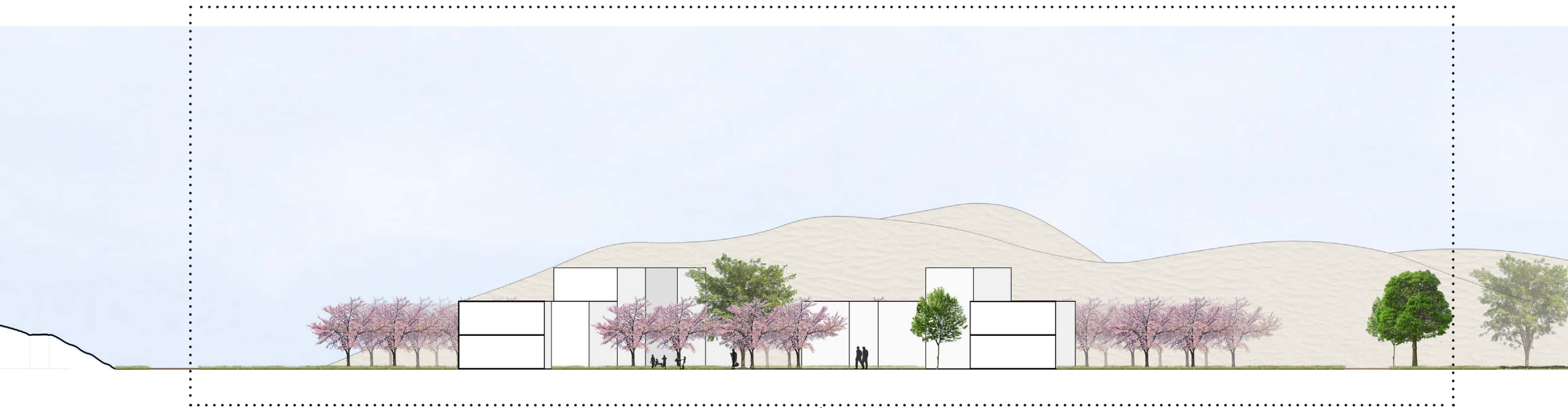


# GEHELE GEBIED



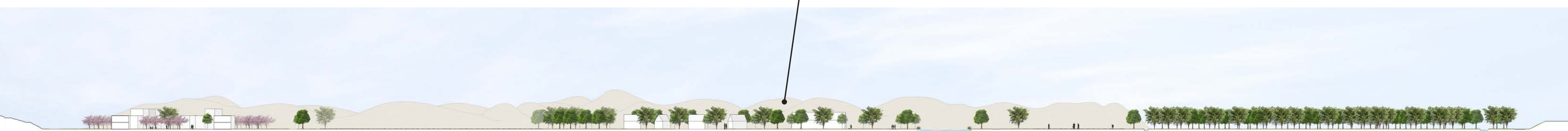
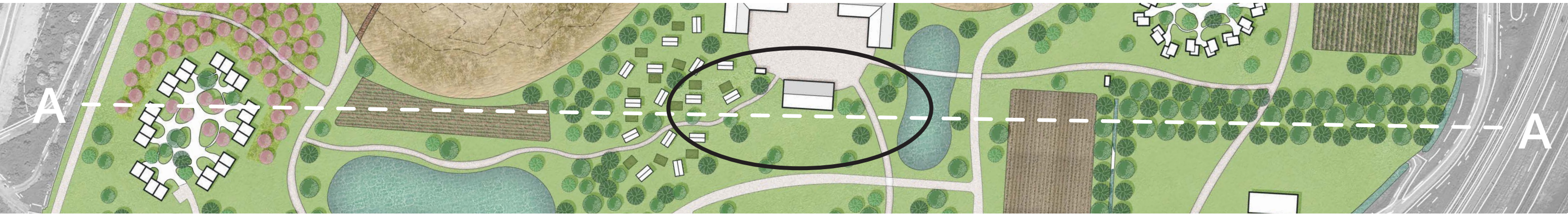


# CLUSTER AAN EEN BOOMGAARD



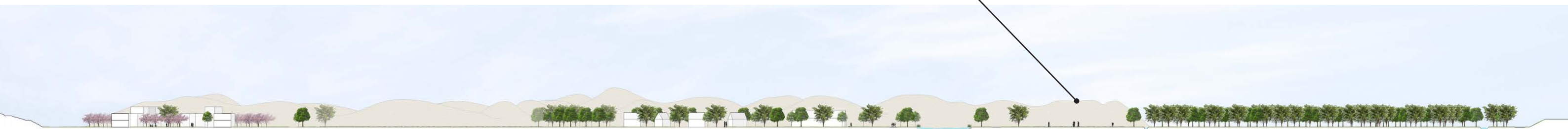
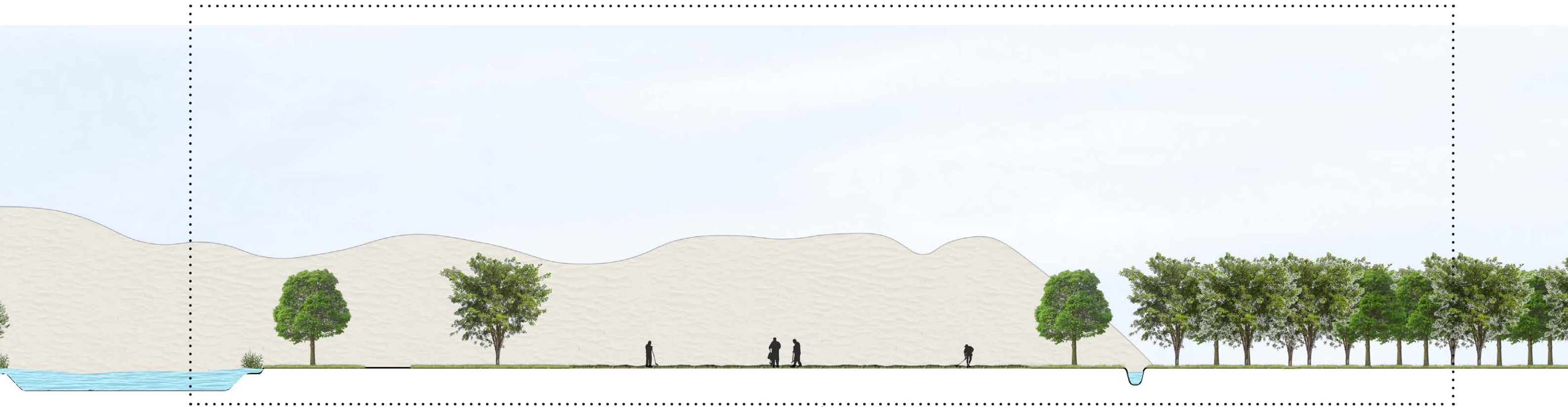


# HOOFDGEBIED





# AKKERLAND





# TIJDELIJKE WONINGEN



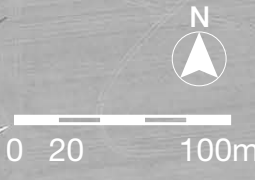


# TIJDELIJKE WONINGEN



Google Earth

Google Earth





# TIJDELIJKE WONINGEN – ZOMER





# TIJDELIJKE WONINGEN – ZOMER





# TIJDELIJKE WONINGEN – WINTER





# TIJDELIJKE WONINGEN – WINTER



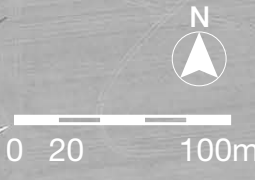


# CLUSTER



Google Earth

Google Earth



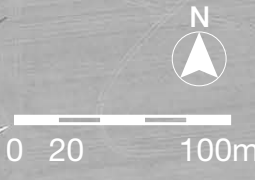


# CLUSTER



Google Earth

Google Earth



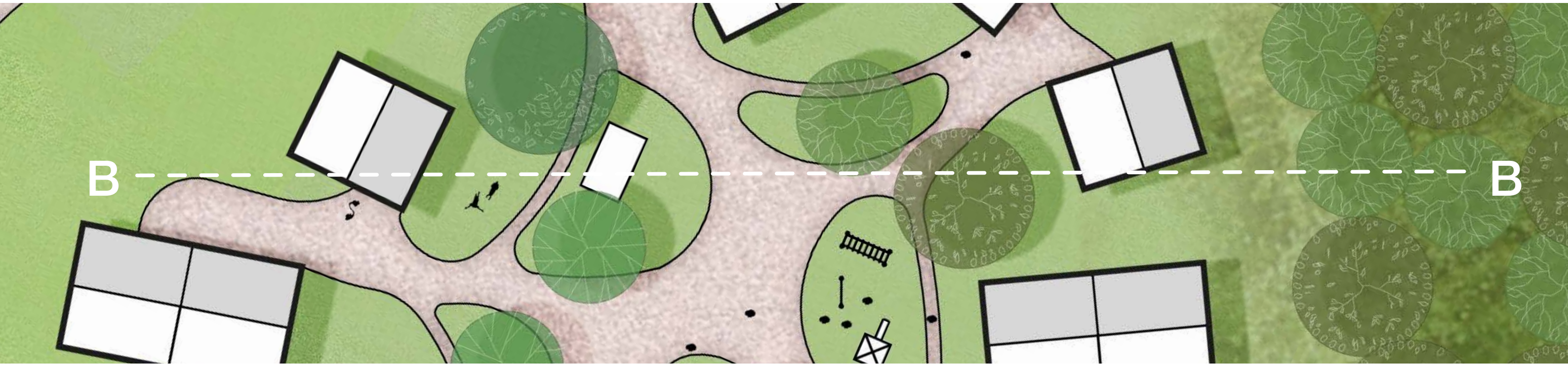


# CLUSTER – VOEDSELBOS



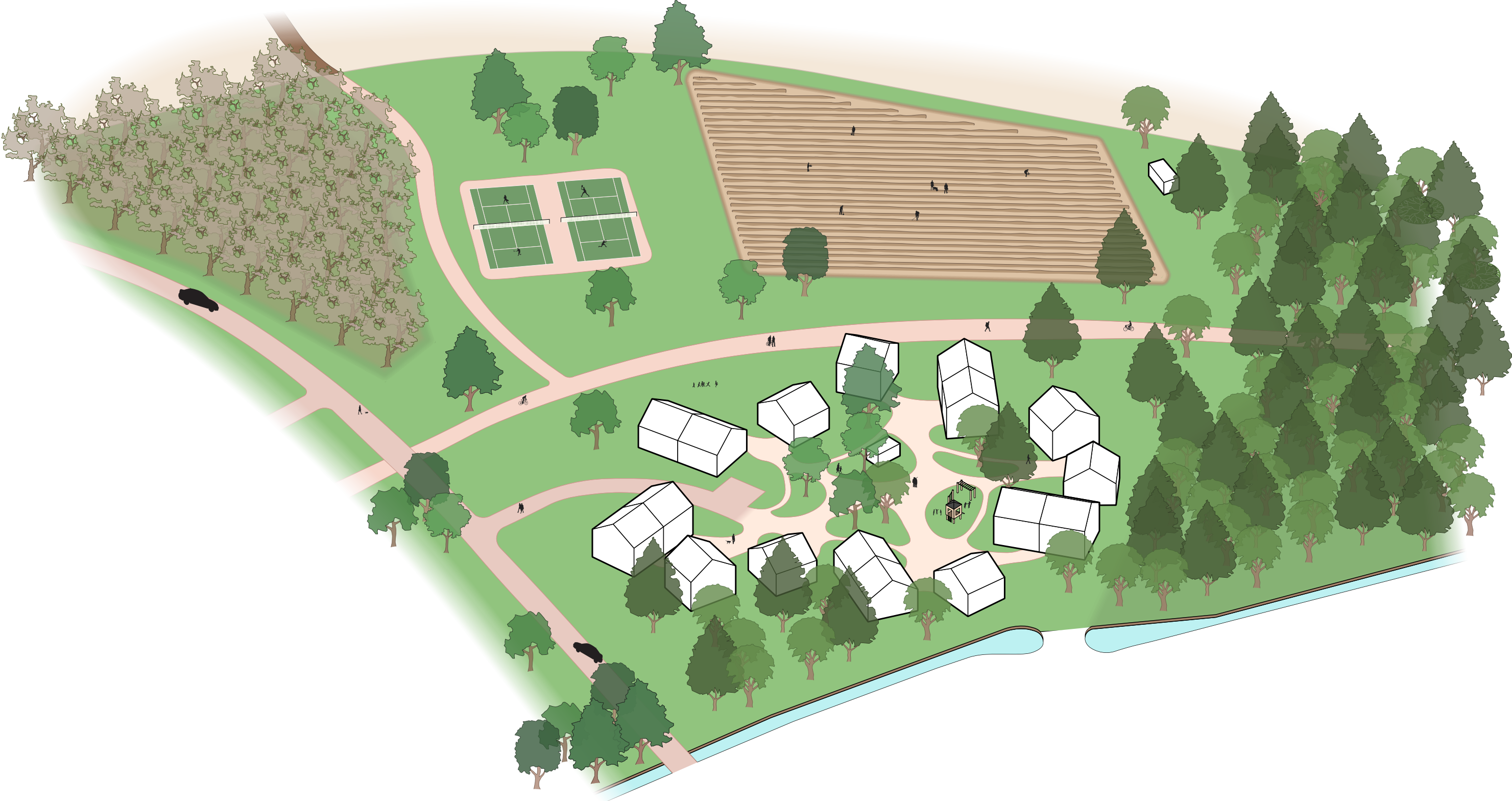


# RELATIE CLUSTER & VOEDSELBOS



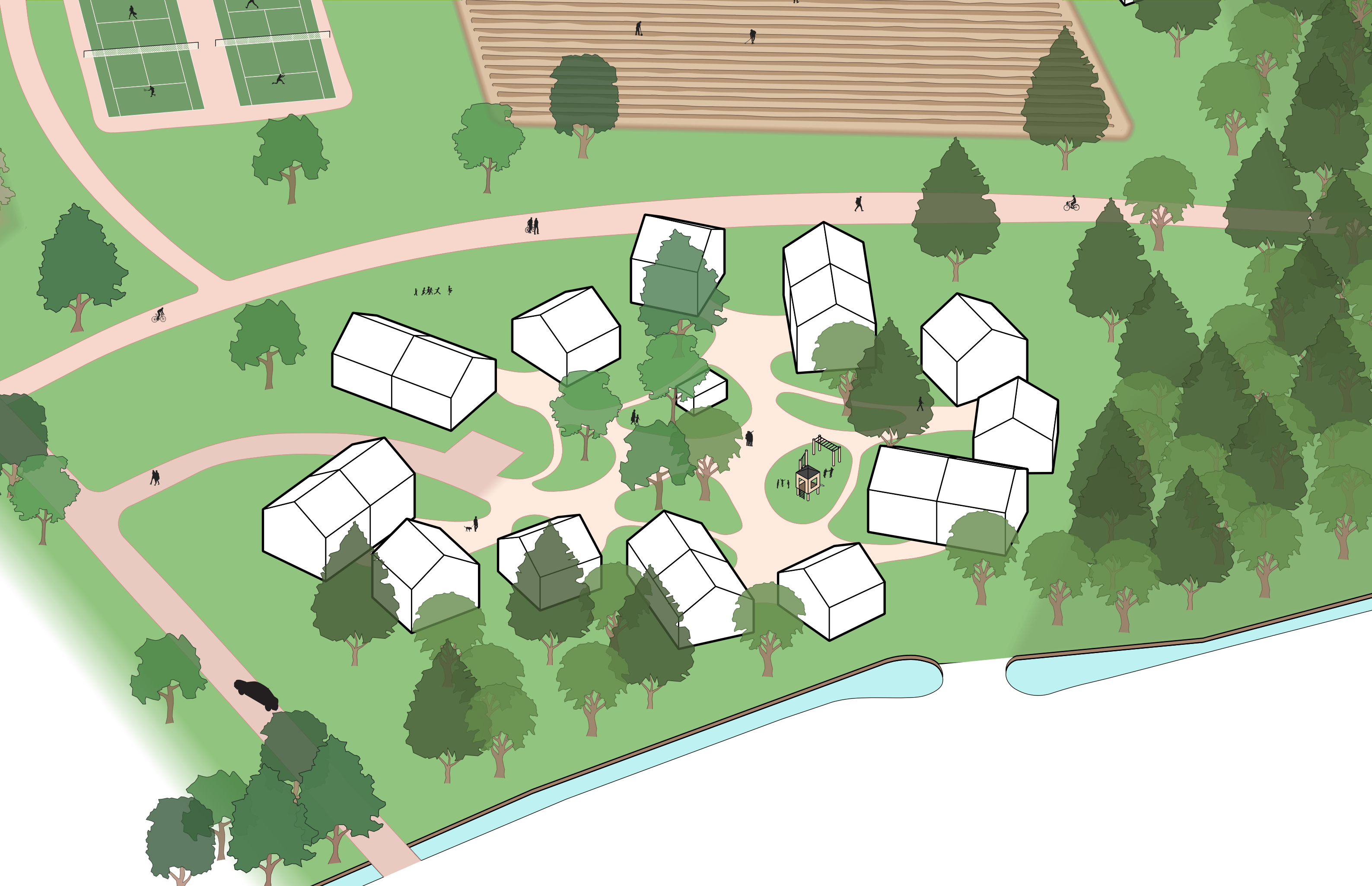


# CLUSTER – VOEDSELBOS





# VARIATIE IN DE BEBOUWING





# OPENBARE RUIJMTE





# OPENBARE RUIJITE – VOEDSELHOK



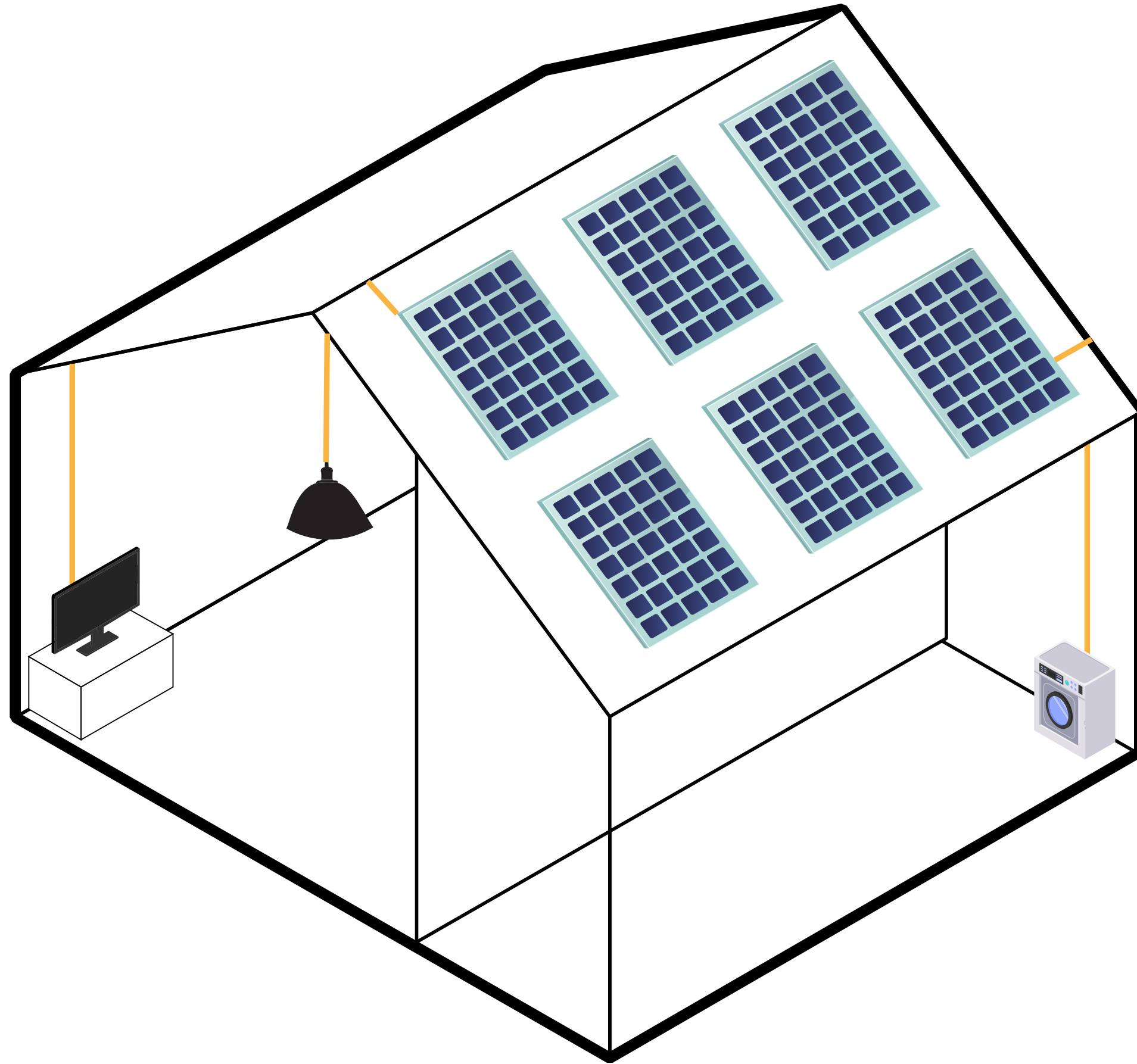


# WONINGEN ZELFVOORZIENEND



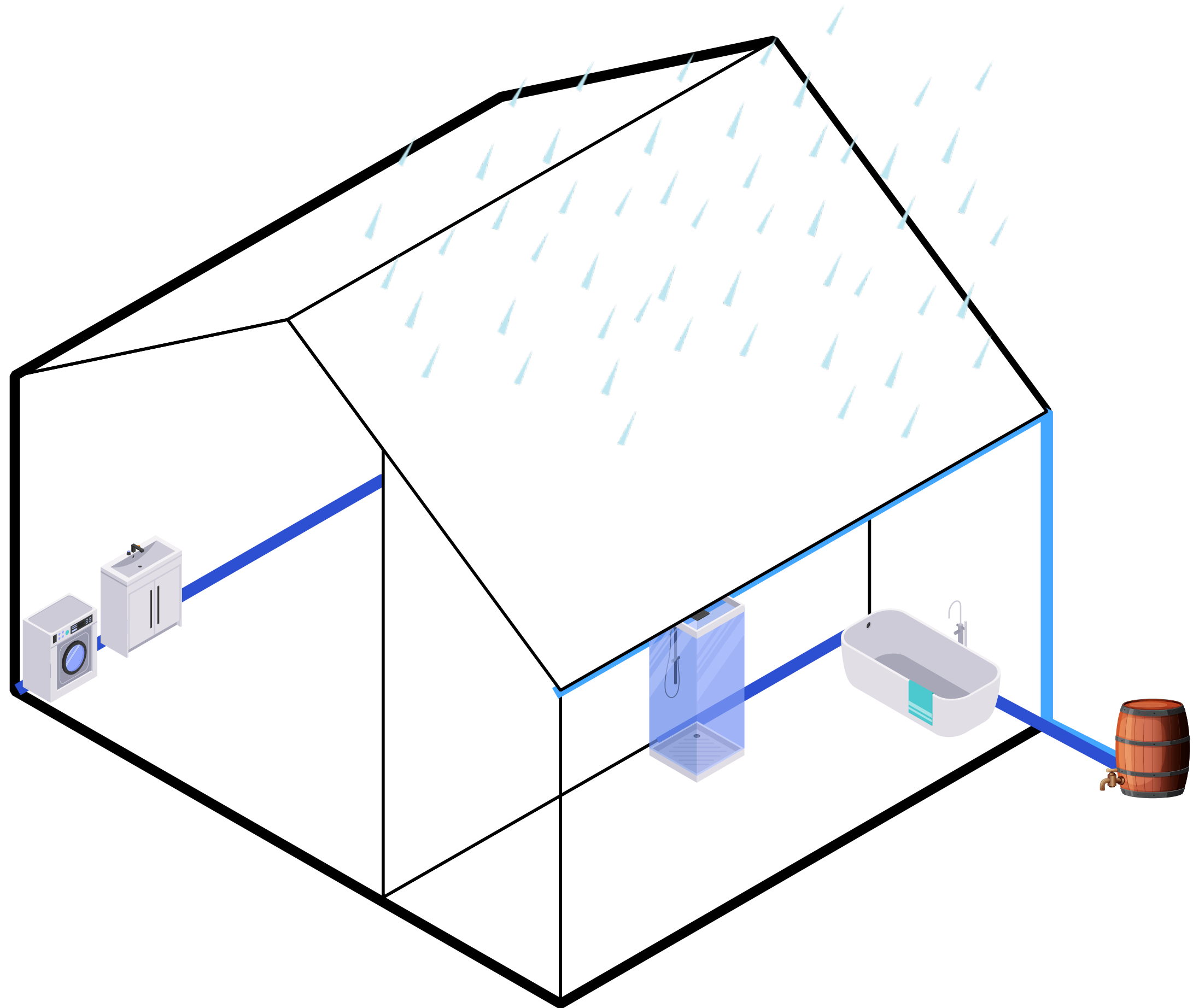


# WONINGEN ZELFVOORZIENEND – ENERGIE





# WONINGEN ZELFVOORZIENEND – WATER





An architectural rendering of a holiday park. The scene features several large, two-story wooden buildings with blue solar panels on their roofs. The buildings are surrounded by lush green trees and a well-maintained lawn. In the foreground, a paved path winds through the park, with several silhouetted figures of people walking, a person on a bicycle, and a dog. To the right, there is a small white play structure. The sky is clear blue with several birds flying. The overall atmosphere is bright and inviting, suggesting a self-sufficient and recreational environment.

# **WONEN EN RECREËREN IN EEN ZELFVOORZIENEND VAKANTIEPARK**