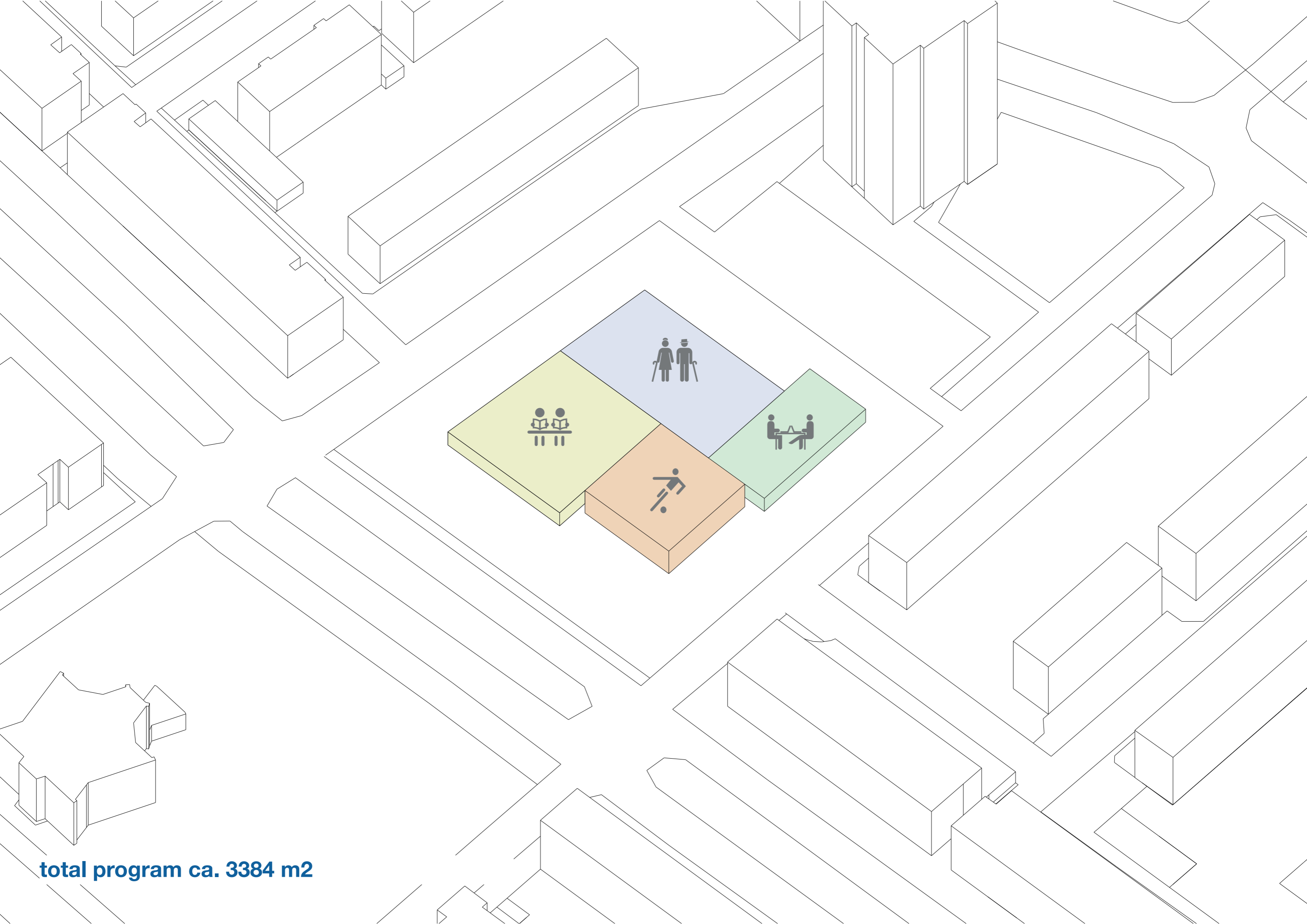


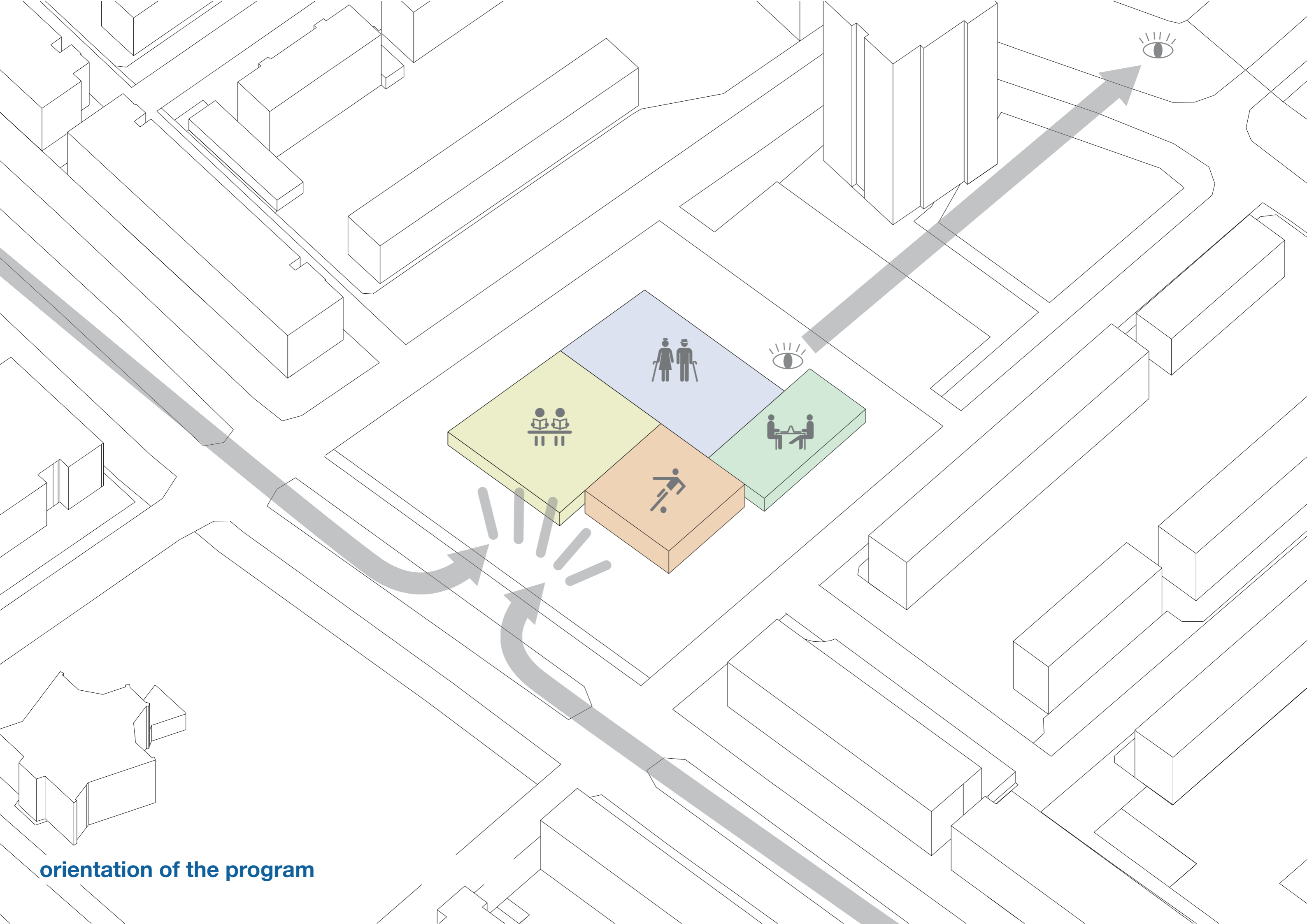
when old meets young

The building at Slinge 303 examines housing for both primary school children and elderly people. The school focuses on intergenerational learning and is therefore a crossroads where old and young complement each other. It inhibits the aging process for the elderly because they are being stimulated by children and it also provides a solution for loneliness. The children learn to deal with care for elderly, something that is not taken for granted in our society. In this way, the school contributes to a caring society in which two generations learn to live together instead of side by side.

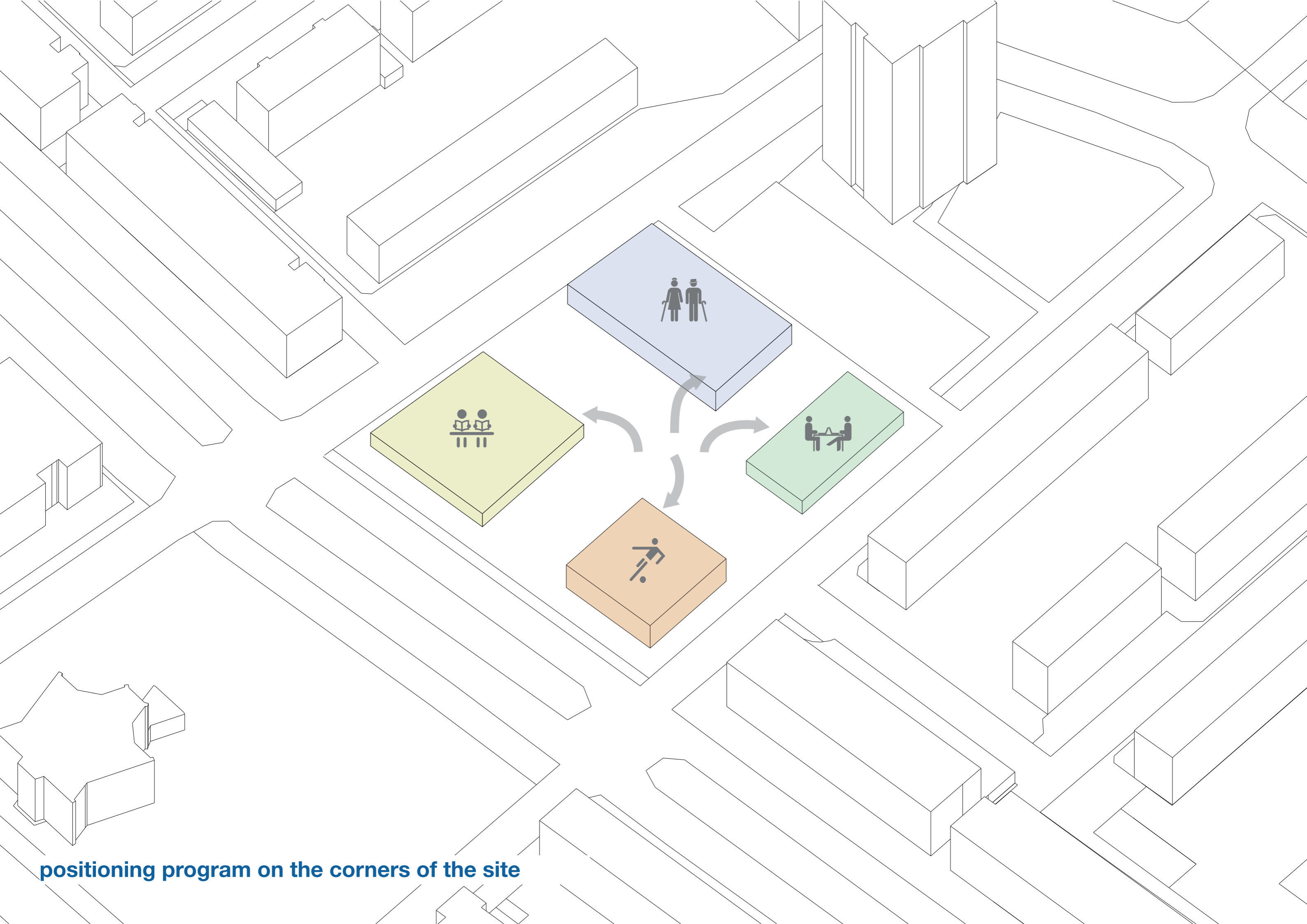




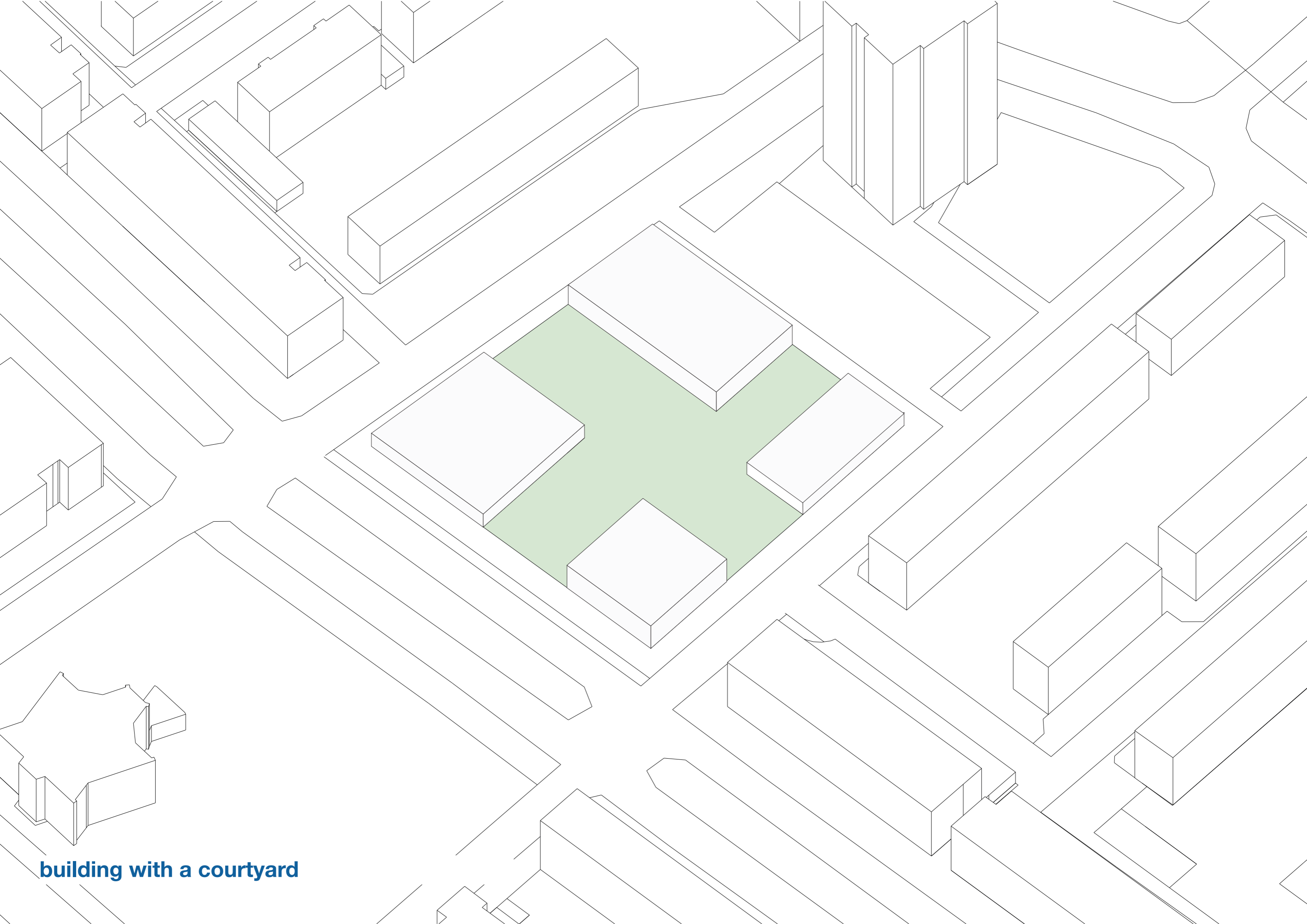
total program ca. 3384 m2



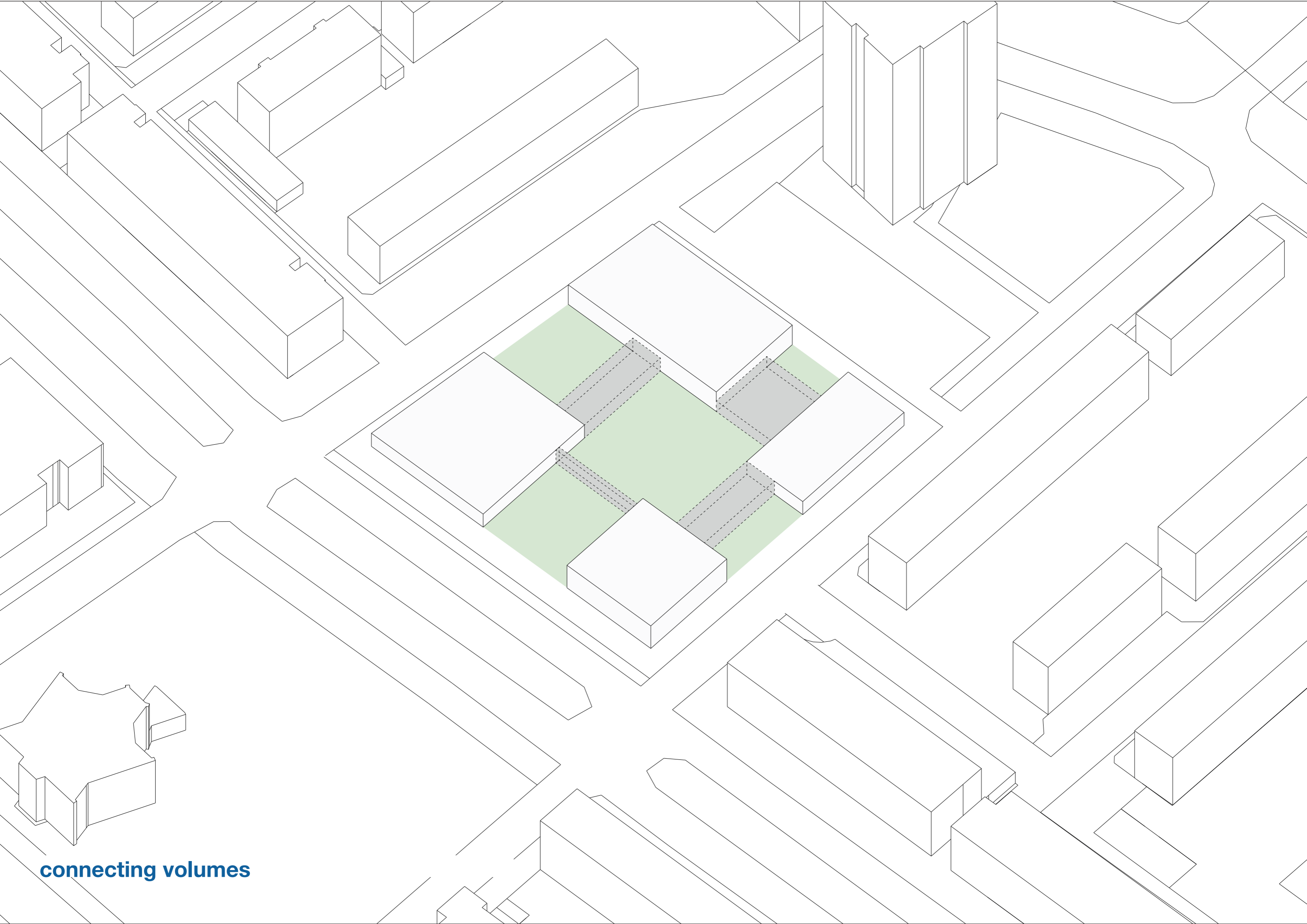
orientation of the program



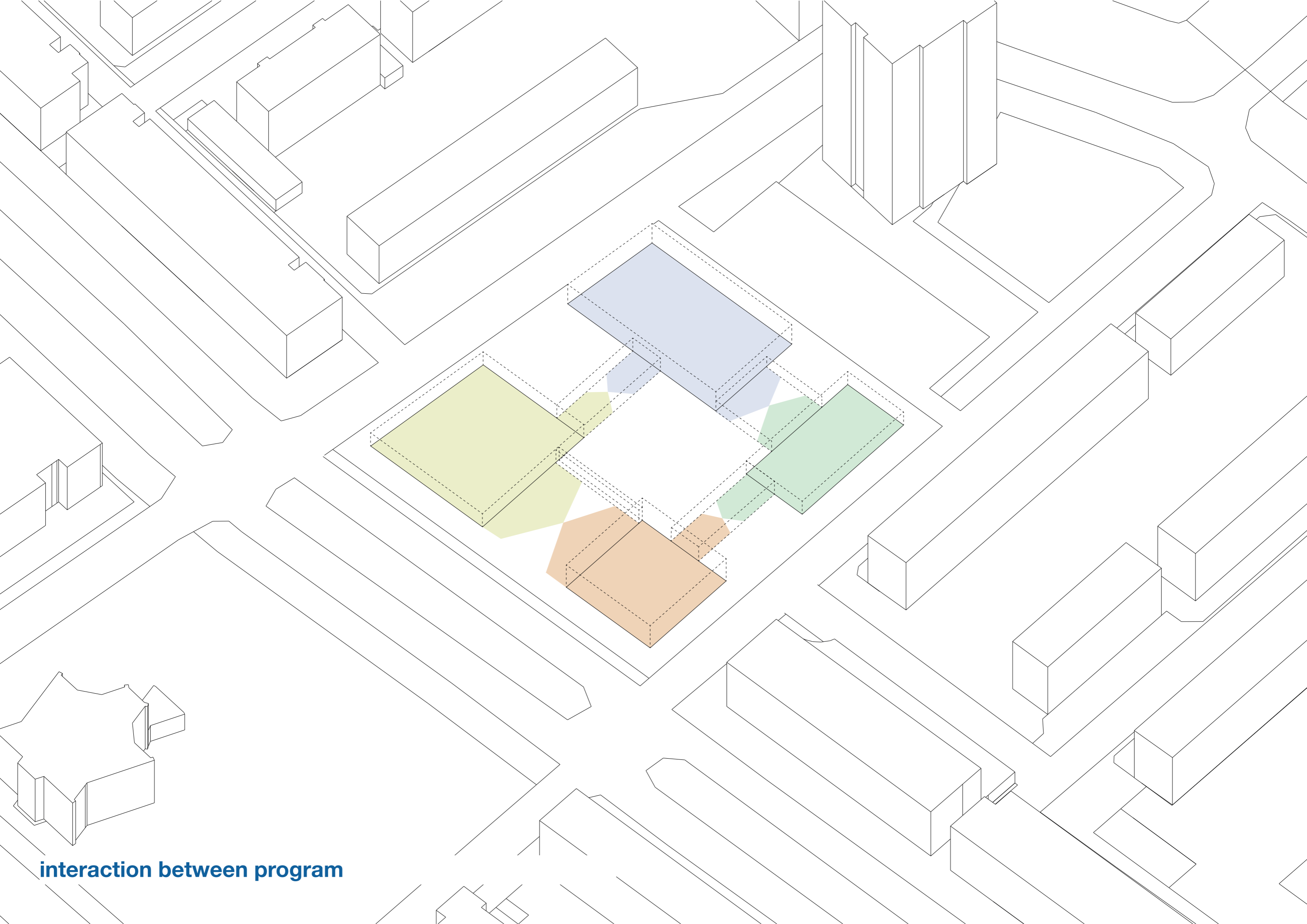
positioning program on the corners of the site



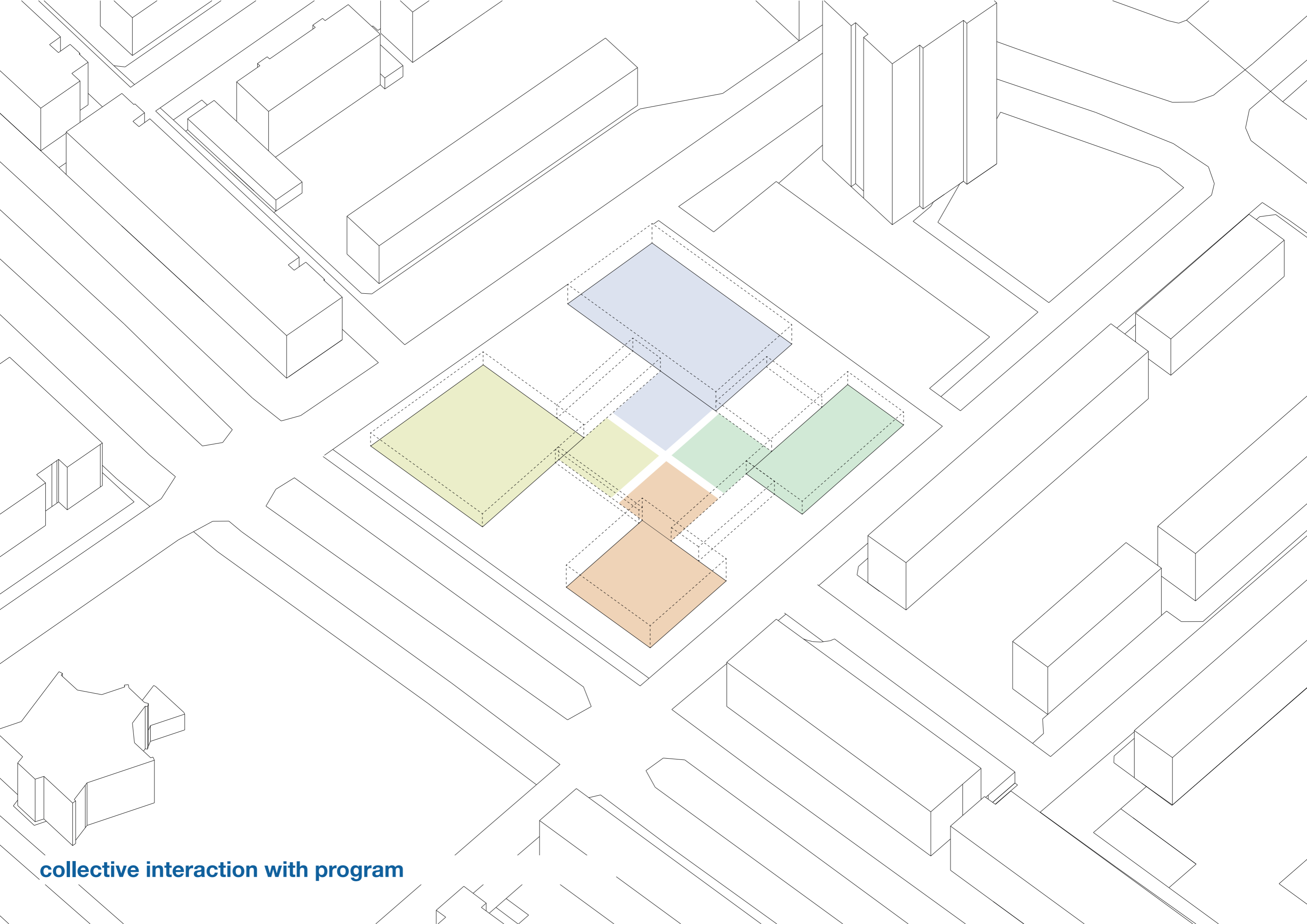
building with a courtyard



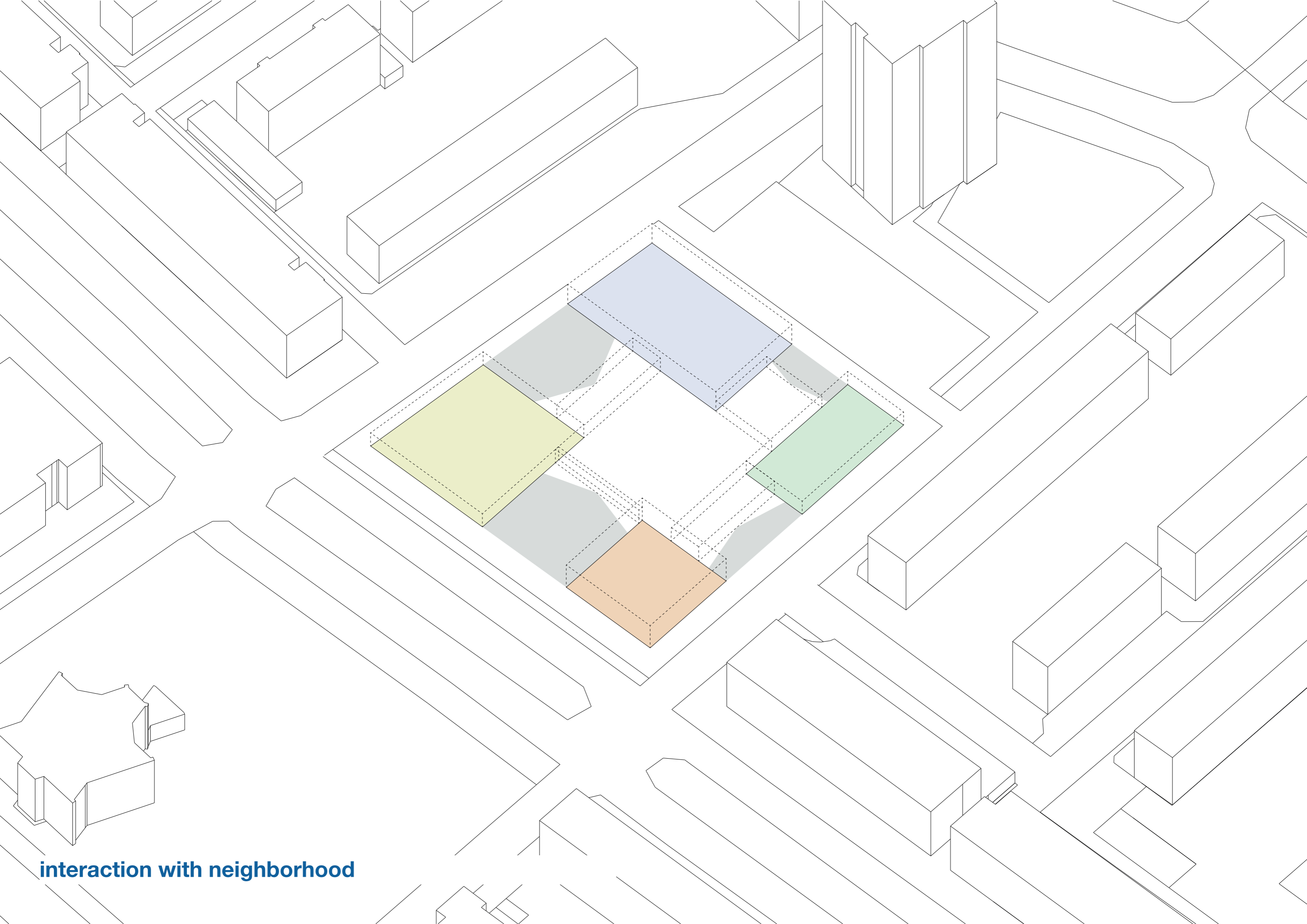
connecting volumes



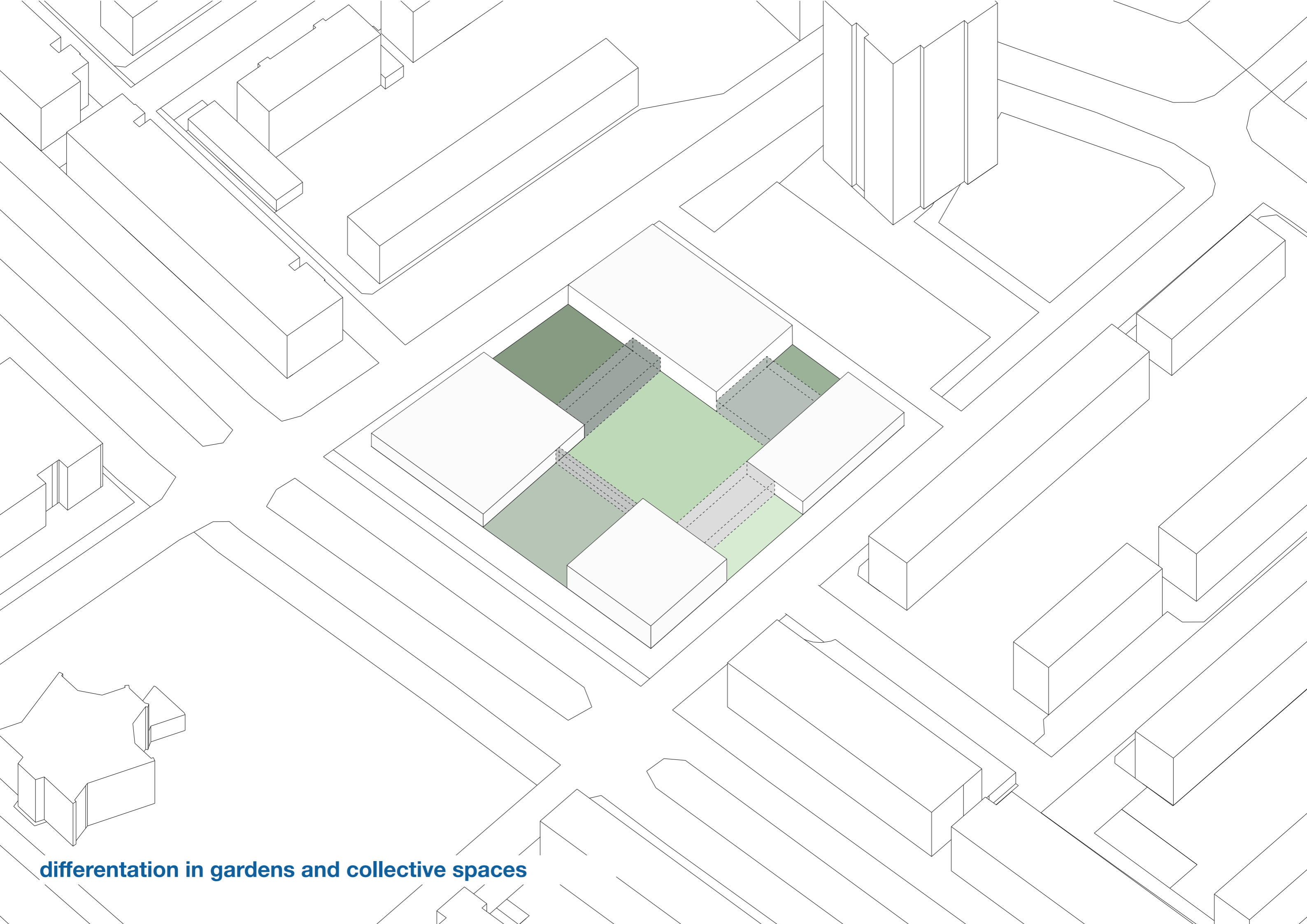
interaction between program



collective interaction with program



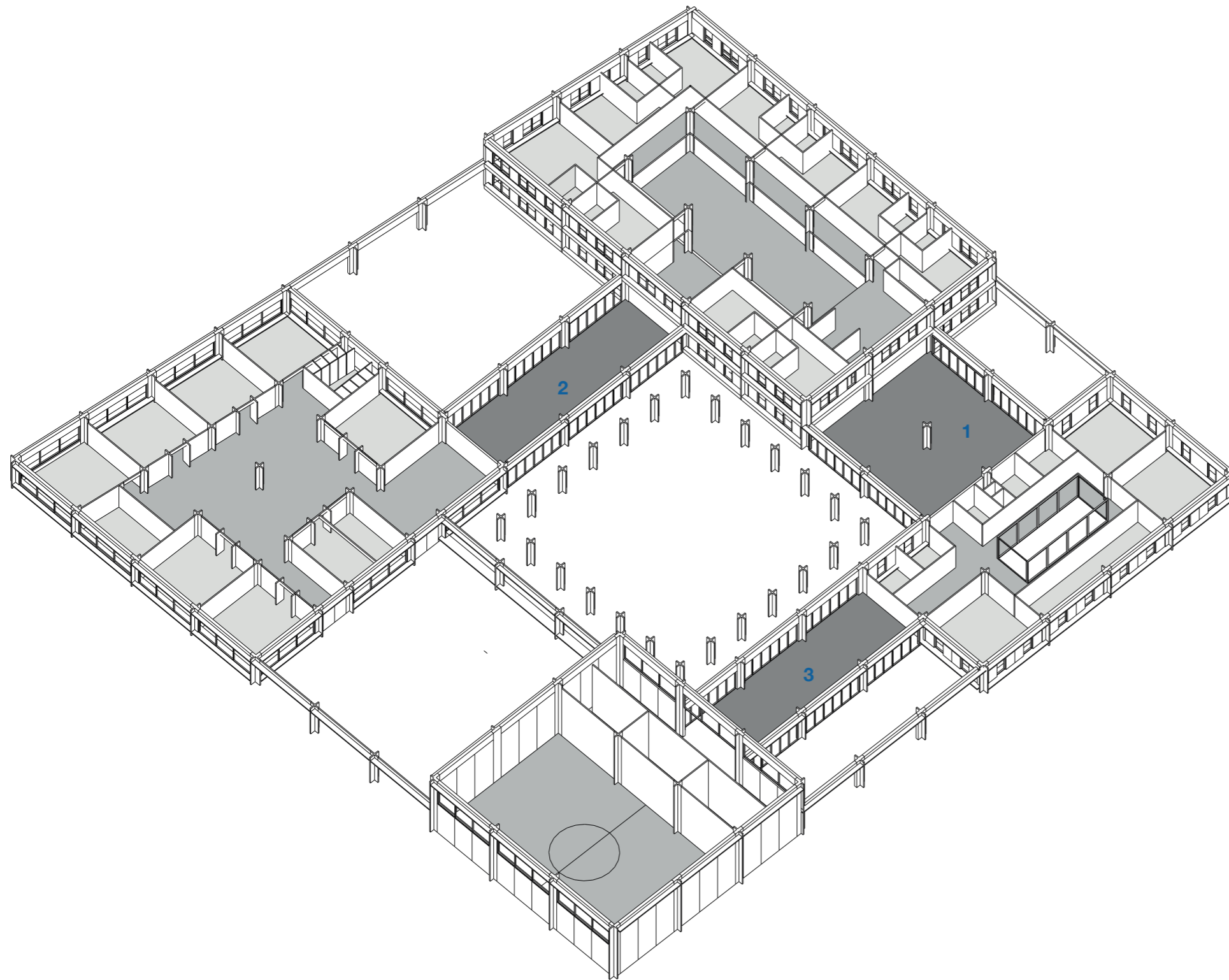
interaction with neighborhood



differentiation in gardens and collective spaces



interior spaces | private and collective spaces



1. communal living room elderly



2. garden room

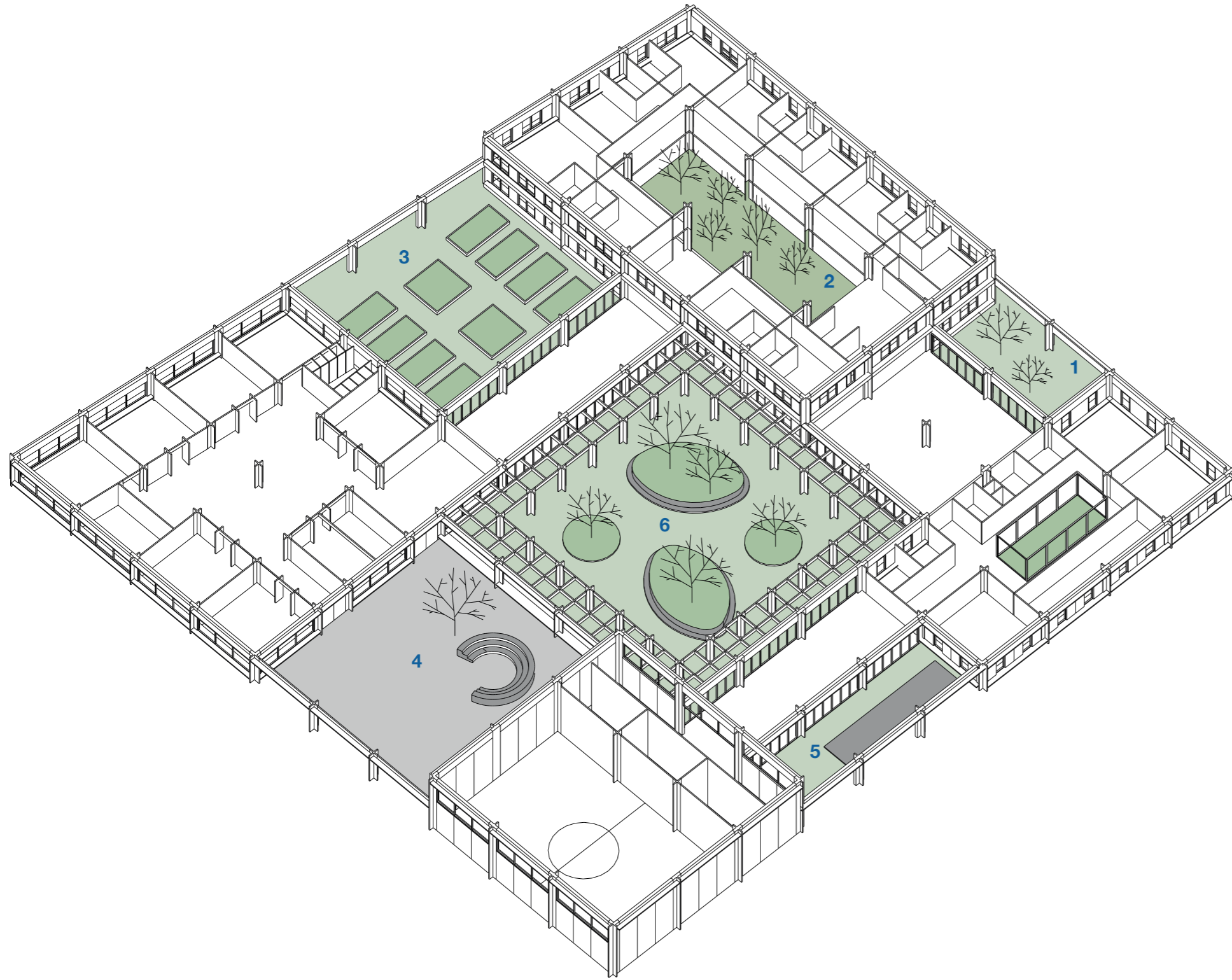


3. entrance pavillion

“ The 80-year old Selma helped me with planting the seeds for a new tomato plant. Once a week we go and have a look if the seeds have already come out ”



outdoor spaces | thematic gardens



1. wild flower garden



2. botanical indoor garden



3. edible garden



4. schoolyard



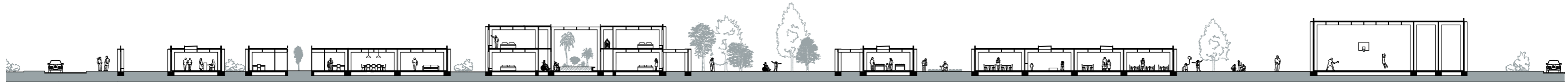
5. jeu de boules garden



6. wander garden



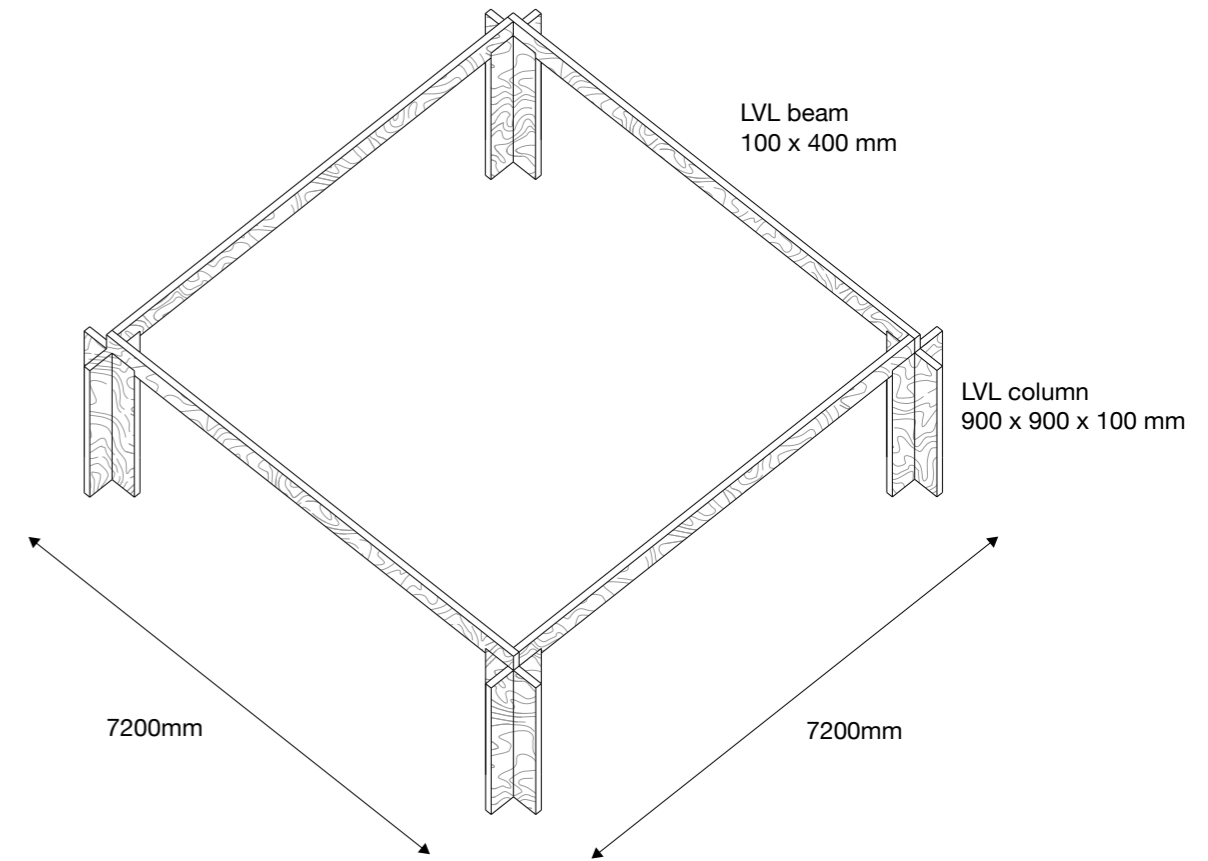
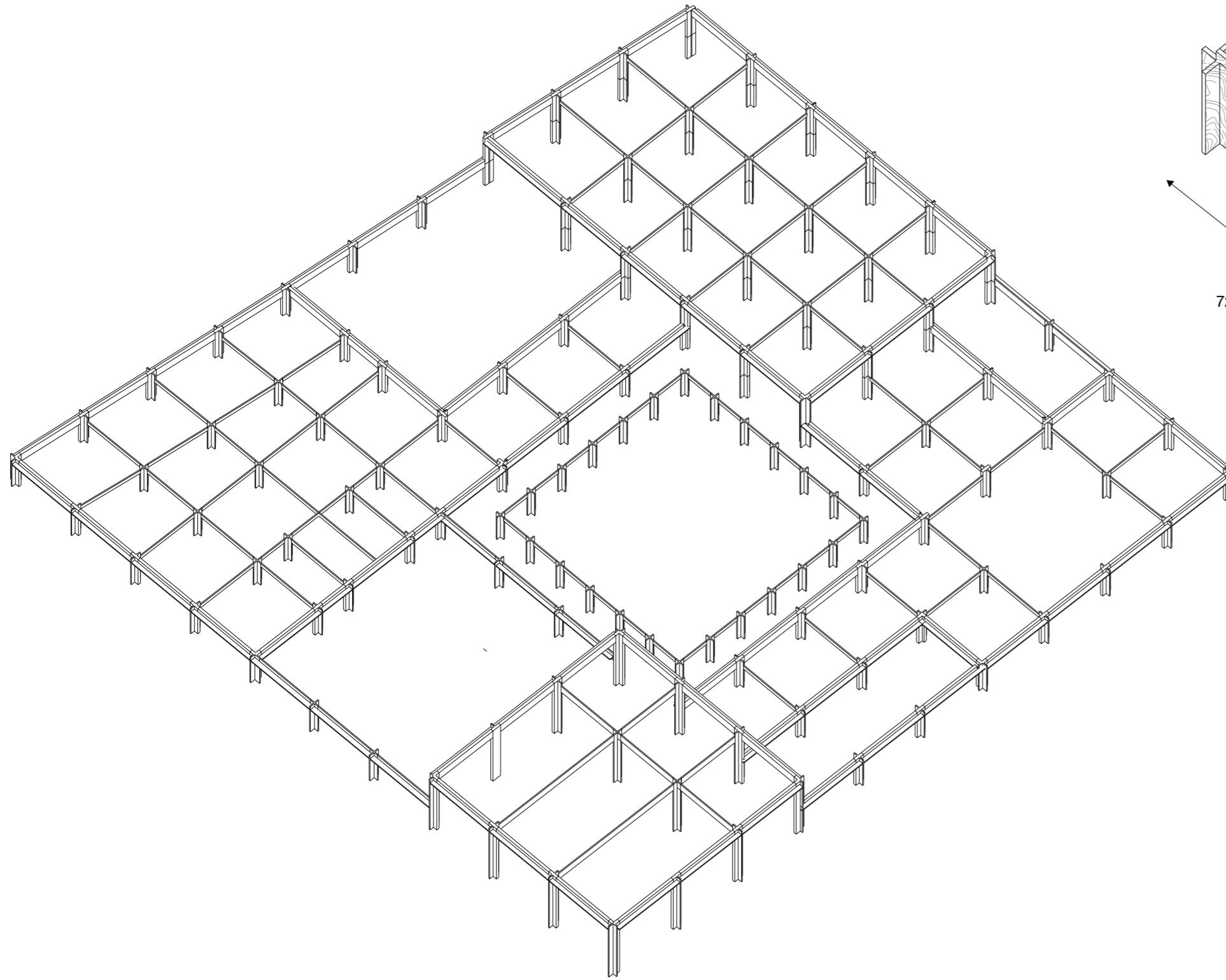
section | 1:200



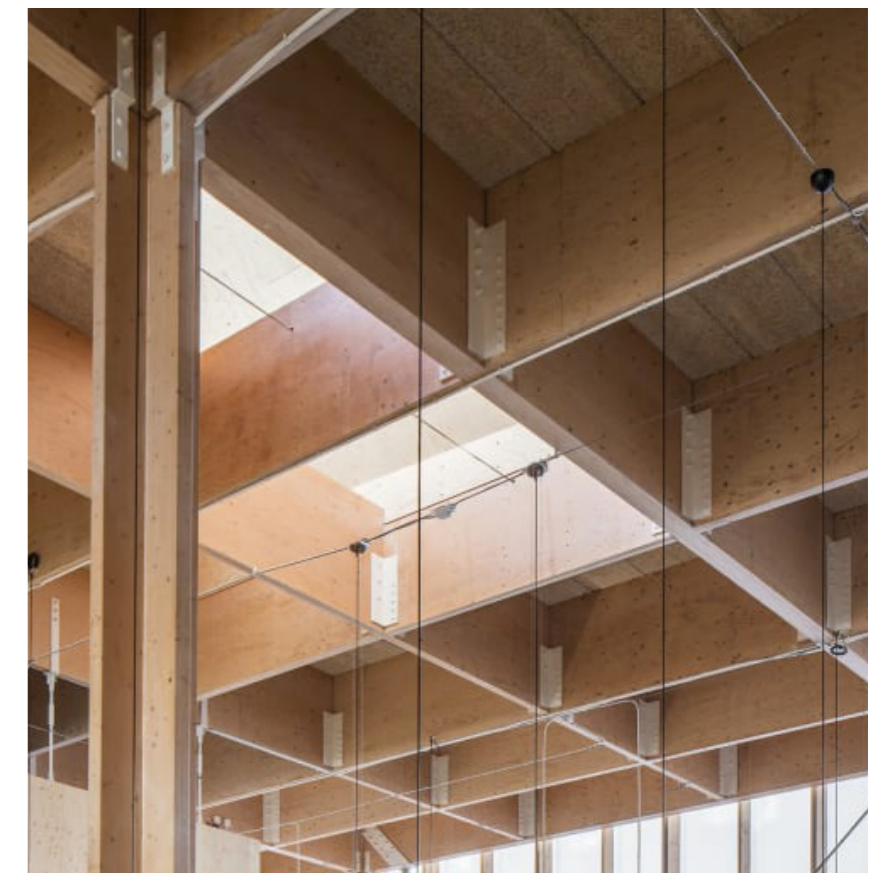
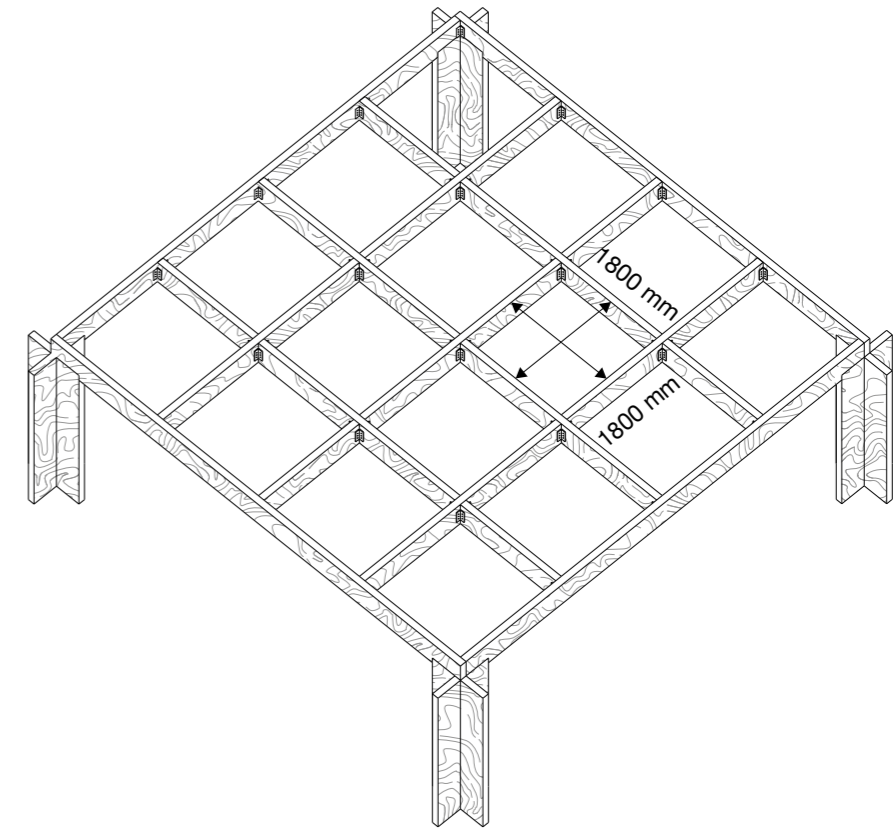
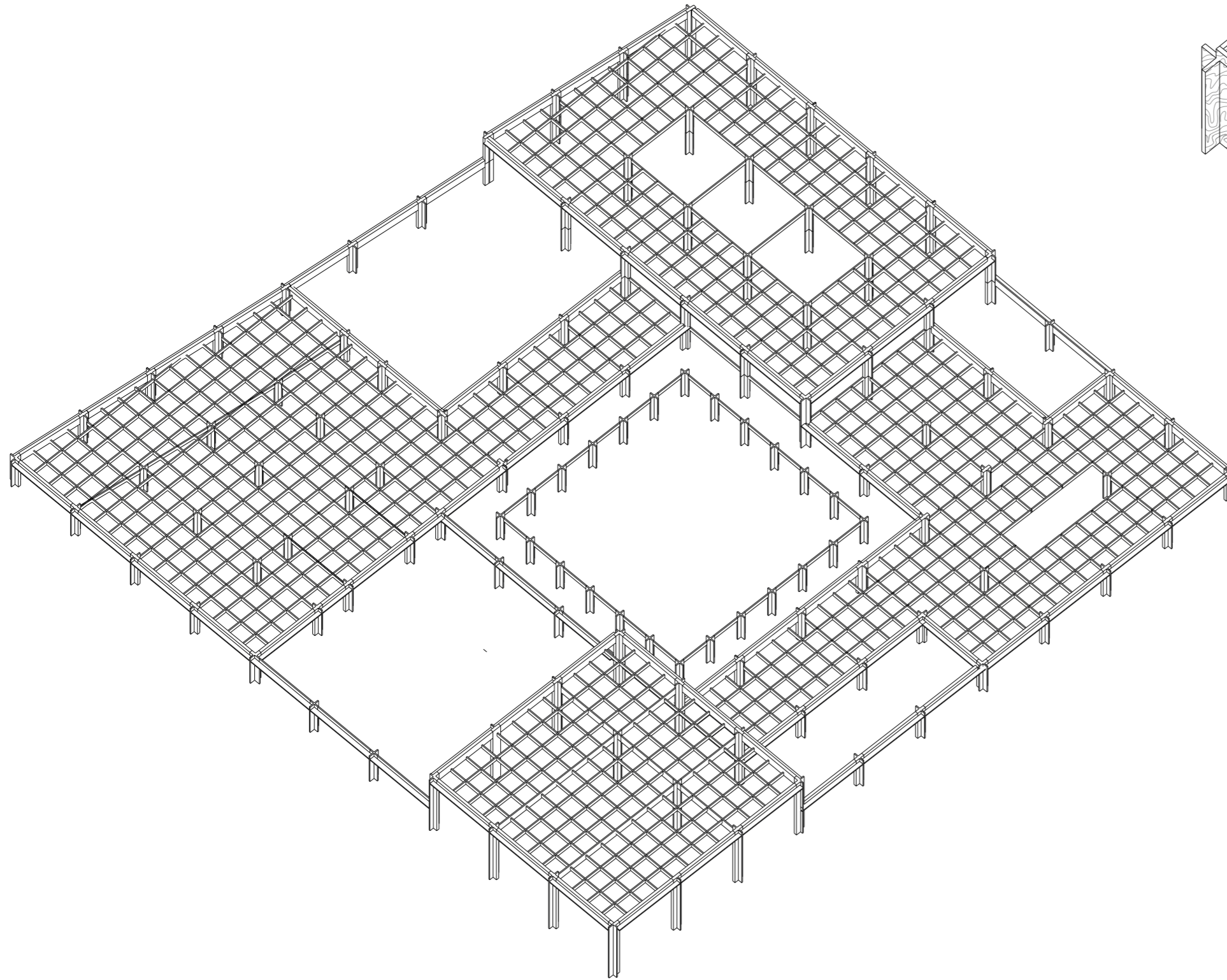
“ Today we are celebrating spring together. It is so nice to play jeu de boules with the children and to see them running around in our communal courtyard “



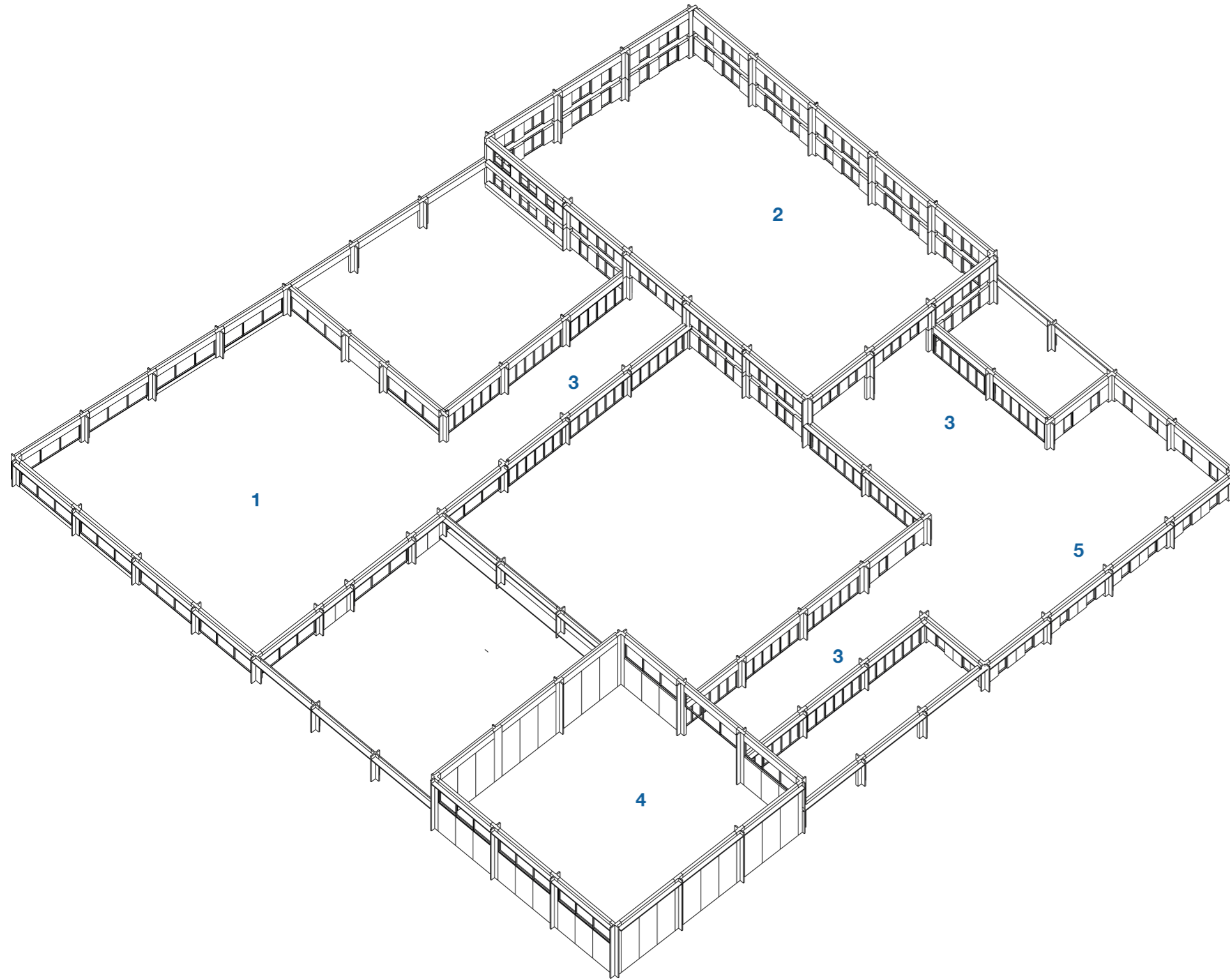
construction | load bearing structure



construction | roof structure



facades



1. school



2. elderly housing



3. collective spaces

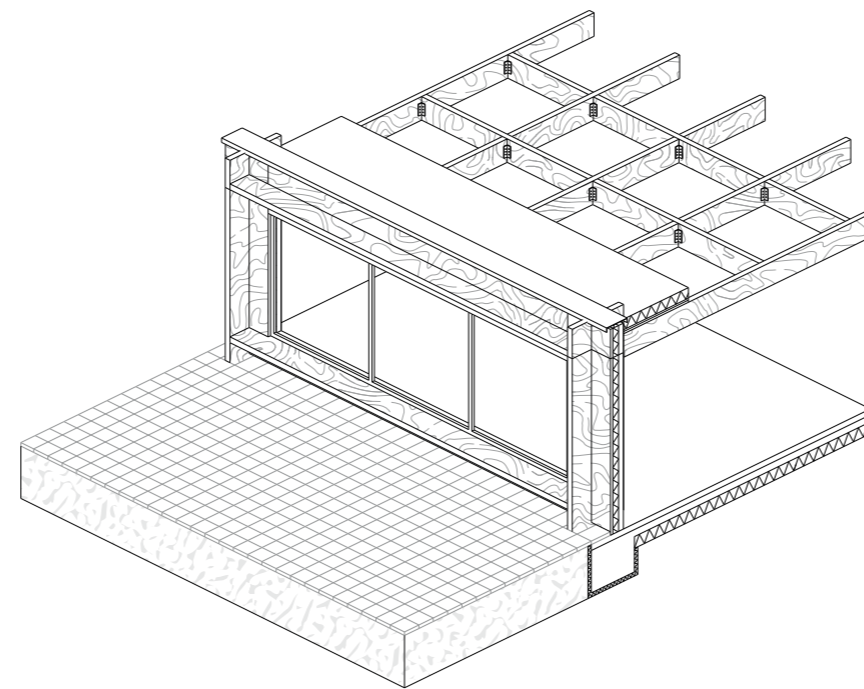
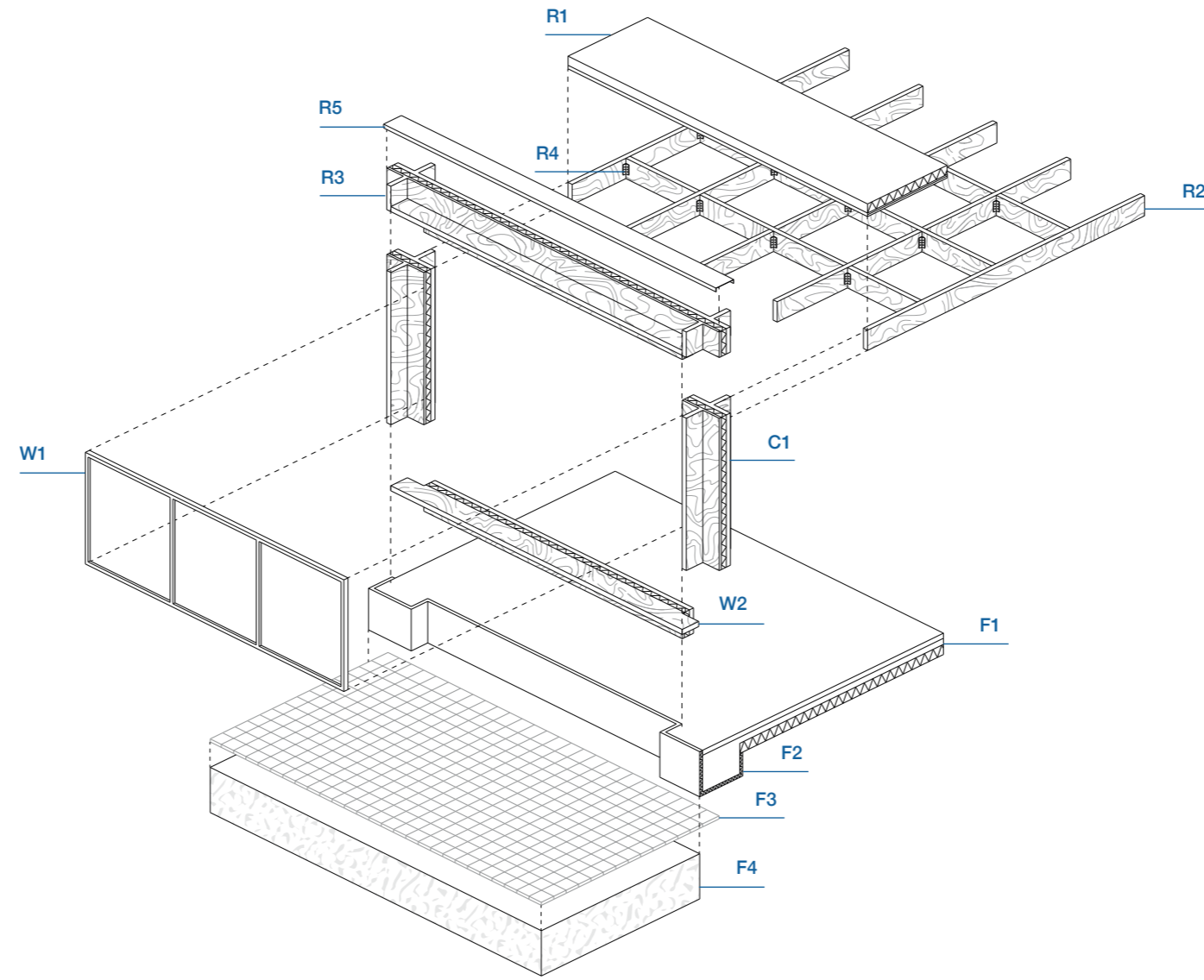


4. gymnastics



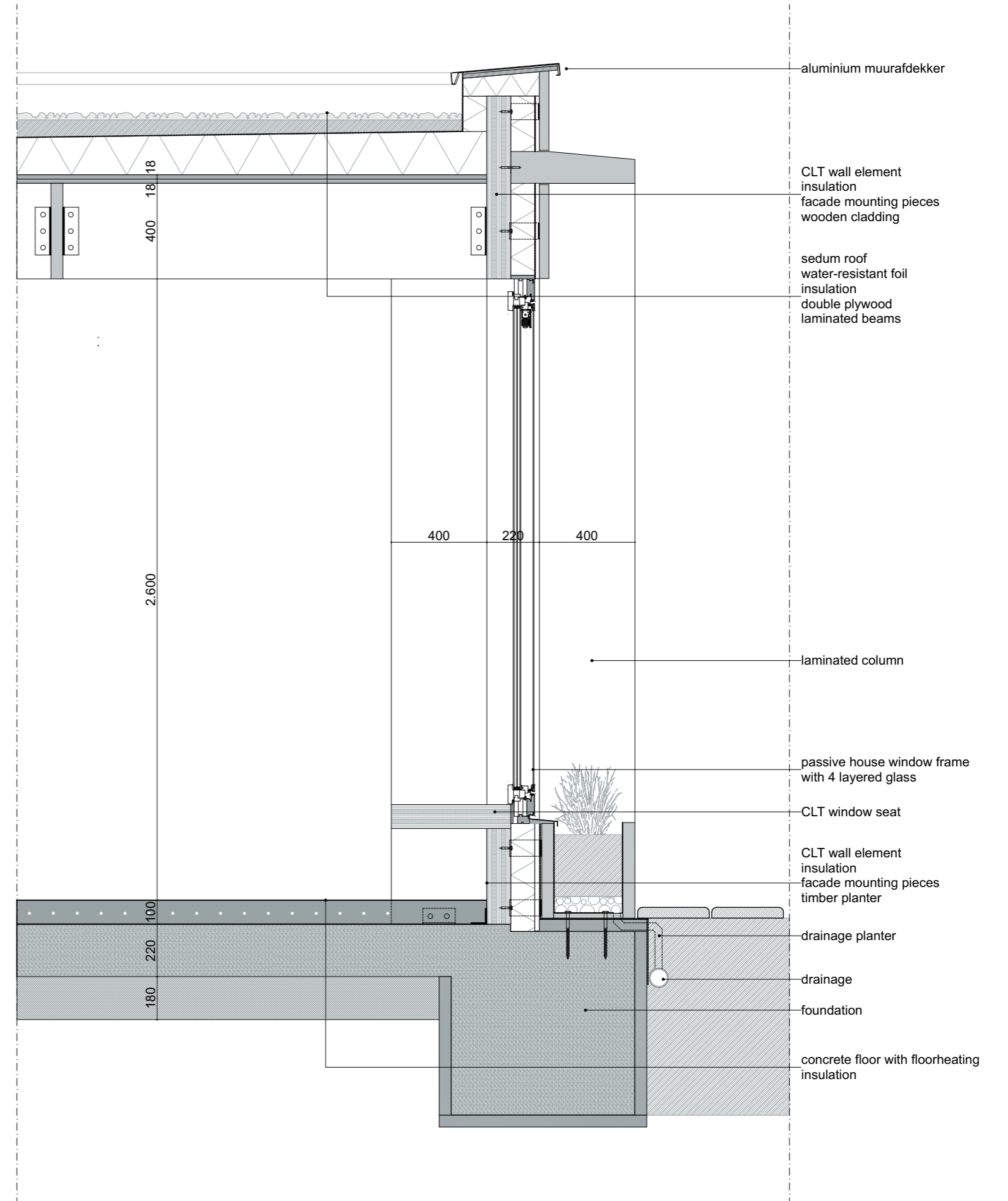
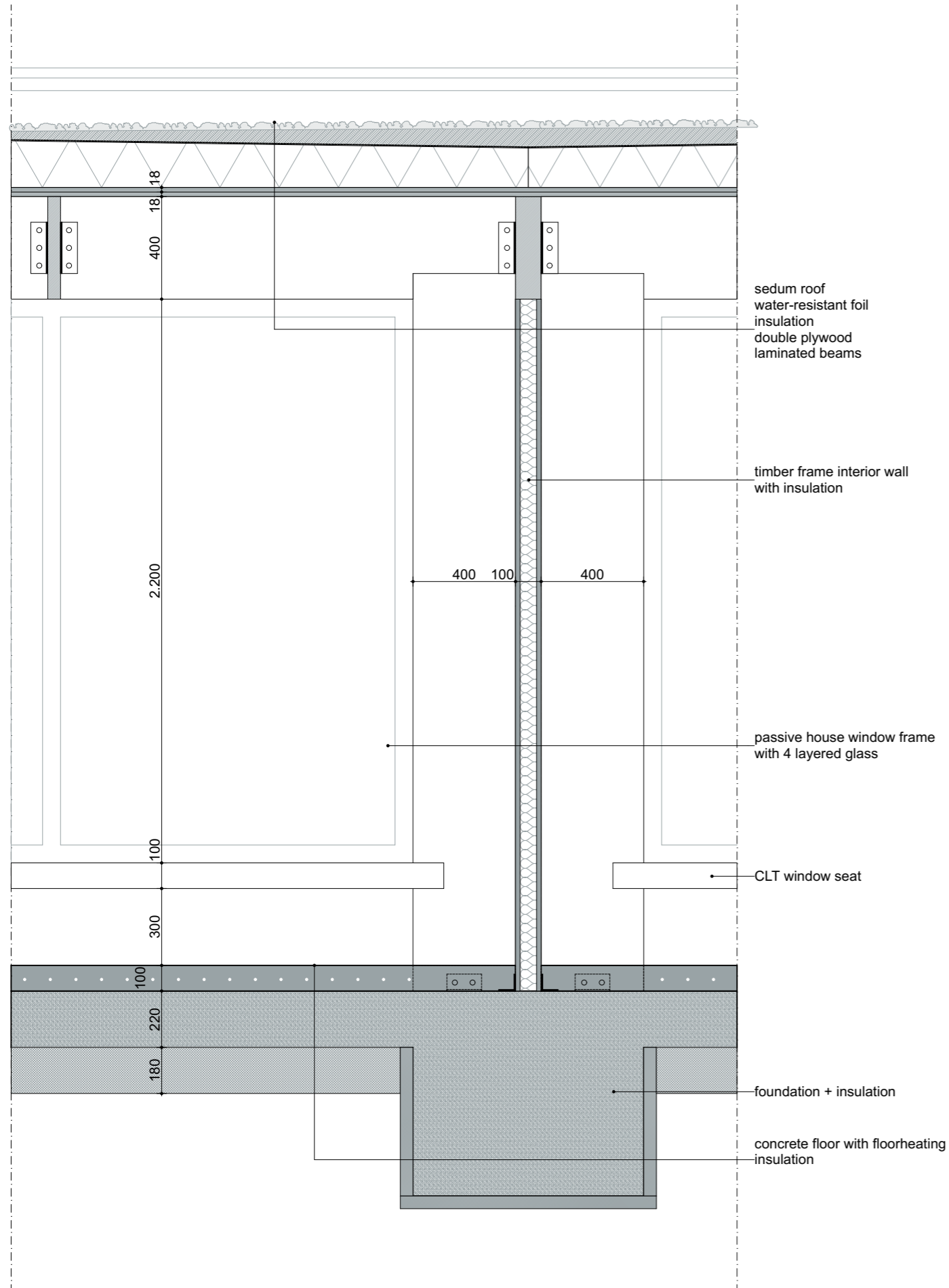
5. offices

details | element drawing



- R1. timber roof + insulation + roof finish
- R2. roof structure of laminated beams
- R3. roof curb of laminated beams
- R4. beam attachment
- R5. aluminium wall cover
- C1. timber columns
- W1. aluminium window frames
- W2. laminated base including window seat
- F1. concrete floor + insulation
- F2. concrete foundation + insulation
- F3. pavement
- F4. soil

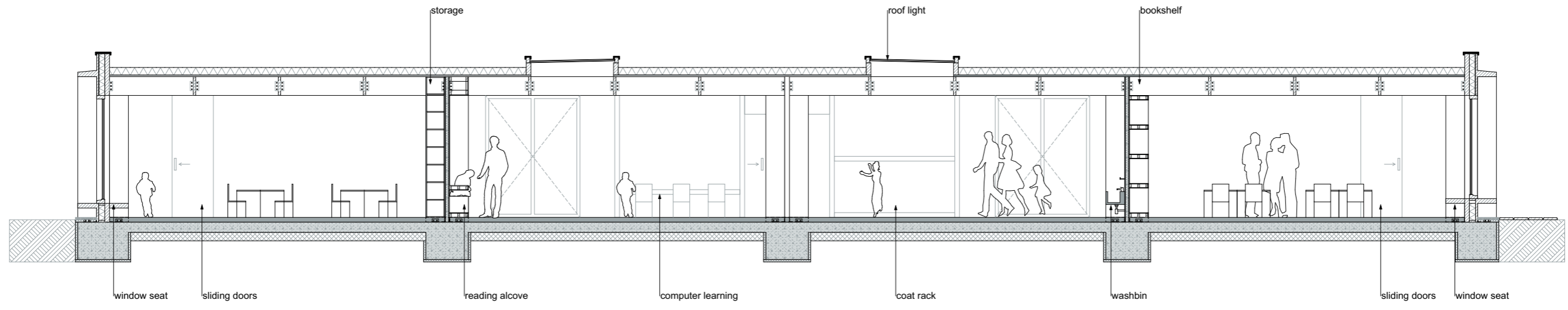
details | fragments 1:20



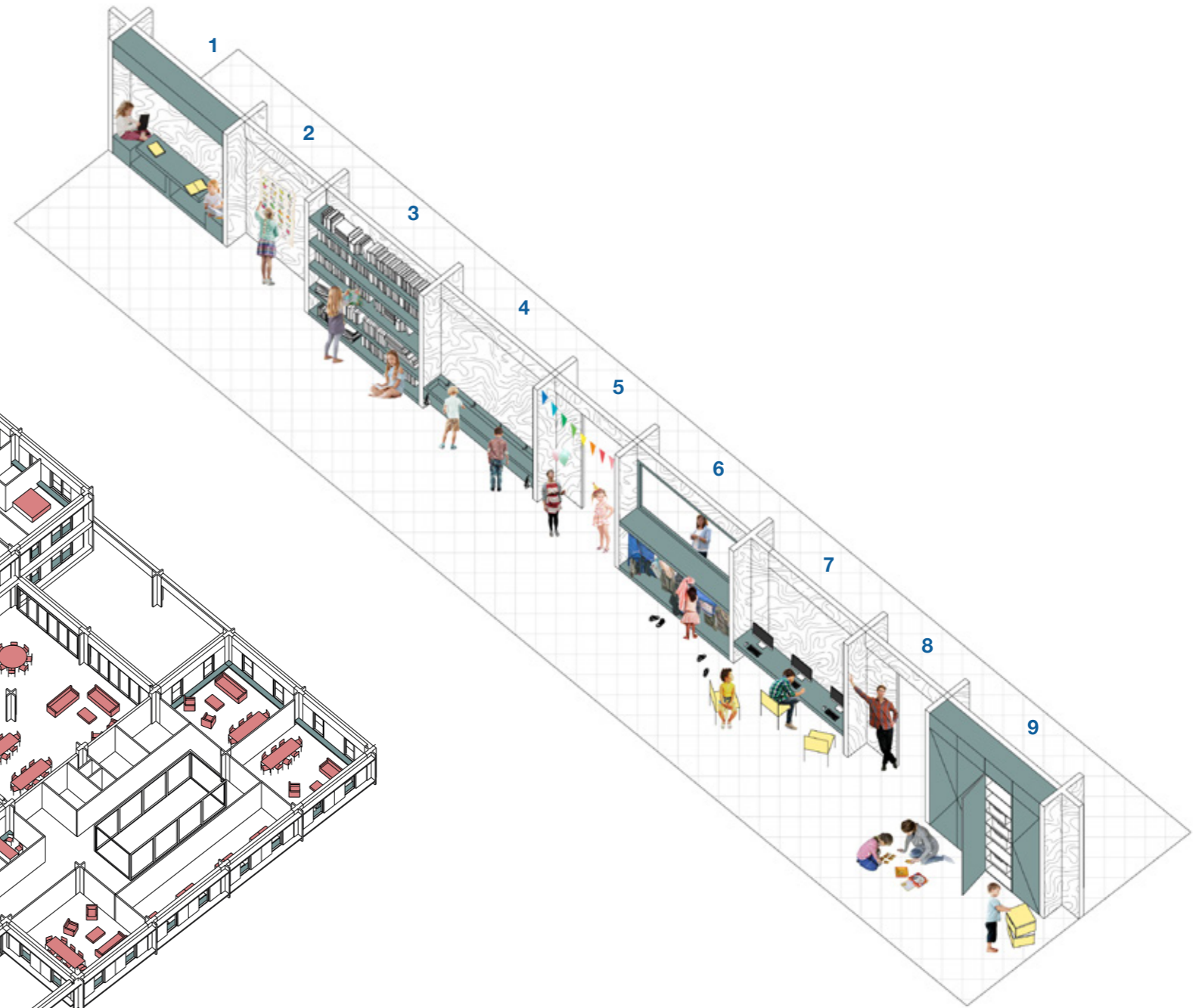
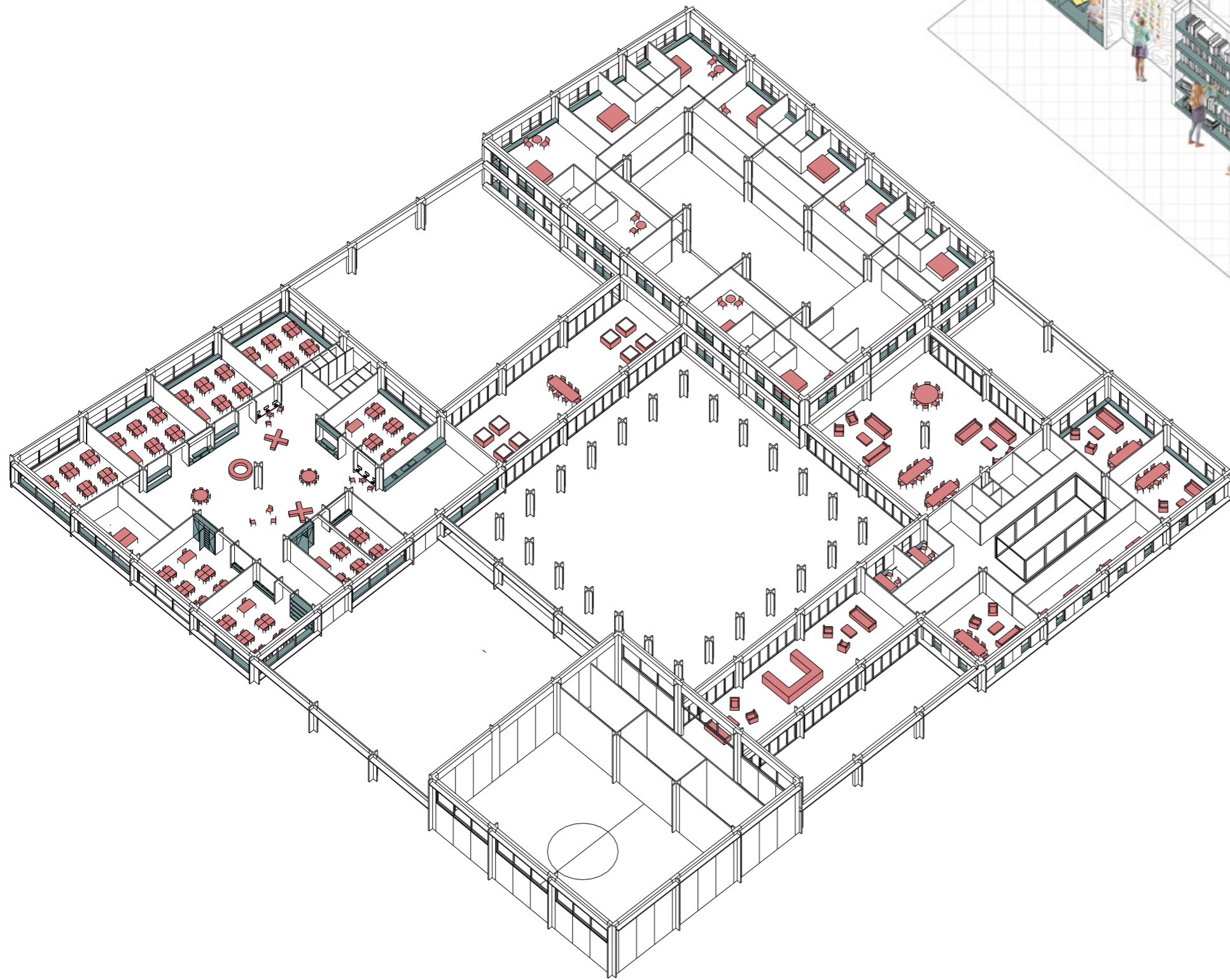
floorplan | 1:200



section school cluster | 1:50



interior | fixed elements



- 1. reading alcove
- 2. art wall
- 3. bookshelf
- 4. washbin
- 5. classroom entrance
- 6. coat rack
- 7. computer learning
- 8. classroom entrance
- 9. storage



“ Teacher Jessica is giving us biological lessons about the aging process while the other kids are working in groups on this theme. “



“ Every morning i’ll go for a walk in the botanical garden and have a chat with my neighbour Jasper. We talk about things from back in the days while we enjoying the art ”

