

Moving through boundaries

Project Based education

Neighborhood to Playground

Guide



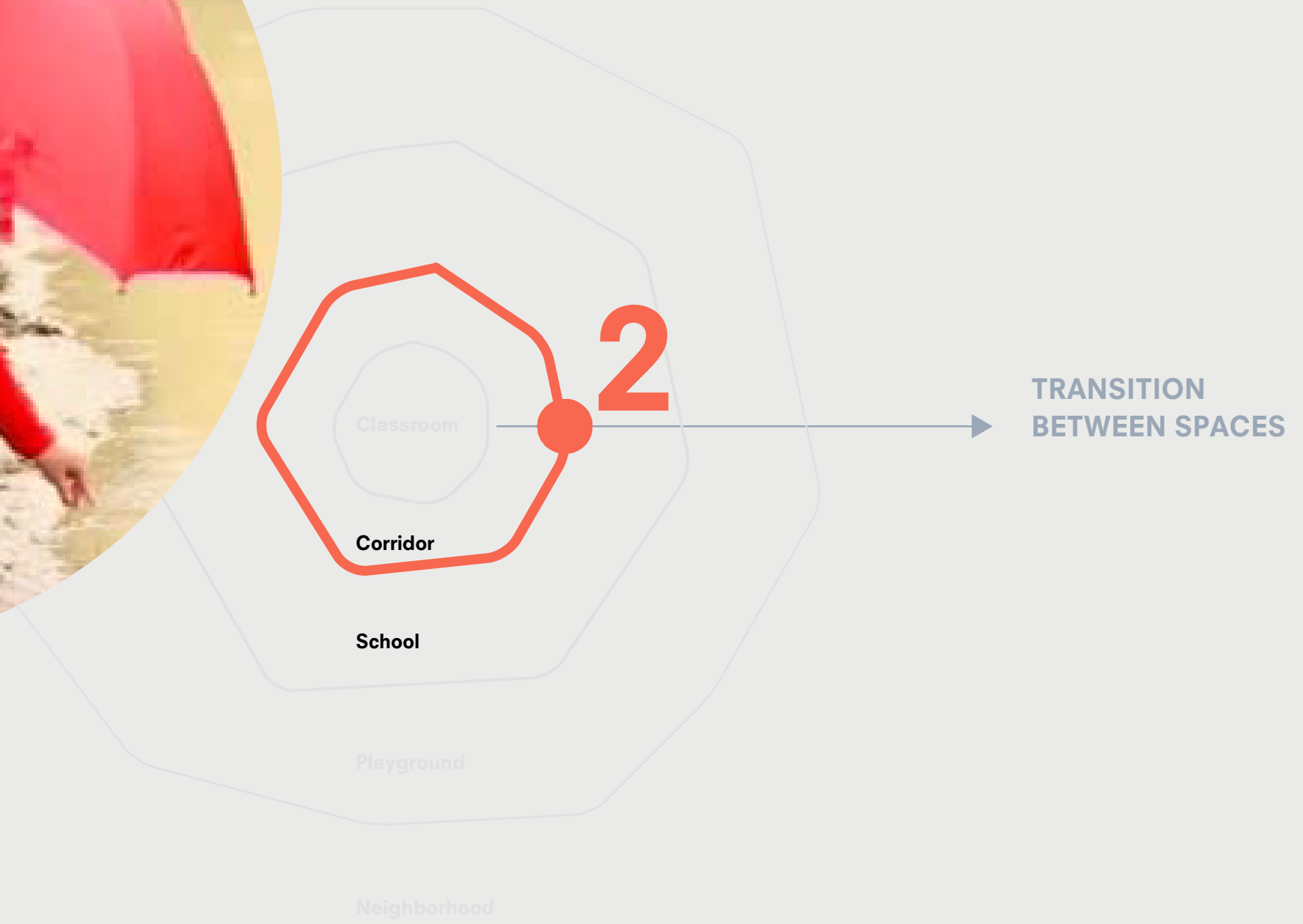
Playground to School

Guide



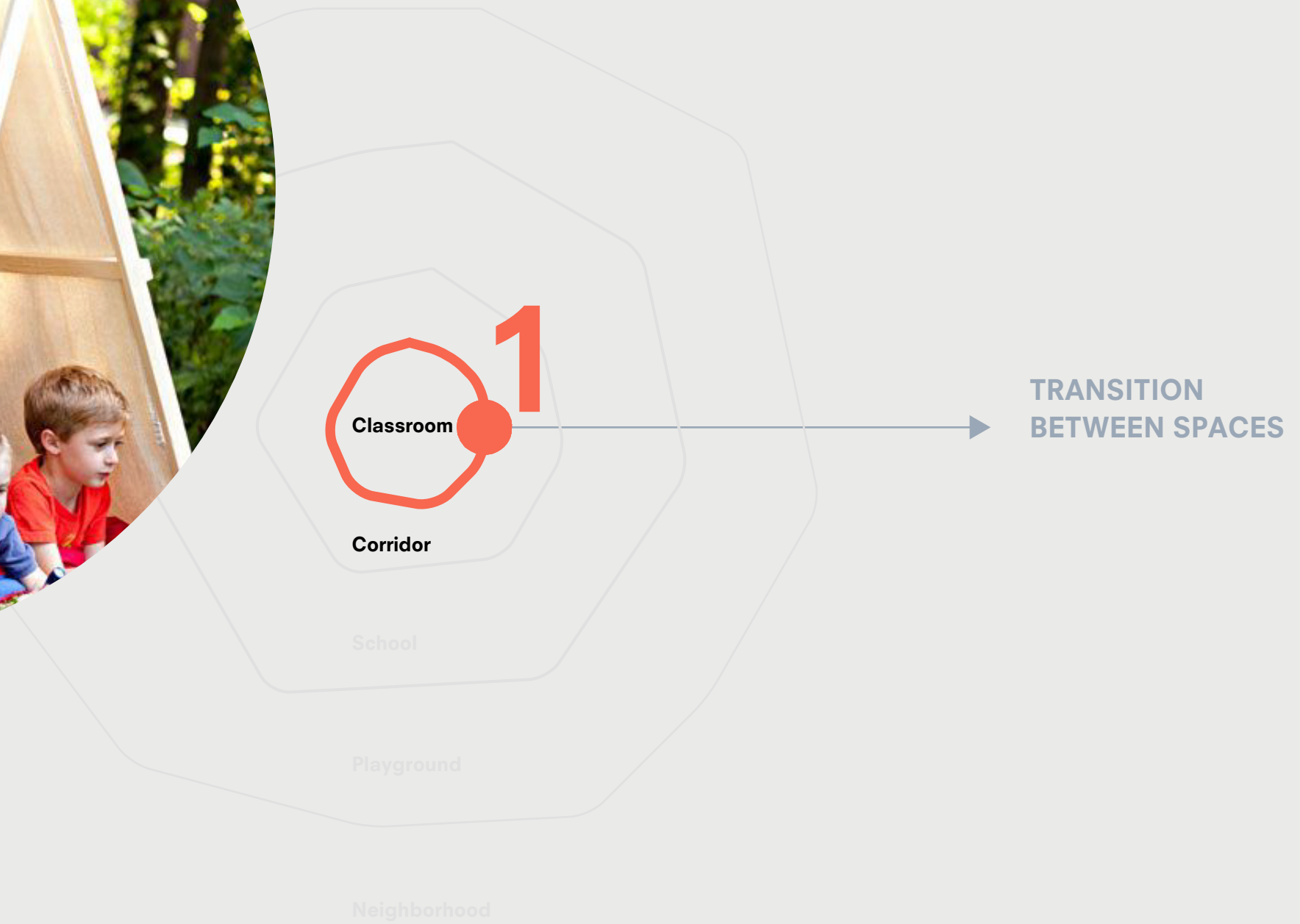
School to corridor

Guide



Corridor to classroom

Guide



Plan

1:500

4. playground to neighborhood

Larenkamp

Park

Square

Slinge

Square

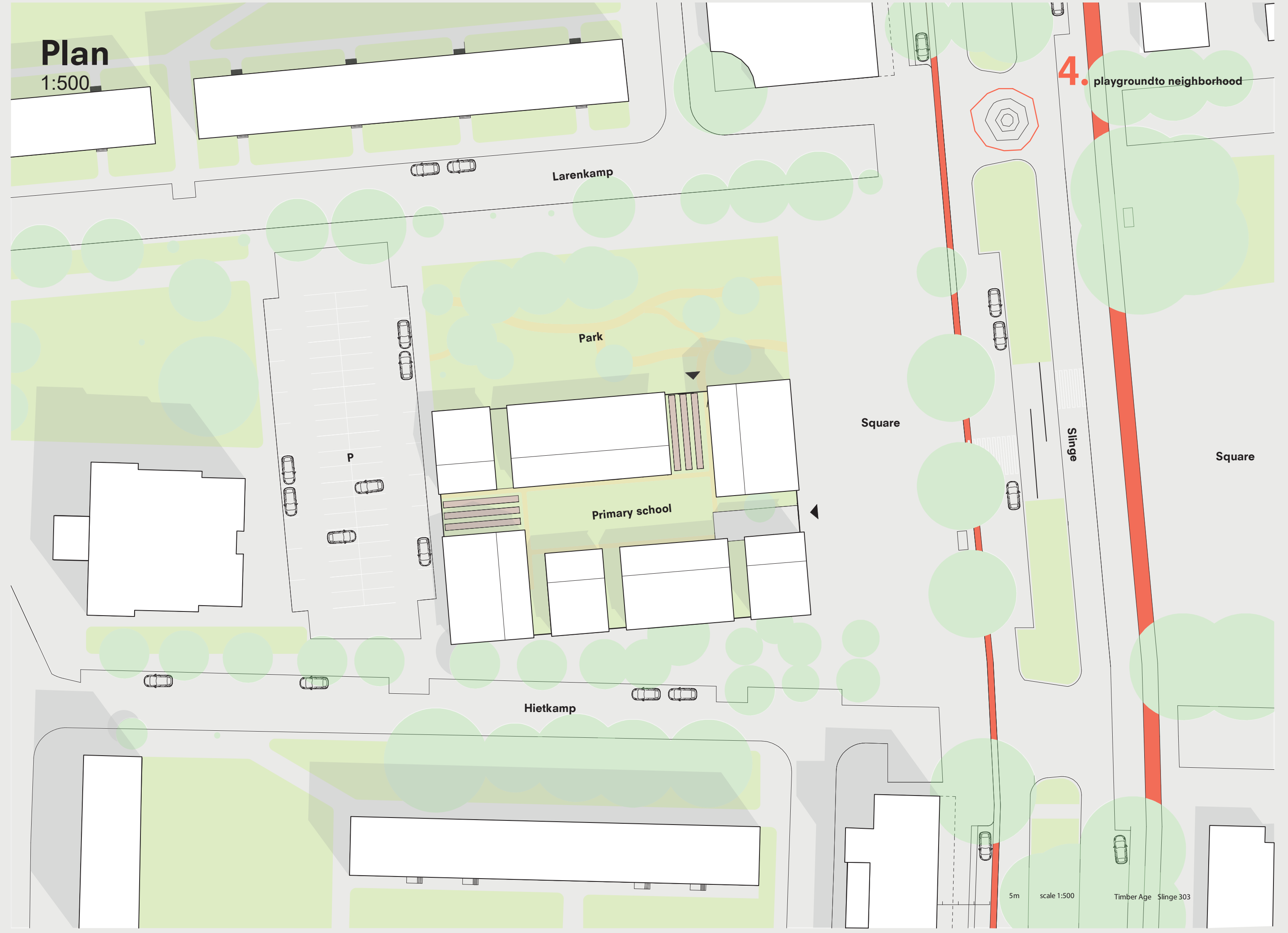
Primary school

P

Hietkamp

5m scale 1:500

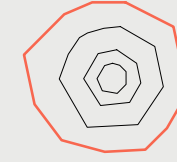
Timber Age Slinge 303



Section A

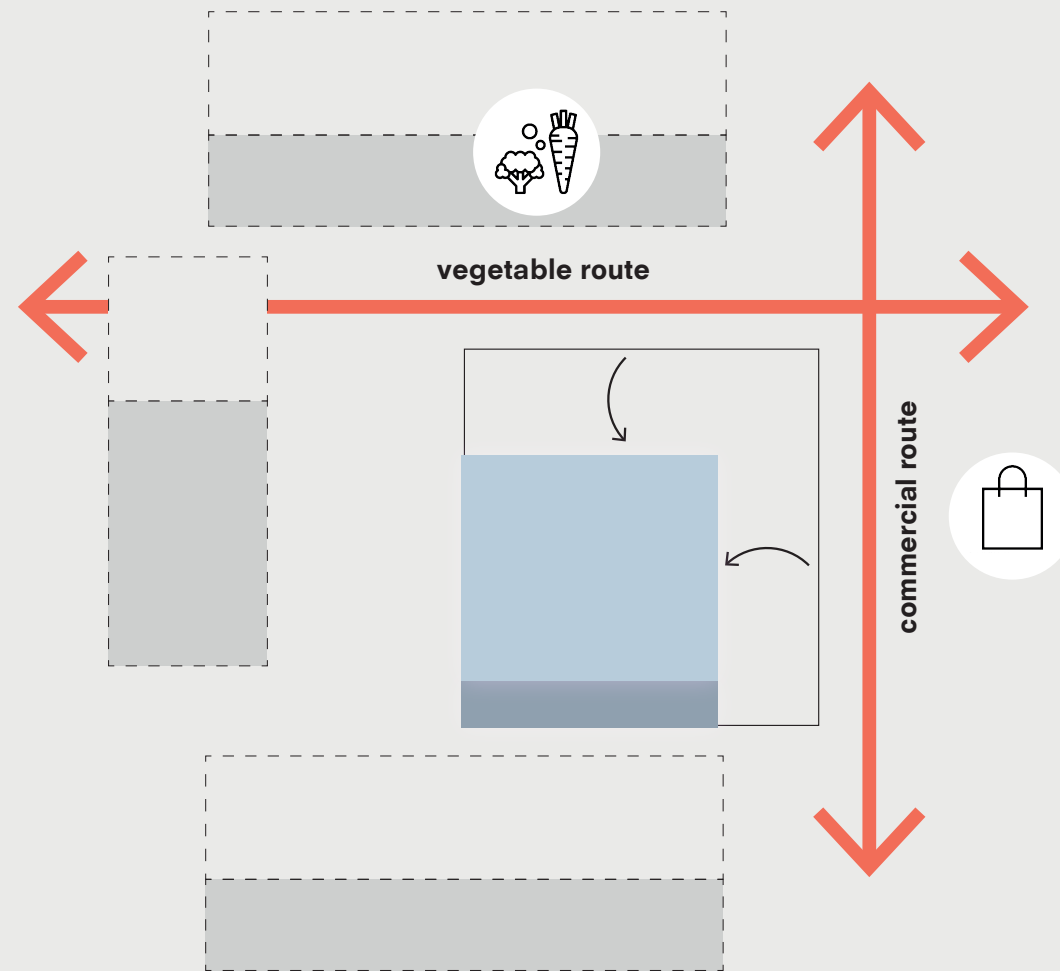
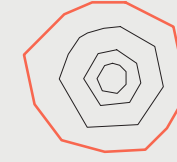
1:500

4. playground to neighborhood



Pedestrian routes

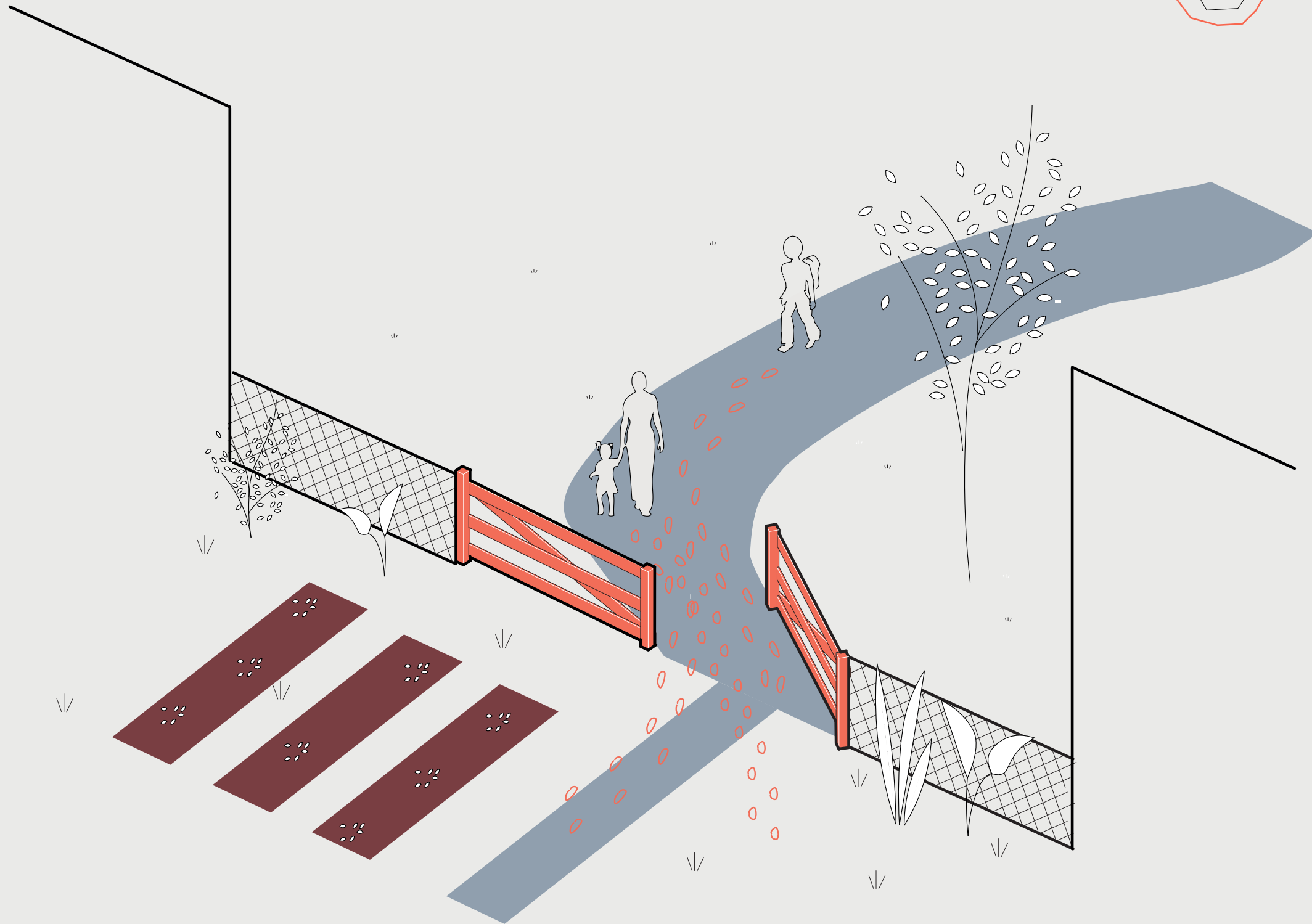
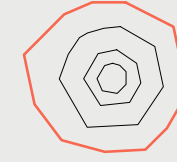
Diagram



Boundaries

axonometric view

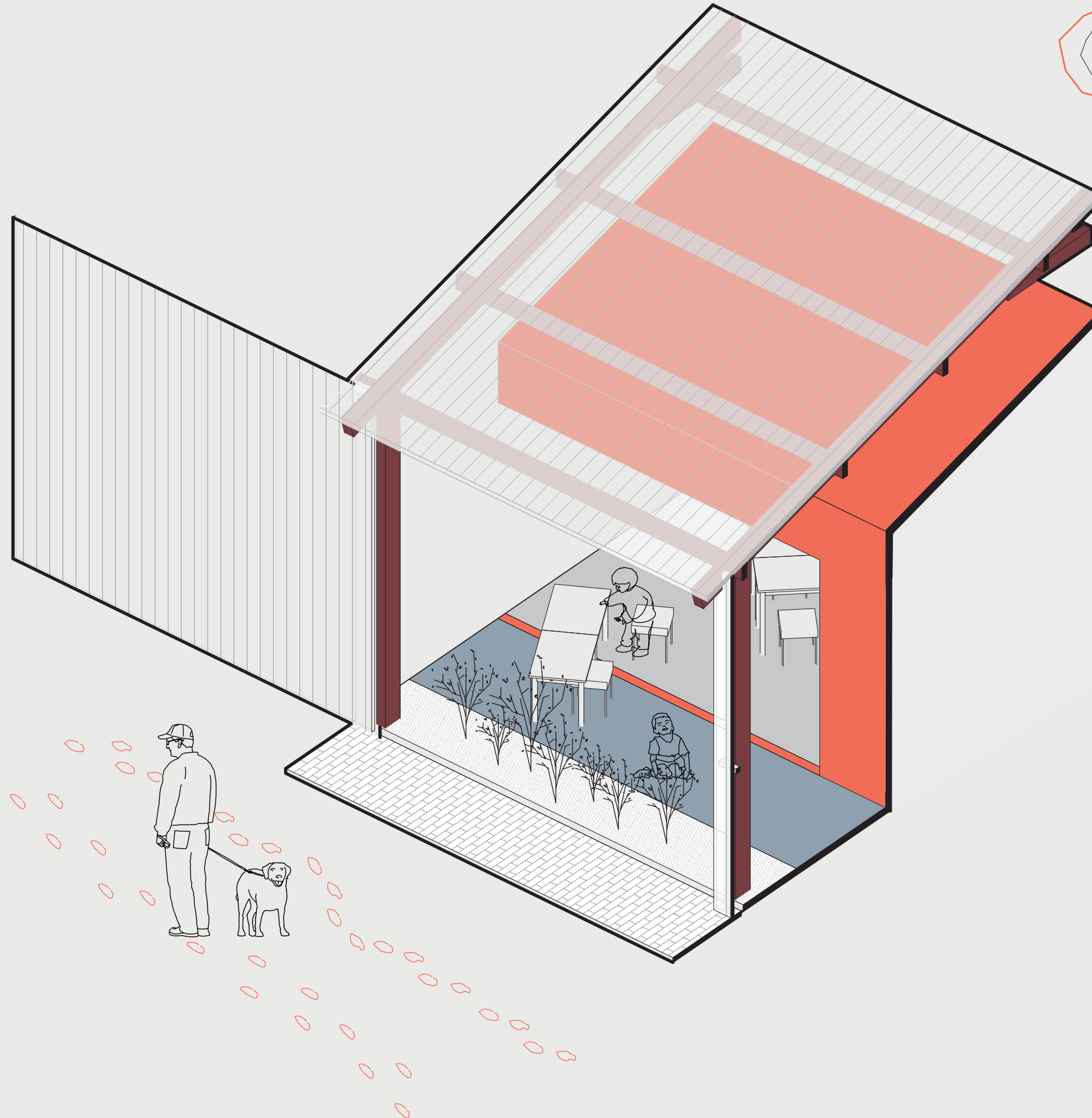
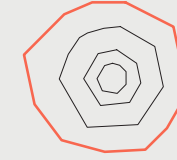
4. playground to neighborhood



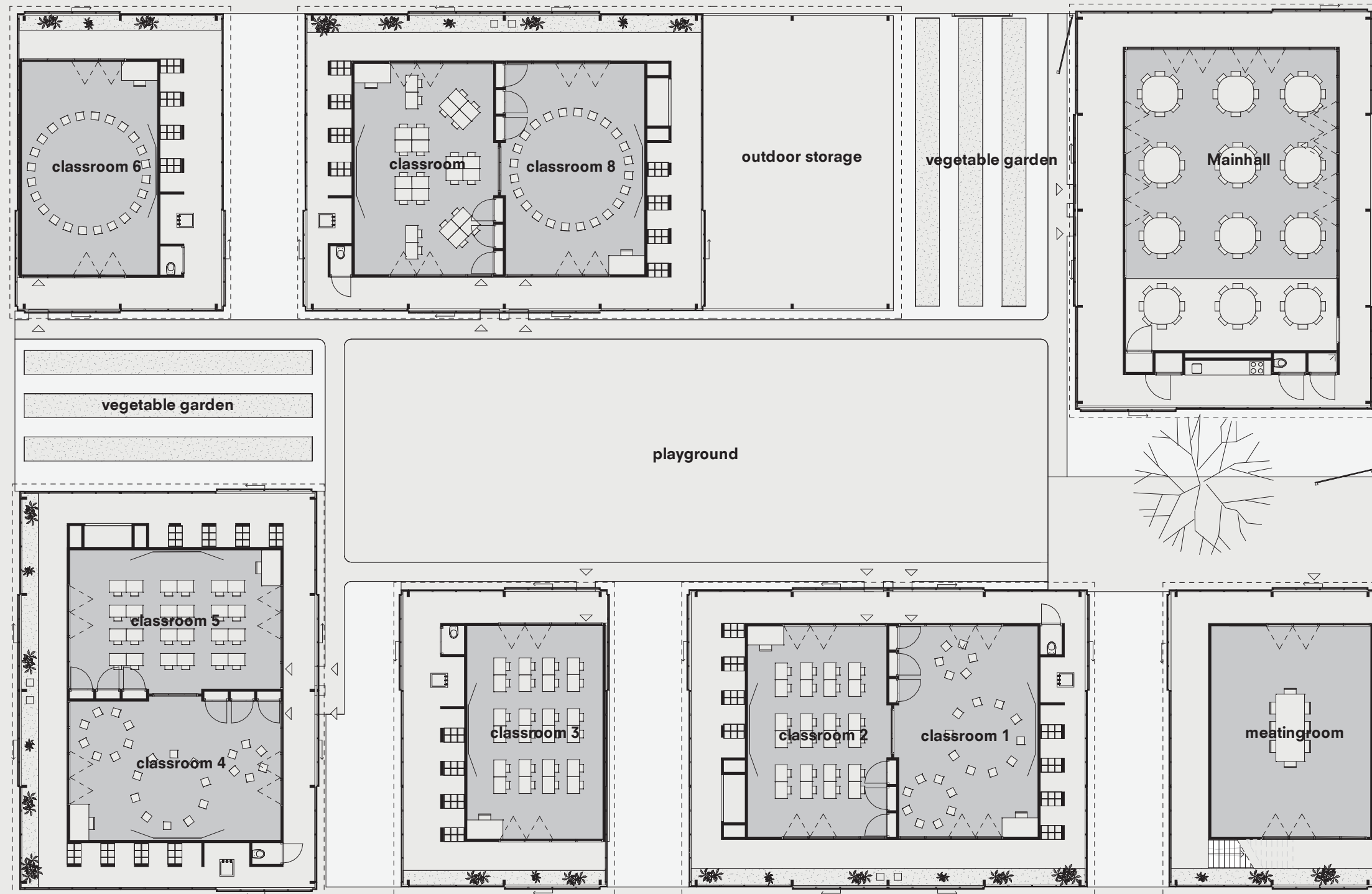
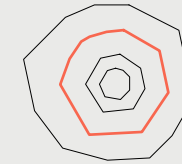
Boundaries

axonometric view

4. playground to neighborhood



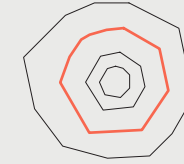




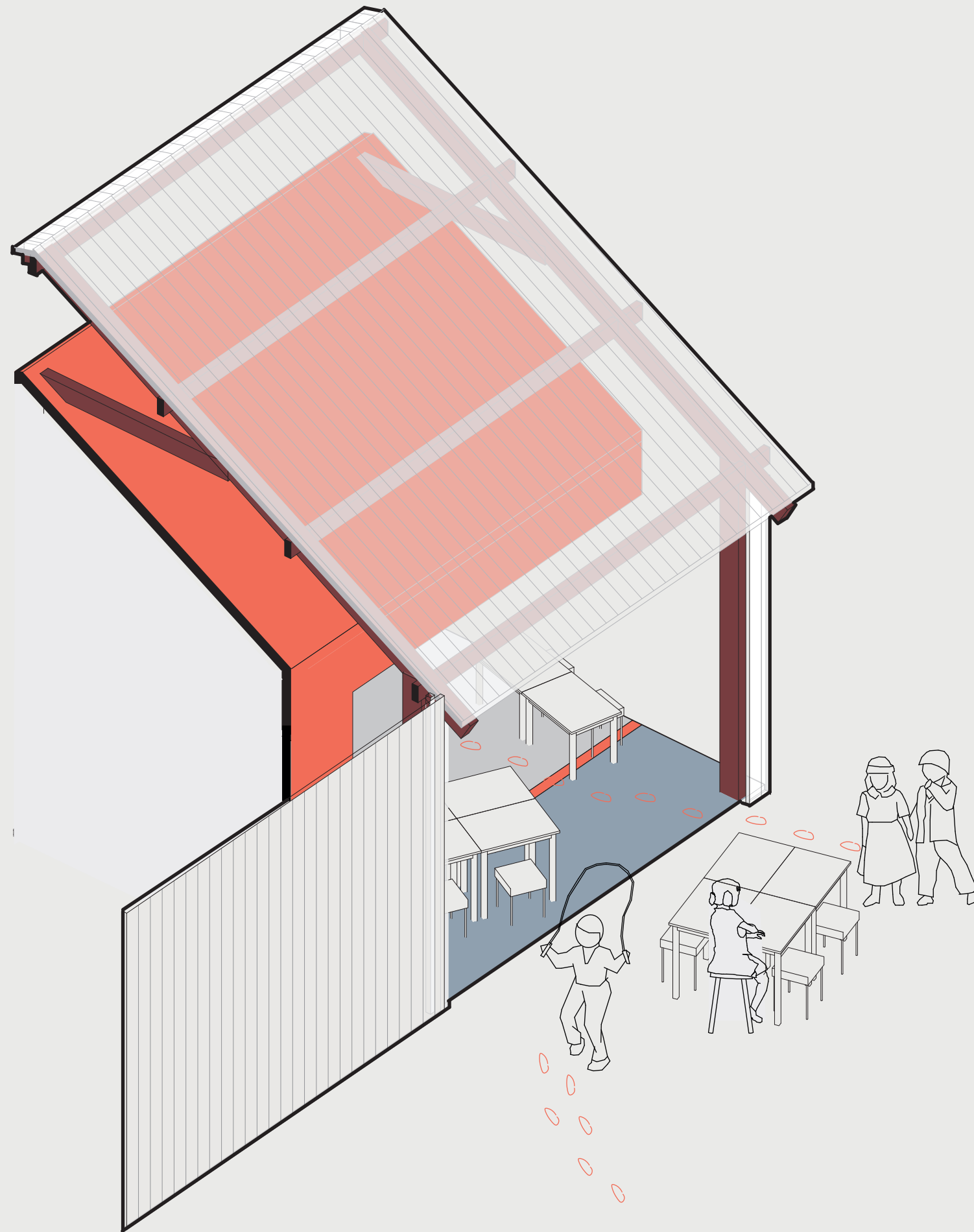
directors office
& staff room: up ^

Boundaries

axonometric view



3 school to playground

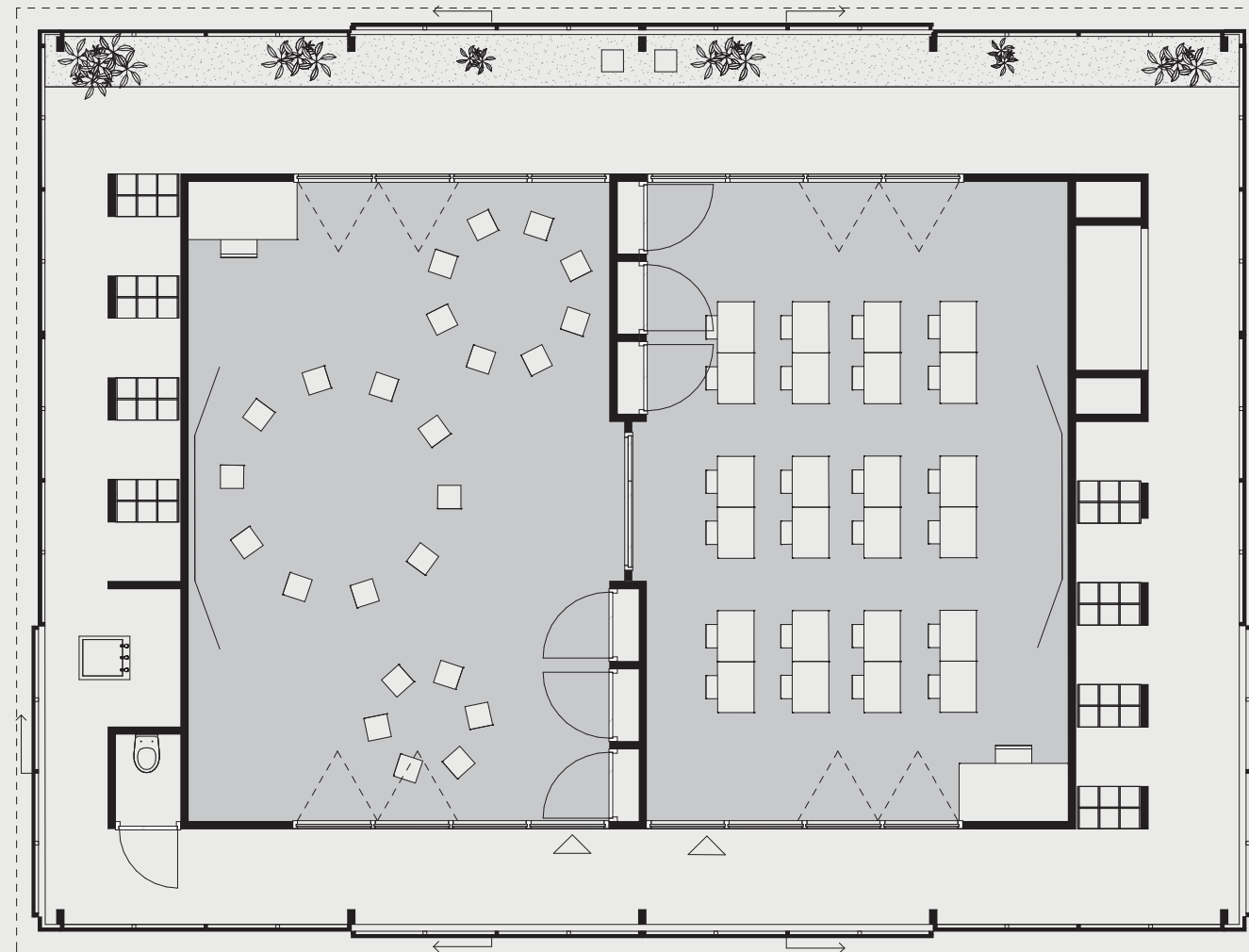
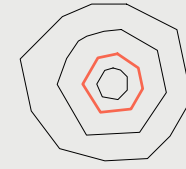




Plan

1-100

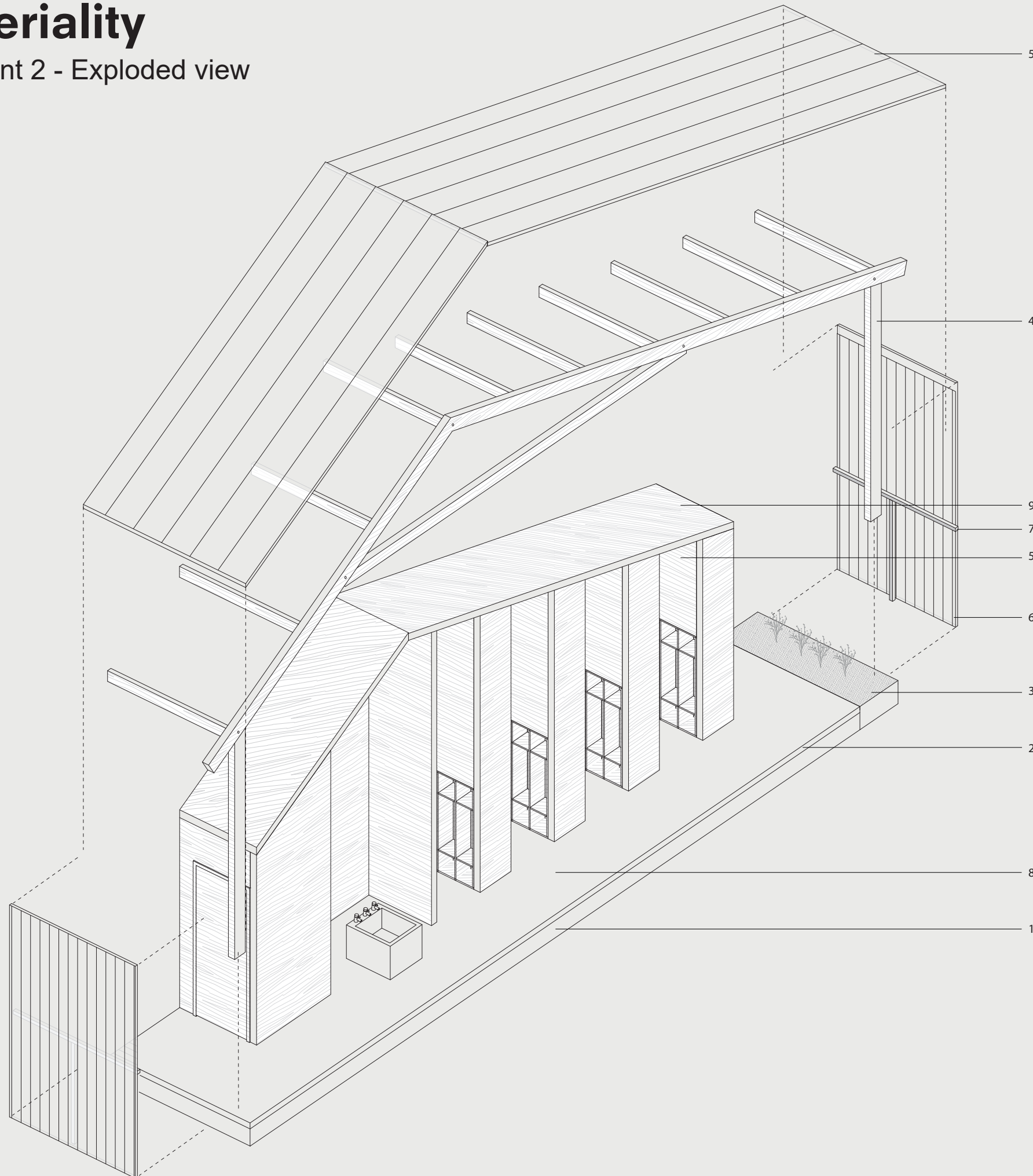
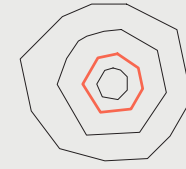
2 schoolto corridor



Materiality

Fragment 2 - Exploded view

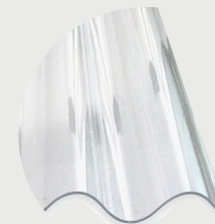
2 schoolto corridor



8 & 9 - CLT



2 - Concrete



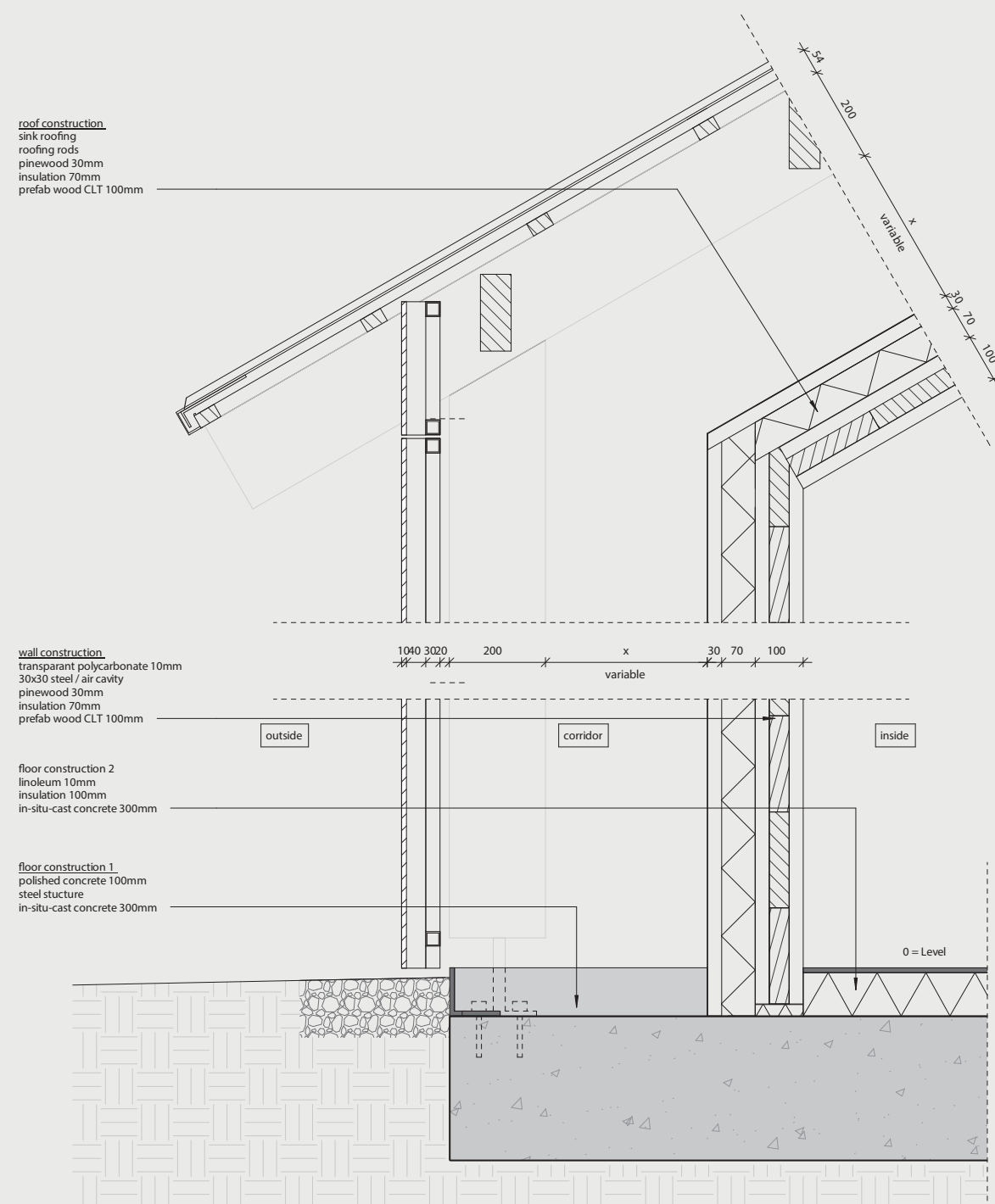
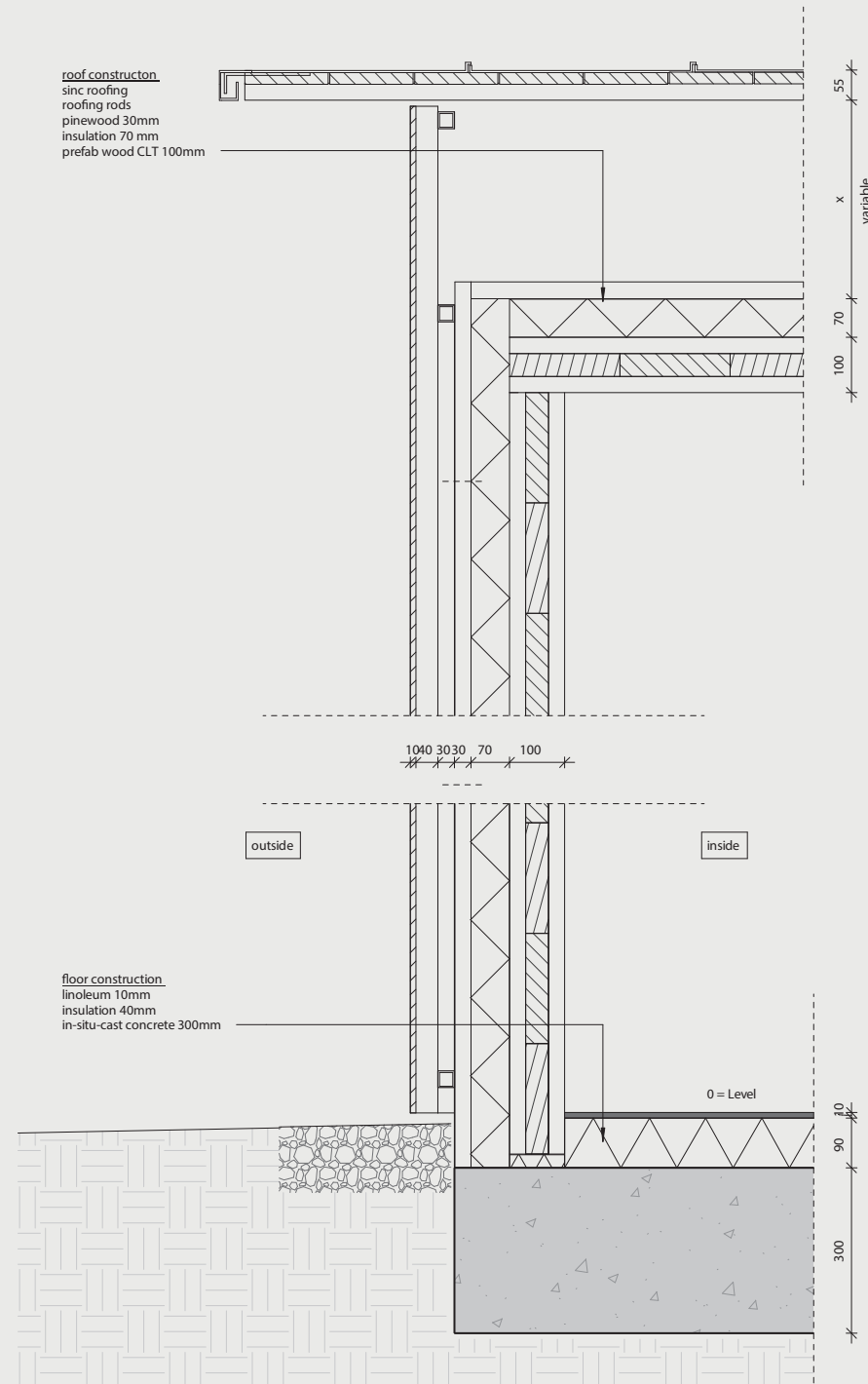
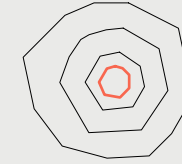
6 - Polycarbonate sheet

1. in-situ-cast concrete
2. polished concrete
3. soil for planting
4. load bearing wooden structure
5. seamed zinc roof
6. polycarbonate sheets
7. steel structure
8. prefab CLT wall with insulation
9. prefab CLT roof with insulation



Warm and Cold

1:10

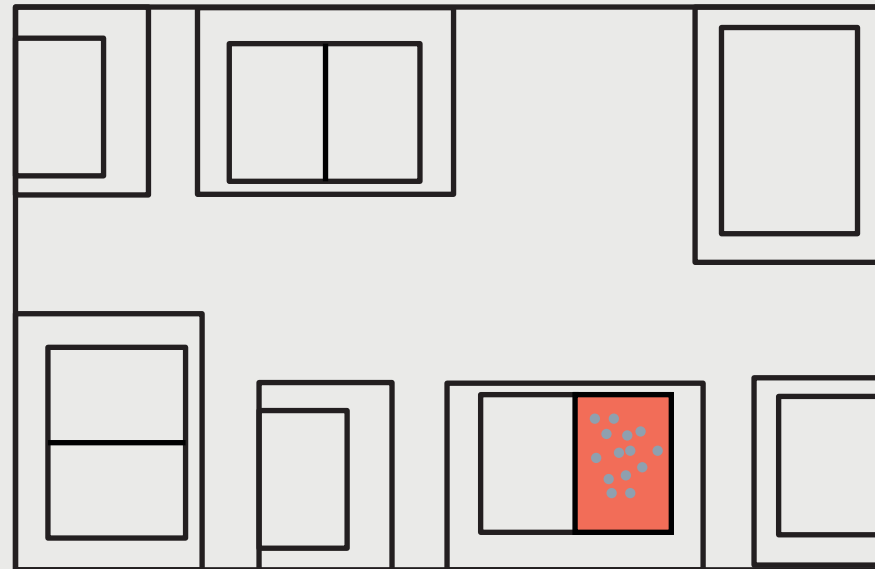
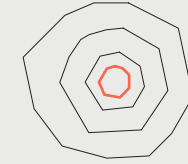




In- and outside

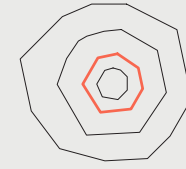
Diagrams

1 classroom to corridor

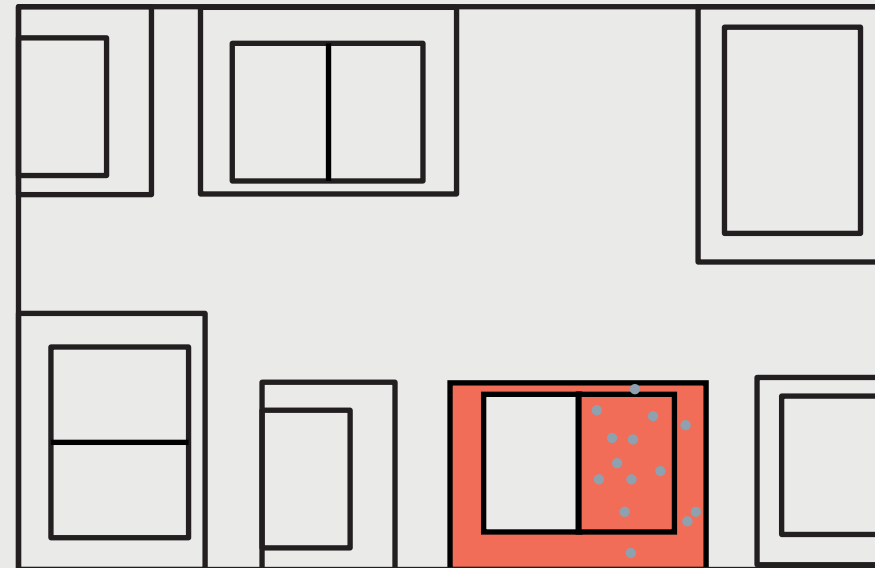


In- and outside

Diagrams

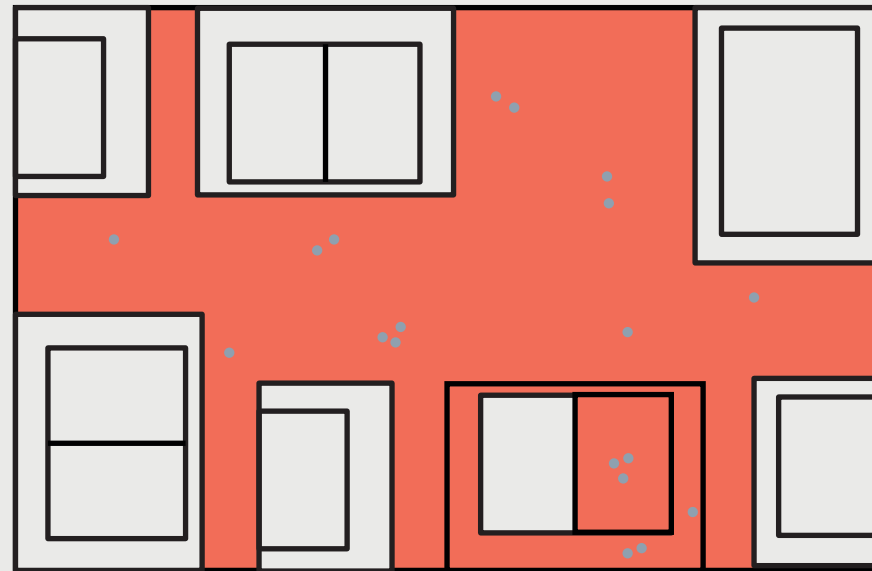
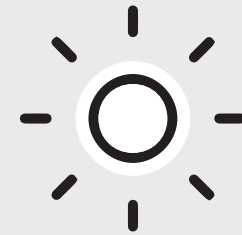
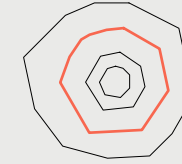


2 schoolto corridor



In- and outside

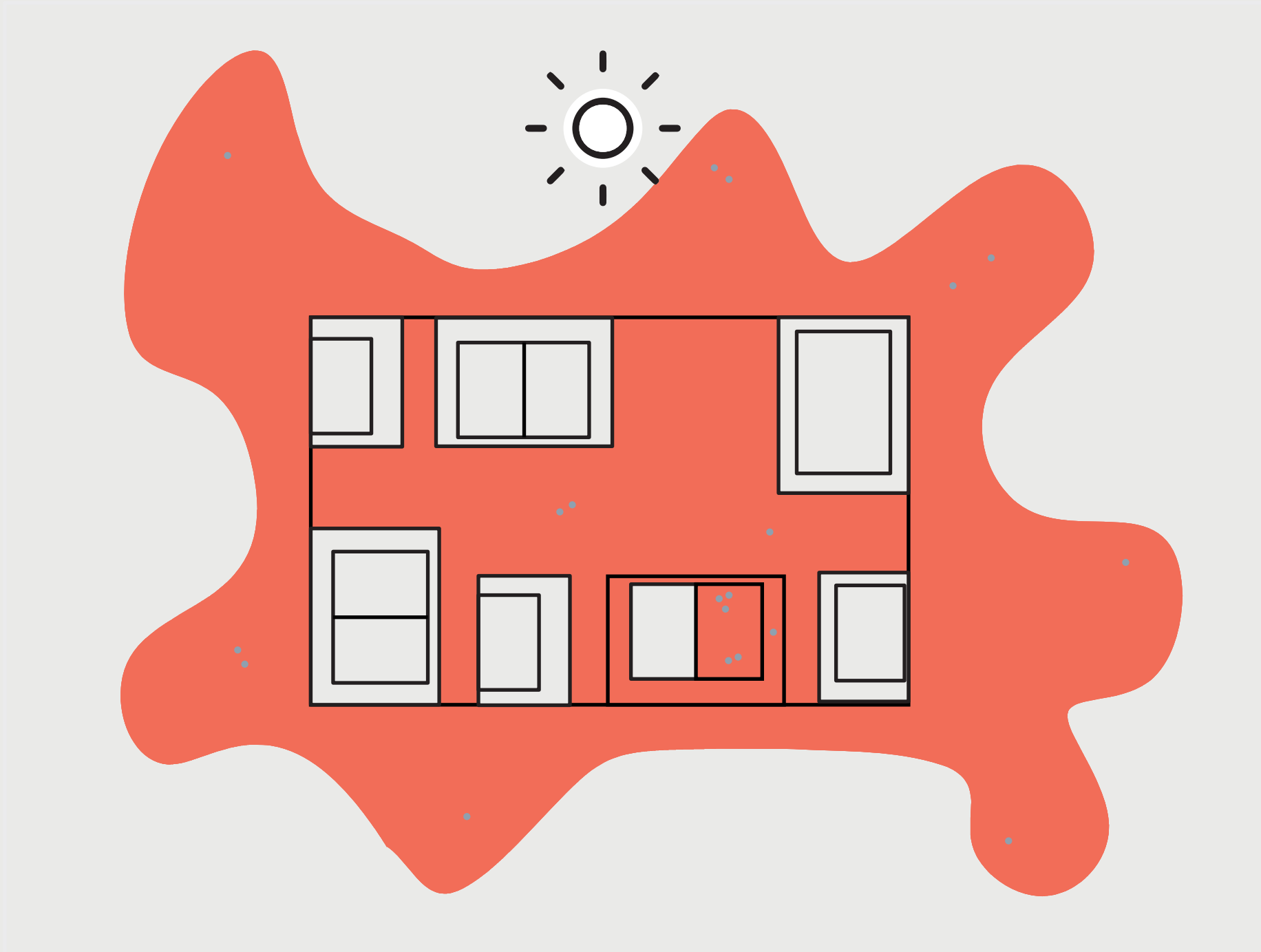
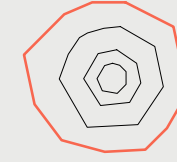
Diagrams



In- and outside

Diagrams

4. playground to neighborhood



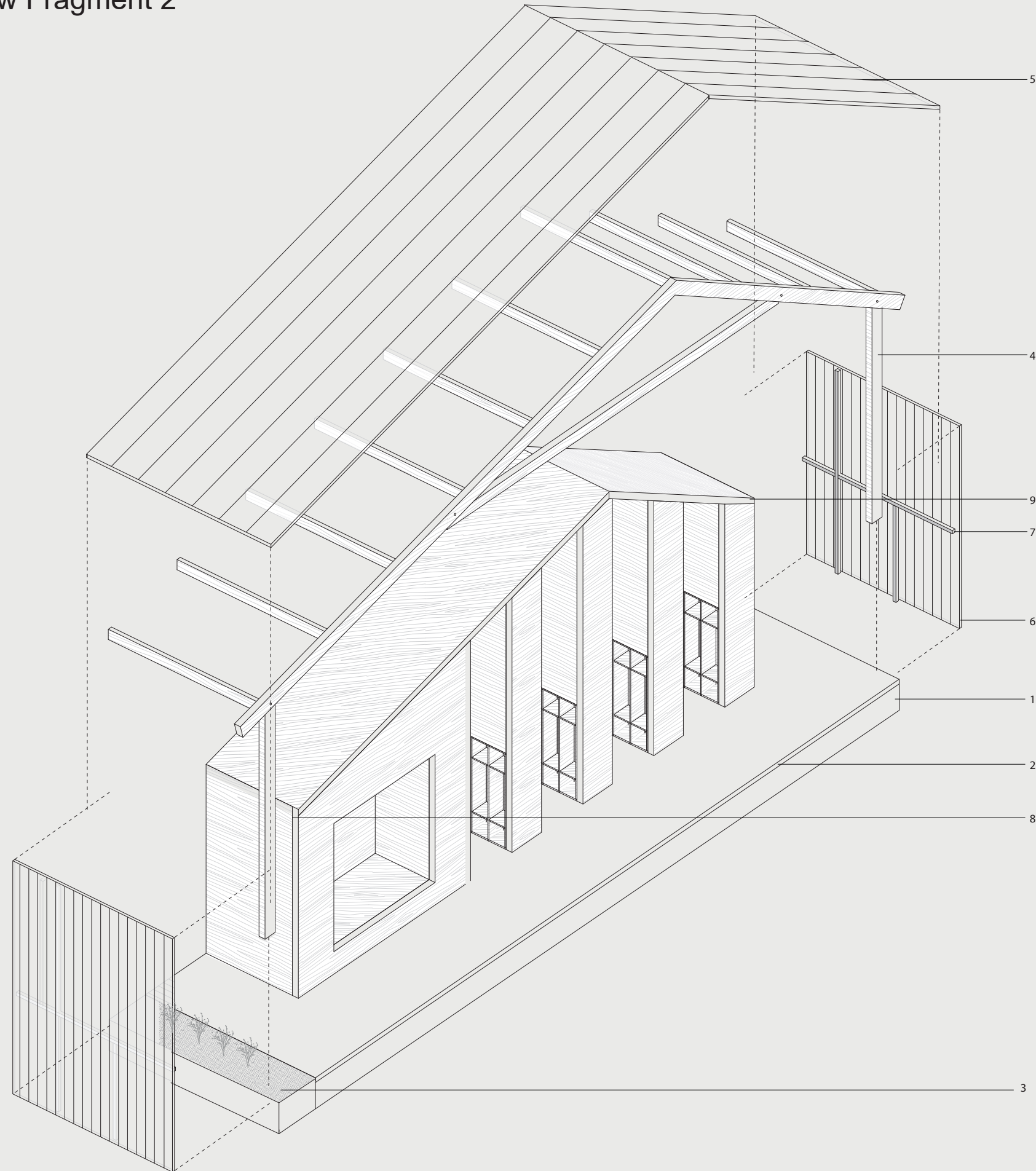
additional

work

Appendix including drawings
for Ernesto

Materiality

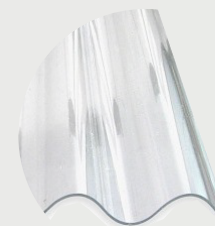
Exploded view Fragment 2



8 & 9 - CLT



2 - Concrete

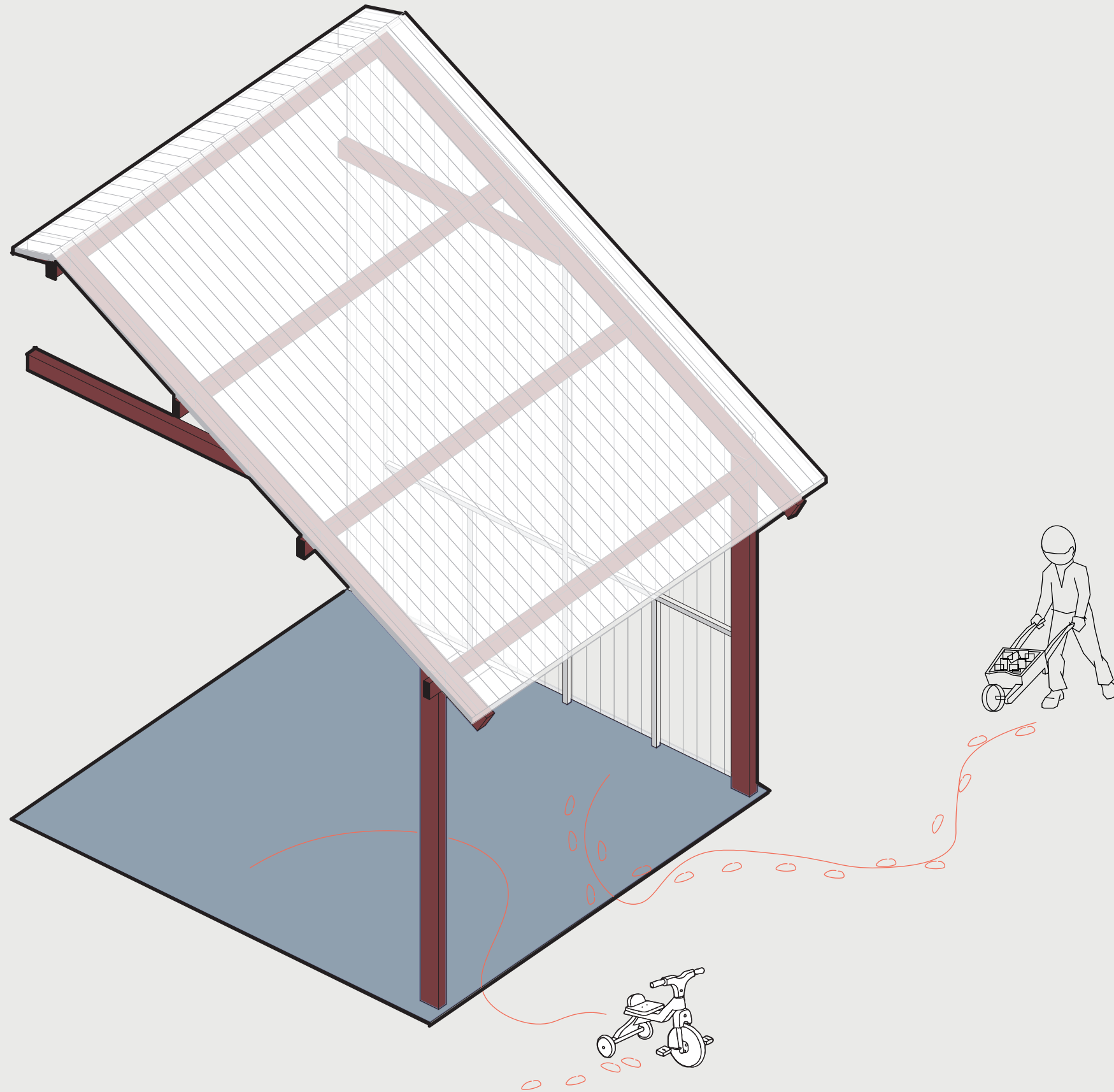


6 - Polycarbonate sheet

1. in-situ-cast concrete
2. polished concrete
3. soil for planting
4. loadbearing wooden structure
5. seamed sinc roof
6. polycarbonate sheets
7. steel structure
8. prefab CLT walls with insulation
9. prefab CLT roof with insulation

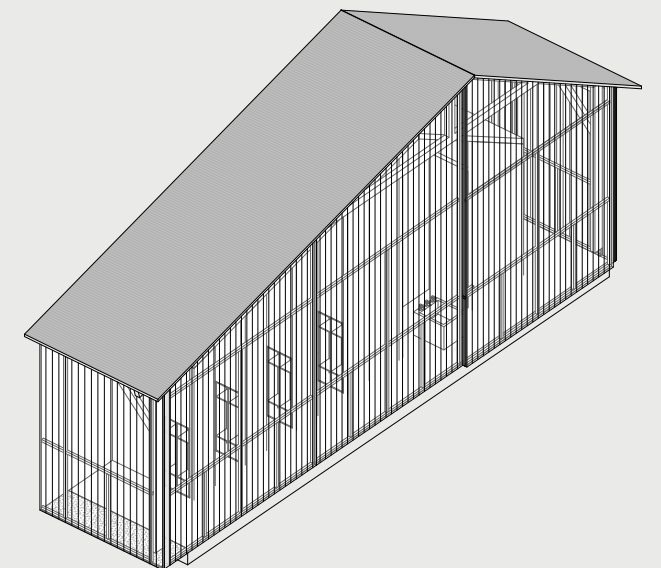
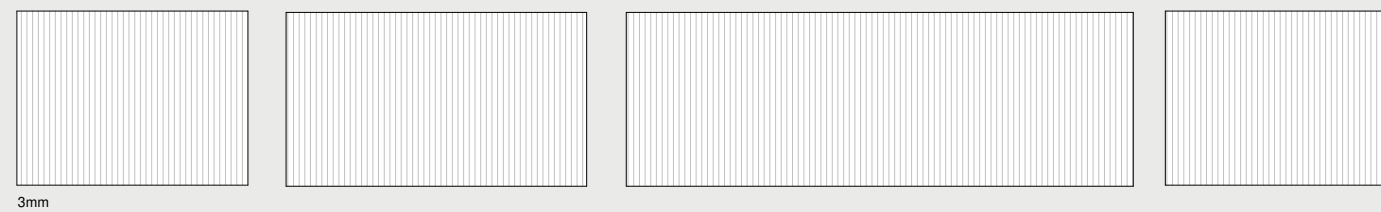
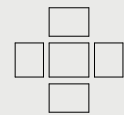
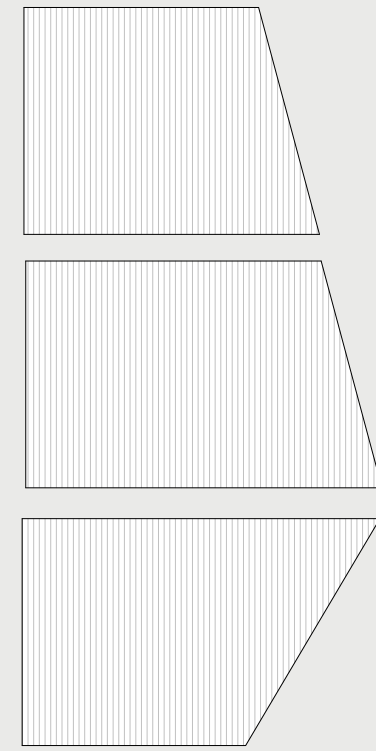
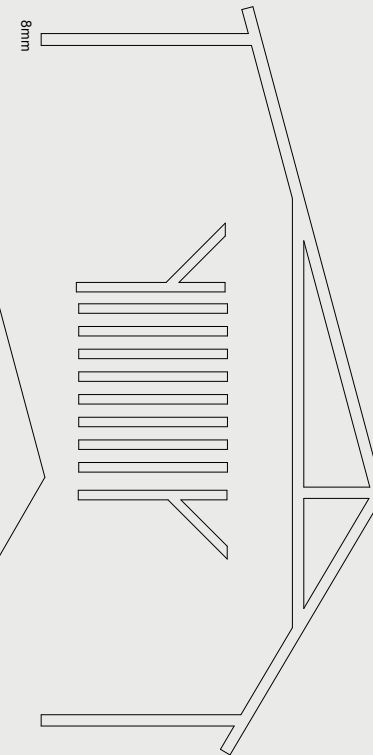
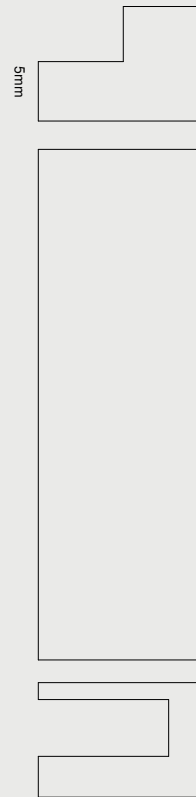
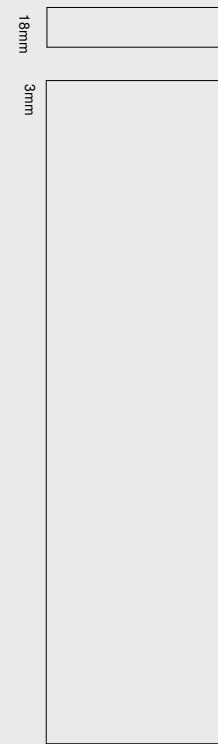
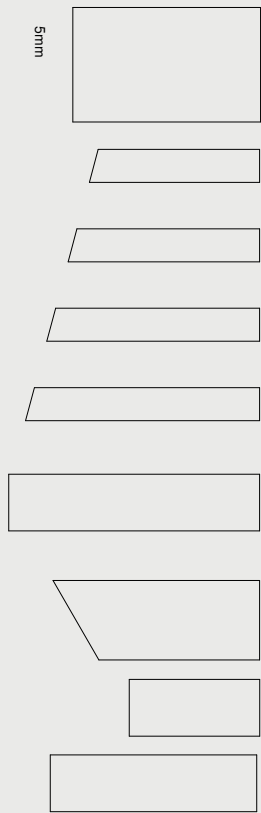
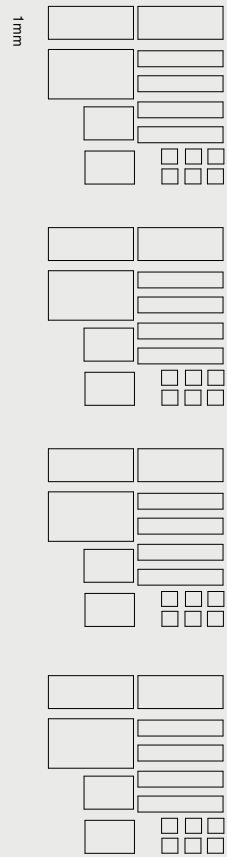
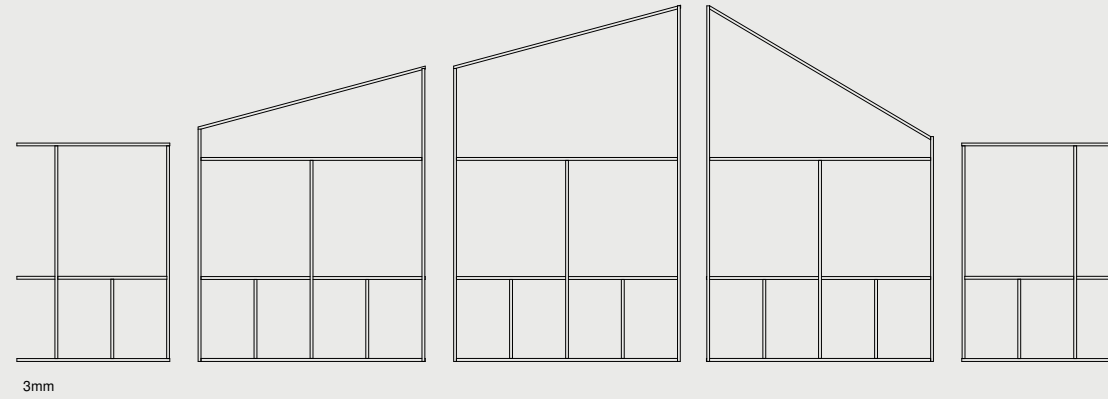
Boundaries

Axonometric view



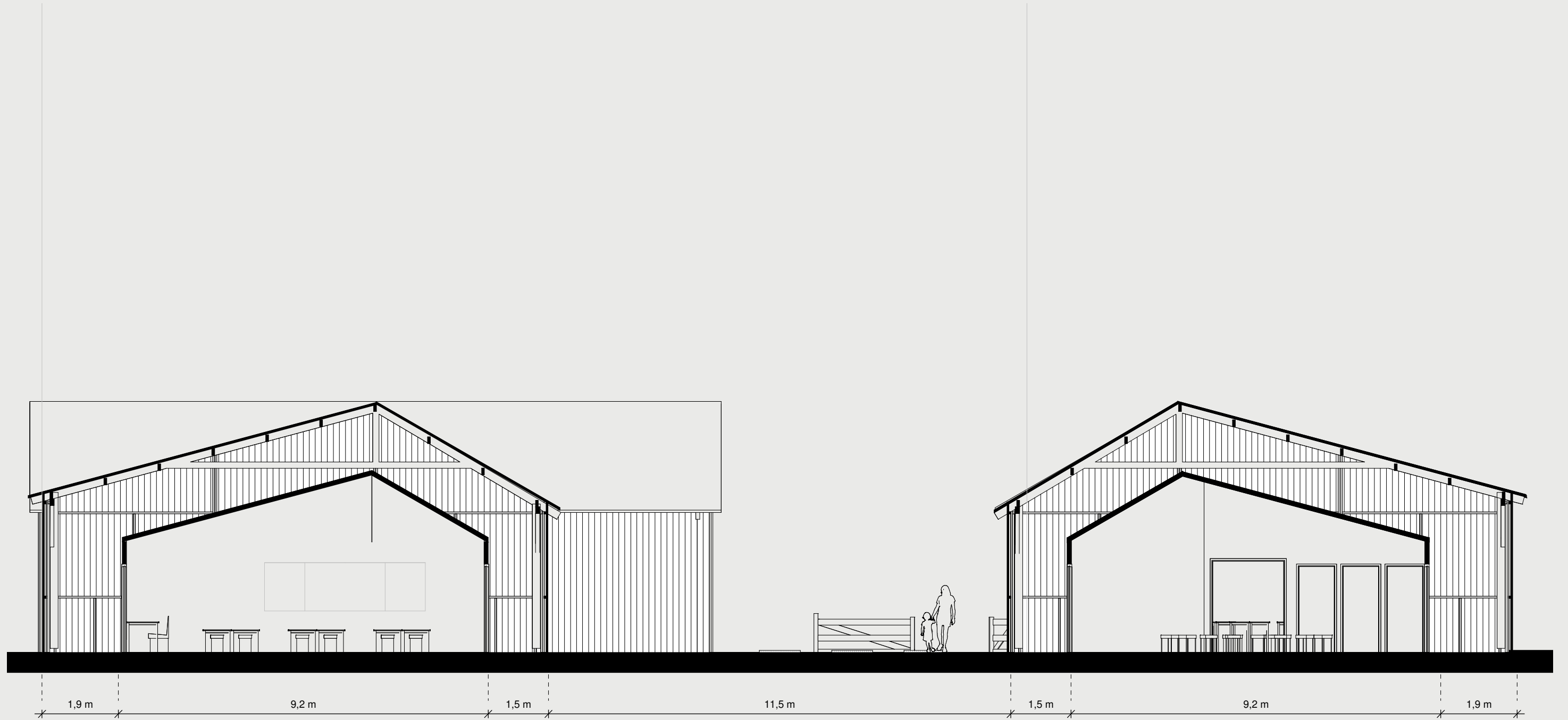
Model building package

Fragment 1



Section C

1-100



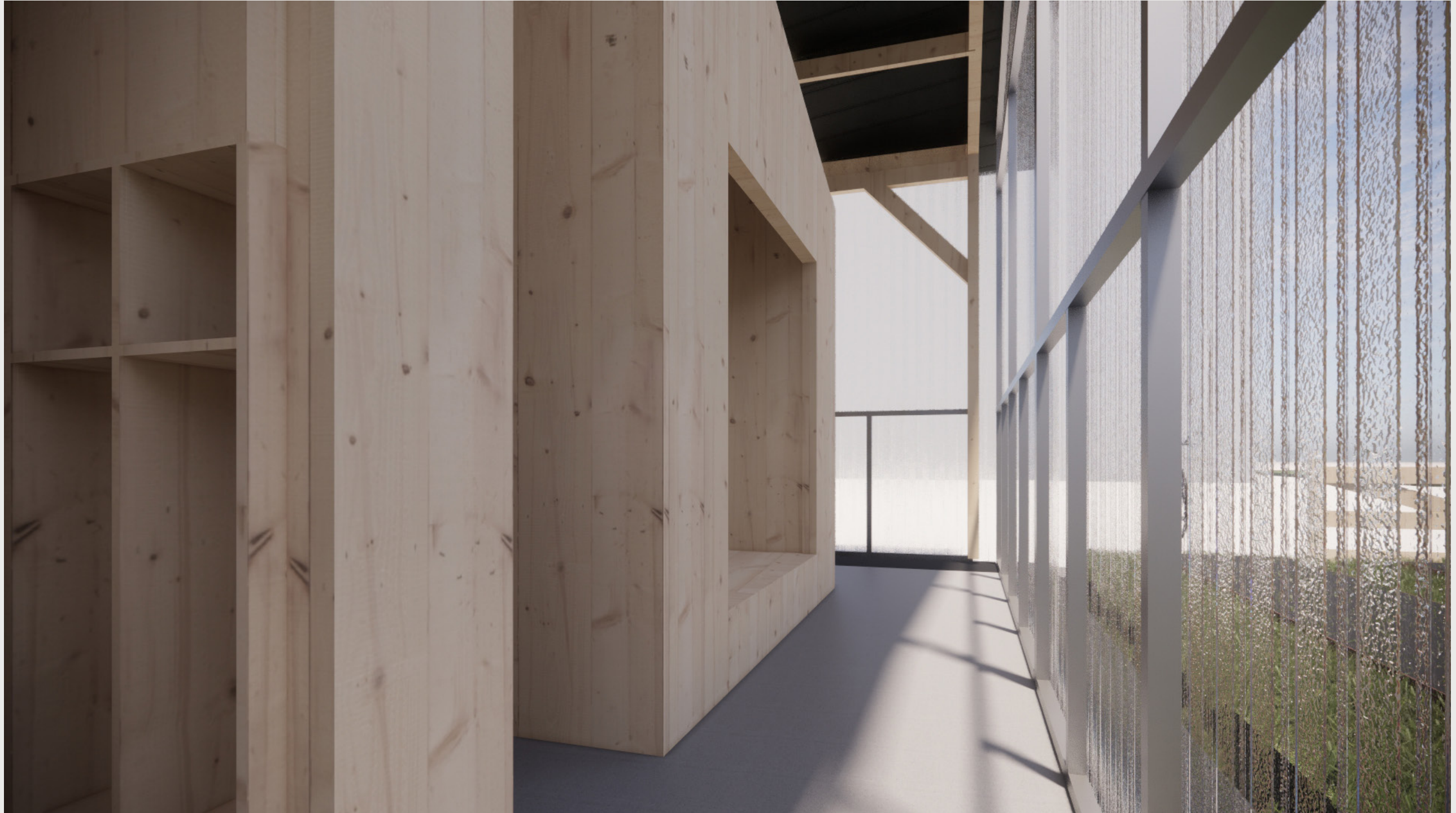
Section B

1:500



Learning moments

Eye height view



Learning moments

Eye height view



Teachers House

Eye height view



Extended double classroom building

Eye height view



Mainhall from upstairs

Eye height view

