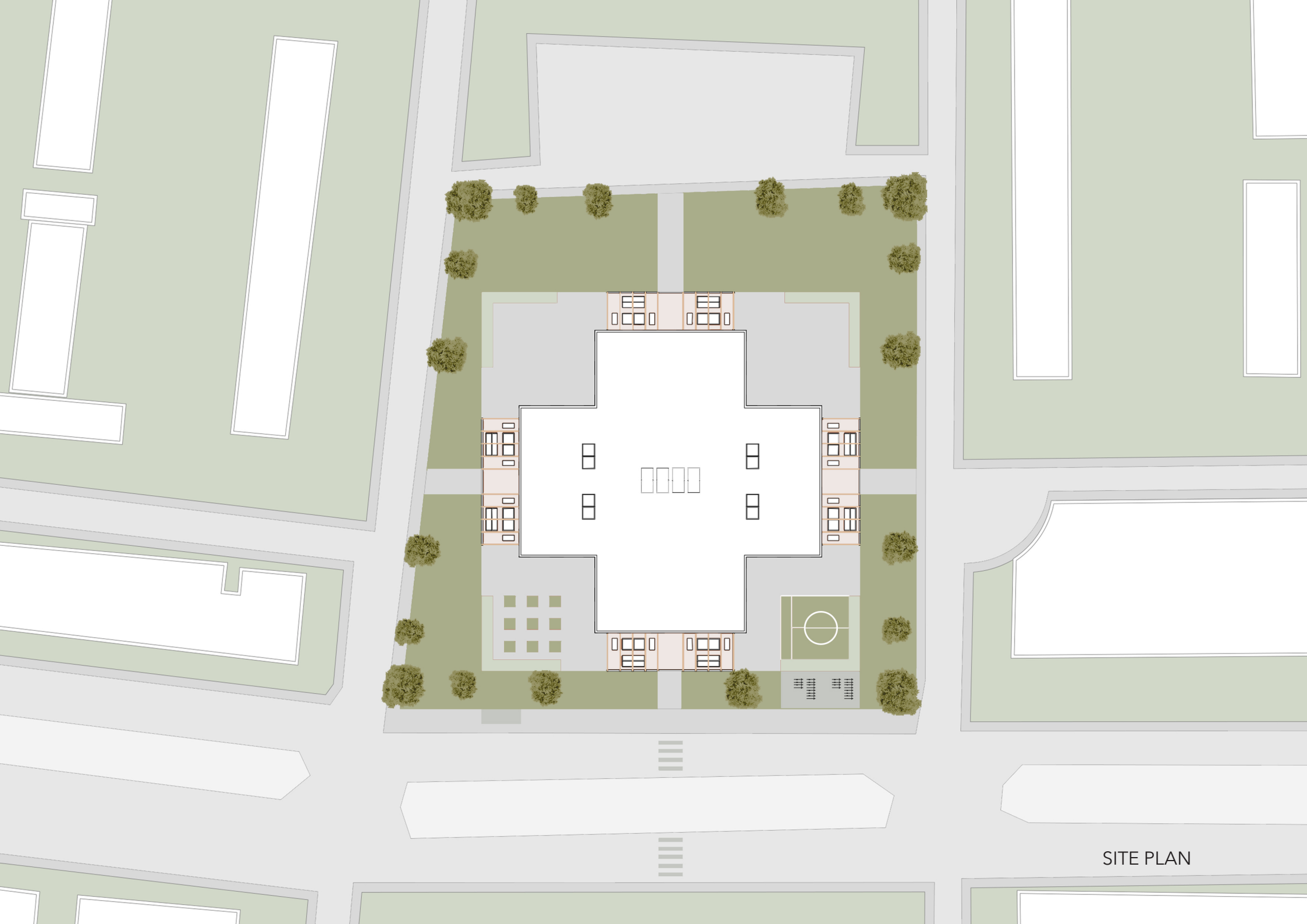


TWIN SCHOOL

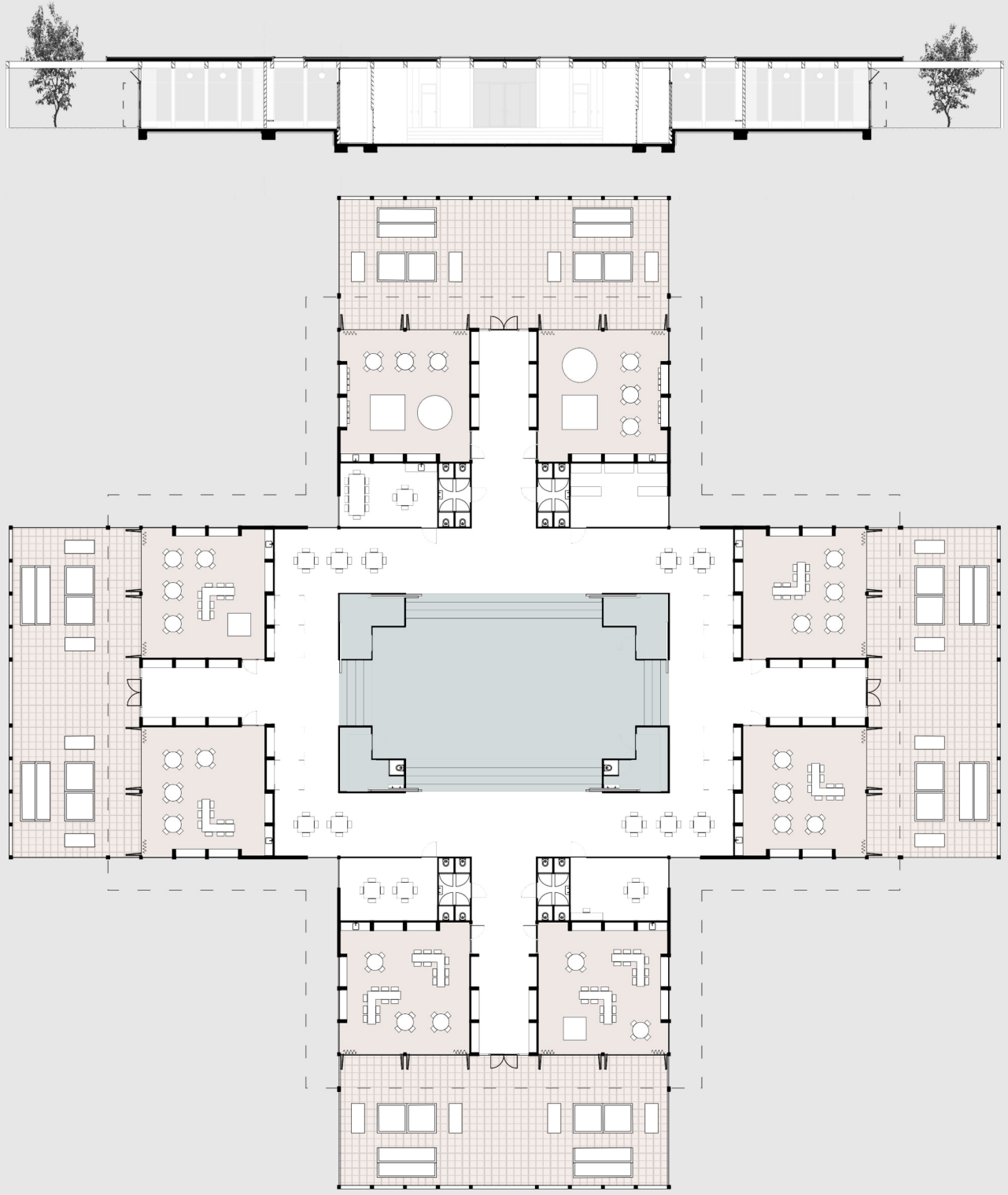


SCHOOL FOR THE TIMBER AGE
BY STUDIO NAUTA

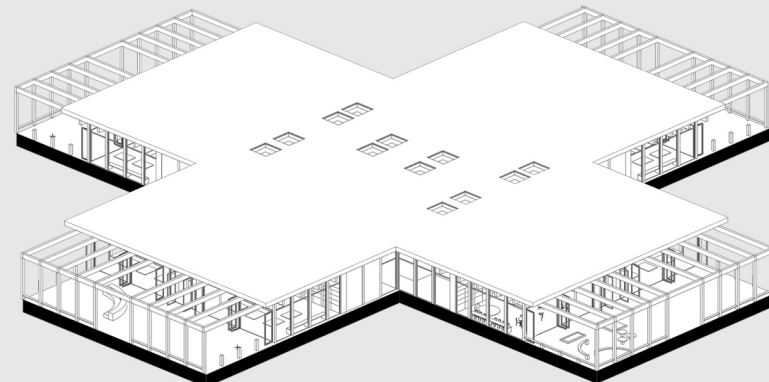
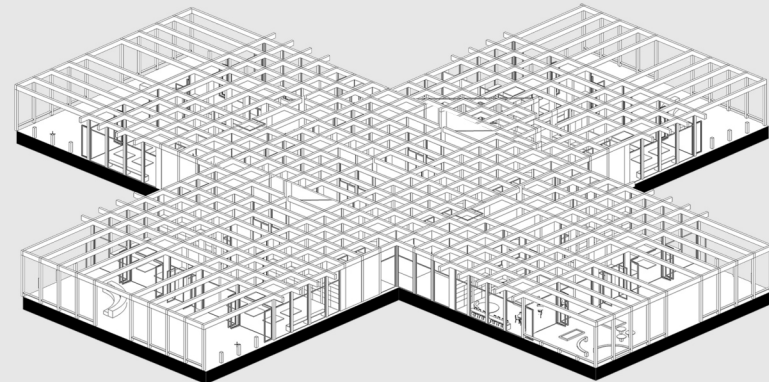
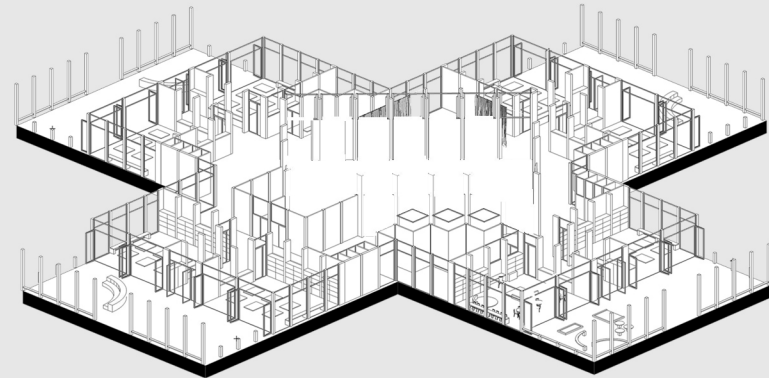
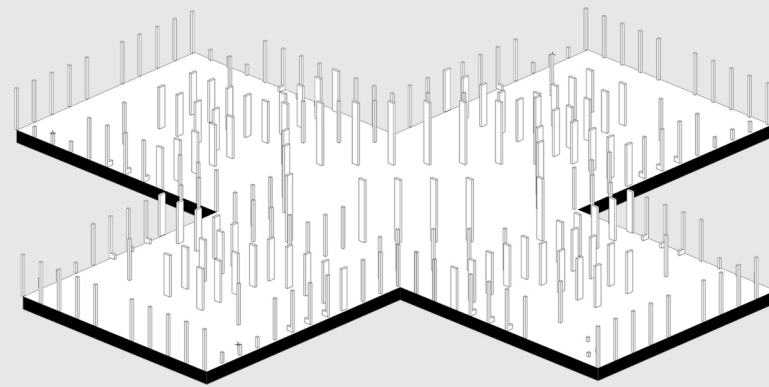
MILOU VAN ZOMEREN
ARCHITECTURE YEAR 1



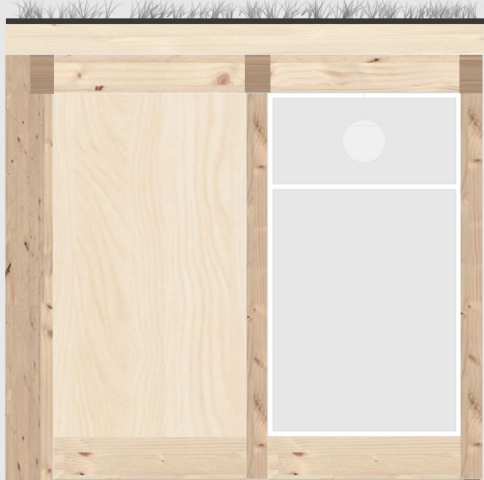
SITE PLAN



LAYOUT PLAN
SECTION



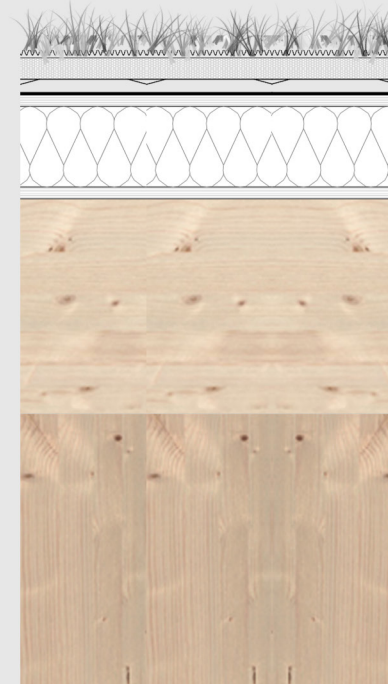
BEAM CONSTRUCTION



- 40 mm sedum
- 50 mm metal roof strip
- 400 mm wooden eaves finish
- 400 mm constructive beams

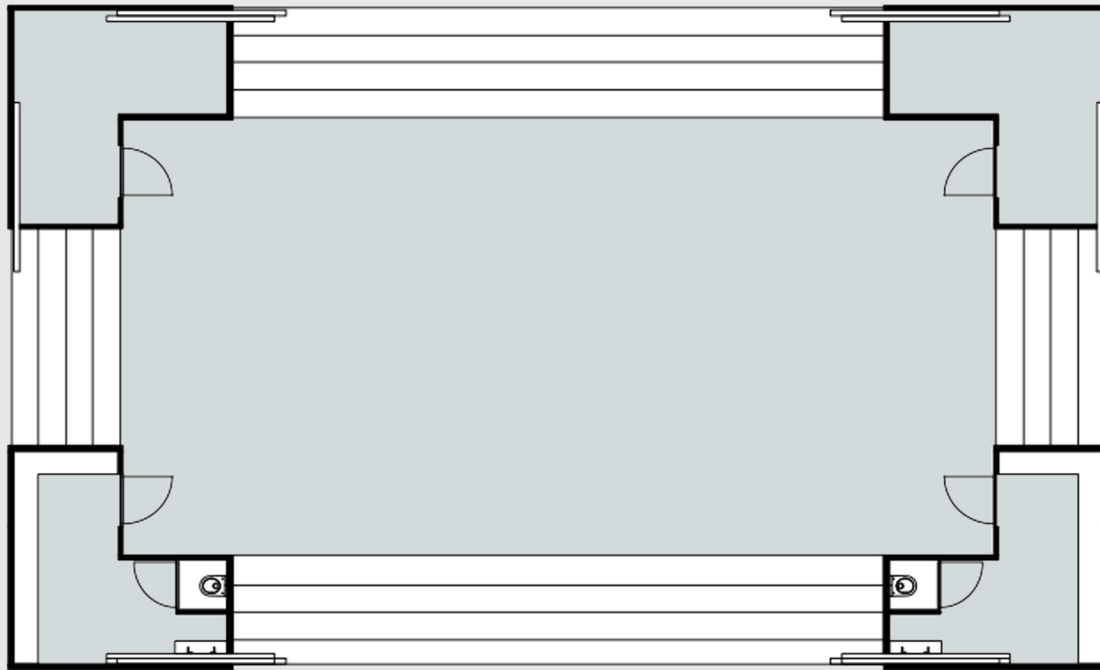
3600 mm impregnated wooden cladding

400 mm riser impregnated wood

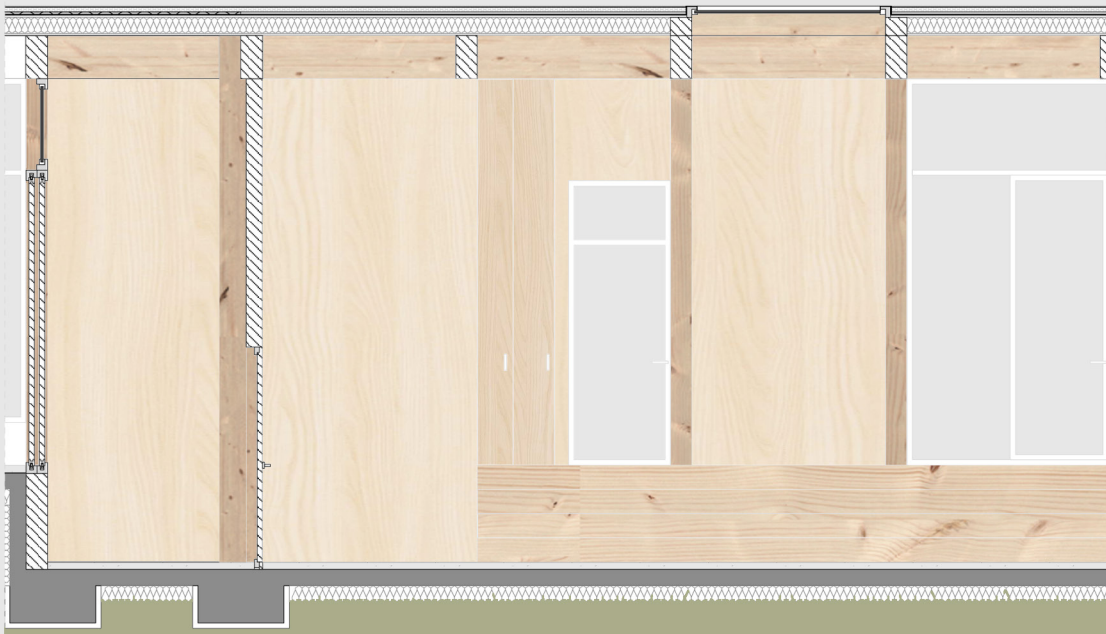


- 40 mm sedum
- 50 mm earth
- 0.5 mm sheet
- 30 mm water reservoir
- 0.5 mm waterproof sheet
- 22 mm multiplex
- 150 mm insulation
- 22 mm multiplex

400 mm gluelam beam



FASE 1
THEATER+GYMNASIUM
PLAN



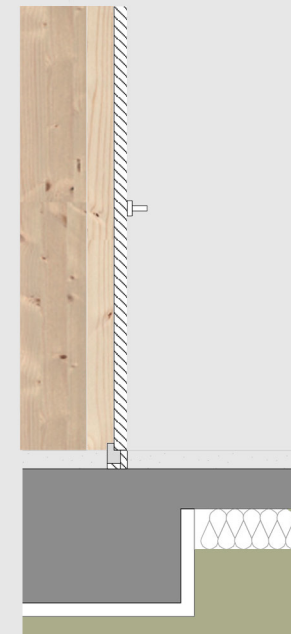
315 mm roof package
 400 mm constructive beam
 60 mm windowframe

800 mm window

60 mm windowframe

2680 mm glass door

200 mm stairs

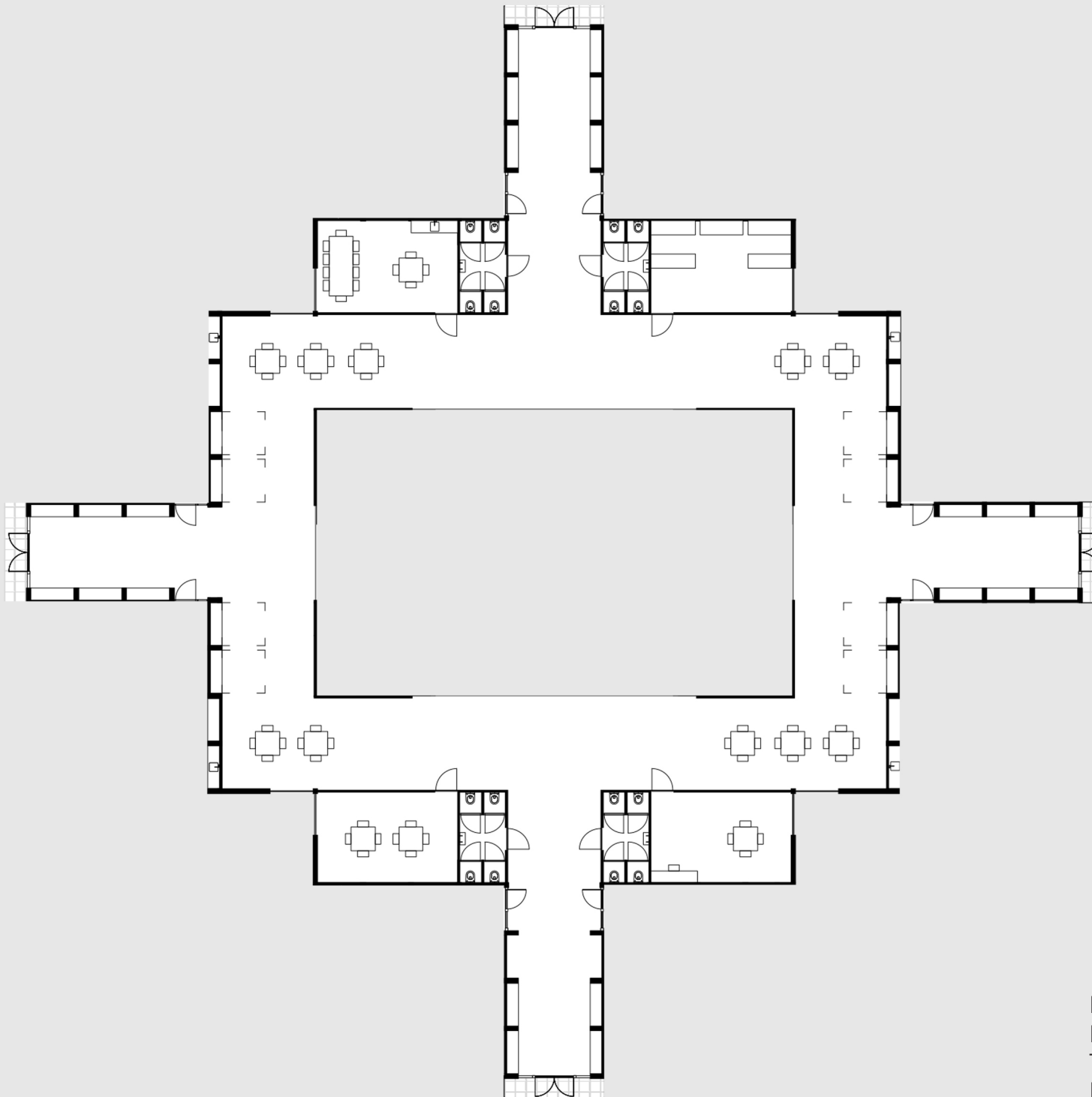


50 mm finishing floor
 100 mm concrete floor
 120 mm insulation

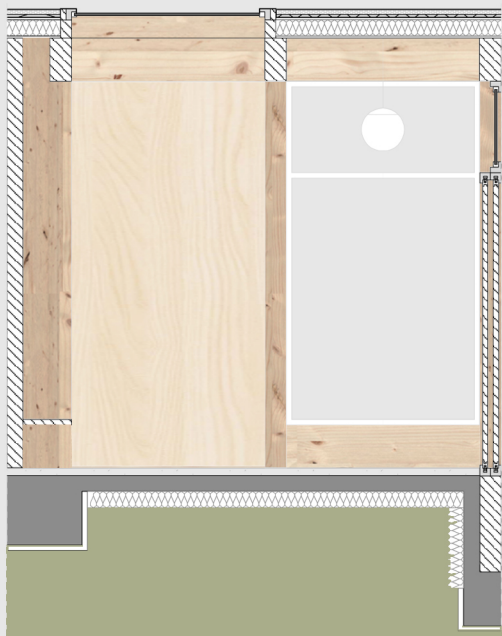
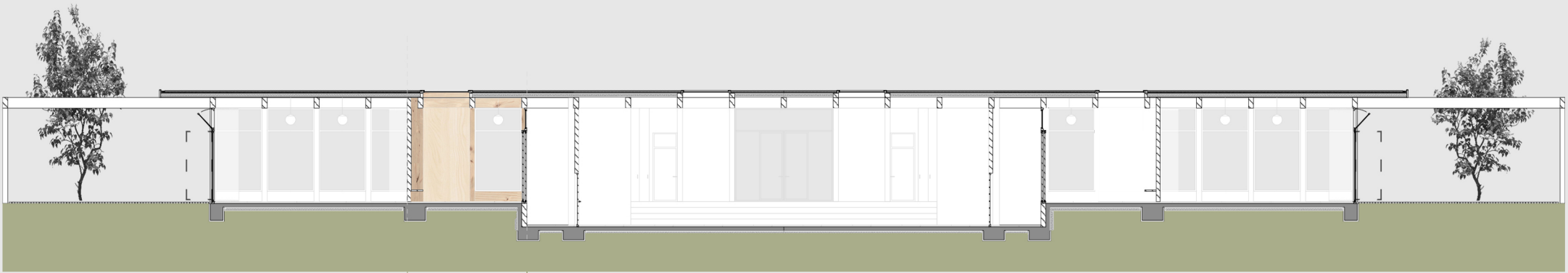
FASE 1
 THEATER+GYMNASIUM
 SECTION



FASE 1
THEATER+GYMNASIUM
AXONOMETRY



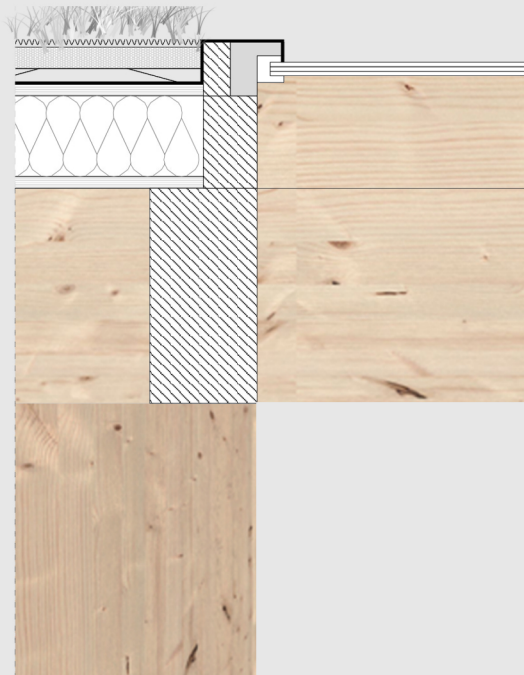
FASE 2
HALWAY +
TEACHERS DOMAIN
PLAN



30 mm triple glass window
60 mm steel windowframe

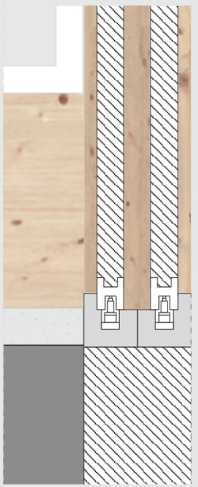
800 mm window

2600 mm wooden sliding doors



30 mm triple glass window
60 mm steel windowframe

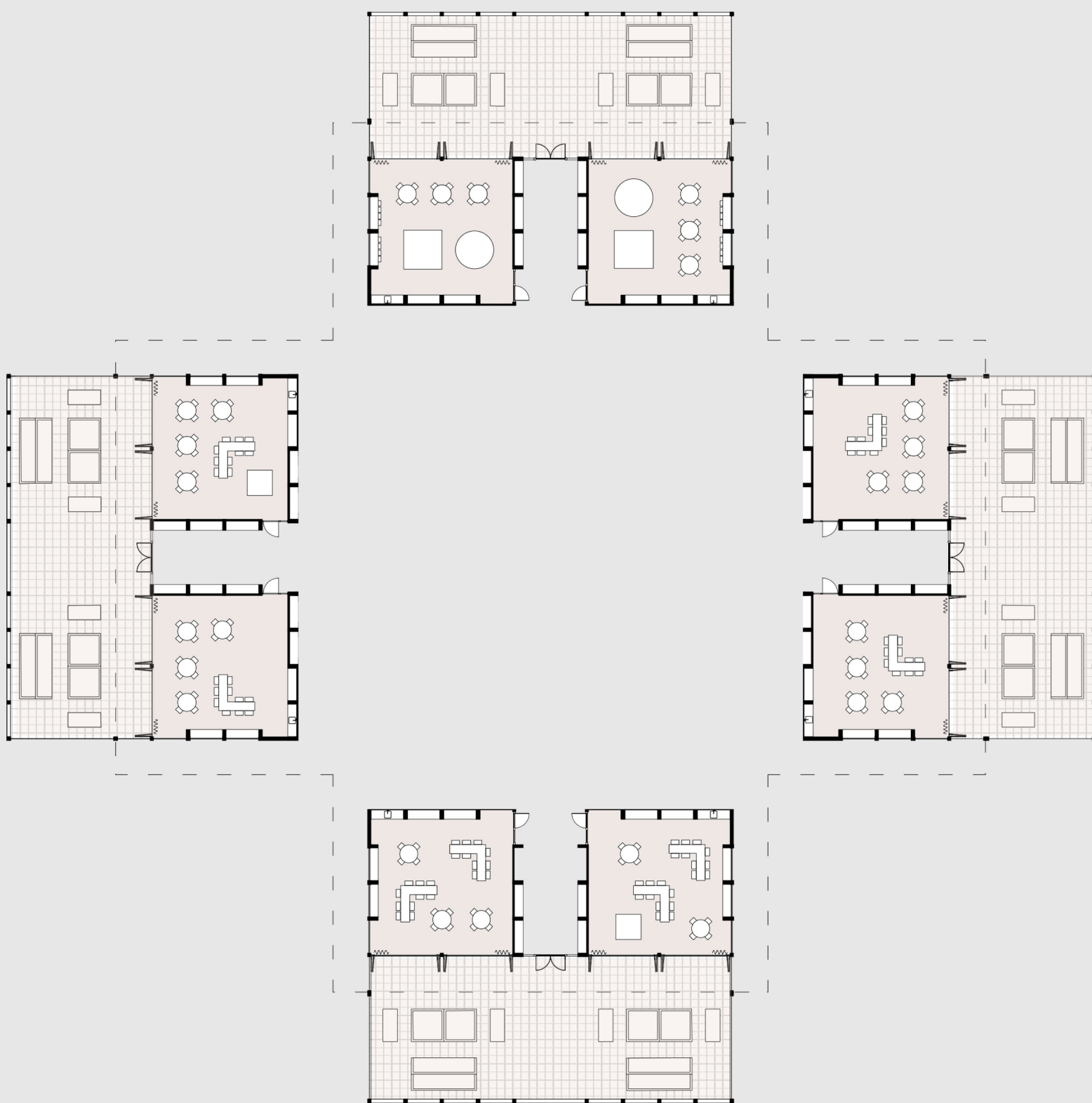
50 mm plywood shifting door
100 mm steel sliding frame



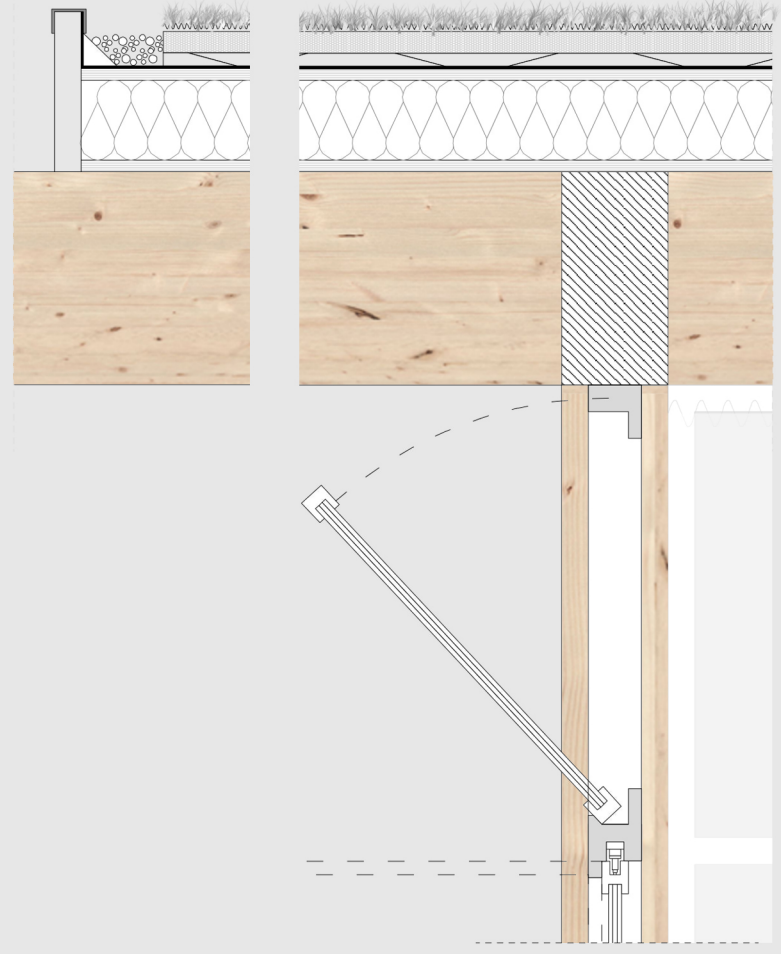
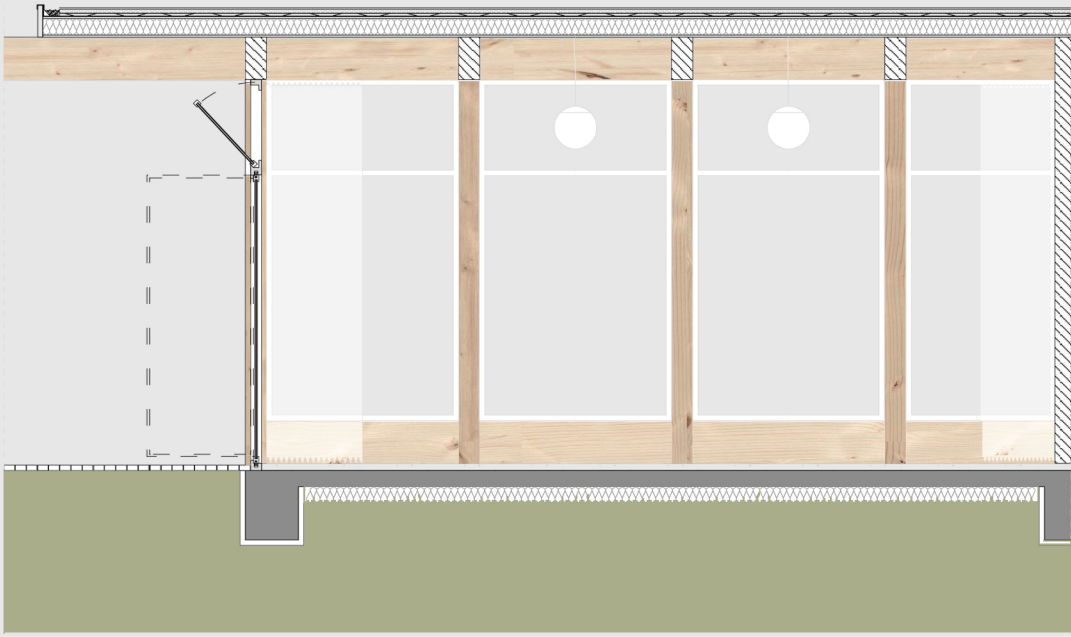
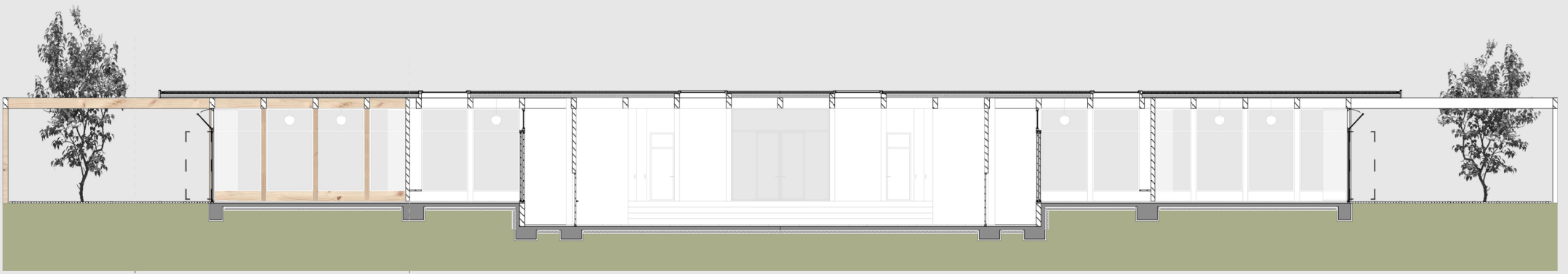
FASE 2
HALWAY +
TEACHERS DOMAIN
SECTION



FASE 2
HALWAY +
TEACHERS DOMAIN
AXONOMETRY



FASE 3
TWIN
CLASSROOMS
PLAN



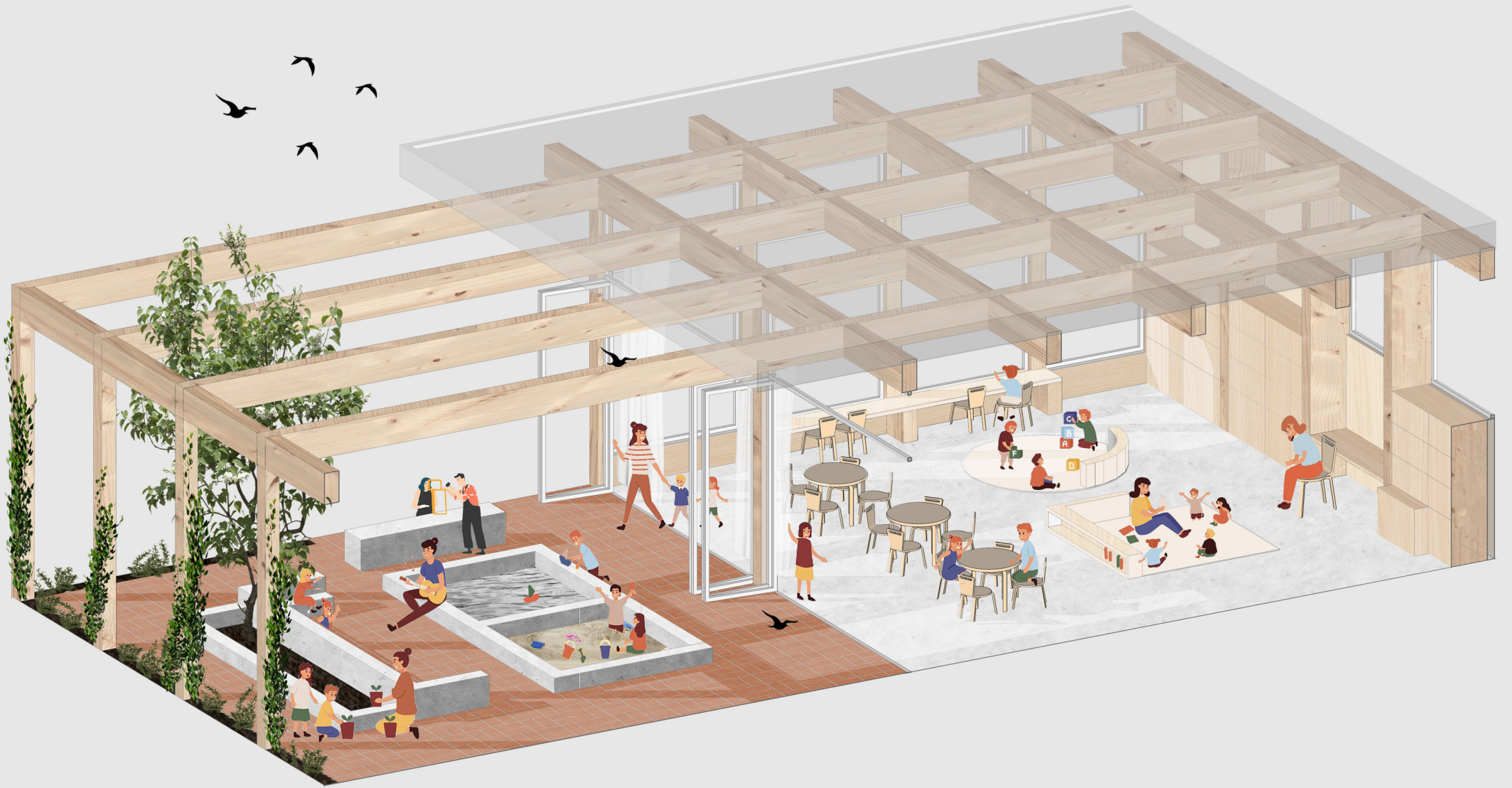
- 40 mm sedum
- 50 mm earth
- 0.5 mm sheet
- 30 mm waterreservoir
- 0.5 mm waterproof sheet
- 22 mm multiplex
- 150 mm insulation
- 22 mm multiplex

400 mm gluelam beam

60 mm windowframe

800 mm ventilation window

FASE 3
TWIN
CLASSROOMS
SECTION



FASE 3
TWIN
CLASSROOMS
AXONOMETRY

THANK YOU!

SCHOOL FOR THE TIMBER AGE
BY STUDIO NAUTA

MILOU VAN ZOMEREN
ARCHITECTURE YEAR 1