

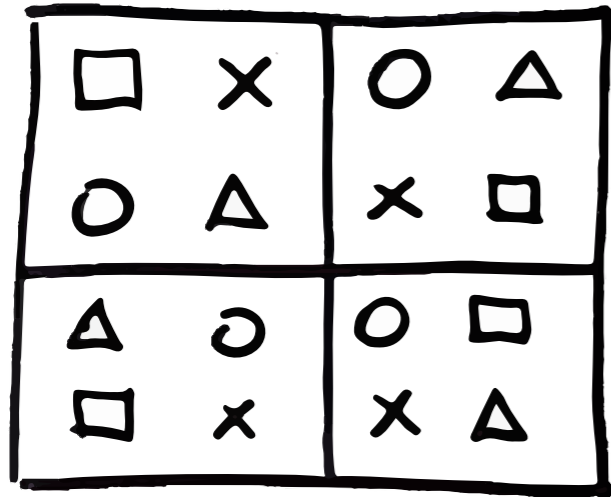
School with community sense

Let's meet in the South, see you in the middle.

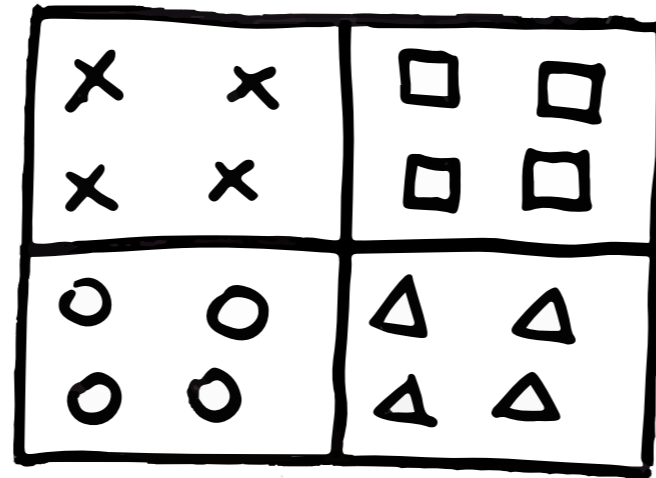
**Not only a School but a meeting place for the neighbourhood.
A place to bond and grow together.**



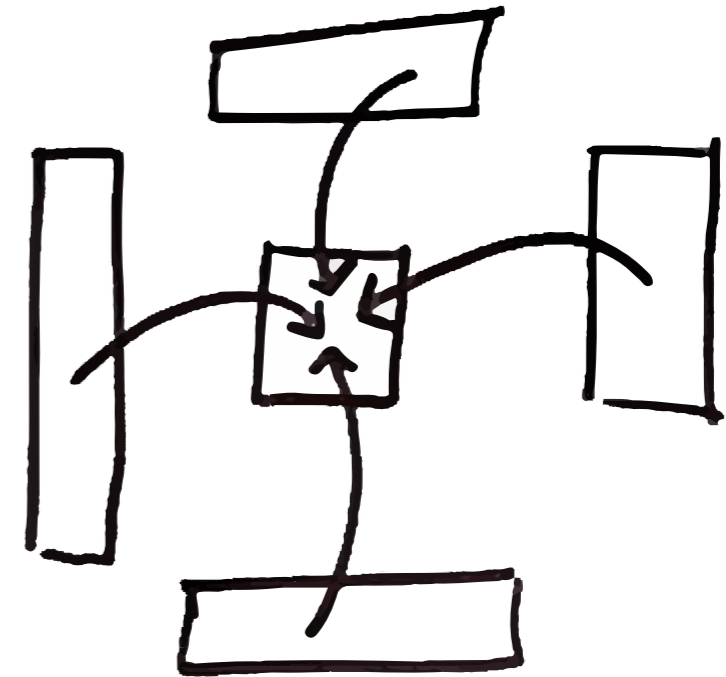
Zuidwijk Fragmented



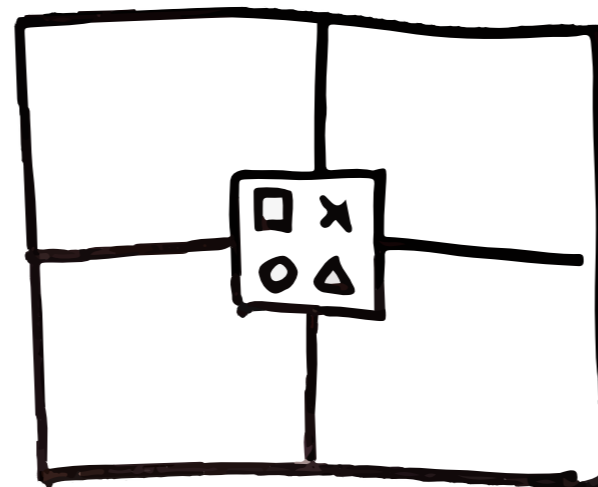
Zuidwijk Subdivided

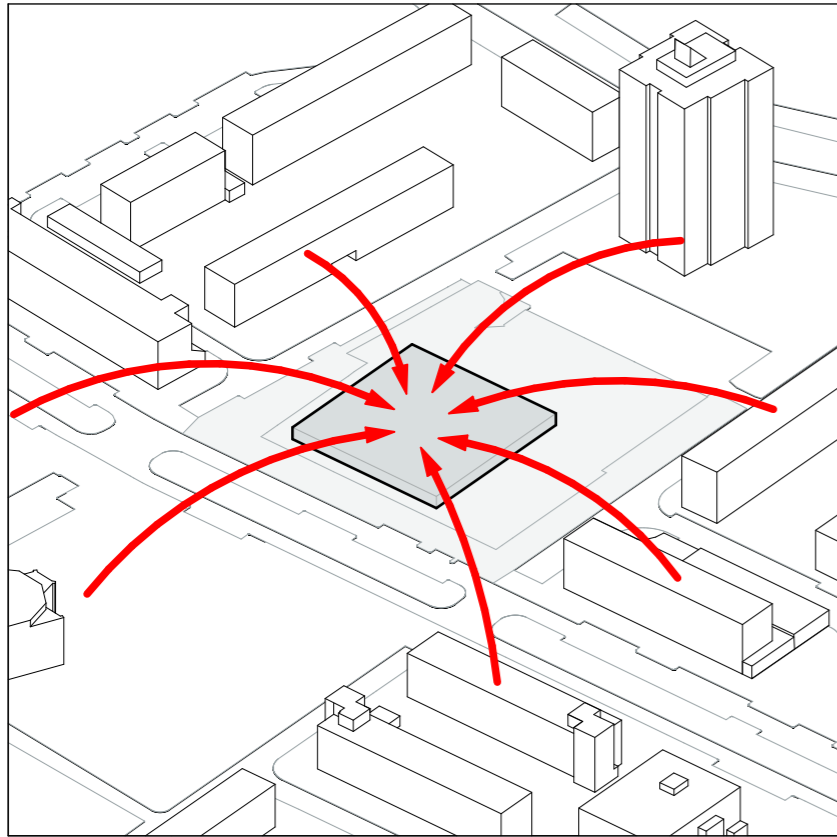


School as neutral meeting point

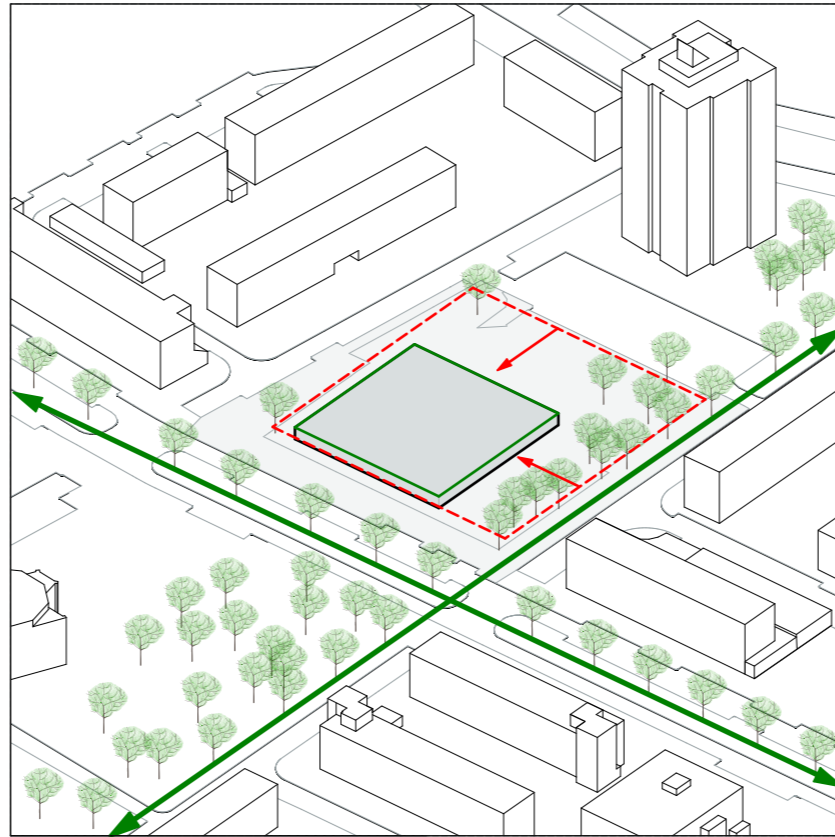


Zuidwijk Unified

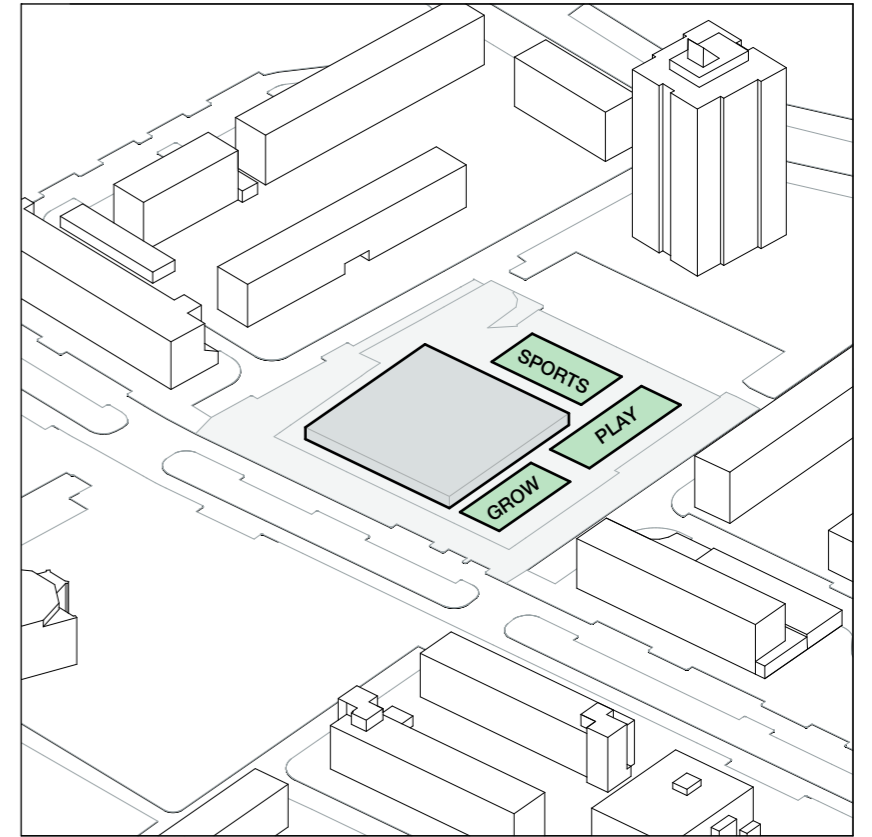




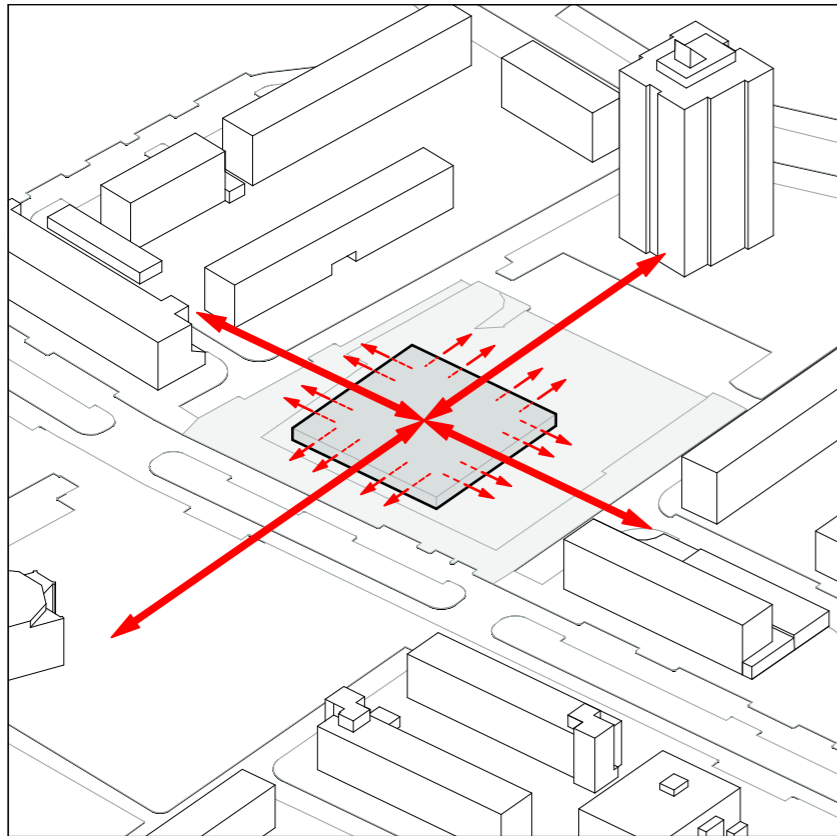
School with neighbourhood participation



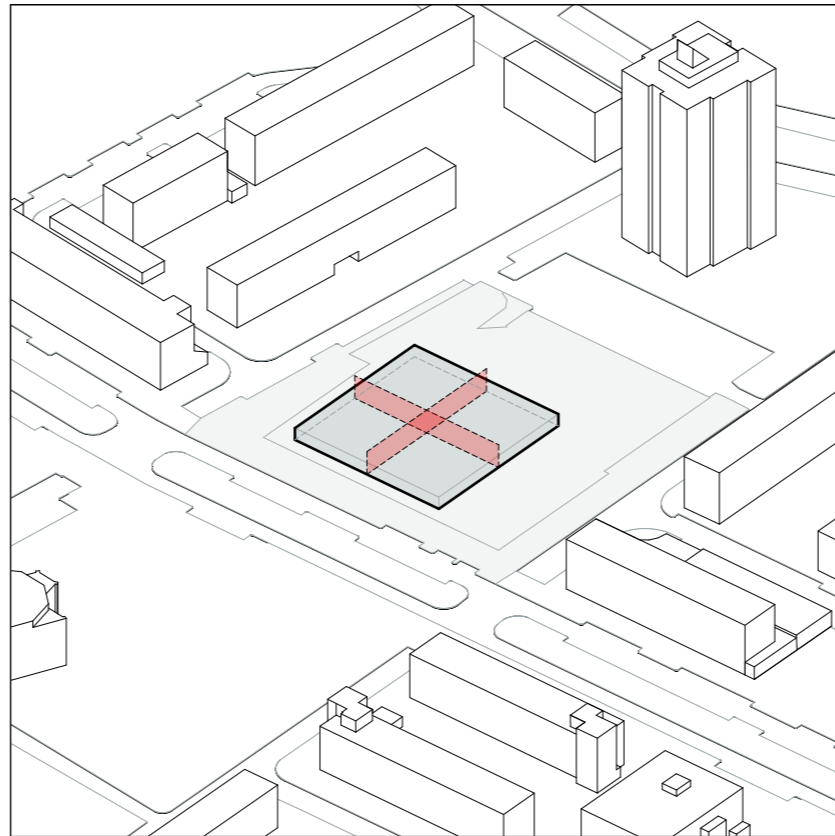
Defining green axis



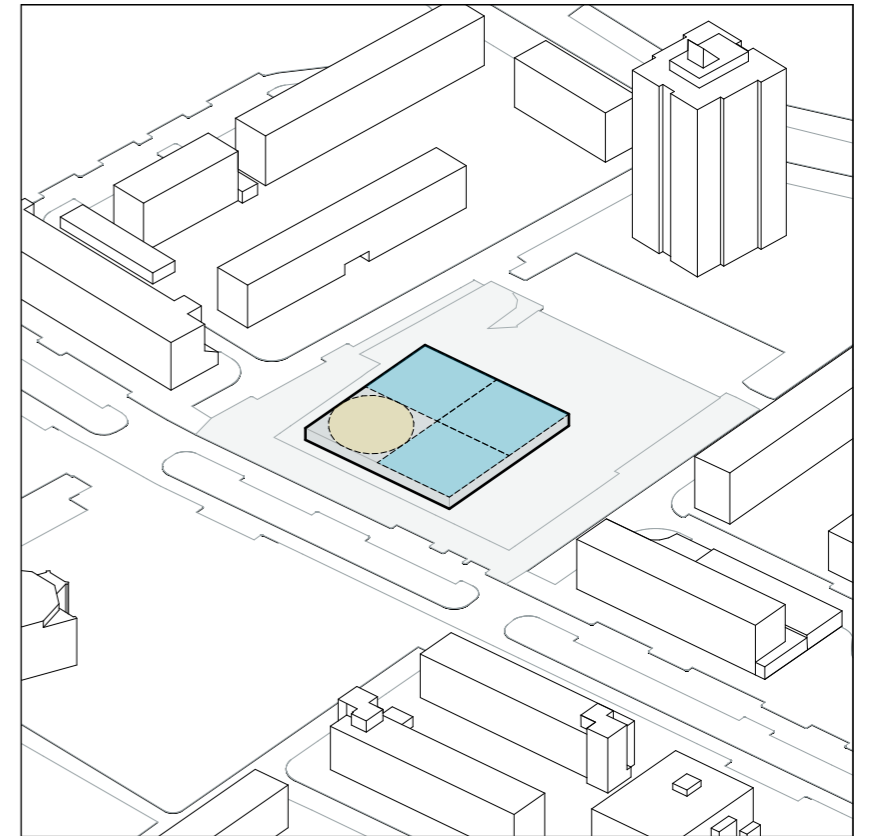
Community sports, play and Grow together



Porous facades to open up to the neighbourhood

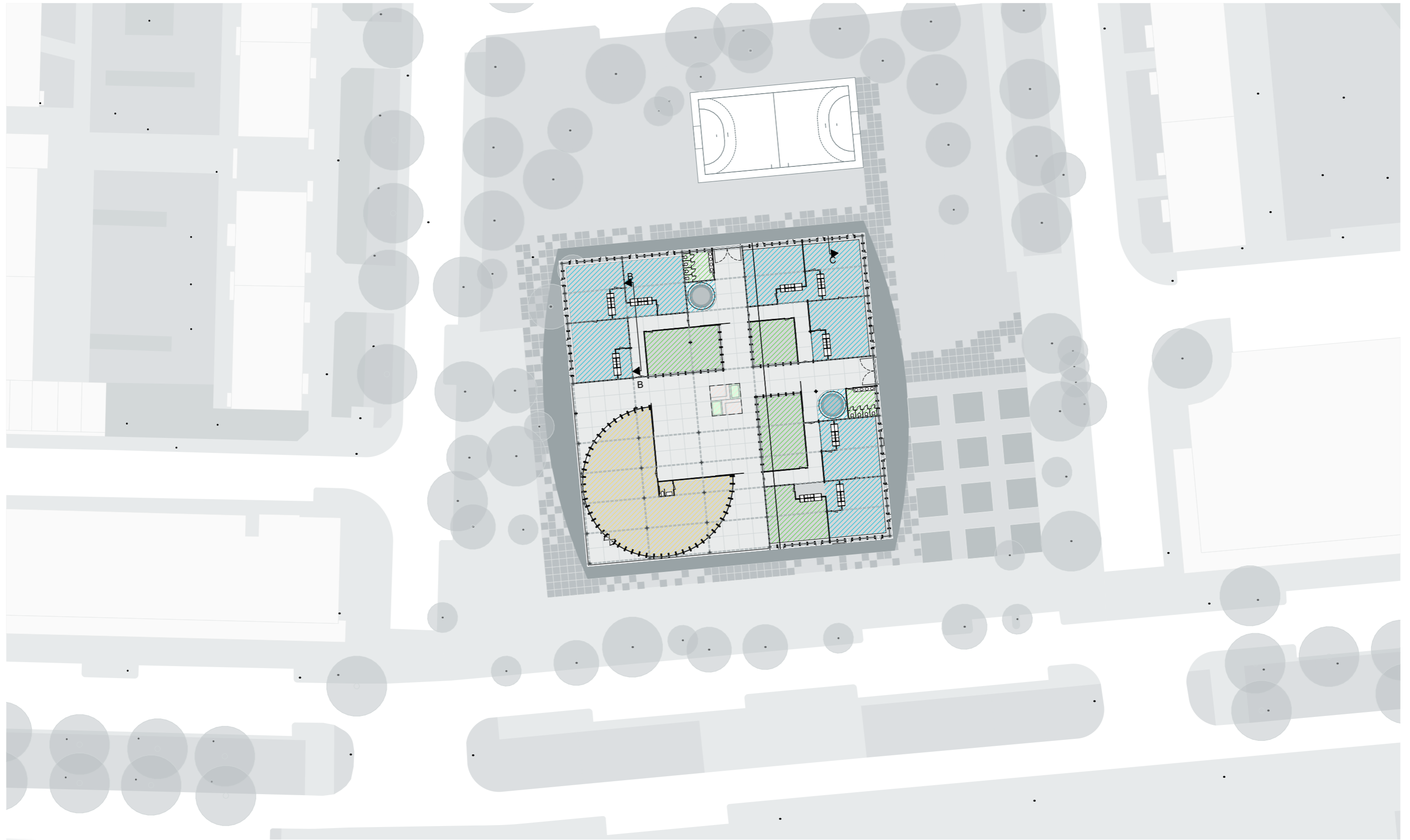


Shared spaces for the community



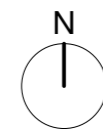
Placing of the community centre and School

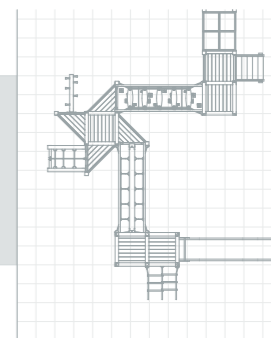
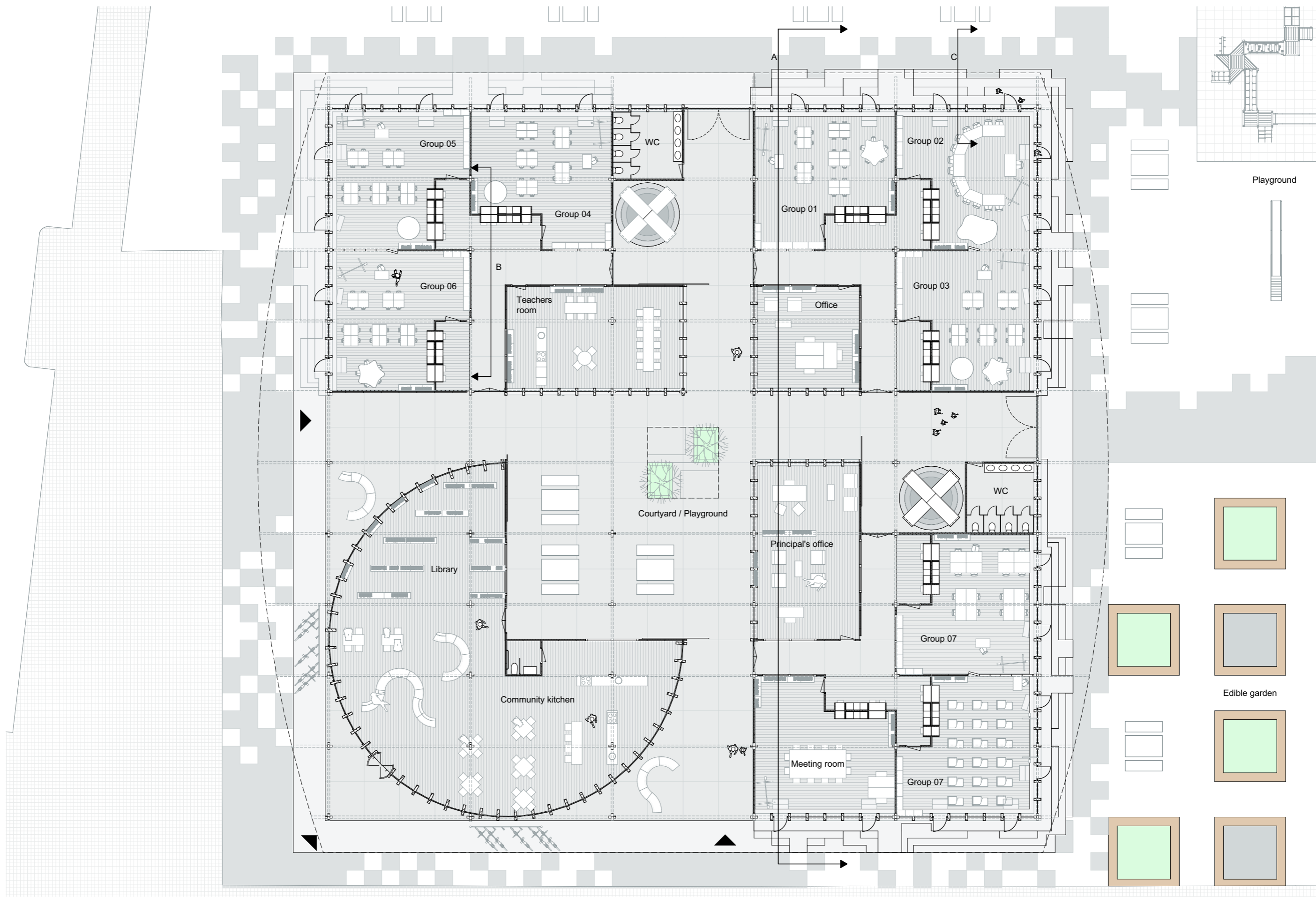
Concept diagrams



SITUATION 1 :500

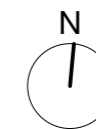
- Classrooms
- Administrative and services
- Comunity kitchen / library



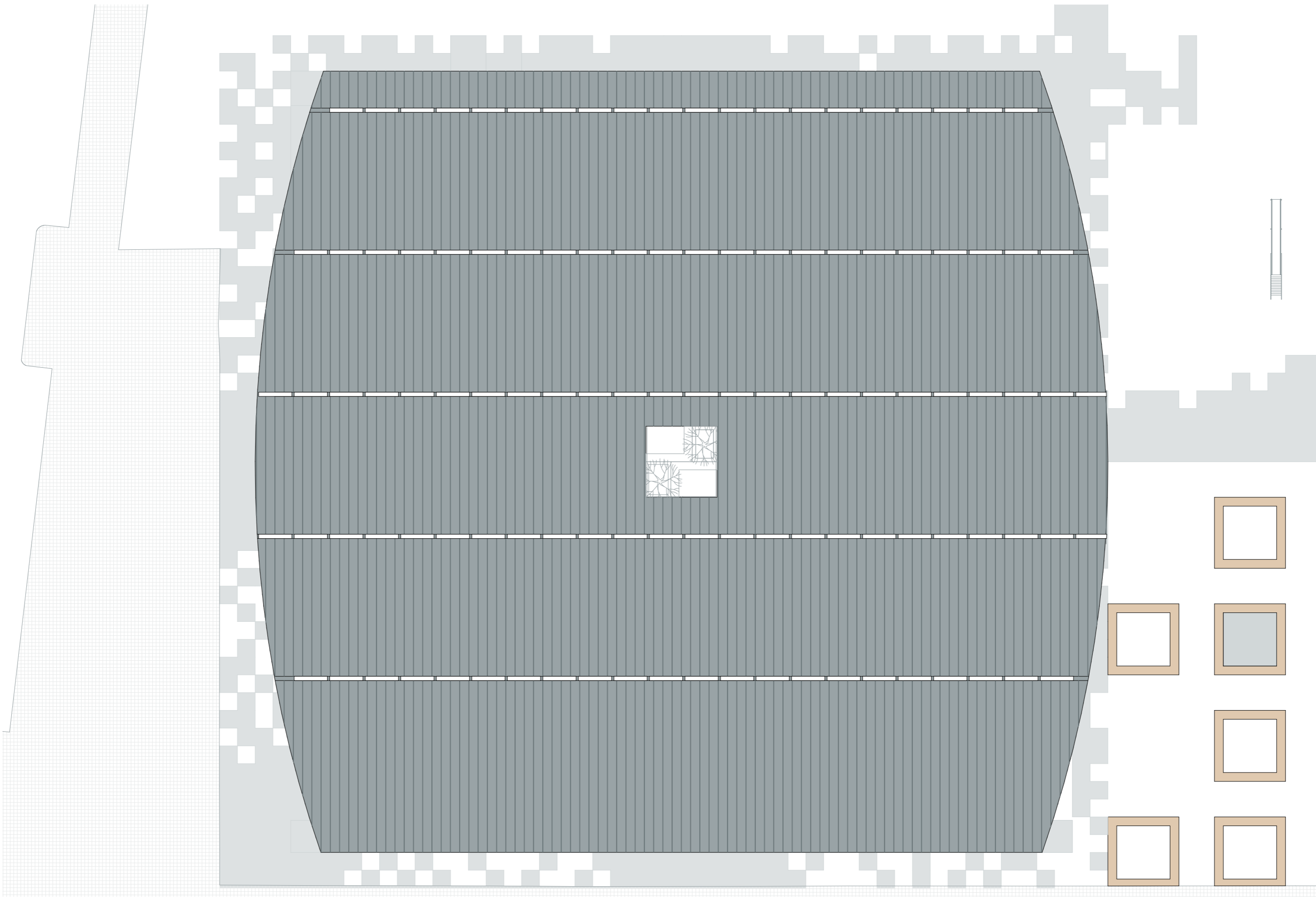


Playground

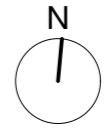
1:200 Ground Floor

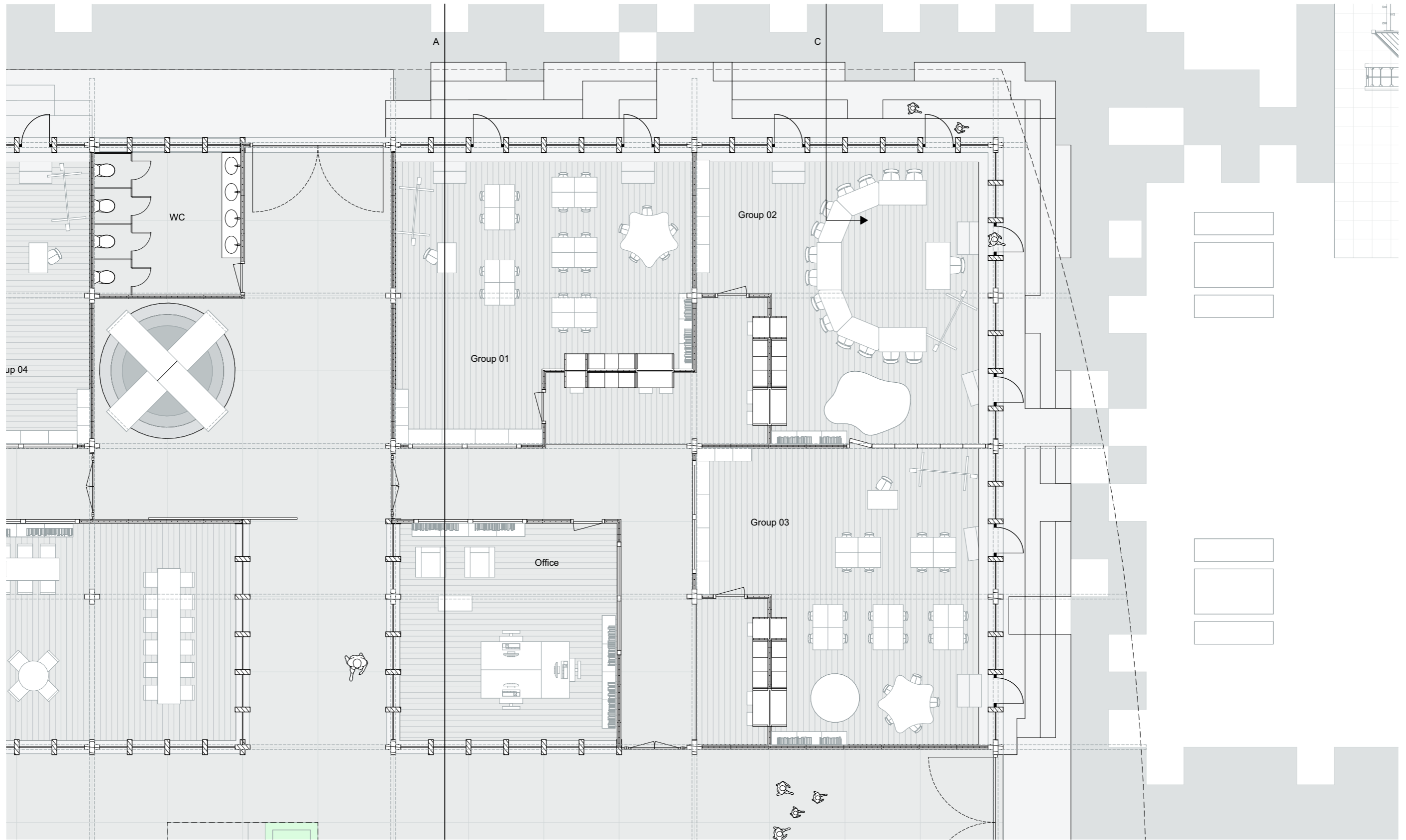


0 2.5 5 7.5 10

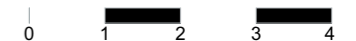
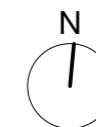


1:200 Roof





1:100 Ground Floor





School impression



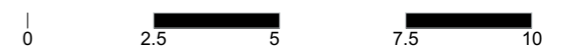
Entrance impression



Courtyard impression

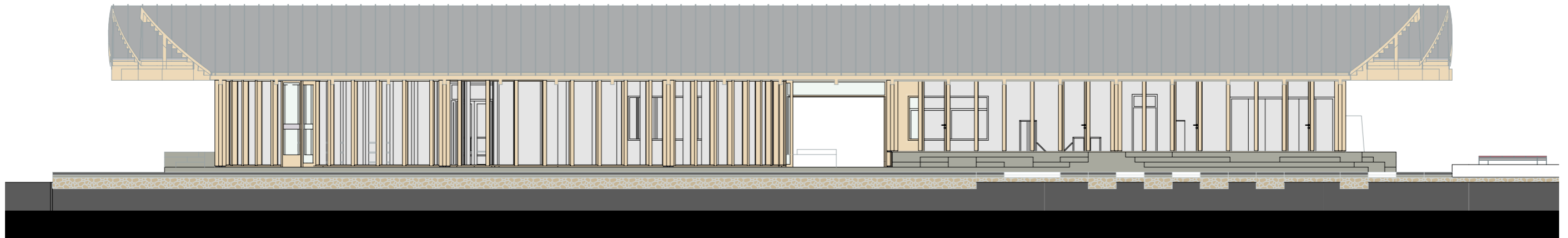


1:150 Section AA

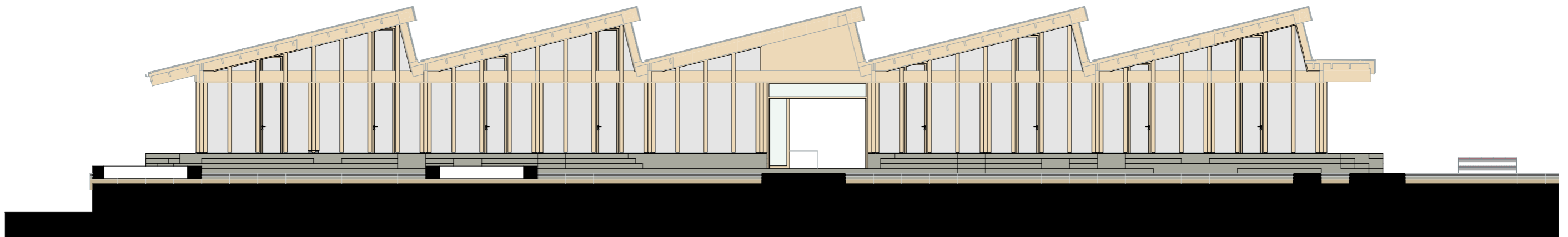




North Facade



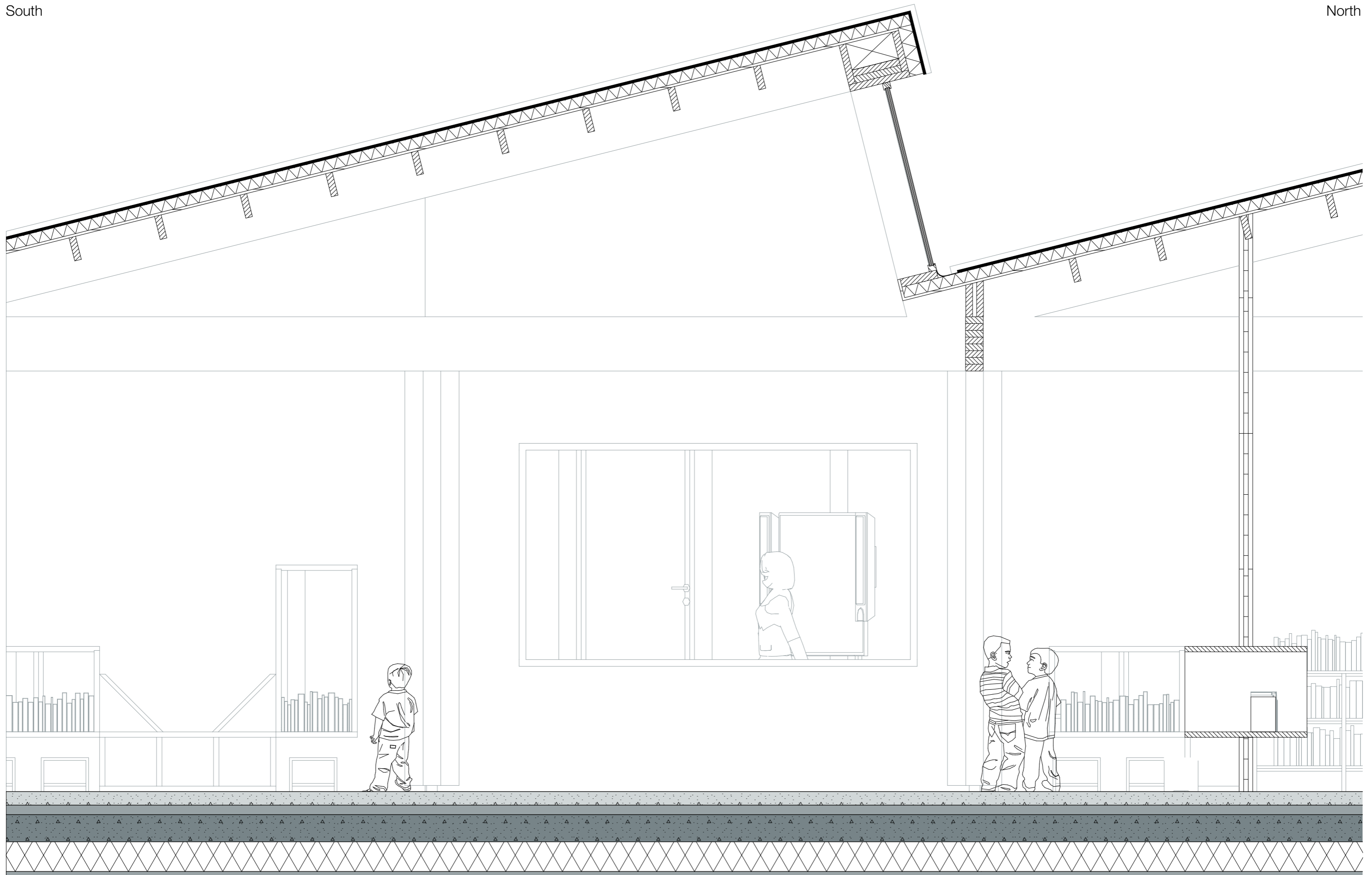
South Facade



East Facade

South

North



1:25

Roof package:

- Zinc cladding outer sheet sheet
- Vapour membrane
- Carpentry timber frame rafter system
- Carpentry timber frame truss system
- Triple-layer glass with ventilation

Roof package:

- Zinc cladding sheet
- Vapour membrane
- insulation
- Carpentry timber framing (roof truss)
- Carpentry timber framing purlin
- Carpentry Timber Framing soffit

Facade package:

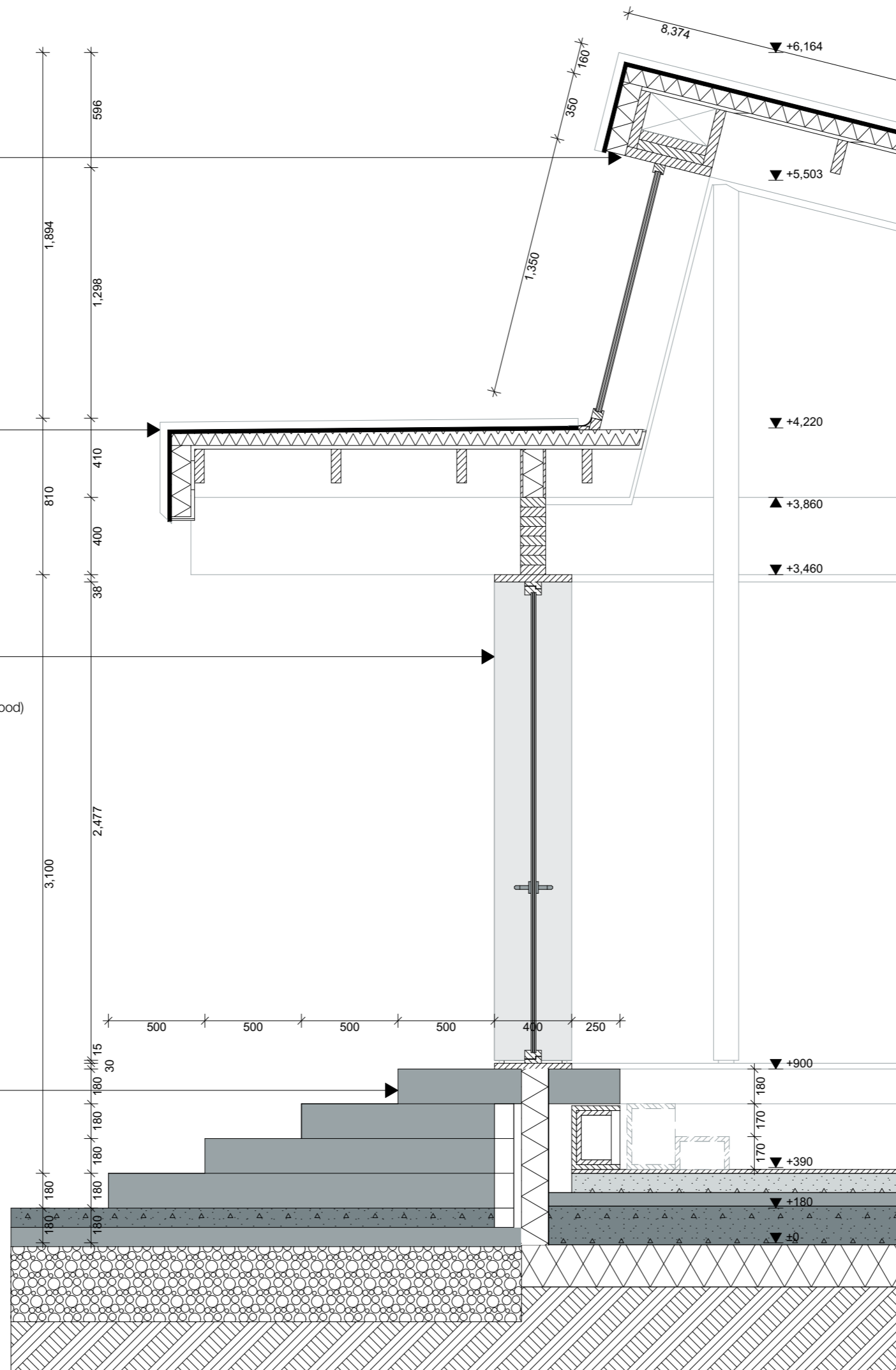
- Wall insulating sandwich panel(wood/ISO/wood)
- Glued laminated timber (structural beams)
- Carpenteria Timber Framing glasswall stud
- Timber Columns
- Three-layer glass/glass doors
- Steel base
- Isolation

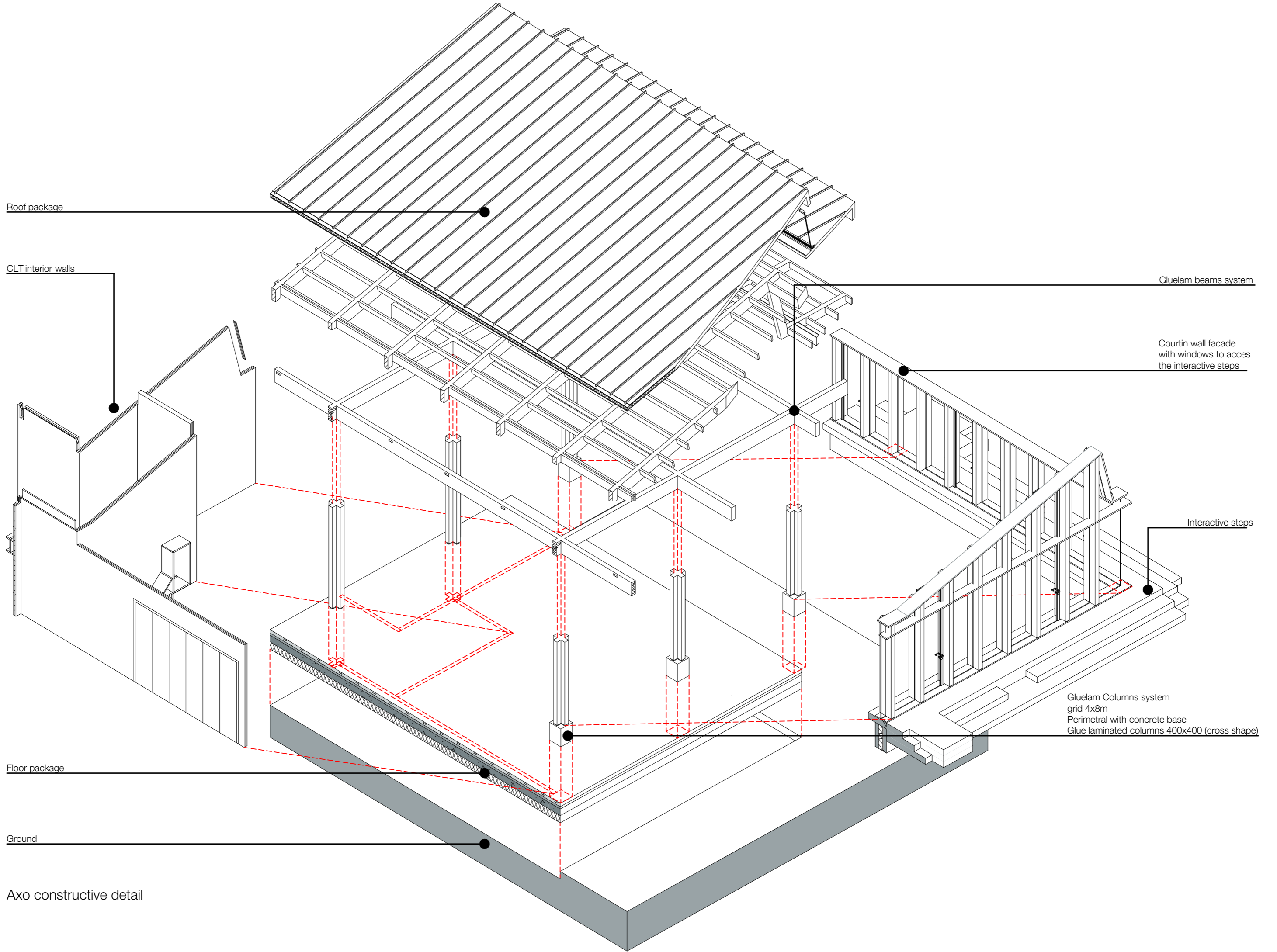
Facade steps package:

- Prefab reinforced concrete slabs

Floor package:

- Wood finishing
- Cement floor finishing (with radiant heating)
- Concrete
- Reinforced concrete
- Ground insulation
- Vapour membrane





Roof package

CLT interior walls

Gluelam beams system

Courtin wall facade with windows to acces the interactive steps

Interactive steps

Gluelam Columns system grid 4x8m Perimetral with concrete base Glue laminated columns 400x400 (cross shape)

Floor package

Ground

Axo constructive detail

Roof package
Saw tooth Roof to increce natural lighting

Gluelam Roof structure

Gluelam beams system
Glue laminated beams 130x400

Gluelam Columns system
grid 4x8m
Perimetral with concrete base
Glue laminated columns 400x400 (cross shape)

CLT interior walls

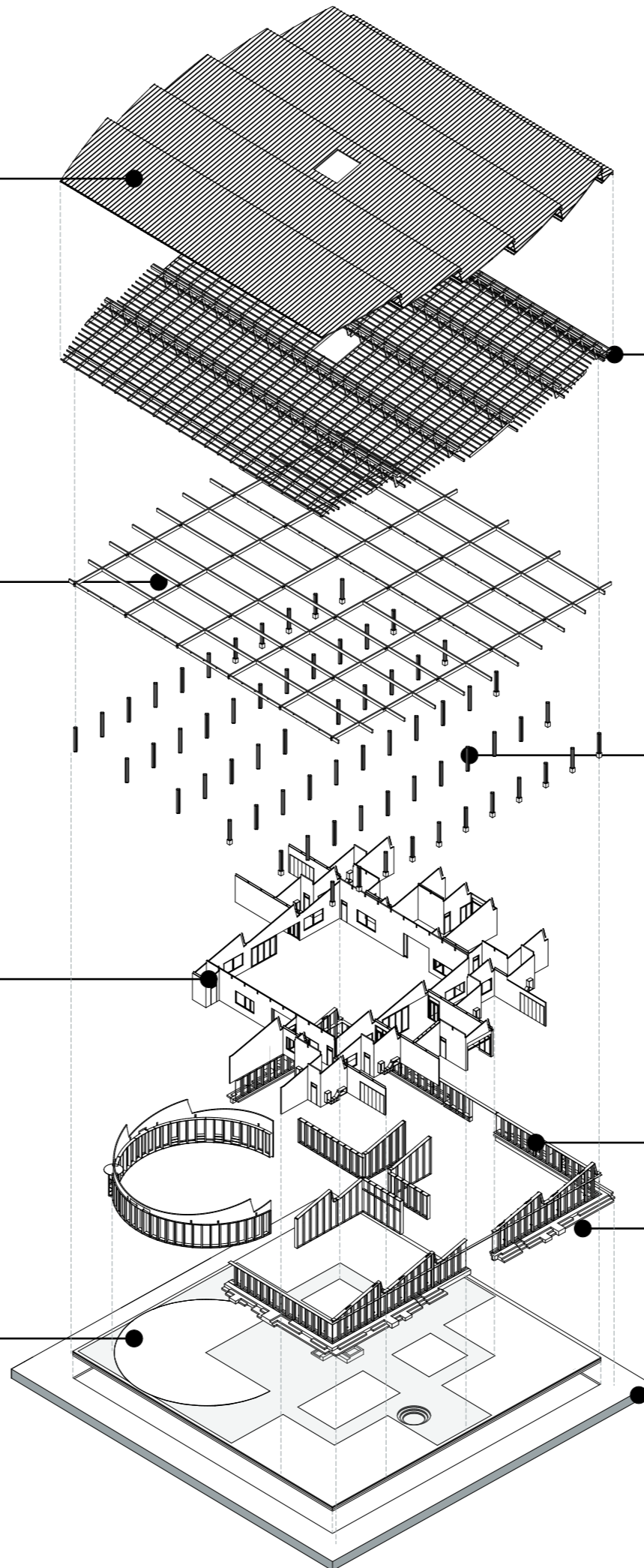
Courtin wall facade
consist in glass and timber columns
with windows to acces
the interactive steps

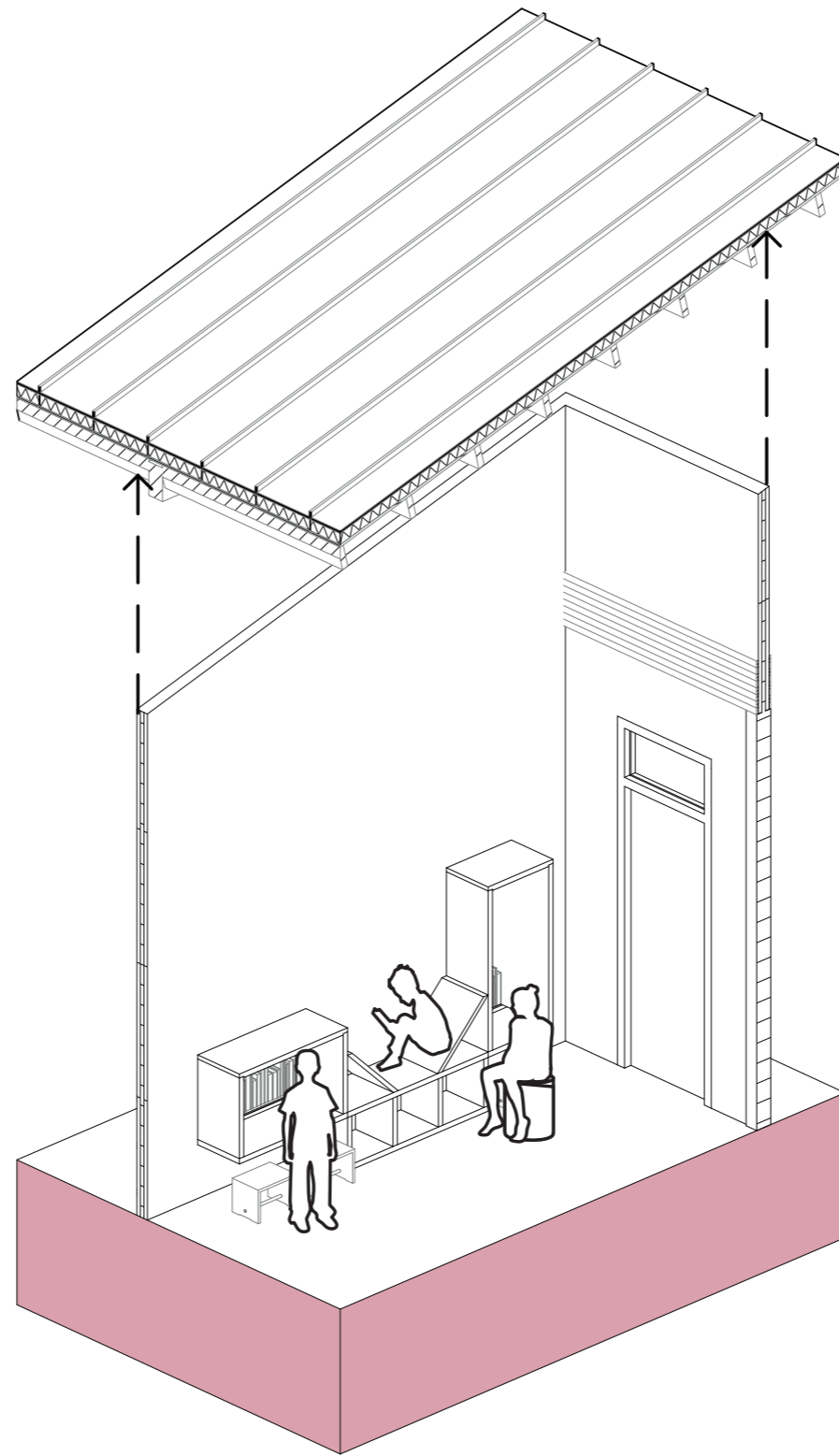
Interactive steps

Floor package

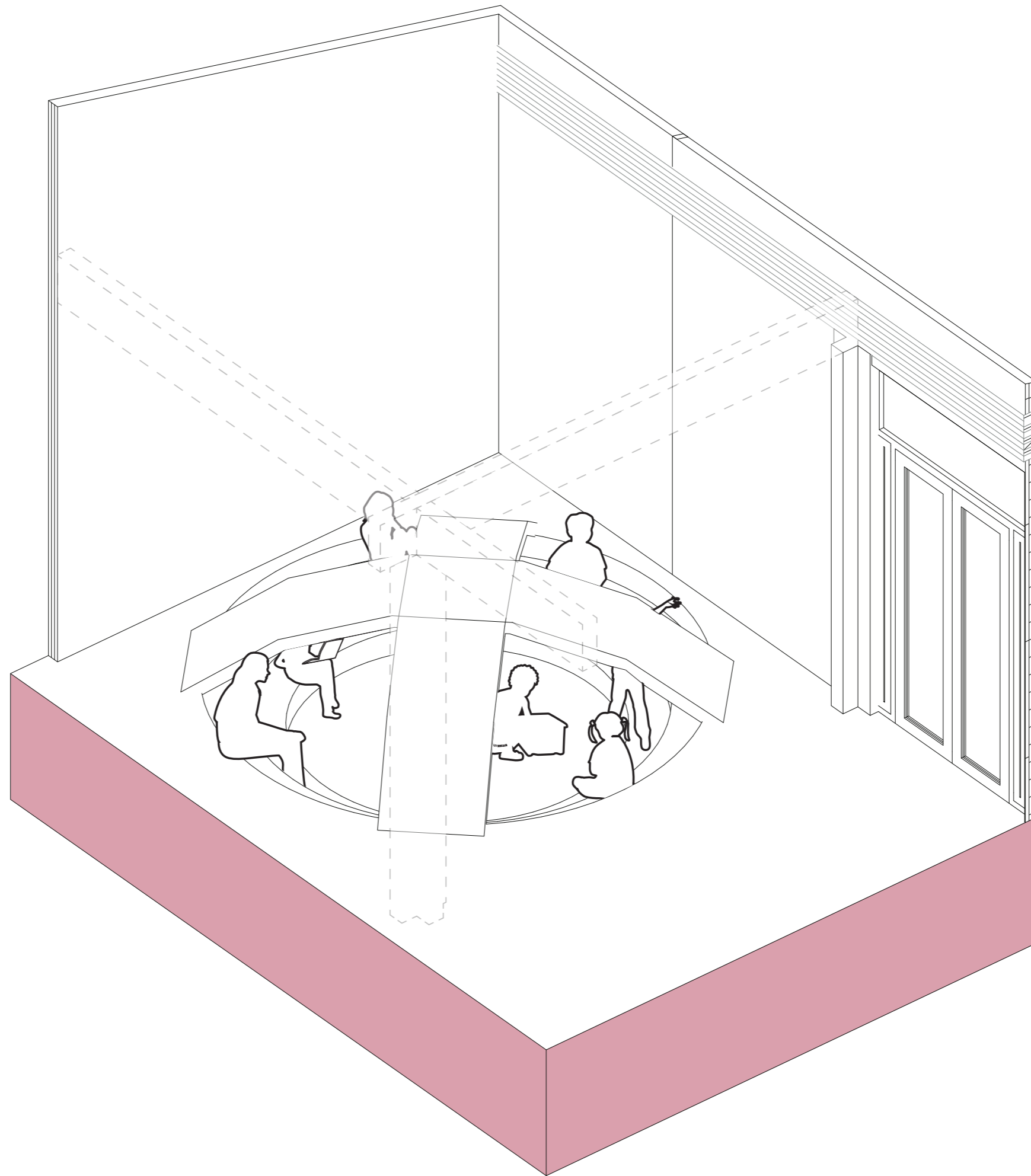
Ground

Axo constructive detail

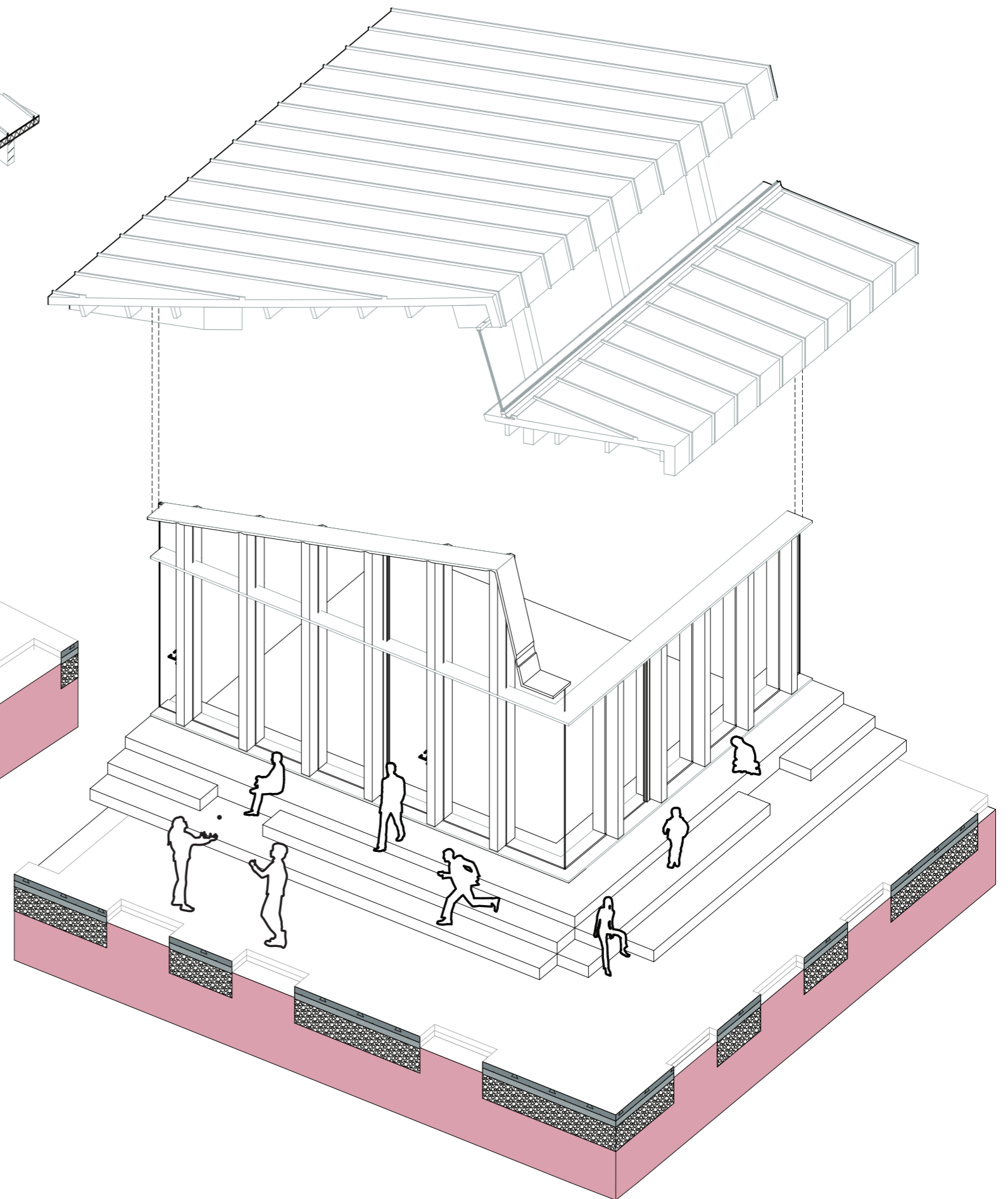
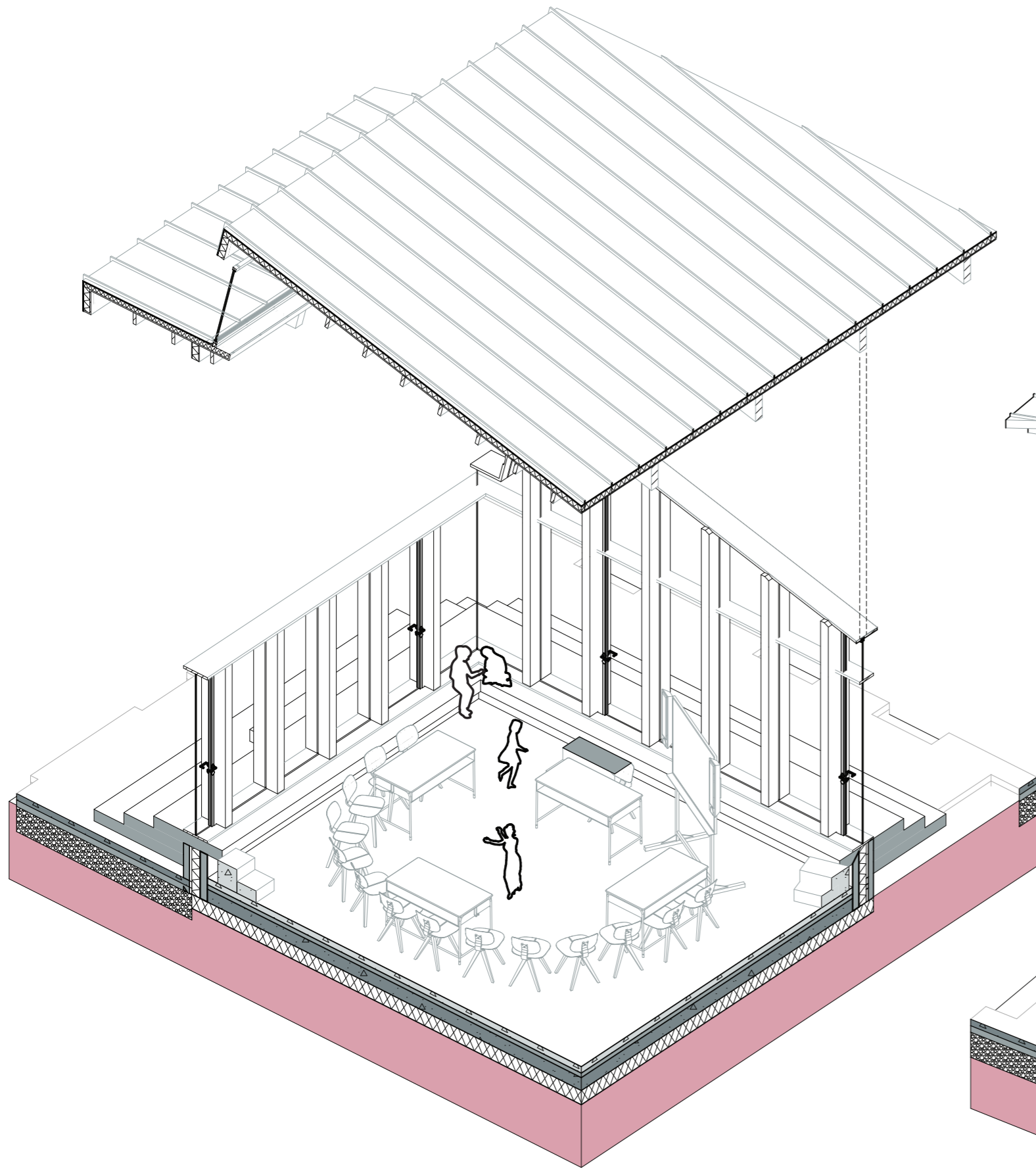




Learning moments: focus stations



Learning moments: learning pod



Learning moments: classroom/ interactive steps