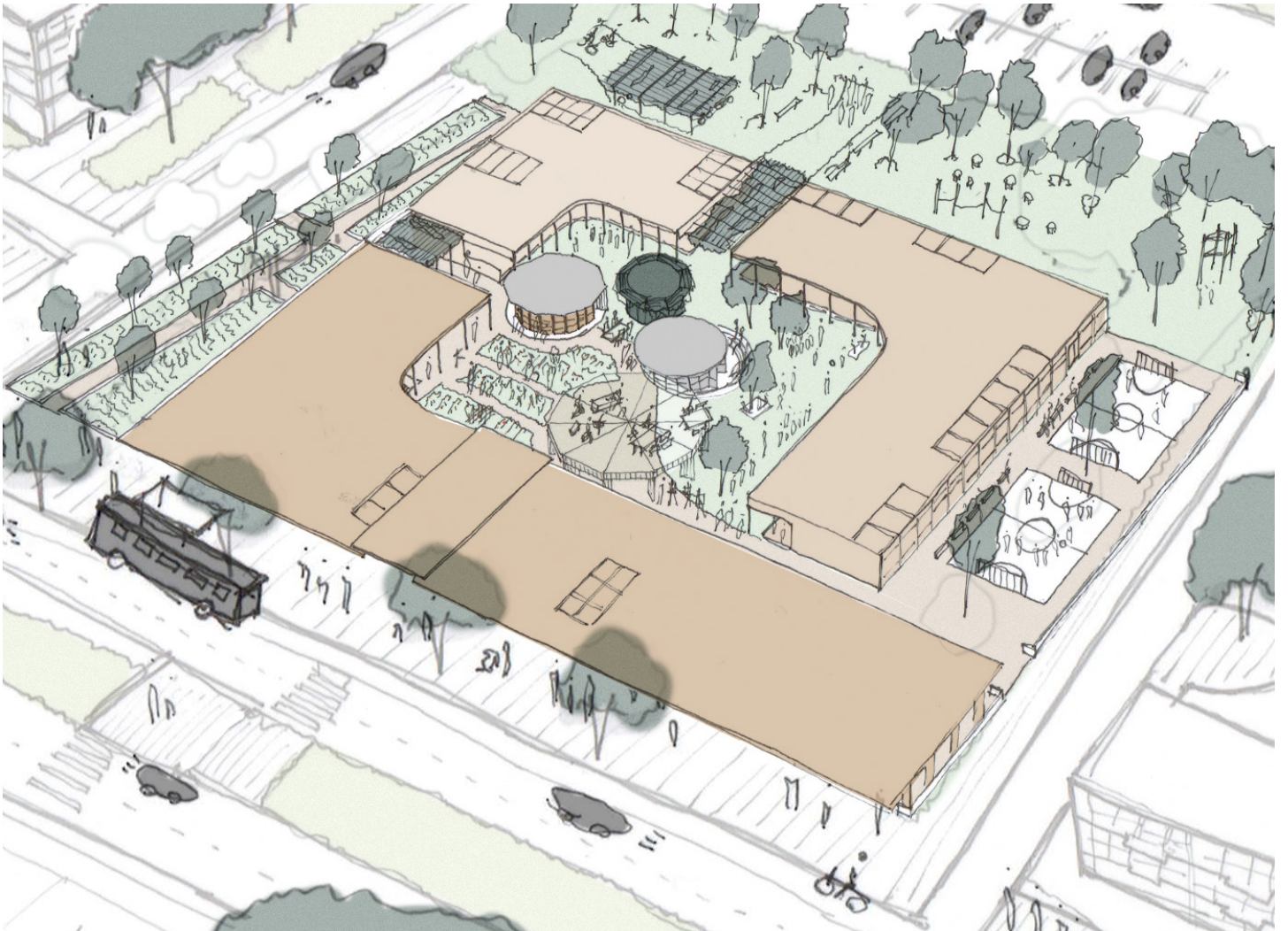


School for the aged and youthful



Studio: School for a Timber Age
Robin-Jay King

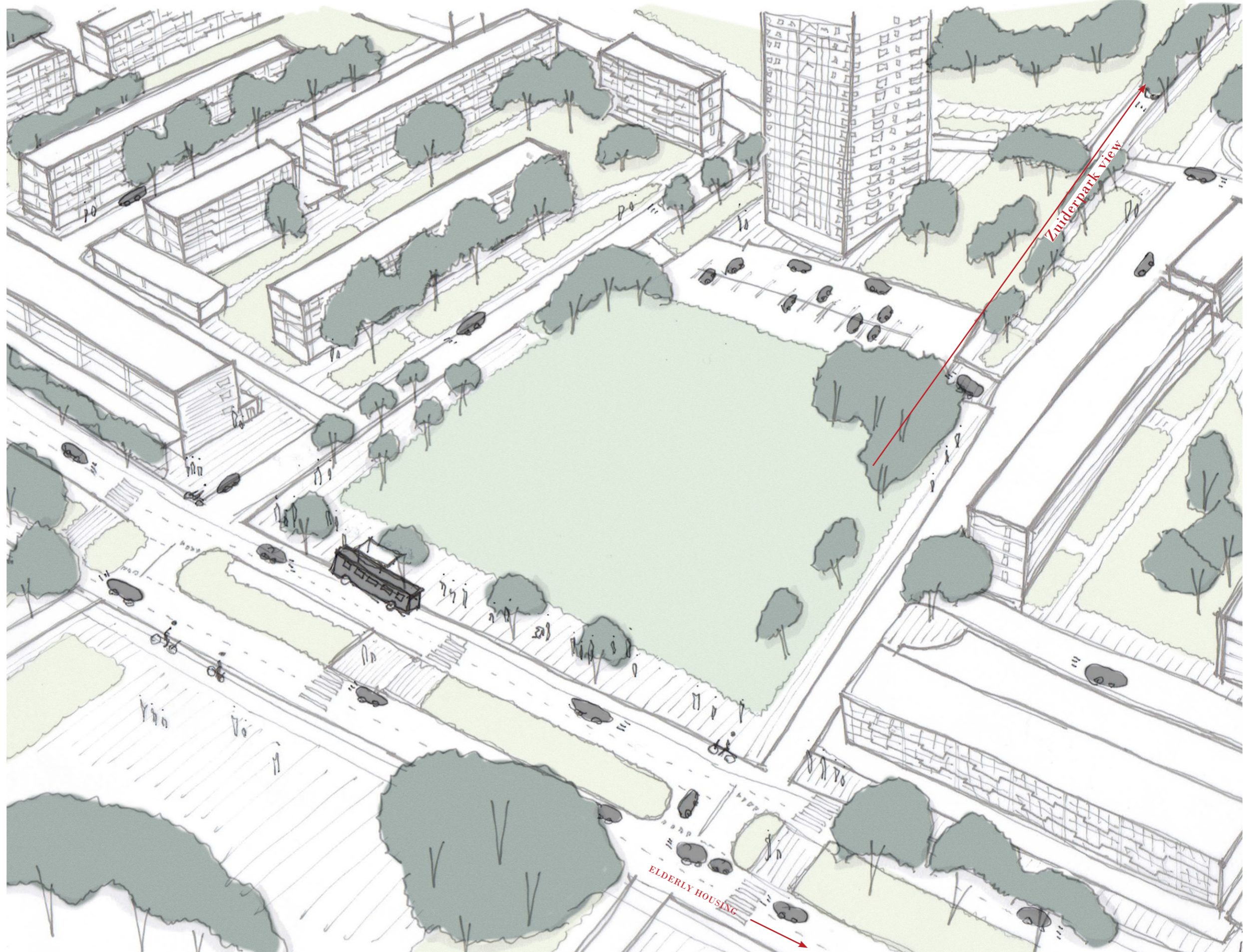
School for the aged and youthful

Location, Slinge 303

Zuidwijk is defined by 60's apartment blocks, forming private underused courtyards. The goal is to create a controlled social outdoor place with a primary school program and elderly institution.

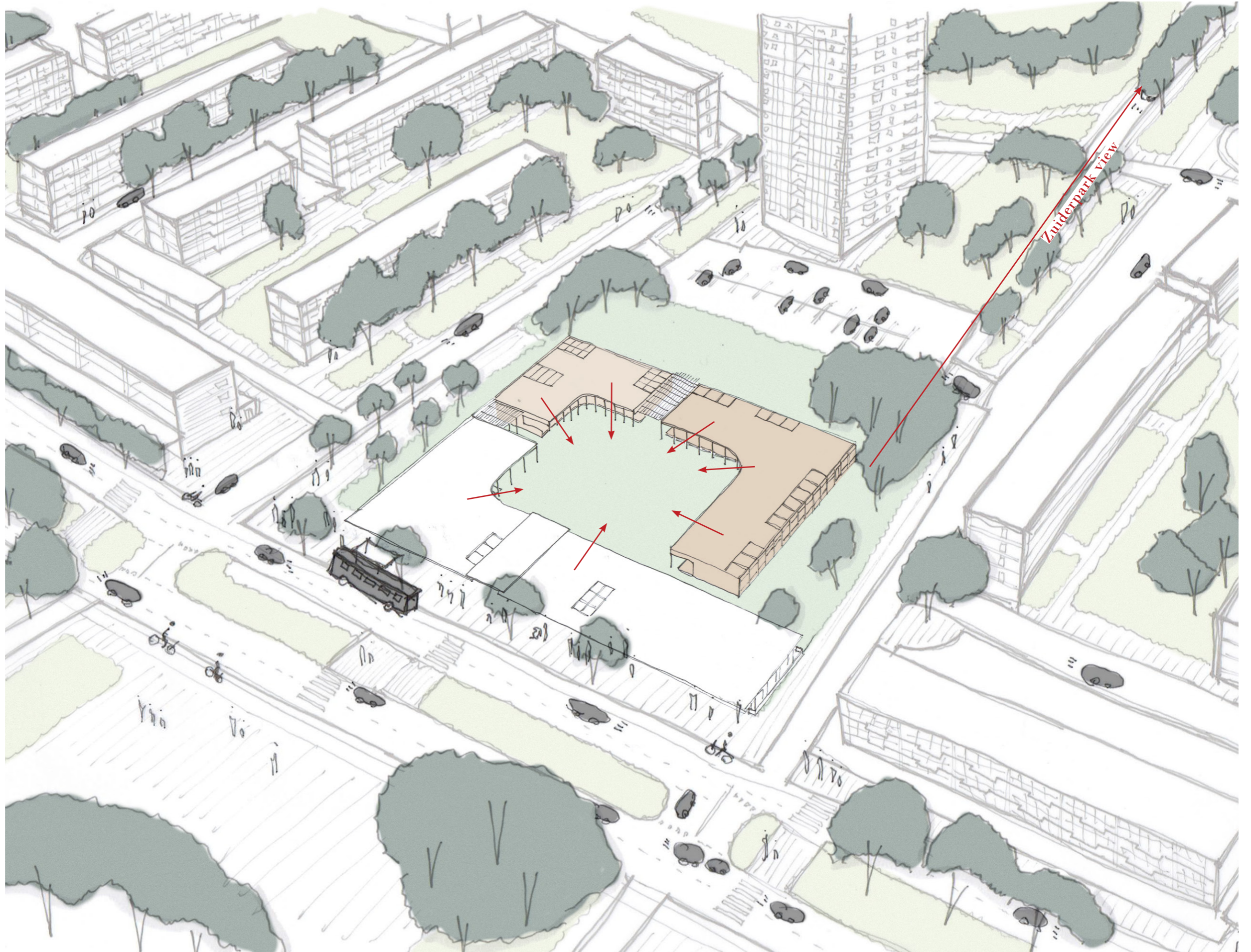


60's apartment block



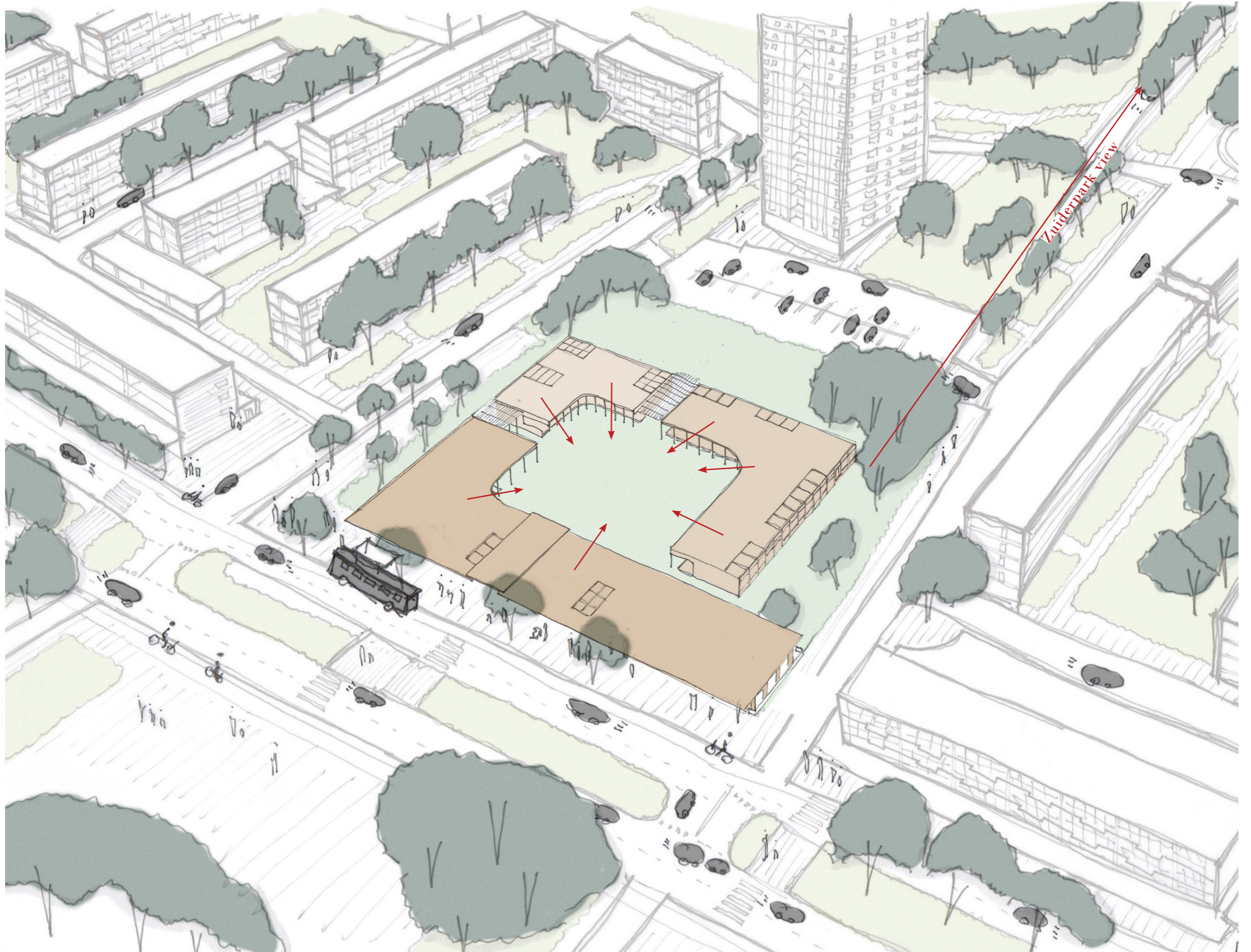
School for the aged and youthful

Perimeter kids
Setup for a perimeter to create a controlled environment. The children sheltered in the back, leaving space for an entrance park on the north side.



School for the aged and youthful

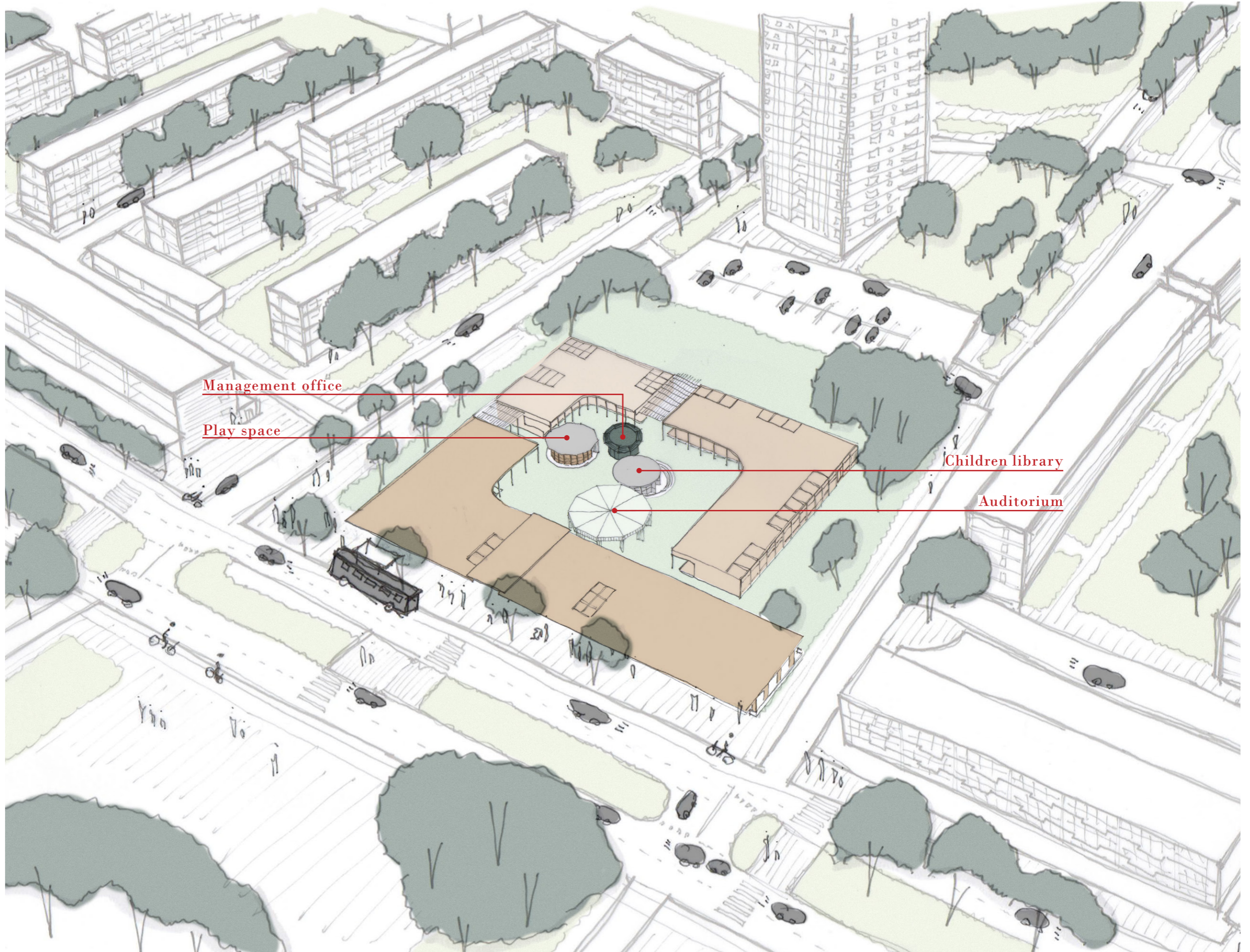
Perimeter elderly
The building for the elderly on the accessible side of the plot, functioning as a buffer in between the main road and the courtyard.



School for the aged and youthful

Studio: School for a Timber Age

Pavilions
The “special” functions as entities in the garden, creating special moments, in the courtyard. The entities are round to stimulate view and interaction to all sides.



School for the aged and youthful

Studio: School for a Timber Age

Gardens

Pavilions create different conditions for multiple gardens, putting the emphasis on different activities. The fruit and vegetable garden is used as the main connector between the elderly and children, giving them shared responsibility over it.



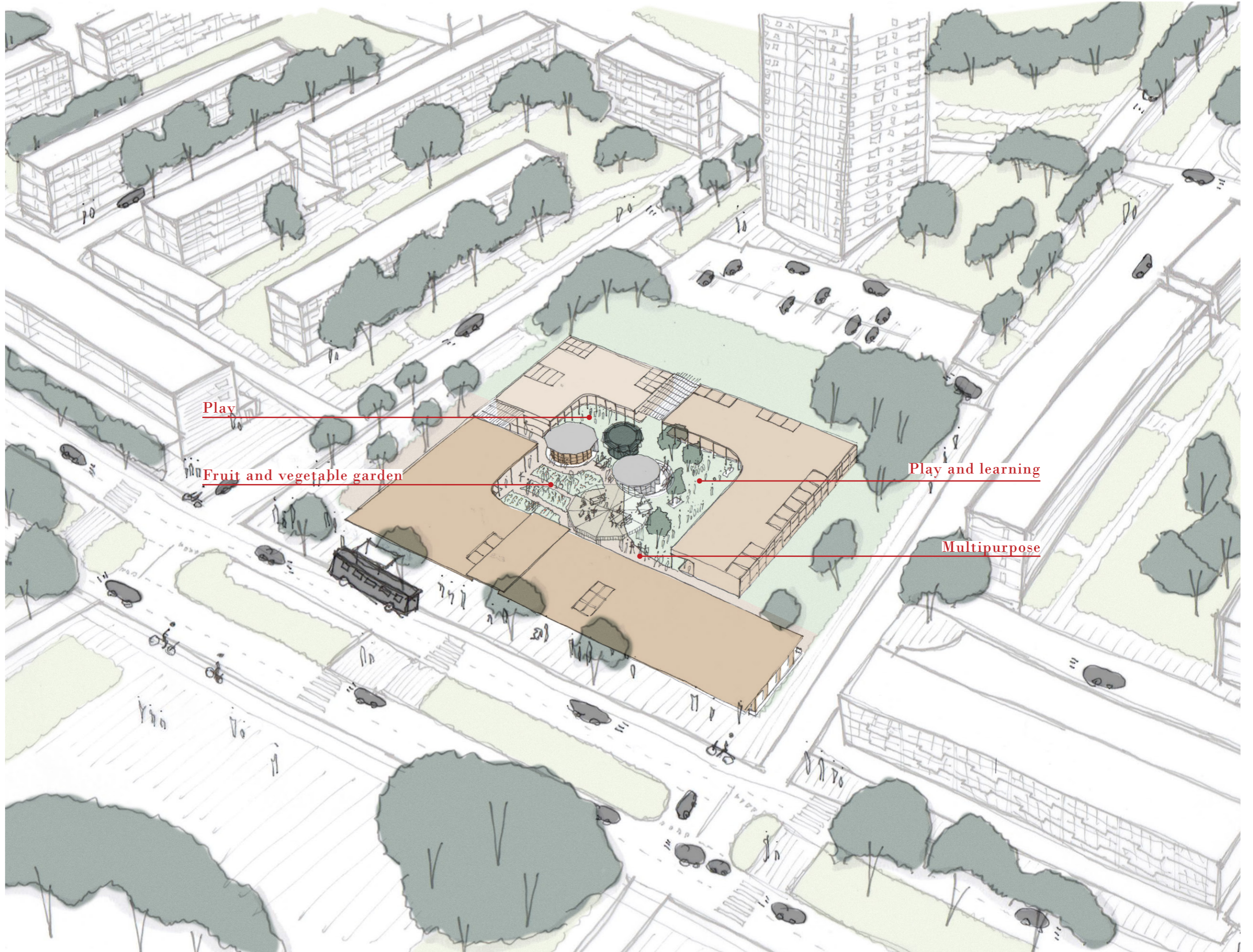
Growing



Preparing/eating



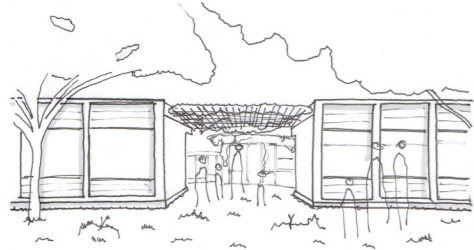
Harvesting



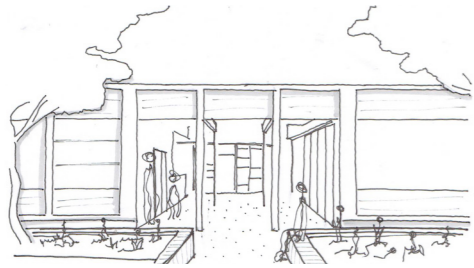
School for the aged and youthful

Entrances

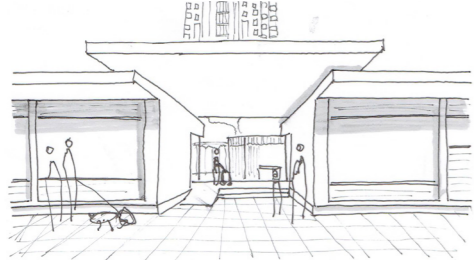
Entrances match with what you find inside. For example the school entrance is a place where the parents wait for the kids and the bikes are stored. The first thing you encounter through the entrance is the management office of the school, and the bulk of the school program.



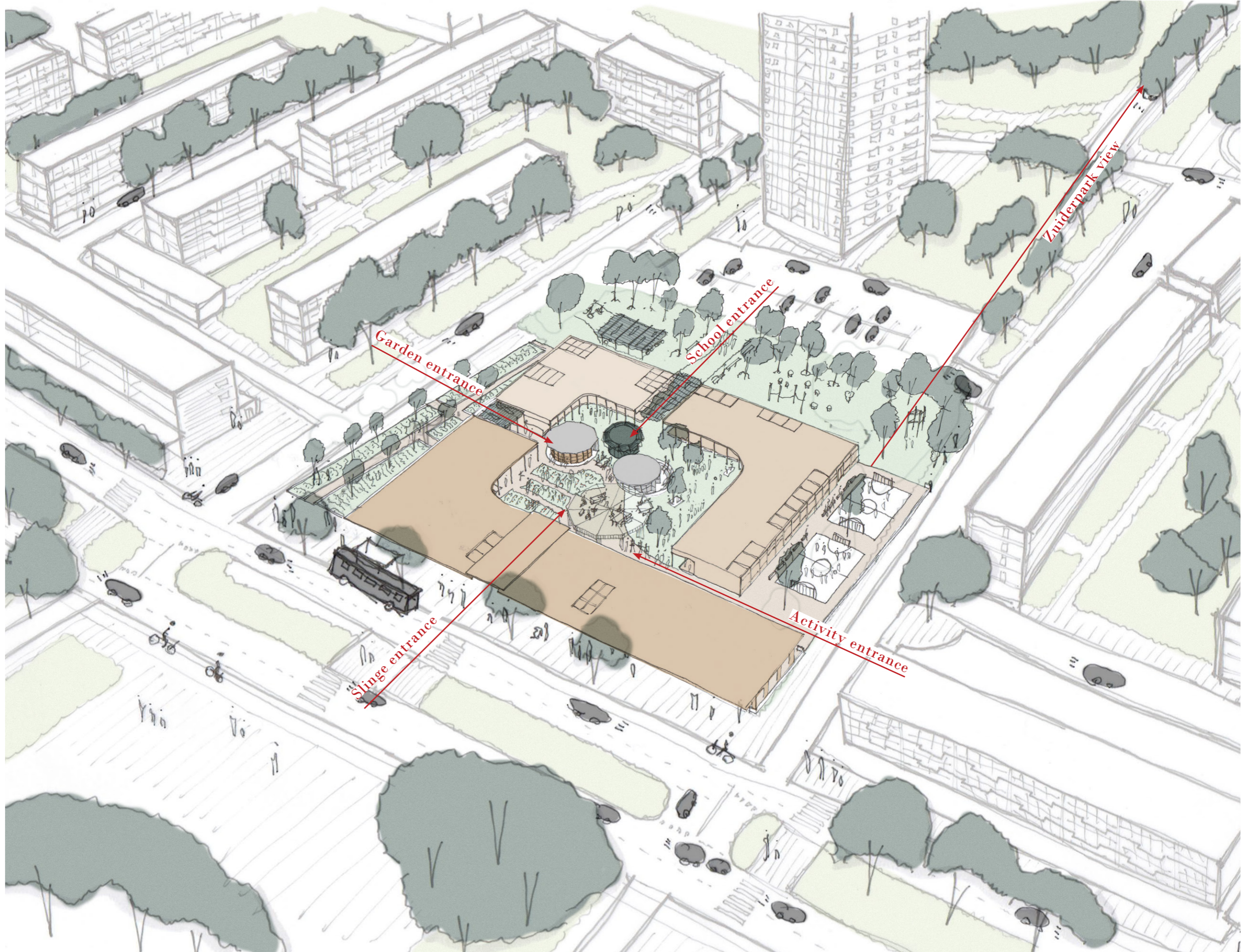
School entrance



Garden entrance



Slinge entrance



School for the aged and youthful

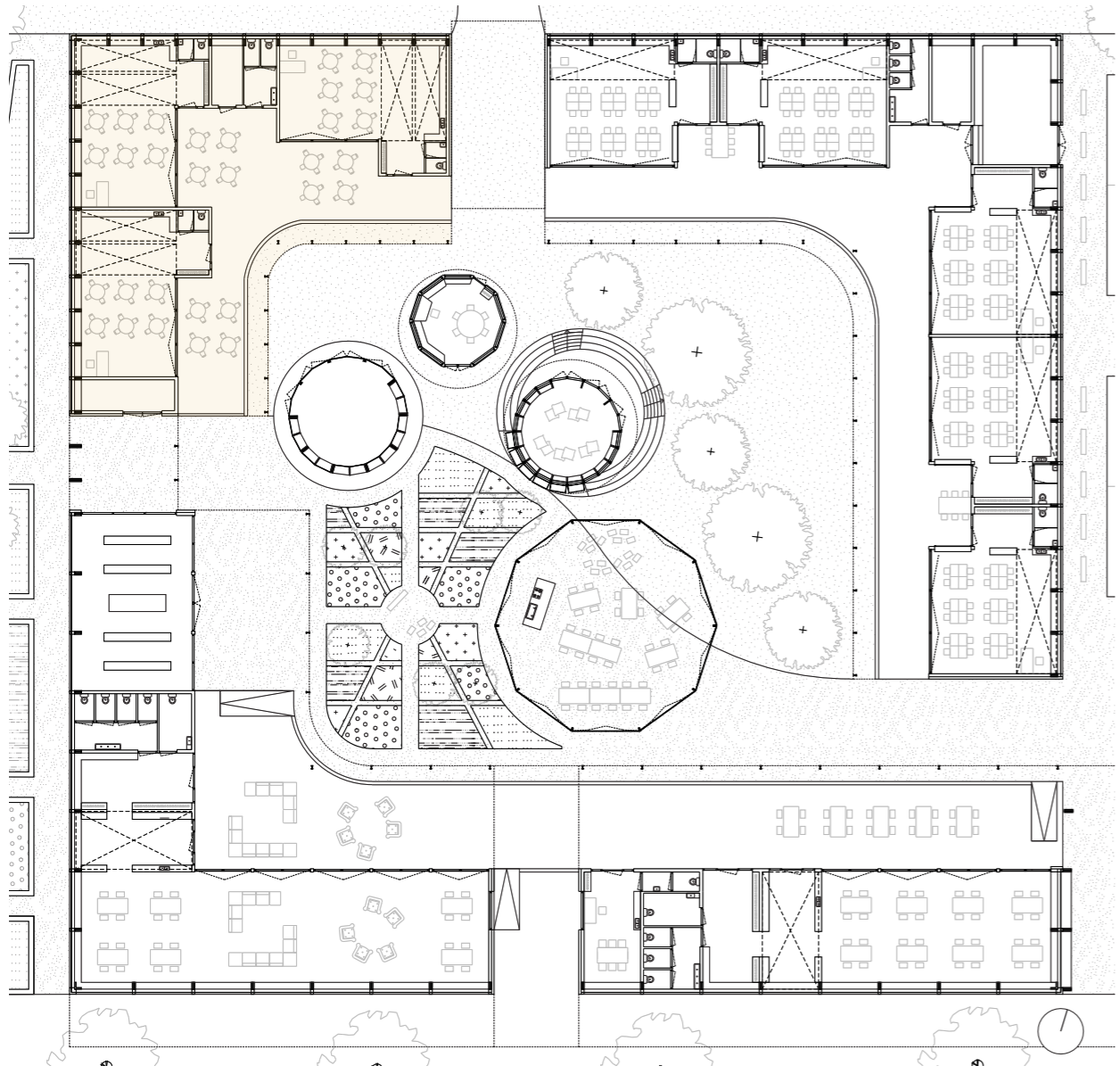
Studio: School for a Timber Age



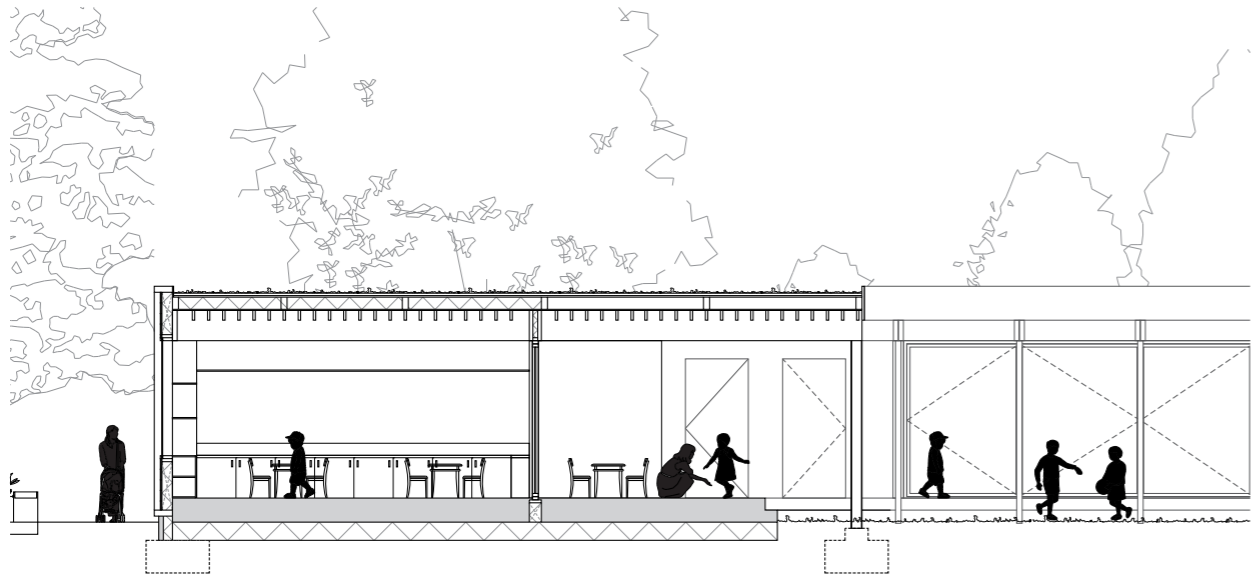
School for the aged and youthful

Studio: School for a Timber Age

FLOOR PLAN

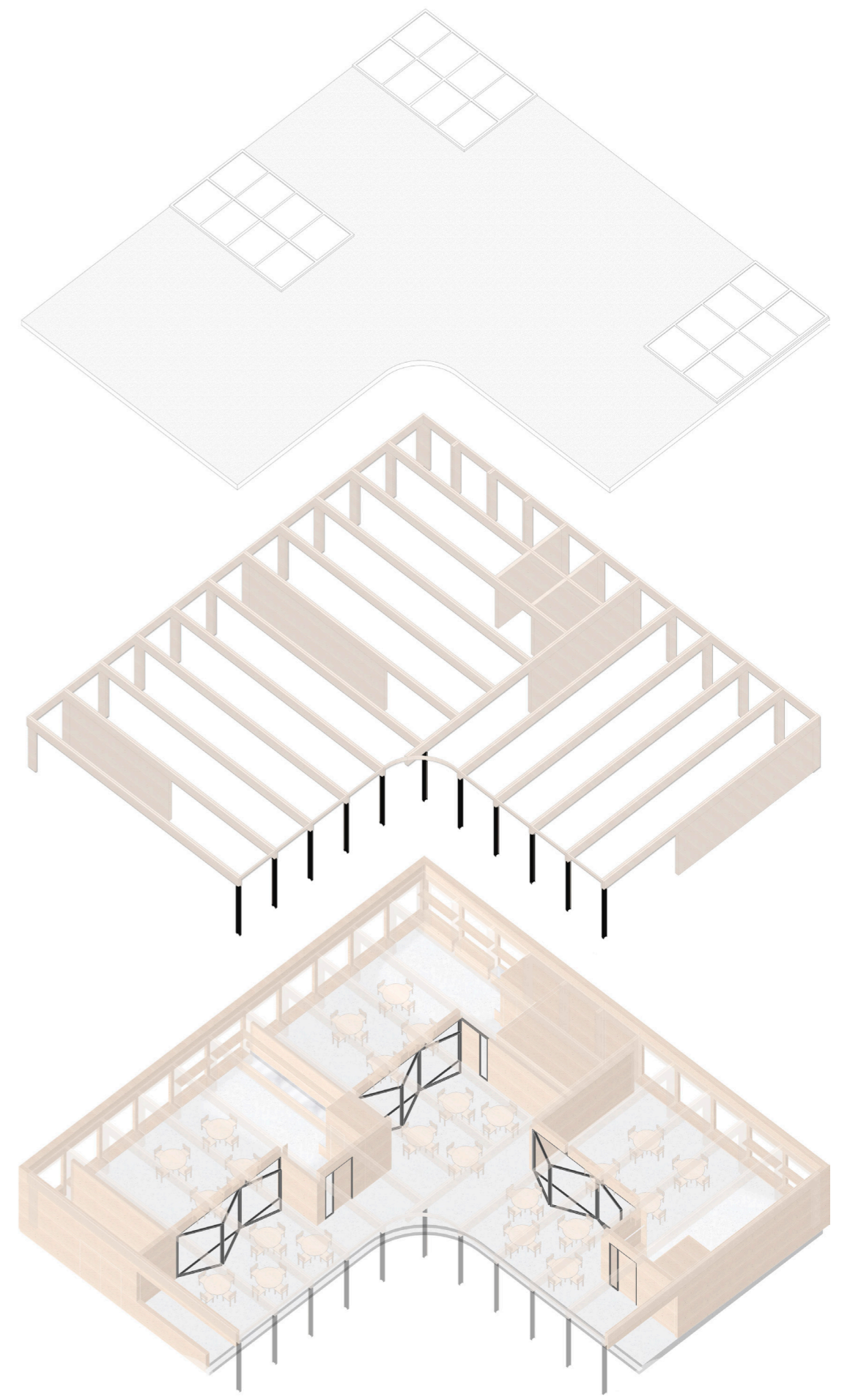


ROBIN-JAY KING



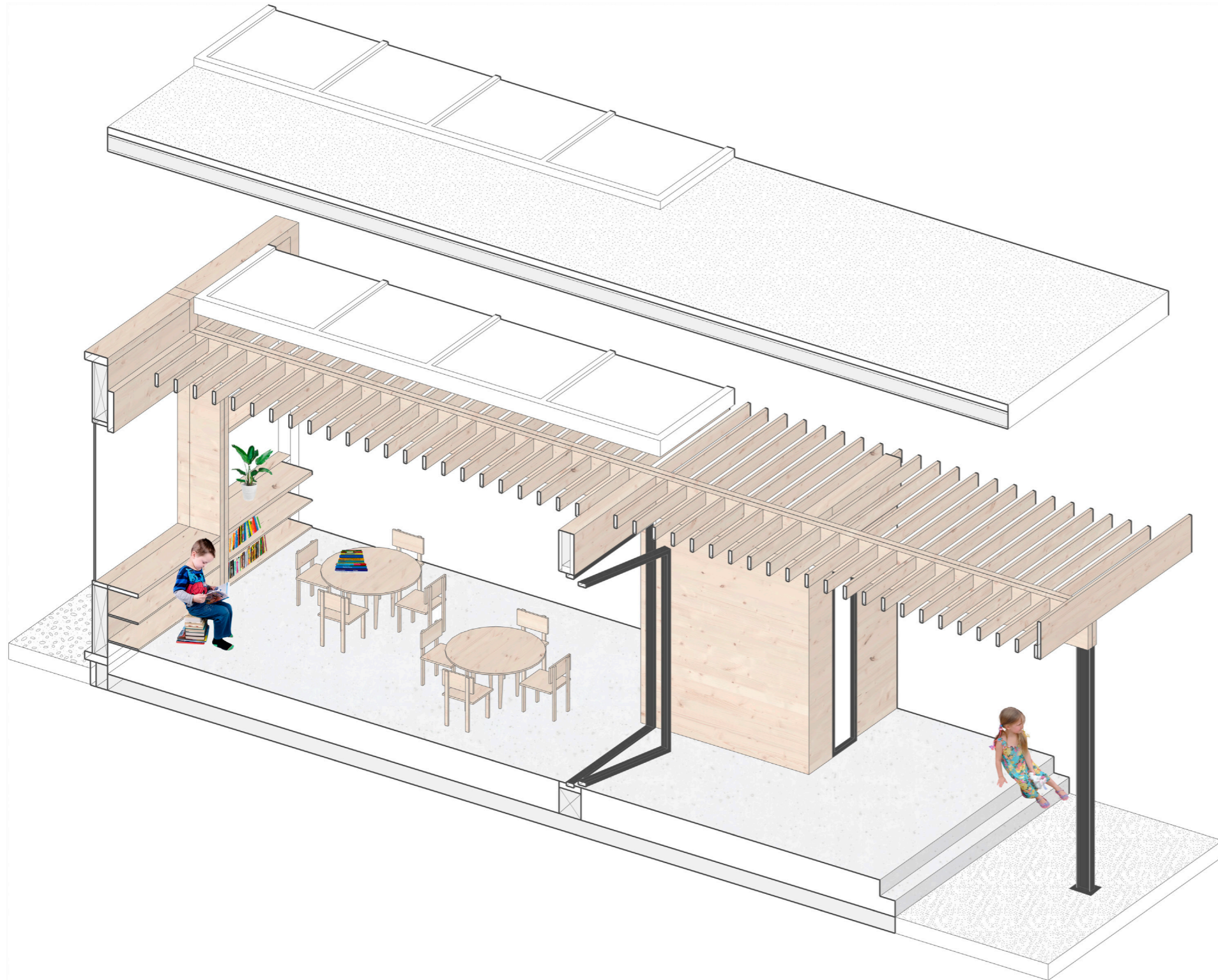
SECTION CLASSROOM YOUNG CHILDREN

AXONOMETRIC PERIMETER BUILDING YOUNG CHILDREN



PERIMETER BUILDING

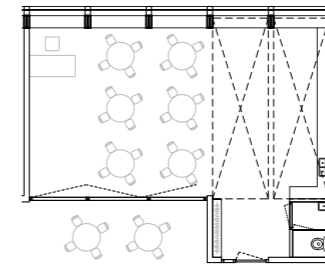
PRIMARY SCHOOL & ELDERLY INSTITUTION



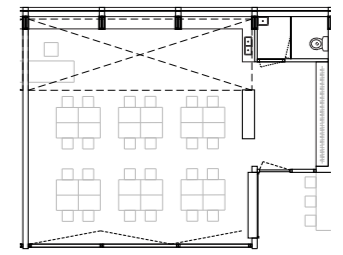
AXONOMETRIC CLASSROOM YOUNG CHILDREN



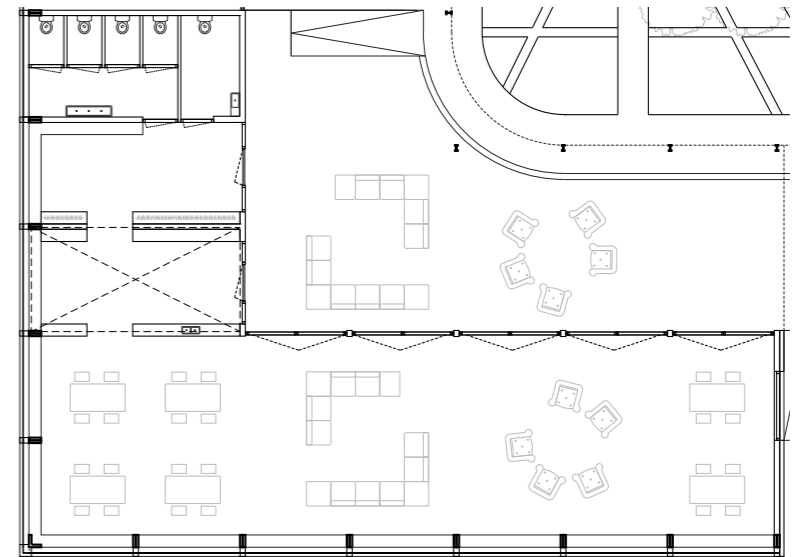
ENTRANCE CLASSROOM YOUNG CHILDREN



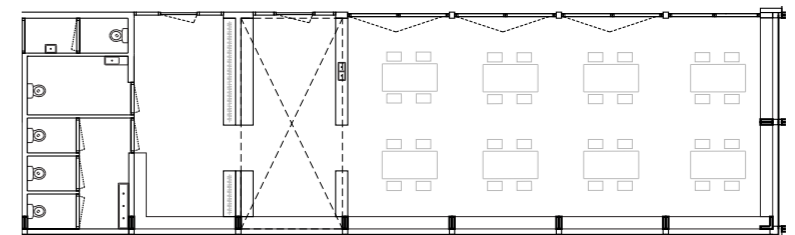
CLASSROOM YOUNG CHILDREN



CLASSROOM OLDER CHILDREN

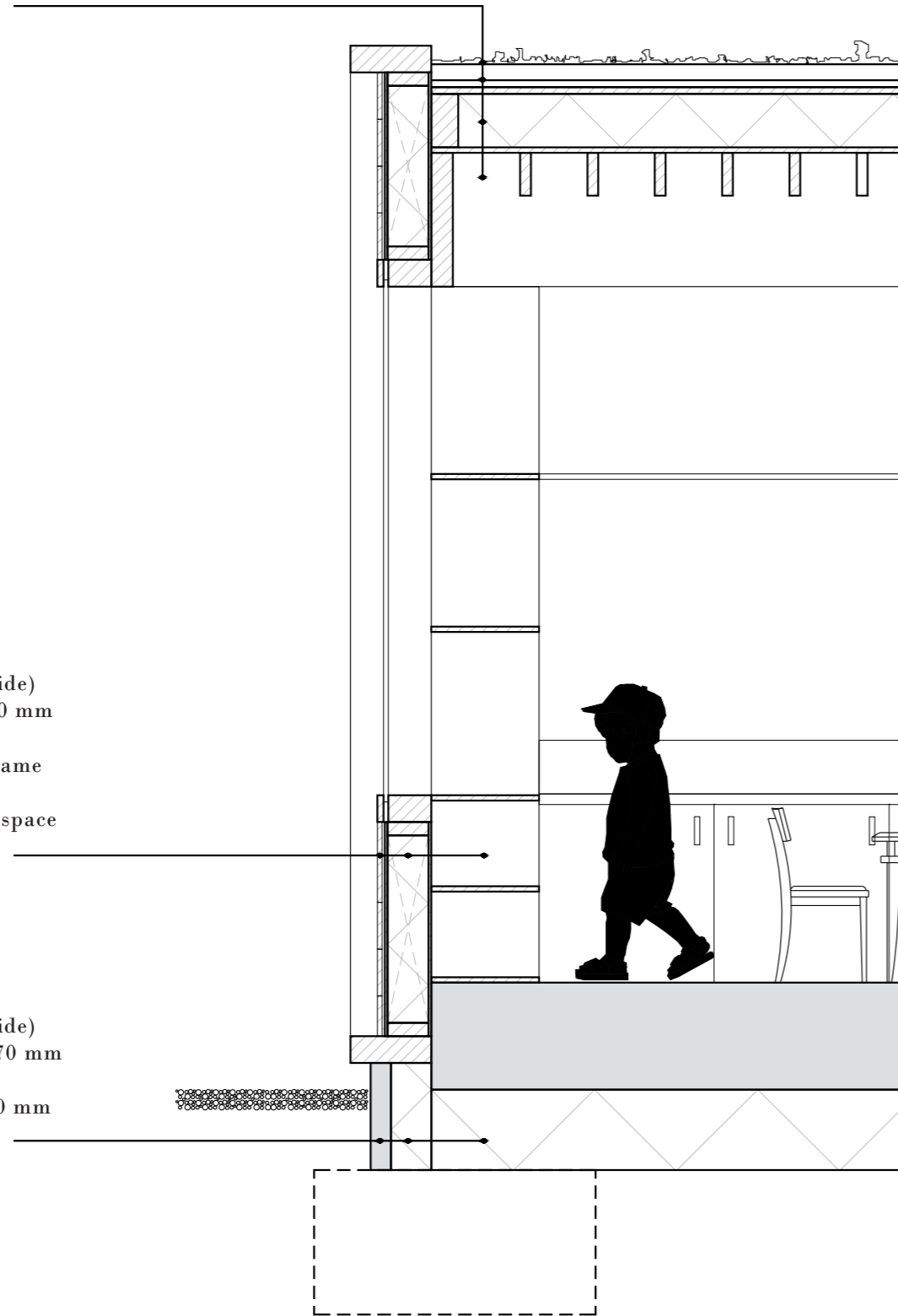


ELDERLY LIVING ROOM



WORKSHOP SPACE

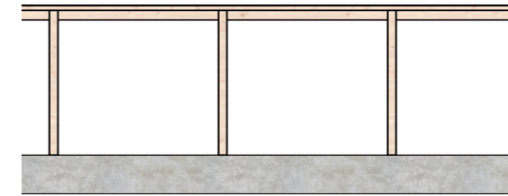
- Roof (outside- inside)
- vegetation 20 mm
 - growth medium 40 mm
 - drainage layer 25 mm
 - insulated timber frame 245 mm
 - timber slats 160 x 40 (c.t.c. 250 mm)



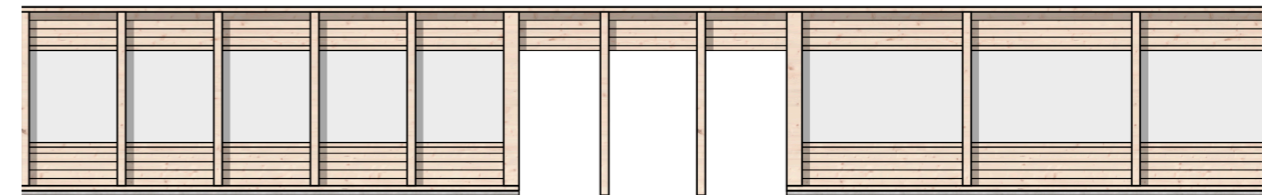
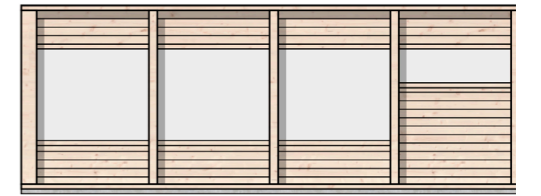
- Facade (outside- inside)
- wooden cladding 20 mm
 - battens 16 mm
 - insulated timber frame 170 mm
 - integrated storage space

- Facade (outside- inside)
- concrete cladding 70 mm
 - insulation 150 mm
 - floor insulation 300 mm

FACADE FRAGMENT



EAST FACADE



WEST FACADE



NORTH FACADE

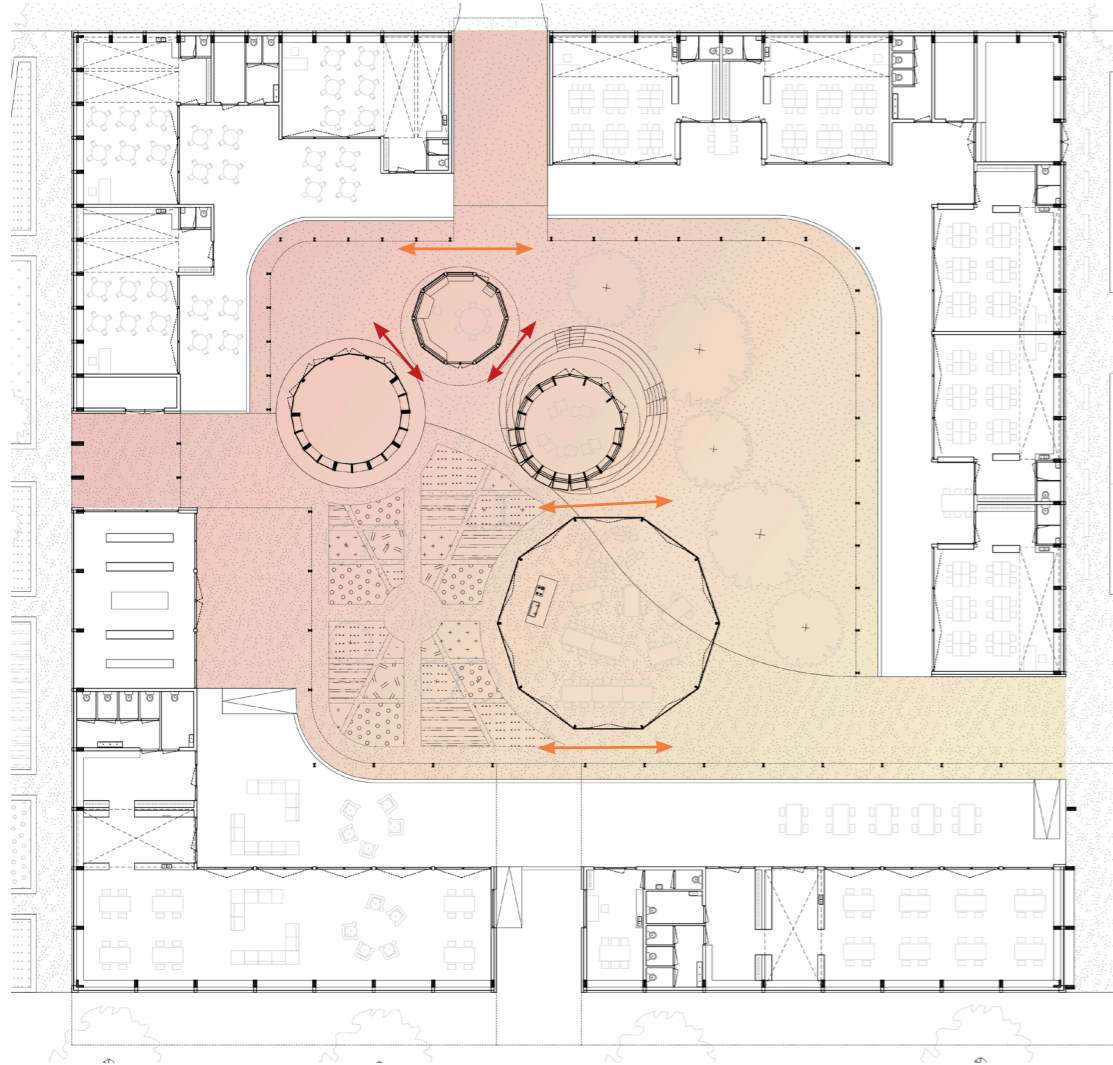


SOUTH FACADE

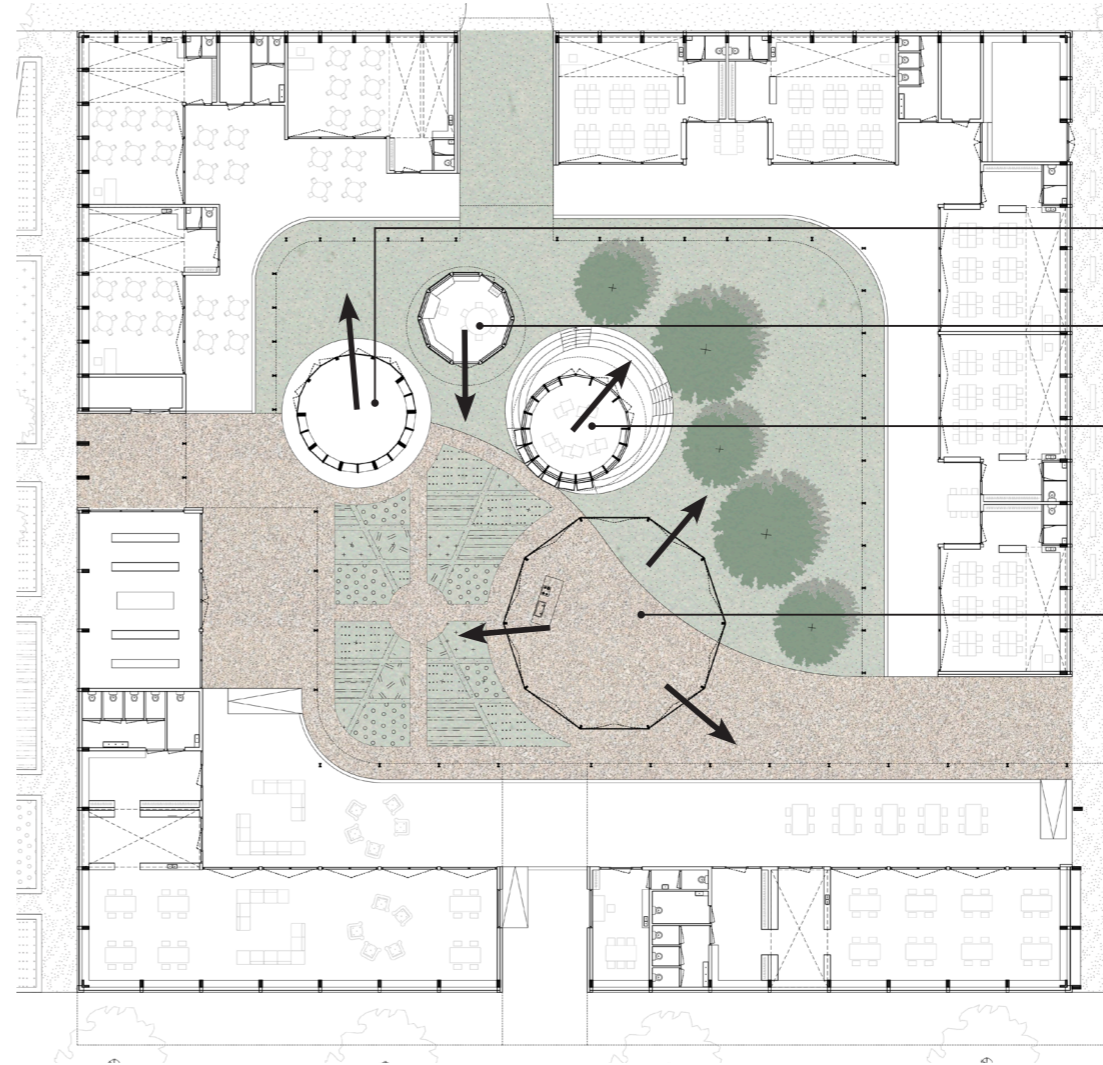


School for the aged and youthful

Studio: School for a Timber Age



INTIMATE TO OPEN



GRASS - GRAVEL

Play space

Management office

Children library

Auditorium



GARDEN

ROBIN-JAY KING



SECTION

PRIMARY SCHOOL & ELDERLY INSTITUTION



1. Play space
 - opens towards play part courtyard
 - play
 - half climate

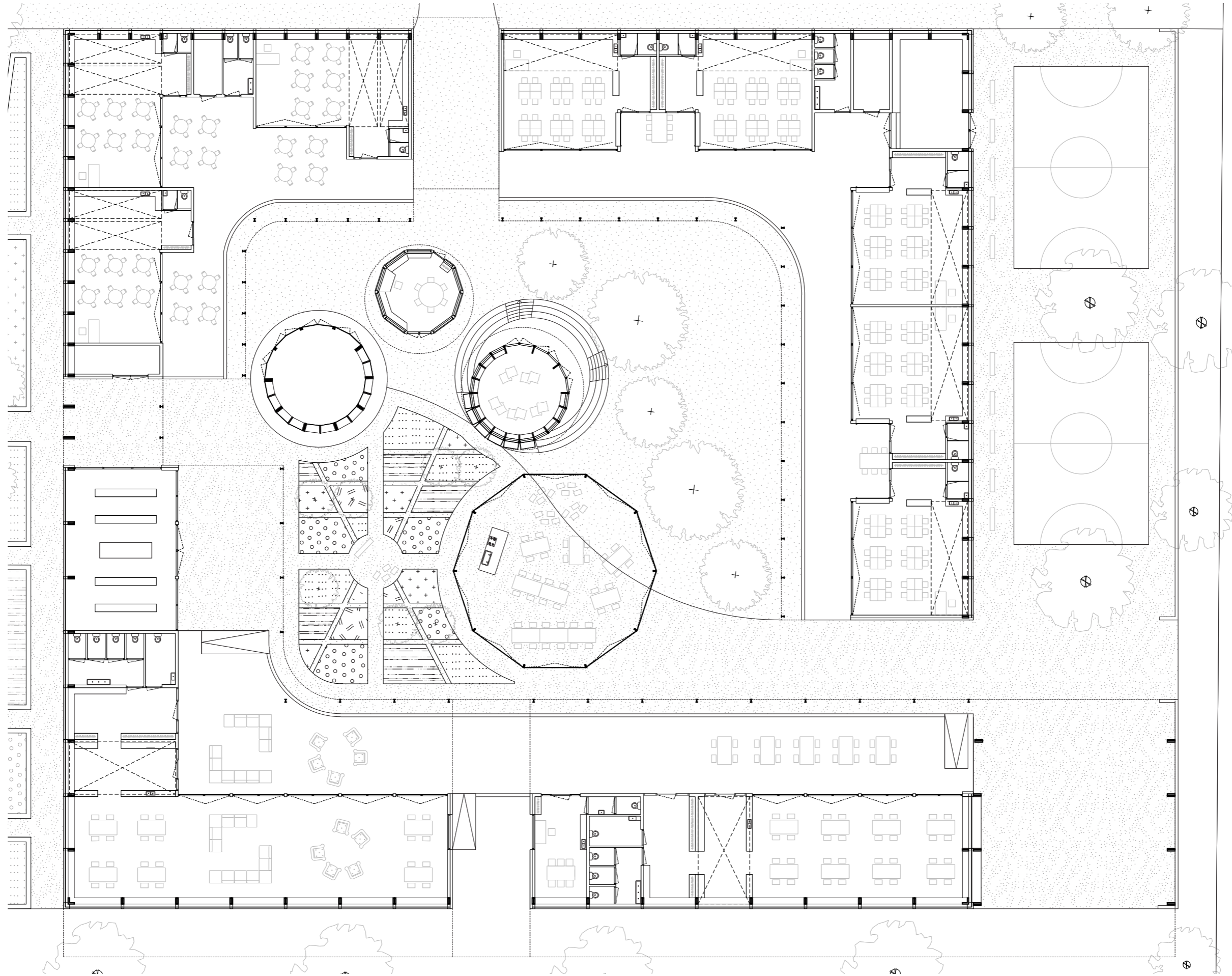
2. Library
 - opens towards reading steps
 - focus
 - insulated

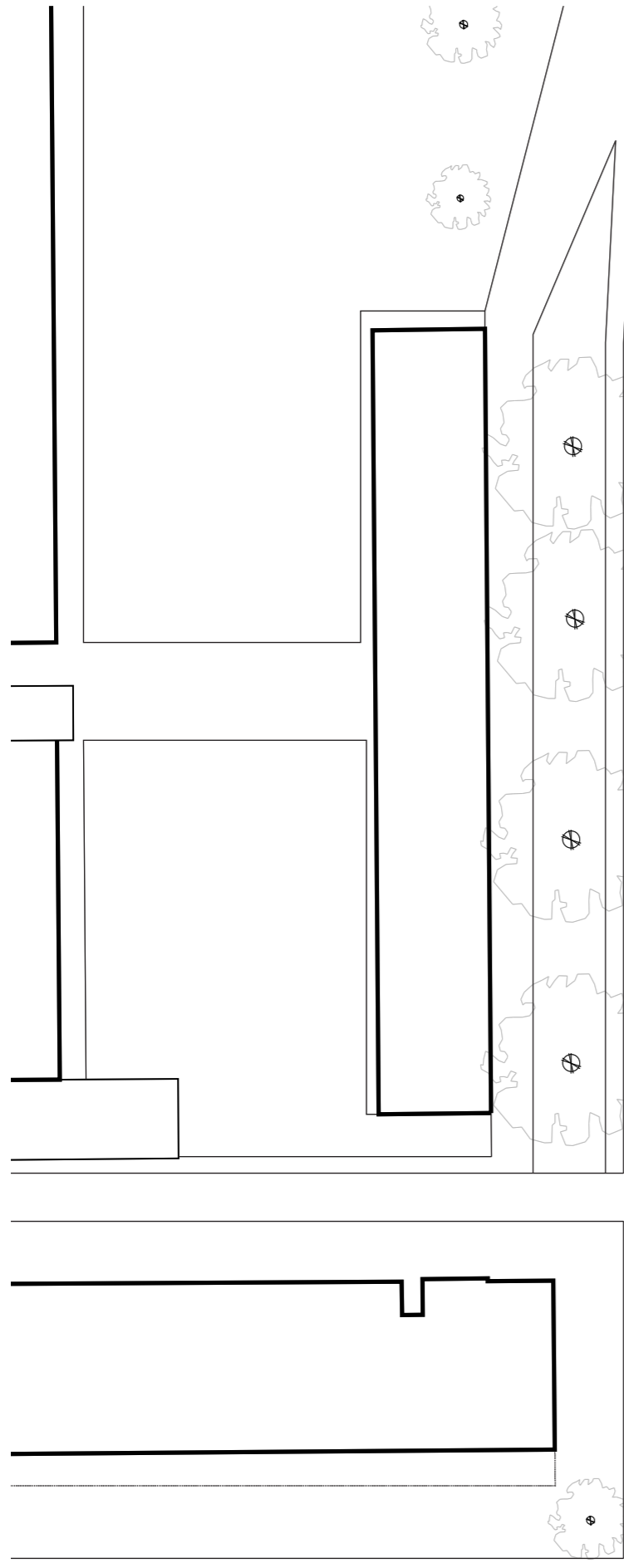
3. Auditorium
 - opens towards all sides
 - multipurpose
 - half climate



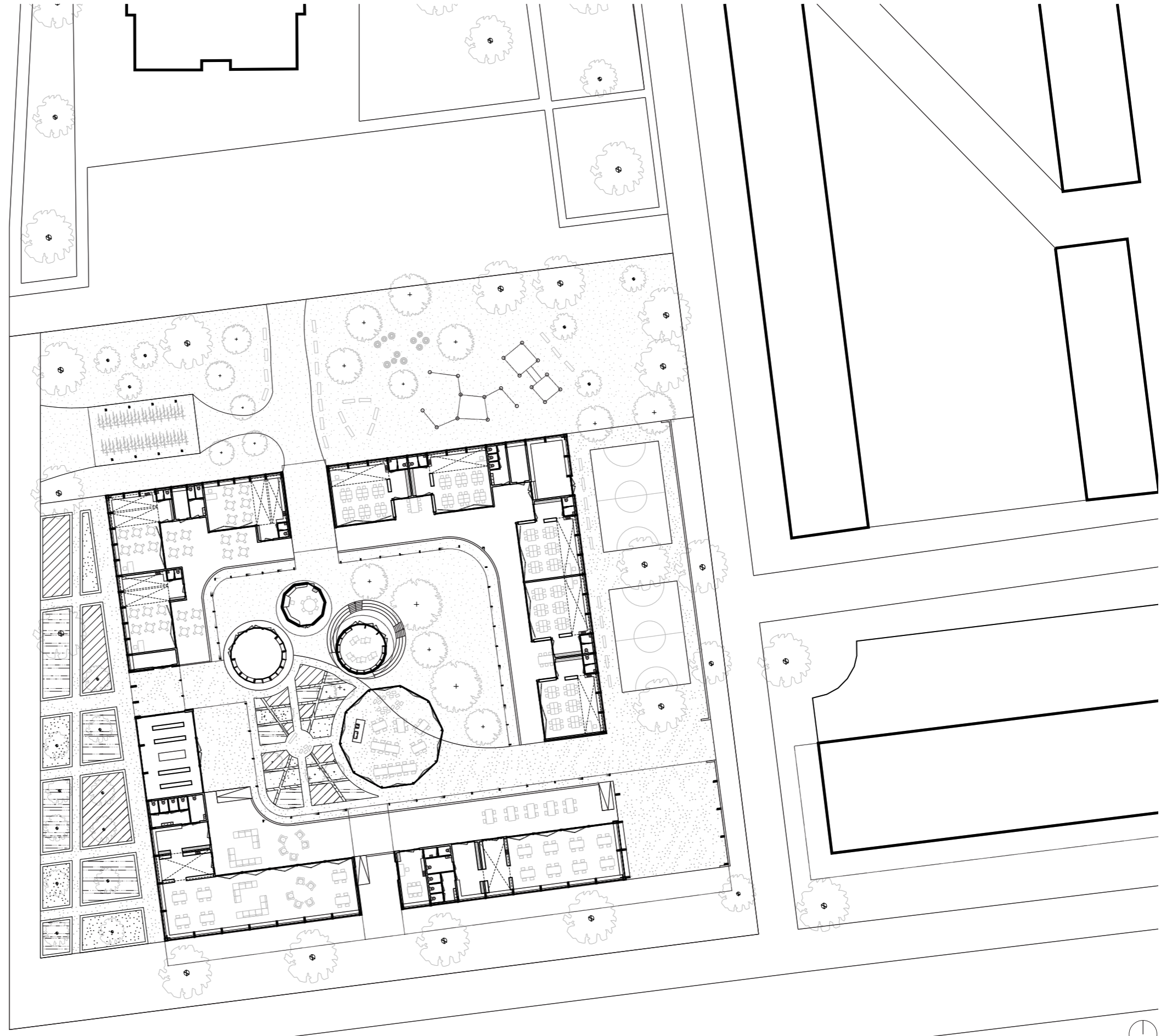
1. Garden tool storages
2. Fertilizer bin storage
3. Preparing/eating







SITE PLAN



SITE PLAN