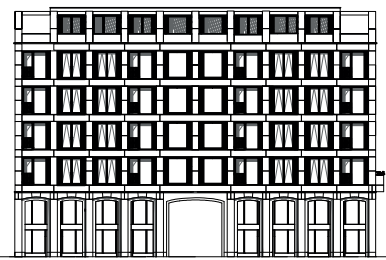
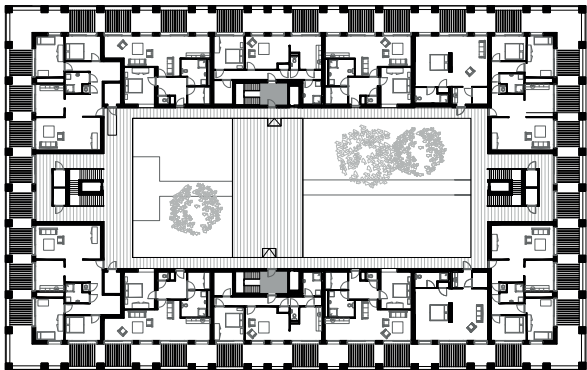




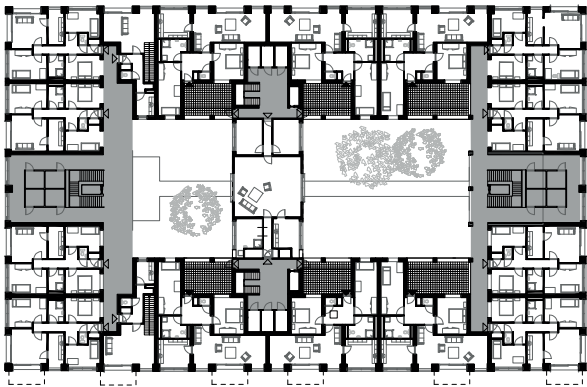
frontview



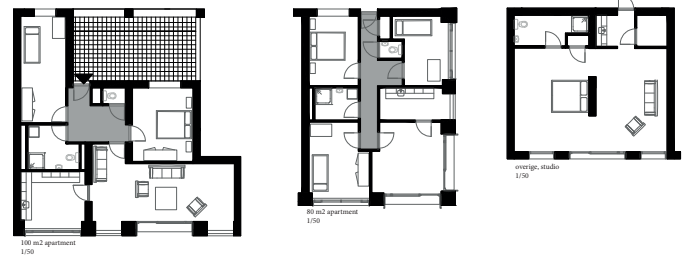
left sideview



top floor



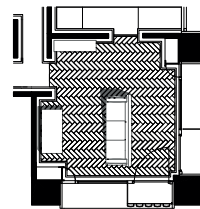
first to 10th floor



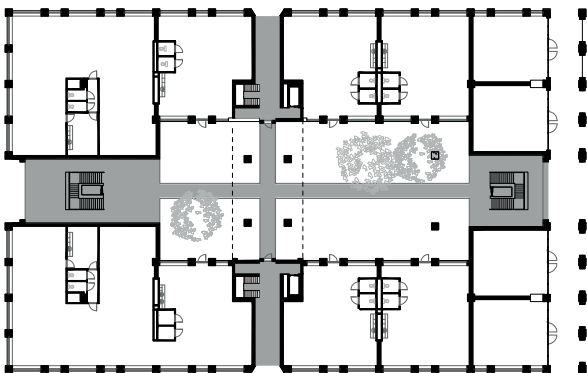
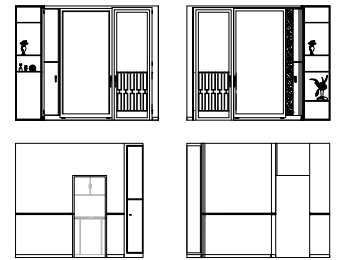
100 m2 apartment
1:150

80 m2 apartment
1:150

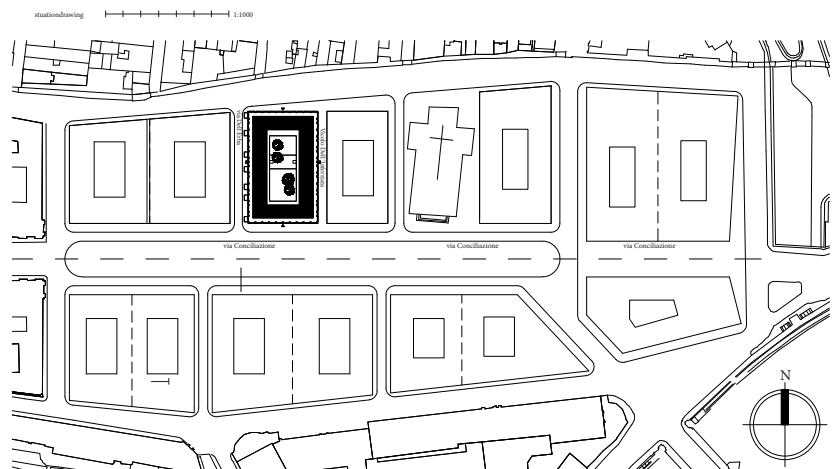
60 m2 studio
1:150



Livingroom
80 m2 apartment
1:150



Ground floor
1:200



siteplan
1:1000

the architecture of my building has an equally high-quality appearance on all sides.

I used the same type of colors as the current palazzo.
Characteristic is the grid in the facade in which the gold-colored frames are situated.
The square or (grid) in the facade is interrupted by a horizontal line. What shows a new function within the building.
These lines come back in the living spaces but then made in bronze.

An easy-to-read architecture and easily accessible. A good place where you can hide from the busy center of Rome.