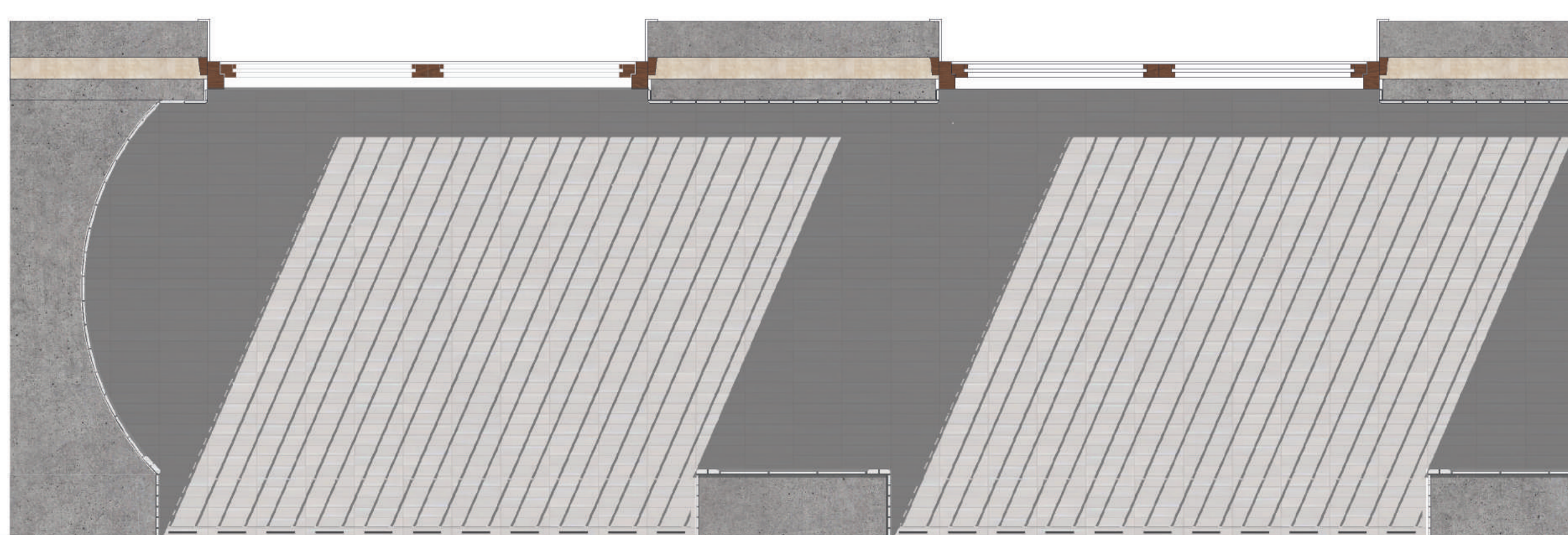
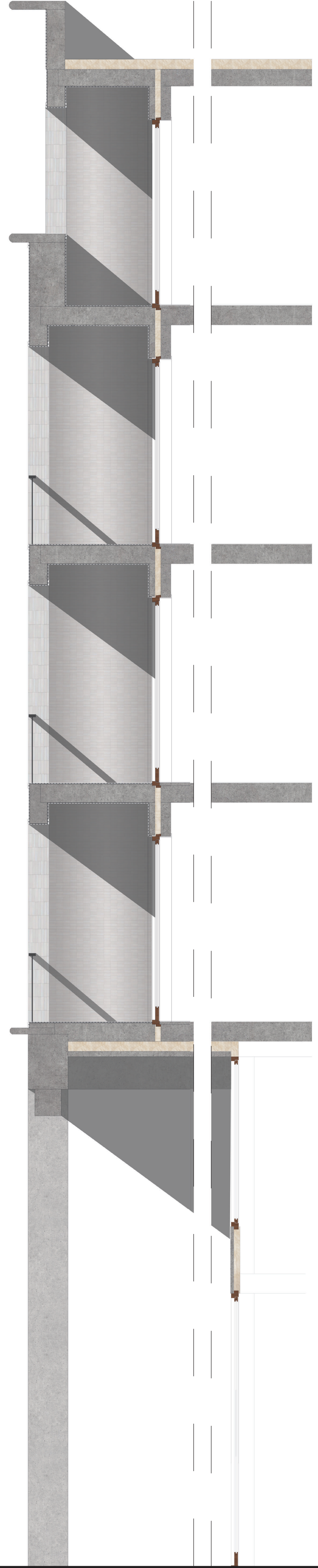
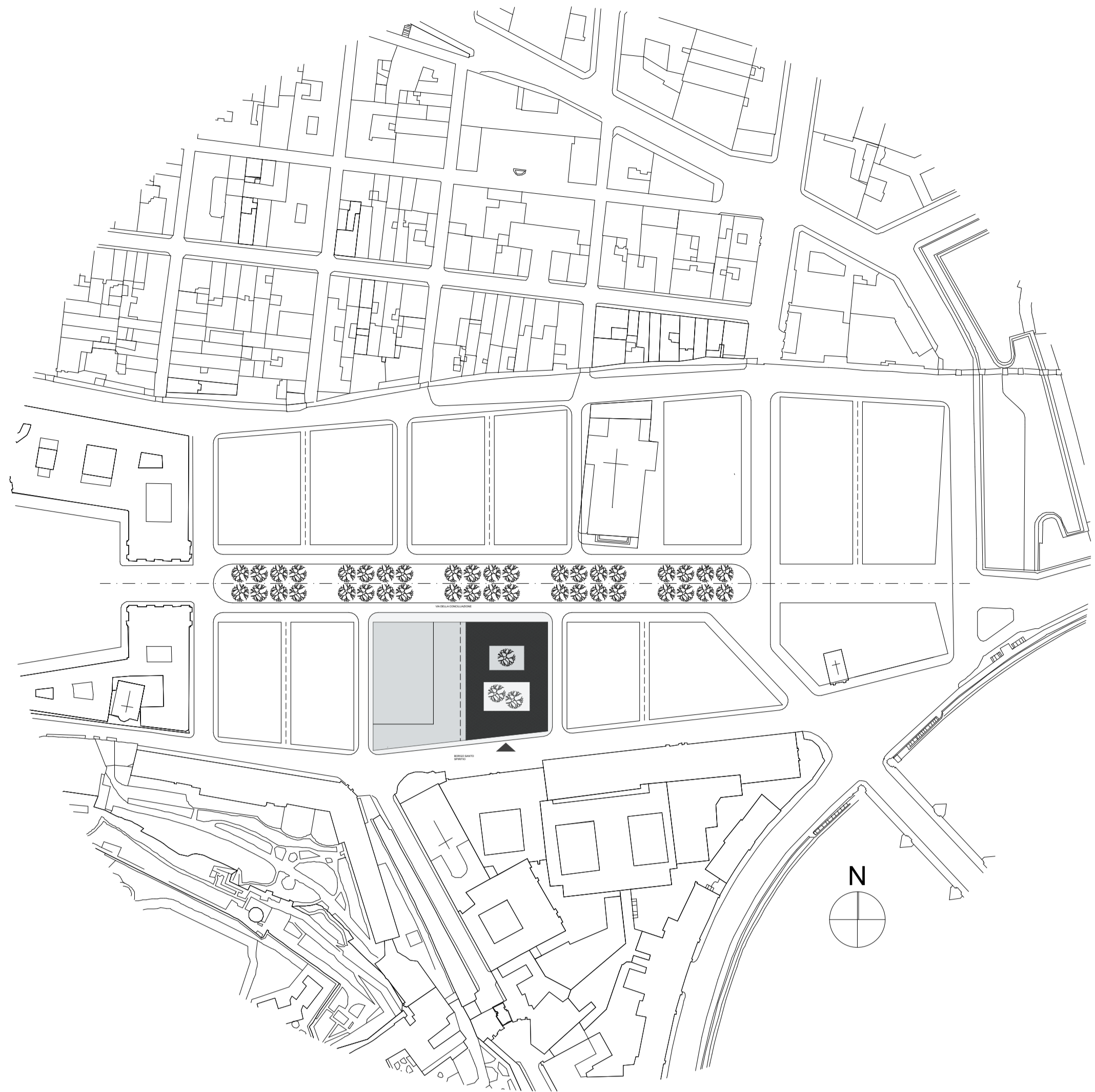


PALAZZO XI



# PALAZZO XI

THE STRATIFICATION MAKES THE CONTEMPORARY CITY BLOCK IN THE HISTORIC CITY OF ROME. IT CREATES A SMOOTH TRANSITION FROM THE VIBRANT URBAN SPACE TO A ELEGANT WORK-LIVING INTERIOR. A GRADIENT FROM PUBLIC TO PRIVATE, GIVING SOMETHING BACK TO HER CITY.



PLAN  
1:2000



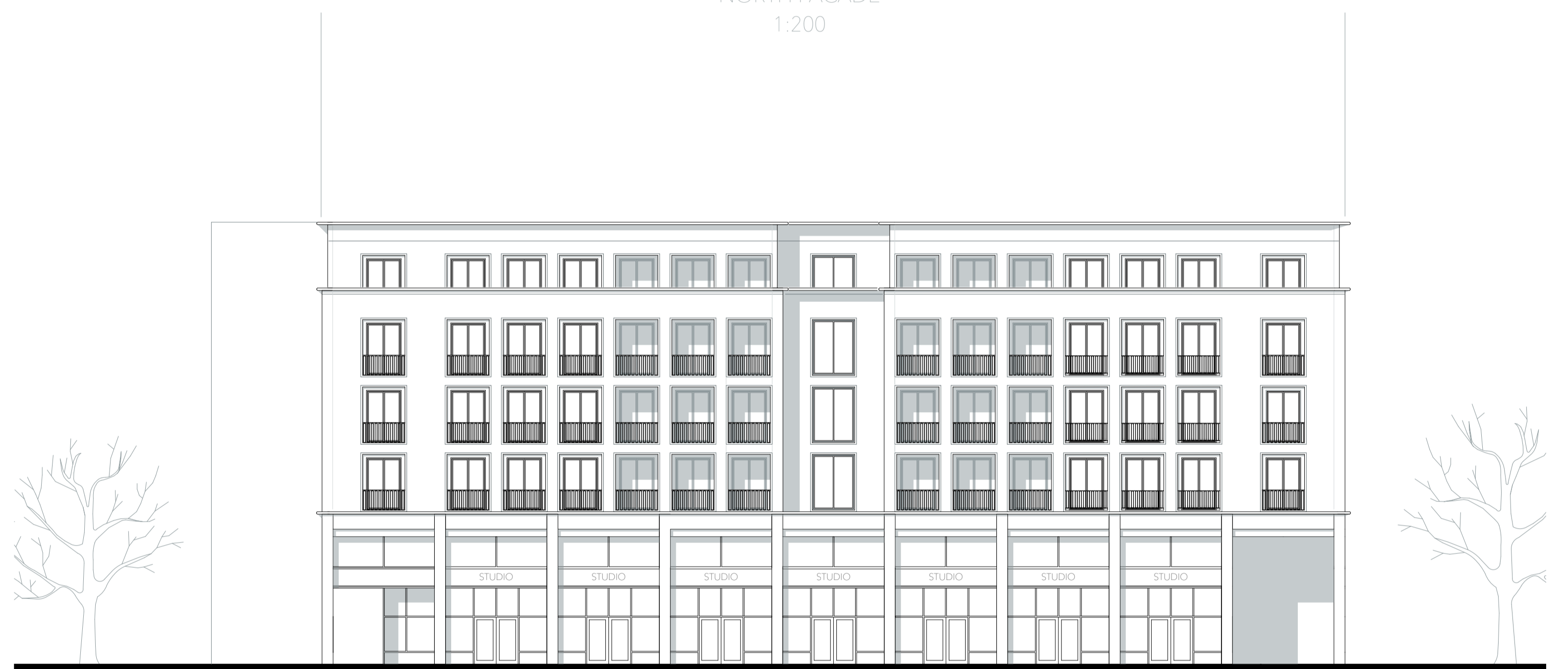
SOUTH FACADE  
1:200



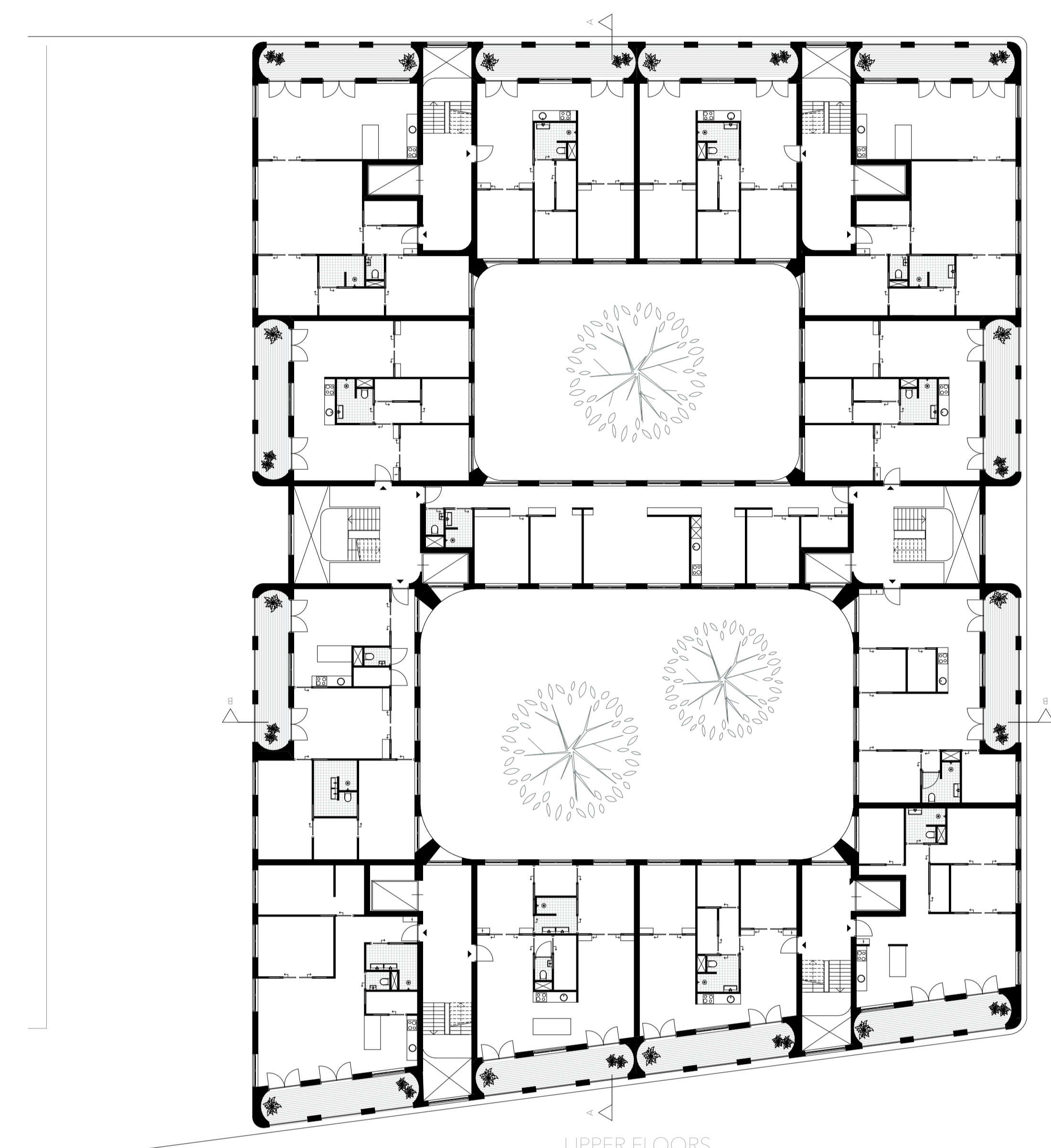
WEST FACADE  
1:200



NORTH FACADE  
1:200



EAST FACADE  
1:200



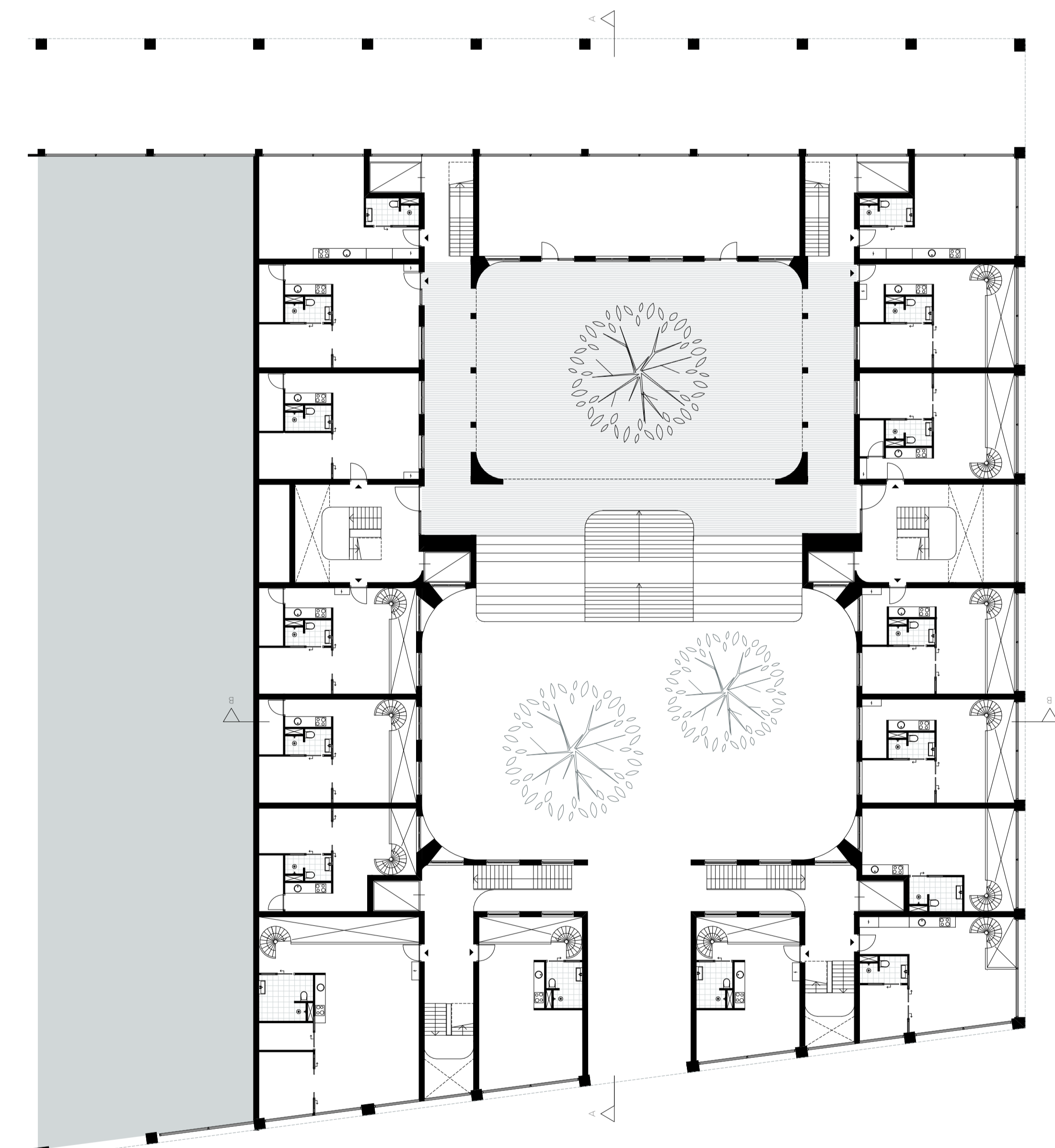
UPPER FLOORS  
1:200



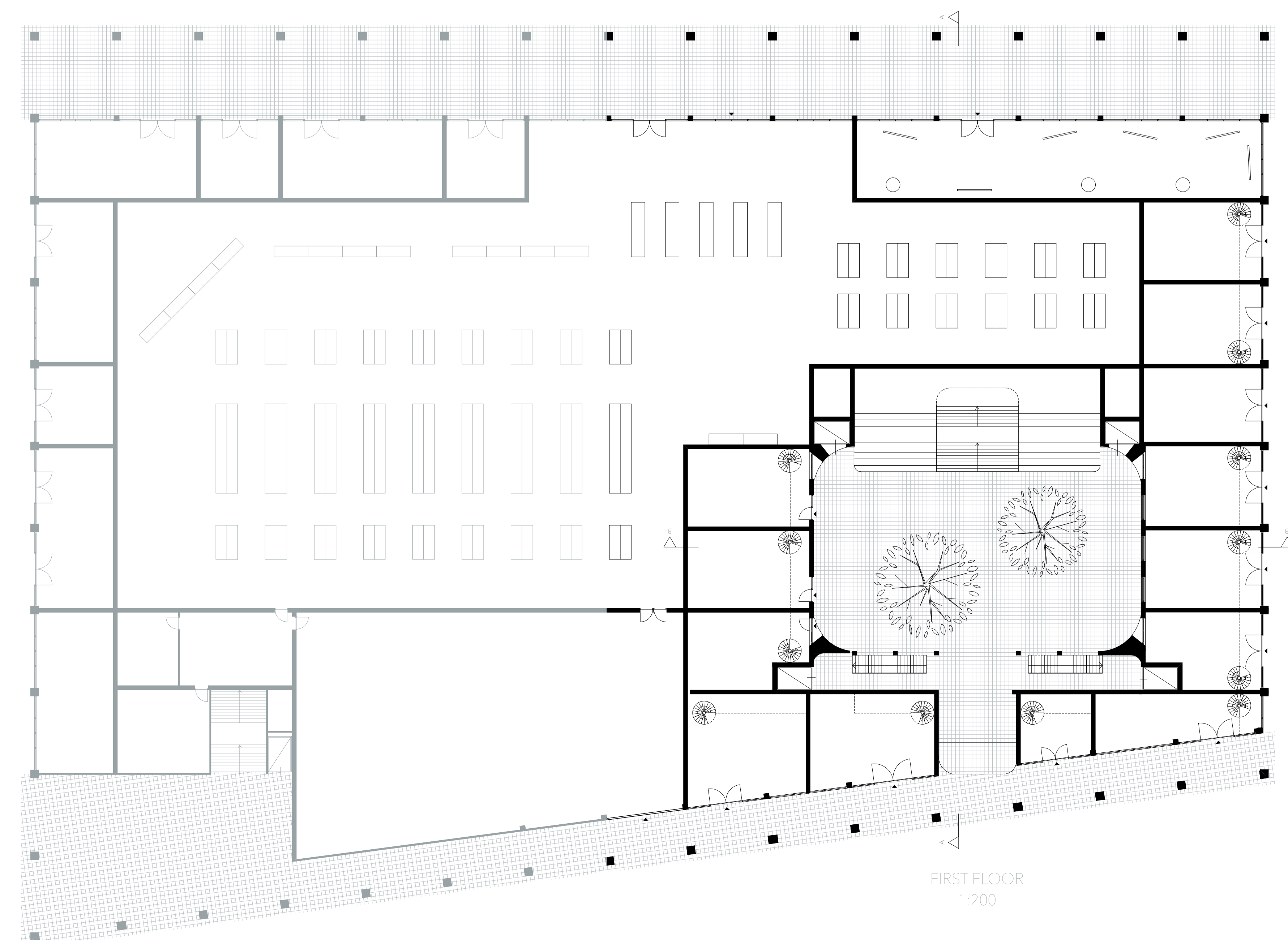
SECTION A-A  
1:200



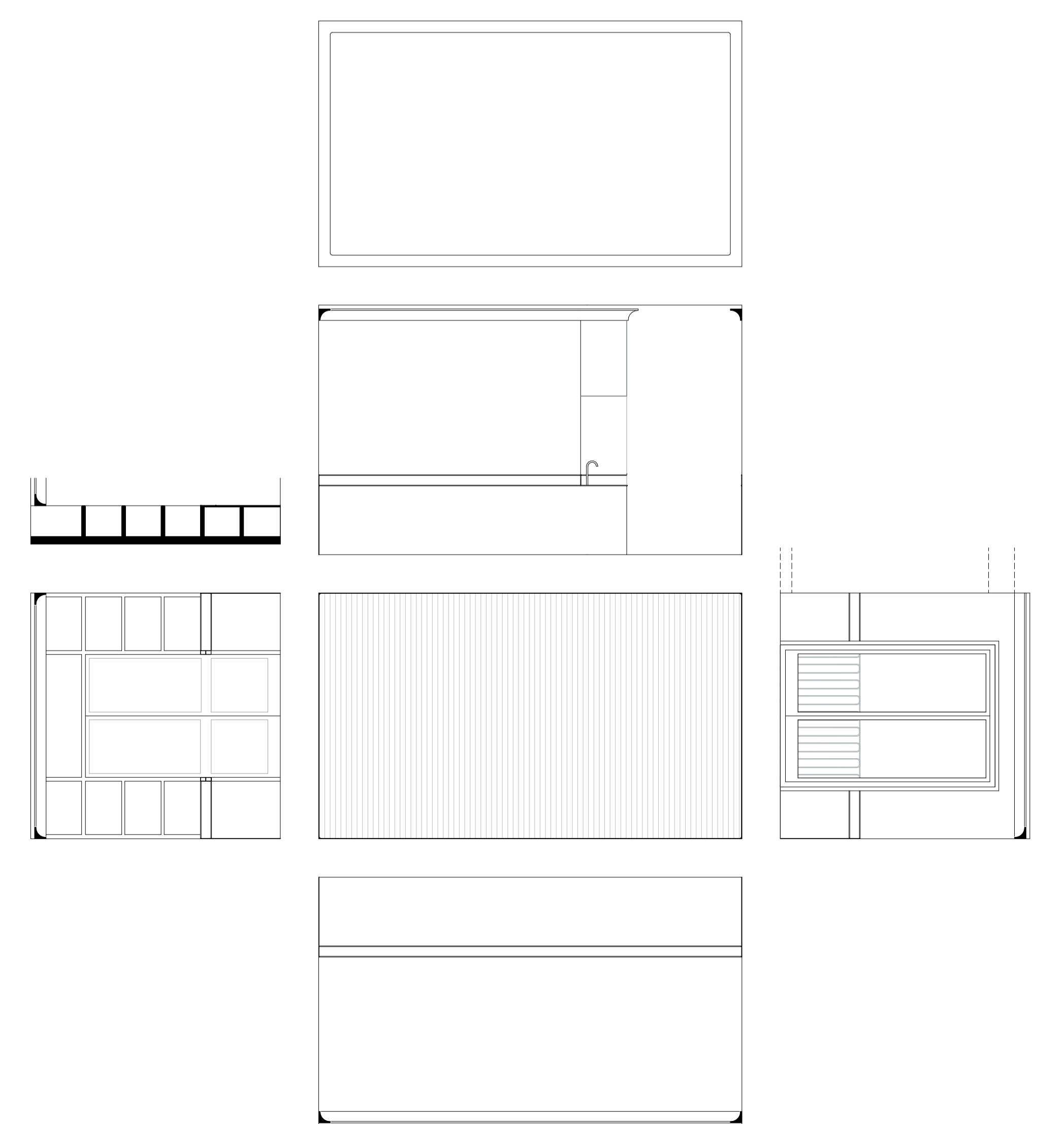
SECTION B-B  
1:200



SECOND FLOOR  
1:200



FIRST FLOOR  
1:200



TYPICAL ROOM  
1:50

# MATTEI DI PAGANICA

1640

Via Michelangelo Caetani 32, Roma

Giovanni Mangone, 1541-1543

